

Data Path : Z:\voasrv\HPCHEM1\MSVOA_W\Data\VW042721\
 Data File : VW018799.D
 Acq On : 27 Apr 2021 13:23
 Operator : SY/VA
 Sample : VIBLK125
 Misc : 5.00G/10ML/MSVOA_W/SOIL
 ALS Vial : 5 Sample Multiplier: 1

Instrument :
 MSVOA_W
 ClientSampleId :
 VIBLK125

Integration Parameters: LSCINT.P

Integrator: RTE
 Smoothing : OFF
 Sampling : 1
 Start Thrs : 0.2
 Stop Thrs : 0

Filtering: 5
 Min Area: 0 % of largest Peak
 Max Peaks: 100
 Peak Location: TOP

If leading or trailing edge < 100 prefer < Baseline drop else tangent >
 Peak separation: 5

Method : Z:\voasrv\HPCHEM1\MSVOA_W\Method\SFAMWLM041421SMA.M
 Title : SFAM01.0

Signal : TIC: VW018799.D\data.ms

peak #	R.T. min	first scan	max scan	last scan	PK TY	peak height	corr. area	corr. % max.	% of total
1	2.154	36	41	52	rBV	27525	76457	3.98%	0.540%
2	2.355	68	74	84	rVB	95471	190625	9.91%	1.346%
3	2.891	154	162	177	rBV2	74953	189791	9.87%	1.340%
4	3.257	220	222	227	rVB4	1041	1099	0.06%	0.008%
5	3.385	237	243	251	rBV7	1306	3459	0.18%	0.024%
6	4.019	335	347	363	rBV	160932	505566	26.29%	3.570%
7	4.409	396	411	433	rBV2	14141	56639	2.95%	0.400%
8	4.672	453	454	460	rVB3	558	787	0.04%	0.006%
9	4.909	482	493	510	rBV2	16258	60666	3.15%	0.428%
10	5.117	519	527	528	rBV4	1409	2927	0.15%	0.021%
11	5.421	570	577	578	rBV4	1907	3424	0.18%	0.024%
12	5.635	606	612	615	rBV	291	726	0.04%	0.005%
13	5.763	624	633	639	rBV7	1027	2948	0.15%	0.021%
14	5.946	652	663	672	rVB4	4378	13869	0.72%	0.098%
15	6.202	700	705	707	rBV2	750	1168	0.06%	0.008%
16	6.915	816	822	830	rBV5	1057	2517	0.13%	0.018%
17	7.074	839	848	854	rBV	49171	140874	7.33%	0.995%
18	7.531	916	923	925	rVV4	850	1404	0.07%	0.010%
19	7.647	931	942	957	rBV	293616	721760	37.53%	5.096%
20	7.756	957	960	964	rBV5	728	967	0.05%	0.007%
21	7.854	974	976	978	rBV2	791	766	0.04%	0.005%
22	7.872	978	979	984	rVB3	1193	1528	0.08%	0.011%
23	7.951	984	992	999	rBV6	3465	8638	0.45%	0.061%
24	8.055	1006	1009	1010	rBV2	940	941	0.05%	0.007%
25	8.147	1022	1024	1030	rVB3	1007	1409	0.07%	0.010%
26	8.275	1030	1045	1062	rBV3	607078	1923051	100.00%	13.579%
27	8.622	1100	1102	1106	rBV3	566	766	0.04%	0.005%
28	8.689	1108	1113	1118	rBV2	1539	2180	0.11%	0.015%
29	8.842	1128	1138	1150	rBV	639890	1283206	66.73%	9.061%
30	9.085	1172	1178	1187	rVB6	3490	8344	0.43%	0.059%
31	9.274	1198	1209	1217	rBV	389141	795781	41.38%	5.619%
32	9.469	1238	1241	1244	rVB3	769	1217	0.06%	0.009%
33	9.652	1265	1271	1278	rVB7	1524	4126	0.21%	0.029%
34	9.762	1281	1289	1296	rVB2	8723	17512	0.91%	0.124%
35	9.890	1302	1310	1318	rBV2	22199	45932	2.39%	0.324%
36	10.036	1322	1334	1351	rVB	214303	396664	20.63%	2.801%

Data Path : Z:\voasrv\HPCHEM1\MSVOA_W\Data\VW042721\
 Data File : VW018799.D
 Acq On : 27 Apr 2021 13:23
 Operator : SY/VA
 Sample : VIBLK125
 Misc : 5.00G/10ML/MSVOA_W/SOIL
 ALS Vial : 5 Sample Multiplier: 1

Instrument :
 MSVOA_W
 ClientSampleId :
 VIBLK125

Integration Parameters: LSCINT.P

Integrator: RTE
 Smoothing : OFF
 Sampling : 1
 Start Thrs : 0.2
 Stop Thrs : 0

Filtering: 5
 Min Area: 0 % of largest Peak
 Max Peaks: 100
 Peak Location: TOP

If leading or trailing edge < 100 prefer < Baseline drop else tangent >
 Peak separation: 5

Method : Z:\voasrv\HPCHEM1\MSVOA_W\Method\SFAMWLM041421SMA.M
 Title : SFAM01.0

37	10.213	1357	1363	1365	rBV2	5896	10358	0.54%	0.073%
38	10.250	1365	1369	1374	rVB2	9074	15519	0.81%	0.110%
39	10.323	1374	1381	1388	rBV	777149	1386827	72.12%	9.792%
40	10.384	1388	1391	1401	rVB	16573	31247	1.62%	0.221%
41	10.506	1406	1411	1415	rBV4	578	1031	0.05%	0.007%
42	10.579	1415	1423	1435	rBV	135524	237284	12.34%	1.675%
43	10.701	1436	1443	1450	rBV	104106	183177	9.53%	1.293%
44	10.780	1451	1456	1462	rVB6	3313	6659	0.35%	0.047%
45	10.853	1462	1468	1474	rBV7	8814	19223	1.00%	0.136%
46	10.920	1474	1479	1487	rBV	187080	319535	16.62%	2.256%
47	11.067	1497	1503	1510	rBV2	16654	29051	1.51%	0.205%
48	11.176	1516	1521	1526	rVB2	9139	13293	0.69%	0.094%
49	11.280	1535	1538	1541	rVB2	561	723	0.04%	0.005%
50	11.341	1541	1548	1553	rBV5	1492	2923	0.15%	0.021%
51	11.439	1553	1564	1572	rVB	66031	115377	6.00%	0.815%
52	11.628	1585	1595	1605	rBV	898452	1541503	80.16%	10.885%
53	11.731	1608	1612	1620	rVB2	7035	12035	0.63%	0.085%
54	11.841	1624	1630	1640	rBV4	6559	16212	0.84%	0.114%
55	12.176	1677	1685	1692	rBV4	6383	14952	0.78%	0.106%
56	12.335	1709	1711	1716	rBV4	630	1121	0.06%	0.008%
57	12.469	1726	1733	1739	rBV2	8224	13486	0.70%	0.095%
58	12.609	1747	1756	1763	rBV2	84456	145815	7.58%	1.030%
59	12.695	1763	1770	1776	rBV	313167	532782	27.71%	3.762%
60	12.749	1776	1779	1785	rVB4	6676	11056	0.57%	0.078%
61	12.865	1794	1798	1800	rBV3	948	1128	0.06%	0.008%
62	12.938	1803	1810	1812	rBV4	13290	24254	1.26%	0.171%
63	12.969	1812	1815	1820	rVB	16095	24783	1.29%	0.175%
64	13.036	1822	1826	1829	rVB5	3840	5232	0.27%	0.037%
65	13.079	1829	1833	1837	rVB5	3759	5404	0.28%	0.038%
66	13.188	1844	1851	1856	rBV	6202	11104	0.58%	0.078%
67	13.249	1857	1861	1864	rBV	4300	5967	0.31%	0.042%
68	13.292	1864	1868	1874	rVB3	21362	34241	1.78%	0.242%
69	13.408	1877	1887	1892	rBV4	8419	18500	0.96%	0.131%
70	13.469	1892	1897	1898	rBV4	4725	5955	0.31%	0.042%
71	13.499	1898	1902	1905	rBV4	9419	12202	0.63%	0.086%
72	13.554	1905	1911	1919	rBV	924057	1481194	77.02%	10.459%
73	13.761	1939	1945	1948	rBV4	10054	16848	0.88%	0.119%
74	13.792	1948	1950	1953	rVB3	3319	3262	0.17%	0.023%
75	13.853	1953	1960	1966	rBV	736537	1192399	62.01%	8.420%
76	14.011	1981	1986	1989	rBV6	2531	4085	0.21%	0.029%

Data Path : Z:\voasrv\HPCHEM1\MSVOA_W\Data\VW042721\
 Data File : VW018799.D
 Acq On : 27 Apr 2021 13:23
 Operator : SY/VA
 Sample : VIBLK125
 Misc : 5.00G/10ML/MSVOA_W/SOIL
 ALS Vial : 5 Sample Multiplier: 1

Instrument :
 MSVOA_W
 ClientSampleId :
 VIBLK125

Integration Parameters: LSCINT.P

Integrator: RTE
 Smoothing : OFF Filtering: 5
 Sampling : 1 Min Area: 0 % of largest Peak
 Start Thrs: 0.2 Max Peaks: 100
 Stop Thrs : 0 Peak Location: TOP

If leading or trailing edge < 100 prefer < Baseline drop else tangent >
 Peak separation: 5

Method : Z:\voasrv\HPCHEM1\MSVOA_W\Method\SFAMWLM041421SMA.M
 Title : SFAM01.0

77	14.066	1990	1995	2009	rVB2	36892	66622	3.46%	0.470%
78	14.188	2012	2015	2022	rBV4	2044	3402	0.18%	0.024%
79	14.255	2022	2026	2028	rBV4	729	1094	0.06%	0.008%
80	14.310	2033	2035	2036	rBV	1104	738	0.04%	0.005%
81	14.359	2041	2043	2048	rVB3	1965	2311	0.12%	0.016%
82	14.432	2052	2055	2058	rVB4	723	990	0.05%	0.007%
83	14.493	2058	2065	2067	rBV6	1725	3388	0.18%	0.024%
84	14.627	2082	2087	2092	rVB2	9892	16533	0.86%	0.117%
85	14.719	2097	2102	2109	rBV4	3524	5504	0.29%	0.039%
86	14.792	2112	2114	2119	rVB3	1224	1483	0.08%	0.010%
87	15.036	2150	2154	2157	rVB5	937	1310	0.07%	0.009%
88	15.127	2160	2169	2178	rBV5	4274	11048	0.57%	0.078%
89	15.365	2203	2208	2210	rVV4	2623	4530	0.24%	0.032%
90	15.432	2212	2219	2224	rVV	19304	33962	1.77%	0.240%
91	15.487	2224	2228	2233	rVV	3753	7247	0.38%	0.051%
92	15.554	2235	2239	2245	rVV5	3867	7134	0.37%	0.050%
93	15.688	2257	2261	2266	rVB5	2202	3780	0.20%	0.027%
94	15.761	2266	2273	2276	rBV4	2555	4863	0.25%	0.034%
95	15.792	2276	2278	2283	rVV4	2592	2934	0.15%	0.021%
96	15.840	2284	2286	2289	rVB4	1853	2052	0.11%	0.014%
97	15.950	2299	2304	2306	rBV6	1223	1606	0.08%	0.011%
98	16.041	2318	2319	2323	rVB4	776	688	0.04%	0.005%
99	16.102	2326	2329	2333	rVB4	603	827	0.04%	0.006%
100	16.676	2421	2423	2429	rVB4	804	694	0.04%	0.005%

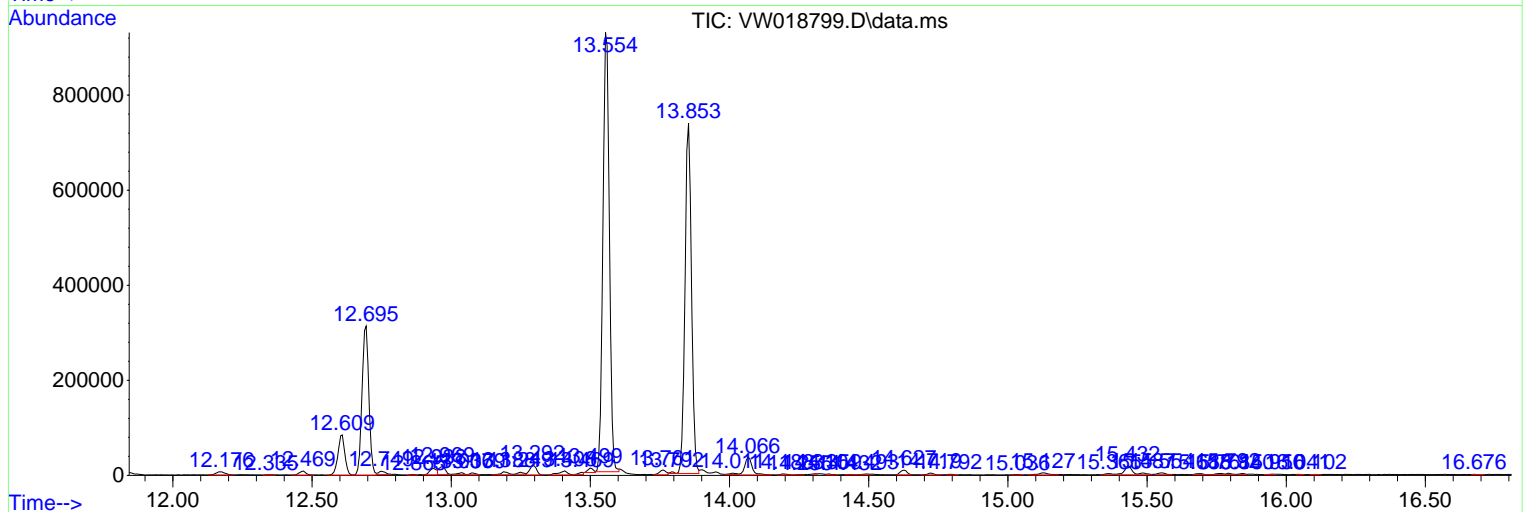
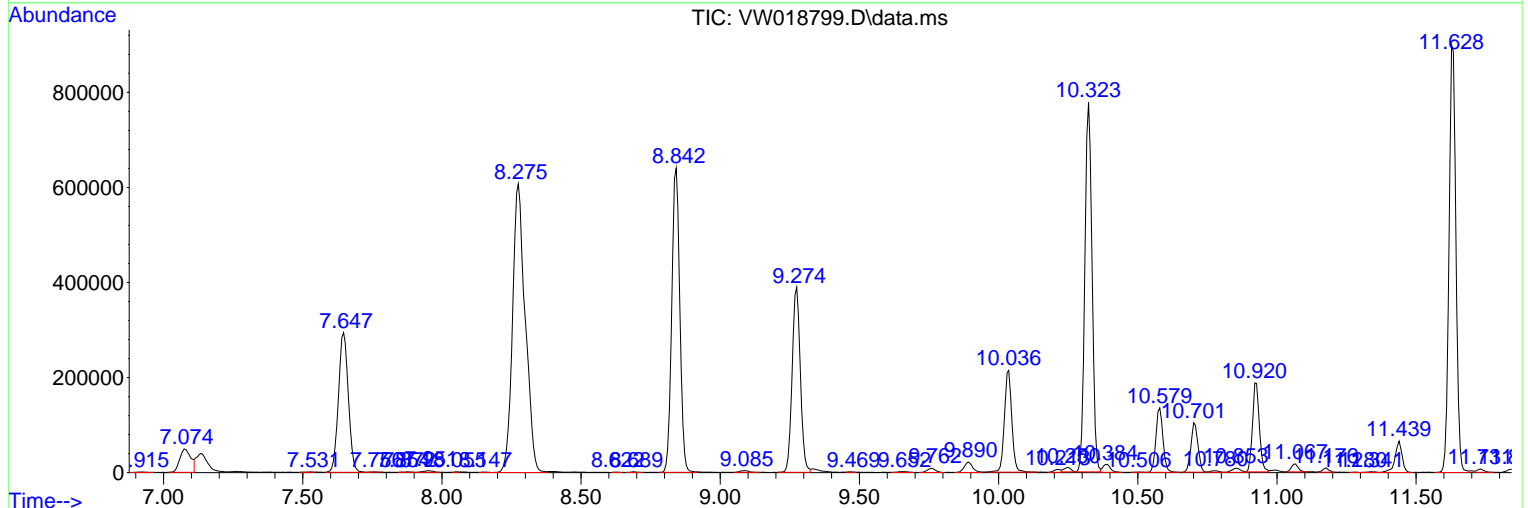
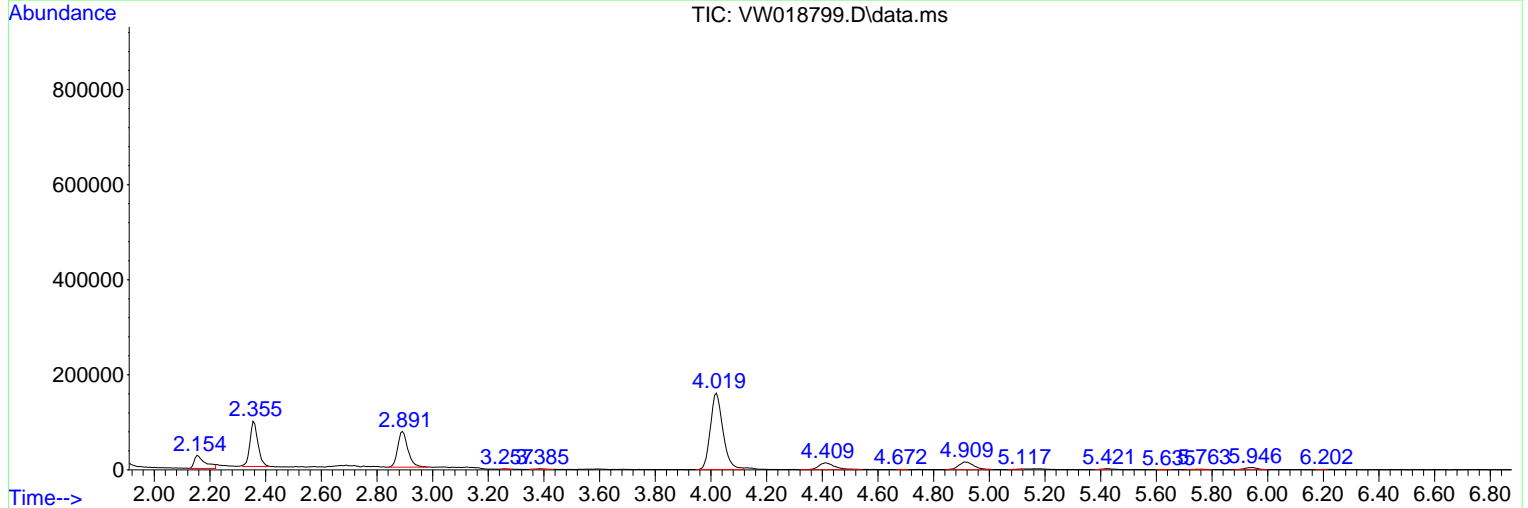
Sum of corrected areas: 14162221

Data Path : Z:\voasrv\HPCHEM1\MSVOA_W\Data\VW042721\
 Data File : VW018799.D
 Acq On : 27 Apr 2021 13:23
 Operator : SY/VA
 Sample : VIBLK125
 Misc : 5.00G/10ML/MSVOA_W/SOIL
 ALS Vial : 5 Sample Multiplier: 1

Instrument :
 MSVOA_W
ClientSampleId :
 VIBLK125

Quant Method : Z:\voasrv\HPCHEM1\MSVOA_W\Method\SFAMWLM041421SMA.M
 Quant Title : SFAM01.0

TIC Library : C:\DATABASE\NIST11.L
 TIC Integration Parameters: LSCINT.P



Data Path : Z:\voasrv\HPCHEM1\MSVOA_W\Data\VW042721\
 Data File : VW018799.D
 Acq On : 27 Apr 2021 13:23
 Operator : SY/VA
 Sample : VIBLK125
 Misc : 5.00G/10ML/MSVOA_W/SOIL
 ALS Vial : 5 Sample Multiplier: 1

Instrument :
 MSVOA_W
 ClientSampleId :
 VIBLK125

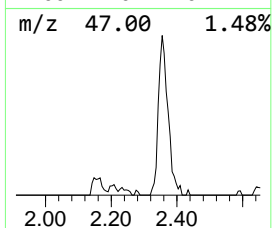
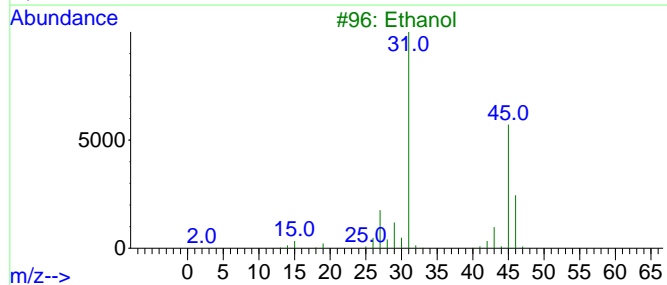
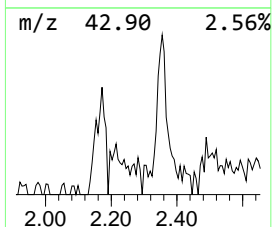
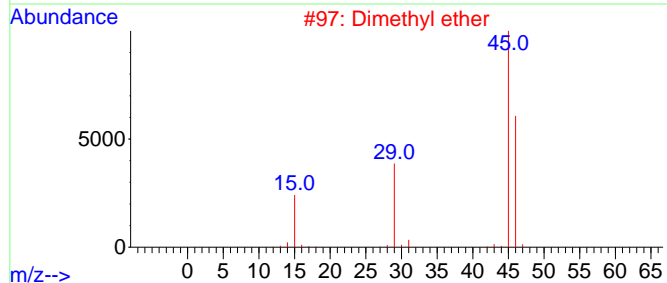
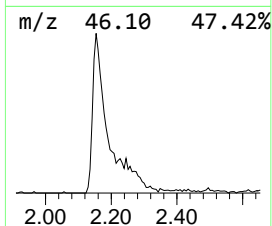
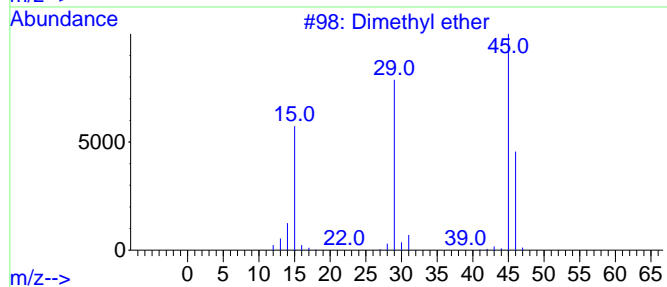
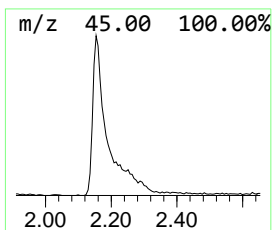
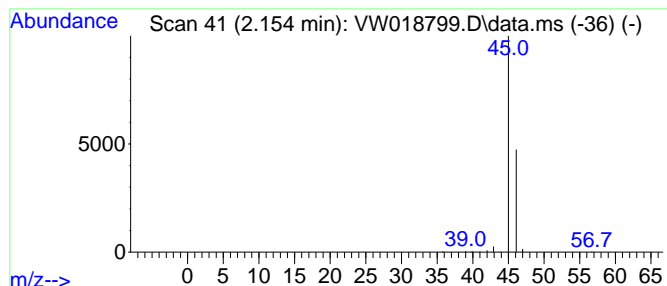
Quant Method : Z:\voasrv\HPCHEM1\MSVOA_W\Method\SFAMWLM041421SMA.M
 Quant Title : SFAM01.0

TIC Library : C:\DATABASE\NIST11.L
 TIC Integration Parameters: LSCINT.P

 Peak Number 1 Dimethyl ether Concentration Rank 5

R.T.	EstConc	Area	Relative to ISTD	R.T.
2.154	1.49 ug/L	76457	1,4-Difluorobenzene	8.842

Hit# of 5	Tentative ID	MW	MolForm	CAS#	Qual
1	Dimethyl ether	46	C2H6O	000115-10-6	74
2	Dimethyl ether	46	C2H6O	000115-10-6	9
3	Ethanol	46	C2H6O	000064-17-5	7
4	Ethanol	46	C2H6O	000064-17-5	7
5	Formic acid	46	CH2O2	000064-18-6	5



Data Path : Z:\voasrv\HPCHEM1\MSVOA_W\Data\VW042721\
Data File : VW018799.D
Acq On : 27 Apr 2021 13:23
Operator : SY/VA
Sample : VIBLK125
Misc : 5.00G/10ML/MSVOA_W/SOIL
ALS Vial : 5 Sample Multiplier: 1

Instrument :
MSVOA_W
ClientSampled :
VIBLK125

Quant Method : Z:\voasrv\HPCHEM1\MSVOA_W\Method\SFAMWLM041421SMA.M
Quant Title : SFAM01.0

TIC Library : C:\DATABASE\NIST11.L
TIC Integration Parameters: LSCINT.P

TIC Top Hit name	RT	EstConc	Units	Response	--Internal Standard--			
					#	RT	Resp	Conc
Dimethyl ether	2.154	1.5	ug/L	76457	1	8.842	1283210	25.0