

Data Path : Z:\voasrv\HPCHEM1\MSVOA_W\Data\VW042721\
 Data File : VW018808.D
 Acq On : 27 Apr 2021 17:09
 Operator : SY/VA
 Sample : M2166-06
 Misc : 6.05G/10ML/MSVOA_W/SOIL
 ALS Vial : 14 Sample Multiplier: 1

Instrument :
 MSVOA_W
 ClientSampleId :
 GB3G9

Integration Parameters: LSCINT.P

Integrator: RTE
 Smoothing : OFF Filtering: 5
 Sampling : 1 Min Area: 0 % of largest Peak
 Start Thrs: 0.2 Max Peaks: 100
 Stop Thrs : 0 Peak Location: TOP

If leading or trailing edge < 100 prefer < Baseline drop else tangent >
 Peak separation: 5

Method : Z:\voasrv\HPCHEM1\MSVOA_W\Method\SFAMWLM041421SMA.M
 Title : SFAM01.0

Signal : TIC: VW018808.D\data.ms

peak #	R.T. min	first scan	max scan	last scan	PK TY	peak height	corr. area	corr. % max.	% of total
1	1.995	11	15	30	rVB2	13484	32168	2.14%	0.239%
2	2.154	36	41	48	rBV	18553	42804	2.85%	0.318%
3	2.355	67	74	84	rVB	66384	133580	8.90%	0.991%
4	2.495	92	97	105	rBV	12941	29864	1.99%	0.222%
5	2.806	146	148	152	rBV4	1813	2416	0.16%	0.018%
6	2.891	155	162	176	rVB	63481	155393	10.36%	1.153%
7	3.087	192	194	195	rBV2	783	549	0.04%	0.004%
8	3.306	225	230	233	rBV4	664	1000	0.07%	0.007%
9	3.373	237	241	242	rBV2	598	697	0.05%	0.005%
10	3.391	242	244	246	rBV2	588	665	0.04%	0.005%
11	3.574	272	274	277	rVV3	481	560	0.04%	0.004%
12	3.684	287	292	296	rBV4	853	1644	0.11%	0.012%
13	4.019	334	347	359	rBV2	113132	357809	23.85%	2.655%
14	4.129	359	365	379	rVB	18260	53282	3.55%	0.395%
15	4.263	382	387	388	rBV2	781	1066	0.07%	0.008%
16	4.367	400	404	405	rBV2	775	936	0.06%	0.007%
17	4.915	482	494	514	rBV2	31290	110527	7.37%	0.820%
18	5.184	535	538	540	rVV	495	661	0.04%	0.005%
19	5.793	626	638	651	rBV4	3254	11204	0.75%	0.083%
20	5.940	651	662	672	rVV5	7445	22798	1.52%	0.169%
21	6.610	770	772	776	rBV2	485	678	0.05%	0.005%
22	6.909	813	821	829	rBV5	2907	9047	0.60%	0.067%
23	7.080	840	849	858	rBV	62826	180170	12.01%	1.337%
24	7.269	874	880	886	rVB2	3384	7556	0.50%	0.056%
25	7.537	921	924	927	rBV3	566	735	0.05%	0.005%
26	7.653	932	943	959	rBV	285170	698297	46.54%	5.181%
27	7.939	987	990	991	rBV2	718	750	0.05%	0.006%
28	8.067	1009	1011	1015	rBV3	371	563	0.04%	0.004%
29	8.147	1021	1024	1027	rBV3	557	887	0.06%	0.007%
30	8.275	1034	1045	1062	rBV2	450675	1454996	96.98%	10.795%
31	8.384	1062	1063	1068	rVV3	1082	1602	0.11%	0.012%
32	8.445	1071	1073	1076	rVB2	644	640	0.04%	0.005%
33	8.549	1084	1090	1097	rBV4	2995	6592	0.44%	0.049%
34	8.707	1109	1116	1123	rBV5	3285	9035	0.60%	0.067%
35	8.842	1129	1138	1152	rVV	649997	1295936	86.37%	9.615%
36	9.085	1168	1178	1184	rBV7	5576	13589	0.91%	0.101%

Data Path : Z:\voasrv\HPCHEM1\MSVOA_W\Data\VW042721\
 Data File : VW018808.D
 Acq On : 27 Apr 2021 17:09
 Operator : SY/VA
 Sample : M2166-06
 Misc : 6.05G/10ML/MSVOA_W/SOIL
 ALS Vial : 14 Sample Multiplier: 1

Instrument :
 MSVOA_W
 ClientSampleId :
 GB3G9

Integration Parameters: LSCINT.P
 Integrator: RTE
 Smoothing : OFF Filtering: 5
 Sampling : 1 Min Area: 0 % of largest Peak
 Start Thrs: 0.2 Max Peaks: 100
 Stop Thrs : 0 Peak Location: TOP

If leading or trailing edge < 100 prefer < Baseline drop else tangent >
 Peak separation: 5

Method : Z:\voasrv\HPCHEM1\MSVOA_W\Method\SFAMWLM041421SMA.M
 Title : SFAM01.0

37	9.189	1192	1195	1197	rBV2	577	526	0.04%	0.004%
38	9.274	1197	1209	1219	rBV	384880	771074	51.39%	5.721%
39	9.348	1219	1221	1227	rVV6	2406	4134	0.28%	0.031%
40	9.415	1227	1232	1245	rVB4	5465	12519	0.83%	0.093%
41	9.512	1245	1248	1249	rBV2	520	518	0.03%	0.004%
42	9.659	1268	1272	1279	rVV4	2549	4538	0.30%	0.034%
43	10.037	1326	1334	1344	rBV	193102	353110	23.53%	2.620%
44	10.128	1346	1349	1357	rVB7	1804	3491	0.23%	0.026%
45	10.195	1357	1360	1361	rBV	676	564	0.04%	0.004%
46	10.219	1361	1364	1367	rVB4	665	616	0.04%	0.005%
47	10.323	1373	1381	1388	rBV	592887	1048921	69.91%	7.783%
48	10.390	1388	1392	1399	rVB	11722	22054	1.47%	0.164%
49	10.512	1407	1412	1415	rVB2	1204	1673	0.11%	0.012%
50	10.579	1415	1423	1430	rBV	125475	220061	14.67%	1.633%
51	10.707	1437	1444	1450	rVB2	20699	38944	2.60%	0.289%
52	10.860	1460	1469	1475	rBV	530864	929810	61.97%	6.899%
53	10.927	1475	1480	1492	rVV	254798	433639	28.90%	3.217%
54	11.036	1495	1498	1499	rVV3	695	849	0.06%	0.006%
55	11.073	1499	1504	1513	rVB2	11942	21315	1.42%	0.158%
56	11.134	1513	1514	1517	rVB3	884	680	0.05%	0.005%
57	11.164	1517	1519	1520	rBV2	573	527	0.04%	0.004%
58	11.183	1520	1522	1523	rVB2	803	547	0.04%	0.004%
59	11.195	1523	1524	1527	rBV3	704	793	0.05%	0.006%
60	11.231	1527	1530	1532	rBV3	807	1227	0.08%	0.009%
61	11.329	1543	1546	1547	rBV2	563	734	0.05%	0.005%
62	11.402	1556	1558	1561	rBV4	706	1019	0.07%	0.008%
63	11.457	1565	1567	1570	rBV3	769	976	0.07%	0.007%
64	11.481	1570	1571	1574	rBV3	1090	1310	0.09%	0.010%
65	11.524	1574	1578	1579	rBV4	1416	1428	0.10%	0.011%
66	11.542	1579	1581	1582	rBV2	980	600	0.04%	0.004%
67	11.628	1588	1595	1606	rBV	873073	1500364	100.00%	11.132%
68	11.737	1611	1613	1618	rVB6	1674	2111	0.14%	0.016%
69	11.804	1622	1624	1625	rBV2	840	689	0.05%	0.005%
70	11.835	1625	1629	1639	rVB6	3803	8111	0.54%	0.060%
71	11.945	1643	1647	1653	rBV8	2479	4579	0.31%	0.034%
72	12.170	1680	1684	1691	rVB10	1962	4326	0.29%	0.032%
73	12.250	1691	1697	1700	rBV6	1437	2263	0.15%	0.017%
74	12.341	1704	1712	1721	rBV4	8928	19279	1.28%	0.143%
75	12.469	1728	1733	1739	rBV9	1269	3555	0.24%	0.026%
76	12.542	1743	1745	1747	rBV3	712	824	0.05%	0.006%

Data Path : Z:\voasrv\HPCHEM1\MSVOA_W\Data\VW042721\
 Data File : VW018808.D
 Acq On : 27 Apr 2021 17:09
 Operator : SY/VA
 Sample : M2166-06
 Misc : 6.05G/10ML/MSVOA_W/SOIL
 ALS Vial : 14 Sample Multiplier: 1

Instrument :
 MSVOA_W
 ClientSampleId :
 GB3G9

Integration Parameters: LSCINT.P

Integrator: RTE
 Smoothing : OFF Filtering: 5
 Sampling : 1 Min Area: 0 % of largest Peak
 Start Thrs: 0.2 Max Peaks: 100
 Stop Thrs : 0 Peak Location: TOP

If leading or trailing edge < 100 prefer < Baseline drop else tangent >
 Peak separation: 5

Method : Z:\voasrv\HPCHEM1\MSVOA_W\Method\SFAMWLM041421SMA.M
 Title : SFAM01.0

77	12.603	1749	1755	1763	rVV	35491	62579	4.17%	0.464%
78	12.695	1763	1770	1777	rVV	377454	627774	41.84%	4.658%
79	12.756	1777	1780	1784	rVB6	1894	3183	0.21%	0.024%
80	12.865	1795	1798	1799	rBV3	1754	1704	0.11%	0.013%
81	12.938	1806	1810	1816	rBV6	5369	9624	0.64%	0.071%
82	13.188	1848	1851	1856	rBV4	4358	7219	0.48%	0.054%
83	13.274	1857	1865	1874	rVV2	25304	60122	4.01%	0.446%
84	13.396	1880	1885	1891	rVB5	17939	32503	2.17%	0.241%
85	13.469	1891	1897	1904	rBV5	13589	28879	1.92%	0.214%
86	13.560	1904	1912	1918	rBV	848217	1383359	92.20%	10.264%
87	13.646	1924	1926	1932	rVB6	4635	6434	0.43%	0.048%
88	13.761	1941	1945	1952	rVB10	5214	10995	0.73%	0.082%
89	13.853	1953	1960	1967	rBV	653708	1056364	70.41%	7.838%
90	14.066	1991	1995	2003	rVB	15841	29391	1.96%	0.218%
91	14.322	2033	2037	2043	rBV4	14676	23948	1.60%	0.178%
92	14.383	2043	2047	2049	rBV4	3810	4994	0.33%	0.037%
93	14.633	2085	2088	2089	rBV3	2543	3029	0.20%	0.022%
94	14.786	2109	2113	2114	rBV4	3517	4991	0.33%	0.037%
95	15.066	2156	2159	2162	rBV5	3291	5884	0.39%	0.044%
96	15.182	2173	2178	2182	rBV7	6671	12068	0.80%	0.090%
97	15.322	2198	2201	2204	rBV4	4093	6983	0.47%	0.052%
98	15.493	2224	2229	2236	rVB	10353	22844	1.52%	0.169%
99	15.548	2236	2238	2239	rBV2	2045	1429	0.10%	0.011%
100	16.285	2354	2359	2363	rBV6	3192	6633	0.44%	0.049%

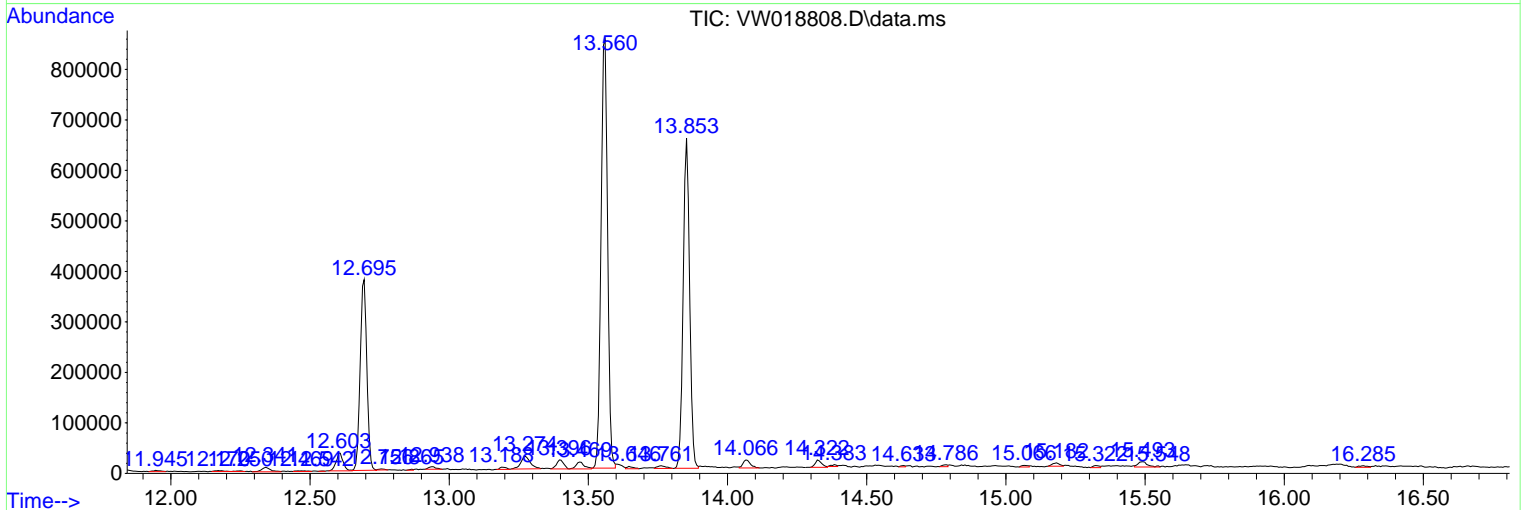
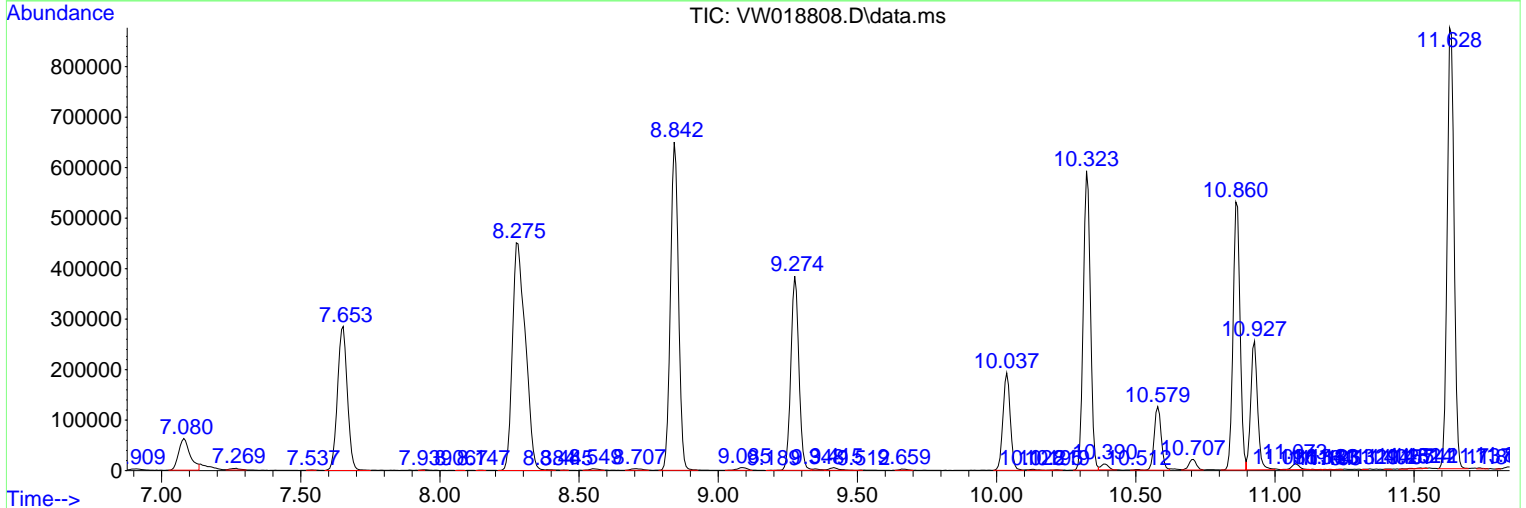
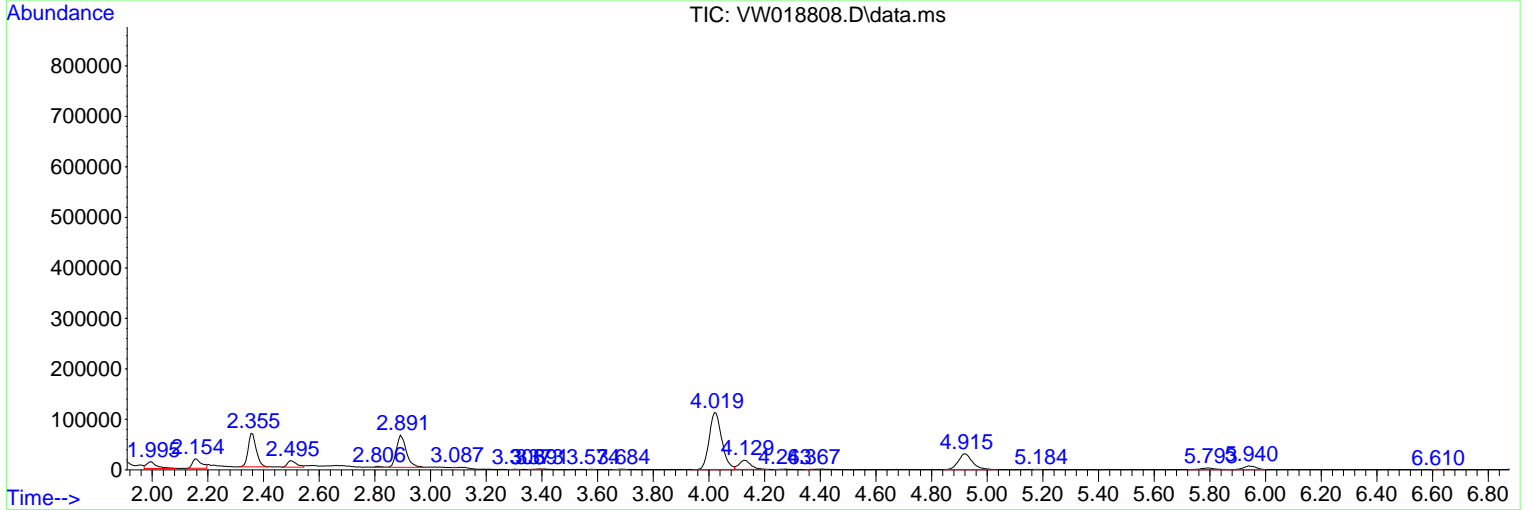
Sum of corrected areas: 13477927

Data Path : Z:\voasrv\HPCHEM1\MSVOA_W\Data\VW042721\
 Data File : VW018808.D
 Acq On : 27 Apr 2021 17:09
 Operator : SY/VA
 Sample : M2166-06
 Misc : 6.05G/10ML/MSVOA_W/SOIL
 ALS Vial : 14 Sample Multiplier: 1

Instrument :
 MSVOA_W
 ClientSampleId :
 GB3G9

Quant Method : Z:\voasrv\HPCHEM1\MSVOA_W\Method\SFAMWLM041421SMA.M
 Quant Title : SFAM01.0

TIC Library : C:\DATABASE\NIST11.L
 TIC Integration Parameters: LSCINT.P



Data Path : Z:\voasrv\HPCHEM1\MSVOA_W\Data\VW042721\
Data File : VW018808.D
Acq On : 27 Apr 2021 17:09
Operator : SY/VA
Sample : M2166-06
Misc : 6.05G/10ML/MSVOA_W/SOIL
ALS Vial : 14 Sample Multiplier: 1

Instrument :
MSVOA_W
ClientSampleId :
GB3G9

Quant Method : Z:\voasrv\HPCHEM1\MSVOA_W\Method\SFAMWLM041421SMA.M
Quant Title : SFAM01.0

TIC Library : C:\DATABASE\NIST11.L
TIC Integration Parameters: LSCINT.P

No Library Search Compounds Detected

Data Path : Z:\voasrv\HPCHEM1\MSVOA_W\Data\VW042721\
Data File : VW018808.D
Acq On : 27 Apr 2021 17:09
Operator : SY/VA
Sample : M2166-06
Misc : 6.05G/10ML/MSVOA_W/SOIL
ALS Vial : 14 Sample Multiplier: 1

Instrument :
MSVOA_W
ClientSampleId :
GB3G9

Quant Method : Z:\voasrv\HPCHEM1\MSVOA_W\Method\SFAMWLM041421SMA.M
Quant Title : SFAM01.0

TIC Library : C:\DATABASE\NIST11.L
TIC Integration Parameters: LSCINT.P

TIC Top Hit name	RT	EstConc	Units	Response	--Internal Standard--		
					#	RT	Resp Conc
