

Data Path : Z:\voasrv\HPCHEM1\MSVOA\_W\Data\VW042722\  
 Data File : VW022652.D  
 Acq On : 27 Apr 2022 19:08  
 Operator : SY/VA  
 Sample : N2562-20MSD  
 Misc : 6.73g/10mL/MSVOA\_W/SOIL  
 ALS Vial : 1 Sample Multiplier: 1

Instrument :  
 MSVOA\_W  
 ClientSampleId :  
 EW478MSD

Quant Time: Apr 28 01:14:56 2022  
 Quant Method : Z:\voasrv\HPCHEM1\MSVOA\_W\Method\SFAMWLM040722SMA.M  
 Quant Title : SFAM01.0  
 QLast Update : Thu Apr 28 01:10:03 2022  
 Response via : Initial Calibration

Compound	R.T.	QIon	Response	Conc	Units	Dev(Min)
Internal Standards						
1) 1,4-Difluorobenzene	8.842	114	368589	25.000	ug/L	0.00
28) Chlorobenzene-d5	11.628	117	338684	25.000	ug/L	0.00
58) 1,4-Dichlorobenzene-d4	13.554	152	159906	25.000	ug/L	0.00
System Monitoring Compounds						
4) Vinyl Chloride-d3	2.355	65	97245	11.934	ug/L	0.00
Spiked Amount	25.000	Range 30 - 150	Recovery =	47.720%		
7) Chloroethane-d5	2.885	69	80361	15.736	ug/L	0.00
Spiked Amount	25.000	Range 30 - 150	Recovery =	62.960%		
11) 1,1-Dichloroethene-d2	4.025	63	169248	16.014	ug/L	0.00
Spiked Amount	25.000	Range 45 - 110	Recovery =	64.040%		
21) 2-Butanone-d5	7.080	46	57013	40.077	ug/L	0.00
Spiked Amount	50.000	Range 20 - 135	Recovery =	80.160%		
24) Chloroform-d	7.647	84	236012	20.486	ug/L	0.00
Spiked Amount	25.000	Range 40 - 150	Recovery =	81.960%		
26) 1,2-Dichloroethane-d4	8.305	65	119114	18.095	ug/L	0.00
Spiked Amount	25.000	Range 70 - 130	Recovery =	72.400%		
32) Benzene-d6	8.275	84	388733	18.786	ug/L	0.00
Spiked Amount	25.000	Range 20 - 135	Recovery =	75.160%		
36) 1,2-Dichloropropane-d6	9.274	67	125068	20.886	ug/L	0.00
Spiked Amount	25.000	Range 70 - 120	Recovery =	83.560%		
41) Toluene-d8	10.323	98	354708	17.503	ug/L	0.00
Spiked Amount	25.000	Range 30 - 130	Recovery =	70.000%		
43) trans-1,3-Dichloroprop...	10.579	79	48494	17.160	ug/L	0.00
Spiked Amount	25.000	Range 30 - 135	Recovery =	68.640%		
47) 2-Hexanone-d5	10.920	63	46430	41.675	ug/L	0.00
Spiked Amount	50.000	Range 20 - 135	Recovery =	83.340%		
56) 1,1,2,2-Tetrachloroeth...	12.688	84	113217	22.236	ug/L	0.00
Spiked Amount	25.000	Range 45 - 120	Recovery =	88.960%		
66) 1,2-Dichlorobenzene-d4	13.847	152	122477	21.624	ug/L	0.00
Spiked Amount	25.000	Range 75 - 120	Recovery =	86.480%		
Target Compounds						
2) Dichlorodifluoromethane	2.007	85	37025	20.492	ug/L	94
3) Chloromethane	2.221	50	88861	19.726	ug/L	99
5) Vinyl chloride	2.361	62	186805	19.873	ug/L	94
6) Bromomethane	2.782	94	109283	19.125	ug/L	98
8) Chloroethane	2.922	64	89620	21.778	ug/L	94
9) Trichlorofluoromethane	3.257	101	95541	27.531	ug/L	99
10) 1,1,2-Trichloro-1,2,2-...	4.068	101	129503	23.435	ug/L	95
12) 1,1-Dichloroethene	4.038	96	119248	24.028	ug/L	85
13) Acetone	4.123	43	50632	52.274	ug/L	91
14) Carbon disulfide	4.385	76	284130	17.403	ug/L	99
15) Methyl Acetate	4.672	43	42497	17.484	ug/L	95
16) Methylene chloride	4.915	84	162459	29.292	ug/L	88
17) trans-1,2-Dichloroethene	5.428	96	132075	22.718	ug/L	96
18) Methyl tert-butyl Ether	5.434	73	202444	21.321	ug/L #	85
19) 1,1-Dichloroethane	6.220	63	240186	22.642	ug/L	96
20) cis-1,2-Dichloroethene	7.171	96	148557	24.194	ug/L #	90
22) 2-Butanone	7.171	43	66681	45.582	ug/L	98
23) Bromochloromethane	7.513	128	63463	24.016	ug/L	94
25) Chloroform	7.677	83	271642	24.313	ug/L	99

Data Path : Z:\voasrv\HPCHEM1\MSVOA\_W\Data\VW042722\  
 Data File : VW022652.D  
 Acq On : 27 Apr 2022 19:08  
 Operator : SY/VA  
 Sample : N2562-20MSD  
 Misc : 6.73g/10mL/MSVOA\_W/SOIL  
 ALS Vial : 1 Sample Multiplier: 1

Instrument :  
 MSVOA\_W  
 ClientSampleId :  
 EW478MSD

Quant Time: Apr 28 01:14:56 2022  
 Quant Method : Z:\voasrv\HPCHEM1\MSVOA\_W\Method\SFAMWLM040722SMA.M  
 Quant Title : SFAM01.0  
 QLast Update : Thu Apr 28 01:10:03 2022  
 Response via : Initial Calibration

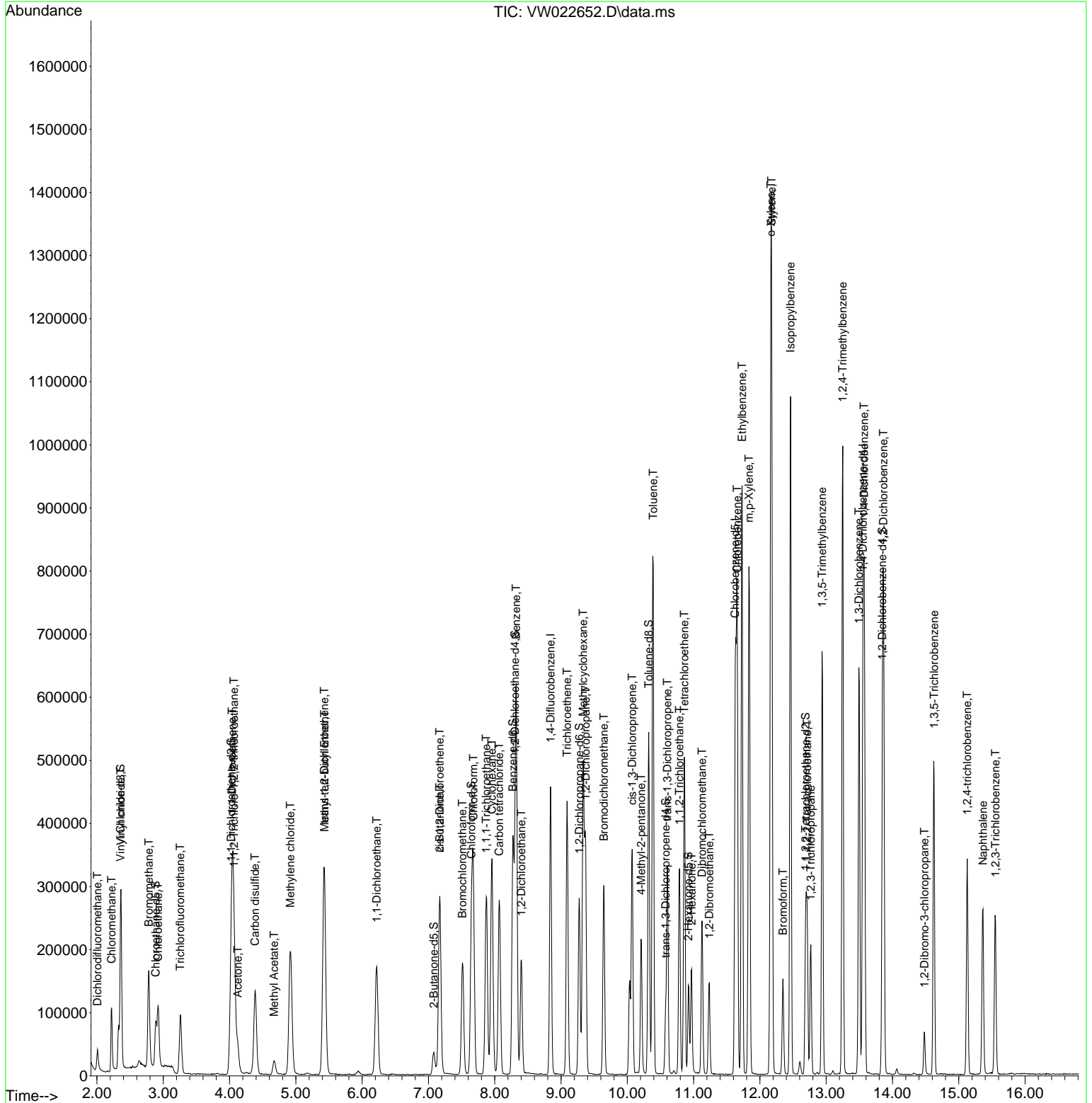
Compound	R.T.	QIon	Response	Conc	Units	Dev(Min)
27) 1,2-Dichloroethane	8.403	62	162343	20.673	ug/L	97
29) Cyclohexane	7.958	56	180845	18.656	ug/L	93
30) 1,1,1-Trichloroethane	7.872	97	228368	24.308	ug/L	97
31) Carbon tetrachloride	8.067	117	202834	24.055	ug/L	98
33) Benzene	8.323	78	551353	23.978	ug/L	100
34) Trichloroethene	9.092	95	145990	23.712	ug/L	95
35) Methylcyclohexane	9.335	83	208987	18.919	ug/L	94
37) 1,2-Dichloropropane	9.372	63	133439	24.223	ug/L	100
38) Bromodichloromethane	9.646	83	190453	24.042	ug/L #	99
39) cis-1,3-Dichloropropene	10.073	75	203742	23.308	ug/L	100
40) 4-Methyl-2-pentanone	10.207	43	133247	39.635	ug/L	95
42) Toluene	10.390	91	615400	23.356	ug/L	97
44) trans-1,3-Dichloropropene	10.603	75	171424	21.902	ug/L	95
45) 1,1,2-Trichloroethane	10.786	97	102090	24.283	ug/L	91
46) Tetrachloroethene	10.860	164	100438	22.193	ug/L	95
48) 2-Hexanone	10.969	43	103365	43.582	ug/L	95
49) Dibromochloromethane	11.128	129	125123	24.955	ug/L	91
50) 1,2-Dibromoethane	11.238	107	95083	22.904	ug/L	96
51) Chlorobenzene	11.658	112	385704	23.954	ug/L	94
52) Ethylbenzene	11.731	91	668370	22.630	ug/L	95
53) m,p-Xylene	11.835	106	264441	23.548	ug/L	90
54) o-Xylene	12.164	106	253933	23.663	ug/L	97
55) Styrene	12.176	104	422355	23.036	ug/L	98
57) 1,1,2,2-Tetrachloroethane	12.713	83	112677	21.836	ug/L	99
59) Bromoform	12.347	173	60532	25.475	ug/L	98
60) Isopropylbenzene	12.463	105	685689	25.814	ug/L	98
61) 1,2,3-Trichloropropane	12.768	75	80733	23.734	ug/L	97
62) 1,3,5-Trimethylbenzene	12.938	105	359795	24.629	ug/L	98
63) 1,2,4-Trimethylbenzene	13.249	105	541425	24.373	ug/L	97
64) 1,3-Dichlorobenzene	13.493	146	257697	23.904	ug/L	95
65) 1,4-Dichlorobenzene	13.572	146	260023	24.185	ug/L	96
67) 1,2-Dichlorobenzene	13.865	146	227583	23.605	ug/L	95
68) 1,2-Dibromo-3-chloropr...	14.481	75	15694	19.894	ug/L #	82
69) 1,3,5-Trichlorobenzene	14.627	180	136047	19.342	ug/L	99
70) 1,2,4-trichlorobenzene	15.127	180	93684	15.859	ug/L	94
71) Naphthalene	15.365	128	229049	18.384	ug/L	100
72) 1,2,3-Trichlorobenzene	15.554	180	77844	15.417	ug/L	97

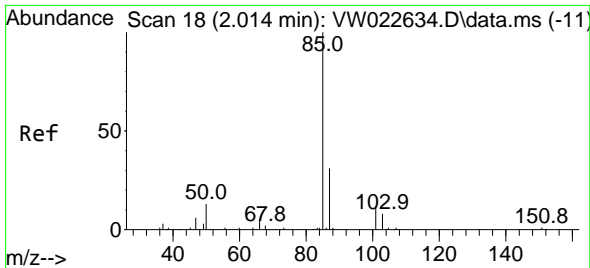
(#) = qualifier out of range (m) = manual integration (+) = signals summed

Data Path : Z:\voasrv\HPCHEM1\MSVOA\_W\Data\VW042722\  
 Data File : VW022652.D  
 Acq On : 27 Apr 2022 19:08  
 Operator : SY/VA  
 Sample : N2562-20MSD  
 Misc : 6.73g/10mL/MSVOA\_W/SOIL  
 ALS Vial : 1 Sample Multiplier: 1

Instrument :  
 MSVOA\_W  
 ClientSampleId :  
 EW478MSD

Quant Time: Apr 28 01:14:56 2022  
 Quant Method : Z:\voasrv\HPCHEM1\MSVOA\_W\Method\SFAMWLM040722SMA.M  
 Quant Title : SFAM01.0  
 QLast Update : Thu Apr 28 01:10:03 2022  
 Response via : Initial Calibration

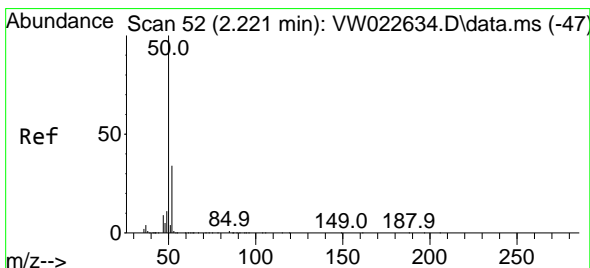
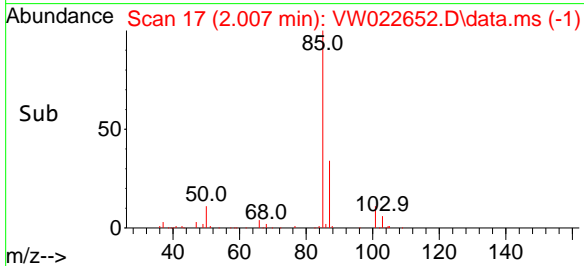
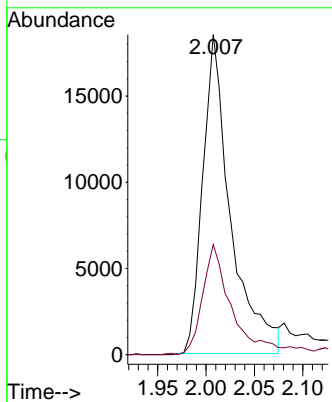
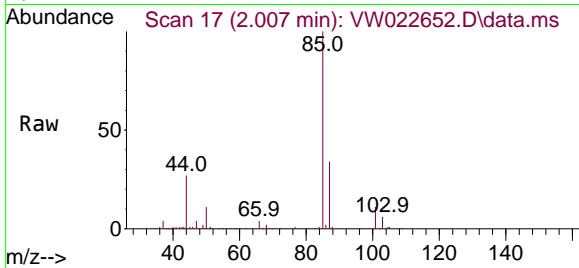




#2  
 Dichlorodifluoromethane  
 Concen: 20.492 ug/L  
 RT: 2.007 min Scan# 11  
 Delta R.T. -0.006 min  
 Lab File: VW022652.D  
 Acq: 27 Apr 2022 19:08

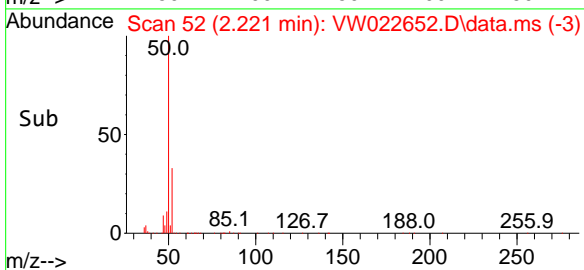
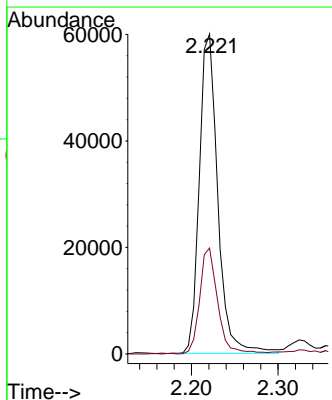
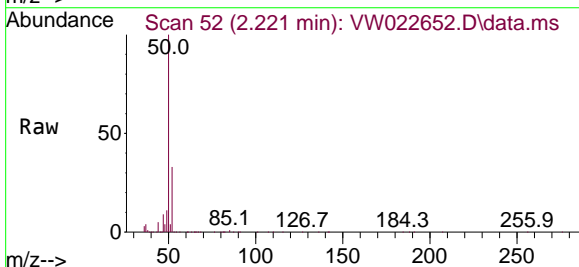
Instrument :  
 MSVOA\_W  
 ClientSampleId :  
 EW478MSD

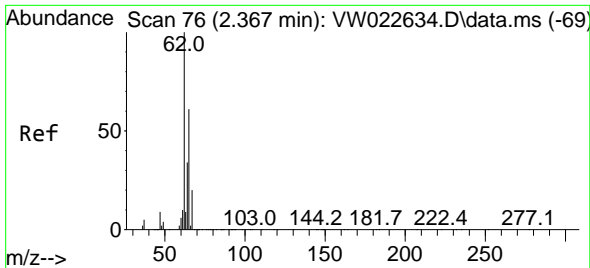
Tgt Ion: 85 Resp: 37025  
 Ion Ratio Lower Upper  
 85 100  
 87 32.6 23.7 35.5



#3  
 Chloromethane  
 Concen: 19.726 ug/L  
 RT: 2.221 min Scan# 52  
 Delta R.T. 0.000 min  
 Lab File: VW022652.D  
 Acq: 27 Apr 2022 19:08

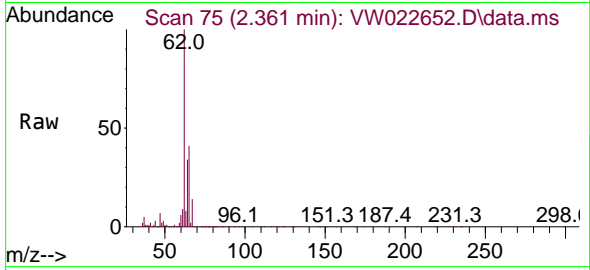
Tgt Ion: 50 Resp: 88861  
 Ion Ratio Lower Upper  
 50 100  
 52 33.1 23.0 42.6



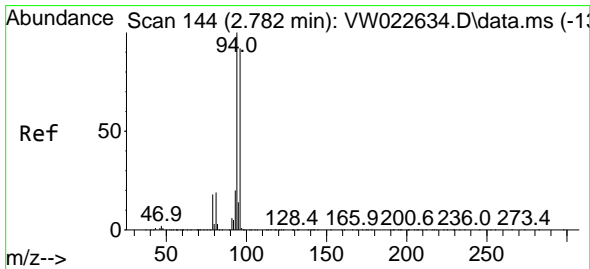
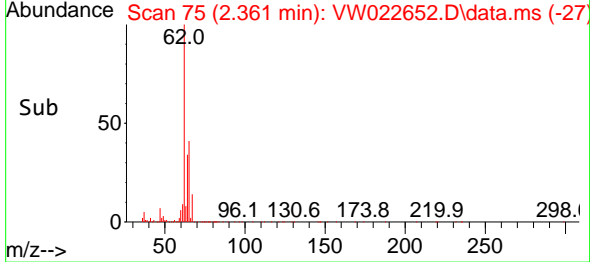
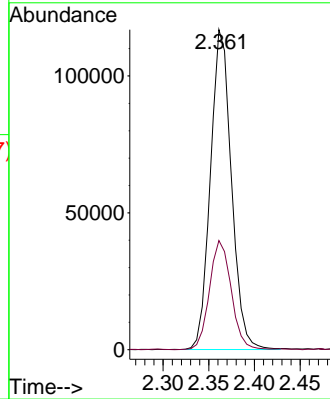


#5  
 Vinyl chloride  
 Concen: 19.873 ug/L  
 RT: 2.361 min Scan# 71  
 Delta R.T. -0.006 min  
 Lab File: VW022652.D  
 Acq: 27 Apr 2022 19:08

Instrument :  
 MSVOA\_W  
 ClientSampleId :  
 EW478MSD

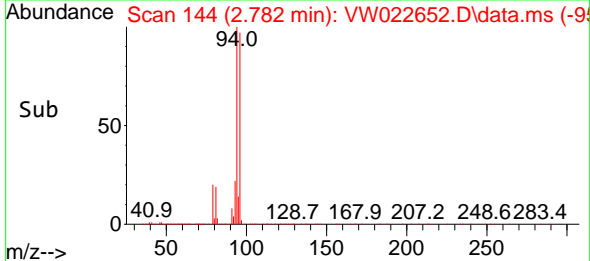
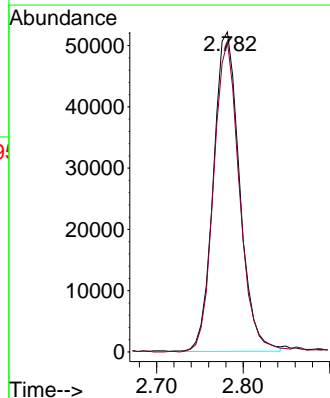
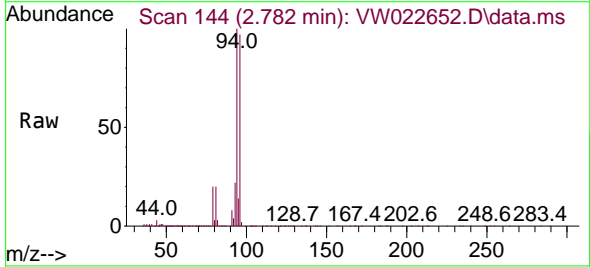


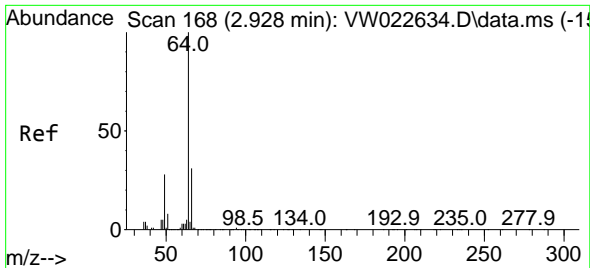
Tgt Ion: 62 Resp: 186805  
 Ion Ratio Lower Upper  
 62 100  
 64 34.1 26.5 49.3



#6  
 Bromomethane  
 Concen: 19.125 ug/L  
 RT: 2.782 min Scan# 144  
 Delta R.T. 0.000 min  
 Lab File: VW022652.D  
 Acq: 27 Apr 2022 19:08

Tgt Ion: 94 Resp: 109283  
 Ion Ratio Lower Upper  
 94 100  
 96 97.0 66.6 123.6

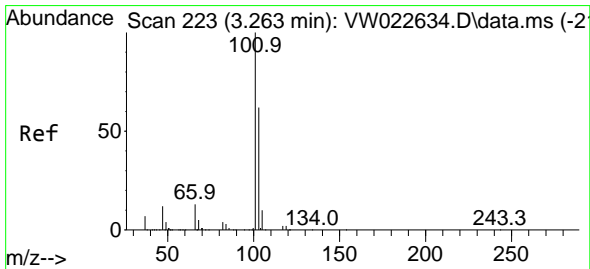
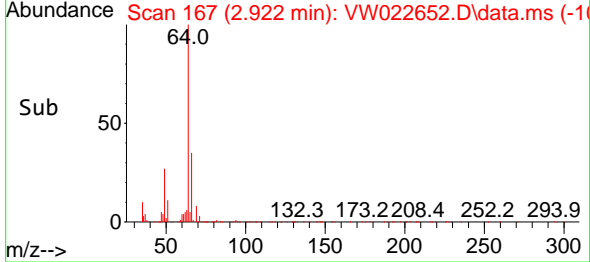
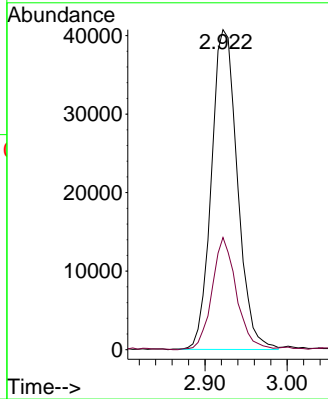
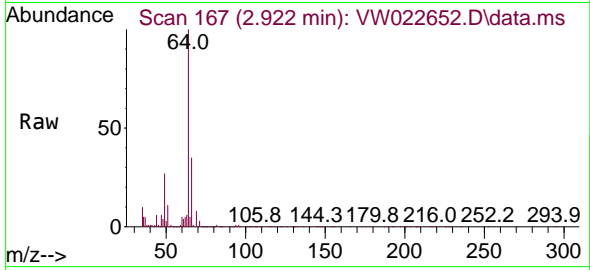




#8  
 Chloroethane  
 Concen: 21.778 ug/L  
 RT: 2.922 min Scan# 167  
 Delta R.T. -0.006 min  
 Lab File: VW022652.D  
 Acq: 27 Apr 2022 19:08

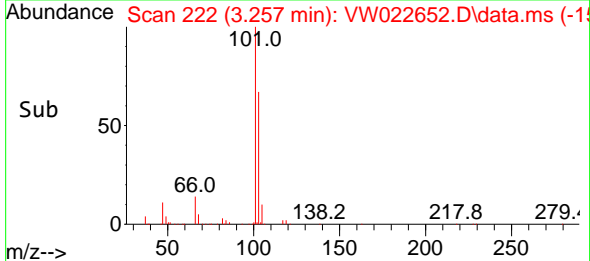
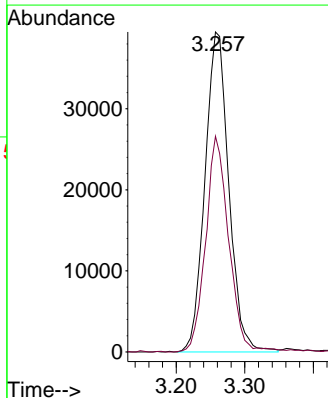
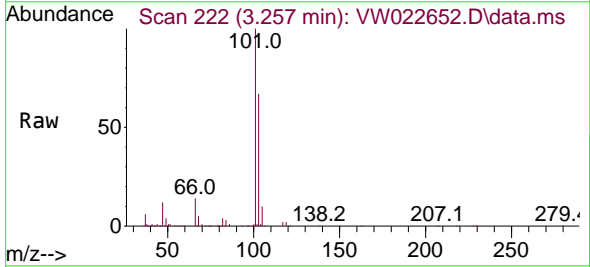
Instrument : MSVOA\_W  
 ClientSampleId : EW478MSD

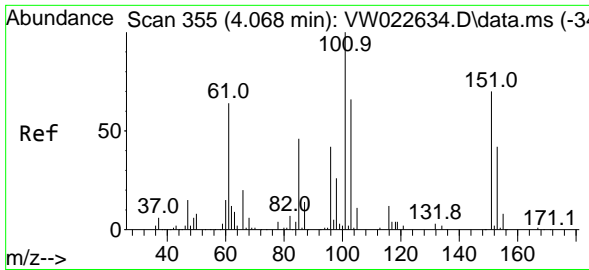
Tgt Ion: 64 Resp: 89620  
 Ion Ratio Lower Upper  
 64 100  
 66 35.1 22.3 41.5



#9  
 Trichlorofluoromethane  
 Concen: 27.531 ug/L  
 RT: 3.257 min Scan# 222  
 Delta R.T. -0.006 min  
 Lab File: VW022652.D  
 Acq: 27 Apr 2022 19:08

Tgt Ion: 101 Resp: 95541  
 Ion Ratio Lower Upper  
 101 100  
 103 64.0 52.0 78.0

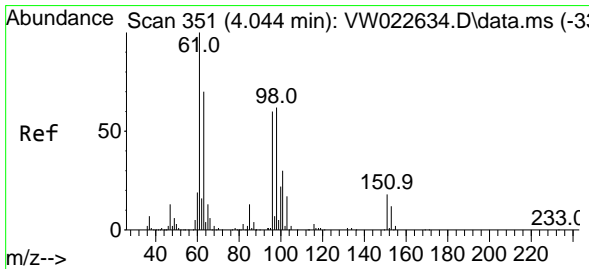
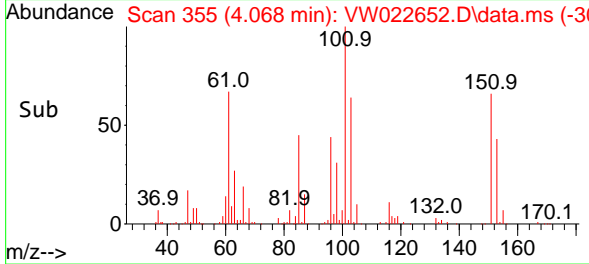
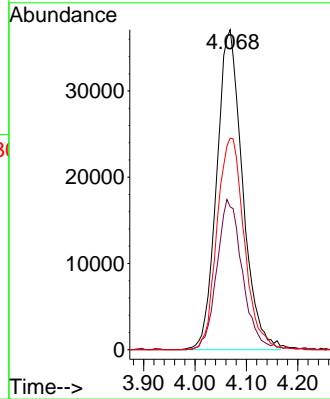
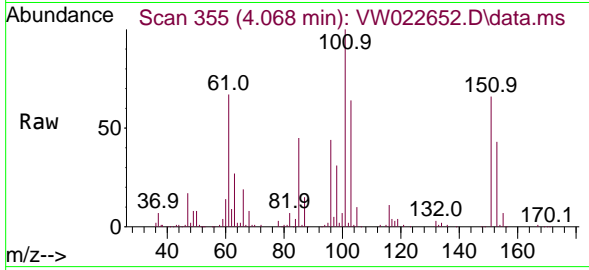




#10  
 1,1,2-Trichloro-1,2,2-trifluoroethane  
 Concen: 23.435 ug/L  
 RT: 4.068 min Scan# 310  
 Delta R.T. 0.000 min  
 Lab File: VW022652.D  
 Acq: 27 Apr 2022 19:08

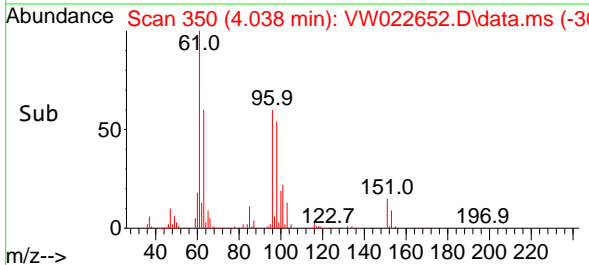
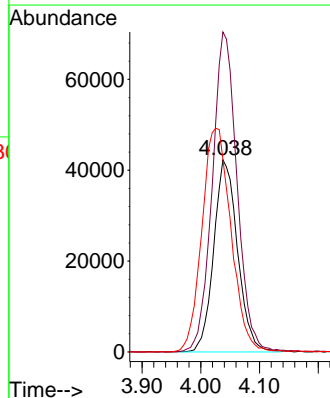
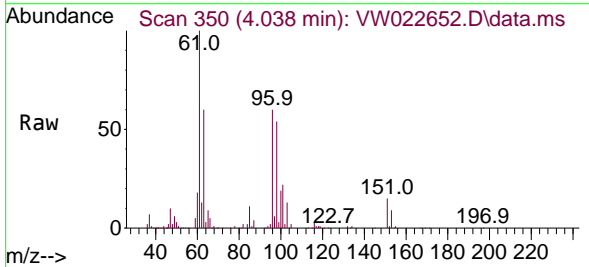
Instrument :  
 MSVOA\_W  
 ClientSampleId :  
 EW478MSD

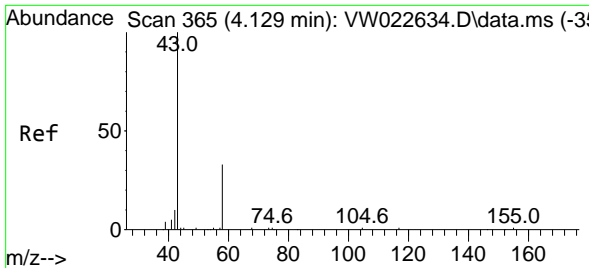
Tgt Ion:101 Resp: 129503  
 Ion Ratio Lower Upper  
 101 100  
 85 46.4 39.2 58.8  
 151 69.9 52.2 78.4



#12  
 1,1-Dichloroethene  
 Concen: 24.028 ug/L  
 RT: 4.038 min Scan# 350  
 Delta R.T. -0.006 min  
 Lab File: VW022652.D  
 Acq: 27 Apr 2022 19:08

Tgt Ion: 96 Resp: 119248  
 Ion Ratio Lower Upper  
 96 100  
 61 166.6 128.0 237.6  
 63 100.3 86.6 160.8

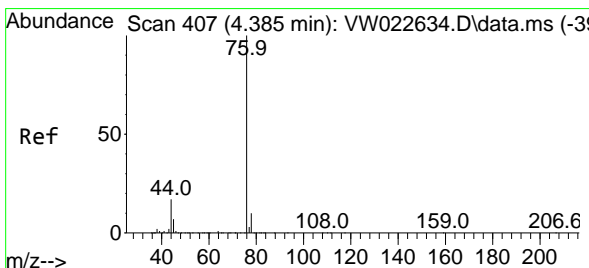
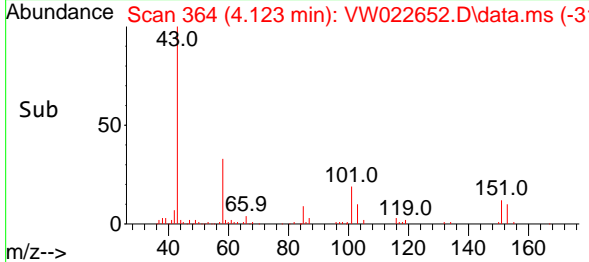
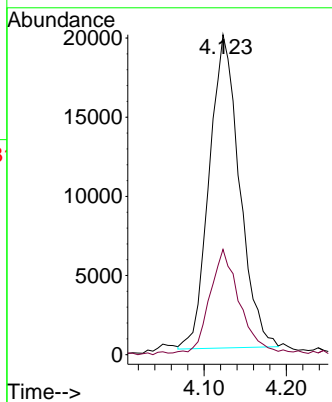
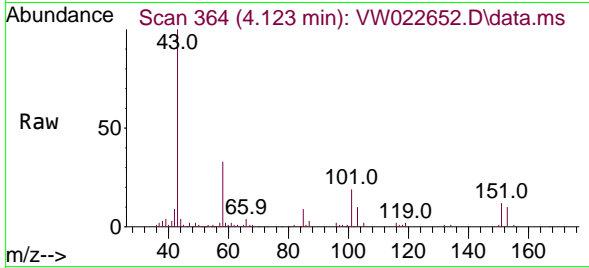




#13  
 Acetone  
 Concen: 52.274 ug/L  
 RT: 4.123 min Scan# 364  
 Delta R.T. -0.006 min  
 Lab File: VW022652.D  
 Acq: 27 Apr 2022 19:08

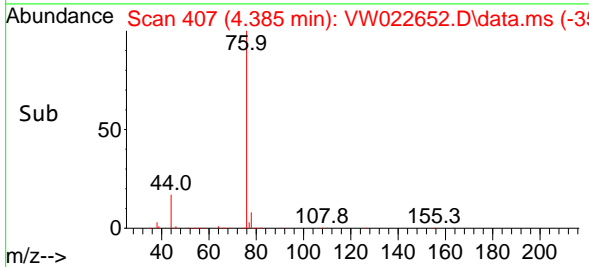
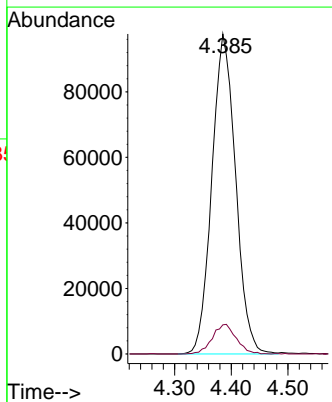
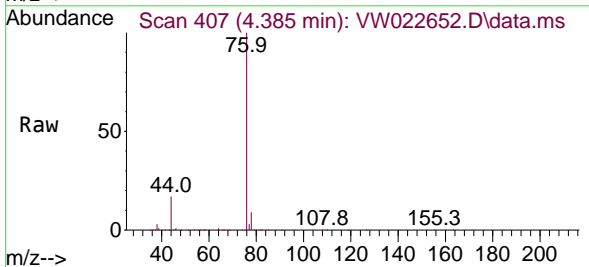
Instrument : MSVOA\_W  
 ClientSampleId : EW478MSD

Tgt Ion: 43 Resp: 50632  
 Ion Ratio Lower Upper  
 43 100  
 58 33.1 0.0 57.0

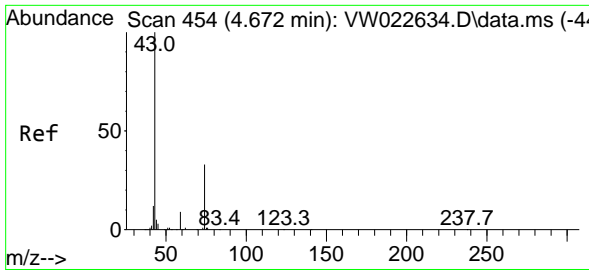


#14  
 Carbon disulfide  
 Concen: 17.403 ug/L  
 RT: 4.385 min Scan# 407  
 Delta R.T. 0.000 min  
 Lab File: VW022652.D  
 Acq: 27 Apr 2022 19:08

Tgt Ion: 76 Resp: 284130  
 Ion Ratio Lower Upper  
 76 100  
 78 9.1 7.6 11.4



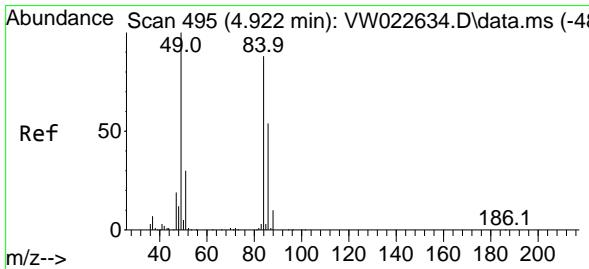
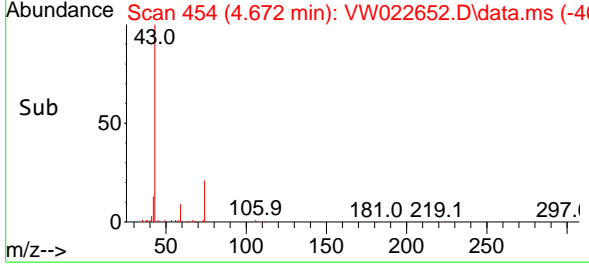
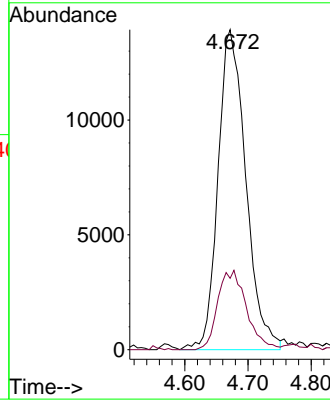
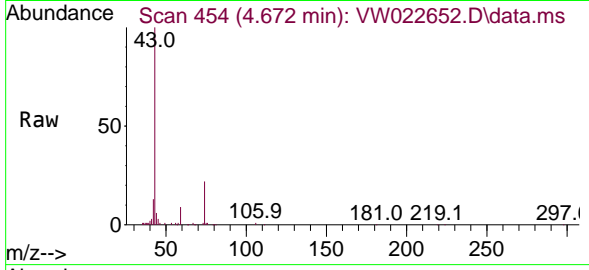




#15  
 Methyl Acetate  
 Concen: 17.484 ug/L  
 RT: 4.672 min Scan# 41  
 Delta R.T. 0.000 min  
 Lab File: VW022652.D  
 Acq: 27 Apr 2022 19:08

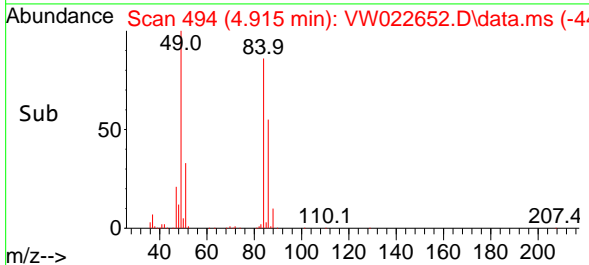
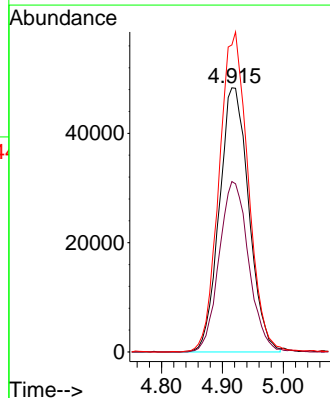
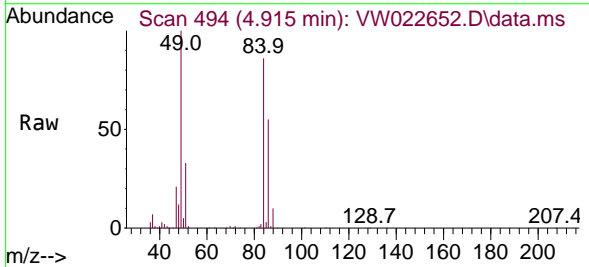
Instrument :  
 MSVOA\_W  
 ClientSampleId :  
 EW478MSD

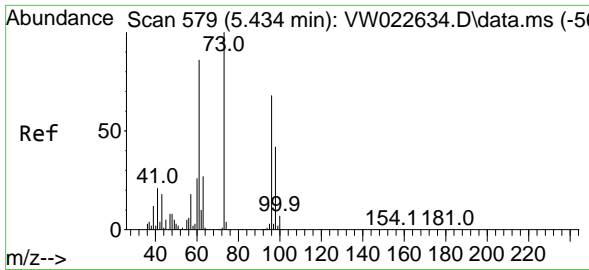
Tgt Ion: 43 Resp: 42497  
 Ion Ratio Lower Upper  
 43 100  
 74 25.7 18.5 27.7



#16  
 Methylene chloride  
 Concen: 29.292 ug/L  
 RT: 4.915 min Scan# 494  
 Delta R.T. -0.006 min  
 Lab File: VW022652.D  
 Acq: 27 Apr 2022 19:08

Tgt Ion: 84 Resp: 162459  
 Ion Ratio Lower Upper  
 84 100  
 86 64.5 42.8 79.4  
 49 116.3 94.2 175.0



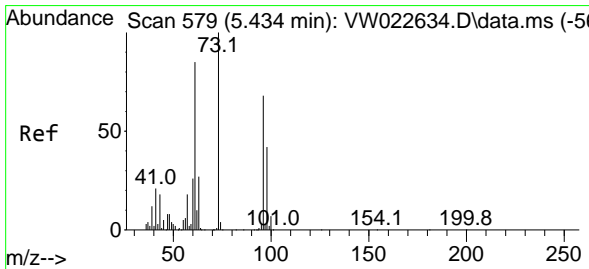
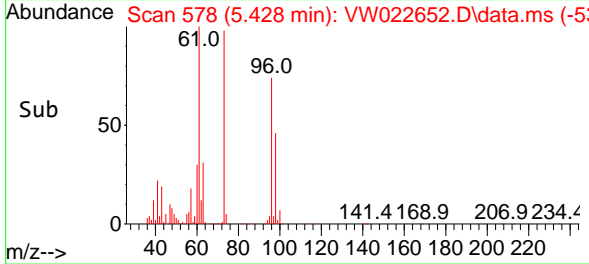
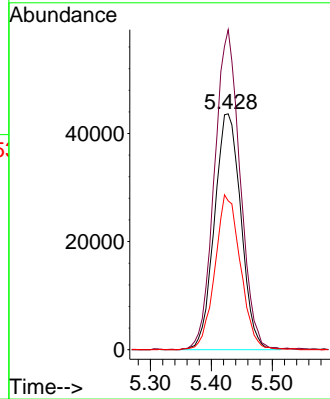
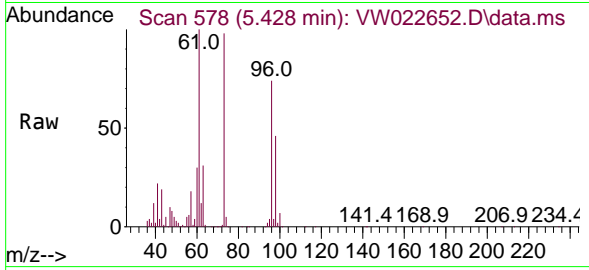


#17  
 trans-1,2-Dichloroethene  
 Concen: 22.718 ug/L  
 RT: 5.428 min Scan# 578  
 Delta R.T. -0.006 min  
 Lab File: VW022652.D  
 Acq: 27 Apr 2022 19:08

Instrument : MSVOA\_W  
 ClientSampleId : EW478MSD

Tgt Ion: 96 Resp: 132075

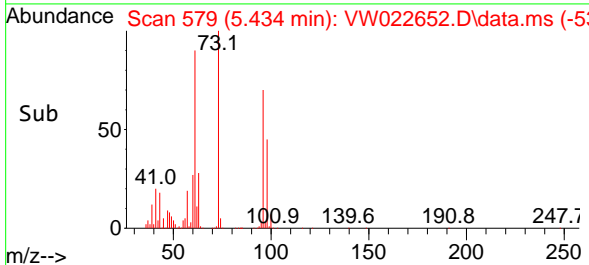
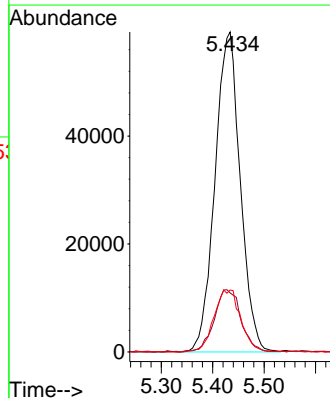
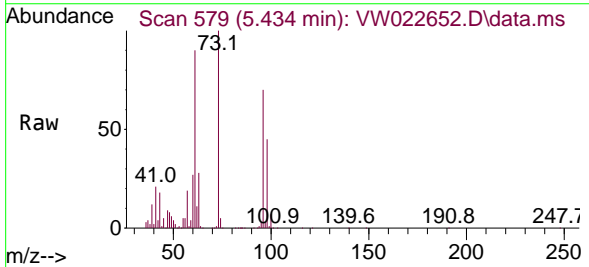
Ion	Ratio	Lower	Upper
96	100		
61	135.7	99.8	185.4
98	63.1	44.6	82.8

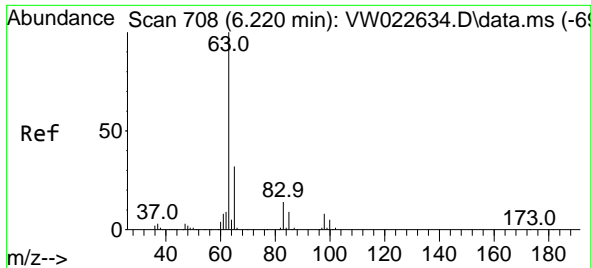


#18  
 Methyl tert-butyl Ether  
 Concen: 21.321 ug/L  
 RT: 5.434 min Scan# 579  
 Delta R.T. 0.000 min  
 Lab File: VW022652.D  
 Acq: 27 Apr 2022 19:08

Tgt Ion: 73 Resp: 202444

Ion	Ratio	Lower	Upper
73	100		
43	20.0	18.8	28.2
57	10.9	17.5	26.3



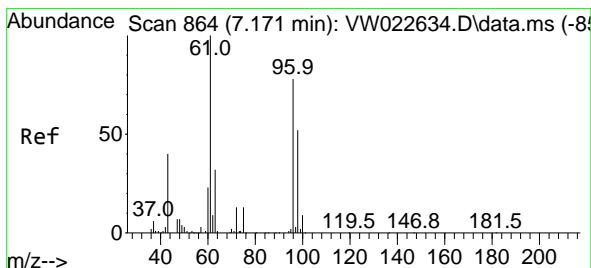
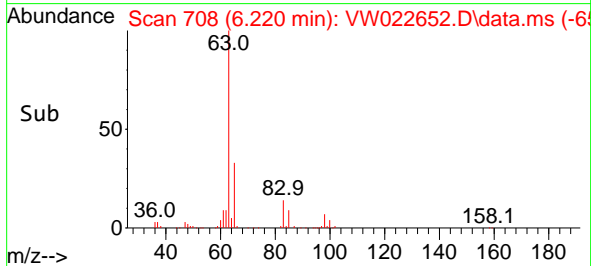
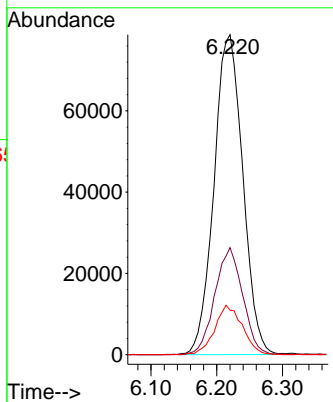
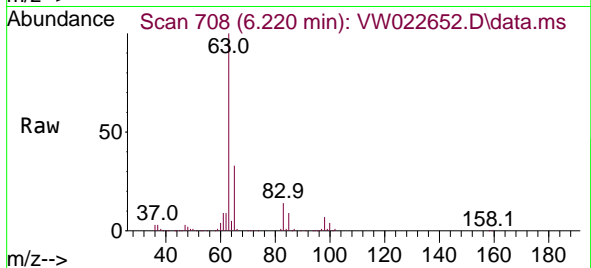


#19  
 1,1-Dichloroethane  
 Concen: 22.642 ug/L  
 RT: 6.220 min Scan# 708  
 Delta R.T. 0.000 min  
 Lab File: VW022652.D  
 Acq: 27 Apr 2022 19:08

Instrument : MSVOA\_W  
 ClientSampleId : EW478MSD

Tgt Ion: 63 Resp: 240186

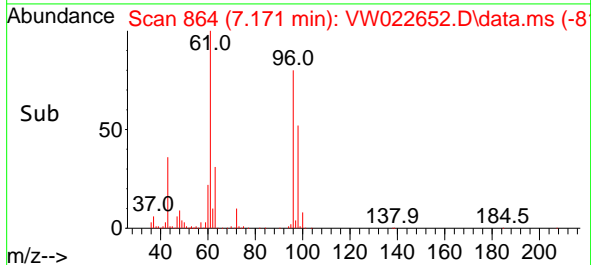
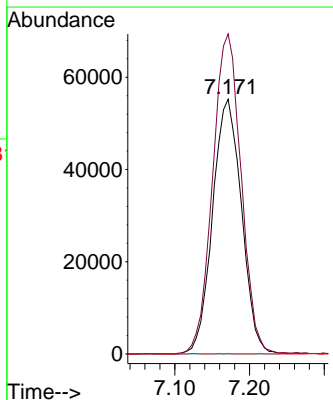
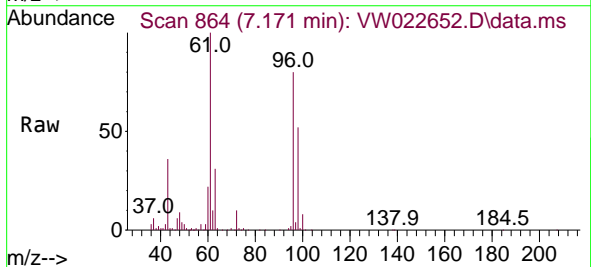
Ion	Ratio	Lower	Upper
63	100		
65	33.4	21.1	39.3
83	13.9	10.1	18.9

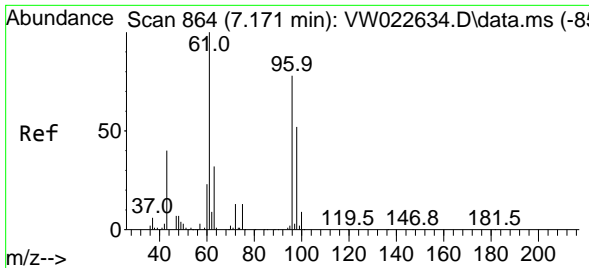


#20  
 cis-1,2-Dichloroethene  
 Concen: 24.194 ug/L  
 RT: 7.171 min Scan# 864  
 Delta R.T. 0.000 min  
 Lab File: VW022652.D  
 Acq: 27 Apr 2022 19:08

Tgt Ion: 96 Resp: 148557

Ion	Ratio	Lower	Upper
96	100		
61	125.7	96.4	179.0
68	0.1	0.1	0.3

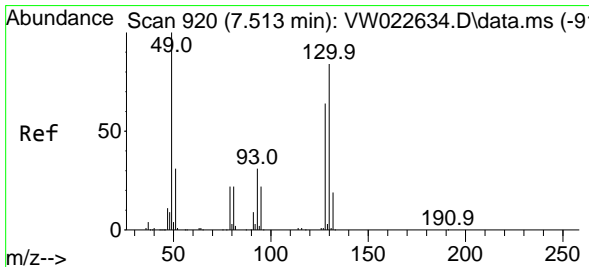
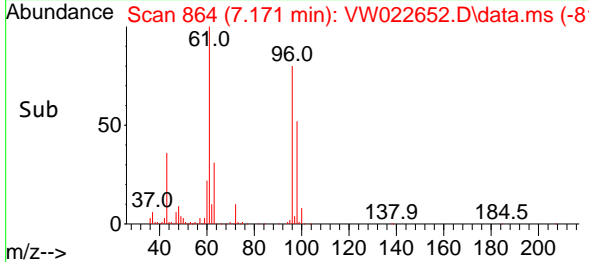
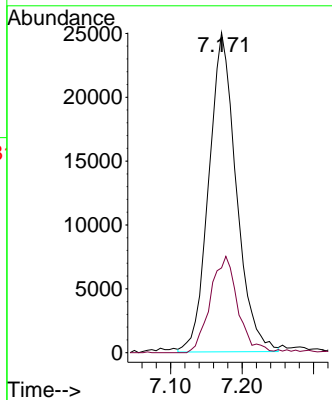
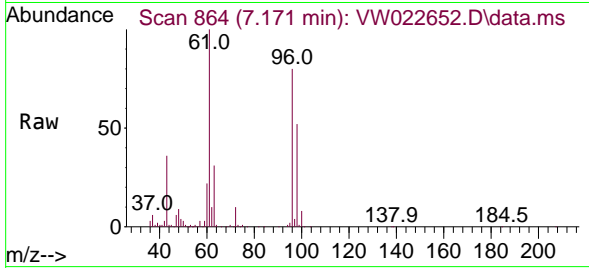




#22  
 2-Butanone  
 Concen: 45.582 ug/L  
 RT: 7.171 min Scan# 80  
 Delta R.T. 0.000 min  
 Lab File: VW022652.D  
 Acq: 27 Apr 2022 19:08

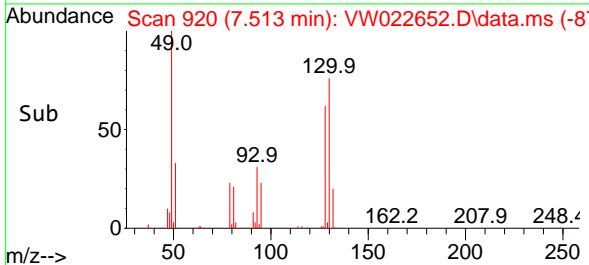
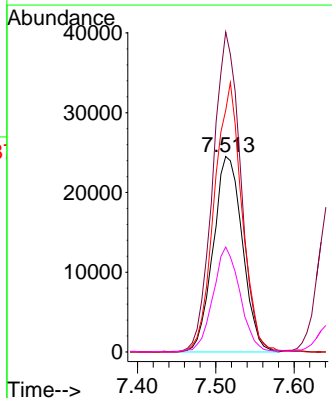
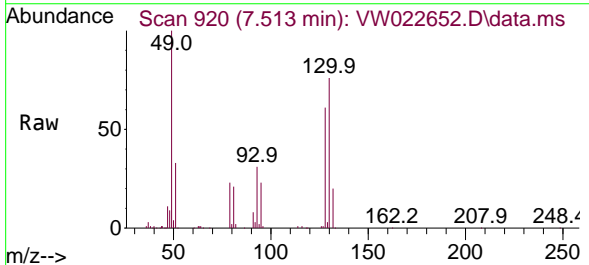
Instrument : MSVOA\_W  
 ClientSampleId : EW478MSD

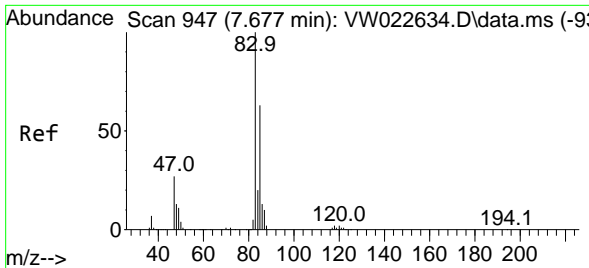
Tgt Ion: 43 Resp: 66681  
 Ion Ratio Lower Upper  
 43 100  
 72 29.0 14.0 42.0



#23  
 Bromochloromethane  
 Concen: 24.016 ug/L  
 RT: 7.513 min Scan# 920  
 Delta R.T. 0.000 min  
 Lab File: VW022652.D  
 Acq: 27 Apr 2022 19:08

Tgt Ion:128 Resp: 63463  
 Ion Ratio Lower Upper  
 128 100  
 49 163.7 120.8 224.3  
 130 123.6 81.8 151.8  
 51 53.7 40.5 60.7

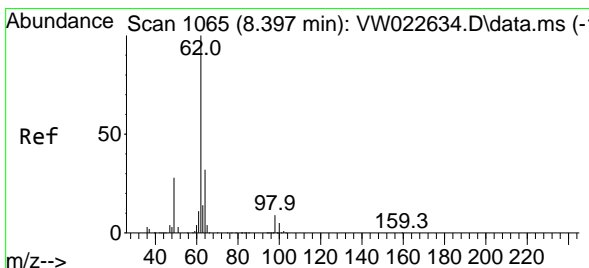
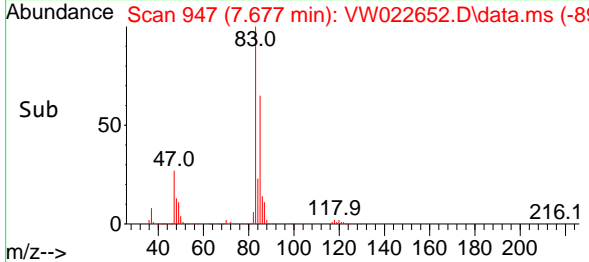
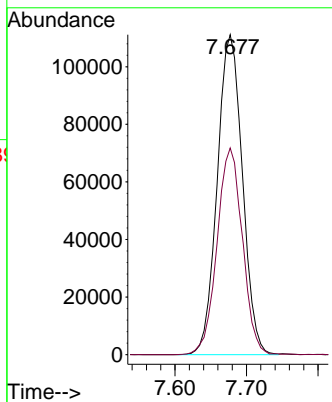
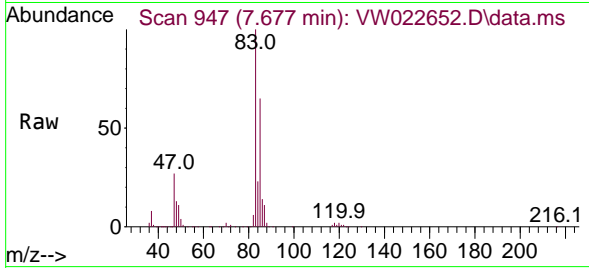




#25  
 Chloroform  
 Concen: 24.313 ug/L  
 RT: 7.677 min Scan# 94  
 Delta R.T. 0.000 min  
 Lab File: VW022652.D  
 Acq: 27 Apr 2022 19:08

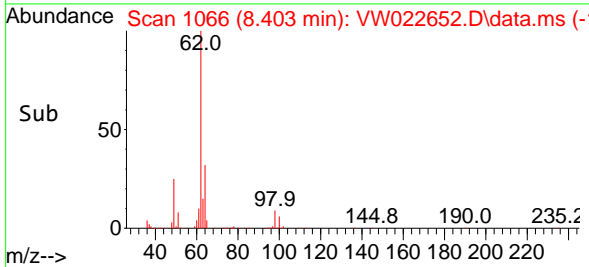
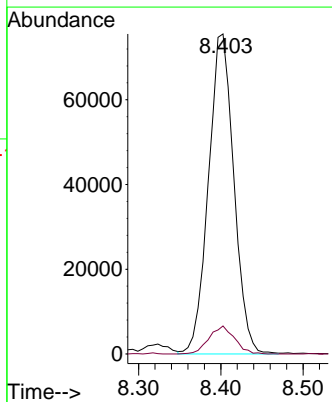
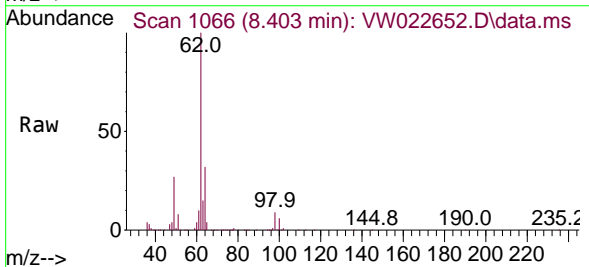
Instrument : MSVOA\_W  
 ClientSampleId : EW478MSD

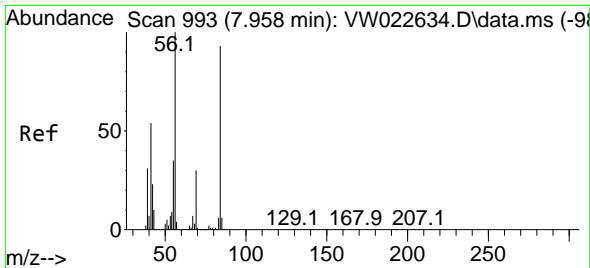
Tgt Ion: 83 Resp: 271642  
 Ion Ratio Lower Upper  
 83 100  
 85 64.6 45.8 85.0



#27  
 1,2-Dichloroethane  
 Concen: 20.673 ug/L  
 RT: 8.403 min Scan# 1066  
 Delta R.T. 0.006 min  
 Lab File: VW022652.D  
 Acq: 27 Apr 2022 19:08

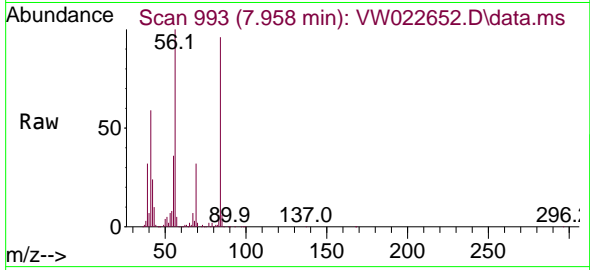
Tgt Ion: 62 Resp: 162343  
 Ion Ratio Lower Upper  
 62 100  
 98 8.7 6.2 9.2





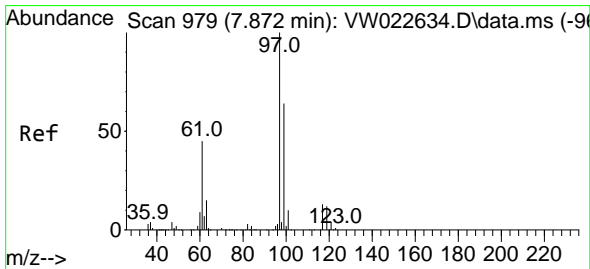
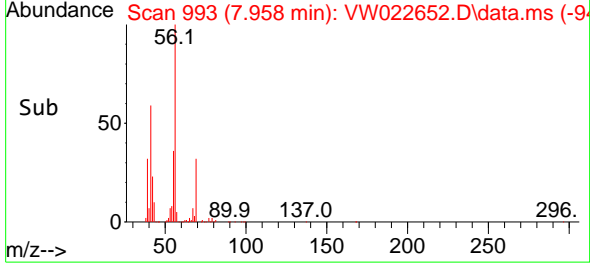
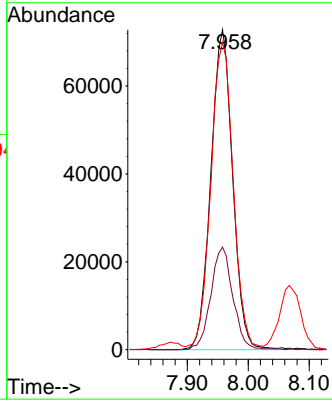
#29  
 Cyclohexane  
 Concen: 18.656 ug/L  
 RT: 7.958 min Scan# 993  
 Delta R.T. 0.000 min  
 Lab File: VW022652.D  
 Acq: 27 Apr 2022 19:08

Instrument : MSVOA\_W  
 ClientSampleId : EW478MSD



Tgt Ion: 56 Resp: 180845

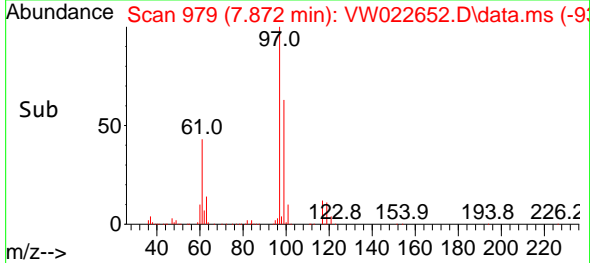
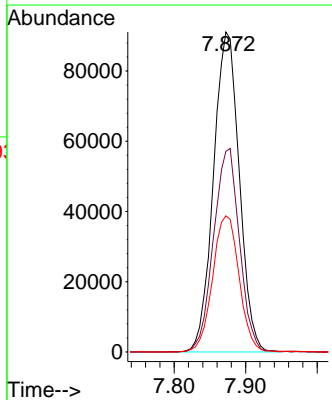
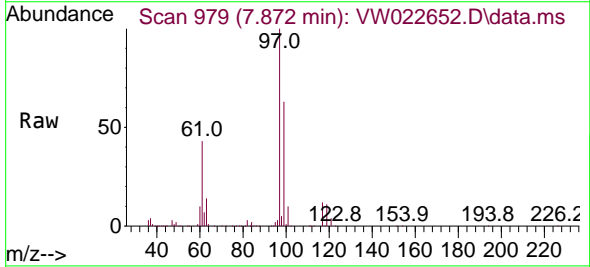
Ion	Ratio	Lower	Upper
56	100		
69	32.2	24.4	36.6
84	99.1	72.6	108.8

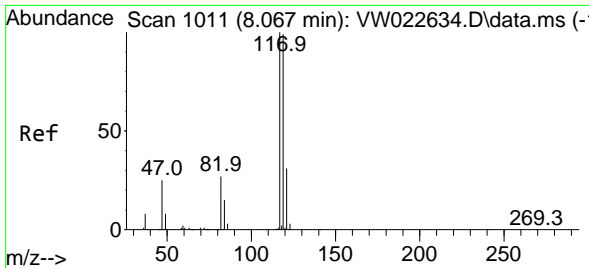


#30  
 1,1,1-Trichloroethane  
 Concen: 24.308 ug/L  
 RT: 7.872 min Scan# 979  
 Delta R.T. 0.000 min  
 Lab File: VW022652.D  
 Acq: 27 Apr 2022 19:08

Tgt Ion: 97 Resp: 228368

Ion	Ratio	Lower	Upper
97	100		
99	64.1	51.7	77.5
61	43.7	38.7	58.1

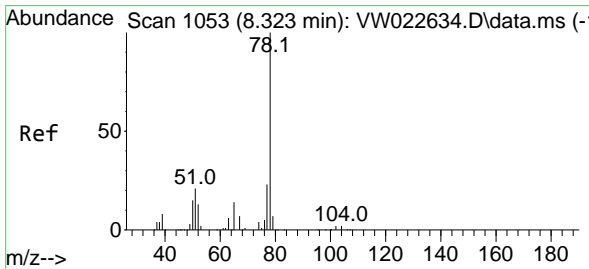
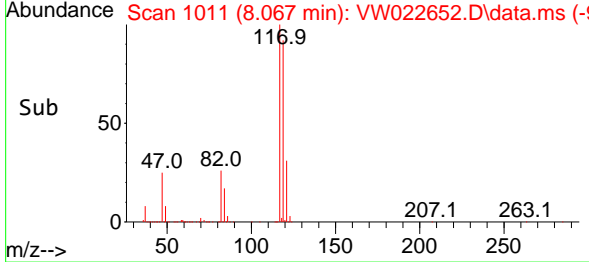
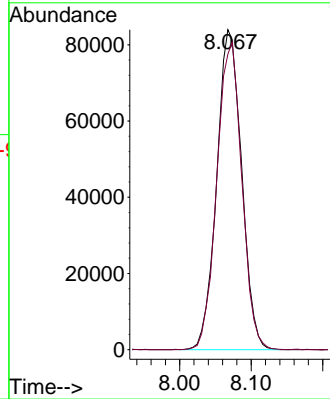
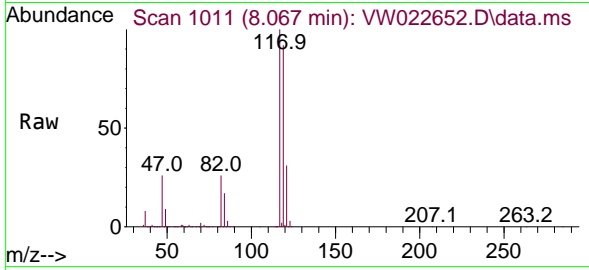




#31  
 Carbon tetrachloride  
 Concen: 24.055 ug/L  
 RT: 8.067 min Scan# 1011  
 Delta R.T. 0.000 min  
 Lab File: VW022652.D  
 Acq: 27 Apr 2022 19:08

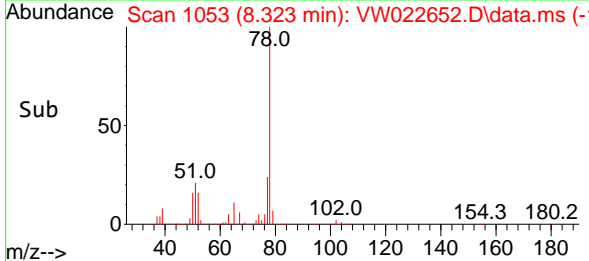
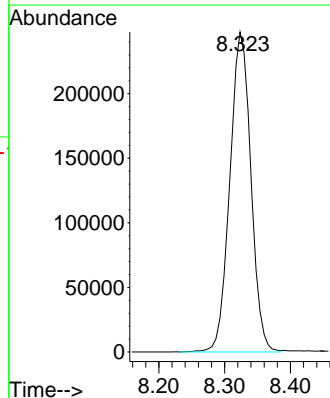
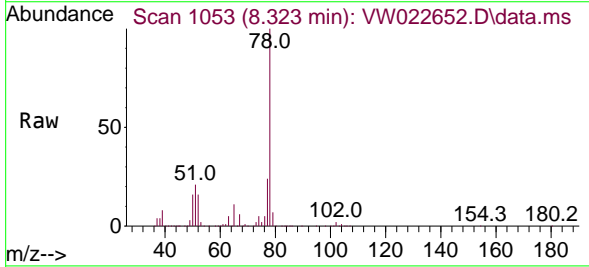
Instrument : MSVOA\_W  
 ClientSampleId : EW478MSD

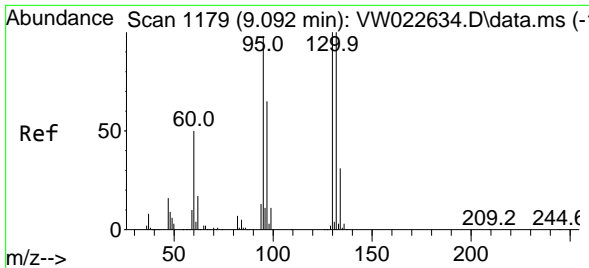
Tgt Ion:117 Resp: 202834  
 Ion Ratio Lower Upper  
 117 100  
 119 96.5 75.5 113.3



#33  
 Benzene  
 Concen: 23.978 ug/L  
 RT: 8.323 min Scan# 1053  
 Delta R.T. 0.000 min  
 Lab File: VW022652.D  
 Acq: 27 Apr 2022 19:08

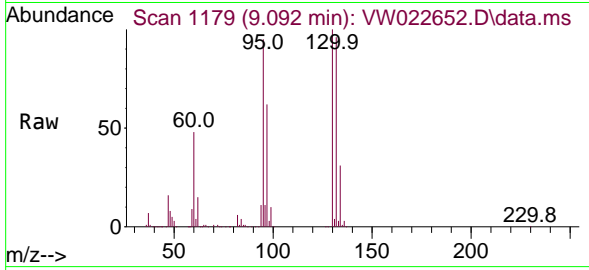
Tgt Ion: 78 Resp: 551353





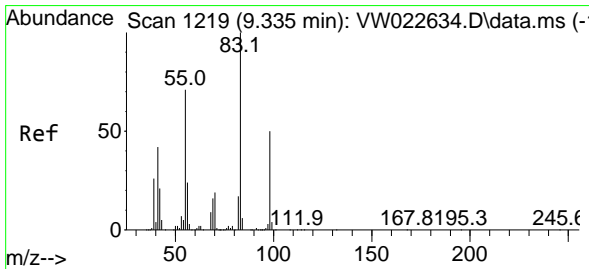
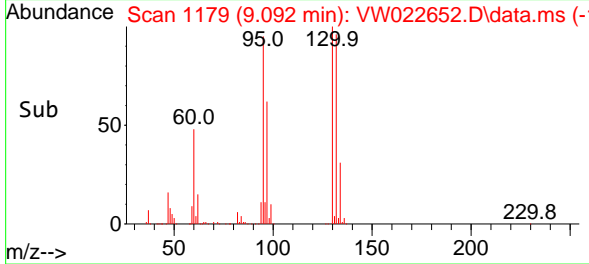
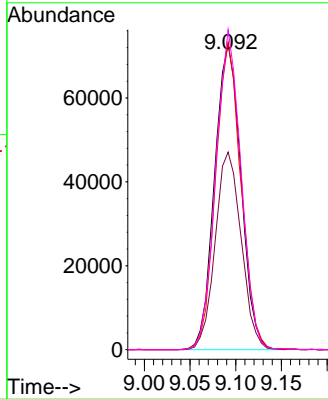
#34  
 Trichloroethene  
 Concen: 23.712 ug/L  
 RT: 9.092 min Scan# 1179  
 Delta R.T. 0.000 min  
 Lab File: VW022652.D  
 Acq: 27 Apr 2022 19:08

Instrument : MSVOA\_W  
 ClientSampleId : EW478MSD



Tgt Ion: 95 Resp: 145990

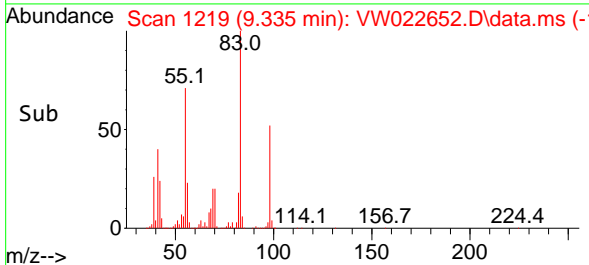
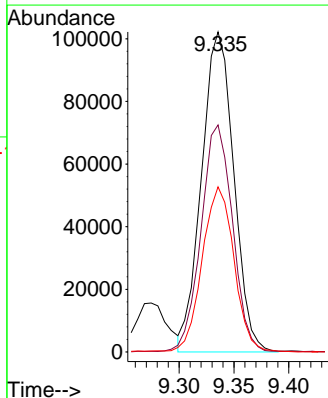
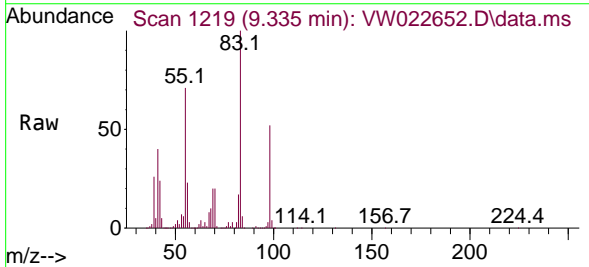
Ion	Ratio	Lower	Upper
95	100		
97	64.8	46.4	86.2
132	100.9	67.4	125.2
130	104.9	68.4	127.0



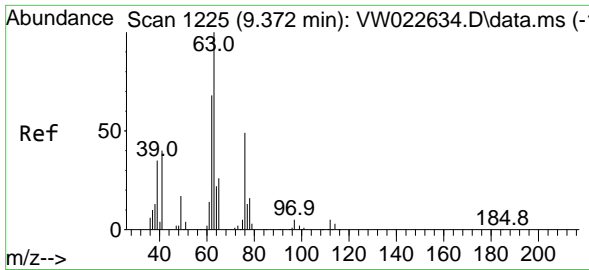
#35  
 Methylcyclohexane  
 Concen: 18.919 ug/L  
 RT: 9.335 min Scan# 1219  
 Delta R.T. 0.000 min  
 Lab File: VW022652.D  
 Acq: 27 Apr 2022 19:08

Tgt Ion: 83 Resp: 208987

Ion	Ratio	Lower	Upper
83	100		
55	69.6	61.0	91.6
98	50.9	39.2	58.8



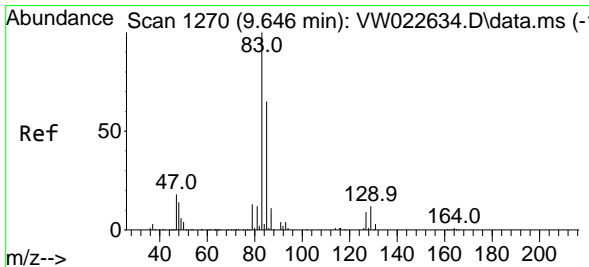
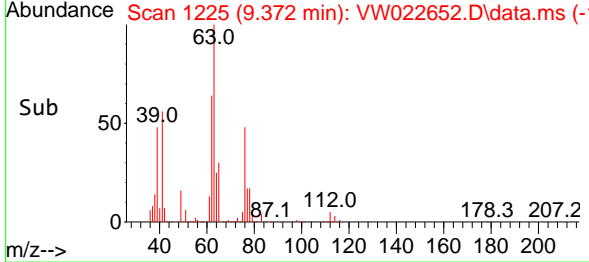
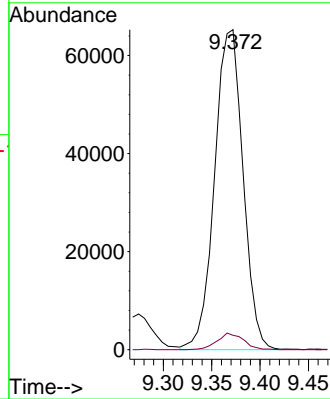
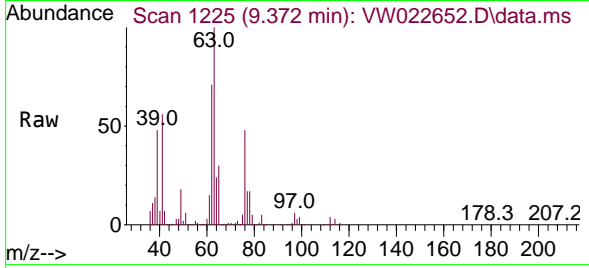




#37  
 1,2-Dichloropropane  
 Concen: 24.223 ug/L  
 RT: 9.372 min Scan# 111  
 Delta R.T. 0.000 min  
 Lab File: VW022652.D  
 Acq: 27 Apr 2022 19:08

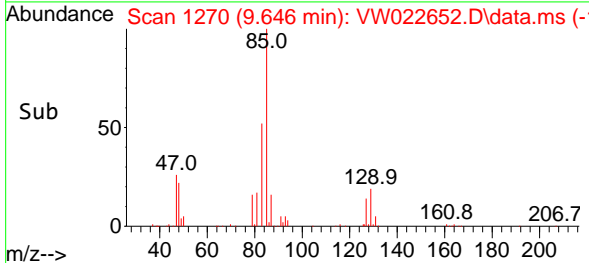
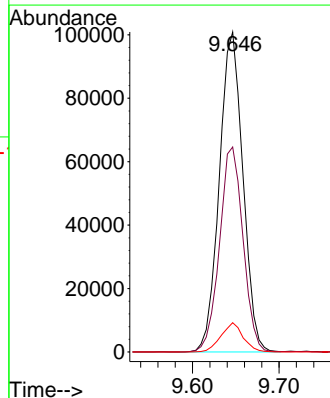
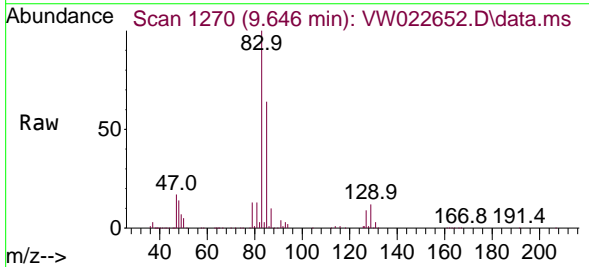
Instrument :  
 MSVOA\_W  
 ClientSampleId :  
 EW478MSD

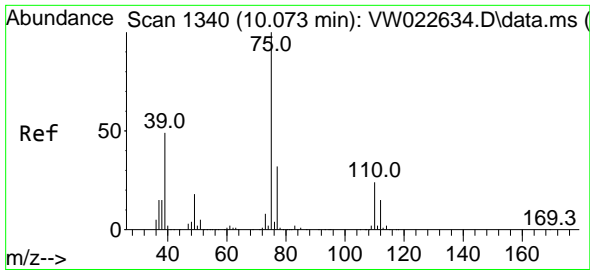
Tgt Ion: 63 Resp: 133439  
 Ion Ratio Lower Upper  
 63 100  
 112 4.8 3.8 5.6



#38  
 Bromodichloromethane  
 Concen: 24.042 ug/L  
 RT: 9.646 min Scan# 1270  
 Delta R.T. 0.000 min  
 Lab File: VW022652.D  
 Acq: 27 Apr 2022 19:08

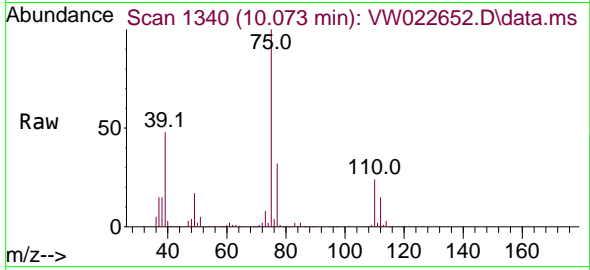
Tgt Ion: 83 Resp: 190453  
 Ion Ratio Lower Upper  
 83 100  
 85 64.1 45.2 84.0  
 127 9.1 6.0 9.0#



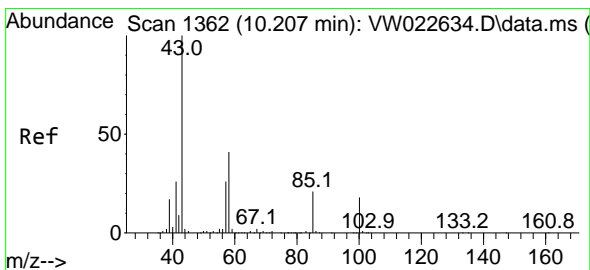
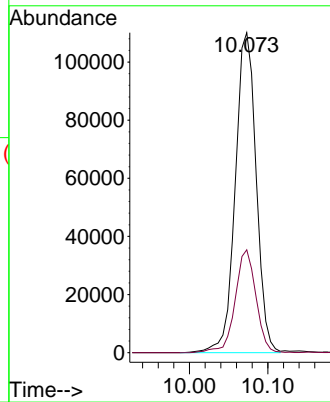
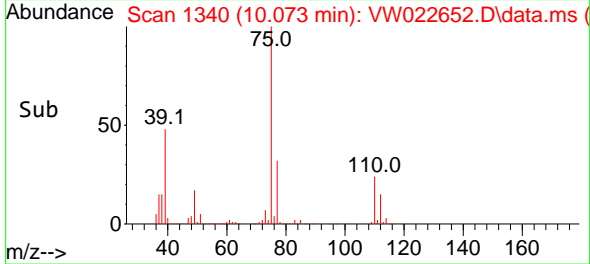


#39  
 cis-1,3-Dichloropropene  
 Concen: 23.308 ug/L  
 RT: 10.073 min Scan# 1340  
 Delta R.T. 0.000 min  
 Lab File: VW022652.D  
 Acq: 27 Apr 2022 19:08

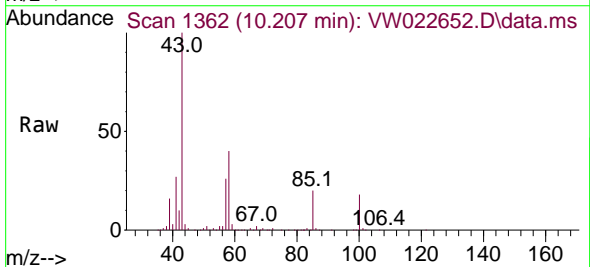
Instrument : MSVOA\_W  
 ClientSampleId : EW478MSD



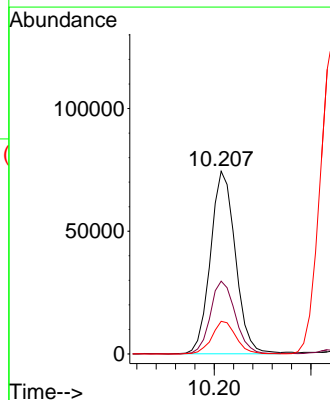
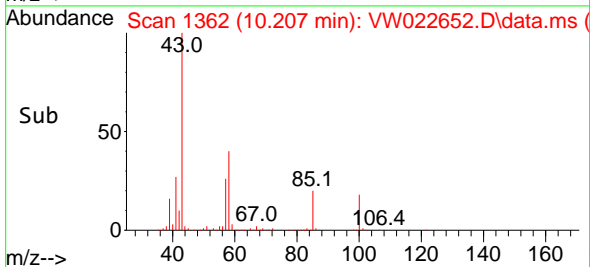
Tgt Ion: 75 Resp: 203742  
 Ion Ratio Lower Upper  
 75 100  
 77 32.1 22.6 42.0

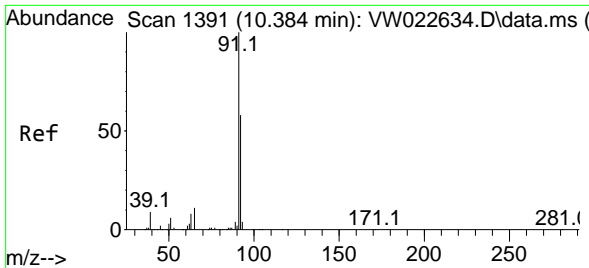


#40  
 4-Methyl-2-pentanone  
 Concen: 39.635 ug/L  
 RT: 10.207 min Scan# 1362  
 Delta R.T. 0.000 min  
 Lab File: VW022652.D  
 Acq: 27 Apr 2022 19:08



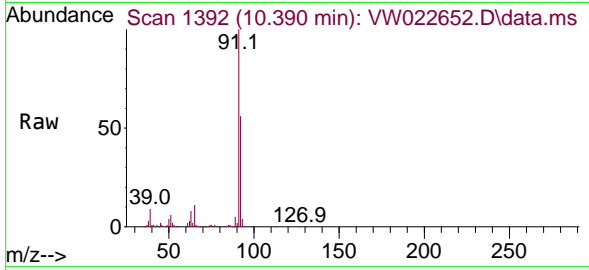
Tgt Ion: 43 Resp: 133247  
 Ion Ratio Lower Upper  
 43 100  
 58 39.7 29.3 43.9  
 100 17.3 12.2 18.4



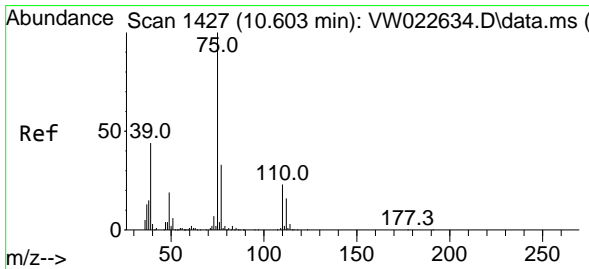
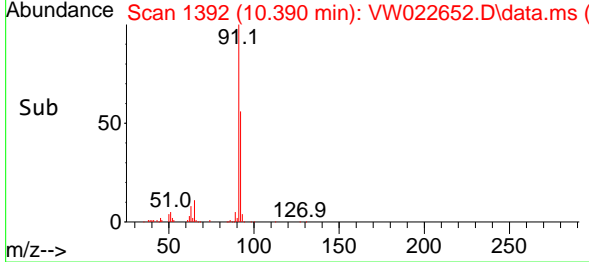
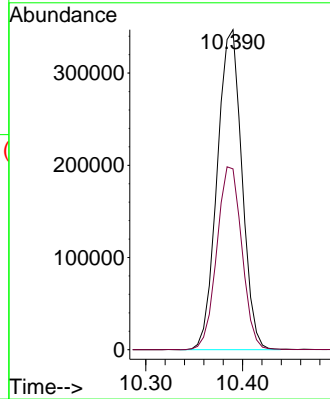


#42  
 Toluene  
 Concen: 23.356 ug/L  
 RT: 10.390 min Scan# 1392  
 Delta R.T. 0.006 min  
 Lab File: VW022652.D  
 Acq: 27 Apr 2022 19:08

Instrument : MSVOA\_W  
 ClientSampleId : EW478MSD

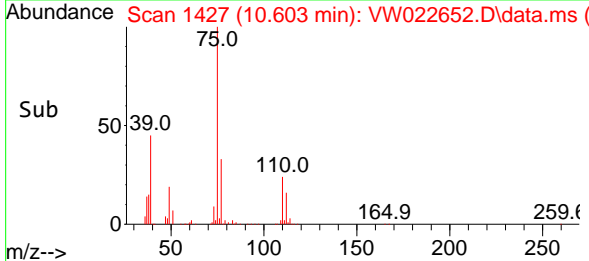
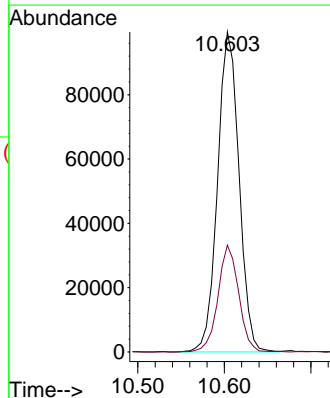
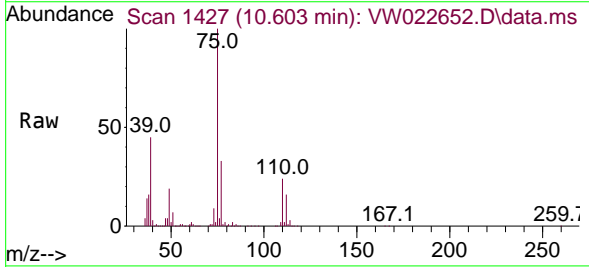


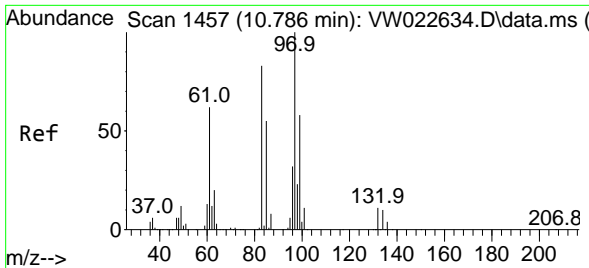
Tgt Ion: 91 Resp: 615400  
 Ion Ratio Lower Upper  
 91 100  
 92 56.5 38.0 70.6



#44  
 trans-1,3-Dichloropropene  
 Concen: 21.902 ug/L  
 RT: 10.603 min Scan# 1427  
 Delta R.T. 0.000 min  
 Lab File: VW022652.D  
 Acq: 27 Apr 2022 19:08

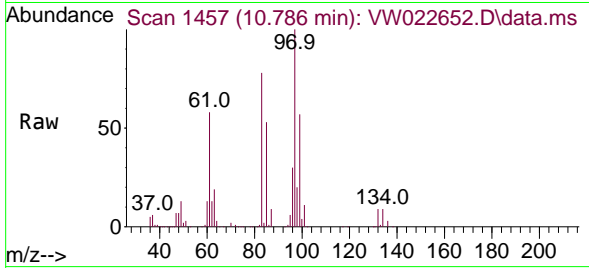
Tgt Ion: 75 Resp: 171424  
 Ion Ratio Lower Upper  
 75 100  
 77 33.4 21.3 39.6





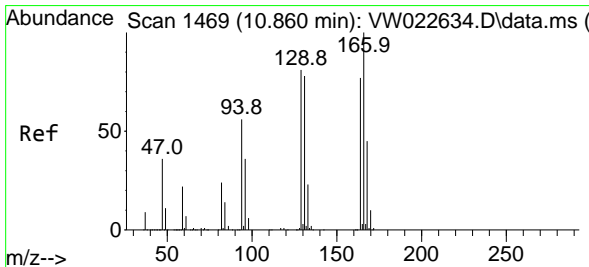
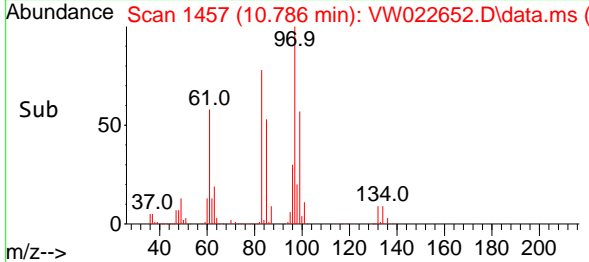
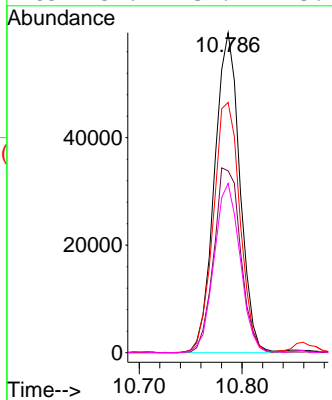
#45  
 1,1,2-Trichloroethane  
 Concen: 24.283 ug/L  
 RT: 10.786 min Scan# 14  
 Delta R.T. 0.000 min  
 Lab File: VW022652.D  
 Acq: 27 Apr 2022 19:08

Instrument : MSVOA\_W  
 ClientSampleId : EW478MSD

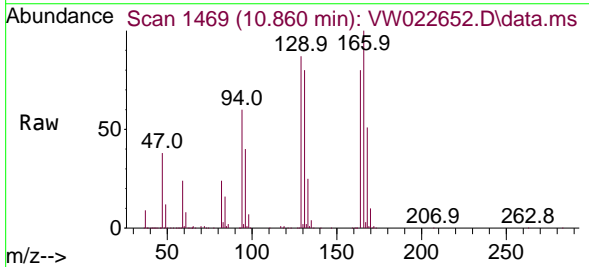


Tgt Ion: 97 Resp: 102090

Ion	Ratio	Lower	Upper
97	100		
99	56.9	46.0	85.4
83	78.2	60.6	112.6
85	52.9	39.7	73.7

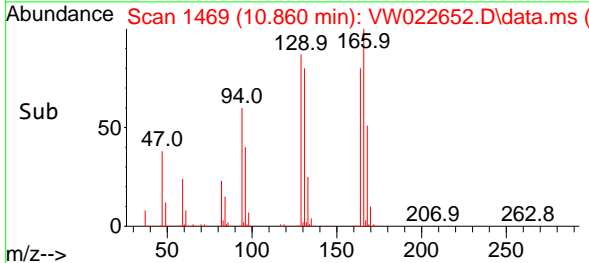
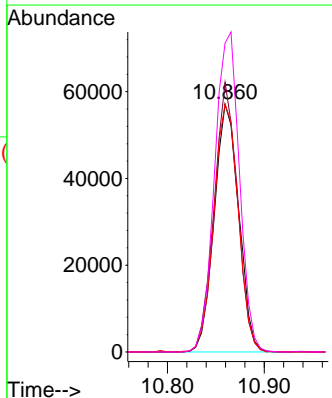


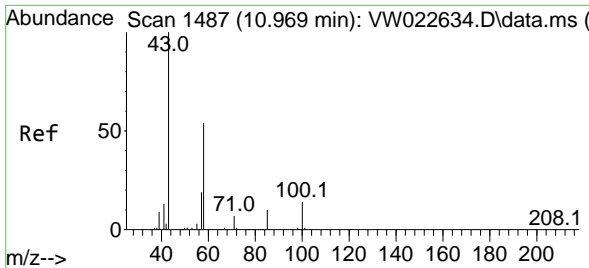
#46  
 Tetrachloroethene  
 Concen: 22.193 ug/L  
 RT: 10.860 min Scan# 1469  
 Delta R.T. 0.000 min  
 Lab File: VW022652.D  
 Acq: 27 Apr 2022 19:08



Tgt Ion: 164 Resp: 100438

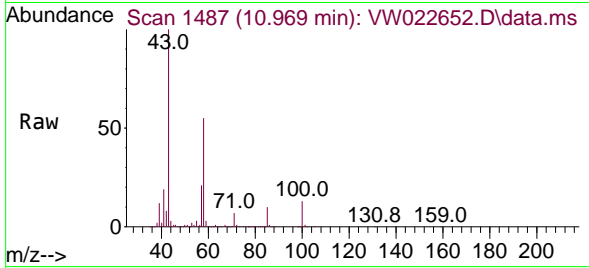
Ion	Ratio	Lower	Upper
164	100		
129	108.8	74.1	137.7
131	100.1	71.4	132.6
166	124.7	95.9	178.1





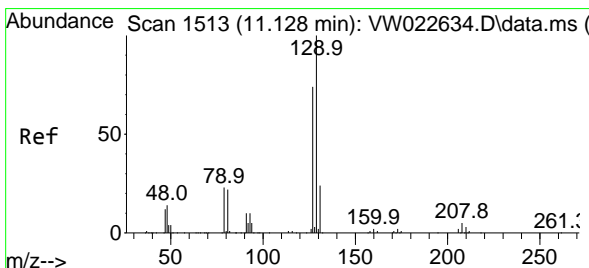
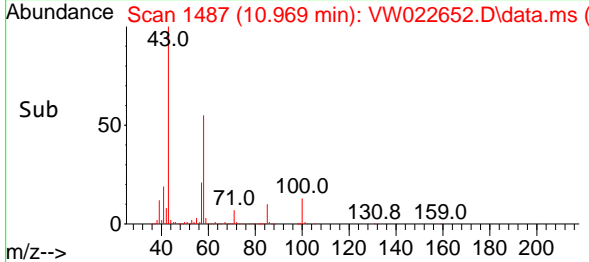
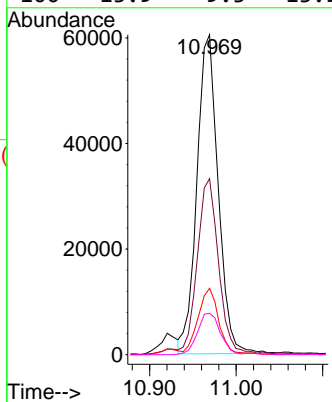
#48  
 2-Hexanone  
 Concen: 43.582 ug/L  
 RT: 10.969 min Scan# 1487  
 Delta R.T. 0.000 min  
 Lab File: VW022652.D  
 Acq: 27 Apr 2022 19:08

Instrument : MSVOA\_W  
 ClientSampleId : EW478MSD



Tgt Ion: 43 Resp: 103365

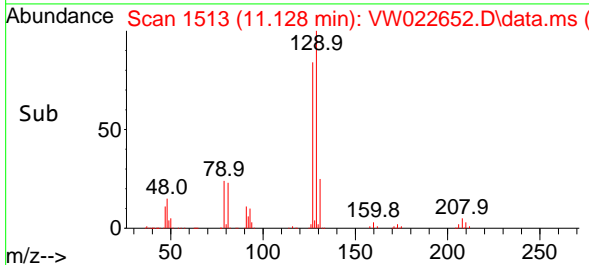
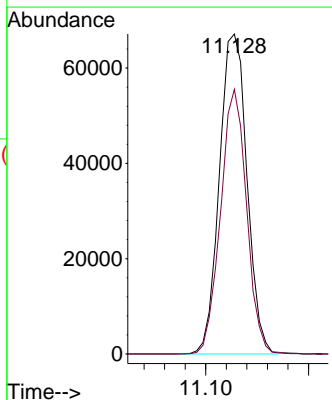
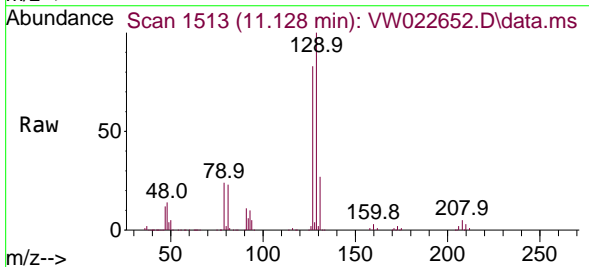
Ion	Ratio	Lower	Upper
43	100		
58	55.1	41.6	62.4
57	20.5	14.5	21.7
100	13.9	9.3	13.9

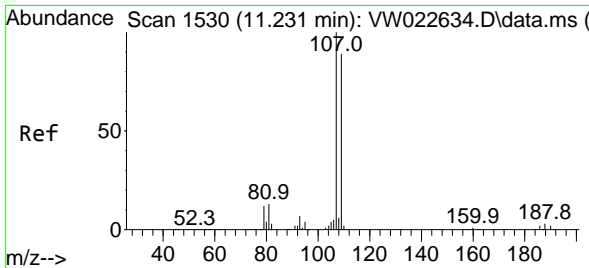


#49  
 Dibromochloromethane  
 Concen: 24.955 ug/L  
 RT: 11.128 min Scan# 1513  
 Delta R.T. 0.000 min  
 Lab File: VW022652.D  
 Acq: 27 Apr 2022 19:08

Tgt Ion: 129 Resp: 125123

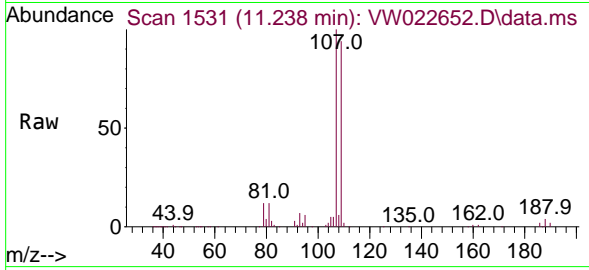
Ion	Ratio	Lower	Upper
129	100		
127	82.7	52.6	97.6



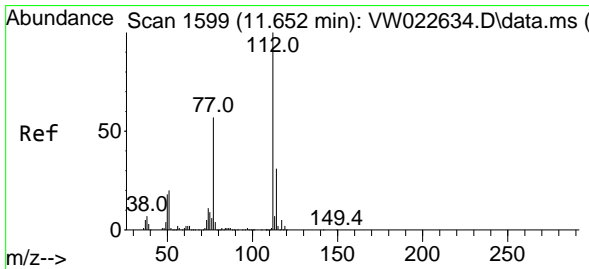
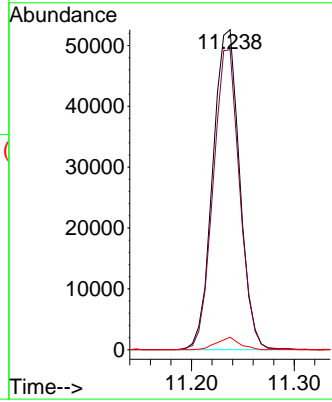
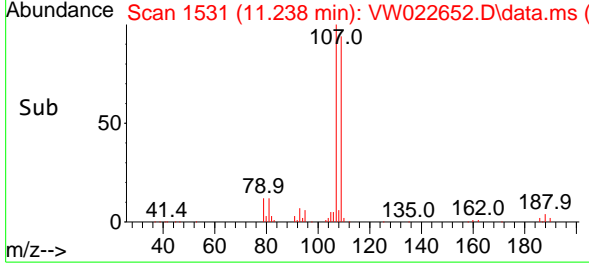


#50  
 1,2-Dibromoethane  
 Concen: 22.904 ug/L  
 RT: 11.238 min Scan# 11  
 Delta R.T. 0.006 min  
 Lab File: VW022652.D  
 Acq: 27 Apr 2022 19:08

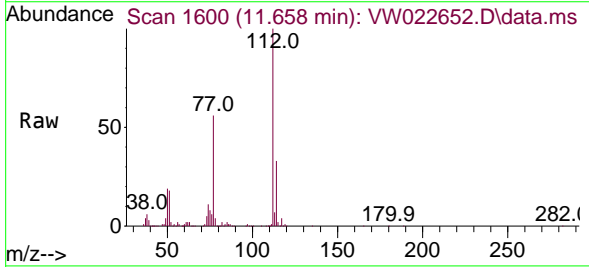
Instrument :  
 MSVOA\_W  
 ClientSampleId :  
 EW478MSD



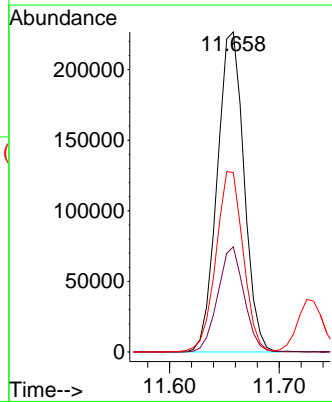
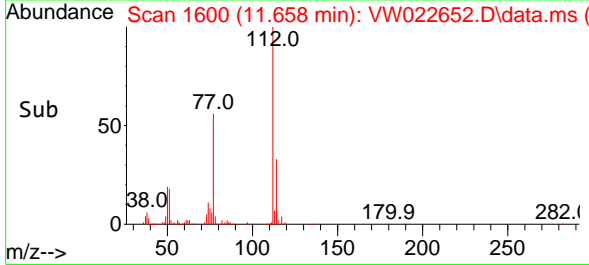
Tgt Ion:107 Resp: 95083  
 Ion Ratio Lower Upper  
 107 100  
 109 93.7 68.2 126.6  
 188 3.9 2.8 4.2

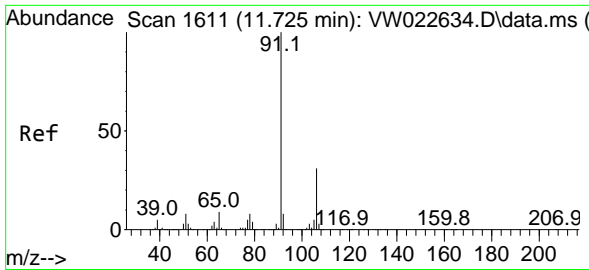


#51  
 Chlorobenzene  
 Concen: 23.954 ug/L  
 RT: 11.658 min Scan# 1600  
 Delta R.T. 0.006 min  
 Lab File: VW022652.D  
 Acq: 27 Apr 2022 19:08



Tgt Ion:112 Resp: 385704  
 Ion Ratio Lower Upper  
 112 100  
 114 32.8 20.5 38.1  
 77 56.1 48.1 72.1

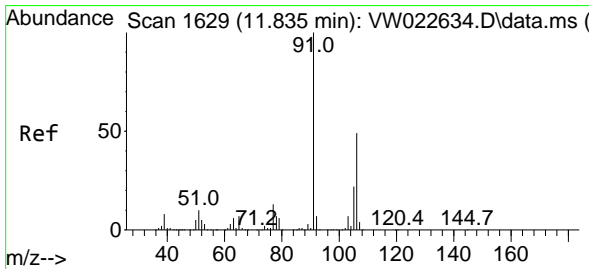
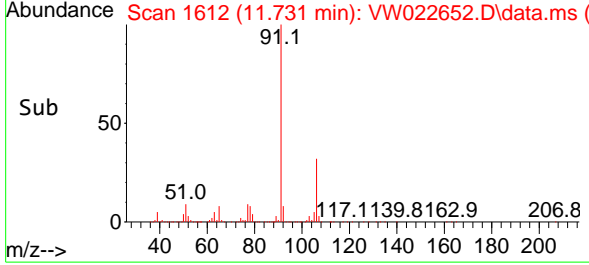
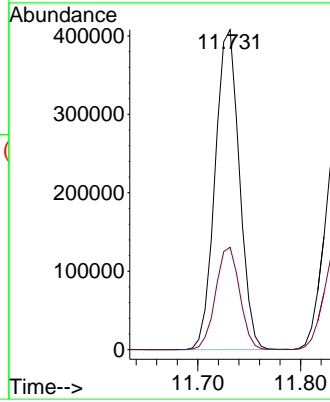
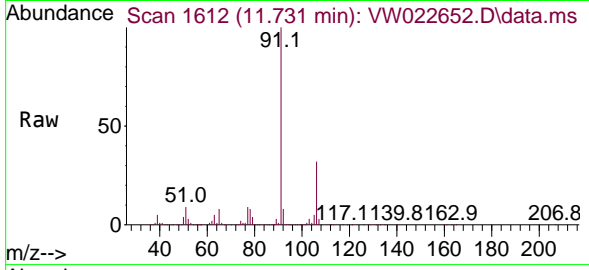




#52  
 Ethylbenzene  
 Concen: 22.630 ug/L  
 RT: 11.731 min Scan# 1612  
 Delta R.T. 0.006 min  
 Lab File: VW022652.D  
 Acq: 27 Apr 2022 19:08

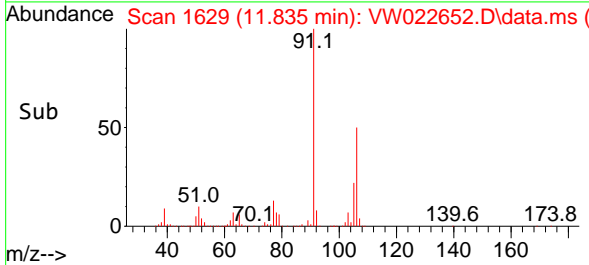
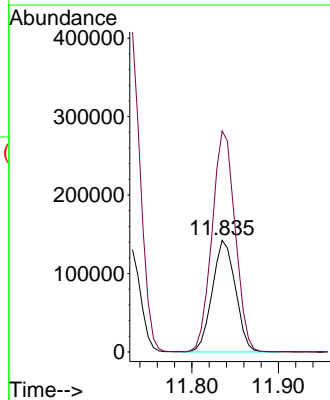
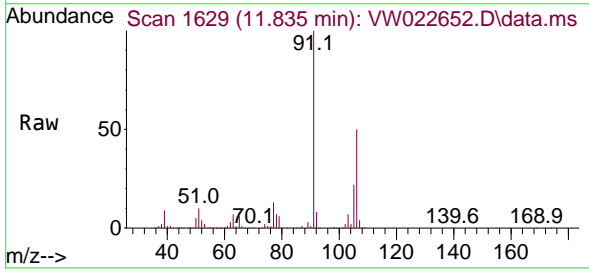
Instrument :  
 MSVOA\_W  
 ClientSampleId :  
 EW478MSD

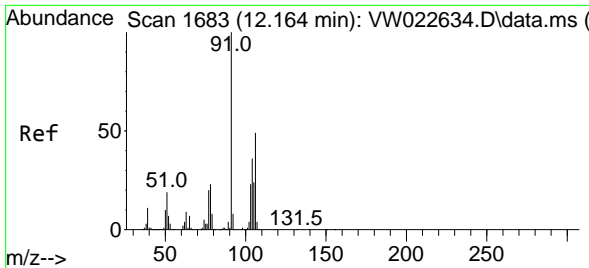
Tgt Ion: 91 Resp: 668370  
 Ion Ratio Lower Upper  
 91 100  
 106 32.0 20.5 38.1



#53  
 m,p-Xylene  
 Concen: 23.548 ug/L  
 RT: 11.835 min Scan# 1629  
 Delta R.T. 0.000 min  
 Lab File: VW022652.D  
 Acq: 27 Apr 2022 19:08

Tgt Ion: 106 Resp: 264441  
 Ion Ratio Lower Upper  
 106 100  
 91 198.1 149.9 278.5

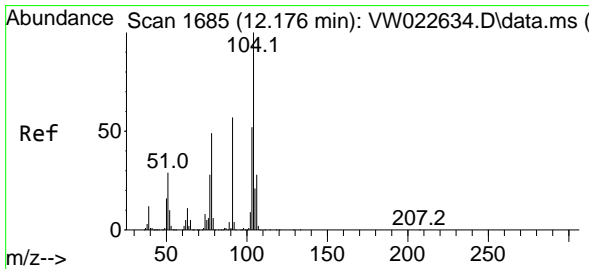
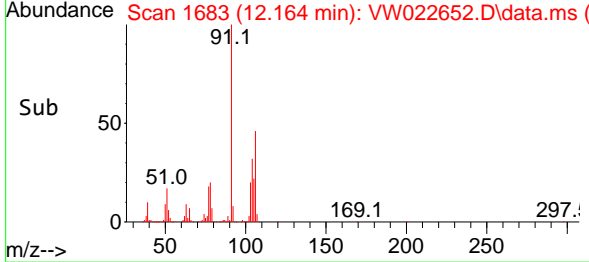
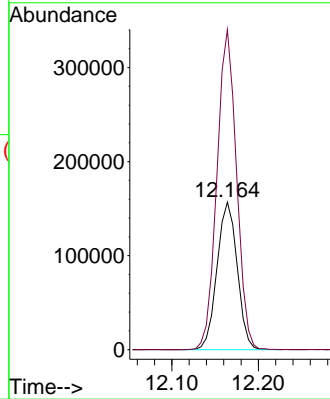
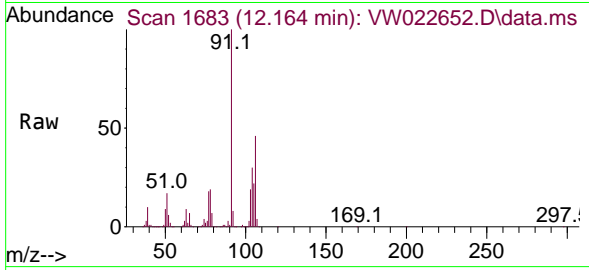




#54  
 o-Xylene  
 Concen: 23.663 ug/L  
 RT: 12.164 min Scan# 1  
 Delta R.T. 0.000 min  
 Lab File: VW022652.D  
 Acq: 27 Apr 2022 19:08

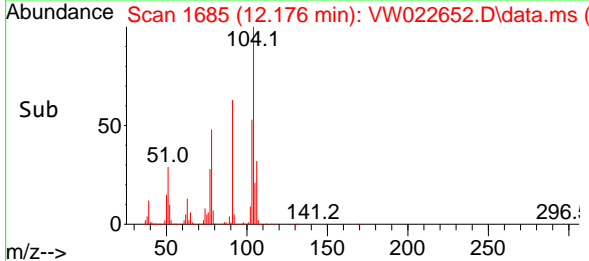
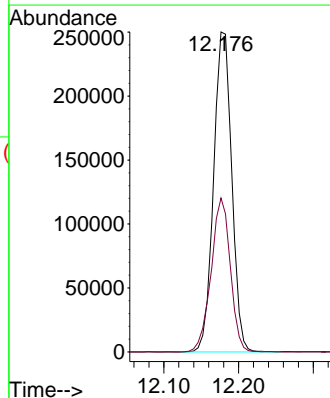
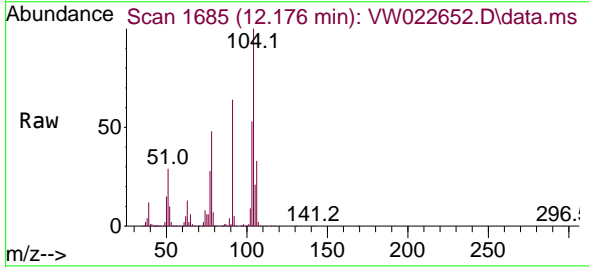
Instrument :  
 MSVOA\_W  
 ClientSampleId :  
 EW478MSD

Tgt Ion:106 Resp: 253933  
 Ion Ratio Lower Upper  
 106 100  
 91 216.9 155.3 288.3

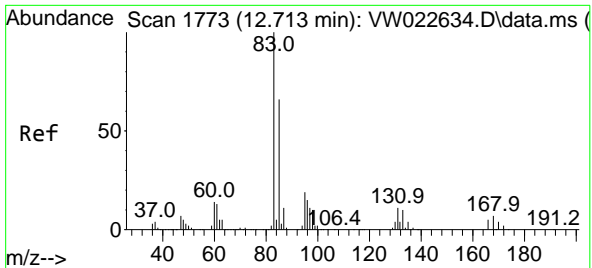


#55  
 Styrene  
 Concen: 23.036 ug/L  
 RT: 12.176 min Scan# 1685  
 Delta R.T. 0.000 min  
 Lab File: VW022652.D  
 Acq: 27 Apr 2022 19:08

Tgt Ion:104 Resp: 422355  
 Ion Ratio Lower Upper  
 104 100  
 78 48.1 34.4 64.0

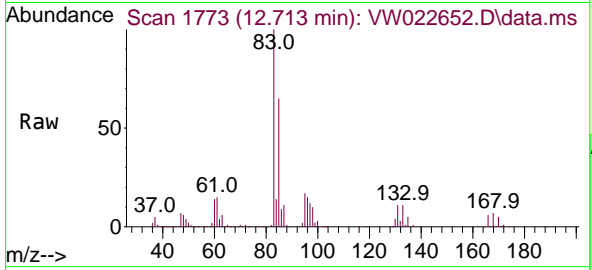






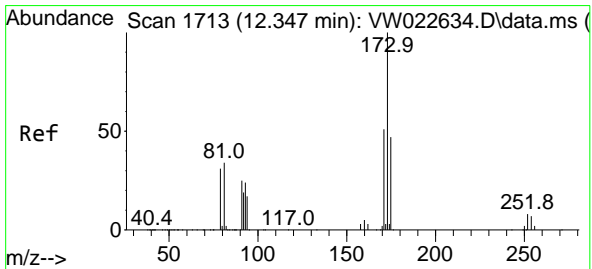
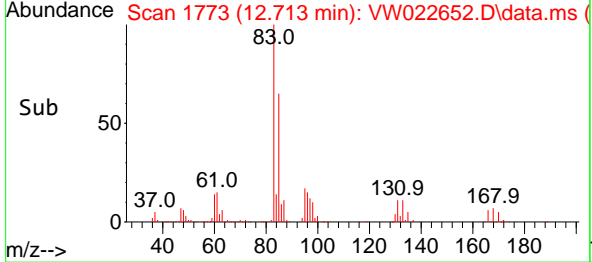
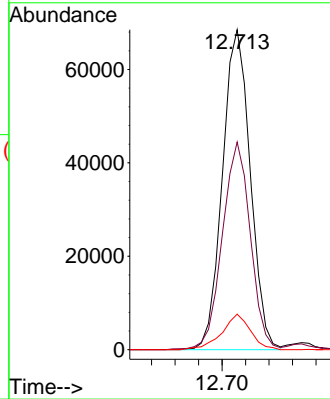
#57  
 1,1,2,2-Tetrachloroethane  
 Concen: 21.836 ug/L  
 RT: 12.713 min Scan# 1773  
 Delta R.T. 0.000 min  
 Lab File: VW022652.D  
 Acq: 27 Apr 2022 19:08

Instrument : MSVOA\_W  
 ClientSampleId : EW478MSD

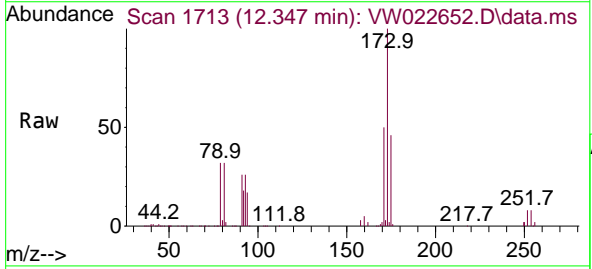


Tgt Ion: 83 Resp: 112677

Ion	Ratio	Lower	Upper
83	100		
85	64.9	45.5	84.5
131	11.1	7.8	11.8

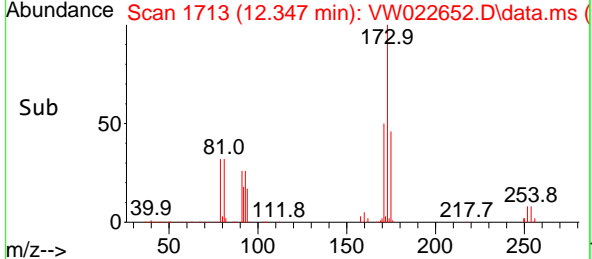
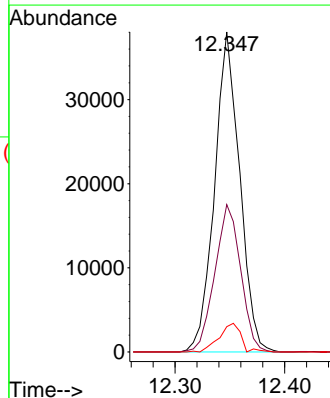


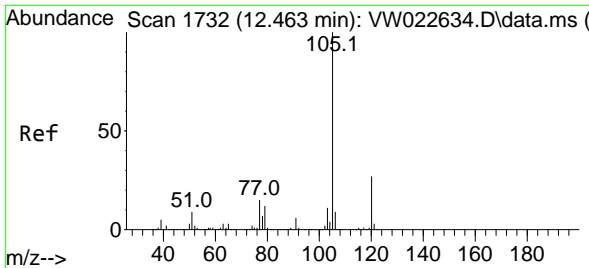
#59  
 Bromoform  
 Concen: 25.475 ug/L  
 RT: 12.347 min Scan# 1713  
 Delta R.T. 0.000 min  
 Lab File: VW022652.D  
 Acq: 27 Apr 2022 19:08



Tgt Ion: 173 Resp: 60532

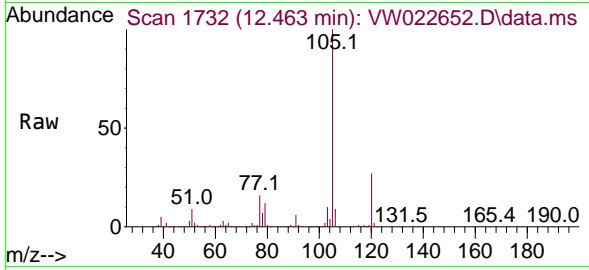
Ion	Ratio	Lower	Upper
173	100		
175	47.3	39.2	58.8
254	7.4	6.6	9.8





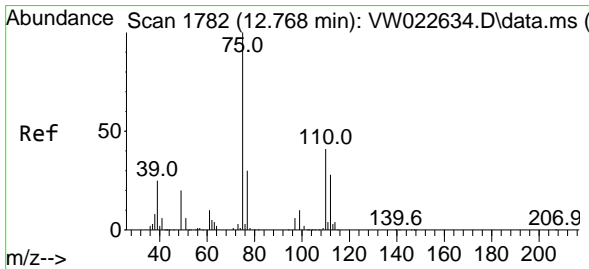
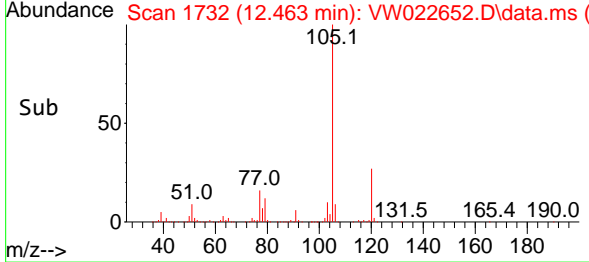
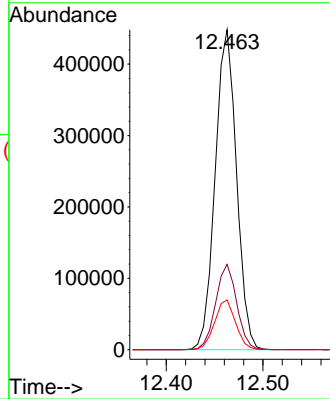
#60  
 Isopropylbenzene  
 Concen: 25.814 ug/L  
 RT: 12.463 min Scan# 1732  
 Delta R.T. 0.000 min  
 Lab File: VW022652.D  
 Acq: 27 Apr 2022 19:08

Instrument : MSVOA\_W  
 ClientSampleId : EW478MSD

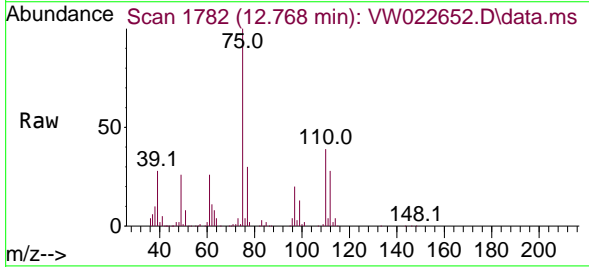


Tgt Ion:105 Resp: 685689

Ion	Ratio	Lower	Upper
105	100		
120	26.4	20.9	31.3
77	15.4	13.7	20.5

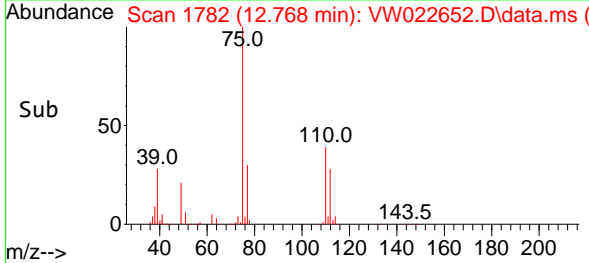
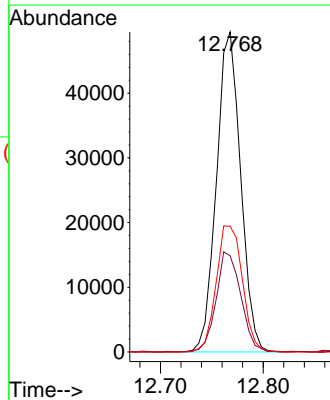


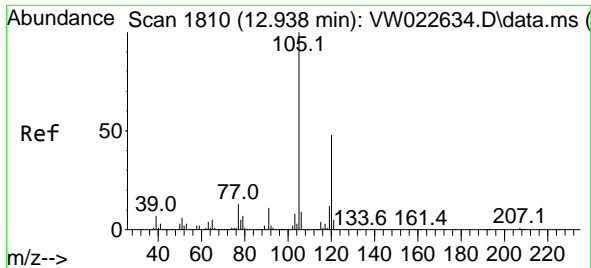
#61  
 1,2,3-Trichloropropane  
 Concen: 23.734 ug/L  
 RT: 12.768 min Scan# 1782  
 Delta R.T. 0.000 min  
 Lab File: VW022652.D  
 Acq: 27 Apr 2022 19:08



Tgt Ion: 75 Resp: 80733

Ion	Ratio	Lower	Upper
75	100		
77	31.6	25.7	38.5
110	42.7	31.8	47.6

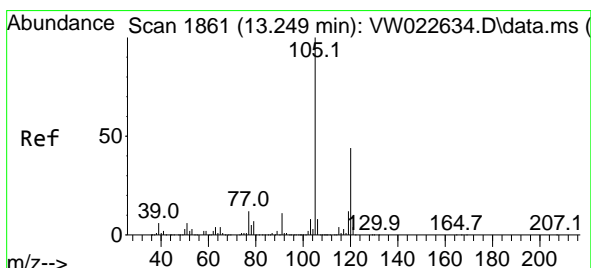
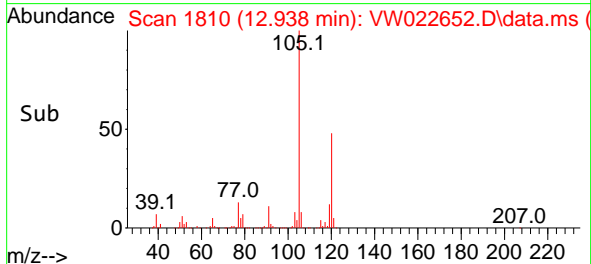
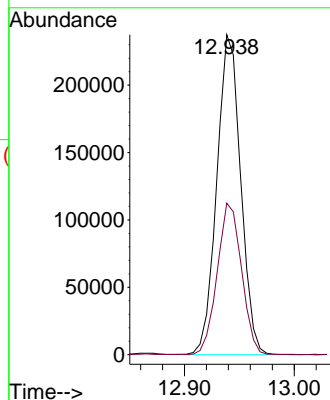
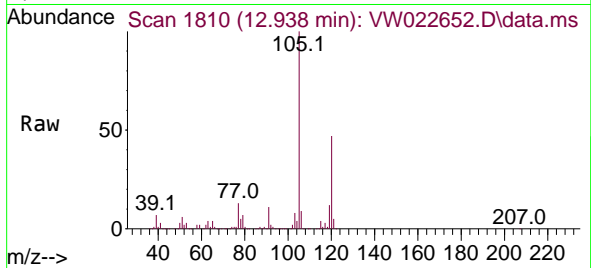




#62  
 1,3,5-Trimethylbenzene  
 Concen: 24.629 ug/L  
 RT: 12.938 min Scan# 1810  
 Delta R.T. 0.000 min  
 Lab File: VW022652.D  
 Acq: 27 Apr 2022 19:08

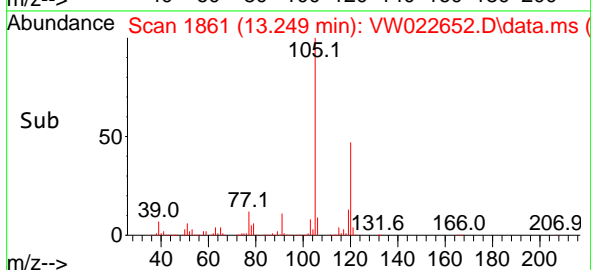
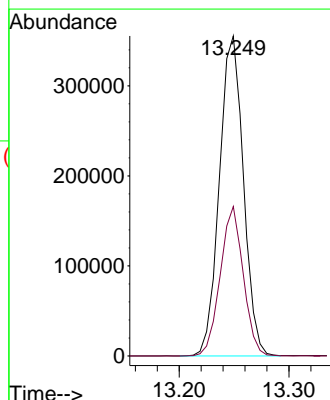
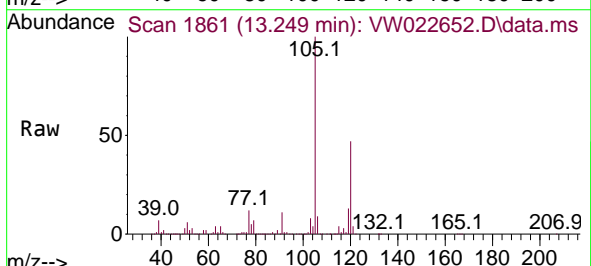
Instrument :  
 MSVOA\_W  
 ClientSampleId :  
 EW478MSD

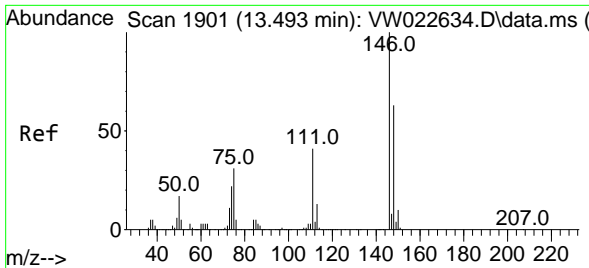
Tgt Ion:105 Resp: 359795  
 Ion Ratio Lower Upper  
 105 100  
 120 48.2 37.5 56.3



#63  
 1,2,4-Trimethylbenzene  
 Concen: 24.373 ug/L  
 RT: 13.249 min Scan# 1861  
 Delta R.T. 0.000 min  
 Lab File: VW022652.D  
 Acq: 27 Apr 2022 19:08

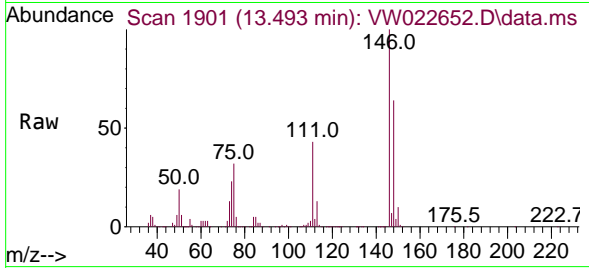
Tgt Ion:105 Resp: 541425  
 Ion Ratio Lower Upper  
 105 100  
 120 44.7 34.2 51.2



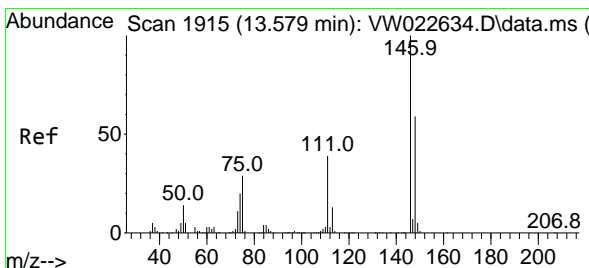
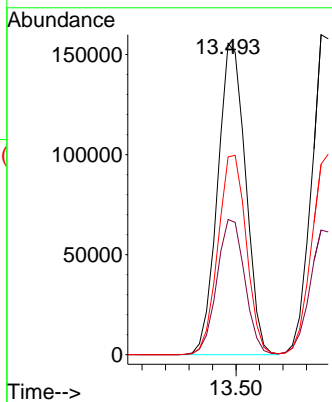
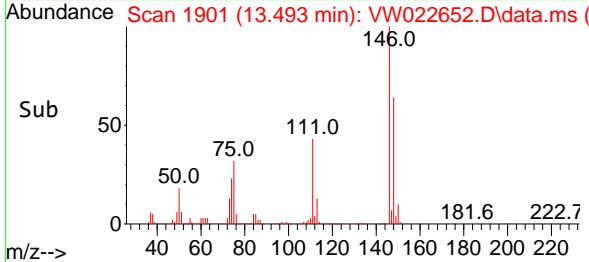


#64  
 1,3-Dichlorobenzene  
 Concen: 23.904 ug/L  
 RT: 13.493 min Scan# 1901  
 Delta R.T. 0.000 min  
 Lab File: VW022652.D  
 Acq: 27 Apr 2022 19:08

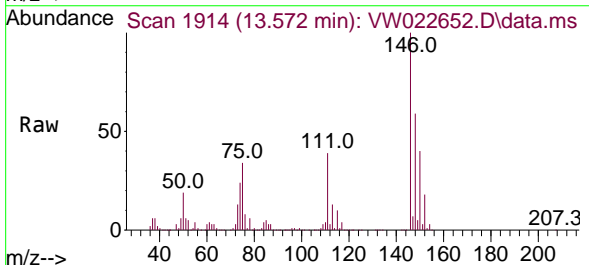
Instrument : MSVOA\_W  
 ClientSampleId : EW478MSD



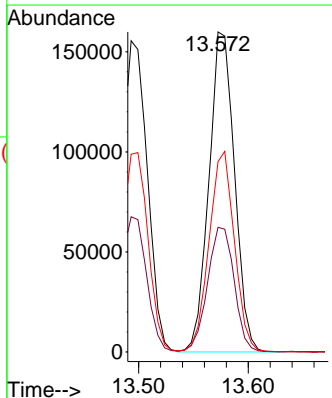
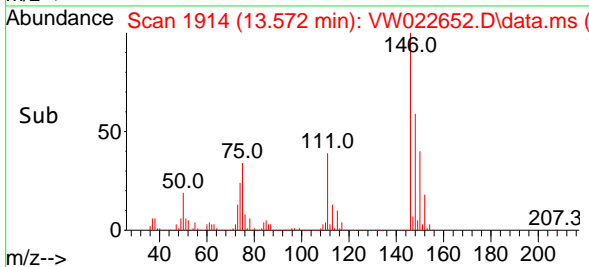
Tgt Ion:146 Resp: 257697  
 Ion Ratio Lower Upper  
 146 100  
 111 43.4 28.2 52.4  
 148 63.5 41.9 77.7

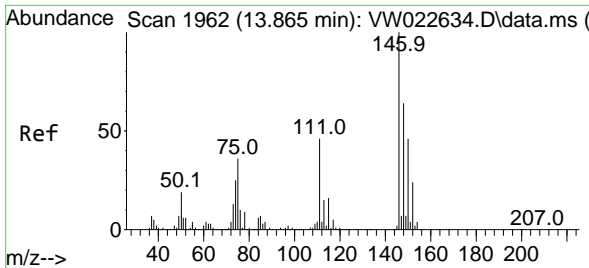


#65  
 1,4-Dichlorobenzene  
 Concen: 24.185 ug/L  
 RT: 13.572 min Scan# 1914  
 Delta R.T. -0.006 min  
 Lab File: VW022652.D  
 Acq: 27 Apr 2022 19:08



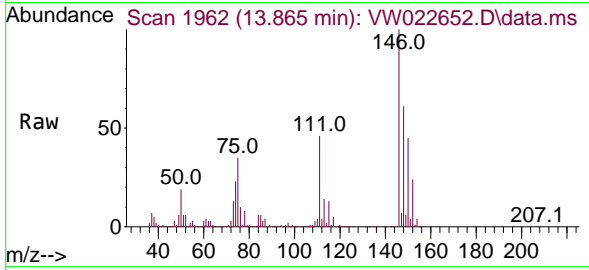
Tgt Ion:146 Resp: 260023  
 Ion Ratio Lower Upper  
 146 100  
 111 39.0 28.5 52.9  
 148 59.5 44.4 82.4



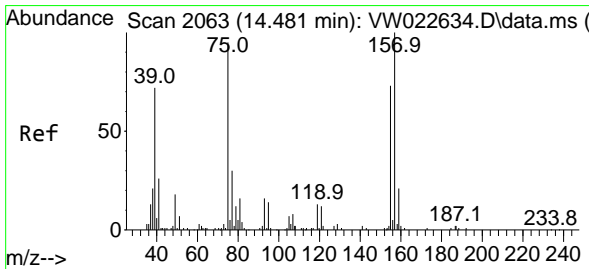
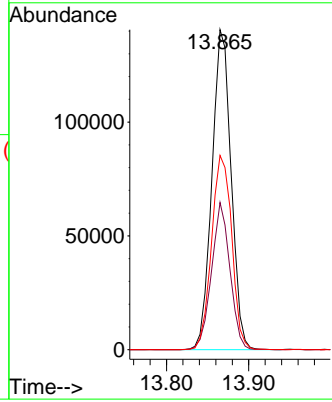
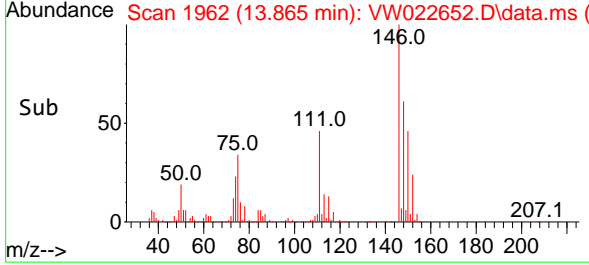


#67  
 1,2-Dichlorobenzene  
 Concen: 23.605 ug/L  
 RT: 13.865 min Scan# 1962  
 Delta R.T. 0.000 min  
 Lab File: VW022652.D  
 Acq: 27 Apr 2022 19:08

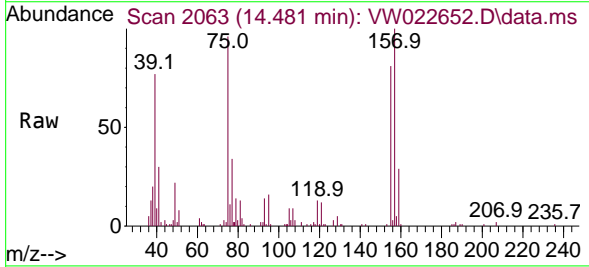
Instrument : MSVOA\_W  
 ClientSampleId : EW478MSD



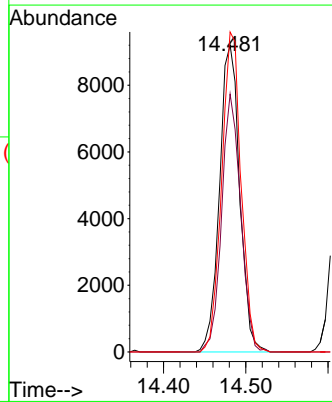
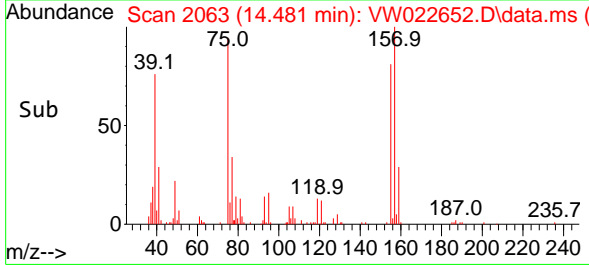
Tgt Ion:146 Resp: 227583  
 Ion Ratio Lower Upper  
 146 100  
 111 46.0 39.0 58.4  
 148 60.7 52.1 78.1

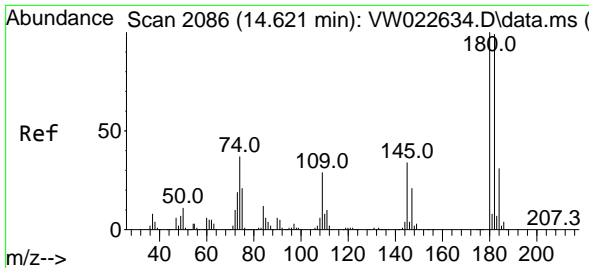


#68  
 1,2-Dibromo-3-chloropropane  
 Concen: 19.894 ug/L  
 RT: 14.481 min Scan# 2063  
 Delta R.T. 0.000 min  
 Lab File: VW022652.D  
 Acq: 27 Apr 2022 19:08



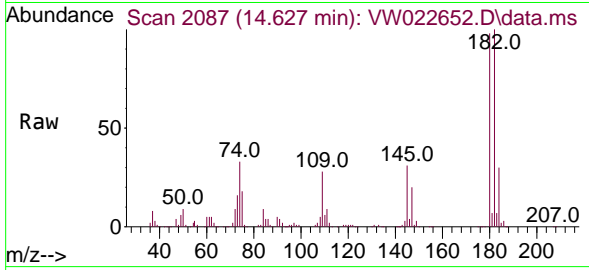
Tgt Ion: 75 Resp: 15694  
 Ion Ratio Lower Upper  
 75 100  
 155 84.1 55.6 83.4#  
 157 104.3 69.8 104.6



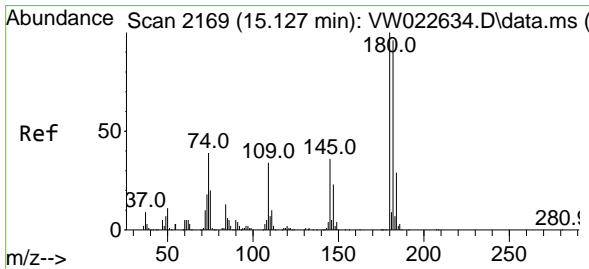
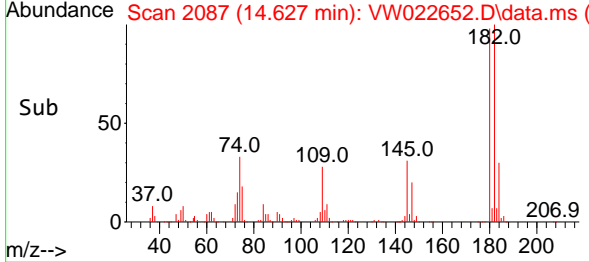
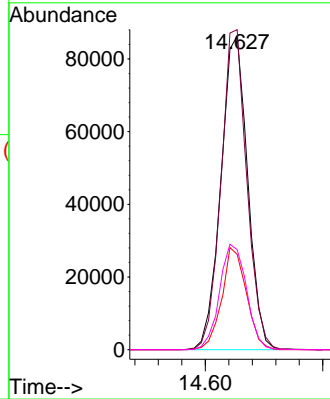


#69  
 1,3,5-Trichlorobenzene  
 Concen: 19.342 ug/L  
 RT: 14.627 min Scan# 2087  
 Delta R.T. 0.006 min  
 Lab File: VW022652.D  
 Acq: 27 Apr 2022 19:08

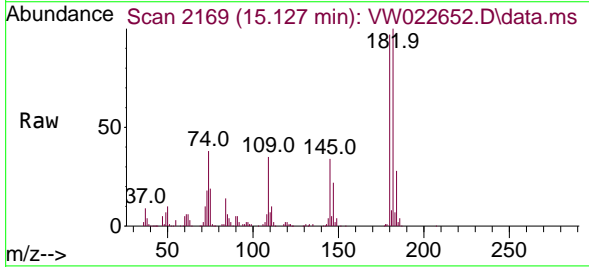
Instrument : MSVOA\_W  
 ClientSampleId : EW478MSD



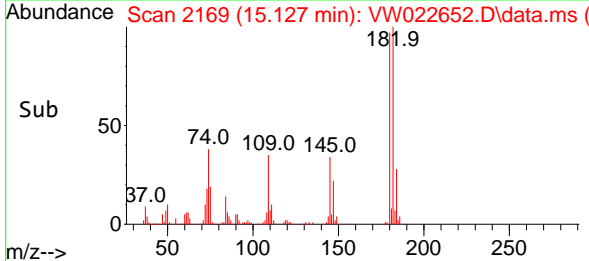
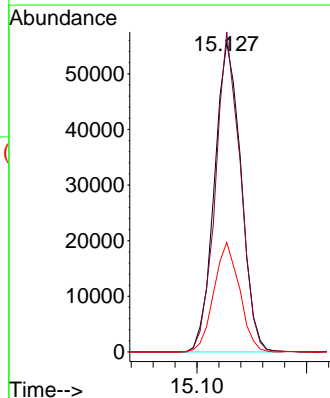
Tgt Ion:180 Resp: 136047  
 Ion Ratio Lower Upper  
 180 100  
 182 98.5 79.1 118.7  
 184 30.0 24.5 36.7  
 145 34.0 27.0 40.4

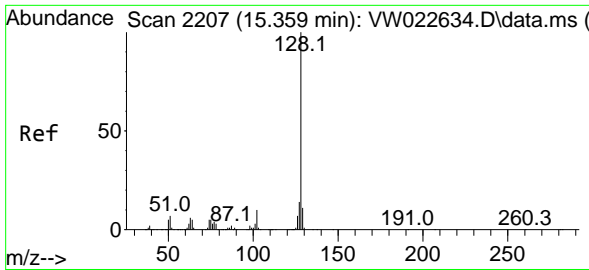


#70  
 1,2,4-trichlorobenzene  
 Concen: 15.859 ug/L  
 RT: 15.127 min Scan# 2169  
 Delta R.T. 0.000 min  
 Lab File: VW022652.D  
 Acq: 27 Apr 2022 19:08



Tgt Ion:180 Resp: 93684  
 Ion Ratio Lower Upper  
 180 100  
 182 96.7 72.8 109.2  
 145 34.1 25.5 38.3



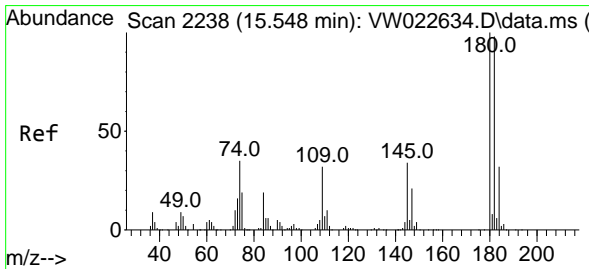
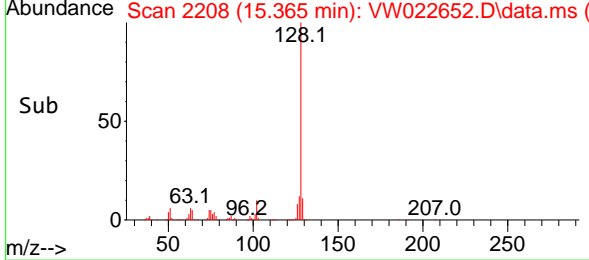
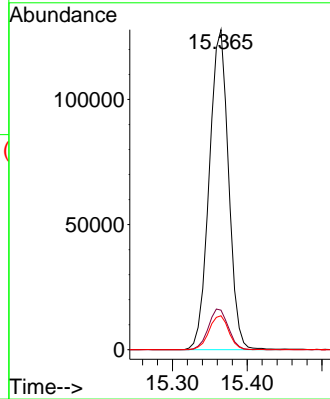
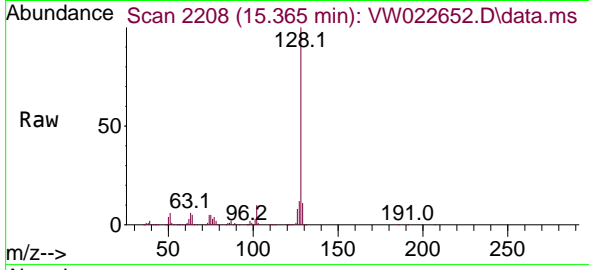


#71  
 Naphthalene  
 Concen: 18.384 ug/L  
 RT: 15.365 min Scan# 2208  
 Delta R.T. 0.006 min  
 Lab File: VW022652.D  
 Acq: 27 Apr 2022 19:08

Instrument : MSVOA\_W  
 ClientSampleId : EW478MSD

Tgt Ion:128 Resp: 229049

Ion	Ratio	Lower	Upper
128	100		
127	13.1	10.6	15.8
129	10.8	8.5	12.7



#72  
 1,2,3-Trichlorobenzene  
 Concen: 15.417 ug/L  
 RT: 15.554 min Scan# 2239  
 Delta R.T. 0.006 min  
 Lab File: VW022652.D  
 Acq: 27 Apr 2022 19:08

Tgt Ion:180 Resp: 77844

Ion	Ratio	Lower	Upper
180	100		
182	94.8	73.4	110.0
145	35.4	27.0	40.6

