

Data Path : Z:\voasrv\HPCHEM1\MSVOA_W\Data\VW042821\
 Data File : VW018830.D
 Acq On : 28 Apr 2021 19:07
 Operator : SY/VA
 Sample : M2177-18
 Misc : 5.82G/10ML/MSVOA_W/SOIL
 ALS Vial : 18 Sample Multiplier: 1

Instrument :
 MSVOA_W
 ClientSampled :

Quant Time: Apr 29 00:17:39 2021
 Quant Method : Z:\voasrv\HPCHEM1\MSVOA_W\Method\SFAMWLM041421SMA.M
 Quant Title : SFAM01.0
 QLast Update : Thu Apr 29 00:13:39 2021
 Response via : Initial Calibration

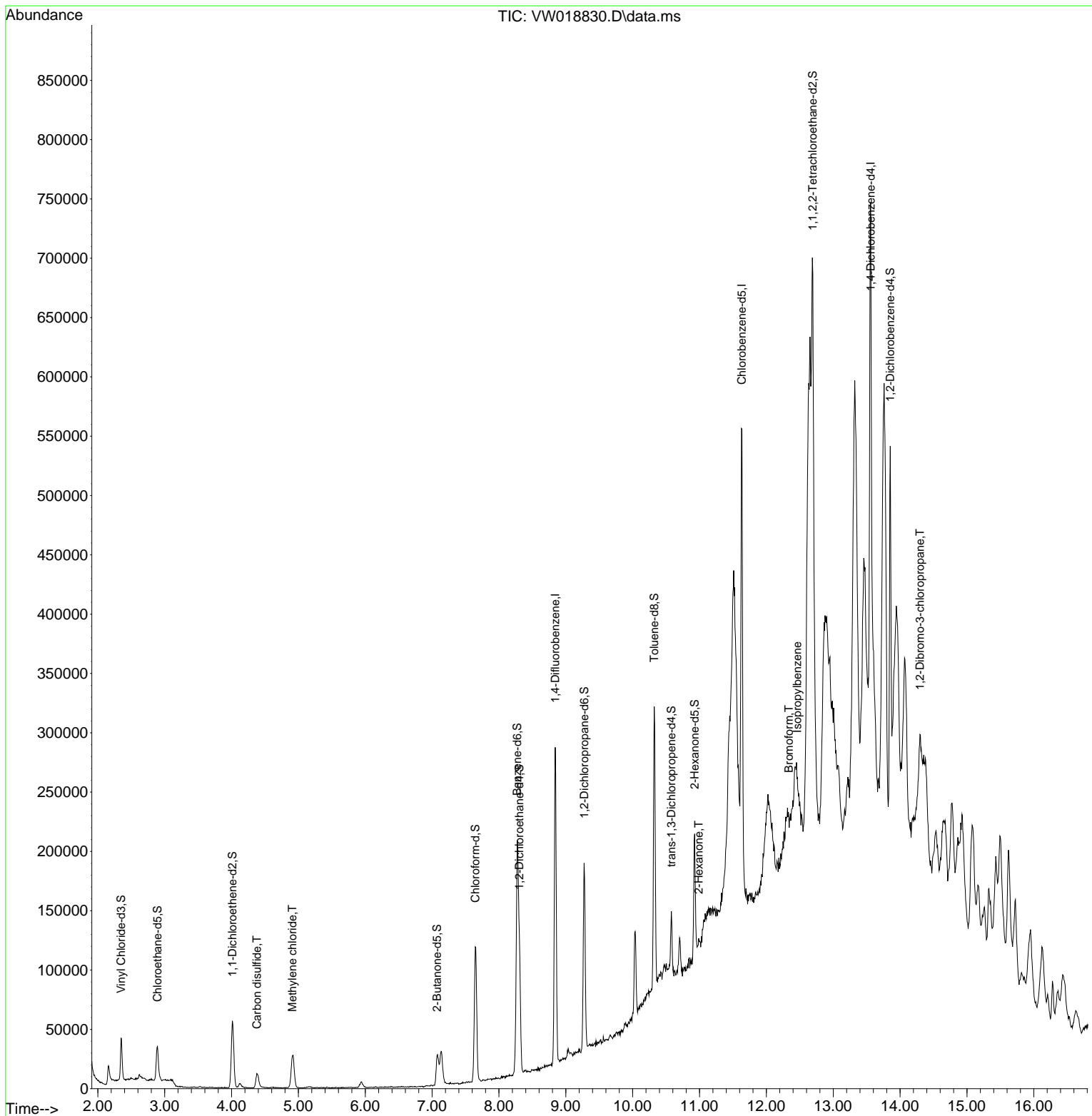
Compound	R.T.	QIon	Response	Conc	Units	Dev(Min)
Internal Standards						
1) 1,4-Difluorobenzene	8.841	114	220418	25.00	ug/L	0.00
28) Chlorobenzene-d5	11.634	117	204076	25.00	ug/L	0.00
58) 1,4-Dichlorobenzene-d4	13.560	152	98359	25.00	ug/L	0.00
System Monitoring Compounds						
4) Vinyl Chloride-d3	2.349	65	36737	10.97	ug/L	0.00
Spiked Amount	25.000	Range 30 - 150	Recovery =	43.88%		
7) Chloroethane-d5	2.891	69	35613	12.00	ug/L	0.00
Spiked Amount	25.000	Range 30 - 150	Recovery =	48.00%		
11) 1,1-Dichloroethene-d2	4.013	63	52321	8.99	ug/L	-0.01
Spiked Amount	25.000	Range 45 - 110	Recovery =	35.96%#		
21) 2-Butanone-d5	7.073	46	45480	59.65	ug/L	-0.01
Spiked Amount	50.000	Range 20 - 135	Recovery =	119.30%		
24) Chloroform-d	7.647	84	117602	19.44	ug/L	0.00
Spiked Amount	25.000	Range 40 - 150	Recovery =	77.76%		
26) 1,2-Dichloroethane-d4	8.305	65	73637	21.65	ug/L	0.00
Spiked Amount	25.000	Range 70 - 130	Recovery =	86.60%		
32) Benzene-d6	8.274	84	193245	16.14	ug/L	0.00
Spiked Amount	25.000	Range 20 - 135	Recovery =	64.56%		
36) 1,2-Dichloropropane-d6	9.274	67	72195	20.01	ug/L	0.00
Spiked Amount	25.000	Range 70 - 120	Recovery =	80.04%		
41) Toluene-d8	10.323	98	162119	14.81	ug/L	0.00
Spiked Amount	25.000	Range 30 - 130	Recovery =	59.24%		
43) trans-1,3-Dichloroprop...	10.579	79	27463	17.88	ug/L	0.00
Spiked Amount	25.000	Range 30 - 135	Recovery =	71.52%		
47) 2-Hexanone-d5	10.926	63	37785	60.23	ug/L	0.00
Spiked Amount	50.000	Range 20 - 135	Recovery =	120.46%		
56) 1,1,2,2-Tetrachloroeth...	12.694	84	82108	27.25	ug/L	0.00
Spiked Amount	25.000	Range 45 - 120	Recovery =	109.00%		
66) 1,2-Dichlorobenzene-d4	13.853	152	81876	23.70	ug/L	0.00
Spiked Amount	25.000	Range 75 - 120	Recovery =	94.80%		
Target Compounds						
14) Carbon disulfide	4.379	76	8671	1.01	ug/L	97
16) Methylene chloride	4.909	84	22638	6.27	ug/L	92
48) 2-Hexanone	10.987	43	1077	0.85	ug/L #	45
59) Bromoform	12.335	173	2289	1.63	ug/L #	71
60) Isopropylbenzene	12.463	105	5430	0.38	ug/L #	59
68) 1,2-Dibromo-3-chloropr...	14.298	75	3454	7.40	ug/L #	1

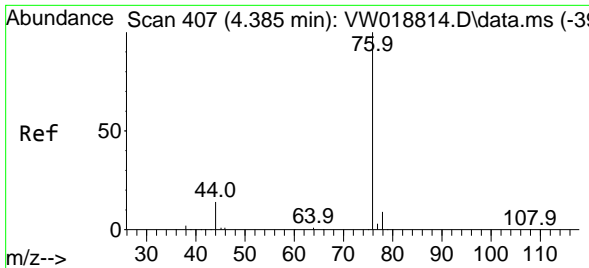
(#) = qualifier out of range (m) = manual integration (+) = signals summed

Data Path : Z:\voasrv\HPCHEM1\MSVOA_W\Data\VW042821\
 Data File : VW018830.D
 Acq On : 28 Apr 2021 19:07
 Operator : SY/VA
 Sample : M2177-18
 Misc : 5.82G/10ML/MSVOA_W/SOIL
 ALS Vial : 18 Sample Multiplier: 1

Instrument :
 MSVOA_W
 ClientSampled :

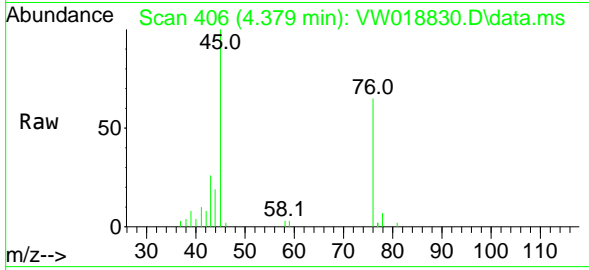
Quant Time: Apr 29 00:17:39 2021
 Quant Method : Z:\voasrv\HPCHEM1\MSVOA_W\Method\SFAMWLM041421SMA.M
 Quant Title : SFAM01.0
 QLast Update : Thu Apr 29 00:13:39 2021
 Response via : Initial Calibration



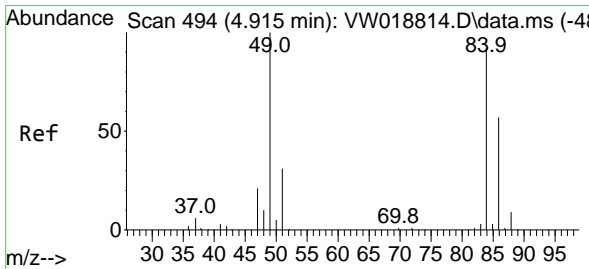
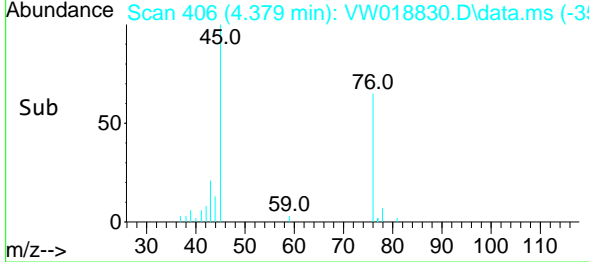
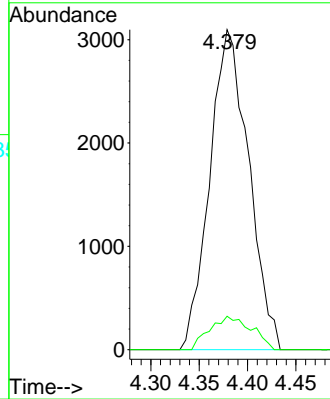


#14
 Carbon disulfide
 Concen: 1.01 ug/L
 RT: 4.379 min Scan# 406
 Delta R.T. -0.006 min
 Lab File: VW018830.D
 Acq: 28 Apr 2021 19:07

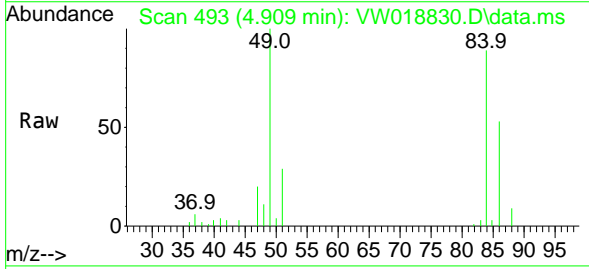
Instrument :
 MSVOA_W
 ClientSampled :



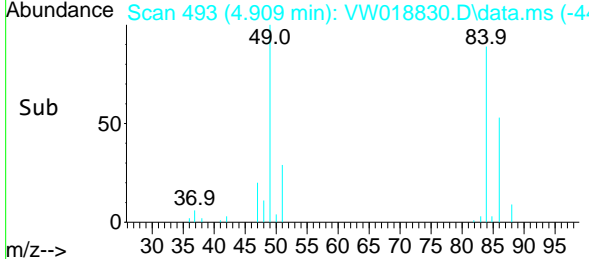
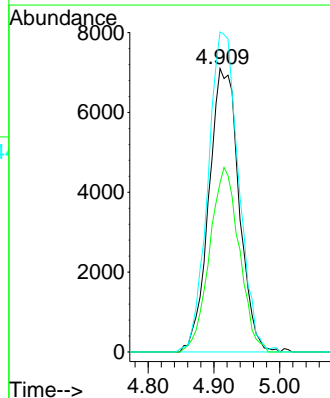
Tgt Ion: 76 Resp: 8671
 Ion Ratio Lower Upper
 76 100
 78 10.4 7.4 11.0

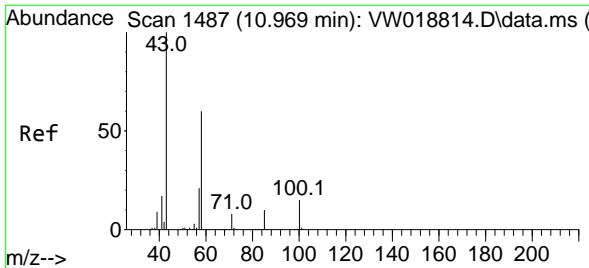


#16
 Methylene chloride
 Concen: 6.27 ug/L
 RT: 4.909 min Scan# 493
 Delta R.T. -0.006 min
 Lab File: VW018830.D
 Acq: 28 Apr 2021 19:07



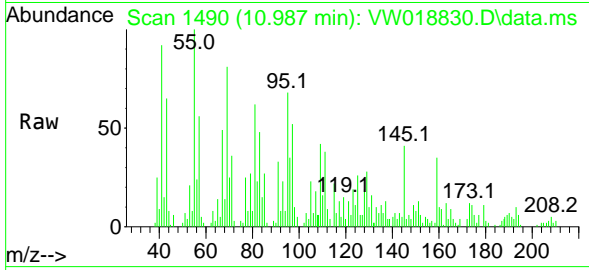
Tgt Ion: 84 Resp: 22638
 Ion Ratio Lower Upper
 84 100
 86 59.7 45.3 84.1
 49 112.9 86.6 160.8





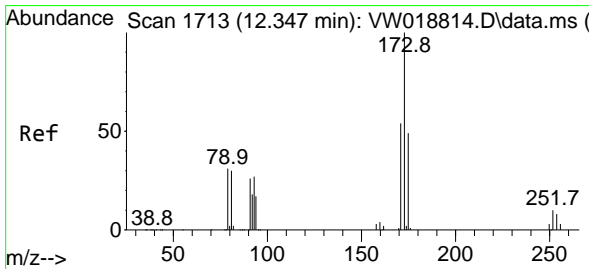
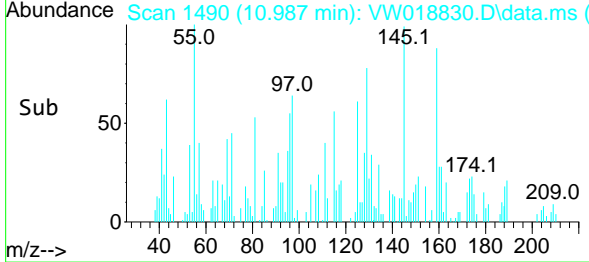
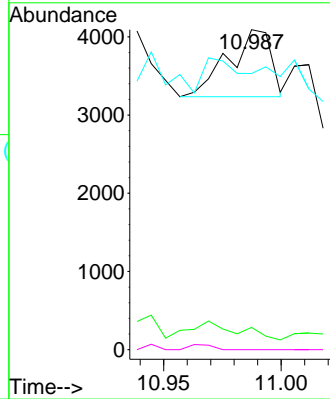
#48
 2-Hexanone
 Concen: 0.85 ug/L
 RT: 10.987 min Scan# 1490
 Delta R.T. 0.018 min
 Lab File: VW018830.D
 Acq: 28 Apr 2021 19:07

Instrument :
 MSVOA_W
 ClientSampled :

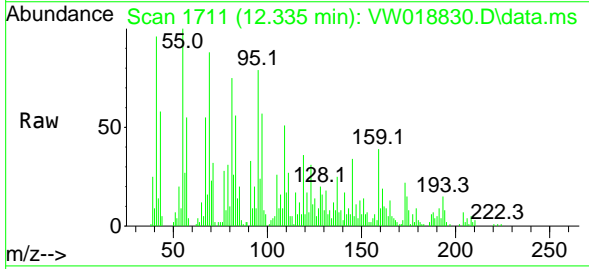


Tgt Ion: 43 Resp: 1077

Ion	Ratio	Lower	Upper
43	100		
58	7.1	42.7	64.1#
57	0.0	15.8	23.8#
100	0.0	10.0	15.0#

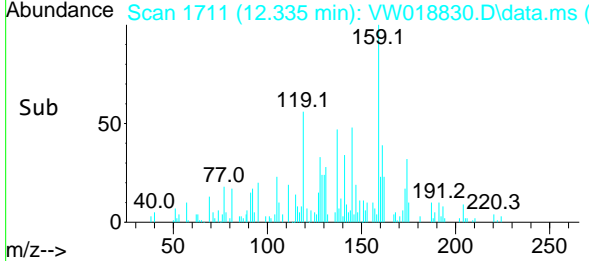
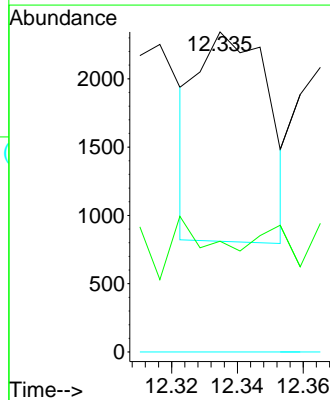


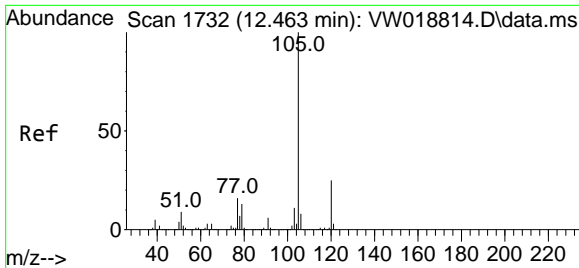
#59
 Bromoform
 Concen: 1.63 ug/L
 RT: 12.335 min Scan# 1711
 Delta R.T. -0.012 min
 Lab File: VW018830.D
 Acq: 28 Apr 2021 19:07



Tgt Ion: 173 Resp: 2289

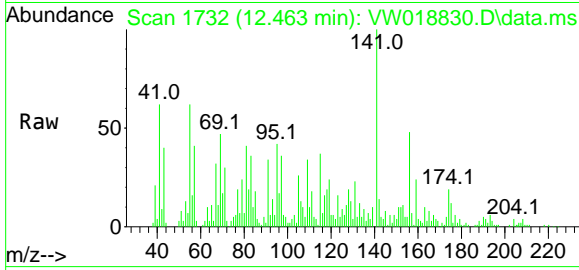
Ion	Ratio	Lower	Upper
173	100		
175	27.3	37.5	56.3#
254	0.0	7.0	10.4#





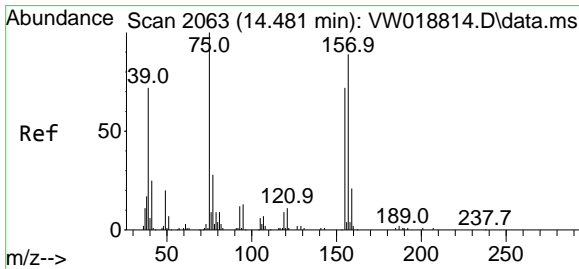
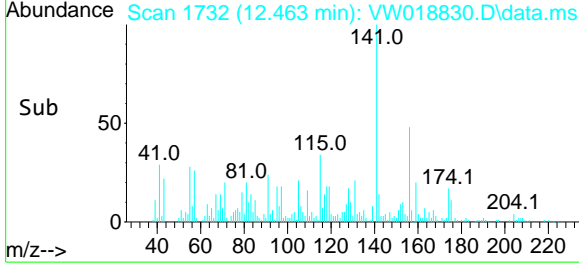
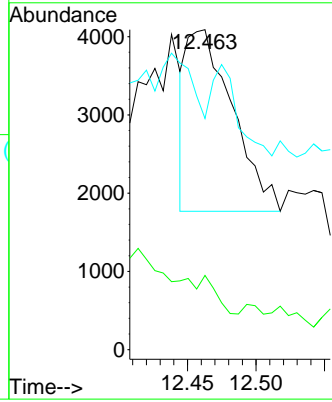
#60
 Isopropylbenzene
 Concen: 0.38 ug/L
 RT: 12.463 min Scan# 1732
 Delta R.T. -0.000 min
 Lab File: VW018830.D
 Acq: 28 Apr 2021 19:07

Instrument :
 MSVOA_W
 ClientSampled :

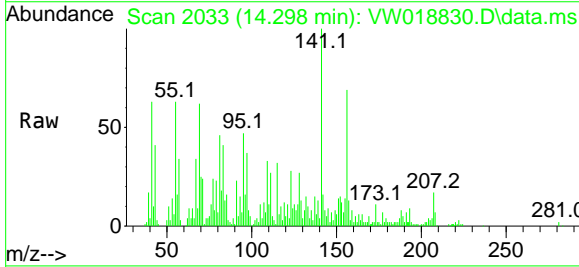


Tgt Ion:105 Resp: 5430

Ion	Ratio	Lower	Upper
105	100		
120	0.0	21.1	31.7#
77	27.2	13.2	19.8#



#68
 1,2-Dibromo-3-chloropropane
 Concen: 7.40 ug/L
 RT: 14.298 min Scan# 2033
 Delta R.T. -0.183 min
 Lab File: VW018830.D
 Acq: 28 Apr 2021 19:07



Tgt Ion: 75 Resp: 3454

Ion	Ratio	Lower	Upper
75	100		
155	272.3	59.4	89.0#
157	258.7	72.2	108.2#

