

Data Path : Z:\voasrv\HPCHEM1\MSVOA\_W\Data\VW042822\  
 Data File : VW022661.D  
 Acq On : 28 Apr 2022 13:26  
 Operator : SY/VA  
 Sample : N2562-14  
 Misc : 6.07g/10mL/MSVOA\_W/SOIL  
 ALS Vial : 1 Sample Multiplier: 1

Instrument :  
 MSVOA\_W  
 ClientSampleId :  
 EW475

Integration Parameters: LSCINT.P

Integrator: RTE  
 Smoothing : OFF Filtering: 5  
 Sampling : 1 Min Area: 0 % of largest Peak  
 Start Thrs: 0.2 Max Peaks: 100  
 Stop Thrs : 0 Peak Location: TOP

If leading or trailing edge < 100 prefer < Baseline drop else tangent >  
 Peak separation: 5

Method : Z:\voasrv\HPCHEM1\MSVOA\_W\Method\SFAMWLM040722SMA.M  
 Title : SFAM01.0

Signal : TIC: VW022661.D\data.ms

peak #	R.T. min	first scan	max scan	last scan	PK TY	peak height	corr. area	corr. % max.	% of total
1	2.355	69	74	85	rVB	91882	147181	13.92%	1.795%
2	2.885	157	161	171	rVB	62851	122767	11.61%	1.497%
3	3.324	231	233	235	rBV3	1400	1334	0.13%	0.016%
4	3.678	289	291	292	rBV	1350	1042	0.10%	0.013%
5	3.775	306	307	311	rBV4	973	1160	0.11%	0.014%
6	3.891	325	326	329	rBV3	1071	850	0.08%	0.010%
7	4.019	336	347	361	rBV	103325	299428	28.31%	3.652%
8	4.330	397	398	400	rBV	1079	918	0.09%	0.011%
9	4.464	418	420	424	rVB5	889	910	0.09%	0.011%
10	4.556	433	435	437	rBV3	782	617	0.06%	0.008%
11	4.635	442	448	449	rBV5	1204	1776	0.17%	0.022%
12	4.763	467	469	470	rVB2	913	554	0.05%	0.007%
13	4.781	470	472	473	rBV2	725	553	0.05%	0.007%
14	4.915	484	494	508	rBV2	35765	117435	11.10%	1.432%
15	5.117	522	527	529	rBV4	2017	2890	0.27%	0.035%
16	5.269	549	552	554	rBV3	752	765	0.07%	0.009%
17	5.299	554	557	561	rVV5	976	1431	0.14%	0.017%
18	5.427	574	578	579	rBV4	1392	1750	0.17%	0.021%
19	5.629	609	611	613	rBV3	832	920	0.09%	0.011%
20	5.647	613	614	617	rVV3	1070	853	0.08%	0.010%
21	5.879	650	652	655	rVB4	1358	753	0.07%	0.009%
22	5.934	655	661	662	rBV4	4815	6005	0.57%	0.073%
23	6.007	671	673	677	rVB4	1102	1560	0.15%	0.019%
24	6.043	677	679	681	rBV3	650	747	0.07%	0.009%
25	6.074	681	684	685	rBV3	759	719	0.07%	0.009%
26	6.092	685	687	690	rVB4	810	830	0.08%	0.010%
27	6.190	702	703	705	rBV2	991	613	0.06%	0.007%
28	6.446	743	745	749	rBV5	811	1017	0.10%	0.012%
29	6.604	770	771	774	rVB3	1090	673	0.06%	0.008%
30	6.635	774	776	781	rBV5	761	1108	0.10%	0.014%
31	6.702	784	787	788	rBV3	736	678	0.06%	0.008%
32	6.799	801	803	804	rBV2	932	687	0.06%	0.008%
33	6.848	806	811	812	rVV4	779	688	0.07%	0.008%
34	6.921	822	823	825	rBV2	827	689	0.07%	0.008%
35	7.080	840	849	857	rBV	36974	105231	9.95%	1.284%
36	7.348	892	893	894	rBV	971	553	0.05%	0.007%

Data Path : Z:\voasrv\HPCHEM1\MSVOA\_W\Data\VW042822\  
 Data File : VW022661.D  
 Acq On : 28 Apr 2022 13:26  
 Operator : SY/VA  
 Sample : N2562-14  
 Misc : 6.07g/10mL/MSVOA\_W/SOIL  
 ALS Vial : 1 Sample Multiplier: 1

Instrument :  
 MSVOA\_W  
 ClientSampleId :  
 EW475

Integration Parameters: LSCINT.P

Integrator: RTE  
 Smoothing : OFF  
 Sampling : 1  
 Start Thrs: 0.2  
 Stop Thrs : 0

Filtering: 5  
 Min Area: 0 % of largest Peak  
 Max Peaks: 100  
 Peak Location: TOP

If leading or trailing edge < 100 prefer < Baseline drop else tangent >  
 Peak separation: 5

Method : Z:\voasrv\HPCHEM1\MSVOA\_W\Method\SFAMWLM040722SMA.M  
 Title : SFAM01.0

37	7.488	914	916	919	rBV4	852	703	0.07%	0.009%
38	7.647	932	942	952	rBV	207353	508505	48.08%	6.202%
39	7.744	956	958	960	rBV3	933	747	0.07%	0.009%
40	7.872	977	979	981	rBV2	769	576	0.05%	0.007%
41	8.031	1003	1005	1007	rBV3	1196	1175	0.11%	0.014%
42	8.201	1031	1033	1035	rBV2	653	554	0.05%	0.007%
43	8.275	1035	1045	1062	rBV3	344555	1057613	100.00%	12.900%
44	8.841	1129	1138	1148	rBV	428830	852980	80.65%	10.404%
45	9.000	1161	1164	1167	rBV5	1005	1194	0.11%	0.015%
46	9.073	1172	1176	1184	rVB5	2294	5208	0.49%	0.064%
47	9.274	1201	1209	1220	rBV	261617	521633	49.32%	6.363%
48	9.433	1232	1235	1236	rBV3	1503	1707	0.16%	0.021%
49	9.658	1268	1272	1273	rBV3	1891	2378	0.22%	0.029%
50	9.719	1280	1282	1284	rVB2	827	714	0.07%	0.009%
51	9.744	1284	1286	1288	rBV3	931	866	0.08%	0.011%
52	9.878	1306	1308	1316	rVB7	1518	2031	0.19%	0.025%
53	10.036	1326	1334	1342	rBV	122252	228669	21.62%	2.789%
54	10.323	1373	1381	1388	rBV	471777	821513	77.68%	10.020%
55	10.506	1410	1411	1414	rVB3	1563	919	0.09%	0.011%
56	10.579	1416	1423	1433	rVB	76571	134692	12.74%	1.643%
57	10.695	1440	1442	1450	rVB4	6149	11996	1.13%	0.146%
58	10.817	1460	1462	1464	rVB3	741	647	0.06%	0.008%
59	10.847	1465	1467	1468	rBV2	1617	1196	0.11%	0.015%
60	10.927	1473	1480	1493	rBV	137802	251244	23.76%	3.065%
61	11.250	1530	1533	1534	rBV3	1033	866	0.08%	0.011%
62	11.329	1544	1546	1547	rBV2	1114	749	0.07%	0.009%
63	11.347	1547	1549	1551	rVV2	801	598	0.06%	0.007%
64	11.390	1554	1556	1557	rBV2	881	663	0.06%	0.008%
65	11.408	1557	1559	1562	rBV4	897	1190	0.11%	0.015%
66	11.481	1568	1571	1572	rBV3	795	737	0.07%	0.009%
67	11.536	1578	1580	1584	rBV4	953	1412	0.13%	0.017%
68	11.628	1587	1595	1605	rBV	580005	980895	92.75%	11.964%
69	11.707	1605	1608	1609	rBV3	1802	1866	0.18%	0.023%
70	11.835	1624	1629	1638	rBV10	3087	8484	0.80%	0.103%
71	11.975	1647	1652	1653	rBV4	898	1659	0.16%	0.020%
72	12.256	1695	1698	1701	rVB4	1099	1272	0.12%	0.016%
73	12.463	1728	1732	1739	rVB7	5728	9696	0.92%	0.118%
74	12.609	1749	1756	1762	rVB5	11790	23375	2.21%	0.285%
75	12.688	1763	1769	1777	rBV	219742	362932	34.32%	4.427%
76	12.829	1791	1792	1794	rBV2	954	672	0.06%	0.008%

Data Path : Z:\voasrv\HPCHEM1\MSVOA\_W\Data\VW042822\  
 Data File : VW022661.D  
 Acq On : 28 Apr 2022 13:26  
 Operator : SY/VA  
 Sample : N2562-14  
 Misc : 6.07g/10mL/MSVOA\_W/SOIL  
 ALS Vial : 1 Sample Multiplier: 1

Instrument :  
 MSVOA\_W  
 ClientSampleId :  
 EW475

Integration Parameters: LSCINT.P

Integrator: RTE  
 Smoothing : OFF                   Filtering: 5  
 Sampling : 1                       Min Area: 0 % of largest Peak  
 Start Thrs: 0.2                   Max Peaks: 100  
 Stop Thrs : 0                     Peak Location: TOP

If leading or trailing edge < 100 prefer < Baseline drop else tangent >  
 Peak separation: 5

Method : Z:\voasrv\HPCHEM1\MSVOA\_W\Method\SFAMWLM040722SMA.M  
 Title : SFAM01.0

77	12.938	1803	1810	1817	rBV5	12708	24057	2.27%	0.293%
78	13.085	1831	1834	1836	rBV2	931	1215	0.11%	0.015%
79	13.188	1847	1851	1856	rVB5	3003	4354	0.41%	0.053%
80	13.243	1857	1860	1867	rVB5	4442	7353	0.70%	0.090%
81	13.292	1867	1868	1870	rBV2	1299	934	0.09%	0.011%
82	13.463	1893	1896	1897	rBV2	1495	1479	0.14%	0.018%
83	13.554	1905	1911	1925	rVB	535931	859172	81.24%	10.480%
84	13.749	1942	1943	1944	rBV	968	664	0.06%	0.008%
85	13.786	1948	1949	1952	rBV2	781	682	0.06%	0.008%
86	13.853	1952	1960	1967	rBV	375525	639049	60.42%	7.795%
87	13.950	1973	1976	1979	rBV5	2111	2513	0.24%	0.031%
88	14.066	1991	1995	1999	rVB	4502	6681	0.63%	0.081%
89	14.206	2016	2018	2021	rBV4	877	921	0.09%	0.011%
90	14.328	2033	2038	2040	rBV6	1663	2557	0.24%	0.031%
91	14.420	2051	2053	2055	rVB2	1357	871	0.08%	0.011%
92	14.469	2059	2061	2063	rVB3	1476	1023	0.10%	0.012%
93	14.621	2083	2086	2093	rVB7	2516	4885	0.46%	0.060%
94	14.676	2093	2095	2097	rBV2	880	1112	0.11%	0.014%
95	14.871	2125	2127	2129	rBV3	829	706	0.07%	0.009%
96	14.920	2133	2135	2136	rBV2	1307	774	0.07%	0.009%
97	15.743	2268	2270	2272	rBV3	1018	942	0.09%	0.011%
98	15.852	2286	2288	2289	rBV2	1159	896	0.08%	0.011%
99	16.291	2358	2360	2361	rBV2	663	570	0.05%	0.007%
100	16.578	2405	2407	2408	rBV	1271	815	0.08%	0.010%

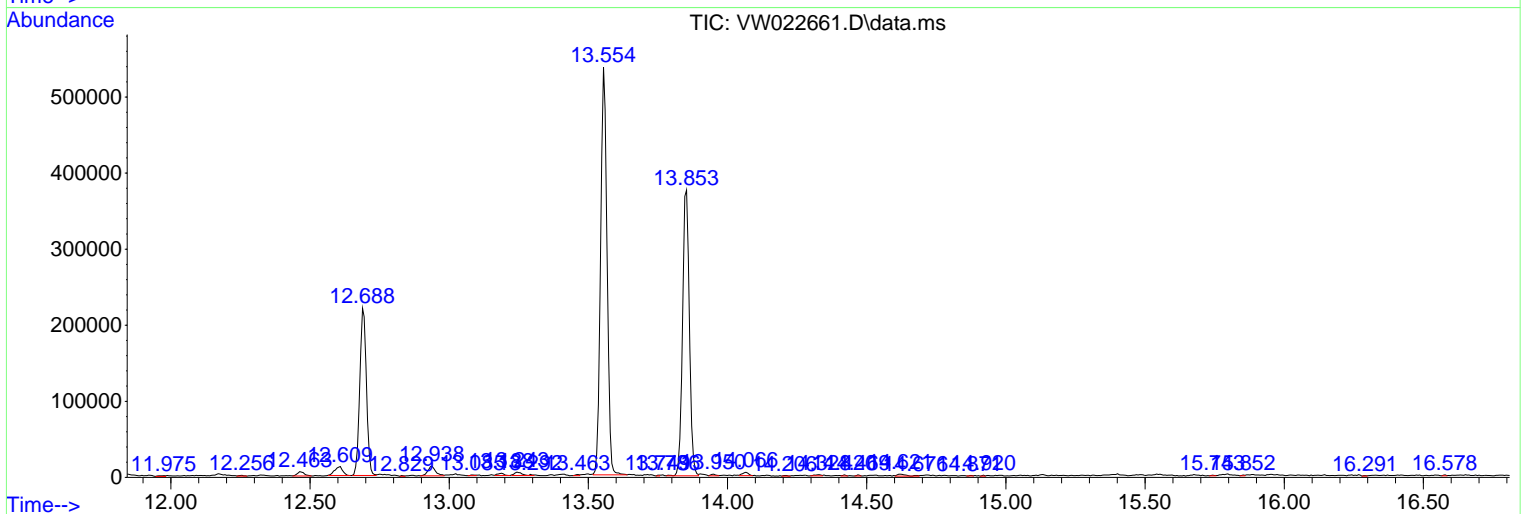
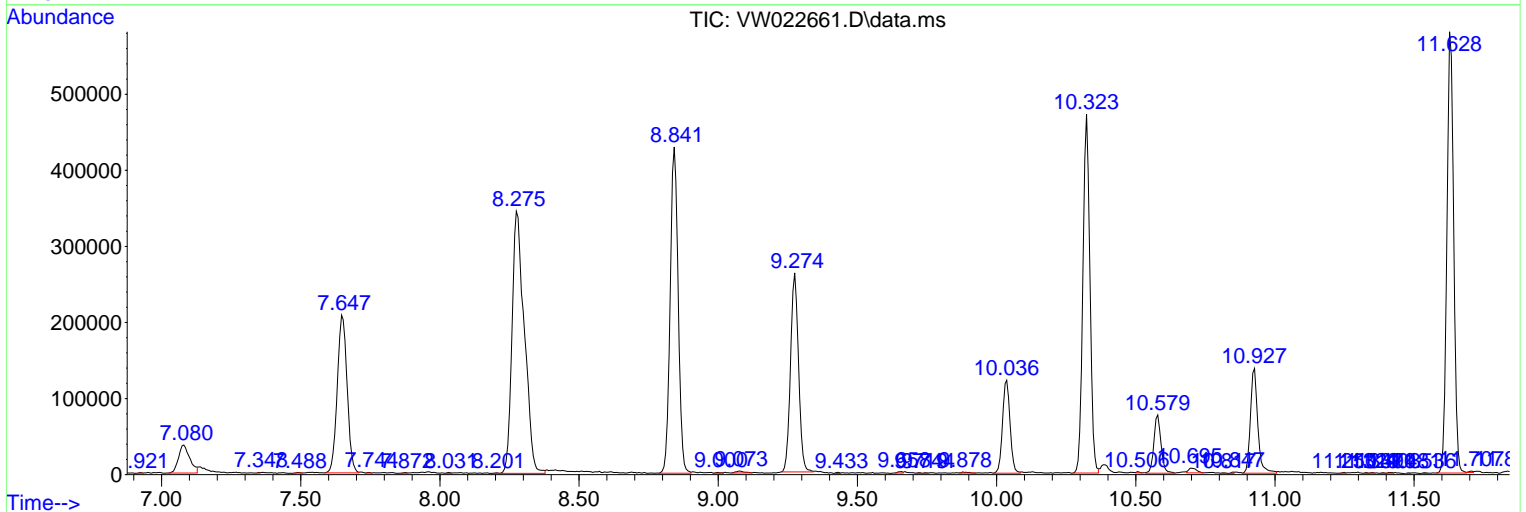
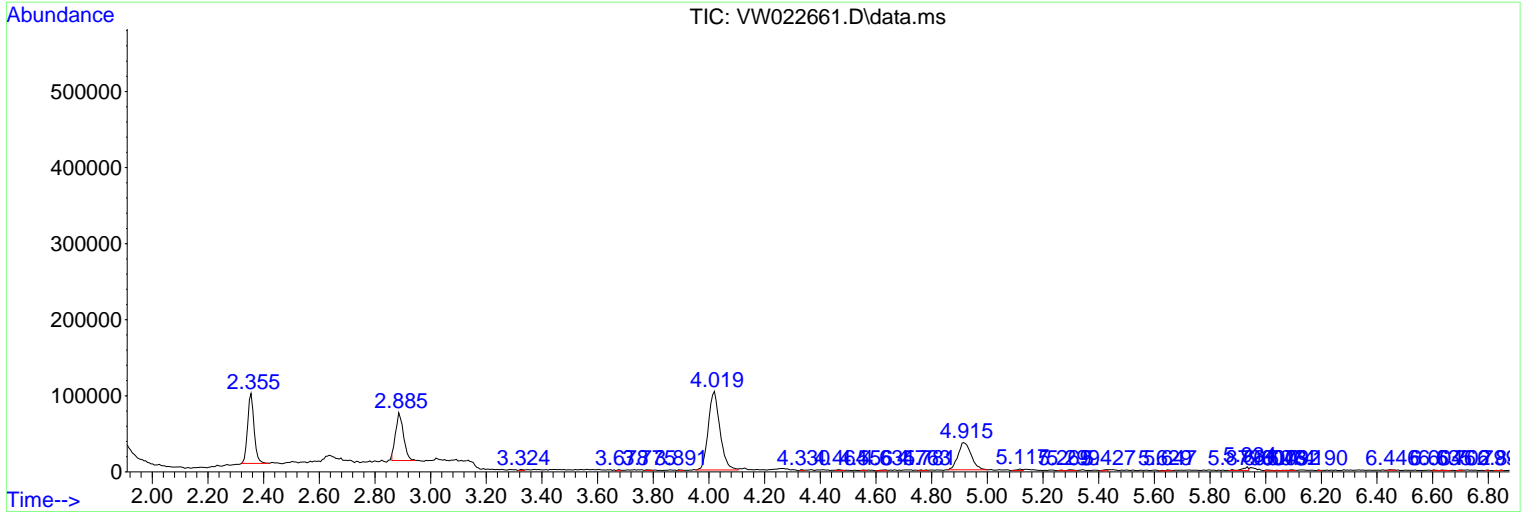
Sum of corrected areas: 8198436

Data Path : Z:\voasrv\HPCHEM1\MSVOA\_W\Data\VW042822\  
 Data File : VW022661.D  
 Acq On : 28 Apr 2022 13:26  
 Operator : SY/VA  
 Sample : N2562-14  
 Misc : 6.07g/10mL/MSVOA\_W/SOIL  
 ALS Vial : 1 Sample Multiplier: 1

Instrument :  
 MSVOA\_W  
 ClientSampleId :  
 EW475

Quant Method : Z:\voasrv\HPCHEM1\MSVOA\_W\Method\SFAMWLM040722SMA.M  
 Quant Title : SFAM01.0

TIC Library : C:\Database\NIST20.L  
 TIC Integration Parameters: LSCINT.P



Library Search Compound Report

Data Path : Z:\voasrv\HPCHEM1\MSVOA\_W\Data\VW042822\  
Data File : VW022661.D  
Acq On : 28 Apr 2022 13:26  
Operator : SY/VA  
Sample : N2562-14  
Misc : 6.07g/10mL/MSVOA\_W/SOIL  
ALS Vial : 1 Sample Multiplier: 1

Instrument :  
MSVOA\_W  
ClientSampleId :  
EW475

Quant Method : Z:\voasrv\HPCHEM1\MSVOA\_W\Method\SFAMWLM040722SMA.M  
Quant Title : SFAM01.0

TIC Library : C:\Database\NIST20.L  
TIC Integration Parameters: LSCINT.P

No Library Search Compounds Detected

\*\*\*\*\*

Data Path : Z:\voasrv\HPCHEM1\MSVOA\_W\Data\VW042822\  
Data File : VW022661.D  
Acq On : 28 Apr 2022 13:26  
Operator : SY/VA  
Sample : N2562-14  
Misc : 6.07g/10mL/MSVOA\_W/SOIL  
ALS Vial : 1 Sample Multiplier: 1

Instrument :  
MSVOA\_W  
ClientSampleId :  
EW475

Quant Method : Z:\voasrv\HPCHEM1\MSVOA\_W\Method\SFAMWLM040722SMA.M  
Quant Title : SFAM01.0

TIC Library : C:\Database\NIST0.L  
TIC Integration Parameters: LSCINT.P

TIC Top Hit name	RT	EstConc	Units	Response	--Internal Standard--		
					#	RT	Resp Conc

---