

Data Path : Z:\VOASRV\HPCHEM1\MSVOA W\DATA\VW042919\
 Data File : VW010197.D
 Acq On : 29 Apr 2019 23:13
 Operator : SY/VA
 Sample : K2606-07
 Misc : 4.83G/10ML/MSVOA W/SOIL
 ALS Vial : 1 Sample Multiplier: 1

Instrument :
 MSVOA_W
 ClientSampleId :

Quant Time: Apr 30 04:36:16 2019
 Quant Method : Z:\VOASRV\HPCHEM1\MSVOA_W\METHOD\SOM2WLM042919S.M
 Quant Title : VOC Analysis
 QLast Update : Mon Apr 29 15:05:07 2019
 Response via : Initial Calibration

Internal Standards	R.T.	QIon	Response	Conc	Units	Dev(Min)
1) 1,4-Difluorobenzene	8.84	114	491609	25.00	ug/L	0.00
28) Chlorobenzene-d5	11.63	117	485618	25.00	ug/L	0.00
60) 1,4-Dichlorobenzene-d4	13.56	152	221995	25.00	ug/L	0.00

System Monitoring Compounds

4) Vinyl Chloride-d3	2.35	65	88177	15.81	ug/L	0.00
Spiked Amount	25.000	Range	30 - 150	Recovery	=	63.24%
7) Chloroethane-d5	2.89	69	79800	17.45	ug/L	0.00
Spiked Amount	25.000	Range	30 - 150	Recovery	=	69.80%
10) 1,1-Dichloroethene-d2	4.01	63	153225	12.36	ug/L	0.00
Spiked Amount	25.000	Range	45 - 110	Recovery	=	49.44%
20) 2-Butanone-d5	7.07	46	159610	77.60	ug/L	0.00
Spiked Amount	50.000	Range	20 - 135	Recovery	=	155.20%#
24) Chloroform-d	7.65	84	268042	21.04	ug/L	0.00
Spiked Amount	25.000	Range	40 - 150	Recovery	=	84.16%
26) 1,2-Dichloroethane-d4	8.31	65	174158	23.79	ug/L	0.00
Spiked Amount	25.000	Range	70 - 130	Recovery	=	95.16%
29) Benzene-d6	8.27	84	475233	18.17	ug/L	0.00
Spiked Amount	25.000	Range	20 - 135	Recovery	=	72.68%
33) 1,2-Dichloropropane-d6	9.27	67	165864	20.30	ug/L	0.00
Spiked Amount	25.000	Range	70 - 120	Recovery	=	81.20%
37) Toluene-d8	10.32	98	407452	17.13	ug/L	0.00
Spiked Amount	25.000	Range	30 - 130	Recovery	=	68.52%
38) trans-1,3-Dichloropropene-	10.58	79	73643	19.57	ug/L	0.00
Spiked Amount	25.000	Range	30 - 135	Recovery	=	78.28%
39) 2-Hexanone-d5	10.93	63	135953	79.19	ug/L	0.00
Spiked Amount	50.000	Range	20 - 135	Recovery	=	158.38%#
48) 1,1,2,2-Tetrachloroethane-	12.69	84	254085	36.42	ug/L	0.00
Spiked Amount	25.000	Range	45 - 120	Recovery	=	145.68%#
61) 1,2-Dichlorobenzene-d4	13.86	152	191783	23.26	ug/L	0.00
Spiked Amount	25.000	Range	75 - 120	Recovery	=	93.04%

Target Compounds

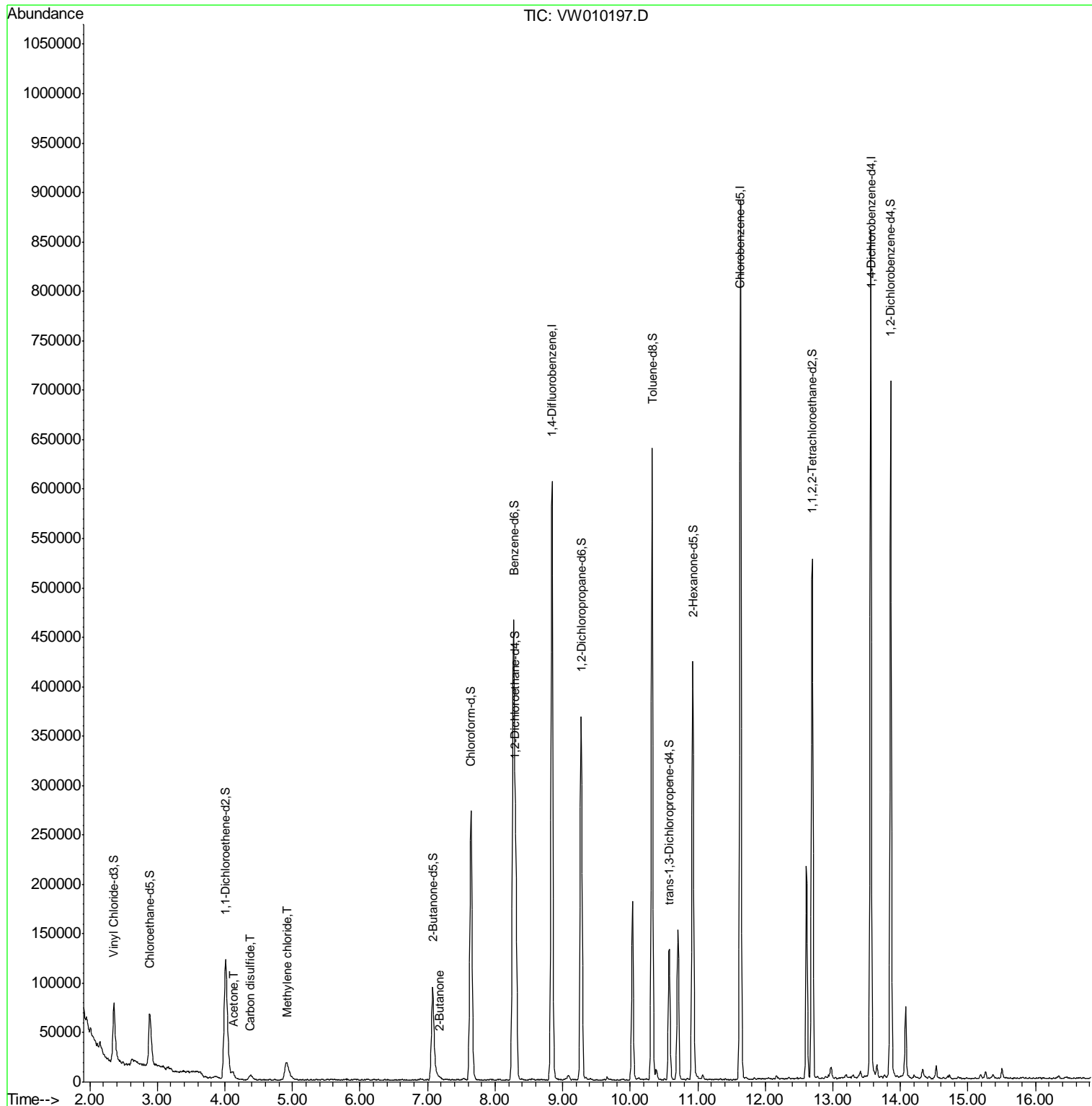
					Ovalue
13) Acetone	4.12	43	10287	6.328	ug/L 96
14) Carbon disulfide	4.37	76	9746	0.567	ug/L 98
16) Methylene chloride	4.92	84	16269	1.989	ug/L 84
21) 2-Butanone	7.18	43	2685	1.178	ug/L 86

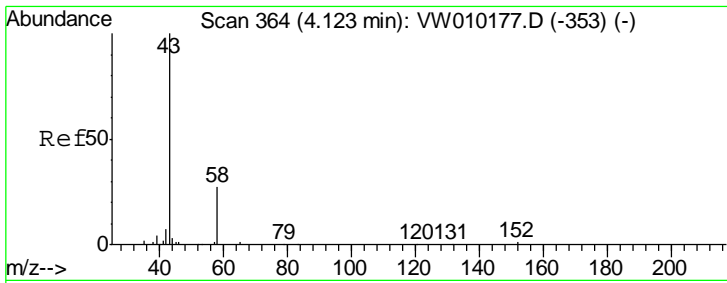
(#) = qualifier out of range (m) = manual integration (+) = signals summed

Data Path : Z:\VOASRV\HPCHEM1\MSVOA W\DATA\VW042919\
 Data File : VW010197.D
 Acq On : 29 Apr 2019 23:13
 Operator : SY/VA
 Sample : K2606-07
 Misc : 4.83G/10ML/MSVOA W/SOIL
 ALS Vial : 1 Sample Multiplier: 1

Instrument :
 MSVOA_W
 ClientSampled :

Quant Time: Apr 30 04:36:16 2019
 Quant Method : Z:\VOASRV\HPCHEM1\MSVOA_W\METHOD\SOM2WLM042919S.M
 Quant Title : VOC Analysis
 QLast Update : Mon Apr 29 15:05:07 2019
 Response via : Initial Calibration

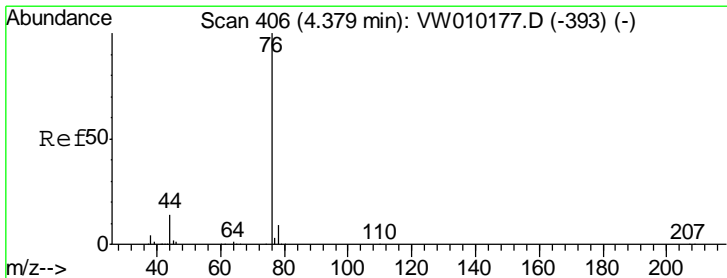
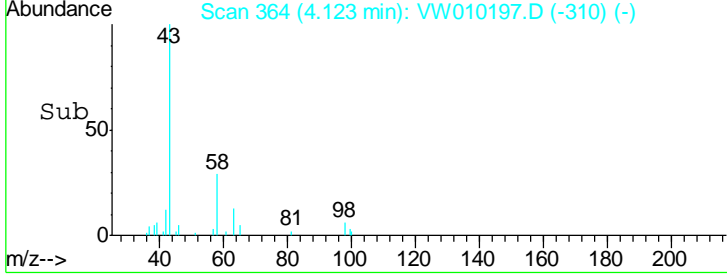
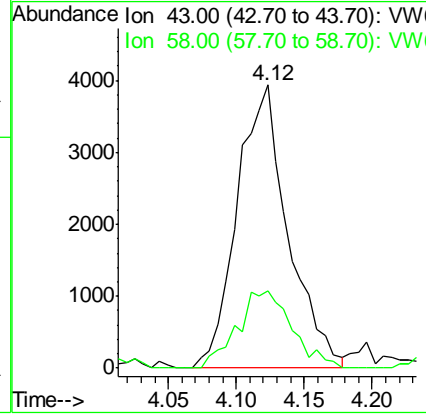
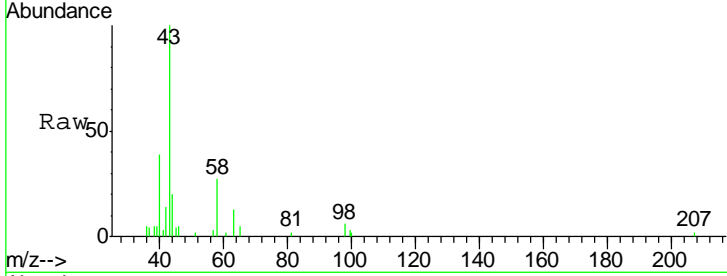




#13
 Acetone
 Concen: 6.328 ug/L
 RT: 4.12 min Scan# 364
 Delta R.T. -0.00 min
 Lab File: VW010197.D
 Acq: 29 Apr 2019 23:13

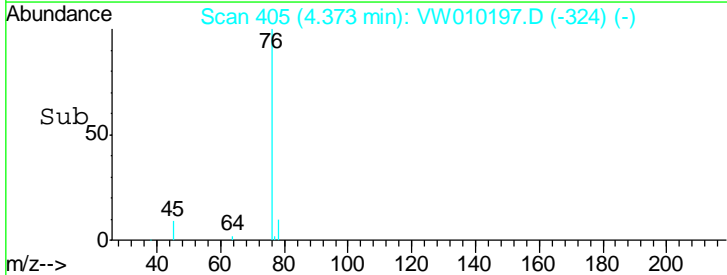
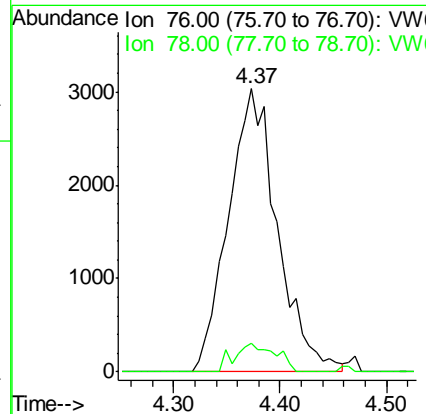
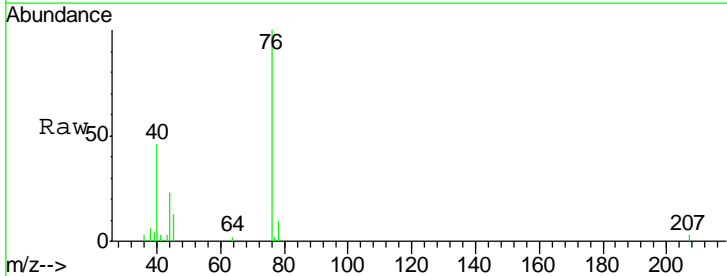
Instrument :
 MSVOA_W
 ClientSampled :

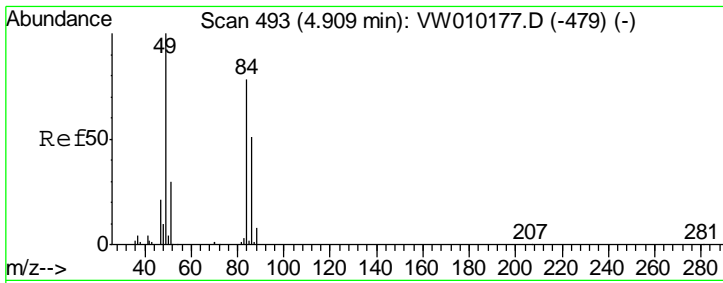
Tgt Ion	Ratio	Lower	Upper
43	100		
58	27.8	0.0	59.8



#14
 Carbon disulfide
 Concen: 0.567 ug/L
 RT: 4.37 min Scan# 405
 Delta R.T. -0.01 min
 Lab File: VW010197.D
 Acq: 29 Apr 2019 23:13

Tgt Ion	Ratio	Lower	Upper
76	100		
78	9.9	7.3	10.9

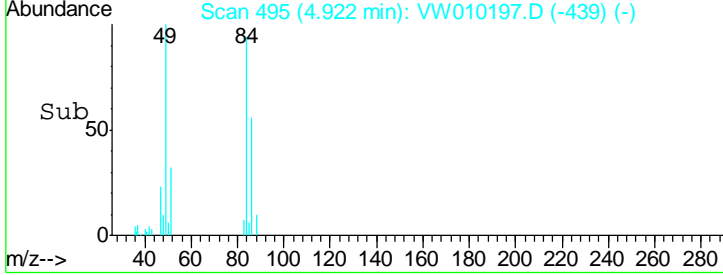
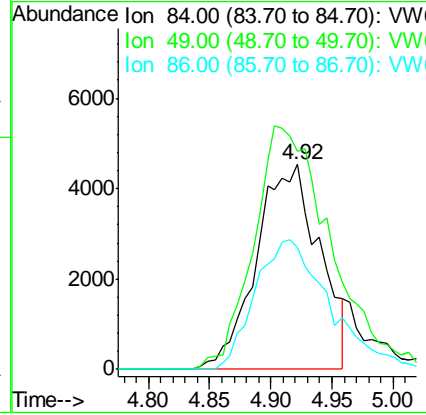
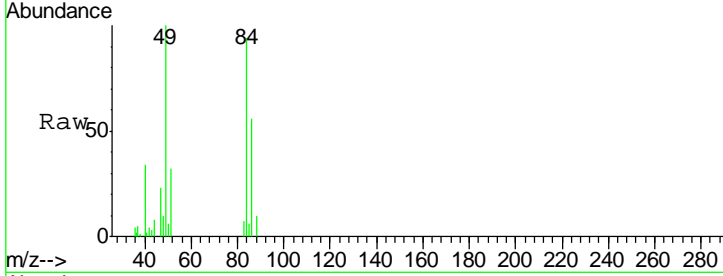




#16
 Methylene chloride
 Concen: 1.989 ug/L
 RT: 4.92 min Scan# 495
 Delta R.T. 0.01 min
 Lab File: VW010197.D
 Acq: 29 Apr 2019 23:13

Instrument :
 MSVOA_W
ClientSampled :

Tgt Ion	Resp	Lower	Upper
84	16269		
84	100		
49	106.4	90.2	167.6
86	59.8	46.3	86.1



#21
 2-Butanone
 Concen: 1.178 ug/L
 RT: 7.18 min Scan# 865
 Delta R.T. 0.01 min
 Lab File: VW010197.D
 Acq: 29 Apr 2019 23:13

Tgt Ion	Resp	Lower	Upper
43	2685		
43	100		
72	18.7	12.8	38.3

