

Data Path : Z:\VOASRV\HPCHEM1\MSVOA W\DATA\VW042919\
 Data File : VW010213.D
 Acq On : 30 Apr 2019 11:05
 Operator : SY/VA
 Sample : K2606-04
 Misc : 5.14G/10ML/MSVOA W/SOIL
 ALS Vial : 1 Sample Multiplier: 1

Instrument :
 MSVOA_W
 ClientSampleId :
 A5138

Integration Parameters: LSCINT.P

Integrator: RTE
 Smoothing : OFF
 Sampling : 1
 Start Thrs: 0.2
 Stop Thrs : 0

Filtering: 5
 Min Area: 0 % of largest Peak
 Max Peaks: 100
 Peak Location: TOP

If leading or trailing edge < 100 prefer < Baseline drop else tangent >
 Peak separation: 5

Method : Z:\VOASRV\HPCHEM1\MSVOA_W\METHOD\SOM2WLM042919S.M
 Title : VOC Analysis

Signal : TIC

peak #	R.T. min	first scan	max scan	last scan	PK TY	peak height	corr. area	corr. % max.	% of total
1	2.355	69	74	86	rVB	84905	195570	11.54%	1.478%
2	2.891	156	162	174	rVB	64083	173845	10.26%	1.313%
3	3.849	314	319	322	rBV6	1746	3750	0.22%	0.028%
4	4.007	333	345	358	rBV2	142111	487058	28.75%	3.680%
5	4.117	359	363	374	rVB2	18938	50634	2.99%	0.383%
6	4.391	399	408	410	rBV6	2436	5545	0.33%	0.042%
7	4.672	450	454	456	rVV4	1145	1984	0.12%	0.015%
8	4.915	482	494	501	rBV5	8441	30464	1.80%	0.230%
9	5.537	593	596	599	rBV2	967	1411	0.08%	0.011%
10	5.787	625	637	643	rBV7	3434	11314	0.67%	0.085%
11	5.921	656	659	669	rVB6	2322	5371	0.32%	0.041%
12	6.098	684	688	690	rBV4	1327	2224	0.13%	0.017%
13	6.897	809	819	829	rVV4	13784	41622	2.46%	0.314%
14	7.074	838	848	858	rBV	69981	204138	12.05%	1.542%
15	7.482	912	915	916	rBV2	1266	980	0.06%	0.007%
16	7.513	916	920	922	rBV4	1616	2122	0.13%	0.016%
17	7.641	931	941	955	rVV	343174	817773	48.27%	6.178%
18	7.823	968	971	973	rBV	1207	1608	0.09%	0.012%
19	7.958	986	993	996	rBV5	1351	3716	0.22%	0.028%
20	8.067	1009	1011	1013	rVV3	1371	1368	0.08%	0.010%
21	8.275	1035	1045	1061	rVV2	561343	1694338	100.00%	12.801%
22	8.397	1061	1065	1069	rVB6	1473	2647	0.16%	0.020%
23	8.555	1084	1091	1095	rBV5	6493	14535	0.86%	0.110%
24	8.707	1108	1116	1122	rBV7	7447	18257	1.08%	0.138%
25	8.842	1129	1138	1151	rBV	764760	1488047	87.82%	11.242%
26	9.037	1165	1170	1176	rBV8	2677	6256	0.37%	0.047%
27	9.274	1199	1209	1219	rBV	362373	748759	44.19%	5.657%
28	9.409	1225	1231	1242	rVB2	63098	119385	7.05%	0.902%
29	9.659	1267	1272	1279	rVV5	2544	5384	0.32%	0.041%
30	9.726	1282	1283	1286	rBV2	1138	1107	0.07%	0.008%
31	10.030	1326	1333	1342	rBV	190803	346576	20.45%	2.618%
32	10.122	1344	1348	1353	rVB5	2221	4156	0.25%	0.031%
33	10.213	1356	1363	1369	rBV3	3667	7530	0.44%	0.057%
34	10.323	1372	1381	1388	rBV	642937	1128480	66.60%	8.526%

Data Path : Z:\VOASRV\HPCHEM1\MSVOA W\DATA\VW042919\
 Data File : VW010213.D
 Acq On : 30 Apr 2019 11:05
 Operator : SY/VA
 Sample : K2606-04
 Misc : 5.14G/10ML/MSVOA W/SOIL
 ALS Vial : 1 Sample Multiplier: 1

Instrument :
 MSVOA_W
 ClientSampleId :
 A5138

Integration Parameters: LSCINT.P

Integrator: RTE
 Smoothing : OFF
 Sampling : 1
 Start Thrs: 0.2
 Stop Thrs : 0

Filtering: 5
 Min Area: 0 % of largest Peak
 Max Peaks: 100
 Peak Location: TOP

If leading or trailing edge < 100 prefer < Baseline drop else tangent >
 Peak separation: 5

Method : Z:\VOASRV\HPCHEM1\MSVOA_W\METHOD\SOM2WLM042919S.M
 Title : VOC Analysis

35	10.384	1388	1391	1399	rVB2	8386	16380	0.97%	0.124%
36	10.475	1403	1406	1407	rBV3	1412	1109	0.07%	0.008%
37	10.494	1407	1409	1412	rBV3	1352	1672	0.10%	0.013%
38	10.579	1416	1423	1430	rBV2	123101	223765	13.21%	1.691%
39	10.707	1437	1444	1454	rVB	26780	50232	2.96%	0.380%
40	10.853	1465	1468	1472	rVB4	1893	3167	0.19%	0.024%
41	10.927	1472	1480	1493	rBV	242149	418965	24.73%	3.165%
42	11.073	1497	1504	1518	rVB	463082	735861	43.43%	5.560%
43	11.238	1529	1531	1533	rBV2	1417	1328	0.08%	0.010%
44	11.408	1555	1559	1560	rBV2	1413	2071	0.12%	0.016%
45	11.469	1567	1569	1571	rVV2	895	978	0.06%	0.007%
46	11.567	1579	1585	1588	rVV4	2412	4743	0.28%	0.036%
47	11.634	1588	1596	1604	rVV	798904	1389332	82.00%	10.497%
48	11.731	1607	1612	1619	rVB6	3790	7408	0.44%	0.056%
49	11.835	1622	1629	1643	rBV4	15431	39343	2.32%	0.297%
50	11.945	1644	1647	1656	rVB8	4610	8486	0.50%	0.064%
51	12.018	1656	1659	1663	rVB3	1745	2415	0.14%	0.018%
52	12.103	1671	1673	1677	rVB2	1144	1184	0.07%	0.009%
53	12.176	1679	1685	1691	rVB9	3773	7768	0.46%	0.059%
54	12.243	1691	1696	1698	rBV4	3112	5105	0.30%	0.039%
55	12.341	1705	1712	1718	rBV3	36327	61935	3.66%	0.468%
56	12.408	1721	1723	1728	rVB5	813	986	0.06%	0.007%
57	12.463	1728	1732	1738	rBV6	2338	4151	0.24%	0.031%
58	12.615	1750	1757	1762	rVB	31272	55436	3.27%	0.419%
59	12.695	1762	1770	1777	rBV	295131	481711	28.43%	3.639%
60	12.756	1777	1780	1782	rBV3	1894	2431	0.14%	0.018%
61	12.932	1801	1809	1813	rVV7	9779	22503	1.33%	0.170%
62	12.969	1813	1815	1821	rVB3	5381	8037	0.47%	0.061%
63	13.048	1821	1828	1832	rBV7	7400	14532	0.86%	0.110%
64	13.103	1832	1837	1841	rVV6	6025	11858	0.70%	0.090%
65	13.158	1842	1846	1849	rVV5	3280	6033	0.36%	0.046%
66	13.213	1851	1855	1860	rVV7	3857	8387	0.50%	0.063%
67	13.298	1860	1869	1873	rVB9	4046	11079	0.65%	0.084%
68	13.396	1879	1885	1894	rBV4	29584	49285	2.91%	0.372%
69	13.469	1894	1897	1899	rBV3	3806	4625	0.27%	0.035%
70	13.499	1899	1902	1905	rVV4	6322	9269	0.55%	0.070%
71	13.560	1905	1912	1923	rVV	618521	987147	58.26%	7.458%

Data Path : Z:\VOASRV\HPCHEM1\MSVOA W\DATA\VW042919\
 Data File : VW010213.D
 Acq On : 30 Apr 2019 11:05
 Operator : SY/VA
 Sample : K2606-04
 Misc : 5.14G/10ML/MSVOA W/SOIL
 ALS Vial : 1 Sample Multiplier: 1

Instrument :
 MSVOA_W
 ClientSampleId :
 A5138

Integration Parameters: LSCINT.P

Integrator: RTE
 Smoothing : OFF
 Sampling : 1
 Start Thrs: 0.2
 Stop Thrs : 0

Filtering: 5
 Min Area: 0 % of largest Peak
 Max Peaks: 100
 Peak Location: TOP

If leading or trailing edge < 100 prefer < Baseline drop else tangent >
 Peak separation: 5

Method : Z:\VOASRV\HPCHEM1\MSVOA_W\METHOD\SOM2WLM042919S.M
 Title : VOC Analysis

72	13.853	1953	1960	1967	rBV	442260	752201	44.39%	5.683%
73	14.024	1985	1988	1992	rVB6	2694	3813	0.23%	0.029%
74	14.078	1992	1997	2004	rVB2	30677	51302	3.03%	0.388%
75	14.152	2008	2009	2012	rVB3	1384	1090	0.06%	0.008%
76	14.200	2013	2017	2018	rBV4	1085	1189	0.07%	0.009%
77	14.219	2018	2020	2022	rBV3	1186	1396	0.08%	0.011%
78	14.328	2033	2038	2045	rBV2	28536	43468	2.57%	0.328%
79	14.493	2063	2065	2066	rVV2	1915	1791	0.11%	0.014%
80	14.530	2067	2071	2075	rVV3	8472	13669	0.81%	0.103%
81	14.566	2075	2077	2080	rVB4	1478	1394	0.08%	0.011%
82	14.591	2080	2081	2084	rBV2	1356	1170	0.07%	0.009%
83	14.633	2084	2088	2092	rVB6	4184	6830	0.40%	0.052%
84	14.731	2102	2104	2110	rVB5	2718	3541	0.21%	0.027%
85	14.847	2121	2123	2126	rBV3	1311	1837	0.11%	0.014%
86	14.956	2137	2141	2149	rVB6	9159	15546	0.92%	0.117%
87	15.078	2157	2161	2163	rBV4	1998	2099	0.12%	0.016%
88	15.188	2175	2179	2184	rVB6	6478	9261	0.55%	0.070%
89	15.261	2186	2191	2196	rVB6	4644	7779	0.46%	0.059%
90	15.377	2204	2210	2213	rBV4	4171	7835	0.46%	0.059%
91	15.505	2228	2231	2233	rVV	2461	2018	0.12%	0.015%
92	15.609	2246	2248	2252	rVB4	815	1171	0.07%	0.009%
93	15.865	2286	2290	2294	rVB6	3486	5659	0.33%	0.043%
94	15.968	2304	2307	2311	rBV4	2458	3356	0.20%	0.025%
95	16.109	2327	2330	2331	rBV3	1764	1910	0.11%	0.014%
96	16.230	2346	2350	2351	rBV3	775	1089	0.06%	0.008%
97	16.304	2360	2362	2364	rBV2	1306	1147	0.07%	0.009%
98	16.578	2405	2407	2412	rVB5	1392	1804	0.11%	0.014%
99	16.639	2416	2417	2421	rVB4	887	949	0.06%	0.007%
100	16.737	2431	2433	2435	rBV2	916	1051	0.06%	0.008%

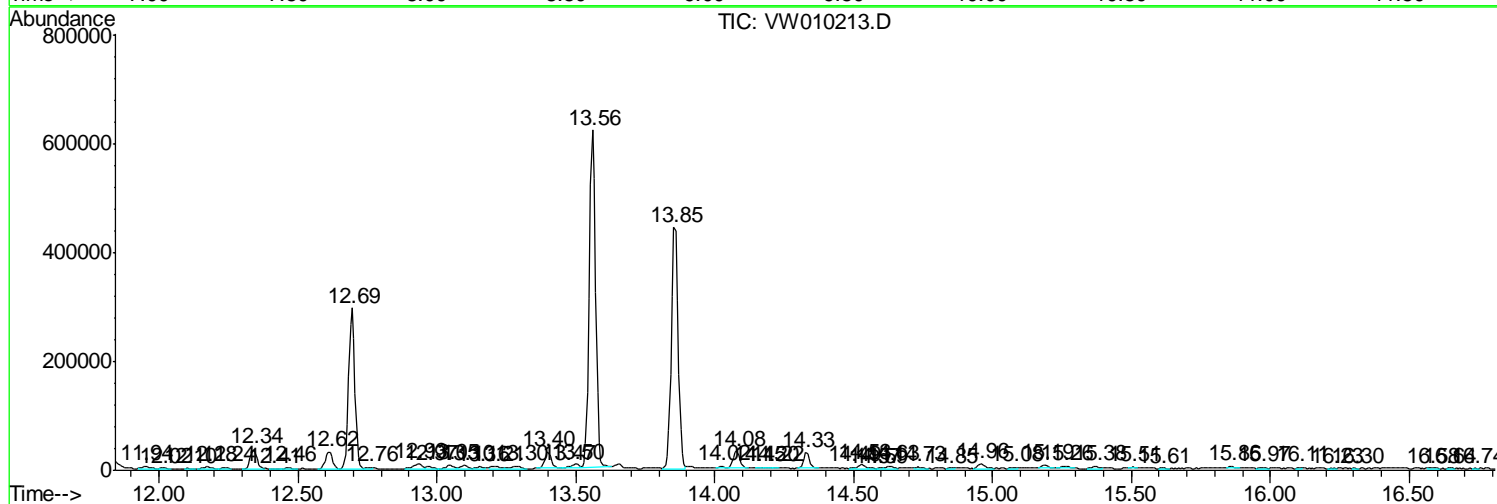
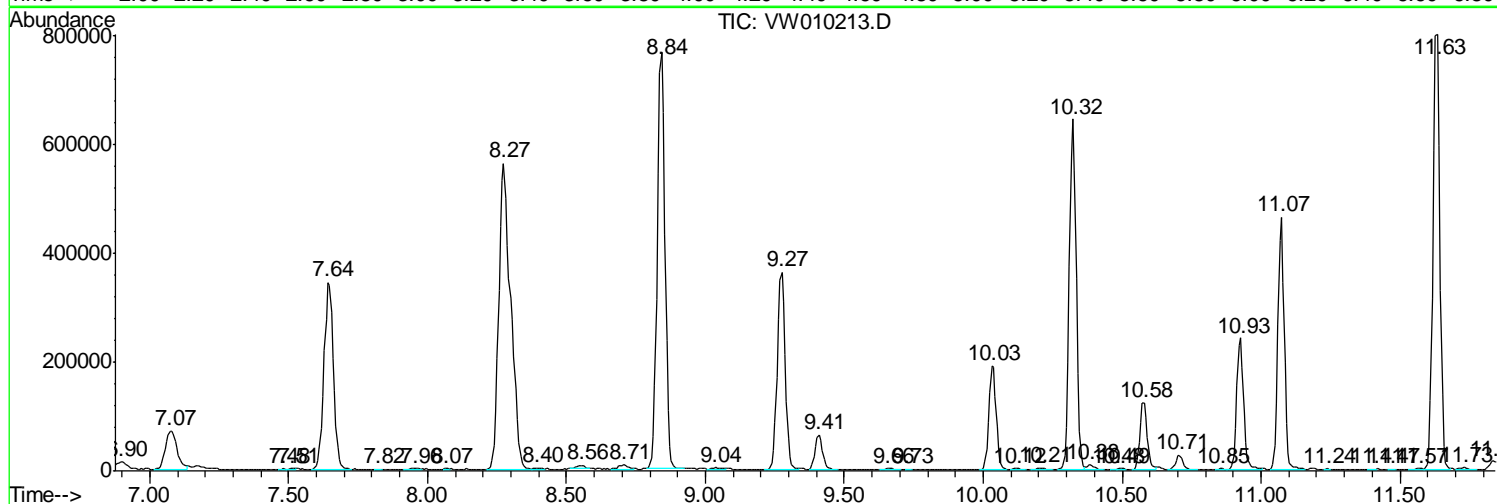
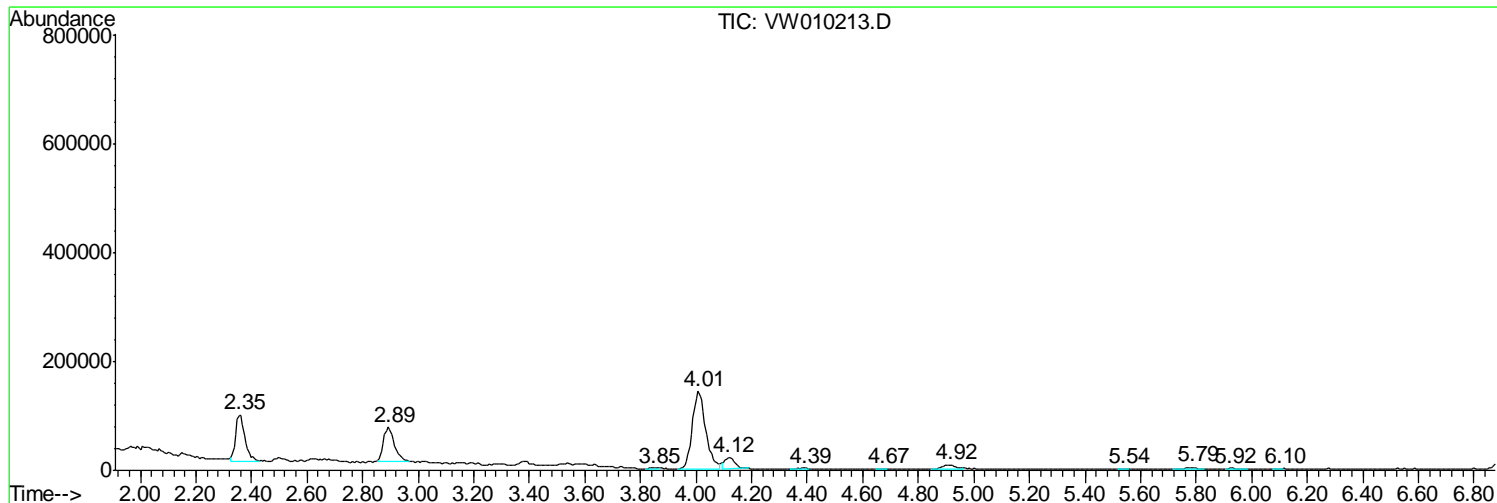
Sum of corrected areas: 13236036

Data Path : Z:\VOASRV\HPCHEM1\MSVOA W\DATA\VW042919\
 Data File : VW010213.D
 Acq On : 30 Apr 2019 11:05
 Operator : SY/VA
 Sample : K2606-04
 Misc : 5.14G/10ML/MSVOA W/SOIL
 ALS Vial : 1 Sample Multiplier: 1

Instrument :
 MSVOA_W
ClientSampled :
 A5138

Quant Method : Z:\VOASRV\HPCHEM1\MSVOA_W\METHOD\SOM2WLM042919S.M
 Quant Title : VOC Analysis

TIC Library : C:\DATABASE\NIST11.L
 TIC Integration Parameters: LSCINT.P



Data Path : Z:\VOASRV\HPCHEM1\MSVOA W\DATA\VW042919\
 Data File : VW010213.D
 Acq On : 30 Apr 2019 11:05
 Operator : SY/VA
 Sample : K2606-04
 Misc : 5.14G/10ML/MSVOA W/SOIL
 ALS Vial : 1 Sample Multiplier: 1

Instrument :
 MSVOA_W
 ClientSampled :
 A5138

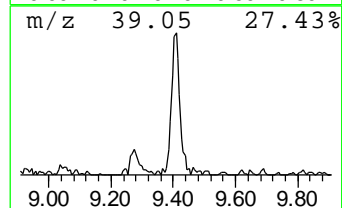
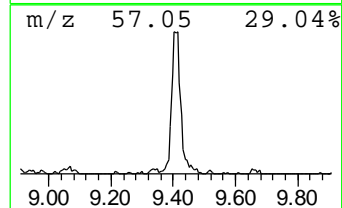
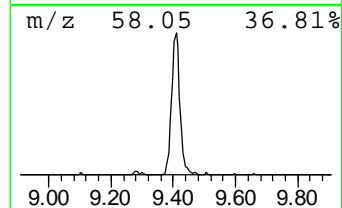
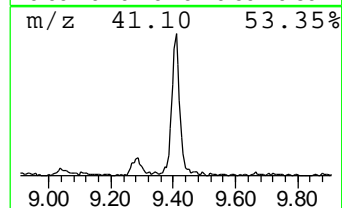
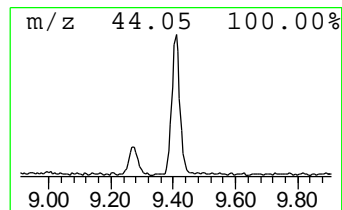
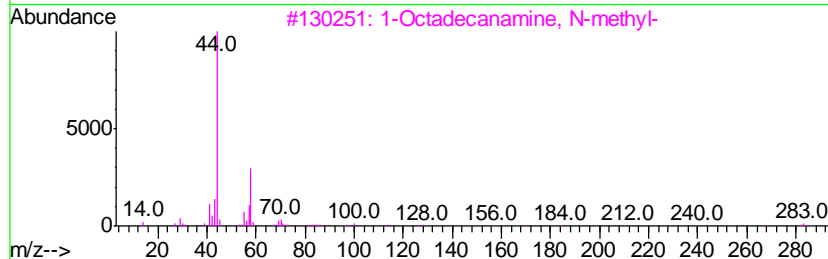
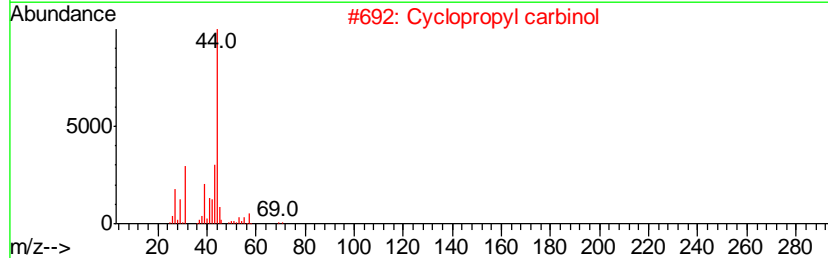
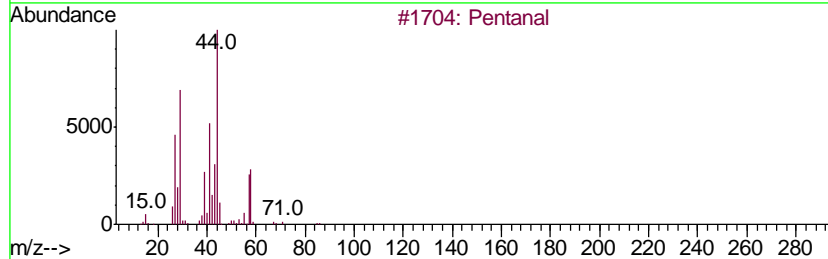
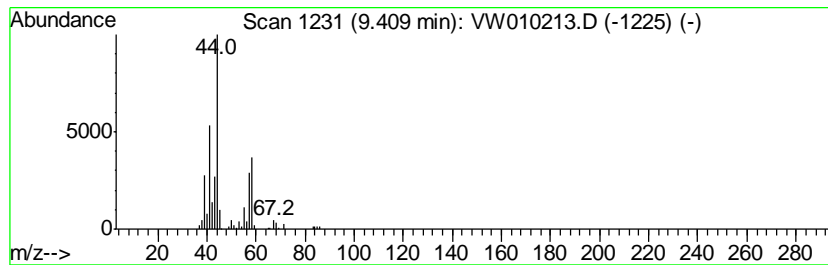
Quant Method : Z:\VOASRV\HPCHEM1\MSVOA_W\METHOD\SOM2WLM042919S.M
 Quant Title : VOC Analysis

TIC Library : C:\DATABASE\NIST11.L
 TIC Integration Parameters: LSCINT.P

 Peak Number 1 Pentanal Concentration Rank 3

R.T.	EstConc	Area	Relative to ISTD	R.T.
9.41	2.01 ug/L	119385	1,4-Difluorobenzene	8.84

Hit#	of	Tentative ID	MW	MolForm	CAS#	Qual
1	5	Pentanal	86	C5H10O	000110-62-3	80
2		Cyclopropyl carbinol	72	C4H8O	002516-33-8	42
3		1-Octadecanamine, N-methyl-	283	C19H41N	002439-55-6	38
4		Pentanal	86	C5H10O	000110-62-3	37
5		Acetamide, 2-cyano-	84	C3H4N2O	000107-91-5	36



Data Path : Z:\VOASRV\HPCHEM1\MSVOA W\DATA\VW042919\
 Data File : VW010213.D
 Acq On : 30 Apr 2019 11:05
 Operator : SY/VA
 Sample : K2606-04
 Misc : 5.14G/10ML/MSVOA W/SOIL
 ALS Vial : 1 Sample Multiplier: 1

Instrument :
 MSVOA_W
 ClientSampled :
 A5138

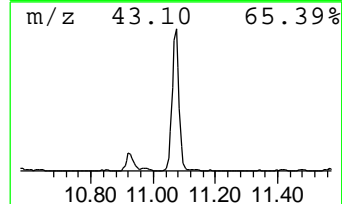
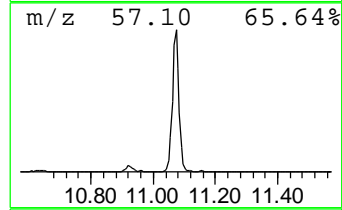
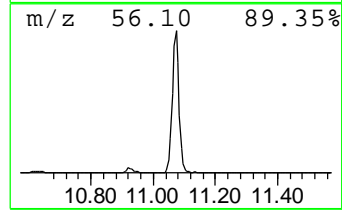
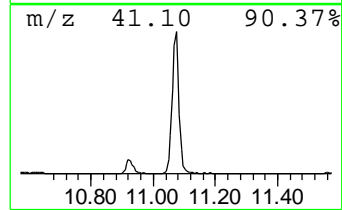
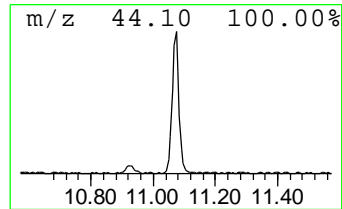
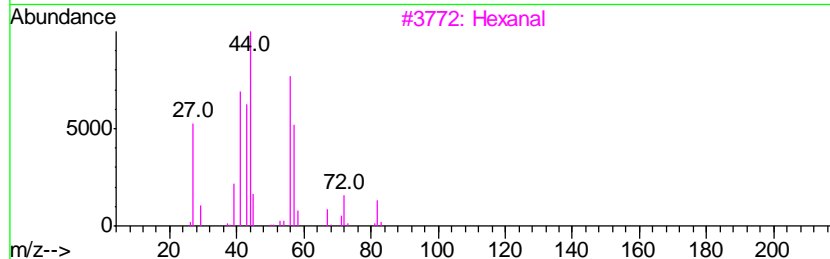
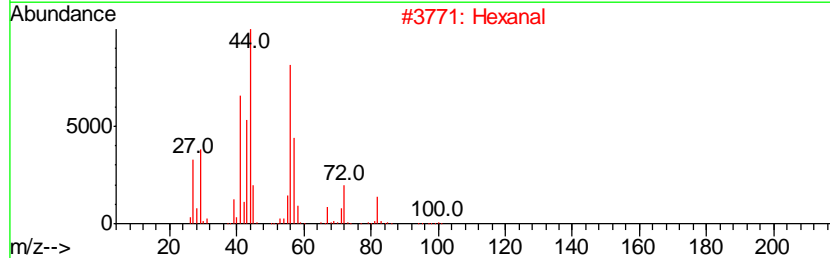
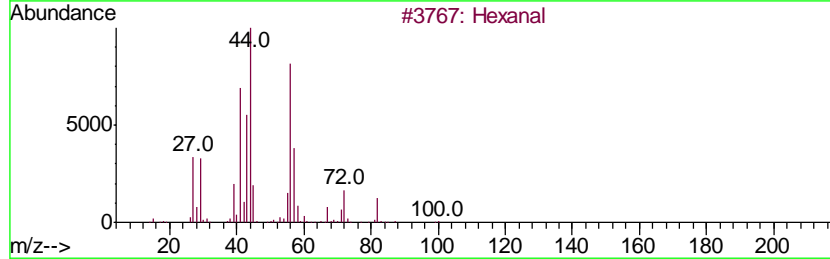
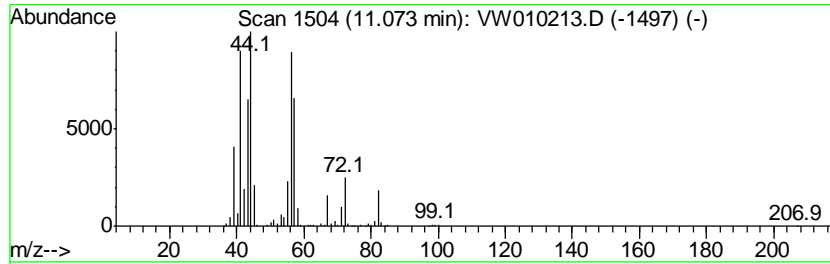
Quant Method : Z:\VOASRV\HPCHEM1\MSVOA_W\METHOD\SOM2WLM042919S.M
 Quant Title : VOC Analysis

TIC Library : C:\DATABASE\NIST11.L
 TIC Integration Parameters: LSCINT.P

 Peak Number 3 Hexanal Concentration Rank 1

R.T.	EstConc	Area	Relative to ISTD	R.T.
11.07	13.24 ug/L	735861	Chlorobenzene-d5	11.63

Hit#	of	Tentative ID	MW	MolForm	CAS#	Qual
1	5	Hexanal	100	C6H12O	000066-25-1	81
2		Hexanal	100	C6H12O	000066-25-1	72
3		Hexanal	100	C6H12O	000066-25-1	64
4		Hexanal	100	C6H12O	000066-25-1	64
5		2,2-Dimethyl-3-hydroxypropionald...	102	C5H10O2	000597-31-9	37



Data Path : Z:\VOASRV\HPCHEM1\MSVOA W\DATA\VW042919\
 Data File : VW010213.D
 Acq On : 30 Apr 2019 11:05
 Operator : SY/VA
 Sample : K2606-04
 Misc : 5.14G/10ML/MSVOA W/SOIL
 ALS Vial : 1 Sample Multiplier: 1

Instrument :
 MSVOA_W
 Client Sampled :
 A5138

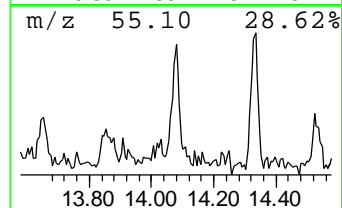
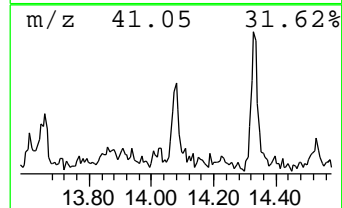
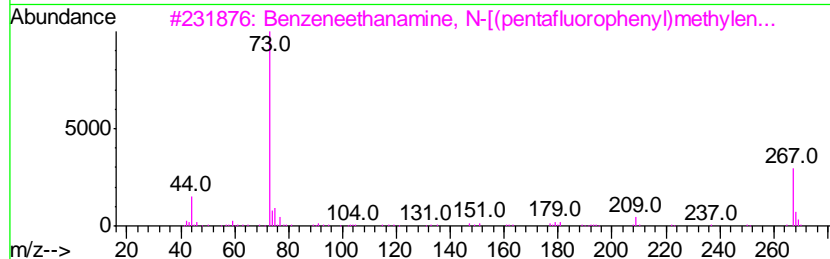
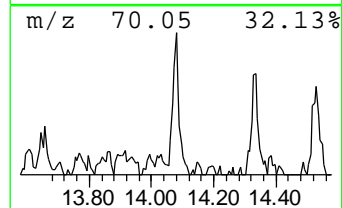
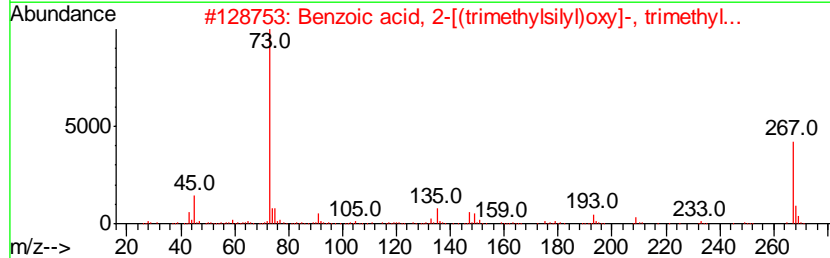
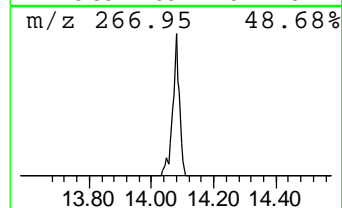
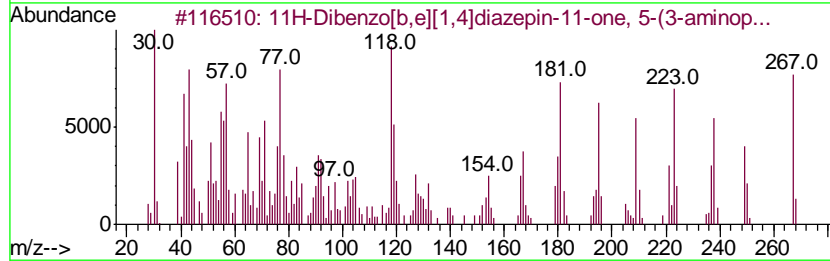
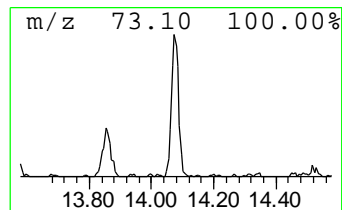
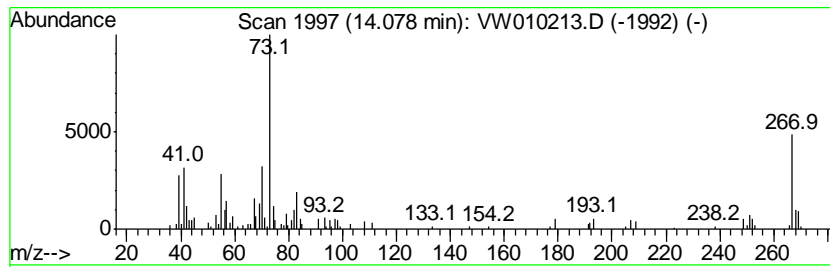
Quant Method : Z:\VOASRV\HPCHEM1\MSVOA_W\METHOD\SOM2WLM042919S.M
 Quant Title : VOC Analysis

TIC Library : C:\DATABASE\NIST11.L
 TIC Integration Parameters: LSCINT.P

 Peak Number 5 unknown-01 Concentration Rank 5

R.T.	EstConc	Area	Relative to ISTD	R.T.
14.08	1.30 ug/L	51302	1,4-Dichlorobenzene-d4	13.56

Hit#	of	Tentative ID	MW	MolForm	CAS#	Qual
1	5	11H-Dibenzo[b,e][1,4]diazepin-11...	267	C16H17N3O	013450-73-2	25
2		Benzoic acid, 2-[(trimethylsilyl)...	282	C13H22O3Si2	003789-85-3	23
3		Benzeneethanamine, N-[(pentafluo...	475	C21H26F5NO2Si2	055429-85-1	23
4		3-Octanol, 3,7-dimethyl-	158	C10H22O	000078-69-3	12
5		1-Boraindane, 3-methyl-1-[1-(tri...	266	C17H23BSi	190316-36-0	10



Data Path : Z:\VOASRV\HPCHEM1\MSVOA_W\DATA\VW042919\
Data File : VW010213.D
Acq On : 30 Apr 2019 11:05
Operator : SY/VA
Sample : K2606-04
Misc : 5.14G/10ML/MSVOA_W/SOIL
ALS Vial : 1 Sample Multiplier: 1

Instrument :
MSVOA_W
ClientSampleId :
A5138

Quant Method : Z:\VOASRV\HPCHEM1\MSVOA_W\METHOD\SOM2WLM042919S.M
Quant Title : VOC Analysis

TIC Library : C:\DATABASE\NIST11.L
TIC Integration Parameters: LSCINT.P

TIC Top Hit name	RT	EstConc	Units	Response	--Internal Standard--			
					#	RT	Resp	Conc
Pentanal	9.41	2.0	ug/L	119385	1	8.84	1488050	25.0
Hexanal	11.07	13.2	ug/L	735861	2	11.63	1389330	25.0
unknown-01	14.08	1.3	ug/L	51302	3	13.56	987147	25.0