

Data Path : Z:\voasrv\HPCHEM1\MSVOA_W\Data\VW050124\
 Data File : VW028554.D
 Acq On : 01 May 2024 10:01
 Operator : SY/MD
 Sample : VW0501SBL01
 Mi sc : 5.00g/10mL/MSVOA_W/SOIL
 ALS Vial : 1 Sample Multiplier: 1

Instrument :
 MSVOA_W
 ClientSampleId :

Quant Time: May 02 02:19:49 2024
 Quant Method : Z:\voasrv\HPCHEM1\MSVOA_W\Method\SFAMWLM040824SMA.M
 Quant Title : SFAM01.0
 QLast Update : Thu May 02 02:18:04 2024
 Response via : Initial Calibration

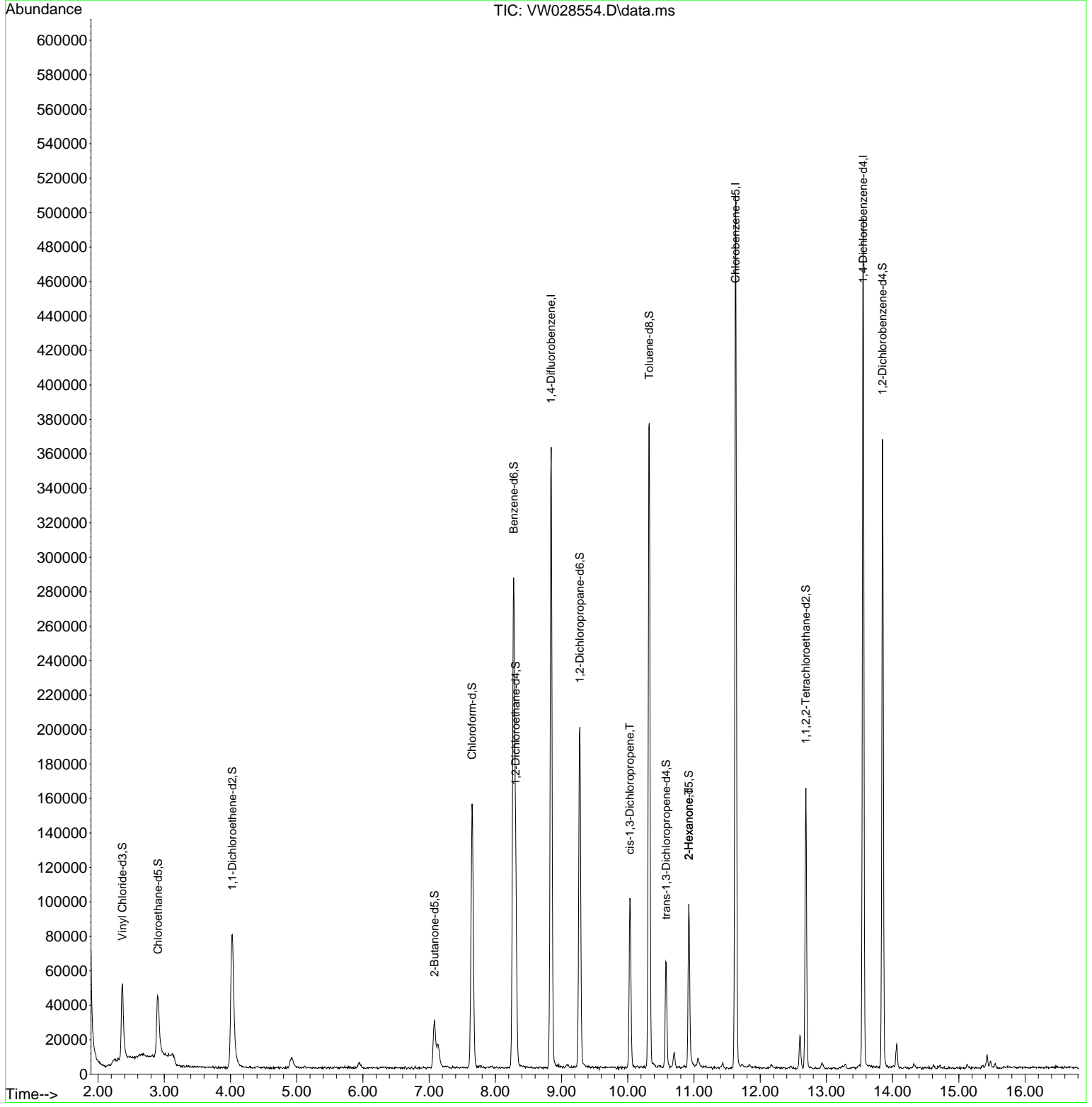
Compound	R. T.	QI on	Response	Conc	Units	Dev(Min)
Internal Standards						
1) 1,4-Difluorobenzene	8.843	114	279777	25.000	ug/L	0.00
28) Chlorobenzene-d5	11.629	117	256329	25.000	ug/L	0.00
58) 1,4-Dichlorobenzene-d4	13.556	152	110731	25.000	ug/L	0.00
System Monitoring Compounds						
4) Vinyl Chloride-d3	2.369	65	66377	14.799	ug/L	0.00
Spike Amount	25.000	Range	30 - 150	Recovery	=	59.200%
7) Chloroethane-d5	2.905	69	58041	17.073	ug/L	0.00
Spike Amount	25.000	Range	30 - 150	Recovery	=	68.280%
11) 1,1-Dichloroethane-d2	4.027	65	31598	16.636	ug/L	0.00
Spike Amount	25.000	Range	45 - 110	Recovery	=	66.560%
21) 2-Butanone-d5	7.081	46	46609	55.532	ug/L	0.00
Spike Amount	50.000	Range	20 - 135	Recovery	=	111.060%
24) Chloroform-d	7.648	84	150237	20.579	ug/L	0.00
Spike Amount	25.000	Range	40 - 150	Recovery	=	82.320%
26) 1,2-Dichloroethane-d4	8.307	65	87097	22.957	ug/L	0.00
Spike Amount	25.000	Range	70 - 130	Recovery	=	91.840%
32) Benzene-d6	8.276	84	281823	20.126	ug/L	0.00
Spike Amount	25.000	Range	20 - 135	Recovery	=	80.520%
36) 1,2-Dichloropropane-d6	9.276	67	89276	21.449	ug/L	0.00
Spike Amount	25.000	Range	70 - 120	Recovery	=	85.800%
41) Toluene-d8	10.325	98	242533	19.047	ug/L	0.00
Spike Amount	25.000	Range	30 - 130	Recovery	=	76.200%
43) trans-1,3-Dichloropropene	10.581	79	33302	20.121	ug/L	0.00
Spike Amount	25.000	Range	30 - 135	Recovery	=	80.480%
47) 2-Hexanone-d5	10.922	63	31162	54.048	ug/L	0.00
Spike Amount	50.000	Range	20 - 135	Recovery	=	108.100%
56) 1,1,2,2-Tetrachloroethane	12.690	84	78278	26.655	ug/L	0.00
Spike Amount	25.000	Range	45 - 120	Recovery	=	106.640%
66) 1,2-Dichlorobenzene-d4	13.848	152	78557	22.433	ug/L	0.00
Spike Amount	25.000	Range	75 - 120	Recovery	=	89.720%
Target Compounds						
39) cis-1,3-Dichloropropene	10.032	75	2615	0.427	ug/L #	72
48) 2-Hexanone	10.922	43	5134	3.093	ug/L #	72

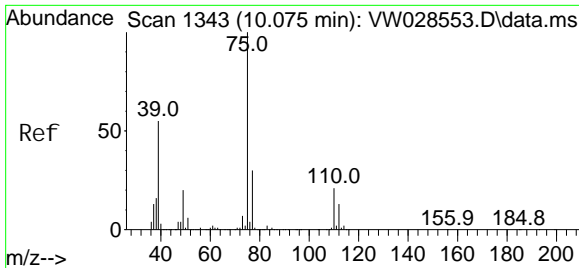
(#) = qualifier out of range (m) = manual integration (+) = signals summed

Data Path : Z:\voasrv\HPCHEM1\MSVOA_W\Data\VW050124\
 Data File : VW028554.D
 Acq On : 01 May 2024 10:01
 Operator : SY/MD
 Sample : VW0501SBL01
 Misc : 5.00g/10mL/MSVOA_W/SOIL
 ALS Vial : 1 Sample Multiplier: 1

Instrument :
 MSVOA_W
ClientSampleId :

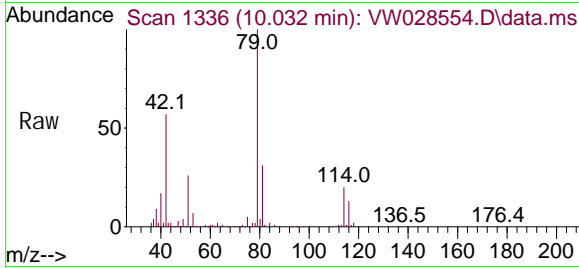
Quant Time: May 02 02:19:49 2024
 Quant Method : Z:\voasrv\HPCHEM1\MSVOA_W\Method\SFAMWLM040824SMA.M
 Quant Title : SFAM01.0
 QLast Update : Thu May 02 02:18:04 2024
 Response via : Initial Calibration



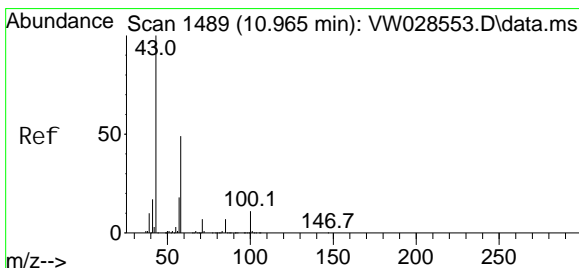
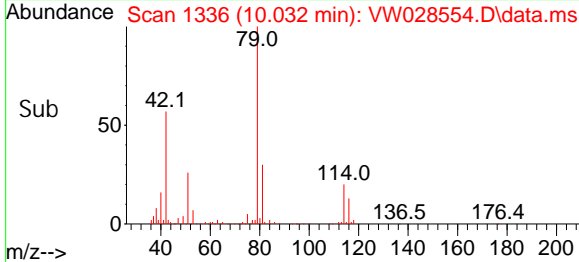
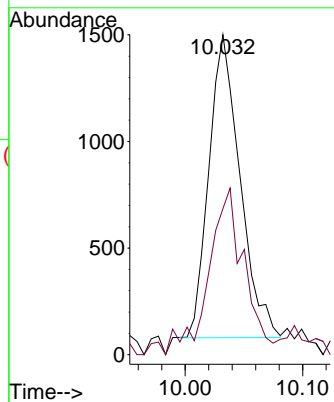


#39
 cis-1,3-Dichloropropene
 Concen: 0.427 ug/L
 RT: 10.032 min Scan# 11
 Delta R.T. -0.043 min
 Lab File: VW028554.D
 Acq: 01 May 2024 10:01

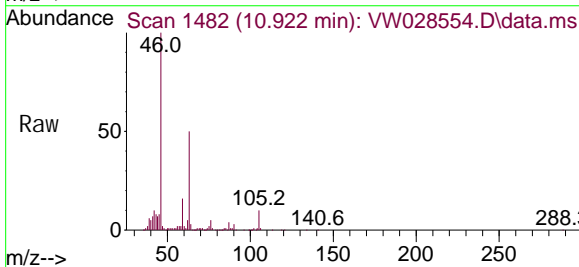
Instrument :
 MSVOA_W
 ClientSampleId :



Tgt Ion: 75 Resp: 2615
 Ion Ratio Lower Upper
 75 100
 77 45.6 21.3 39.5#



#48
 2-Hexanone
 Concen: 3.093 ug/L
 RT: 10.922 min Scan# 1482
 Delta R.T. -0.043 min
 Lab File: VW028554.D
 Acq: 01 May 2024 10:01



Tgt Ion: 43 Resp: 5134
 Ion Ratio Lower Upper
 43 100
 58 28.3 38.9 58.3#
 57 31.5 14.4 21.6#
 100 4.0 8.7 13.1#

