

Data Path : Z:\voasrv\HPCHEM1\MSVOA\_W\Data\VW050222\  
 Data File : VW022745.D  
 Acq On : 02 May 2022 17:28  
 Operator : SY/VA  
 Sample : N2639-03  
 Misc : 5.29g/10mL/MSVOA\_W/SOIL  
 ALS Vial : 1 Sample Multiplier: 1

Instrument :  
 MSVOA\_W  
 ClientSampleId :  
 EXKZ9

Integration Parameters: LSCINT.P

Integrator: RTE  
 Smoothing : OFF  
 Sampling : 1  
 Start Thrs: 0.2  
 Stop Thrs : 0

Filtering: 5  
 Min Area: 0 % of largest Peak  
 Max Peaks: 100  
 Peak Location: TOP

If leading or trailing edge < 100 prefer < Baseline drop else tangent >  
 Peak separation: 5

Method : Z:\voasrv\HPCHEM1\MSVOA\_W\Method\SFAMWLM050222SMA.M  
 Title : SFAM01.0

Signal : TIC: VW022745.D\data.ms

peak #	R.T. min	first scan	max scan	last scan	PK TY	peak height	corr. area	corr. % max.	% of total
1	2.160	37	42	44	rBV6	3800	7050	0.49%	0.067%
2	2.349	68	73	83	rVB	178892	289943	20.25%	2.750%
3	2.885	155	161	172	rVB	92634	193929	13.55%	1.839%
4	3.330	230	234	236	rBV5	1088	1630	0.11%	0.015%
5	3.507	259	263	264	rBV2	1471	1387	0.10%	0.013%
6	3.611	278	280	282	rBV3	1426	1115	0.08%	0.011%
7	3.849	317	319	322	rBV4	1259	1555	0.11%	0.015%
8	3.916	329	330	333	rBV3	799	945	0.07%	0.009%
9	4.019	337	347	360	rVV	168185	495063	34.58%	4.695%
10	4.385	405	407	408	rBV2	1262	866	0.06%	0.008%
11	4.483	420	423	425	rBV2	1133	1243	0.09%	0.012%
12	4.720	461	462	466	rBV3	1296	1387	0.10%	0.013%
13	4.757	466	468	471	rVV3	995	948	0.07%	0.009%
14	4.818	476	478	479	rVB2	1171	849	0.06%	0.008%
15	4.928	486	496	500	rBV5	7230	21579	1.51%	0.205%
16	5.141	529	531	534	rVB3	1494	1180	0.08%	0.011%
17	5.251	548	549	552	rBV3	1560	1929	0.13%	0.018%
18	5.300	555	557	561	rBV3	1215	1589	0.11%	0.015%
19	5.397	571	573	575	rBV2	1298	949	0.07%	0.009%
20	5.482	585	587	590	rBV3	789	1032	0.07%	0.010%
21	5.604	604	607	608	rBV3	1618	1381	0.10%	0.013%
22	5.763	630	633	635	rBV3	1486	1826	0.13%	0.017%
23	5.818	641	642	644	rBV	1147	944	0.07%	0.009%
24	5.873	647	651	653	rBV5	1159	2042	0.14%	0.019%
25	5.940	654	662	664	rBV8	4234	7976	0.56%	0.076%
26	6.068	681	683	686	rVB3	1050	895	0.06%	0.008%
27	6.129	691	693	695	rBV3	946	811	0.06%	0.008%
28	6.305	718	722	724	rBV2	1472	1378	0.10%	0.013%
29	6.720	789	790	793	rVV2	1254	949	0.07%	0.009%
30	6.775	797	799	801	rBV2	1229	1151	0.08%	0.011%
31	6.872	813	815	817	rBV3	1522	1678	0.12%	0.016%
32	7.080	841	849	856	rBV	43339	119335	8.34%	1.132%
33	7.439	906	908	911	rVB3	1299	989	0.07%	0.009%
34	7.647	932	942	956	rVB	243247	604685	42.24%	5.735%
35	7.744	956	958	960	rBV3	1273	1208	0.08%	0.011%
36	7.860	975	977	978	rBV	1550	1028	0.07%	0.010%

Data Path : Z:\voasrv\HPCHEM1\MSVOA\_W\Data\VW050222\  
 Data File : VW022745.D  
 Acq On : 02 May 2022 17:28  
 Operator : SY/VA  
 Sample : N2639-03  
 Misc : 5.29g/10mL/MSVOA\_W/SOIL  
 ALS Vial : 1 Sample Multiplier: 1

Instrument :  
 MSVOA\_W  
 ClientSampleId :  
 EXKZ9

Integration Parameters: LSCINT.P

Integrator: RTE  
 Smoothing : OFF  
 Sampling : 1  
 Start Thrs: 0.2  
 Stop Thrs : 0

Filtering: 5  
 Min Area: 0 % of largest Peak  
 Max Peaks: 100  
 Peak Location: TOP

If leading or trailing edge < 100 prefer < Baseline drop else tangent >  
 Peak separation: 5

Method : Z:\voasrv\HPCHEM1\MSVOA\_W\Method\SFAMWLM050222SMA.M  
 Title : SFAM01.0

37	8.049	1007	1008	1011	rVB2	1208	908	0.06%	0.009%
38	8.147	1021	1024	1026	rBV3	910	847	0.06%	0.008%
39	8.177	1026	1029	1032	rBV4	854	1186	0.08%	0.011%
40	8.275	1035	1045	1061	rBV2	471836	1431481	100.00%	13.576%
41	8.622	1100	1102	1106	rVB5	1999	1899	0.13%	0.018%
42	8.695	1111	1114	1116	rBV2	2170	2317	0.16%	0.022%
43	8.842	1130	1138	1150	rBV	402003	806770	56.36%	7.651%
44	9.073	1172	1176	1184	rVB7	4681	10119	0.71%	0.096%
45	9.165	1188	1191	1192	rVB2	910	793	0.06%	0.008%
46	9.177	1192	1193	1194	rBV	1863	939	0.07%	0.009%
47	9.274	1201	1209	1219	rBV	321502	645748	45.11%	6.124%
48	9.506	1245	1247	1249	rBV3	977	1017	0.07%	0.010%
49	9.591	1258	1261	1264	rVB4	1220	1442	0.10%	0.014%
50	9.701	1278	1279	1282	rBV2	1219	823	0.06%	0.008%
51	9.854	1301	1304	1306	rBV3	992	1381	0.10%	0.013%
52	9.878	1306	1308	1310	rVB3	994	842	0.06%	0.008%
53	9.939	1315	1318	1320	rBV3	1431	1622	0.11%	0.015%
54	9.982	1322	1325	1327	rBV4	831	1173	0.08%	0.011%
55	10.037	1327	1334	1344	rVV	177295	321273	22.44%	3.047%
56	10.171	1353	1356	1359	rBV4	1266	1625	0.11%	0.015%
57	10.323	1373	1381	1388	rBV	703506	1240936	86.69%	11.769%
58	10.579	1416	1423	1431	rBV	114428	199958	13.97%	1.896%
59	10.811	1457	1461	1462	rBV4	880	1156	0.08%	0.011%
60	10.860	1462	1469	1474	rVV2	58017	107235	7.49%	1.017%
61	10.921	1474	1479	1492	rVB	170800	298000	20.82%	2.826%
62	11.152	1515	1517	1519	rBV3	1154	1011	0.07%	0.010%
63	11.238	1530	1531	1533	rBV2	1015	776	0.05%	0.007%
64	11.359	1550	1551	1559	rBV5	950	1517	0.11%	0.014%
65	11.512	1574	1576	1578	rVB	1143	894	0.06%	0.008%
66	11.536	1578	1580	1582	rBV3	857	774	0.05%	0.007%
67	11.555	1582	1583	1587	rBV3	1386	2077	0.15%	0.020%
68	11.628	1587	1595	1604	rBV	600670	1024383	71.56%	9.715%
69	11.792	1620	1622	1623	rBV2	1439	1070	0.07%	0.010%
70	11.841	1623	1630	1635	rVV9	2652	6350	0.44%	0.060%
71	11.884	1635	1637	1640	rVB3	1361	1236	0.09%	0.012%
72	12.054	1663	1665	1666	rBV2	1138	811	0.06%	0.008%
73	12.158	1680	1682	1683	rBV2	1330	1073	0.07%	0.010%
74	12.469	1730	1733	1734	rBV2	1340	1480	0.10%	0.014%
75	12.585	1747	1752	1761	rBV5	6600	14207	0.99%	0.135%
76	12.688	1762	1769	1777	rBV	276148	460065	32.14%	4.363%

Data Path : Z:\voasrv\HPCHEM1\MSVOA\_W\Data\VW050222\  
 Data File : VW022745.D  
 Acq On : 02 May 2022 17:28  
 Operator : SY/VA  
 Sample : N2639-03  
 Misc : 5.29g/10mL/MSVOA\_W/SOIL  
 ALS Vial : 1 Sample Multiplier: 1

Instrument :  
 MSVOA\_W  
 ClientSampleId :  
 EXKZ9

Integration Parameters: LSCINT.P

Integrator: RTE  
 Smoothing : OFF Filtering: 5  
 Sampling : 1 Min Area: 0 % of largest Peak  
 Start Thrs: 0.2 Max Peaks: 100  
 Stop Thrs : 0 Peak Location: TOP

If leading or trailing edge < 100 prefer < Baseline drop else tangent >  
 Peak separation: 5

Method : Z:\voasrv\HPCHEM1\MSVOA\_W\Method\SFAMWLM050222SMA.M  
 Title : SFAM01.0

77	12.786	1783	1785	1787	rBV3	1536	1317	0.09%	0.012%
78	12.859	1795	1797	1798	rBV2	1564	1311	0.09%	0.012%
79	12.884	1800	1801	1803	rVV2	1512	1018	0.07%	0.010%
80	13.085	1831	1834	1835	rBV3	1485	1483	0.10%	0.014%
81	13.469	1893	1897	1899	rBV5	1654	2239	0.16%	0.021%
82	13.554	1903	1911	1919	rBV	659273	1073022	74.96%	10.176%
83	13.853	1951	1960	1971	rBV	611852	1031114	72.03%	9.779%
84	14.060	1990	1994	2000	rVB3	7783	15259	1.07%	0.145%
85	14.115	2000	2003	2007	rBV6	1365	2673	0.19%	0.025%
86	14.194	2013	2016	2017	rBV2	1149	791	0.06%	0.008%
87	14.322	2030	2037	2043	rBV4	11247	23026	1.61%	0.218%
88	14.761	2108	2109	2113	rBV3	1123	1627	0.11%	0.015%
89	14.895	2129	2131	2134	rBV4	730	935	0.07%	0.009%
90	14.938	2136	2138	2141	rBV2	1196	1653	0.12%	0.016%
91	15.036	2152	2154	2157	rBV3	1298	1052	0.07%	0.010%
92	15.145	2170	2172	2175	rVB4	1368	1114	0.08%	0.011%
93	15.273	2191	2193	2194	rBV2	944	855	0.06%	0.008%
94	15.785	2275	2277	2280	rBV3	1464	1786	0.12%	0.017%
95	15.889	2292	2294	2298	rVB5	1889	2097	0.15%	0.020%
96	16.090	2325	2327	2328	rBV2	1283	976	0.07%	0.009%
97	16.212	2343	2347	2349	rBV4	1183	1805	0.13%	0.017%
98	16.243	2350	2352	2356	rVB5	1446	1655	0.12%	0.016%
99	16.328	2364	2366	2368	rBV3	1213	1193	0.08%	0.011%
100	16.389	2375	2376	2379	rBV2	834	803	0.06%	0.008%

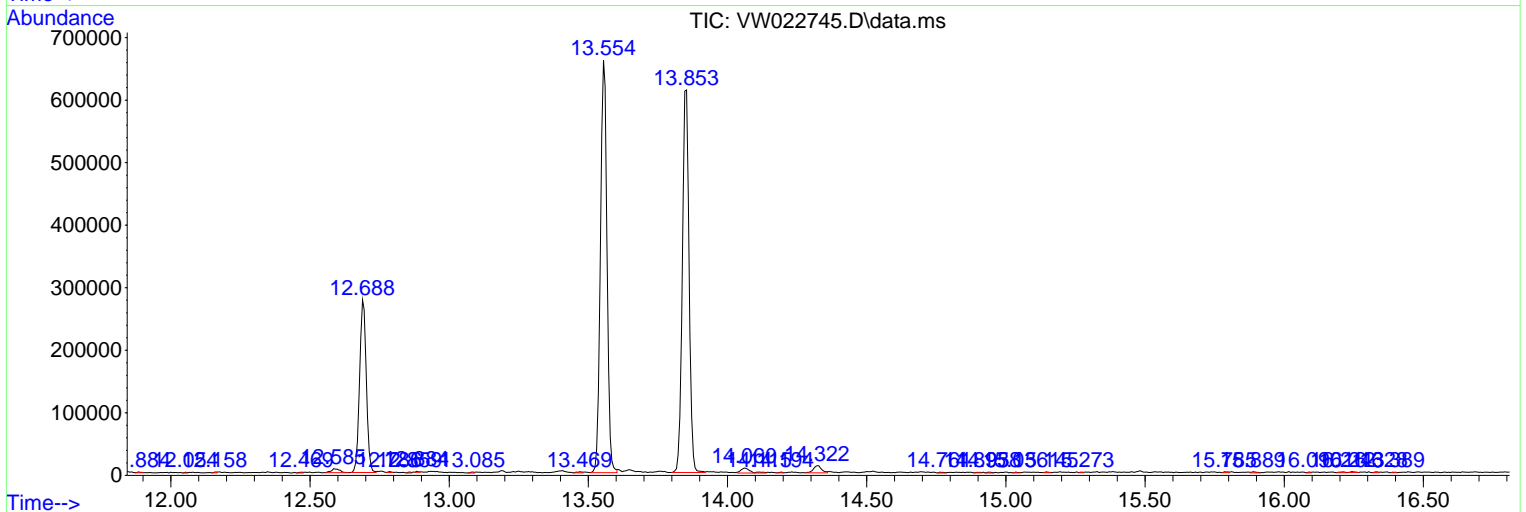
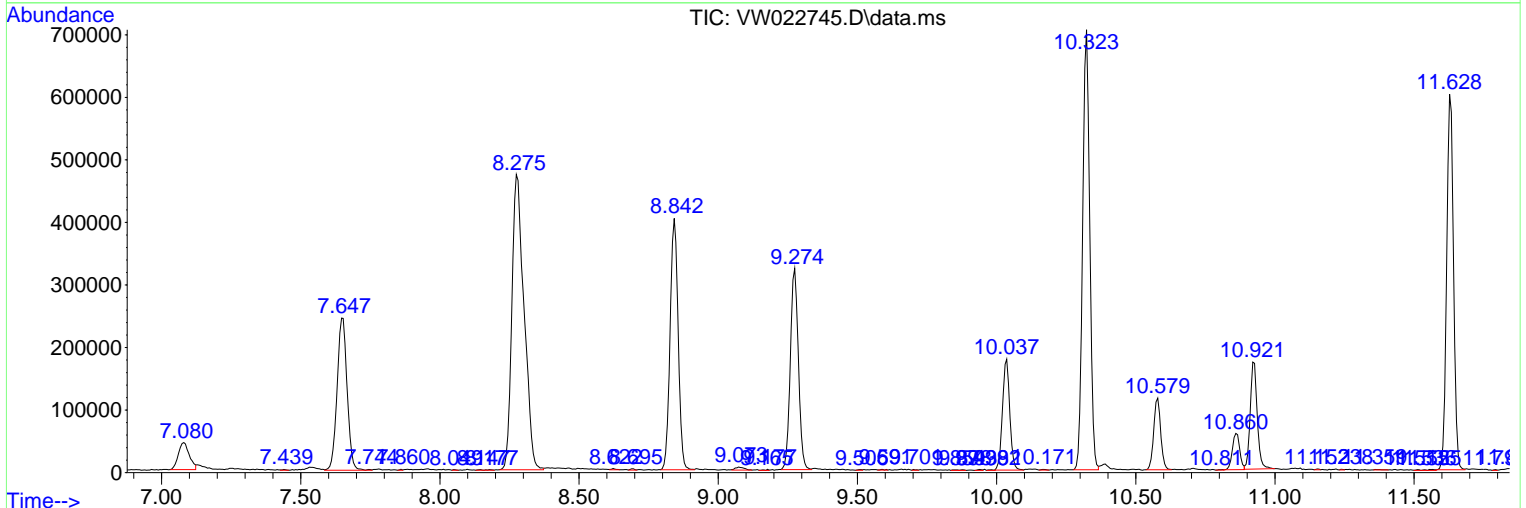
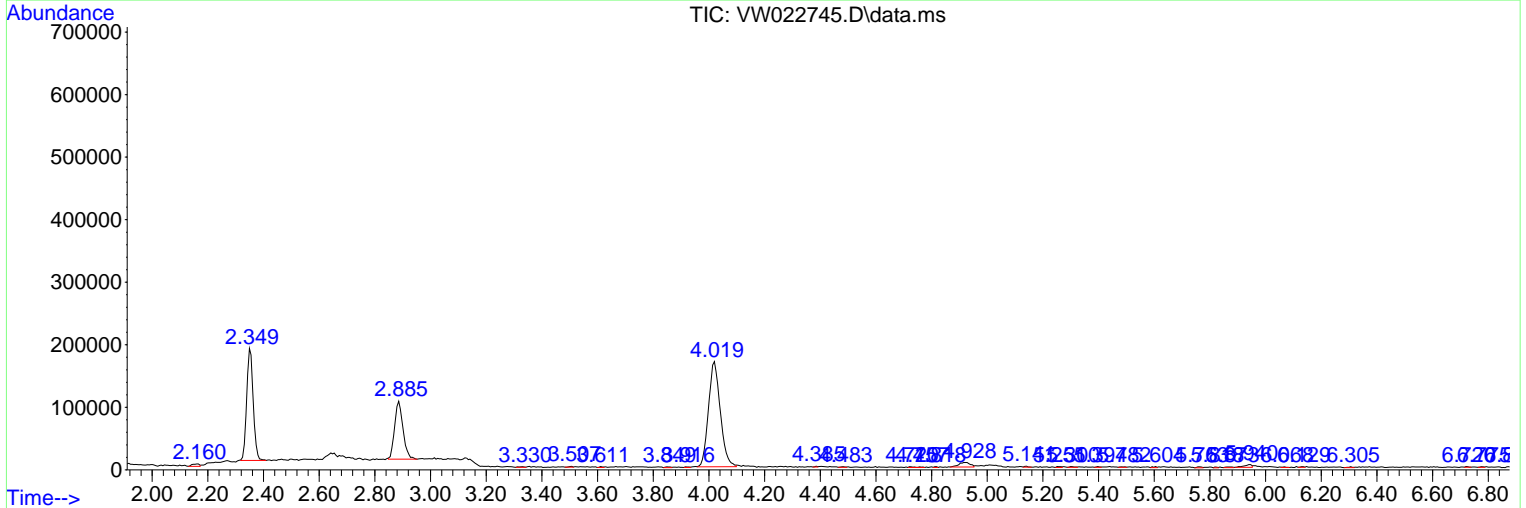
Sum of corrected areas: 10544462

Data Path : Z:\voasrv\HPCHEM1\MSVOA\_W\Data\VW050222\  
 Data File : VW022745.D  
 Acq On : 02 May 2022 17:28  
 Operator : SY/VA  
 Sample : N2639-03  
 Misc : 5.29g/10mL/MSVOA\_W/SOIL  
 ALS Vial : 1 Sample Multiplier: 1

Instrument :  
 MSVOA\_W  
 ClientSampleId :  
 EXKZ9

Quant Method : Z:\voasrv\HPCHEM1\MSVOA\_W\Method\SFAMWLM050222SMA.M  
 Quant Title : SFAM01.0

TIC Library : C:\Database\NIST20.L  
 TIC Integration Parameters: LSCINT.P



Data Path : Z:\voasrv\HPCHEM1\MSVOA\_W\Data\VW050222\  
Data File : VW022745.D  
Acq On : 02 May 2022 17:28  
Operator : SY/VA  
Sample : N2639-03  
Misc : 5.29g/10mL/MSVOA\_W/SOIL  
ALS Vial : 1 Sample Multiplier: 1

**Instrument :**  
MSVOA\_W  
**ClientSampleId :**  
EXKZ9

Quant Method : Z:\voasrv\HPCHEM1\MSVOA\_W\Method\SFAMWLM050222SMA.M  
Quant Title : SFAM01.0

TIC Library : C:\Database\NIST0.L  
TIC Integration Parameters: LSCINT.P

No Library Search Compounds Detected

\*\*\*\*\*

Data Path : Z:\voasrv\HPCHEM1\MSVOA\_W\Data\VW050222\  
Data File : VW022745.D  
Acq On : 02 May 2022 17:28  
Operator : SY/VA  
Sample : N2639-03  
Misc : 5.29g/10mL/MSVOA\_W/SOIL  
ALS Vial : 1 Sample Multiplier: 1

Instrument :  
MSVOA\_W  
ClientSampleId :  
EXKZ9

Quant Method : Z:\voasrv\HPCHEM1\MSVOA\_W\Method\SFAMWLM050222SMA.M  
Quant Title : SFAM01.0

TIC Library : C:\Database\NIST0.L  
TIC Integration Parameters: LSCINT.P

TIC Top Hit name	RT	EstConc	Units	Response	--Internal Standard--			
					#	RT	Resp	Conc

---