

Data Path : Z:\voasrv\HPCHEM1\MSVOA_W\Data\VW050421\
 Data File : VW018925.D
 Acq On : 04 May 2021 17:56
 Operator : SY/VA
 Sample : M2272-07
 Misc : 5.17G/10ML/MSVOA_W/SOIL
 ALS Vial : 14 Sample Multiplier: 1

Instrument :
 MSVOA_W
 ClientSampled :
 EW6C3

Quant Time: May 05 00:08:49 2021
 Quant Method : Z:\voasrv\HPCHEM1\MSVOA_W\Method\SFAMWLM042921SMA.M
 Quant Title : SFAM01.0
 QLast Update : Wed May 05 00:05:43 2021
 Response via : Initial Calibration

Compound	R.T.	QIon	Response	Conc	Units	Dev(Min)

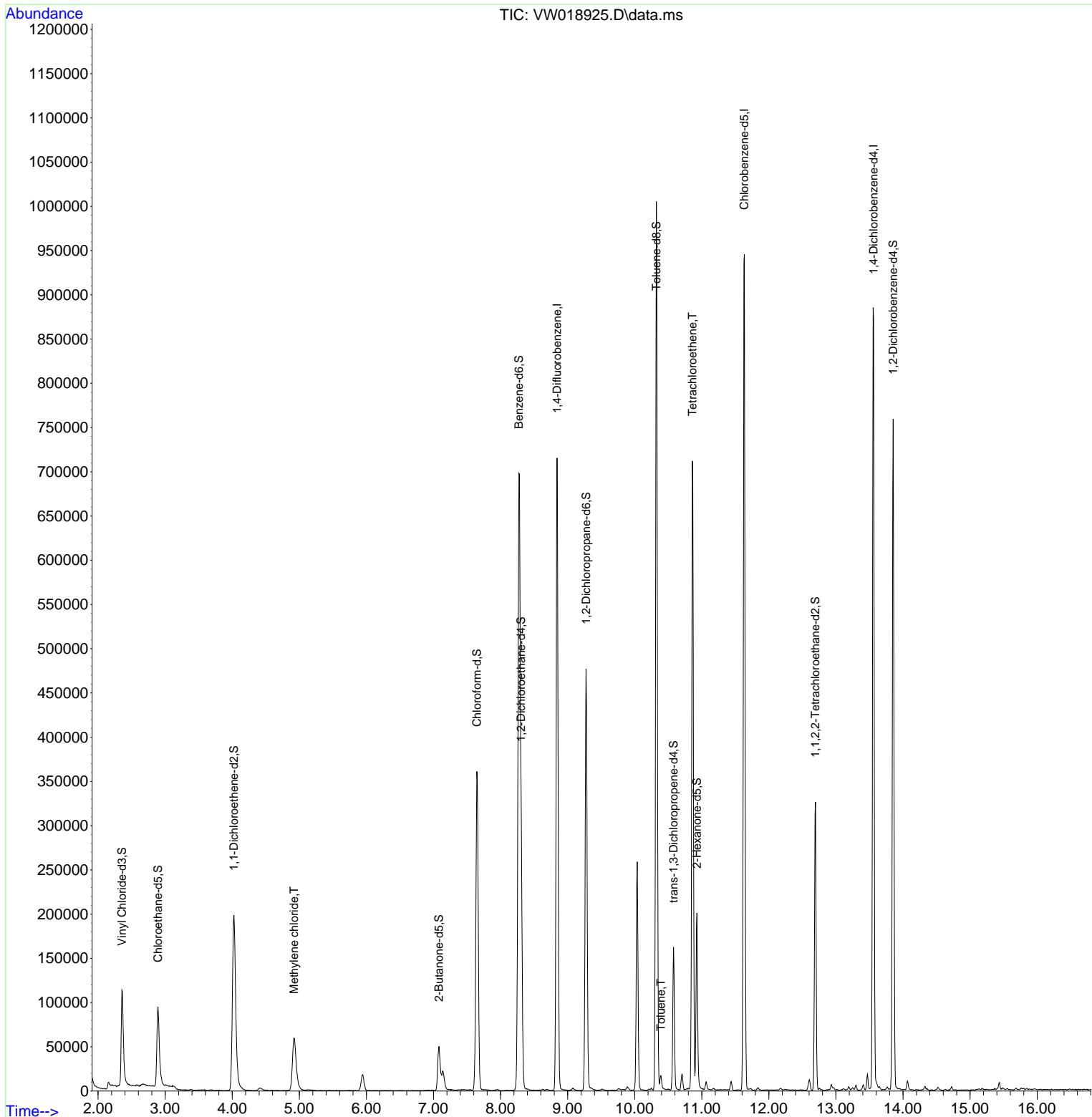
Internal Standards						
1) 1,4-Difluorobenzene	8.842	114	575652	25.00	ug/L	0.00
28) Chlorobenzene-d5	11.634	117	506601	25.00	ug/L	0.00
58) 1,4-Dichlorobenzene-d4	13.560	152	224013	25.00	ug/L	0.00
System Monitoring Compounds						
4) Vinyl Chloride-d3	2.355	65	156965	21.25	ug/L	0.00
Spiked Amount	25.000	Range 30 - 150	Recovery =	85.00%		
7) Chloroethane-d5	2.891	69	126985	22.19	ug/L	0.00
Spiked Amount	25.000	Range 30 - 150	Recovery =	88.76%		
11) 1,1-Dichloroethene-d2	4.025	63	246311	16.80	ug/L	0.00
Spiked Amount	25.000	Range 45 - 110	Recovery =	67.20%		
21) 2-Butanone-d5	7.080	46	81089	42.16	ug/L	0.00
Spiked Amount	50.000	Range 20 - 135	Recovery =	84.32%		
24) Chloroform-d	7.647	84	361997	23.96	ug/L	0.00
Spiked Amount	25.000	Range 40 - 150	Recovery =	95.84%		
26) 1,2-Dichloroethane-d4	8.305	65	202924	24.04	ug/L	0.00
Spiked Amount	25.000	Range 70 - 130	Recovery =	96.16%		
32) Benzene-d6	8.275	84	716449	25.03	ug/L	0.00
Spiked Amount	25.000	Range 20 - 135	Recovery =	100.12%		
36) 1,2-Dichloropropane-d6	9.274	67	213613	25.16	ug/L	0.00
Spiked Amount	25.000	Range 70 - 120	Recovery =	100.64%		
41) Toluene-d8	10.323	98	650024	24.35	ug/L	0.00
Spiked Amount	25.000	Range 30 - 130	Recovery =	97.40%		
43) trans-1,3-Dichloroprop...	10.579	79	85542	22.17	ug/L	0.00
Spiked Amount	25.000	Range 30 - 135	Recovery =	88.68%		
47) 2-Hexanone-d5	10.927	63	68819	45.26	ug/L	0.00
Spiked Amount	50.000	Range 20 - 135	Recovery =	90.52%		
56) 1,1,2,2-Tetrachloroeth...	12.695	84	160825	22.35	ug/L	0.00
Spiked Amount	25.000	Range 45 - 120	Recovery =	89.40%		
66) 1,2-Dichlorobenzene-d4	13.853	152	185812	24.21	ug/L	0.00
Spiked Amount	25.000	Range 75 - 120	Recovery =	96.84%		
Target Compounds						
						Qvalue
16) Methylene chloride	4.922	84	58955	6.19	ug/L	91
42) Toluene	10.390	91	11197	0.34	ug/L	99
46) Tetrachloroethene	10.859	164	145769	23.96	ug/L	96

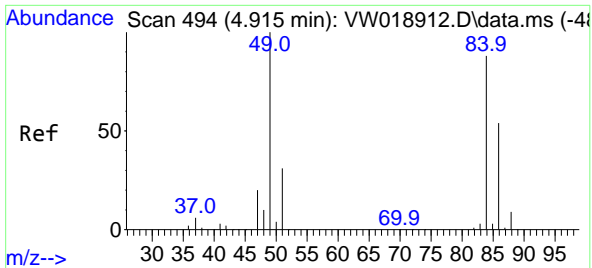
(#) = qualifier out of range (m) = manual integration (+) = signals summed

Data Path : Z:\voasrv\HPCHEM1\MSVOA_W\Data\VW050421\
 Data File : VW018925.D
 Acq On : 04 May 2021 17:56
 Operator : SY/VA
 Sample : M2272-07
 Misc : 5.17G/10ML/MSVOA_W/SOIL
 ALS Vial : 14 Sample Multiplier: 1

Instrument :
 MSVOA_W
 ClientSampled :
 EW6C3

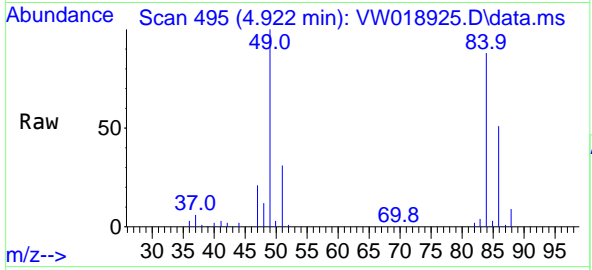
Quant Time: May 05 00:08:49 2021
 Quant Method : Z:\voasrv\HPCHEM1\MSVOA_W\Method\SFAMWLM042921SMA.M
 Quant Title : SFAM01.0
 QLast Update : Wed May 05 00:05:43 2021
 Response via : Initial Calibration





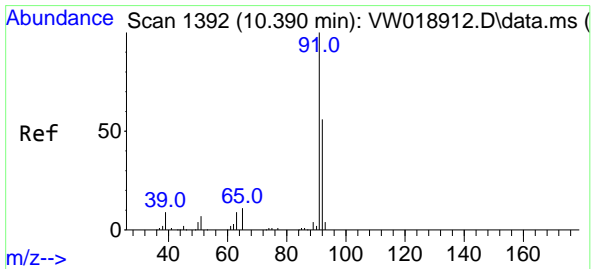
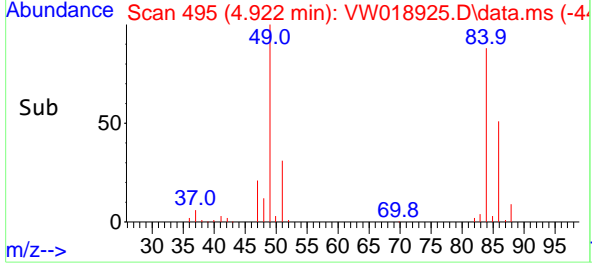
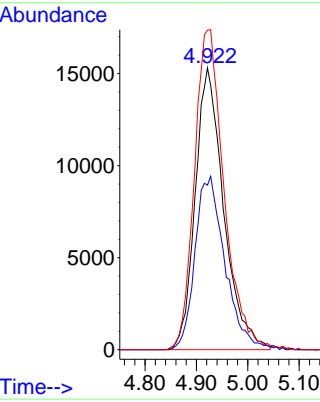
#16
 Methylene chloride
 Concen: 6.19 ug/L
 RT: 4.922 min Scan# 495
 Delta R.T. 0.006 min
 Lab File: VW018925.D
 Acq: 04 May 2021 17:56

Instrument :
 MSVOA_W
 ClientSampled :
 EW6C3



Tgt Ion: 84 Resp: 58955

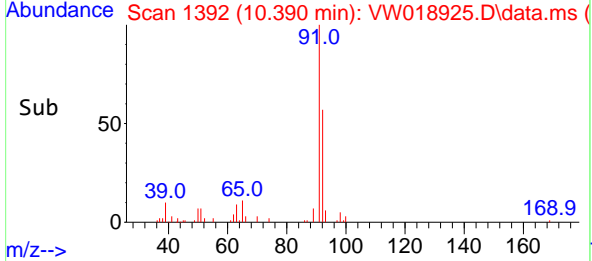
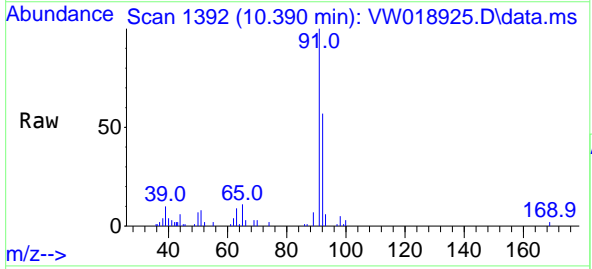
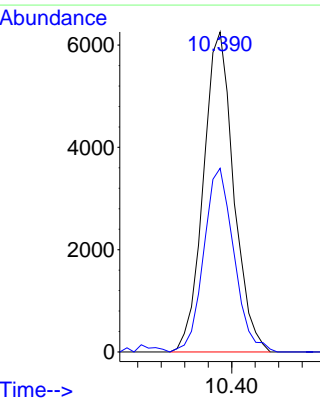
Ion	Ratio	Lower	Upper
84	100		
86	58.4	45.3	84.1
49	113.4	86.6	160.8

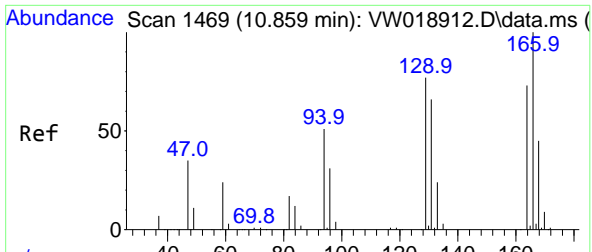


#42
 Toluene
 Concen: 0.34 ug/L
 RT: 10.390 min Scan# 1392
 Delta R.T. 0.000 min
 Lab File: VW018925.D
 Acq: 04 May 2021 17:56

Tgt Ion: 91 Resp: 11197

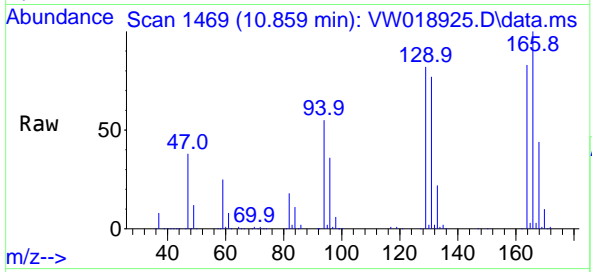
Ion	Ratio	Lower	Upper
91	100		
92	57.4	39.5	73.3





#46
 Tetrachloroethene
 Concen: 23.96 ug/L
 RT: 10.859 min Scan# 1469
 Delta R.T. 0.000 min
 Lab File: VW018925.D
 Acq: 04 May 2021 17:56

Instrument :
 MSVOA_W
 ClientSampled :
 EW6C3



Tgt Ion:164 Resp: 145769

Ion	Ratio	Lower	Upper
164	100		
129	98.6	66.7	123.9
131	92.9	61.1	113.5
166	120.9	87.0	161.6

