

Data Path : Z:\voasrv\HPCHEM1\MSVOA_W\Data\VW050721\
 Data File : VW018955.D
 Acq On : 07 May 2021 14:20
 Operator : SY/VA
 Sample : VIBLK113
 Misc : 5.00G/10ML/MSVOA_W/SOIL
 ALS Vial : 8 Sample Multiplier: 1

Instrument :
 MSVOA_W
 ClientSampled :
 VIBLK113

Integration Parameters: LSCINT.P

Integrator: RTE
 Smoothing : OFF Filtering: 5
 Sampling : 1 Min Area: 0 % of largest Peak
 Start Thrs: 0.2 Max Peaks: 100
 Stop Thrs : 0 Peak Location: TOP

If leading or trailing edge < 100 prefer < Baseline drop else tangent >
 Peak separation: 5

Method : Z:\voasrv\HPCHEM1\MSVOA_W\Method\SFAMWLM042921SMA.M
 Title : SFAM01.0

Signal : TIC: VW018955.D\data.ms

peak #	R.T. min	first scan	max scan	last scan	PK TY	peak height	corr. area	corr. % max.	% of total
1	2.154	37	41	48	rBV	6614	16908	0.74%	0.100%
2	2.355	68	74	84	rVB	127901	242138	10.60%	1.431%
3	2.892	155	162	175	rVB	89357	223044	9.76%	1.318%
4	3.391	238	244	248	rBV4	1753	3481	0.15%	0.021%
5	3.739	299	301	305	rVB2	623	738	0.03%	0.004%
6	4.019	334	347	364	rBV	234085	720190	31.51%	4.256%
7	4.464	407	420	425	rBV3	5252	20643	0.90%	0.122%
8	4.916	482	494	512	rBV2	71980	251091	10.99%	1.484%
9	5.105	522	525	527	rBV3	740	872	0.04%	0.005%
10	5.196	536	540	544	rBV3	865	1641	0.07%	0.010%
11	5.428	572	578	579	rBV2	863	1256	0.05%	0.007%
12	5.745	624	630	631	rBV3	1056	1534	0.07%	0.009%
13	5.763	631	633	639	rVV4	1438	2267	0.10%	0.013%
14	5.940	653	662	674	rVB3	14065	41414	1.81%	0.245%
15	6.988	832	834	839	rVB3	435	663	0.03%	0.004%
16	7.086	841	850	855	rBV2	45722	127458	5.58%	0.753%
17	7.330	888	890	893	rVB2	551	637	0.03%	0.004%
18	7.543	918	925	928	rBV4	967	2104	0.09%	0.012%
19	7.653	930	943	957	rBV	369543	921114	40.31%	5.443%
20	7.878	978	980	984	rVB2	880	836	0.04%	0.005%
21	7.952	988	992	1000	rVB7	1736	3809	0.17%	0.023%
22	8.080	1011	1013	1016	rVB2	788	780	0.03%	0.005%
23	8.275	1032	1045	1064	rBV2	754664	2285338	100.00%	13.504%
24	8.488	1075	1080	1084	rVB6	808	1754	0.08%	0.010%
25	8.525	1084	1086	1089	rVB2	529	608	0.03%	0.004%
26	8.628	1100	1103	1108	rBV2	726	1071	0.05%	0.006%
27	8.683	1110	1112	1114	rBV3	772	872	0.04%	0.005%
28	8.842	1128	1138	1149	rBV	756948	1521794	66.59%	8.992%
29	9.079	1170	1177	1183	rVV8	1960	5266	0.23%	0.031%
30	9.275	1198	1209	1233	rBV	483336	997315	43.64%	5.893%
31	9.470	1237	1241	1246	rVV5	1105	1760	0.08%	0.010%
32	9.653	1268	1271	1273	rBV3	509	584	0.03%	0.003%
33	9.762	1282	1289	1298	rBV2	9350	18135	0.79%	0.107%
34	9.890	1301	1310	1317	rBV	24084	49495	2.17%	0.292%
35	9.988	1324	1326	1327	rBV	1337	1228	0.05%	0.007%
36	10.037	1327	1334	1347	rVB	262529	471140	20.62%	2.784%

Data Path : Z:\voasrv\HPCHEM1\MSVOA_W\Data\VW050721\
 Data File : VW018955.D
 Acq On : 07 May 2021 14:20
 Operator : SY/VA
 Sample : VIBLK113
 Misc : 5.00G/10ML/MSVOA_W/SOIL
 ALS Vial : 8 Sample Multiplier: 1

Instrument :
 MSVOA_W
 ClientSampleId :
 VIBLK113

Integration Parameters: LSCINT.P

Integrator: RTE
 Smoothing : OFF Filtering: 5
 Sampling : 1 Min Area: 0 % of largest Peak
 Start Thrs: 0.2 Max Peaks: 100
 Stop Thrs : 0 Peak Location: TOP

If leading or trailing edge < 100 prefer < Baseline drop else tangent >
 Peak separation: 5

Method : Z:\voasrv\HPCHEM1\MSVOA_W\Method\SFAMWLM042921SMA.M
 Title : SFAM01.0

37	10.146	1350	1352	1355	rVB3	706	644	0.03%	0.004%
38	10.213	1357	1363	1365	rBV3	4459	7486	0.33%	0.044%
39	10.250	1365	1369	1374	rVV	10671	18994	0.83%	0.112%
40	10.323	1374	1381	1388	rVV	1024464	1801383	78.82%	10.644%
41	10.390	1388	1392	1401	rVB	16405	30933	1.35%	0.183%
42	10.506	1409	1411	1415	rVB3	1021	971	0.04%	0.006%
43	10.579	1415	1423	1437	rBV	159444	275937	12.07%	1.630%
44	10.707	1437	1444	1451	rBV	131281	234839	10.28%	1.388%
45	10.774	1451	1455	1460	rVB5	2913	5302	0.23%	0.031%
46	10.854	1462	1468	1474	rBV7	6875	15149	0.66%	0.090%
47	10.927	1474	1480	1491	rBV	184348	311346	13.62%	1.840%
48	11.067	1497	1503	1509	rBV	24345	41472	1.81%	0.245%
49	11.177	1515	1521	1528	rVB3	6608	11927	0.52%	0.070%
50	11.341	1544	1548	1552	rBV	1030	1229	0.05%	0.007%
51	11.439	1552	1564	1573	rVB2	78059	140929	6.17%	0.833%
52	11.634	1585	1596	1605	rBV	1052177	1795098	78.55%	10.607%
53	11.731	1609	1612	1616	rVB2	2368	3511	0.15%	0.021%
54	11.835	1625	1629	1634	rBV2	3578	7350	0.32%	0.043%
55	11.878	1634	1636	1641	rVB5	2324	2856	0.12%	0.017%
56	11.969	1648	1651	1652	rBV3	714	593	0.03%	0.004%
57	12.183	1679	1686	1692	rVB7	2607	6281	0.27%	0.037%
58	12.244	1692	1696	1697	rBV4	1186	1762	0.08%	0.010%
59	12.365	1714	1716	1720	rVB4	590	601	0.03%	0.004%
60	12.463	1728	1732	1737	rBV3	3130	4886	0.21%	0.029%
61	12.506	1737	1739	1743	rVB4	765	792	0.03%	0.005%
62	12.603	1747	1755	1762	rBV3	109294	198687	8.69%	1.174%
63	12.695	1762	1770	1776	rBV	320815	544287	23.82%	3.216%
64	12.756	1776	1780	1789	rVB3	6057	14608	0.64%	0.086%
65	12.859	1794	1797	1802	rBV4	1109	1678	0.07%	0.010%
66	12.932	1802	1809	1811	rBV	15423	22617	0.99%	0.134%
67	12.963	1812	1814	1820	rVV2	18683	27741	1.21%	0.164%
68	13.036	1823	1826	1830	rVB5	3288	4729	0.21%	0.028%
69	13.079	1830	1833	1837	rBV5	3039	4531	0.20%	0.027%
70	13.195	1844	1852	1857	rBV	11484	19796	0.87%	0.117%
71	13.249	1859	1861	1863	rVB2	2461	2035	0.09%	0.012%
72	13.292	1863	1868	1875	rVB2	29166	47231	2.07%	0.279%
73	13.408	1878	1887	1892	rBV3	13158	26493	1.16%	0.157%
74	13.469	1893	1897	1899	rBV4	3337	5208	0.23%	0.031%
75	13.506	1900	1903	1905	rBV4	3467	4716	0.21%	0.028%
76	13.554	1905	1911	1918	rBV	1029597	1679382	73.49%	9.923%

Data Path : Z:\voasrv\HPCHEM1\MSVOA_W\Data\VW050721\
 Data File : VW018955.D
 Acq On : 07 May 2021 14:20
 Operator : SY/VA
 Sample : VIBLK113
 Misc : 5.00G/10ML/MSVOA_W/SOIL
 ALS Vial : 8 Sample Multiplier: 1

Instrument :
 MSVOA_W
 ClientSampleId :
 VIBLK113

Integration Parameters: LSCINT.P

Integrator: RTE
 Smoothing : OFF Filtering: 5
 Sampling : 1 Min Area: 0 % of largest Peak
 Start Thrs: 0.2 Max Peaks: 100
 Stop Thrs : 0 Peak Location: TOP

If leading or trailing edge < 100 prefer < Baseline drop else tangent >
 Peak separation: 5

Method : Z:\voasrv\HPCHEM1\MSVOA_W\Method\SFAMWLM042921SMA.M
 Title : SFAM01.0

77	13.762	1939	1945	1949	rBV3	13989	26185	1.15%	0.155%
78	13.853	1953	1960	1966	rVV	871335	1434815	62.78%	8.478%
79	13.902	1966	1968	1973	rVB3	7644	9917	0.43%	0.059%
80	14.012	1983	1986	1990	rBV4	2364	3983	0.17%	0.024%
81	14.066	1990	1995	2001	rVV2	45988	74899	3.28%	0.443%
82	14.194	2011	2016	2020	rBV2	2376	3581	0.16%	0.021%
83	14.518	2061	2069	2074	rBV7	3779	9156	0.40%	0.054%
84	14.591	2078	2081	2083	rBV4	495	617	0.03%	0.004%
85	14.621	2083	2086	2091	rVB6	2367	3899	0.17%	0.023%
86	14.719	2098	2102	2111	rVB3	5662	9216	0.40%	0.054%
87	14.786	2111	2113	2116	rBV3	690	833	0.04%	0.005%
88	14.975	2142	2144	2148	rVB3	637	606	0.03%	0.004%
89	15.103	2162	2165	2166	rBV3	1313	1366	0.06%	0.008%
90	15.176	2174	2177	2184	rVV5	1752	3031	0.13%	0.018%
91	15.249	2187	2189	2196	rVB6	1618	2842	0.12%	0.017%
92	15.365	2206	2208	2211	rBV4	881	783	0.03%	0.005%
93	15.432	2211	2219	2224	rVV2	30408	51319	2.25%	0.303%
94	15.487	2224	2228	2234	rVB2	4420	8175	0.36%	0.048%
95	15.682	2257	2260	2264	rVB6	2477	3510	0.15%	0.021%
96	15.755	2269	2272	2273	rBV3	2003	2399	0.10%	0.014%
97	15.847	2283	2287	2290	rVB6	2334	2851	0.12%	0.017%
98	16.036	2316	2318	2323	rVB6	664	913	0.04%	0.005%
99	16.194	2342	2344	2345	rBV2	1217	825	0.04%	0.005%
100	16.468	2386	2389	2390	rBV3	699	820	0.04%	0.005%

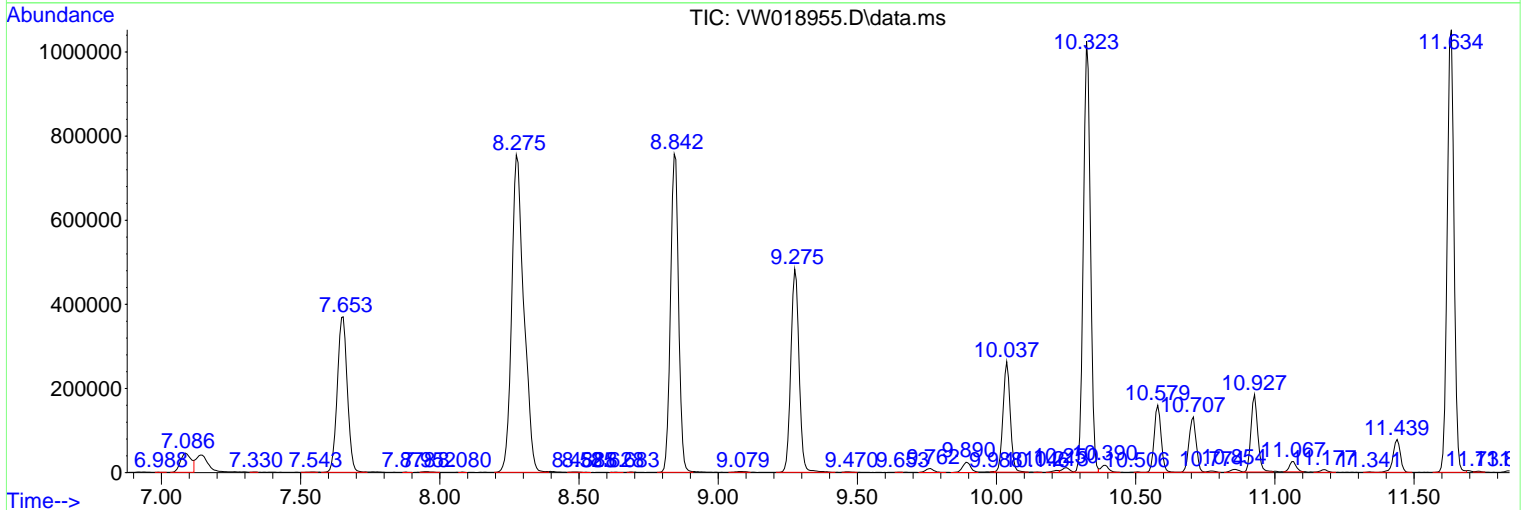
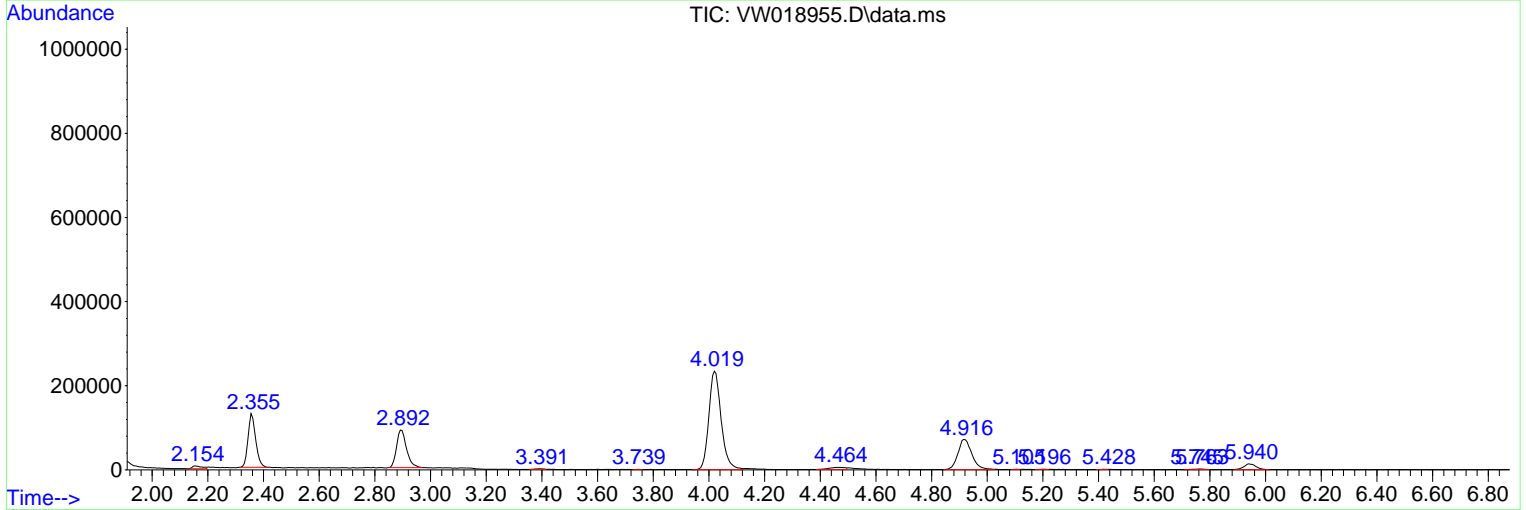
Sum of corrected areas: 16923529

Data Path : Z:\voasrv\HPCHEM1\MSVOA_W\Data\VW050721\
 Data File : VW018955.D
 Acq On : 07 May 2021 14:20
 Operator : SY/VA
 Sample : VIBLK113
 Misc : 5.00G/10ML/MSVOA_W/SOIL
 ALS Vial : 8 Sample Multiplier: 1

Instrument :
 MSVOA_W
Client Sampled :
 VIBLK113

Quant Method : Z:\voasrv\HPCHEM1\MSVOA_W\Method\SFAMWLM042921SMA.M
 Quant Title : SFAM01.0

TIC Library : C:\DATABASE\NIST11.L
 TIC Integration Parameters: LSCINT.P



Library Search Compound Report

Data Path : Z:\voasrv\HPCHEM1\MSVOA_W\Data\VW050721\
Data File : VW018955.D
Acq On : 07 May 2021 14:20
Operator : SY/VA
Sample : VIBLK113
Misc : 5.00G/10ML/MSVOA_W/SOIL
ALS Vial : 8 Sample Multiplier: 1

Instrument :
MSVOA_W
ClientSampleId :
VIBLK113

Quant Method : Z:\voasrv\HPCHEM1\MSVOA_W\Method\SFAMWLM042921SMA.M
Quant Title : SFAM01.0

TIC Library : C:\DATABASE\NIST11.L
TIC Integration Parameters: LSCINT.P

No Library Search Compounds Detected

Data Path : Z:\voasrv\HPCHEM1\MSVOA_W\Data\VW050721\
Data File : VW018955.D
Acq On : 07 May 2021 14:20
Operator : SY/VA
Sample : VIBLK113
Misc : 5.00G/10ML/MSVOA_W/SOIL
ALS Vial : 8 Sample Multiplier: 1

Instrument :
MSVOA_W
ClientSampled :
VIBLK113

Quant Method : Z:\voasrv\HPCHEM1\MSVOA_W\Method\SFAMWLM042921SMA.M
Quant Title : SFAM01.0

TIC Library : C:\DATABASE\NIST11.L
TIC Integration Parameters: LSCINT.P

TIC Top Hit name	RT	EstConc	Units	Response	--Internal Standard--			
					#	RT	Resp	Conc
