

Data Path : Z:\voasrv\HPCHEM1\MSVOA_W\Data\VW050923\
 Data File : VW025913.D
 Acq On : 09 May 2023 17:15
 Operator : SY/MD
 Sample : 02697-02
 Misc : 5.05g/10mL/MSVOA_W/SOIL
 ALS Vial : 1 Sample Multiplier: 1

Instrument :
 MSVOA_W
 ClientSampleId :
 C11E5

Quant Time: May 09 23:21:29 2023
 Quant Method : Z:\voasrv\HPCHEM1\MSVOA_W\Method\SFAMWLM050123SMA.M
 Quant Title : SFAM01.0
 QLast Update : Fri May 05 23:47:36 2023
 Response via : Initial Calibration

Compound	R.T.	QIon	Response	Conc	Units	Dev(Min)

Internal Standards						
1) 1,4-Difluorobenzene	8.843	114	743297	25.000	ug/L	0.00
28) Chlorobenzene-d5	11.629	117	662846	25.000	ug/L	0.00
58) 1,4-Dichlorobenzene-d4	13.556	152	259601	25.000	ug/L	0.00
System Monitoring Compounds						
4) Vinyl Chloride-d3	2.363	65	163650	15.537	ug/L	0.00
Spiked Amount	25.000	Range 30 - 150	Recovery =	62.160%		
7) Chloroethane-d5	2.899	69	140063	17.936	ug/L	0.00
Spiked Amount	25.000	Range 30 - 150	Recovery =	71.760%		
11) 1,1-Dichloroethene-d2	4.021	65	80173	15.201	ug/L	0.00
Spiked Amount	25.000	Range 45 - 110	Recovery =	60.800%		
21) 2-Butanone-d5	7.075	46	183929	52.821	ug/L	0.00
Spiked Amount	50.000	Range 20 - 135	Recovery =	105.640%		
24) Chloroform-d	7.648	84	370507	17.287	ug/L	0.00
Spiked Amount	25.000	Range 40 - 150	Recovery =	69.160%		
26) 1,2-Dichloroethane-d4	8.453	65	111	0.009	ug/L	0.15
Spiked Amount	25.000	Range 70 - 130	Recovery =	0.040%#		
32) Benzene-d6	8.276	84	729607	16.845	ug/L	0.00
Spiked Amount	25.000	Range 20 - 135	Recovery =	67.400%		
36) 1,2-Dichloropropane-d6	9.270	67	255801	18.459	ug/L	0.00
Spiked Amount	25.000	Range 70 - 120	Recovery =	73.840%		
41) Toluene-d8	10.318	98	613554	15.886	ug/L	0.00
Spiked Amount	25.000	Range 30 - 130	Recovery =	63.560%		
43) trans-1,3-Dichloroprop...	10.575	79	101478	18.065	ug/L	0.00
Spiked Amount	25.000	Range 30 - 135	Recovery =	72.280%		
47) 2-Hexanone-d5	10.922	63	120582	51.029	ug/L	0.00
Spiked Amount	50.000	Range 20 - 135	Recovery =	102.060%		
56) 1,1,2,2-Tetrachloroeth...	12.690	84	240806	22.799	ug/L	0.00
Spiked Amount	25.000	Range 45 - 120	Recovery =	91.200%		
66) 1,2-Dichlorobenzene-d4	13.848	152	188512	19.920	ug/L	0.00
Spiked Amount	25.000	Range 75 - 120	Recovery =	79.680%		

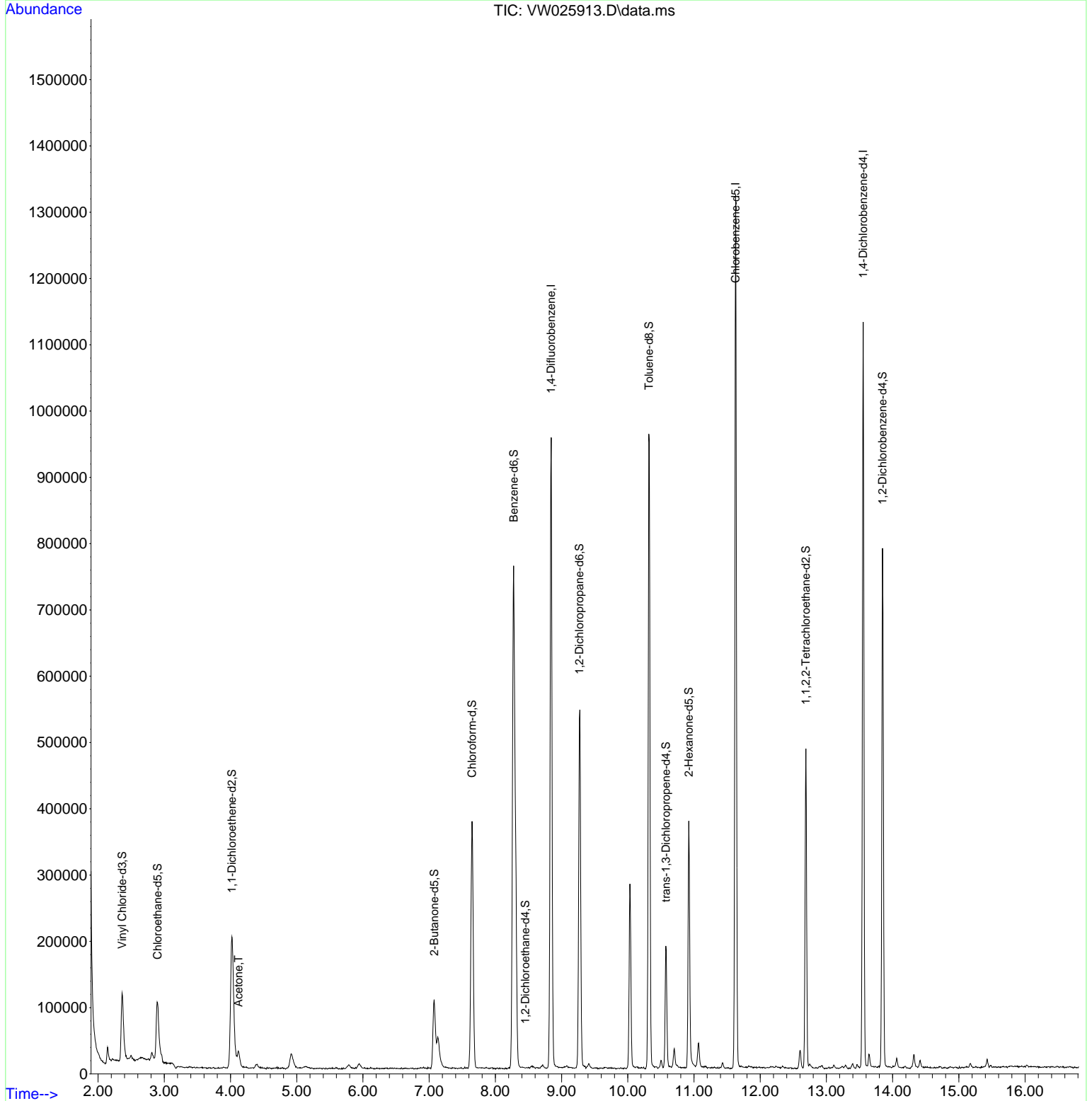
Target Compounds						Qvalue
13) Acetone	4.118	43	39225	12.704	ug/L	98

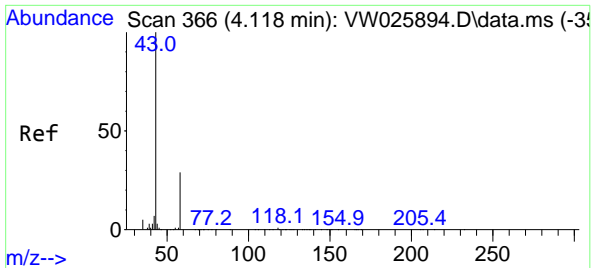
(#) = qualifier out of range (m) = manual integration (+) = signals summed

Data Path : Z:\voasrv\HPCHEM1\MSVOA_W\Data\VW050923\
 Data File : VW025913.D
 Acq On : 09 May 2023 17:15
 Operator : SY/MD
 Sample : 02697-02
 Misc : 5.05g/10mL/MSVOA_W/SOIL
 ALS Vial : 1 Sample Multiplier: 1

Instrument :
 MSVOA_W
 ClientSampleId :
 C11E5

Quant Time: May 09 23:21:29 2023
 Quant Method : Z:\voasrv\HPCHEM1\MSVOA_W\Method\SFAMWLM050123SMA.M
 Quant Title : SFAM01.0
 QLast Update : Fri May 05 23:47:36 2023
 Response via : Initial Calibration





#13
 Acetone
 Concen: 12.704 ug/L
 RT: 4.118 min Scan# 30
 Delta R.T. -0.012 min
 Lab File: VW025913.D
 Acq: 09 May 2023 17:15

Instrument : MSVOA_W
 ClientSampleId : C11E5

Tgt Ion: 43 Resp: 39225
 Ion Ratio Lower Upper
 43 100
 58 30.3 0.0 58.2

