

Data Path : Z:\VOASRV\HPCHEM1\MSVOA W\DATA\VW051019\
 Data File : VW010370.D
 Acq On : 10 May 2019 21:50
 Operator : SY/VA
 Sample : K2718-13
 Misc : 5.27G/5ML/MSVOA W/SOIL
 ALS Vial : 21 Sample Multiplier: 1

Instrument :
 MSVOA_W
 ClientSampleId :
 P026-SS006-0612-01

Integration Parameters: RTEINT.P

Integrator: RTE
 Smoothing : ON Filtering: 5
 Sampling : 1 Min Area: 3 % of largest Peak
 Start Thrs: 0.2 Max Peaks: 100
 Stop Thrs : 0 Peak Location: TOP

If leading or trailing edge < 100 prefer < Baseline drop else tangent >
 Peak separation: 5

Method : Z:\VOASRV\HPCHEM1\MSVOA_W\METHOD\82W050919S.M
 Title : SW846 8260

Signal : TIC

peak #	R.T. min	first scan	max scan	last scan	PK TY	peak height	corr. area	corr. % max.	% of total
1	4.909	482	493	511	rBV2	88469	342229	12.18%	2.143%
2	5.927	648	660	672	rBV3	51583	154116	5.49%	0.965%
3	7.884	970	981	985	rBV	465144	1092037	38.88%	6.838%
4	7.945	985	991	1001	rVB	777095	1684531	59.97%	10.549%
5	8.305	1040	1050	1060	rBV	521362	1156342	41.17%	7.241%
6	8.841	1128	1138	1146	rBV	1323138	2582361	91.94%	16.171%
7	10.323	1372	1381	1389	rBV	1381428	2413432	85.92%	15.113%
8	10.701	1439	1443	1449	rBV2	15828	29595	1.05%	0.185%
9	11.633	1588	1596	1608	rBV	1669096	2808828	100.00%	17.589%
10	11.731	1608	1612	1619	rVB2	17035	32368	1.15%	0.203%
11	12.182	1680	1686	1692	rVB4	17200	30475	1.08%	0.191%
12	12.621	1748	1758	1768	rBV	847378	1394769	49.66%	8.734%
13	13.560	1906	1912	1929	rVB	1290497	2047642	72.90%	12.822%
14	14.072	1992	1996	2002	rVB2	46043	77157	2.75%	0.483%
15	15.444	2212	2221	2226	rBV3	33072	70344	2.50%	0.440%
16	15.499	2226	2230	2246	rVB2	23499	53056	1.89%	0.332%

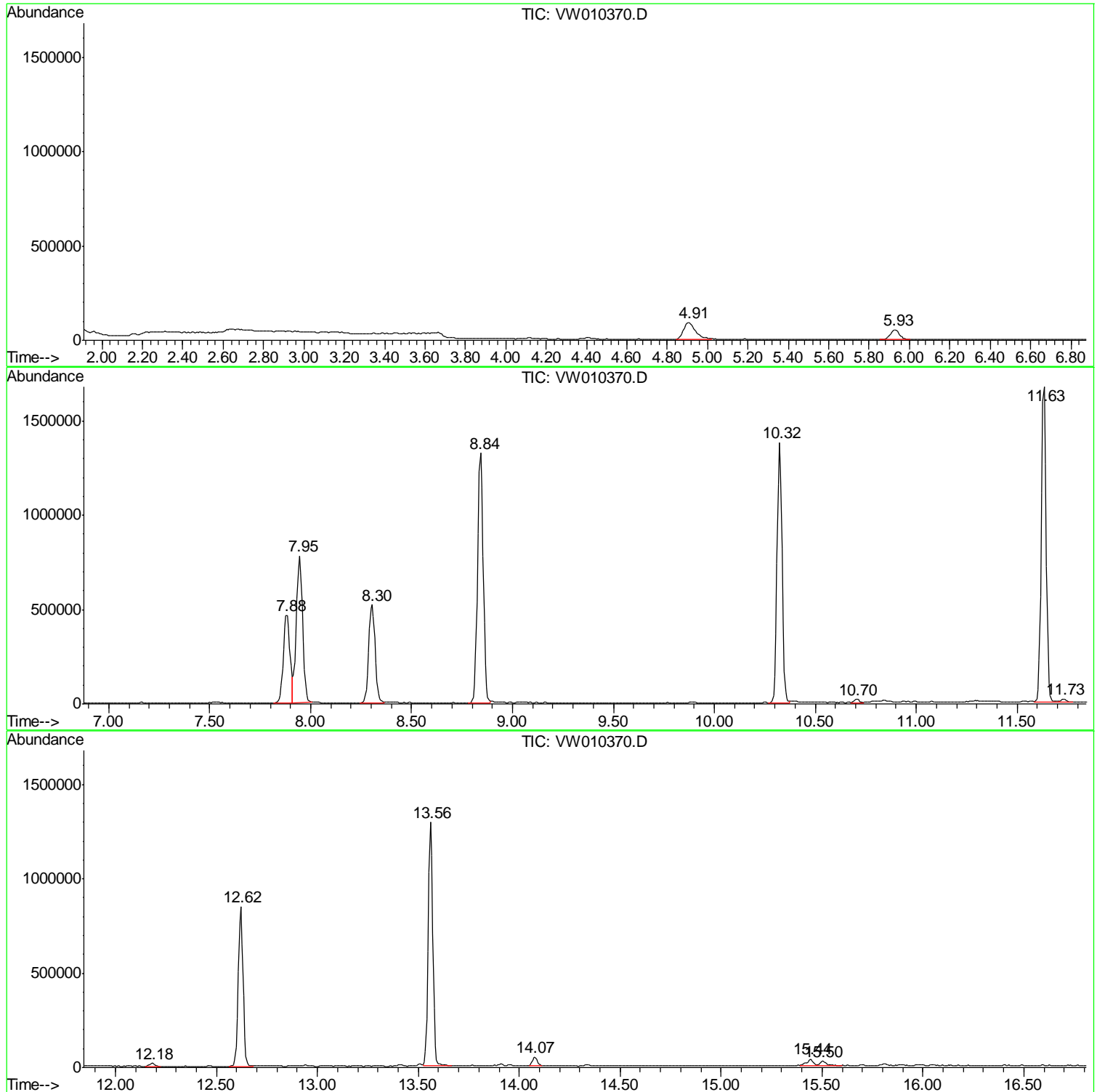
Sum of corrected areas: 15969282

Data Path : Z:\VOASRV\HPCHEM1\MSVOA W\DATA\VW051019\
Data File : VW010370.D
Acq On : 10 May 2019 21:50
Operator : SY/VA
Sample : K2718-13
Misc : 5.27G/5ML/MSVOA W/SOIL
ALS Vial : 21 Sample Multiplier: 1

Instrument :
MSVOA_W
ClientSampleId :
P026-SS006-0612-01

Quant Method : Z:\VOASRV\HPCHEM1\MSVOA_W\METHOD\82W050919S.M
Quant Title : SW846 8260

TIC Library : C:\DATABASE\NIST11.L
TIC Integration Parameters: LSCINT.P



Data Path : Z:\VOASRV\HPCHEM1\MSVOA_W\DATA\VW051019\
Data File : VW010370.D
Acq On : 10 May 2019 21:50
Operator : SY/VA
Sample : K2718-13
Misc : 5.27G/5ML/MSVOA_W/SOIL
ALS Vial : 21 Sample Multiplier: 1

Instrument :
MSVOA_W
ClientSampleId :
P026-SS006-0612-01

Quant Method : Z:\VOASRV\HPCHEM1\MSVOA_W\METHOD\82W050919S.M
Quant Title : SW846 8260

TIC Library : C:\DATABASE\NIST11.L
TIC Integration Parameters: LSCINT.P

No Library Search Compounds Detected

Data Path : Z:\VOASRV\HPCHEM1\MSVOA_W\DATA\VW051019\
Data File : VW010370.D
Acq On : 10 May 2019 21:50
Operator : SY/VA
Sample : K2718-13
Misc : 5.27G/5ML/MSVOA_W/SOIL
ALS Vial : 21 Sample Multiplier: 1

Instrument :
MSVOA_W
ClientSampleId :
P026-SS006-0612-01

Quant Method : Z:\VOASRV\HPCHEM1\MSVOA_W\METHOD\82W050919S.M
Quant Title : SW846 8260

TIC Library : C:\DATABASE\NIST11.L
TIC Integration Parameters: LSCINT.P

TIC Top Hit name	RT	EstConc	Units	Response	--Internal Standard--			
					#	RT	Resp	Conc
