

Data Path : Z:\voasrv\HPCHEM1\MSVOA_W\Data\VW051022\
 Data File : VW022951.D
 Acq On : 10 May 2022 13:06
 Operator : SY/VA
 Sample : N2746-02
 Misc : 5.51g/10mL/MSVOA_W/SOIL
 ALS Vial : 1 Sample Multiplier: 1

Instrument :
 MSVOA_W
 ClientSampleId :
 DBSK5

Integration Parameters: LSCINT.P

Integrator: RTE
 Smoothing : OFF
 Sampling : 1
 Start Thrs: 0.2
 Stop Thrs : 0

Filtering: 5
 Min Area: 0 % of largest Peak
 Max Peaks: 100
 Peak Location: TOP

If leading or trailing edge < 100 prefer < Baseline drop else tangent >
 Peak separation: 5

Method : Z:\voasrv\HPCHEM1\MSVOA_W\Method\SFAMWLM050222SMA.M
 Title : SFAM01.0

Signal : TIC: VW022951.D\data.ms

| peak # | R.T. min | first scan | max scan | last scan | PK TY | peak height | corr. area | corr. % max. | % of total |
|--------|----------|------------|----------|-----------|-------|-------------|------------|--------------|------------|
| 1 | 2.178 | 36 | 45 | 46 | rBV5 | 5261 | 8349 | 0.14% | 0.041% |
| 2 | 2.355 | 68 | 74 | 82 | rBV | 135228 | 227208 | 3.86% | 1.122% |
| 3 | 2.885 | 155 | 161 | 172 | rVB | 78286 | 164118 | 2.79% | 0.810% |
| 4 | 3.385 | 240 | 243 | 246 | rBV5 | 1182 | 2109 | 0.04% | 0.010% |
| 5 | 3.513 | 258 | 264 | 266 | rVV7 | 1192 | 1854 | 0.03% | 0.009% |
| 6 | 3.842 | 316 | 318 | 322 | rVB5 | 1063 | 1095 | 0.02% | 0.005% |
| 7 | 4.019 | 336 | 347 | 360 | rBV | 135644 | 391302 | 6.65% | 1.932% |
| 8 | 4.110 | 360 | 362 | 365 | rVB4 | 1556 | 1452 | 0.02% | 0.007% |
| 9 | 4.293 | 390 | 392 | 395 | rVB4 | 988 | 1214 | 0.02% | 0.006% |
| 10 | 4.397 | 408 | 409 | 416 | rVB5 | 1535 | 2467 | 0.04% | 0.012% |
| 11 | 4.513 | 426 | 428 | 432 | rVB6 | 923 | 1273 | 0.02% | 0.006% |
| 12 | 4.915 | 486 | 494 | 500 | rBV7 | 4168 | 13529 | 0.23% | 0.067% |
| 13 | 5.080 | 518 | 521 | 525 | rBV5 | 1167 | 1862 | 0.03% | 0.009% |
| 14 | 5.366 | 566 | 568 | 572 | rVV3 | 1138 | 1132 | 0.02% | 0.006% |
| 15 | 5.653 | 614 | 615 | 619 | rBV4 | 1301 | 1453 | 0.02% | 0.007% |
| 16 | 5.891 | 651 | 654 | 657 | rVV4 | 1037 | 1421 | 0.02% | 0.007% |
| 17 | 5.933 | 657 | 661 | 668 | rVV7 | 1868 | 3889 | 0.07% | 0.019% |
| 18 | 6.439 | 741 | 744 | 747 | rBV5 | 1065 | 1362 | 0.02% | 0.007% |
| 19 | 6.519 | 754 | 757 | 759 | rVV4 | 961 | 1089 | 0.02% | 0.005% |
| 20 | 6.945 | 825 | 827 | 832 | rVB4 | 1206 | 1152 | 0.02% | 0.006% |
| 21 | 7.079 | 841 | 849 | 858 | rBV2 | 32969 | 93706 | 1.59% | 0.463% |
| 22 | 7.555 | 925 | 927 | 931 | rVB4 | 925 | 1089 | 0.02% | 0.005% |
| 23 | 7.646 | 931 | 942 | 952 | rBV | 226526 | 554904 | 9.44% | 2.740% |
| 24 | 7.762 | 959 | 961 | 963 | rVB3 | 1083 | 1088 | 0.02% | 0.005% |
| 25 | 7.878 | 977 | 980 | 984 | rVB5 | 1456 | 1620 | 0.03% | 0.008% |
| 26 | 7.939 | 989 | 990 | 1000 | rVB7 | 2134 | 3700 | 0.06% | 0.018% |
| 27 | 8.079 | 1012 | 1013 | 1016 | rVB3 | 1832 | 1200 | 0.02% | 0.006% |
| 28 | 8.189 | 1029 | 1031 | 1035 | rVB5 | 1192 | 1103 | 0.02% | 0.005% |
| 29 | 8.274 | 1035 | 1045 | 1062 | rBV2 | 415114 | 1236757 | 21.03% | 6.106% |
| 30 | 8.390 | 1062 | 1064 | 1067 | rVV4 | 1977 | 2159 | 0.04% | 0.011% |
| 31 | 8.415 | 1067 | 1068 | 1071 | rVB3 | 1232 | 1153 | 0.02% | 0.006% |
| 32 | 8.579 | 1094 | 1095 | 1098 | rVB3 | 1601 | 1245 | 0.02% | 0.006% |
| 33 | 8.841 | 1129 | 1138 | 1150 | rBV | 437857 | 855576 | 14.55% | 4.224% |
| 34 | 9.000 | 1161 | 1164 | 1167 | rVB5 | 1062 | 1403 | 0.02% | 0.007% |
| 35 | 9.079 | 1171 | 1177 | 1187 | rVB5 | 2535 | 6594 | 0.11% | 0.033% |
| 36 | 9.183 | 1192 | 1194 | 1197 | rBV4 | 1075 | 1208 | 0.02% | 0.006% |

Data Path : Z:\voasrv\HPCHEM1\MSVOA_W\Data\VW051022\
 Data File : VW022951.D
 Acq On : 10 May 2022 13:06
 Operator : SY/VA
 Sample : N2746-02
 Misc : 5.51g/10mL/MSVOA_W/SOIL
 ALS Vial : 1 Sample Multiplier: 1

Instrument :
 MSVOA_W
 ClientSampleId :
 DBSK5

Integration Parameters: LSCINT.P

Integrator: RTE
 Smoothing : OFF
 Sampling : 1
 Start Thrs: 0.2
 Stop Thrs : 0

Filtering: 5
 Min Area: 0 % of largest Peak
 Max Peaks: 100
 Peak Location: TOP

If leading or trailing edge < 100 prefer < Baseline drop else tangent >
 Peak separation: 5

Method : Z:\voasrv\HPCHEM1\MSVOA_W\Method\SFAMWLM050222SMA.M
 Title : SFAM01.0

| | | | | | | | | | |
|----|--------|------|------|------|------|--------|---------|--------|--------|
| 37 | 9.274 | 1200 | 1209 | 1219 | rVV | 287014 | 587344 | 9.99% | 2.900% |
| 38 | 9.353 | 1219 | 1222 | 1229 | rVV8 | 4120 | 7408 | 0.13% | 0.037% |
| 39 | 9.469 | 1237 | 1241 | 1245 | rBV7 | 810 | 1583 | 0.03% | 0.008% |
| 40 | 9.664 | 1266 | 1273 | 1277 | rVV8 | 1637 | 4086 | 0.07% | 0.020% |
| 41 | 9.798 | 1291 | 1295 | 1296 | rBV3 | 1197 | 1235 | 0.02% | 0.006% |
| 42 | 9.835 | 1296 | 1301 | 1303 | rVV4 | 966 | 1241 | 0.02% | 0.006% |
| 43 | 10.036 | 1326 | 1334 | 1347 | rBV | 147209 | 270918 | 4.61% | 1.338% |
| 44 | 10.128 | 1347 | 1349 | 1354 | rVB5 | 1732 | 2424 | 0.04% | 0.012% |
| 45 | 10.323 | 1373 | 1381 | 1388 | rBV | 616059 | 1066875 | 18.14% | 5.267% |
| 46 | 10.384 | 1388 | 1391 | 1400 | rVB | 25843 | 46245 | 0.79% | 0.228% |
| 47 | 10.475 | 1403 | 1406 | 1407 | rBV3 | 1672 | 1454 | 0.02% | 0.007% |
| 48 | 10.579 | 1415 | 1423 | 1432 | rBV | 90642 | 159829 | 2.72% | 0.789% |
| 49 | 10.707 | 1438 | 1444 | 1449 | rVB4 | 3494 | 6750 | 0.11% | 0.033% |
| 50 | 10.853 | 1464 | 1468 | 1472 | rBV4 | 1375 | 2313 | 0.04% | 0.011% |
| 51 | 10.926 | 1472 | 1480 | 1487 | rBV | 127489 | 227653 | 3.87% | 1.124% |
| 52 | 11.298 | 1539 | 1541 | 1542 | rVV2 | 1411 | 1167 | 0.02% | 0.006% |
| 53 | 11.316 | 1542 | 1544 | 1545 | rVV2 | 1589 | 1266 | 0.02% | 0.006% |
| 54 | 11.365 | 1547 | 1552 | 1554 | rVV6 | 2131 | 3487 | 0.06% | 0.017% |
| 55 | 11.408 | 1557 | 1559 | 1563 | rVV4 | 2389 | 2508 | 0.04% | 0.012% |
| 56 | 11.487 | 1570 | 1572 | 1577 | rVB5 | 1197 | 1386 | 0.02% | 0.007% |
| 57 | 11.627 | 1585 | 1595 | 1605 | rVV | 629772 | 1076202 | 18.30% | 5.313% |
| 58 | 11.725 | 1607 | 1611 | 1620 | rVB2 | 16496 | 32367 | 0.55% | 0.160% |
| 59 | 11.835 | 1620 | 1629 | 1637 | rBV2 | 34418 | 70909 | 1.21% | 0.350% |
| 60 | 12.011 | 1656 | 1658 | 1662 | rBV4 | 1508 | 2140 | 0.04% | 0.011% |
| 61 | 12.091 | 1668 | 1671 | 1672 | rBV3 | 1249 | 1223 | 0.02% | 0.006% |
| 62 | 12.109 | 1672 | 1674 | 1677 | rBV4 | 938 | 1125 | 0.02% | 0.006% |
| 63 | 12.170 | 1677 | 1684 | 1693 | rVB4 | 32115 | 63441 | 1.08% | 0.313% |
| 64 | 12.304 | 1703 | 1706 | 1707 | rBV3 | 1700 | 1576 | 0.03% | 0.008% |
| 65 | 12.420 | 1714 | 1725 | 1727 | rBV5 | 10042 | 26212 | 0.45% | 0.129% |
| 66 | 12.688 | 1763 | 1769 | 1776 | rBV | 222801 | 371923 | 6.32% | 1.836% |
| 67 | 12.865 | 1793 | 1798 | 1801 | rBV3 | 17360 | 34985 | 0.59% | 0.173% |
| 68 | 13.103 | 1831 | 1837 | 1843 | rBV5 | 6710 | 15215 | 0.26% | 0.075% |
| 69 | 13.249 | 1853 | 1861 | 1864 | rBV | 39600 | 74354 | 1.26% | 0.367% |
| 70 | 13.475 | 1892 | 1898 | 1904 | rVB | 83881 | 143609 | 2.44% | 0.709% |
| 71 | 13.554 | 1904 | 1911 | 1921 | rBV | 732504 | 1210778 | 20.59% | 5.978% |
| 72 | 13.755 | 1938 | 1944 | 1952 | rBV | 61499 | 100305 | 1.71% | 0.495% |
| 73 | 13.853 | 1953 | 1960 | 1967 | rVV | 609429 | 1024205 | 17.42% | 5.057% |
| 74 | 13.938 | 1967 | 1974 | 1989 | rVB | 616295 | 1062618 | 18.07% | 5.246% |
| 75 | 14.157 | 2005 | 2010 | 2013 | rBV5 | 2361 | 4904 | 0.08% | 0.024% |
| 76 | 14.206 | 2013 | 2018 | 2022 | rVV | 18138 | 29677 | 0.50% | 0.147% |

Data Path : Z:\voasrv\HPCHEM1\MSVOA_W\Data\VW051022\
 Data File : VW022951.D
 Acq On : 10 May 2022 13:06
 Operator : SY/VA
 Sample : N2746-02
 Misc : 5.51g/10mL/MSVOA_W/SOIL
 ALS Vial : 1 Sample Multiplier: 1

Instrument :
 MSVOA_W
 ClientSampleId :
 DBSK5

Integration Parameters: LSCINT.P

Integrator: RTE
 Smoothing : OFF Filtering: 5
 Sampling : 1 Min Area: 0 % of largest Peak
 Start Thrs: 0.2 Max Peaks: 100
 Stop Thrs : 0 Peak Location: TOP

If leading or trailing edge < 100 prefer < Baseline drop else tangent >
 Peak separation: 5

Method : Z:\voasrv\HPCHEM1\MSVOA_W\Method\SFAMWLM050222SMA.M
 Title : SFAM01.0

| | | | | | | | | | |
|-----|--------|------|------|------|------|---------|---------|---------|---------|
| 77 | 14.298 | 2024 | 2033 | 2043 | rVB5 | 18968 | 65920 | 1.12% | 0.325% |
| 78 | 14.389 | 2043 | 2048 | 2055 | rBV3 | 21326 | 37654 | 0.64% | 0.186% |
| 79 | 14.481 | 2055 | 2063 | 2071 | rBV2 | 42921 | 101061 | 1.72% | 0.499% |
| 80 | 14.627 | 2082 | 2087 | 2090 | rBV7 | 2504 | 5164 | 0.09% | 0.025% |
| 81 | 14.682 | 2090 | 2096 | 2102 | rVV2 | 18529 | 32776 | 0.56% | 0.162% |
| 82 | 14.804 | 2109 | 2116 | 2121 | rVB3 | 33665 | 61008 | 1.04% | 0.301% |
| 83 | 14.865 | 2121 | 2126 | 2129 | rBV3 | 14103 | 24055 | 0.41% | 0.119% |
| 84 | 14.950 | 2129 | 2140 | 2155 | rVB2 | 530059 | 1558360 | 26.50% | 7.694% |
| 85 | 15.127 | 2167 | 2169 | 2170 | rBV2 | 2356 | 1982 | 0.03% | 0.010% |
| 86 | 15.163 | 2173 | 2175 | 2183 | rVB7 | 6326 | 13118 | 0.22% | 0.065% |
| 87 | 15.358 | 2193 | 2207 | 2216 | rBV | 3390928 | 5880575 | 100.00% | 29.033% |
| 88 | 15.456 | 2217 | 2223 | 2232 | rVV | 151227 | 285605 | 4.86% | 1.410% |
| 89 | 15.645 | 2245 | 2254 | 2263 | rVB4 | 13697 | 41374 | 0.70% | 0.204% |
| 90 | 15.785 | 2274 | 2277 | 2278 | rBV3 | 2102 | 1700 | 0.03% | 0.008% |
| 91 | 15.810 | 2278 | 2281 | 2282 | rBV3 | 4033 | 3783 | 0.06% | 0.019% |
| 92 | 15.828 | 2282 | 2284 | 2286 | rVB3 | 3320 | 3022 | 0.05% | 0.015% |
| 93 | 15.944 | 2299 | 2303 | 2304 | rBV4 | 2439 | 3343 | 0.06% | 0.017% |
| 94 | 16.005 | 2311 | 2313 | 2314 | rBV2 | 2341 | 1572 | 0.03% | 0.008% |
| 95 | 16.248 | 2350 | 2353 | 2356 | rBV4 | 2437 | 3122 | 0.05% | 0.015% |
| 96 | 16.334 | 2365 | 2367 | 2368 | rBV2 | 2455 | 1830 | 0.03% | 0.009% |
| 97 | 16.377 | 2368 | 2374 | 2377 | rVV3 | 12610 | 27448 | 0.47% | 0.136% |
| 98 | 16.431 | 2377 | 2383 | 2397 | rVV | 122741 | 269320 | 4.58% | 1.330% |
| 99 | 16.559 | 2400 | 2404 | 2409 | rVV6 | 7188 | 13559 | 0.23% | 0.067% |
| 100 | 16.639 | 2409 | 2417 | 2426 | rVV | 211429 | 478555 | 8.14% | 2.363% |

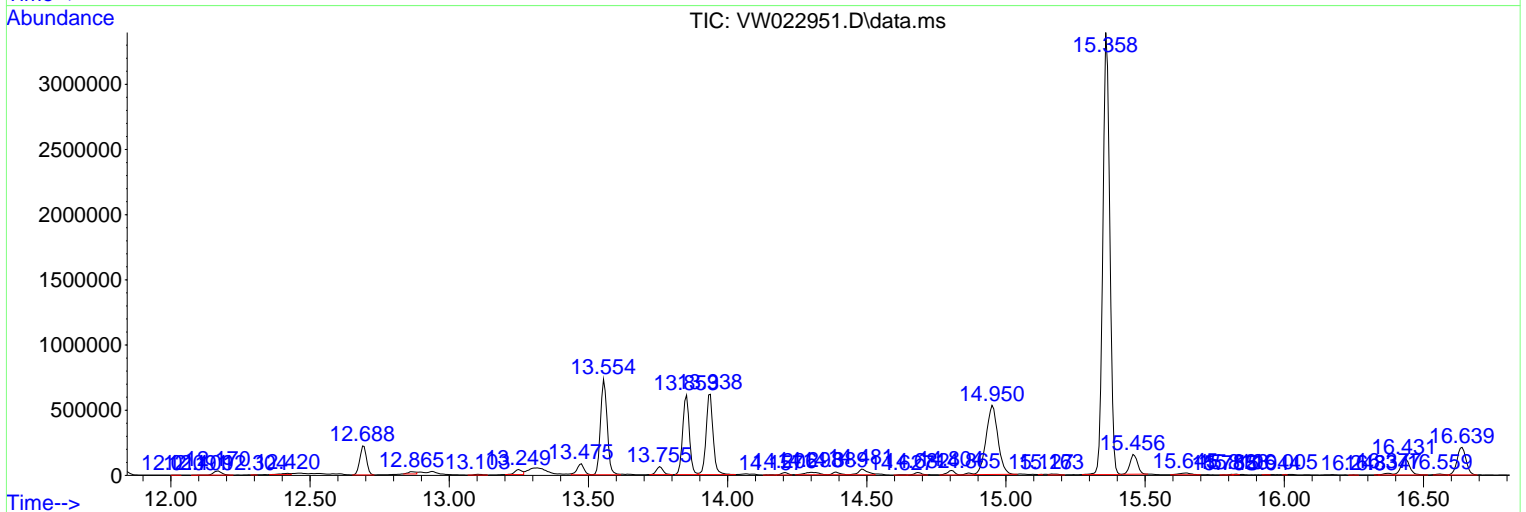
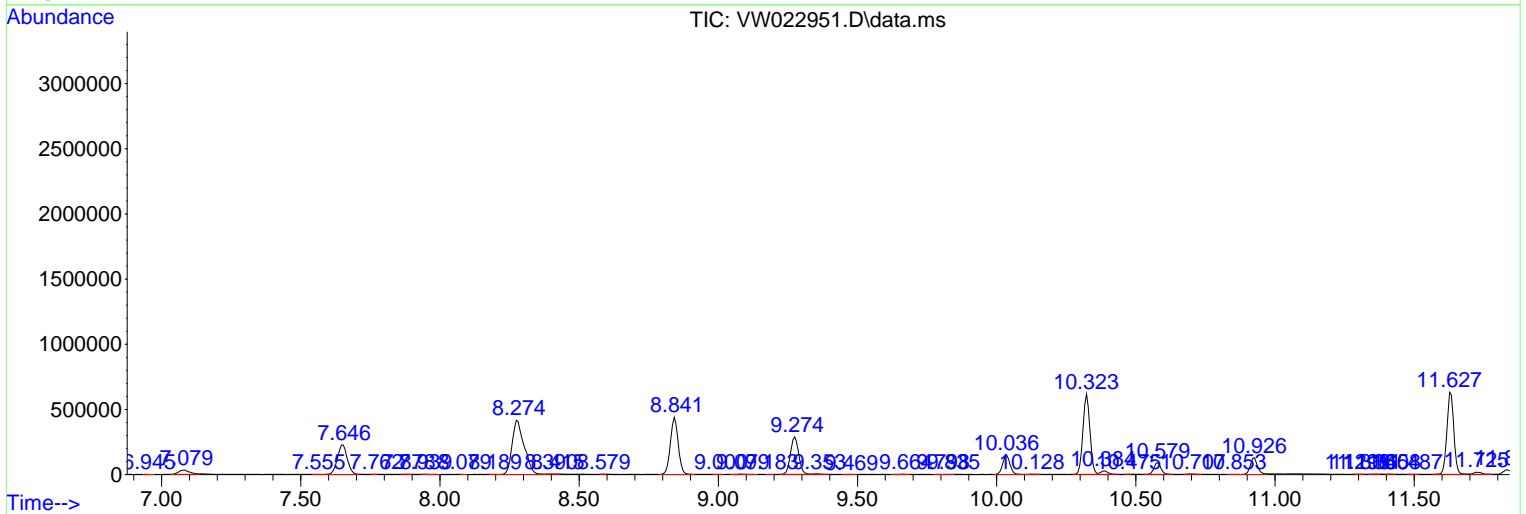
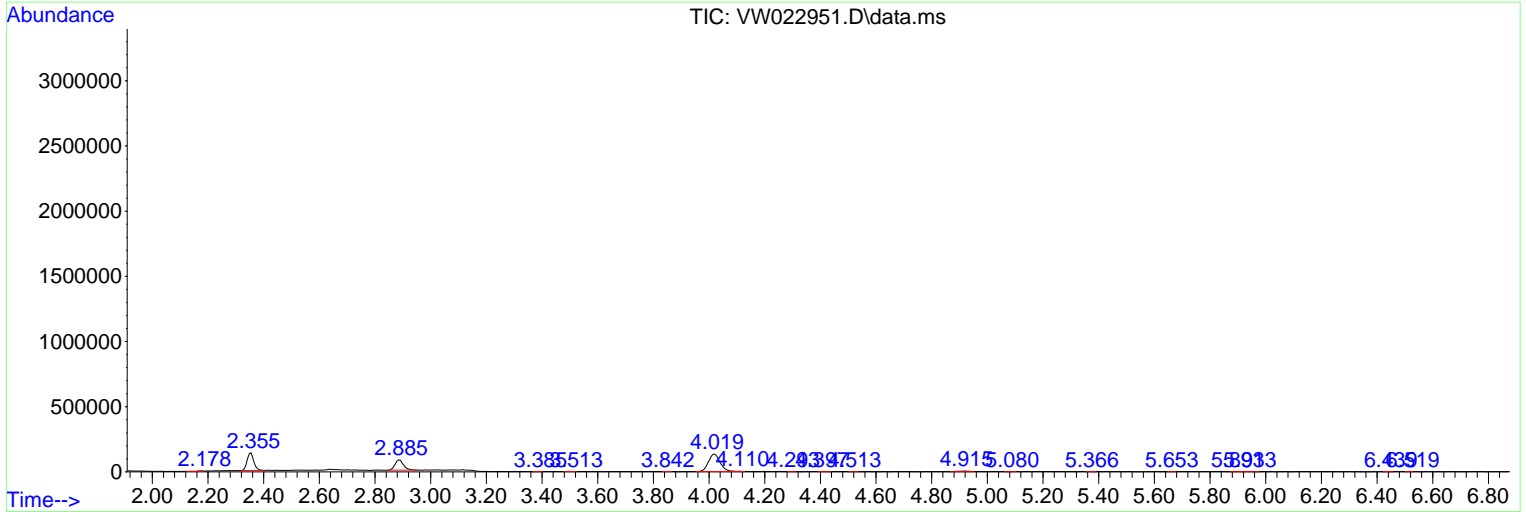
Sum of corrected areas: 20254681

Data Path : Z:\voasrv\HPCHEM1\MSVOA_W\Data\VW051022\
 Data File : VW022951.D
 Acq On : 10 May 2022 13:06
 Operator : SY/VA
 Sample : N2746-02
 Misc : 5.51g/10mL/MSVOA_W/SOIL
 ALS Vial : 1 Sample Multiplier: 1

Instrument :
 MSVOA_W
 ClientSampleId :
 DBSK5

Quant Method : Z:\voasrv\HPCHEM1\MSVOA_W\Method\SFAMWLM050222SMA.M
 Quant Title : SFAM01.0

TIC Library : C:\Database\NIST20.L
 TIC Integration Parameters: LSCINT.P



Data Path : Z:\voasrv\HPCHEM1\MSVOA_W\Data\VW051022\
 Data File : VW022951.D
 Acq On : 10 May 2022 13:06
 Operator : SY/VA
 Sample : N2746-02
 Misc : 5.51g/10mL/MSVOA_W/SOIL
 ALS Vial : 1 Sample Multiplier: 1

Instrument :
 MSVOA_W
 ClientSampleId :
 DBSK5

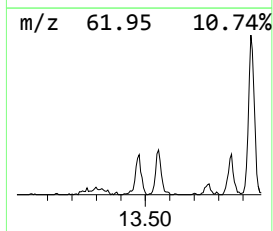
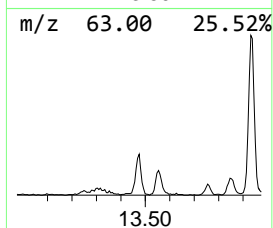
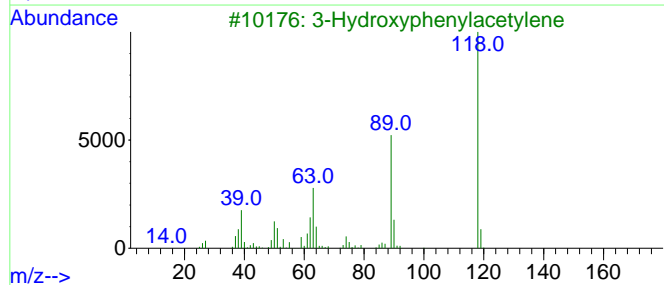
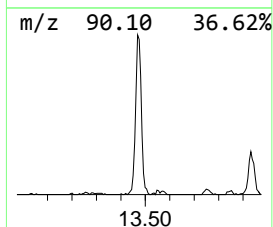
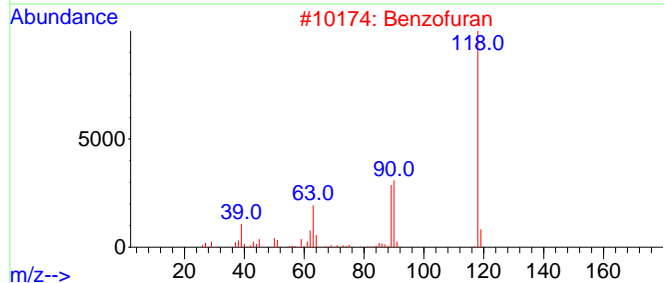
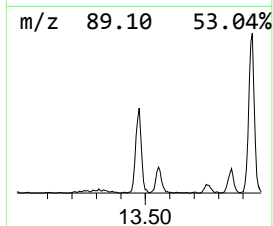
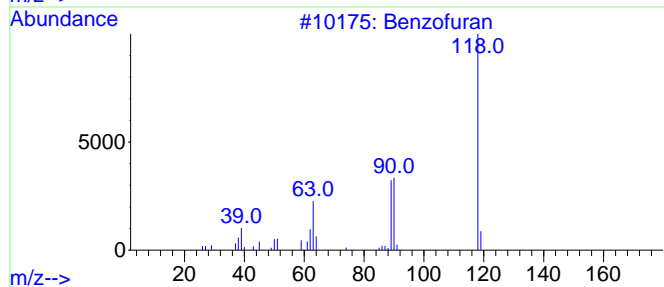
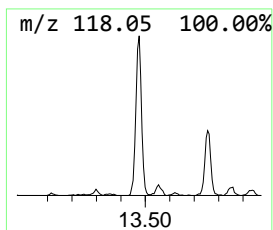
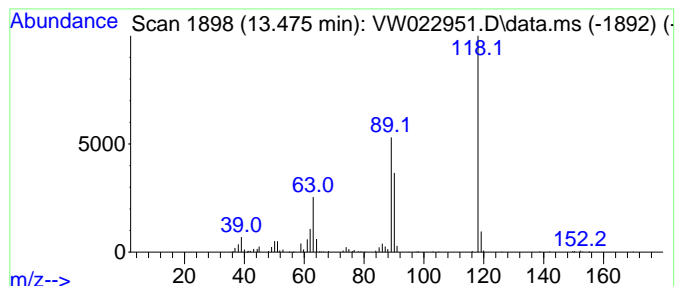
Quant Method : Z:\voasrv\HPCHEM1\MSVOA_W\Method\SFAMWLM050222SMA.M
 Quant Title : SFAM01.0

TIC Library : C:\Database\NIST0.L
 TIC Integration Parameters: LSCINT.P

 Peak Number 2 Benzofuran Concentration Rank 8

| R.T. | EstConc | Area | Relative to ISTD | R.T. |
|--------|-----------|--------|------------------------|--------|
| 13.475 | 2.97 ug/L | 143609 | 1,4-Dichlorobenzene-d4 | 13.554 |

| Hit# | of | 5 | Tentative ID | MW | MolForm | CAS# | Qual |
|------|----|---|--------------------------|-----|---------|-------------|------|
| 1 | | | Benzofuran | 118 | C8H6O | 000271-89-6 | 93 |
| 2 | | | Benzofuran | 118 | C8H6O | 000271-89-6 | 90 |
| 3 | | | 3-Hydroxyphenylacetylene | 118 | C8H6O | 010401-11-3 | 90 |
| 4 | | | Coumarin | 146 | C9H6O2 | 000091-64-5 | 90 |
| 5 | | | Benzofuran | 118 | C8H6O | 000271-89-6 | 80 |



Data Path : Z:\voasrv\HPCHEM1\MSVOA_W\Data\VW051022\
 Data File : VW022951.D
 Acq On : 10 May 2022 13:06
 Operator : SY/VA
 Sample : N2746-02
 Misc : 5.51g/10mL/MSVOA_W/SOIL
 ALS Vial : 1 Sample Multiplier: 1

Instrument :
 MSVOA_W
 ClientSampleId :
 DBSK5

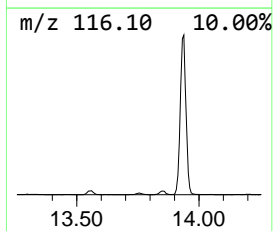
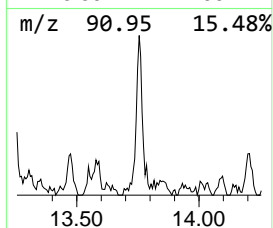
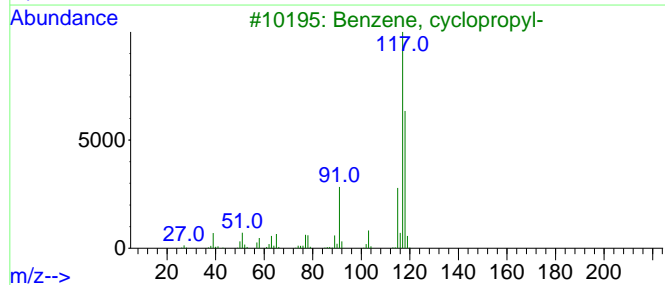
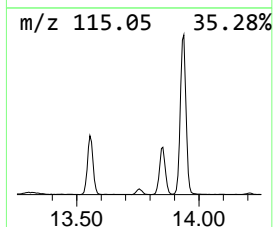
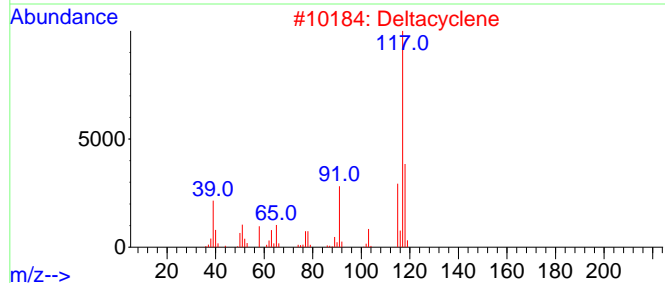
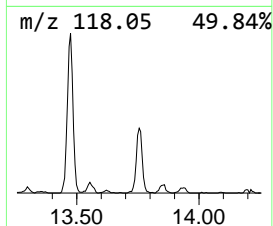
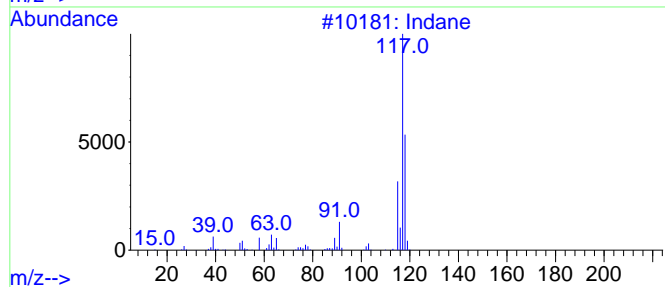
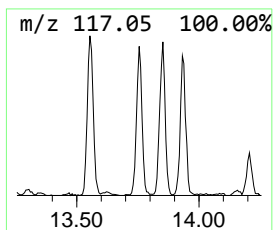
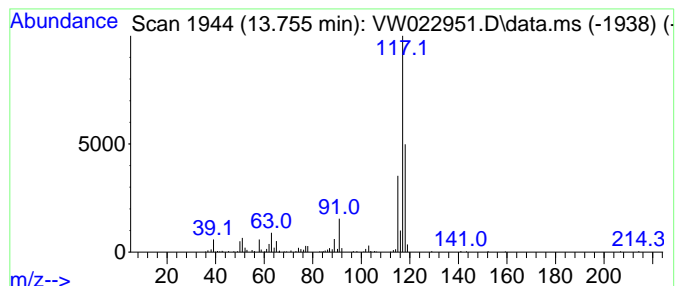
Quant Method : Z:\voasrv\HPCHEM1\MSVOA_W\Method\SFAMWLM050222SMA.M
 Quant Title : SFAM01.0

TIC Library : C:\Database\NIST20.L
 TIC Integration Parameters: LSCINT.P

 Peak Number 3 Indane Concentration Rank 10

| R.T. | EstConc | Area | Relative to ISTD | R.T. |
|--------|-----------|--------|------------------------|--------|
| 13.755 | 2.07 ug/L | 100305 | 1,4-Dichlorobenzene-d4 | 13.554 |

| Hit# | of | Tentative ID | MW | MolForm | CAS# | Qual |
|------|----|-------------------------------------|-----|---------|--------------|------|
| 1 | 5 | Indane | 118 | C9H10 | 000496-11-7 | 95 |
| 2 | | Deltacyclene | 118 | C9H10 | 007785-10-6 | 81 |
| 3 | | Benzene, cyclopropyl- | 118 | C9H10 | 000873-49-4 | 74 |
| 4 | | Tetracyclo[3.3.1.0(2,8).0(4,6)]-... | 118 | C9H10 | 1000191-13-7 | 72 |
| 5 | | Deltacyclene | 118 | C9H10 | 007785-10-6 | 64 |



Data Path : Z:\voasrv\HPCHEM1\MSVOA_W\Data\VW051022\
 Data File : VW022951.D
 Acq On : 10 May 2022 13:06
 Operator : SY/VA
 Sample : N2746-02
 Misc : 5.51g/10mL/MSVOA_W/SOIL
 ALS Vial : 1 Sample Multiplier: 1

Instrument :
 MSVOA_W
 ClientSampleId :
 DBSK5

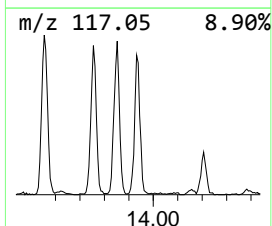
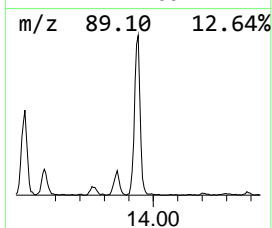
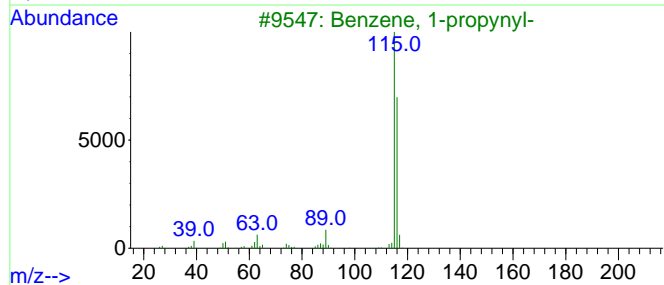
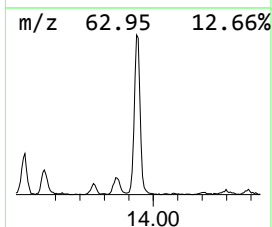
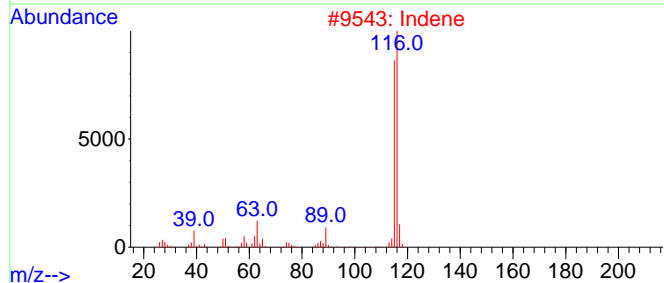
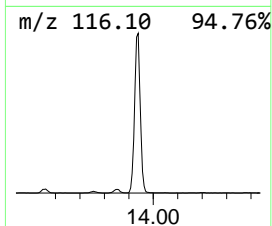
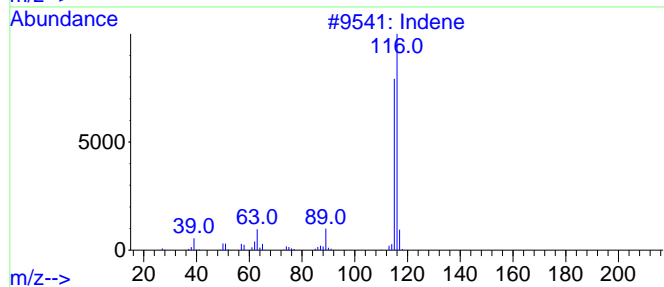
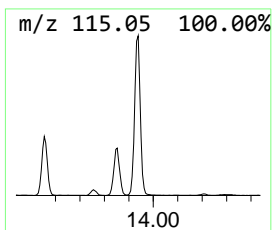
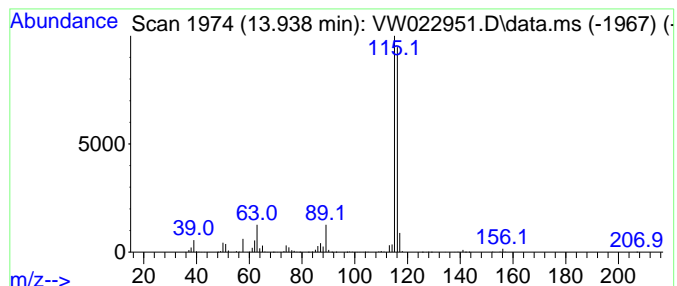
Quant Method : Z:\voasrv\HPCHEM1\MSVOA_W\Method\SFAMWLM050222SMA.M
 Quant Title : SFAM01.0

TIC Library : C:\Database\NIST20.L
 TIC Integration Parameters: LSCINT.P

 Peak Number 4 Indene Concentration Rank 3

| R.T. | EstConc | Area | Relative to ISTD | R.T. |
|--------|------------|---------|------------------------|--------|
| 13.938 | 21.94 ug/L | 1062620 | 1,4-Dichlorobenzene-d4 | 13.554 |

| Hit# | of | Tentative ID | MW | MolForm | CAS# | Qual |
|------|----|-------------------------|-----|---------|-------------|------|
| 1 | 5 | Indene | 116 | C9H8 | 000095-13-6 | 97 |
| 2 | | Indene | 116 | C9H8 | 000095-13-6 | 96 |
| 3 | | Benzene, 1-propynyl- | 116 | C9H8 | 000673-32-5 | 94 |
| 4 | | 3-Methylphenylacetylene | 116 | C9H8 | 000766-82-5 | 91 |
| 5 | | Benzene, 1-propynyl- | 116 | C9H8 | 000673-32-5 | 91 |



Data Path : Z:\voasrv\HPCHEM1\MSVOA_W\Data\VW051022\
 Data File : VW022951.D
 Acq On : 10 May 2022 13:06
 Operator : SY/VA
 Sample : N2746-02
 Misc : 5.51g/10mL/MSVOA_W/SOIL
 ALS Vial : 1 Sample Multiplier: 1

Instrument :
 MSVOA_W
 ClientSampleId :
 DBSK5

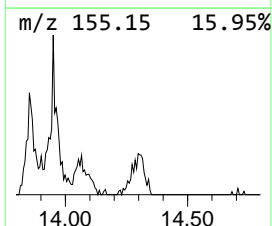
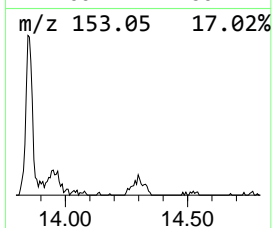
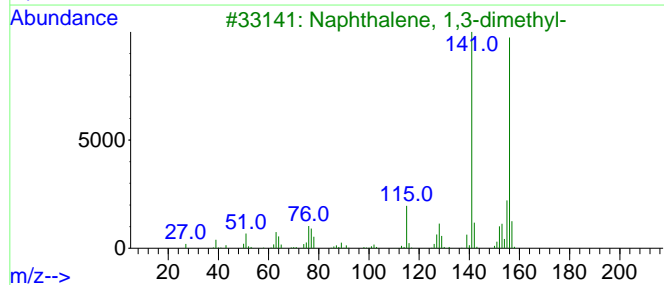
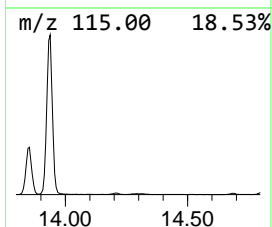
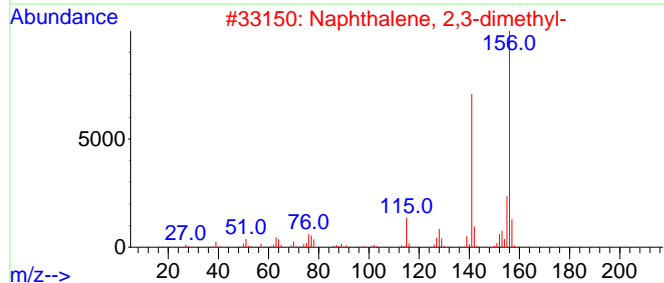
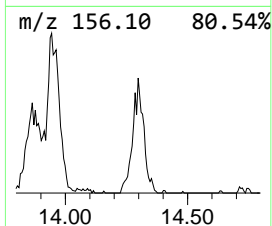
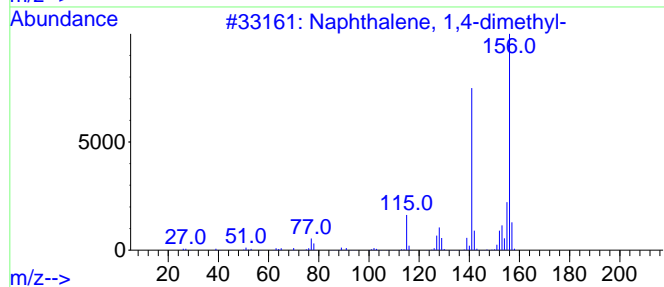
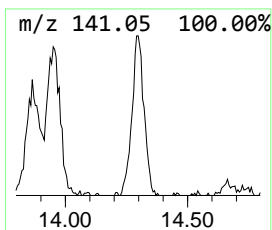
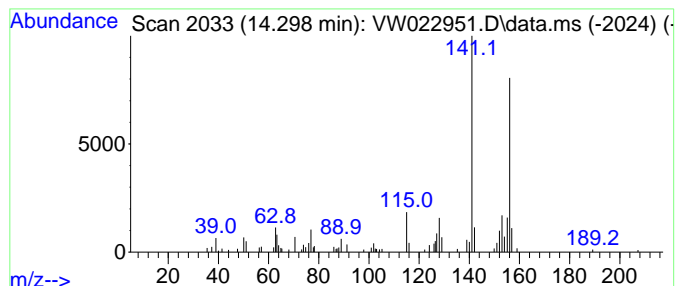
Quant Method : Z:\voasrv\HPCHEM1\MSVOA_W\Method\SFAMWLM050222SMA.M
 Quant Title : SFAM01.0

TIC Library : C:\Database\NIST0.L
 TIC Integration Parameters: LSCINT.P

 Peak Number 5 Naphthalene, 1,4-dimethyl- Concentration Rank 11

| R.T. | EstConc | Area | Relative to ISTD | R.T. |
|--------|-----------|-------|------------------------|--------|
| 14.298 | 1.36 ug/L | 65920 | 1,4-Dichlorobenzene-d4 | 13.554 |

| Hit# | of | Tentative ID | MW | MolForm | CAS# | Qual |
|------|----|----------------------------|-----|---------|-------------|------|
| 1 | 5 | Naphthalene, 1,4-dimethyl- | 156 | C12H12 | 000571-58-4 | 95 |
| 2 | | Naphthalene, 2,3-dimethyl- | 156 | C12H12 | 000581-40-8 | 91 |
| 3 | | Naphthalene, 1,3-dimethyl- | 156 | C12H12 | 000575-41-7 | 90 |
| 4 | | Naphthalene, 2,3-dimethyl- | 156 | C12H12 | 000581-40-8 | 90 |
| 5 | | Naphthalene, 1,6-dimethyl- | 156 | C12H12 | 000575-43-9 | 90 |



Data Path : Z:\voasrv\HPCHEM1\MSVOA_W\Data\VW051022\
 Data File : VW022951.D
 Acq On : 10 May 2022 13:06
 Operator : SY/VA
 Sample : N2746-02
 Misc : 5.51g/10mL/MSVOA_W/SOIL
 ALS Vial : 1 Sample Multiplier: 1

Instrument :
 MSVOA_W
 ClientSampleId :
 DBSK5

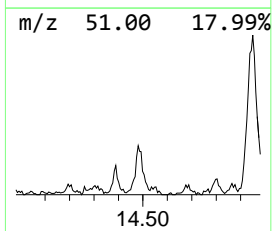
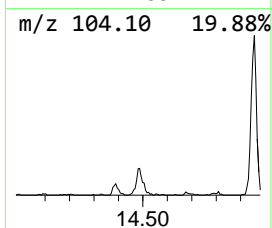
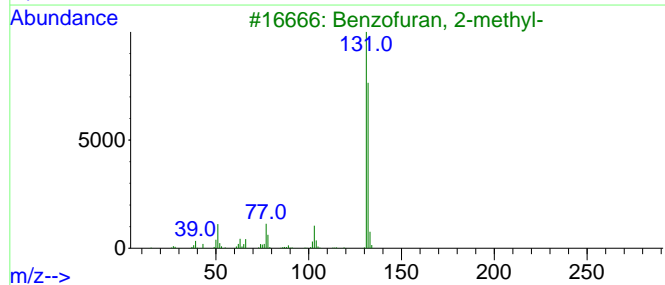
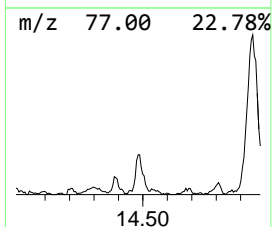
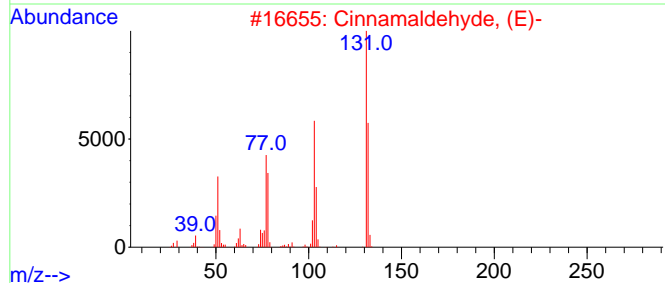
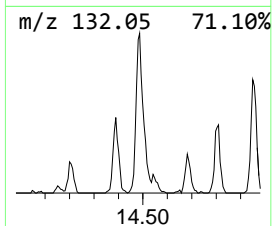
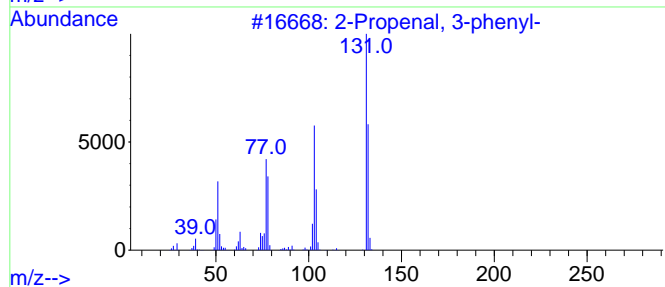
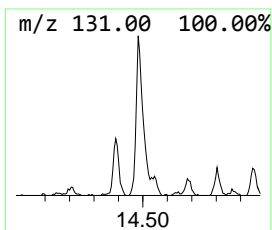
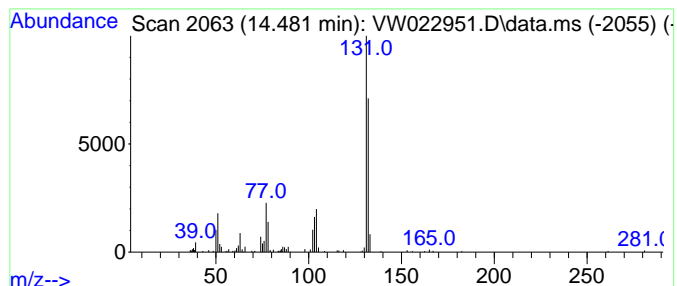
Quant Method : Z:\voasrv\HPCHEM1\MSVOA_W\Method\SFAMWLM050222SMA.M
 Quant Title : SFAM01.0

TIC Library : C:\Database\NIST20.L
 TIC Integration Parameters: LSCINT.P

 Peak Number 6 2-Propenal, 3-phenyl- Concentration Rank 9

| R.T. | EstConc | Area | Relative to ISTD | R.T. |
|--------|-----------|--------|------------------------|--------|
| 14.480 | 2.09 ug/L | 101061 | 1,4-Dichlorobenzene-d4 | 13.554 |

| Hit# | of 5 | Tentative ID | MW | MolForm | CAS# | Qual |
|------|------|-----------------------|-----|---------|-------------|------|
| 1 | | 2-Propenal, 3-phenyl- | 132 | C9H8O | 000104-55-2 | 91 |
| 2 | | Cinnamaldehyde, (E)- | 132 | C9H8O | 014371-10-9 | 91 |
| 3 | | Benzofuran, 2-methyl- | 132 | C9H8O | 004265-25-2 | 90 |
| 4 | | Benzofuran, 2-methyl- | 132 | C9H8O | 004265-25-2 | 90 |
| 5 | | Benzofuran, 2-methyl- | 132 | C9H8O | 004265-25-2 | 90 |



Data Path : Z:\voasrv\HPCHEM1\MSVOA_W\Data\VW051022\
 Data File : VW022951.D
 Acq On : 10 May 2022 13:06
 Operator : SY/VA
 Sample : N2746-02
 Misc : 5.51g/10mL/MSVOA_W/SOIL
 ALS Vial : 1 Sample Multiplier: 1

Instrument :
 MSVOA_W
 ClientSampleId :
 DBSK5

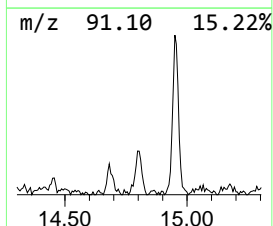
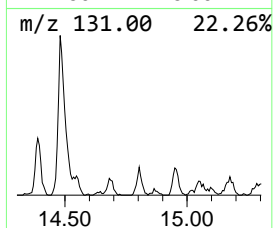
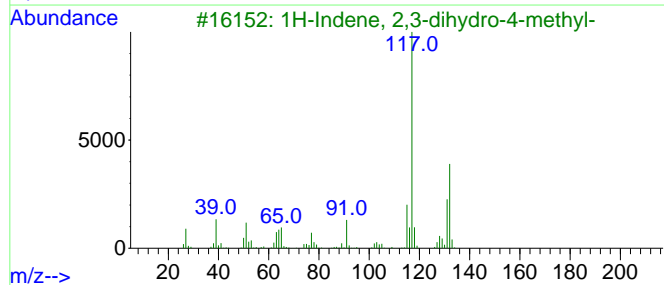
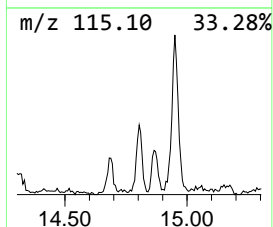
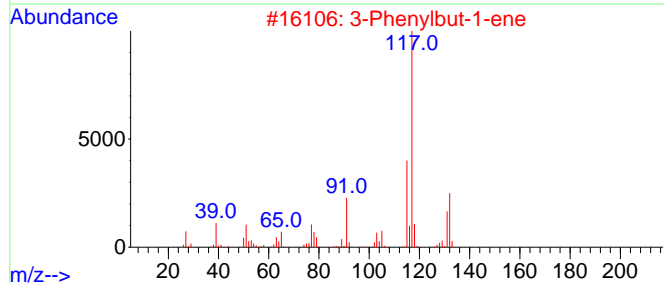
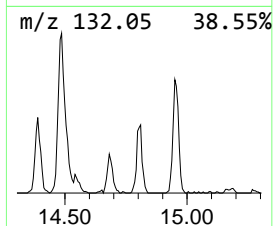
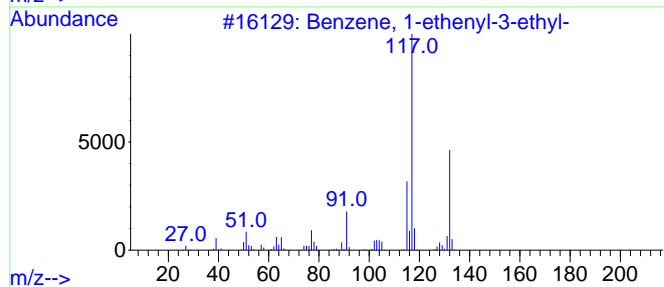
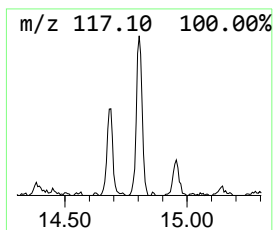
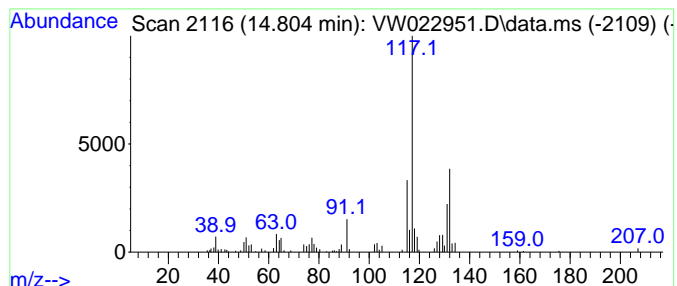
Quant Method : Z:\voasrv\HPCHEM1\MSVOA_W\Method\SFAMWLM050222SMA.M
 Quant Title : SFAM01.0

TIC Library : C:\Database\NIST0.L
 TIC Integration Parameters: LSCINT.P

 Peak Number 7 Benzene, 1-ethenyl-3-ethyl- Concentration Rank 12

| R.T. | EstConc | Area | Relative to ISTD | R.T. |
|--------|-----------|-------|------------------------|--------|
| 14.804 | 1.26 ug/L | 61008 | 1,4-Dichlorobenzene-d4 | 13.554 |

| Hit# | of | 5 | Tentative ID | MW | MolForm | CAS# | Qual |
|------|----|---|----------------------------------|-----|---------|-------------|------|
| 1 | | | Benzene, 1-ethenyl-3-ethyl- | 132 | C10H12 | 007525-62-4 | 91 |
| 2 | | | 3-Phenylbut-1-ene | 132 | C10H12 | 000934-10-1 | 91 |
| 3 | | | 1H-Indene, 2,3-dihydro-4-methyl- | 132 | C10H12 | 000824-22-6 | 90 |
| 4 | | | 1H-Indene, 2,3-dihydro-5-methyl- | 132 | C10H12 | 000874-35-1 | 90 |
| 5 | | | (E)-1-Phenyl-1-butene | 132 | C10H12 | 001005-64-7 | 87 |



Data Path : Z:\voasrv\HPCHEM1\MSVOA_W\Data\VW051022\
 Data File : VW022951.D
 Acq On : 10 May 2022 13:06
 Operator : SY/VA
 Sample : N2746-02
 Misc : 5.51g/10mL/MSVOA_W/SOIL
 ALS Vial : 1 Sample Multiplier: 1

Instrument :
 MSVOA_W
 ClientSampleId :
 DBSK5

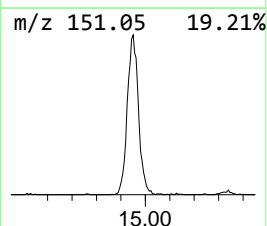
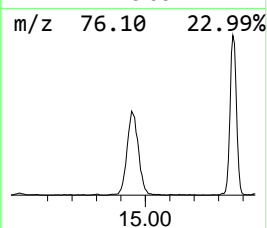
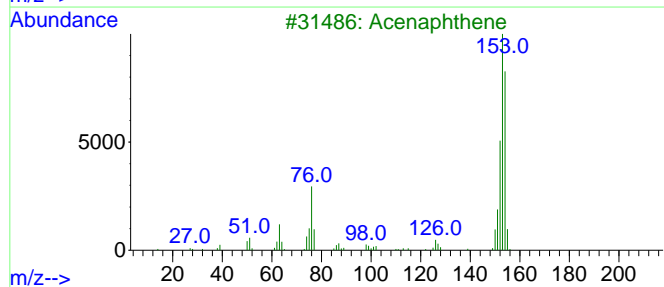
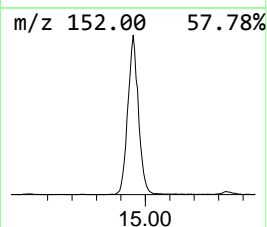
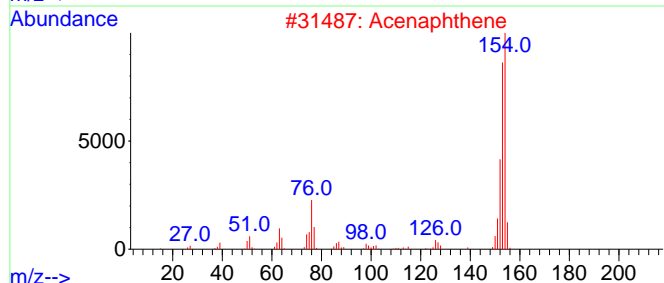
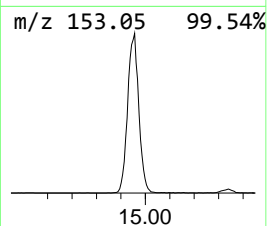
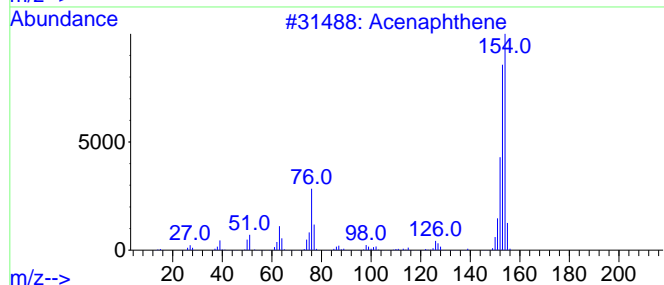
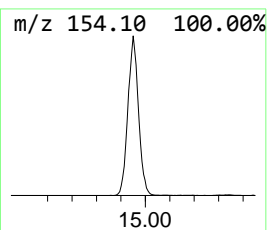
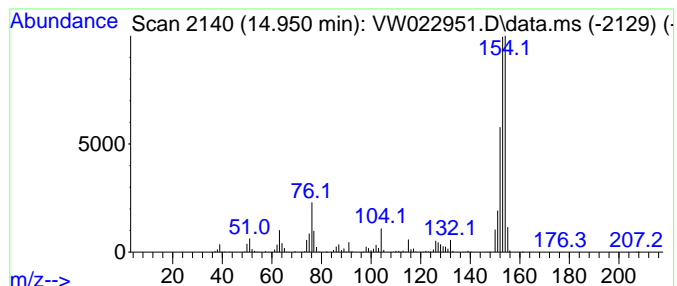
Quant Method : Z:\voasrv\HPCHEM1\MSVOA_W\Method\SFAMWLM050222SMA.M
 Quant Title : SFAM01.0

TIC Library : C:\Database\NIST0.L
 TIC Integration Parameters: LSCINT.P

 Peak Number 8 Hexa-2,4-diyn-1-ylbenzene Concentration Rank 2

| R.T. | EstConc | Area | Relative to ISTD | R.T. |
|--------|------------|---------|------------------------|--------|
| 14.950 | 32.18 ug/L | 1558360 | 1,4-Dichlorobenzene-d4 | 13.554 |

| Hit# | of | 5 | Tentative ID | MW | MolForm | CAS# | Qual |
|------|----|---|---------------------------|-----|---------|-------------|------|
| 1 | | | Acenaphthene | 154 | C12H10 | 000083-32-9 | 94 |
| 2 | | | Acenaphthene | 154 | C12H10 | 000083-32-9 | 93 |
| 3 | | | Acenaphthene | 154 | C12H10 | 000083-32-9 | 83 |
| 4 | | | Acenaphthene | 154 | C12H10 | 000083-32-9 | 76 |
| 5 | | | Hexa-2,4-diyn-1-ylbenzene | 154 | C12H10 | 000520-74-1 | 62 |



Data Path : Z:\voasrv\HPCHEM1\MSVOA_W\Data\VW051022\
 Data File : VW022951.D
 Acq On : 10 May 2022 13:06
 Operator : SY/VA
 Sample : N2746-02
 Misc : 5.51g/10mL/MSVOA_W/SOIL
 ALS Vial : 1 Sample Multiplier: 1

Instrument :
 MSVOA_W
 ClientSampleId :
 DBSK5

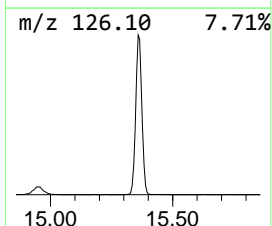
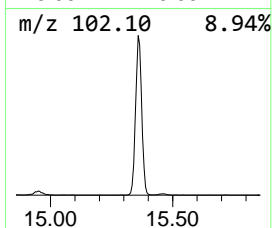
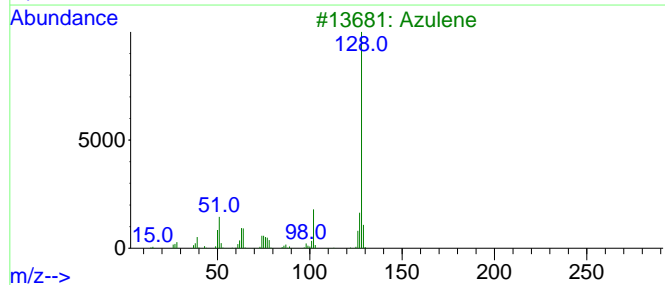
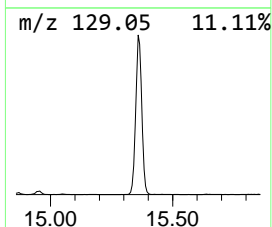
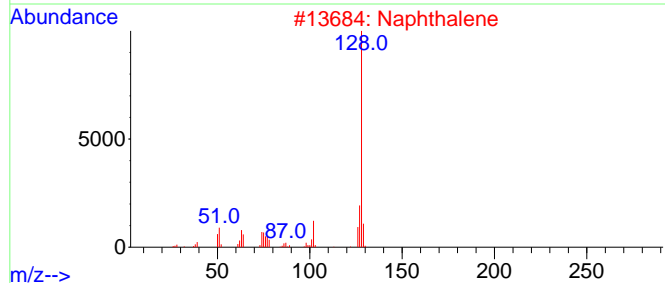
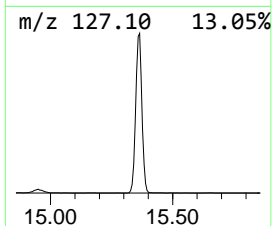
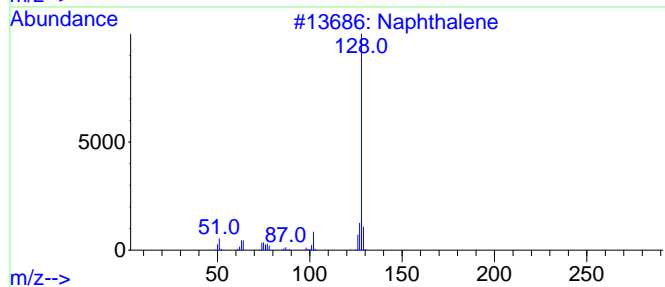
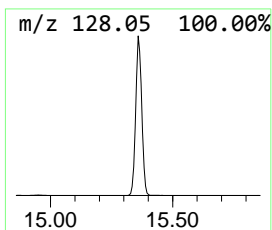
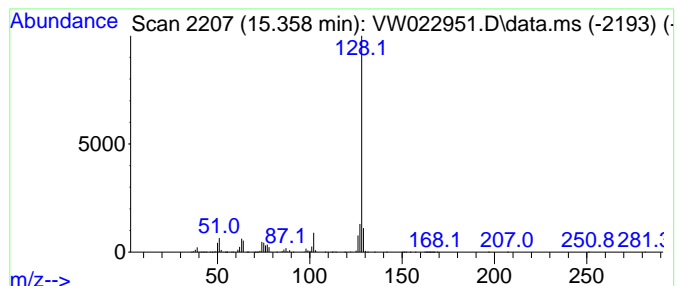
Quant Method : Z:\voasrv\HPCHEM1\MSVOA_W\Method\SFAMWLM050222SMA.M
 Quant Title : SFAM01.0

TIC Library : C:\Database\NIST0.L
 TIC Integration Parameters: LSCINT.P

 Peak Number 9 Azulene Concentration Rank 1

| R.T. | EstConc | Area | Relative to ISTD | R.T. |
|--------|-------------|---------|------------------------|--------|
| 15.358 | 121.42 ug/L | 5880580 | 1,4-Dichlorobenzene-d4 | 13.554 |

| Hit# | of | Tentative ID | MW | MolForm | CAS# | Qual |
|------|----|--------------|-----|---------|-------------|------|
| 1 | 5 | Naphthalene | 128 | C10H8 | 000091-20-3 | 95 |
| 2 | | Naphthalene | 128 | C10H8 | 000091-20-3 | 94 |
| 3 | | Azulene | 128 | C10H8 | 000275-51-4 | 91 |
| 4 | | Azulene | 128 | C10H8 | 000275-51-4 | 91 |
| 5 | | Azulene | 128 | C10H8 | 000275-51-4 | 90 |



Data Path : Z:\voasrv\HPCHEM1\MSVOA_W\Data\VW051022\
 Data File : VW022951.D
 Acq On : 10 May 2022 13:06
 Operator : SY/VA
 Sample : N2746-02
 Misc : 5.51g/10mL/MSVOA_W/SOIL
 ALS Vial : 1 Sample Multiplier: 1

Instrument :
 MSVOA_W
 ClientSampleId :
 DBSK5

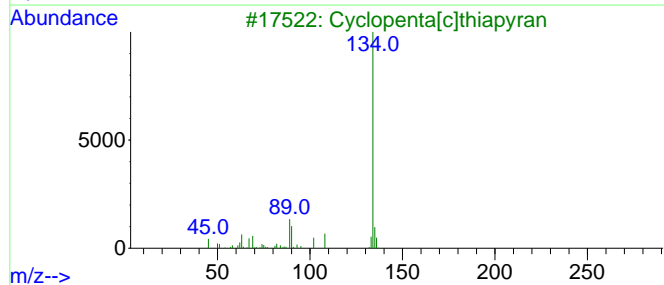
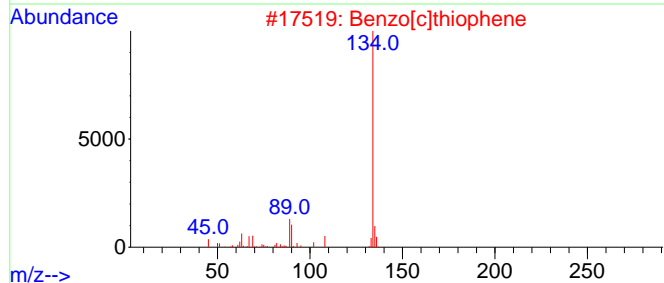
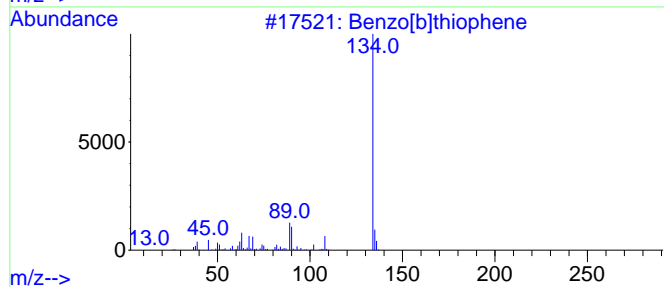
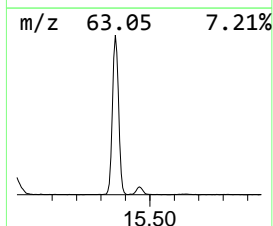
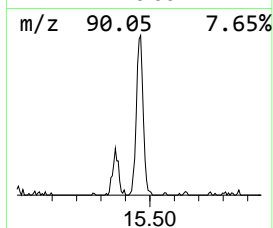
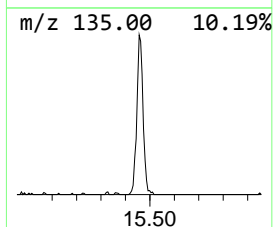
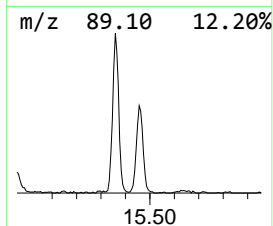
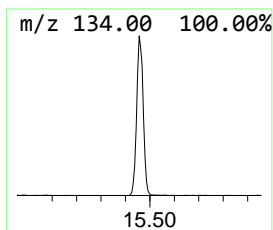
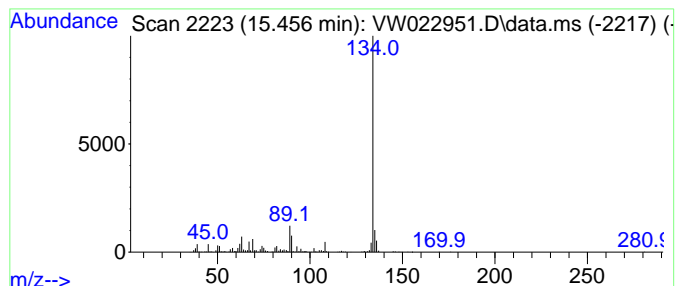
Quant Method : Z:\voasrv\HPCHEM1\MSVOA_W\Method\SFAMWLM050222SMA.M
 Quant Title : SFAM01.0

TIC Library : C:\Database\NIST20.L
 TIC Integration Parameters: LSCINT.P

 Peak Number 10 Benzo[b]thiophene Concentration Rank 6

| R.T. | EstConc | Area | Relative to ISTD | R.T. |
|--------|-----------|--------|------------------------|--------|
| 15.456 | 5.90 ug/L | 285605 | 1,4-Dichlorobenzene-d4 | 13.554 |

| Hit# | of | 5 | Tentative ID | MW | MolForm | CAS# | Qual |
|------|----|---|------------------------|-----|---------|-------------|------|
| 1 | | | Benzo[b]thiophene | 134 | C8H6S | 000095-15-8 | 95 |
| 2 | | | Benzo[c]thiophene | 134 | C8H6S | 000270-82-6 | 95 |
| 3 | | | Cyclopenta[c]thiapyran | 134 | C8H6S | 000270-63-3 | 94 |
| 4 | | | Benzo[b]thiophene | 134 | C8H6S | 000095-15-8 | 91 |
| 5 | | | Benzo[b]thiophene | 134 | C8H6S | 000095-15-8 | 91 |



Data Path : Z:\voasrv\HPCHEM1\MSVOA_W\Data\VW051022\
 Data File : VW022951.D
 Acq On : 10 May 2022 13:06
 Operator : SY/VA
 Sample : N2746-02
 Misc : 5.51g/10mL/MSVOA_W/SOIL
 ALS Vial : 1 Sample Multiplier: 1

Instrument :
 MSVOA_W
 ClientSampleId :
 DBSK5

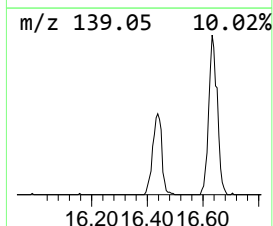
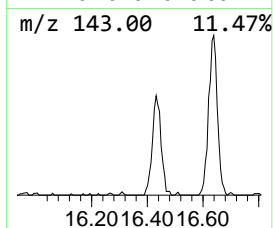
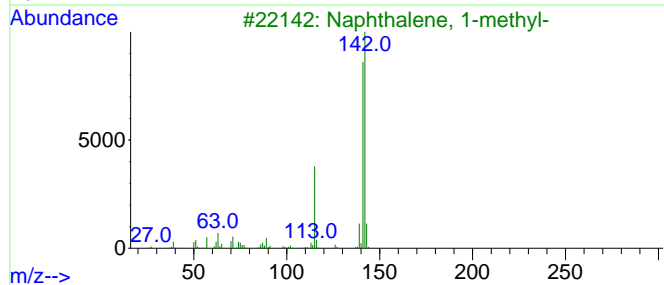
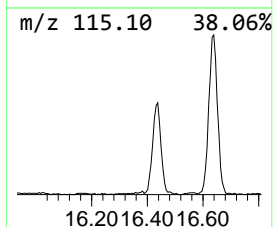
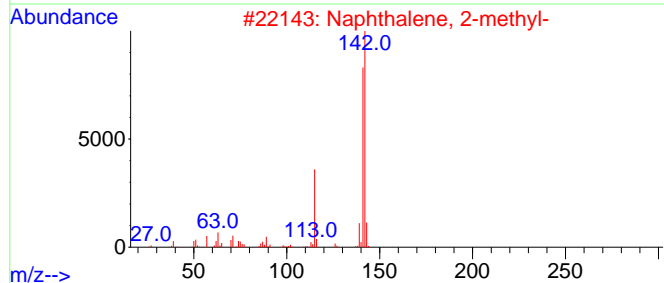
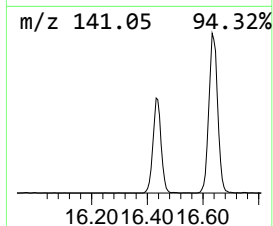
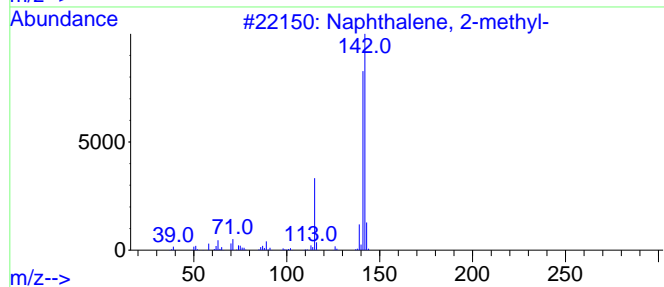
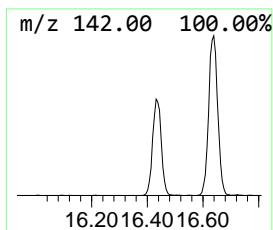
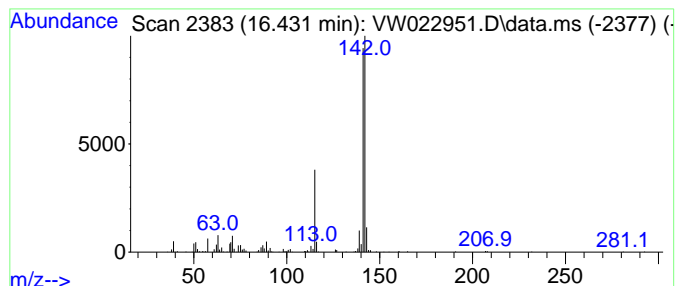
Quant Method : Z:\voasrv\HPCHEM1\MSVOA_W\Method\SFAMWLM050222SMA.M
 Quant Title : SFAM01.0

TIC Library : C:\Database\NIST20.L
 TIC Integration Parameters: LSCINT.P

 Peak Number 11 Benzocycloheptatriene Concentration Rank 7

| R.T. | EstConc | Area | Relative to ISTD | R.T. |
|--------|-----------|--------|------------------------|--------|
| 16.431 | 5.56 ug/L | 269320 | 1,4-Dichlorobenzene-d4 | 13.554 |

| Hit# | of | 5 | Tentative ID | MW | MolForm | CAS# | Qual |
|------|----|---|------------------------|-----|---------|-------------|------|
| 1 | | | Naphthalene, 2-methyl- | 142 | C11H10 | 000091-57-6 | 97 |
| 2 | | | Naphthalene, 2-methyl- | 142 | C11H10 | 000091-57-6 | 97 |
| 3 | | | Naphthalene, 1-methyl- | 142 | C11H10 | 000090-12-0 | 96 |
| 4 | | | Naphthalene, 1-methyl- | 142 | C11H10 | 000090-12-0 | 94 |
| 5 | | | Benzocycloheptatriene | 142 | C11H10 | 000264-09-5 | 91 |



Data Path : Z:\voasrv\HPCHEM1\MSVOA_W\Data\VW051022\
 Data File : VW022951.D
 Acq On : 10 May 2022 13:06
 Operator : SY/VA
 Sample : N2746-02
 Misc : 5.51g/10mL/MSVOA_W/SOIL
 ALS Vial : 1 Sample Multiplier: 1

Instrument :
 MSVOA_W
 ClientSampleId :
 DBSK5

Quant Method : Z:\voasrv\HPCHEM1\MSVOA_W\Method\SFAMWLM050222SMA.M
 Quant Title : SFAM01.0

TIC Library : C:\Database\NIST20.L
 TIC Integration Parameters: LSCINT.P

| TIC Top Hit name | RT | EstConc | Units | Response | --Internal Standard-- | | | |
|---------------------|--------|---------|-------|----------|-----------------------|--------|---------|------|
| | | | | | # | RT | Resp | Conc |
| Benzofuran | 13.475 | 3.0 | ug/L | 143609 | 3 | 13.554 | 1210780 | 25.0 |
| Indane | 13.755 | 2.1 | ug/L | 100305 | 3 | 13.554 | 1210780 | 25.0 |
| Indene | 13.938 | 21.9 | ug/L | 1062620 | 3 | 13.554 | 1210780 | 25.0 |
| Naphthalene, 1,... | 14.298 | 1.4 | ug/L | 65920 | 3 | 13.554 | 1210780 | 25.0 |
| 2-Propenal, 3-p... | 14.480 | 2.1 | ug/L | 101061 | 3 | 13.554 | 1210780 | 25.0 |
| Benzene, 1-ethe... | 14.804 | 1.3 | ug/L | 61008 | 3 | 13.554 | 1210780 | 25.0 |
| Hexa-2,4-diyne-1... | 14.950 | 32.2 | ug/L | 1558360 | 3 | 13.554 | 1210780 | 25.0 |
| Azulene | 15.358 | 121.4 | ug/L | 5880580 | 3 | 13.554 | 1210780 | 25.0 |
| Benzo[b]thiophene | 15.456 | 5.9 | ug/L | 285605 | 3 | 13.554 | 1210780 | 25.0 |
| Benzocyclohepta... | 16.431 | 5.6 | ug/L | 269320 | 3 | 13.554 | 1210780 | 25.0 |