

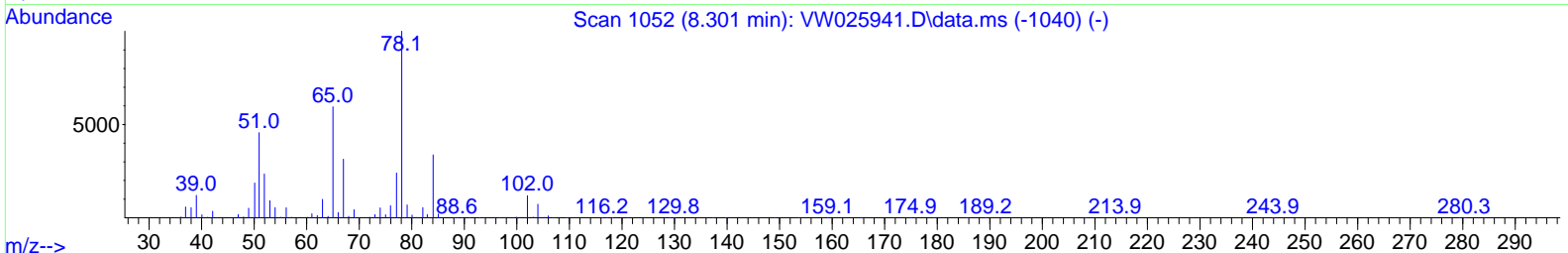
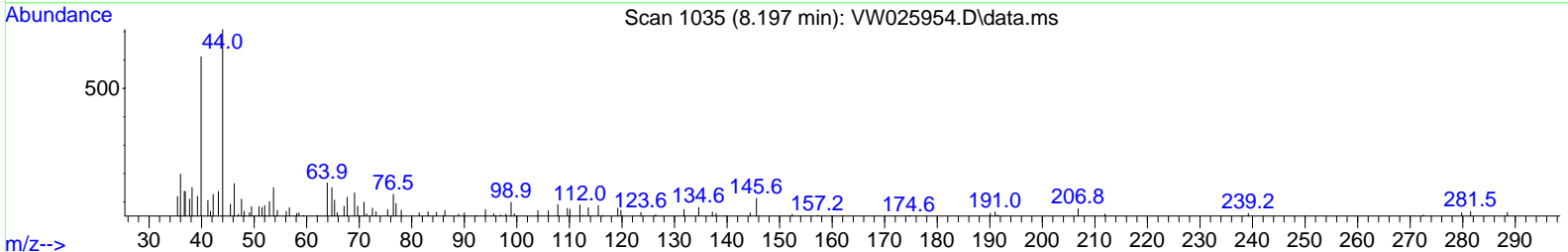
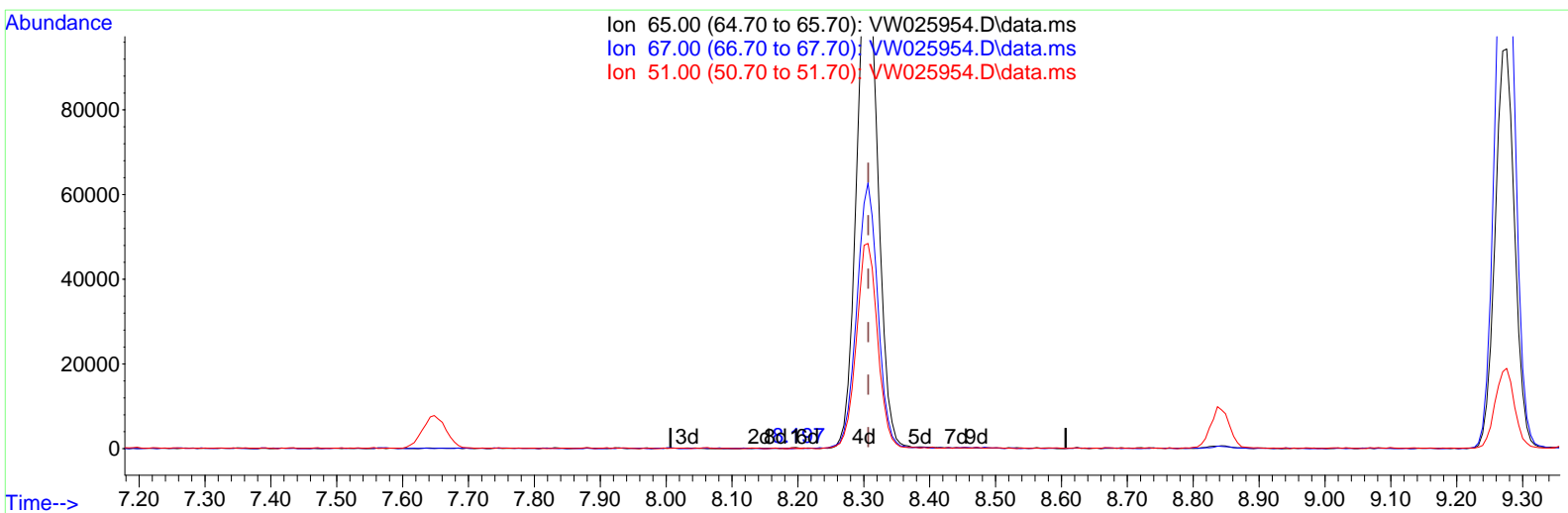
Data Path : Z:\voasrv\HPCHEM1\MSVOA\_W\Data\VW051123\  
 Data File : VW025954.D  
 Acq On : 11 May 2023 14:15  
 Operator : SY/MD  
 Sample : 02689-22RE  
 Misc : 3.89g/10mL/MSVOA\_W/SOIL  
 ALS Vial : 1 Sample Multiplier: 1

**Instrument :**  
 MSVOA\_W  
**ClientSampleId :**  
 JREP4

**Manual IntegrationsAPPROVED**

Reviewed By :Semsettin Yesilyurt 05/12/2023  
 Supervised By :Mahesh Dadoda 05/12/2023

Quant Time: May 12 05:38:35 2023  
 Quant Method : Z:\voasrv\HPCHEM1\MSVOA\_W\Method\SFAMWLM050123SMA.M  
 Quant Title : SFAM01.0  
 QLast Update : Fri May 05 23:47:36 2023  
 Response via : Initial Calibration



TIC: VW025954.D\data.ms

(26) 1,2-Dichloroethane-d4 (S)

8.197min (-0.110) 0.01 ug/L

response 207

Ion	Exp%	Act%
65.00	100.00	100.00
67.00	52.90	60.87
51.00	112.30	83.09
0.00	0.00	0.00

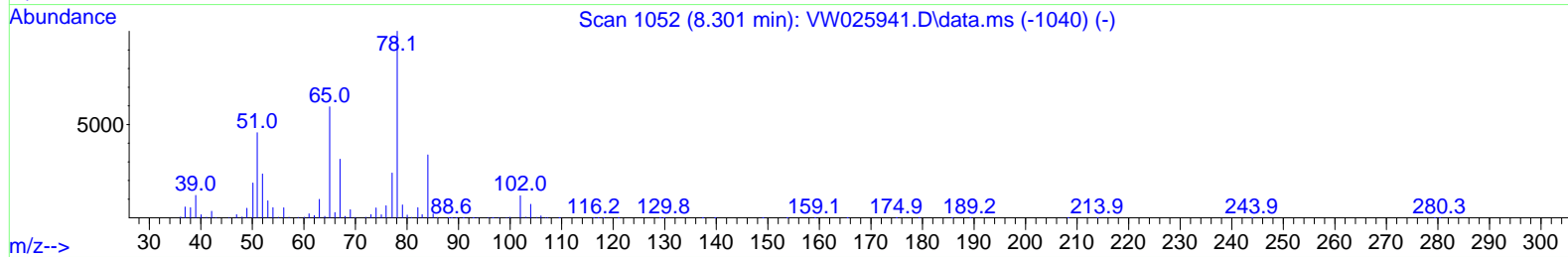
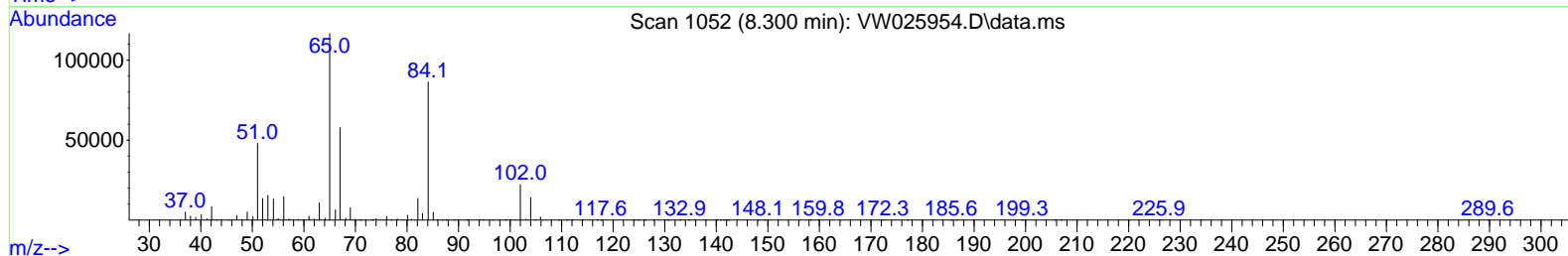
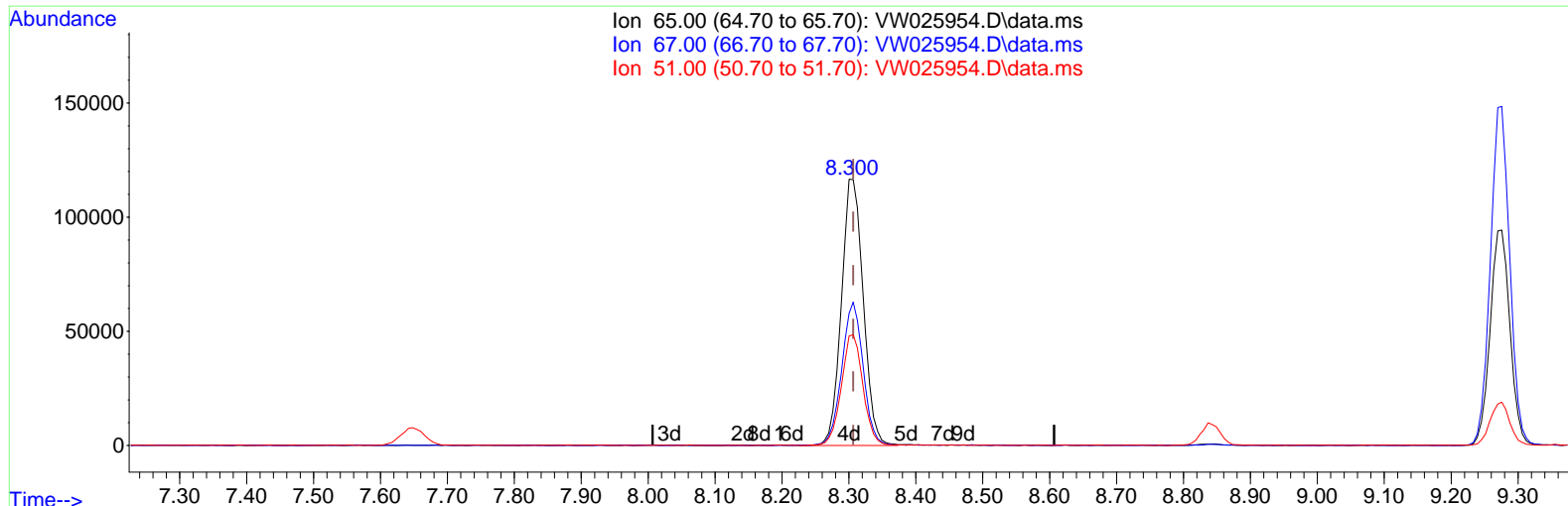
Data Path : Z:\voasrv\HPCHEM1\MSVOA\_W\Data\VW051123\  
 Data File : VW025954.D  
 Acq On : 11 May 2023 14:15  
 Operator : SY/MD  
 Sample : 02689-22RE  
 Misc : 3.89g/10mL/MSVOA\_W/SOIL  
 ALS Vial : 1 Sample Multiplier: 1

Instrument :  
 MSVOA\_W  
 ClientSampleId :  
 JREP4

Manual Integrations APPROVED

Reviewed By : Semsettin Yesilyurt 05/12/2023  
 Supervised By : Mahesh Dadoda 05/12/2023

Quant Time: May 12 05:38:35 2023  
 Quant Method : Z:\voasrv\HPCHEM1\MSVOA\_W\Method\SFAMWLM050123SMA.M  
 Quant Title : SFAM01.0  
 QLast Update : Fri May 05 23:47:36 2023  
 Response via : Initial Calibration



TIC: VW025954.D\data.ms

(26) 1,2-Dichloroethane-d4 (S)

8.300min (-0.006) 19.02 ug/L m

response 264588

Ion	Exp%	Act%
65.00	100.00	100.00
67.00	52.90	0.05#
51.00	112.30	0.07#
0.00	0.00	0.00

Data Path : Z:\voasrv\HPCHEM1\MSVOA\_W\Data\VW051123\  
 Data File : VW025954.D  
 Acq On : 11 May 2023 14:15  
 Operator : SY/MD  
 Sample : 02689-22RE  
 Misc : 3.89g/10mL/MSVOA\_W/SOIL  
 ALS Vial : 1 Sample Multiplier: 1

Instrument :  
 MSVOA\_W  
 ClientSampleId :  
 JREP4

## Manual Integrations APPROVED

Reviewed By : Semsettin Yesilyurt 05/12/2023  
 Supervised By : Mahesh Dadoda 05/12/2023

Quant Time: May 12 05:38:35 2023  
 Quant Method : Z:\voasrv\HPCHEM1\MSVOA\_W\Method\SFAMWLM050123SMA.M  
 Quant Title : SFAM01.0  
 QLast Update : Fri May 05 23:47:36 2023  
 Response via : Initial Calibration

Compound	R.T.	QIon	Response	Conc	Units	Dev(Min)
Internal Standards						
1) 1,4-Difluorobenzene	8.843	114	853149	25.000	ug/L	0.00
28) Chlorobenzene-d5	11.629	117	584082	25.000	ug/L	0.00
58) 1,4-Dichlorobenzene-d4	13.555	152	158346	25.000	ug/L	0.00
System Monitoring Compounds						
4) Vinyl Chloride-d3	2.362	65	227106	18.785	ug/L	0.00
Spiked Amount	25.000	Range 30 - 150	Recovery =	75.160%		
7) Chloroethane-d5	2.899	69	154600	17.249	ug/L	0.00
Spiked Amount	25.000	Range 30 - 150	Recovery =	69.000%		
11) 1,1-Dichloroethene-d2	4.021	65	107926	17.828	ug/L	0.00
Spiked Amount	25.000	Range 45 - 110	Recovery =	71.320%		
21) 2-Butanone-d5	7.081	46	130202	32.577	ug/L	0.00
Spiked Amount	50.000	Range 20 - 135	Recovery =	65.160%		
24) Chloroform-d	7.648	84	459508	18.679	ug/L	0.00
Spiked Amount	25.000	Range 40 - 150	Recovery =	74.720%		
26) 1,2-Dichloroethane-d4	8.300	65	264588m	19.020	ug/L	0.00
Spiked Amount	25.000	Range 70 - 130	Recovery =	76.080%		
32) Benzene-d6	8.276	84	918069	24.055	ug/L	0.00
Spiked Amount	25.000	Range 20 - 135	Recovery =	96.240%		
36) 1,2-Dichloropropane-d6	9.276	67	300095	24.576	ug/L	0.00
Spiked Amount	25.000	Range 70 - 120	Recovery =	98.320%		
41) Toluene-d8	10.324	98	682148	20.044	ug/L	0.00
Spiked Amount	25.000	Range 30 - 130	Recovery =	80.160%		
43) trans-1,3-Dichloroprop...	10.574	79	98469	19.894	ug/L	0.00
Spiked Amount	25.000	Range 30 - 135	Recovery =	79.560%		
47) 2-Hexanone-d5	10.922	63	91060	43.732	ug/L	0.00
Spiked Amount	50.000	Range 20 - 135	Recovery =	87.460%		
56) 1,1,2,2-Tetrachloroeth...	12.690	84	170568	18.327	ug/L	0.00
Spiked Amount	25.000	Range 45 - 120	Recovery =	73.320%		
66) 1,2-Dichlorobenzene-d4	13.848	152	104635	18.127	ug/L	0.00
Spiked Amount	25.000	Range 75 - 120	Recovery =	72.520%#		
Target Compounds						
13) Acetone	4.130	43	70390	19.862	ug/L	99
16) Methylene chloride	4.917	84	82948	4.714	ug/L	89
22) 2-Butanone	7.179	43	40905	8.359	ug/L	95
42) Toluene	10.385	91	184783	4.475	ug/L	98

(#) = qualifier out of range (m) = manual integration (+) = signals summed

Data Path : Z:\voasrv\HPCHEM1\MSVOA\_W\Data\VW051123\  
 Data File : VW025954.D  
 Acq On : 11 May 2023 14:15  
 Operator : SY/MD  
 Sample : 02689-22RE  
 Misc : 3.89g/10mL/MSVOA\_W/SOIL  
 ALS Vial : 1 Sample Multiplier: 1

Instrument :  
 MSVOA\_W  
 ClientSampleId :  
 JREP4

Manual Integrations APPROVED

Reviewed By : Semsettin Yesilyurt 05/12/2023  
 Supervised By : Mahesh Dadoda 05/12/2023

Quant Time: May 12 05:38:35 2023  
 Quant Method : Z:\voasrv\HPCHEM1\MSVOA\_W\Method\SFAMWLM050123SMA.M  
 Quant Title : SFAM01.0  
 QLast Update : Fri May 05 23:47:36 2023  
 Response via : Initial Calibration

