

Data Path : W:\HPCHEM1\MSVOA_W\DATA\VW051518\
 Data File : VW002562.D
 Acq On : 15 May 2018 20:20
 Operator : JC/SY
 Sample : J2898-01
 Misc : 4.44G/10ML/MSVOA_W/SOIL
 ALS Vial : 17 Sample Multiplier: 1

Instrument :
 MSVOA_W
 ClientSampled :
 SP-01

Quant Time: May 16 05:48:01 2018
 Quant Method : W:\HPCHEM1\MSVOA_W\METHOD\82W051518S.M
 Quant Title : SW846 8260
 QLast Update : Tue May 15 03:32:11 2018
 Response via : Initial Calibration

Internal Standards	R.T.	QIon	Response	Conc	Units	Dev(Min)
1) Pentafluorobenzene	7.95	168	129027	50.00	ug/l	0.00
34) 1,4-Difluorobenzene	8.85	114	203281	50.00	ug/l	0.00
63) Chlorobenzene-d5	11.64	117	172063	50.00	ug/l	0.00
72) 1,4-Dichlorobenzene-d4	13.57	152	74357	50.00	ug/l	0.00

System Monitoring Compounds

33) 1,2-Dichloroethane-d4	8.31	65	62585	46.94	ug/l	0.00
Spiked Amount			50.000			
			Recovery	=	93.88%	
35) Dibromofluoromethane	7.88	113	9251	7.17	ug/l	0.00
Spiked Amount			50.000			
			Recovery	=	14.34%	
50) Toluene-d8	10.33	98	174934	35.65	ug/l	0.00
Spiked Amount			50.000			
			Recovery	=	71.30%	
62) 4-Bromofluorobenzene	12.63	95	58795	32.77	ug/l	0.00
Spiked Amount			50.000			
			Recovery	=	65.54%	

Target Compounds

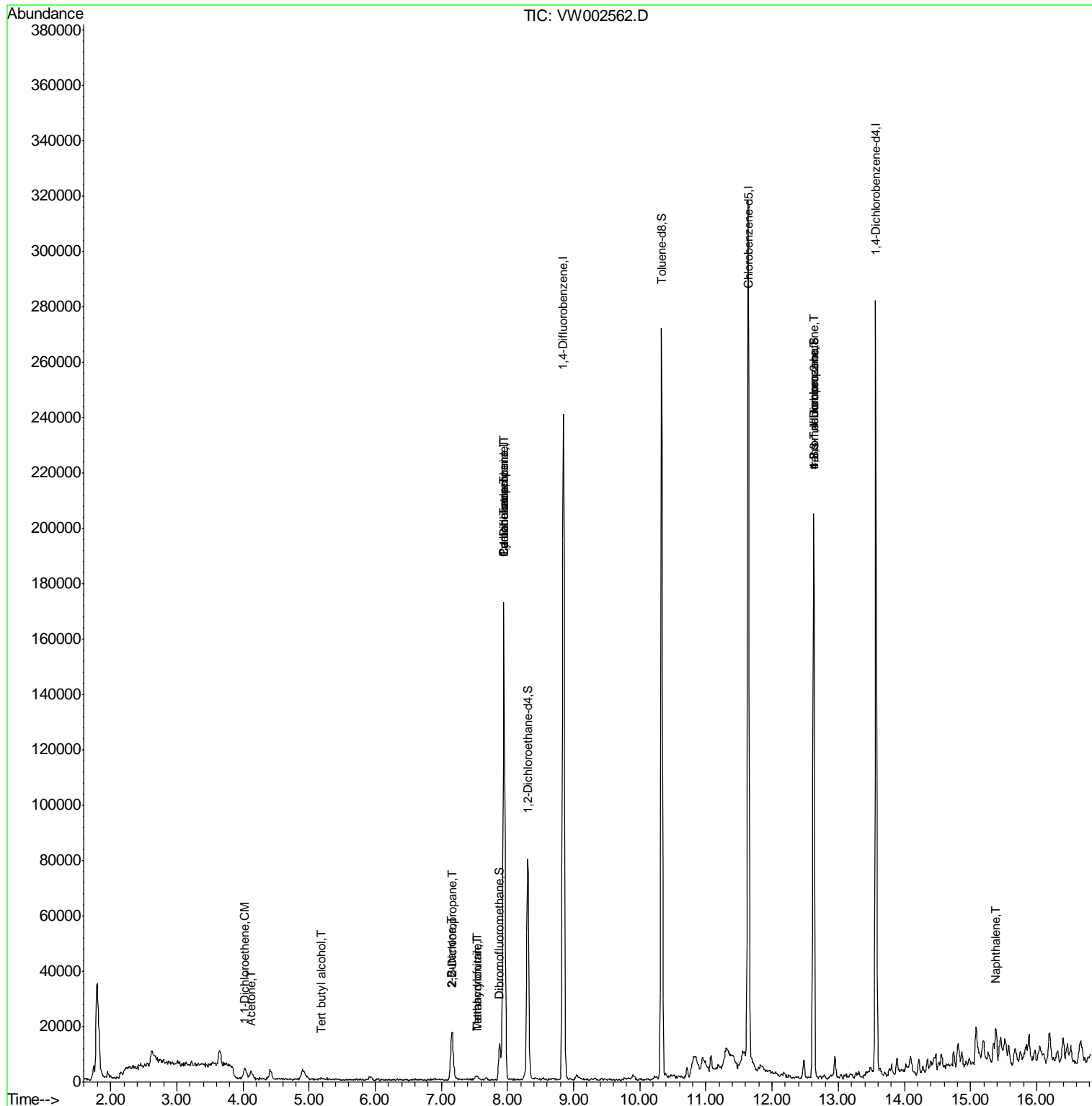
	R.T.	QIon	Response	Conc	Units	Qvalue
11) Tert butyl alcohol	5.19	59	619	6.04	ug/l	100
12) 1,1-Dichloroethene	4.03	96	2602	2.41	ug/l #	77
16) Acetone	4.12	43	4555	16.18	ug/l	99
20) Methylene Chloride	4.92	84	2044	Below Cal	#	75
25) 2-Butanone	7.15	43	1557	3.91	ug/l #	49
26) 2,2-Dichloropropane	7.16	77	1244	1.04	ug/l #	51
29) Tetrahydrofuran	7.53	42	719	2.89	ug/l	91
31) Cyclohexane	7.95	56	3075	1.62	ug/l #	36
36) 1,1-Dichloropropene	7.95	75	9671	5.39	ug/l #	51
38) Carbon Tetrachloride	7.95	117	12184	6.94	ug/l #	20
41) Methacrylonitrile	7.54	41	879	1.77	ug/l #	39
76) 1,2,3-Trichloropropane	12.63	75	30370	43.21	ug/l #	100
81) trans-1,4-Dichloro-2-buten	12.63	75	30370	117.81	ug/l #	8
95) Naphthalene	15.38	128	10385	3.66	ug/l	97

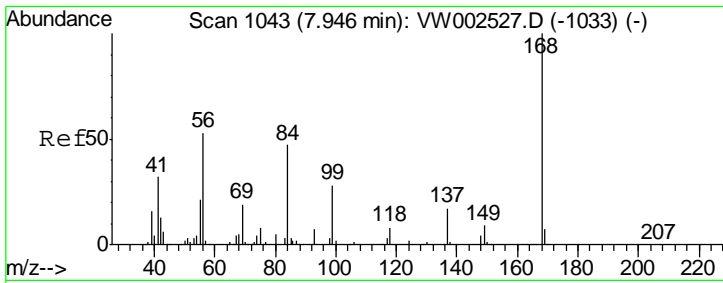
(#) = qualifier out of range (m) = manual integration (+) = signals summed

Data Path : W:\HPCHEM1\MSVOA_W\DATA\VW051518\
 Data File : VW002562.D
 Acq On : 15 May 2018 20:20
 Operator : JC/SY
 Sample : J2898-01
 Misc : 4.44G/10ML/MSVOA_W/SOIL
 ALS Vial : 17 Sample Multiplier: 1

Instrument :
 MSVOA_W
 Client Sampled :
 SP-01

Quant Time: May 16 05:48:01 2018
 Quant Method : W:\HPCHEM1\MSVOA_W\METHOD\82W051518S.M
 Quant Title : SW846 8260
 QLast Update : Tue May 15 03:32:11 2018
 Response via : Initial Calibration

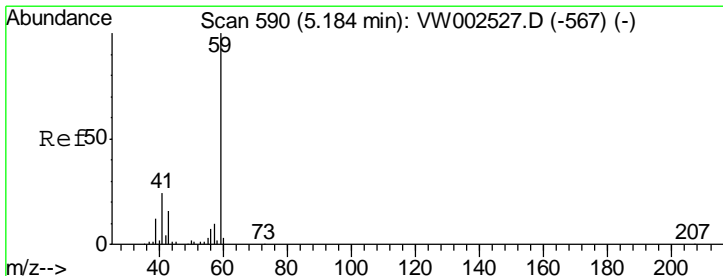
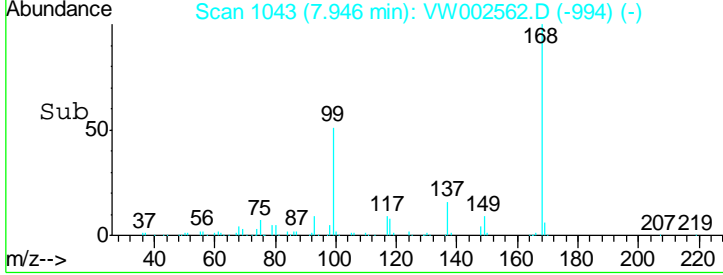
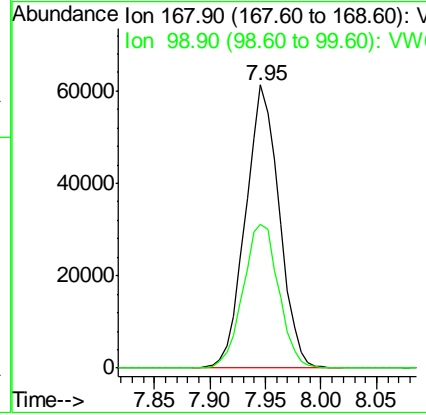
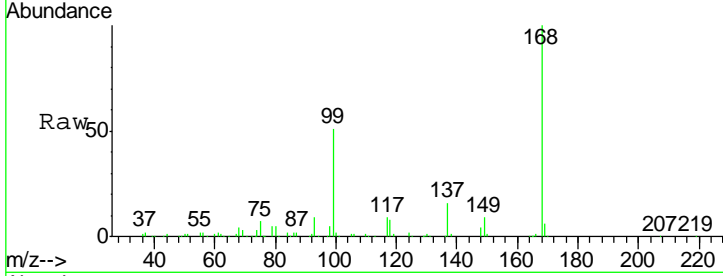




#1
 Pentafluorobenzene
 Concen: 50.00 ug/l
 RT: 7.95 min Scan# 1043
 Delta R.T. -0.00 min
 Lab File: VW002562.D
 Acq: 15 May 2018 20:20

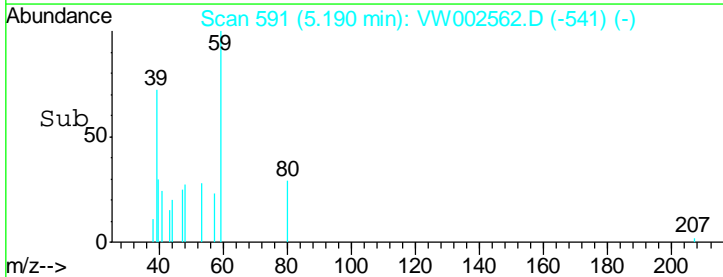
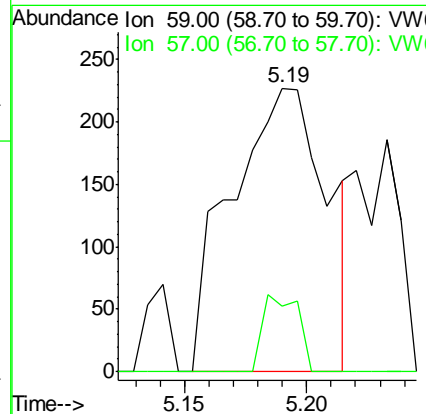
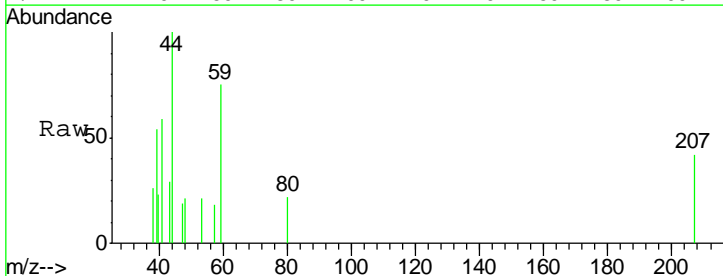
Instrument :
 MSVOA_W
 ClientSampled :
 SP-01

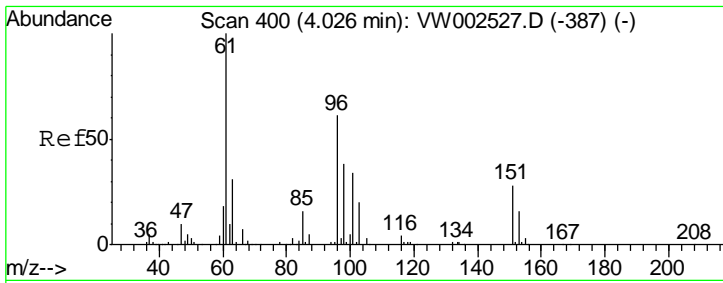
Tgt Ion: 168 Resp: 129027
 Ion Ratio Lower Upper
 168 100
 99 50.8 42.6 64.0



#11
 Tert butyl alcohol
 Concen: 6.04 ug/l
 RT: 5.19 min Scan# 591
 Delta R.T. 0.01 min
 Lab File: VW002562.D
 Acq: 15 May 2018 20:20

Tgt Ion: 59 Resp: 619
 Ion Ratio Lower Upper
 59 100
 57 10.2 8.2 12.4

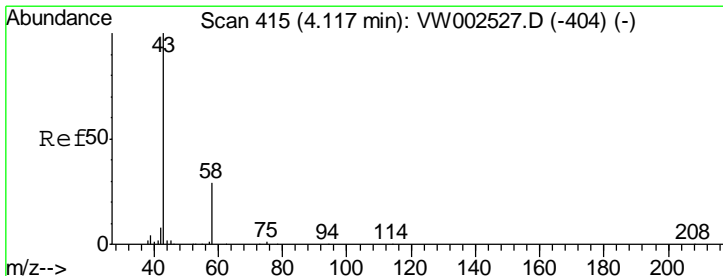
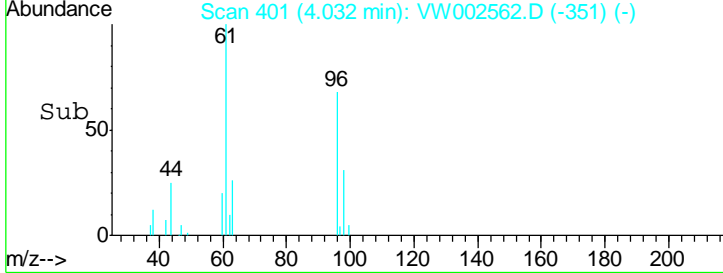
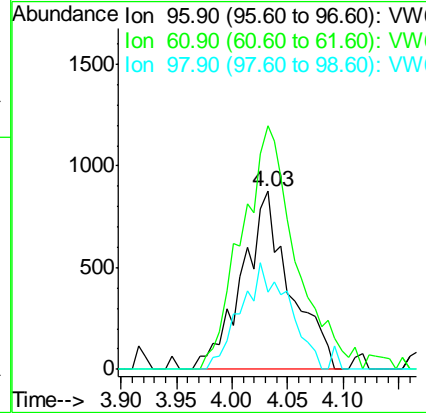
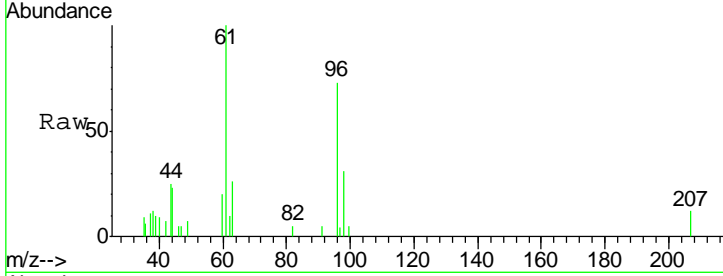




#12
 1,1-Dichloroethene
 Concen: 2.41 ug/l
 RT: 4.03 min Scan# 401
 Delta R.T. 0.01 min
 Lab File: VW002562.D
 Acq: 15 May 2018 20:20

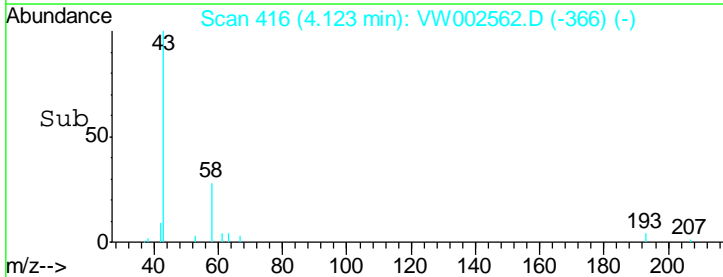
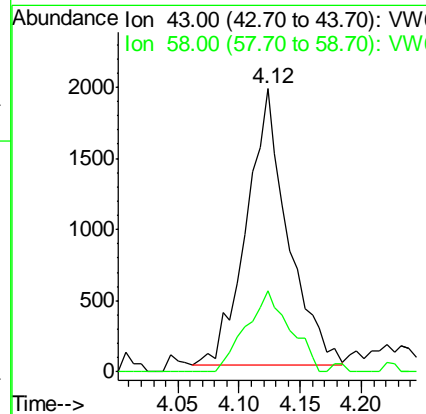
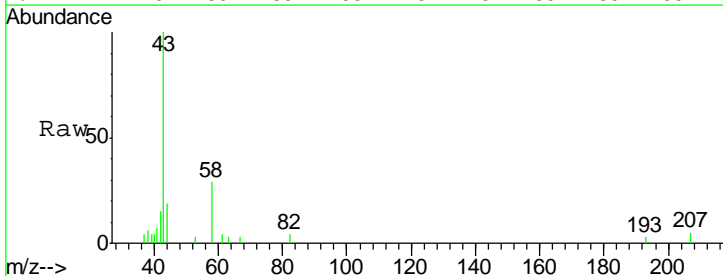
Instrument :
 MSVOA_W
 ClientSampled :
 SP-01

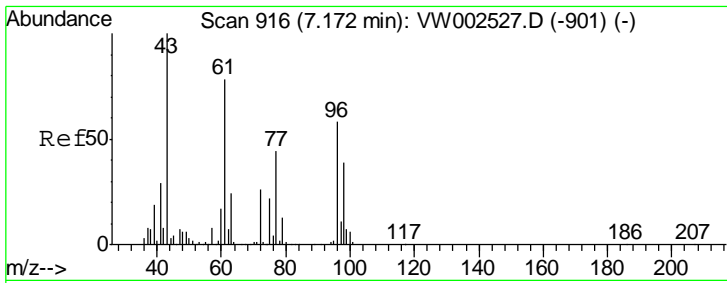
Tgt Ion	Resp	Lower	Upper
96	2602		
61	136.6	132.2	198.2
98	43.0	50.6	76.0#



#16
 Acetone
 Concen: 16.18 ug/l
 RT: 4.12 min Scan# 416
 Delta R.T. 0.01 min
 Lab File: VW002562.D
 Acq: 15 May 2018 20:20

Tgt Ion	Resp	Lower	Upper
43	4555		
58	29.5	23.4	35.0

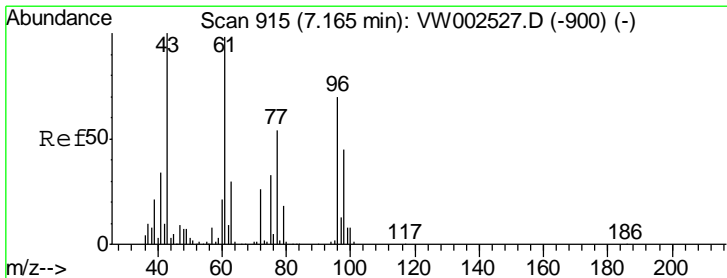
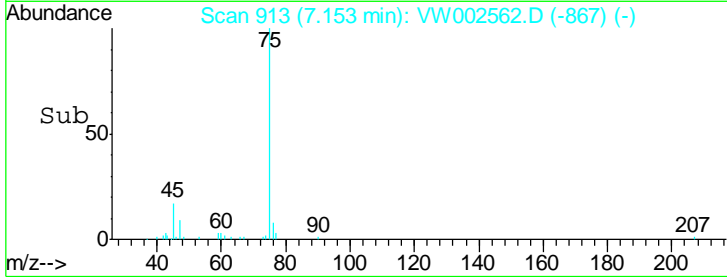
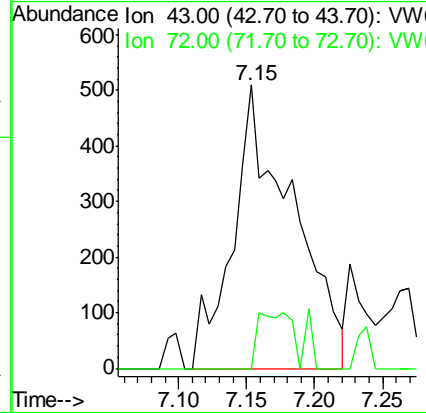
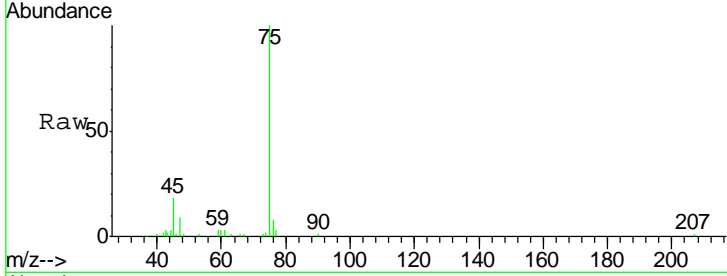




#25
 2-Butanone
 Concen: 3.91 ug/l
 RT: 7.15 min Scan# 913
 Delta R.T. -0.02 min
 Lab File: VW002562.D
 Acq: 15 May 2018 20:20

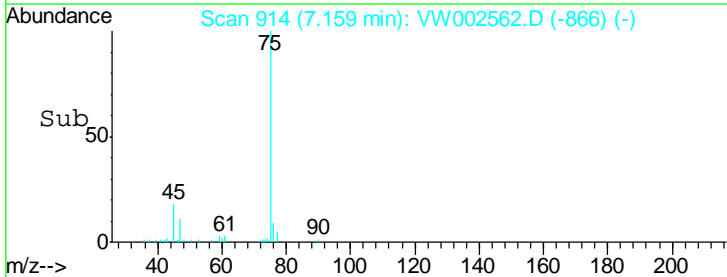
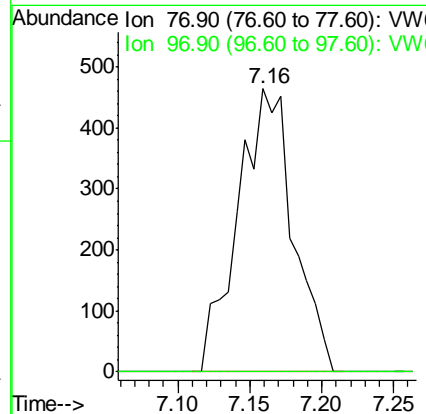
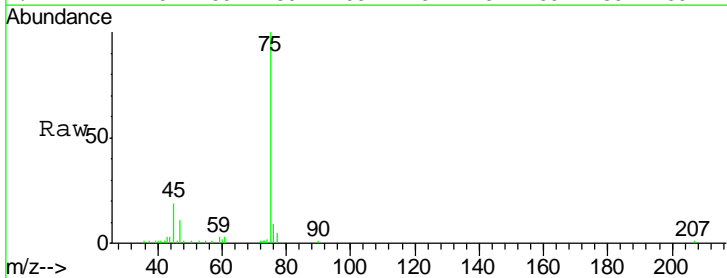
Instrument :
 MSVOA_W
 ClientSampled :
 SP-01

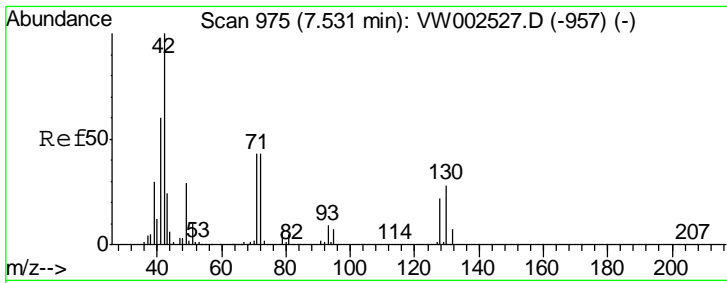
Tgt Ion: 43 Resp: 1557
 Ion Ratio Lower Upper
 43 100
 72 0.0 20.9 31.3#



#26
 2,2-Dichloropropane
 Concen: 1.04 ug/l
 RT: 7.16 min Scan# 914
 Delta R.T. -0.01 min
 Lab File: VW002562.D
 Acq: 15 May 2018 20:20

Tgt Ion: 77 Resp: 1244
 Ion Ratio Lower Upper
 77 100
 97 0.0 12.1 36.3#

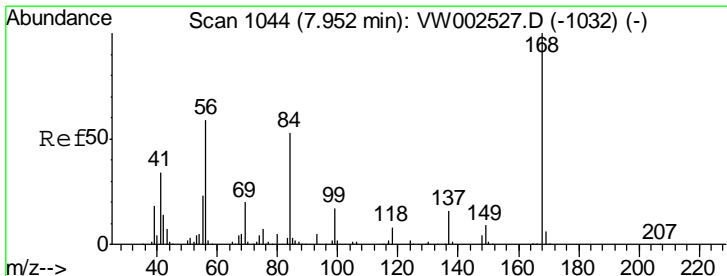
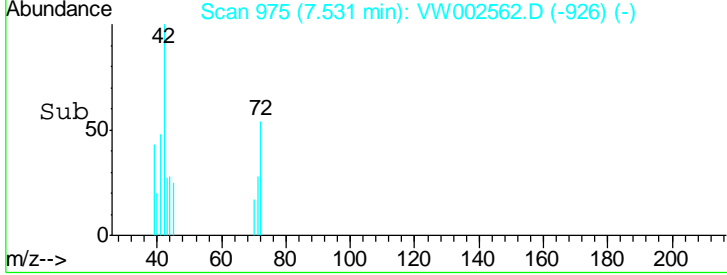
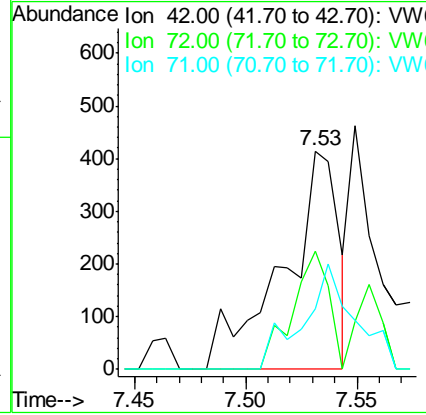
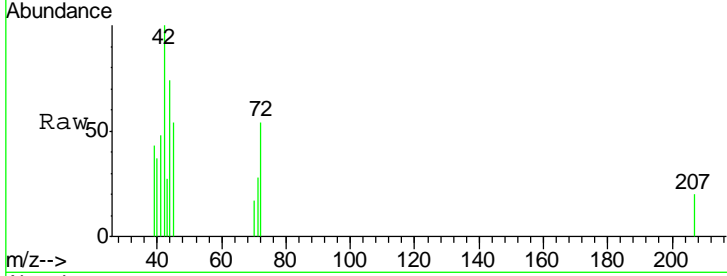




#29
 Tetrahydrofuran
 Concen: 2.89 ug/l
 RT: 7.53 min Scan# 975
 Delta R.T. -0.00 min
 Lab File: VW002562.D
 Acq: 15 May 2018 20:20

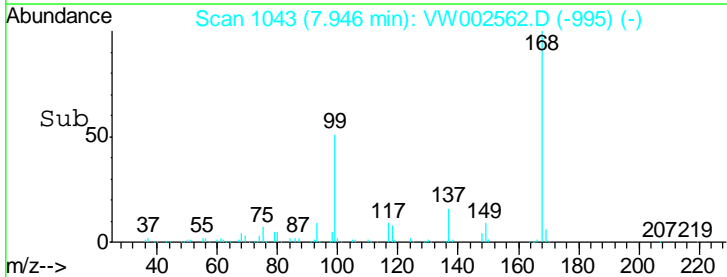
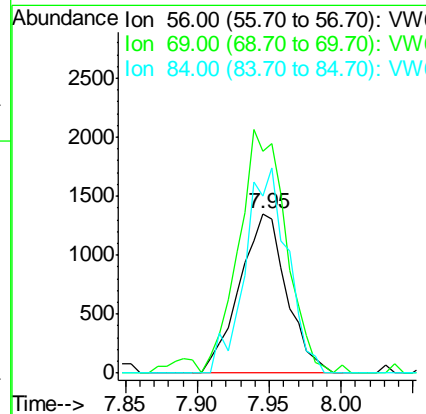
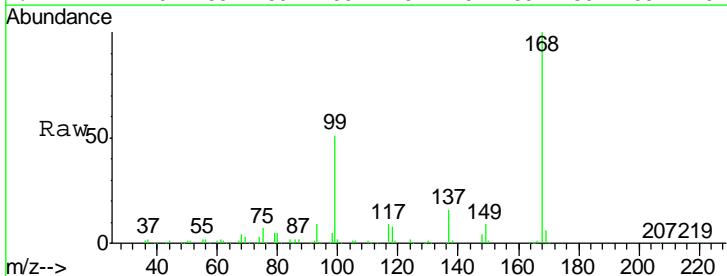
Instrument :
 MSVOA_W
 ClientSampled :
 SP-01

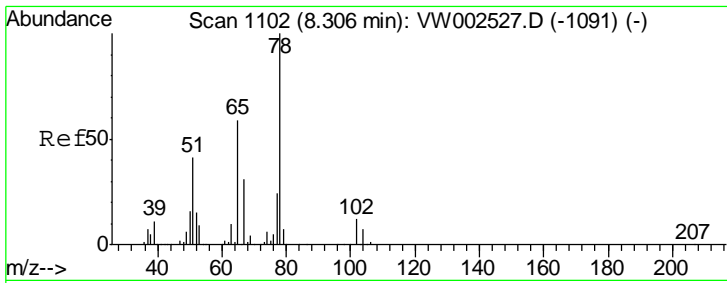
Tgt Ion	Resp	Lower	Upper
42	100		
72	35.5	35.0	52.4
71	45.1	33.0	49.6



#31
 Cyclohexane
 Concen: 1.62 ug/l
 RT: 7.95 min Scan# 1043
 Delta R.T. -0.01 min
 Lab File: VW002562.D
 Acq: 15 May 2018 20:20

Tgt Ion	Resp	Lower	Upper
56	100		
69	133.8	27.0	40.4#
84	110.7	72.2	108.2#

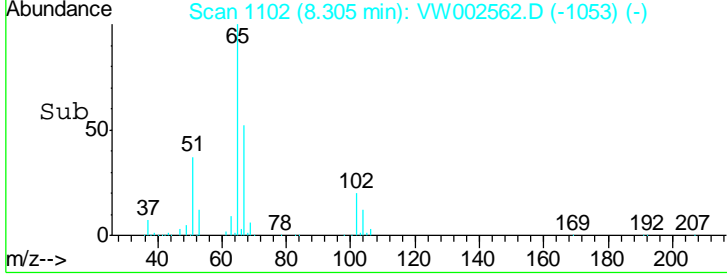
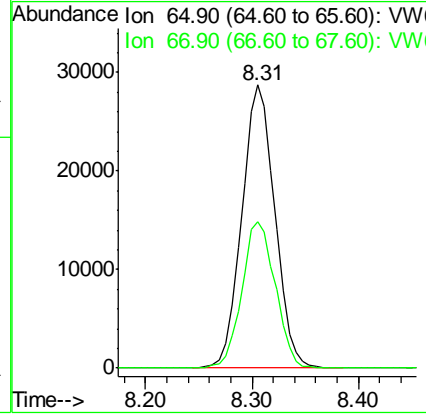
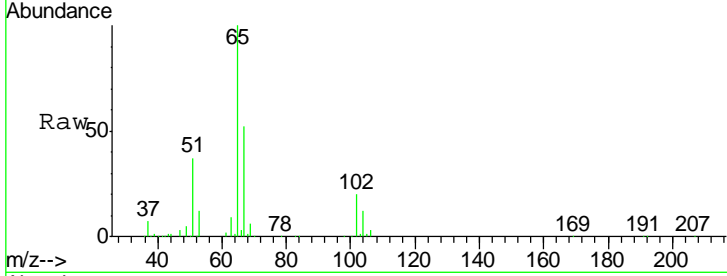




#33
 1,2-Dichloroethane-d4
 Concen: 46.94 ug/l
 RT: 8.31 min Scan# 1102
 Delta R.T. -0.00 min
 Lab File: VW002562.D
 Acq: 15 May 2018 20:20

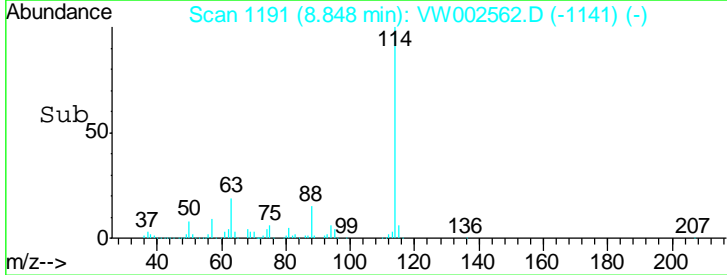
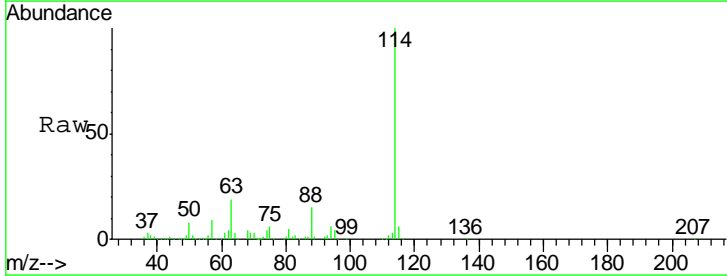
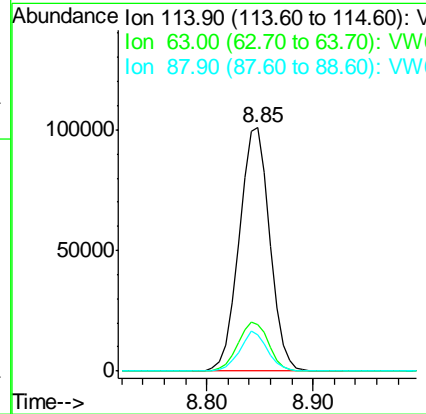
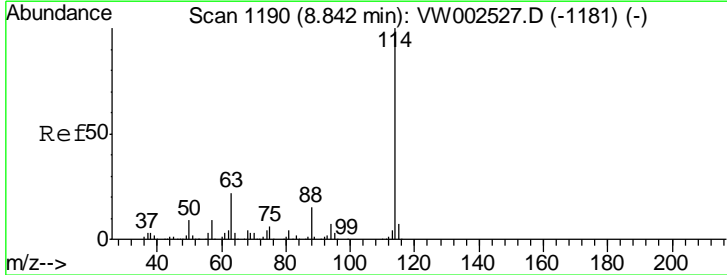
Instrument :
 MSVOA_W
 ClientSampled :
 SP-01

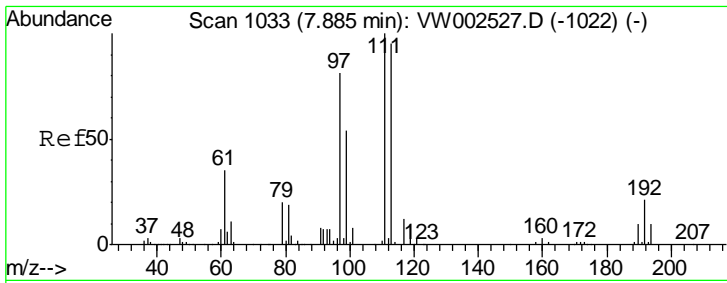
Tgt Ion: 65 Resp: 62585
 Ion Ratio Lower Upper
 65 100
 67 52.4 0.0 104.4



#34
 1,4-Difluorobenzene
 Concen: 50.00 ug/l
 RT: 8.85 min Scan# 1191
 Delta R.T. 0.01 min
 Lab File: VW002562.D
 Acq: 15 May 2018 20:20

Tgt Ion: 114 Resp: 203281
 Ion Ratio Lower Upper
 114 100
 63 19.2 0.0 43.2
 88 15.1 0.0 29.2

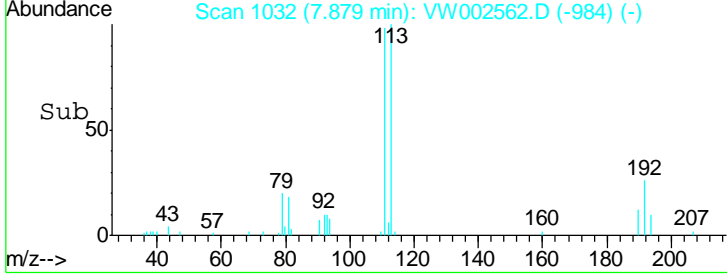
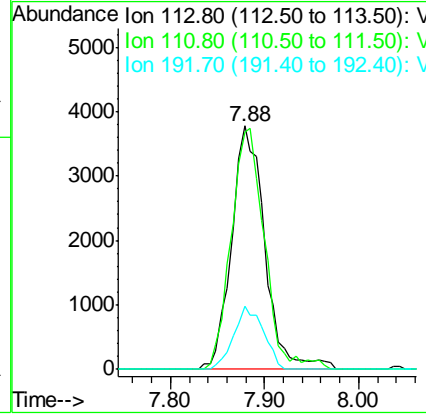
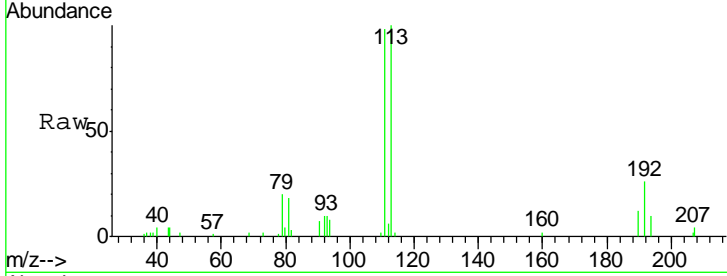




#35
 Dibromofluoromethane
 Concen: 7.17 ug/l
 RT: 7.88 min Scan# 1032
 Delta R.T. -0.01 min
 Lab File: VW002562.D
 Acq: 15 May 2018 20:20

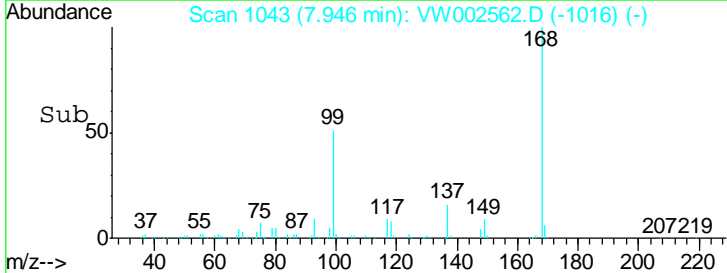
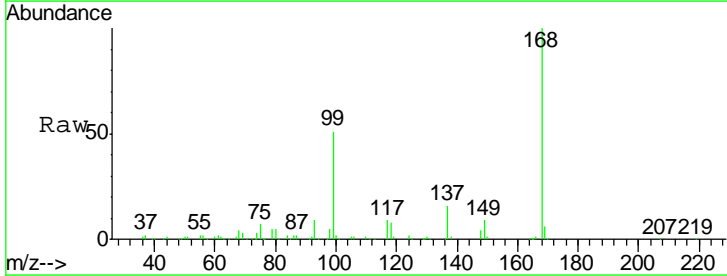
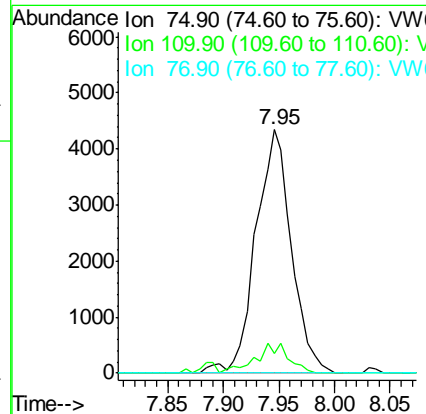
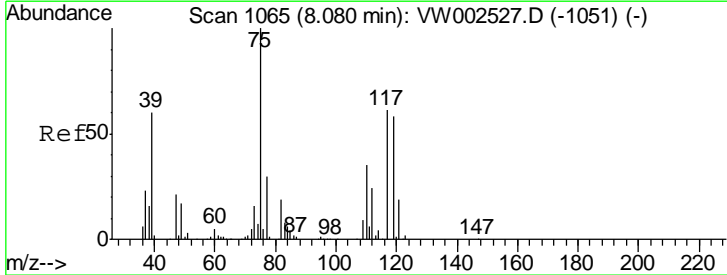
Instrument : MSVOA_W
 ClientSampled : SP-01

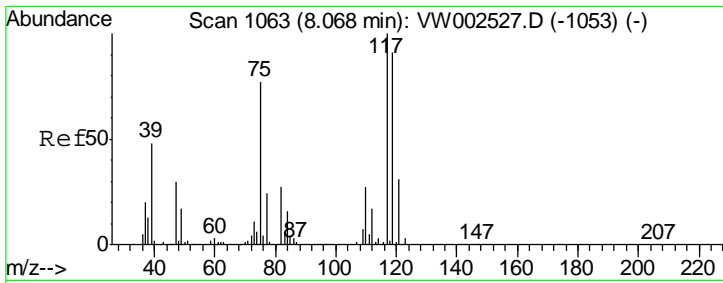
Tgt Ion	Resp	Lower	Upper
113	9251		
111	99.4	81.8	122.8
192	23.1	17.5	26.3



#36
 1,1-Dichloropropene
 Concen: 5.39 ug/l
 RT: 7.95 min Scan# 1043
 Delta R.T. -0.13 min
 Lab File: VW002562.D
 Acq: 15 May 2018 20:20

Tgt Ion	Resp	Lower	Upper
75	9671		
110	10.9	17.8	53.5#
77	0.0	24.5	36.7#

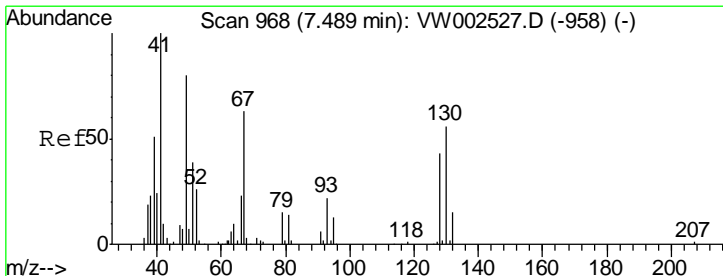
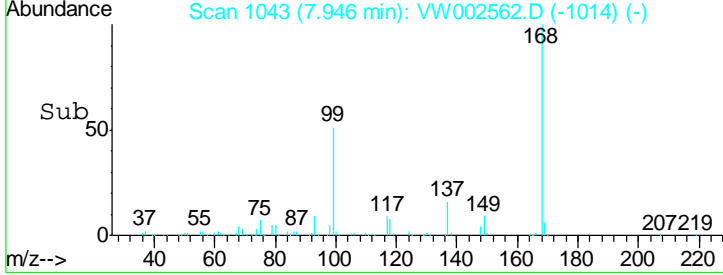
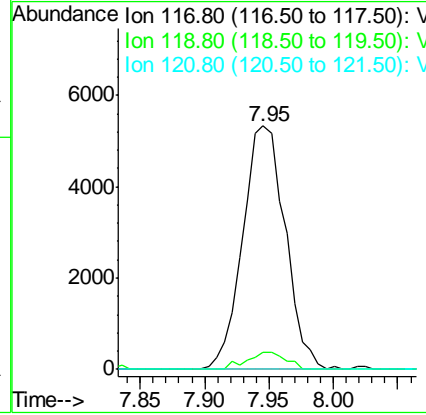
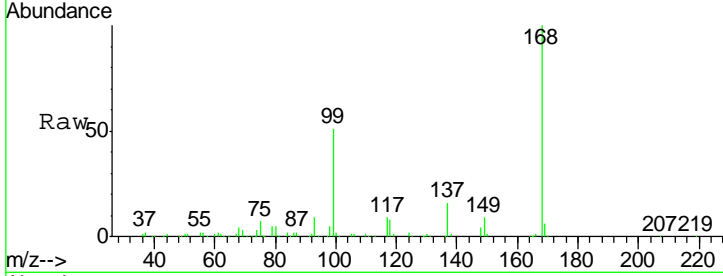




#38
 Carbon Tetrachloride
 Concen: 6.94 ug/l
 RT: 7.95 min Scan# 1043
 Delta R.T. -0.12 min
 Lab File: VW002562.D
 Acq: 15 May 2018 20:20

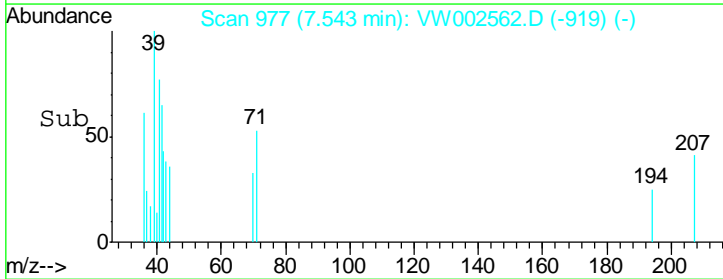
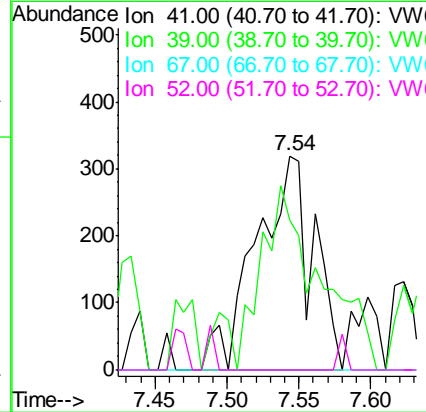
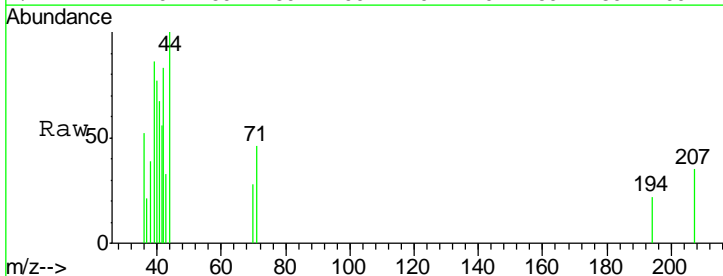
Instrument :
 MSVOA_W
 ClientSampled :
 SP-01

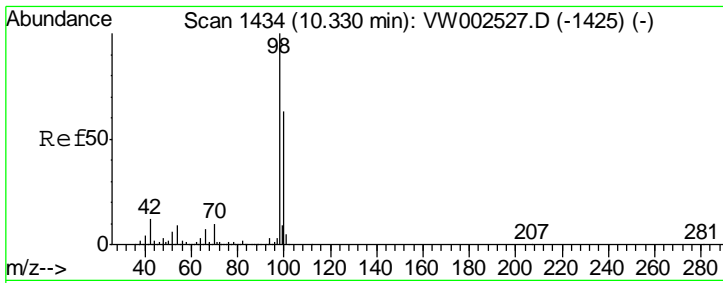
Tgt Ion	Resp	Lower	Upper
117	12184		
119	7.2	73.1	109.7#
121	0.0	24.4	36.6#



#41
 Methacrylonitrile
 Concen: 1.77 ug/l
 RT: 7.54 min Scan# 977
 Delta R.T. 0.05 min
 Lab File: VW002562.D
 Acq: 15 May 2018 20:20

Tgt Ion	Resp	Lower	Upper
41	879		
39	88.7	51.8	77.8#
67	0.0	59.9	89.9#
52	0.0	26.6	39.8#

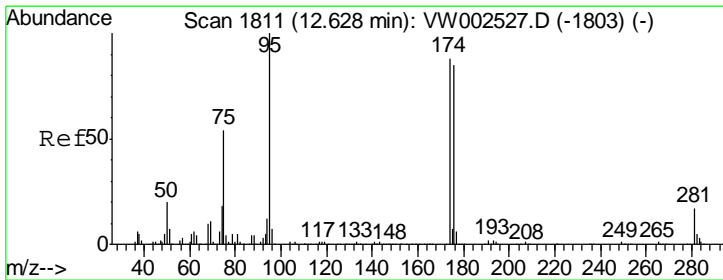
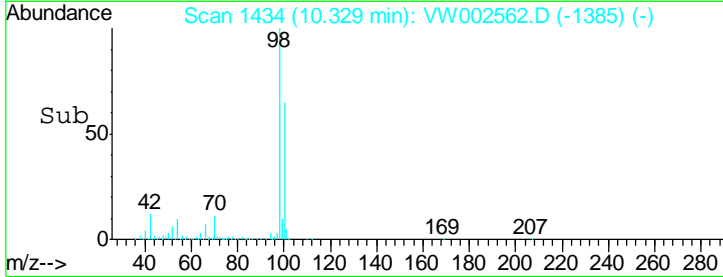
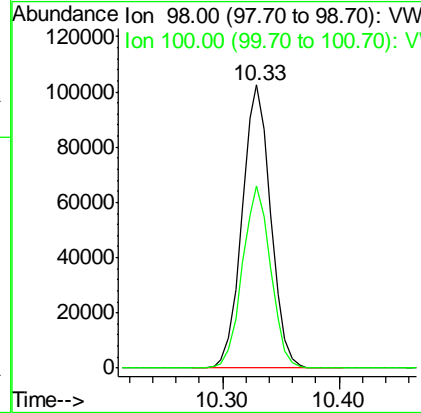
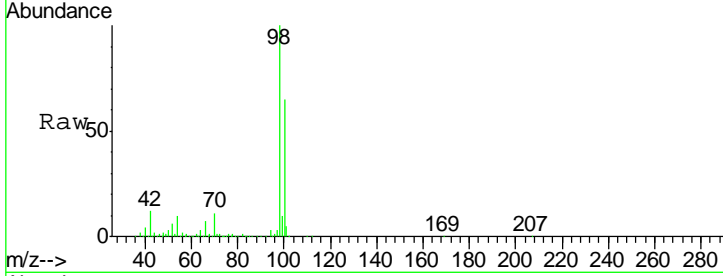




#50
 Toluene-d8
 Concen: 35.65 ug/l
 RT: 10.33 min Scan# 1434
 Delta R.T. -0.00 min
 Lab File: VW002562.D
 Acq: 15 May 2018 20:20

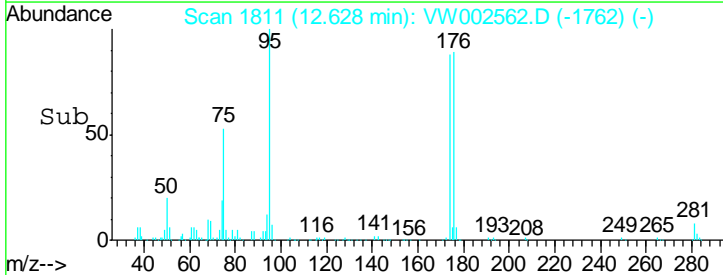
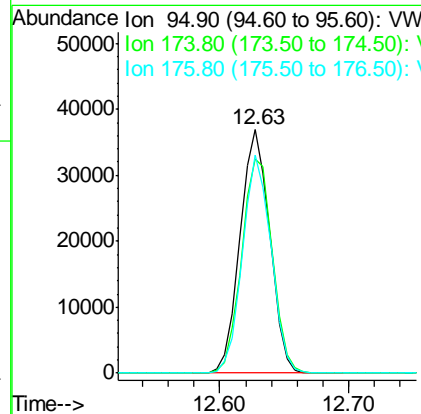
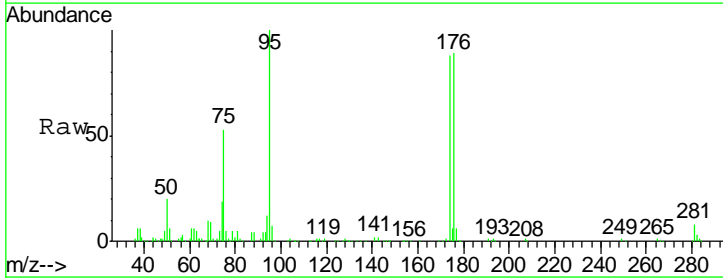
Instrument : MSVOA_W
 ClientSampled : SP-01

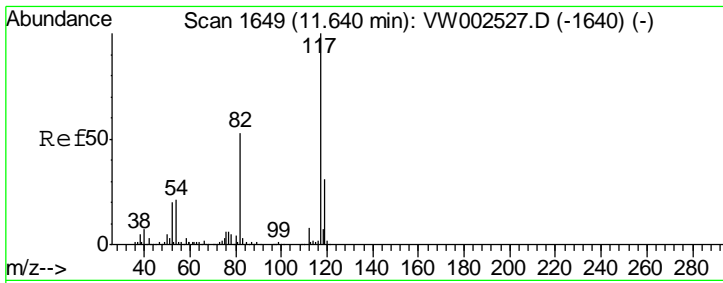
Tgt Ion	Resp	Lower	Upper
98	174934		
100	63.6	51.0	76.4



#62
 4-Bromofluorobenzene
 Concen: 32.77 ug/l
 RT: 12.63 min Scan# 1811
 Delta R.T. -0.00 min
 Lab File: VW002562.D
 Acq: 15 May 2018 20:20

Tgt Ion	Resp	Lower	Upper
95	58795		
174	90.9	0.0	176.6
176	86.3	0.0	172.2

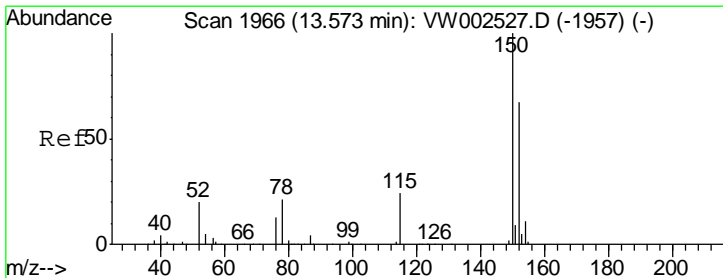
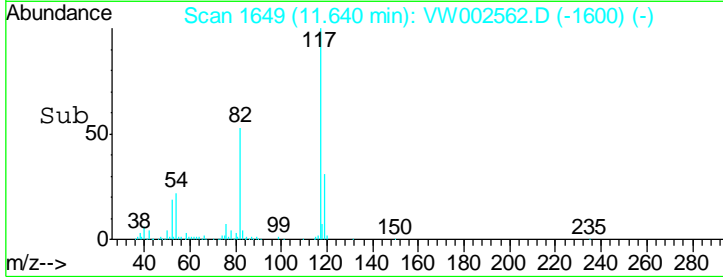
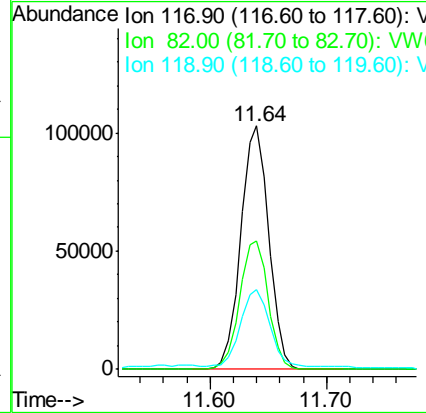
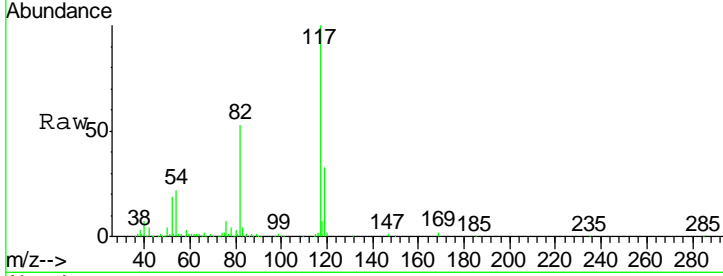




#63
 Chlorobenzene-d5
 Concen: 50.00 ug/l
 RT: 11.64 min Scan# 1649
 Delta R.T. -0.00 min
 Lab File: VW002562.D
 Acq: 15 May 2018 20:20

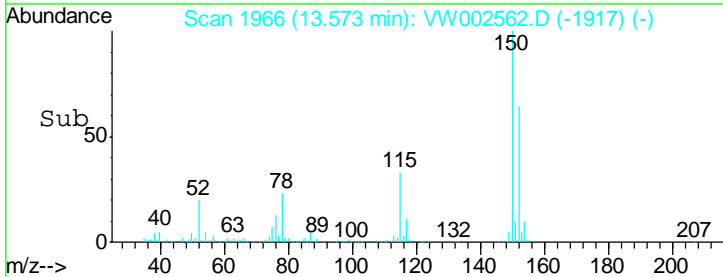
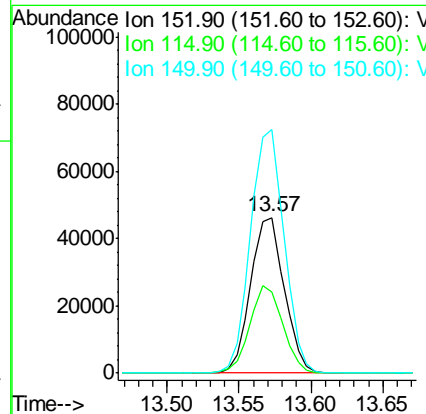
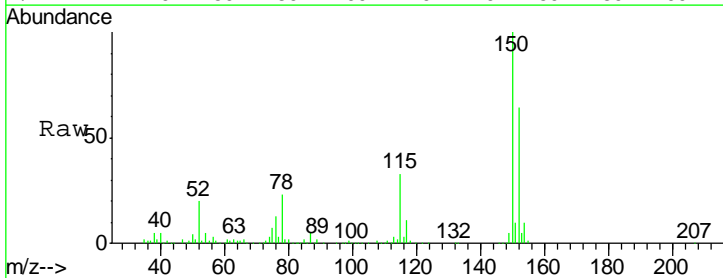
Instrument :
 MSVOA_W
 ClientSampled :
 SP-01

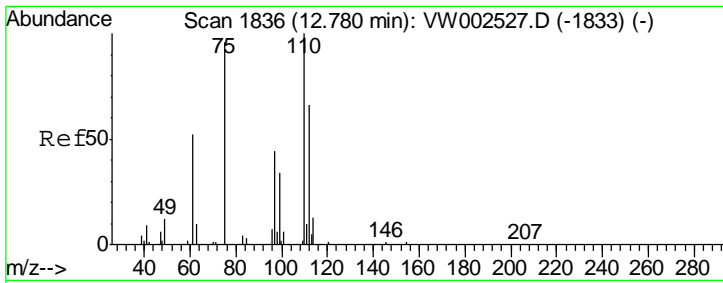
Tgt Ion	Resp	Lower	Upper
117	172063		
82	52.7	42.6	64.0
119	31.6	25.0	37.6



#72
 1,4-Dichlorobenzene-d4
 Concen: 50.00 ug/l
 RT: 13.57 min Scan# 1966
 Delta R.T. -0.00 min
 Lab File: VW002562.D
 Acq: 15 May 2018 20:20

Tgt Ion	Resp	Lower	Upper
152	74357		
115	55.0	28.0	84.0
150	157.2	0.0	345.4

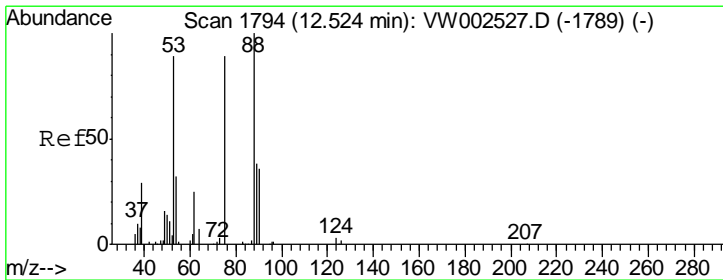
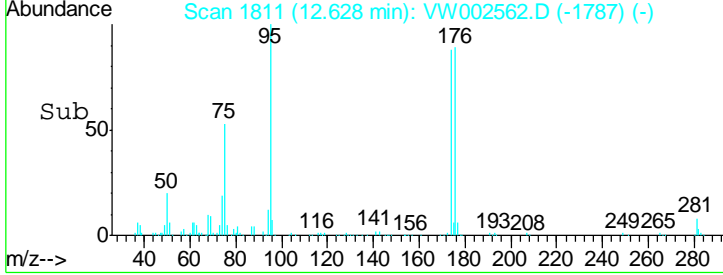
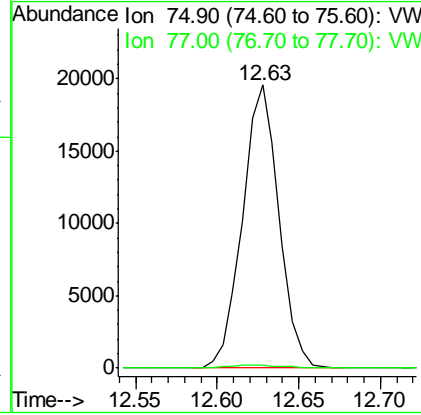
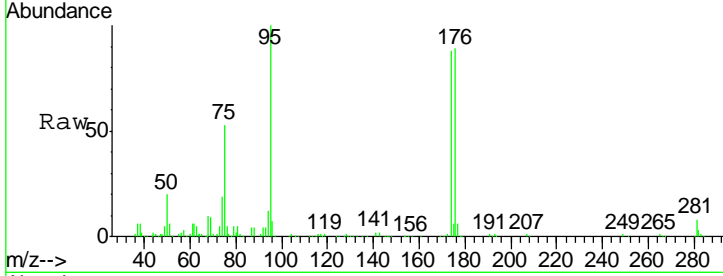




#76
 1,2,3-Trichloropropane
 Concen: 43.21 ug/l
 RT: 12.63 min Scan# 1811
 Delta R.T. -0.15 min
 Lab File: VW002562.D
 Acq: 15 May 2018 20:20

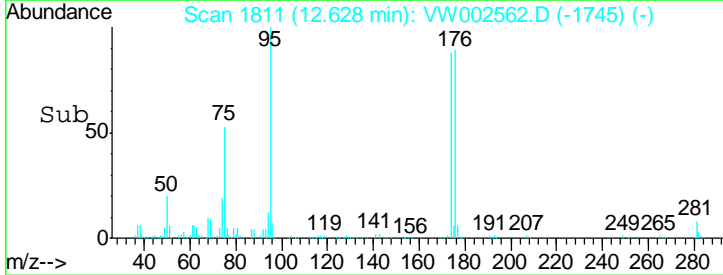
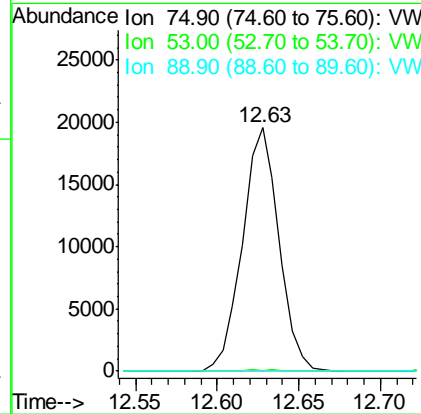
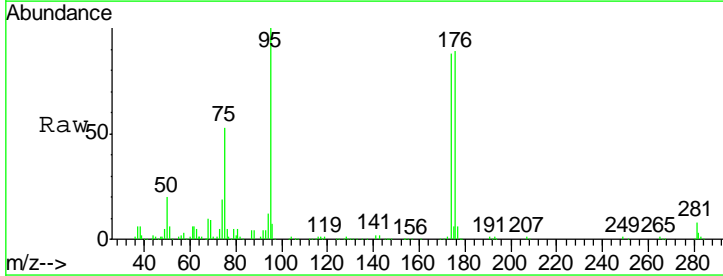
Instrument : MSVOA_W
 ClientSampled : SP-01

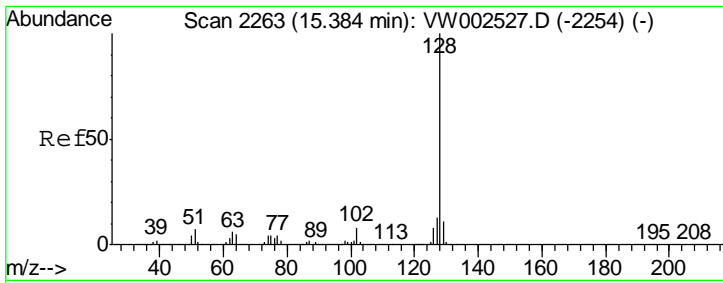
Tgt Ion	Resp	Lower	Upper
75	100		
77	1.4	0.0	0.0#



#81
 trans-1,4-Dichloro-2-butene
 Concen: 117.81 ug/l
 RT: 12.63 min Scan# 1811
 Delta R.T. 0.10 min
 Lab File: VW002562.D
 Acq: 15 May 2018 20:20

Tgt Ion	Resp	Lower	Upper
75	100		
53	0.6	82.6	124.0#
89	0.0	39.2	58.8#





#95
 Naphthalene
 Concen: 3.66 ug/l
 RT: 15.38 min Scan# 2262
 Delta R.T. -0.01 min
 Lab File: VW002562.D
 Acq: 15 May 2018 20:20

Instrument : MSVOA_W
 ClientSampled : SP-01

Tgt Ion: 128 Resp: 10385

Ion	Ratio	Lower	Upper
128	100		
127	13.8	10.6	15.8
129	12.9	8.9	13.3

