

Data Path : Z:\VOASRV\HPCHEM1\MSVOA W\DATA\VW051520\  
 Data File : VW015438.D  
 Acq On : 15 May 2020 17:04  
 Operator : SY/VA  
 Sample : L2679-05  
 Misc : 7.57G/5ML/MSVOA W/SOIL  
 ALS Vial : 12 Sample Multiplier: 1

Instrument :  
 MSVOA\_W  
 ClientSampled :

Quant Time: May 16 02:53:22 2020  
 Quant Method : Z:\VOASRV\HPCHEM1\MSVOA\_W\METHOD\82W050620S.M  
 Quant Title : SW846 8260  
 QLast Update : Tue May 05 18:41:17 2020  
 Response via : Initial Calibration

Internal Standards	R.T.	QIon	Response	Conc	Units	Dev(Min)
1) Pentafluorobenzene	7.95	168	200346	50.00	ug/l	0.00
34) 1,4-Difluorobenzene	8.84	114	341188	50.00	ug/l	0.00
63) Chlorobenzene-d5	11.63	117	285927	50.00	ug/l	0.00
72) 1,4-Dichlorobenzene-d4	13.56	152	143491	50.00	ug/l	0.00

## System Monitoring Compounds

33) 1,2-Dichloroethane-d4	8.31	65	114373	51.93	ug/l	0.00
Spiked Amount	50.000		Recovery	=	103.86%	
35) Dibromofluoromethane	7.88	113	104258	53.24	ug/l	0.00
Spiked Amount	50.000		Recovery	=	106.48%	
50) Toluene-d8	10.32	98	570507	70.40	ug/l	0.00
Spiked Amount	50.000		Recovery	=	140.80%	
62) 4-Bromofluorobenzene	12.62	95	215217	71.92	ug/l	0.00
Spiked Amount	50.000		Recovery	=	143.84%	

## Target Compounds

						Qvalue
11) Tert butyl alcohol	5.17	59	1048	8.252	ug/l #	71
13) Acrolein	4.09	56	5276	32.532	ug/l #	77
15) Acrylonitrile	5.43	53	9213	22.489	ug/l #	41
16) Acetone	4.12	43	26093	76.267	ug/l #	81
20) Methylene Chloride	4.92	84	3756	1.683	ug/l #	45
25) 2-Butanone	7.18	43	12333	23.127	ug/l #	74
29) Tetrahydrofuran	7.54	42	780	2.223	ug/l #	34
30) Chloroform	7.62	83	9484	2.402	ug/l #	18
31) Cyclohexane	7.95	56	440607	109.177	ug/l	98
36) 1,1-Dichloropropene	7.95	75	17692	5.278	ug/l #	77
37) Ethyl Acetate	7.18	43	12333	9.482	ug/l #	70
38) Carbon Tetrachloride	7.95	117	20860	6.656	ug/l #	16
39) Methylcyclohexane	9.34	83	2192887	516.797	ug/l	96
41) Methacrylonitrile	7.52	41	3191	3.883	ug/l #	55
43) Isopropyl Acetate	8.42	43	152164	55.626	ug/l #	52
45) 1,2-Dichloropropane	9.34	63	25939	11.485	ug/l #	1
47) Bromodichloromethane	9.62	83	41379	13.517	ug/l #	74
48) Methyl methacrylate	9.51	41	191402	151.479	ug/l #	57
51) 4-Methyl-2-Pentanone	10.10	43	2978731	2323.554	ug/l #	42
55) 1,1,2-Trichloroethane	10.76	97	602777	379.478	ug/l #	20
56) Ethyl methacrylate	10.66	69	205893	94.339	ug/l #	10
58) 2-Chloroethyl Vinyl ether	9.90	63	1285	1.210	ug/l #	47
59) 2-Hexanone	10.93	43	978317	1127.847	ug/l #	30
60) Dibromochloromethane	11.04	129	4354	2.279	ug/l	76
65) Chlorobenzene	11.55	112	11374	2.018	ug/l #	43
67) Ethyl Benzene	11.73	91	115196	10.676	ug/l	99
69) o-Xylene	12.16	106	7840	2.080	ug/l #	1
73) Isopropylbenzene	12.46	105	1817182	169.630	ug/l	100
74) N-amyl acetate	12.26	43	1017247	401.718	ug/l #	64
75) 1,1,2,2-Tetrachloroethane	12.69	83	52096	31.087	ug/l #	43
76) 1,2,3-Trichloropropane	12.80	75	26353	22.325	ug/l #	100
78) n-propylbenzene	12.80	91	4279183	332.943	ug/l	98
79) 2-Chlorotoluene	12.80	91	4279183	590.640	ug/l #	43
80) 1,3,5-Trimethylbenzene	13.10	105	284154	31.491	ug/l	73

Data Path : Z:\VOASRV\HPCHEM1\MSVOA W\DATA\VW051520\  
 Data File : VW015438.D  
 Acq On : 15 May 2020 17:04  
 Operator : SY/VA  
 Sample : L2679-05  
 Misc : 7.57G/5ML/MSVOA W/SOIL  
 ALS Vial : 12 Sample Multiplier: 1

Instrument :  
 MSVOA\_W  
 ClientSampleId :

Quant Time: May 16 02:53:22 2020  
 Quant Method : Z:\VOASRV\HPCHEM1\MSVOA\_W\METHOD\82W050620S.M  
 Quant Title : SW846 8260  
 QLast Update : Tue May 05 18:41:17 2020  
 Response via : Initial Calibration

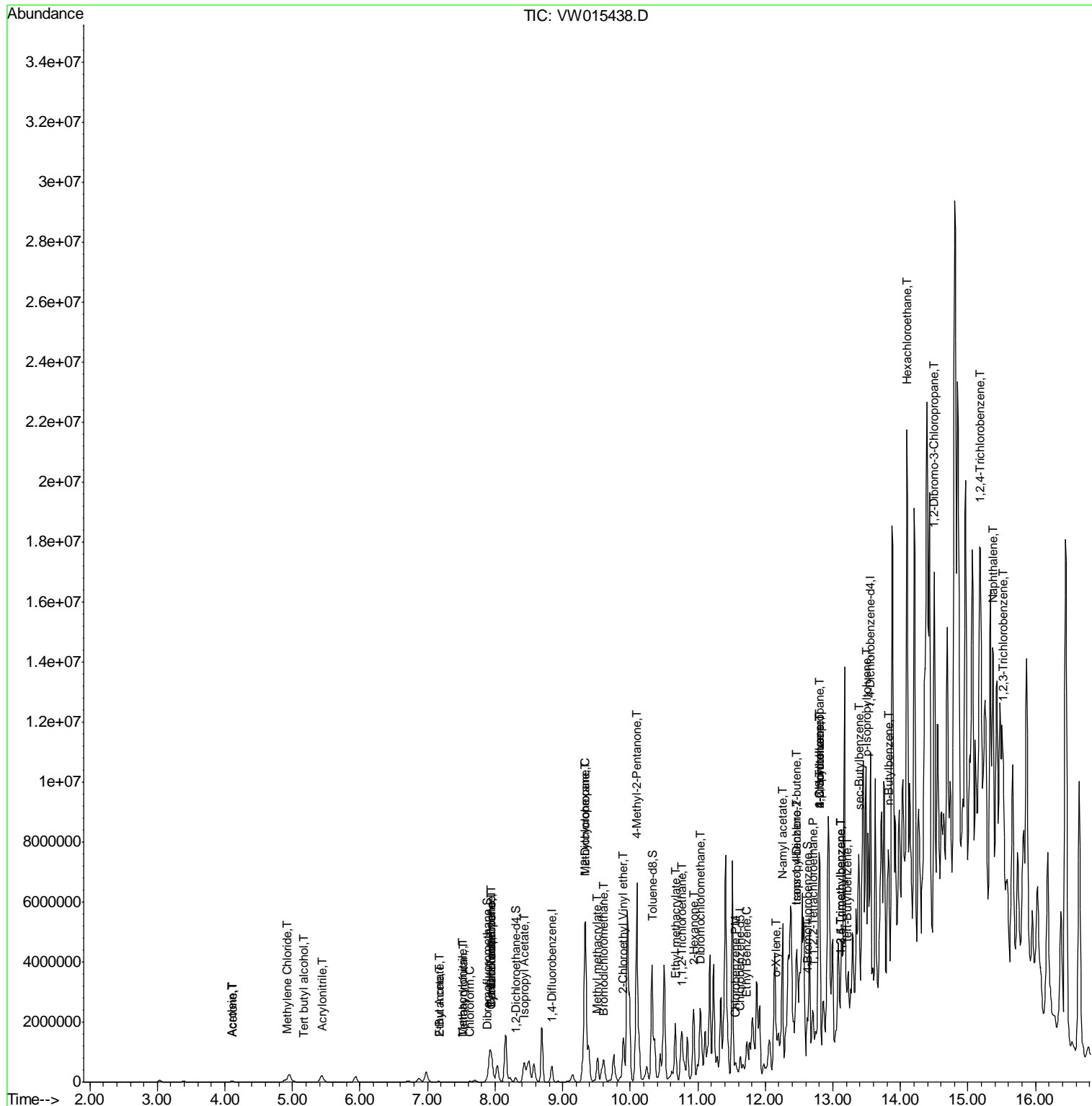
Internal Standards	R.T.	QIon	Response	Conc	Units	Dev(Min)
81) trans-1,4-Dichloro-2-buten	12.46	75	20594	34.509	ug/l #	60
82) 4-Chlorotoluene	12.80	91	4278720	557.268	ug/l #	43
83) tert-Butylbenzene	13.21	119	96929	12.589	ug/l	88
84) 1,2,4-Trimethylbenzene	13.10	105	284154	31.478	ug/l	78
85) sec-Butylbenzene	13.38	105	2686497	247.640	ug/l	87
86) p-Isopropyltoluene	13.50	119	119331	12.061	ug/l	97
89) n-Butylbenzene	13.82	91	2453934	253.345	ug/l #	84
90) Hexachloroethane	14.10	117	706120	387.277	ug/l #	14
92) 1,2-Dibromo-3-Chloropropan	14.50	75	18254	62.393	ug/l #	37
93) 1,2,4-Trichlorobenzene	15.17	180	35682	13.559	ug/l #	1
95) Naphthalene	15.37	128	7666099	1626.305	ug/l	97
96) 1,2,3-Trichlorobenzene	15.52	180	46544	20.584	ug/l #	1

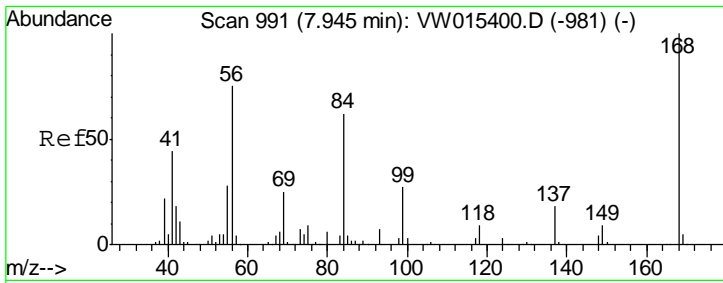
(#) = qualifier out of range (m) = manual integration (+) = signals summed

Data Path : Z:\VOASRV\HPCHEM1\MSVOA W\DATA\VW051520\  
 Data File : VW015438.D  
 Acq On : 15 May 2020 17:04  
 Operator : SY/VA  
 Sample : L2679-05  
 Misc : 7.57G/5ML/MSVOA W/SOIL  
 ALS Vial : 12 Sample Multiplier: 1

Instrument :  
 MSVOA\_W  
 Client Sampled :

Quant Time: May 16 02:53:22 2020  
 Quant Method : Z:\VOASRV\HPCHEM1\MSVOA\_W\METHOD\82W050620S.M  
 Quant Title : SW846 8260  
 QLast Update : Tue May 05 18:41:17 2020  
 Response via : Initial Calibration

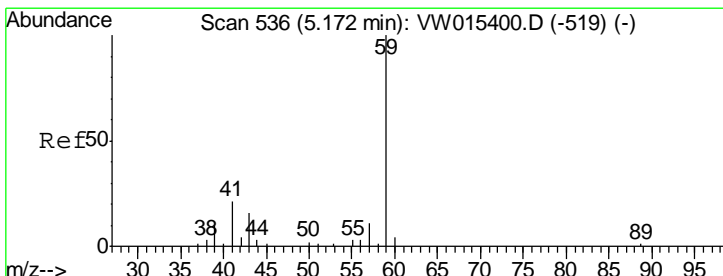
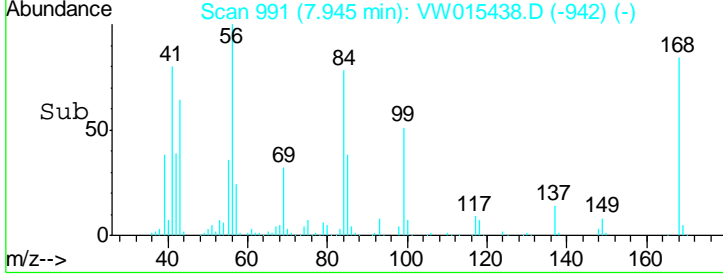
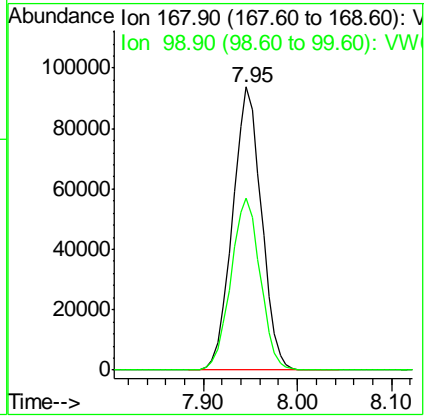
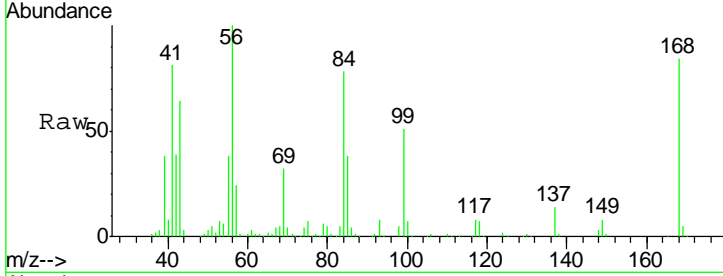




#1  
 Pentafluorobenzene  
 Concen: 50.000 ug/l  
 RT: 7.95 min Scan# 991  
 Delta R.T. 0.00 min  
 Lab File: VW015438.D  
 Acq: 15 May 2020 17:04

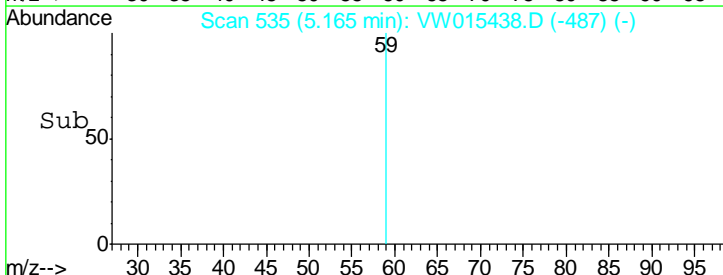
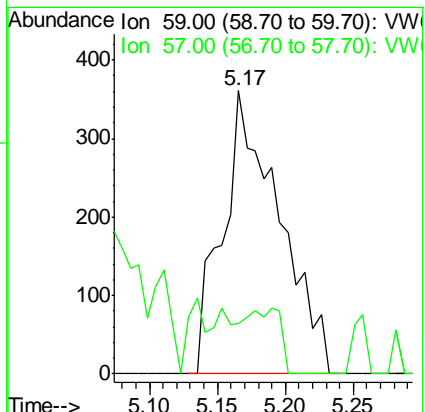
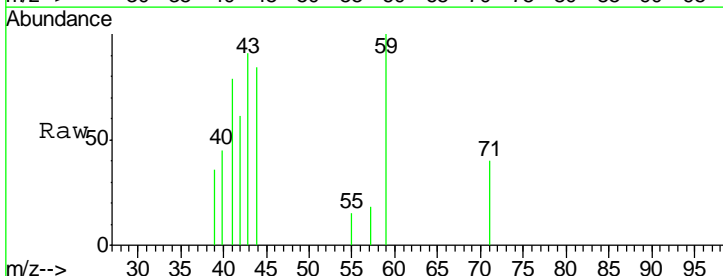
Instrument :  
 MSVOA\_W  
 ClientSampled :

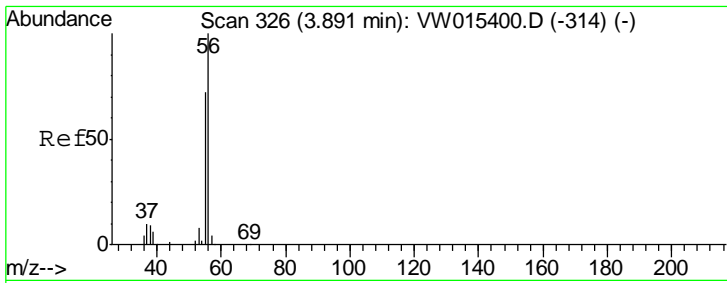
Tgt Ion	Resp	Lower	Upper
168	100		
99	60.6	50.3	75.5



#11  
 Tert butyl alcohol  
 Concen: 8.252 ug/l  
 RT: 5.17 min Scan# 535  
 Delta R.T. -0.01 min  
 Lab File: VW015438.D  
 Acq: 15 May 2020 17:04

Tgt Ion	Resp	Lower	Upper
59	100		
57	0.0	8.6	13.0#

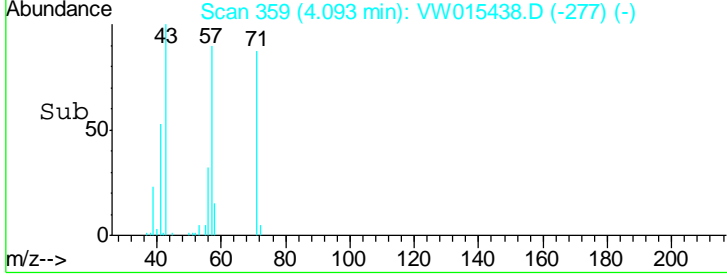
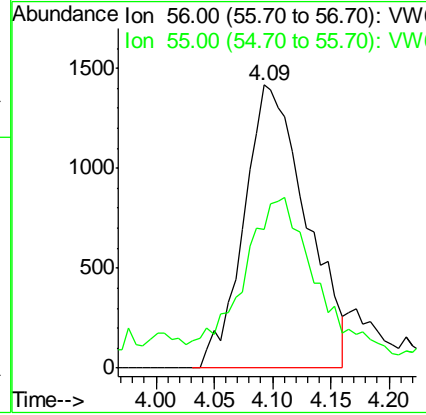
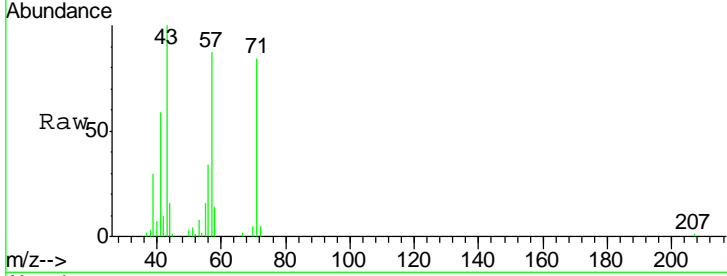




#13  
 Acrolein  
 Concen: 32.532 ug/l  
 RT: 4.09 min Scan# 359  
 Delta R.T. 0.20 min  
 Lab File: VW015438.D  
 Acq: 15 May 2020 17:04

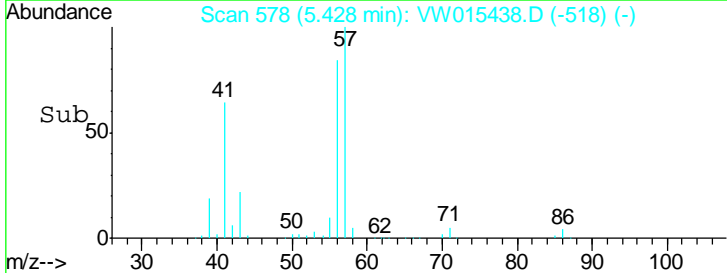
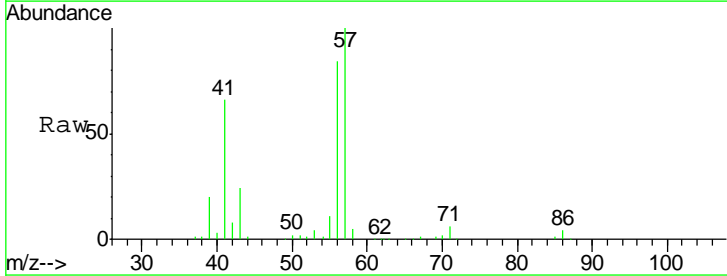
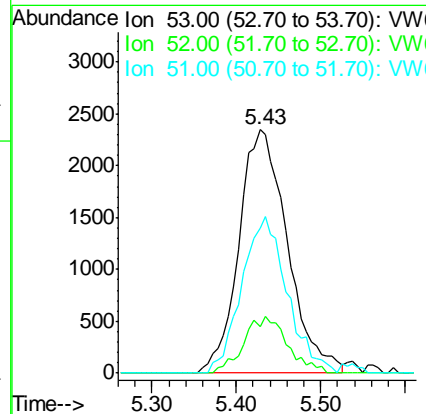
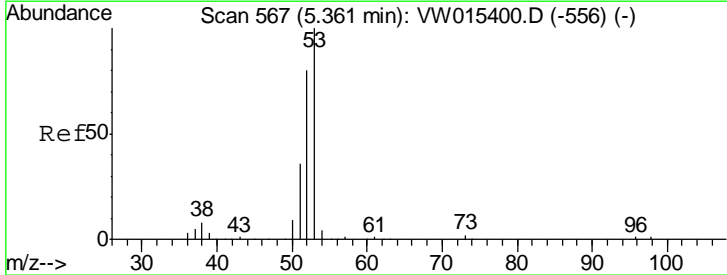
Instrument :  
 MSVOA\_W  
 ClientSampled :

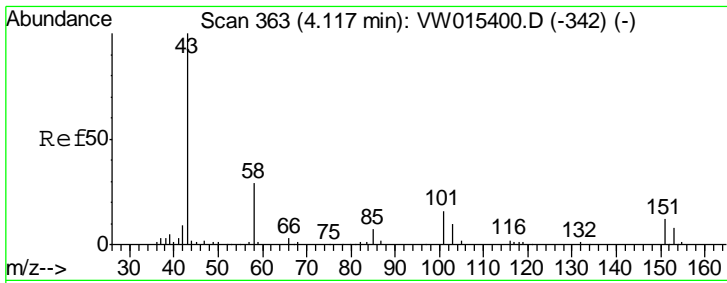
Tgt Ion	Resp	Lower	Upper
56	100		
55	51.4	56.4	84.6#



#15  
 Acrylonitrile  
 Concen: 22.489 ug/l  
 RT: 5.43 min Scan# 578  
 Delta R.T. 0.07 min  
 Lab File: VW015438.D  
 Acq: 15 May 2020 17:04

Tgt Ion	Resp	Lower	Upper
53	100		
52	20.8	66.6	99.8#
51	60.0	30.2	45.2#

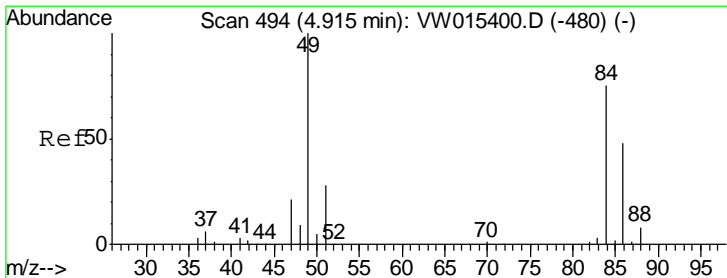
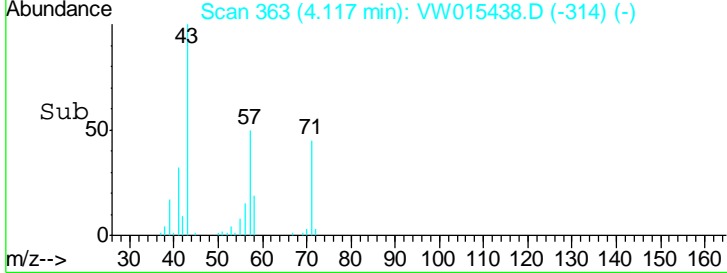
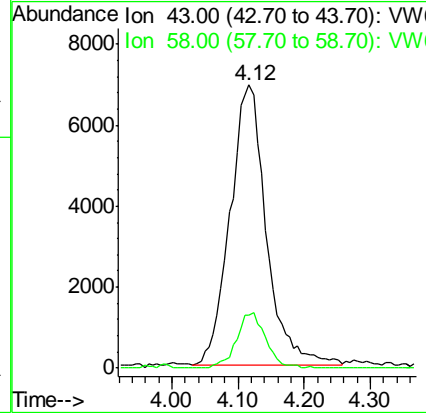
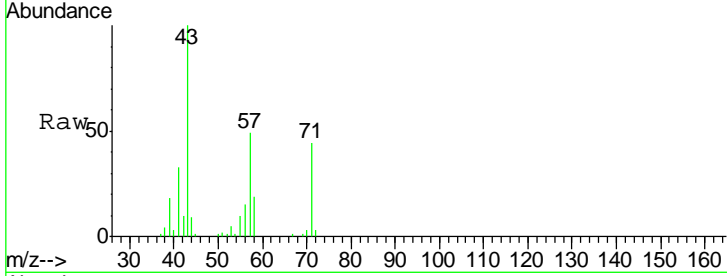




#16  
 Acetone  
 Concen: 76.267 ug/l  
 RT: 4.12 min Scan# 363  
 Delta R.T. 0.00 min  
 Lab File: VW015438.D  
 Acq: 15 May 2020 17:04

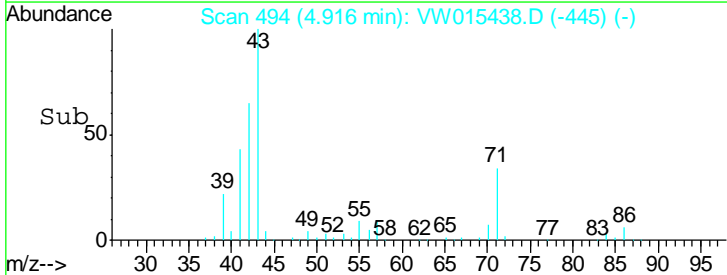
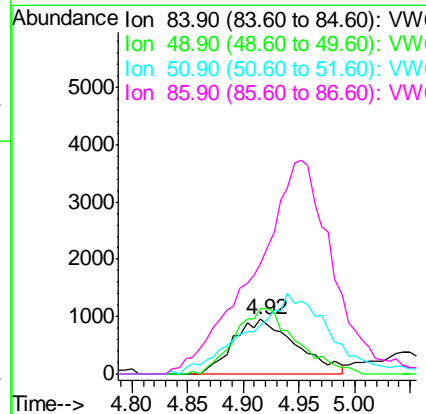
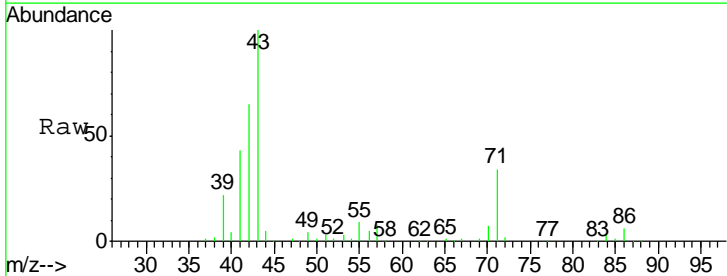
Instrument :  
 MSVOA\_W  
 ClientSampled :

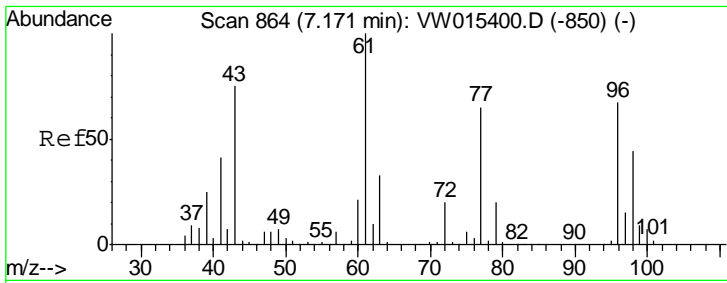
Tgt Ion	Resp	Lower	Upper
43	100		
58	19.0	23.4	35.0#



#20  
 Methylene Chloride  
 Concen: 1.683 ug/l  
 RT: 4.92 min Scan# 494  
 Delta R.T. 0.00 min  
 Lab File: VW015438.D  
 Acq: 15 May 2020 17:04

Tgt Ion	Resp	Lower	Upper
84	100		
49	113.7	106.4	159.6
51	70.7	30.2	45.2#
86	171.4	51.6	77.4#

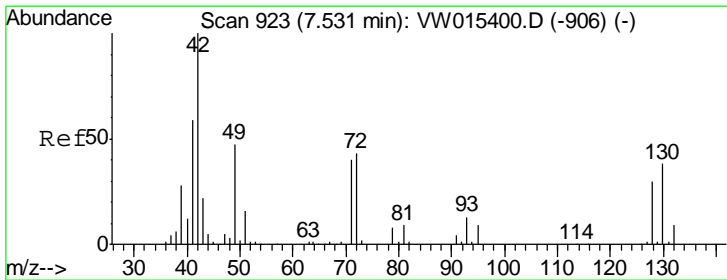
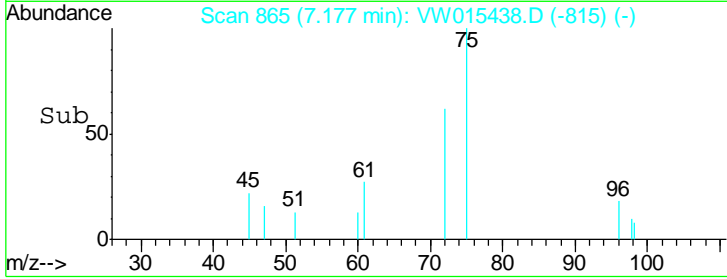
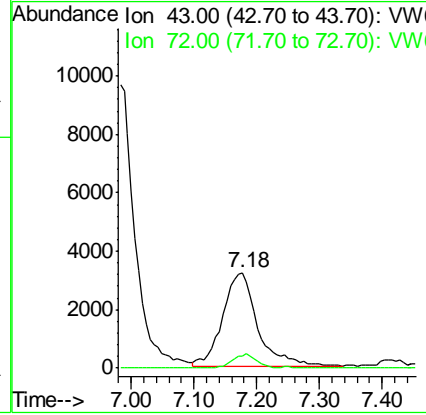
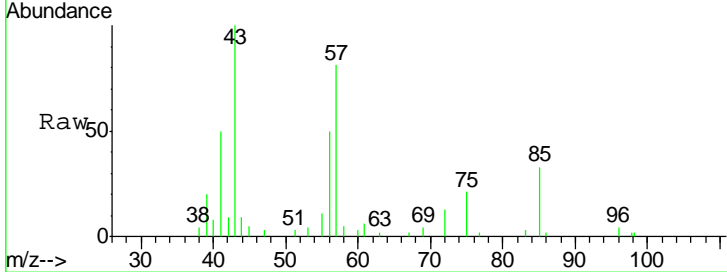




#25  
 2-Butanone  
 Concen: 23.127 ug/l  
 RT: 7.18 min Scan# 865  
 Delta R.T. 0.01 min  
 Lab File: VW015438.D  
 Acq: 15 May 2020 17:04

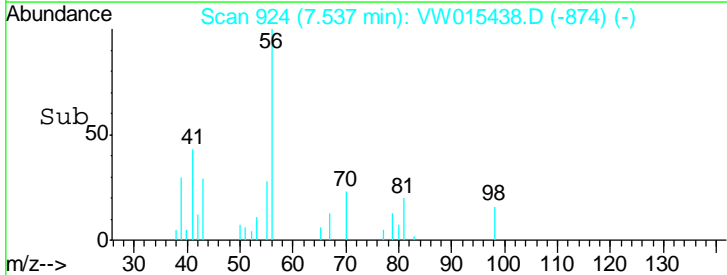
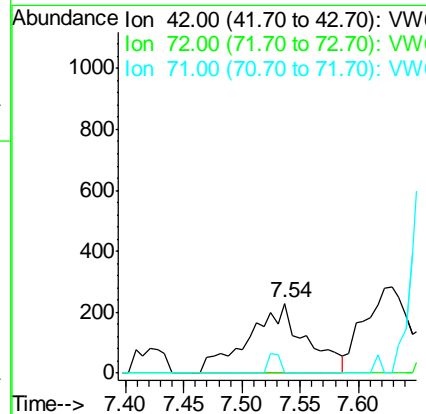
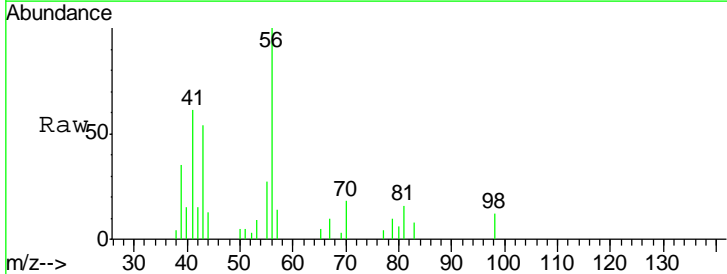
Instrument :  
 MSVOA\_W  
 ClientSampled :

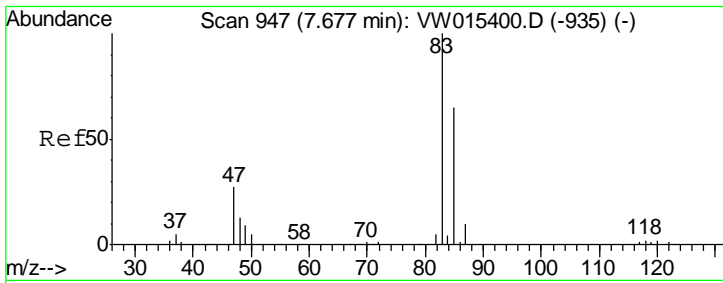
Tgt Ion	Resp	Lower	Upper
43	12333		
72	13.1	21.4	32.0#



#29  
 Tetrahydrofuran  
 Concen: 2.223 ug/l  
 RT: 7.54 min Scan# 924  
 Delta R.T. 0.01 min  
 Lab File: VW015438.D  
 Acq: 15 May 2020 17:04

Tgt Ion	Resp	Lower	Upper
42	780		
72	0.0	33.6	50.4#
71	0.0	32.1	48.1#

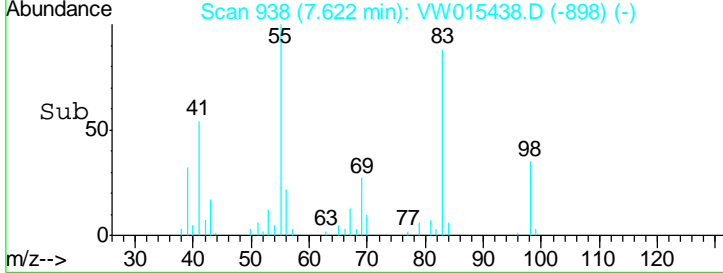
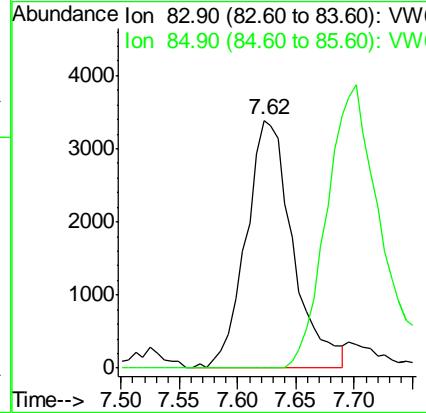
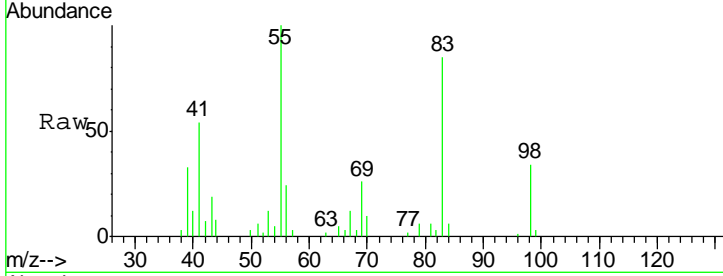




#30  
 Chloroform  
 Concen: 2.402 ug/l  
 RT: 7.62 min Scan# 938  
 Delta R.T. -0.05 min  
 Lab File: VW015438.D  
 Acq: 15 May 2020 17:04

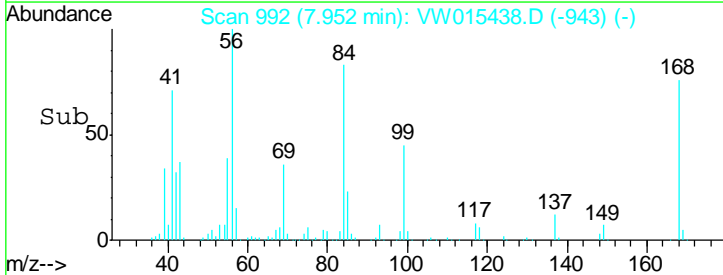
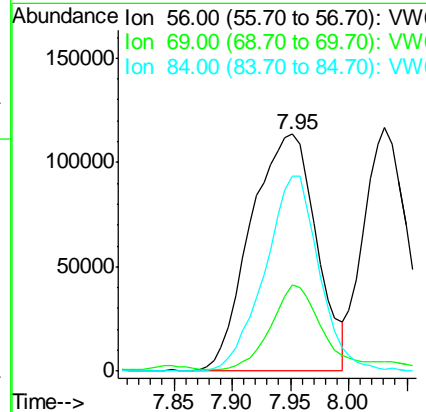
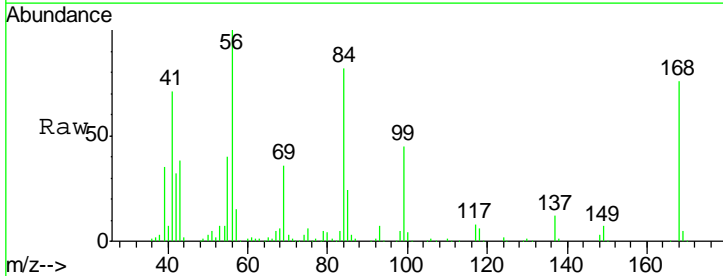
**Instrument :**  
 MSVOA\_W  
**ClientSampled :**

Tgt Ion	Resp	Lower	Upper
83	100		
85	0.0	51.8	77.6#

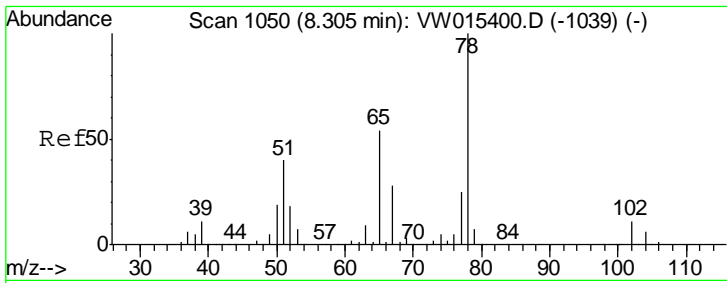


#31  
 Cyclohexane  
 Concen: 109.177 ug/l  
 RT: 7.95 min Scan# 992  
 Delta R.T. 0.00 min  
 Lab File: VW015438.D  
 Acq: 15 May 2020 17:04

Tgt Ion	Resp	Lower	Upper
56	100		
69	35.0	27.2	40.8
84	82.6	67.7	101.5



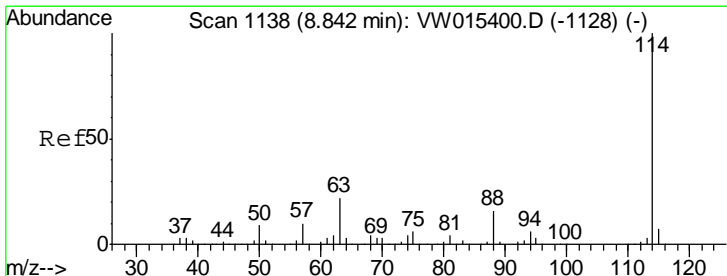
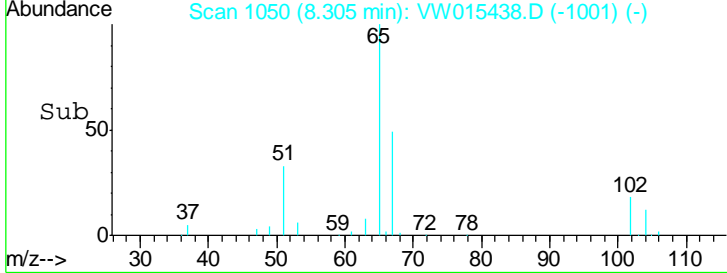
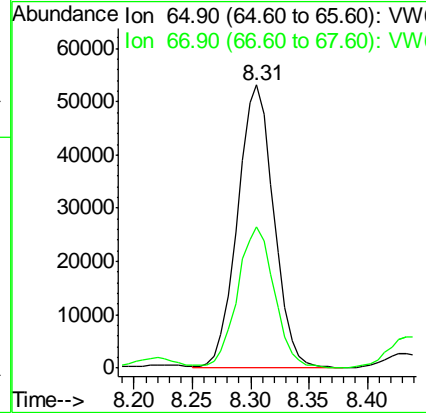
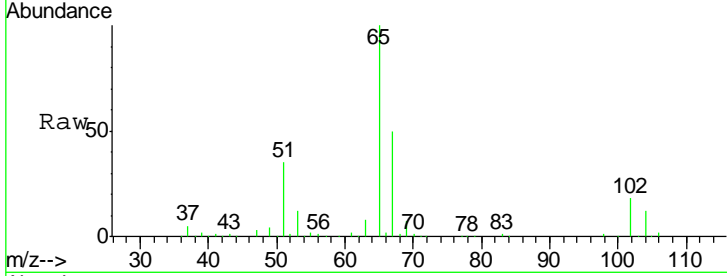




#33  
 1,2-Dichloroethane-d4  
 Concen: 51.933 ug/l  
 RT: 8.31 min Scan# 1050  
 Delta R.T. 0.00 min  
 Lab File: VW015438.D  
 Acq: 15 May 2020 17:04

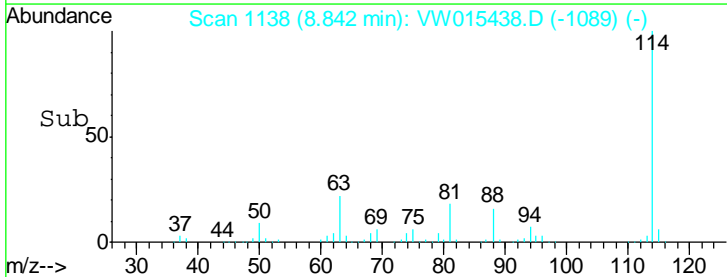
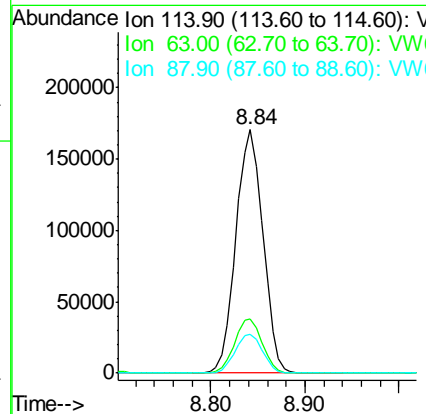
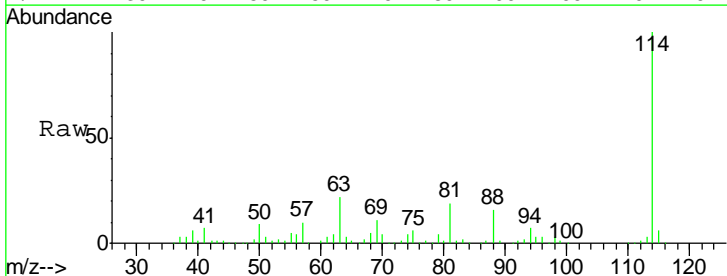
Instrument :  
 MSVOA\_W  
 ClientSampled :

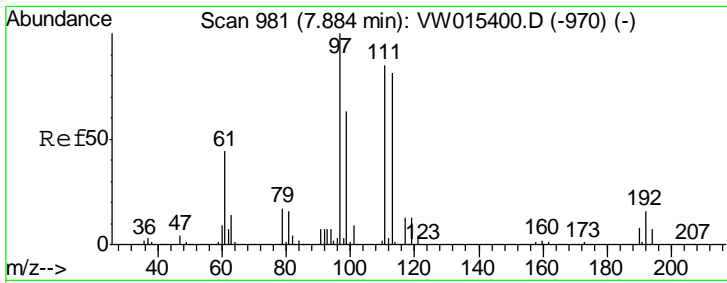
Tgt Ion	Resp	Lower	Upper
65	114373		
65	100		
67	50.7	0.0	102.8



#34  
 1,4-Difluorobenzene  
 Concen: 50.000 ug/l  
 RT: 8.84 min Scan# 1138  
 Delta R.T. 0.00 min  
 Lab File: VW015438.D  
 Acq: 15 May 2020 17:04

Tgt Ion	Resp	Lower	Upper
114	341188		
114	100		
63	22.3	0.0	43.4
88	16.0	0.0	31.8

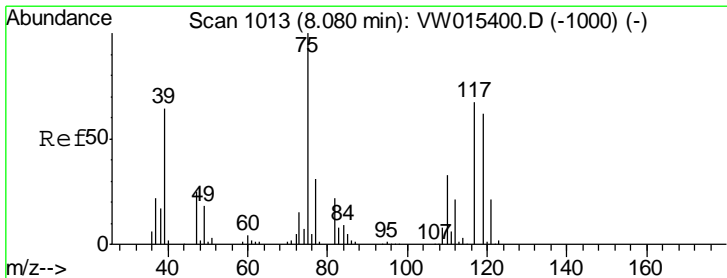
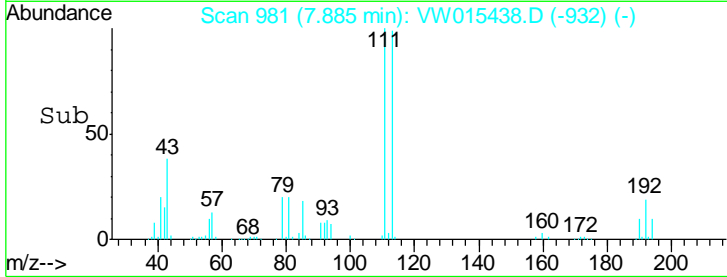
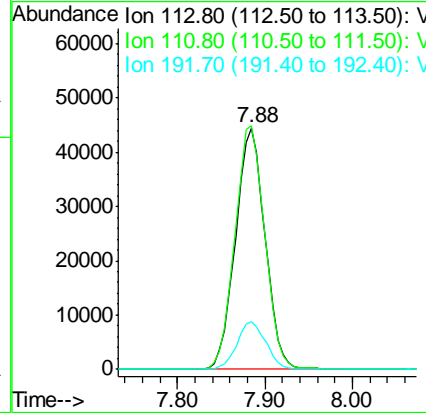
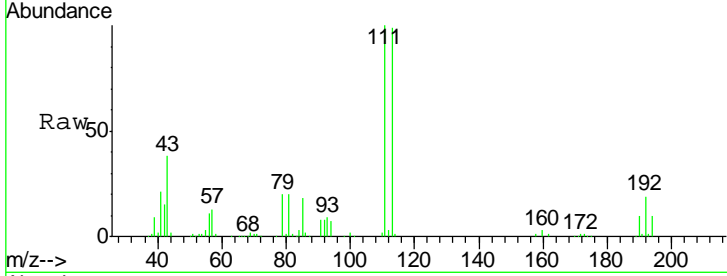




#35  
 Dibromofluoromethane  
 Concen: 53.240 ug/l  
 RT: 7.88 min Scan# 981  
 Delta R.T. 0.00 min  
 Lab File: VW015438.D  
 Acq: 15 May 2020 17:04

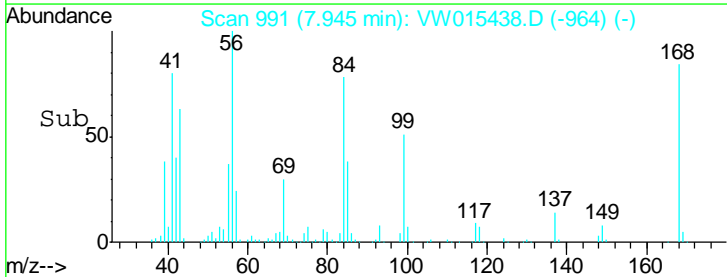
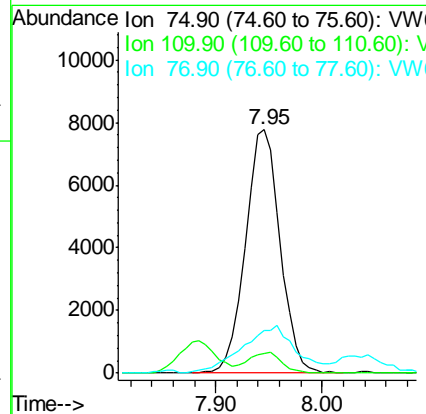
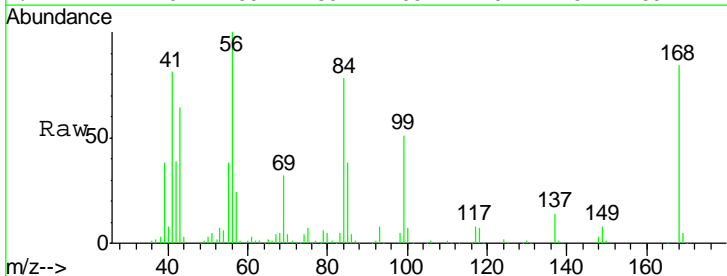
Instrument :  
 MSVOA\_W  
 ClientSampled :

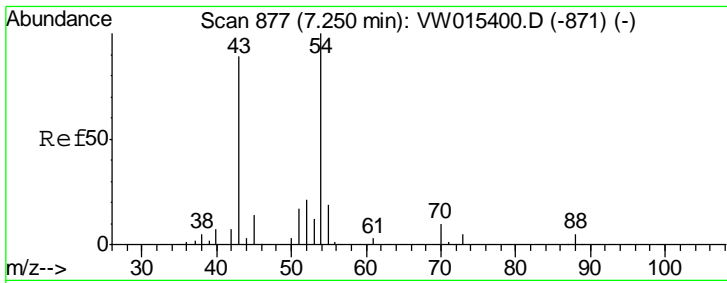
Tgt Ion	Resp	Lower	Upper
113	104258		
111	102.2	82.9	124.3
192	19.3	15.4	23.0



#36  
 1,1-Dichloropropene  
 Concen: 5.278 ug/l  
 RT: 7.95 min Scan# 991  
 Delta R.T. -0.13 min  
 Lab File: VW015438.D  
 Acq: 15 May 2020 17:04

Tgt Ion	Resp	Lower	Upper
75	17692		
110	8.4	16.6	49.8#
77	29.8	24.5	36.7

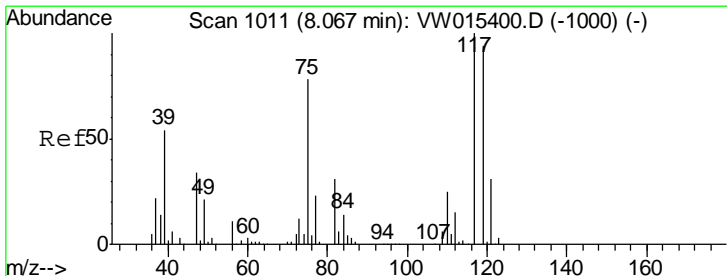
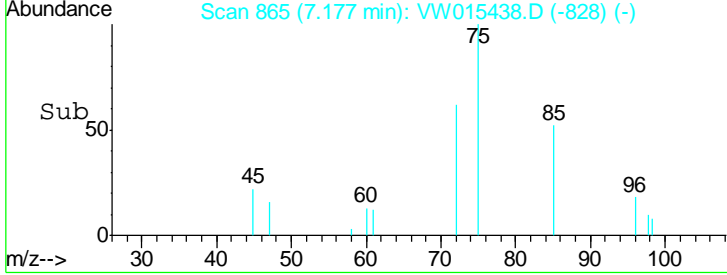
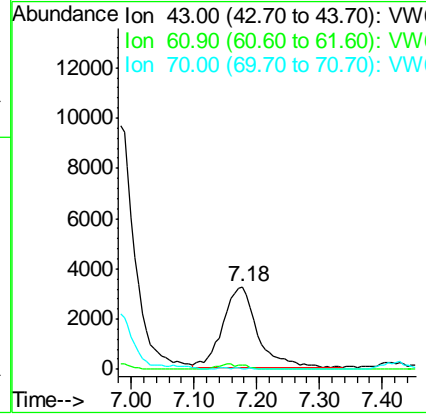
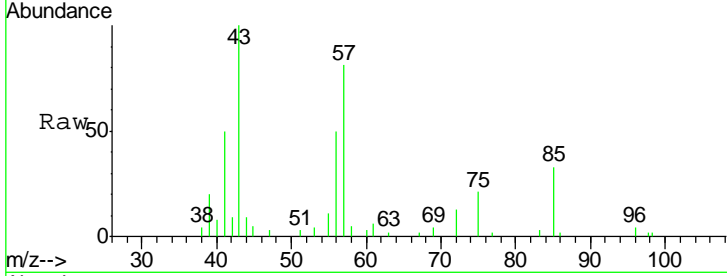




#37  
 Ethyl Acetate  
 Concen: 9.482 ug/l  
 RT: 7.18 min Scan# 865  
 Delta R.T. -0.07 min  
 Lab File: VW015438.D  
 Acq: 15 May 2020 17:04

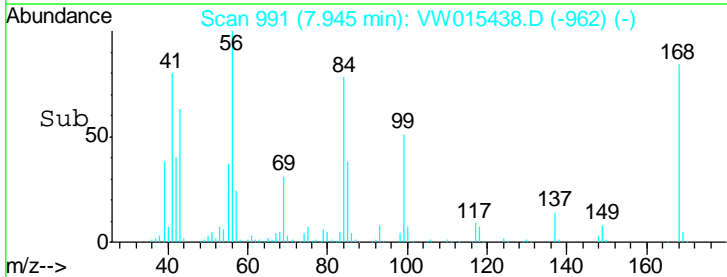
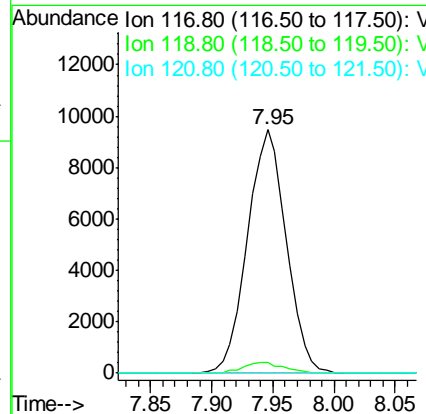
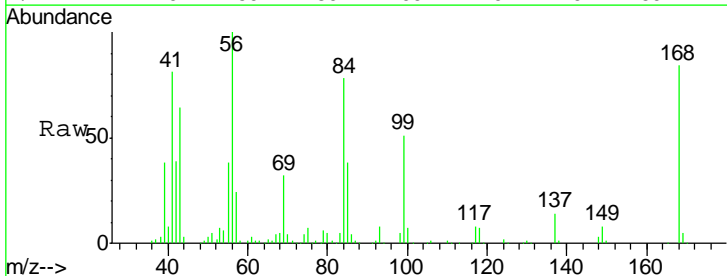
Instrument :  
 MSVOA\_W  
 ClientSampled :

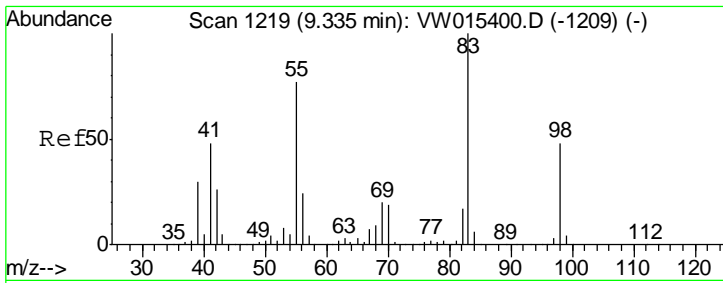
Tgt Ion	Resp	Lower	Upper
43	12333		
61	0.0	10.2	15.2#
70	0.0	8.0	12.0#



#38  
 Carbon Tetrachloride  
 Concen: 6.656 ug/l  
 RT: 7.95 min Scan# 991  
 Delta R.T. -0.12 min  
 Lab File: VW015438.D  
 Acq: 15 May 2020 17:04

Tgt Ion	Resp	Lower	Upper
117	20860		
119	4.6	75.4	113.0#
121	0.0	24.8	37.2#



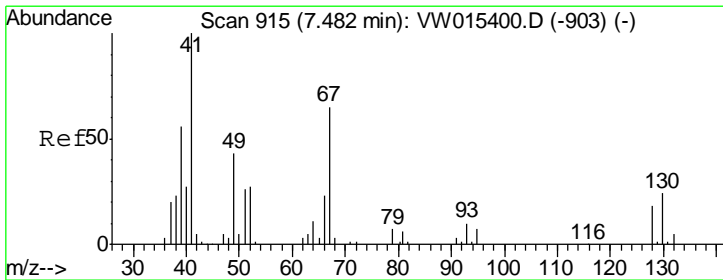
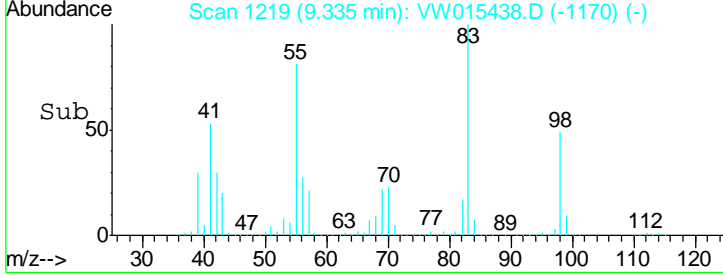
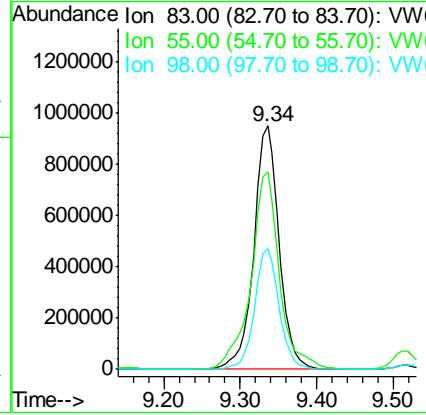
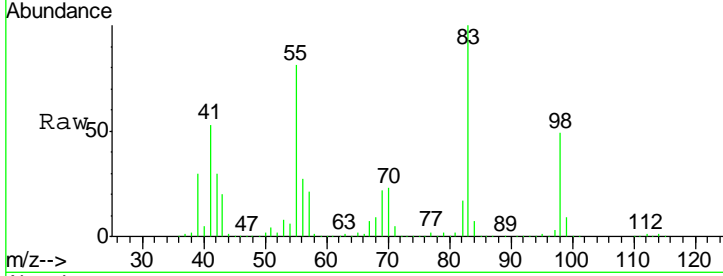


#39  
 Methylcyclohexane  
 Concen: 516.797 ug/l  
 RT: 9.34 min Scan# 1219  
 Delta R.T. 0.00 min  
 Lab File: VW015438.D  
 Acq: 15 May 2020 17:04

Instrument :  
 MSVOA\_W  
 ClientSampled :

Tgt Ion: 83 Resp: 2192887

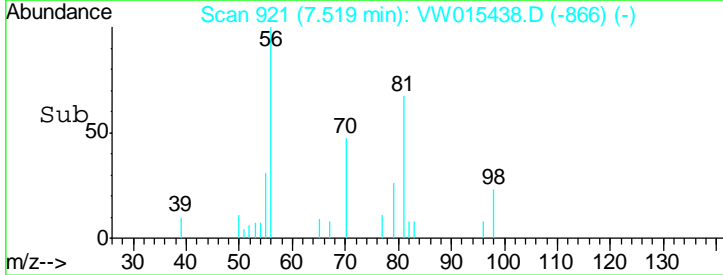
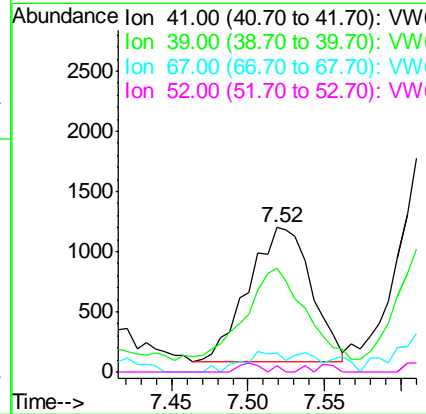
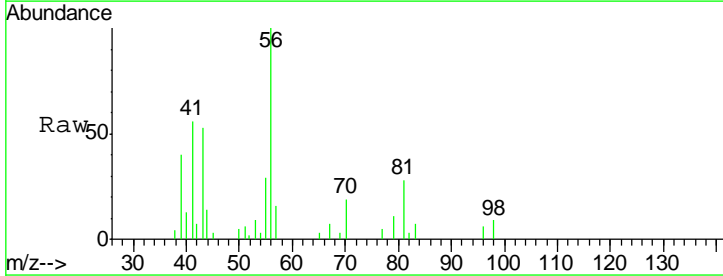
Ion	Ratio	Lower	Upper
83	100		
55	81.4	61.9	92.9
98	49.4	38.2	57.2

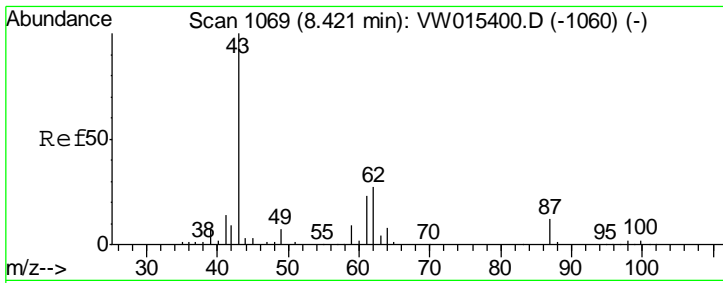


#41  
 Methacrylonitrile  
 Concen: 3.883 ug/l  
 RT: 7.52 min Scan# 921  
 Delta R.T. 0.04 min  
 Lab File: VW015438.D  
 Acq: 15 May 2020 17:04

Tgt Ion: 41 Resp: 3191

Ion	Ratio	Lower	Upper
41	100		
39	62.5	46.2	69.4
67	9.7	56.2	84.2#
52	2.7	25.0	37.6#

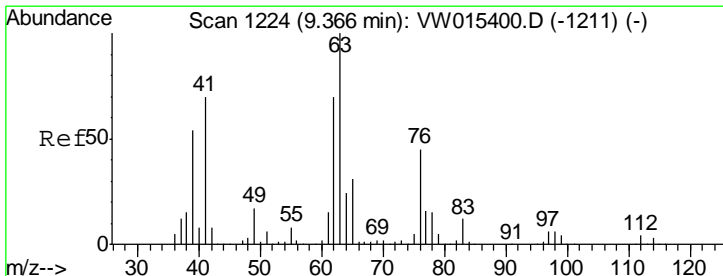
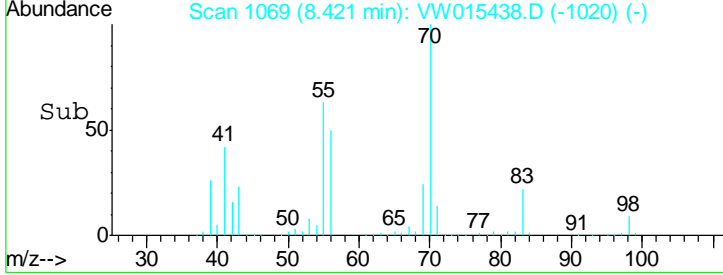
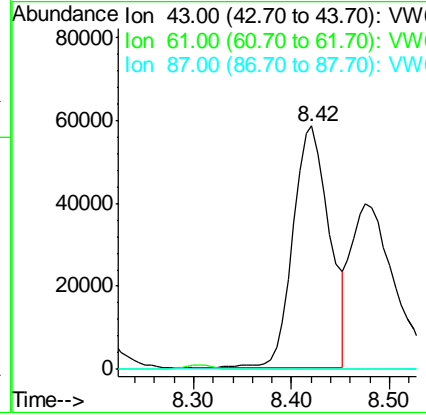
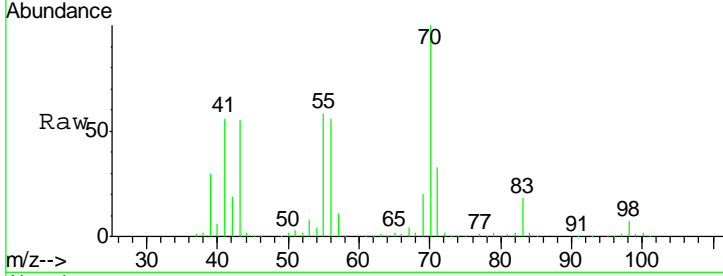




#43  
 Isopropyl Acetate  
 Concen: 55.626 ug/l  
 RT: 8.42 min Scan# 1069  
 Delta R.T. 0.00 min  
 Lab File: VW015438.D  
 Acq: 15 May 2020 17:04

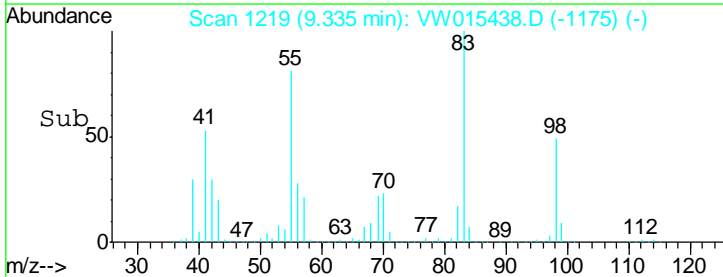
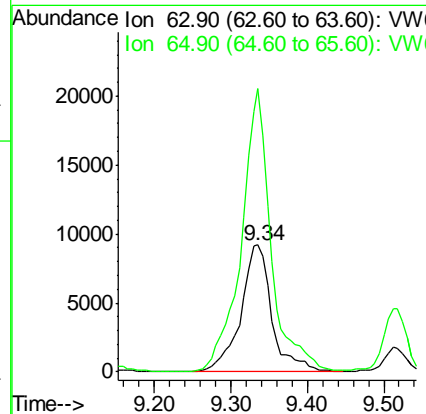
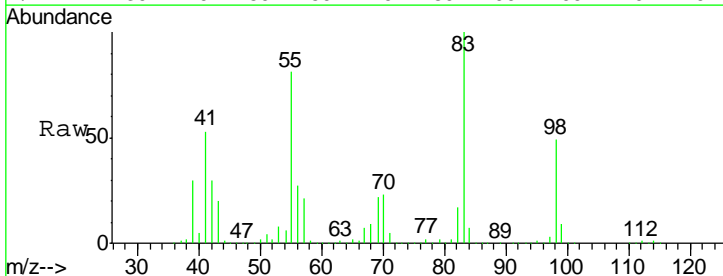
Instrument :  
 MSVOA\_W  
 ClientSampled :

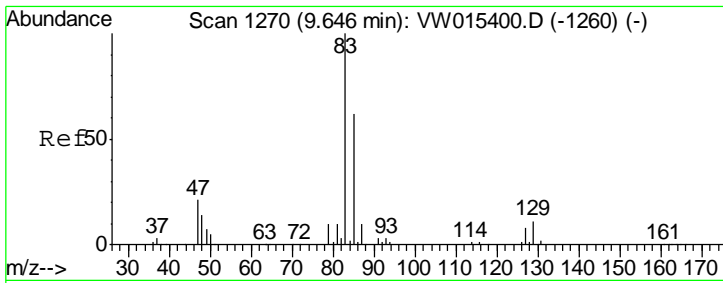
Tgt Ion	Resp	Lower	Upper
43	152164		
61	0.3	24.3	36.5#
87	0.0	10.1	15.1#



#45  
 1,2-Dichloropropane  
 Concen: 11.485 ug/l  
 RT: 9.34 min Scan# 1219  
 Delta R.T. -0.03 min  
 Lab File: VW015438.D  
 Acq: 15 May 2020 17:04

Tgt Ion	Resp	Lower	Upper
63	25939		
65	223.4	25.0	37.6#

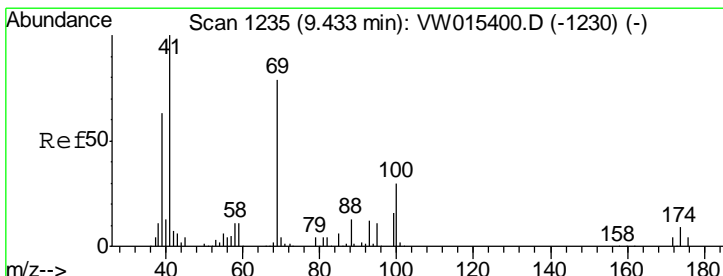
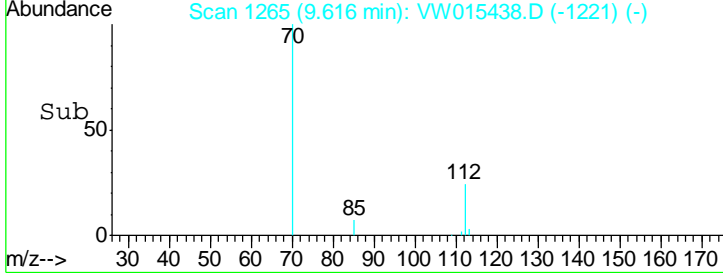
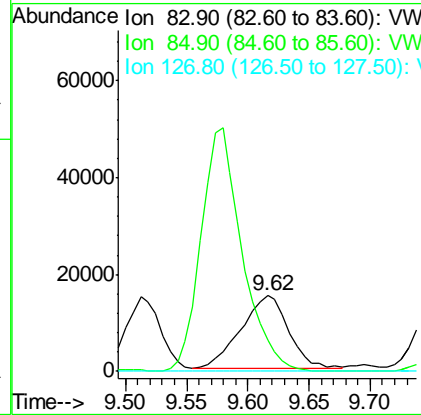
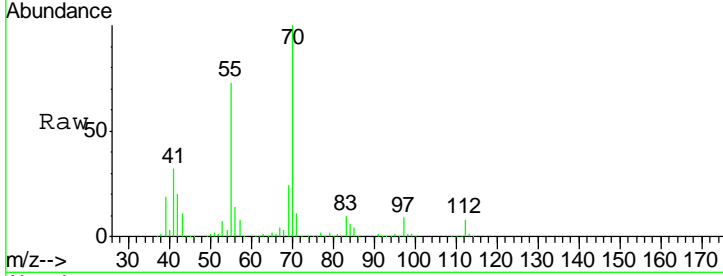




#47  
 Bromodichloromethane  
 Concen: 13.517 ug/l  
 RT: 9.62 min Scan# 1265  
 Delta R.T. -0.03 min  
 Lab File: VW015438.D  
 Acq: 15 May 2020 17:04

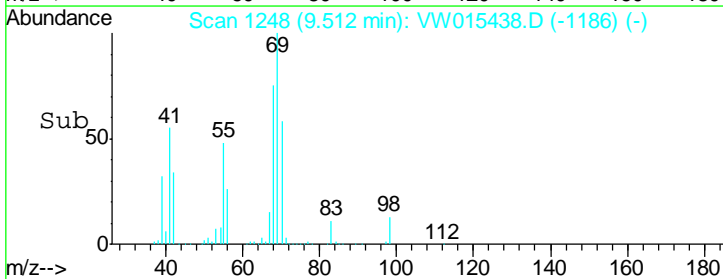
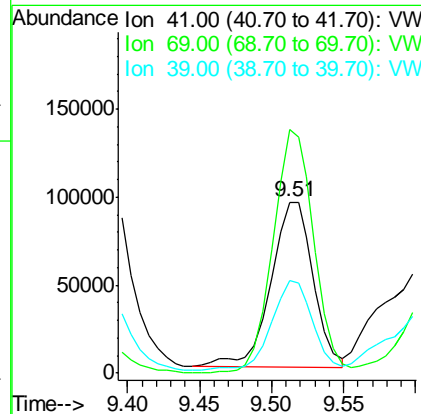
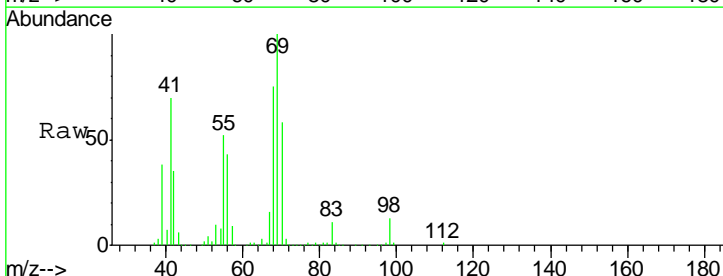
Instrument :  
 MSVOA\_W  
 ClientSampled :

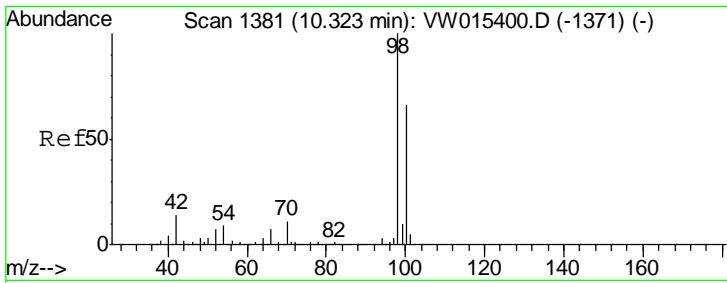
Tgt Ion	Resp	Lower	Upper
83	41379		
85	41.6	49.4	74.0#
127	0.0	6.4	9.6#



#48  
 Methyl methacrylate  
 Concen: 151.479 ug/l  
 RT: 9.51 min Scan# 1248  
 Delta R.T. 0.08 min  
 Lab File: VW015438.D  
 Acq: 15 May 2020 17:04

Tgt Ion	Resp	Lower	Upper
41	191402		
69	141.0	66.2	99.4#
39	53.0	51.1	76.7

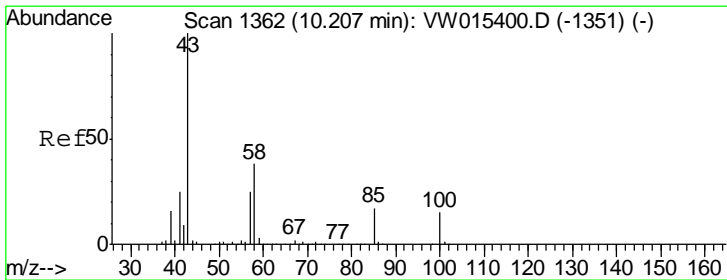
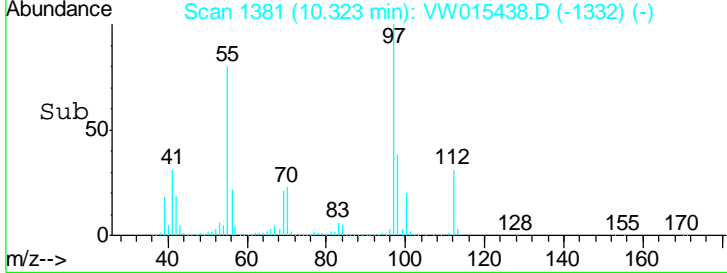
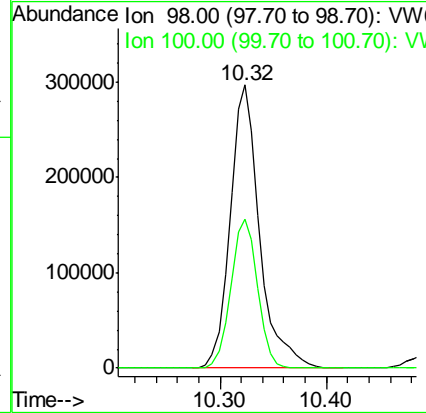
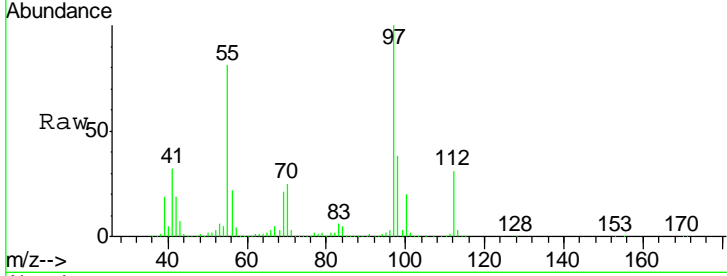




#50  
 Toluene-d8  
 Concen: 70.398 ug/l  
 RT: 10.32 min Scan# 1381  
 Delta R.T. 0.00 min  
 Lab File: VW015438.D  
 Acq: 15 May 2020 17:04

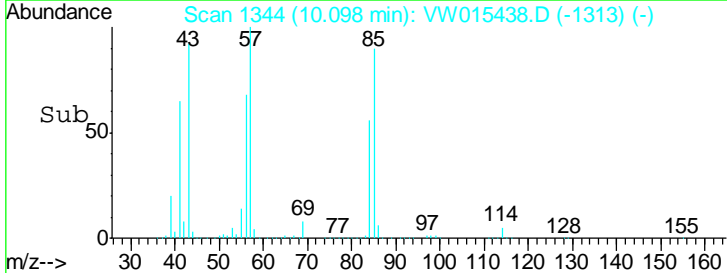
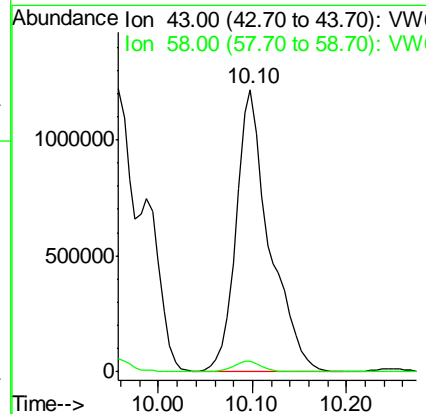
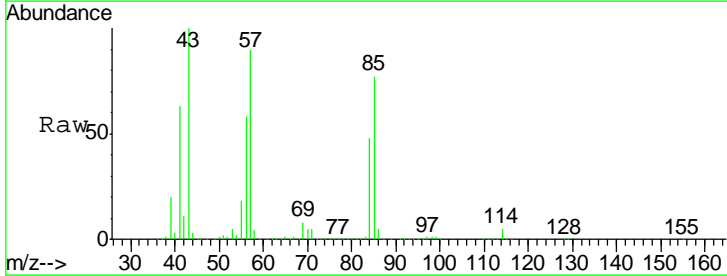
Instrument :  
 MSVOA\_W  
 ClientSampled :

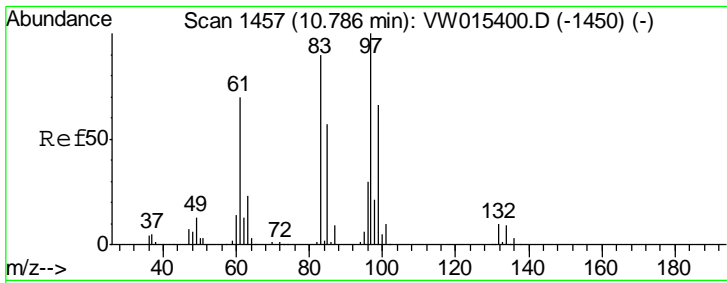
Tgt Ion	Resp	Lower	Upper
98	100		
100	47.9	52.7	79.1#



#51  
 4-Methyl-2-Pentanone  
 Concen: 2323.554 ug/l  
 RT: 10.10 min Scan# 1344  
 Delta R.T. -0.11 min  
 Lab File: VW015438.D  
 Acq: 15 May 2020 17:04

Tgt Ion	Resp	Lower	Upper
43	100		
58	3.4	30.8	46.2#

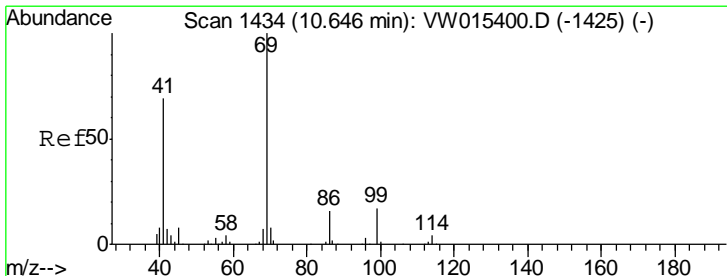
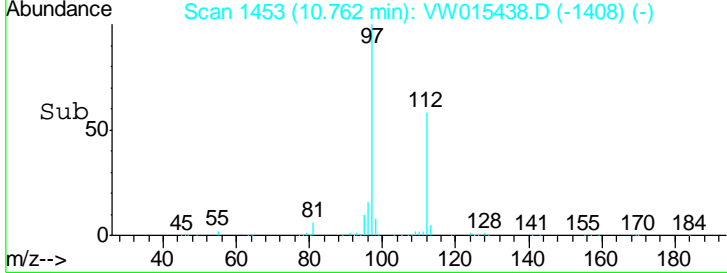
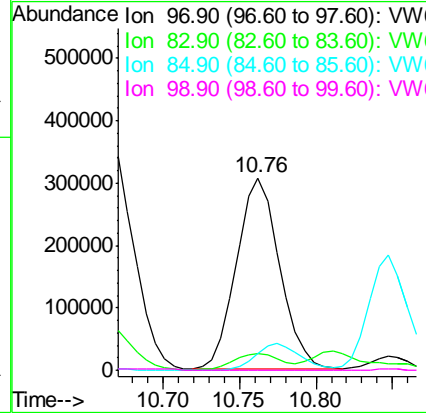
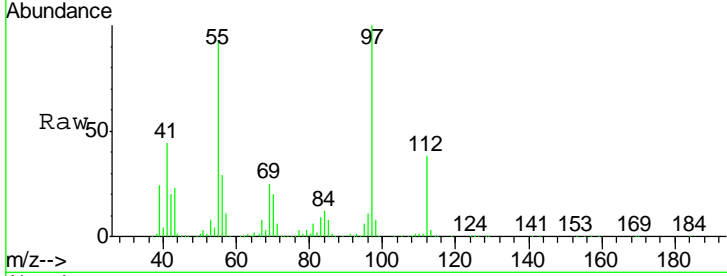




#55  
 1,1,2-Trichloroethane  
 Concen: 379.478 ug/l  
 RT: 10.76 min Scan# 1453  
 Delta R.T. -0.02 min  
 Lab File: VW015438.D  
 Acq: 15 May 2020 17:04

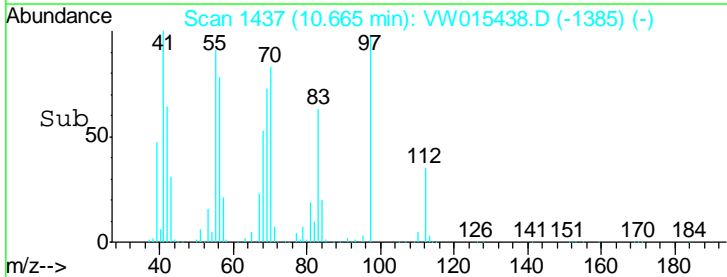
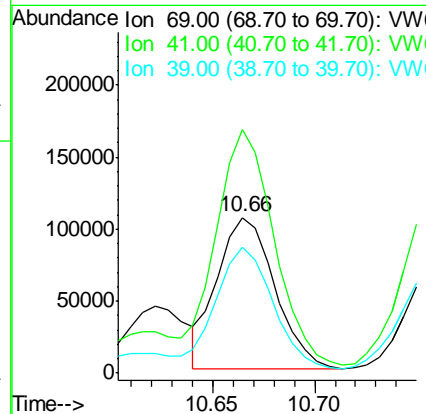
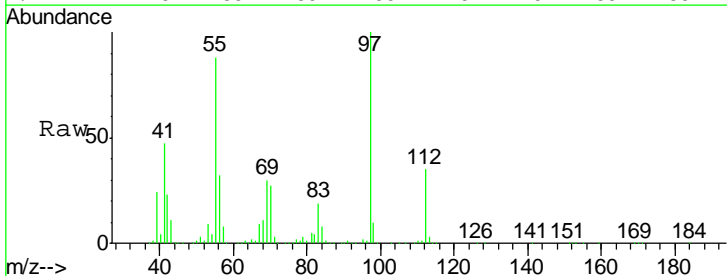
Instrument :  
 MSVOA\_W  
 ClientSampled :

Tgt Ion	Resp	Lower	Upper
97	100		
83	8.4	72.2	108.4#
85	8.4	45.2	67.8#
99	0.3	52.6	78.8#

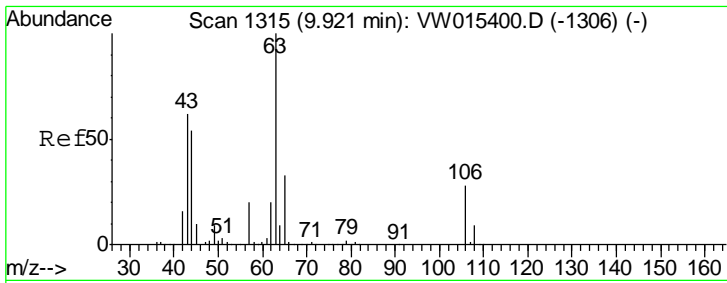


#56  
 Ethyl methacrylate  
 Concen: 94.339 ug/l  
 RT: 10.66 min Scan# 1437  
 Delta R.T. 0.02 min  
 Lab File: VW015438.D  
 Acq: 15 May 2020 17:04

Tgt Ion	Resp	Lower	Upper
69	100		
41	155.6	55.3	82.9#
39	78.8	31.9	47.9#



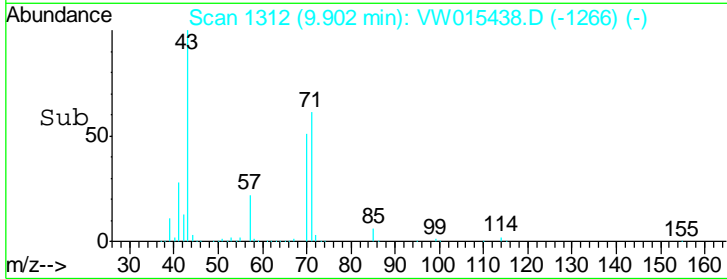
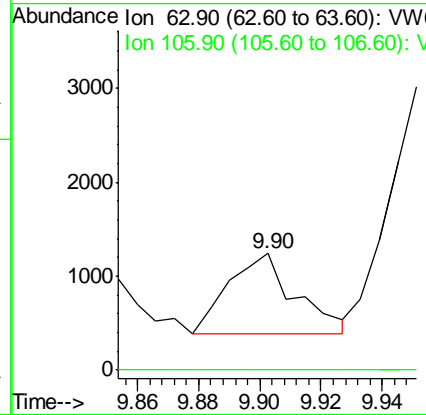
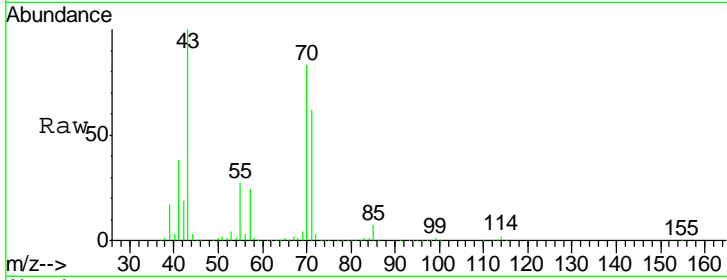




#58  
 2-Chloroethyl Vinyl ether  
 Concen: 1.210 ug/l  
 RT: 9.90 min Scan# 1312  
 Delta R.T. -0.02 min  
 Lab File: VW015438.D  
 Acq: 15 May 2020 17:04

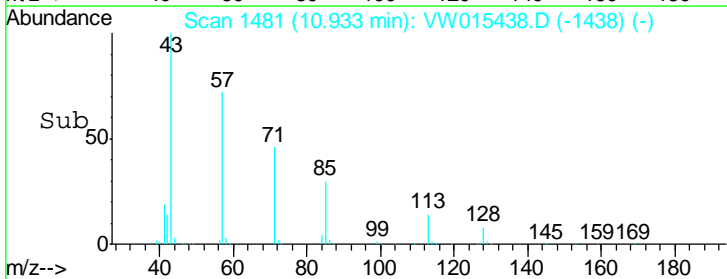
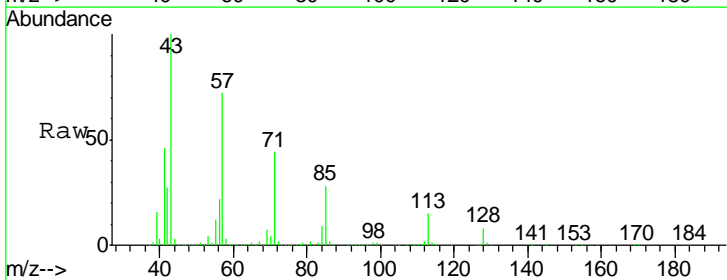
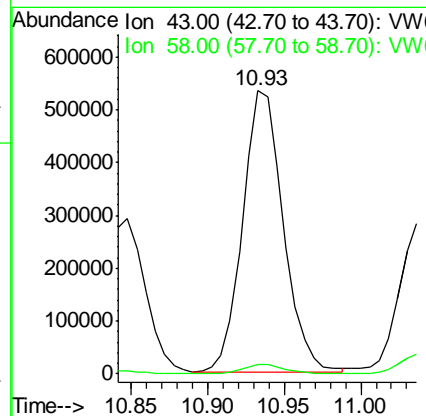
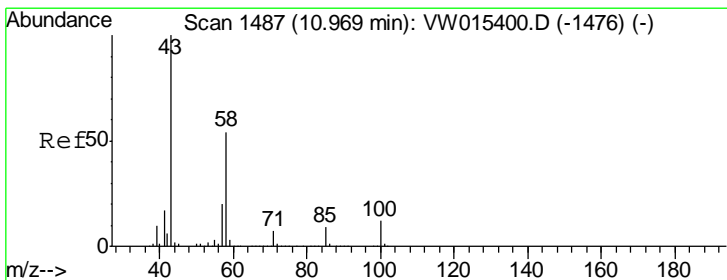
Instrument :  
 MSVOA\_W  
 ClientSampled :

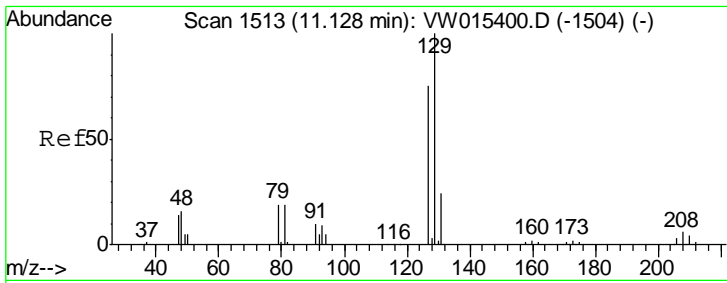
Tgt Ion: 63 Resp: 1285  
 Ion Ratio Lower Upper  
 63 100  
 106 0.0 22.6 33.8#



#59  
 2-Hexanone  
 Concen: 1127.847 ug/l  
 RT: 10.93 min Scan# 1481  
 Delta R.T. -0.04 min  
 Lab File: VW015438.D  
 Acq: 15 May 2020 17:04

Tgt Ion: 43 Resp: 978317  
 Ion Ratio Lower Upper  
 43 100  
 58 3.5 26.7 80.0#

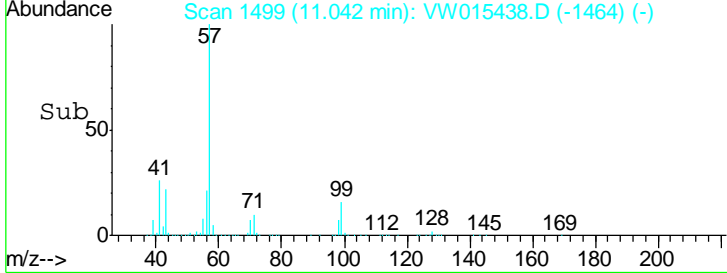
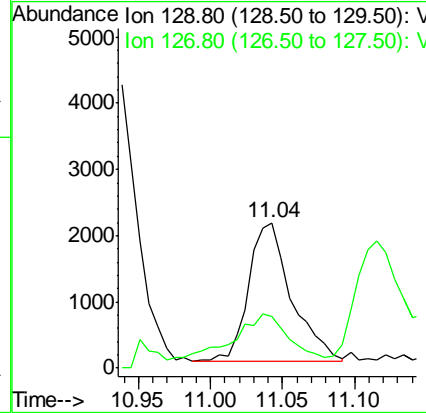
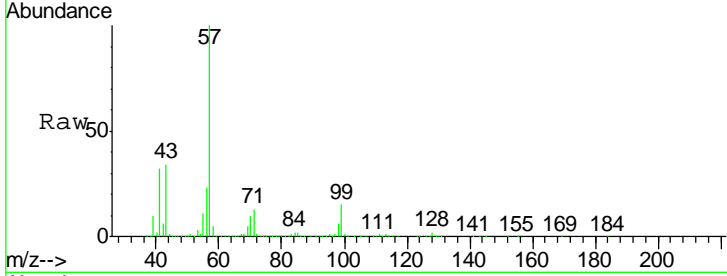




#60  
 Dibromochloromethane  
 Concen: 2.279 ug/l  
 RT: 11.04 min Scan# 1499  
 Delta R.T. -0.09 min  
 Lab File: VW015438.D  
 Acq: 15 May 2020 17:04

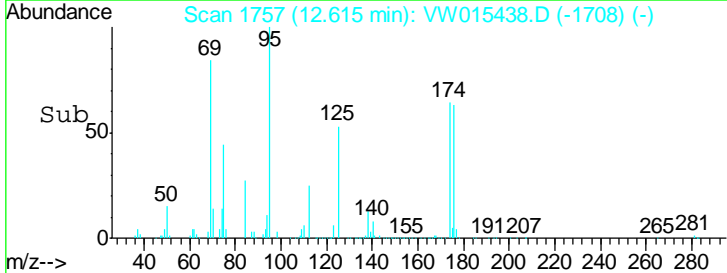
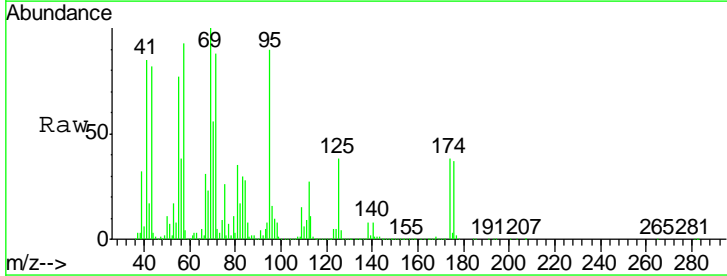
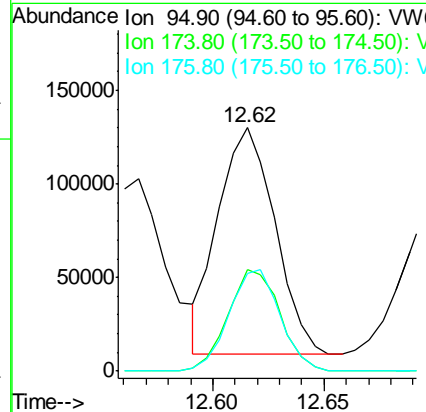
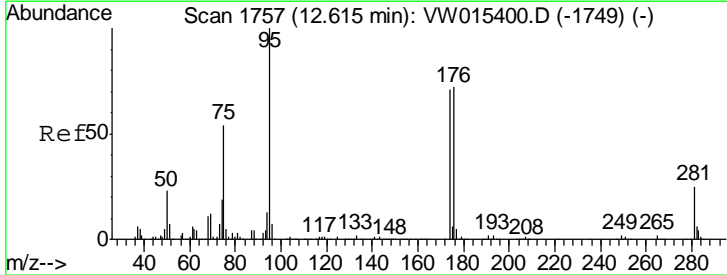
Instrument :  
 MSVOA\_W  
 ClientSampled :

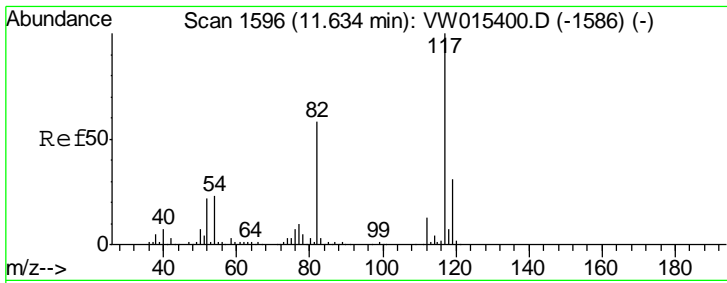
Tgt Ion: 129 Resp: 4354  
 Ion Ratio Lower Upper  
 129 100  
 127 57.3 39.1 117.2



#62  
 4-Bromofluorobenzene  
 Concen: 71.919 ug/l  
 RT: 12.62 min Scan# 1757  
 Delta R.T. 0.00 min  
 Lab File: VW015438.D  
 Acq: 15 May 2020 17:04

Tgt Ion: 95 Resp: 215217  
 Ion Ratio Lower Upper  
 95 100  
 174 41.1 0.0 147.6  
 176 40.6 0.0 144.4

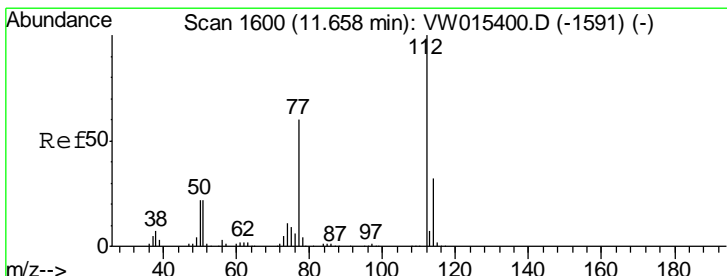
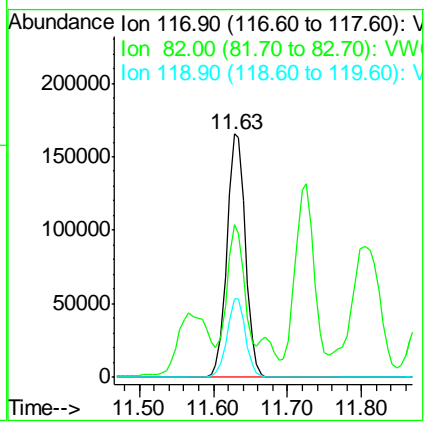
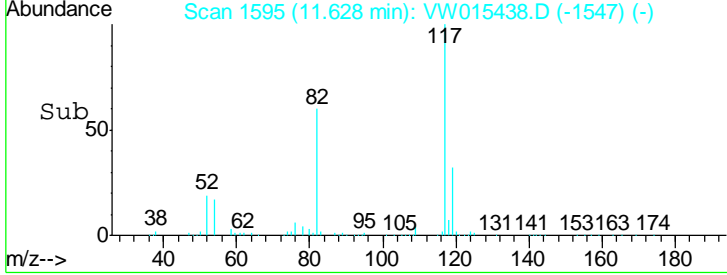
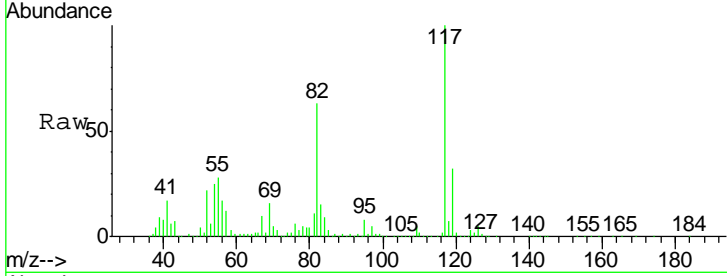




#63  
 Chlorobenzene-d5  
 Concen: 50.000 ug/l  
 RT: 11.63 min Scan# 1595  
 Delta R.T. -0.01 min  
 Lab File: VW015438.D  
 Acq: 15 May 2020 17:04

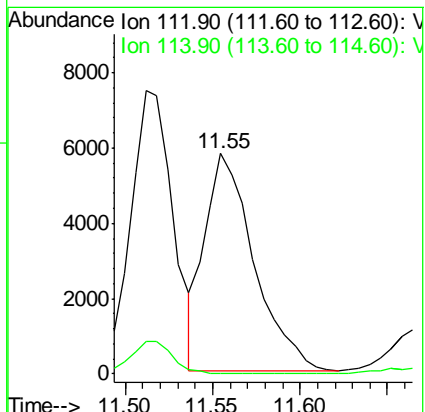
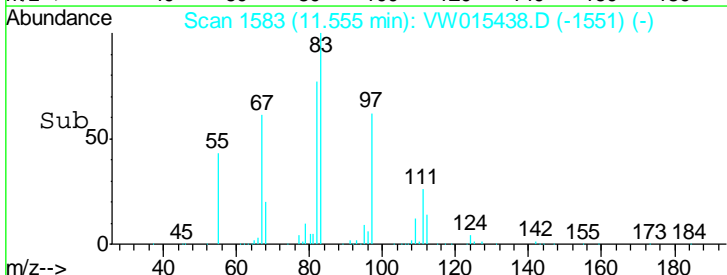
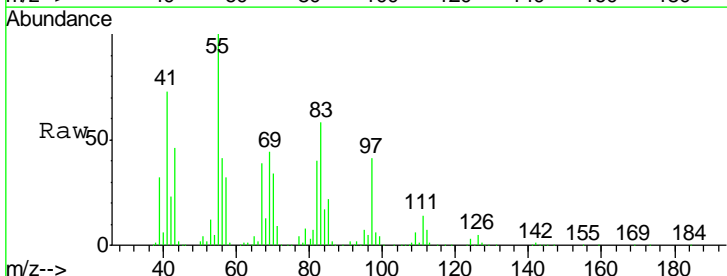
Instrument :  
 MSVOA\_W  
 ClientSampled :

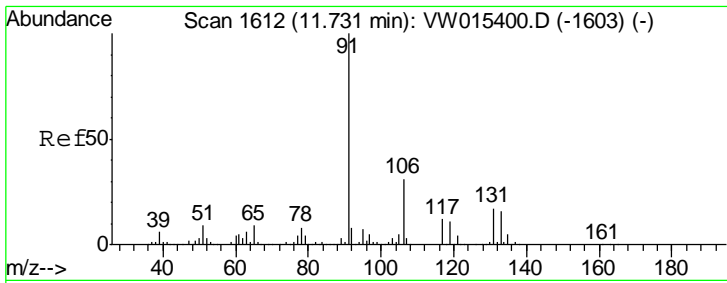
Tgt Ion	Resp	Lower	Upper
117	285927		
82	51.0	46.4	69.6
119	32.1	24.6	37.0



#65  
 Chlorobenzene  
 Concen: 2.018 ug/l  
 RT: 11.55 min Scan# 1583  
 Delta R.T. -0.10 min  
 Lab File: VW015438.D  
 Acq: 15 May 2020 17:04

Tgt Ion	Resp	Lower	Upper
112	11374		
114	0.0	25.6	38.4#

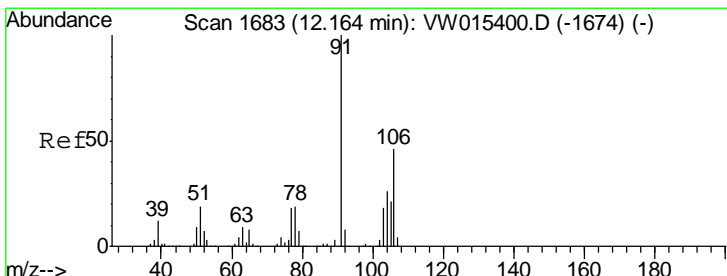
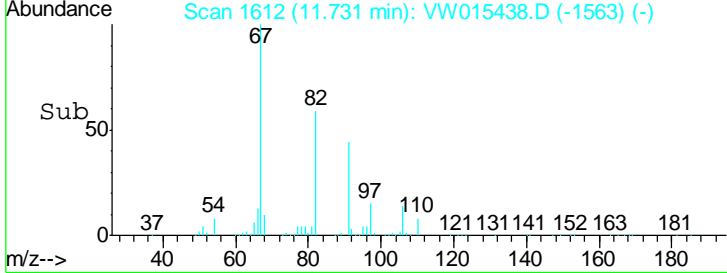
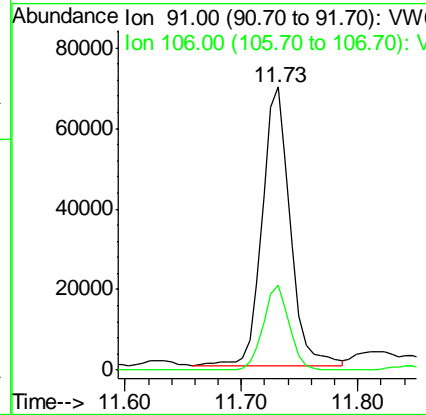
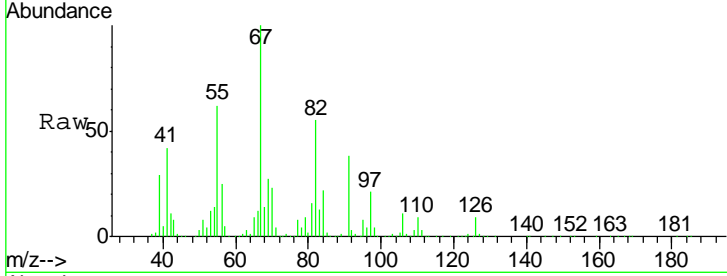




#67  
 Ethyl Benzene  
 Concen: 10.676 ug/l  
 RT: 11.73 min Scan# 1612  
 Delta R.T. 0.00 min  
 Lab File: VW015438.D  
 Acq: 15 May 2020 17:04

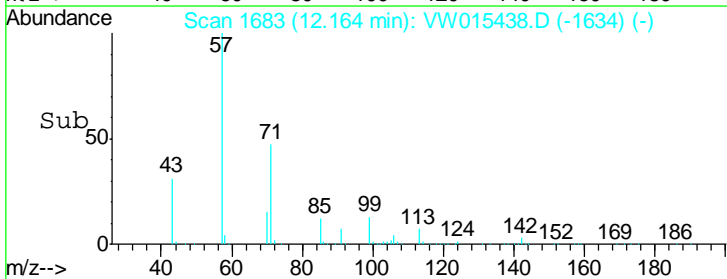
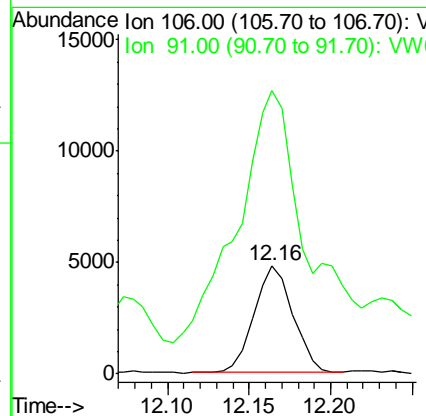
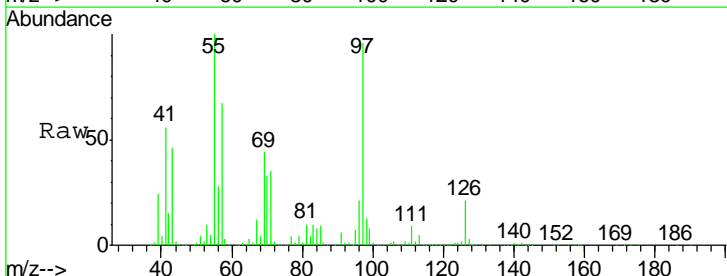
Instrument :  
 MSVOA\_W  
 ClientSampled :

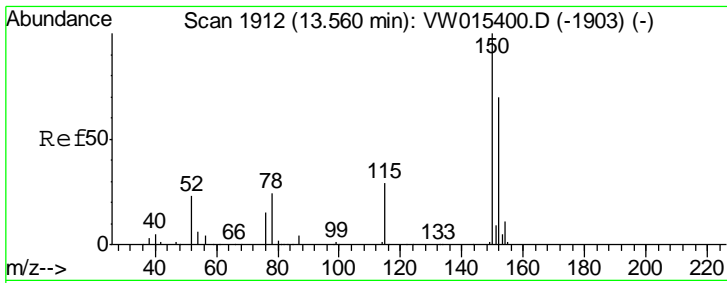
Tgt Ion: 91 Resp: 115196  
 Ion Ratio Lower Upper  
 91 100  
 106 30.8 25.2 37.8



#69  
 o-Xylene  
 Concen: 2.080 ug/l  
 RT: 12.16 min Scan# 1683  
 Delta R.T. 0.00 min  
 Lab File: VW015438.D  
 Acq: 15 May 2020 17:04

Tgt Ion: 106 Resp: 7840  
 Ion Ratio Lower Upper  
 106 100  
 91 411.6 109.0 327.0#

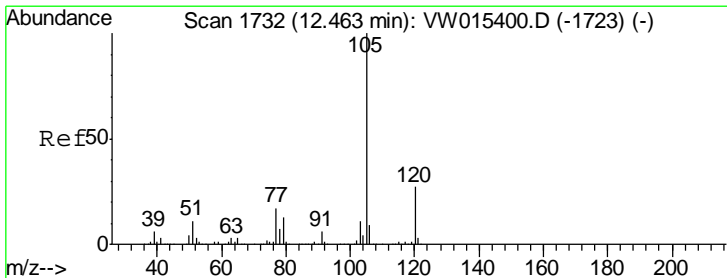
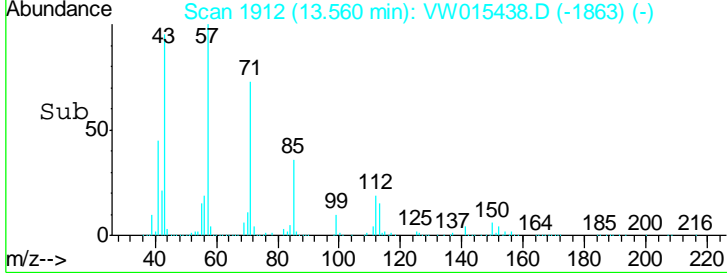
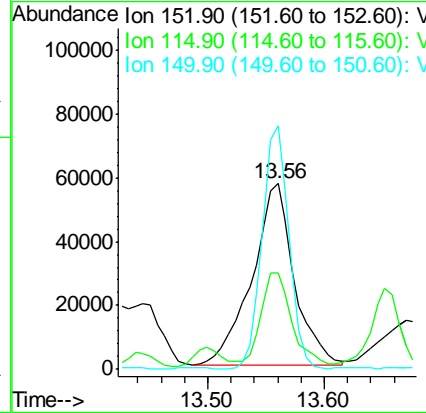
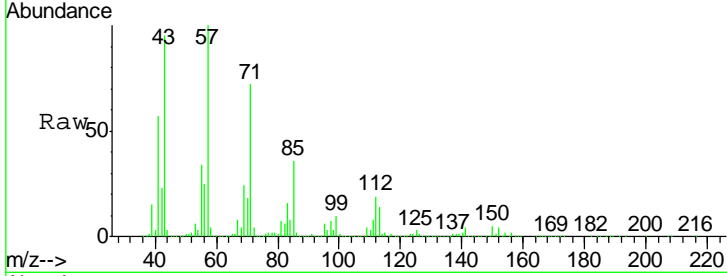




#72  
 1,4-Dichlorobenzene-d4  
 Concen: 50.000 ug/l  
 RT: 13.56 min Scan# 1912  
 Delta R.T. 0.00 min  
 Lab File: VW015438.D  
 Acq: 15 May 2020 17:04

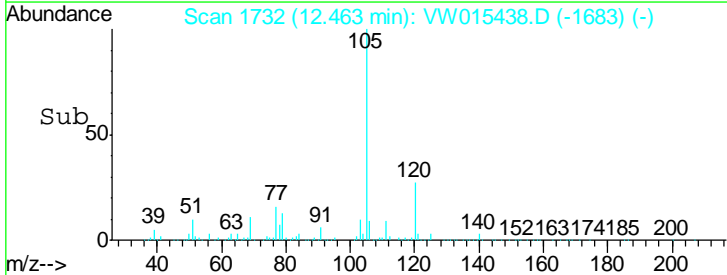
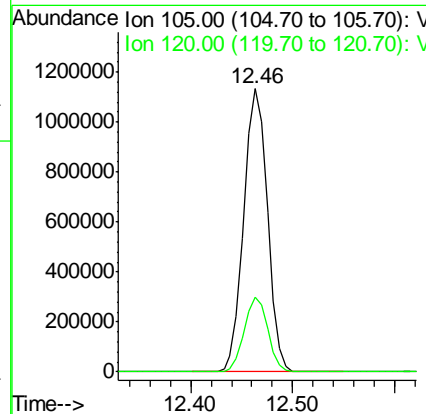
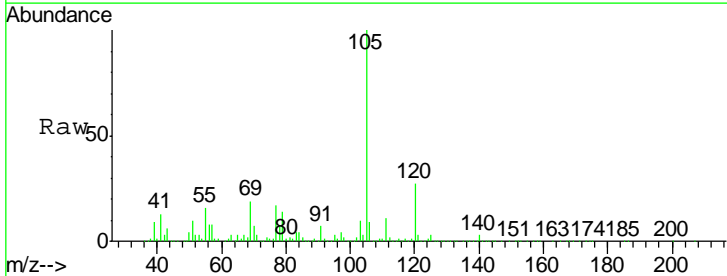
Instrument : MSVOA\_W  
 ClientSampled :

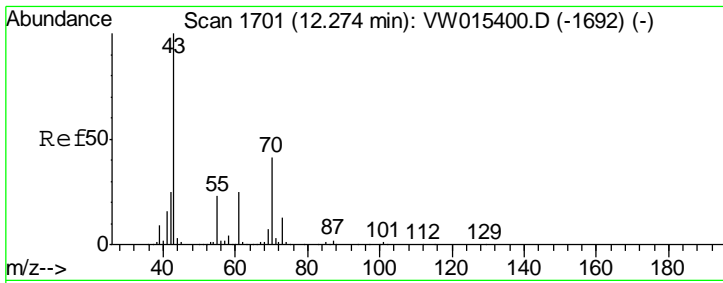
Tgt Ion	Resp	Lower	Upper
152	100		
115	35.9	30.3	90.8
150	85.1	0.0	344.4



#73  
 Isopropylbenzene  
 Concen: 169.630 ug/l  
 RT: 12.46 min Scan# 1732  
 Delta R.T. 0.00 min  
 Lab File: VW015438.D  
 Acq: 15 May 2020 17:04

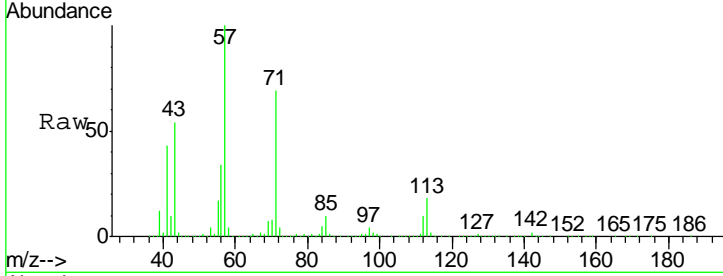
Tgt Ion	Resp	Lower	Upper
105	100		
120	26.3	13.1	39.3





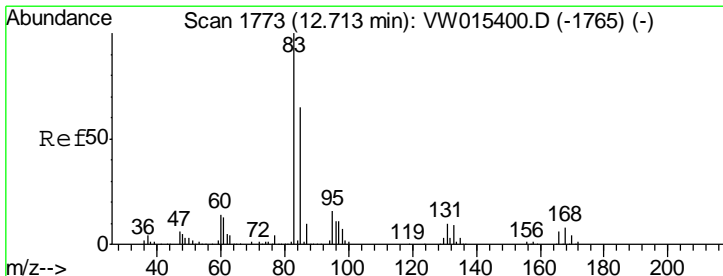
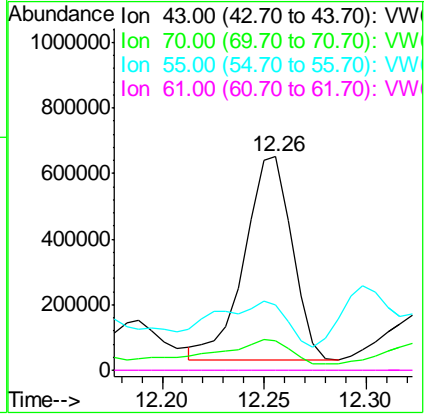
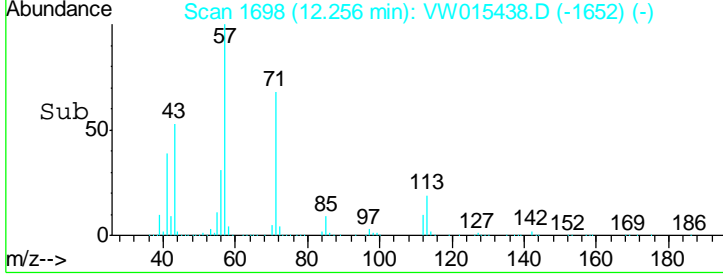
#74  
 N-amyl acetate  
 Concen: 401.718 ug/l  
 RT: 12.26 min Scan# 1698  
 Delta R.T. -0.02 min  
 Lab File: VW015438.D  
 Acq: 15 May 2020 17:04

Instrument : MSVOA\_W  
 ClientSampled :

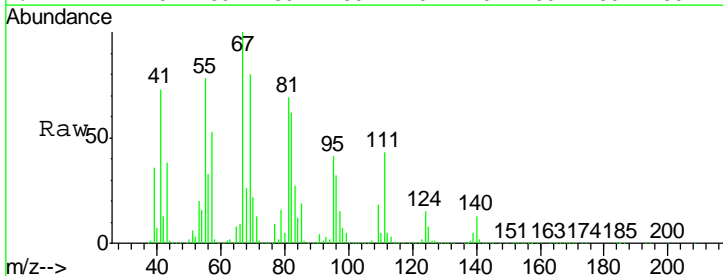


Tgt Ion: 43 Resp: 1017247

Ion	Ratio	Lower	Upper
43	100		
70	18.7	33.4	50.0#
55	34.4	18.9	28.3#
61	0.0	19.4	29.0#

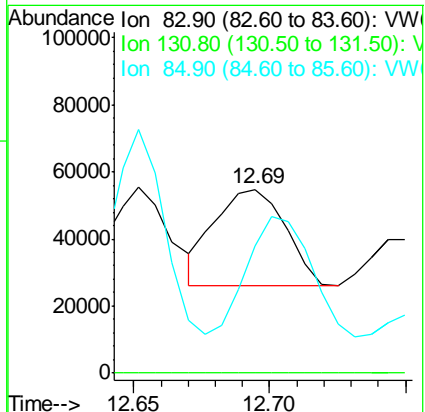
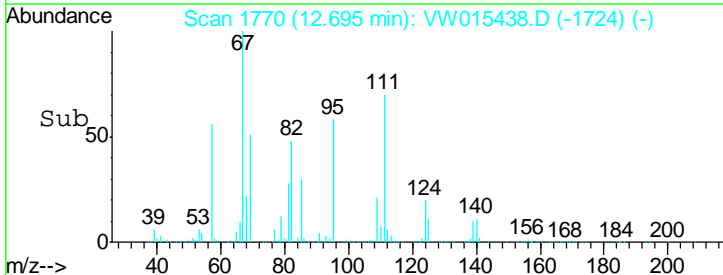


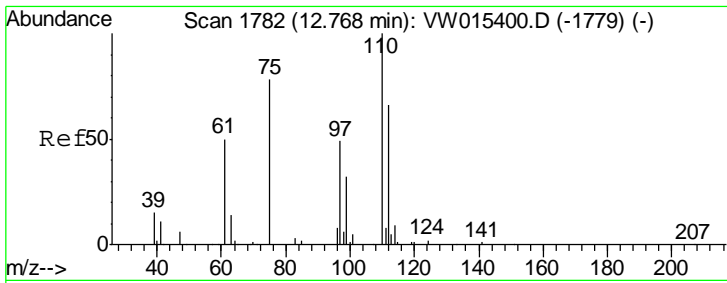
#75  
 1,1,2,2-Tetrachloroethane  
 Concen: 31.087 ug/l  
 RT: 12.69 min Scan# 1770  
 Delta R.T. -0.02 min  
 Lab File: VW015438.D  
 Acq: 15 May 2020 17:04



Tgt Ion: 83 Resp: 52096

Ion	Ratio	Lower	Upper
83	100		
131	0.1	5.1	15.2#
85	112.8	32.2	96.6#

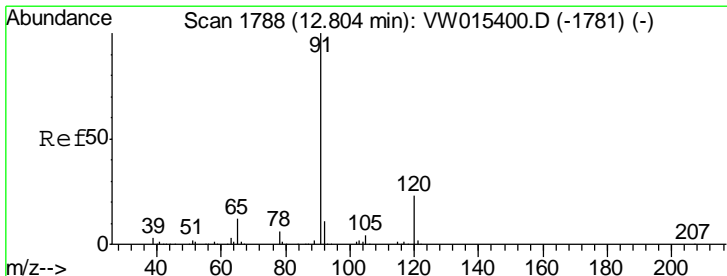
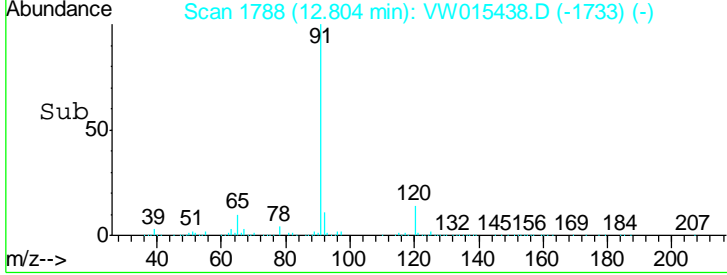
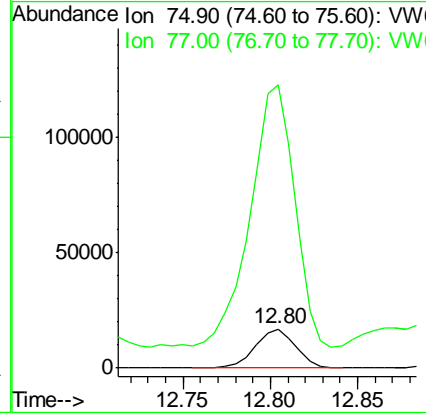
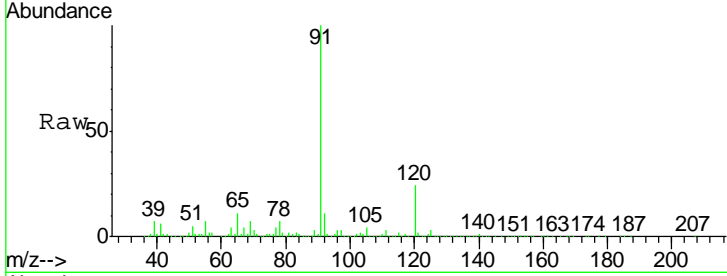




#76  
 1,2,3-Trichloropropane  
 Concen: 22.325 ug/l  
 RT: 12.80 min Scan# 1788  
 Delta R.T. 0.04 min  
 Lab File: VW015438.D  
 Acq: 15 May 2020 17:04

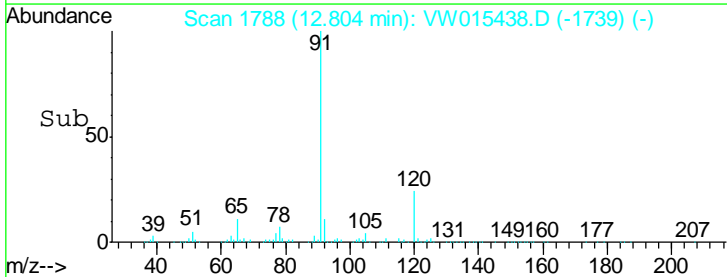
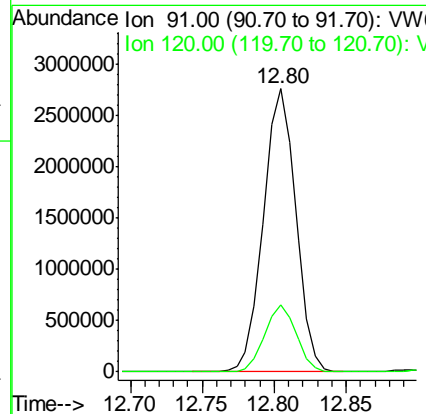
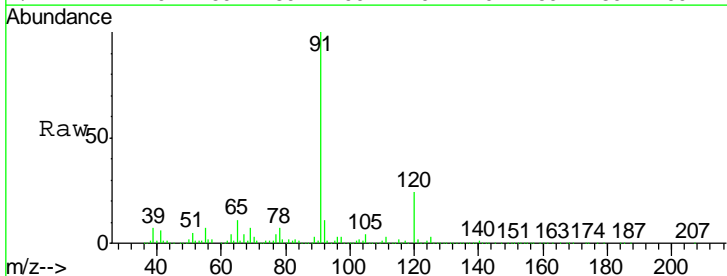
Instrument : MSVOA\_W  
 ClientSampled :

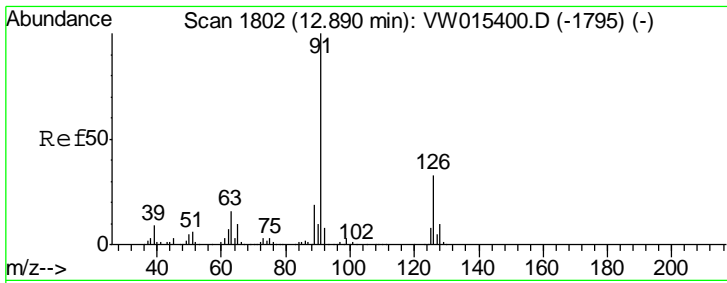
Tgt Ion	Resp	Lower	Upper
75	100		
77	767.1	0.0	0.0#



#78  
 n-propylbenzene  
 Concen: 332.943 ug/l  
 RT: 12.80 min Scan# 1788  
 Delta R.T. 0.00 min  
 Lab File: VW015438.D  
 Acq: 15 May 2020 17:04

Tgt Ion	Resp	Lower	Upper
91	100		
120	23.1	11.2	33.6

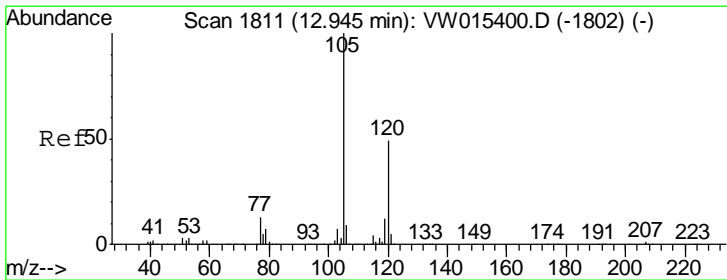
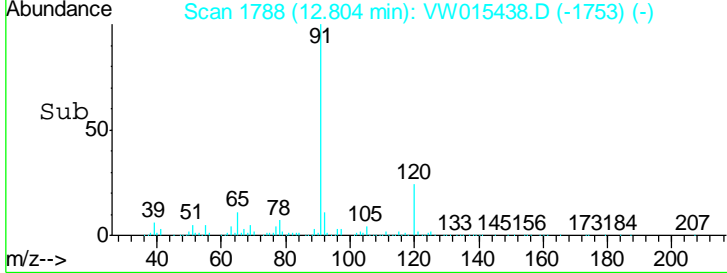
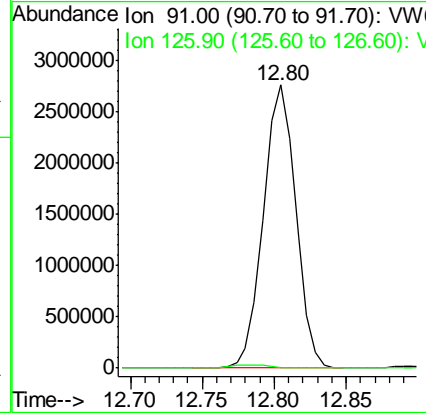
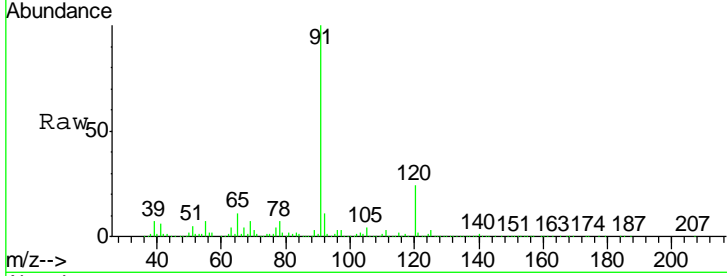




#79  
 2-Chlorotoluene  
 Concen: 590.640 ug/l  
 RT: 12.80 min Scan# 1788  
 Delta R.T. -0.09 min  
 Lab File: VW015438.D  
 Acq: 15 May 2020 17:04

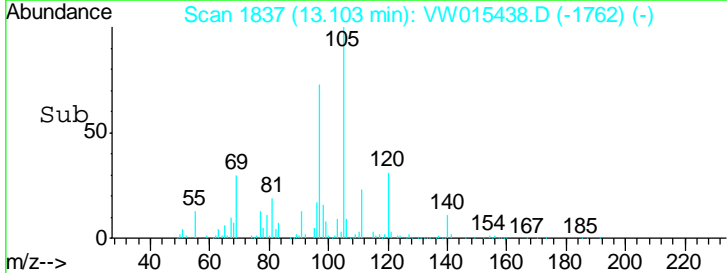
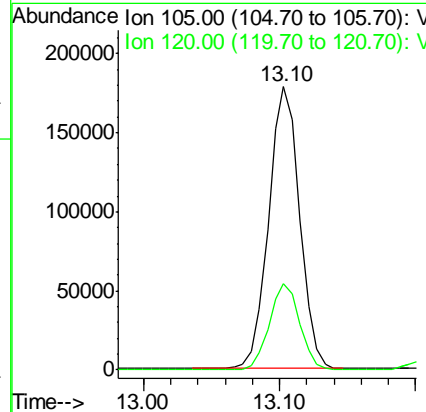
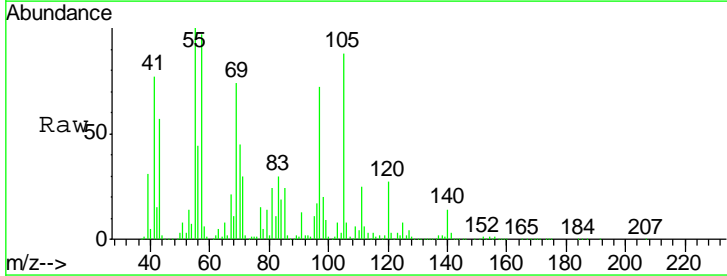
Instrument : MSVOA\_W  
 ClientSampled :

Tgt Ion: 91 Resp: 4279183  
 Ion Ratio Lower Upper  
 91 100  
 126 0.0 16.1 48.2#

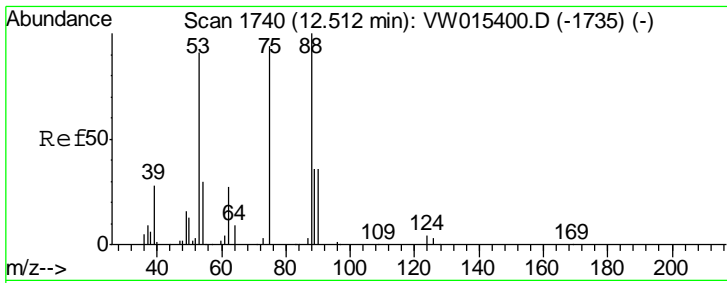


#80  
 1,3,5-Trimethylbenzene  
 Concen: 31.491 ug/l  
 RT: 13.10 min Scan# 1837  
 Delta R.T. 0.16 min  
 Lab File: VW015438.D  
 Acq: 15 May 2020 17:04

Tgt Ion: 105 Resp: 284154  
 Ion Ratio Lower Upper  
 105 100  
 120 30.1 24.2 72.6



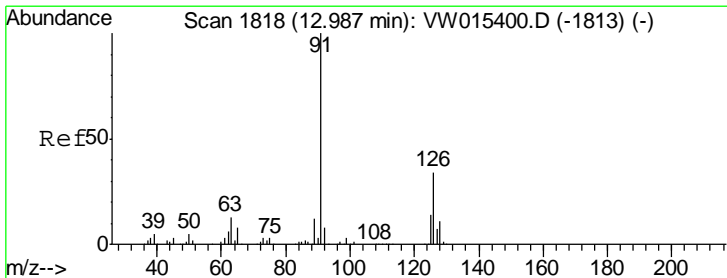
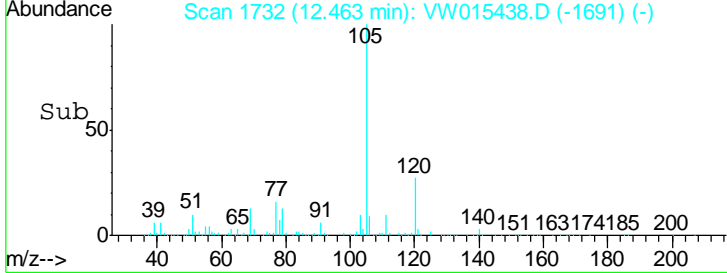
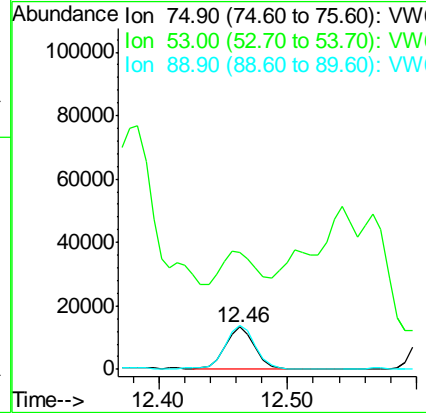
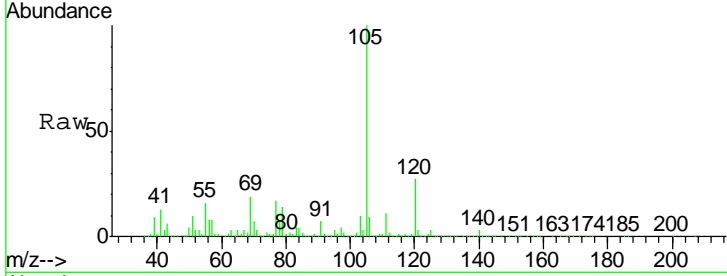




#81  
 trans-1,4-Dichloro-2-butene  
 Concen: 34.509 ug/l  
 RT: 12.46 min Scan# 1732  
 Delta R.T. -0.05 min  
 Lab File: VW015438.D  
 Acq: 15 May 2020 17:04

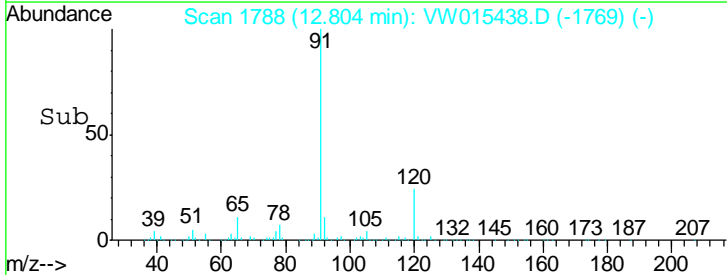
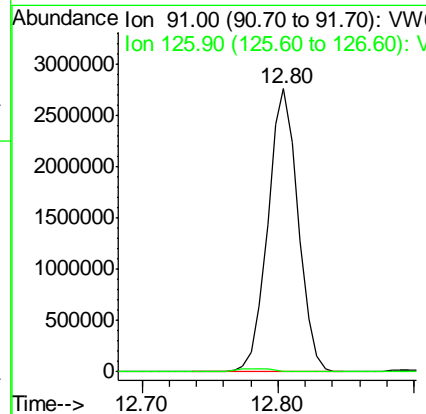
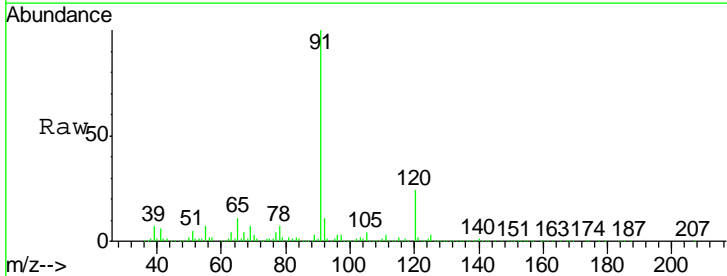
Instrument : MSVOA\_W  
 ClientSampled :

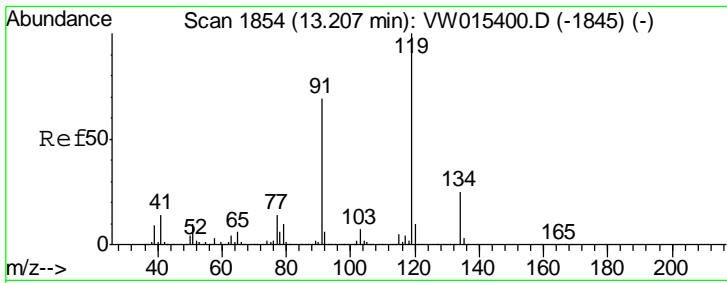
Tgt Ion	Resp	Lower	Upper
75	100		
53	88.1	82.5	123.7
89	109.6	35.8	53.8#



#82  
 4-Chlorotoluene  
 Concen: 557.268 ug/l  
 RT: 12.80 min Scan# 1788  
 Delta R.T. -0.18 min  
 Lab File: VW015438.D  
 Acq: 15 May 2020 17:04

Tgt Ion	Resp	Lower	Upper
91	100		
126	0.0	16.0	47.9#

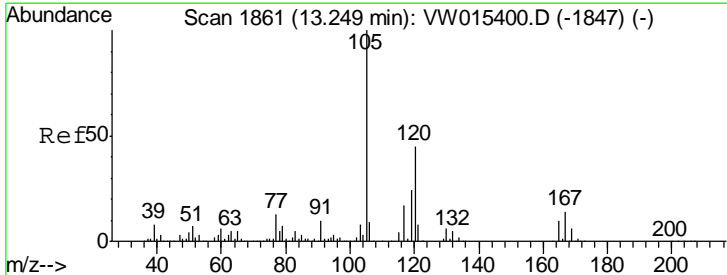
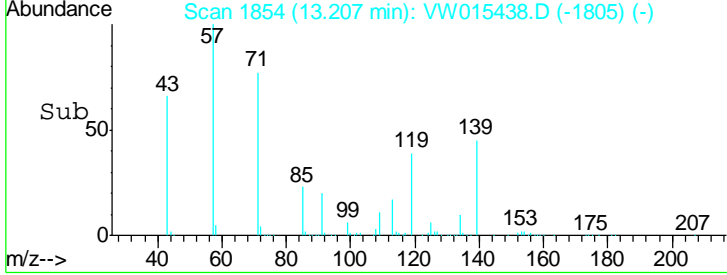
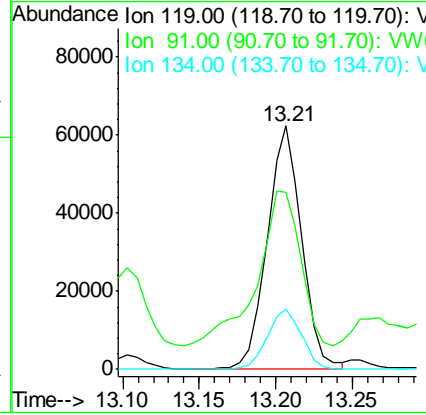
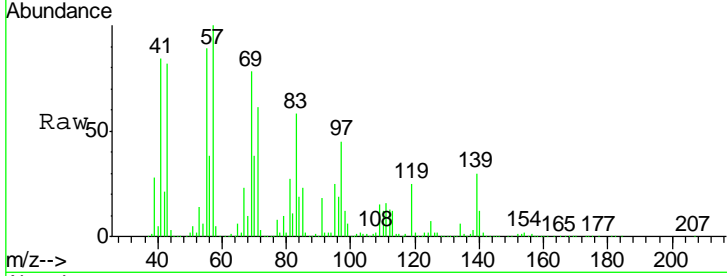




#83  
 tert-Butylbenzene  
 Concen: 12.589 ug/l  
 RT: 13.21 min Scan# 1854  
 Delta R.T. 0.00 min  
 Lab File: VW015438.D  
 Acq: 15 May 2020 17:04

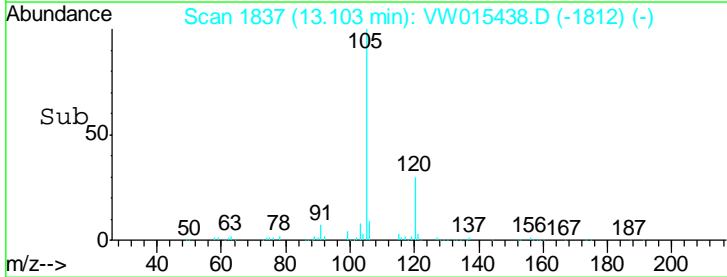
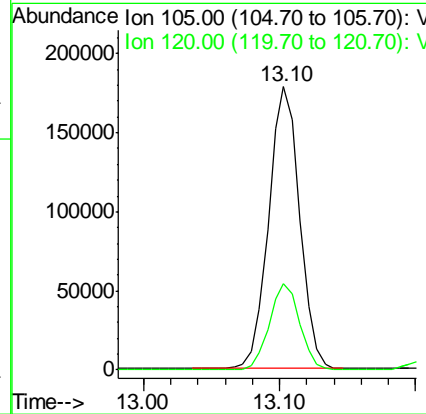
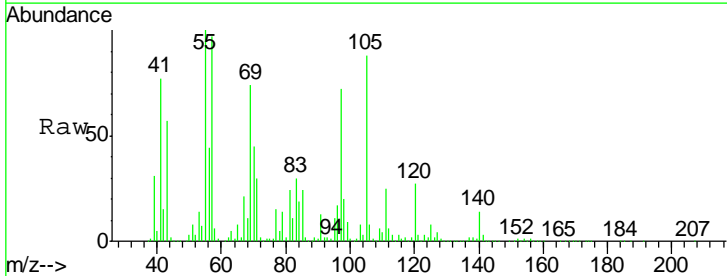
Instrument :  
 MSVOA\_W  
 ClientSampled :

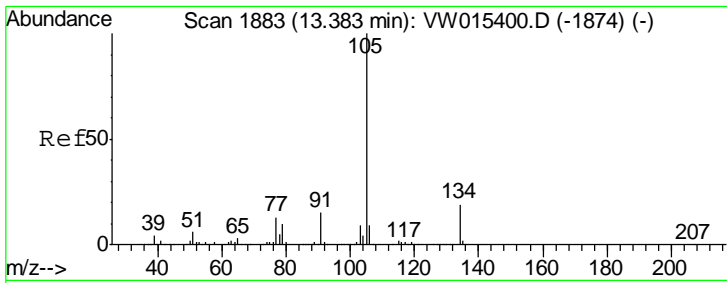
Tgt Ion	Resp	Lower	Upper
119	100		
91	80.8	33.8	101.4
134	25.1	12.3	36.9



#84  
 1,2,4-Trimethylbenzene  
 Concen: 31.478 ug/l  
 RT: 13.10 min Scan# 1837  
 Delta R.T. -0.15 min  
 Lab File: VW015438.D  
 Acq: 15 May 2020 17:04

Tgt Ion	Resp	Lower	Upper
105	100		
120	30.1	22.0	66.0



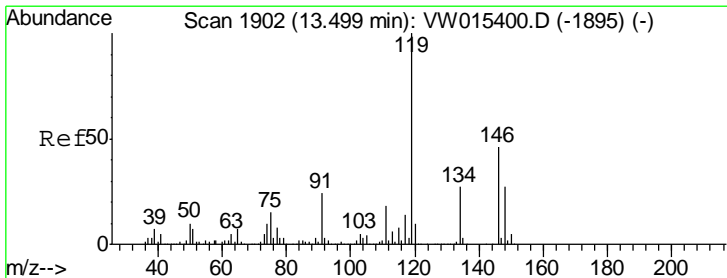
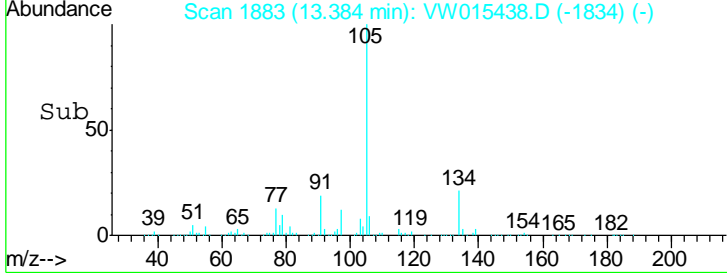
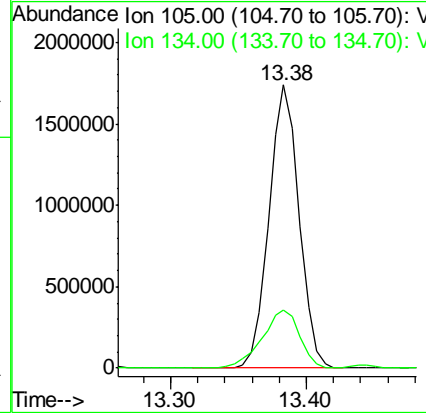
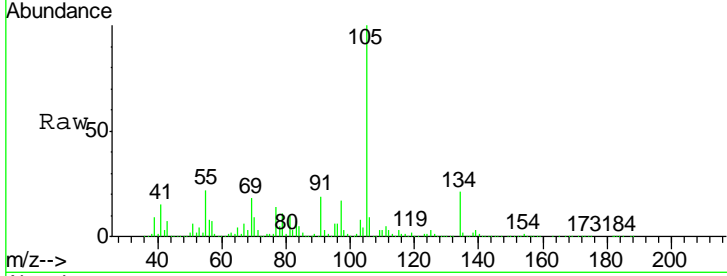


#85  
 sec-Butylbenzene  
 Concen: 247.640 ug/l  
 RT: 13.38 min Scan# 1883  
 Delta R.T. 0.00 min  
 Lab File: VW015438.D  
 Acq: 15 May 2020 17:04

Instrument :  
 MSVOA\_W  
 ClientSampled :

Tgt Ion:105 Resp: 2686497

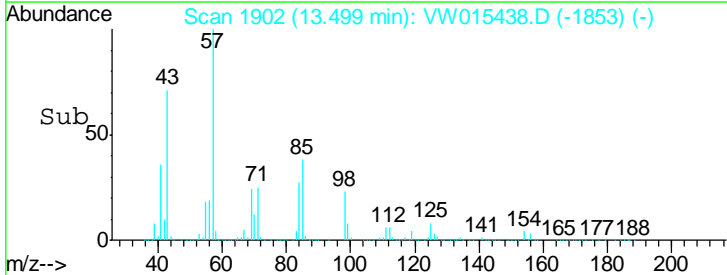
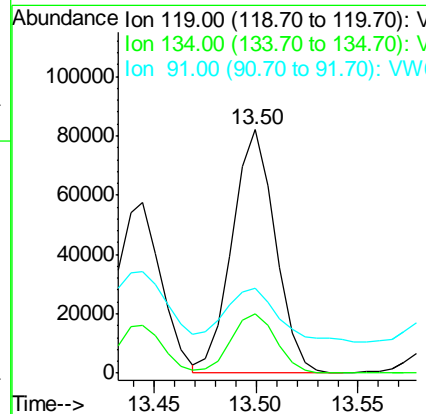
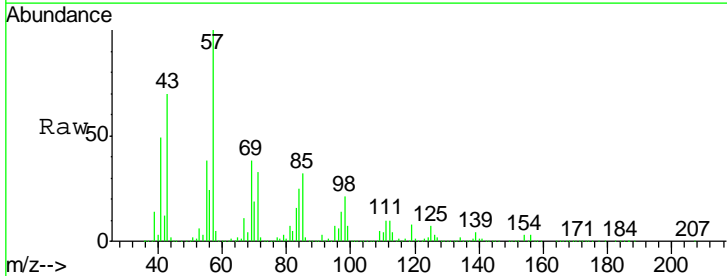
Ion	Ratio	Lower	Upper
105	100		
134	25.7	9.8	29.5

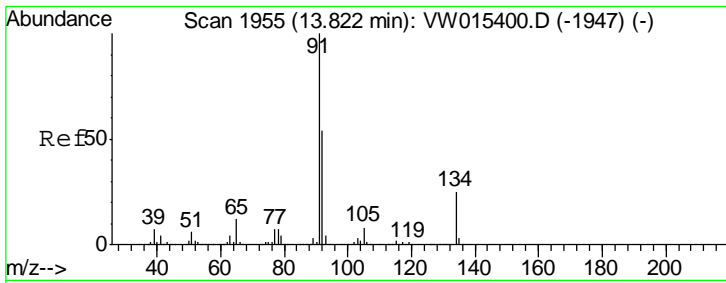


#86  
 p-Isopropyltoluene  
 Concen: 12.061 ug/l  
 RT: 13.50 min Scan# 1902  
 Delta R.T. 0.00 min  
 Lab File: VW015438.D  
 Acq: 15 May 2020 17:04

Tgt Ion:119 Resp: 119331

Ion	Ratio	Lower	Upper
119	100		
134	25.3	12.8	38.4
91	26.9	12.1	36.3

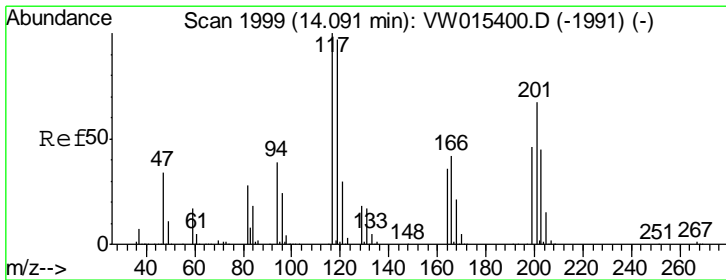
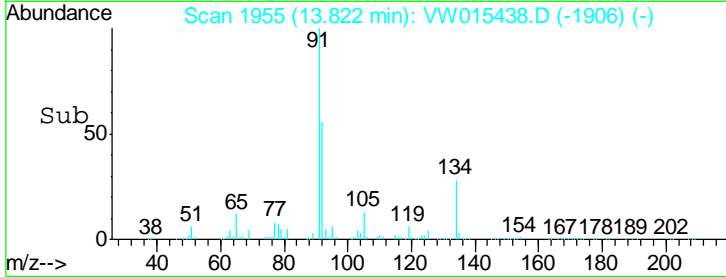
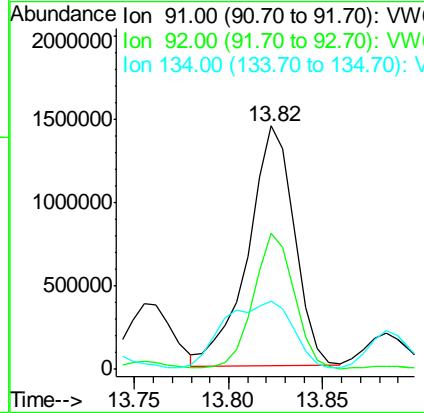
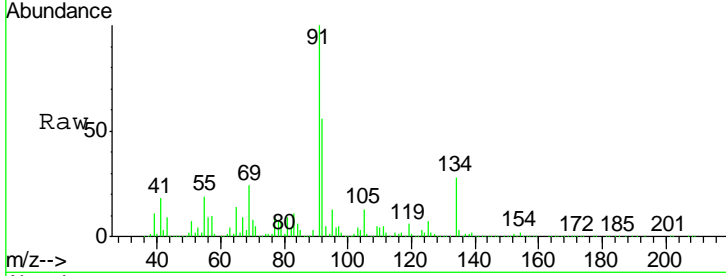




#89  
 n-Butylbenzene  
 Concen: 253.345 ug/l  
 RT: 13.82 min Scan# 1955  
 Delta R.T. 0.00 min  
 Lab File: VW015438.D  
 Acq: 15 May 2020 17:04

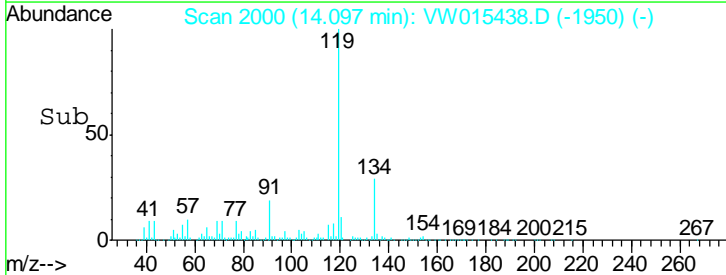
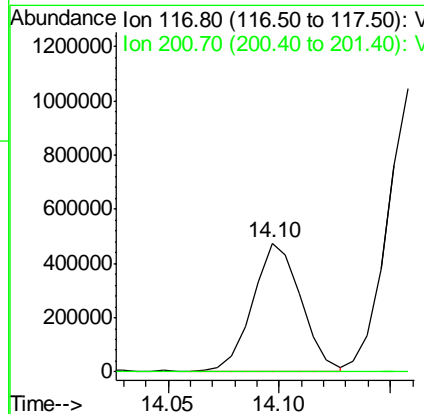
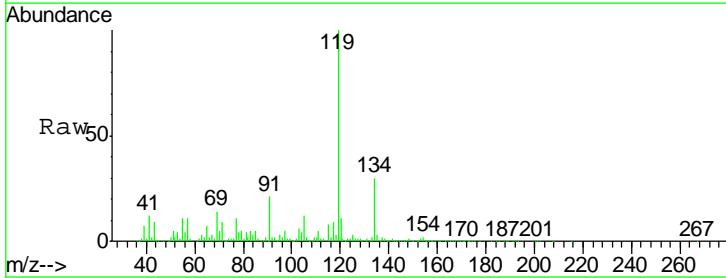
Instrument : MSVOA\_W  
 ClientSampled :

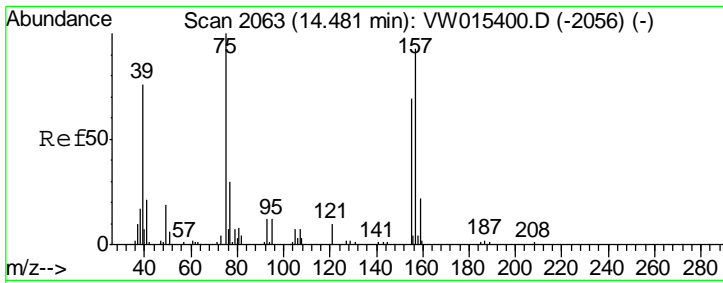
Tgt Ion	Resp	Lower	Upper
91	100		
92	49.4	27.2	81.6
134	42.6	12.6	37.6#



#90  
 Hexachloroethane  
 Concen: 387.277 ug/l  
 RT: 14.10 min Scan# 2000  
 Delta R.T. 0.01 min  
 Lab File: VW015438.D  
 Acq: 15 May 2020 17:04

Tgt Ion	Resp	Lower	Upper
117	100		
201	0.1	35.9	107.8#

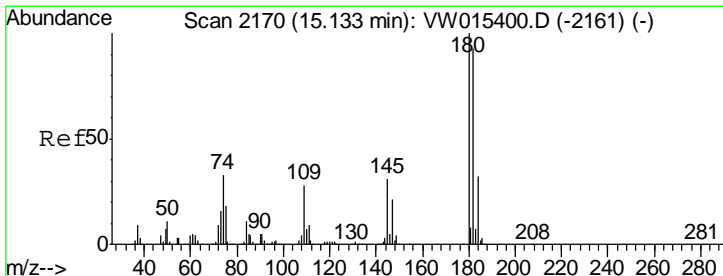
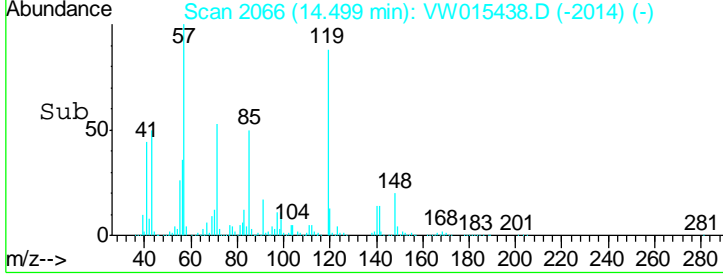
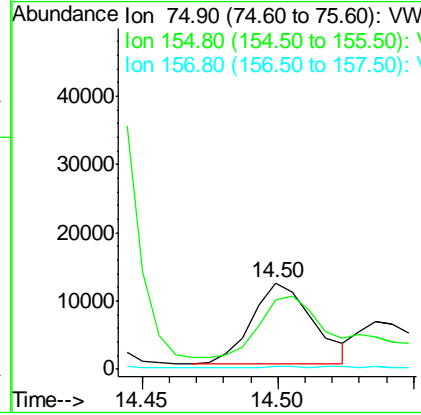
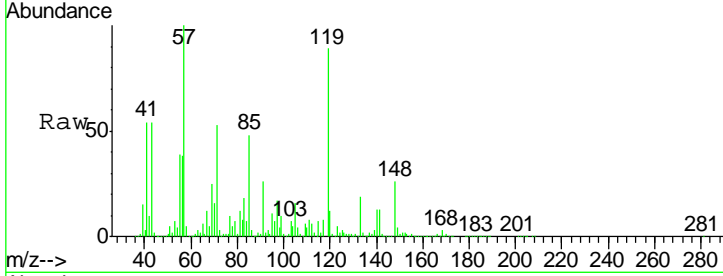




#92  
 1,2-Dibromo-3-Chloropropane  
 Concen: 62.393 ug/l  
 RT: 14.50 min Scan# 2066  
 Delta R.T. 0.02 min  
 Lab File: VW015438.D  
 Acq: 15 May 2020 17:04

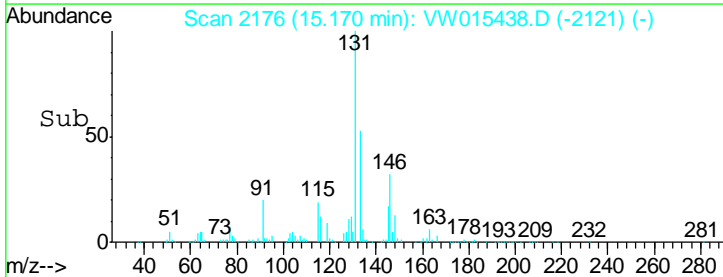
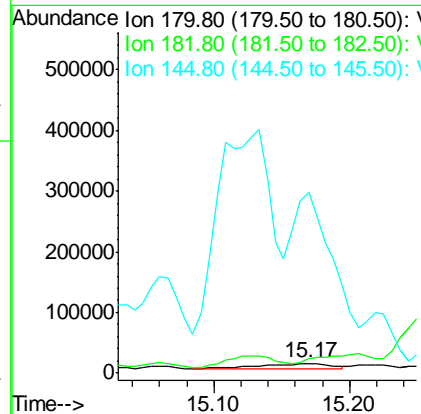
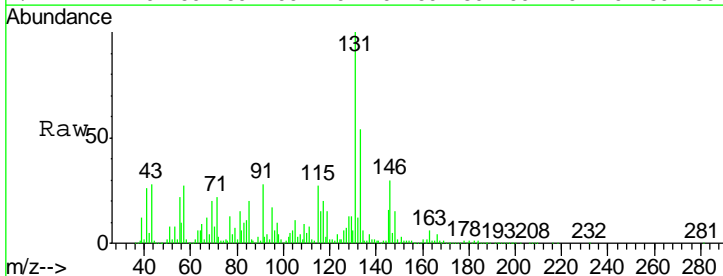
Instrument :  
 MSVOA\_W  
 ClientSampled :

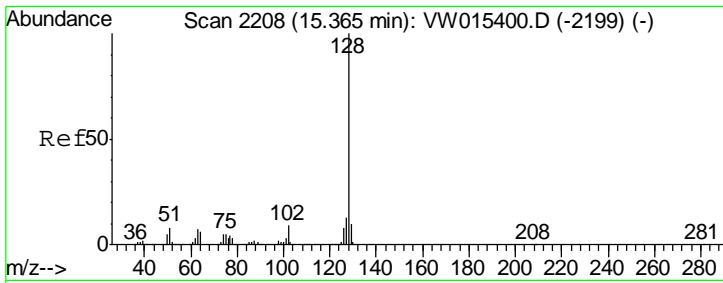
Tgt Ion	Resp	Lower	Upper
75	18254		
75	100		
155	96.3	38.7	116.1
157	1.5	48.1	144.4#



#93  
 1,2,4-Trichlorobenzene  
 Concen: 13.559 ug/l  
 RT: 15.17 min Scan# 2176  
 Delta R.T. 0.04 min  
 Lab File: VW015438.D  
 Acq: 15 May 2020 17:04

Tgt Ion	Resp	Lower	Upper
180	35682		
180	100		
182	0.0	47.2	141.6#
145	1200.4	15.6	46.8#

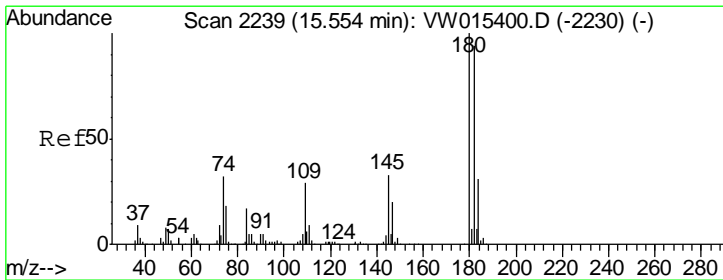
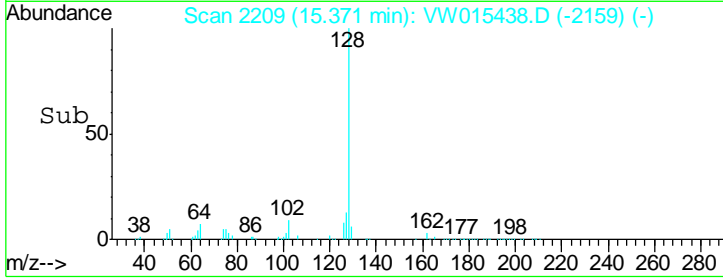
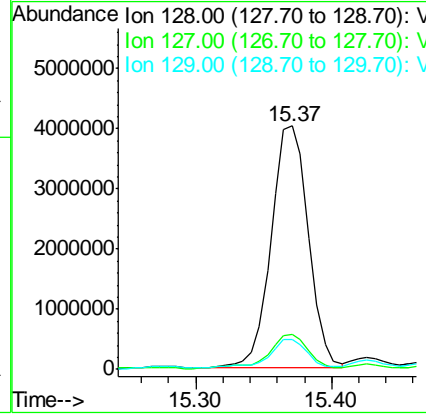
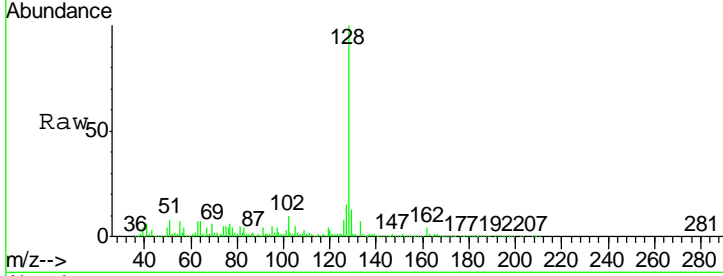




#95  
 Naphthalene  
 Concen: 1626.305 ug/l  
 RT: 15.37 min Scan# 2209  
 Delta R.T. 0.01 min  
 Lab File: VW015438.D  
 Acq: 15 May 2020 17:04

Instrument :  
 MSVOA\_W  
 ClientSampled :

Tgt Ion	Resp	Lower	Upper
128	7666099		
127	14.6	10.5	15.7
129	11.7	8.6	12.8



#96  
 1,2,3-Trichlorobenzene  
 Concen: 20.584 ug/l  
 RT: 15.52 min Scan# 2234  
 Delta R.T. -0.03 min  
 Lab File: VW015438.D  
 Acq: 15 May 2020 17:04

Tgt Ion	Resp	Lower	Upper
180	46544		
182	29.1	47.6	142.8#
145	1061.9	16.3	48.8#

