

Data Path : Z:\voasrv\HPCHEM1\MSVOA_W\Data\VW051622\
 Data File : VW023066.D
 Acq On : 16 May 2022 21:29
 Operator : SY/VA
 Sample : N2843-07
 Misc : 6.46g/10mL/MSVOA_W/SOIL
 ALS Vial : 1 Sample Multiplier: 1

Instrument :
 MSVOA_W
 ClientSampleId :
 EW4H7

Integration Parameters: LSCINT.P

Integrator: RTE
 Smoothing : OFF
 Sampling : 1
 Start Thrs : 0.2
 Stop Thrs : 0

Filtering: 5
 Min Area: 0 % of largest Peak
 Max Peaks: 100
 Peak Location: TOP

If leading or trailing edge < 100 prefer < Baseline drop else tangent >
 Peak separation: 5

Method : Z:\voasrv\HPCHEM1\MSVOA_W\Method\SFAMWLM050222SMA.M
 Title : SFAM01.0

Signal : TIC: VW023066.D\data.ms

peak #	R.T. min	first scan	max scan	last scan	PK TY	peak height	corr. area	corr. % max.	% of total
1	2.349	69	73	81	rVB	75759	126630	15.19%	2.240%
2	2.879	156	160	173	rVB	52288	119453	14.33%	2.113%
3	4.019	334	347	361	rBV	74158	244791	29.36%	4.330%
4	4.519	427	429	432	rBV3	1004	1078	0.13%	0.019%
5	4.623	439	446	450	rBV8	2052	4354	0.52%	0.077%
6	4.696	456	458	463	rVB6	1377	1817	0.22%	0.032%
7	4.781	471	472	478	rVB5	1021	1468	0.18%	0.026%
8	4.836	479	481	484	rVB4	970	821	0.10%	0.015%
9	4.922	484	495	498	rBV5	6476	18822	2.26%	0.333%
10	5.068	517	519	523	rBV5	1034	1446	0.17%	0.026%
11	5.111	523	526	528	rBV4	1093	1352	0.16%	0.024%
12	5.391	569	572	573	rBV3	1037	1042	0.12%	0.018%
13	5.434	575	579	584	rBV6	1350	2817	0.34%	0.050%
14	5.495	588	589	592	rVB3	964	867	0.10%	0.015%
15	5.598	604	606	610	rVB4	1217	1410	0.17%	0.025%
16	5.708	621	624	626	rVB3	1054	891	0.11%	0.016%
17	5.836	643	645	646	rBV2	957	863	0.10%	0.015%
18	5.885	651	653	654	rBV2	777	796	0.10%	0.014%
19	5.921	657	659	660	rBV2	2318	1674	0.20%	0.030%
20	6.324	723	725	729	rVB4	932	1090	0.13%	0.019%
21	6.464	746	748	750	rBV3	760	781	0.09%	0.014%
22	6.494	750	753	755	rBV3	682	984	0.12%	0.017%
23	6.665	776	781	782	rBV5	880	1314	0.16%	0.023%
24	6.726	789	791	795	rVB5	888	1042	0.12%	0.018%
25	6.921	820	823	827	rVB6	1023	1491	0.18%	0.026%
26	6.976	827	832	833	rBV3	912	1590	0.19%	0.028%
27	7.086	842	850	860	rBV	25989	84957	10.19%	1.503%
28	7.391	899	900	904	rVB3	1035	1424	0.17%	0.025%
29	7.445	906	909	911	rBV3	1055	1148	0.14%	0.020%
30	7.586	928	932	933	rBV4	919	1123	0.13%	0.020%
31	7.647	933	942	953	rVB	153543	382709	45.90%	6.769%
32	7.842	971	974	976	rBV3	726	981	0.12%	0.017%
33	8.080	1009	1013	1014	rBV3	893	1357	0.16%	0.024%
34	8.122	1016	1020	1023	rVB4	951	1300	0.16%	0.023%
35	8.147	1023	1024	1027	rBV3	945	902	0.11%	0.016%
36	8.275	1035	1045	1059	rBV2	263909	833806	100.00%	14.747%

Data Path : Z:\voasrv\HPCHEM1\MSVOA_W\Data\VW051622\
 Data File : VW023066.D
 Acq On : 16 May 2022 21:29
 Operator : SY/VA
 Sample : N2843-07
 Misc : 6.46g/10mL/MSVOA_W/SOIL
 ALS Vial : 1 Sample Multiplier: 1

Instrument :
 MSVOA_W
 ClientSampleId :
 EW4H7

Integration Parameters: LSCINT.P

Integrator: RTE
 Smoothing : OFF
 Sampling : 1
 Start Thrs: 0.2
 Stop Thrs : 0

Filtering: 5
 Min Area: 0 % of largest Peak
 Max Peaks: 100
 Peak Location: TOP

If leading or trailing edge < 100 prefer < Baseline drop else tangent >
 Peak separation: 5

Method : Z:\voasrv\HPCHEM1\MSVOA_W\Method\SFAMWLM050222SMA.M
 Title : SFAM01.0

37	8.842	1130	1138	1151	rBV	272415	547484	65.66%	9.683%
38	9.195	1194	1196	1198	rVB3	1301	1018	0.12%	0.018%
39	9.274	1198	1209	1220	rBV	202699	414533	49.72%	7.332%
40	9.409	1229	1231	1234	rVB3	1157	935	0.11%	0.017%
41	9.451	1234	1238	1240	rVB4	713	818	0.10%	0.014%
42	9.652	1270	1271	1273	rBV2	1124	1111	0.13%	0.020%
43	9.738	1283	1285	1287	rBV2	1086	821	0.10%	0.015%
44	9.890	1306	1310	1313	rBV6	1577	1956	0.23%	0.035%
45	9.963	1320	1322	1324	rVB3	1449	1204	0.14%	0.021%
46	10.036	1324	1334	1342	rBV	78766	151893	18.22%	2.687%
47	10.232	1363	1366	1369	rBV4	1104	1610	0.19%	0.028%
48	10.323	1372	1381	1388	rBV	345241	605551	72.62%	10.710%
49	10.445	1398	1401	1403	rBV4	1107	1477	0.18%	0.026%
50	10.579	1416	1423	1434	rBV	54038	97635	11.71%	1.727%
51	10.701	1439	1443	1445	rBV3	2389	3411	0.41%	0.060%
52	10.774	1453	1455	1457	rVB3	1304	1067	0.13%	0.019%
53	10.927	1473	1480	1492	rBV	108528	208863	25.05%	3.694%
54	11.140	1514	1515	1517	rBV2	1031	806	0.10%	0.014%
55	11.237	1529	1531	1536	rVB6	999	1309	0.16%	0.023%
56	11.634	1588	1596	1608	rBV	327401	579927	69.55%	10.257%
57	11.792	1619	1622	1624	rVB4	893	819	0.10%	0.014%
58	11.835	1626	1629	1634	rVV6	1566	3207	0.38%	0.057%
59	11.878	1634	1636	1640	rVB5	993	1077	0.13%	0.019%
60	12.073	1666	1668	1671	rVV4	1085	1060	0.13%	0.019%
61	12.140	1677	1679	1681	rVV2	1037	922	0.11%	0.016%
62	12.170	1681	1684	1690	rVB8	1726	3804	0.46%	0.067%
63	12.243	1693	1696	1698	rBV3	1704	1546	0.19%	0.027%
64	12.286	1700	1703	1705	rBV3	788	956	0.11%	0.017%
65	12.371	1716	1717	1722	rVB5	1434	1092	0.13%	0.019%
66	12.457	1729	1731	1732	rBV2	920	798	0.10%	0.014%
67	12.524	1737	1742	1744	rBV5	2545	4474	0.54%	0.079%
68	12.603	1750	1755	1762	rVB8	4079	8129	0.97%	0.144%
69	12.688	1762	1769	1777	rBV	191789	323495	38.80%	5.722%
70	12.865	1795	1798	1799	rBV	896	860	0.10%	0.015%
71	12.938	1802	1810	1813	rBV9	2434	5065	0.61%	0.090%
72	13.030	1823	1825	1828	rBV4	1176	1234	0.15%	0.022%
73	13.194	1850	1852	1856	rVB4	1152	906	0.11%	0.016%
74	13.249	1858	1861	1864	rVB5	2074	2556	0.31%	0.045%
75	13.335	1873	1875	1878	rBV2	658	827	0.10%	0.015%
76	13.475	1894	1898	1900	rBV4	1863	2614	0.31%	0.046%

Data Path : Z:\voasrv\HPCHEM1\MSVOA_W\Data\VW051622\
 Data File : VW023066.D
 Acq On : 16 May 2022 21:29
 Operator : SY/VA
 Sample : N2843-07
 Misc : 6.46g/10mL/MSVOA_W/SOIL
 ALS Vial : 1 Sample Multiplier: 1

Instrument :
 MSVOA_W
 ClientSampleId :
 EW4H7

Integration Parameters: LSCINT.P

Integrator: RTE
 Smoothing : OFF Filtering: 5
 Sampling : 1 Min Area: 0 % of largest Peak
 Start Thrs: 0.2 Max Peaks: 100
 Stop Thrs : 0 Peak Location: TOP

If leading or trailing edge < 100 prefer < Baseline drop else tangent >
 Peak separation: 5

Method : Z:\voasrv\HPCHEM1\MSVOA_W\Method\SFAMWLM050222SMA.M
 Title : SFAM01.0

77	13.554	1905	1911	1922	rVV	249144	406754	48.78%	7.194%
78	13.792	1949	1950	1952	rBV2	1442	1406	0.17%	0.025%
79	13.853	1953	1960	1973	rVB	223626	375987	45.09%	6.650%
80	14.060	1991	1994	1999	rVV4	2562	4267	0.51%	0.075%
81	14.103	1999	2001	2003	rVV2	1210	877	0.11%	0.016%
82	14.225	2019	2021	2024	rVV3	897	863	0.10%	0.015%
83	14.267	2024	2028	2031	rBV5	1731	2820	0.34%	0.050%
84	14.450	2055	2058	2059	rBV3	1321	1322	0.16%	0.023%
85	14.511	2065	2068	2069	rBV4	1132	982	0.12%	0.017%
86	14.621	2085	2086	2089	rVB3	1371	1134	0.14%	0.020%
87	14.719	2098	2102	2105	rVB6	1155	1572	0.19%	0.028%
88	14.767	2108	2110	2113	rBV4	1163	1305	0.16%	0.023%
89	14.847	2121	2123	2128	rVB4	891	1025	0.12%	0.018%
90	14.895	2128	2131	2133	rVB4	1120	891	0.11%	0.016%
91	14.938	2133	2138	2139	rBV4	1523	1780	0.21%	0.031%
92	15.054	2155	2157	2159	rBV3	1214	910	0.11%	0.016%
93	15.365	2204	2208	2211	rBV6	1307	2145	0.26%	0.038%
94	15.731	2266	2268	2272	rBV5	789	864	0.10%	0.015%
95	15.785	2275	2277	2279	rBV2	1155	941	0.11%	0.017%
96	15.840	2285	2286	2290	rBV3	1105	1172	0.14%	0.021%
97	15.920	2297	2299	2300	rBV2	1148	1125	0.13%	0.020%
98	16.054	2318	2321	2323	rBV4	1341	1660	0.20%	0.029%
99	16.554	2400	2403	2406	rBV3	1246	1903	0.23%	0.034%
100	16.694	2424	2426	2429	rBV4	1047	938	0.11%	0.017%

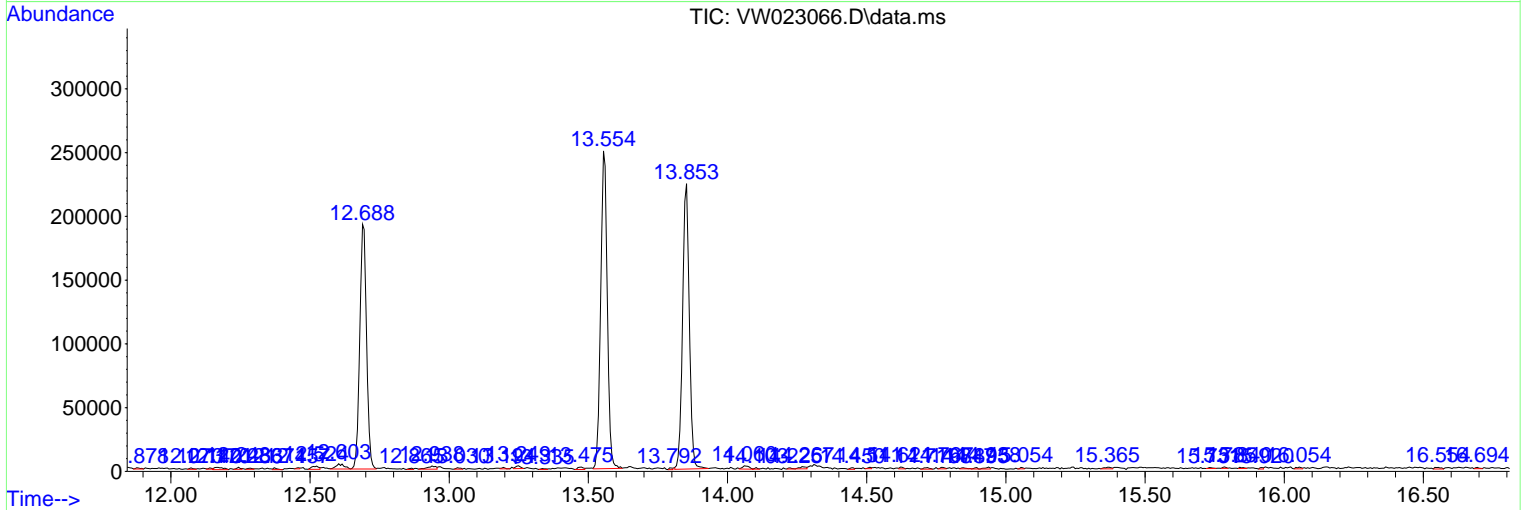
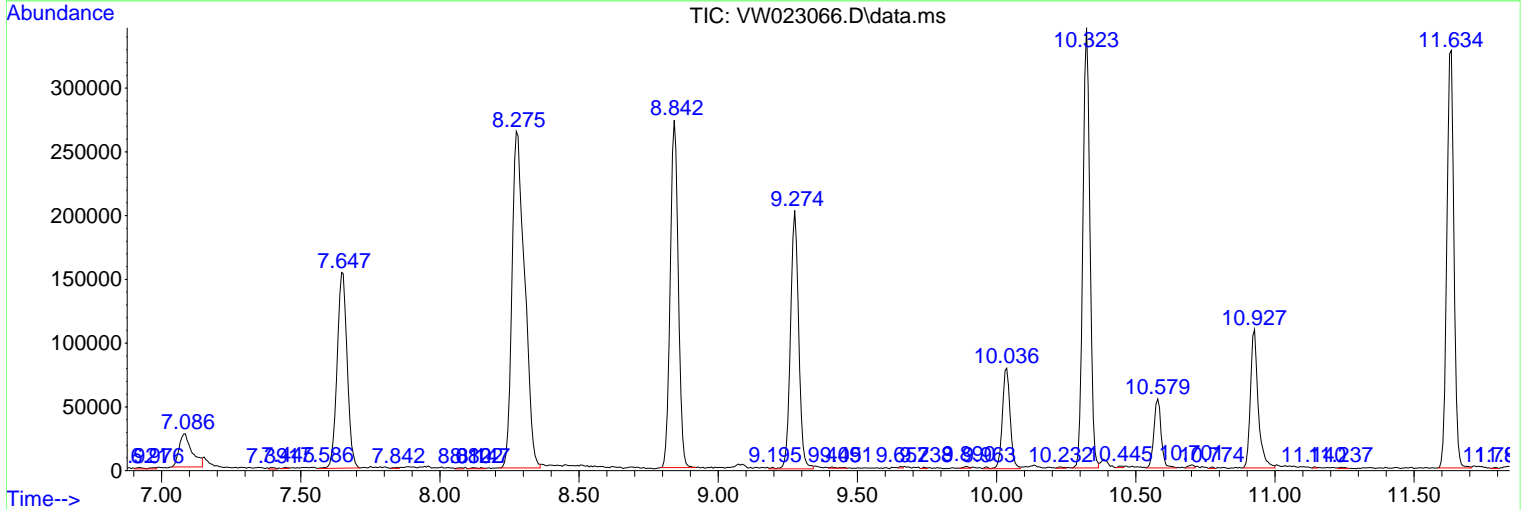
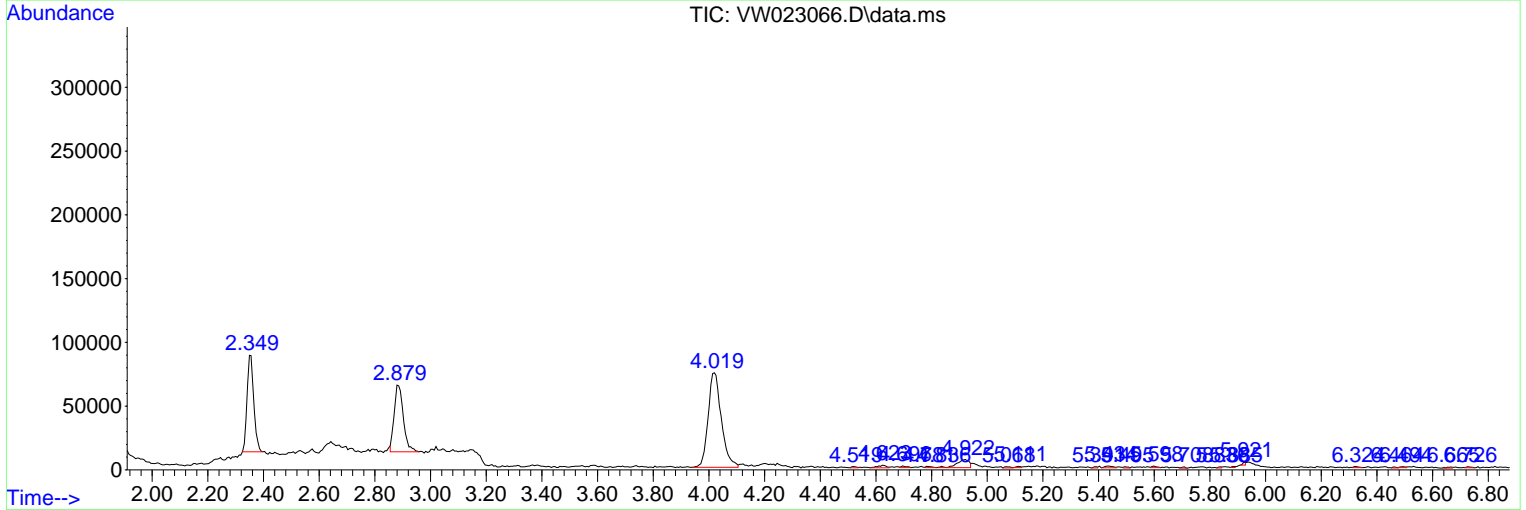
Sum of corrected areas: 5653904

Data Path : Z:\voasrv\HPCHEM1\MSVOA_W\Data\VW051622\
 Data File : VW023066.D
 Acq On : 16 May 2022 21:29
 Operator : SY/VA
 Sample : N2843-07
 Misc : 6.46g/10mL/MSVOA_W/SOIL
 ALS Vial : 1 Sample Multiplier: 1

Instrument :
 MSVOA_W
 ClientSampleId :
 EW4H7

Quant Method : Z:\voasrv\HPCHEM1\MSVOA_W\Method\SFAMWLM050222SMA.M
 Quant Title : SFAM01.0

TIC Library : C:\Database\NIST20.L
 TIC Integration Parameters: LSCINT.P



Library Search Compound Report

Data Path : Z:\voasrv\HPCHEM1\MSVOA_W\Data\VW051622\
Data File : VW023066.D
Acq On : 16 May 2022 21:29
Operator : SY/VA
Sample : N2843-07
Misc : 6.46g/10mL/MSVOA_W/SOIL
ALS Vial : 1 Sample Multiplier: 1

Instrument :
MSVOA_W
ClientSampleId :
EW4H7

Quant Method : Z:\voasrv\HPCHEM1\MSVOA_W\Method\SFAMWLM050222SMA.M
Quant Title : SFAM01.0

TIC Library : C:\Database\NIST20.L
TIC Integration Parameters: LSCINT.P

No Library Search Compounds Detected

Data Path : Z:\voasrv\HPCHEM1\MSVOA_W\Data\VW051622\
Data File : VW023066.D
Acq On : 16 May 2022 21:29
Operator : SY/VA
Sample : N2843-07
Misc : 6.46g/10mL/MSVOA_W/SOIL
ALS Vial : 1 Sample Multiplier: 1

Instrument :
MSVOA_W
ClientSampleId :
EW4H7

Quant Method : Z:\voasrv\HPCHEM1\MSVOA_W\Method\SFAMWLM050222SMA.M
Quant Title : SFAM01.0

TIC Library : C:\Database\NIST0.L
TIC Integration Parameters: LSCINT.P

TIC Top Hit name	RT	EstConc	Units	Response	--Internal Standard--		
					#	RT	Resp Conc
