

Data Path : Z:\VOASRV\HPCHEM1\MSVOA W\DATA\VW051719\  
 Data File : VW010436.D  
 Acq On : 18 May 2019 03:40  
 Operator : SY/VA  
 Sample : K2906-01  
 Misc : 7.13G/5ML/MSVOA W/SOIL  
 ALS Vial : 27 Sample Multiplier: 1

Instrument :  
 MSVOA\_W  
 ClientSampleId :  
 FESB-11(7-7.5)

Integration Parameters: RTEINT.P

Integrator: RTE  
 Smoothing : ON Filtering: 5  
 Sampling : 1 Min Area: 3 % of largest Peak  
 Start Thrs: 0.2 Max Peaks: 100  
 Stop Thrs : 0 Peak Location: TOP

If leading or trailing edge < 100 prefer < Baseline drop else tangent >  
 Peak separation: 5

Method : Z:\VOASRV\HPCHEM1\MSVOA\_W\METHOD\82W051719S.M  
 Title : SW846 8260

Signal : TIC

peak #	R.T. min	first scan	max scan	last scan	PK TY	peak height	corr. area	corr. % max.	% of total
1	1.959	5	9	25	rVB2	60781	136032	4.24%	0.779%
2	2.221	46	52	53	rBV5	24778	45864	1.43%	0.263%
3	2.343	67	72	77	rVB	129346	195915	6.11%	1.121%
4	2.635	115	120	133	rVB2	60251	157866	4.92%	0.904%
5	4.915	483	494	505	rBV2	58982	189127	5.90%	1.083%
6	7.884	970	981	986	rBV	413736	1003177	31.28%	5.742%
7	7.945	986	991	1003	rVB	775478	1727547	53.87%	9.888%
8	8.305	1040	1050	1061	rBV	357068	833641	25.99%	4.772%
9	8.842	1130	1138	1149	rBV	1156050	2279091	71.06%	13.045%
10	10.323	1373	1381	1387	rBV	1840709	3207081	100.00%	18.356%
11	10.390	1387	1392	1401	rVB	459831	820293	25.58%	4.695%
12	11.634	1588	1596	1606	rBV	1428764	2480665	77.35%	14.199%
13	11.731	1606	1612	1618	rVB	25655	50101	1.56%	0.287%
14	11.841	1625	1630	1637	rVB2	20336	39251	1.22%	0.225%
15	12.170	1677	1684	1692	rBV2	21917	42782	1.33%	0.245%
16	12.621	1747	1758	1767	rBV	1137377	1905807	59.42%	10.908%
17	12.871	1793	1799	1807	rBV4	13166	32695	1.02%	0.187%
18	13.560	1905	1912	1921	rVB	1410117	2270979	70.81%	12.998%
19	14.078	1989	1997	2005	rVB2	26682	53244	1.66%	0.305%

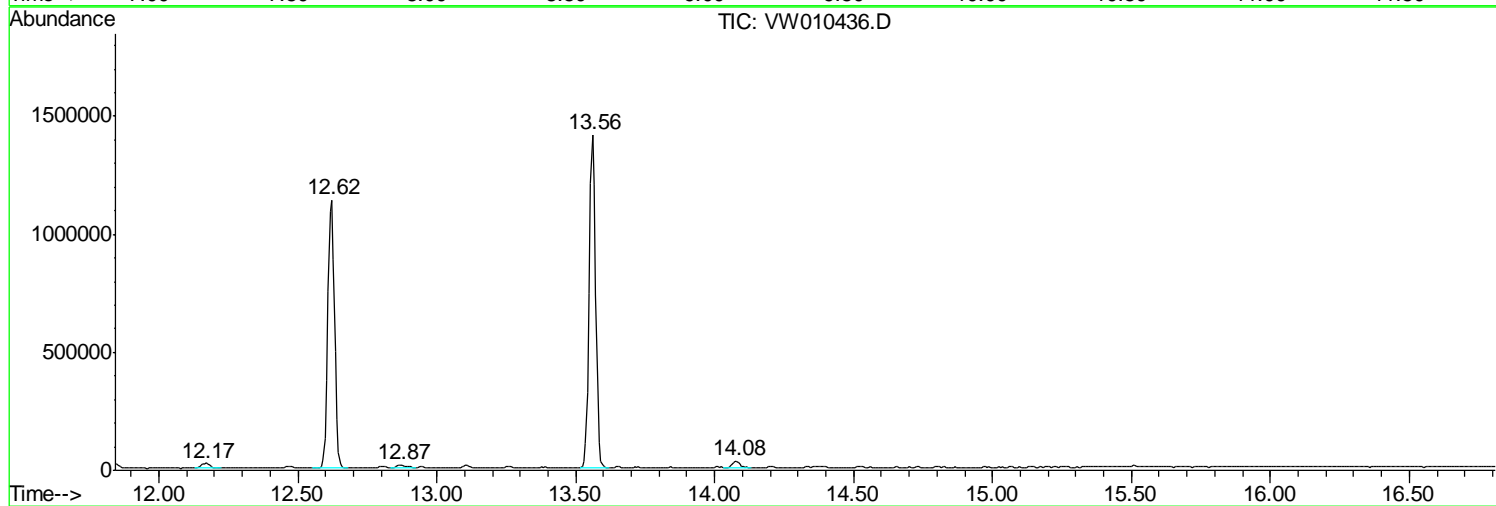
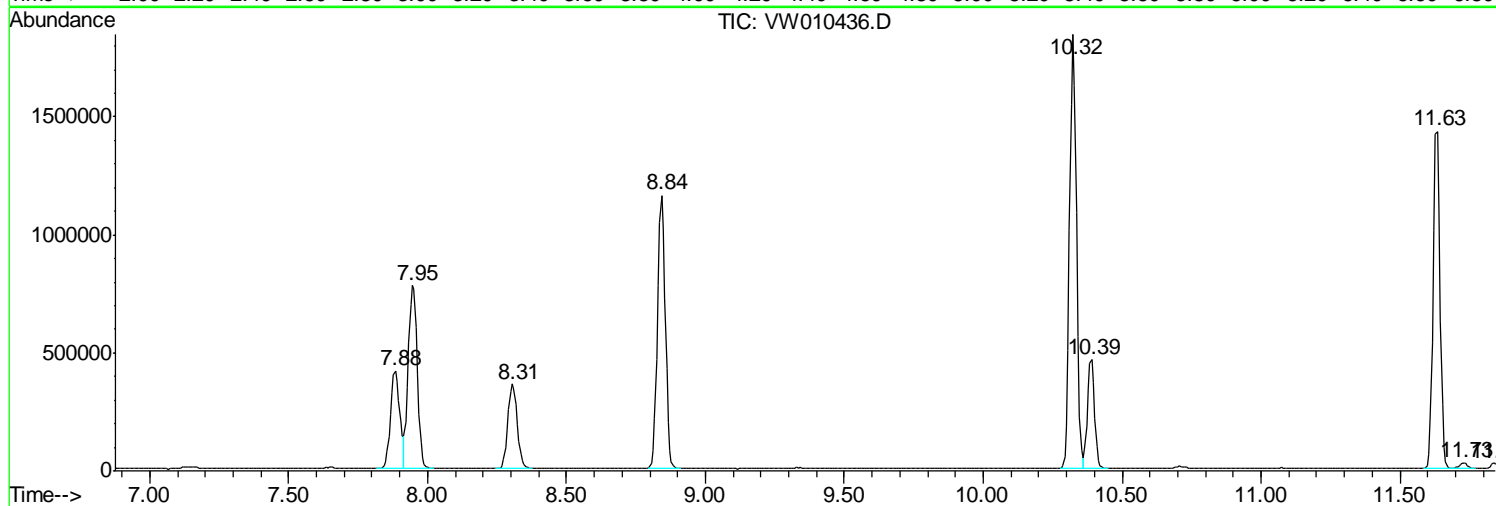
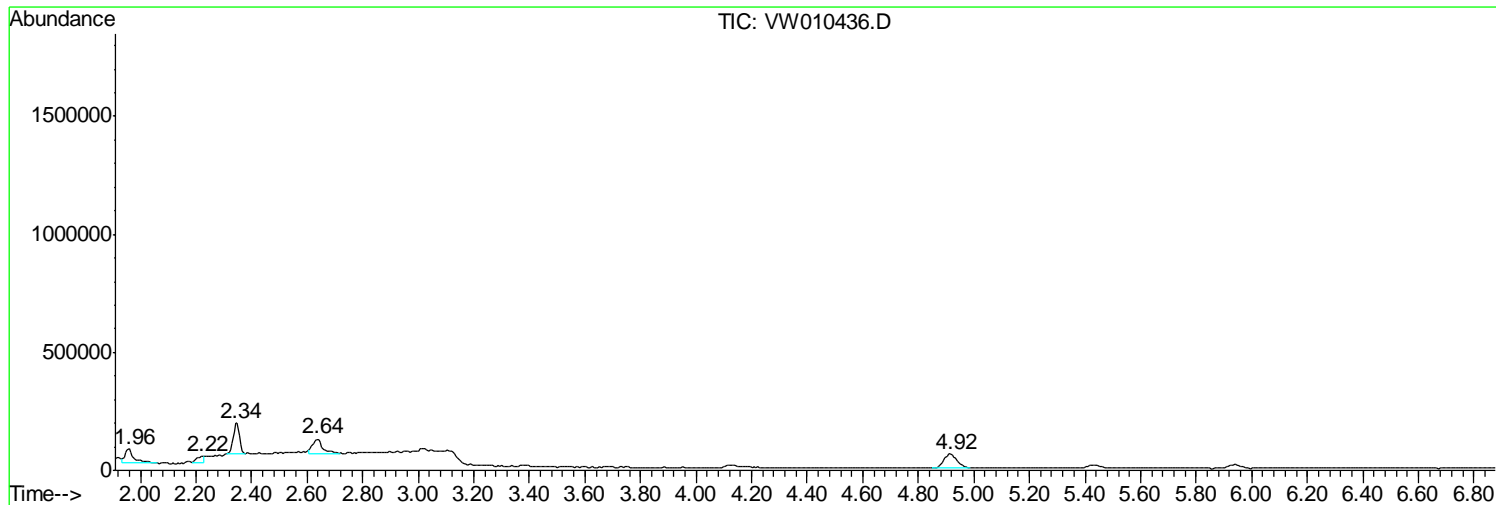
Sum of corrected areas: 17471158

Data Path : Z:\VOASRV\HPCHEM1\MSVOA W\DATA\VW051719\  
Data File : VW010436.D  
Acq On : 18 May 2019 03:40  
Operator : SY/VA  
Sample : K2906-01  
Misc : 7.13G/5ML/MSVOA W/SOIL  
ALS Vial : 27 Sample Multiplier: 1

Instrument :  
MSVOA\_W  
ClientSampleId :  
FESB-11(7-7.5)

Quant Method : Z:\VOASRV\HPCHEM1\MSVOA\_W\METHOD\82W051719S.M  
Quant Title : SW846 8260

TIC Library : C:\DATABASE\NIST11.L  
TIC Integration Parameters: LSCINT.P



Data Path : Z:\VOASRV\HPCHEM1\MSVOA W\DATA\VW051719\  
 Data File : VW010436.D  
 Acq On : 18 May 2019 03:40  
 Operator : SY/VA  
 Sample : K2906-01  
 Misc : 7.13G/5ML/MSVOA W/SOIL  
 ALS Vial : 27 Sample Multiplier: 1

Instrument :  
 MSVOA\_W  
 ClientSampled :  
 FESB-11(7-7.5)

Quant Method : Z:\VOASRV\HPCHEM1\MSVOA\_W\METHOD\82W051719S.M  
 Quant Title : SW846 8260

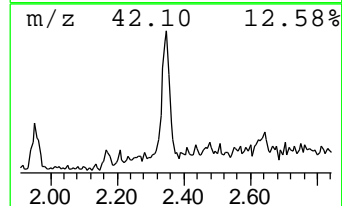
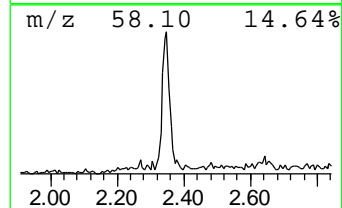
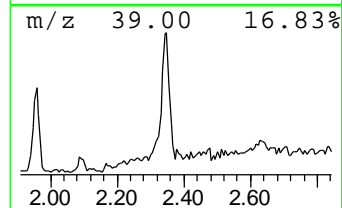
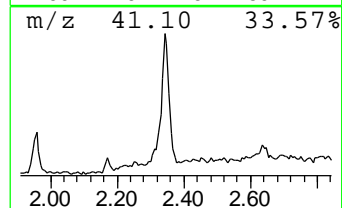
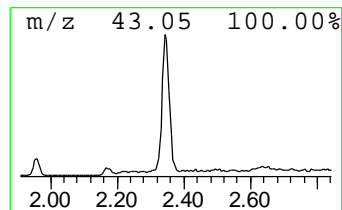
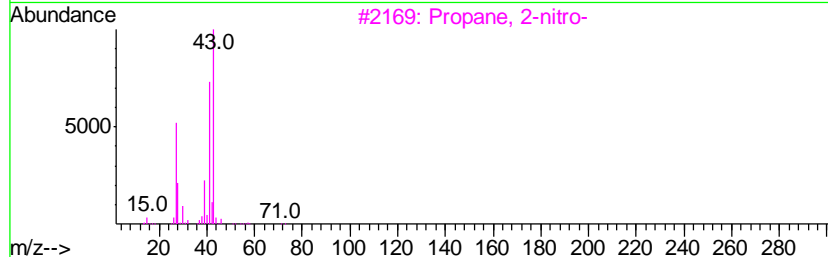
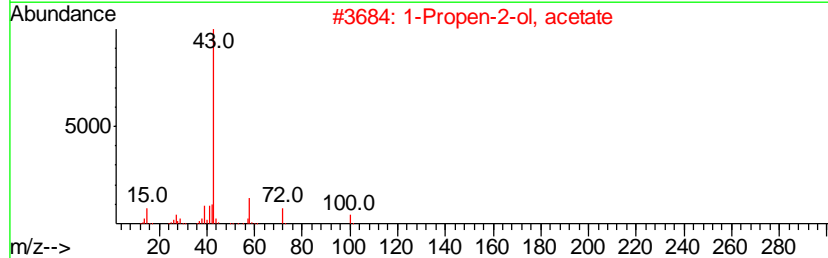
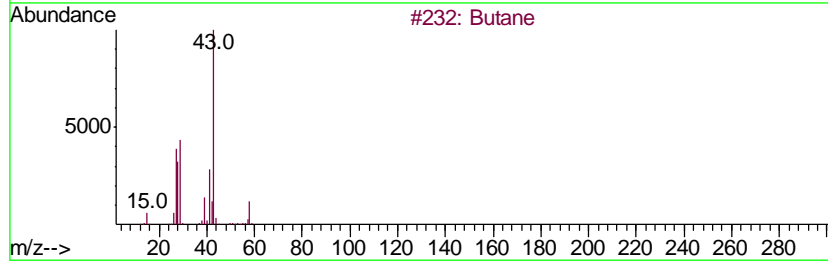
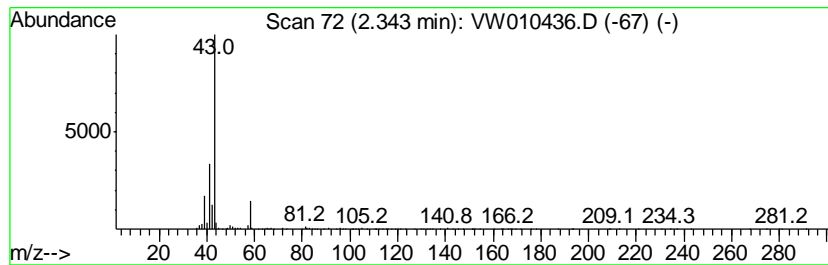
TIC Library : C:\DATABASE\NIST11.L  
 TIC Integration Parameters: LSCINT.P

\*\*\*\*\*  
 Peak Number 1 Butane Concentration Rank 1

R.T.	EstConc	Area	Relative to ISTD	R.T.
2.34	5.67 ug/l	195915	Pentafluorobenzene	7.95

Hit#	of	Tentative ID	MW	MolForm	CAS#	Qual
1	5	Butane	58	C4H10	000106-97-8	53
2		1-Propen-2-ol, acetate	100	C5H8O2	000108-22-5	42
3		Propane, 2-nitro-	89	C3H7NO2	000079-46-9	9
4		Isobutane	58	C4H10	000075-28-5	9
5		Propane, 1-bromo-	122	C3H7Br	000106-94-5	9



Data Path : Z:\VOASRV\HPCHEM1\MSVOA\_W\DATA\VW051719\  
Data File : VW010436.D  
Acq On : 18 May 2019 03:40  
Operator : SY/VA  
Sample : K2906-01  
Misc : 7.13G/5ML/MSVOA\_W/SOIL  
ALS Vial : 27 Sample Multiplier: 1

Instrument :  
MSVOA\_W  
ClientSampleId :  
FESB-11(7-7.5)

Quant Method : Z:\VOASRV\HPCHEM1\MSVOA\_W\METHOD\82W051719S.M  
Quant Title : SW846 8260

TIC Library : C:\DATABASE\NIST11.L  
TIC Integration Parameters: LSCINT.P

TIC Top Hit name	RT	EstConc	Units	Response	--Internal Standard--			
					#	RT	Resp	Conc
Butane	2.34	5.7	ug/l	195915	1	7.95	1727550	50.0