

Data Path : Z:\VOASRV\HPCHEM1\MSVOA W\DATA\VW052019\  
 Data File : VW010472.D  
 Acq On : 21 May 2019 02:48  
 Operator : SY/VA  
 Sample : K2951-09  
 Misc : 6.63G/5ML/MSVOA W/SOIL  
 ALS Vial : 30 Sample Multiplier: 1

Instrument :  
 MSVOA\_W  
 ClientSampled :  
 TP-14-S

Quant Time: May 21 06:51:29 2019  
 Quant Method : Z:\VOASRV\HPCHEM1\MSVOA\_W\METHOD\82W052019S.M  
 Quant Title : SW846 8260  
 QLast Update : Tue May 21 06:38:43 2019  
 Response via : Initial Calibration

Internal Standards	R.T.	QIon	Response	Conc	Units	Dev(Min)
1) Pentafluorobenzene	7.95	168	112805	50.00	ug/l	0.00
34) 1,4-Difluorobenzene	8.84	114	209473	50.00	ug/l	0.00
63) Chlorobenzene-d5	11.63	117	152985	50.00	ug/l	0.00
72) 1,4-Dichlorobenzene-d4	13.56	152	43071	50.00	ug/l	0.00

## System Monitoring Compounds

33) 1,2-Dichloroethane-d4	8.31	65	67030	57.57	ug/l	0.00
Spiked Amount	50.000		Recovery	=	115.14%	
35) Dibromofluoromethane	7.88	113	67601	53.19	ug/l	0.00
Spiked Amount	50.000		Recovery	=	106.38%	
50) Toluene-d8	10.32	98	251207	51.73	ug/l	0.00
Spiked Amount	50.000		Recovery	=	103.46%	
62) 4-Bromofluorobenzene	12.62	95	65385	33.81	ug/l	0.00
Spiked Amount	50.000		Recovery	=	67.62%	

## Target Compounds

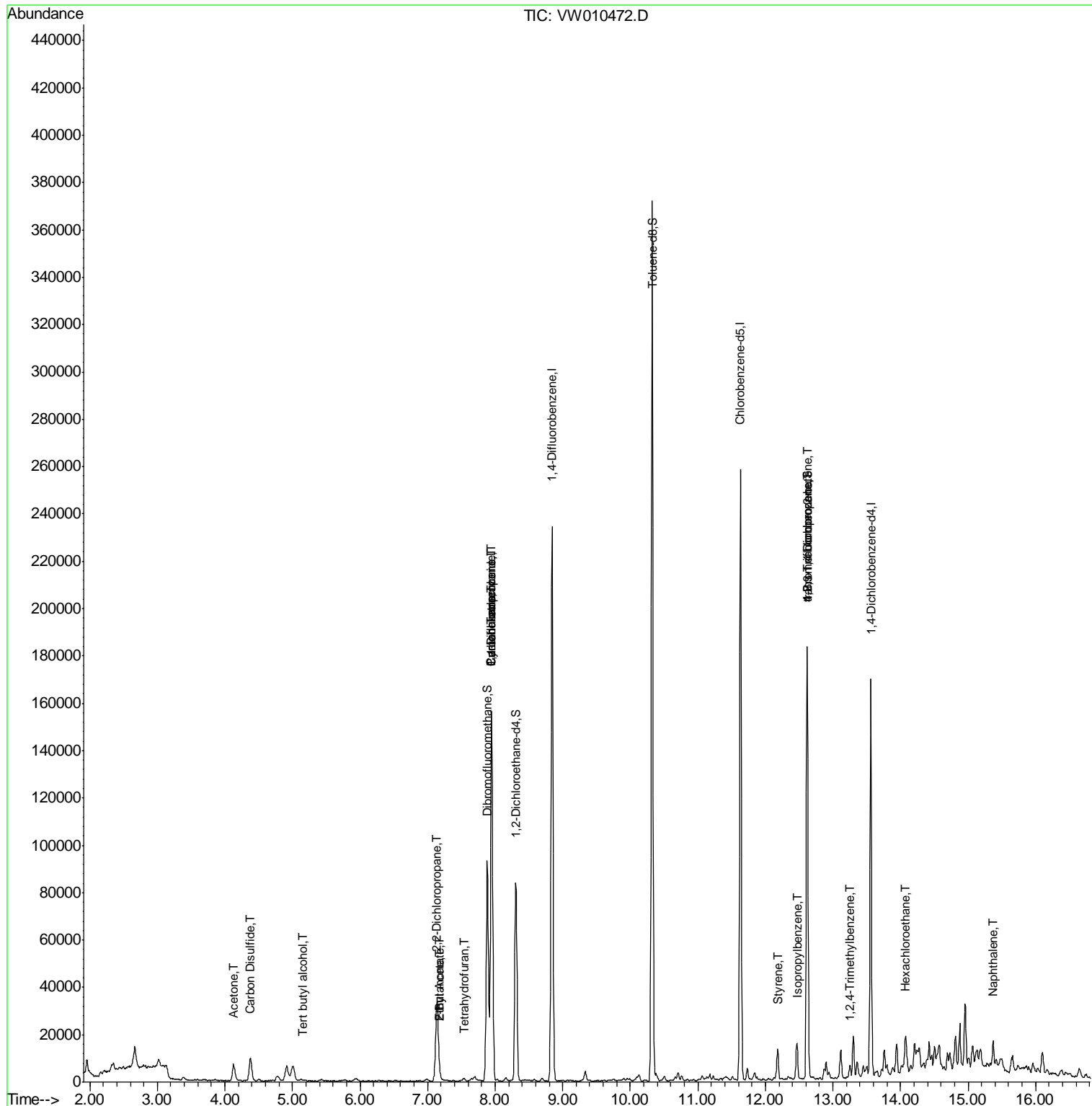
					Qvalue	
2) Dichlorodifluoromethane	2.00	85	92	Below Cal	#	42
11) Tert butyl alcohol	5.17	59	309	2.950	ug/l #	71
13) Acrolein	3.72	56	21	Below Cal	#	1
16) Acetone	4.13	43	13073	55.005	ug/l	95
17) Carbon Disulfide	4.38	76	19964	5.617	ug/l	96
20) Methylene Chloride	4.92	84	4980	Below Cal	#	91
25) 2-Butanone	7.18	43	4127	12.134	ug/l	93
26) 2,2-Dichloropropane	7.14	77	2448	1.218	ug/l #	52
29) Tetrahydrofuran	7.54	42	715	3.107	ug/l #	63
31) Cyclohexane	7.95	56	3268	1.478	ug/l #	22
36) 1,1-Dichloropropene	7.95	75	8982	4.603	ug/l #	47
37) Ethyl Acetate	7.18	43	4127	4.973	ug/l #	67
38) Carbon Tetrachloride	7.95	117	12085	5.741	ug/l #	16
70) Styrene	12.18	104	5974	1.646	ug/l	93
73) Isopropylbenzene	12.47	105	10459	3.060	ug/l	98
76) 1,2,3-Trichloropropane	12.62	75	31161	71.274	ug/l #	1
81) trans-1,4-Dichloro-2-buten	12.62	75	31161	148.751	ug/l #	14
84) 1,2,4-Trimethylbenzene	13.26	105	3231	1.121	ug/l	98
90) Hexachloroethane	14.07	117	3223	5.199	ug/l #	15
95) Naphthalene	15.37	128	10505	5.380	ug/l	97

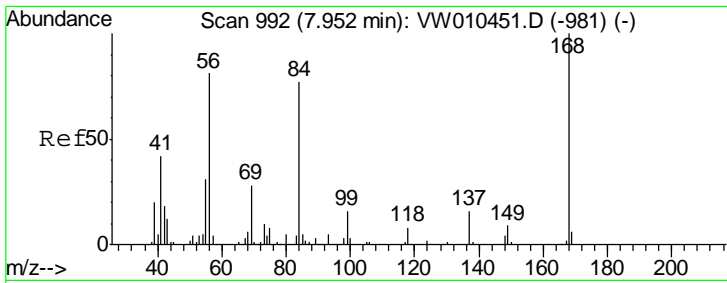
(#) = qualifier out of range (m) = manual integration (+) = signals summed

Data Path : Z:\VOASRV\HPCHEM1\MSVOA W\DATA\VW052019\  
 Data File : VW010472.D  
 Acq On : 21 May 2019 02:48  
 Operator : SY/VA  
 Sample : K2951-09  
 Misc : 6.63G/5ML/MSVOA W/SOIL  
 ALS Vial : 30 Sample Multiplier: 1

Instrument :  
 MSVOA\_W  
 Client Sampled :  
 TP-14-S

Quant Time: May 21 06:51:29 2019  
 Quant Method : Z:\VOASRV\HPCHEM1\MSVOA\_W\METHOD\82W052019S.M  
 Quant Title : SW846 8260  
 QLast Update : Tue May 21 06:38:43 2019  
 Response via : Initial Calibration

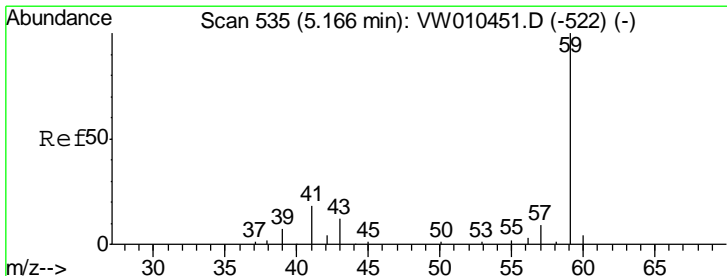
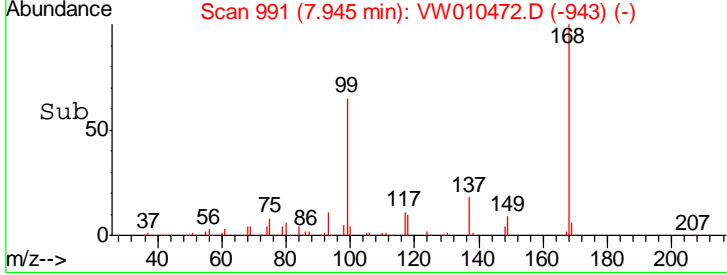
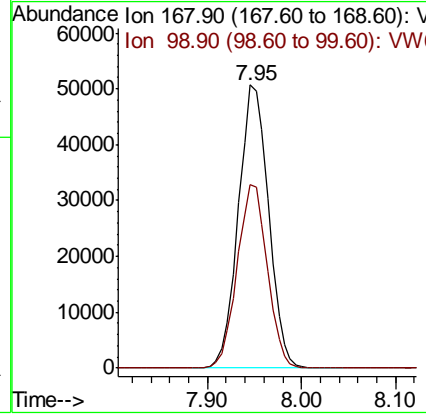
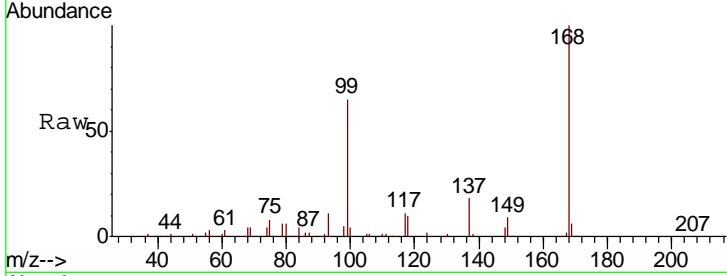




#1  
 Pentafluorobenzene  
 Concen: 50.000 ug/l  
 RT: 7.95 min Scan# 991  
 Delta R.T. -0.01 min  
 Lab File: VW010472.D  
 Acq: 21 May 2019 02:48

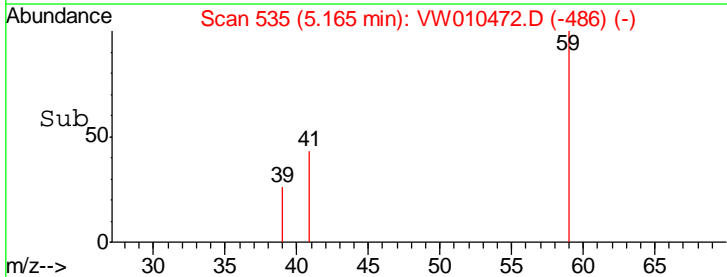
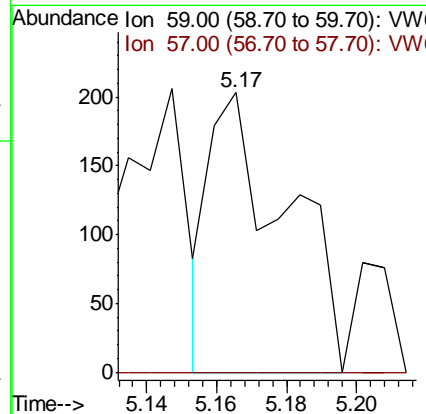
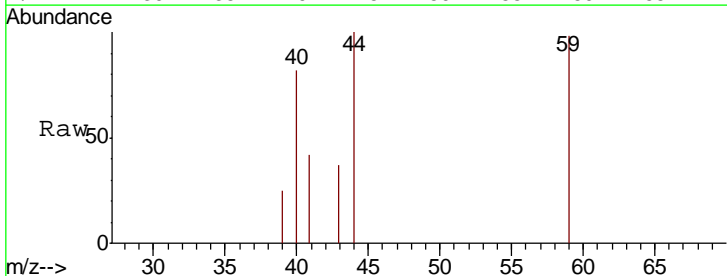
Instrument : MSVOA\_W  
 ClientSampled : TP-14-S

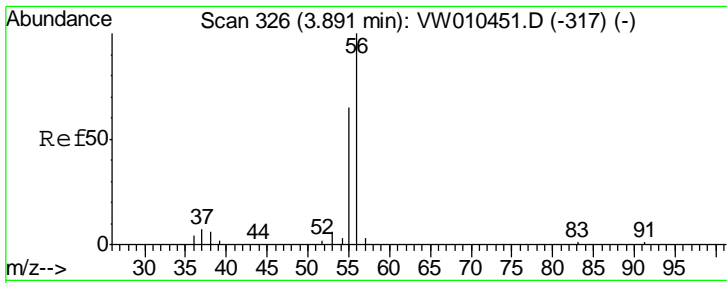
Tgt Ion	Resp	Lower	Upper
168	112805		
168	100		
99	64.7	46.1	69.1



#11  
 Tert butyl alcohol  
 Concen: 2.950 ug/l  
 RT: 5.17 min Scan# 535  
 Delta R.T. -0.00 min  
 Lab File: VW010472.D  
 Acq: 21 May 2019 02:48

Tgt Ion	Resp	Lower	Upper
59	309		
59	100		
57	0.0	8.8	13.2#

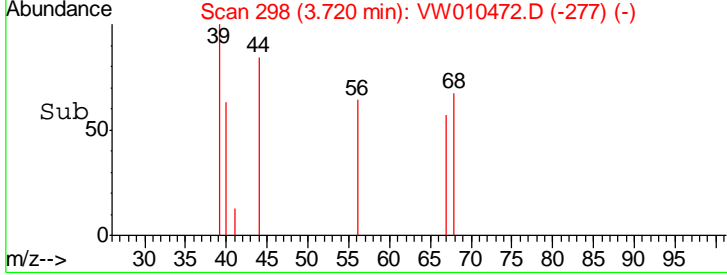
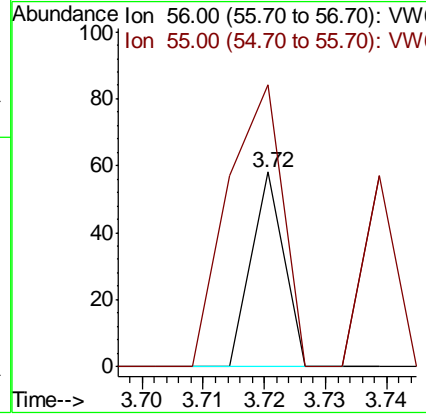
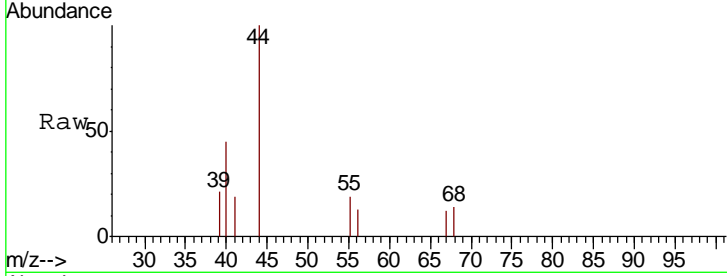




#13  
 Acrolein  
 Concen: Below Cal  
 RT: 3.72 min Scan# 298  
 Delta R.T. -0.17 min  
 Lab File: VW010472.D  
 Acq: 21 May 2019 02:48

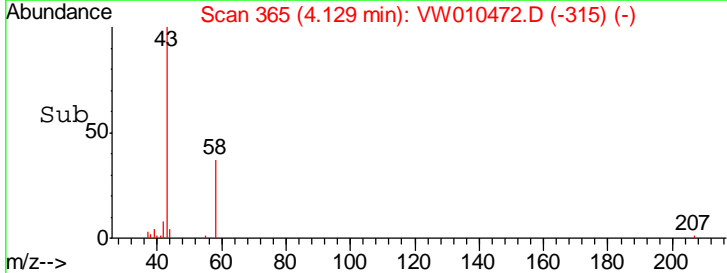
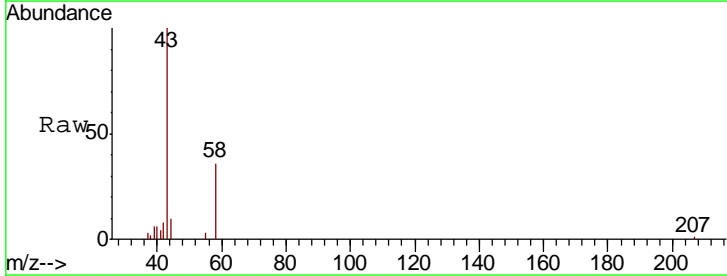
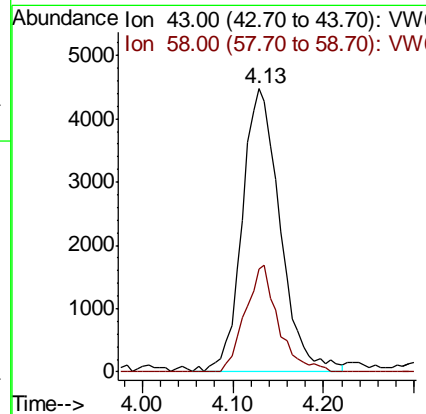
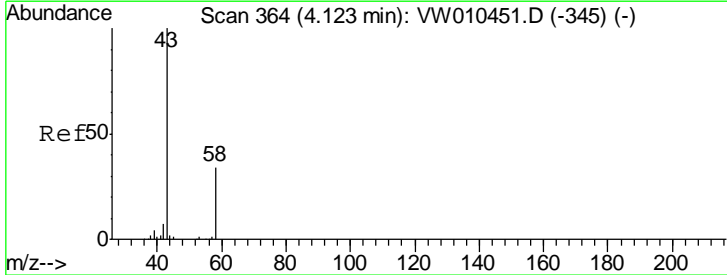
Instrument : MSVOA\_W  
 ClientSampleID : TP-14-S

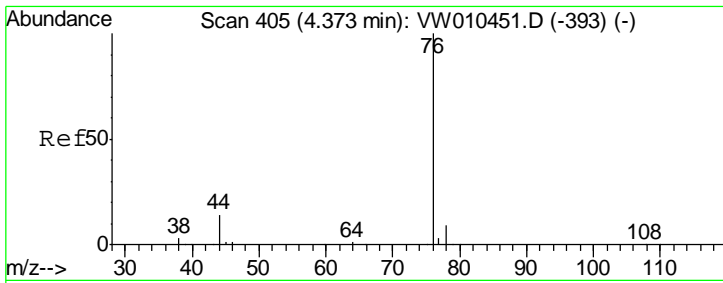
Tgt Ion	Resp	Lower	Upper
56	100		
55	247.6	57.9	86.9#



#16  
 Acetone  
 Concen: 55.005 ug/l  
 RT: 4.13 min Scan# 365  
 Delta R.T. 0.01 min  
 Lab File: VW010472.D  
 Acq: 21 May 2019 02:48

Tgt Ion	Resp	Lower	Upper
43	100		
58	36.4	27.0	40.4

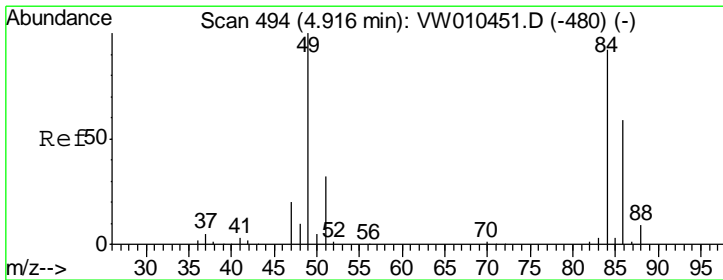
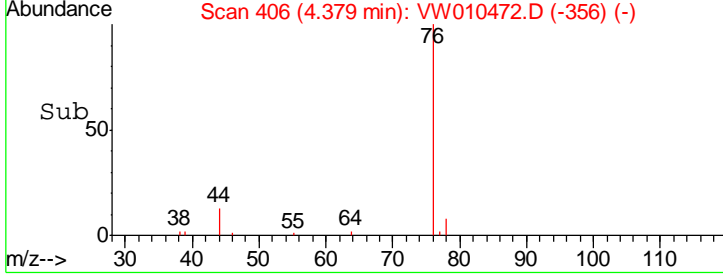
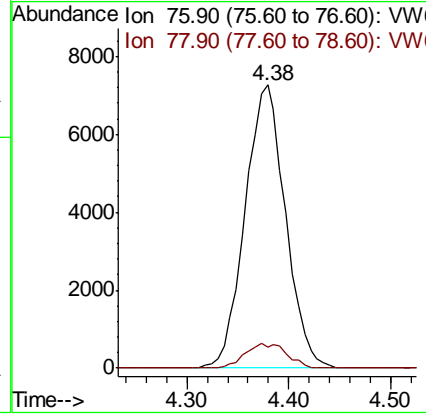
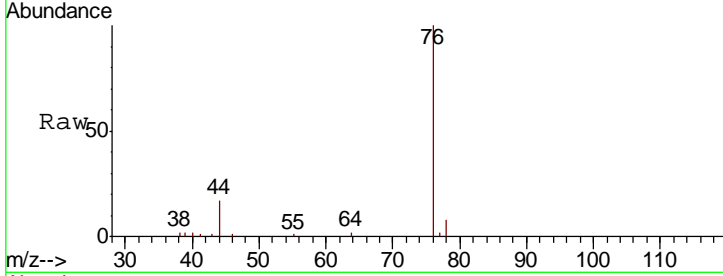




#17  
 Carbon Disulfide  
 Concen: 5.617 ug/l  
 RT: 4.38 min Scan# 406  
 Delta R.T. 0.01 min  
 Lab File: VW010472.D  
 Acq: 21 May 2019 02:48

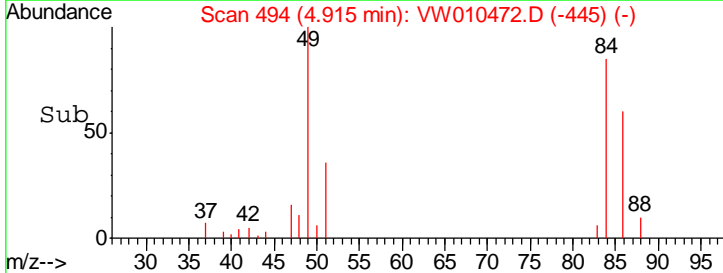
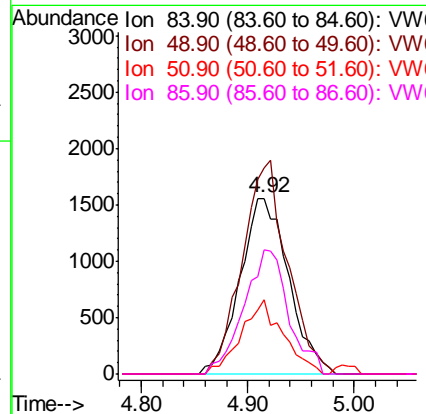
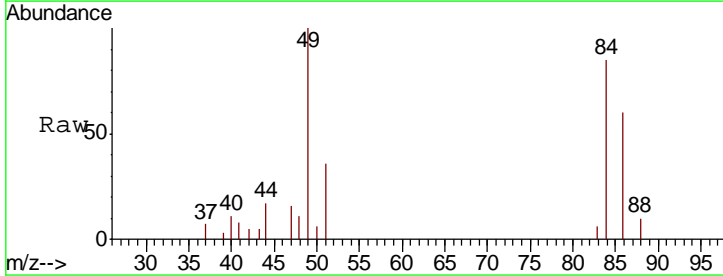
Instrument : MSVOA\_W  
 ClientSampled : TP-14-S

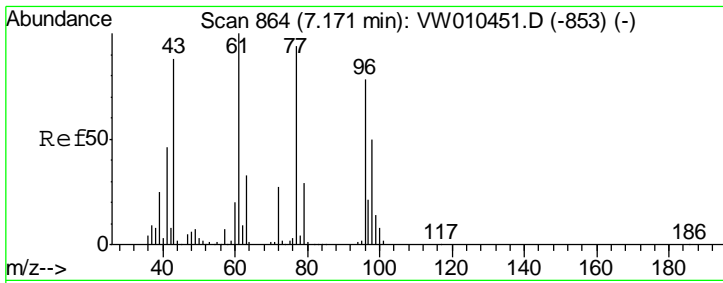
Tgt Ion	Resp	Lower	Upper
76	19964		
78	7.6	7.1	10.7



#20  
 Methylene Chloride  
 Concen: Below Cal  
 RT: 4.92 min Scan# 494  
 Delta R.T. 0.00 min  
 Lab File: VW010472.D  
 Acq: 21 May 2019 02:48

Tgt Ion	Resp	Lower	Upper
84	4980		
49	117.2	87.2	130.8
51	42.5	27.7	41.5#
86	70.9	51.4	77.0

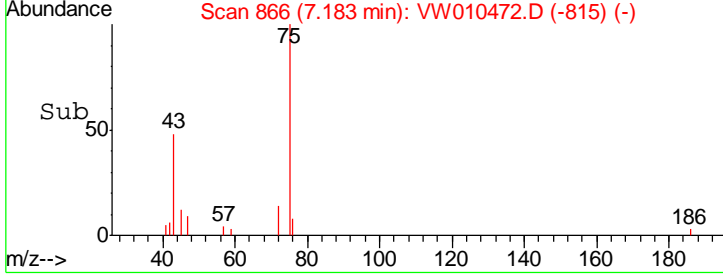
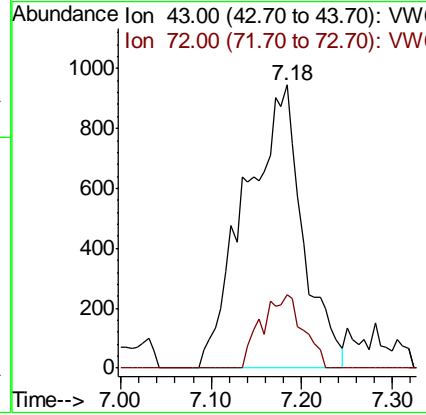
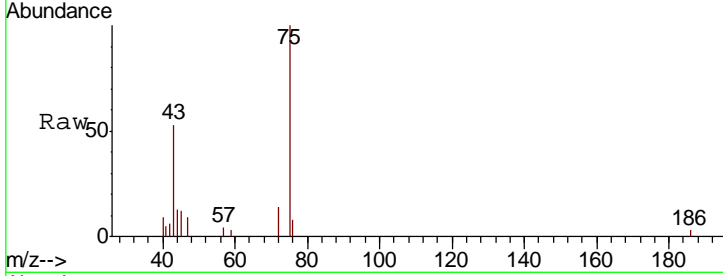




#25  
 2-Butanone  
 Concen: 12.134 ug/l  
 RT: 7.18 min Scan# 866  
 Delta R.T. 0.01 min  
 Lab File: VW010472.D  
 Acq: 21 May 2019 02:48

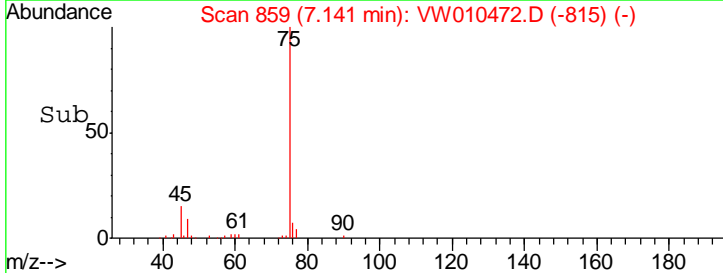
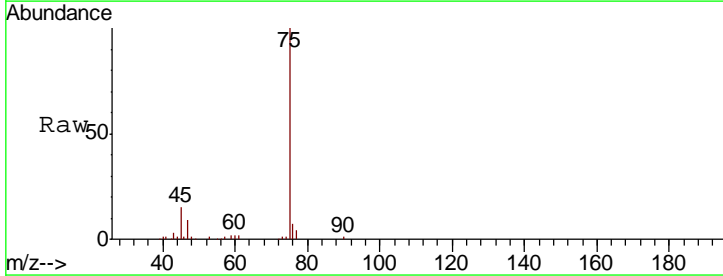
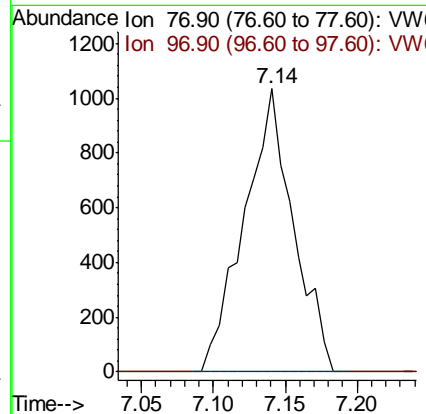
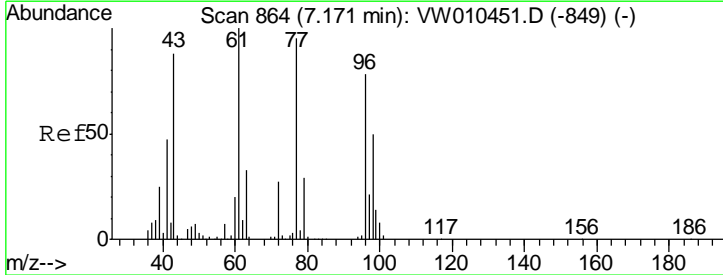
**Instrument :**  
 MSVOA\_W  
**ClientSampled :**  
 TP-14-S

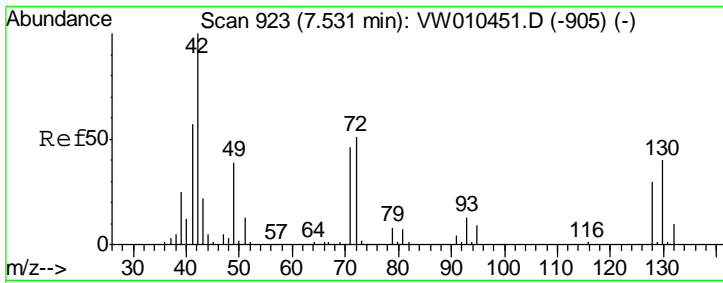
Tgt Ion	Resp	Lower	Upper
43	100		
72	26.0	24.1	36.1



#26  
 2,2-Dichloropropane  
 Concen: 1.218 ug/l  
 RT: 7.14 min Scan# 859  
 Delta R.T. -0.03 min  
 Lab File: VW010472.D  
 Acq: 21 May 2019 02:48

Tgt Ion	Resp	Lower	Upper
77	100		
97	0.0	11.7	35.0#

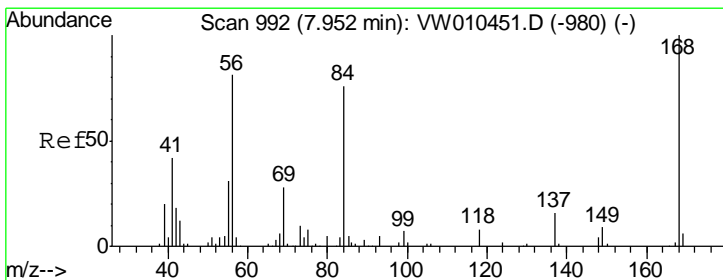
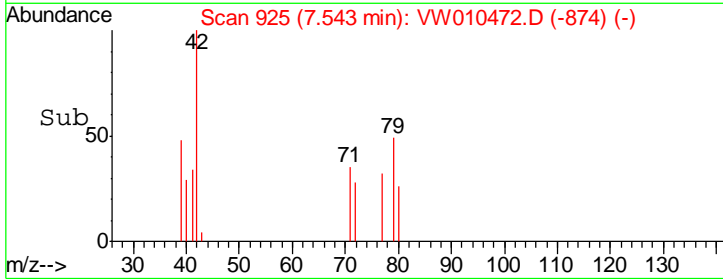
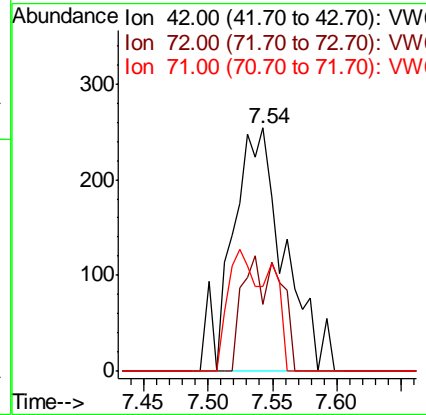
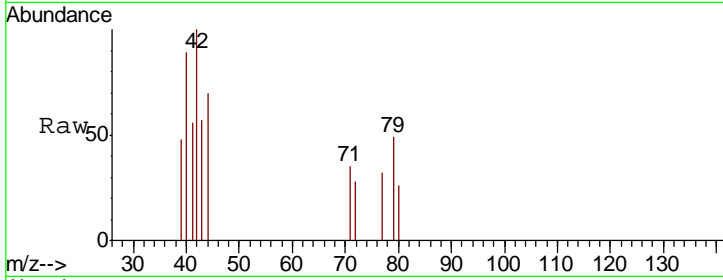




#29  
 Tetrahydrofuran  
 Concen: 3.107 ug/l  
 RT: 7.54 min Scan# 925  
 Delta R.T. 0.01 min  
 Lab File: VW010472.D  
 Acq: 21 May 2019 02:48

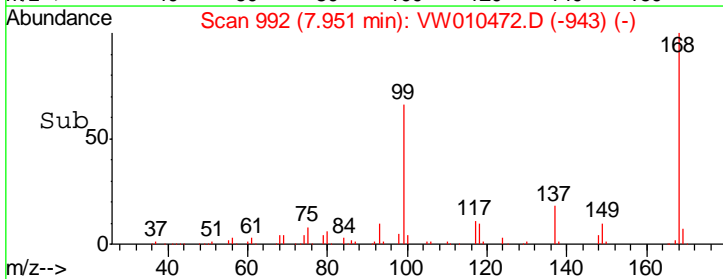
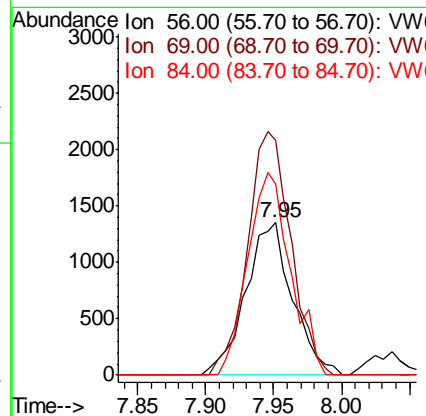
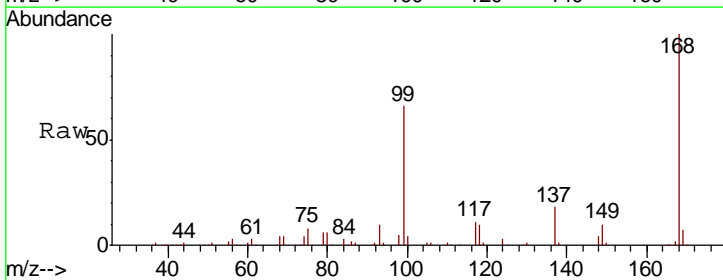
Instrument :  
 MSVOA\_W  
 ClientSampled :  
 TP-14-S

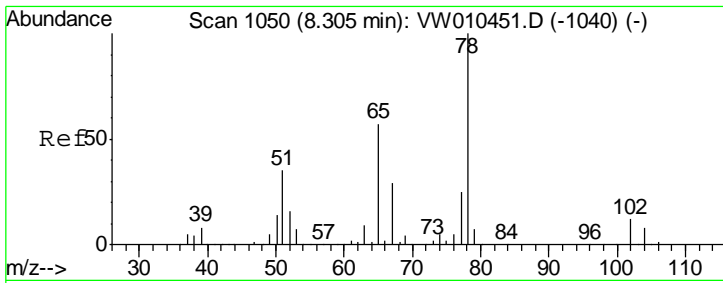
Tgt Ion	Resp	Lower	Upper
42	100		
72	19.3	38.5	57.7#
71	25.5	36.5	54.7#



#31  
 Cyclohexane  
 Concen: 1.478 ug/l  
 RT: 7.95 min Scan# 992  
 Delta R.T. -0.00 min  
 Lab File: VW010472.D  
 Acq: 21 May 2019 02:48

Tgt Ion	Resp	Lower	Upper
56	100		
69	153.8	28.2	42.2#
84	125.7	75.8	113.8#

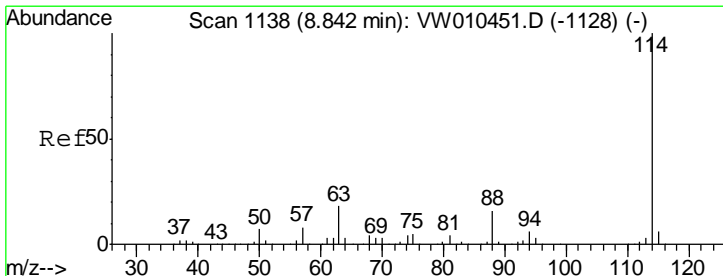
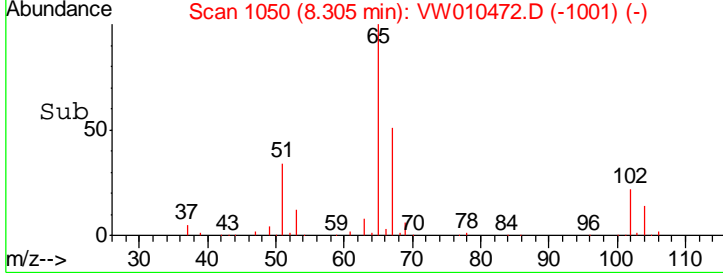
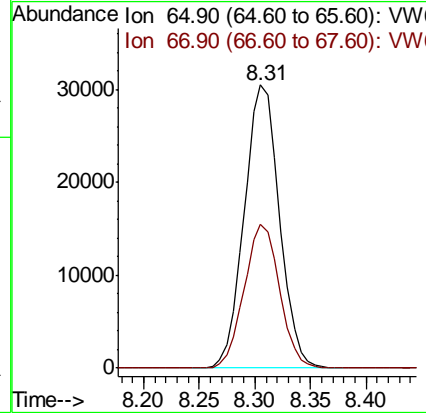
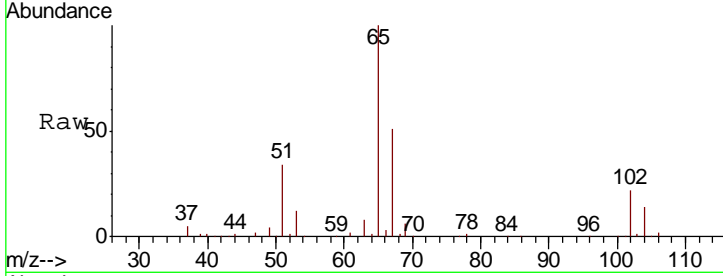




#33  
 1,2-Dichloroethane-d4  
 Concen: 57.569 ug/l  
 RT: 8.31 min Scan# 1050  
 Delta R.T. -0.00 min  
 Lab File: VW010472.D  
 Acq: 21 May 2019 02:48

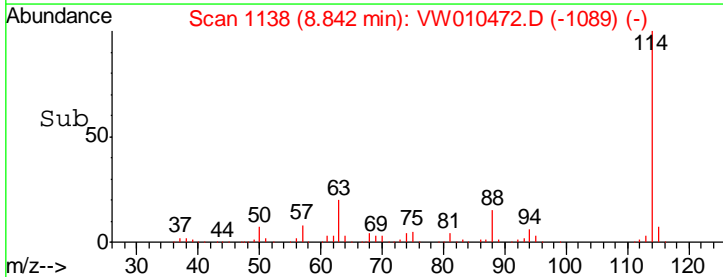
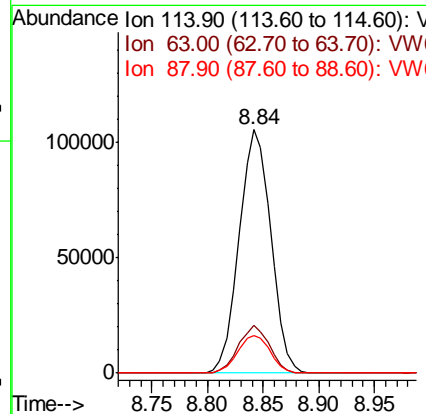
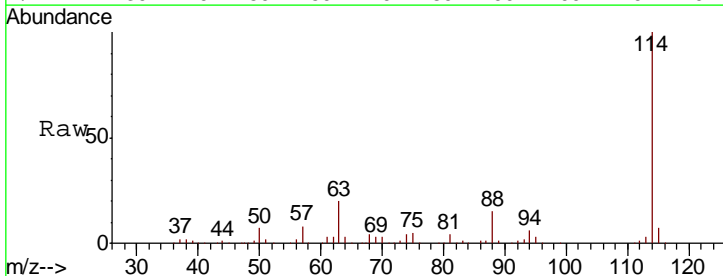
Instrument :  
 MSVOA\_W  
 ClientSampled :  
 TP-14-S

Tgt Ion	Resp	Lower	Upper
65	100		
67	51.2	0.0	103.6

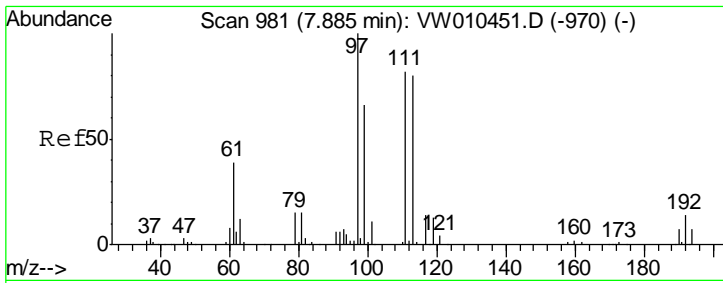


#34  
 1,4-Difluorobenzene  
 Concen: 50.000 ug/l  
 RT: 8.84 min Scan# 1138  
 Delta R.T. -0.00 min  
 Lab File: VW010472.D  
 Acq: 21 May 2019 02:48

Tgt Ion	Resp	Lower	Upper
114	100		
63	19.6	0.0	36.0
88	15.4	0.0	32.0



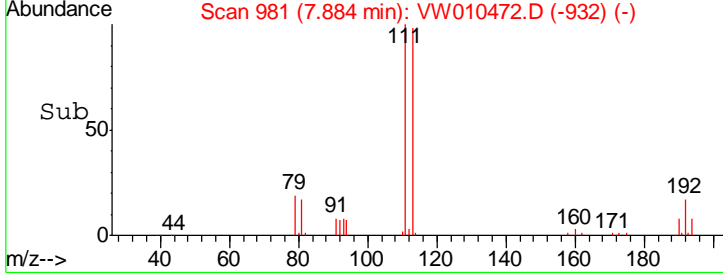
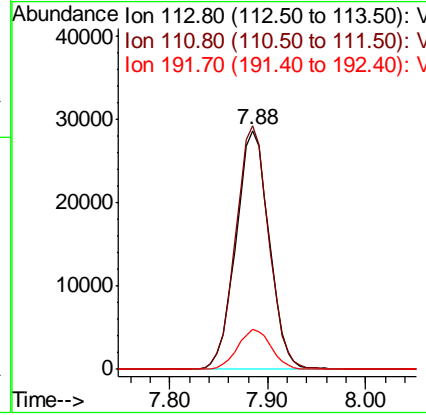
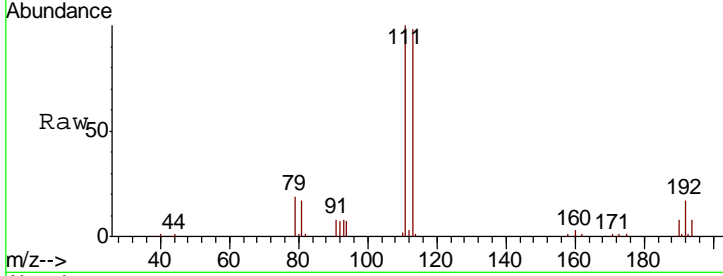




#35  
 Dibromofluoromethane  
 Concen: 53.186 ug/l  
 RT: 7.88 min Scan# 981  
 Delta R.T. -0.00 min  
 Lab File: VW010472.D  
 Acq: 21 May 2019 02:48

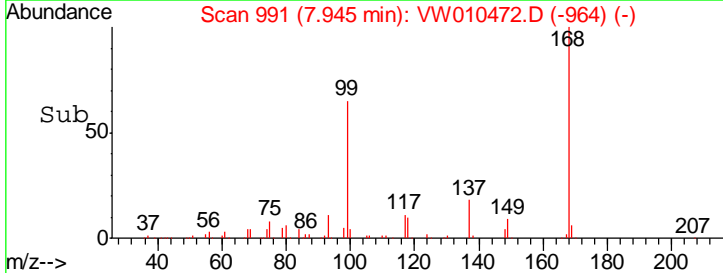
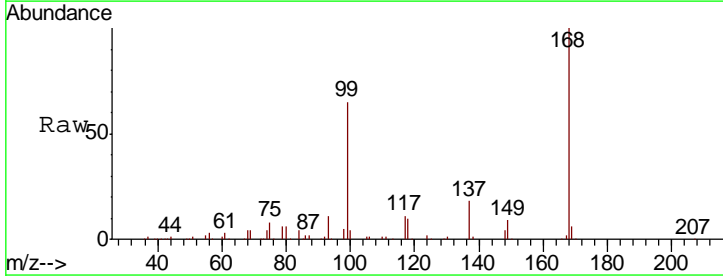
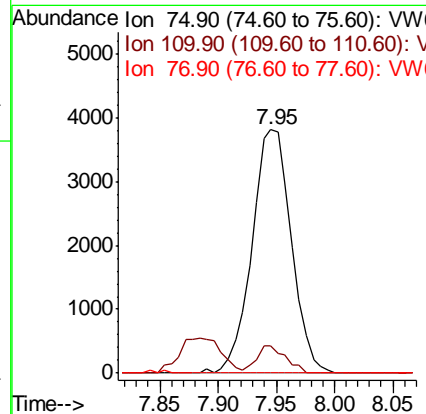
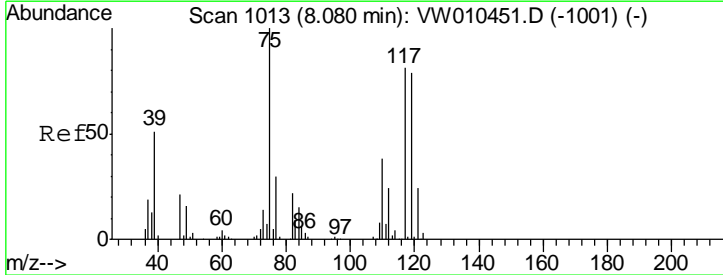
**Instrument :**  
 MSVOA\_W  
**ClientSampled :**  
 TP-14-S

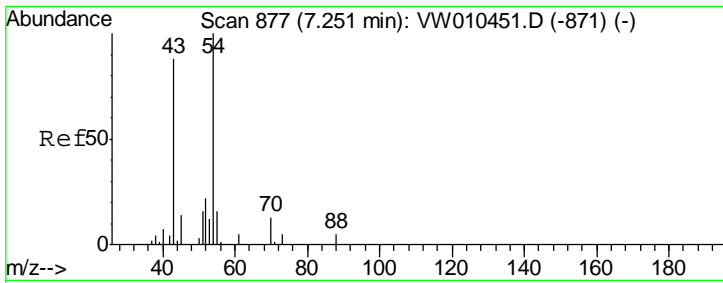
Tgt Ion	Resp	Lower	Upper
113	67601		
113	100		
111	101.7	82.2	123.4
192	16.9	14.3	21.5



#36  
 1,1-Dichloropropene  
 Concen: 4.603 ug/l  
 RT: 7.95 min Scan# 991  
 Delta R.T. -0.13 min  
 Lab File: VW010472.D  
 Acq: 21 May 2019 02:48

Tgt Ion	Resp	Lower	Upper
75	8982		
75	100		
110	8.3	19.2	57.6#
77	0.0	25.2	37.8#

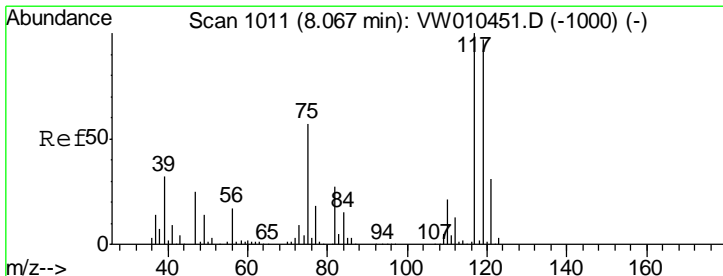
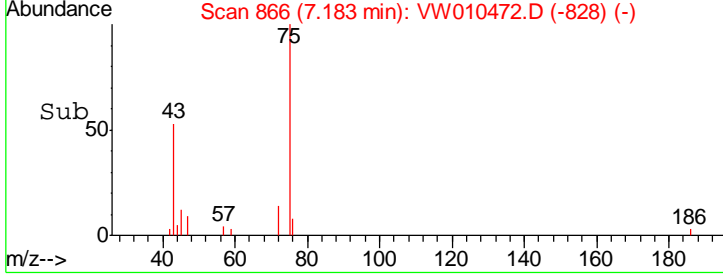
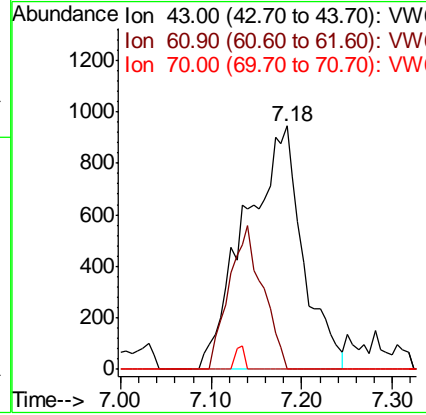
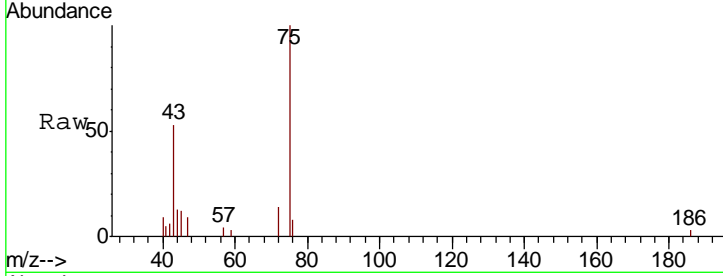




#37  
 Ethyl Acetate  
 Concen: 4.973 ug/l  
 RT: 7.18 min Scan# 866  
 Delta R.T. -0.07 min  
 Lab File: VW010472.D  
 Acq: 21 May 2019 02:48

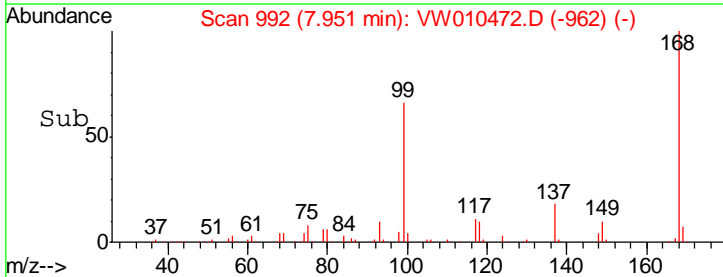
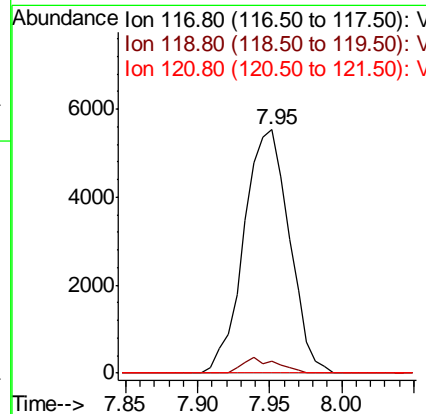
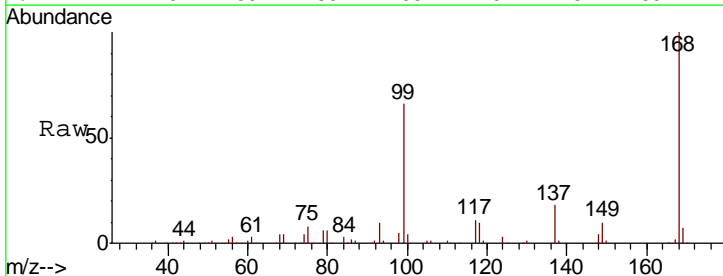
Instrument :  
 MSVOA\_W  
 ClientSampled :  
 TP-14-S

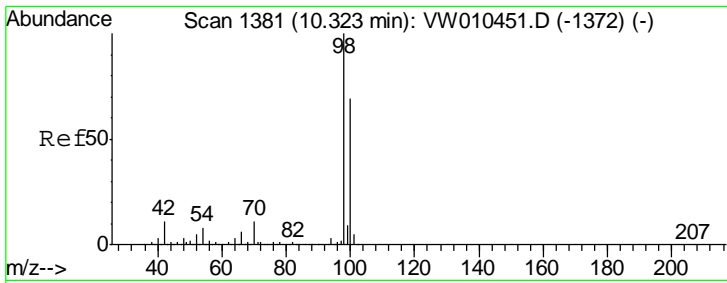
Tgt Ion	Resp	Lower	Upper
43	100		
61	0.0	11.2	16.8#
70	0.0	9.9	14.9#



#38  
 Carbon Tetrachloride  
 Concen: 5.741 ug/l  
 RT: 7.95 min Scan# 992  
 Delta R.T. -0.12 min  
 Lab File: VW010472.D  
 Acq: 21 May 2019 02:48

Tgt Ion	Resp	Lower	Upper
117	100		
119	5.1	77.4	116.0#
121	0.0	25.0	37.6#

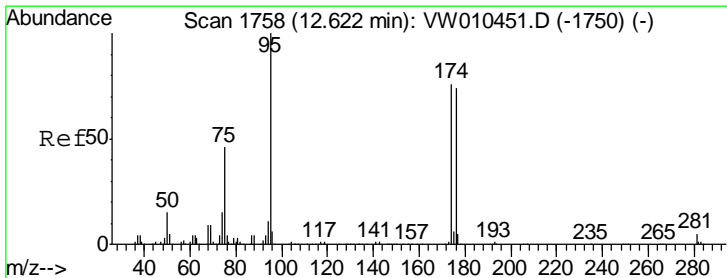
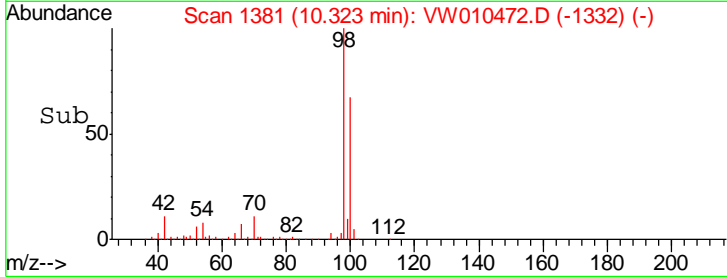
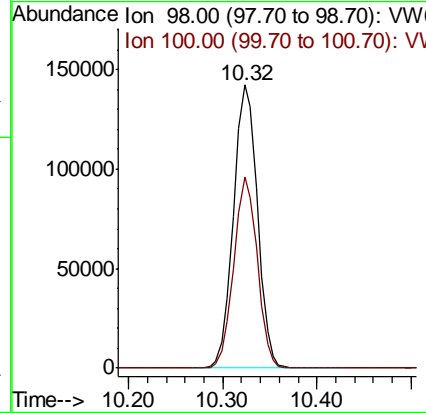
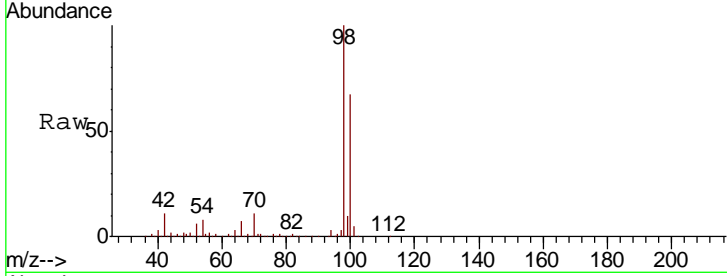




#50  
 Toluene-d8  
 Concen: 51.735 ug/l  
 RT: 10.32 min Scan# 1381  
 Delta R.T. -0.00 min  
 Lab File: VW010472.D  
 Acq: 21 May 2019 02:48

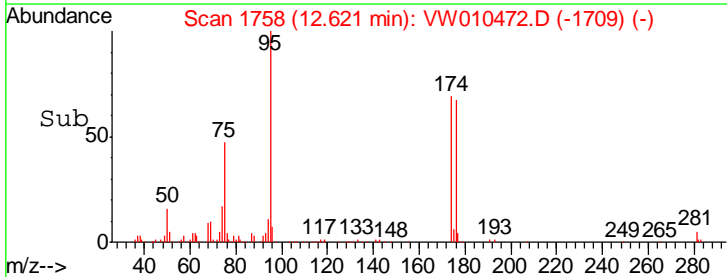
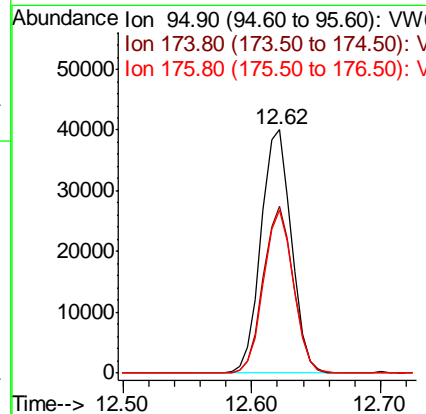
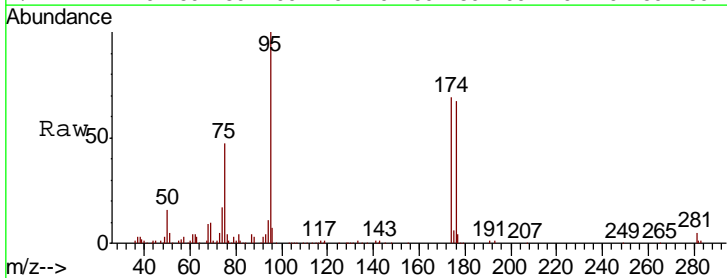
Instrument :  
 MSVOA\_W  
 ClientSampled :  
 TP-14-S

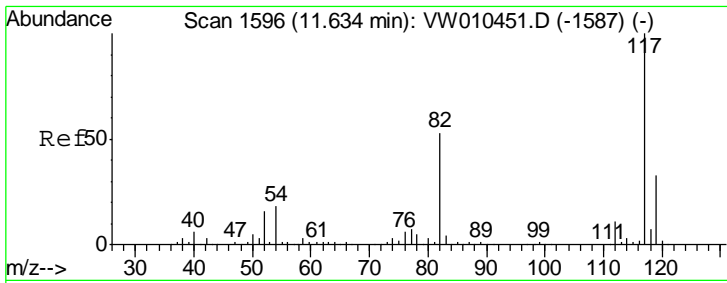
Tgt Ion: 98 Resp: 251207  
 Ion Ratio Lower Upper  
 98 100  
 100 66.2 53.7 80.5



#62  
 4-Bromofluorobenzene  
 Concen: 33.807 ug/l  
 RT: 12.62 min Scan# 1758  
 Delta R.T. -0.00 min  
 Lab File: VW010472.D  
 Acq: 21 May 2019 02:48

Tgt Ion: 95 Resp: 65385  
 Ion Ratio Lower Upper  
 95 100  
 174 67.4 0.0 148.6  
 176 65.4 0.0 144.2

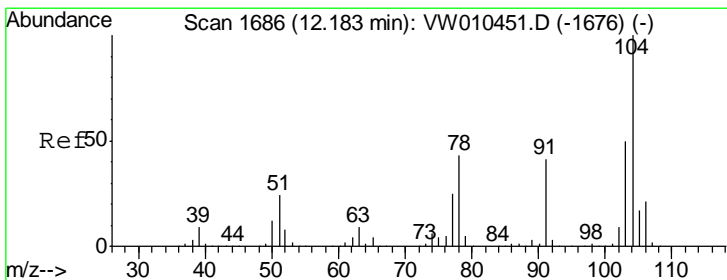
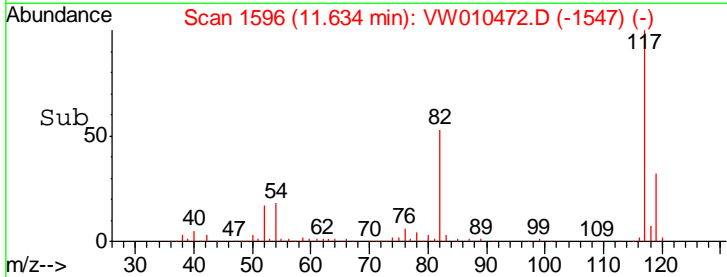
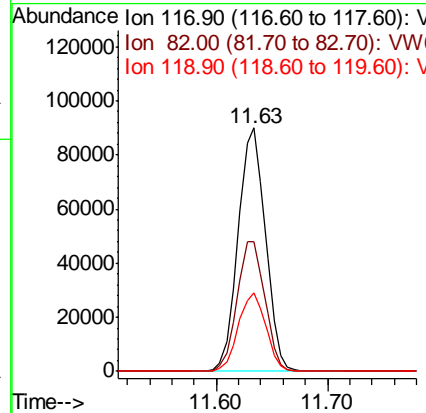
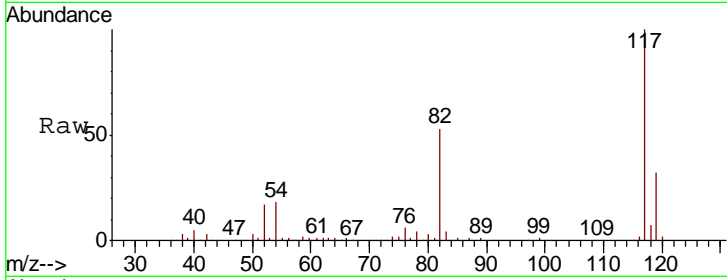




#63  
 Chlorobenzene-d5  
 Concen: 50.000 ug/l  
 RT: 11.63 min Scan# 1596  
 Delta R.T. -0.00 min  
 Lab File: VW010472.D  
 Acq: 21 May 2019 02:48

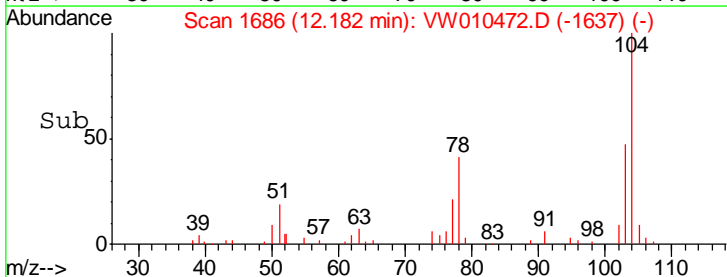
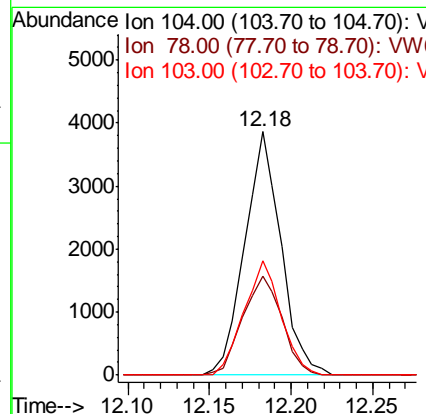
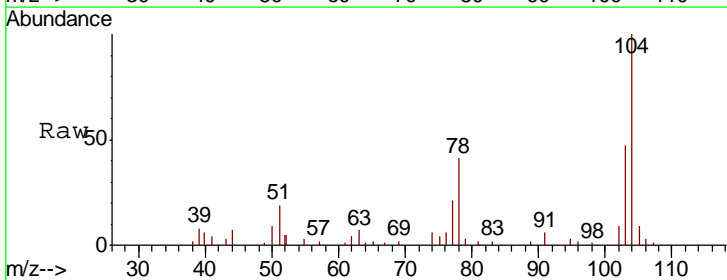
Instrument :  
 MSVOA\_W  
 ClientSampled :  
 TP-14-S

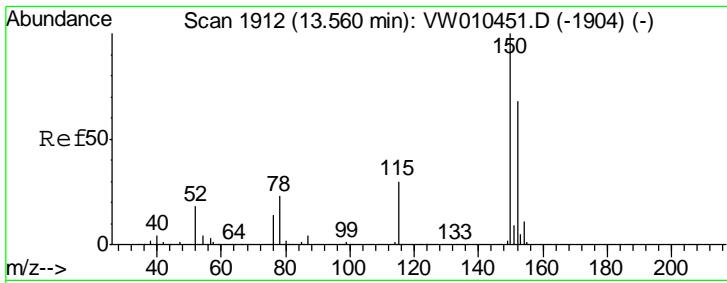
Tgt Ion	Resp	Lower	Upper
117	152985		
82	53.3	42.8	64.2
119	32.0	26.3	39.5



#70  
 Styrene  
 Concen: 1.646 ug/l  
 RT: 12.18 min Scan# 1686  
 Delta R.T. -0.00 min  
 Lab File: VW010472.D  
 Acq: 21 May 2019 02:48

Tgt Ion	Resp	Lower	Upper
104	5974		
78	44.2	39.0	58.4
103	48.2	43.0	64.6

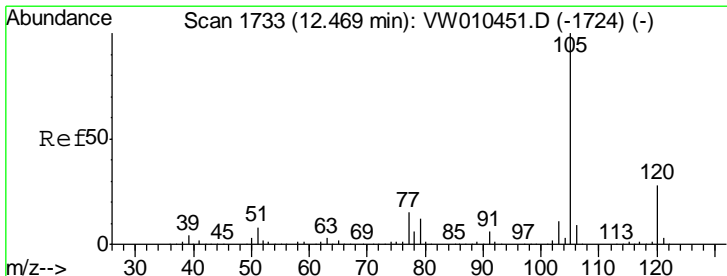
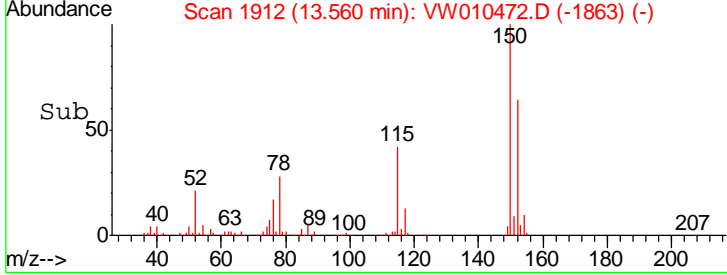
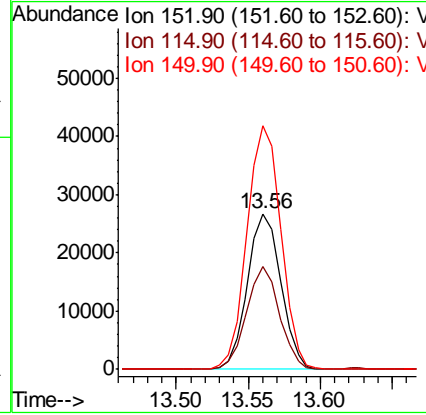
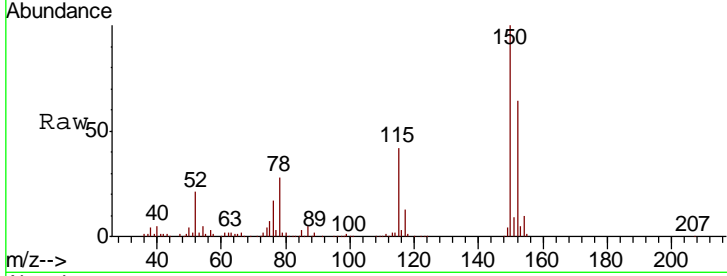




#72  
 1,4-Dichlorobenzene-d4  
 Concen: 50.000 ug/l  
 RT: 13.56 min Scan# 1912  
 Delta R.T. -0.00 min  
 Lab File: VW010472.D  
 Acq: 21 May 2019 02:48

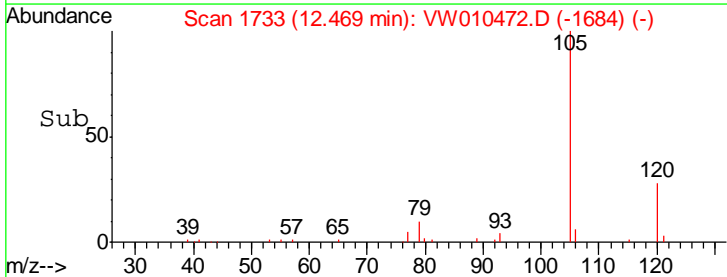
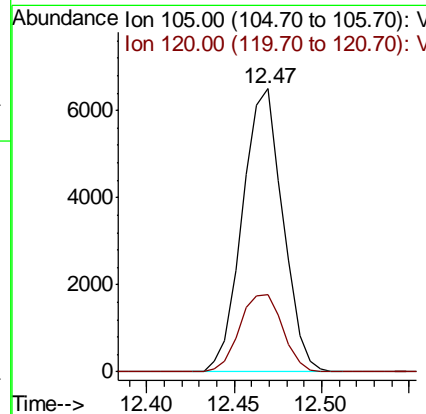
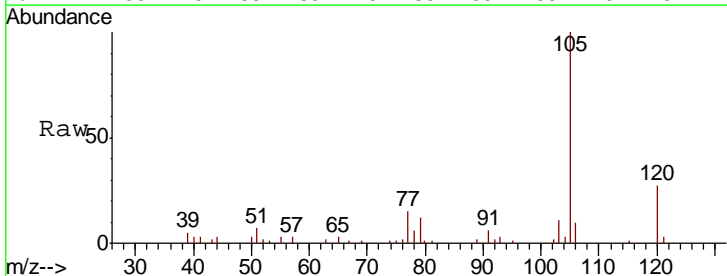
Instrument :  
 MSVOA\_W  
 ClientSampled :  
 TP-14-S

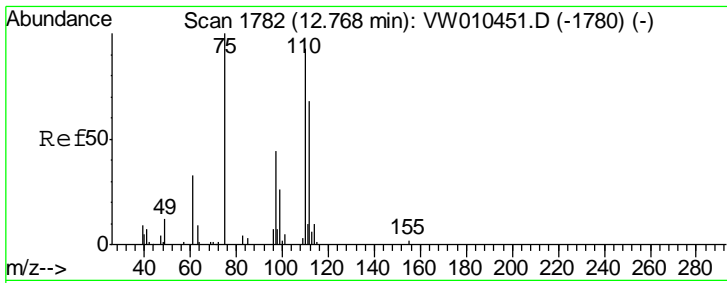
Tgt Ion	Resp	Lower	Upper
152	100		
115	63.9	30.3	91.0
150	158.1	0.0	349.8



#73  
 Isopropylbenzene  
 Concen: 3.060 ug/l  
 RT: 12.47 min Scan# 1733  
 Delta R.T. -0.00 min  
 Lab File: VW010472.D  
 Acq: 21 May 2019 02:48

Tgt Ion	Resp	Lower	Upper
105	100		
120	29.0	13.9	41.7

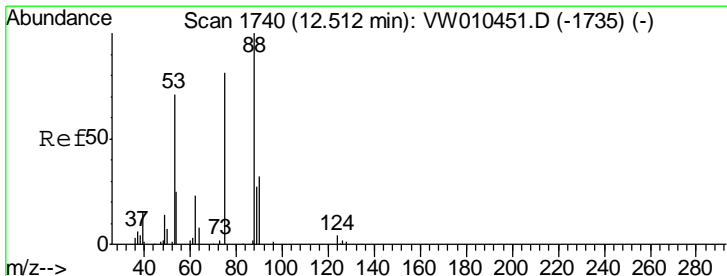
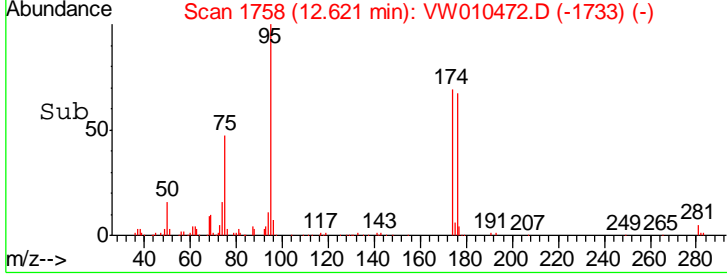
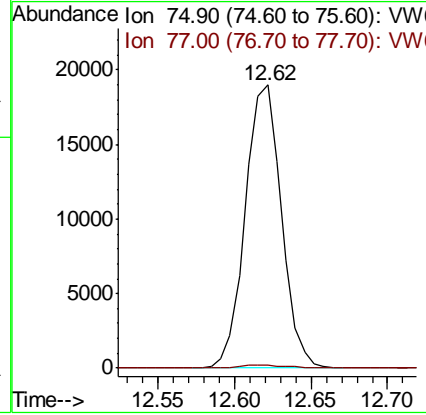
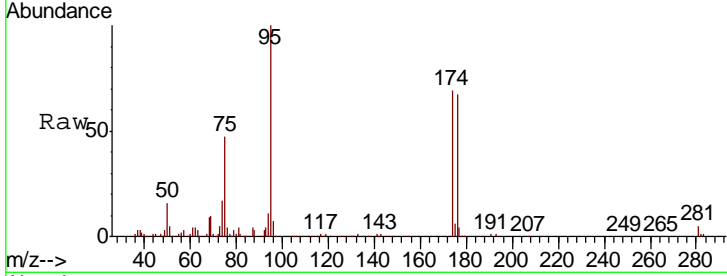




#76  
 1,2,3-Trichloropropane  
 Concen: 71.274 ug/l  
 RT: 12.62 min Scan# 1758  
 Delta R.T. -0.15 min  
 Lab File: VW010472.D  
 Acq: 21 May 2019 02:48

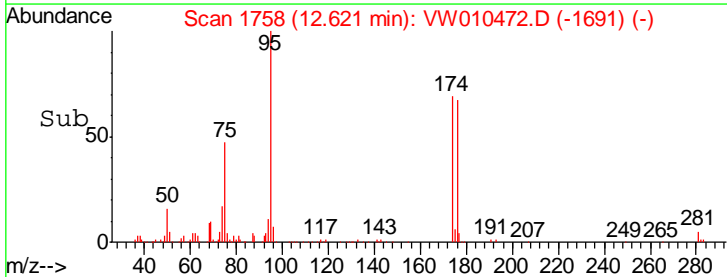
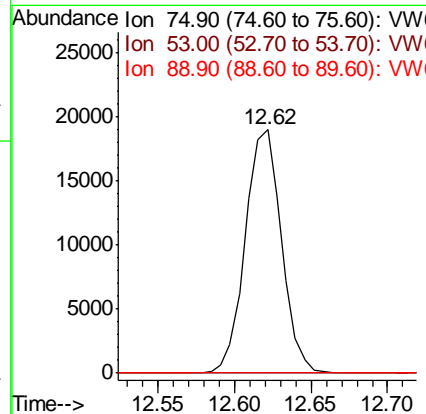
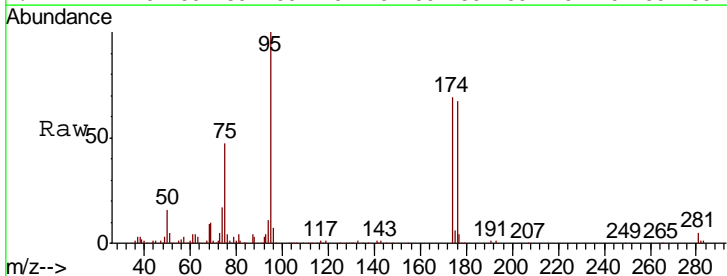
Instrument : MSVOA\_W  
 ClientSampled : TP-14-S

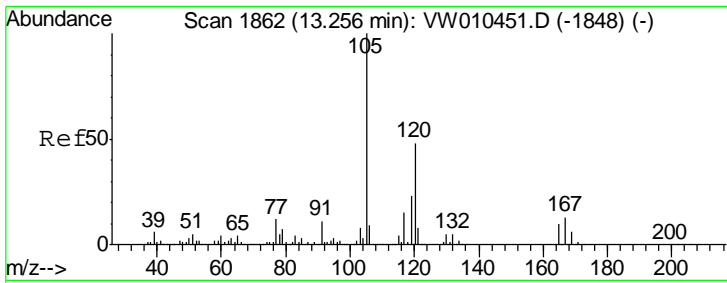
Tgt Ion: 75 Resp: 31161  
 Ion Ratio Lower Upper  
 75 100  
 77 1.3 170.0 510.1#



#81  
 trans-1,4-Dichloro-2-butene  
 Concen: 148.751 ug/l  
 RT: 12.62 min Scan# 1758  
 Delta R.T. 0.11 min  
 Lab File: VW010472.D  
 Acq: 21 May 2019 02:48

Tgt Ion: 75 Resp: 31161  
 Ion Ratio Lower Upper  
 75 100  
 53 0.1 69.8 104.8#  
 89 0.0 39.5 59.3#

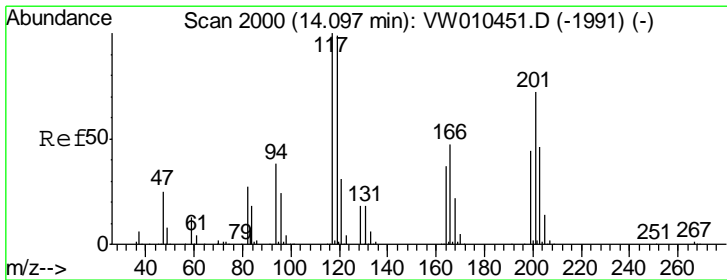
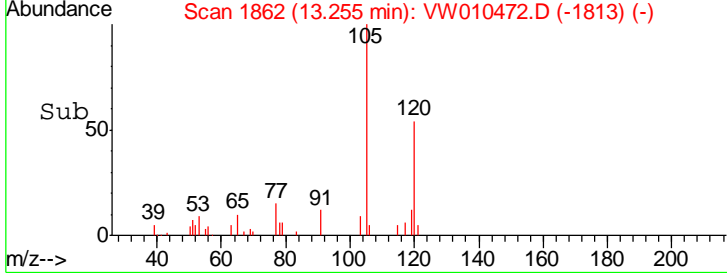
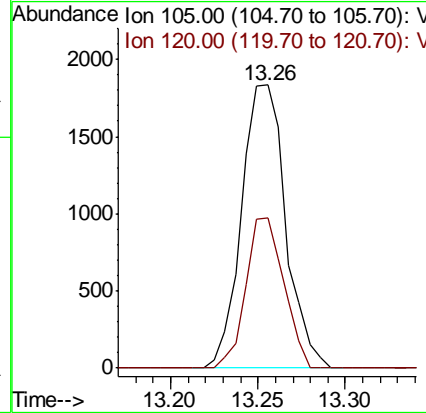
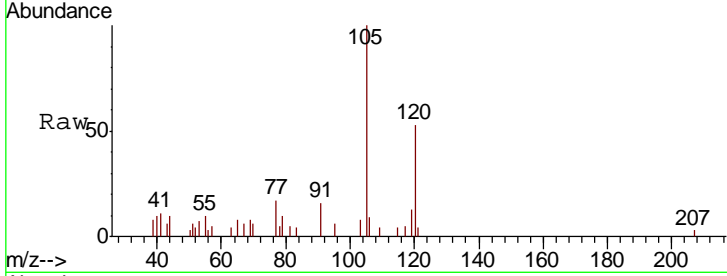




#84  
 1,2,4-Trimethylbenzene  
 Concen: 1.121 ug/l  
 RT: 13.26 min Scan# 1862  
 Delta R.T. -0.00 min  
 Lab File: VW010472.D  
 Acq: 21 May 2019 02:48

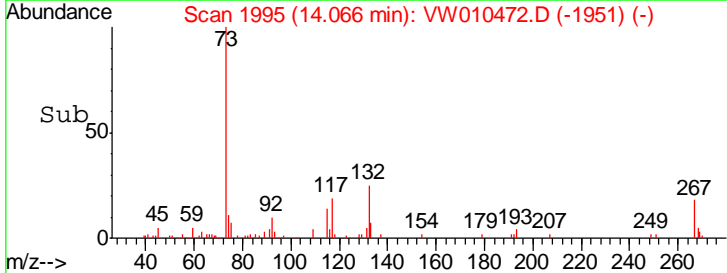
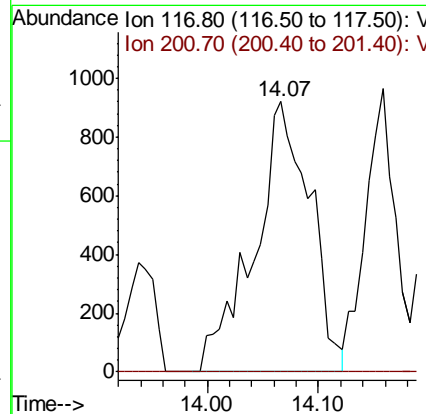
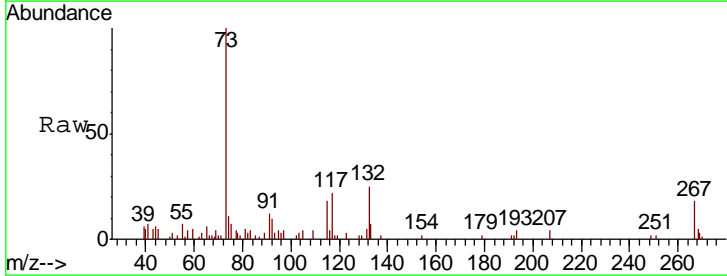
Instrument :  
 MSVOA\_W  
 ClientSampled :  
 TP-14-S

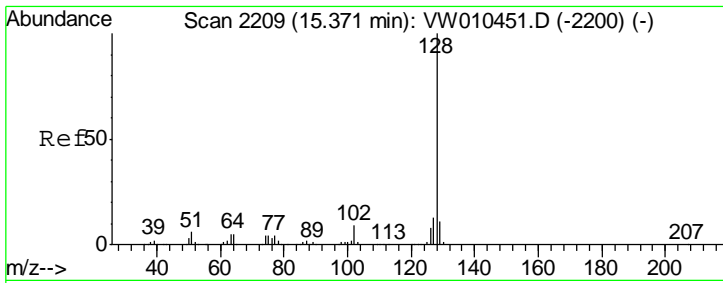
Tgt Ion:105 Resp: 3231  
 Ion Ratio Lower Upper  
 105 100  
 120 45.7 23.4 70.2



#90  
 Hexachloroethane  
 Concen: 5.199 ug/l  
 RT: 14.07 min Scan# 1995  
 Delta R.T. -0.03 min  
 Lab File: VW010472.D  
 Acq: 21 May 2019 02:48

Tgt Ion:117 Resp: 3223  
 Ion Ratio Lower Upper  
 117 100  
 201 0.0 34.6 103.8#





#95  
 Naphthalene  
 Concen: 5.380 ug/l  
 RT: 15.37 min Scan# 2209  
 Delta R.T. -0.00 min  
 Lab File: VW010472.D  
 Acq: 21 May 2019 02:48

Instrument :  
 MSVOA\_W  
 ClientSampled :  
 TP-14-S

Tot Ion:128 Resp: 10505

Ion	Ratio	Lower	Upper
128	100		
127	14.2	10.6	15.8
129	12.7	8.9	13.3

