

Data Path : W:\HPCHEM1\MSVOA\_W\DATA\VW052218\  
 Data File : VW002798.D  
 Acq On : 22 May 2018 22:00  
 Operator : JC/SY  
 Sample : J2952-12  
 Misc : 5.88G/10ML/MSVOA\_W/SOIL  
 ALS Vial : 1 Sample Multiplier: 1

Quant Time: May 23 06:55:55 2018  
 Quant Method : W:\HPCHEM1\MSVOA\_W\METHOD\SOM2WLM052218S.M  
 Quant Title : VOC Analysis  
 QLast Update : Wed May 23 06:53:11 2018  
 Response via : Initial Calibration

Internal Standards	R.T.	QIon	Response	Conc	Units	Dev(Min)
1) 1,4-Difluorobenzene	8.85	114	188085	25.00	ug/L	0.00
28) Chlorobenzene-d5	11.64	117	162870	25.00	ug/L	0.00
60) 1,4-Dichlorobenzene-d4	13.57	152	63881	25.00	ug/L	0.00

System Monitoring Compounds

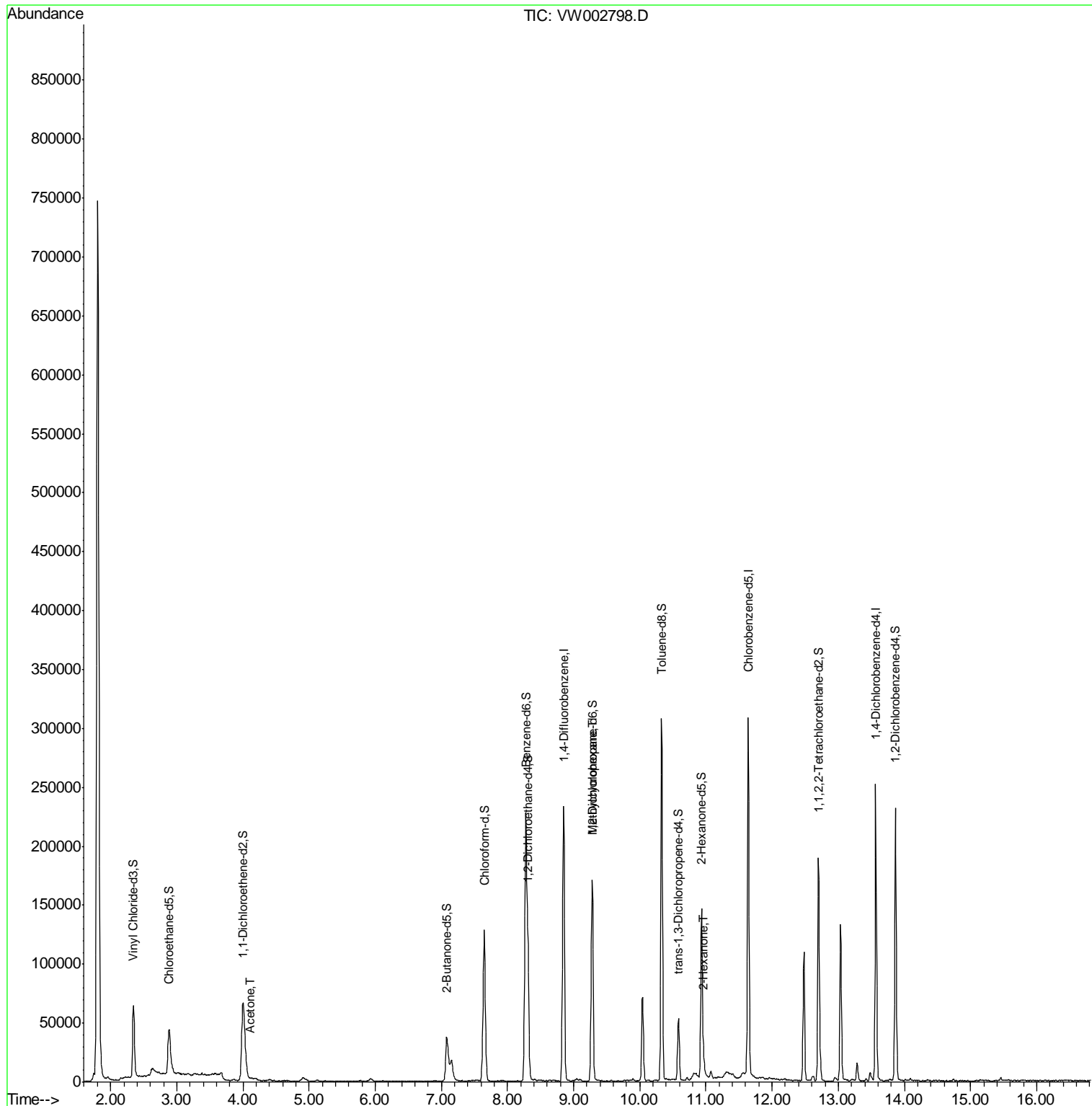
4) Vinyl Chloride-d3	2.34	65	69432	28.78	ug/L	0.00
Spiked Amount	25.000	Range	30 - 150	Recovery	=	115.12%
7) Chloroethane-d5	2.89	69	59551	27.60	ug/L	0.00
Spiked Amount	25.000	Range	30 - 150	Recovery	=	110.40%
10) 1,1-Dichloroethene-d2	4.01	63	83730	19.81	ug/L	0.00
Spiked Amount	25.000	Range	45 - 110	Recovery	=	79.24%
20) 2-Butanone-d5	7.08	46	58976	59.94	ug/L	0.00
Spiked Amount	50.000	Range	20 - 135	Recovery	=	119.88%
24) Chloroform-d	7.65	84	125909	27.93	ug/L	0.00
Spiked Amount	25.000	Range	40 - 150	Recovery	=	111.72%
26) 1,2-Dichloroethane-d4	8.31	65	78608	28.87	ug/L	0.00
Spiked Amount	25.000	Range	70 - 130	Recovery	=	115.48%
29) Benzene-d6	8.27	84	228524	29.50	ug/L	0.00
Spiked Amount	25.000	Range	20 - 135	Recovery	=	118.00%
33) 1,2-Dichloropropane-d6	9.28	67	76158	30.42	ug/L	0.00
Spiked Amount	25.000	Range	70 - 120	Recovery	=	121.68%#
37) Toluene-d8	10.33	98	199227	26.06	ug/L	0.00
Spiked Amount	25.000	Range	30 - 130	Recovery	=	104.24%
38) trans-1,3-Dichloropropene-	10.59	79	26981	22.54	ug/L	0.00
Spiked Amount	25.000	Range	30 - 135	Recovery	=	90.16%
39) 2-Hexanone-d5	10.93	63	42354	59.63	ug/L	0.00
Spiked Amount	50.000	Range	20 - 135	Recovery	=	119.26%
48) 1,1,2,2-Tetrachloroethane-	12.70	84	88103	32.11	ug/L	0.00
Spiked Amount	25.000	Range	45 - 120	Recovery	=	128.44%#
61) 1,2-Dichlorobenzene-d4	13.87	152	60409	25.73	ug/L	0.00
Spiked Amount	25.000	Range	75 - 120	Recovery	=	102.92%

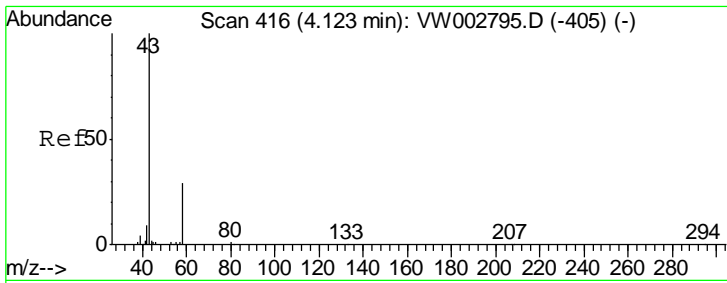
Target Compounds	R.T.	QIon	Response	Conc	Units	Qvalue
13) Acetone	4.12	43	2476	2.84	ug/L	99
36) Methylcyclohexane	9.28	83	18160	4.55	ug/L #	20
49) 2-Hexanone	10.96	43	8602	5.65	ug/L #	39

(#) = qualifier out of range (m) = manual integration (+) = signals summed

Data Path : W:\HPCHEM1\MSVOA\_W\DATA\VW052218\  
 Data File : VW002798.D  
 Acq On : 22 May 2018 22:00  
 Operator : JC/SY  
 Sample : J2952-12  
 Misc : 5.88G/10ML/MSVOA\_W/SOIL  
 ALS Vial : 1 Sample Multiplier: 1

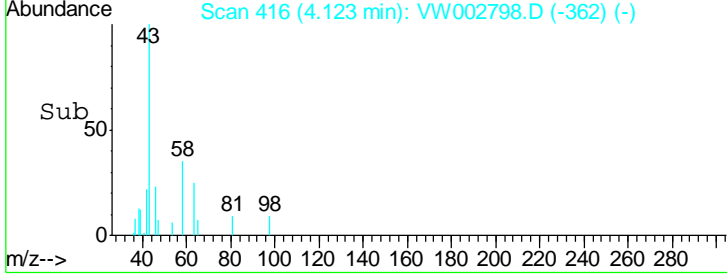
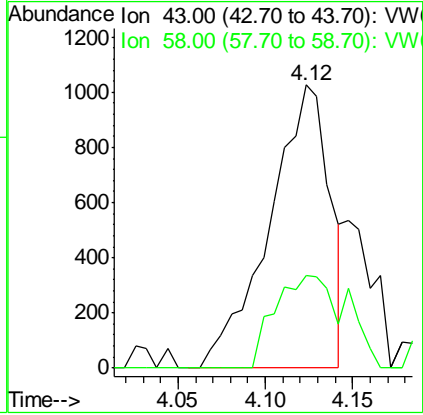
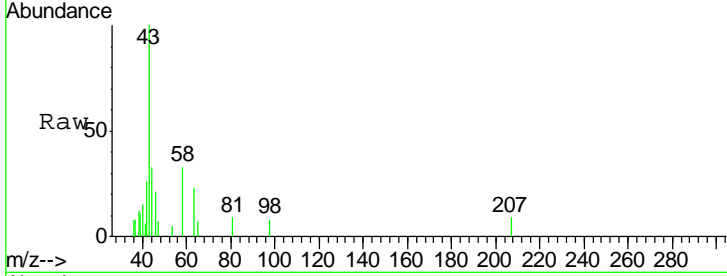
Quant Time: May 23 06:55:55 2018  
 Quant Method : W:\HPCHEM1\MSVOA\_W\METHOD\SOM2WLM052218S.M  
 Quant Title : VOC Analysis  
 QLast Update : Wed May 23 06:53:11 2018  
 Response via : Initial Calibration





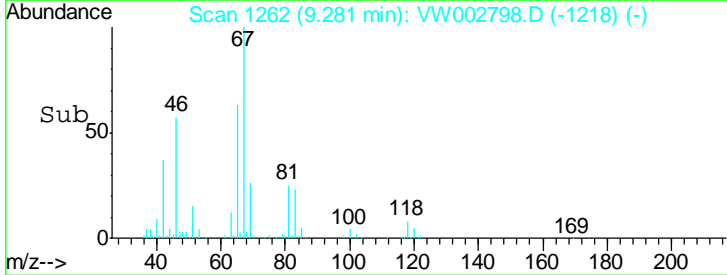
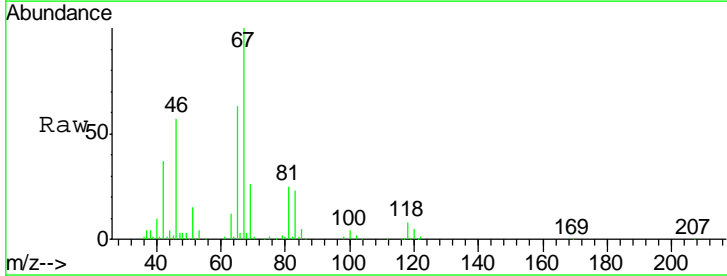
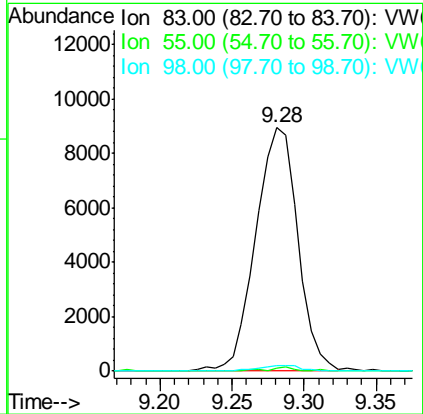
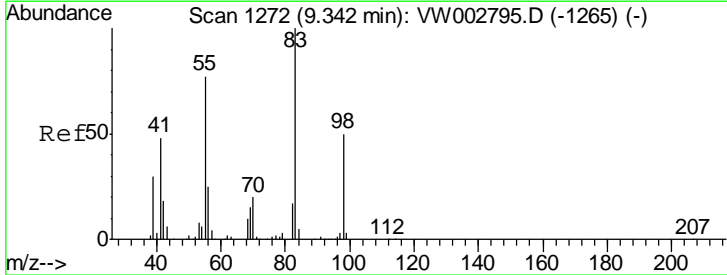
#13  
 Acetone  
 Concen: 2.84 ug/L  
 RT: 4.12 min Scan# 416  
 Delta R.T. 0.00 min  
 Lab File: VW002798.D  
 Acq: 22 May 2018 22:00

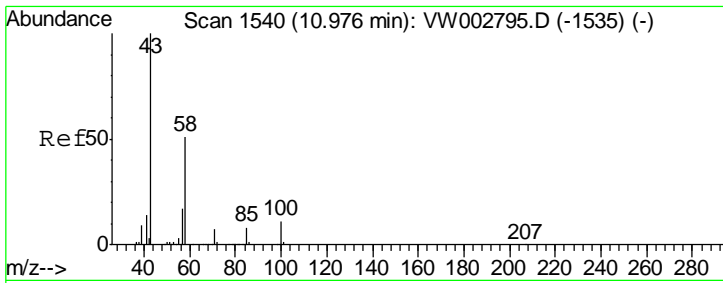
Tgt Ion	Resp	Lower	Upper
43	100		
58	30.7	0.0	59.8



#36  
 Methylcyclohexane  
 Concen: 4.55 ug/L  
 RT: 9.28 min Scan# 1262  
 Delta R.T. -0.06 min  
 Lab File: VW002798.D  
 Acq: 22 May 2018 22:00

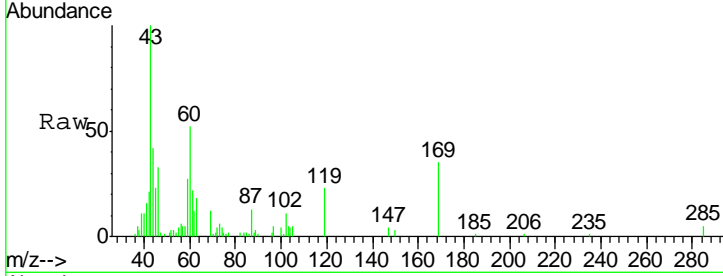
Tgt Ion	Resp	Lower	Upper
83	100		
55	0.7	60.5	90.7#
98	2.2	38.3	57.5#





#49  
 2-Hexanone  
 Concen: 5.65 ug/L  
 RT: 10.96 min Scan# 1538  
 Delta R.T. -0.01 min  
 Lab File: VW002798.D  
 Acq: 22 May 2018 22:00

Tgt Ion	Resp	Lower	Upper
43	100		
58	0.0	42.8	64.2#
57	0.0	15.9	23.9#
100	0.9	9.8	14.6#



Abundance Ion 43.00 (42.70 to 43.70): VW  
 Ion 58.00 (57.70 to 58.70): VW  
 Ion 57.00 (56.70 to 57.70): VW  
 Ion 100.00 (99.70 to 100.70): VW

