

Data Path : W:\HPCHEM1\MSVOA_W\DATA\VW052218\
 Data File : VW002809.D
 Acq On : 23 May 2018 02:47
 Operator : JC/SY
 Sample : J3042-01
 Misc : 5.09G/10ML/MSVOA_W/SOIL
 ALS Vial : 1 Sample Multiplier: 1

Quant Time: May 23 06:57:18 2018
 Quant Method : W:\HPCHEM1\MSVOA_W\METHOD\SOM2WLM052218S.M
 Quant Title : VOC Analysis
 QLast Update : Wed May 23 06:53:11 2018
 Response via : Initial Calibration

Internal Standards	R.T.	QIon	Response	Conc	Units	Dev(Min)
1) 1,4-Difluorobenzene	8.85	114	252383	25.00	ug/L	0.00
28) Chlorobenzene-d5	11.64	117	229223	25.00	ug/L	0.00
60) 1,4-Dichlorobenzene-d4	13.57	152	98141	25.00	ug/L	0.00

System Monitoring Compounds

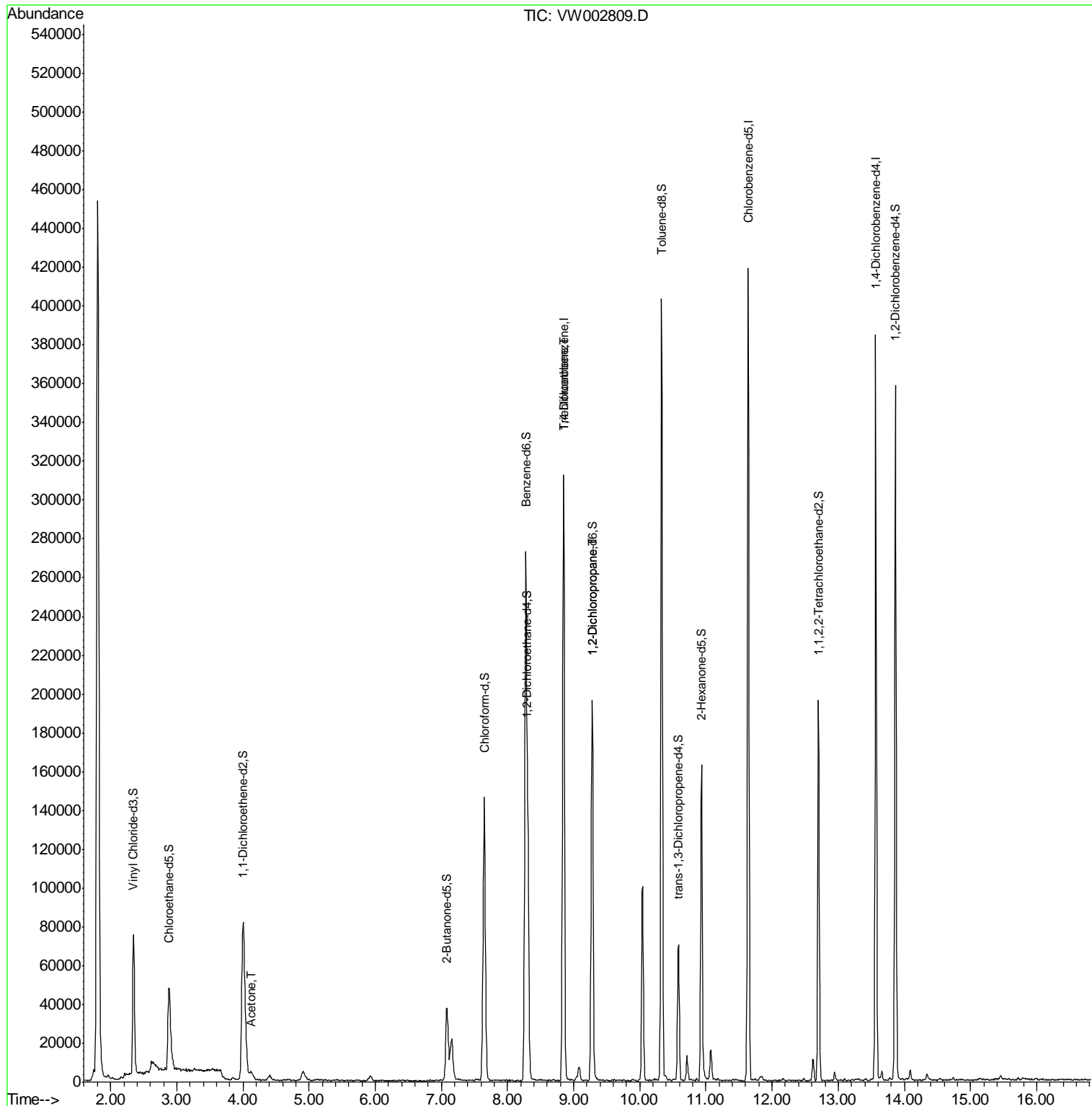
4) Vinyl Chloride-d3	2.34	65	81142	25.07	ug/L	0.00
Spiked Amount	25.000	Range	30 - 150	Recovery	=	100.28%
7) Chloroethane-d5	2.88	69	65032	22.46	ug/L	0.00
Spiked Amount	25.000	Range	30 - 150	Recovery	=	89.84%
10) 1,1-Dichloroethene-d2	4.00	63	103947	18.33	ug/L	-0.01
Spiked Amount	25.000	Range	45 - 110	Recovery	=	73.32%
20) 2-Butanone-d5	7.08	46	61540	46.61	ug/L	0.00
Spiked Amount	50.000	Range	20 - 135	Recovery	=	93.22%
24) Chloroform-d	7.65	84	142755	23.60	ug/L	0.00
Spiked Amount	25.000	Range	40 - 150	Recovery	=	94.40%
26) 1,2-Dichloroethane-d4	8.31	65	88029	24.09	ug/L	0.00
Spiked Amount	25.000	Range	70 - 130	Recovery	=	96.36%
29) Benzene-d6	8.28	84	274001	25.14	ug/L	0.00
Spiked Amount	25.000	Range	20 - 135	Recovery	=	100.56%
33) 1,2-Dichloropropane-d6	9.28	67	86778	24.63	ug/L	0.00
Spiked Amount	25.000	Range	70 - 120	Recovery	=	98.52%
37) Toluene-d8	10.33	98	256954	23.88	ug/L	0.00
Spiked Amount	25.000	Range	30 - 130	Recovery	=	95.52%
38) trans-1,3-Dichloropropene-	10.59	79	35794	21.24	ug/L	0.00
Spiked Amount	25.000	Range	30 - 135	Recovery	=	84.96%
39) 2-Hexanone-d5	10.93	63	48559	48.58	ug/L	0.00
Spiked Amount	50.000	Range	20 - 135	Recovery	=	97.16%
48) 1,1,2,2-Tetrachloroethane-	12.70	84	90264	23.38	ug/L	0.00
Spiked Amount	25.000	Range	45 - 120	Recovery	=	93.52%
61) 1,2-Dichlorobenzene-d4	13.87	152	94311	26.15	ug/L	0.00
Spiked Amount	25.000	Range	75 - 120	Recovery	=	104.60%

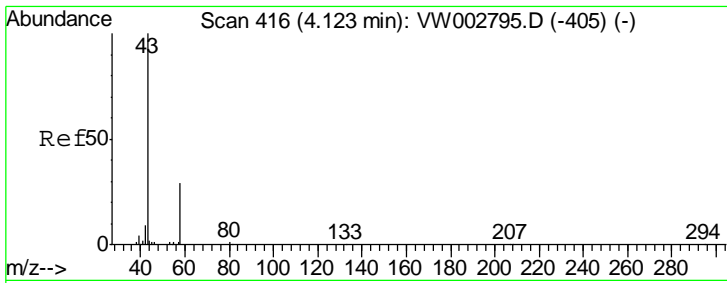
Target Compounds	R.T.	QIon	Response	Conc	Units	Qvalue
13) Acetone	4.12	43	5656	4.84	ug/L	83
35) Trichloroethene	8.84	95	7546	2.22	ug/L #	4
40) 1,2-Dichloropropane	9.28	63	10752	3.34	ug/L #	89

(#) = qualifier out of range (m) = manual integration (+) = signals summed

Data Path : W:\HPCHEM1\MSVOA_W\DATA\VW052218\
 Data File : VW002809.D
 Acq On : 23 May 2018 02:47
 Operator : JC/SY
 Sample : J3042-01
 Misc : 5.09G/10ML/MSVOA_W/SOIL
 ALS Vial : 1 Sample Multiplier: 1

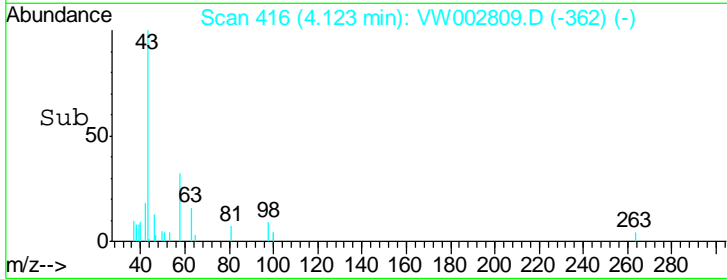
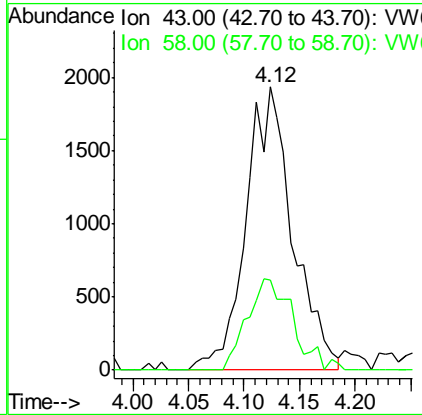
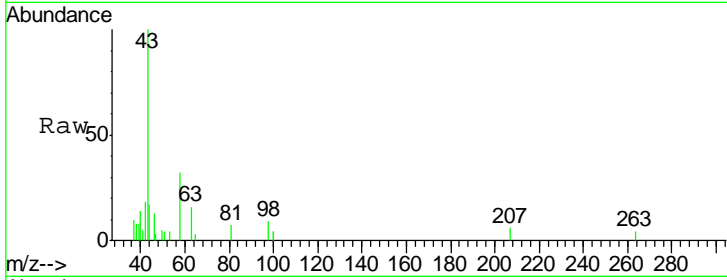
Quant Time: May 23 06:57:18 2018
 Quant Method : W:\HPCHEM1\MSVOA_W\METHOD\SOM2WLM052218S.M
 Quant Title : VOC Analysis
 QLast Update : Wed May 23 06:53:11 2018
 Response via : Initial Calibration





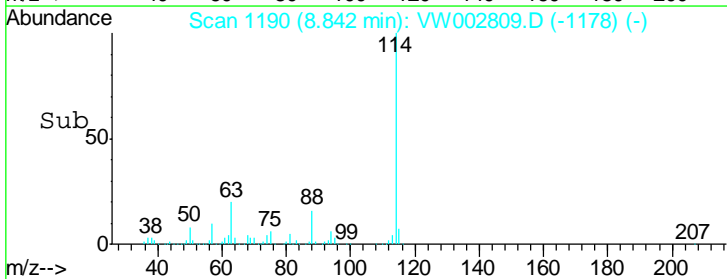
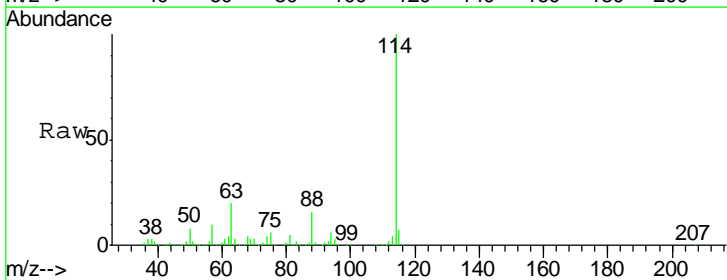
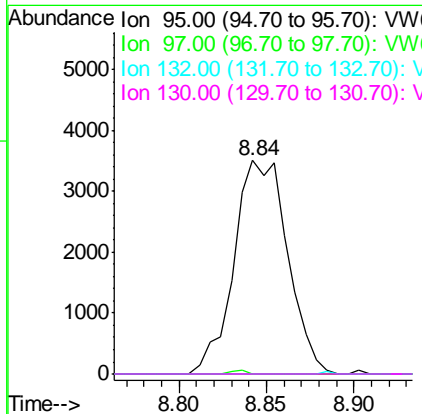
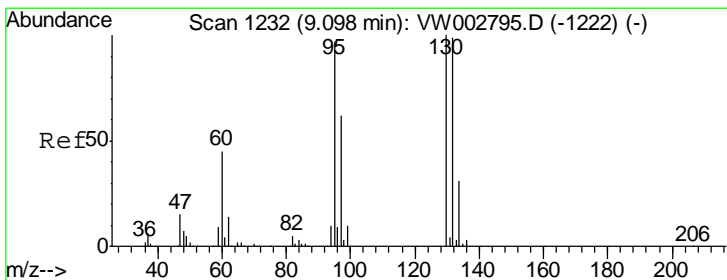
#13
 Acetone
 Concen: 4.84 ug/L
 RT: 4.12 min Scan# 416
 Delta R.T. 0.00 min
 Lab File: VW002809.D
 Acq: 23 May 2018 02:47

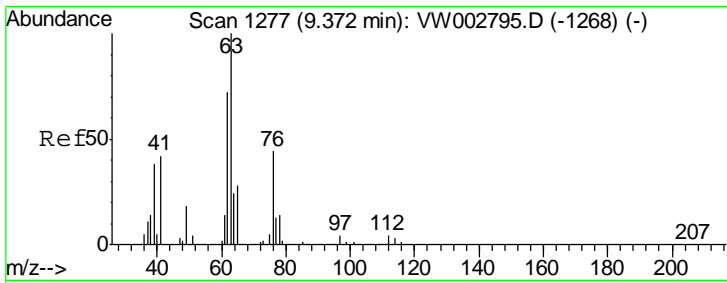
Tgt Ion	Resp	Lower	Upper
43	100		
58	20.5	0.0	59.8



#35
 Trichloroethene
 Concen: 2.22 ug/L
 RT: 8.84 min Scan# 1190
 Delta R.T. -0.26 min
 Lab File: VW002809.D
 Acq: 23 May 2018 02:47

Tgt Ion	Resp	Lower	Upper
95	100		
97	0.6	45.3	84.1#
132	0.0	71.4	132.6#
130	0.0	72.5	134.7#





#40
 1,2-Dichloropropane
 Concen: 3.34 ug/L
 RT: 9.28 min Scan# 1262
 Delta R.T. -0.09 min
 Lab File: VW002809.D
 Acq: 23 May 2018 02:47

Tgt Ion: 63 Resp: 10752

Ion	Ratio	Lower	Upper
63	100		
112	0.6	3.4	5.0#

