

Data Path : Z:\VOASRV\HPCHEM1\MSVOA W\DATA\VW052219\  
 Data File : VW010505.D  
 Acq On : 22 May 2019 12:52  
 Operator : SY/VA  
 Sample : K2986-02  
 Misc : 6.69G/5ML/MSVOA W/SOIL  
 ALS Vial : 7 Sample Multiplier: 1

Instrument :  
 MSVOA\_W  
 ClientSampleId :  
 FESB-21(4.5-5)

Integration Parameters: RTEINT.P

Integrator: RTE  
 Smoothing : ON Filtering: 5  
 Sampling : 1 Min Area: 3 % of largest Peak  
 Start Thrs: 0.2 Max Peaks: 100  
 Stop Thrs : 0 Peak Location: TOP

If leading or trailing edge < 100 prefer < Baseline drop else tangent >  
 Peak separation: 5

Method : Z:\VOASRV\HPCHEM1\MSVOA\_W\METHOD\82W052019S.M  
 Title : SW846 8260

Signal : TIC

peak #	R.T. min	first scan	max scan	last scan	PK TY	peak height	corr. area	corr. % max.	% of total
1	3.251	216	221	231	rVB2	5616	14308	2.18%	0.416%
2	4.123	353	364	374	rBV2	5299	14956	2.28%	0.435%
3	4.921	480	495	506	rBV2	7432	26808	4.09%	0.780%
4	7.141	849	859	868	rBV2	5687	16324	2.49%	0.475%
5	7.884	972	981	986	rBV	86137	203278	31.04%	5.917%
6	7.945	986	991	1002	rVB	151248	334803	51.13%	9.745%
7	8.305	1040	1050	1062	rBV	85261	188856	28.84%	5.497%
8	8.841	1129	1138	1148	rBV	232020	454200	69.36%	13.220%
9	10.323	1373	1381	1388	rBV	376562	654868	100.00%	19.061%
10	10.390	1388	1392	1398	rVB	34873	59178	9.04%	1.722%
11	10.707	1438	1444	1450	rBV	5292	9050	1.38%	0.263%
12	11.634	1588	1596	1607	rBV	310136	527193	80.50%	15.345%
13	12.621	1751	1758	1766	rBV	252807	417977	63.83%	12.166%
14	13.560	1905	1912	1919	rBV	306936	491218	75.01%	14.298%
15	14.072	1990	1996	2004	rVB2	8677	14740	2.25%	0.429%
16	14.530	2063	2071	2078	rBV3	4501	7925	1.21%	0.231%

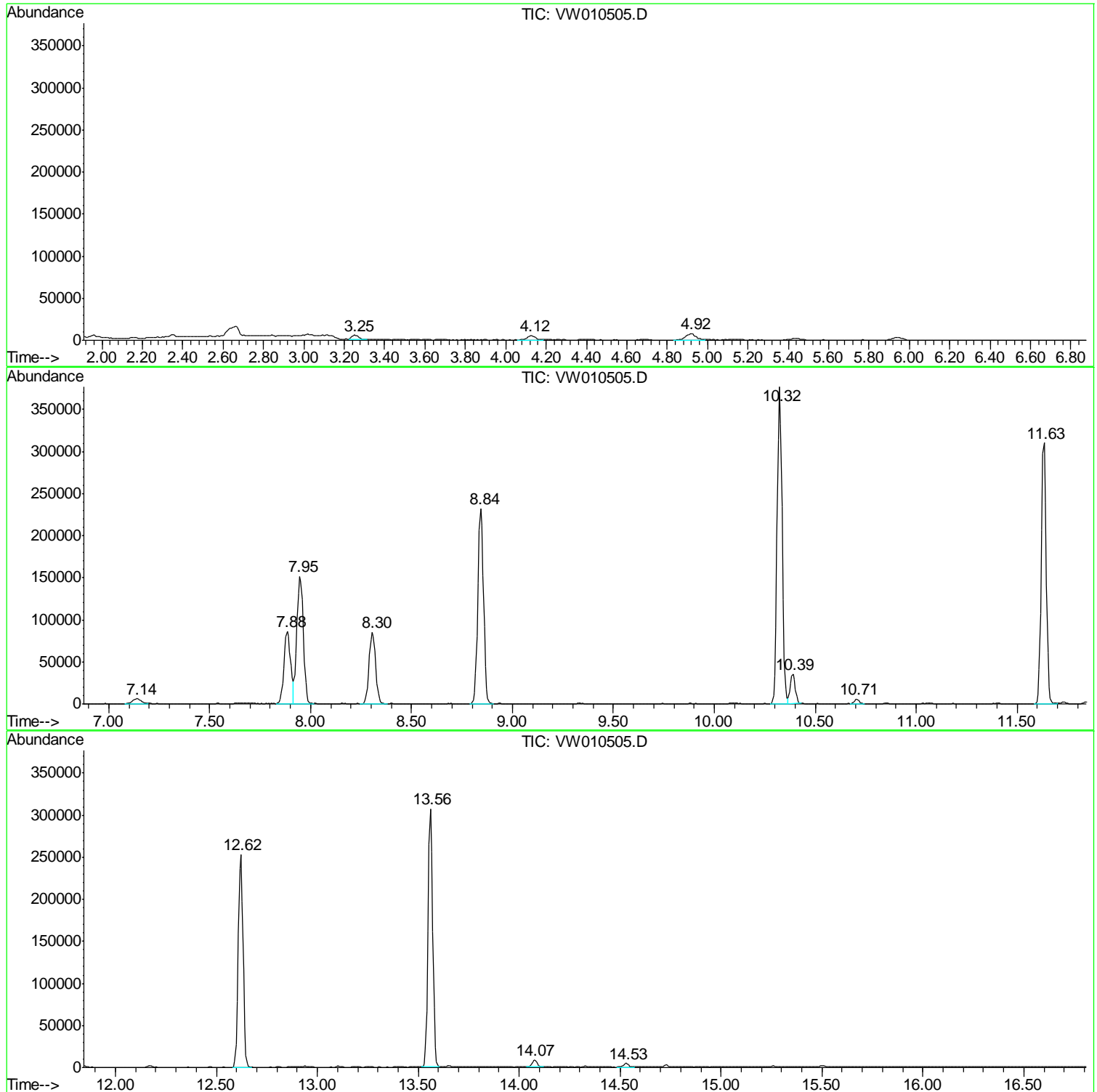
Sum of corrected areas: 3435682

Data Path : Z:\VOASRV\HPCHEM1\MSVOA W\DATA\VW052219\  
Data File : VW010505.D  
Acq On : 22 May 2019 12:52  
Operator : SY/VA  
Sample : K2986-02  
Misc : 6.69G/5ML/MSVOA W/SOIL  
ALS Vial : 7 Sample Multiplier: 1

Instrument :  
MSVOA\_W  
ClientSampleId :  
FESB-21(4.5-5)

Quant Method : Z:\VOASRV\HPCHEM1\MSVOA\_W\METHOD\82W052019S.M  
Quant Title : SW846 8260

TIC Library : C:\DATABASE\NIST11.L  
TIC Integration Parameters: LSCINT.P



Data Path : Z:\VOASRV\HPCHEM1\MSVOA\_W\DATA\VW052219\  
Data File : VW010505.D  
Acq On : 22 May 2019 12:52  
Operator : SY/VA  
Sample : K2986-02  
Misc : 6.69G/5ML/MSVOA\_W/SOIL  
ALS Vial : 7 Sample Multiplier: 1

Instrument :  
MSVOA\_W  
ClientSampleId :  
FESB-21(4.5-5)

Quant Method : Z:\VOASRV\HPCHEM1\MSVOA\_W\METHOD\82W052019S.M  
Quant Title : SW846 8260

TIC Library : C:\DATABASE\NIST11.L  
TIC Integration Parameters: LSCINT.P

No Library Search Compounds Detected

\*\*\*\*\*

Data Path : Z:\VOASRV\HPCHEM1\MSVOA\_W\DATA\VW052219\  
Data File : VW010505.D  
Acq On : 22 May 2019 12:52  
Operator : SY/VA  
Sample : K2986-02  
Misc : 6.69G/5ML/MSVOA\_W/SOIL  
ALS Vial : 7 Sample Multiplier: 1

Instrument :  
MSVOA\_W  
ClientSampleId :  
FESB-21(4.5-5)

Quant Method : Z:\VOASRV\HPCHEM1\MSVOA\_W\METHOD\82W052019S.M  
Quant Title : SW846 8260

TIC Library : C:\DATABASE\NIST11.L  
TIC Integration Parameters: LSCINT.P

TIC Top Hit name	RT	EstConc	Units	Response	--Internal Standard--			
					#	RT	Resp	Conc

---