

Data Path : Z:\VOASRV\HPCHEM1\MSVOA W\DATA\VW052220\
 Data File : VW015450.D
 Acq On : 22 May 2020 14:19
 Operator : SY/VA
 Sample : L2753-02
 Misc : 5.27G/10.0mL/MSVOA W/SOIL
 ALS Vial : 6 Sample Multiplier: 1

Instrument :
 MSVOA_W
 ClientSampleId :
 GAXE3

Integration Parameters: LSCINT.P

Integrator: RTE
 Smoothing : OFF Filtering: 5
 Sampling : 1 Min Area: 0 % of largest Peak
 Start Thrs: 0.2 Max Peaks: 100
 Stop Thrs : 0 Peak Location: TOP

If leading or trailing edge < 100 prefer < Baseline drop else tangent >
 Peak separation: 5

Method : Z:\VOASRV\HPCHEM1\MSVOA_W\METHOD\SOM2WLM050420S.M
 Title : VOC Analysis

Signal : TIC

peak #	R.T. min	first scan	max scan	last scan	PK TY	peak height	corr. area	corr. % max.	% of total
1	2.154	37	41	44	rBV3	801	1456	0.12%	0.014%
2	2.355	68	74	86	rBV	62908	117607	9.38%	1.115%
3	2.897	156	163	180	rVB	56310	144217	11.51%	1.367%
4	4.019	335	347	360	rBV	114304	350587	27.97%	3.324%
5	4.403	400	410	423	rVV2	3269	10652	0.85%	0.101%
6	4.543	431	433	439	rVB3	315	452	0.04%	0.004%
7	4.604	439	443	444	rBV3	413	439	0.04%	0.004%
8	4.678	453	455	459	rBV2	481	660	0.05%	0.006%
9	4.915	485	494	505	rVV3	3273	10914	0.87%	0.103%
10	5.141	528	531	532	rBV2	207	249	0.02%	0.002%
11	5.257	548	550	553	rBV2	208	279	0.02%	0.003%
12	5.452	578	582	584	rVV3	221	315	0.03%	0.003%
13	5.775	631	635	637	rBV3	439	810	0.06%	0.008%
14	5.940	654	662	670	rVB4	1630	4675	0.37%	0.044%
15	6.488	750	752	756	rVB3	283	395	0.03%	0.004%
16	6.903	812	820	821	rBV2	1285	2183	0.17%	0.021%
17	7.080	839	849	856	rBV	44130	123081	9.82%	1.167%
18	7.256	871	878	892	rVB	39449	97769	7.80%	0.927%
19	7.653	931	943	955	rBV	210938	517890	41.32%	4.911%
20	7.951	982	992	1002	rVV5	2569	6616	0.53%	0.063%
21	8.275	1033	1045	1062	rBV2	411456	1253341	100.00%	11.884%
22	8.403	1064	1066	1072	rVB3	901	1319	0.11%	0.013%
23	8.555	1085	1091	1093	rBV4	649	1284	0.10%	0.012%
24	8.628	1097	1103	1104	rBV2	466	746	0.06%	0.007%
25	8.689	1109	1113	1124	rVB7	1320	2988	0.24%	0.028%
26	8.841	1127	1138	1149	rBV	466921	933665	74.49%	8.853%
27	9.037	1164	1170	1172	rVV5	1700	2871	0.23%	0.027%
28	9.079	1173	1177	1183	rVV2	2771	5828	0.46%	0.055%
29	9.274	1200	1209	1225	rBV	302446	615721	49.13%	5.838%
30	9.415	1226	1232	1238	rVB2	2972	6109	0.49%	0.058%
31	9.658	1266	1272	1281	rBV3	4067	8158	0.65%	0.077%
32	9.878	1307	1308	1312	rBV	211	311	0.02%	0.003%
33	10.036	1326	1334	1343	rVV	180068	321092	25.62%	3.045%
34	10.122	1345	1348	1350	rVV3	1989	3143	0.25%	0.030%

Data Path : Z:\VOASRV\HPCHEM1\MSVOA W\DATA\VW052220\
 Data File : VW015450.D
 Acq On : 22 May 2020 14:19
 Operator : SY/VA
 Sample : L2753-02
 Misc : 5.27G/10.0mL/MSVOA W/SOIL
 ALS Vial : 6 Sample Multiplier: 1

Instrument :
 MSVOA_W
 ClientSampleId :
 GAXE3

Integration Parameters: LSCINT.P

Integrator: RTE
 Smoothing : OFF
 Sampling : 1
 Start Thrs: 0.2
 Stop Thrs : 0

Filtering: 5
 Min Area: 0 % of largest Peak
 Max Peaks: 100
 Peak Location: TOP

If leading or trailing edge < 100 prefer < Baseline drop else tangent >
 Peak separation: 5

Method : Z:\VOASRV\HPCHEM1\MSVOA_W\METHOD\SOM2WLM050420S.M
 Title : VOC Analysis

35	10.158	1351	1354	1359	rVV3	2314	4085	0.33%	0.039%
36	10.213	1359	1363	1369	rVB3	758	1258	0.10%	0.012%
37	10.323	1372	1381	1388	rBV	612617	1078611	86.06%	10.227%
38	10.390	1388	1392	1400	rVV	18989	33703	2.69%	0.320%
39	10.506	1407	1411	1416	rBV4	616	1082	0.09%	0.010%
40	10.579	1416	1423	1437	rBV	117552	205508	16.40%	1.949%
41	10.707	1437	1444	1451	rVV	82399	146797	11.71%	1.392%
42	10.859	1464	1469	1474	rBV4	4807	8377	0.67%	0.079%
43	10.926	1474	1480	1495	rVV	197087	330242	26.35%	3.131%
44	11.073	1498	1504	1513	rVB2	13337	22272	1.78%	0.211%
45	11.189	1521	1523	1525	rVB2	440	292	0.02%	0.003%
46	11.329	1542	1546	1548	rBV2	212	340	0.03%	0.003%
47	11.408	1555	1559	1562	rBV2	347	605	0.05%	0.006%
48	11.634	1588	1596	1605	rBV	667389	1132673	90.37%	10.740%
49	11.719	1606	1610	1611	rBV2	591	733	0.06%	0.007%
50	11.792	1618	1622	1624	rBV2	415	563	0.04%	0.005%
51	11.835	1624	1629	1636	rVV2	2943	6013	0.48%	0.057%
52	11.890	1636	1638	1640	rVV3	390	385	0.03%	0.004%
53	11.945	1643	1647	1652	rBV4	1091	1683	0.13%	0.016%
54	12.042	1661	1663	1664	rBV	303	263	0.02%	0.002%
55	12.103	1668	1673	1675	rBV3	469	808	0.06%	0.008%
56	12.164	1679	1683	1692	rBV3	1644	3678	0.29%	0.035%
57	12.231	1692	1694	1697	rBV3	457	572	0.05%	0.005%
58	12.292	1700	1704	1706	rVB3	379	405	0.03%	0.004%
59	12.341	1706	1712	1718	rBV3	7009	12200	0.97%	0.116%
60	12.384	1718	1719	1723	rVB3	346	334	0.03%	0.003%
61	12.457	1726	1731	1732	rBV2	322	414	0.03%	0.004%
62	12.609	1749	1756	1763	rVB2	159104	261544	20.87%	2.480%
63	12.694	1763	1770	1778	rVB	250962	418327	33.38%	3.967%
64	12.768	1778	1782	1786	rBV2	365	594	0.05%	0.006%
65	12.804	1786	1788	1793	rVB2	374	480	0.04%	0.005%
66	12.865	1793	1798	1801	rBV2	1027	1712	0.14%	0.016%
67	12.938	1806	1810	1815	rVB5	1802	3363	0.27%	0.032%
68	13.054	1826	1829	1832	rBV3	571	934	0.07%	0.009%
69	13.091	1833	1835	1838	rVV2	384	426	0.03%	0.004%
70	13.200	1850	1853	1855	rVB3	381	414	0.03%	0.004%
71	13.255	1855	1862	1871	rBV5	2941	9514	0.76%	0.090%

Data Path : Z:\VOASRV\HPCHEM1\MSVOA W\DATA\VW052220\
 Data File : VW015450.D
 Acq On : 22 May 2020 14:19
 Operator : SY/VA
 Sample : L2753-02
 Misc : 5.27G/10.0mL/MSVOA W/SOIL
 ALS Vial : 6 Sample Multiplier: 1

Instrument :
 MSVOA_W
 ClientSampleId :
 GAXE3

Integration Parameters: LSCINT.P

Integrator: RTE
 Smoothing : OFF
 Sampling : 1
 Start Thrs: 0.2
 Stop Thrs : 0

Filtering: 5
 Min Area: 0 % of largest Peak
 Max Peaks: 100
 Peak Location: TOP

If leading or trailing edge < 100 prefer < Baseline drop else tangent >
 Peak separation: 5

Method : Z:\VOASRV\HPCHEM1\MSVOA_W\METHOD\SOM2WLM050420S.M
 Title : VOC Analysis

72	13.396	1879	1885	1895	rBV2	19415	31974	2.55%	0.303%
73	13.475	1895	1898	1900	rVV3	743	974	0.08%	0.009%
74	13.499	1900	1902	1905	rVV4	842	1071	0.09%	0.010%
75	13.560	1905	1912	1922	rVV	687693	1096091	87.45%	10.393%
76	13.652	1922	1927	1939	rVB2	12295	21933	1.75%	0.208%
77	13.792	1947	1950	1952	rVB3	437	409	0.03%	0.004%
78	13.853	1952	1960	1973	rBV	577783	934978	74.60%	8.865%
79	14.024	1984	1988	1989	rBV2	867	1025	0.08%	0.010%
80	14.072	1989	1996	2003	rVB2	70464	115071	9.18%	1.091%
81	14.206	2015	2018	2021	rBV3	222	286	0.02%	0.003%
82	14.328	2032	2038	2046	rBV	22774	36780	2.93%	0.349%
83	14.530	2067	2071	2076	rVB3	662	826	0.07%	0.008%
84	14.621	2084	2086	2087	rBV	621	411	0.03%	0.004%
85	14.725	2099	2103	2107	rVB3	910	1419	0.11%	0.013%
86	14.761	2107	2109	2110	rBV2	327	271	0.02%	0.003%
87	14.822	2115	2119	2121	rBV5	286	380	0.03%	0.004%
88	14.883	2126	2129	2130	rBV2	571	528	0.04%	0.005%
89	15.017	2149	2151	2153	rBV2	344	364	0.03%	0.003%
90	15.078	2159	2161	2163	rBV2	364	349	0.03%	0.003%
91	15.182	2173	2178	2189	rVB5	7190	11897	0.95%	0.113%
92	15.365	2206	2208	2212	rVB4	546	590	0.05%	0.006%
93	15.493	2223	2229	2236	rVV	24191	44723	3.57%	0.424%
94	15.554	2236	2239	2246	rVB6	894	1588	0.13%	0.015%
95	15.657	2251	2256	2260	rBV5	492	1321	0.11%	0.013%
96	15.743	2268	2270	2273	rVB4	546	634	0.05%	0.006%
97	15.840	2284	2286	2289	rVB3	381	353	0.03%	0.003%
98	16.090	2325	2327	2329	rBV2	518	535	0.04%	0.005%
99	16.419	2379	2381	2383	rBV2	419	387	0.03%	0.004%
100	16.554	2401	2403	2404	rBV2	413	269	0.02%	0.003%

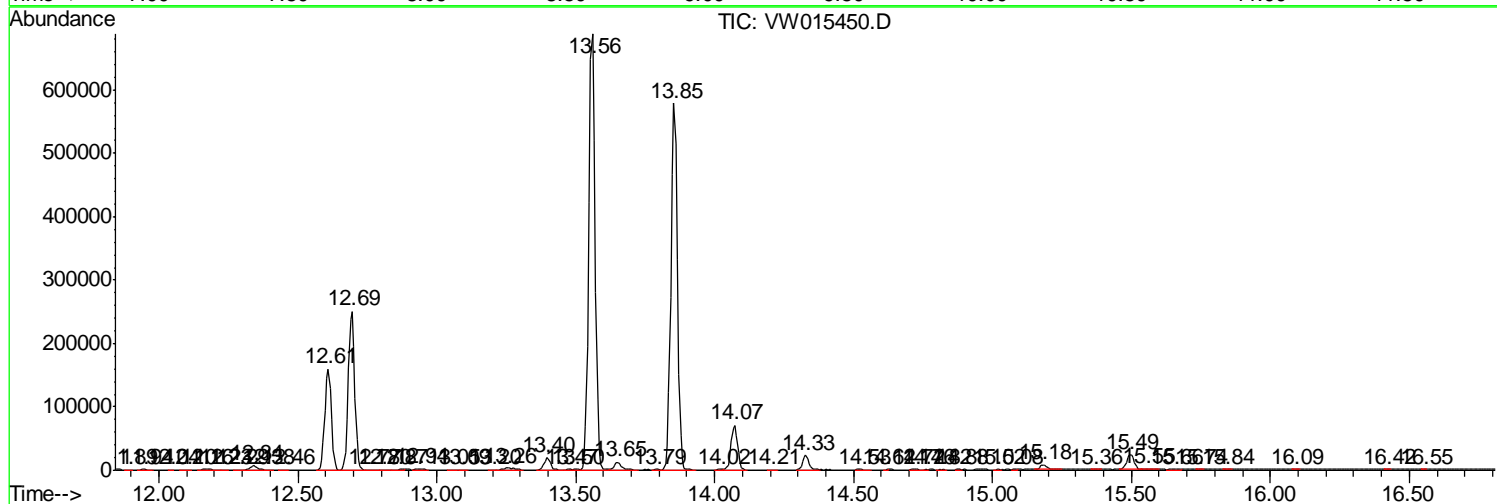
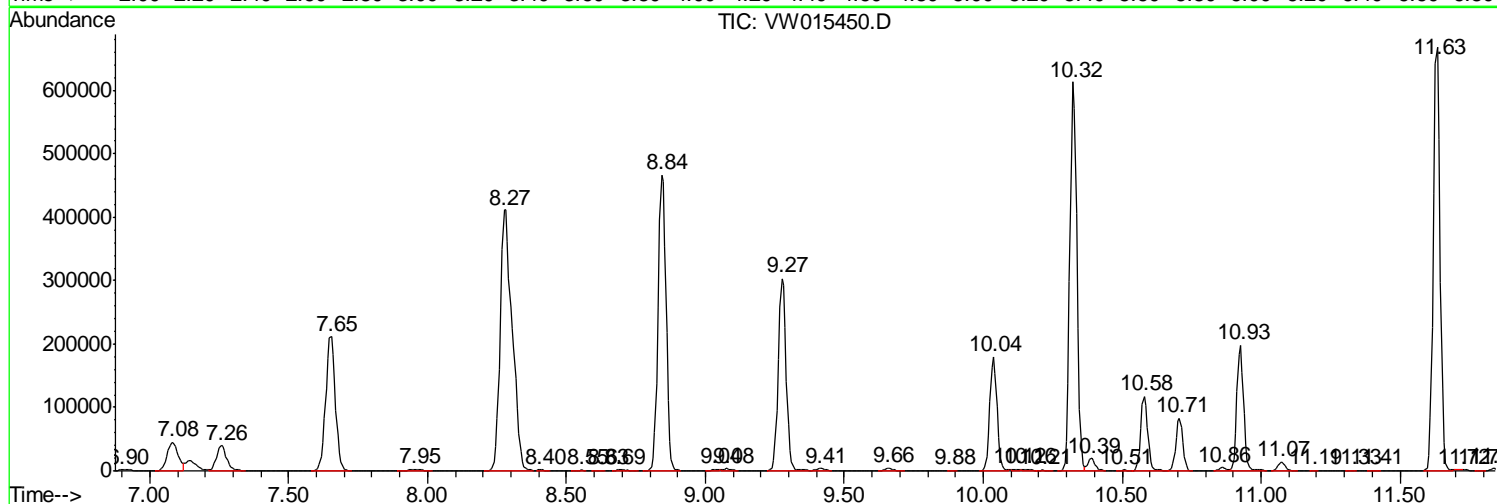
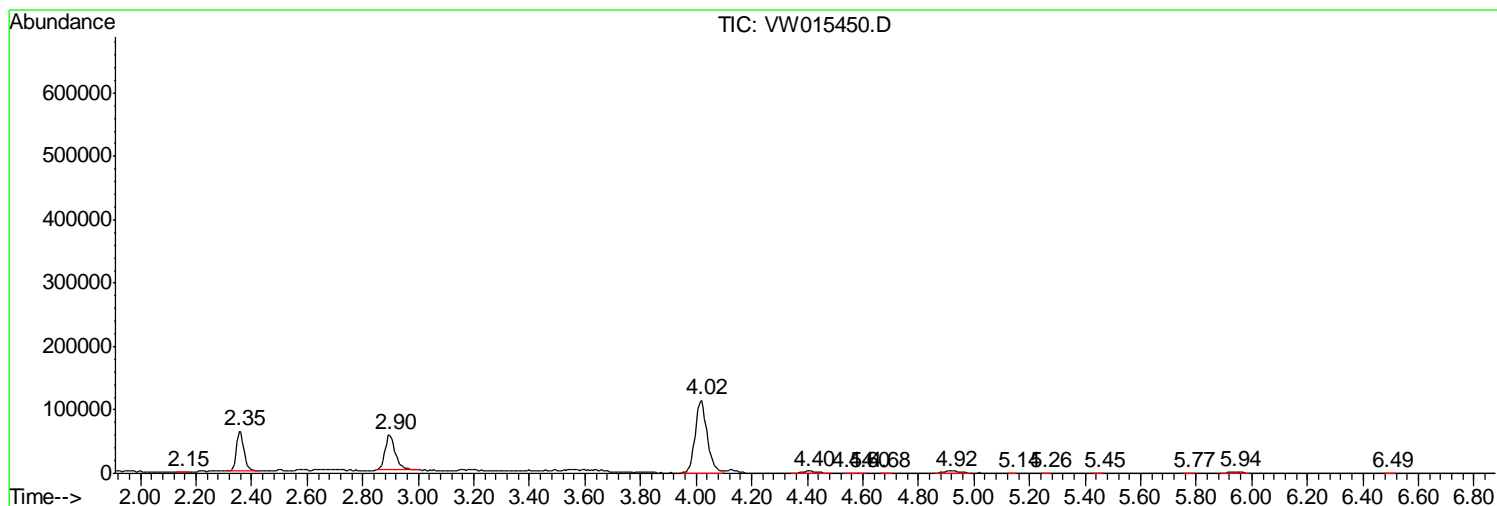
Sum of corrected areas: 10546463

Data Path : Z:\VOASRV\HPCHEM1\MSVOA W\DATA\VW052220\
 Data File : VW015450.D
 Acq On : 22 May 2020 14:19
 Operator : SY/VA
 Sample : L2753-02
 Misc : 5.27G/10.0mL/MSVOA W/SOIL
 ALS Vial : 6 Sample Multiplier: 1

Instrument :
 MSVOA_W
 ClientSampleId :
 GAXE3

Quant Method : Z:\VOASRV\HPCHEM1\MSVOA_W\METHOD\SOM2WLM050420S.M
 Quant Title : VOC Analysis

TIC Library : C:\DATABASE\NIST11.L
 TIC Integration Parameters: LSCINT.P



Data Path : Z:\VOASRV\HPCHEM1\MSVOA W\DATA\VW052220\
 Data File : VW015450.D
 Acq On : 22 May 2020 14:19
 Operator : SY/VA
 Sample : L2753-02
 Misc : 5.27G/10.0mL/MSVOA W/SOIL
 ALS Vial : 6 Sample Multiplier: 1

Instrument :
 MSVOA_W
 ClientSampled :
 GAXE3

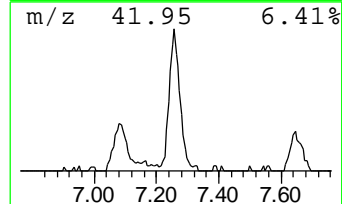
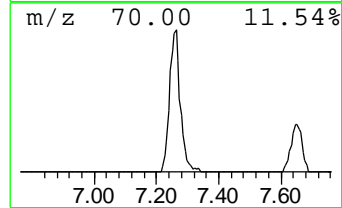
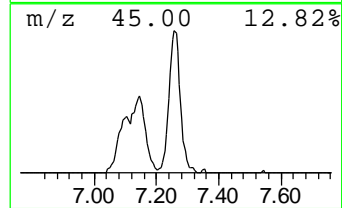
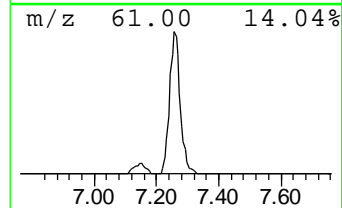
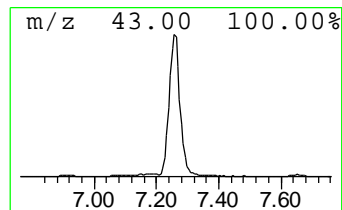
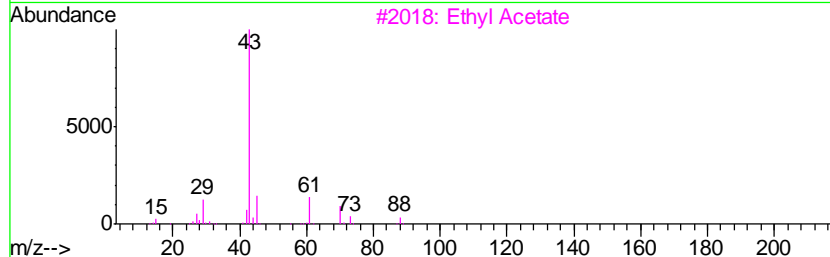
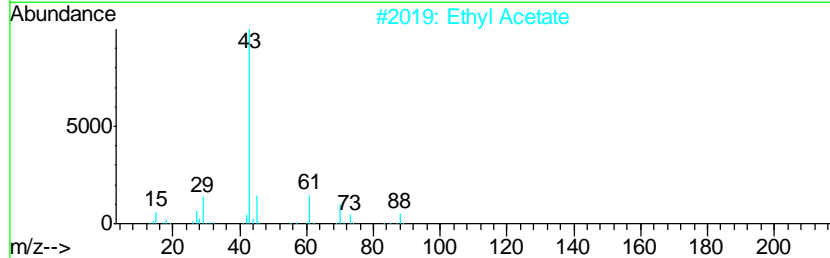
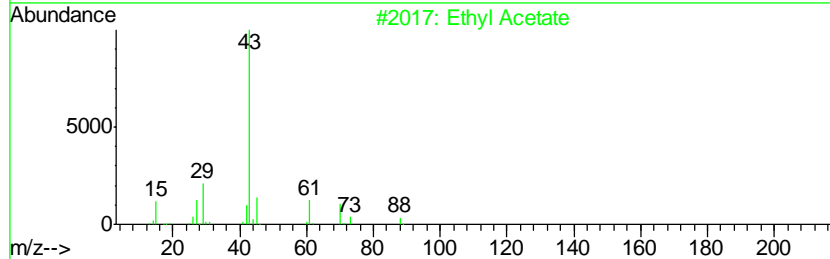
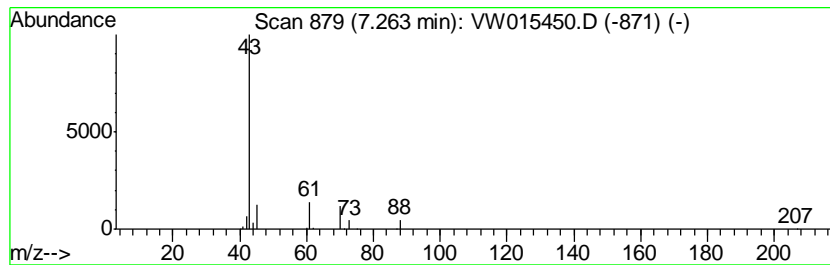
Quant Method : Z:\VOASRV\HPCHEM1\MSVOA_W\METHOD\SOM2WLM050420S.M
 Quant Title : VOC Analysis

TIC Library : C:\DATABASE\NIST11.L
 TIC Integration Parameters: LSCINT.P

 Peak Number 1 Ethyl Acetate Concentration Rank 5

R.T.	EstConc	Area	Relative to ISTD	R.T.
7.26	2.62 ug/L	97769	1,4-Difluorobenzene	8.84

Hit#	of	Tentative ID	MW	MolForm	CAS#	Qual
1	5	Ethyl Acetate	88	C4H8O2	000141-78-6	86
2		Ethyl Acetate	88	C4H8O2	000141-78-6	86
3		Ethyl Acetate	88	C4H8O2	000141-78-6	86
4		Ethyl Acetate	88	C4H8O2	000141-78-6	78
5		CH3C(O)CH2CH2OH	88	C4H8O2	000590-90-9	59



Data Path : Z:\VOASRV\HPCHEM1\MSVOA_W\DATA\VW052220\
Data File : VW015450.D
Acq On : 22 May 2020 14:19
Operator : SY/VA
Sample : L2753-02
Misc : 5.27G/10.0mL/MSVOA_W/SOIL
ALS Vial : 6 Sample Multiplier: 1

Instrument :
MSVOA_W
ClientSampleId :
GAXE3

Quant Method : Z:\VOASRV\HPCHEM1\MSVOA_W\METHOD\SOM2WLM050420S.M
Quant Title : VOC Analysis

TIC Library : C:\DATABASE\NIST11.L
TIC Integration Parameters: LSCINT.P

TIC Top Hit name	RT	EstConc	Units	Response	--Internal Standard--			
					#	RT	Resp	Conc
Ethyl Acetate	7.26	2.6	ug/L	97769	1	8.84	933665	25.0