

Data Path : W:\HPCHEM1\MSVOA W\DATA\VW052418\
 Data File : VW002838.D
 Acq On : 24 May 2018 11:03
 Operator : JC/SY
 Sample : VW0524SBL01
 Misc : 5.00G/10ML/MSVOA W/SOIL
 ALS Vial : 1 Sample Multiplier: 1

Quant Time: May 25 09:10:32 2018
 Quant Method : W:\HPCHEM1\MSVOA_W\METHOD\SOM2WLM052218S.M
 Quant Title : VOC Analysis
 QLast Update : Fri May 25 07:55:38 2018
 Response via : Initial Calibration

Internal Standards	R.T.	QIon	Response	Conc	Units	Dev(Min)
1) 1,4-Difluorobenzene	8.84	114	308827	25.00	ug/L	0.00
28) Chlorobenzene-d5	11.64	117	293444	25.00	ug/L	0.00
60) 1,4-Dichlorobenzene-d4	13.57	152	143080	25.00	ug/L	0.00

System Monitoring Compounds

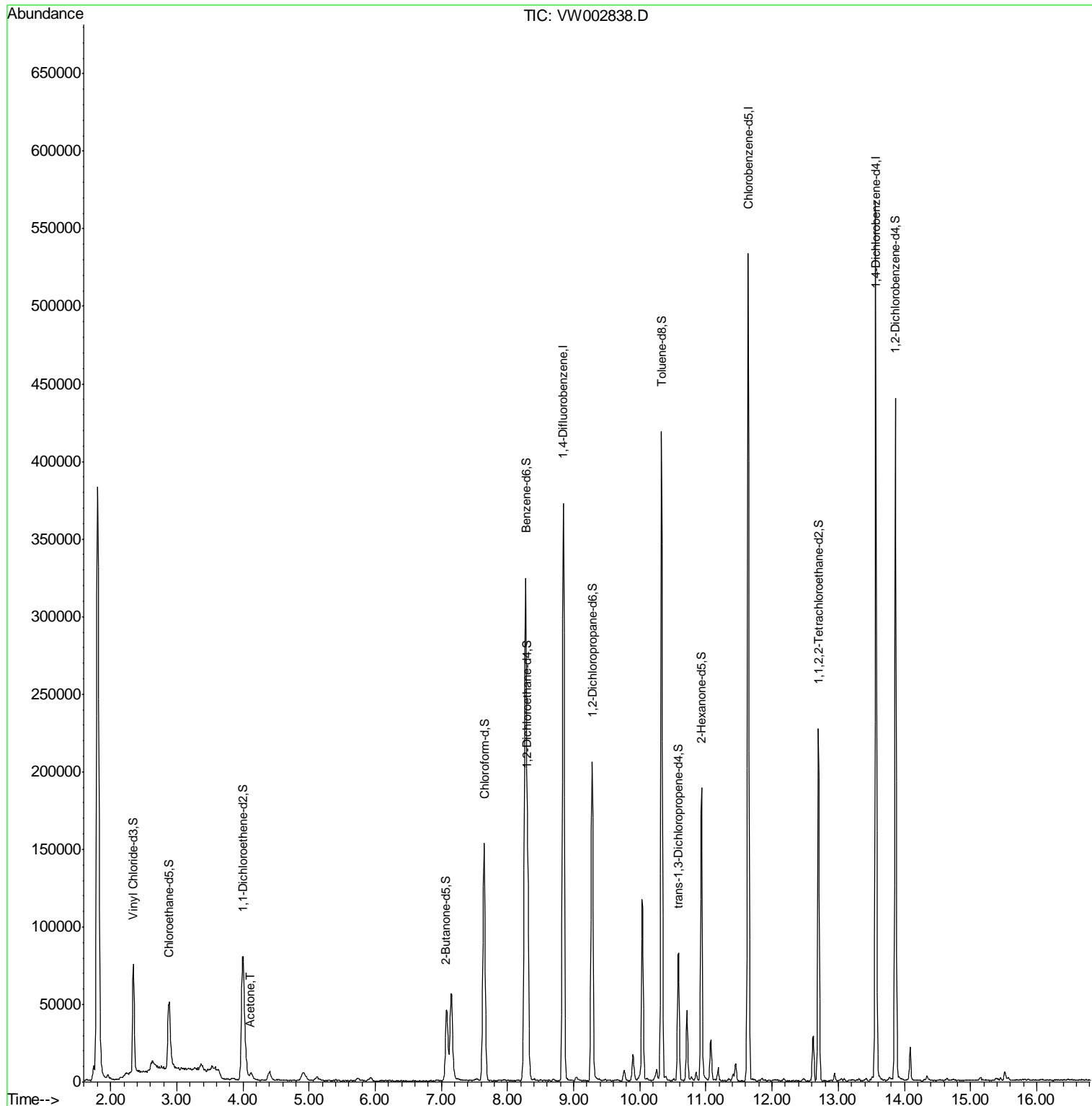
4) Vinyl Chloride-d3	2.34	65	75061	18.95	ug/L	0.00
Spiked Amount	25.000	Range	30 - 150	Recovery	=	75.80%
7) Chloroethane-d5	2.89	69	64740	18.27	ug/L	0.00
Spiked Amount	25.000	Range	30 - 150	Recovery	=	73.08%
10) 1,1-Dichloroethene-d2	4.00	63	97817	14.10	ug/L	0.00
Spiked Amount	25.000	Range	45 - 110	Recovery	=	56.40%
20) 2-Butanone-d5	7.07	46	78108	48.34	ug/L	0.00
Spiked Amount	50.000	Range	20 - 135	Recovery	=	96.68%
24) Chloroform-d	7.65	84	150847	20.38	ug/L	0.00
Spiked Amount	25.000	Range	40 - 150	Recovery	=	81.52%
26) 1,2-Dichloroethane-d4	8.31	65	95488	21.36	ug/L	0.00
Spiked Amount	25.000	Range	70 - 130	Recovery	=	85.44%
29) Benzene-d6	8.27	84	283604	20.32	ug/L	0.00
Spiked Amount	25.000	Range	20 - 135	Recovery	=	81.28%
33) 1,2-Dichloropropane-d6	9.28	67	92882	20.59	ug/L	0.00
Spiked Amount	25.000	Range	70 - 120	Recovery	=	82.36%
37) Toluene-d8	10.33	98	270051	19.61	ug/L	0.00
Spiked Amount	25.000	Range	30 - 130	Recovery	=	78.44%
38) trans-1,3-Dichloropropene-	10.59	79	42522	19.71	ug/L	0.00
Spiked Amount	25.000	Range	30 - 135	Recovery	=	78.84%
39) 2-Hexanone-d5	10.93	63	57758	45.13	ug/L	0.00
Spiked Amount	50.000	Range	20 - 135	Recovery	=	90.26%
48) 1,1,2,2-Tetrachloroethane-	12.70	84	105083	21.26	ug/L	0.00
Spiked Amount	25.000	Range	45 - 120	Recovery	=	85.04%
61) 1,2-Dichlorobenzene-d4	13.87	152	113935	21.66	ug/L	0.00
Spiked Amount	25.000	Range	75 - 120	Recovery	=	86.64%

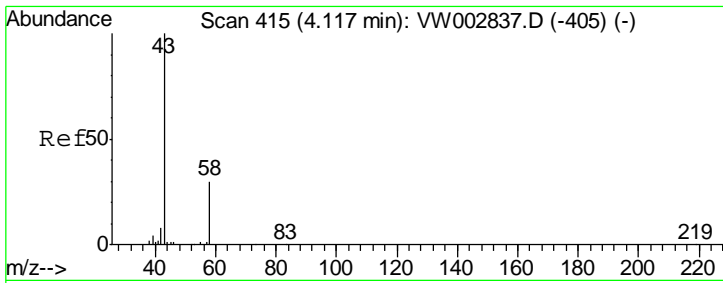
Target Compounds	R.T.	QIon	Response	Conc	Units	Ovalue
13) Acetone	4.12	43	5830	4.08	ug/L	97

(#) = qualifier out of range (m) = manual integration (+) = signals summed

Data Path : W:\HPCHEM1\MSVOA W\DATA\VW052418\
 Data File : VW002838.D
 Acq On : 24 May 2018 11:03
 Operator : JC/SY
 Sample : VW0524SBL01
 Misc : 5.00G/10ML/MSVOA W/SOIL
 ALS Vial : 1 Sample Multiplier: 1

Quant Time: May 25 09:10:32 2018
 Quant Method : W:\HPCHEM1\MSVOA_W\METHOD\SOM2WLM052218S.M
 Quant Title : VOC Analysis
 QLast Update : Fri May 25 07:55:38 2018
 Response via : Initial Calibration





#13
 Acetone
 Concen: 4.08 ug/L
 RT: 4.12 min Scan# 415
 Delta R.T. -0.00 min
 Lab File: VW002838.D
 Acq: 24 May 2018 11:03

Tot Ion	Resp	Lower	Upper
43	5830		
58	28.4	0.0	59.8

