

Data Path : Z:\voasrv\HPCHEM1\MSVOA\_W\Data\VW052424\  
 Data File : VW028792.D  
 Acq On : 25 May 2024 16:28  
 Operator : SY/MD  
 Sample : P2571-04RE  
 Mi sc : 4.25g/10mL/MSVOA\_W/SOIL/B  
 ALS Vial : 20 Sample Multiplier: 1

Instrument :  
 MSVOA\_W  
 ClientSampleId :

Quant Time: May 27 01:14:31 2024  
 Quant Method : Z:\voasrv\HPCHEM1\MSVOA\_W\Method\SFAMWLM050224SMA.M  
 Quant Title : SFAM01.0  
 QLast Update : Mon May 27 01:09:16 2024  
 Response via : Initial Calibration

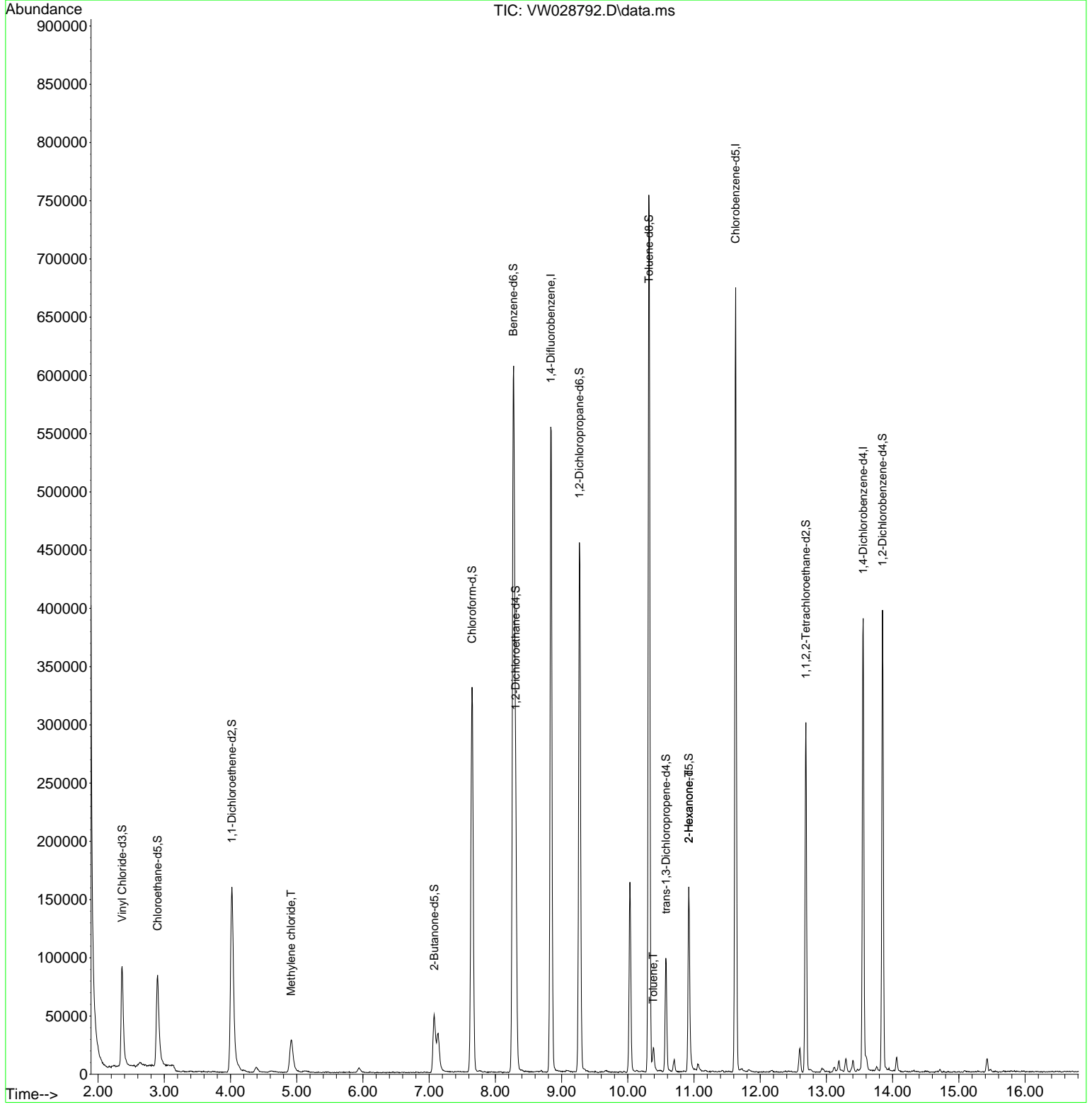
Compound	R. T.	QI on	Response	Conc	Units	Dev(Min)
<b>Internal Standards</b>						
1) 1,4-Difluorobenzene	8.837	114	454408	25.000	ug/L	0.00
28) Chlorobenzene-d5	11.629	117	353595	25.000	ug/L	0.00
58) 1,4-Dichlorobenzene-d4	13.556	152	99359	25.000	ug/L	0.00
<b>System Monitoring Compounds</b>						
4) Vinyl Chloride-d3	2.363	65	131865	15.282	ug/L	0.00
Spike Amount	25.000	Range	30 - 150	Recovery	=	61.120%
7) Chloroethane-d5	2.899	69	126440	19.137	ug/L	0.00
Spike Amount	25.000	Range	30 - 150	Recovery	=	76.560%
11) 1,1-Dichloroethane-d2	4.021	65	62002	17.198	ug/L	0.00
Spike Amount	25.000	Range	45 - 110	Recovery	=	68.800%
21) 2-Butanone-d5	7.075	46	81650	36.269	ug/L	0.00
Spike Amount	50.000	Range	20 - 135	Recovery	=	72.540%
24) Chloroform-d	7.648	84	337695	23.783	ug/L	0.00
Spike Amount	25.000	Range	40 - 150	Recovery	=	95.120%
26) 1,2-Dichloroethane-d4	8.307	65	179537	22.086	ug/L	0.00
Spike Amount	25.000	Range	70 - 130	Recovery	=	88.360%
32) Benzene-d6	8.270	84	615635	26.096	ug/L	0.00
Spike Amount	25.000	Range	20 - 135	Recovery	=	104.400%
36) 1,2-Dichloropropane-d6	9.270	67	210752	29.688	ug/L	0.00
Spike Amount	25.000	Range	70 - 120	Recovery	=	118.760%
41) Toluene-d8	10.319	98	484336	23.183	ug/L	0.00
Spike Amount	25.000	Range	30 - 130	Recovery	=	92.720%
43) trans-1,3-Dichloropropene	10.575	79	53680	18.797	ug/L	0.00
Spike Amount	25.000	Range	30 - 135	Recovery	=	75.200%
47) 2-Hexanone-d5	10.922	63	50225	41.021	ug/L	0.00
Spike Amount	50.000	Range	20 - 135	Recovery	=	82.040%
56) 1,1,2,2-Tetrachloroethane	12.690	84	144884	24.339	ug/L	0.00
Spike Amount	25.000	Range	45 - 120	Recovery	=	97.360%
66) 1,2-Dichlorobenzene-d4	13.848	152	97962	25.868	ug/L	0.00
Spike Amount	25.000	Range	75 - 120	Recovery	=	103.480%
<b>Target Compounds</b>						
16) Methylene chloride	4.917	84	24894	3.542	ug/L	90
42) Toluene	10.386	91	12616	0.533	ug/L	88
48) 2-Hexanone	10.922	43	9627	3.353	ug/L #	68

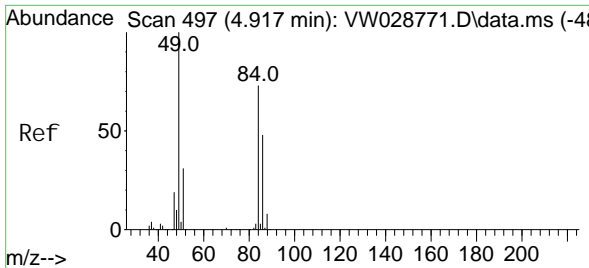
(#) = qualifier out of range (m) = manual integration (+) = signals summed

Data Path : Z:\voasrv\HPCHEM1\MSVOA\_W\Data\VW052424\  
 Data File : VW028792.D  
 Acq On : 25 May 2024 16:28  
 Operator : SY/MD  
 Sample : P2571-04RE  
 Misc : 4.25g/10mL/MSVOA\_W/SOIL/B  
 ALS Vial : 20 Sample Multiplier: 1

**Instrument :**  
 MSVOA\_W  
**ClientSampleId :**

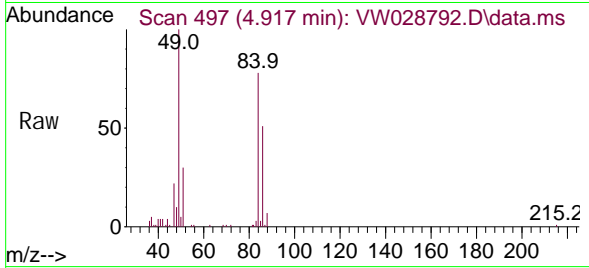
Quant Time: May 27 01:14:31 2024  
 Quant Method : Z:\voasrv\HPCHEM1\MSVOA\_W\Method\SFAMWLM050224SMA.M  
 Quant Title : SFAM01.0  
 QLast Update : Mon May 27 01:09:16 2024  
 Response via : Initial Calibration



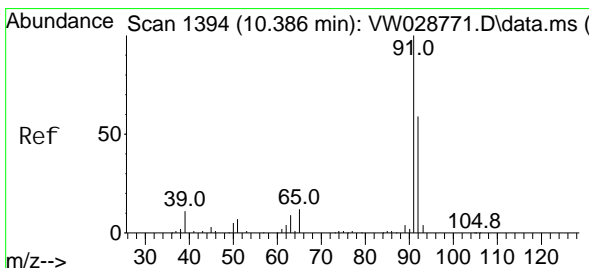
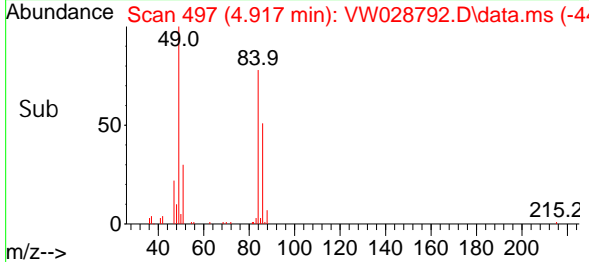
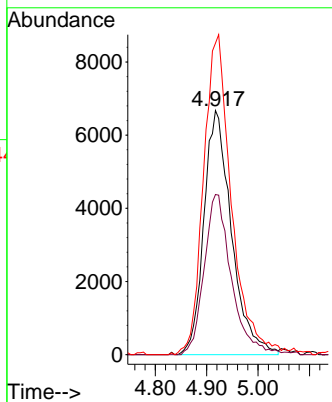


#16  
 Methylene chloride  
 Concen: 3.542 ug/L  
 RT: 4.917 min Scan# 49  
 Delta R.T. 0.000 min  
 Lab File: VW028792.D  
 Acq: 25 May 2024 16:28

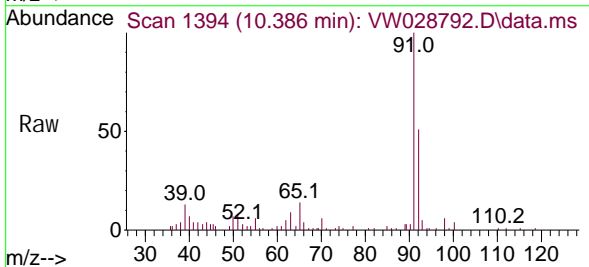
Instrument :  
 MSVOA\_W  
 ClientSampleId :



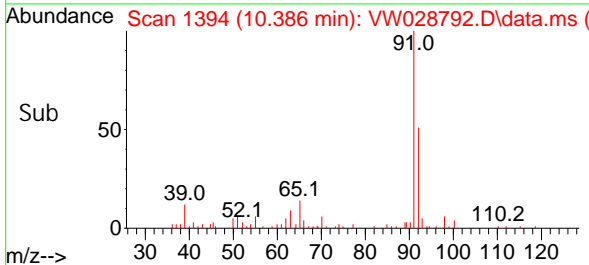
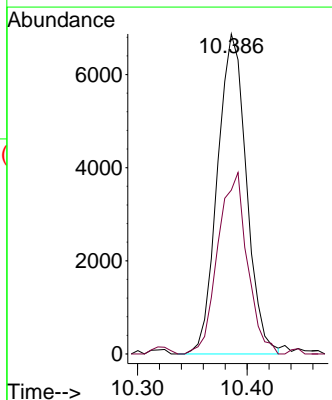
Tgt Ion: 84 Resp: 24894  
 Ion Ratio Lower Upper  
 84 100  
 86 65.6 44.4 82.4  
 49 127.5 100.2 186.2

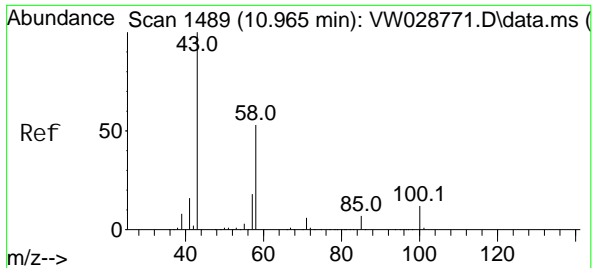


#42  
 Toluene  
 Concen: 0.533 ug/L  
 RT: 10.386 min Scan# 1394  
 Delta R.T. 0.000 min  
 Lab File: VW028792.D  
 Acq: 25 May 2024 16:28



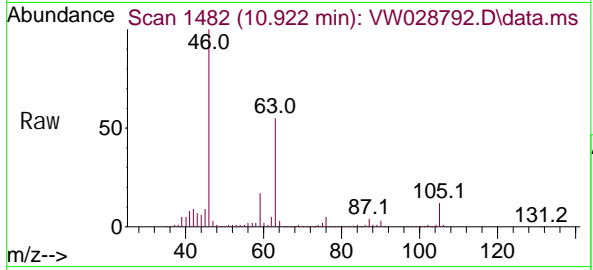
Tgt Ion: 91 Resp: 12616  
 Ion Ratio Lower Upper  
 91 100  
 92 51.2 42.5 78.9





#48  
 2-Hexanone  
 Concen: 3.353 ug/L  
 RT: 10.922 min Scan# 14  
 Delta R.T. -0.043 min  
 Lab File: VW028792.D  
 Acq: 25 May 2024 16:28

Instrument :  
 MSVOA\_W  
 ClientSampleId :



Tgt Ion: 43 Resp: 9627

Ion	Ratio	Lower	Upper
43	100		
58	22.6	41.0	61.4#
57	25.0	14.8	22.2#
100	3.4	8.6	12.8#

