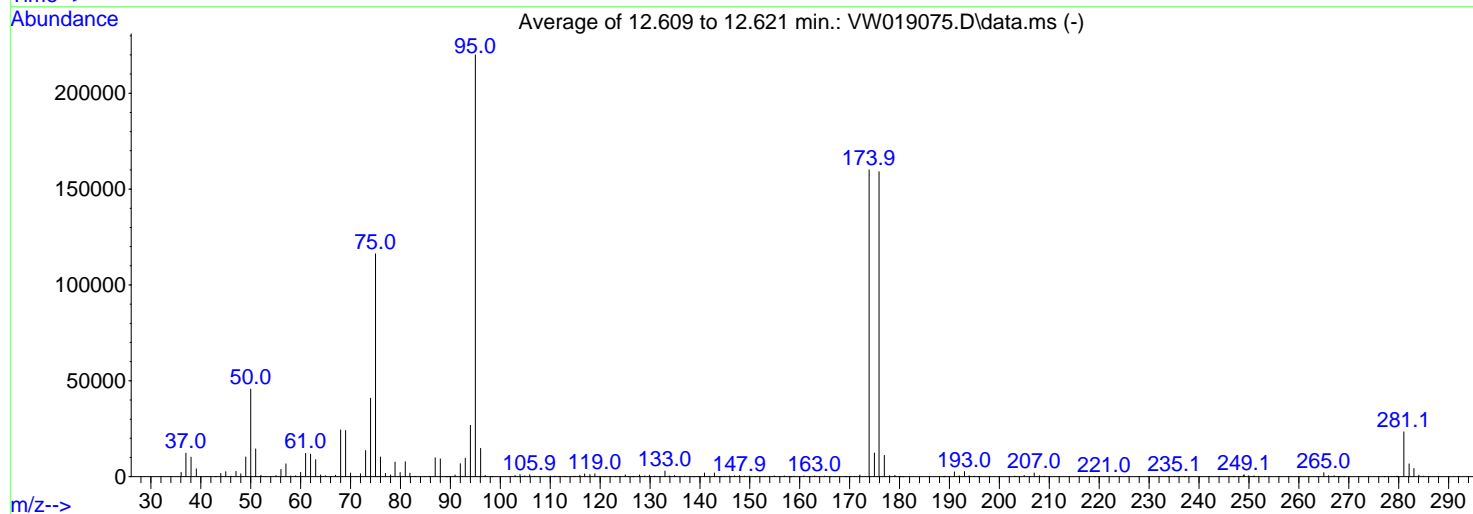
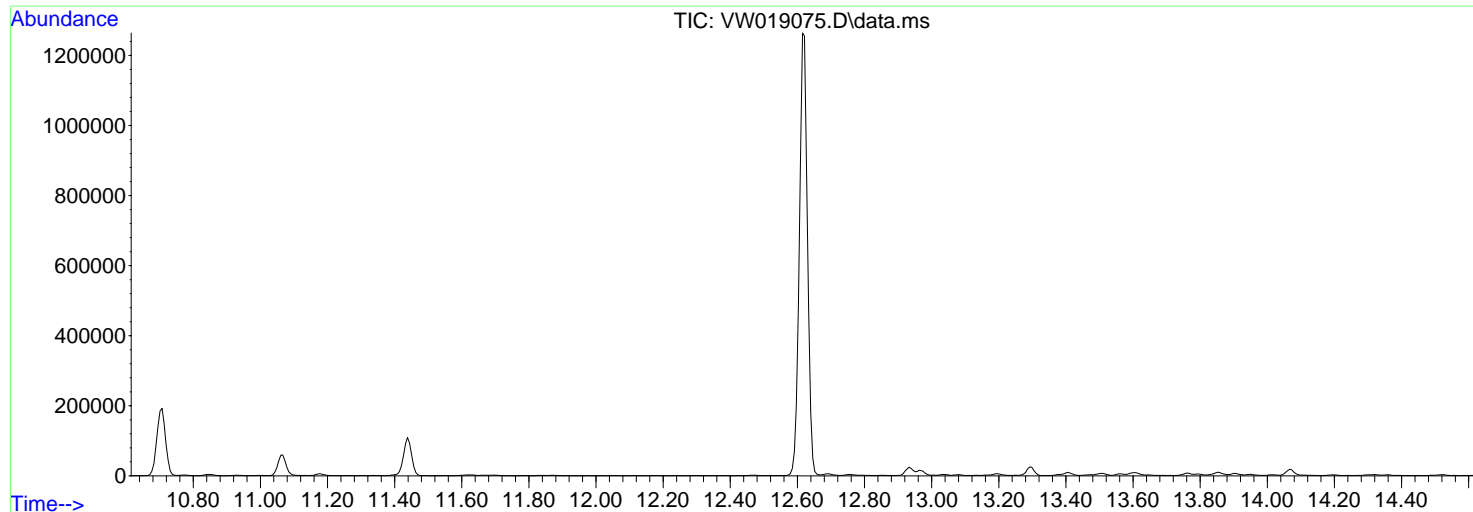


Data Path : Z:\voasrv\HPCHEM1\MSVOA\_W\Data\VW052521\  
 Data File : VW019075.D  
 Acq On : 25 May 2021 11:14  
 Operator : SY/VA  
 Sample : BFB  
 Misc : 5.00G/5ML/MSVOA\_W/SOIL  
 ALS Vial : 1 Sample Multiplier: 1

Instrument :  
 MSVOA\_W  
 ClientSampleId :  
 BFB

Integration File: RTEINT.P

Method : Z:\voasrv\HPCHEM1\MSVOA\_W\Method\82W052421S.M  
 Title : SW846 8260  
 Last Update : Mon May 24 14:01:57 2021



AutoFind: Scans 1756, 1757, 1758; Background Corrected with Scan 1748

| Target Mass | Rel. to Mass | Lower Limit% | Upper Limit% | Rel. Abn% | Raw Abn | Result Pass/Fail |
|-------------|--------------|--------------|--------------|-----------|---------|------------------|
| 50          | 95           | 15           | 40           | 20.8      | 45701   | PASS             |
| 75          | 95           | 30           | 60           | 52.8      | 116277  | PASS             |
| 95          | 95           | 100          | 100          | 100.0     | 220053  | PASS             |
| 96          | 95           | 5            | 9            | 6.7       | 14801   | PASS             |
| 173         | 174          | 0.00         | 2            | 0.0       | 0       | PASS             |
| 174         | 95           | 50           | 100          | 72.7      | 159987  | PASS             |
| 175         | 174          | 5            | 9            | 7.7       | 12378   | PASS             |
| 176         | 174          | 95           | 101          | 99.5      | 159141  | PASS             |
| 177         | 176          | 5            | 9            | 7.0       | 11072   | PASS             |