

Data Path : Z:\voasrv\HPCHEM1\MSVOA\_W\Data\VW052522\  
 Data File : VW023345.D  
 Acq On : 26 May 2022 01:52  
 Operator : SY/VA  
 Sample : VIBLK485  
 Misc : 5.00g/10mL/MSVOA\_W/SOIL  
 ALS Vial : 11 Sample Multiplier: 1

Instrument :  
 MSVOA\_W  
 ClientSampleId :  
 VIBLK485

Integration Parameters: LSCINT.P

Integrator: RTE  
 Smoothing : OFF  
 Sampling : 1  
 Start Thrs : 0.2  
 Stop Thrs : 0

Filtering: 5  
 Min Area: 0 % of largest Peak  
 Max Peaks: 100  
 Peak Location: TOP

If leading or trailing edge < 100 prefer < Baseline drop else tangent >  
 Peak separation: 5

Method : Z:\voasrv\HPCHEM1\MSVOA\_W\Method\SFAMWLM050222SMA.M  
 Title : SFAM01.0

Signal : TIC: VW023345.D\data.ms

peak #	R.T. min	first scan	max scan	last scan	PK TY	peak height	corr. area	corr. % max.	% of total
1	1.964	8	10	14	rVB2	2130	2502	0.14%	0.015%
2	2.086	28	30	32	rVB3	1104	1013	0.06%	0.006%
3	2.160	36	42	47	rBV	8015	17873	1.00%	0.107%
4	2.233	47	54	56	rBV7	4793	10956	0.61%	0.066%
5	2.294	62	64	65	rBV2	2250	1901	0.11%	0.011%
6	2.355	66	74	85	rVV	128098	236128	13.22%	1.417%
7	2.458	89	91	92	rBV2	2168	1579	0.09%	0.009%
8	2.629	114	119	129	rBV2	12047	32318	1.81%	0.194%
9	2.885	155	161	168	rBV	63463	134523	7.53%	0.808%
10	3.239	218	219	223	rVB4	1167	979	0.05%	0.006%
11	3.293	225	228	230	rBV4	986	772	0.04%	0.005%
12	3.379	235	242	249	rBV5	4074	8768	0.49%	0.053%
13	3.452	252	254	256	rVB3	1236	902	0.05%	0.005%
14	3.489	256	260	261	rBV4	849	877	0.05%	0.005%
15	3.598	276	278	281	rVB3	1075	1154	0.06%	0.007%
16	3.787	307	309	312	rVB4	1125	740	0.04%	0.004%
17	3.830	312	316	317	rBV3	727	946	0.05%	0.006%
18	3.873	320	323	329	rVB8	1259	2238	0.13%	0.013%
19	4.019	335	347	361	rBV	146526	450805	25.24%	2.706%
20	4.123	361	364	371	rVV9	2983	6134	0.34%	0.037%
21	4.196	371	376	378	rVV6	1673	2900	0.16%	0.017%
22	4.232	381	382	385	rVB3	1892	1419	0.08%	0.009%
23	4.299	390	393	396	rBV4	938	1087	0.06%	0.007%
24	4.403	399	410	417	rBV3	5294	18275	1.02%	0.110%
25	4.568	435	437	439	rVB3	1151	873	0.05%	0.005%
26	4.586	439	440	442	rBV2	920	676	0.04%	0.004%
27	4.635	446	448	451	rVB4	803	820	0.05%	0.005%
28	4.671	451	454	456	rBV4	906	858	0.05%	0.005%
29	4.720	460	462	465	rVB4	1114	1194	0.07%	0.007%
30	4.744	465	466	469	rVB2	1216	845	0.05%	0.005%
31	4.799	469	475	478	rBV7	1408	1890	0.11%	0.011%
32	4.842	478	482	484	rBV4	1124	1393	0.08%	0.008%
33	4.915	484	494	509	rBV3	16404	60929	3.41%	0.366%
34	5.043	512	515	516	rBV2	933	934	0.05%	0.006%
35	5.068	517	519	521	rBV2	982	984	0.06%	0.006%
36	5.110	521	526	528	rBV5	3939	6542	0.37%	0.039%

Data Path : Z:\voasrv\HPCHEM1\MSVOA\_W\Data\VW052522\  
 Data File : VW023345.D  
 Acq On : 26 May 2022 01:52  
 Operator : SY/VA  
 Sample : VIBLK485  
 Misc : 5.00g/10mL/MSVOA\_W/SOIL  
 ALS Vial : 11 Sample Multiplier: 1

Instrument :  
 MSVOA\_W  
 ClientSampleId :  
 VIBLK485

Integration Parameters: LSCINT.P

Integrator: RTE  
 Smoothing : OFF  
 Sampling : 1  
 Start Thrs: 0.2  
 Stop Thrs : 0

Filtering: 5  
 Min Area: 0 % of largest Peak  
 Max Peaks: 100  
 Peak Location: TOP

If leading or trailing edge < 100 prefer < Baseline drop else tangent >  
 Peak separation: 5

Method : Z:\voasrv\HPCHEM1\MSVOA\_W\Method\SFAMWLM050222SMA.M  
 Title : SFAM01.0

37	5.220	542	544	546	rVB2	1106	915	0.05%	0.005%
38	5.342	561	564	570	rVB6	1229	2521	0.14%	0.015%
39	5.421	570	577	578	rBV6	1331	2569	0.14%	0.015%
40	5.458	581	583	586	rVB4	1242	1272	0.07%	0.008%
41	5.494	586	589	590	rBV3	1470	1466	0.08%	0.009%
42	5.574	599	602	606	rVB6	1129	1586	0.09%	0.010%
43	5.647	612	614	616	rVB4	1202	940	0.05%	0.006%
44	5.677	616	619	620	rBV3	751	754	0.04%	0.005%
45	5.744	620	630	632	rBV10	2858	7475	0.42%	0.045%
46	5.769	632	634	637	rVV4	2389	2534	0.14%	0.015%
47	5.793	637	638	641	rVB3	1361	1032	0.06%	0.006%
48	5.866	648	650	651	rBV3	1521	750	0.04%	0.005%
49	5.933	651	661	671	rBV3	8607	28047	1.57%	0.168%
50	6.025	675	676	679	rVB3	1111	876	0.05%	0.005%
51	6.073	682	684	690	rBV7	962	1627	0.09%	0.010%
52	6.116	690	691	696	rVB4	630	1029	0.06%	0.006%
53	6.171	698	700	702	rVB3	945	799	0.04%	0.005%
54	6.195	702	704	707	rVB4	1031	971	0.05%	0.006%
55	6.232	707	710	716	rVB7	1254	2769	0.16%	0.017%
56	6.293	716	720	721	rBV4	1353	1773	0.10%	0.011%
57	6.348	726	729	731	rBV4	1267	2064	0.12%	0.012%
58	6.409	737	739	740	rBV2	1178	852	0.05%	0.005%
59	6.427	740	742	746	rVB5	1214	1339	0.07%	0.008%
60	6.476	748	750	752	rBV3	1609	1161	0.07%	0.007%
61	6.567	763	765	769	rVB5	1606	1475	0.08%	0.009%
62	6.683	780	784	787	rVV5	1754	2561	0.14%	0.015%
63	6.744	792	794	795	rVV2	1005	866	0.05%	0.005%
64	6.768	795	798	799	rVB3	1703	1711	0.10%	0.010%
65	6.787	799	801	803	rBV3	2176	1688	0.09%	0.010%
66	6.854	808	812	816	rVB7	1482	2931	0.16%	0.018%
67	6.896	816	819	821	rBV3	2104	2919	0.16%	0.018%
68	7.073	841	848	854	rVV	41366	117779	6.59%	0.707%
69	7.140	854	859	870	rVB	47848	136115	7.62%	0.817%
70	7.396	899	901	904	rBV4	2030	2586	0.14%	0.016%
71	7.585	930	932	933	rBV2	2914	1516	0.08%	0.009%
72	7.646	933	942	954	rBV	243216	606483	33.96%	3.641%
73	7.732	954	956	958	rVV3	2824	2125	0.12%	0.013%
74	7.896	981	983	985	rBV3	3240	3105	0.17%	0.019%
75	8.085	1012	1014	1017	rBV4	3786	3592	0.20%	0.022%
76	8.274	1033	1045	1061	rBV3	527447	1738896	97.36%	10.439%

Data Path : Z:\voasrv\HPCHEM1\MSVOA\_W\Data\VW052522\  
 Data File : VW023345.D  
 Acq On : 26 May 2022 01:52  
 Operator : SY/VA  
 Sample : VIBLK485  
 Misc : 5.00g/10mL/MSVOA\_W/SOIL  
 ALS Vial : 11 Sample Multiplier: 1

Instrument :  
 MSVOA\_W  
 ClientSampleId :  
 VIBLK485

Integration Parameters: LSCINT.P

Integrator: RTE  
 Smoothing : OFF Filtering: 5  
 Sampling : 1 Min Area: 0 % of largest Peak  
 Start Thrs: 0.2 Max Peaks: 100  
 Stop Thrs : 0 Peak Location: TOP

If leading or trailing edge < 100 prefer < Baseline drop else tangent >  
 Peak separation: 5

Method : Z:\voasrv\HPCHEM1\MSVOA\_W\Method\SFAMWLM050222SMA.M  
 Title : SFAM01.0

77	8.841	1131	1138	1146	rBV	462503	902846	50.55%	5.420%
78	9.274	1202	1209	1216	rBV	317430	641538	35.92%	3.851%
79	10.036	1329	1334	1341	rBV	164679	295290	16.53%	1.773%
80	10.323	1375	1381	1389	rBV	736714	1294218	72.46%	7.769%
81	10.579	1419	1423	1430	rVB	116860	192581	10.78%	1.156%
82	10.701	1438	1443	1449	rVB	141592	249465	13.97%	1.498%
83	10.926	1475	1480	1484	rBV	164585	279050	15.62%	1.675%
84	11.066	1499	1503	1507	rVB	60679	92761	5.19%	0.557%
85	11.627	1590	1595	1604	rVB	705420	1227028	68.70%	7.366%
86	12.615	1747	1757	1758	rBV2	835498	1709529	95.72%	10.262%
87	13.554	1906	1911	1924	rVB	957055	1785994	100.00%	10.721%
88	13.737	1934	1941	1954	rVB4	446382	1685147	94.35%	10.116%
89	13.846	1954	1959	1967	rBV	725769	1293481	72.42%	7.765%
90	14.834	2117	2121	2128	rBV4	53921	122880	6.88%	0.738%
91	15.322	2196	2201	2208	rBV	87168	159606	8.94%	0.958%
92	15.547	2234	2238	2242	rBV	42053	56986	3.19%	0.342%
93	15.718	2264	2266	2272	rVB2	44615	58914	3.30%	0.354%
94	16.084	2323	2326	2330	rVB5	21865	28926	1.62%	0.174%
95	16.133	2331	2334	2337	rBV4	16983	23911	1.34%	0.144%
96	16.212	2343	2347	2352	rVB3	38551	66290	3.71%	0.398%
97	16.273	2352	2357	2365	rBV	146845	273374	15.31%	1.641%
98	16.486	2385	2392	2396	rBV2	118438	250999	14.05%	1.507%
99	16.608	2405	2412	2416	rBV4	63546	159101	8.91%	0.955%
100	16.663	2418	2421	2427	rVB4	52319	100078	5.60%	0.601%

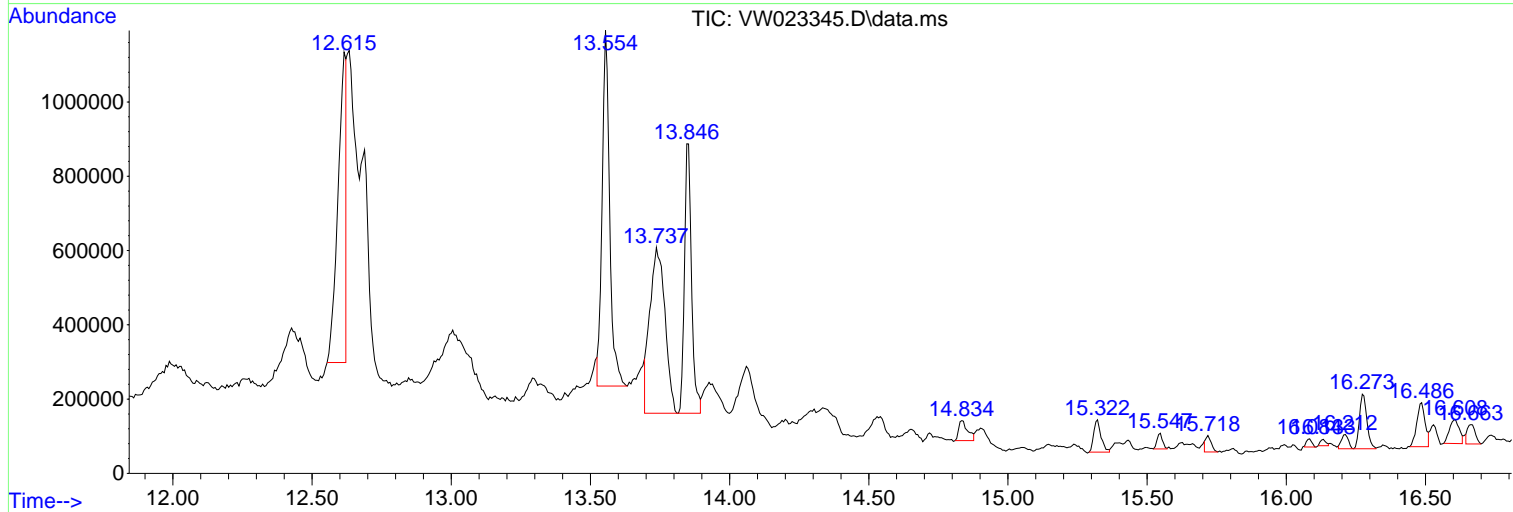
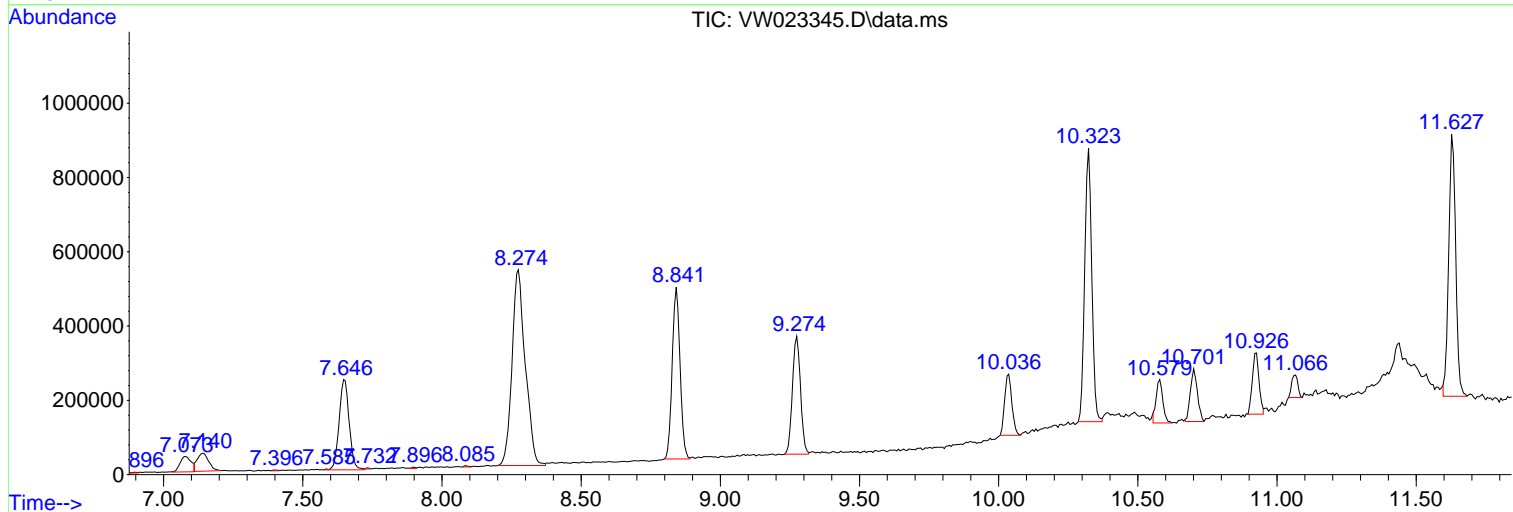
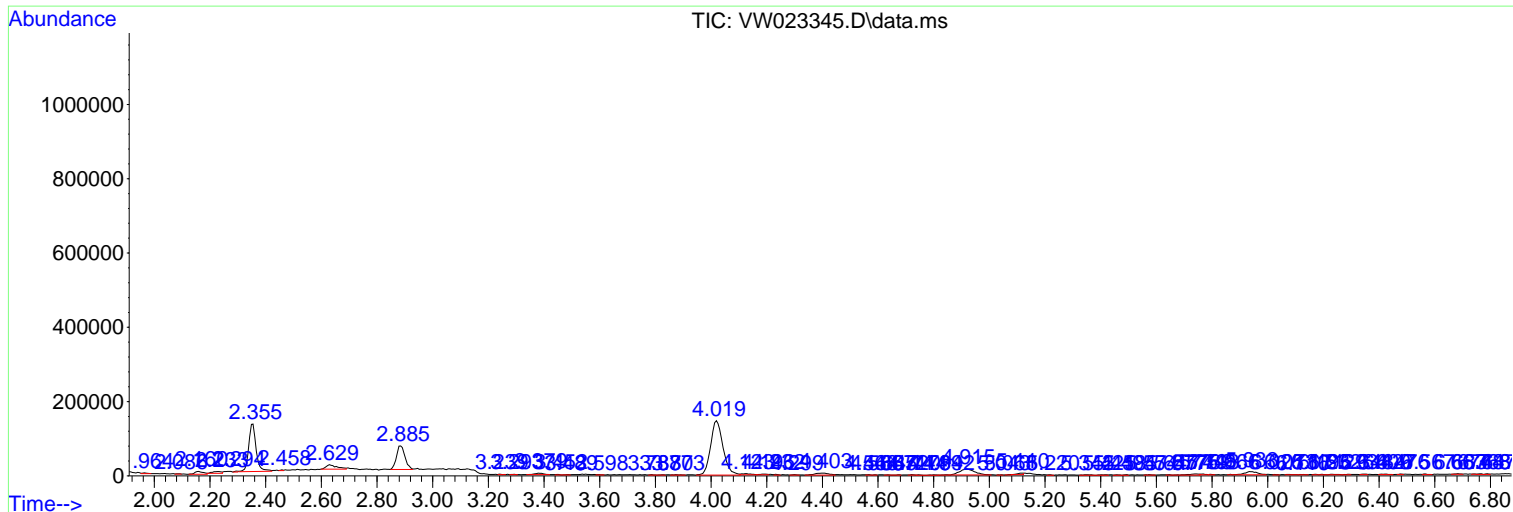
Sum of corrected areas: 16658189

Data Path : Z:\voasrv\HPCHEM1\MSVOA\_W\Data\VW052522\  
 Data File : VW023345.D  
 Acq On : 26 May 2022 01:52  
 Operator : SY/VA  
 Sample : VIBLK485  
 Misc : 5.00g/10mL/MSVOA\_W/SOIL  
 ALS Vial : 11 Sample Multiplier: 1

Instrument :  
 MSVOA\_W  
 ClientSampleId :  
 VIBLK485

Quant Method : Z:\voasrv\HPCHEM1\MSVOA\_W\Method\SFAMWLM050222SMA.M  
 Quant Title : SFAM01.0

TIC Library : C:\Database\NIST0.L  
 TIC Integration Parameters: LSCINT.P



Data Path : Z:\voasrv\HPCHEM1\MSVOA\_W\Data\VW052522\  
 Data File : VW023345.D  
 Acq On : 26 May 2022 01:52  
 Operator : SY/VA  
 Sample : VIBLK485  
 Misc : 5.00g/10mL/MSVOA\_W/SOIL  
 ALS Vial : 11 Sample Multiplier: 1

Instrument :  
 MSVOA\_W  
 ClientSampleId :  
 VIBLK485

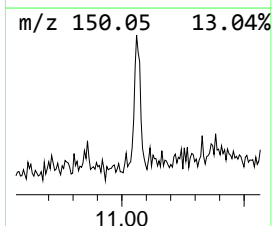
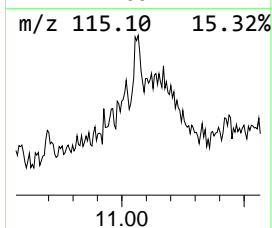
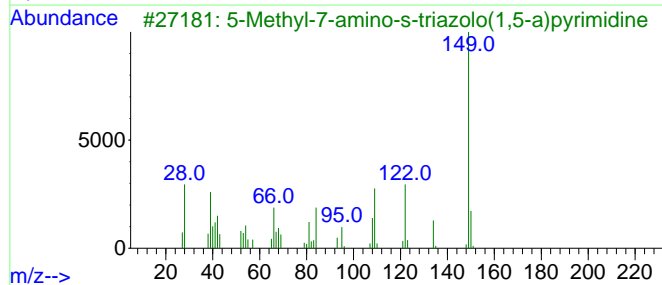
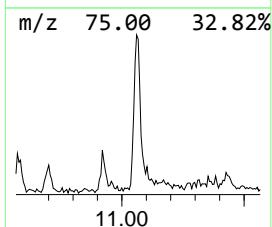
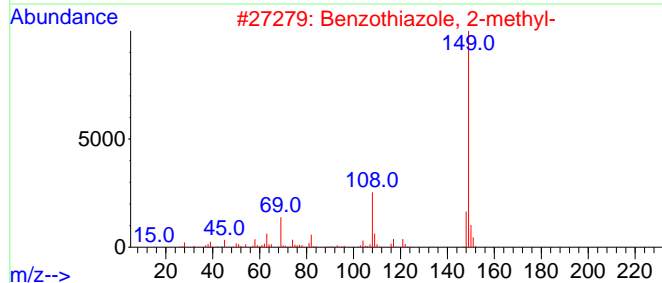
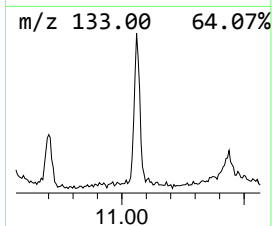
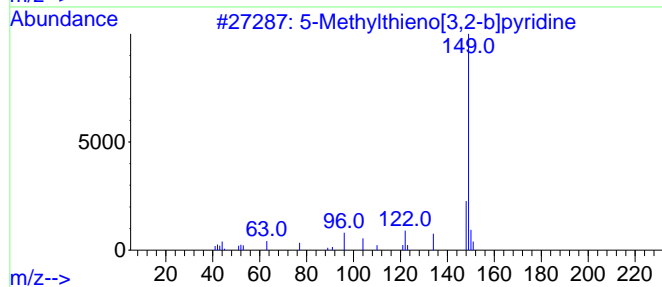
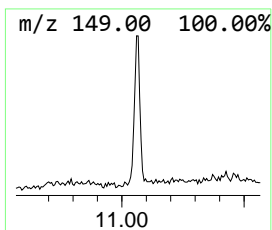
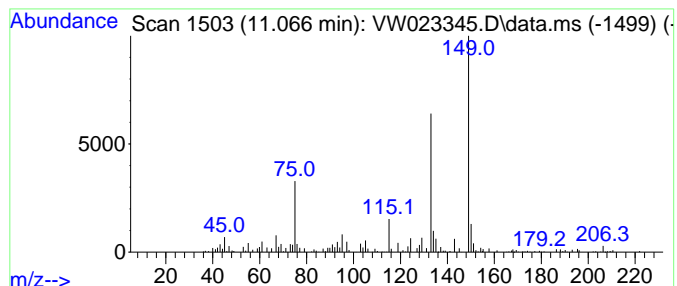
Quant Method : Z:\voasrv\HPCHEM1\MSVOA\_W\Method\SFAMWLM050222SMA.M  
 Quant Title : SFAM01.0

TIC Library : C:\Database\NIST0.L  
 TIC Integration Parameters: LSCINT.P

\*\*\*\*\*  
 Peak Number 5 unknown-01 Concentration Rank 10

R.T.	EstConc	Area	Relative to ISTD	R.T.
11.067	1.89 ug/L	92761	Chlorobenzene-d5	11.627

Hit#	of	5	Tentative ID	MW	MolForm	CAS#	Qual
1			5-Methylthieno[3,2-b]pyridine	149	C8H7NS	001759-29-1	46
2			Benzothiazole, 2-methyl-	149	C8H7NS	000120-75-2	46
3			5-Methyl-7-amino-s-triazolo(1,5-...	149	C6H7N5	033376-96-4	43
4			Phthalic acid, ethyl 2-(2-nitrop...	343	C18H17NO6	1000377-99-1	43
5			7-Methylthieno[3,2-b]pyridine	149	C8H7NS	013362-83-9	43



Data Path : Z:\voasrv\HPCHEM1\MSVOA\_W\Data\VW052522\  
 Data File : VW023345.D  
 Acq On : 26 May 2022 01:52  
 Operator : SY/VA  
 Sample : VIBLK485  
 Misc : 5.00g/10mL/MSVOA\_W/SOIL  
 ALS Vial : 11 Sample Multiplier: 1

Instrument :  
 MSVOA\_W  
 ClientSampleId :  
 VIBLK485

Quant Method : Z:\voasrv\HPCHEM1\MSVOA\_W\Method\SFAMWLM050222SMA.M  
 Quant Title : SFAM01.0

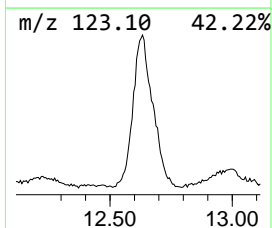
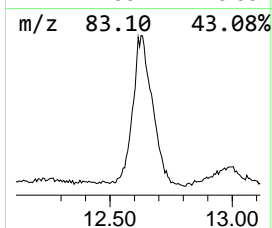
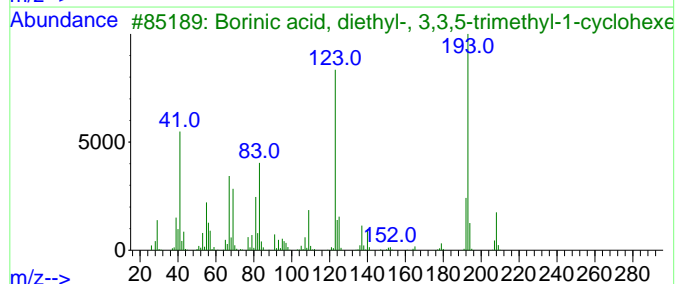
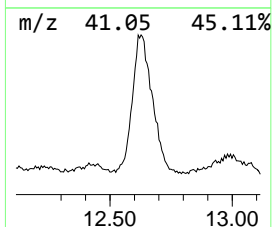
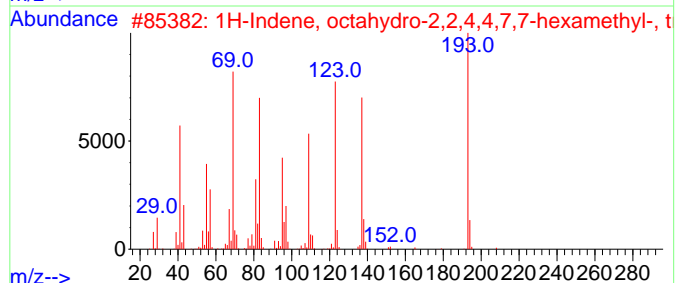
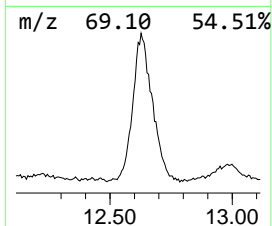
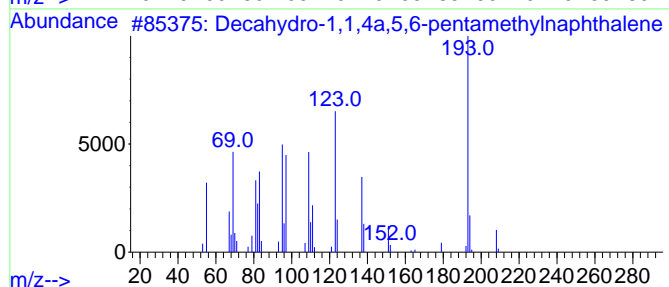
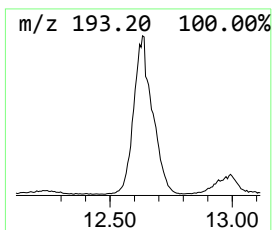
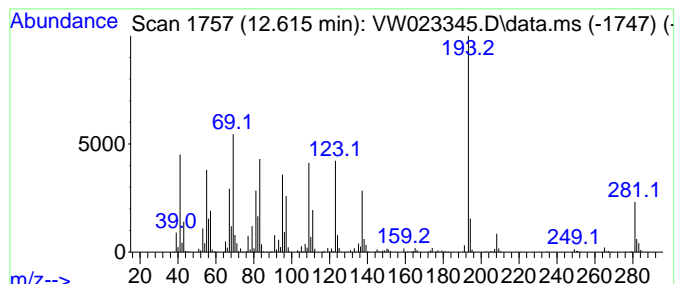
TIC Library : C:\Database\NIST20.L  
 TIC Integration Parameters: LSCINT.P

\*\*\*\*\*  
 Peak Number 6 Decahydro-1,1,4a,5,6-pentam... Concentration Rank 1

R.T.	EstConc	Area	Relative to ISTD	R.T.
12.615	23.93 ug/L	1709530	1,4-Dichlorobenzene-d4	13.554

Hit#	of	5	Tentative ID	MW	MolForm	CAS#	Qual
1			Decahydro-1,1,4a,5,6-pentamethyl...	208	C15H28	080655-44-3	89
2			1H-Indene, octahydro-2,2,4,4,7,7...	208	C15H28	054832-83-6	38
3			Borinic acid, diethyl-, 3,3,5-tr...	208	C13H25BO	057387-76-5	37
4			1-(p-Fluorophenyl)-4-piperidone	193	C11H12FNO	1000238-56-7	35
5			S-Phenyl 5-(phenylthio)pentaneth...	302	C17H18OS2	1000234-40-7	27



Data Path : Z:\voasrv\HPCHEM1\MSVOA\_W\Data\VW052522\  
 Data File : VW023345.D  
 Acq On : 26 May 2022 01:52  
 Operator : SY/VA  
 Sample : VIBLK485  
 Misc : 5.00g/10mL/MSVOA\_W/SOIL  
 ALS Vial : 11 Sample Multiplier: 3

Instrument :  
 MSVOA\_W  
 ClientSampleId :  
 VIBLK485

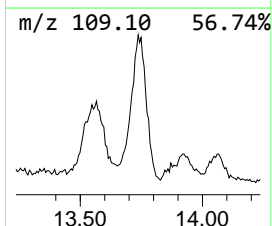
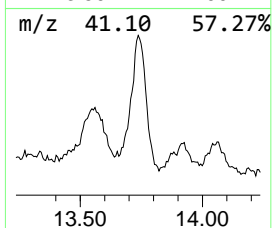
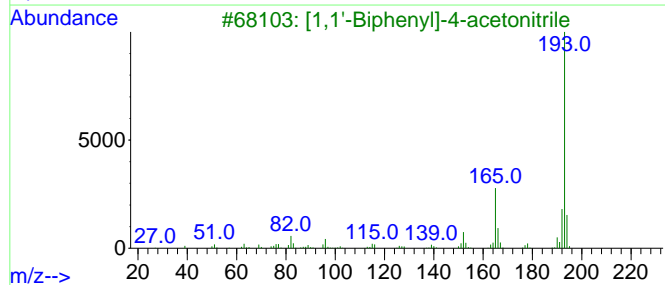
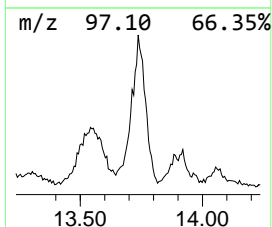
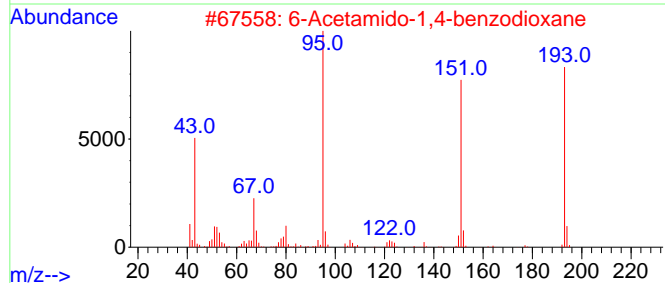
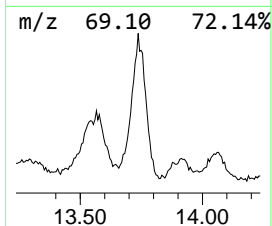
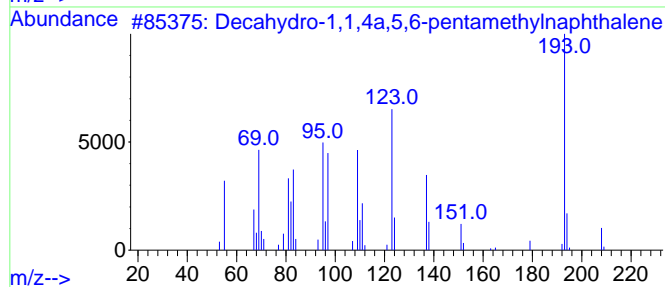
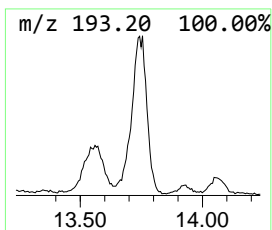
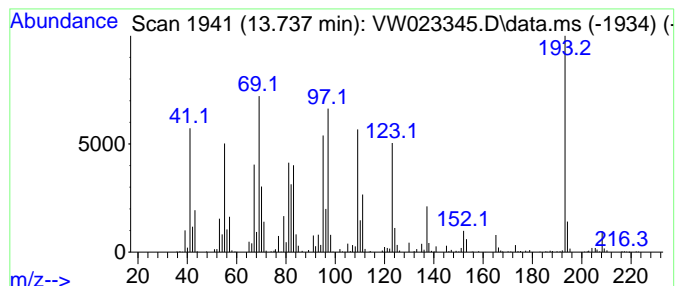
Quant Method : Z:\voasrv\HPCHEM1\MSVOA\_W\Method\SFAMWLM050222SMA.M  
 Quant Title : SFAM01.0

TIC Library : C:\Database\NIST20.L  
 TIC Integration Parameters: LSCINT.P

\*\*\*\*\*  
 Peak Number 7 unknown-02 Concentration Rank 2

R.T.	EstConc	Area	Relative to ISTD	R.T.
13.737	23.59 ug/L	1685150	1,4-Dichlorobenzene-d4	13.554

Hit#	of	5	Tentative ID	MW	MolForm	CAS#	Qual
1			Decahydro-1,1,4a,5,6-pentamethyl...	208	C15H28	080655-44-3	91
2			6-Acetamido-1,4-benzodioxane	193	C10H11NO3	063546-19-0	27
3			[1,1'-Biphenyl]-4-acetonitrile	193	C14H11N	031603-77-7	25
4			Pyrazole, 5-methyl-3-(5-nitro-2-...	193	C8H7N3O3	016239-90-0	18
5			Quinoline, 7-chloro-4-methoxy-	193	C10H8ClNO	1000337-12-8	18



Data Path : Z:\voasrv\HPCHEM1\MSVOA\_W\Data\VW052522\  
 Data File : VW023345.D  
 Acq On : 26 May 2022 01:52  
 Operator : SY/VA  
 Sample : VIBLK485  
 Misc : 5.00g/10mL/MSVOA\_W/SOIL  
 ALS Vial : 11 Sample Multiplier: 1

Instrument :  
 MSVOA\_W  
 ClientSampleId :  
 VIBLK485

Quant Method : Z:\voasrv\HPCHEM1\MSVOA\_W\Method\SFAMWLM050222SMA.M  
 Quant Title : SFAM01.0

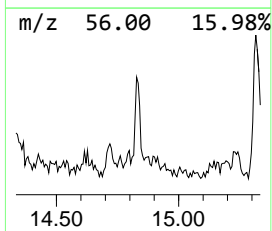
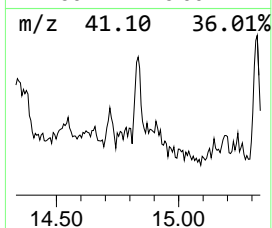
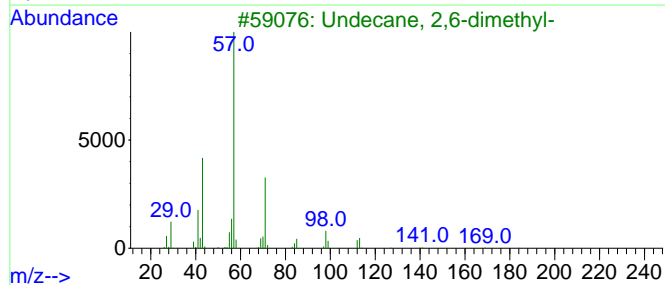
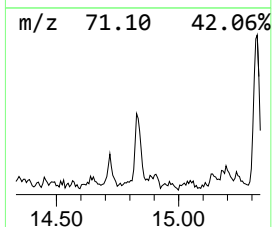
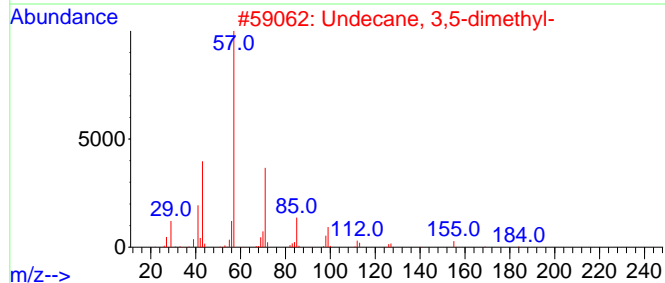
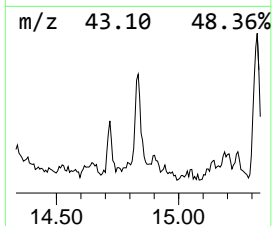
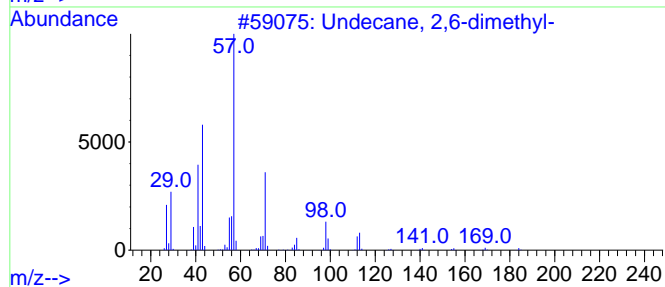
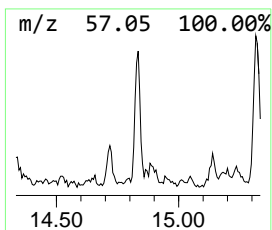
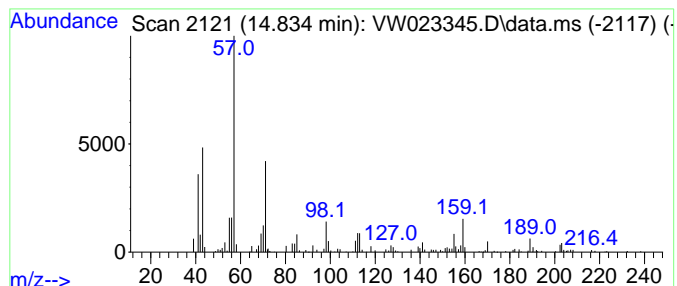
TIC Library : C:\Database\NIST20.L  
 TIC Integration Parameters: LSCINT.P

\*\*\*\*\*  
 Peak Number 8 (DEL) Alkane: Straight-Chai... Concentration Rank 11

R.T.	EstConc	Area	Relative to ISTD	R.T.
14.834	1.72 ug/L	122880	1,4-Dichlorobenzene-d4	13.554

Hit#	of	5	Tentative ID	MW	MolForm	CAS#	Qual
1			Undecane, 2,6-dimethyl-	184	C13H28	017301-23-4	70
2			Undecane, 3,5-dimethyl-	184	C13H28	017312-81-1	70
3			Undecane, 2,6-dimethyl-	184	C13H28	017301-23-4	70
4			Undecane, 2,5-dimethyl-	184	C13H28	017301-22-3	58
5			Dodecane, 6-methyl-	184	C13H28	006044-71-9	50





Data Path : Z:\voasrv\HPCHEM1\MSVOA\_W\Data\VW052522\  
 Data File : VW023345.D  
 Acq On : 26 May 2022 01:52  
 Operator : SY/VA  
 Sample : VIBLK485  
 Misc : 5.00g/10mL/MSVOA\_W/SOIL  
 ALS Vial : 11 Sample Multiplier: 1

Instrument :  
 MSVOA\_W  
 ClientSampleId :  
 VIBLK485

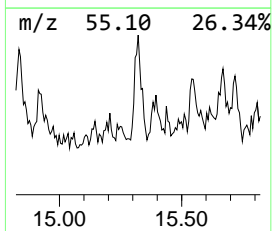
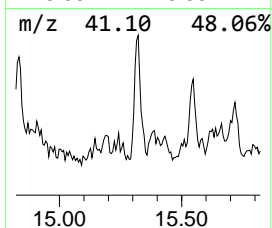
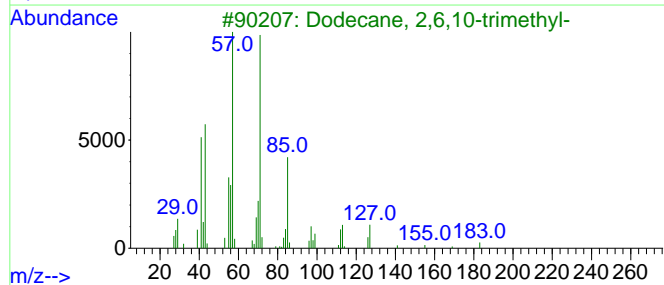
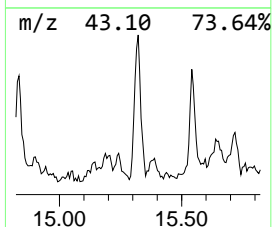
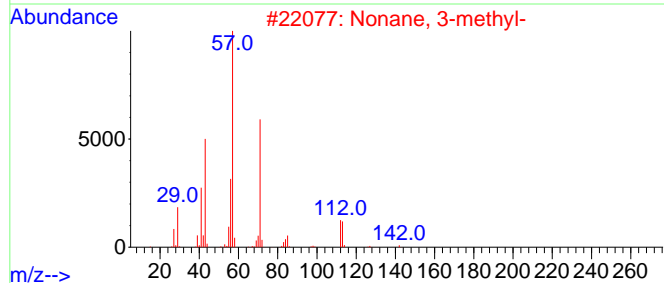
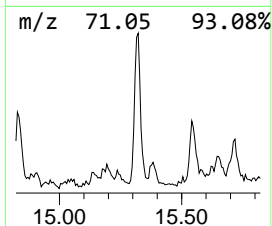
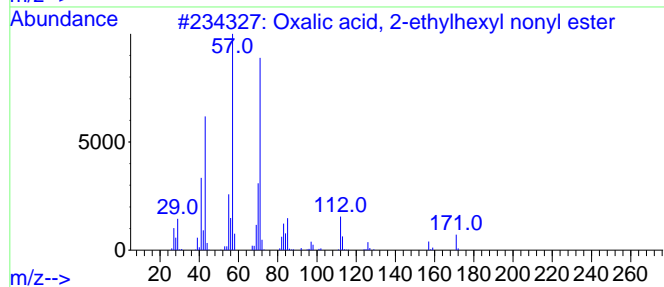
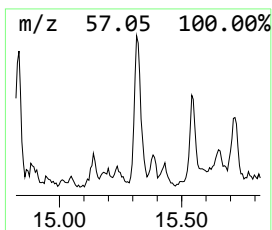
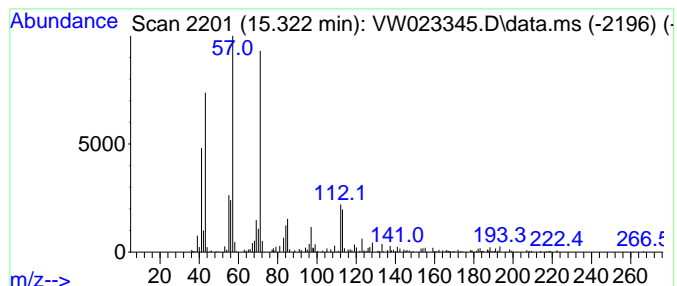
Quant Method : Z:\voasrv\HPCHEM1\MSVOA\_W\Method\SFAMWLM050222SMA.M  
 Quant Title : SFAM01.0

TIC Library : C:\Database\NIST20.L  
 TIC Integration Parameters: LSCINT.P

\*\*\*\*\*  
 Peak Number 9 Oxalic acid, 2-ethylhexyl n... Concentration Rank 8

R.T.	EstConc	Area	Relative to ISTD	R.T.
15.322	2.23 ug/L	159606	1,4-Dichlorobenzene-d4	13.554

Hit#	of 5	Tentative ID	MW	MolForm	CAS#	Qual
1		Oxalic acid, 2-ethylhexyl nonyl ...	328	C19H36O4	1000309-39-2	64
2		Nonane, 3-methyl-	142	C10H22	005911-04-6	62
3		Dodecane, 2,6,10-trimethyl-	212	C15H32	003891-98-3	59
4		Tridecane, 7-methyl-	198	C14H30	026730-14-3	58
5		Octane, 2,3,3-trimethyl-	156	C11H24	062016-30-2	53



Data Path : Z:\voasrv\HPCHEM1\MSVOA\_W\Data\VW052522\  
 Data File : VW023345.D  
 Acq On : 26 May 2022 01:52  
 Operator : SY/VA  
 Sample : VIBLK485  
 Misc : 5.00g/10mL/MSVOA\_W/SOIL  
 ALS Vial : 11 Sample Multiplier: 1

Instrument :  
 MSVOA\_W  
 ClientSampleId :  
 VIBLK485

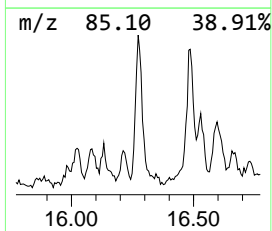
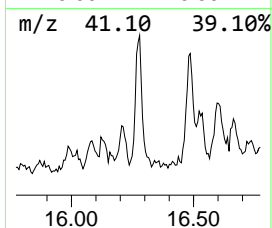
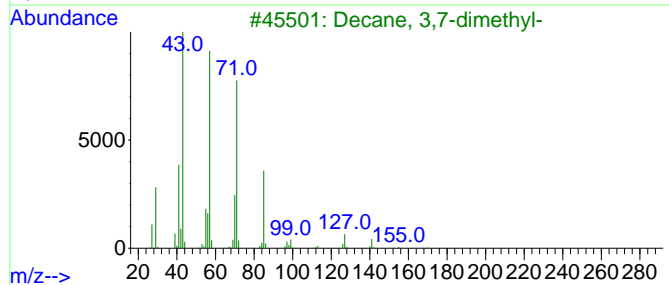
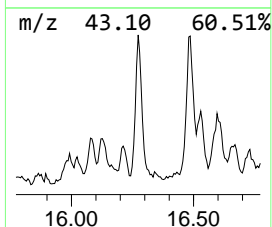
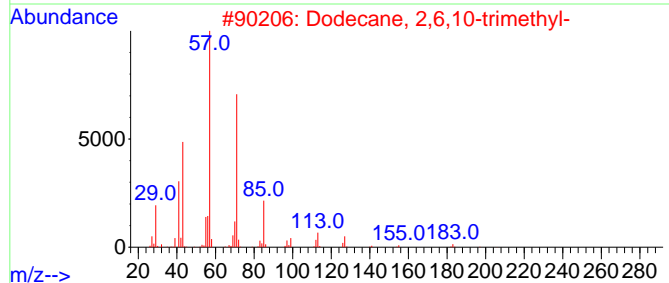
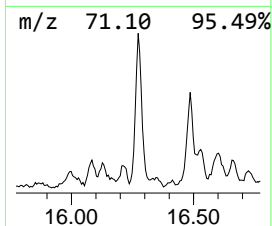
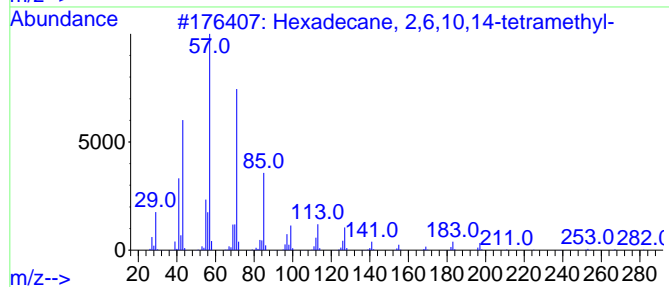
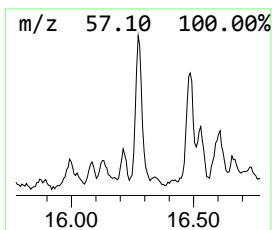
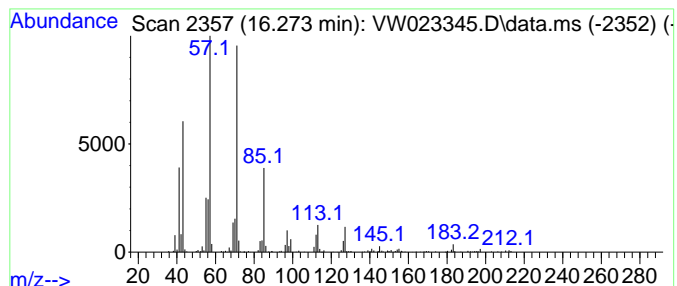
Quant Method : Z:\voasrv\HPCHEM1\MSVOA\_W\Method\SFAMWLM050222SMA.M  
 Quant Title : SFAM01.0

TIC Library : C:\Database\NIST20.L  
 TIC Integration Parameters: LSCINT.P

\*\*\*\*\*  
 Peak Number 10 (DEL) Alkane: Straight-Chai... Concentration Rank 5

R.T.	EstConc	Area	Relative to ISTD	R.T.
16.273	3.83 ug/L	273374	1,4-Dichlorobenzene-d4	13.554

Hit#	of 5	Tentative ID	MW	MolForm	CAS#	Qual
1		Hexadecane, 2,6,10,14-tetramethyl-	282	C20H42	000638-36-8	90
2		Dodecane, 2,6,10-trimethyl-	212	C15H32	003891-98-3	80
3		Decane, 3,7-dimethyl-	170	C12H26	017312-54-8	72
4		Dodecane, 2,6,11-trimethyl-	212	C15H32	031295-56-4	72
5		Pentadecane, 2,6,10,14-tetramethyl-	268	C19H40	001921-70-6	72



Data Path : Z:\voasrv\HPCHEM1\MSVOA\_W\Data\VW052522\  
 Data File : VW023345.D  
 Acq On : 26 May 2022 01:52  
 Operator : SY/VA  
 Sample : VIBLK485  
 Misc : 5.00g/10mL/MSVOA\_W/SOIL  
 ALS Vial : 11 Sample Multiplier: 1

Instrument :  
 MSVOA\_W  
 ClientSampleId :  
 VIBLK485

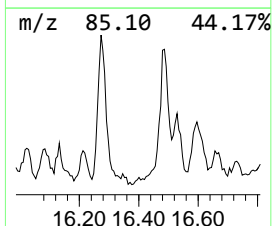
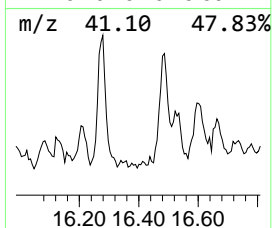
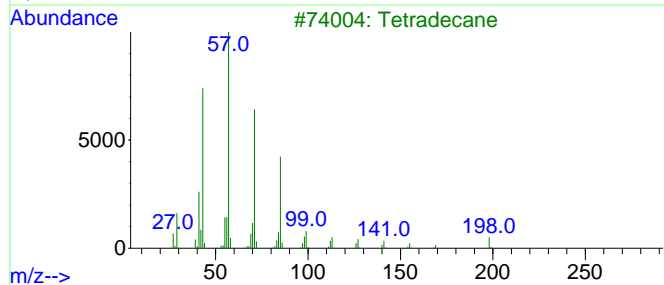
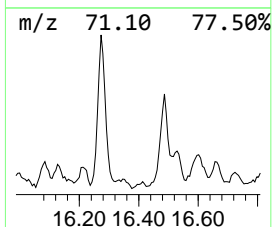
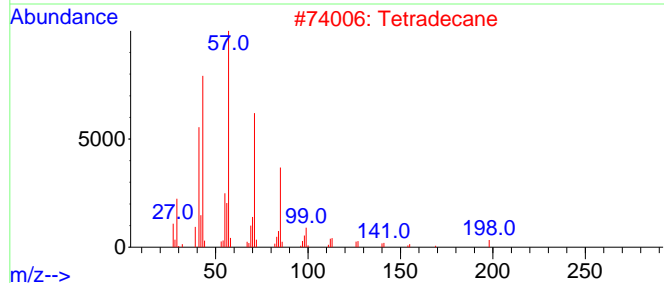
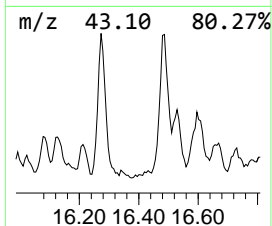
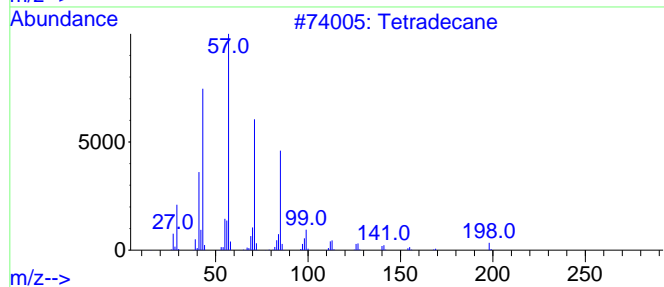
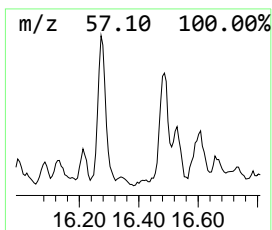
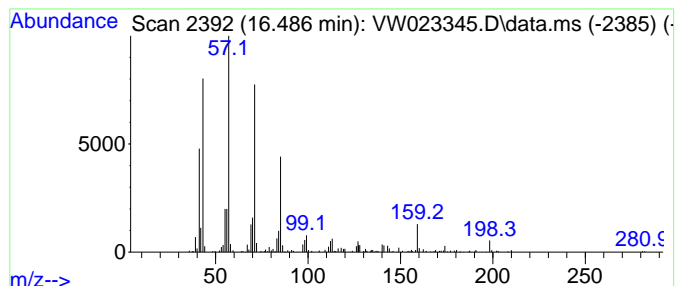
Quant Method : Z:\voasrv\HPCHEM1\MSVOA\_W\Method\SFAMWLM050222SMA.M  
 Quant Title : SFAM01.0

TIC Library : C:\Database\NIST20.L  
 TIC Integration Parameters: LSCINT.P

\*\*\*\*\*  
 Peak Number 11 (DEL) Alkane: Straight-Chai... Concentration Rank 7

R.T.	EstConc	Area	Relative to ISTD	R.T.
16.486	3.51 ug/L	250999	1,4-Dichlorobenzene-d4	13.554

Hit#	of	5	Tentative ID	MW	MolForm	CAS#	Qual
1			Tetradecane	198	C14H30	000629-59-4	91
2			Tetradecane	198	C14H30	000629-59-4	90
3			Tetradecane	198	C14H30	000629-59-4	87
4			Nonadecane, 9-methyl-	282	C20H42	013287-24-6	81
5			Pentadecane	212	C15H32	000629-62-9	80



Data Path : Z:\voasrv\HPCHEM1\MSVOA\_W\Data\VW052522\  
 Data File : VW023345.D  
 Acq On : 26 May 2022 01:52  
 Operator : SY/VA  
 Sample : VIBLK485  
 Misc : 5.00g/10mL/MSVOA\_W/SOIL  
 ALS Vial : 11 Sample Multiplier: 1

Instrument :  
 MSVOA\_W  
 ClientSampleId :  
 VIBLK485

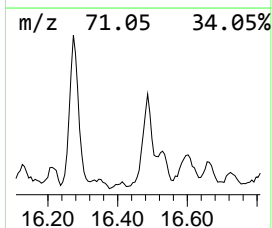
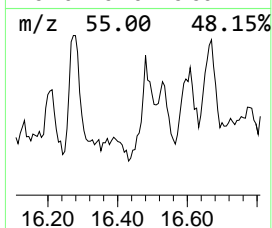
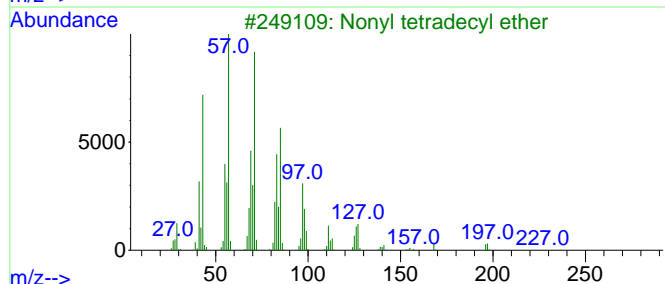
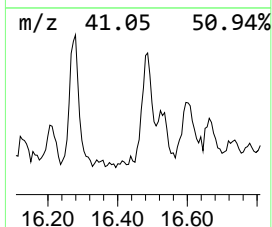
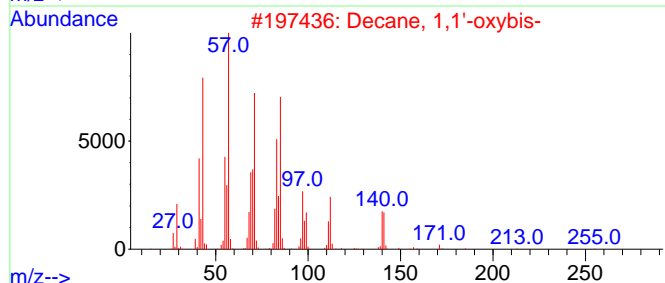
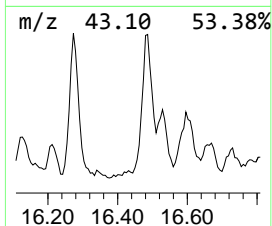
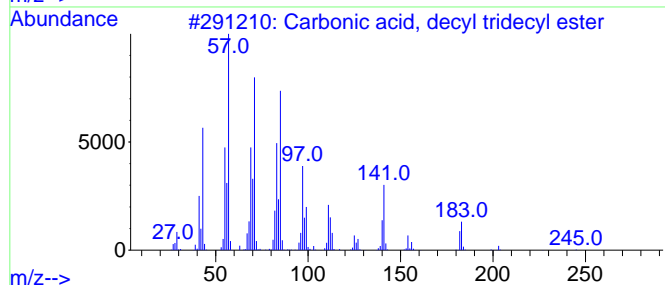
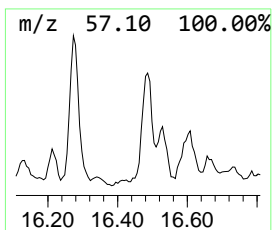
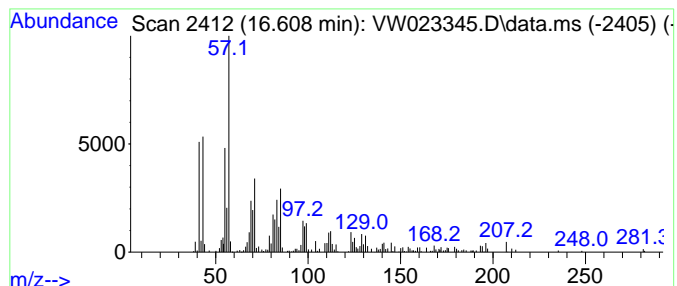
Quant Method : Z:\voasrv\HPCHEM1\MSVOA\_W\Method\SFAMWLM050222SMA.M  
 Quant Title : SFAM01.0

TIC Library : C:\Database\NIST20.L  
 TIC Integration Parameters: LSCINT.P

\*\*\*\*\*  
 Peak Number 12 Carbonic acid, decyl tridec... Concentration Rank 9

R.T.	EstConc	Area	Relative to ISTD	R.T.
16.608	2.23 ug/L	159101	1,4-Dichlorobenzene-d4	13.554

Hit#	of	5	Tentative ID	MW	MolForm	CAS#	Qual
1			Carbonic acid, decyl tridecyl ester	384	C24H48O3	1000383-16-2	72
2			Decane, 1,1'-oxybis-	298	C20H42O	002456-28-2	72
3			Nonyl tetradecyl ether	340	C23H48O	1000406-37-6	64
4			1-Tetradecene	196	C14H28	001120-36-1	60
5			1-Tetradecene	196	C14H28	001120-36-1	58



Data Path : Z:\voasrv\HPCHEM1\MSVOA\_W\Data\VW052522\  
 Data File : VW023345.D  
 Acq On : 26 May 2022 01:52  
 Operator : SY/VA  
 Sample : VIBLK485  
 Misc : 5.00g/10mL/MSVOA\_W/SOIL  
 ALS Vial : 11 Sample Multiplier: 1

Instrument :  
 MSVOA\_W  
 ClientSampleId :  
 VIBLK485

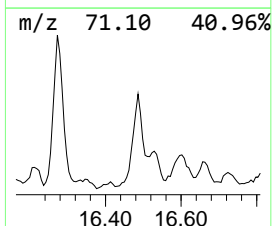
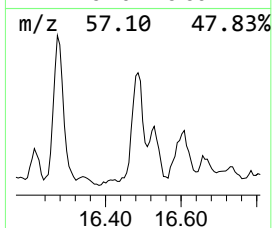
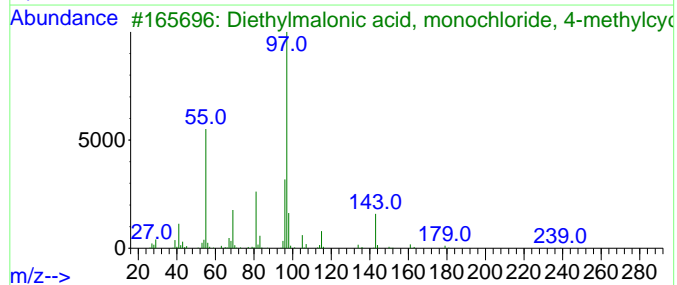
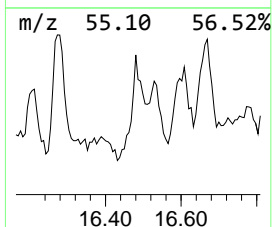
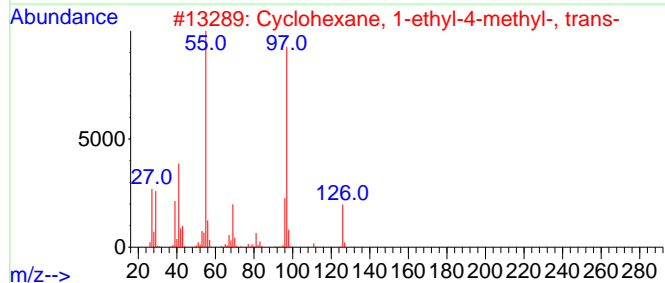
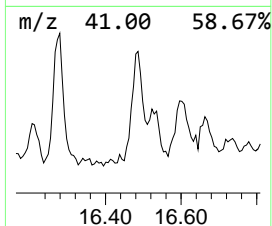
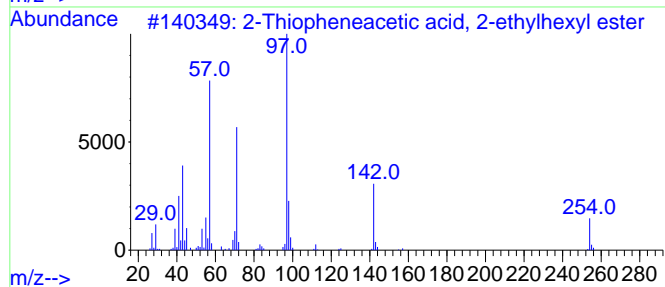
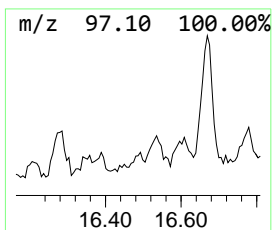
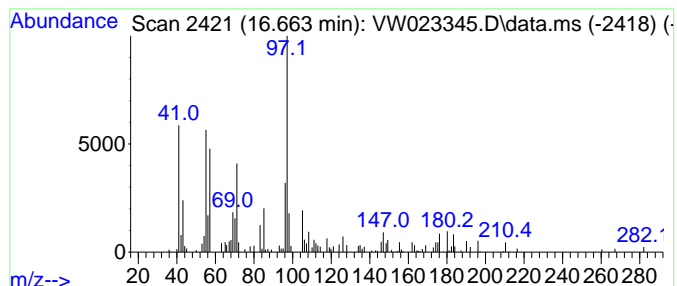
Quant Method : Z:\voasrv\HPCHEM1\MSVOA\_W\Method\SFAMWLM050222SMA.M  
 Quant Title : SFAM01.0

TIC Library : C:\Database\NIST0.L  
 TIC Integration Parameters: LSCINT.P

\*\*\*\*\*  
 Peak Number 13 unknown-03 Concentration Rank 13

R.T.	EstConc	Area	Relative to ISTD	R.T.
16.663	1.40 ug/L	100078	1,4-Dichlorobenzene-d4	13.554

Hit#	of	5	Tentative ID	MW	MolForm	CAS#	Qual
1			2-Thiopheneacetic acid, 2-ethylh...	254	C14H22O2S	1000278-95-7	37
2			Cyclohexane, 1-ethyl-4-methyl-, ...	126	C9H18	006236-88-0	35
3			Diethylmalonic acid, monochlorid...	274	C14H23ClO3	1000371-17-9	35
4			Oxalic acid, cyclohexylmethyl pr...	228	C12H20O4	1010309-68-1	35
5			Cyclohexane, 1-methyl-2-propyl-	140	C10H20	004291-79-6	35



Data Path : Z:\voasrv\HPCHEM1\MSVOA\_W\Data\VW052522\  
 Data File : VW023345.D  
 Acq On : 26 May 2022 01:52  
 Operator : SY/VA  
 Sample : VIBLK485  
 Misc : 5.00g/10mL/MSVOA\_W/SOIL  
 ALS Vial : 11 Sample Multiplier: 1

Instrument :  
 MSVOA\_W  
 ClientSampleId :  
 VIBLK485

Quant Method : Z:\voasrv\HPCHEM1\MSVOA\_W\Method\SFAMWLM050222SMA.M  
 Quant Title : SFAM01.0

TIC Library : C:\Database\NIST0.L  
 TIC Integration Parameters: LSCINT.P

TIC Top Hit name	RT	EstConc	Units	Response	--Internal Standard--			
					#	RT	Resp	Conc
unknown-01	11.067	1.9	ug/L	92761	2	11.627	1227030	25.0
Decahydro-1,1,4...	12.615	23.9	ug/L	1709530	3	13.554	1785990	25.0
unknown-02	13.737	23.6	ug/L	1685150	3	13.554	1785990	25.0
(DEL) Alkane: S...	14.834	1.7	ug/L	122880	3	13.554	1785990	25.0
Oxalic acid, 2-...	15.322	2.2	ug/L	159606	3	13.554	1785990	25.0
(DEL) Alkane: S...	16.273	3.8	ug/L	273374	3	13.554	1785990	25.0
(DEL) Alkane: S...	16.486	3.5	ug/L	250999	3	13.554	1785990	25.0
Carbonic acid, ...	16.608	2.2	ug/L	159101	3	13.554	1785990	25.0
unknown-03	16.663	1.4	ug/L	100078	3	13.554	1785990	25.0