

Data File : VW010642.D  
 Acq On : 31 May 2019 17:46  
 Operator : SY/VA  
 Sample : K3097-19  
 Misc : 5.02G/5ML/MSVOA\_W/SOIL  
 ALS Vial : 15 Sample Multiplier: 1

Instrument :  
 MSVOA\_W  
 ClientSampleId :  
 0439-PR-2(PASSAIC)

Quant Time: Jun 01 04:52:33 2019  
 Quant Method : Z:\VOASRV\HPCHEM1\MSVOA\_W\METHOD\82W052019S.M  
 Quant Title : SW846 8260  
 QLast Update : Tue May 21 06:38:43 2019  
 Response via : Initial Calibration

Internal Standards	R.T.	QIon	Response	Conc	Units	Dev(Min)
1) Pentafluorobenzene	7.95	168	164709	50.00	ug/l	0.00
34) 1,4-Difluorobenzene	8.84	114	285996	50.00	ug/l	0.00
63) Chlorobenzene-d5	11.63	117	250022	50.00	ug/l	0.00
72) 1,4-Dichlorobenzene-d4	13.56	152	108560	50.00	ug/l	0.00

System Monitoring Compounds

33) 1,2-Dichloroethane-d4	8.30	65	90492	53.23	ug/l	0.00
Spiked Amount	50.000		Recovery	=	106.46%	
35) Dibromofluoromethane	7.88	113	86215	49.68	ug/l	0.00
Spiked Amount	50.000		Recovery	=	99.36%	
50) Toluene-d8	10.32	98	340503	51.36	ug/l	0.00
Spiked Amount	50.000		Recovery	=	102.72%	
62) 4-Bromofluorobenzene	12.62	95	129467	49.03	ug/l	0.00
Spiked Amount	50.000		Recovery	=	98.06%	

Target Compounds

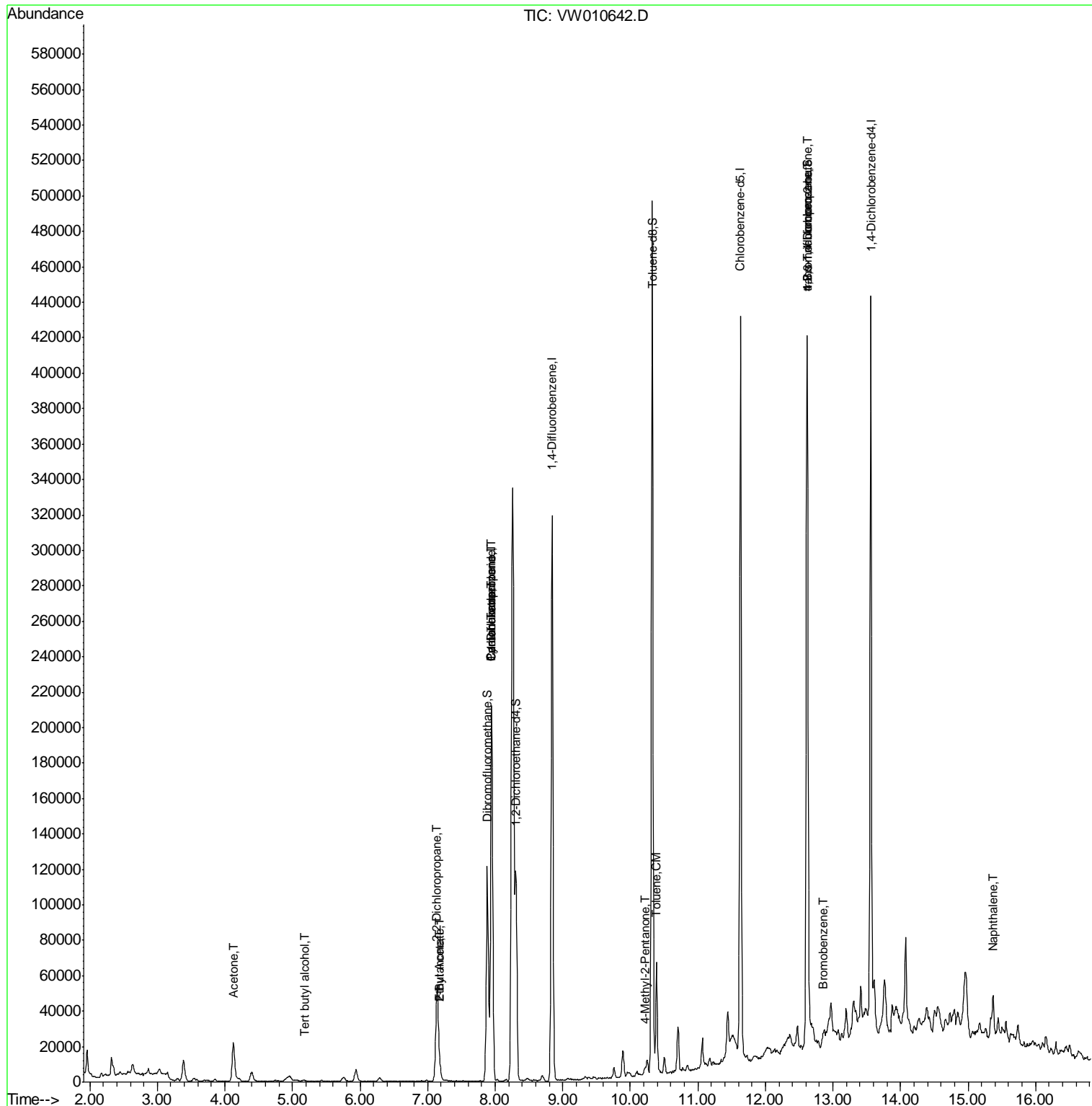
					Qvalue	
2) Dichlorodifluoromethane	2.00	85	145	Below Cal	#	42
11) Tert butyl alcohol	5.17	59	1161	7.592	ug/l #	85
13) Acrolein	3.85	56	45	Below Cal	#	1
16) Acetone	4.13	43	38717	111.569	ug/l	95
20) Methylene Chloride	4.91	84	612	Below Cal	#	79
25) 2-Butanone	7.18	43	10648	21.441	ug/l	93
26) 2,2-Dichloropropane	7.14	77	4040	1.376	ug/l #	52
31) Cyclohexane	7.95	56	3426	1.061	ug/l #	10
36) 1,1-Dichloropropene	7.95	75	12061	4.527	ug/l #	48
37) Ethyl Acetate	7.18	43	10648	9.399	ug/l #	67
38) Carbon Tetrachloride	7.95	117	16329	5.682	ug/l #	14
51) 4-Methyl-2-Pentanone	10.21	43	2381	2.076	ug/l #	73
52) Toluene	10.39	92	27236	5.477	ug/l	99
76) 1,2,3-Trichloropropane	12.62	75	59364	53.872	ug/l #	1
77) Bromobenzene	12.85	156	4399	2.282	ug/l #	1
81) trans-1,4-Dichloro-2-buten	12.62	75	59364	112.432	ug/l #	15
95) Naphthalene	15.37	128	17887	3.634	ug/l #	93

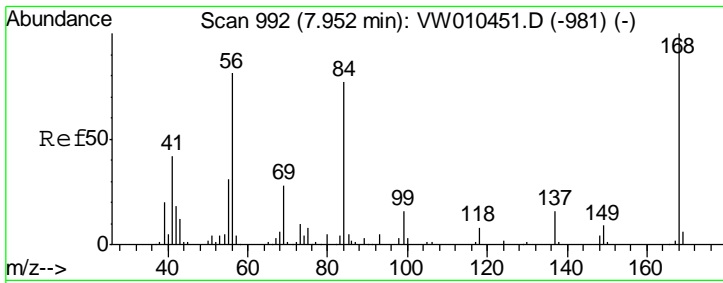
(#) = qualifier out of range (m) = manual integration (+) = signals summed

Data File : VW010642.D  
Acq On : 31 May 2019 17:46  
Operator : SY/VA  
Sample : K3097-19  
Misc : 5.02G/5ML/MSVOA\_W/SOIL  
ALS Vial : 15 Sample Multiplier: 1

Instrument :  
MSVOA\_W  
Client Sample ID :  
0439-PR-2(PASSAIC)

Quant Time: Jun 01 04:52:33 2019  
Quant Method : Z:\VOASRV\HPCHEM1\MSVOA\_W\METHOD\82W052019S.M  
Quant Title : SW846 8260  
QLast Update : Tue May 21 06:38:43 2019  
Response via : Initial Calibration

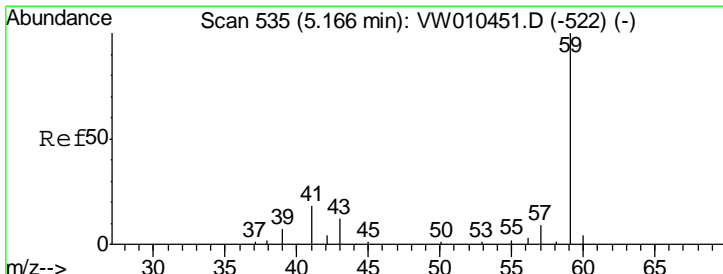
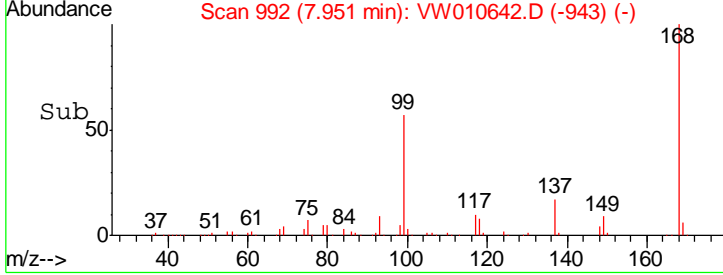
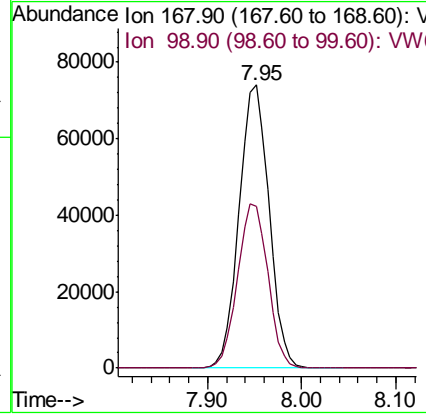
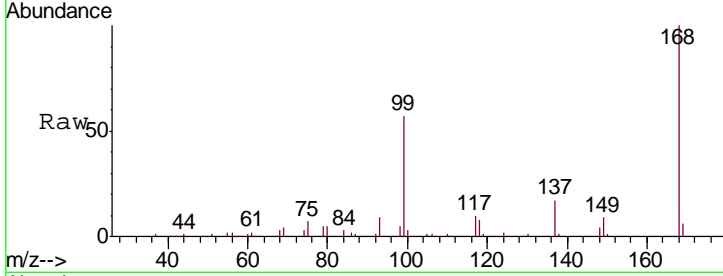




#1  
 Pentafluorobenzene  
 Concen: 50.000 ug/l  
 RT: 7.95 min Scan# 992  
 Delta R.T. -0.00 min  
 Lab File: VW010642.D  
 Acq: 31 May 2019 17:46

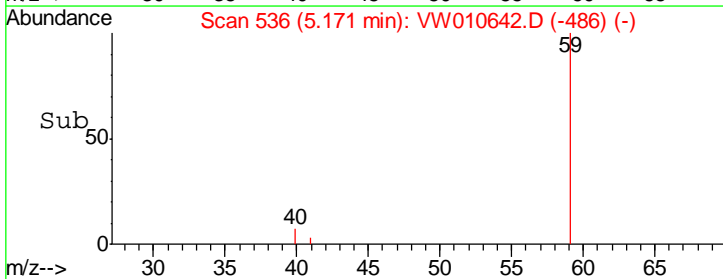
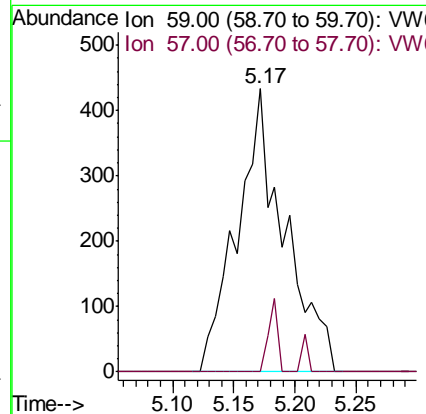
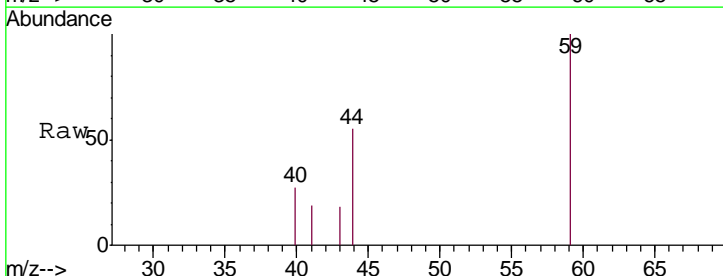
**Instrument :**  
 MSVOA\_W  
**ClientSampled :**  
 0439-PR-2(PASSAIC)

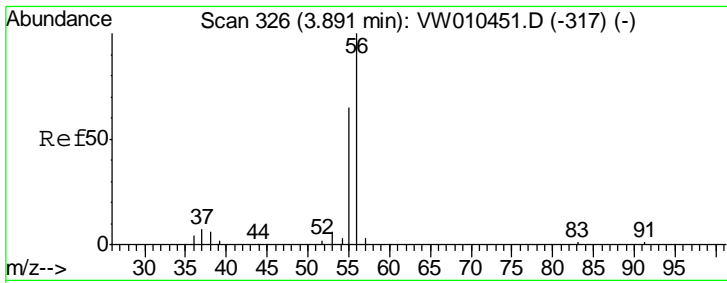
Tgt Ion: 168 Resp: 164709  
 Ion Ratio Lower Upper  
 168 100  
 99 57.2 46.1 69.1



#11  
 Tert butyl alcohol  
 Concen: 7.592 ug/l  
 RT: 5.17 min Scan# 536  
 Delta R.T. 0.01 min  
 Lab File: VW010642.D  
 Acq: 31 May 2019 17:46

Tgt Ion: 59 Resp: 1161  
 Ion Ratio Lower Upper  
 59 100  
 57 5.3 8.8 13.2#

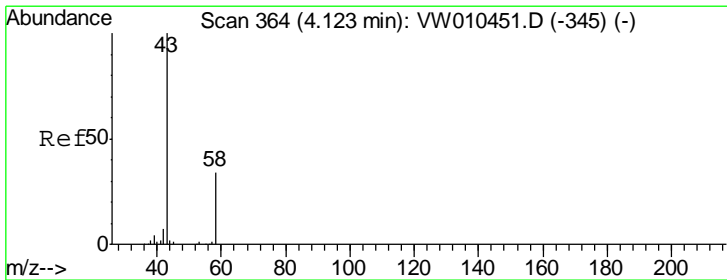
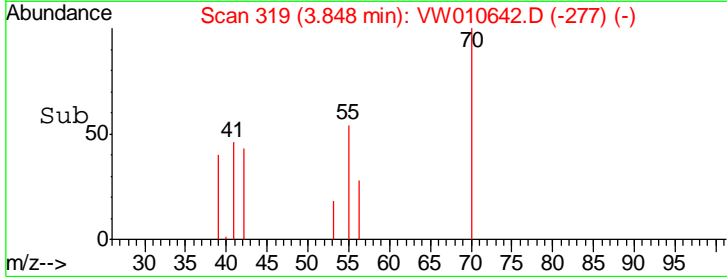
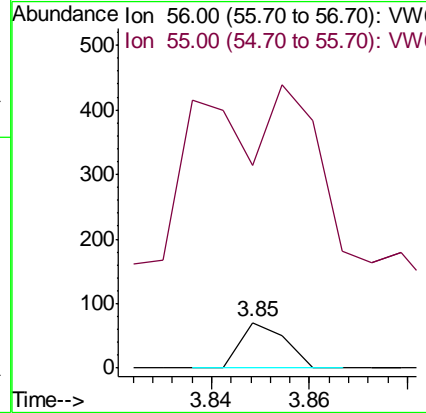
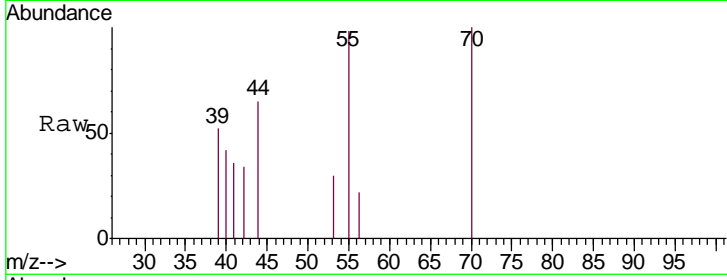




#13  
 Acrolein  
 Concen: Below Cal  
 RT: 3.85 min Scan# 319  
 Delta R.T. -0.04 min  
 Lab File: VW010642.D  
 Acq: 31 May 2019 17:46

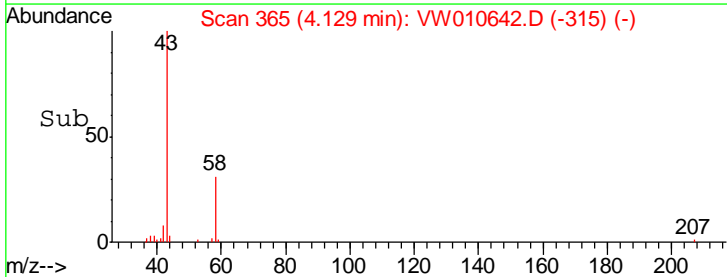
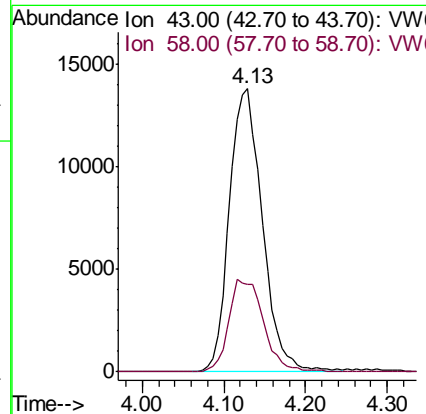
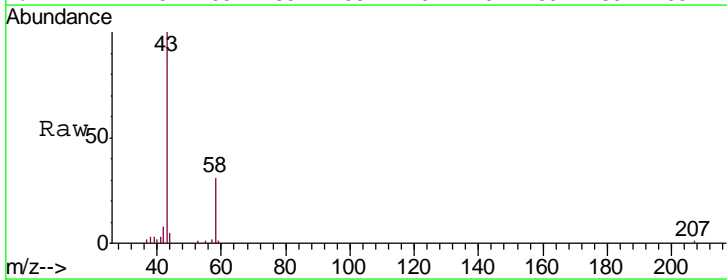
Instrument :  
 MSVOA\_W  
 ClientSampled :  
 0439-PR-2(PASSAIC)

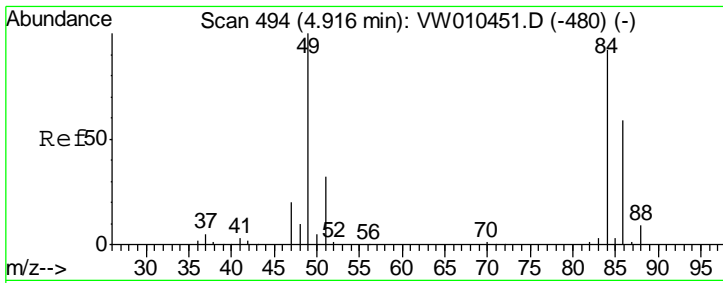
Tgt Ion: 56 Resp: 45  
 Ion Ratio Lower Upper  
 56 100  
 55 1271.1 57.9 86.9#



#16  
 Acetone  
 Concen: 111.569 ug/l  
 RT: 4.13 min Scan# 365  
 Delta R.T. 0.01 min  
 Lab File: VW010642.D  
 Acq: 31 May 2019 17:46

Tgt Ion: 43 Resp: 38717  
 Ion Ratio Lower Upper  
 43 100  
 58 31.1 27.0 40.4

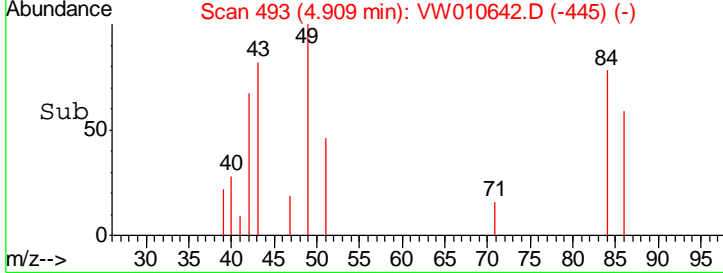
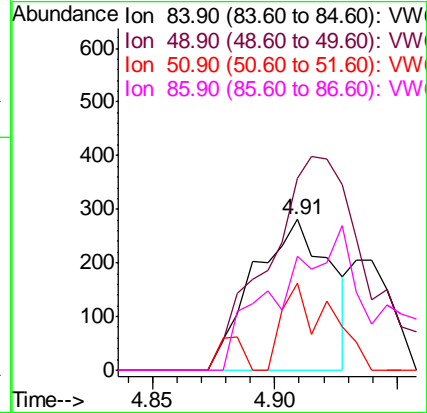
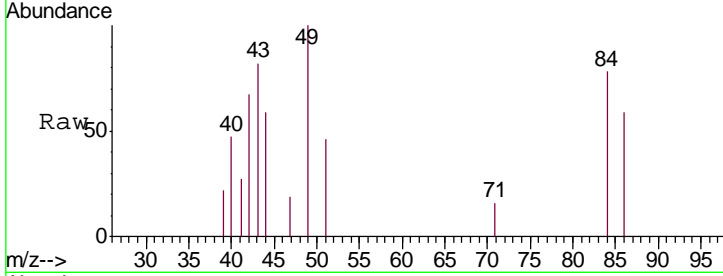




#20  
 Methylene Chloride  
 Concen: Below Cal  
 RT: 4.91 min Scan# 493  
 Delta R.T. -0.01 min  
 Lab File: VW010642.D  
 Acq: 31 May 2019 17:46

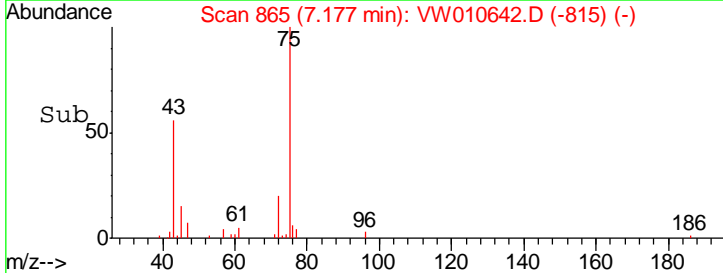
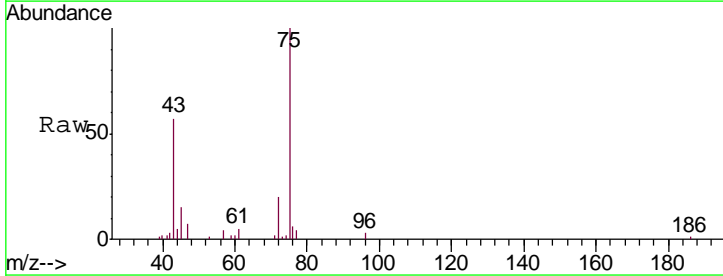
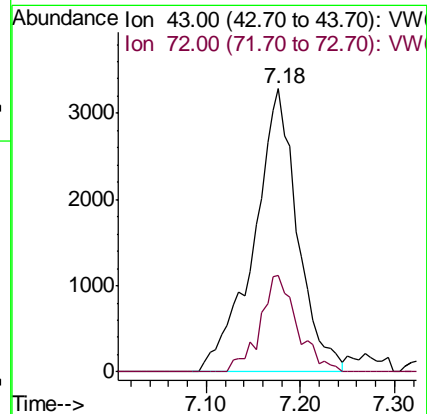
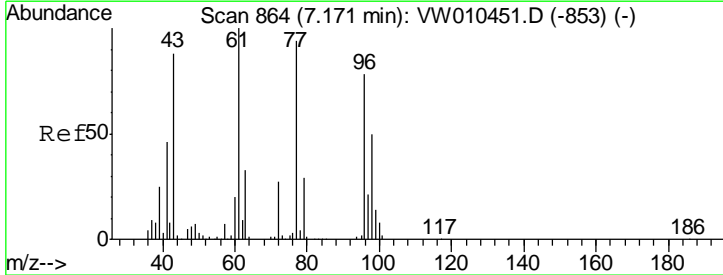
Instrument : MSVOA\_W  
 ClientSampled : 0439-PR-2(PASSAIC)

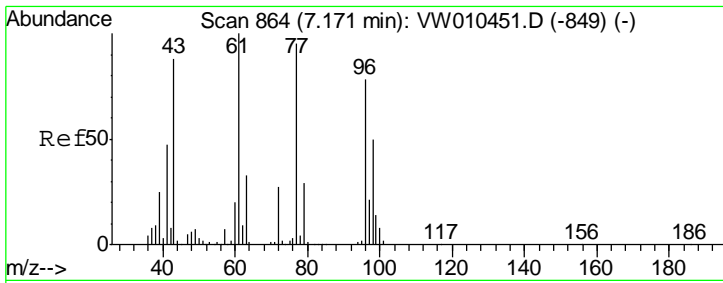
Tgt Ion	Resp	Lower	Upper
84	100		
49	127.4	87.2	130.8
51	58.0	27.7	41.5#
86	75.8	51.4	77.0



#25  
 2-Butanone  
 Concen: 21.441 ug/l  
 RT: 7.18 min Scan# 865  
 Delta R.T. 0.01 min  
 Lab File: VW010642.D  
 Acq: 31 May 2019 17:46

Tgt Ion	Resp	Lower	Upper
43	100		
72	34.0	24.1	36.1

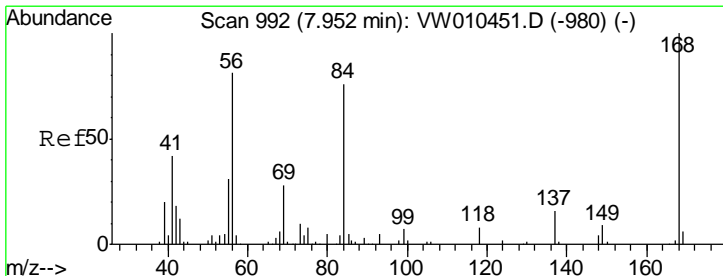
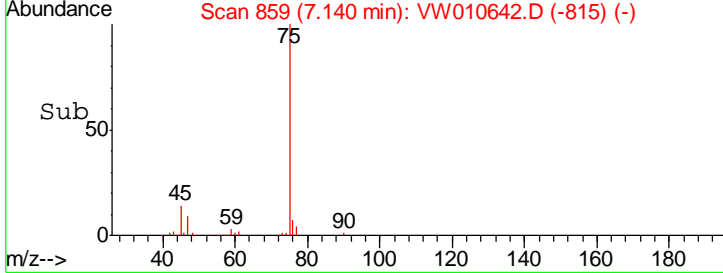
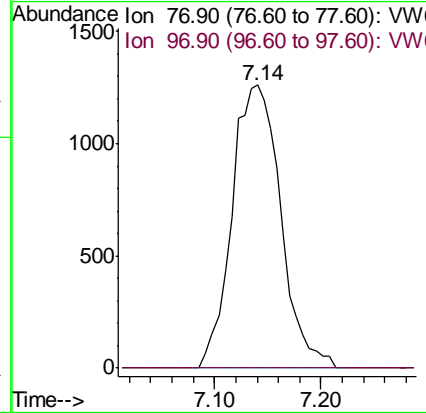
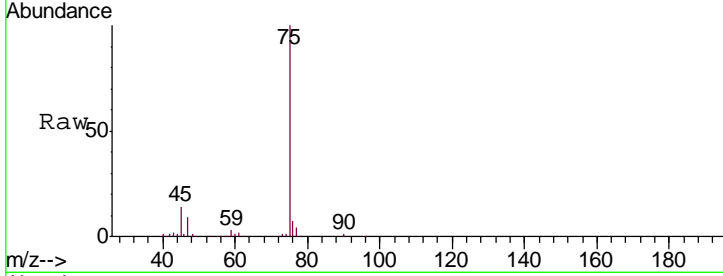




#26  
 2,2-Dichloropropane  
 Concen: 1.376 ug/l  
 RT: 7.14 min Scan# 859  
 Delta R.T. -0.03 min  
 Lab File: VW010642.D  
 Acq: 31 May 2019 17:46

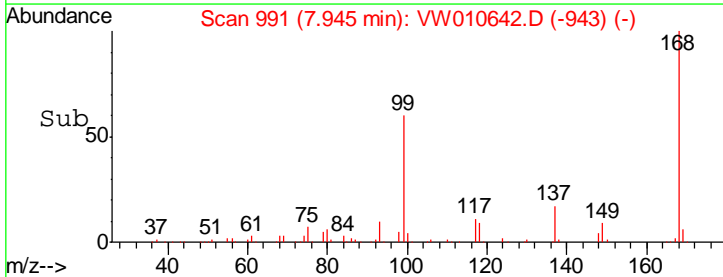
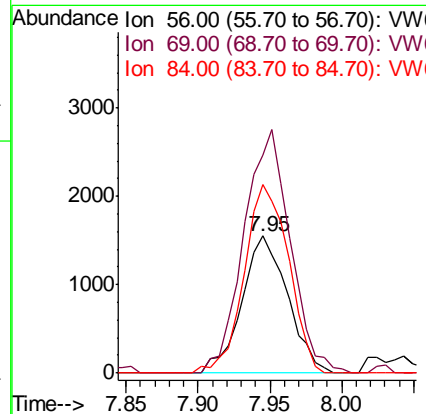
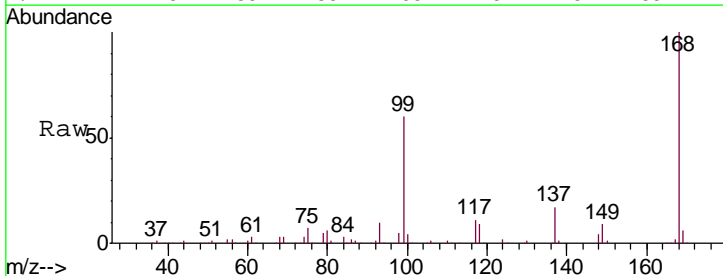
Instrument :  
 MSVOA\_W  
 ClientSampled :  
 0439-PR-2(PASSAIC)

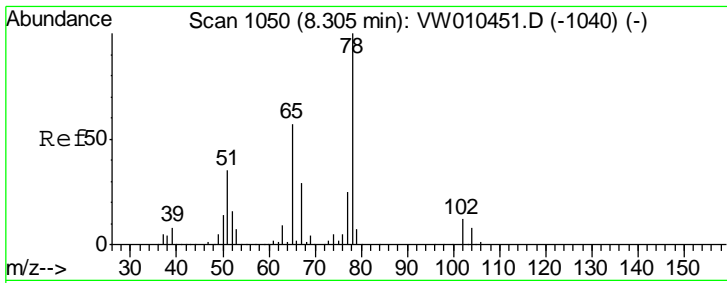
Tgt Ion: 77 Resp: 4040  
 Ion Ratio Lower Upper  
 77 100  
 97 0.0 11.7 35.0#



#31  
 Cyclohexane  
 Concen: 1.061 ug/l  
 RT: 7.95 min Scan# 991  
 Delta R.T. -0.01 min  
 Lab File: VW010642.D  
 Acq: 31 May 2019 17:46

Tgt Ion: 56 Resp: 3426  
 Ion Ratio Lower Upper  
 56 100  
 69 159.0 28.2 42.2#  
 84 137.3 75.8 113.8#

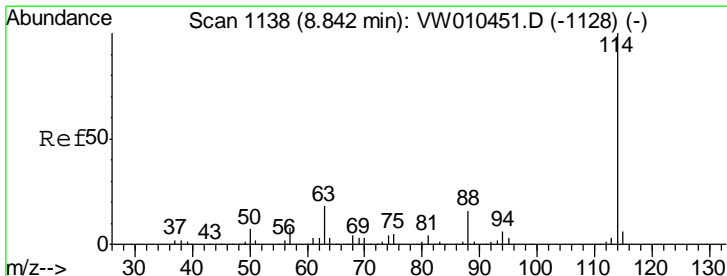
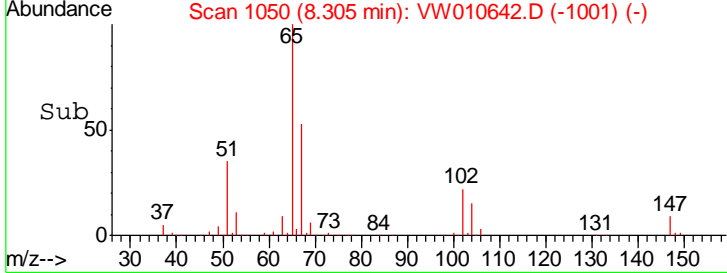
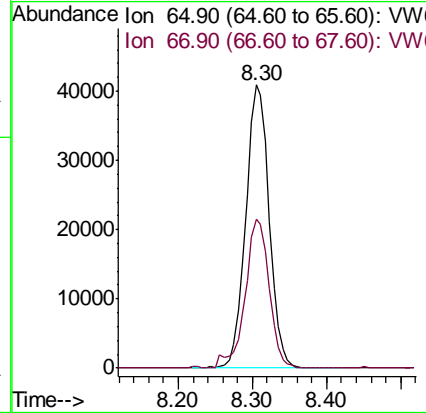
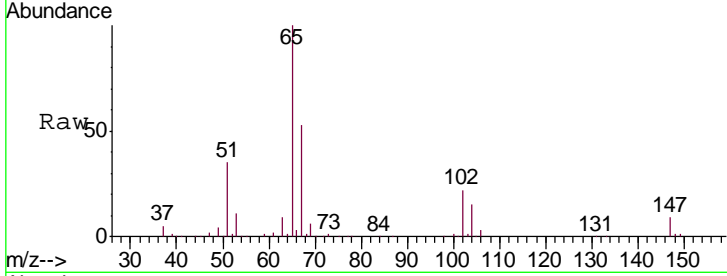




#33  
 1,2-Dichloroethane-d4  
 Concen: 53.228 ug/l  
 RT: 8.30 min Scan# 1050  
 Delta R.T. -0.00 min  
 Lab File: VW010642.D  
 Acq: 31 May 2019 17:46

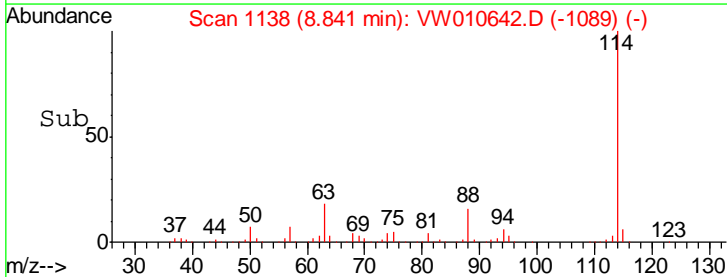
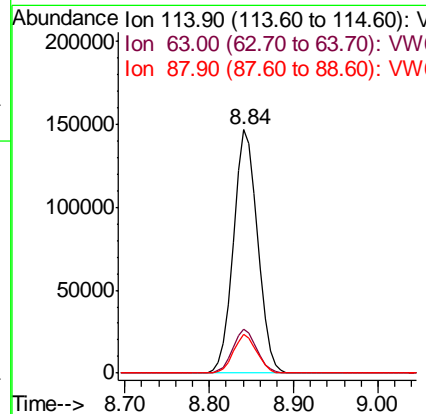
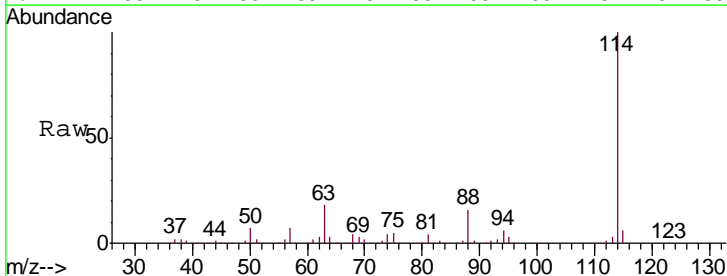
Instrument : MSVOA\_W  
 ClientSampled : 0439-PR-2(PASSAIC)

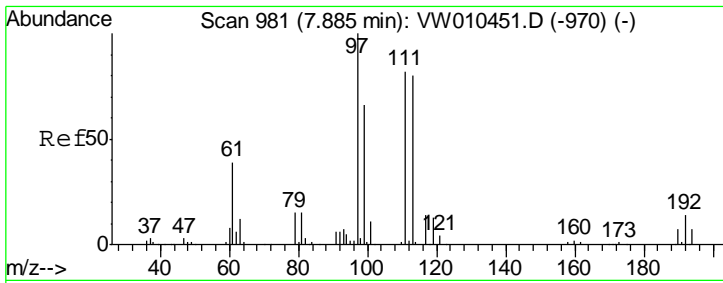
Tgt Ion	Resp	Lower	Upper
65	100		
67	54.1	0.0	103.6



#34  
 1,4-Difluorobenzene  
 Concen: 50.000 ug/l  
 RT: 8.84 min Scan# 1138  
 Delta R.T. -0.00 min  
 Lab File: VW010642.D  
 Acq: 31 May 2019 17:46

Tgt Ion	Resp	Lower	Upper
114	100		
63	18.0	0.0	36.0
88	15.7	0.0	32.0

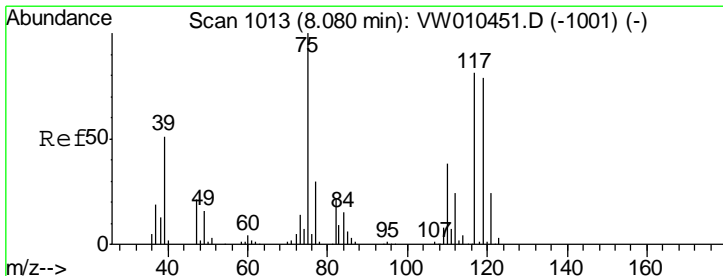
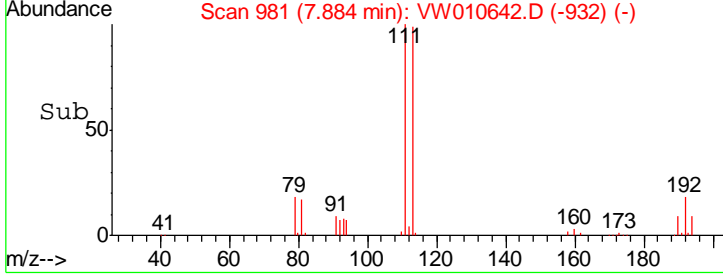
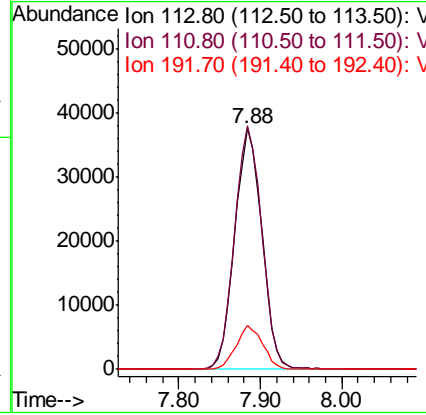
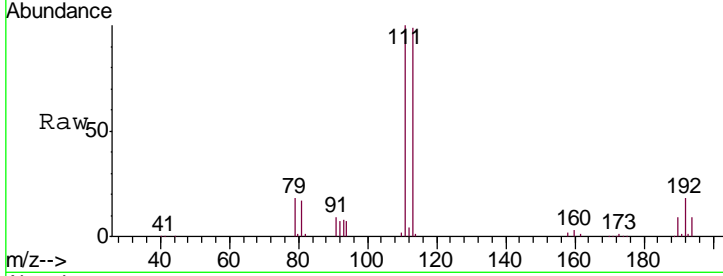




#35  
 Dibromofluoromethane  
 Concen: 49.681 ug/l  
 RT: 7.88 min Scan# 981  
 Delta R.T. -0.00 min  
 Lab File: VW010642.D  
 Acq: 31 May 2019 17:46

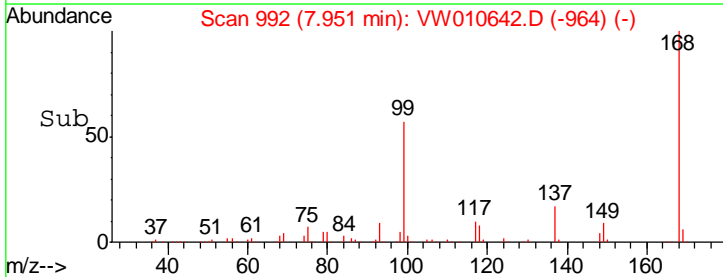
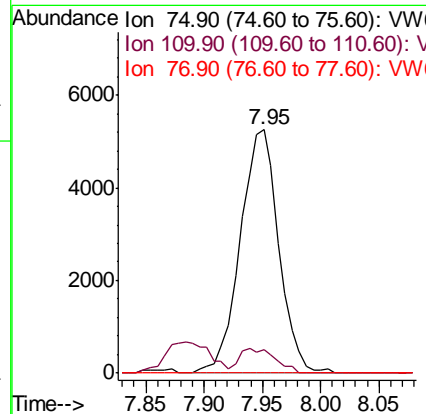
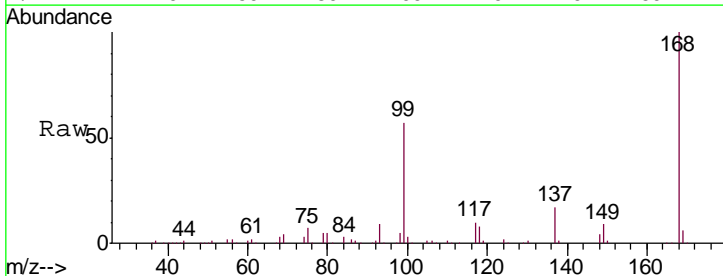
Instrument :  
 MSVOA\_W  
 ClientSampleId :  
 0439-PR-2(PASSAIC)

Tgt Ion	Resp	Lower	Upper
113	86215		
113	100		
111	101.8	82.2	123.4
192	18.0	14.3	21.5

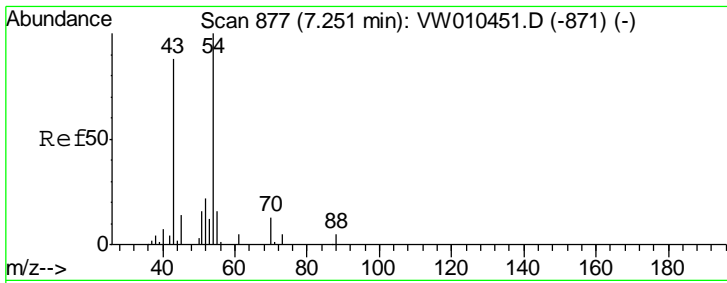


#36  
 1,1-Dichloropropene  
 Concen: 4.527 ug/l  
 RT: 7.95 min Scan# 992  
 Delta R.T. -0.13 min  
 Lab File: VW010642.D  
 Acq: 31 May 2019 17:46

Tgt Ion	Resp	Lower	Upper
75	12061		
75	100		
110	9.4	19.2	57.6#
77	0.0	25.2	37.8#



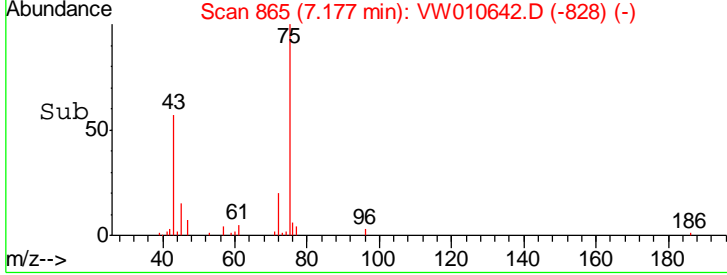
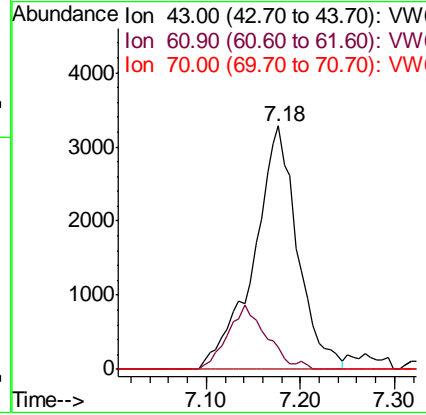
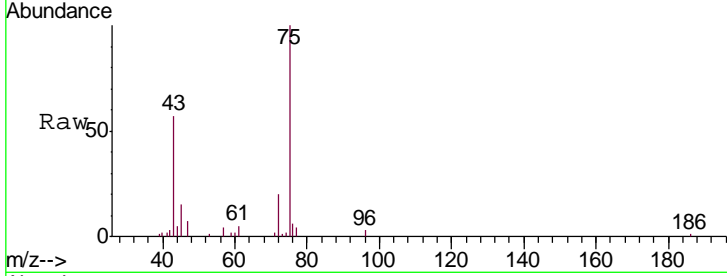




#37  
 Ethyl Acetate  
 Concen: 9.399 ug/l  
 RT: 7.18 min Scan# 865  
 Delta R.T. -0.07 min  
 Lab File: VW010642.D  
 Acq: 31 May 2019 17:46

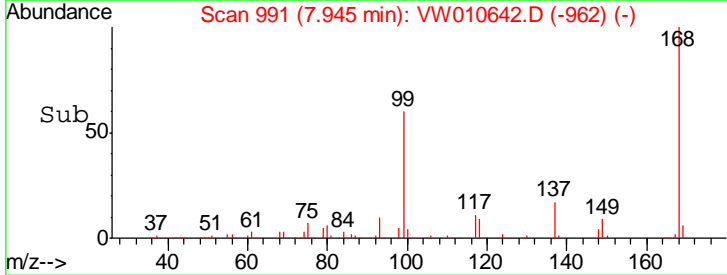
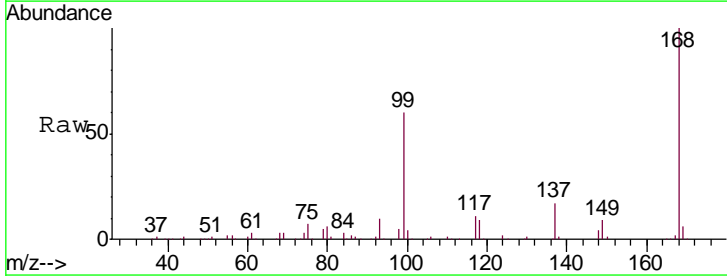
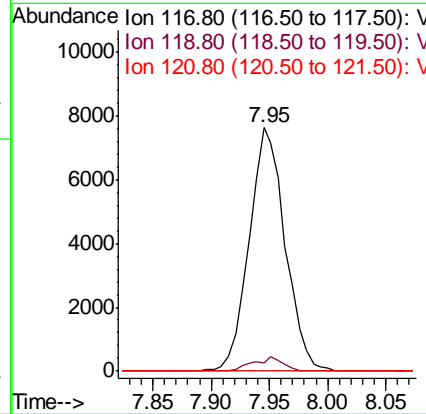
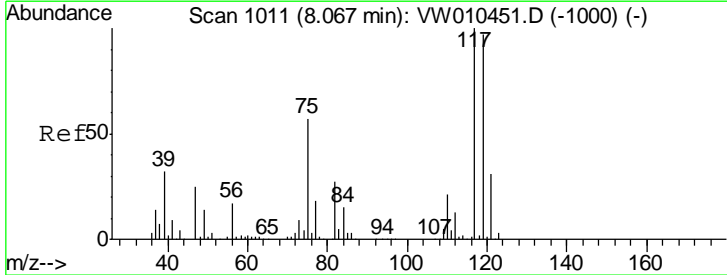
**Instrument :**  
 MSVOA\_W  
**ClientSampled :**  
 0439-PR-2(PASSAIC)

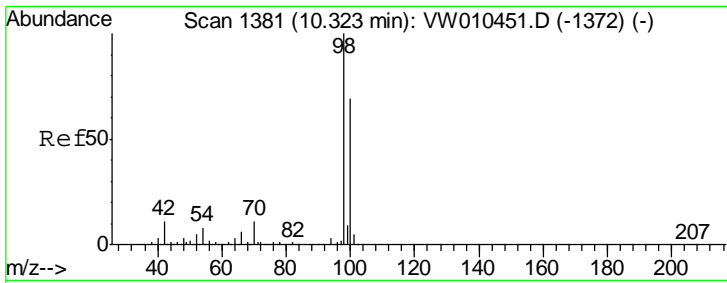
Tgt Ion	Resp	Lower	Upper
43	10648		
61	0.0	11.2	16.8#
70	0.0	9.9	14.9#



#38  
 Carbon Tetrachloride  
 Concen: 5.682 ug/l  
 RT: 7.95 min Scan# 991  
 Delta R.T. -0.12 min  
 Lab File: VW010642.D  
 Acq: 31 May 2019 17:46

Tgt Ion	Resp	Lower	Upper
117	16329		
119	3.5	77.4	116.0#
121	0.0	25.0	37.6#

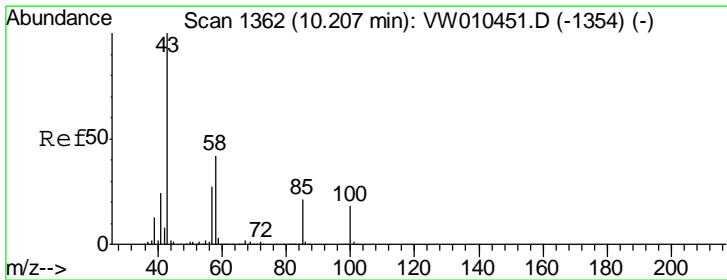
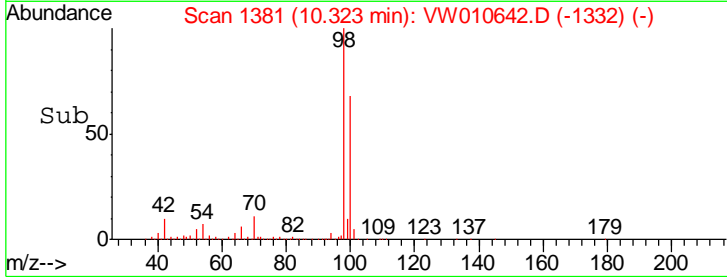
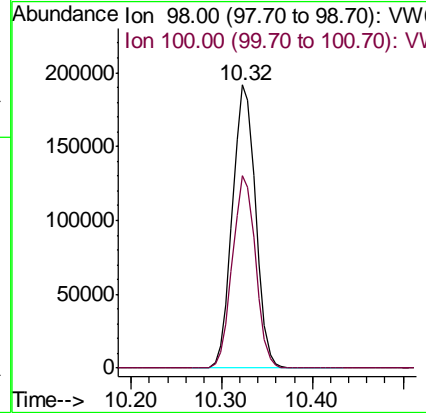
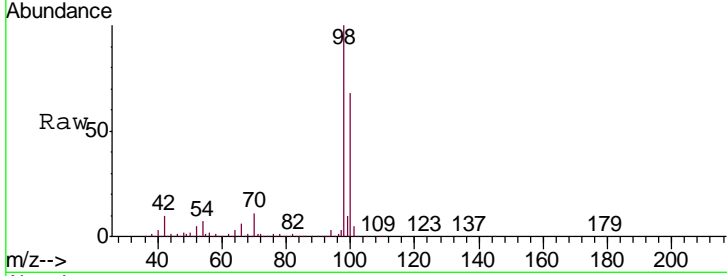




#50  
 Toluene-d8  
 Concen: 51.362 ug/l  
 RT: 10.32 min Scan# 1381  
 Delta R.T. -0.00 min  
 Lab File: VW010642.D  
 Acq: 31 May 2019 17:46

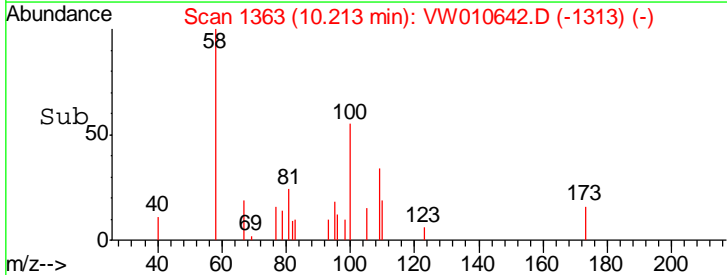
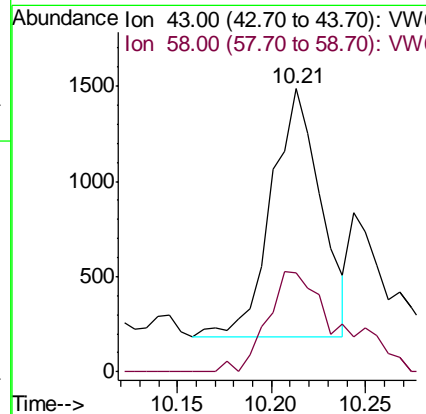
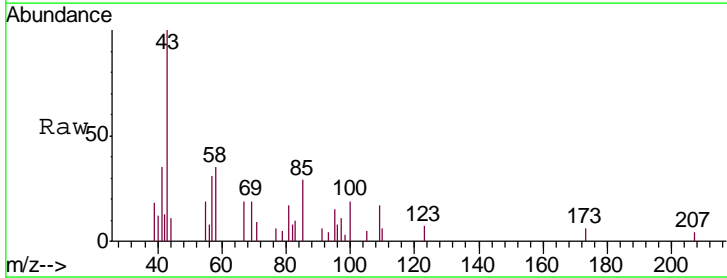
Instrument :  
 MSVOA\_W  
 ClientSampled :  
 0439-PR-2(PASSAIC)

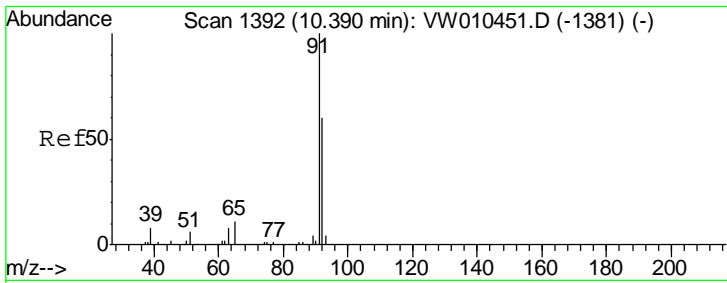
Tgt Ion: 98 Resp: 340503  
 Ion Ratio Lower Upper  
 98 100  
 100 67.6 53.7 80.5



#51  
 4-Methyl-2-Pentanone  
 Concen: 2.076 ug/l  
 RT: 10.21 min Scan# 1363  
 Delta R.T. 0.01 min  
 Lab File: VW010642.D  
 Acq: 31 May 2019 17:46

Tgt Ion: 43 Resp: 2381  
 Ion Ratio Lower Upper  
 43 100  
 58 58.3 33.2 49.8#

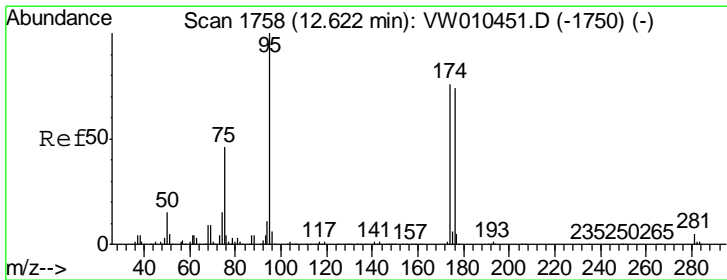
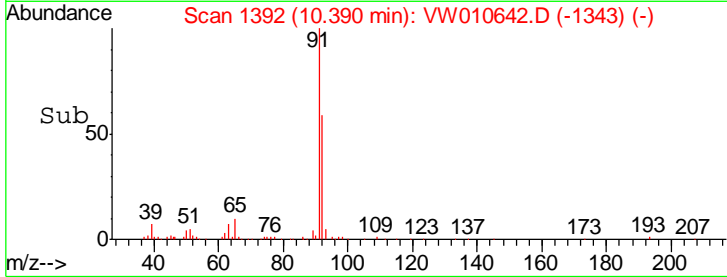
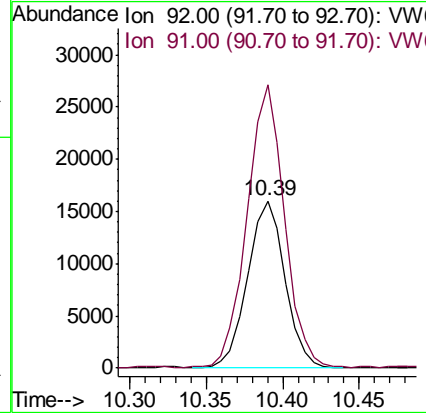
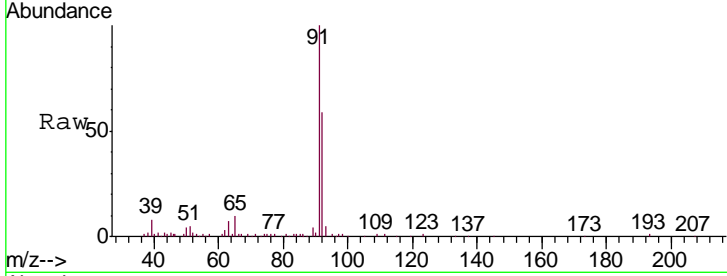




#52  
 Toluene  
 Concen: 5.477 ug/l  
 RT: 10.39 min Scan# 1392  
 Delta R.T. -0.00 min  
 Lab File: VW010642.D  
 Acq: 31 May 2019 17:46

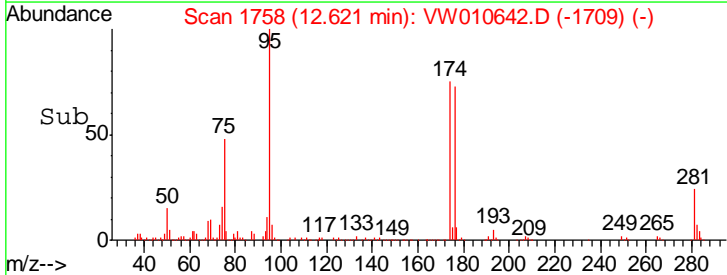
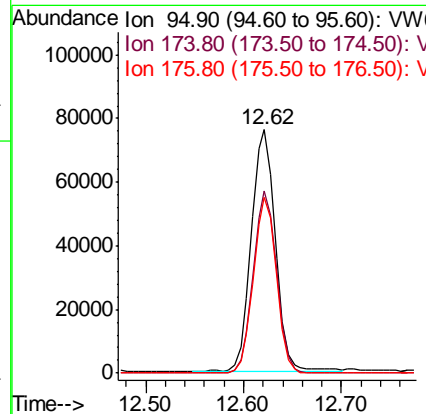
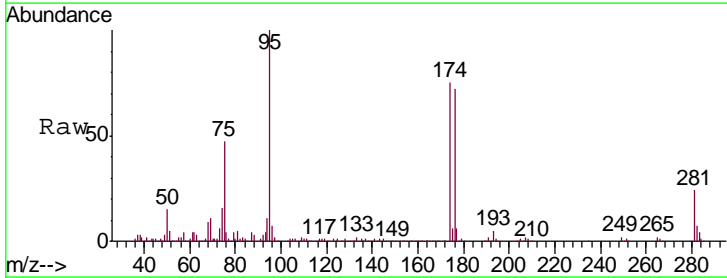
Instrument :  
 MSVOA\_W  
 ClientSampled :  
 0439-PR-2(PASSAIC)

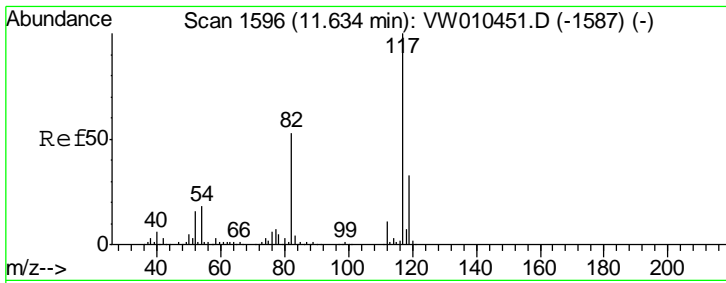
Tgt Ion: 92 Resp: 27236  
 Ion Ratio Lower Upper  
 92 100  
 91 167.8 135.4 203.0



#62  
 4-Bromofluorobenzene  
 Concen: 49.029 ug/l  
 RT: 12.62 min Scan# 1758  
 Delta R.T. -0.00 min  
 Lab File: VW010642.D  
 Acq: 31 May 2019 17:46

Tgt Ion: 95 Resp: 129467  
 Ion Ratio Lower Upper  
 95 100  
 174 72.9 0.0 148.6  
 176 69.5 0.0 144.2

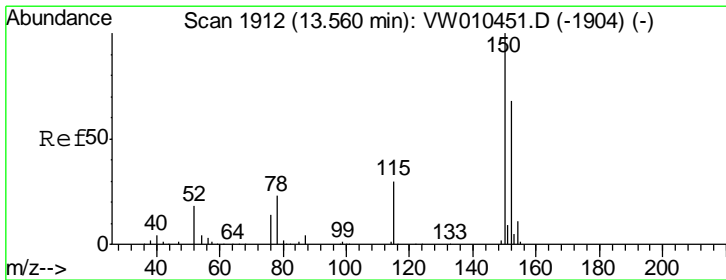
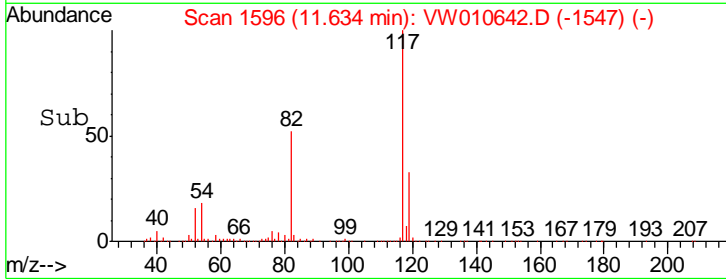
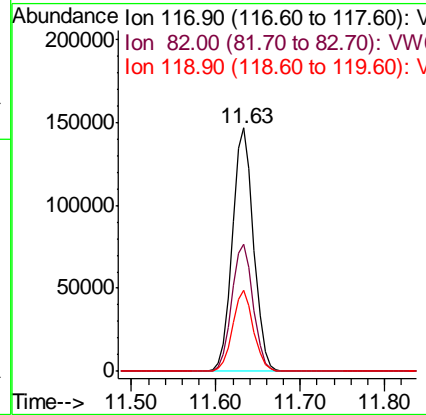
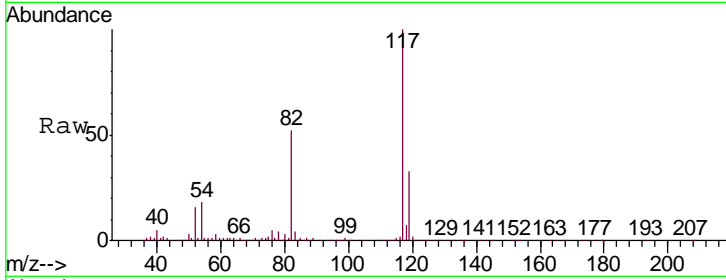




#63  
 Chlorobenzene-d5  
 Concen: 50.000 ug/l  
 RT: 11.63 min Scan# 1596  
 Delta R.T. -0.00 min  
 Lab File: VW010642.D  
 Acq: 31 May 2019 17:46

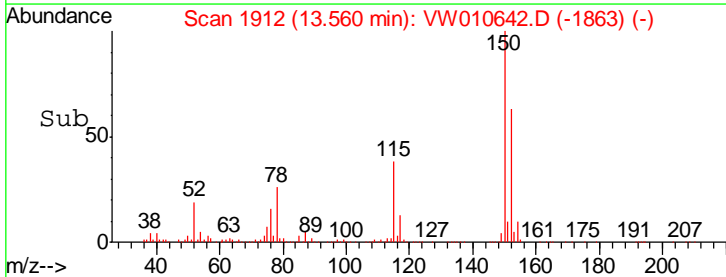
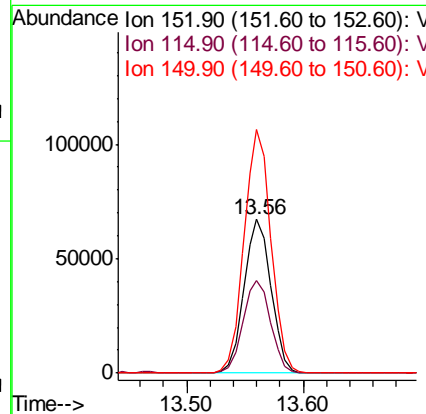
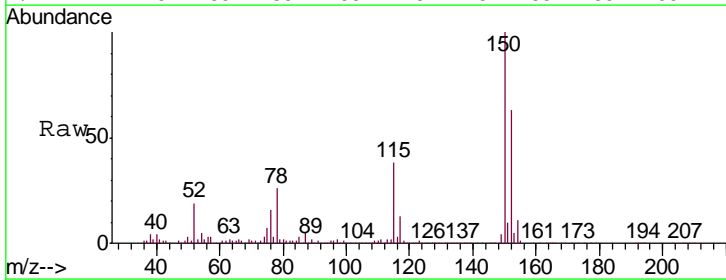
Instrument :  
 MSVOA\_W  
 ClientSampled :  
 0439-PR-2(PASSAIC)

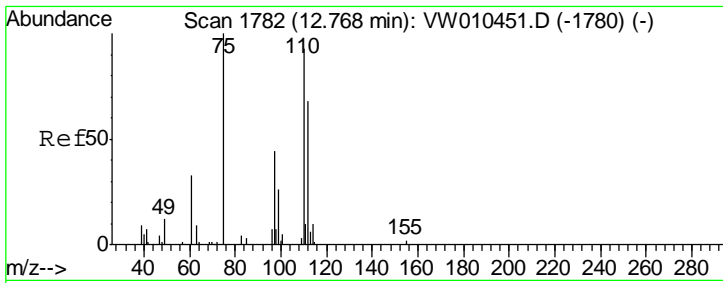
Tgt Ion	Resp	Lower	Upper
117	250022		
82	52.3	42.8	64.2
119	33.2	26.3	39.5



#72  
 1,4-Dichlorobenzene-d4  
 Concen: 50.000 ug/l  
 RT: 13.56 min Scan# 1912  
 Delta R.T. -0.00 min  
 Lab File: VW010642.D  
 Acq: 31 May 2019 17:46

Tgt Ion	Resp	Lower	Upper
152	108560		
115	60.6	30.3	91.0
150	157.3	0.0	349.8

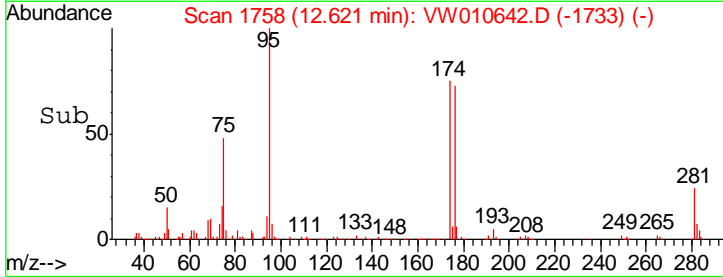
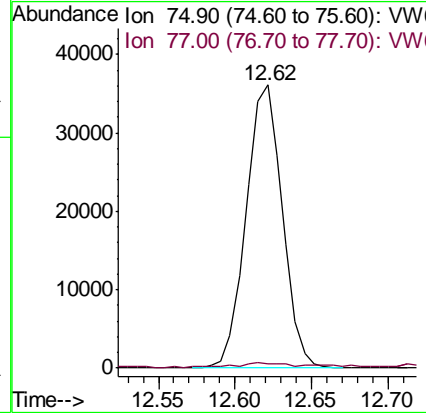
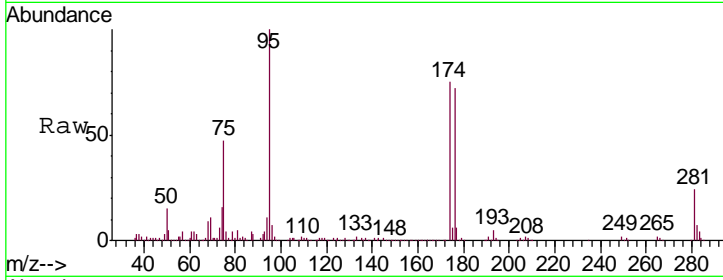




#76  
 1,2,3-Trichloropropane  
 Concen: 53.872 ug/l  
 RT: 12.62 min Scan# 1758  
 Delta R.T. -0.15 min  
 Lab File: VW010642.D  
 Acq: 31 May 2019 17:46

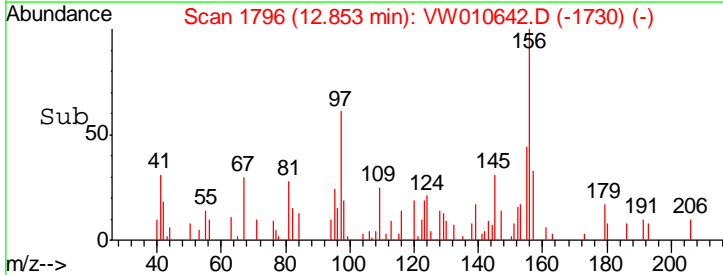
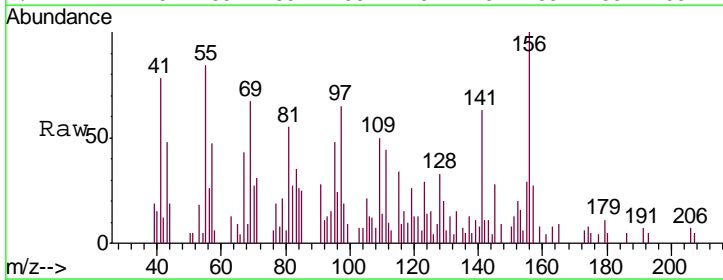
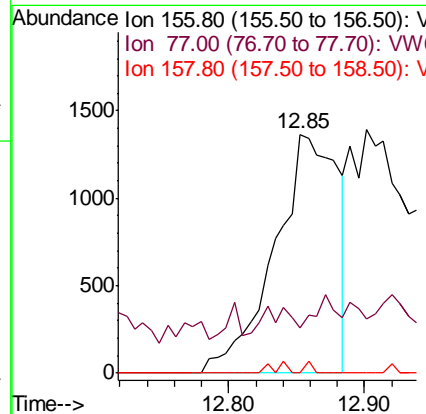
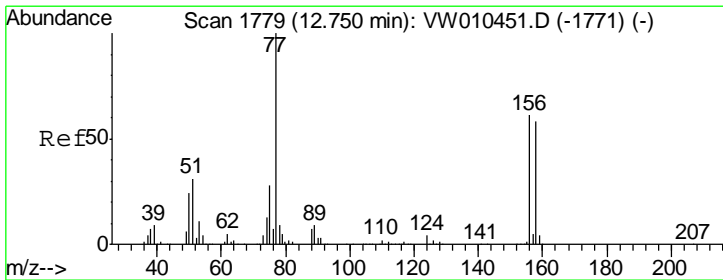
Instrument :  
 MSVOA\_W  
 ClientSampled :  
 0439-PR-2(PASSAIC)

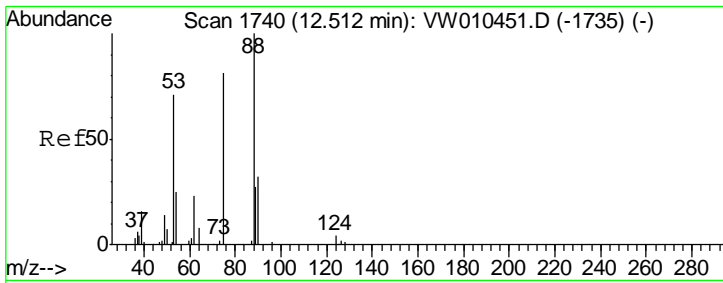
Tgt Ion: 75 Resp: 59364  
 Ion Ratio Lower Upper  
 75 100  
 77 2.3 170.0 510.1#



#77  
 Bromobenzene  
 Concen: 2.282 ug/l  
 RT: 12.85 min Scan# 1796  
 Delta R.T. 0.10 min  
 Lab File: VW010642.D  
 Acq: 31 May 2019 17:46

Tgt Ion: 156 Resp: 4399  
 Ion Ratio Lower Upper  
 156 100  
 77 6.5 92.4 277.2#  
 158 0.5 48.3 144.8#

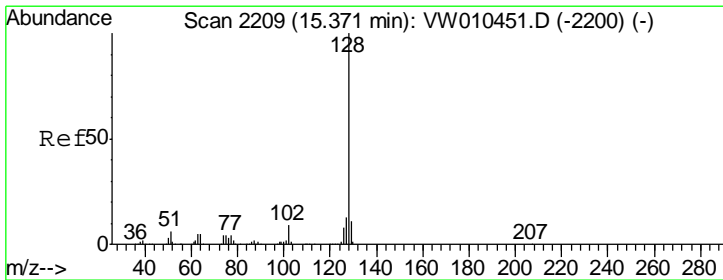
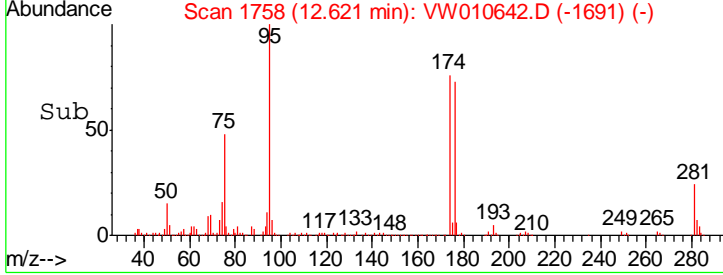
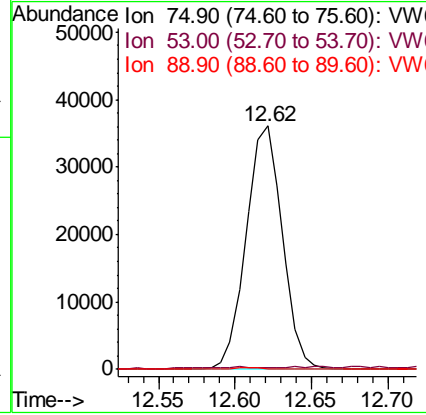
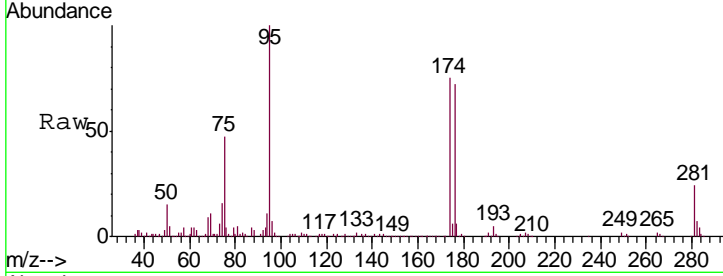




#81  
 trans-1,4-Dichloro-2-butene  
 Concen: 112.432 ug/l  
 RT: 12.62 min Scan# 1758  
 Delta R.T. 0.11 min  
 Lab File: VW010642.D  
 Acq: 31 May 2019 17:46

Instrument :  
 MSVOA\_W  
 ClientSampleId :  
 0439-PR-2(PASSAIC)

Tgt Ion	Resp	Lower	Upper
75	100		
53	1.1	69.8	104.8#
89	0.5	39.5	59.3#



#95  
 Naphthalene  
 Concen: 3.634 ug/l  
 RT: 15.37 min Scan# 2209  
 Delta R.T. -0.00 min  
 Lab File: VW010642.D  
 Acq: 31 May 2019 17:46

Tgt Ion	Resp	Lower	Upper
128	100		
127	16.7	10.6	15.8#
129	12.7	8.9	13.3

