

Data Path : Z:\VOASRV\HPCHEM1\MSVOA_W\DATA\VW060820\
 Data File : VW015561.D
 Acq On : 08 Jun 2020 17:10
 Operator : SY/VA
 Sample : L2848-13RE
 Misc : 4.13G/10ML/MSVOA_W/SOIL
 ALS Vial : 1 Sample Multiplier: 1

Instrument :
 MSVOA_W
 ClientSampleId :
 C0AG8RE

Integration Parameters: LSCINT.P

Integrator: RTE
 Smoothing : OFF
 Sampling : 1
 Start Thrs: 0.2
 Stop Thrs : 0

Filtering: 5
 Min Area: 0 % of largest Peak
 Max Peaks: 100
 Peak Location: TOP

If leading or trailing edge < 100 prefer < Baseline drop else tangent >
 Peak separation: 5

Method : Z:\VOASRV\HPCHEM1\MSVOA_W\METHOD\SOM2WLM052620S.M
 Title : VOC Analysis

Signal : TIC

peak #	R.T. min	first scan	max scan	last scan	PK TY	peak height	corr. area	corr. % max.	% of total
1	2.355	68	74	86	rVB	98901	178396	0.20%	0.190%
2	2.891	156	162	179	rVB	60340	152060	0.17%	0.162%
3	4.013	335	346	364	rBV	131345	389443	0.44%	0.414%
4	4.428	405	414	426	rBV3	1164	4663	0.01%	0.005%
5	4.550	432	434	436	rVB	157	127	0.00%	0.000%
6	4.781	470	472	473	rVB	212	124	0.00%	0.000%
7	4.916	483	494	507	rBV	14988	48507	0.05%	0.052%
8	5.263	548	551	552	rVB2	223	200	0.00%	0.000%
9	5.354	565	566	569	rBV2	183	138	0.00%	0.000%
10	5.391	569	572	573	rBV2	133	133	0.00%	0.000%
11	5.422	575	577	580	rVB	196	168	0.00%	0.000%
12	5.635	609	612	614	rBV2	129	139	0.00%	0.000%
13	5.769	632	634	635	rBV2	190	122	0.00%	0.000%
14	5.940	653	662	673	rVB3	3072	9254	0.01%	0.010%
15	6.092	685	687	690	rVB	188	162	0.00%	0.000%
16	6.123	690	692	693	rVV	155	123	0.00%	0.000%
17	6.318	721	724	725	rBV2	157	162	0.00%	0.000%
18	6.336	725	727	728	rVB	187	102	0.00%	0.000%
19	6.379	733	734	737	rVB	154	104	0.00%	0.000%
20	6.574	763	766	768	rBV2	125	136	0.00%	0.000%
21	6.903	819	820	822	rBV	120	101	0.00%	0.000%
22	6.927	822	824	827	rBV2	140	129	0.00%	0.000%
23	6.958	827	829	830	rBV2	141	127	0.00%	0.000%
24	7.080	839	849	855	rBV	25429	68205	0.08%	0.073%
25	7.354	893	894	897	rBV2	186	151	0.00%	0.000%
26	7.433	905	907	913	rBV2	144	282	0.00%	0.000%
27	7.537	919	924	925	rBV2	269	324	0.00%	0.000%
28	7.653	932	943	956	rBV	168747	415690	0.47%	0.442%
29	7.805	965	968	970	rVB	192	121	0.00%	0.000%
30	7.848	970	975	976	rBV2	252	391	0.00%	0.000%
31	7.866	976	978	979	rBV2	389	404	0.00%	0.000%
32	7.952	985	992	998	rVB2	1154	2145	0.00%	0.002%
33	8.073	1008	1012	1014	rBV2	88	107	0.00%	0.000%
34	8.171	1026	1028	1031	rVB2	119	138	0.00%	0.000%

Data Path : Z:\VOASRV\HPCHEM1\MSVOA_W\DATA\VW060820\
 Data File : VW015561.D
 Acq On : 08 Jun 2020 17:10
 Operator : SY/VA
 Sample : L2848-13RE
 Misc : 4.13G/10ML/MSVOA_W/SOIL
 ALS Vial : 1 Sample Multiplier: 1

Instrument :
 MSVOA_W
 ClientSampleId :
 C0AG8RE

Integration Parameters: LSCINT.P

Integrator: RTE
 Smoothing : OFF
 Sampling : 1
 Start Thrs: 0.2
 Stop Thrs : 0

Filtering: 5
 Min Area: 0 % of largest Peak
 Max Peaks: 100
 Peak Location: TOP

If leading or trailing edge < 100 prefer < Baseline drop else tangent >
 Peak separation: 5

Method : Z:\VOASRV\HPCHEM1\MSVOA_W\METHOD\SOM2WLM052620S.M
 Title : VOC Analysis

35	8.195	1031	1032	1034	rBV	117	102	0.00%	0.000%
36	8.275	1035	1045	1063	rVV2	324922	969503	1.09%	1.031%
37	8.397	1063	1065	1070	rVV	511	596	0.00%	0.001%
38	8.494	1077	1081	1084	rBV2	151	275	0.00%	0.000%
39	8.573	1092	1094	1096	rVB	186	125	0.00%	0.000%
40	8.622	1100	1102	1103	rBV	334	226	0.00%	0.000%
41	8.695	1110	1114	1118	rBV2	261	437	0.00%	0.000%
42	8.738	1119	1121	1124	rVB2	177	165	0.00%	0.000%
43	8.842	1130	1138	1151	rVV	308300	627634	0.71%	0.668%
44	8.939	1151	1154	1155	rVV2	233	217	0.00%	0.000%
45	8.982	1159	1161	1163	rBV	102	103	0.00%	0.000%
46	9.055	1168	1173	1174	rBV2	391	578	0.00%	0.001%
47	9.092	1174	1179	1188	rVB3	4056	7990	0.01%	0.008%
48	9.274	1201	1209	1226	rVV	217491	437886	0.49%	0.466%
49	9.415	1230	1232	1235	rVB2	111	123	0.00%	0.000%
50	9.439	1235	1236	1239	rBV	245	152	0.00%	0.000%
51	9.573	1254	1258	1260	rBV	231	226	0.00%	0.000%
52	9.665	1269	1273	1278	rVB3	273	316	0.00%	0.000%
53	9.762	1287	1289	1292	rVB2	119	156	0.00%	0.000%
54	9.890	1308	1310	1314	rVB2	168	203	0.00%	0.000%
55	9.933	1314	1317	1321	rBV2	204	339	0.00%	0.000%
56	10.037	1325	1334	1346	rBV	109260	197755	0.22%	0.210%
57	10.122	1346	1348	1350	rVB2	255	220	0.00%	0.000%
58	10.177	1354	1357	1359	rVB2	190	160	0.00%	0.000%
59	10.207	1359	1362	1364	rBV2	354	394	0.00%	0.000%
60	10.323	1374	1381	1389	rBV	368004	661312	0.75%	0.704%
61	10.427	1397	1398	1400	rVB	272	152	0.00%	0.000%
62	10.494	1403	1409	1410	rBV3	541	827	0.00%	0.001%
63	10.579	1416	1423	1432	rVB	63623	108056	0.12%	0.115%
64	10.707	1438	1444	1450	rVV	11825	20215	0.02%	0.022%
65	10.866	1460	1470	1479	rBV2	40164057	88683434	100.00%	94.342%
66	11.378	1552	1554	1555	rBV	445	218	0.00%	0.000%
67	11.439	1559	1564	1570	rVB	7875	12676	0.01%	0.013%
68	11.634	1588	1596	1606	rBV	280641	454573	0.51%	0.484%
69	11.731	1608	1612	1617	rVB3	3194	4873	0.01%	0.005%
70	12.152	1677	1681	1682	rBV3	184	259	0.00%	0.000%
71	12.219	1690	1692	1693	rBV	197	115	0.00%	0.000%

Data Path : Z:\VOASRV\HPCHEM1\MSVOA_W\DATA\VW060820\
 Data File : VW015561.D
 Acq On : 08 Jun 2020 17:10
 Operator : SY/VA
 Sample : L2848-13RE
 Misc : 4.13G/10ML/MSVOA_W/SOIL
 ALS Vial : 1 Sample Multiplier: 1

Instrument :
 MSVOA_W
 ClientSampleId :
 C0AG8RE

Integration Parameters: LSCINT.P

Integrator: RTE
 Smoothing : OFF Filtering: 5
 Sampling : 1 Min Area: 0 % of largest Peak
 Start Thrs: 0.2 Max Peaks: 100
 Stop Thrs : 0 Peak Location: TOP

If leading or trailing edge < 100 prefer < Baseline drop else tangent >
 Peak separation: 5

Method : Z:\VOASRV\HPCHEM1\MSVOA_W\METHOD\SOM2WLM052620S.M
 Title : VOC Analysis

72	12.353	1710	1714	1717	rVB3	290	337	0.00%	0.000%
73	12.457	1729	1731	1733	rBV2	218	229	0.00%	0.000%
74	12.506	1738	1739	1742	rBV2	173	176	0.00%	0.000%
75	12.609	1750	1756	1763	rVB	22458	36742	0.04%	0.039%
76	12.695	1763	1770	1777	rBV	88174	142249	0.16%	0.151%
77	12.762	1777	1781	1787	rVV4	1253	2348	0.00%	0.002%
78	12.829	1790	1792	1793	rBV	196	150	0.00%	0.000%
79	12.859	1795	1797	1800	rVB	368	256	0.00%	0.000%
80	12.932	1804	1809	1817	rVV2	3895	6241	0.01%	0.007%
81	12.999	1818	1820	1824	rVV3	219	156	0.00%	0.000%
82	13.042	1825	1827	1828	rVB	216	109	0.00%	0.000%
83	13.115	1837	1839	1843	rBV3	254	292	0.00%	0.000%
84	13.176	1847	1849	1851	rBV	368	305	0.00%	0.000%
85	13.255	1857	1862	1863	rBV3	277	392	0.00%	0.000%
86	13.298	1863	1869	1874	rVB2	7435	11806	0.01%	0.013%
87	13.384	1881	1883	1884	rBV	333	287	0.00%	0.000%
88	13.505	1901	1903	1905	rBV3	366	380	0.00%	0.000%
89	13.560	1905	1912	1919	rVV	107196	170716	0.19%	0.182%
90	13.652	1924	1927	1933	rVB4	1424	2287	0.00%	0.002%
91	13.725	1938	1939	1941	rVB2	242	156	0.00%	0.000%
92	13.853	1954	1960	1968	rBV	74038	126767	0.14%	0.135%
93	13.950	1973	1976	1978	rVV4	491	477	0.00%	0.001%
94	13.987	1980	1982	1984	rBV2	323	316	0.00%	0.000%
95	14.072	1991	1996	2004	rVB2	9241	14984	0.02%	0.016%
96	14.335	2031	2039	2042	rBV5	2041	3748	0.00%	0.004%
97	14.725	2096	2103	2109	rBV5	1806	3197	0.00%	0.003%
98	14.828	2119	2120	2121	rBV	305	183	0.00%	0.000%
99	15.438	2215	2220	2227	rVB	7179	11138	0.01%	0.012%
100	16.218	2347	2348	2352	rBV3	382	494	0.00%	0.001%

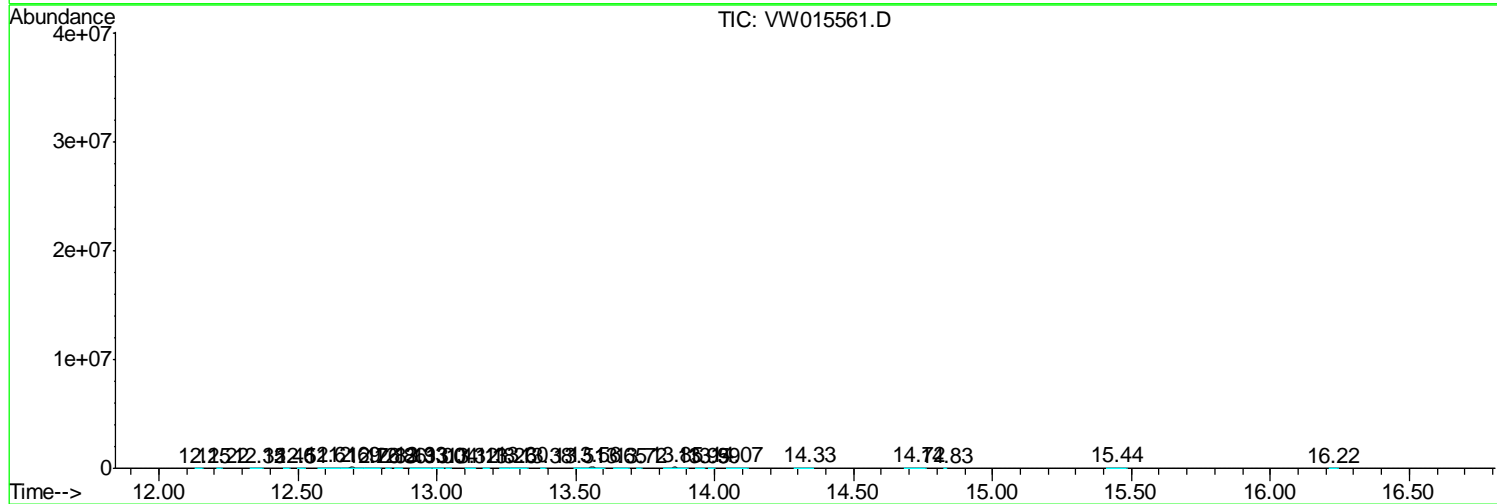
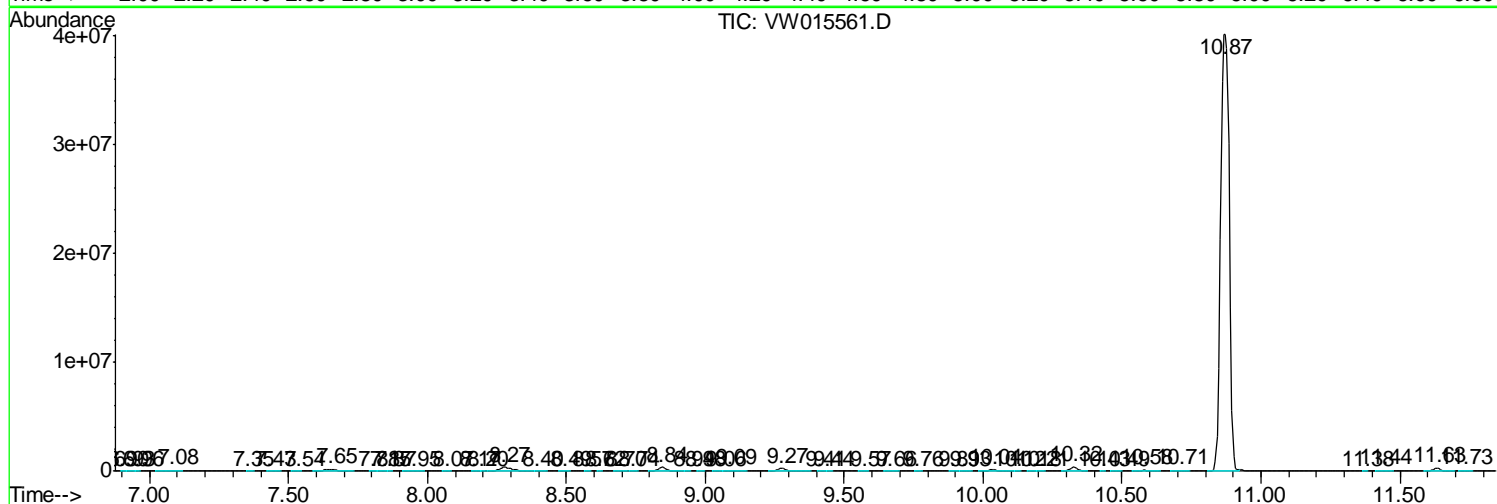
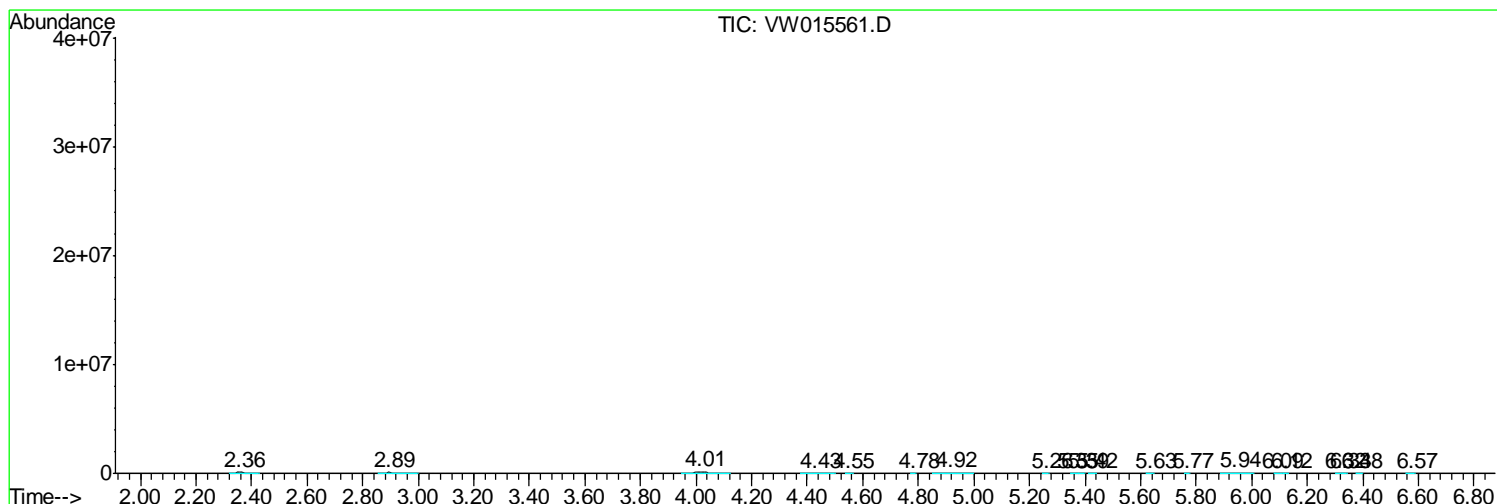
Sum of corrected areas: 94002087

Data Path : Z:\VOASRV\HPCHEM1\MSVOA_W\DATA\VW060820\
 Data File : VW015561.D
 Acq On : 08 Jun 2020 17:10
 Operator : SY/VA
 Sample : L2848-13RE
 Misc : 4.13G/10ML/MSVOA_W/SOIL
 ALS Vial : 1 Sample Multiplier: 1

Instrument :
 MSVOA_W
 ClientSampleId :
 C0AG8RE

Quant Method : Z:\VOASRV\HPCHEM1\MSVOA_W\METHOD\SOM2WLM052620S.M
 Quant Title : VOC Analysis

TIC Library : C:\DATABASE\NIST11.L
 TIC Integration Parameters: LSCINT.P



Data Path : Z:\VOASRV\HPCHEM1\MSVOA_W\DATA\VW060820\
 Data File : VW015561.D
 Acq On : 08 Jun 2020 17:10
 Operator : SY/VA
 Sample : L2848-13RE
 Misc : 4.13G/10ML/MSVOA_W/SOIL
 ALS Vial : 1 Sample Multiplier: 1

Instrument :
 MSVOA_W
 ClientSampled :
 C0AG8RE

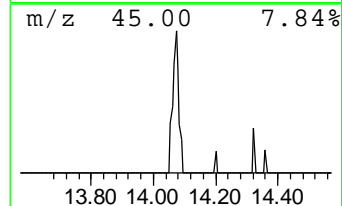
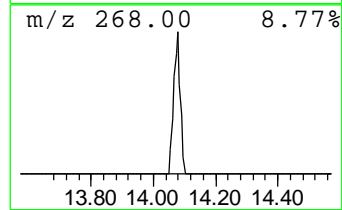
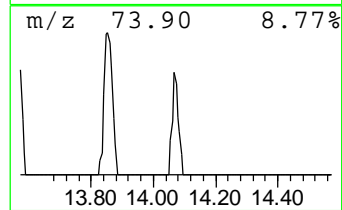
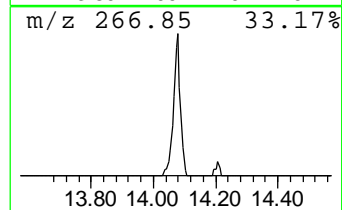
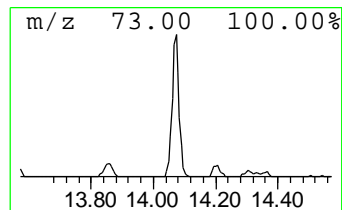
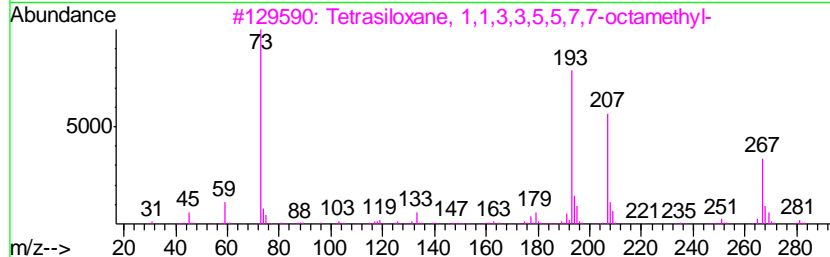
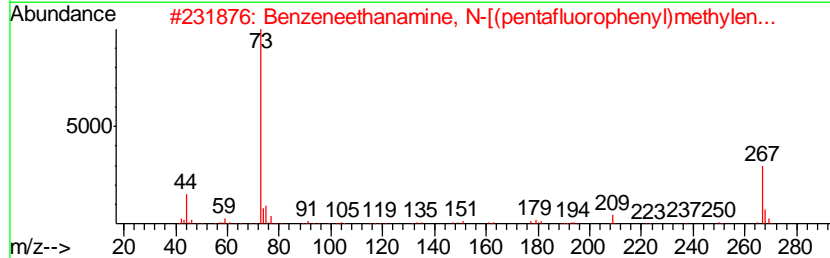
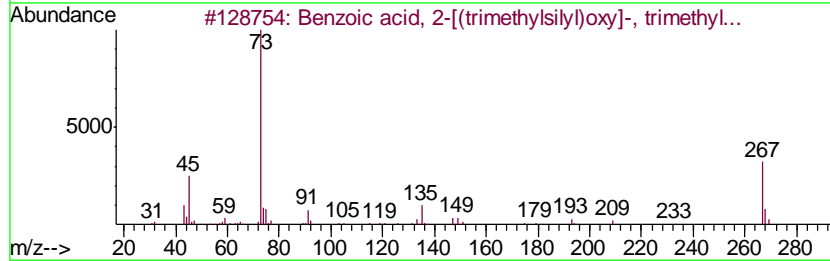
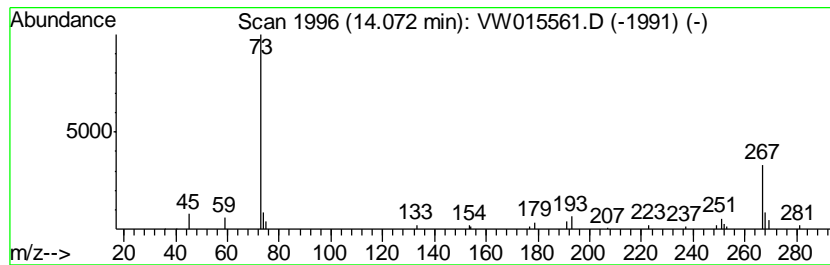
Quant Method : Z:\VOASRV\HPCHEM1\MSVOA_W\METHOD\SOM2WLM052620S.M
 Quant Title : VOC Analysis

TIC Library : C:\DATABASE\NIST11.L
 TIC Integration Parameters: LSCINT.P

 Peak Number 4 unknown-01 Concentration Rank 3

R.T.	EstConc	Area	Relative to ISTD	R.T.
14.07	2.19 ug/L	14984	1,4-Dichlorobenzene-d4	13.56

Hit#	of	Tentative ID	MW	MolForm	CAS#	Qual
1	5	Benzoic acid, 2-[(trimethylsilyl)oxy]-, trimethyl...	282	C13H22O3Si2	003789-85-3	45
2		Benzenethanamine, N-[(pentafluorophenyl)methyl]...	475	C21H26F5NO2Si2	055429-85-1	42
3		Tetrasiloxane, 1,1,3,3,5,5,7,7-octamethyl-	282	C8H26O3Si4	001000-05-1	38
4		Benzoic acid, 2-[(trimethylsilyl)oxy]-, trimethyl...	282	C13H22O3Si2	003789-85-3	38
5		11H-Dibenzo[b,e][1,4]diazepin-11-one	267	C16H17N3O	013450-73-2	22



Data Path : Z:\VOASRV\HPCHEM1\MSVOA_W\DATA\VW060820\
 Data File : VW015561.D
 Acq On : 08 Jun 2020 17:10
 Operator : SY/VA
 Sample : L2848-13RE
 Misc : 4.13G/10ML/MSVOA_W/SOIL
 ALS Vial : 1 Sample Multiplier: 1

Instrument :
 MSVOA_W
 ClientSampleID :
 C0AG8RE

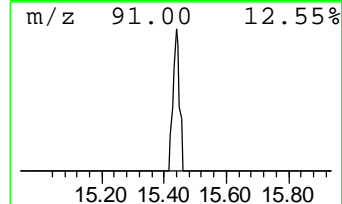
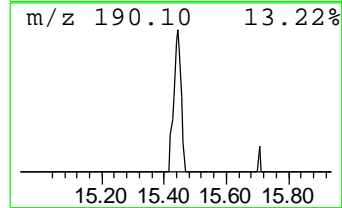
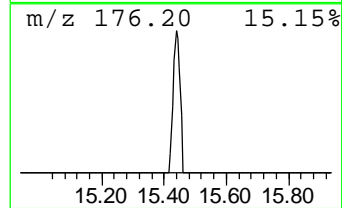
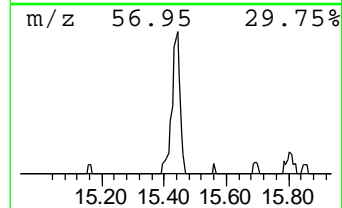
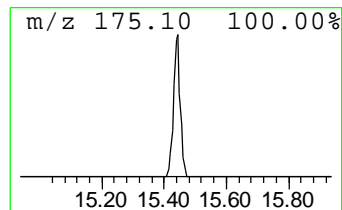
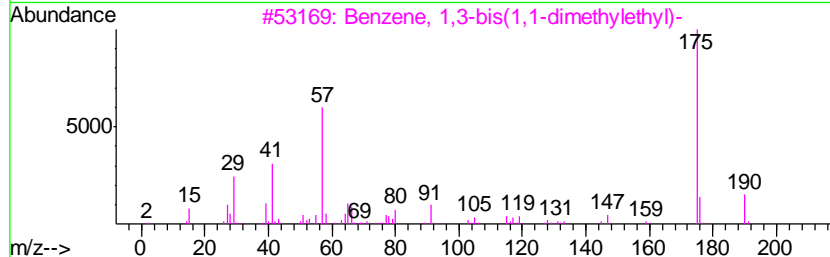
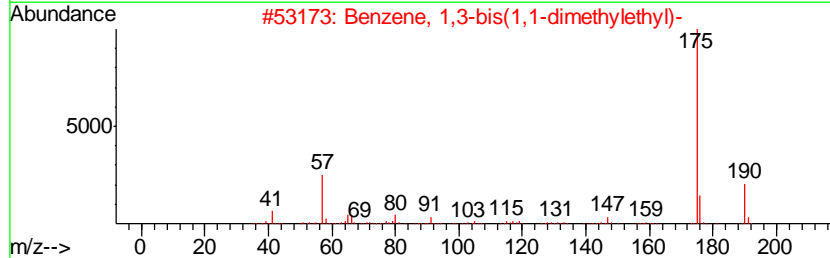
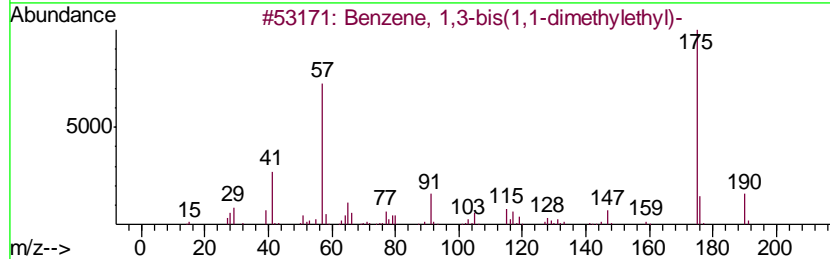
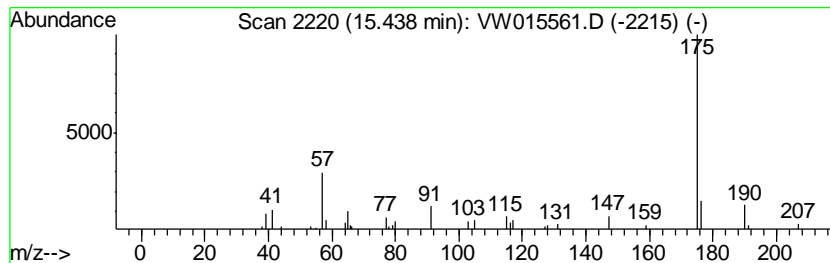
Quant Method : Z:\VOASRV\HPCHEM1\MSVOA_W\METHOD\SOM2WLM052620S.M
 Quant Title : VOC Analysis

TIC Library : C:\DATABASE\NIST11.L
 TIC Integration Parameters: LSCINT.P

 Peak Number 5 Benzene, 1,3-bis(1,1-dimeth... Concentration Rank 5

R.T.	EstConc	Area	Relative to ISTD	R.T.
15.44	1.63 ug/L	11138	1,4-Dichlorobenzene-d4	13.56

Hit#	of	Tentative ID	MW	MolForm	CAS#	Qual
1	5	Benzene, 1,3-bis(1,1-dimethyleth...	190	C14H22	001014-60-4	93
2		Benzene, 1,3-bis(1,1-dimethyleth...	190	C14H22	001014-60-4	83
3		Benzene, 1,3-bis(1,1-dimethyleth...	190	C14H22	001014-60-4	72
4		Benzene, 1,4-bis(1,1-dimethyleth...	190	C14H22	001012-72-2	72
5		Benzenepropanal, 4-(1,1-dimethyl...	190	C13H18O	018127-01-0	72



Data Path : Z:\VOASRV\HPCHEM1\MSVOA_W\DATA\VW060820\
Data File : VW015561.D
Acq On : 08 Jun 2020 17:10
Operator : SY/VA
Sample : L2848-13RE
Misc : 4.13G/10ML/MSVOA_W/SOIL
ALS Vial : 1 Sample Multiplier: 1

Instrument :
MSVOA_W
ClientSampleId :
C0AG8RE

Quant Method : Z:\VOASRV\HPCHEM1\MSVOA_W\METHOD\SOM2WLM052620S.M
Quant Title : VOC Analysis

TIC Library : C:\DATABASE\NIST11.L
TIC Integration Parameters: LSCINT.P

TIC Top Hit name	RT	EstConc	Units	Response	--Internal Standard--			
					#	RT	Resp	Conc
unknown-01	14.07	2.2	ug/L	14984	3	13.56	170716	25.0
Benzene, 1,3-bis(...	15.44	1.6	ug/L	11138	3	13.56	170716	25.0