

Data Path : Z:\voasrv\HPCHEM1\MSVOA_W\Data\VW061421\
 Data File : VW019206.D
 Acq On : 14 Jun 2021 11:04
 Operator : SY/VA
 Sample : M2680-08RE
 Misc : 5.25G/10ML/MSVOA_W/SOIL
 ALS Vial : 4 Sample Multiplier: 1

Instrument :
 MSVOA_W
 ClientSampled :
 BGD34

Quant Time: Jun 15 01:17:37 2021
 Quant Method : Z:\voasrv\HPCHEM1\MSVOA_W\Method\SFAMWLM060221SMA.M
 Quant Title : SFAM01.0
 QLast Update : Tue Jun 15 01:16:33 2021
 Response via : Initial Calibration

Compound	R.T.	QIon	Response	Conc	Units	Dev(Min)

Internal Standards						
1) 1,4-Difluorobenzene	8.842	114	624964	25.000	ug/L	0.00
28) Chlorobenzene-d5	11.634	117	561688	25.000	ug/L	0.00
58) 1,4-Dichlorobenzene-d4	13.560	152	245858	25.000	ug/L	0.00
System Monitoring Compounds						
4) Vinyl Chloride-d3	2.355	65	182989	22.143	ug/L	0.00
Spiked Amount	25.000	Range 30 - 150	Recovery =	88.560%		
7) Chloroethane-d5	2.892	69	151611	21.540	ug/L	0.00
Spiked Amount	25.000	Range 30 - 150	Recovery =	86.160%		
11) 1,1-Dichloroethene-d2	4.019	63	268073	16.327	ug/L	0.00
Spiked Amount	25.000	Range 45 - 110	Recovery =	65.320%		
21) 2-Butanone-d5	7.086	46	67470	31.168	ug/L	0.00
Spiked Amount	50.000	Range 20 - 135	Recovery =	62.340%		
24) Chloroform-d	7.653	84	376618	22.415	ug/L	0.00
Spiked Amount	25.000	Range 40 - 150	Recovery =	89.640%		
26) 1,2-Dichloroethane-d4	8.305	65	195366	20.729	ug/L	0.00
Spiked Amount	25.000	Range 70 - 130	Recovery =	82.920%		
32) Benzene-d6	8.275	84	767123	23.971	ug/L	0.00
Spiked Amount	25.000	Range 20 - 135	Recovery =	95.880%		
36) 1,2-Dichloropropane-d6	9.275	67	227588	23.459	ug/L	0.00
Spiked Amount	25.000	Range 70 - 120	Recovery =	93.840%		
41) Toluene-d8	10.323	98	680564	23.156	ug/L	0.00
Spiked Amount	25.000	Range 30 - 130	Recovery =	92.640%		
43) trans-1,3-Dichloroprop...	10.579	79	86453	20.575	ug/L	0.00
Spiked Amount	25.000	Range 30 - 135	Recovery =	82.320%		
47) 2-Hexanone-d5	10.927	63	54698	33.248	ug/L	0.00
Spiked Amount	50.000	Range 20 - 135	Recovery =	66.500%		
56) 1,1,2,2-Tetrachloroeth...	12.695	84	144973	18.115	ug/L	0.00
Spiked Amount	25.000	Range 45 - 120	Recovery =	72.480%		
66) 1,2-Dichlorobenzene-d4	13.853	152	192806	22.468	ug/L	0.00
Spiked Amount	25.000	Range 75 - 120	Recovery =	89.880%		

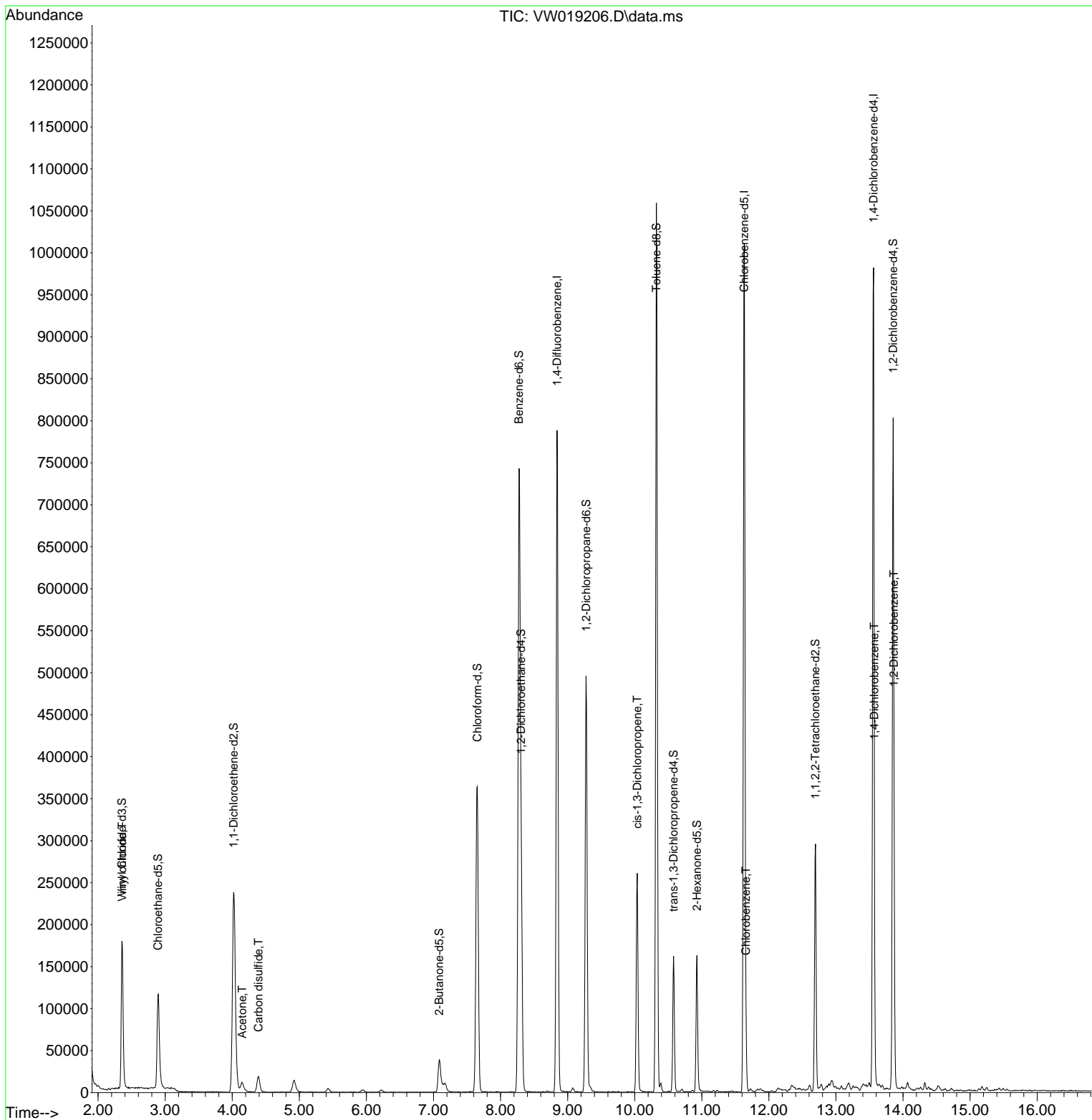
Target Compounds						Qvalue
5) Vinyl chloride	2.361	62	24529	2.147	ug/L #	80
13) Acetone	4.147	43	22952	11.965	ug/L	90
14) Carbon disulfide	4.391	76	43152	1.541	ug/L	98
39) cis-1,3-Dichloropropene	10.037	75	6722	0.478	ug/L #	59
51) Chlorobenzene	11.658	112	24144	0.984	ug/L	94
65) 1,4-Dichlorobenzene	13.573	146	13039	0.794	ug/L	95
67) 1,2-Dichlorobenzene	13.865	146	18989	1.313	ug/L	95

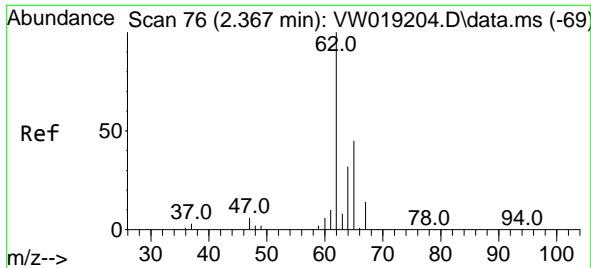
(#) = qualifier out of range (m) = manual integration (+) = signals summed

Data Path : Z:\voasrv\HPCHEM1\MSVOA_W\Data\VW061421\
 Data File : VW019206.D
 Acq On : 14 Jun 2021 11:04
 Operator : SY/VA
 Sample : M2680-08RE
 Misc : 5.25G/10ML/MSVOA_W/SOIL
 ALS Vial : 4 Sample Multiplier: 1

Instrument :
 MSVOA_W
 Client Sampled :
 BGD34

Quant Time: Jun 15 01:17:37 2021
 Quant Method : Z:\voasrv\HPCHEM1\MSVOA_W\Method\SFAMWLM060221SMA.M
 Quant Title : SFAM01.0
 QLast Update : Tue Jun 15 01:16:33 2021
 Response via : Initial Calibration

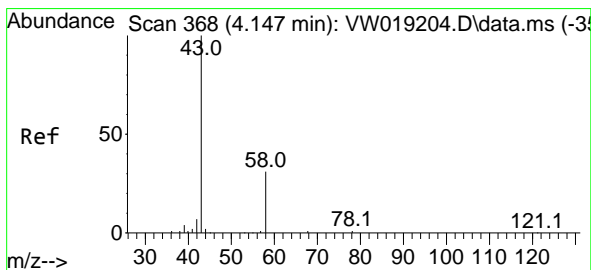
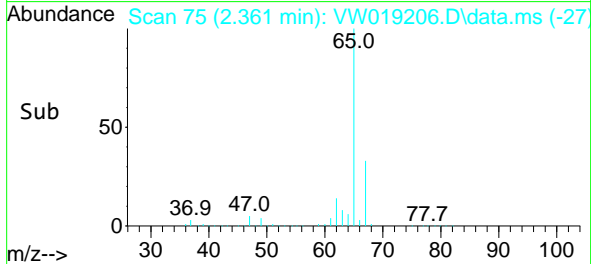
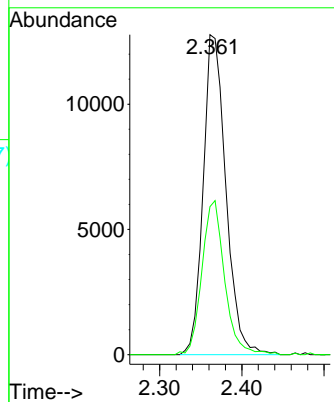
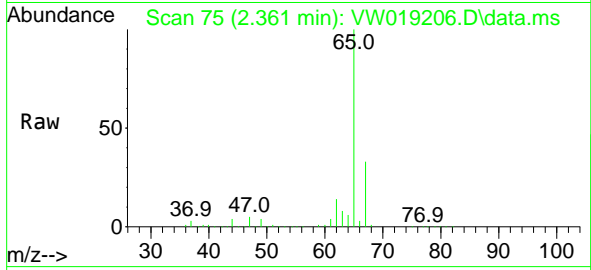




#5
 Vinyl chloride
 Concen: 2.147 ug/L
 RT: 2.361 min Scan# 75
 Delta R.T. -0.006 min
 Lab File: VW019206.D
 Acq: 14 Jun 2021 11:04

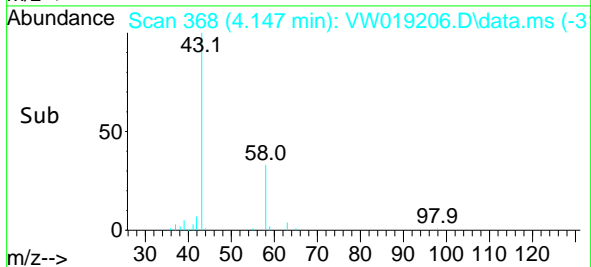
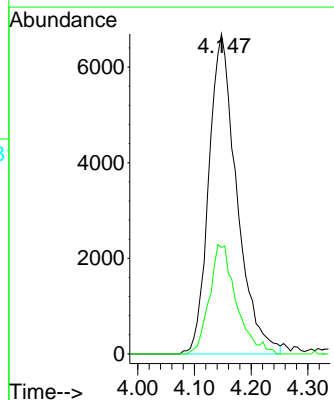
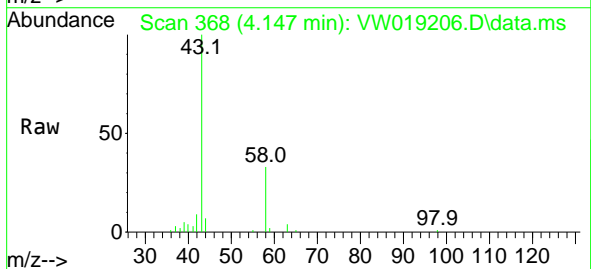
Instrument :
 MSVOA_W
 ClientSampled :
 BGD34

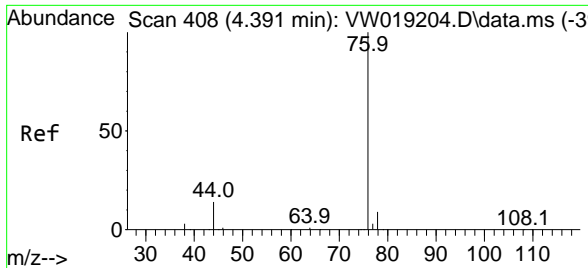
Tgt Ion: 62 Resp: 24529
 Ion Ratio Lower Upper
 62 100
 64 46.3 24.2 45.0#



#13
 Acetone
 Concen: 11.965 ug/L
 RT: 4.147 min Scan# 368
 Delta R.T. 0.000 min
 Lab File: VW019206.D
 Acq: 14 Jun 2021 11:04

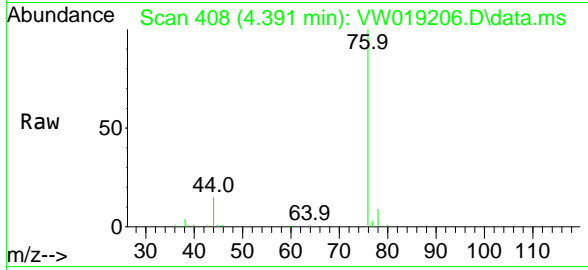
Tgt Ion: 43 Resp: 22952
 Ion Ratio Lower Upper
 43 100
 58 31.9 0.0 53.8



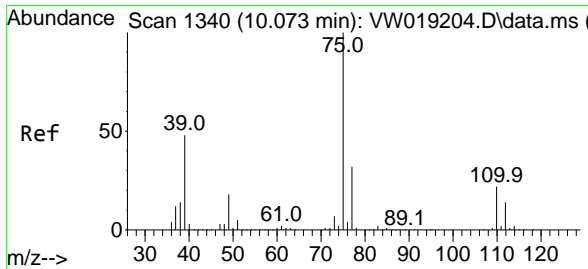
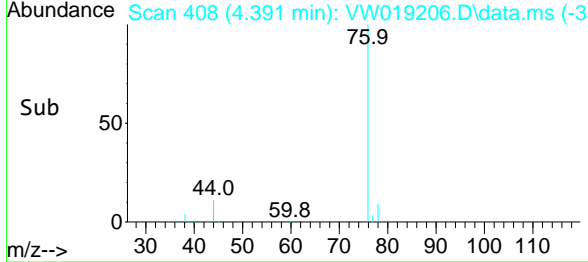
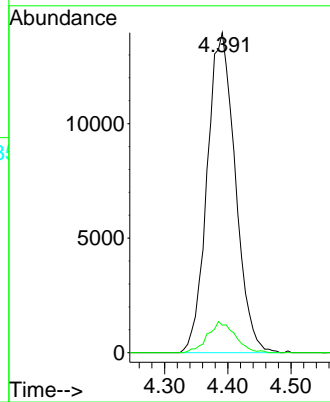


#14
 Carbon disulfide
 Concen: 1.541 ug/L
 RT: 4.391 min Scan# 408
 Delta R.T. 0.000 min
 Lab File: VW019206.D
 Acq: 14 Jun 2021 11:04

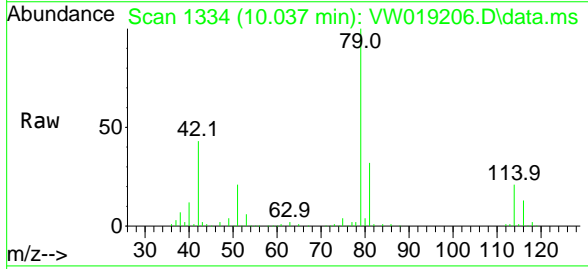
Instrument :
 MSVOA_W
 ClientSampled :
 BGD34



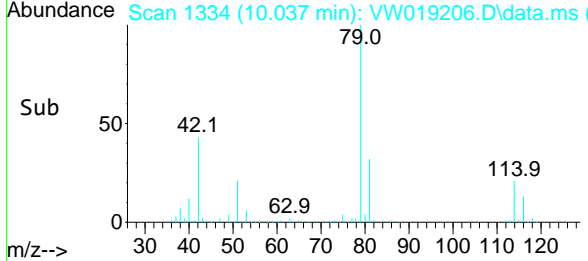
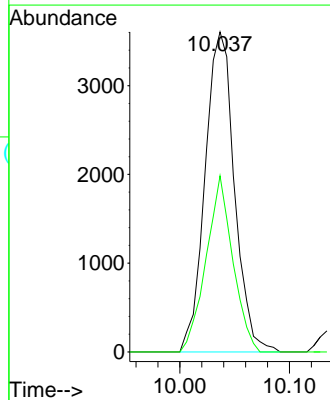
Tgt Ion: 76 Resp: 43152
 Ion Ratio Lower Upper
 76 100
 78 8.6 7.4 11.0

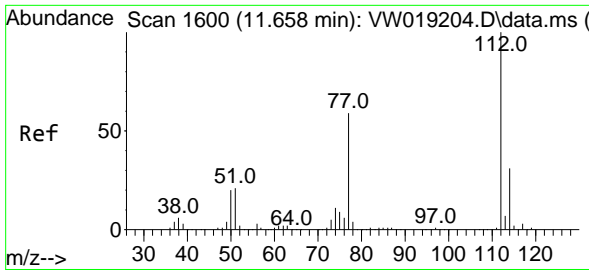


#39
 cis-1,3-Dichloropropene
 Concen: 0.478 ug/L
 RT: 10.037 min Scan# 1334
 Delta R.T. -0.036 min
 Lab File: VW019206.D
 Acq: 14 Jun 2021 11:04



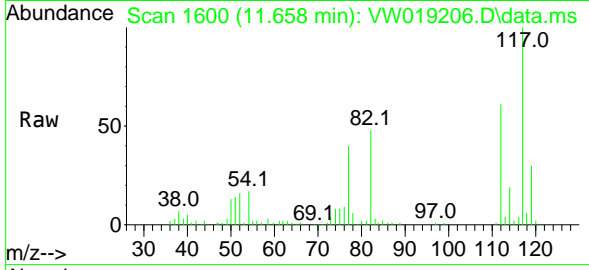
Tgt Ion: 75 Resp: 6722
 Ion Ratio Lower Upper
 75 100
 77 55.1 22.6 42.0#



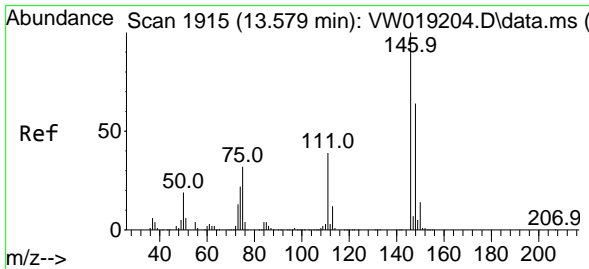
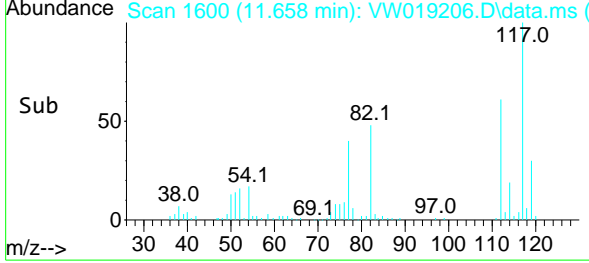
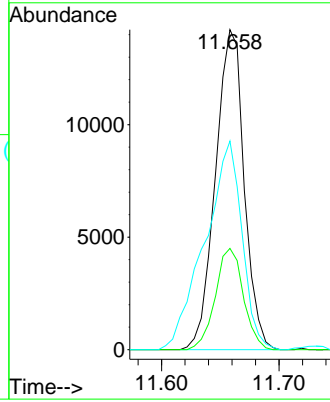


#51
 Chlorobenzene
 Concen: 0.984 ug/L
 RT: 11.658 min Scan# 1600
 Delta R.T. 0.000 min
 Lab File: VW019206.D
 Acq: 14 Jun 2021 11:04

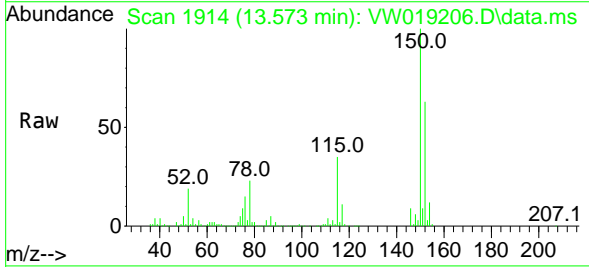
Instrument :
 MSVOA_W
 ClientSampled :
 BGD34



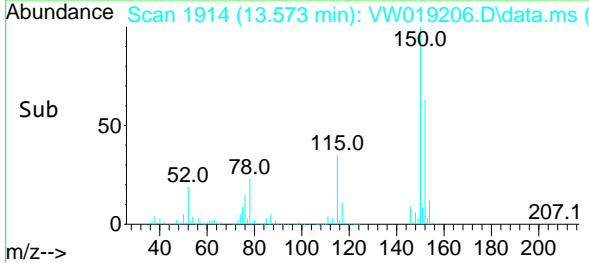
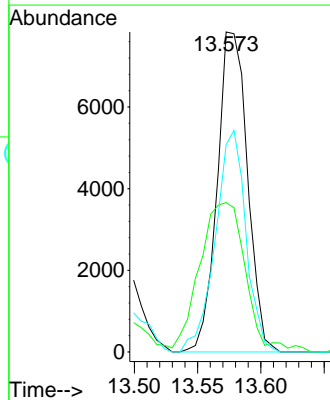
Tgt Ion:112 Resp: 24144
 Ion Ratio Lower Upper
 112 100
 114 31.7 23.4 43.6
 77 65.2 47.6 71.4

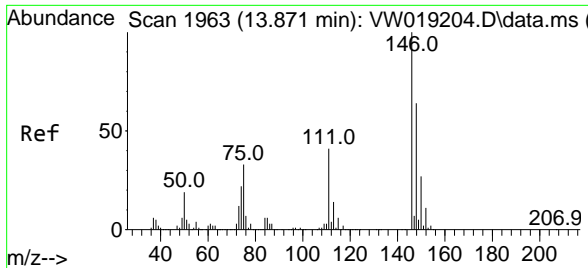


#65
 1,4-Dichlorobenzene
 Concen: 0.794 ug/L
 RT: 13.573 min Scan# 1914
 Delta R.T. -0.006 min
 Lab File: VW019206.D
 Acq: 14 Jun 2021 11:04



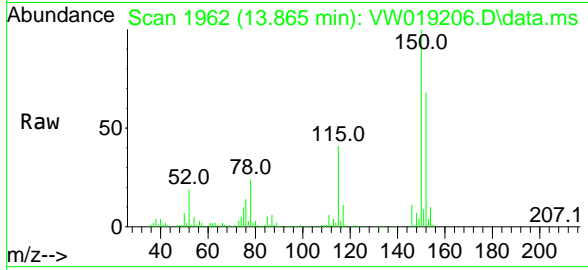
Tgt Ion:146 Resp: 13039
 Ion Ratio Lower Upper
 146 100
 111 46.7 28.8 53.4
 148 64.8 46.8 87.0





#67
 1,2-Dichlorobenzene
 Concen: 1.313 ug/L
 RT: 13.865 min Scan# 1962
 Delta R.T. -0.006 min
 Lab File: VW019206.D
 Acq: 14 Jun 2021 11:04

Instrument :
 MSVOA_W
 ClientSampled :
 BGD34



Tgt Ion	Resp	Lower	Upper
146	18989		
146	100		
111	49.4	33.2	49.8
148	63.2	50.4	75.6

