

Data Path : Z:\voasrv\HPCHEM1\MSVOA_W\Data\VW061621\
 Data File : VW019230.D
 Acq On : 16 Jun 2021 11:18
 Operator : SY/VA
 Sample : M2680-16
 Misc : 5.06G/10ML/MSVOA_W/SOIL
 ALS Vial : 5 Sample Multiplier: 1

Instrument :
 MSVOA_W
 ClientSampled :

Quant Time: Jun 17 01:27:23 2021
 Quant Method : Z:\voasrv\HPCHEM1\MSVOA_W\Method\SFAMWLM060221SMA.M
 Quant Title : SFAM01.0
 QLast Update : Thu Jun 17 01:25:38 2021
 Response via : Initial Calibration

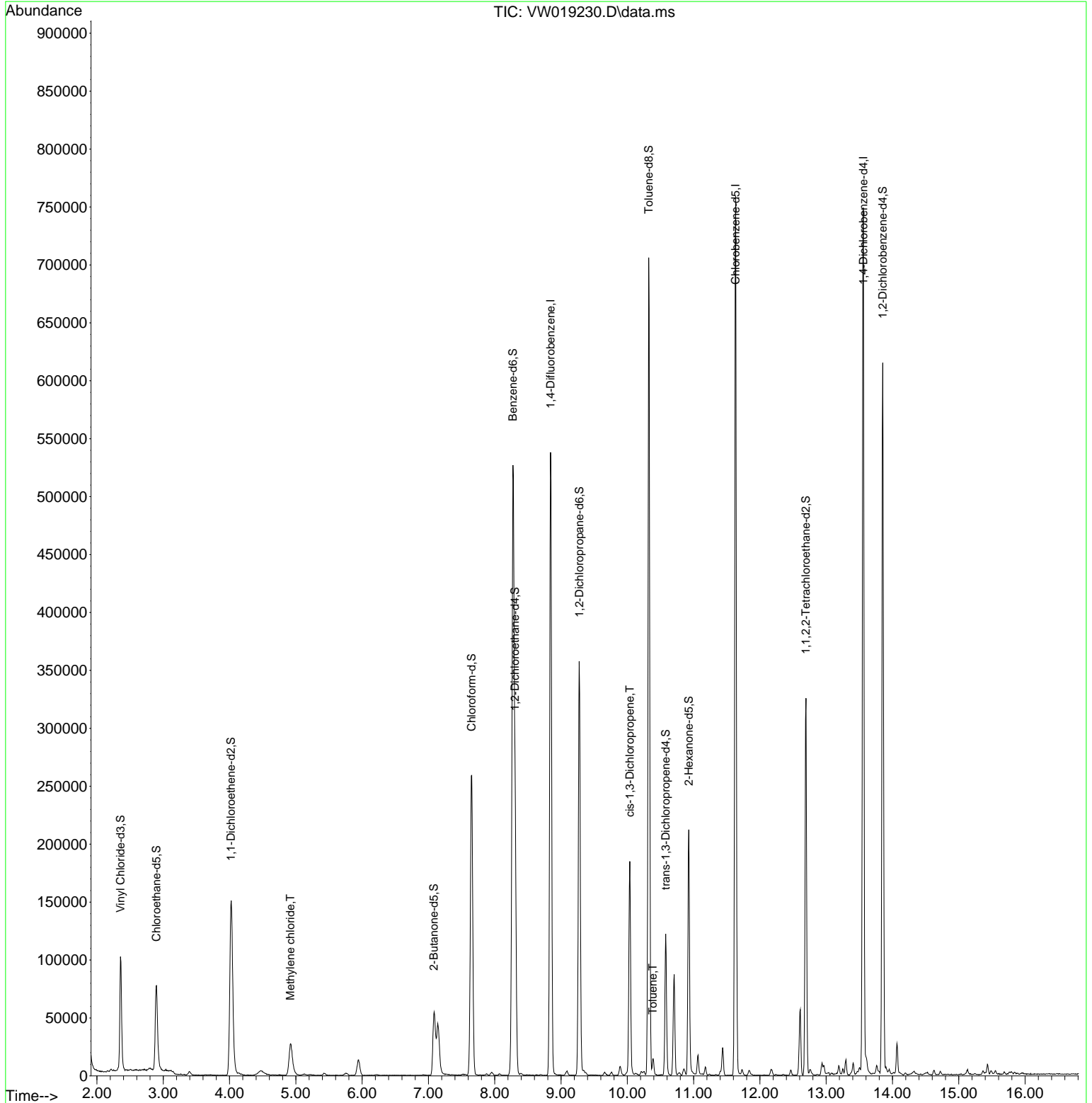
Compound	R.T.	QIon	Response	Conc	Units	Dev(Min)
Internal Standards						
1) 1,4-Difluorobenzene	8.842	114	442057	25.000	ug/L	0.00
28) Chlorobenzene-d5	11.634	117	408500	25.000	ug/L	0.00
58) 1,4-Dichlorobenzene-d4	13.560	152	190165	25.000	ug/L	0.00
System Monitoring Compounds						
4) Vinyl Chloride-d3	2.355	65	108220	18.514	ug/L	0.00
Spiked Amount	25.000	Range 30 - 150	Recovery =	74.040%		
7) Chloroethane-d5	2.898	69	100053	20.097	ug/L	0.00
Spiked Amount	25.000	Range 30 - 150	Recovery =	80.400%		
11) 1,1-Dichloroethene-d2	4.019	63	168397	14.500	ug/L	-0.01
Spiked Amount	25.000	Range 45 - 110	Recovery =	58.000%		
21) 2-Butanone-d5	7.080	46	95105	62.112	ug/L	0.00
Spiked Amount	50.000	Range 20 - 135	Recovery =	124.220%		
24) Chloroform-d	7.653	84	266199	22.398	ug/L	0.00
Spiked Amount	25.000	Range 40 - 150	Recovery =	89.600%		
26) 1,2-Dichloroethane-d4	8.305	65	159006	23.852	ug/L	0.00
Spiked Amount	25.000	Range 70 - 130	Recovery =	95.400%		
32) Benzene-d6	8.275	84	521275	22.397	ug/L	0.00
Spiked Amount	25.000	Range 20 - 135	Recovery =	89.600%		
36) 1,2-Dichloropropane-d6	9.274	67	165895	23.512	ug/L	0.00
Spiked Amount	25.000	Range 70 - 120	Recovery =	94.040%		
41) Toluene-d8	10.323	98	456167	21.342	ug/L	0.00
Spiked Amount	25.000	Range 30 - 130	Recovery =	85.360%		
43) trans-1,3-Dichloroprop...	10.579	79	66222	21.671	ug/L	0.00
Spiked Amount	25.000	Range 30 - 135	Recovery =	86.680%		
47) 2-Hexanone-d5	10.927	63	73428	61.370	ug/L	0.00
Spiked Amount	50.000	Range 20 - 135	Recovery =	122.740%		
56) 1,1,2,2-Tetrachloroeth...	12.695	84	161731	27.788	ug/L	0.00
Spiked Amount	25.000	Range 45 - 120	Recovery =	111.160%		
66) 1,2-Dichlorobenzene-d4	13.853	152	152406	22.962	ug/L	0.00
Spiked Amount	25.000	Range 75 - 120	Recovery =	91.840%		
Target Compounds						
16) Methylene chloride	4.915	84	23188	2.827	ug/L	95
39) cis-1,3-Dichloropropene	10.037	75	4994	0.488	ug/L #	72
42) Toluene	10.384	91	9824	0.340	ug/L	98

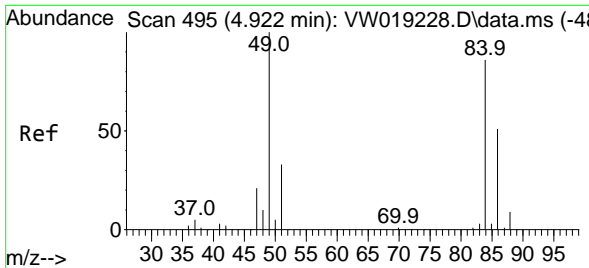
(#) = qualifier out of range (m) = manual integration (+) = signals summed

Data Path : Z:\voasrv\HPCHEM1\MSVOA_W\Data\VW061621\
 Data File : VW019230.D
 Acq On : 16 Jun 2021 11:18
 Operator : SY/VA
 Sample : M2680-16
 Misc : 5.06G/10ML/MSVOA_W/SOIL
 ALS Vial : 5 Sample Multiplier: 1

Instrument :
 MSVOA_W
 ClientSampled :

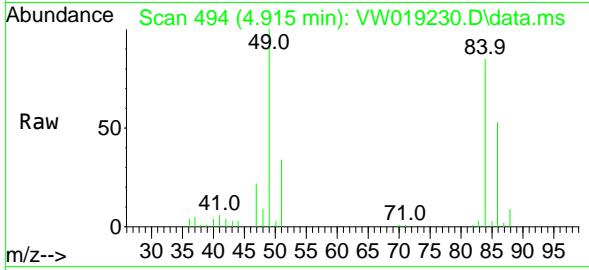
Quant Time: Jun 17 01:27:23 2021
 Quant Method : Z:\voasrv\HPCHEM1\MSVOA_W\Method\SFAMWLM060221SMA.M
 Quant Title : SFAM01.0
 QLast Update : Thu Jun 17 01:25:38 2021
 Response via : Initial Calibration





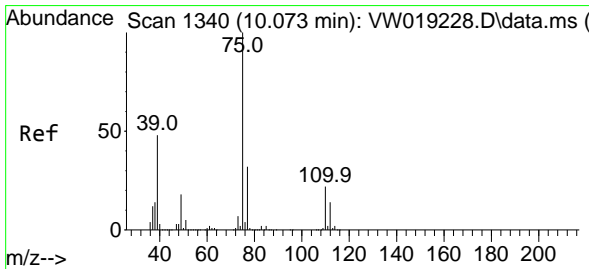
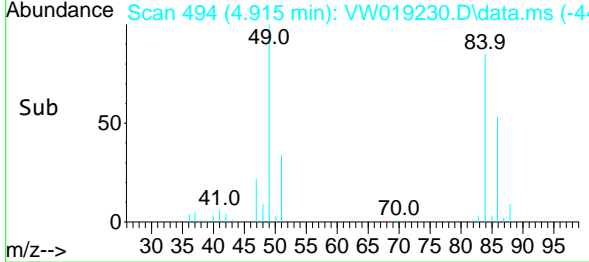
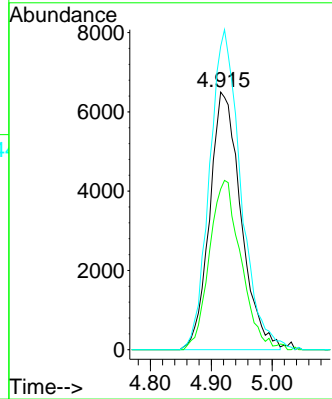
#16
 Methylene chloride
 Concen: 2.827 ug/L
 RT: 4.915 min Scan# 494
 Delta R.T. -0.006 min
 Lab File: VW019230.D
 Acq: 16 Jun 2021 11:18

Instrument :
 MSVOA_W
 ClientSampled :



Tgt Ion: 84 Resp: 23188

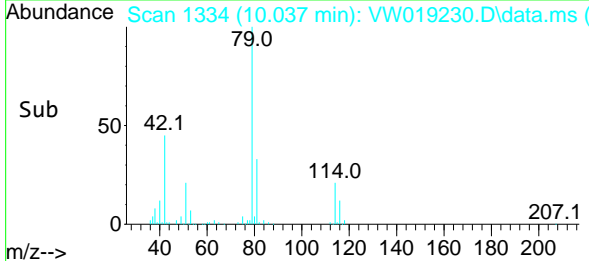
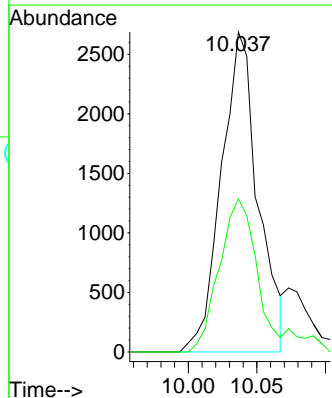
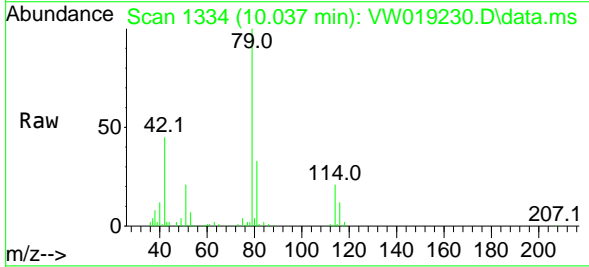
Ion	Ratio	Lower	Upper
84	100		
86	62.4	45.3	84.1
49	117.7	86.6	160.8

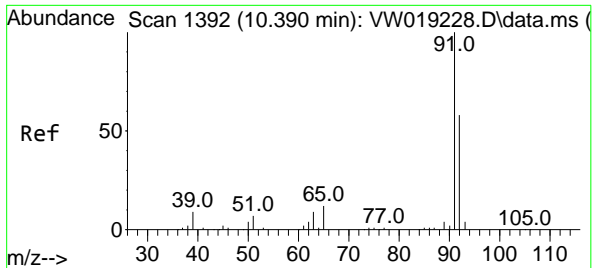


#39
 cis-1,3-Dichloropropene
 Concen: 0.488 ug/L
 RT: 10.037 min Scan# 1334
 Delta R.T. -0.037 min
 Lab File: VW019230.D
 Acq: 16 Jun 2021 11:18

Tgt Ion: 75 Resp: 4994

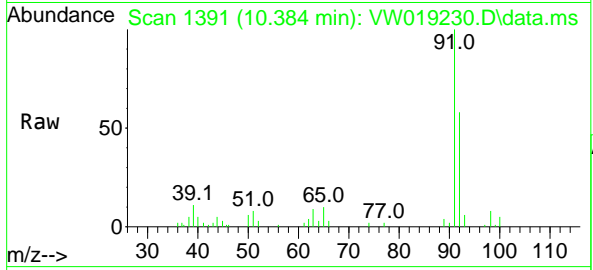
Ion	Ratio	Lower	Upper
75	100		
77	47.8	22.6	42.0#





#42
 Toluene
 Concen: 0.340 ug/L
 RT: 10.384 min Scan# 1391
 Delta R.T. -0.006 min
 Lab File: VW019230.D
 Acq: 16 Jun 2021 11:18

Instrument :
 MSVOA_W
 ClientSampled :



Tgt Ion: 91 Resp: 9824
 Ion Ratio Lower Upper
 91 100
 92 58.0 39.5 73.3

