

Data Path : Z:\VOASRV\HPCHEM1\MSVOA\_W\DATA\VW062018\  
 Data File : VW003353.D  
 Acq On : 20 Jun 2018 15:32  
 Operator : SY/AP  
 Sample : J3568-09  
 Misc : 4.93G/10ML/MSVOA\_W/SOIL  
 ALS Vial : 1 Sample Multiplier: 1

Instrument :  
 MSVOA\_W  
 ClientSampleId :  
 DAXS2

Quant Time: Jun 21 04:21:42 2018  
 Quant Method : Z:\VOASRV\HPCHEM1\MSVOA\_W\METHOD\SOM2WLM062018S.M  
 Quant Title : VOC Analysis  
 QLast Update : Thu Jun 21 04:12:02 2018  
 Response via : Initial Calibration

Internal Standards	R.T.	QIon	Response	Conc	Units	Dev(Min)
1) 1,4-Difluorobenzene	8.85	114	153628	25.00	ug/L	0.00
28) Chlorobenzene-d5	11.63	117	150909	25.00	ug/L	0.00
60) 1,4-Dichlorobenzene-d4	13.57	152	53839	25.00	ug/L	0.00

System Monitoring Compounds

4) Vinyl Chloride-d3	2.35	65	48384	23.22	ug/L	0.00
Spiked Amount	25.000	Range	30 - 150	Recovery	=	92.88%
7) Chloroethane-d5	2.89	69	44488	25.59	ug/L	0.00
Spiked Amount	25.000	Range	30 - 150	Recovery	=	102.36%
10) 1,1-Dichloroethene-d2	4.00	63	72330	17.48	ug/L	0.00
Spiked Amount	25.000	Range	45 - 110	Recovery	=	69.92%
20) 2-Butanone-d5	7.09	46	25107	38.24	ug/L	0.00
Spiked Amount	50.000	Range	20 - 135	Recovery	=	76.48%
24) Chloroform-d	7.65	84	117913	29.18	ug/L	0.00
Spiked Amount	25.000	Range	40 - 150	Recovery	=	116.72%
26) 1,2-Dichloroethane-d4	8.31	65	93066	38.75	ug/L	0.00
Spiked Amount	25.000	Range	70 - 130	Recovery	=	155.00%#
29) Benzene-d6	8.28	84	208917	26.09	ug/L	0.00
Spiked Amount	25.000	Range	20 - 135	Recovery	=	104.36%
33) 1,2-Dichloropropane-d6	9.28	67	78560	30.99	ug/L	0.00
Spiked Amount	25.000	Range	70 - 120	Recovery	=	123.96%#
37) Toluene-d8	10.33	98	177212	23.15	ug/L	0.00
Spiked Amount	25.000	Range	30 - 130	Recovery	=	92.60%
38) trans-1,3-Dichloropropene-	10.58	79	25291	21.25	ug/L	0.00
Spiked Amount	25.000	Range	30 - 135	Recovery	=	85.00%
39) 2-Hexanone-d5	10.93	63	15023	29.00	ug/L	0.00
Spiked Amount	50.000	Range	20 - 135	Recovery	=	58.00%
48) 1,1,2,2-Tetrachloroethane-	12.70	84	77207	32.74	ug/L	0.00
Spiked Amount	25.000	Range	45 - 120	Recovery	=	130.96%#
61) 1,2-Dichlorobenzene-d4	13.87	152	56952	28.01	ug/L	0.00
Spiked Amount	25.000	Range	75 - 120	Recovery	=	112.04%

Target Compounds

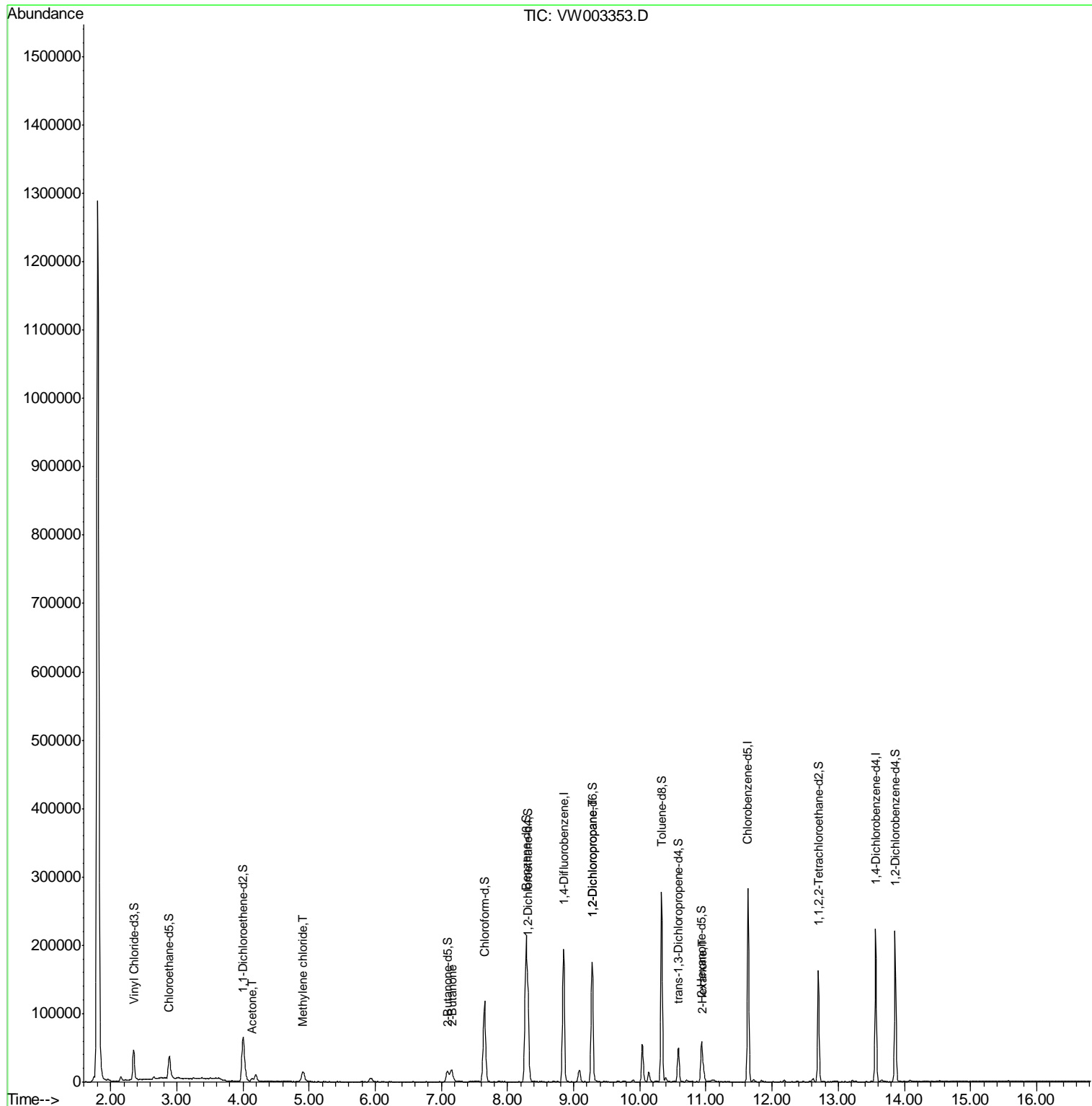
Target Compounds	R.T.	QIon	Response	Conc	Units	Qvalue
13) Acetone	4.14	43	6057	8.655	ug/L	75
16) Methylene chloride	4.91	84	6875	3.248	ug/L	91
21) 2-Butanone	7.16	43	15922	19.361	ug/L #	53
40) 1,2-Dichloropropane	9.27	63	9934	4.387	ug/L #	88
49) 2-Hexanone	10.96	43	13979	11.595	ug/L #	42

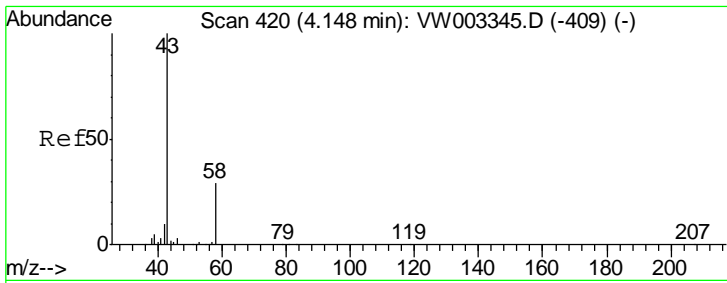
(#) = qualifier out of range (m) = manual integration (+) = signals summed

Data Path : Z:\VOASRV\HPCHEM1\MSVOA\_W\DATA\VW062018\  
 Data File : VW003353.D  
 Acq On : 20 Jun 2018 15:32  
 Operator : SY/AP  
 Sample : J3568-09  
 Misc : 4.93G/10ML/MSVOA\_W/SOIL  
 ALS Vial : 1 Sample Multiplier: 1

Instrument :  
 MSVOA\_W  
 ClientSampleId :  
 DAXS2

Quant Time: Jun 21 04:21:42 2018  
 Quant Method : Z:\VOASRV\HPCHEM1\MSVOA\_W\METHOD\SOM2WLM062018S.M  
 Quant Title : VOC Analysis  
 QLast Update : Thu Jun 21 04:12:02 2018  
 Response via : Initial Calibration

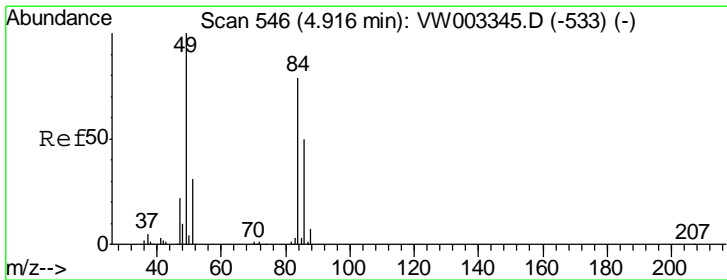
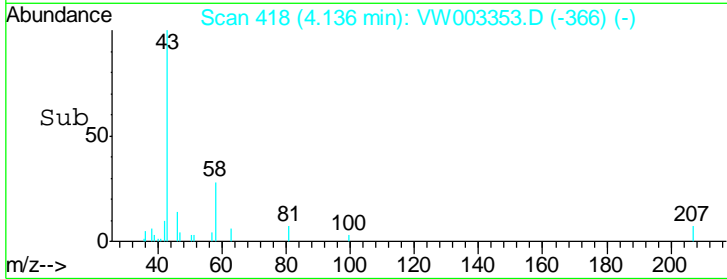
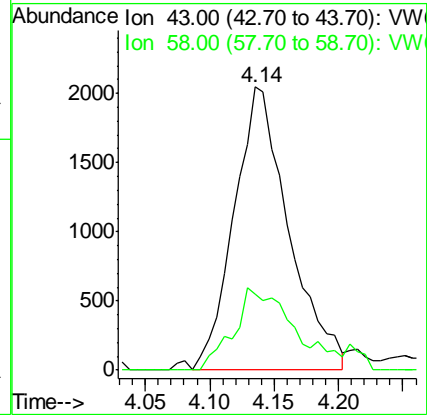
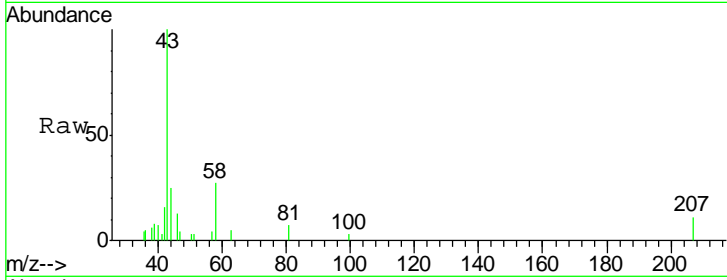




#13  
 Acetone  
 Concen: 8.655 ug/L  
 RT: 4.14 min Scan# 418  
 Delta R.T. -0.01 min  
 Lab File: VW003353.D  
 Acq: 20 Jun 2018 15:32

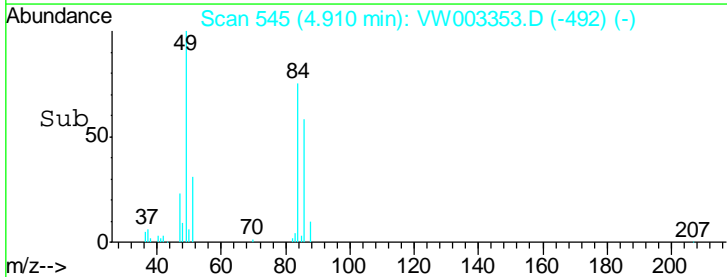
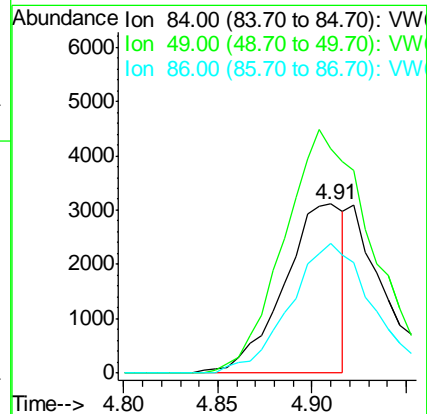
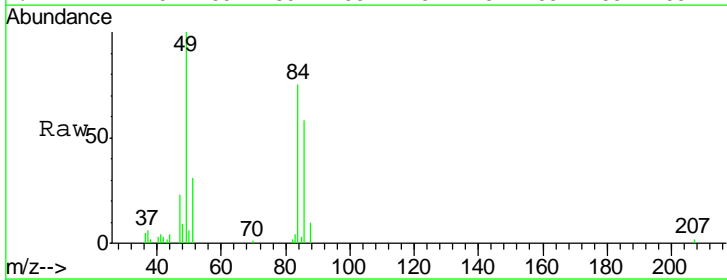
Instrument :  
 MSVOA\_W  
 ClientSampled :  
 DAXS2

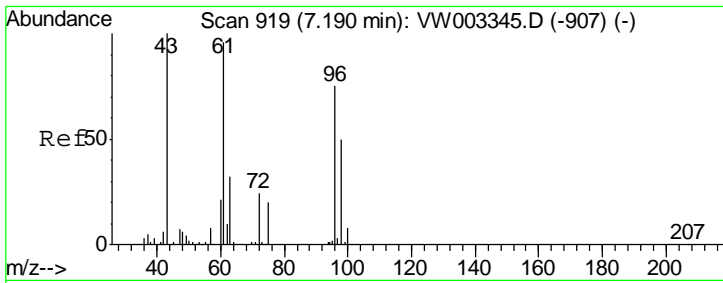
Tgt Ion: 43 Resp: 6057  
 Ion Ratio Lower Upper  
 43 100  
 58 16.1 0.0 58.6



#16  
 Methylene chloride  
 Concen: 3.248 ug/L  
 RT: 4.91 min Scan# 545  
 Delta R.T. -0.01 min  
 Lab File: VW003353.D  
 Acq: 20 Jun 2018 15:32

Tgt Ion: 84 Resp: 6875  
 Ion Ratio Lower Upper  
 84 100  
 49 133.0 88.7 164.7  
 86 76.5 44.2 82.0

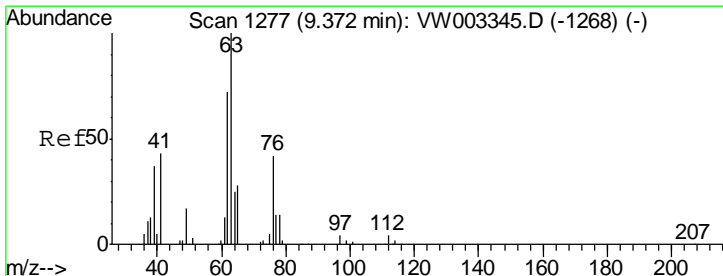
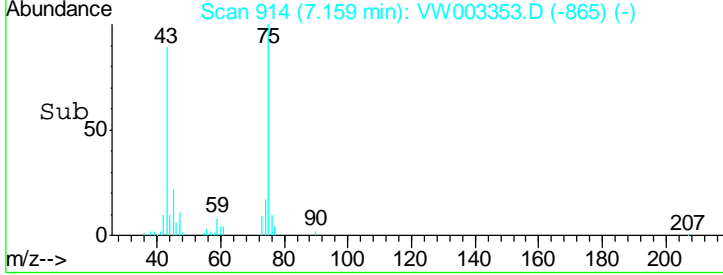
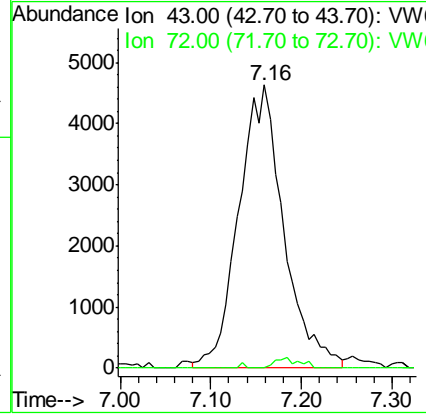
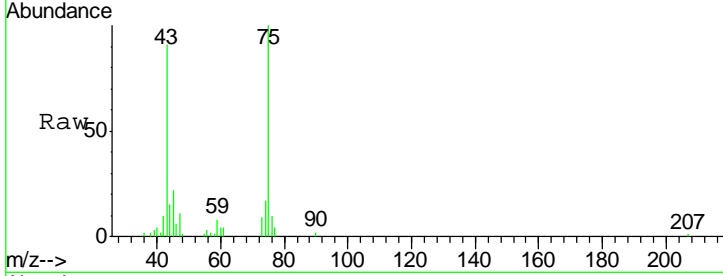




#21  
 2-Butanone  
 Concen: 19.361 ug/L  
 RT: 7.16 min Scan# 914  
 Delta R.T. -0.03 min  
 Lab File: VW003353.D  
 Acq: 20 Jun 2018 15:32

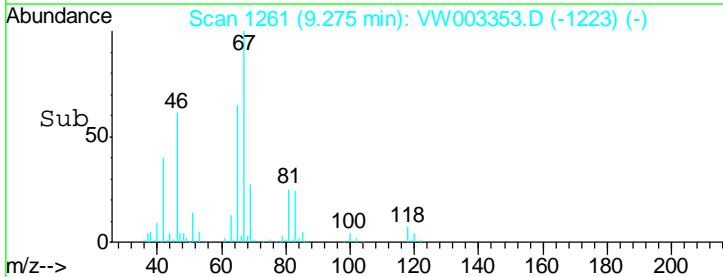
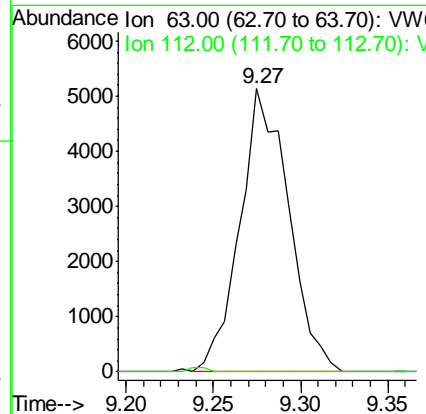
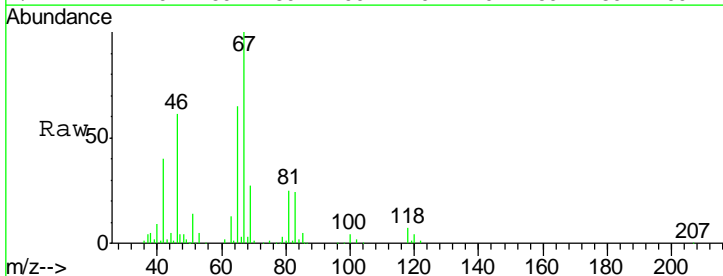
**Instrument :**  
 MSVOA\_W  
**ClientSampled :**  
 DAXS2

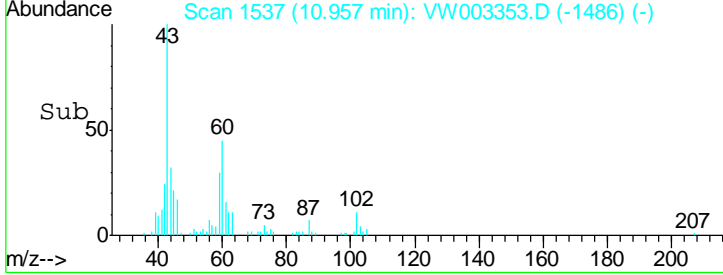
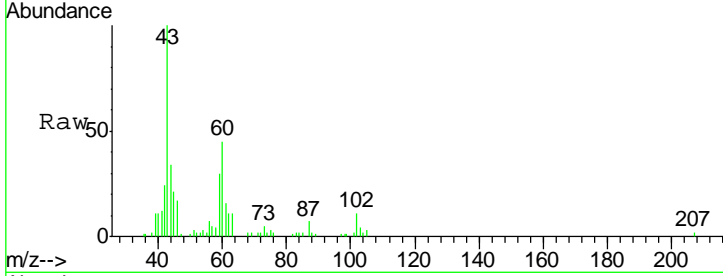
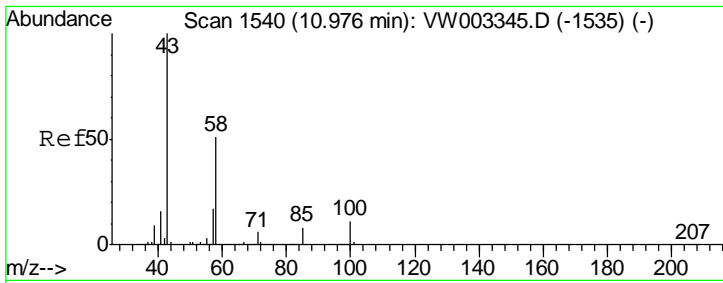
Tgt Ion: 43 Resp: 15922  
 Ion Ratio Lower Upper  
 43 100  
 72 1.2 12.5 37.5#



#40  
 1,2-Dichloropropane  
 Concen: 4.387 ug/L  
 RT: 9.27 min Scan# 1261  
 Delta R.T. -0.10 min  
 Lab File: VW003353.D  
 Acq: 20 Jun 2018 15:32

Tgt Ion: 63 Resp: 9934  
 Ion Ratio Lower Upper  
 63 100  
 112 0.2 3.4 5.0#





#49  
 2-Hexanone  
 Concen: 11.595 ug/L  
 RT: 10.96 min Scan# 1537  
 Delta R.T. -0.02 min  
 Lab File: VW003353.D  
 Acq: 20 Jun 2018 15:32

Instrument : MSVOA\_W  
 ClientSampleId : DAXS2

Tgt Ion: 43 Resp: 13979

Ion	Ratio	Lower	Upper
43	100		
58	0.0	40.4	60.6#
57	2.4	14.6	21.8#
100	0.3	8.6	12.8#

