

Data Path : Z:\VOASRV\HPCHEM1\MSVOA W\DATA\VW062019\
 Data File : VW010884.D
 Acq On : 20 Jun 2019 11:25
 Operator : SY/VA
 Sample : VW0620SBL01
 Misc : 5.00G/5ML/MSVOA W/SOIL
 ALS Vial : 3 Sample Multiplier: 1

Instrument :
 MSVOA_W
 ClientSampleId :
 VW0620SBL01

Integration Parameters: RTEINT.P
 Integrator: RTE
 Smoothing : ON Filtering: 5
 Sampling : 1 Min Area: 3 % of largest Peak
 Start Thrs: 0.2 Max Peaks: 100
 Stop Thrs : 0 Peak Location: TOP

If leading or trailing edge < 100 prefer < Baseline drop else tangent >
 Peak separation: 5

Method : Z:\VOASRV\HPCHEM1\MSVOA_W\METHOD\82W060419S.M
 Title : SW846 8260

Signal : TIC

peak #	R.T. min	first scan	max scan	last scan	PK TY	peak height	corr. area	corr. % max.	% of total
1	4.922	484	495	509	rBV5	6704	28228	2.08%	0.324%
2	7.141	846	859	874	rBV	64226	187861	13.83%	2.157%
3	7.885	971	981	986	rBV	161550	383564	28.24%	4.404%
4	7.946	986	991	1002	rVB	339014	739971	54.48%	8.497%
5	8.256	1031	1042	1045	rBV	97554	229495	16.90%	2.635%
6	8.305	1045	1050	1062	rVB	183934	415776	30.61%	4.774%
7	8.842	1129	1138	1151	rBV	507719	999580	73.59%	11.478%
8	9.890	1300	1310	1317	rBV4	7799	17587	1.29%	0.202%
9	10.323	1373	1381	1391	rBV	783933	1358267	100.00%	15.597%
10	10.707	1435	1444	1451	rBV	78145	137716	10.14%	1.581%
11	11.067	1496	1503	1512	rBV2	32588	58192	4.28%	0.668%
12	11.439	1555	1564	1571	rVB2	19808	35869	2.64%	0.412%
13	11.634	1586	1596	1610	rBV	645085	1106239	81.44%	12.703%
14	12.621	1750	1758	1766	rBV	502078	833786	61.39%	9.574%
15	13.560	1906	1912	1926	rVB	574150	923809	68.01%	10.608%
16	14.079	1989	1997	2003	rBV2	299289	486961	35.85%	5.592%
17	15.505	2224	2231	2239	rBV	453706	765608	56.37%	8.791%

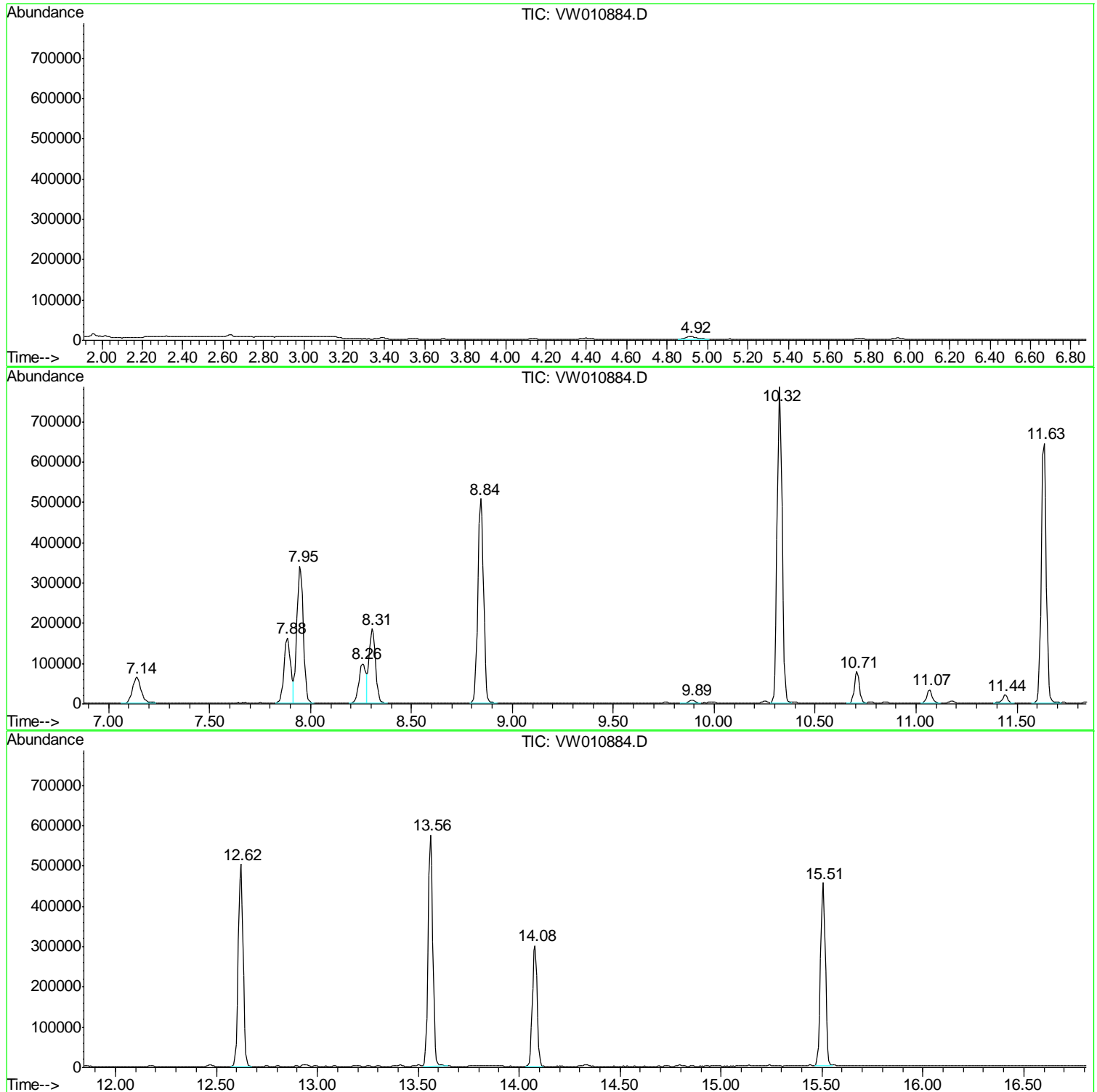
Sum of corrected areas: 8708509

Data Path : Z:\VOASRV\HPCHEM1\MSVOA W\DATA\VW062019\
Data File : VW010884.D
Acq On : 20 Jun 2019 11:25
Operator : SY/VA
Sample : VW0620SBL01
Misc : 5.00G/5ML/MSVOA W/SOIL
ALS Vial : 3 Sample Multiplier: 1

Instrument :
MSVOA_W
ClientSampled :
VW0620SBL01

Quant Method : Z:\VOASRV\HPCHEM1\MSVOA_W\METHOD\82W060419S.M
Quant Title : SW846 8260

TIC Library : C:\DATABASE\NIST11.L
TIC Integration Parameters: LSCINT.P



Data Path : Z:\VOASRV\HPCHEM1\MSVOA W\DATA\VW062019\
 Data File : VW010884.D
 Acq On : 20 Jun 2019 11:25
 Operator : SY/VA
 Sample : VW0620SBL01
 Misc : 5.00G/5ML/MSVOA W/SOIL
 ALS Vial : 3 Sample Multiplier: 1

Instrument :
 MSVOA_W
 ClientSampled :
 VW0620SBL01

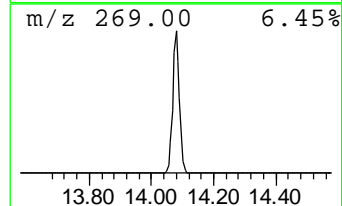
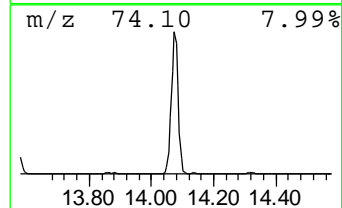
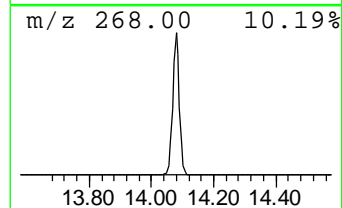
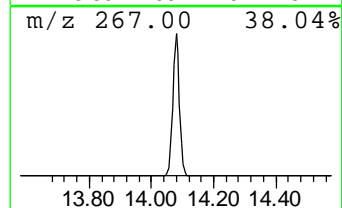
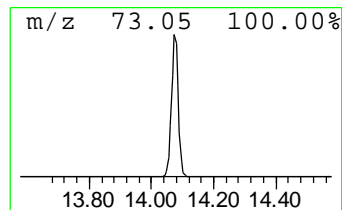
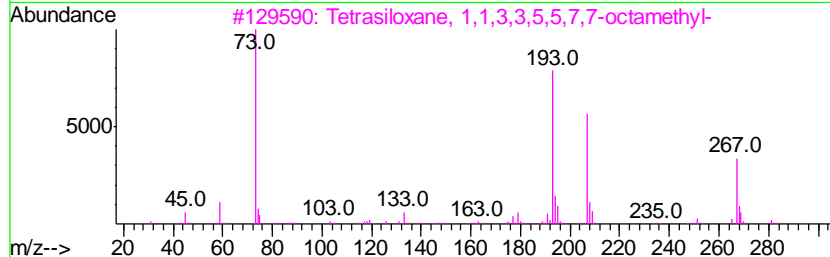
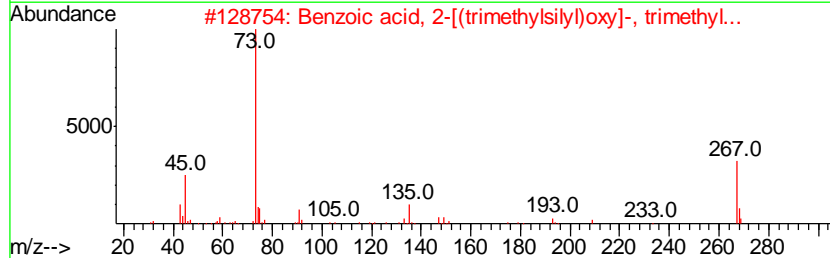
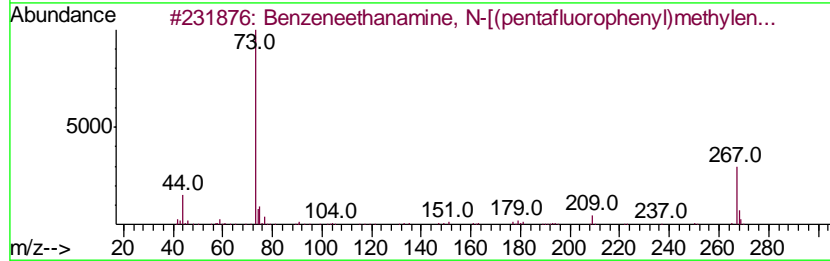
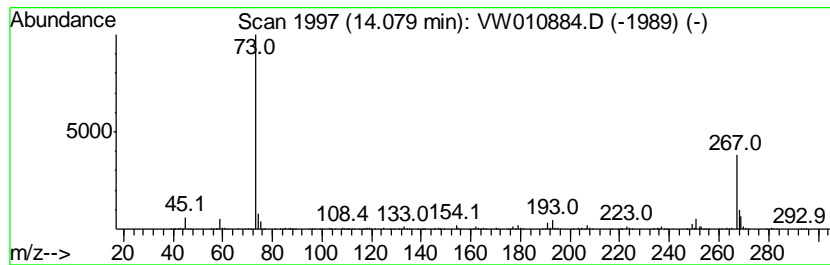
Quant Method : Z:\VOASRV\HPCHEM1\MSVOA_W\METHOD\82W060419S.M
 Quant Title : SW846 8260

TIC Library : C:\DATABASE\NIST11.L
 TIC Integration Parameters: LSCINT.P

 Peak Number 3 unknown14.08 Concentration Rank 2

R.T.	EstConc	Area	Relative to ISTD	R.T.
14.08	26.36 ug/l	486961	1,4-Dichlorobenzene-d4	13.56

Hit#	of	Tentative ID	MW	MolForm	CAS#	Qual
1	5	Benzeneethanamine, N-[(pentafluoro...	475	C21H26F5NO2Si2	055429-85-1	42
2		Benzoic acid, 2-[(trimethylsilyl)...	282	C13H22O3Si2	003789-85-3	38
3		Tetrasiloxane, 1,1,3,3,5,5,7,7-o...	282	C8H26O3Si4	001000-05-1	38
4		4-Methylcatechol, bis(trimethyls...	268	C13H24O2Si2	1000332-79-9	25
5		1-(3-Chlorophenyl)piperazine, 4-...	268	C13H21ClN2Si	1000373-99-3	22



Data Path : Z:\VOASRV\HPCHEM1\MSVOA W\DATA\VW062019\
 Data File : VW010884.D
 Acq On : 20 Jun 2019 11:25
 Operator : SY/VA
 Sample : VW0620SBL01
 Misc : 5.00G/5ML/MSVOA W/SOIL
 ALS Vial : 3 Sample Multiplier: 1

Instrument :
 MSVOA_W
 ClientSampleID :
 VW0620SBL01

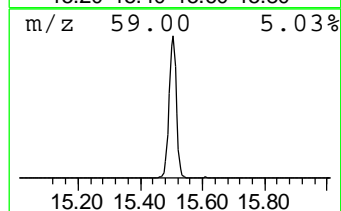
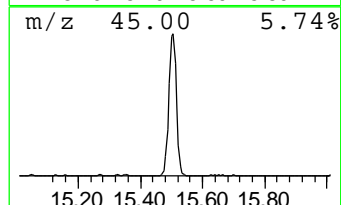
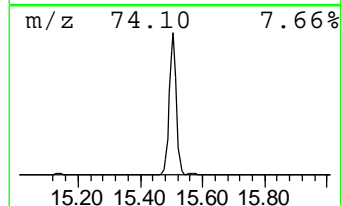
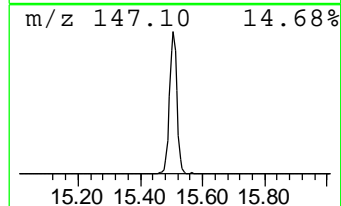
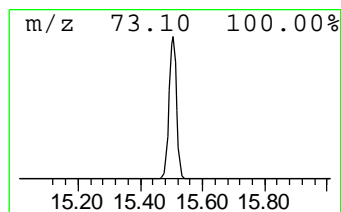
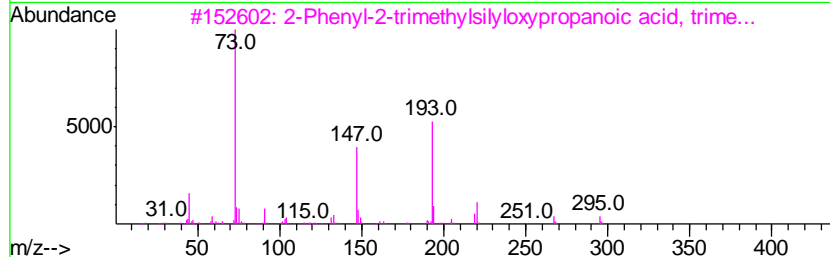
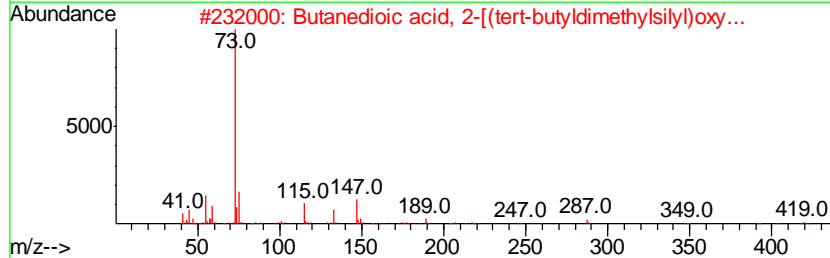
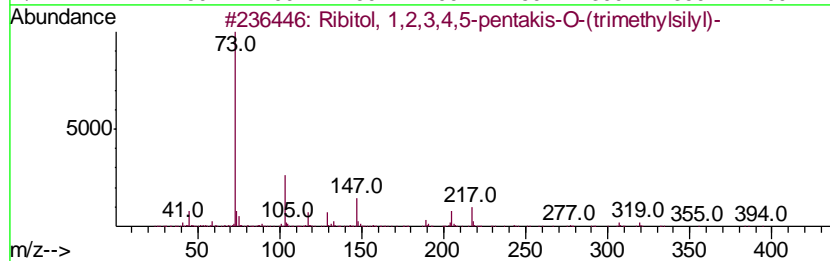
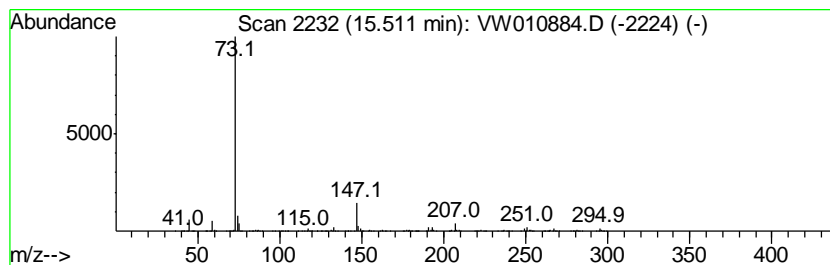
Quant Method : Z:\VOASRV\HPCHEM1\MSVOA_W\METHOD\82W060419S.M
 Quant Title : SW846 8260

TIC Library : C:\DATABASE\NIST11.L
 TIC Integration Parameters: LSCINT.P

 Peak Number 4 unknown15.51 Concentration Rank 1

R.T.	EstConc	Area	Relative to ISTD	R.T.
15.51	41.44 ug/l	765608	1,4-Dichlorobenzene-d4	13.56

Hit#	of	Tentative ID	MW	MolForm	CAS#	Qual
1	5	Ribitol, 1,2,3,4,5-pentakis-O-(t...	512	C20H52O5Si5	032381-53-6	33
2		Butanedioic acid, 2-[(tert-butyl...	476	C22H48O5Si3	099461-86-6	28
3		2-Phenyl-2-trimethylsilyloxyprop...	310	C15H26O3Si2	082326-12-3	27
4		3-Oxa-6-thia-2,7-disilaoctane, 2...	222	C8H22O5Si2	078921-31-0	25
5		Ethanesulfonic acid, 2-[(trimeth...	270	C8H22O4SSi2	067557-58-8	25



Data Path : Z:\VOASRV\HPCHEM1\MSVOA_W\DATA\VW062019\
Data File : VW010884.D
Acq On : 20 Jun 2019 11:25
Operator : SY/VA
Sample : VW0620SBL01
Misc : 5.00G/5ML/MSVOA_W/SOIL
ALS Vial : 3 Sample Multiplier: 1

Instrument :
MSVOA_W
ClientSampleId :
VW0620SBL01

Quant Method : Z:\VOASRV\HPCHEM1\MSVOA_W\METHOD\82W060419S.M
Quant Title : SW846 8260

TIC Library : C:\DATABASE\NIST11.L
TIC Integration Parameters: LSCINT.P

TIC Top Hit name	RT	EstConc	Units	Response	--Internal Standard--			
					#	RT	Resp	Conc
unknown14.08	14.08	26.4	ug/l	486961	4	13.56	923809	50.0
unknown15.51	15.51	41.4	ug/l	765608	4	13.56	923809	50.0