

Data Path : Z:\voasrv\HPCHEM1\MSVOA_W\Data\VW062023\
 Data File : VW026273.D
 Acq On : 20 Jun 2023 16:32
 Operator : SY/MD
 Sample : 03334-15
 Misc : 5.59g/10mL/MSVOA_W/SOIL
 ALS Vial : 1 Sample Multiplier: 1

Instrument :
 MSVOA_W
 ClientSampleId :
 YBW19

Quant Time: Jun 21 01:14:42 2023
 Quant Method : Z:\voasrv\HPCHEM1\MSVOA_W\Method\SFAMWLM053023SMA.M
 Quant Title : SFAM01.0
 QLast Update : Wed Jun 21 01:09:17 2023
 Response via : Initial Calibration

Compound	R.T.	QIon	Response	Conc	Units	Dev(Min)

Internal Standards						
1) 1,4-Difluorobenzene	8.843	114	639965	25.000	ug/L	0.00
28) Chlorobenzene-d5	11.629	117	558185	25.000	ug/L	0.00
58) 1,4-Dichlorobenzene-d4	13.556	152	223751	25.000	ug/L	0.00
System Monitoring Compounds						
4) Vinyl Chloride-d3	2.369	65	134434	14.932	ug/L	0.00
Spiked Amount	25.000	Range 30 - 150	Recovery =	59.720%		
7) Chloroethane-d5	2.893	69	132604	19.676	ug/L	0.00
Spiked Amount	25.000	Range 30 - 150	Recovery =	78.720%		
11) 1,1-Dichloroethene-d2	4.027	65	73515	16.560	ug/L	0.01
Spiked Amount	25.000	Range 45 - 110	Recovery =	66.240%		
21) 2-Butanone-d5	7.075	46	204066	77.856	ug/L	0.00
Spiked Amount	50.000	Range 20 - 135	Recovery =	155.720%#		
24) Chloroform-d	7.648	84	370624	19.777	ug/L	0.00
Spiked Amount	25.000	Range 40 - 150	Recovery =	79.120%		
26) 1,2-Dichloroethane-d4	8.307	65	235745	23.005	ug/L	0.00
Spiked Amount	25.000	Range 70 - 130	Recovery =	92.000%		
32) Benzene-d6	8.276	84	709576	18.892	ug/L	0.00
Spiked Amount	25.000	Range 20 - 135	Recovery =	75.560%		
36) 1,2-Dichloropropane-d6	9.270	67	246994	20.757	ug/L	0.00
Spiked Amount	25.000	Range 70 - 120	Recovery =	83.040%		
41) Toluene-d8	10.325	98	575317	17.272	ug/L	0.00
Spiked Amount	25.000	Range 30 - 130	Recovery =	69.080%		
43) trans-1,3-Dichloroprop...	10.575	79	86386	18.320	ug/L	0.00
Spiked Amount	25.000	Range 30 - 135	Recovery =	73.280%		
47) 2-Hexanone-d5	10.922	63	126273	67.301	ug/L	0.00
Spiked Amount	50.000	Range 20 - 135	Recovery =	134.600%		
56) 1,1,2,2-Tetrachloroeth...	12.690	84	247382	28.569	ug/L	0.00
Spiked Amount	25.000	Range 45 - 120	Recovery =	114.280%		
66) 1,2-Dichlorobenzene-d4	13.848	152	176226	20.577	ug/L	0.00
Spiked Amount	25.000	Range 75 - 120	Recovery =	82.320%		

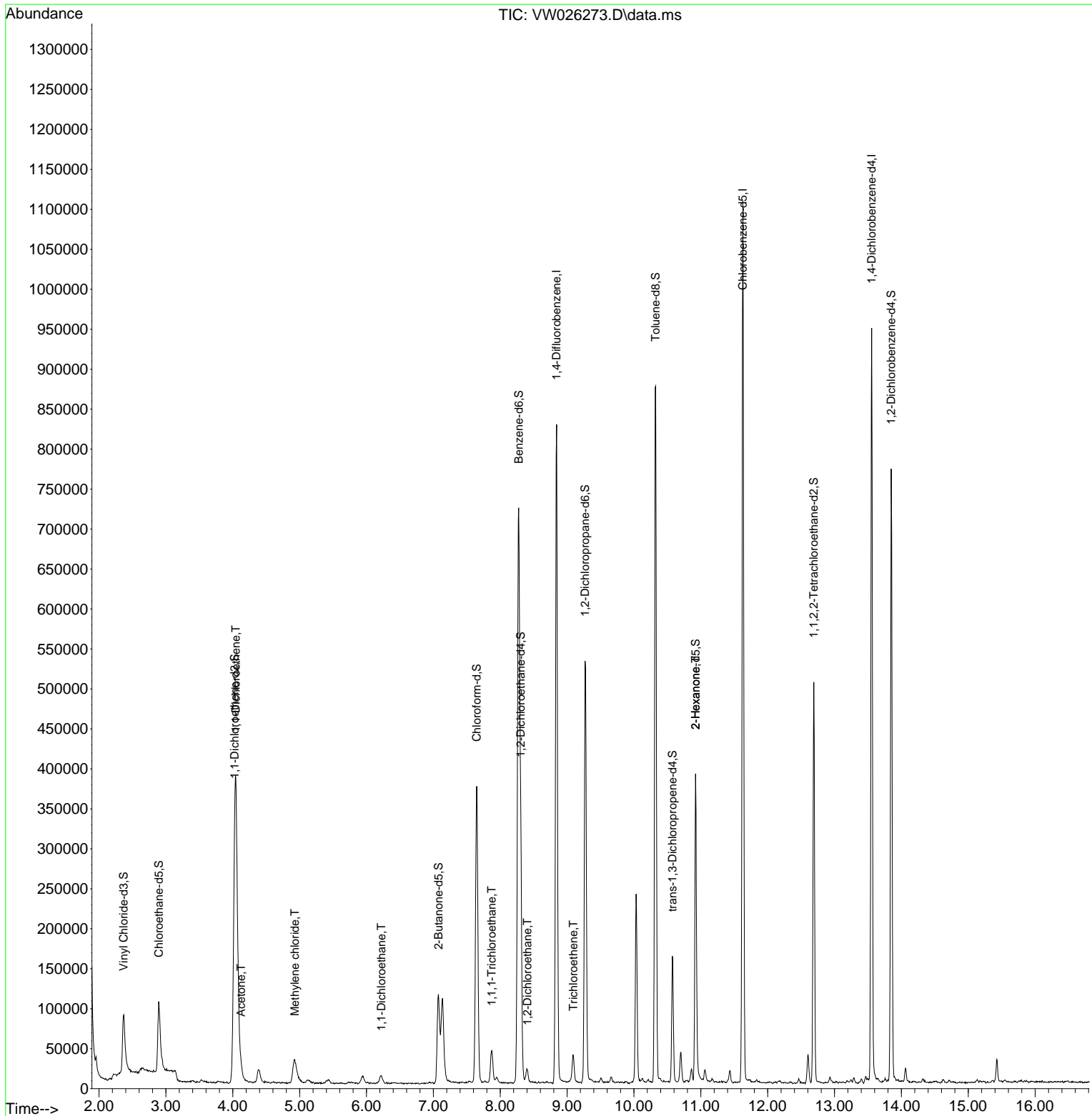
Target Compounds						Qvalue
12) 1,1-Dichloroethene	4.045	96	184463	22.639	ug/L	85
13) Acetone	4.124	43	7459	3.678	ug/L	92
16) Methylene chloride	4.929	84	29502	2.888	ug/L	100
19) 1,1-Dichloroethane	6.222	63	14447	0.776	ug/L	96
27) 1,2-Dichloroethane	8.404	62	15620	1.306	ug/L	100
30) 1,1,1-Trichloroethane	7.874	97	30249	2.233	ug/L	97
34) Trichloroethene	9.093	95	11328	1.157	ug/L	91
48) 2-Hexanone	10.922	43	16877	3.920	ug/L #	70

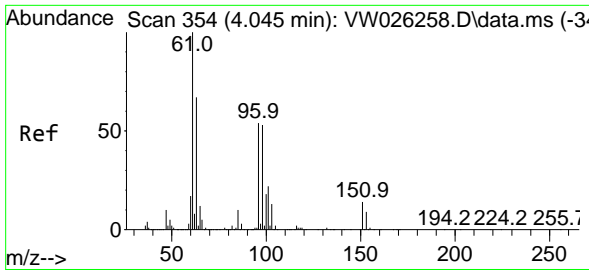
(#) = qualifier out of range (m) = manual integration (+) = signals summed

Data Path : Z:\voasrv\HPCHEM1\MSVOA_W\Data\VW062023\
 Data File : VW026273.D
 Acq On : 20 Jun 2023 16:32
 Operator : SY/MD
 Sample : 03334-15
 Misc : 5.59g/10mL/MSVOA_W/SOIL
 ALS Vial : 1 Sample Multiplier: 1

Instrument :
 MSVOA_W
 ClientSampleId :
 YBW19

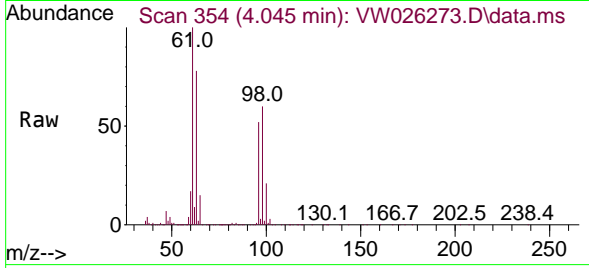
Quant Time: Jun 21 01:14:42 2023
 Quant Method : Z:\voasrv\HPCHEM1\MSVOA_W\Method\SFAMWLM053023SMA.M
 Quant Title : SFAM01.0
 QLast Update : Wed Jun 21 01:09:17 2023
 Response via : Initial Calibration



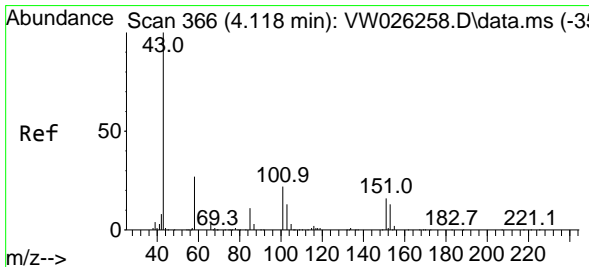
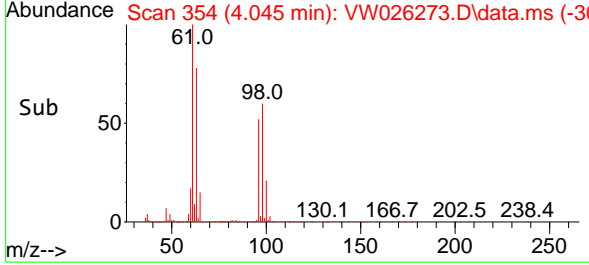
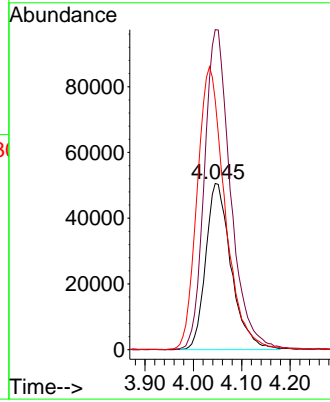


#12
 1,1-Dichloroethene
 Concen: 22.639 ug/L
 RT: 4.045 min Scan# 354
 Delta R.T. 0.000 min
 Lab File: VW026273.D
 Acq: 20 Jun 2023 16:32

Instrument : MSVOA_W
 Client Sample Id : YBW19

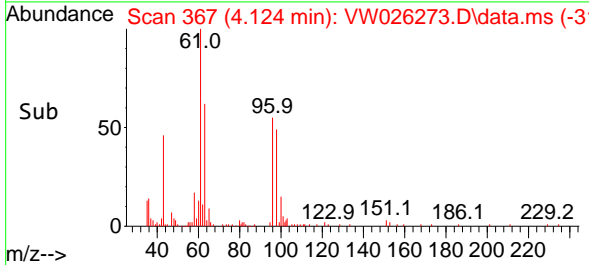
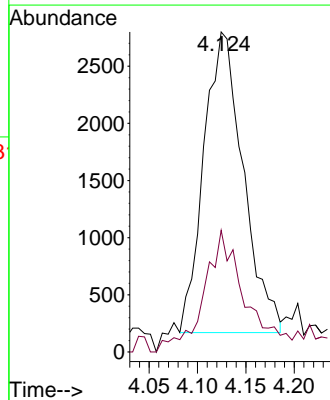
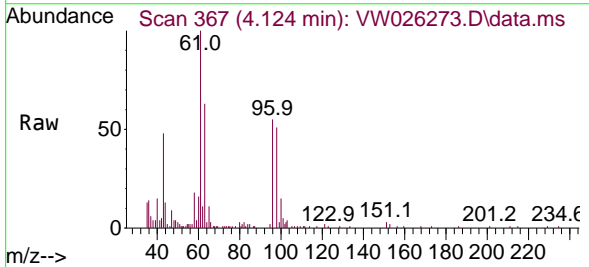


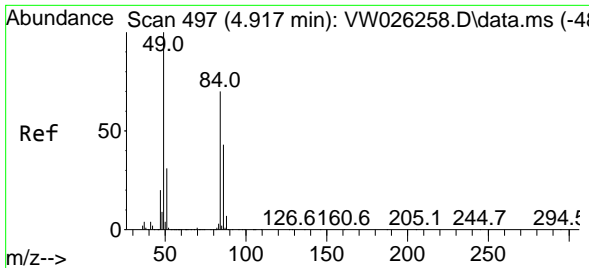
Tgt Ion: 96 Resp: 184463
 Ion Ratio Lower Upper
 96 100
 61 192.5 140.6 261.0
 63 150.0 131.7 244.5



#13
 Acetone
 Concen: 3.678 ug/L
 RT: 4.124 min Scan# 367
 Delta R.T. 0.006 min
 Lab File: VW026273.D
 Acq: 20 Jun 2023 16:32

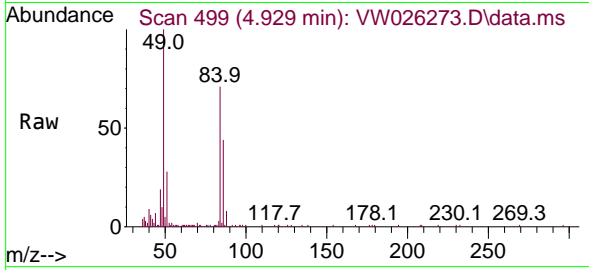
Tgt Ion: 43 Resp: 7459
 Ion Ratio Lower Upper
 43 100
 58 33.5 0.0 58.2





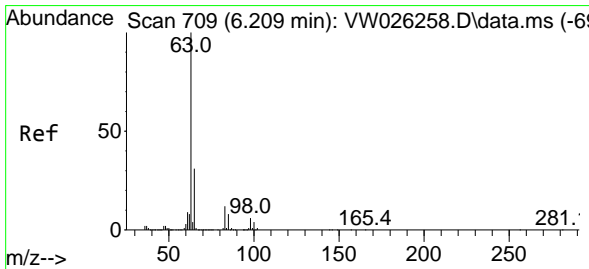
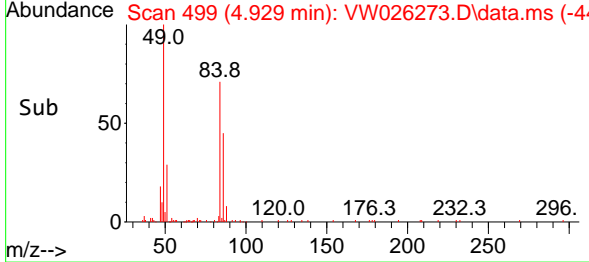
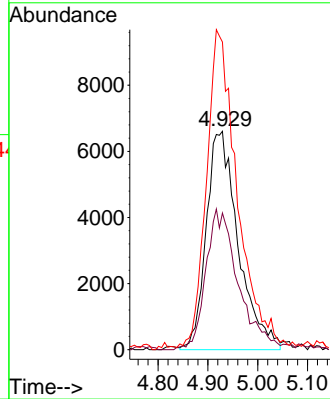
#16
 Methylene chloride
 Concen: 2.888 ug/L
 RT: 4.929 min Scan# 499
 Delta R.T. 0.012 min
 Lab File: VW026273.D
 Acq: 20 Jun 2023 16:32

Instrument : MSVOA_W
 ClientSampleId : YBW19



Tgt Ion: 84 Resp: 29502

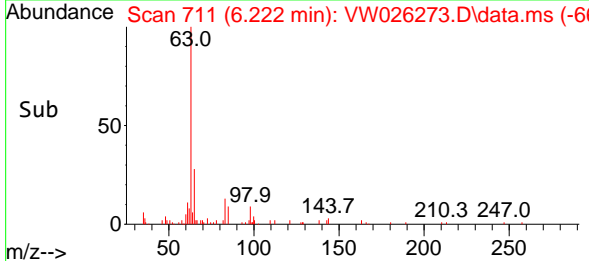
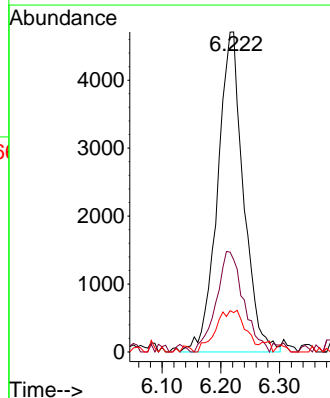
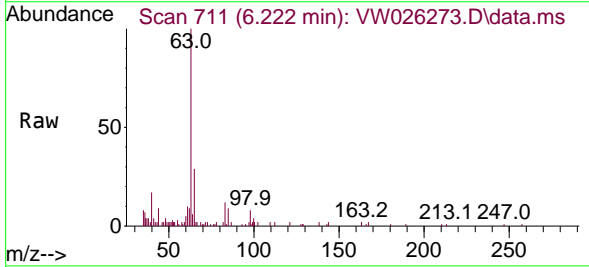
Ion	Ratio	Lower	Upper
84	100		
86	62.6	44.2	82.0
49	140.9	98.8	183.6

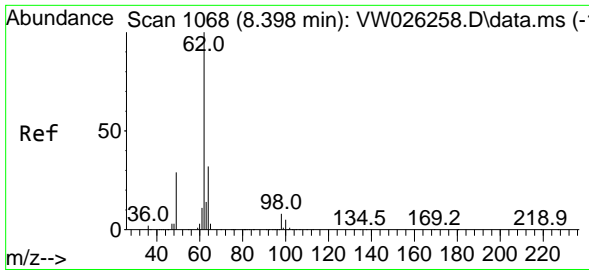


#19
 1,1-Dichloroethane
 Concen: 0.776 ug/L
 RT: 6.222 min Scan# 711
 Delta R.T. 0.012 min
 Lab File: VW026273.D
 Acq: 20 Jun 2023 16:32

Tgt Ion: 63 Resp: 14447

Ion	Ratio	Lower	Upper
63	100		
65	28.8	22.3	41.5
83	12.3	9.1	16.9

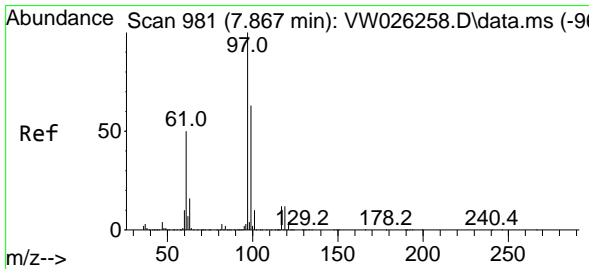
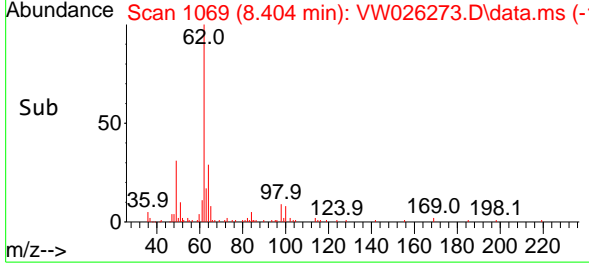
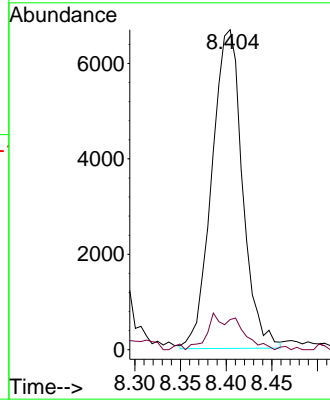
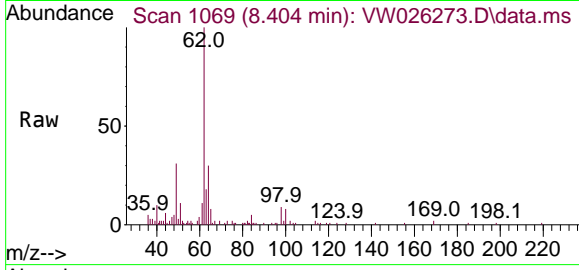




#27
 1,2-Dichloroethane
 Concen: 1.306 ug/L
 RT: 8.404 min Scan# 1069
 Delta R.T. 0.006 min
 Lab File: VW026273.D
 Acq: 20 Jun 2023 16:32

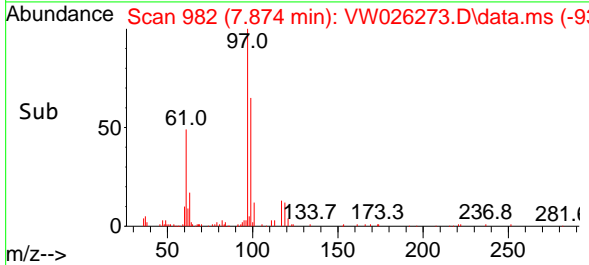
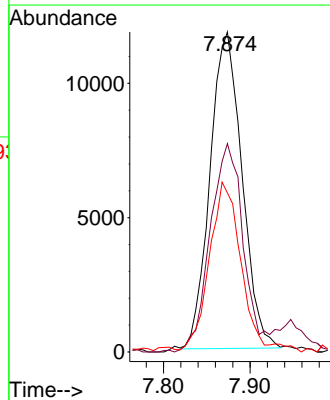
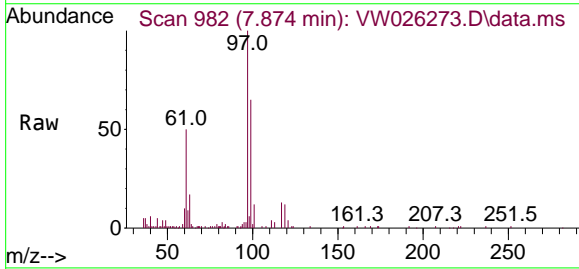
Instrument : MSVOA_W
 ClientSampleId : YBW19

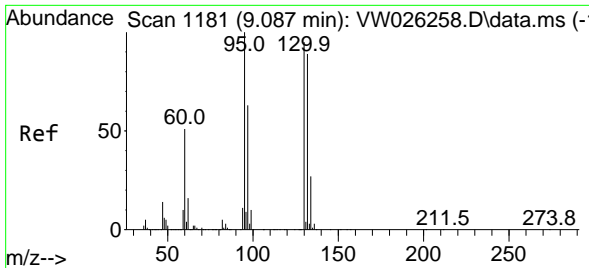
Tgt Ion: 62 Resp: 15620
 Ion Ratio Lower Upper
 62 100
 98 9.4 7.4 11.2



#30
 1,1,1-Trichloroethane
 Concen: 2.233 ug/L
 RT: 7.874 min Scan# 982
 Delta R.T. 0.006 min
 Lab File: VW026273.D
 Acq: 20 Jun 2023 16:32

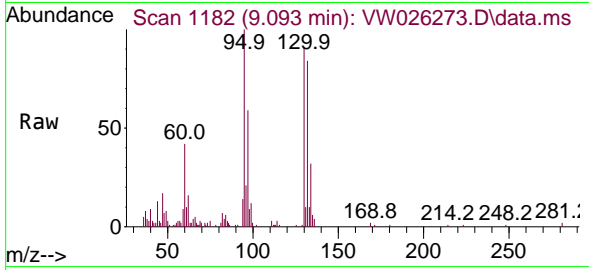
Tgt Ion: 97 Resp: 30249
 Ion Ratio Lower Upper
 97 100
 99 66.6 50.6 76.0
 61 51.4 40.5 60.7





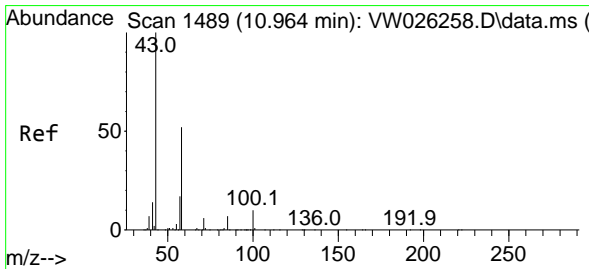
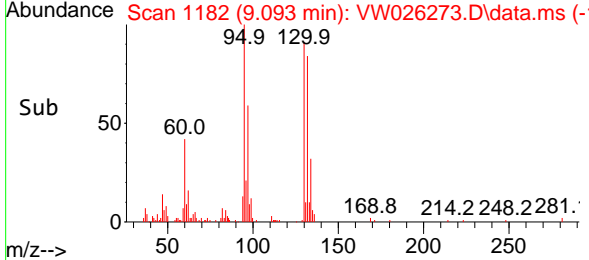
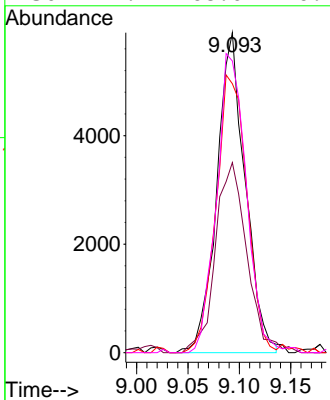
#34
 Trichloroethene
 Concen: 1.157 ug/L
 RT: 9.093 min Scan# 1182
 Delta R.T. 0.006 min
 Lab File: VW026273.D
 Acq: 20 Jun 2023 16:32

Instrument : MSVOA_W
 ClientSampleId : YBW19

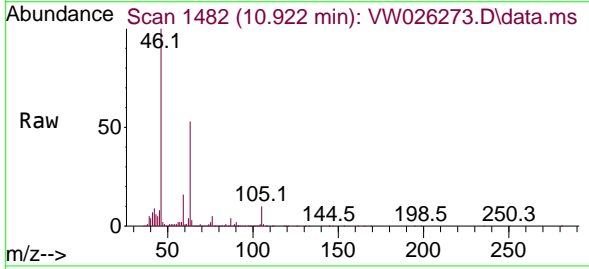


Tgt Ion: 95 Resp: 11328

Ion	Ratio	Lower	Upper
95	100		
97	59.4	45.9	85.3
132	84.0	67.1	124.7
130	91.1	68.0	126.2



#48
 2-Hexanone
 Concen: 3.920 ug/L
 RT: 10.922 min Scan# 1482
 Delta R.T. -0.042 min
 Lab File: VW026273.D
 Acq: 20 Jun 2023 16:32



Tgt Ion: 43 Resp: 16877

Ion	Ratio	Lower	Upper
43	100		
58	31.6	42.2	63.2#
57	33.0	14.2	21.2#
100	2.7	8.3	12.5#

