

Data Path : Z:\voasrv\HPCHEM1\MSVOA_W\Data\VW062124\
 Data File : VW029305.D
 Acq On : 21 Jun 2024 16:22
 Operator : SY/MD
 Sample : P2982-06
 Misc : 4.88g/10mL/MSVOA_W/SOIL/A
 ALS Vial : 16 Sample Multiplier: 1

Instrument :
 MSVOA_W
 ClientSampleId :
 A4CF0

Quant Time: Jun 21 22:57:24 2024
 Quant Method : Z:\voasrv\HPCHEM1\MSVOA_W\Method\SFAMWLM061824SMA.M
 Quant Title : SFAM01.0
 QLast Update : Fri Jun 21 22:53:01 2024
 Response via : Initial Calibration

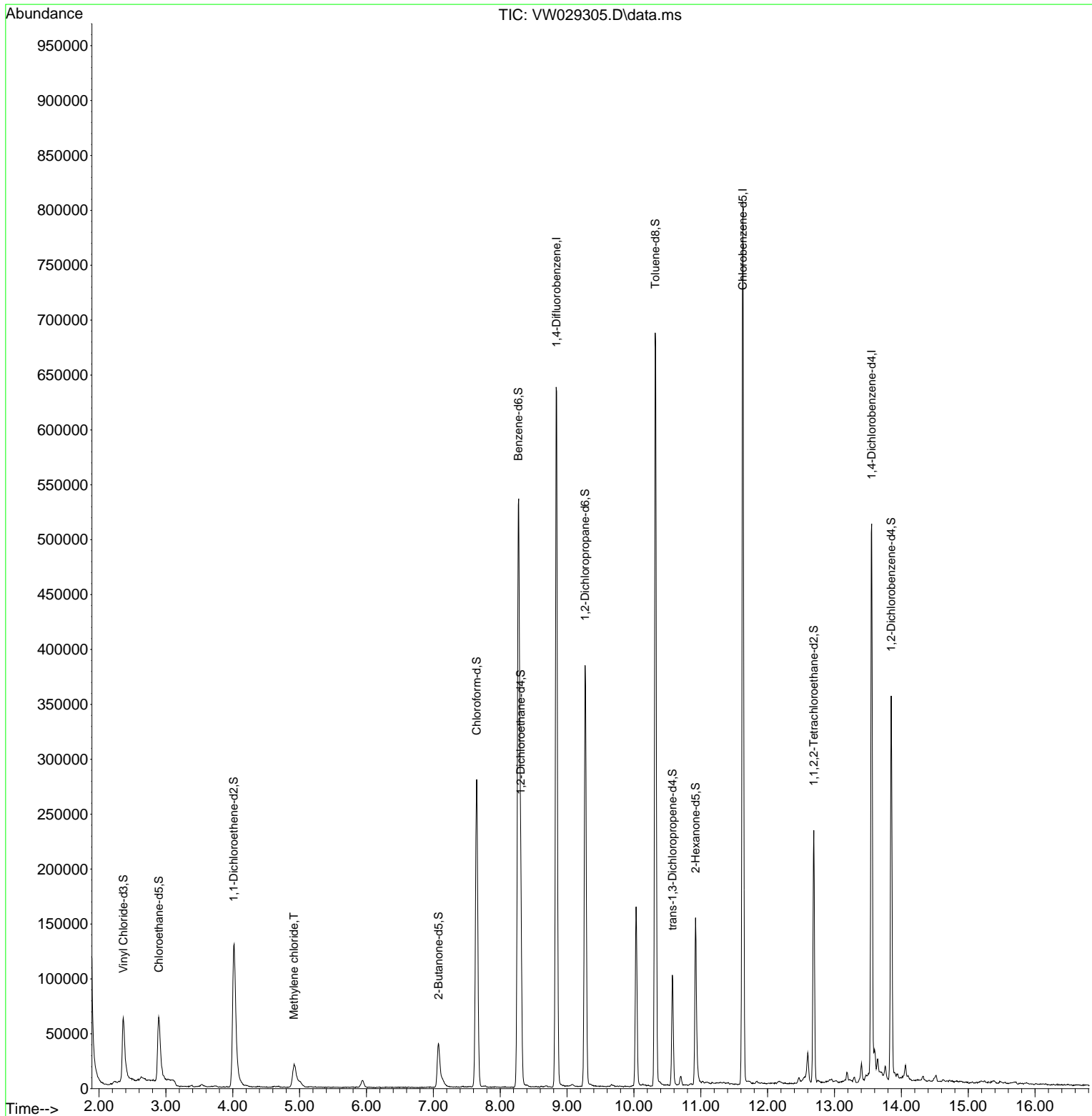
Compound	R.T.	QIon	Response	Conc	Units	Dev(Min)
Internal Standards						
1) 1,4-Difluorobenzene	8.843	114	504991	25.000	ug/L	0.00
28) Chlorobenzene-d5	11.629	117	412912	25.000	ug/L	0.00
58) 1,4-Dichlorobenzene-d4	13.556	152	123993	25.000	ug/L	0.00
System Monitoring Compounds						
4) Vinyl Chloride-d3	2.363	65	110749	15.845	ug/L	0.00
Spiked Amount	25.000	Range 30 - 150	Recovery =	63.360%		
7) Chloroethane-d5	2.893	69	99208	16.808	ug/L	-0.01
Spiked Amount	25.000	Range 30 - 150	Recovery =	67.240%		
11) 1,1-Dichloroethene-d2	4.015	65	55525	16.453	ug/L	0.00
Spiked Amount	25.000	Range 45 - 110	Recovery =	65.800%		
21) 2-Butanone-d5	7.075	46	68570	32.790	ug/L	0.00
Spiked Amount	50.000	Range 20 - 135	Recovery =	65.580%		
24) Chloroform-d	7.648	84	279565	18.558	ug/L	0.00
Spiked Amount	25.000	Range 40 - 150	Recovery =	74.240%		
26) 1,2-Dichloroethane-d4	8.307	65	153610	17.760	ug/L	0.00
Spiked Amount	25.000	Range 70 - 130	Recovery =	71.040%		
32) Benzene-d6	8.270	84	526884	21.008	ug/L	0.00
Spiked Amount	25.000	Range 20 - 135	Recovery =	84.040%		
36) 1,2-Dichloropropane-d6	9.270	67	175434	22.005	ug/L	0.00
Spiked Amount	25.000	Range 70 - 120	Recovery =	88.000%		
41) Toluene-d8	10.319	98	436023	19.650	ug/L	0.00
Spiked Amount	25.000	Range 30 - 130	Recovery =	78.600%		
43) trans-1,3-Dichloroprop...	10.575	79	53015	16.502	ug/L	0.00
Spiked Amount	25.000	Range 30 - 135	Recovery =	66.000%		
47) 2-Hexanone-d5	10.922	63	47009	37.614	ug/L	0.00
Spiked Amount	50.000	Range 20 - 135	Recovery =	75.220%		
56) 1,1,2,2-Tetrachloroeth...	12.690	84	111828	17.624	ug/L	0.00
Spiked Amount	25.000	Range 45 - 120	Recovery =	70.480%		
66) 1,2-Dichlorobenzene-d4	13.849	152	84833	19.711	ug/L	0.00
Spiked Amount	25.000	Range 75 - 120	Recovery =	78.840%		
Target Compounds						
16) Methylene chloride	4.917	84	19717	2.220	ug/L	97

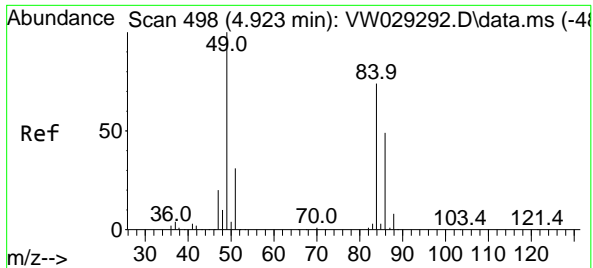
(#) = qualifier out of range (m) = manual integration (+) = signals summed

Data Path : Z:\voasrv\HPCHEM1\MSVOA_W\Data\VW062124\
 Data File : VW029305.D
 Acq On : 21 Jun 2024 16:22
 Operator : SY/MD
 Sample : P2982-06
 Misc : 4.88g/10mL/MSVOA_W/SOIL/A
 ALS Vial : 16 Sample Multiplier: 1

Instrument :
 MSVOA_W
 ClientSampleId :
 A4CF0

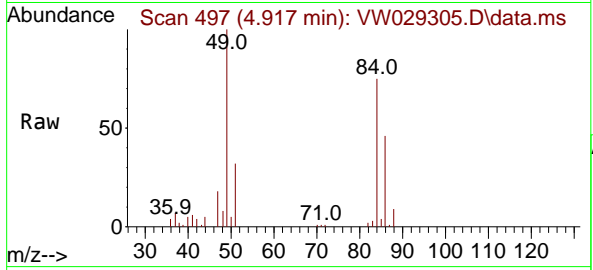
Quant Time: Jun 21 22:57:24 2024
 Quant Method : Z:\voasrv\HPCHEM1\MSVOA_W\Method\SFAMWLM061824SMA.M
 Quant Title : SFAM01.0
 QLast Update : Fri Jun 21 22:53:01 2024
 Response via : Initial Calibration





#16
 Methylene chloride
 Concen: 2.220 ug/L
 RT: 4.917 min Scan# 49
 Delta R.T. -0.006 min
 Lab File: VW029305.D
 Acq: 21 Jun 2024 16:22

Instrument :
 MSVOA_W
 ClientSampleId :
 A4CF0



Tgt Ion: 84 Resp: 19717

Ion	Ratio	Lower	Upper
84	100		
86	60.6	41.4	77.0
49	133.1	95.7	177.7

