

Data Path : Z:\voasrv\HPCHEM1\MSVOA_W\Data\VW062221\
 Data File : VW019265.D
 Acq On : 22 Jun 2021 13:46
 Operator : SY/VA
 Sample : M2778-08
 Misc : 5.00G/5ML/MSVOA_W/SOIL
 ALS Vial : 10 Sample Multiplier: 1

Instrument :
 MSVOA_W
 ClientSampled :

Quant Time: Jun 23 05:41:14 2021
 Quant Method : Z:\voasrv\HPCHEM1\MSVOA_W\Method\82W062121S.M
 Quant Title : SW846 8260
 QLast Update : Mon Jun 21 12:12:47 2021
 Response via : Initial Calibration

Compound	R.T.	QIon	Response	Conc	Units	Dev(Min)

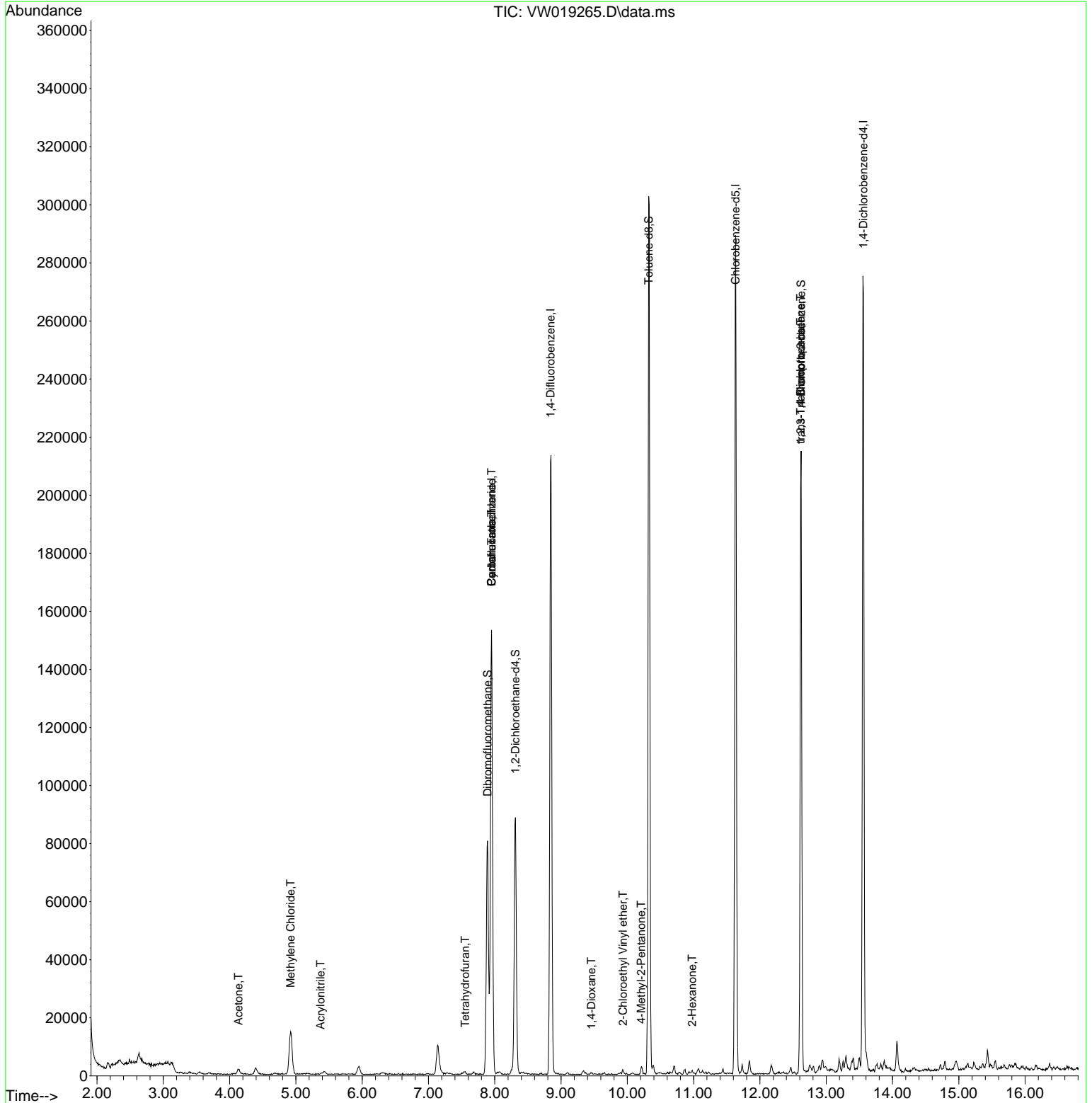
Internal Standards						
1) Pentafluorobenzene	7.951	168	106805	50.000	ug/l	0.00
34) 1,4-Difluorobenzene	8.841	114	178335	50.000	ug/l	0.00
63) Chlorobenzene-d5	11.634	117	158062	50.000	ug/l	0.00
72) 1,4-Dichlorobenzene-d4	13.560	152	69989	50.000	ug/l	0.00
System Monitoring Compounds						
33) 1,2-Dichloroethane-d4	8.311	65	71584	55.251	ug/l	0.00
Spiked Amount	50.000		Recovery	=	110.500%	
35) Dibromofluoromethane	7.890	113	57289	50.435	ug/l	0.00
Spiked Amount	50.000		Recovery	=	100.880%	
50) Toluene-d8	10.323	98	202422	44.516	ug/l	0.00
Spiked Amount	50.000		Recovery	=	89.040%	
62) 4-Bromofluorobenzene	12.621	95	71236	44.793	ug/l	0.00
Spiked Amount	50.000		Recovery	=	89.580%	
Target Compounds						
					Qvalue	
11) Tert butyl alcohol	5.190	59	245	Below Cal	#	71
15) Acrylonitrile	5.372	53	328	1.352	ug/l #	17
16) Acetone	4.135	43	3609	17.356	ug/l	98
20) Methylene Chloride	4.921	84	11759	2.262	ug/l	85
29) Tetrahydrofuran	7.555	42	711	3.743	ug/l #	75
31) Cyclohexane	7.951	56	3206	1.455	ug/l #	39
38) Carbon Tetrachloride	7.951	117	11470	6.952	ug/l #	16
49) 1,4-Dioxane	9.457	88	45	5.231	ug/l #	9
51) 4-Methyl-2-Pentanone	10.207	43	1791	2.625	ug/l	87
58) 2-Chloroethyl Vinyl ether	9.933	63	707	1.296	ug/l #	81
59) 2-Hexanone	10.975	43	994	2.151	ug/l	96
76) 1,2,3-Trichloropropane	12.615	75	38429	56.047	ug/l #	100
81) trans-1,4-Dichloro-2-b...	12.615	75	38429	135.967	ug/l #	9

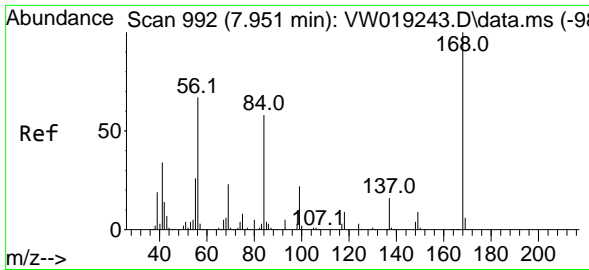
(#) = qualifier out of range (m) = manual integration (+) = signals summed

Data Path : Z:\voasrv\HPCHEM1\MSVOA_W\Data\VW062221\
 Data File : VW019265.D
 Acq On : 22 Jun 2021 13:46
 Operator : SY/VA
 Sample : M2778-08
 Misc : 5.00G/5ML/MSVOA_W/SOIL
 ALS Vial : 10 Sample Multiplier: 1

Instrument :
 MSVOA_W
 ClientSampled :

Quant Time: Jun 23 05:41:14 2021
 Quant Method : Z:\voasrv\HPCHEM1\MSVOA_W\Method\82W062121S.M
 Quant Title : SW846 8260
 QLast Update : Mon Jun 21 12:12:47 2021
 Response via : Initial Calibration

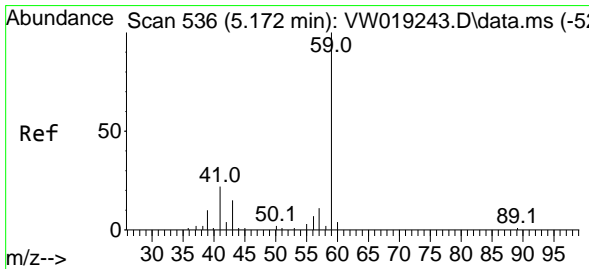
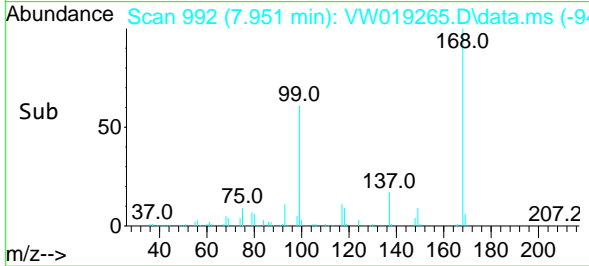
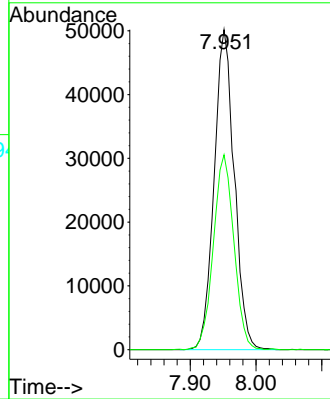
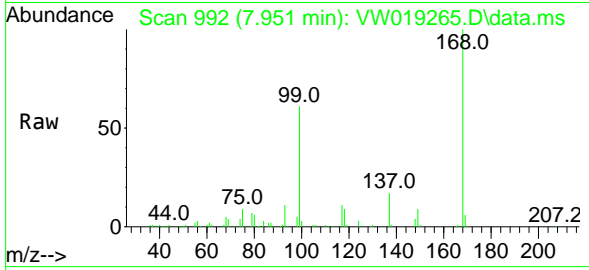




#1
 Pentafluorobenzene
 Concen: 50.000 ug/l
 RT: 7.951 min Scan# 992
 Delta R.T. 0.000 min
 Lab File: VW019265.D
 Acq: 22 Jun 2021 13:46

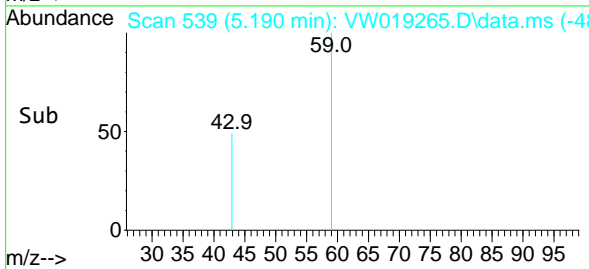
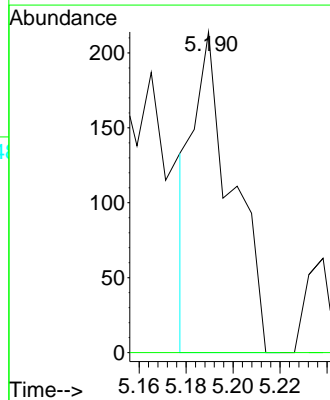
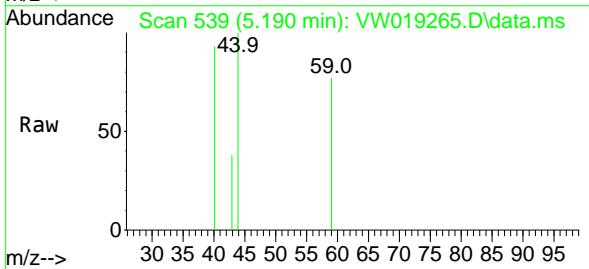
Instrument :
 MSVOA_W
 ClientSampled :

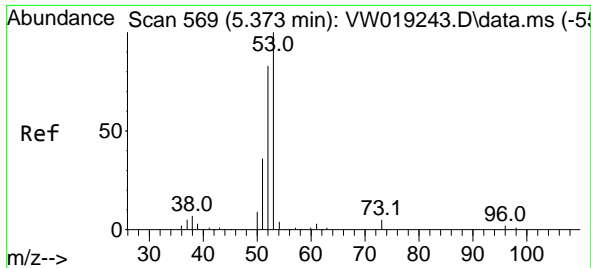
Tgt Ion:168 Resp: 106805
 Ion Ratio Lower Upper
 168 100
 99 60.9 48.8 73.2



#11
 Tert butyl alcohol
 Concen: Below Cal
 RT: 5.190 min Scan# 539
 Delta R.T. 0.018 min
 Lab File: VW019265.D
 Acq: 22 Jun 2021 13:46

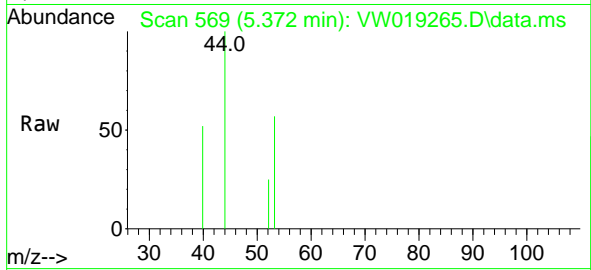
Tgt Ion: 59 Resp: 245
 Ion Ratio Lower Upper
 59 100
 57 0.0 8.9 13.3#





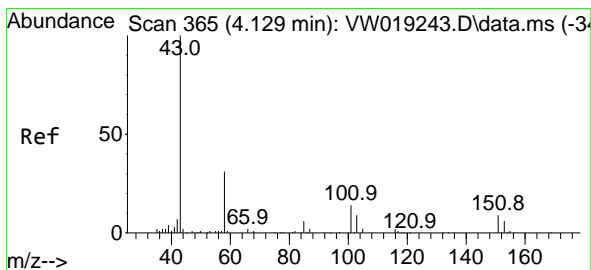
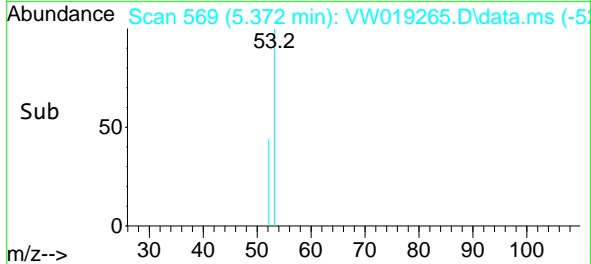
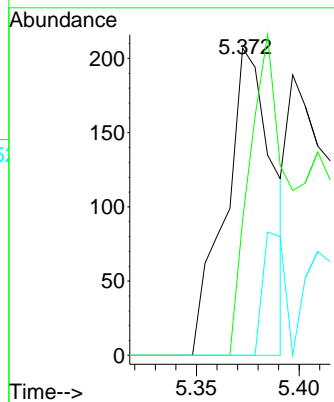
#15
 Acrylonitrile
 Concen: 1.352 ug/l
 RT: 5.372 min Scan# 569
 Delta R.T. -0.001 min
 Lab File: VW019265.D
 Acq: 22 Jun 2021 13:46

Instrument :
 MSVOA_W
 ClientSampled :

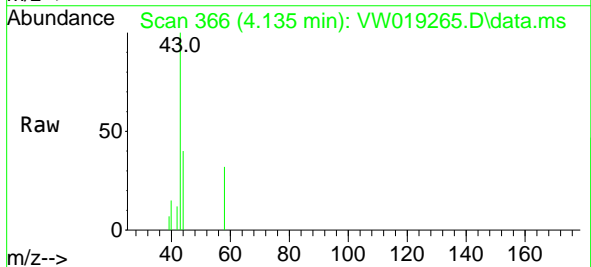


Tgt Ion: 53 Resp: 328

Ion	Ratio	Lower	Upper
53	100		
52	0.0	66.5	99.7#
51	0.0	29.8	44.8#

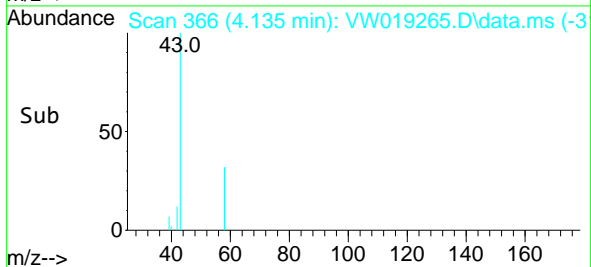
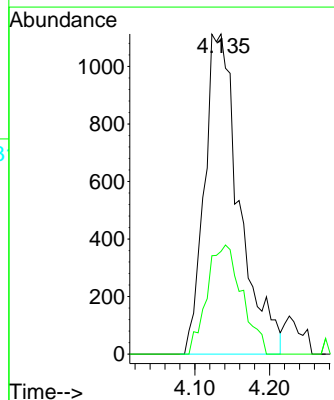


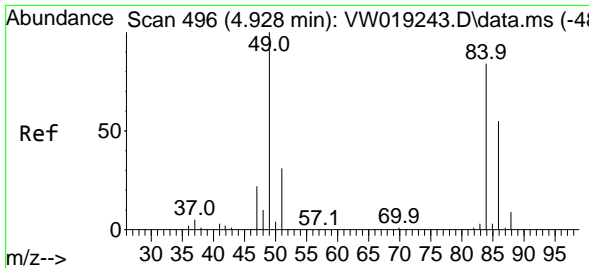
#16
 Acetone
 Concen: 17.356 ug/l
 RT: 4.135 min Scan# 366
 Delta R.T. 0.006 min
 Lab File: VW019265.D
 Acq: 22 Jun 2021 13:46



Tgt Ion: 43 Resp: 3609

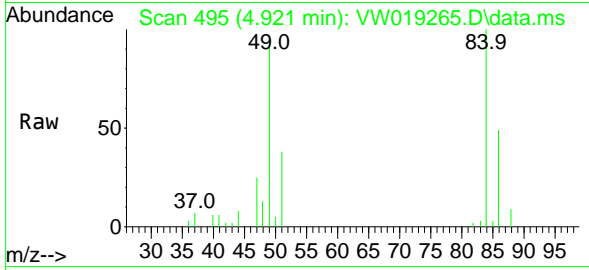
Ion	Ratio	Lower	Upper
43	100		
58	32.1	26.4	39.6





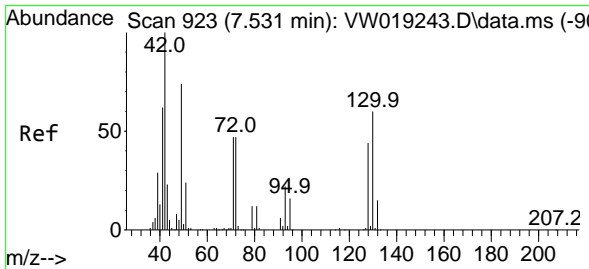
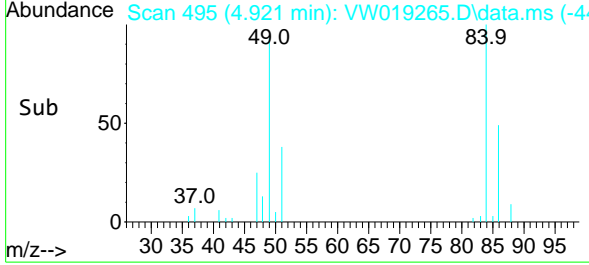
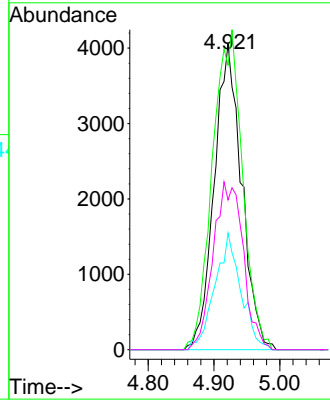
#20
 Methylene Chloride
 Concen: 2.262 ug/l
 RT: 4.921 min Scan# 495
 Delta R.T. -0.007 min
 Lab File: VW019265.D
 Acq: 22 Jun 2021 13:46

Instrument :
 MSVOA_W
 ClientSampled :

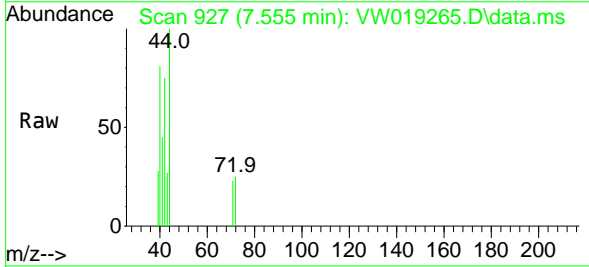


Tgt Ion: 84 Resp: 11759

Ion	Ratio	Lower	Upper
84	100		
49	93.1	90.4	135.6
51	38.1	27.1	40.7
86	49.0	47.6	71.4

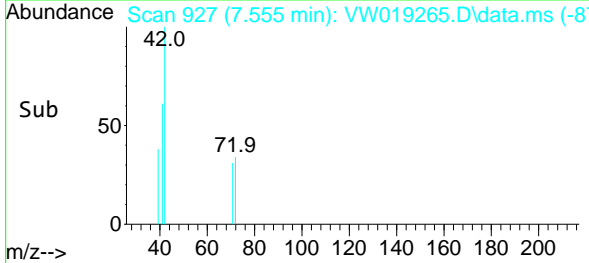
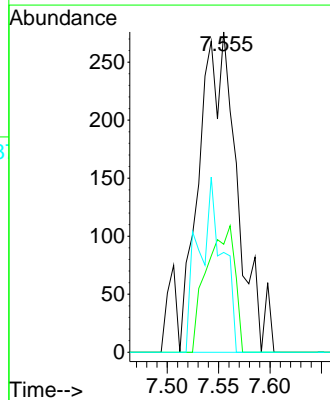


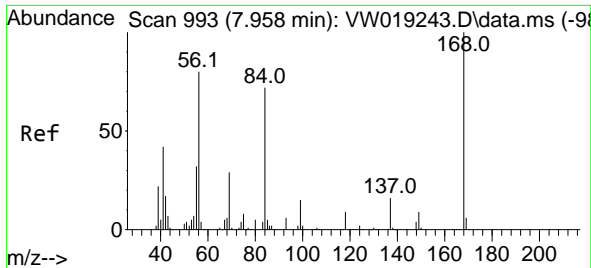
#29
 Tetrahydrofuran
 Concen: 3.743 ug/l
 RT: 7.555 min Scan# 927
 Delta R.T. 0.024 min
 Lab File: VW019265.D
 Acq: 22 Jun 2021 13:46



Tgt Ion: 42 Resp: 711

Ion	Ratio	Lower	Upper
42	100		
72	29.3	40.1	60.1#
71	34.5	38.3	57.5#

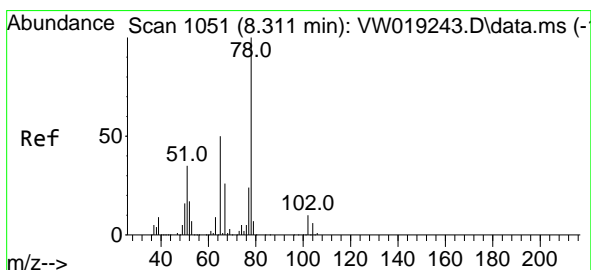
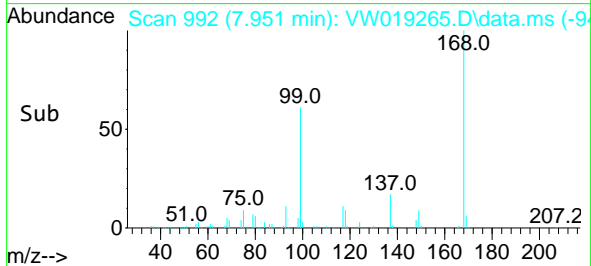
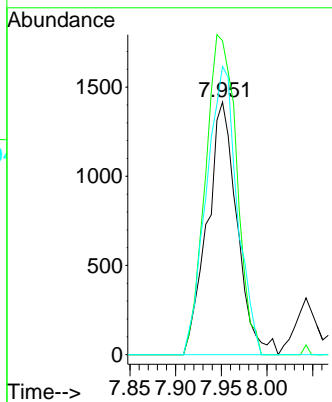
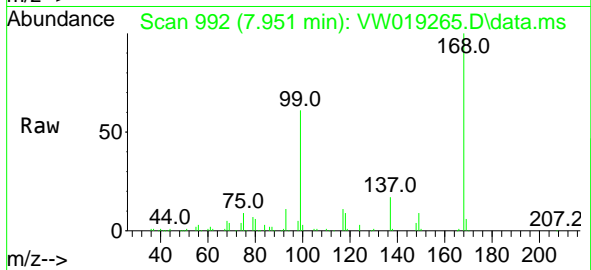




#31
 Cyclohexane
 Concen: 1.455 ug/l
 RT: 7.951 min Scan# 992
 Delta R.T. -0.007 min
 Lab File: VW019265.D
 Acq: 22 Jun 2021 13:46

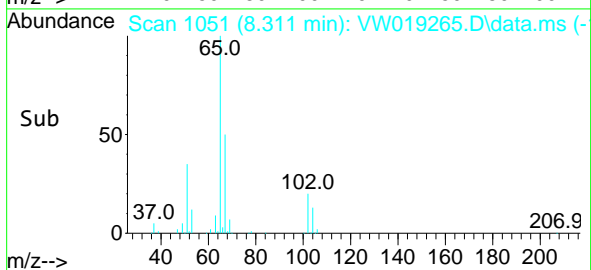
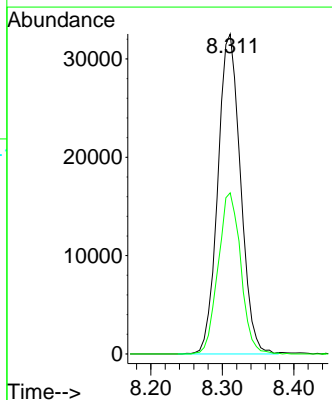
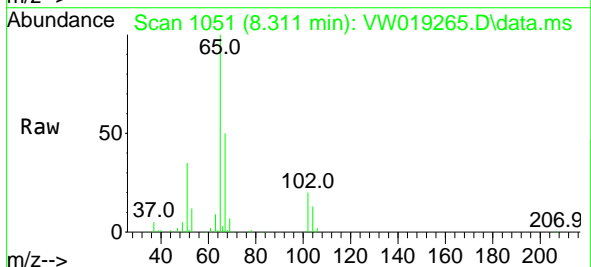
Instrument :
 MSVOA_W
 ClientSampled :

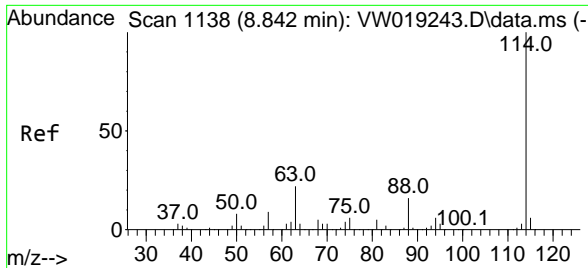
Tgt Ion	Resp	Lower	Upper
56	100		
69	124.4	28.4	42.6#
84	114.1	72.3	108.5#



#33
 1,2-Dichloroethane-d4
 Concen: 55.251 ug/l
 RT: 8.311 min Scan# 1051
 Delta R.T. -0.000 min
 Lab File: VW019265.D
 Acq: 22 Jun 2021 13:46

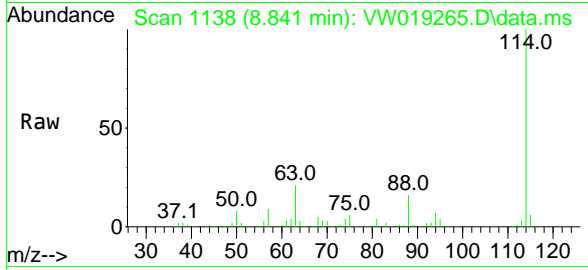
Tgt Ion	Resp	Lower	Upper
65	100		
67	50.3	0.0	104.0





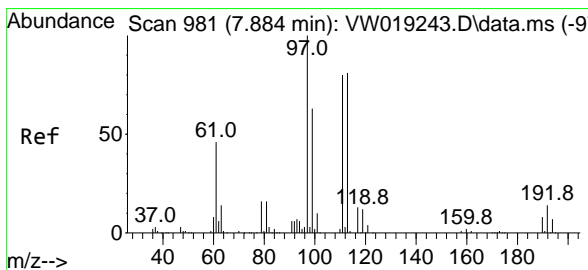
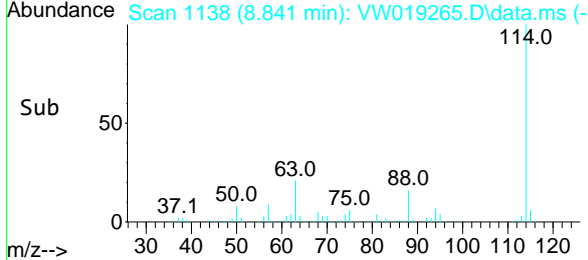
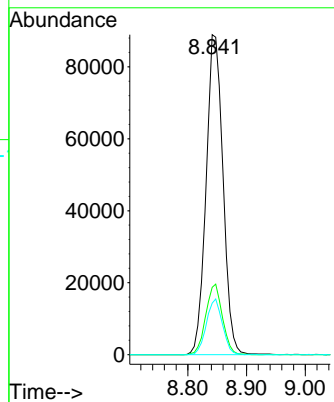
#34
 1,4-Difluorobenzene
 Concen: 50.000 ug/l
 RT: 8.841 min Scan# 1138
 Delta R.T. -0.001 min
 Lab File: VW019265.D
 Acq: 22 Jun 2021 13:46

Instrument :
 MSVOA_W
 ClientSampled :

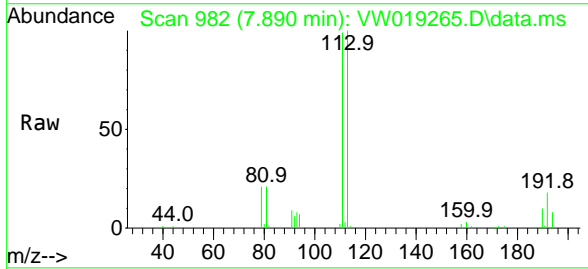


Tgt Ion:114 Resp: 178335

Ion	Ratio	Lower	Upper
114	100		
63	21.0	0.0	42.4
88	16.1	0.0	33.2

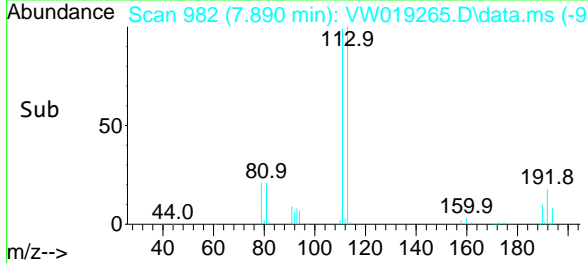
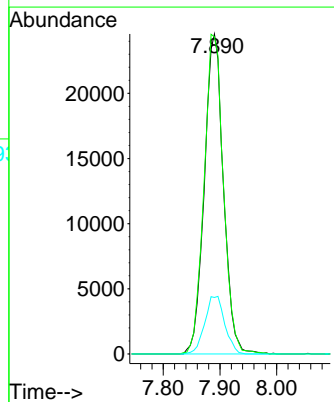


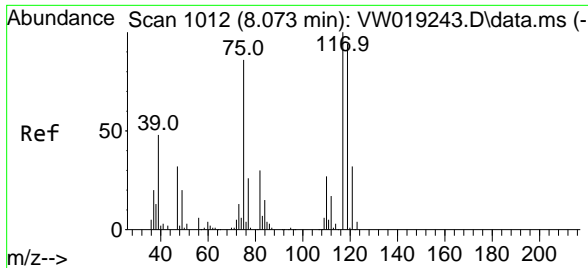
#35
 Dibromofluoromethane
 Concen: 50.435 ug/l
 RT: 7.890 min Scan# 982
 Delta R.T. 0.006 min
 Lab File: VW019265.D
 Acq: 22 Jun 2021 13:46



Tgt Ion:113 Resp: 57289

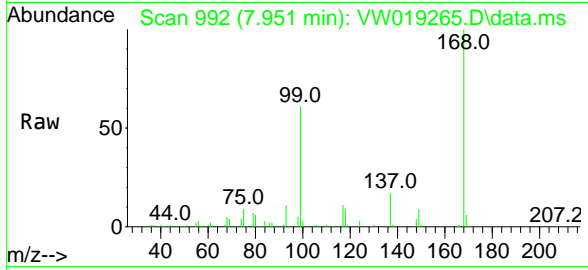
Ion	Ratio	Lower	Upper
113	100		
111	101.5	82.3	123.5
192	18.9	15.3	22.9





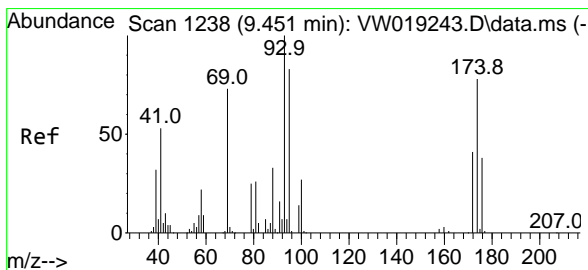
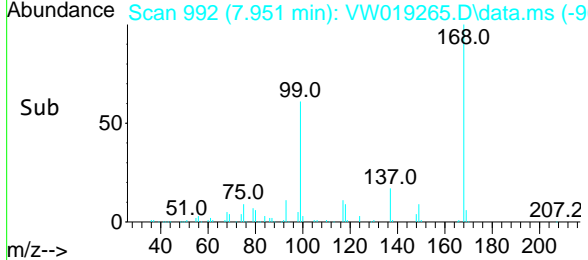
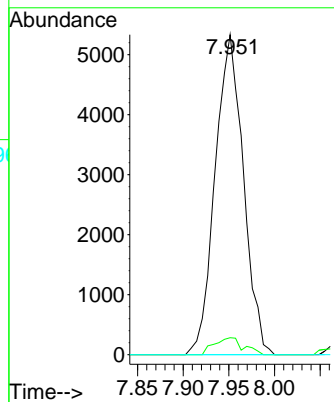
#38
 Carbon Tetrachloride
 Concen: 6.952 ug/l
 RT: 7.951 min Scan# 992
 Delta R.T. -0.122 min
 Lab File: VW019265.D
 Acq: 22 Jun 2021 13:46

Instrument :
 MSVOA_W
 ClientSampled :



Tgt Ion: 117 Resp: 11470

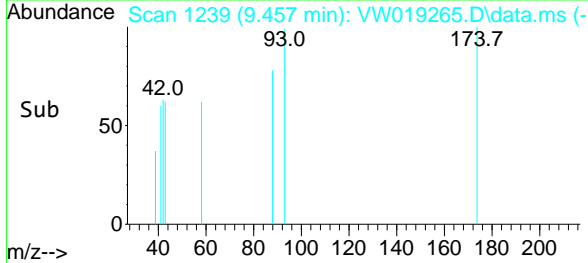
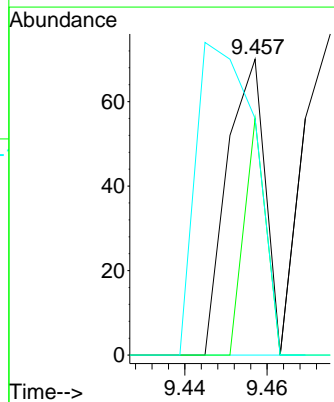
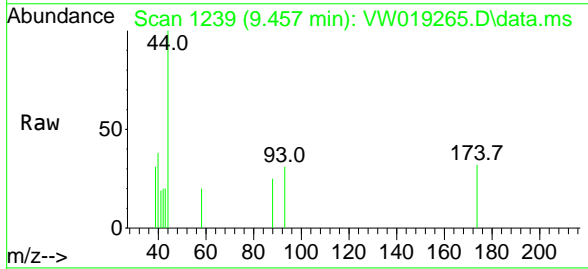
Ion	Ratio	Lower	Upper
117	100		
119	5.3	77.4	116.0#
121	0.0	23.6	35.4#

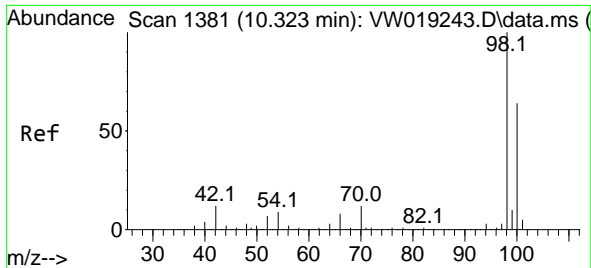


#49
 1,4-Dioxane
 Concen: 5.231 ug/l
 RT: 9.457 min Scan# 1239
 Delta R.T. 0.006 min
 Lab File: VW019265.D
 Acq: 22 Jun 2021 13:46

Tgt Ion: 88 Resp: 45

Ion	Ratio	Lower	Upper
88	100		
43	44.4	22.1	33.1#
58	162.2	55.4	83.2#

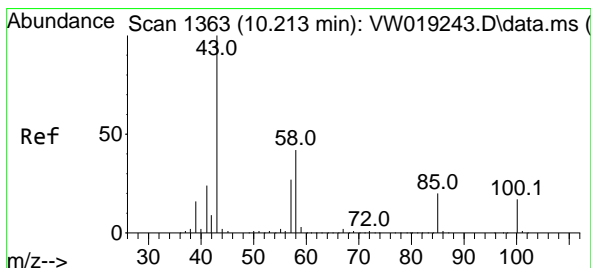
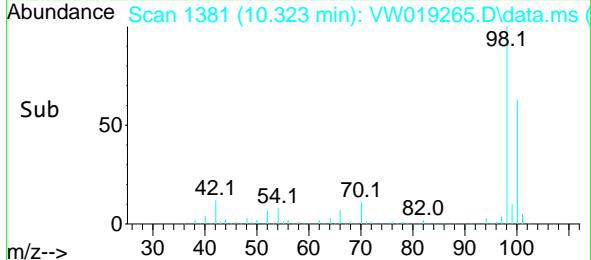
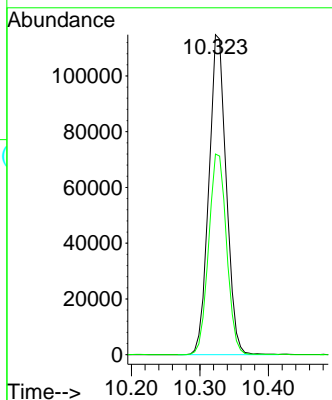
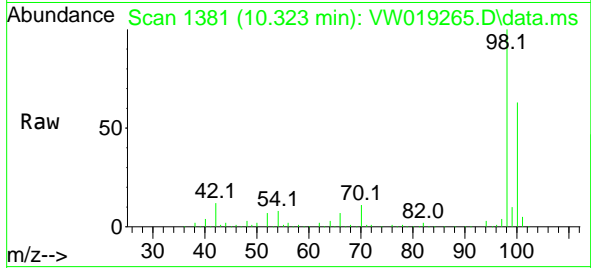




#50
 Toluene-d8
 Concen: 44.516 ug/l
 RT: 10.323 min Scan# 1381
 Delta R.T. -0.000 min
 Lab File: VW019265.D
 Acq: 22 Jun 2021 13:46

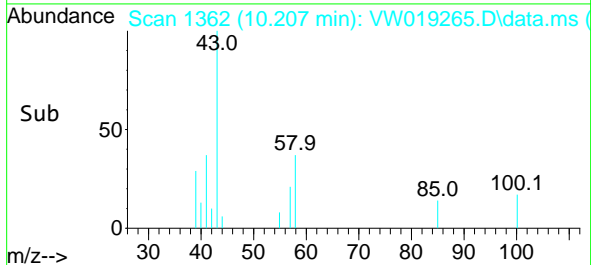
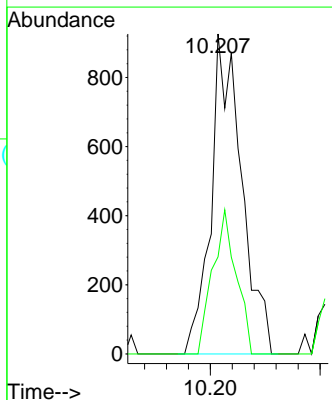
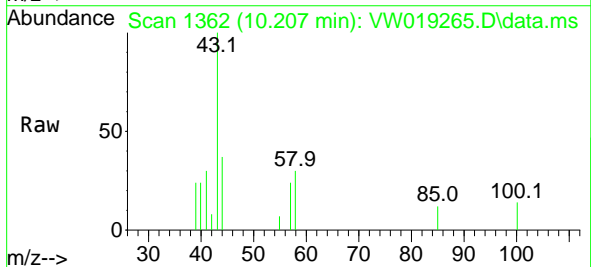
Instrument :
 MSVOA_W
 ClientSampled :

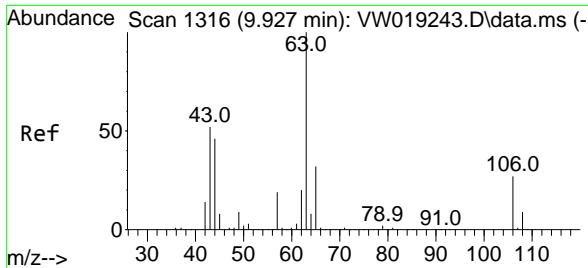
Tgt Ion: 98 Resp: 202422
 Ion Ratio Lower Upper
 98 100
 100 64.6 52.0 78.0



#51
 4-Methyl-2-Pentanone
 Concen: 2.625 ug/l
 RT: 10.207 min Scan# 1362
 Delta R.T. -0.006 min
 Lab File: VW019265.D
 Acq: 22 Jun 2021 13:46

Tgt Ion: 43 Resp: 1791
 Ion Ratio Lower Upper
 43 100
 58 34.7 34.2 51.4

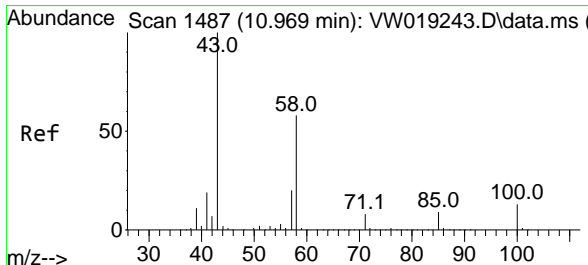
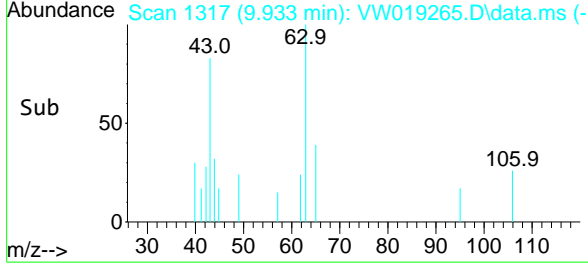
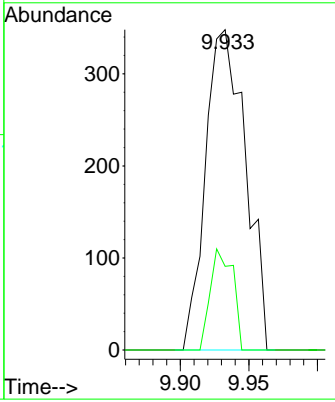
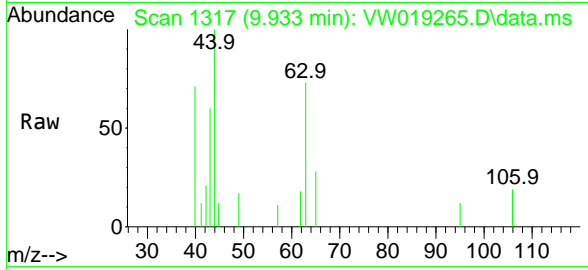




#58
 2-Chloroethyl Vinyl ether
 Concen: 1.296 ug/l
 RT: 9.933 min Scan# 1317
 Delta R.T. 0.006 min
 Lab File: VW019265.D
 Acq: 22 Jun 2021 13:46

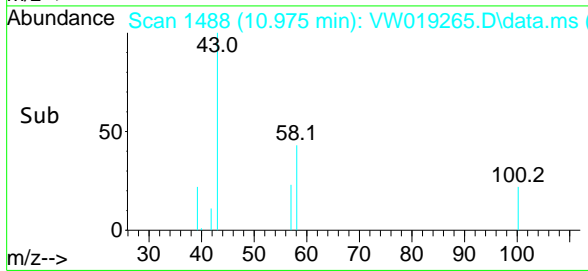
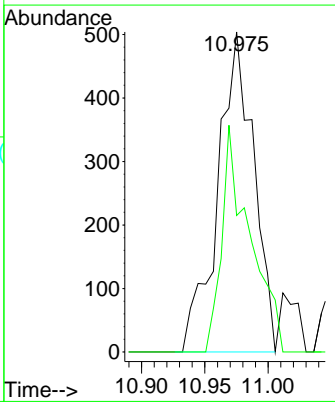
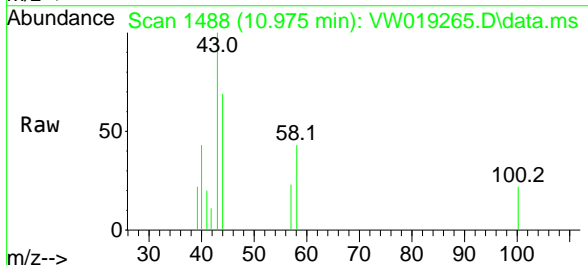
Instrument :
 MSVOA_W
 ClientSampled :

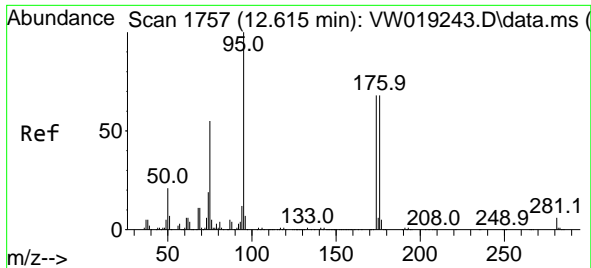
Tgt Ion: 63 Resp: 707
 Ion Ratio Lower Upper
 63 100
 106 17.8 22.3 33.5#



#59
 2-Hexanone
 Concen: 2.151 ug/l
 RT: 10.975 min Scan# 1488
 Delta R.T. 0.006 min
 Lab File: VW019265.D
 Acq: 22 Jun 2021 13:46

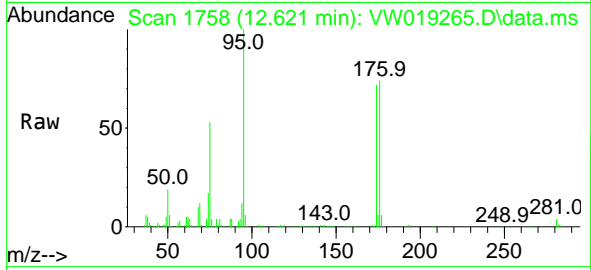
Tgt Ion: 43 Resp: 994
 Ion Ratio Lower Upper
 43 100
 58 55.2 29.0 87.1





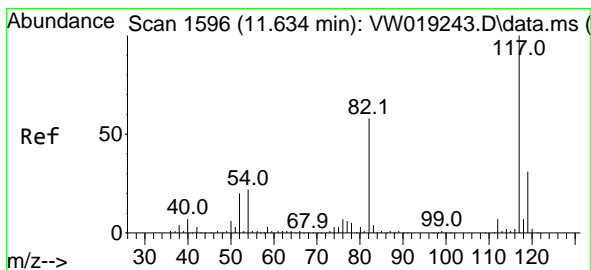
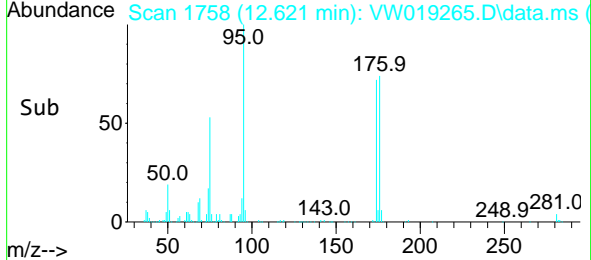
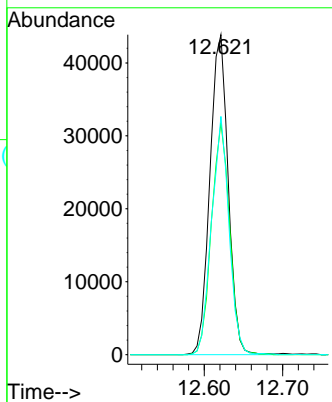
#62
 4-Bromofluorobenzene
 Concen: 44.793 ug/l
 RT: 12.621 min Scan# 1758
 Delta R.T. 0.006 min
 Lab File: VW019265.D
 Acq: 22 Jun 2021 13:46

Instrument :
 MSVOA_W
 ClientSampled :

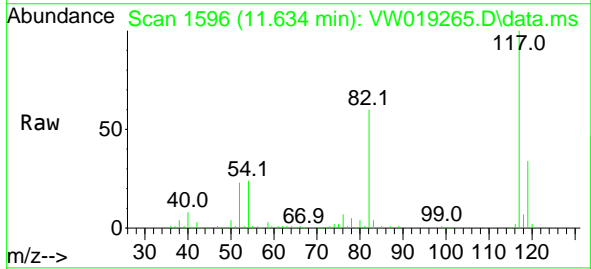


Tgt Ion: 95 Resp: 71236

Ion	Ratio	Lower	Upper
95	100		
174	71.7	0.0	156.2
176	70.8	0.0	160.8

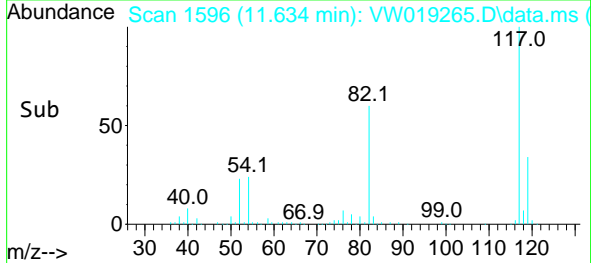
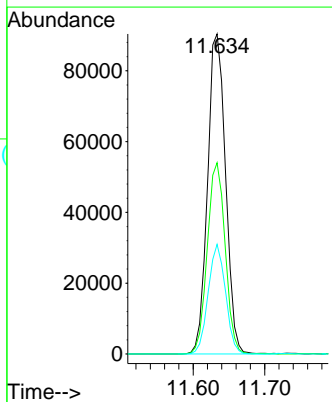


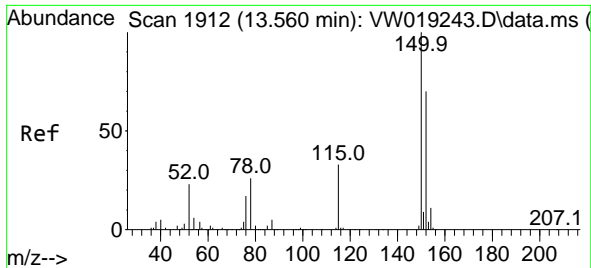
#63
 Chlorobenzene-d5
 Concen: 50.000 ug/l
 RT: 11.634 min Scan# 1596
 Delta R.T. -0.001 min
 Lab File: VW019265.D
 Acq: 22 Jun 2021 13:46



Tgt Ion: 117 Resp: 158062

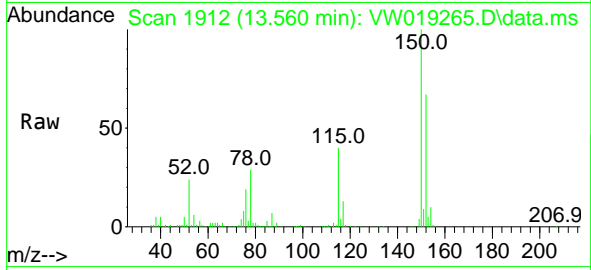
Ion	Ratio	Lower	Upper
117	100		
82	59.7	44.4	66.6
119	34.3	24.6	36.8



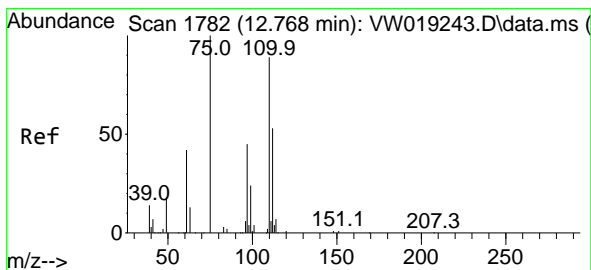
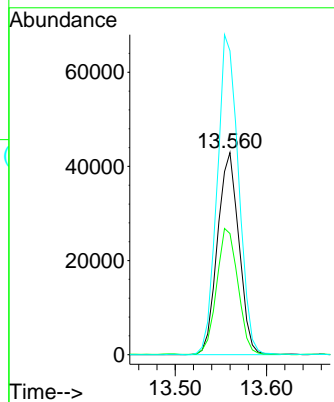
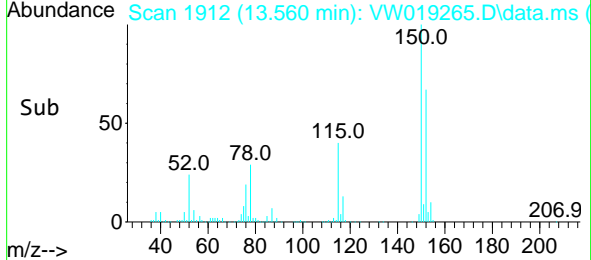


#72
 1,4-Dichlorobenzene-d4
 Concen: 50.000 ug/l
 RT: 13.560 min Scan# 1912
 Delta R.T. -0.000 min
 Lab File: VW019265.D
 Acq: 22 Jun 2021 13:46

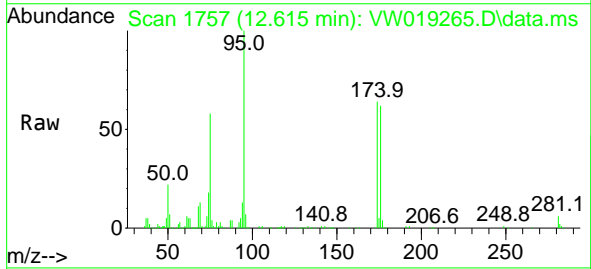
Instrument :
 MSVOA_W
 ClientSampled :



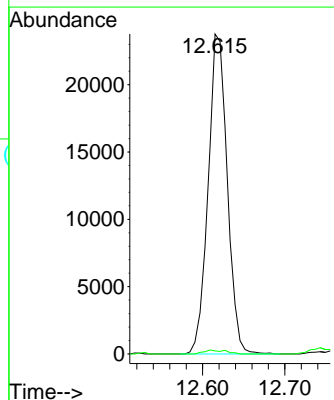
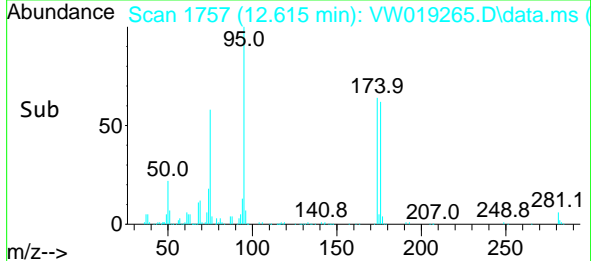
Tgt Ion:152 Resp: 69989
 Ion Ratio Lower Upper
 152 100
 115 62.5 30.3 90.8
 150 158.1 0.0 356.0

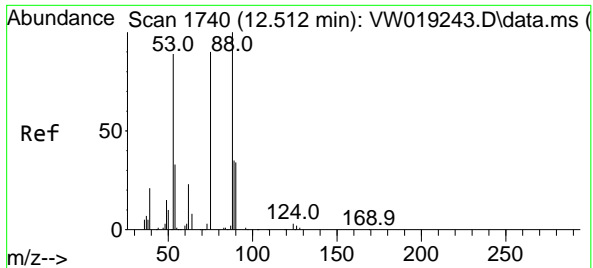


#76
 1,2,3-Trichloropropane
 Concen: 56.047 ug/l
 RT: 12.615 min Scan# 1757
 Delta R.T. -0.153 min
 Lab File: VW019265.D
 Acq: 22 Jun 2021 13:46



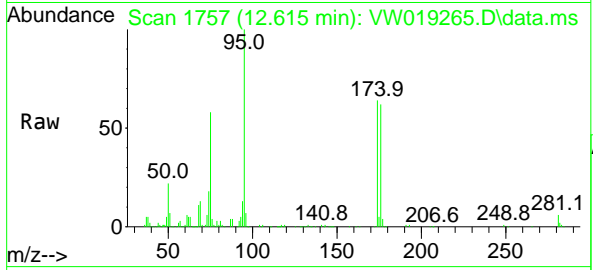
Tgt Ion: 75 Resp: 38429
 Ion Ratio Lower Upper
 75 100
 77 1.4 0.0 0.0#





#81
 trans-1,4-Dichloro-2-butene
 Concen: 135.967 ug/l
 RT: 12.615 min Scan# 1757
 Delta R.T. 0.103 min
 Lab File: VW019265.D
 Acq: 22 Jun 2021 13:46

Instrument :
 MSVOA_W
 ClientSampled :



Tgt Ion: 75 Resp: 38429

Ion	Ratio	Lower	Upper
75	100		
53	0.1	81.5	122.3#
89	0.0	36.3	54.5#

