

Data Path : Z:\VOASRV\HPCHEM1\MSVOA W\DATA\VW062420\
 Data File : VW015683.D
 Acq On : 24 Jun 2020 15:20
 Operator : SY/VA
 Sample : L3082-06
 Misc : 4.25G/5ML/MSVOA W/SOIL
 ALS Vial : 13 Sample Multiplier: 1

Instrument :
 MSVOA_W
 ClientSampleId :
 SB-7

Integration Parameters: RTEINT.P
 Integrator: RTE
 Smoothing : ON Filtering: 5
 Sampling : 1 Min Area: 3 % of largest Peak
 Start Thrs: 0.2 Max Peaks: 100
 Stop Thrs : 0 Peak Location: TOP

If leading or trailing edge < 100 prefer < Baseline drop else tangent >
 Peak separation: 5

Method : Z:\VOASRV\HPCHEM1\MSVOA_W\METHOD\82W062320S.M
 Title : SW846 8260

Signal : TIC

peak #	R.T. min	first scan	max scan	last scan	PK TY	peak height	corr. area	corr. % max.	% of total
1	4.916	483	494	516	rVB3	13223	49262	5.33%	1.035%
2	5.934	654	661	673	rVB4	3219	9606	1.04%	0.202%
3	7.153	851	861	872	rBV2	9588	27386	2.96%	0.575%
4	7.885	969	981	986	rBV	127885	293708	31.76%	6.171%
5	7.952	986	992	1004	rVB	208414	458626	49.59%	9.636%
6	8.311	1035	1051	1060	rBV	126643	278520	30.11%	5.852%
7	8.842	1129	1138	1150	rBV	330745	658396	71.19%	13.833%
8	10.323	1373	1381	1390	rBV	517430	924901	100.00%	19.432%
9	11.634	1588	1596	1605	rBV	472697	783303	84.69%	16.457%
10	12.621	1749	1758	1768	rBV	356892	579786	62.69%	12.181%
11	13.560	1905	1912	1922	rBV	434412	696252	75.28%	14.628%

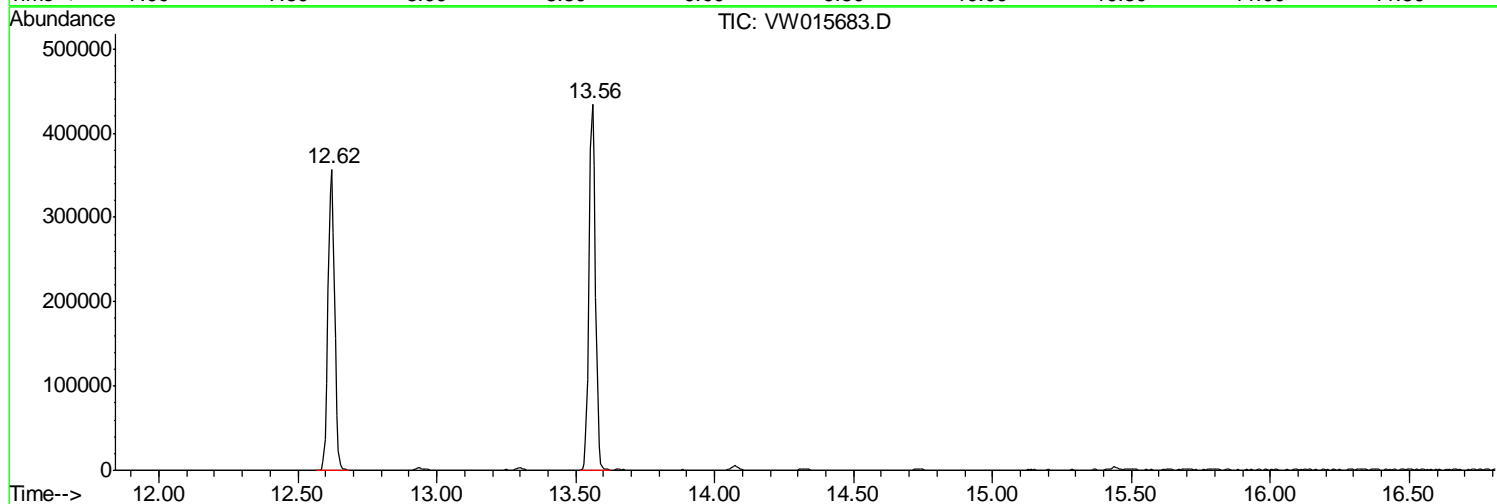
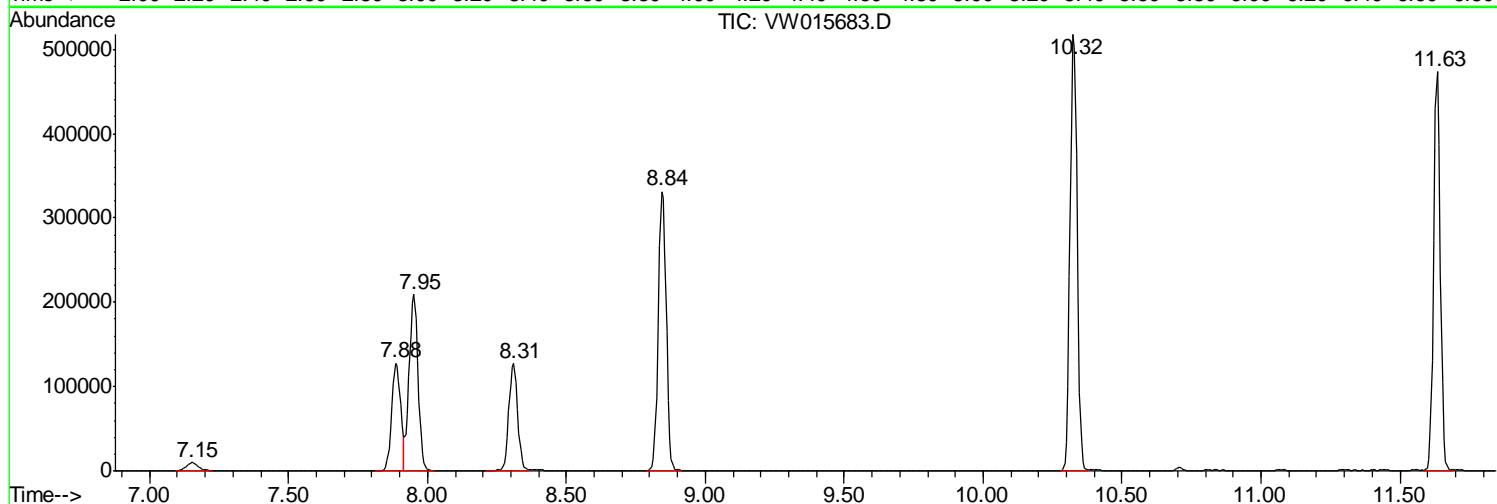
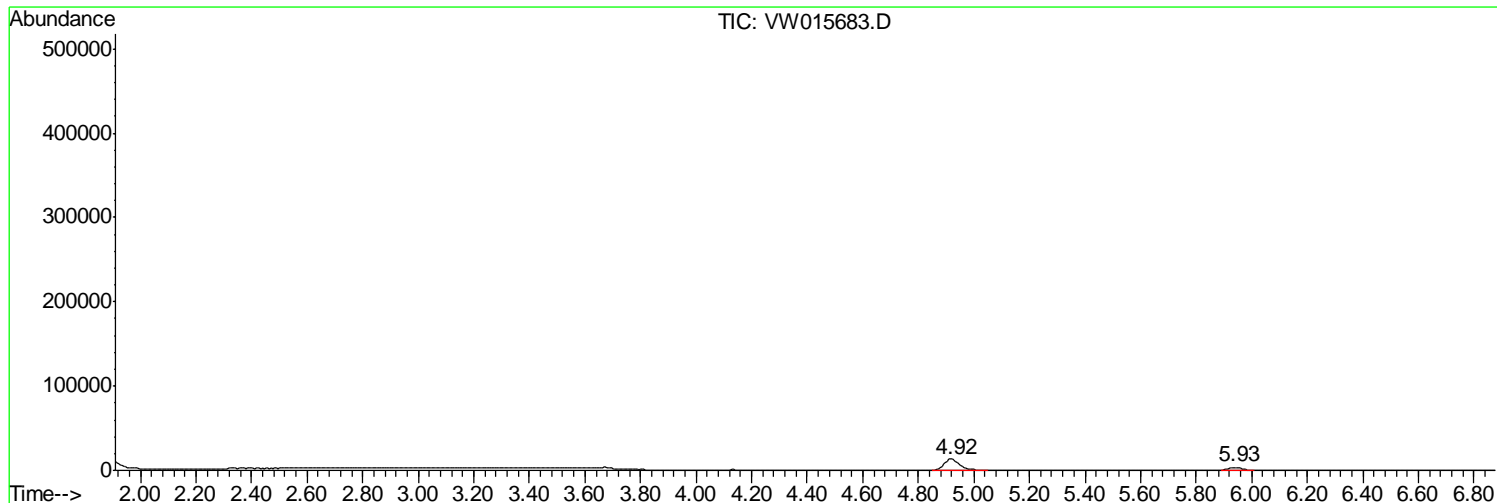
Sum of corrected areas: 4759746

Data Path : Z:\VOASRV\HPCHEM1\MSVOA W\DATA\VW062420\
Data File : VW015683.D
Acq On : 24 Jun 2020 15:20
Operator : SY/VA
Sample : L3082-06
Misc : 4.25G/5ML/MSVOA W/SOIL
ALS Vial : 13 Sample Multiplier: 1

Instrument :
MSVOA_W
ClientSampled :
SB-7

Quant Method : Z:\VOASRV\HPCHEM1\MSVOA_W\METHOD\82W062320S.M
Quant Title : SW846 8260

TIC Library : C:\DATABASE\NIST11.L
TIC Integration Parameters: LSCINT.P



Data Path : Z:\VOASRV\HPCHEM1\MSVOA_W\DATA\VW062420\
Data File : VW015683.D
Acq On : 24 Jun 2020 15:20
Operator : SY/VA
Sample : L3082-06
Misc : 4.25G/5ML/MSVOA_W/SOIL
ALS Vial : 13 Sample Multiplier: 1

Instrument :
MSVOA_W
ClientSampleId :
SB-7

Quant Method : Z:\VOASRV\HPCHEM1\MSVOA_W\METHOD\82W062320S.M
Quant Title : SW846 8260

TIC Library : C:\DATABASE\NIST11.L
TIC Integration Parameters: LSCINT.P

No Library Search Compounds Detected

Data Path : Z:\VOASRV\HPCHEM1\MSVOA_W\DATA\VW062420\
Data File : VW015683.D
Acq On : 24 Jun 2020 15:20
Operator : SY/VA
Sample : L3082-06
Misc : 4.25G/5ML/MSVOA_W/SOIL
ALS Vial : 13 Sample Multiplier: 1

Instrument :
MSVOA_W
ClientSampleId :
SB-7

Quant Method : Z:\VOASRV\HPCHEM1\MSVOA_W\METHOD\82W062320S.M
Quant Title : SW846 8260

TIC Library : C:\DATABASE\NIST11.L
TIC Integration Parameters: LSCINT.P

TIC Top Hit name	RT	EstConc	Units	Response	--Internal Standard--			
					#	RT	Resp	Conc
