

Data Path : Z:\VOASRV\HPCHEM1\MSVOA W\DATA\VW062718\  
 Data File : VW003585.D  
 Acq On : 26 Jun 2018 23:14  
 Operator : SY/AP  
 Sample : J3684-10  
 Misc : 5.98G/5ML/MSVOA W/SOIL  
 ALS Vial : 15 Sample Multiplier: 1

Instrument :  
 MSVOA\_W  
 ClientSampleId :  
 TP-1-D

Quant Time: Jun 27 08:04:47 2018  
 Quant Method : Z:\VOASRV\HPCHEM1\MSVOA\_W\METHOD\82W061318S.M  
 Quant Title : SW846 8260  
 QLast Update : Sat Jun 16 05:18:54 2018  
 Response via : Initial Calibration

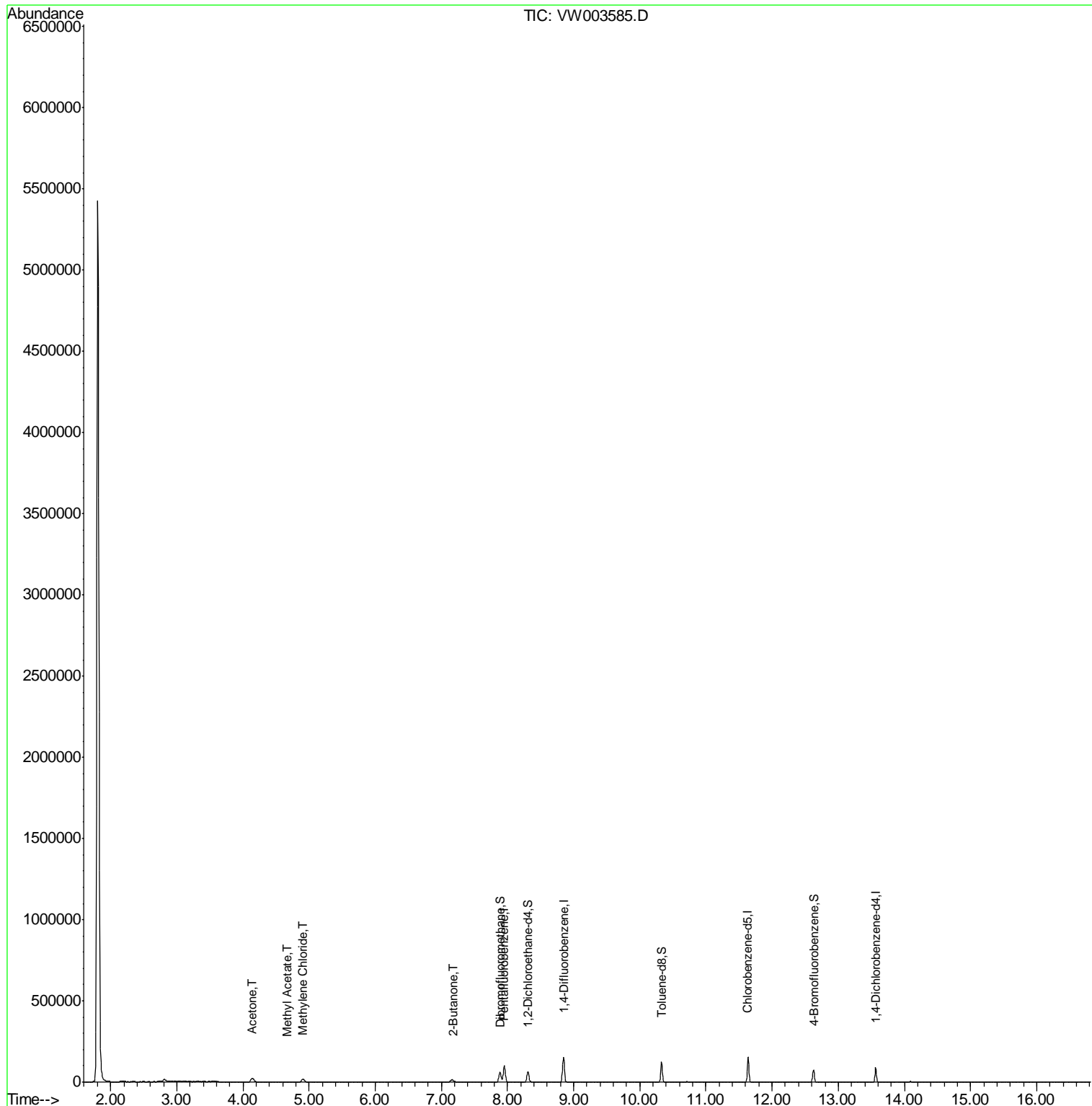
Internal Standards	R.T.	QIon	Response	Conc	Units	Dev(Min)
1) Pentafluorobenzene	7.95	168	73139	50.00	ug/l	0.00
34) 1,4-Difluorobenzene	8.85	114	117129	50.00	ug/l	0.00
63) Chlorobenzene-d5	11.63	117	80647	50.00	ug/l	0.00
72) 1,4-Dichlorobenzene-d4	13.57	152	22045	50.00	ug/l	0.00
System Monitoring Compounds						
33) 1,2-Dichloroethane-d4	8.31	65	50293	63.48	ug/l	0.00
Spiked Amount				50.000		
			Recovery	=	126.96%	
35) Dibromofluoromethane	7.88	113	43836	60.23	ug/l	0.00
Spiked Amount				50.000		
			Recovery	=	120.46%	
50) Toluene-d8	10.33	98	79005	27.38	ug/l	0.00
Spiked Amount				50.000		
			Recovery	=	54.76%	
62) 4-Bromofluorobenzene	12.63	95	21438	20.99	ug/l	0.00
Spiked Amount				50.000		
			Recovery	=	41.98%	
Target Compounds						
16) Acetone	4.14	43	48304	290.73	ug/l	96
18) Methyl Acetate	4.67	43	4294	10.89	ug/l	97
20) Methylene Chloride	4.91	84	12902	15.77	ug/l	95
25) 2-Butanone	7.18	43	4593	22.23	ug/l	90

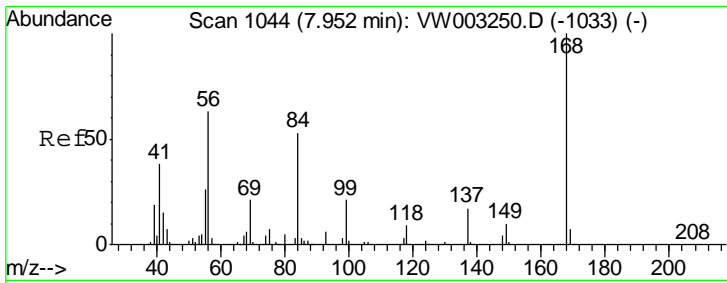
(#) = qualifier out of range (m) = manual integration (+) = signals summed

Data Path : Z:\VOASRV\HPCHEM1\MSVOA W\DATA\VW062718\  
 Data File : VW003585.D  
 Acq On : 26 Jun 2018 23:14  
 Operator : SY/AP  
 Sample : J3684-10  
 Misc : 5.98G/5ML/MSVOA W/SOIL  
 ALS Vial : 15 Sample Multiplier: 1

Instrument :  
 MSVOA\_W  
 ClientSampleId :  
 TP-1-D

Quant Time: Jun 27 08:04:47 2018  
 Quant Method : Z:\VOASRV\HPCHEM1\MSVOA\_W\METHOD\82W061318S.M  
 Quant Title : SW846 8260  
 QLast Update : Sat Jun 16 05:18:54 2018  
 Response via : Initial Calibration

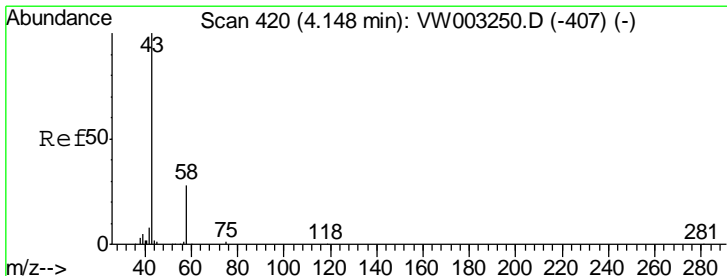
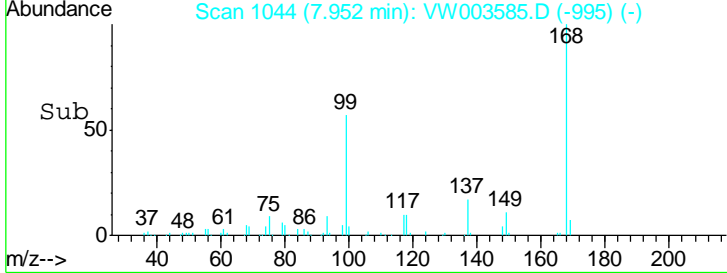
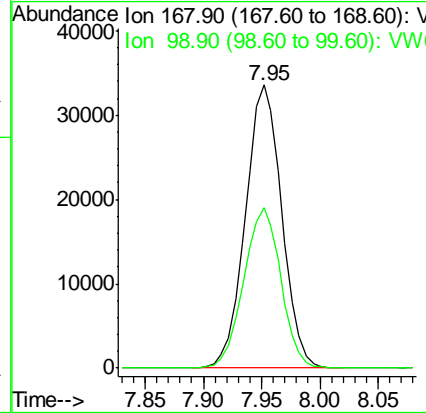
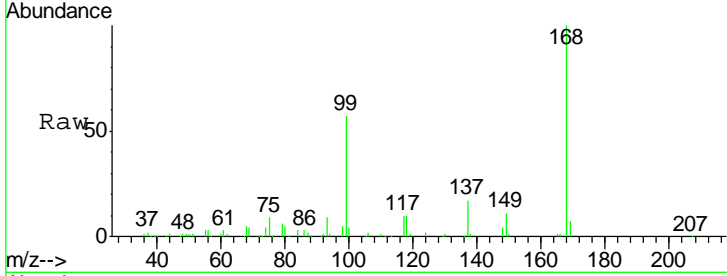




#1  
 Pentafluorobenzene  
 Concen: 50.00 ug/l  
 RT: 7.95 min Scan# 1044  
 Delta R.T. 0.00 min  
 Lab File: VW003585.D  
 Acq: 26 Jun 2018 23:14

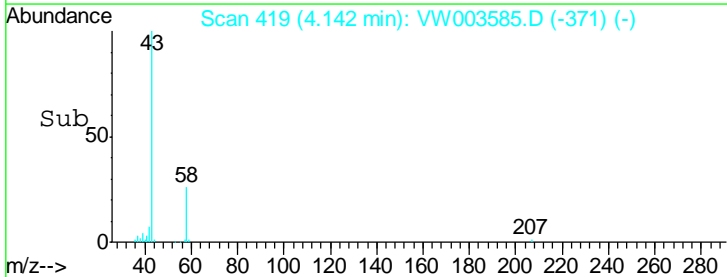
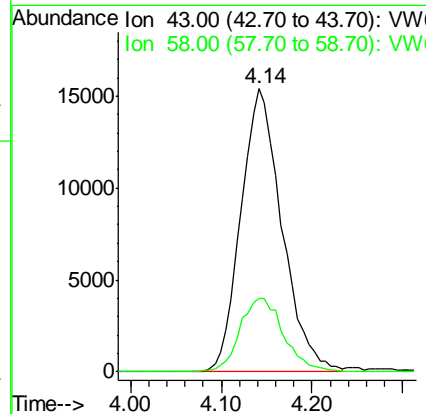
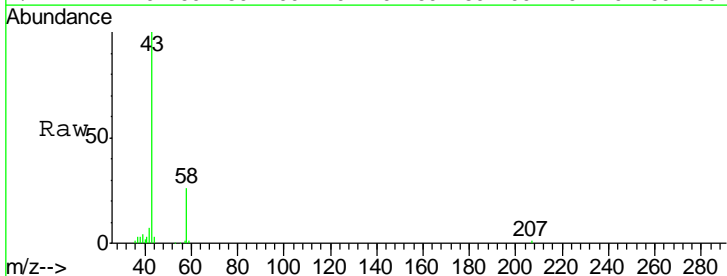
Instrument : MSVOA\_W  
 ClientSampled : TP-1-D

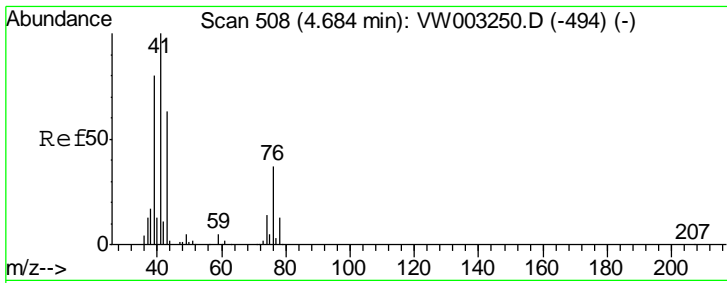
Tgt Ion	Resp	Lower	Upper
168	100		
99	56.7	45.5	68.3



#16  
 Acetone  
 Concen: 290.73 ug/l  
 RT: 4.14 min Scan# 419  
 Delta R.T. -0.01 min  
 Lab File: VW003585.D  
 Acq: 26 Jun 2018 23:14

Tgt Ion	Resp	Lower	Upper
43	100		
58	26.0	22.6	34.0

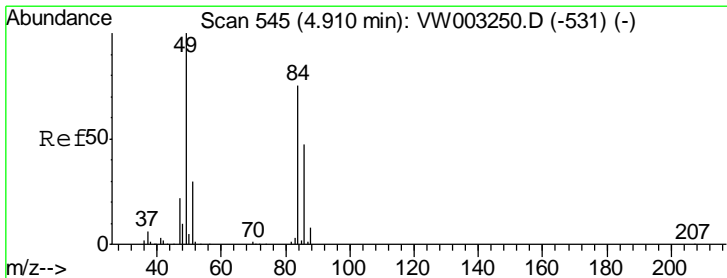
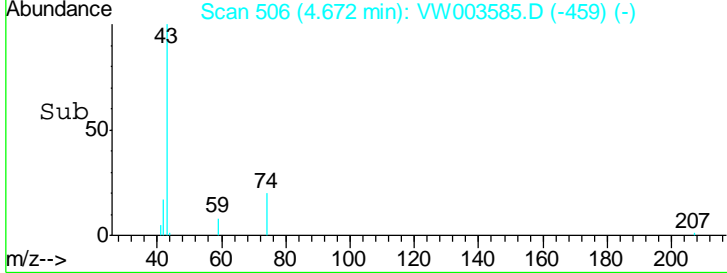
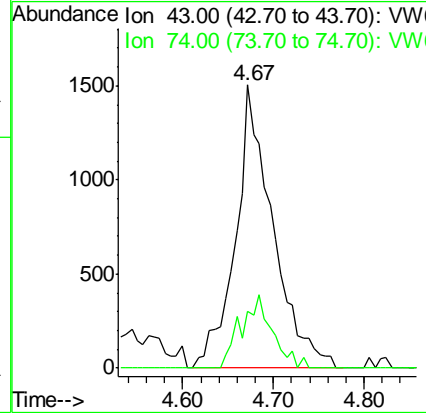
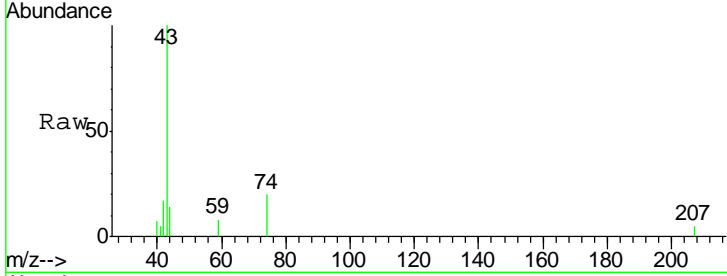




#18  
 Methyl Acetate  
 Concen: 10.89 ug/l  
 RT: 4.67 min Scan# 506  
 Delta R.T. -0.01 min  
 Lab File: VW003585.D  
 Acq: 26 Jun 2018 23:14

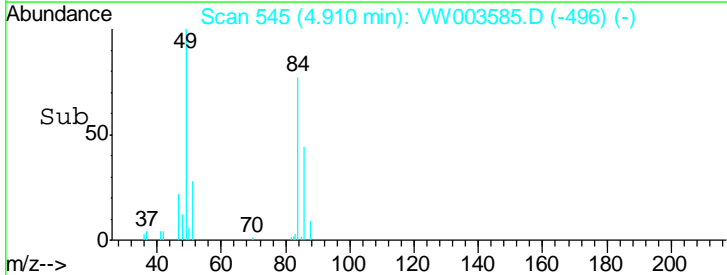
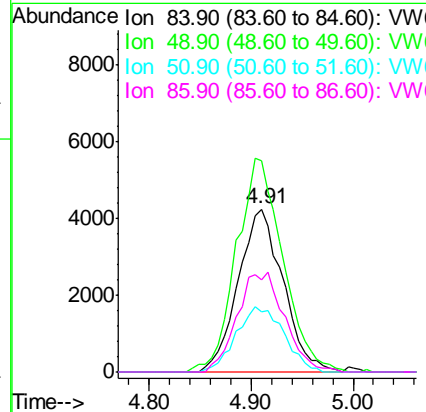
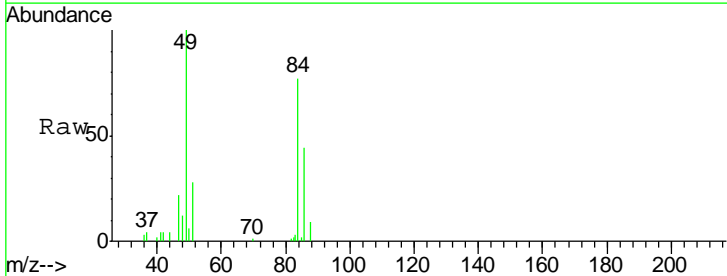
**Instrument :**  
 MSVOA\_W  
**ClientSampled :**  
 TP-1-D

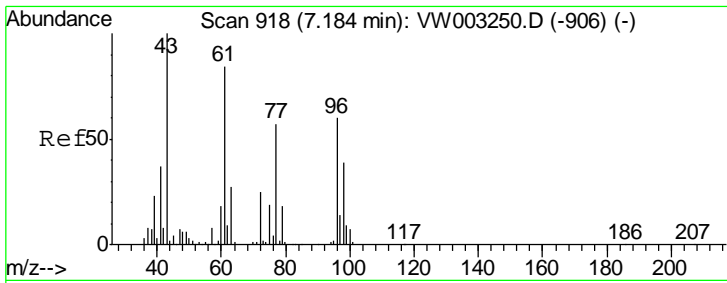
Tgt Ion	Resp	Lower	Upper
43	100		
74	21.7	18.7	28.1



#20  
 Methylene Chloride  
 Concen: 15.77 ug/l  
 RT: 4.91 min Scan# 545  
 Delta R.T. 0.00 min  
 Lab File: VW003585.D  
 Acq: 26 Jun 2018 23:14

Tgt Ion	Resp	Lower	Upper
84	100		
49	127.5	106.3	159.5
51	36.7	32.0	48.0
86	56.7	49.9	74.9

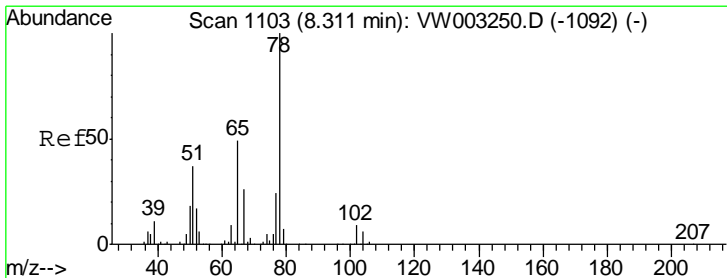
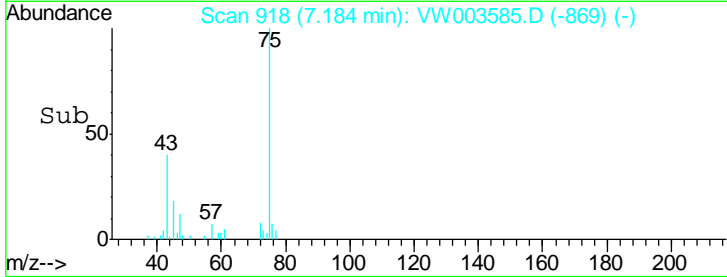
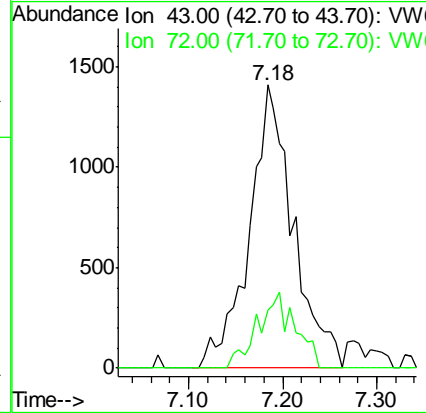
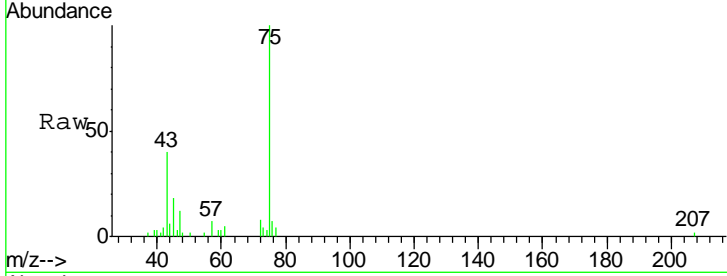




#25  
 2-Butanone  
 Concen: 22.23 ug/l  
 RT: 7.18 min Scan# 918  
 Delta R.T. 0.00 min  
 Lab File: VW003585.D  
 Acq: 26 Jun 2018 23:14

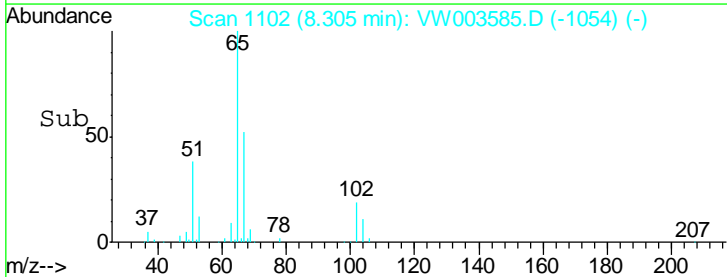
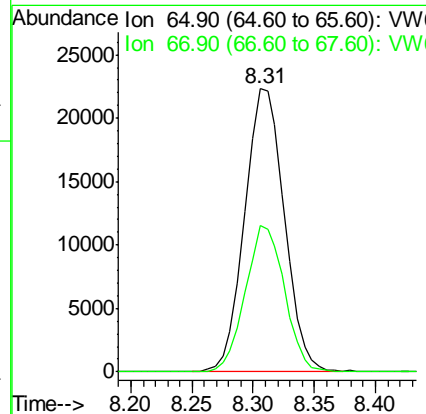
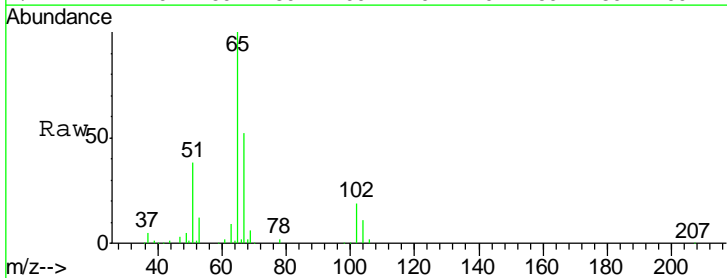
Instrument :  
 MSVOA\_W  
 ClientSampled :  
 TP-1-D

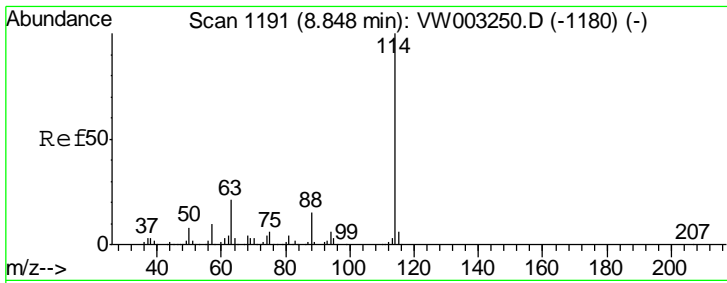
Tgt Ion: 43 Resp: 4593  
 Ion Ratio Lower Upper  
 43 100  
 72 20.6 20.3 30.5



#33  
 1,2-Dichloroethane-d4  
 Concen: 63.48 ug/l  
 RT: 8.31 min Scan# 1102  
 Delta R.T. -0.01 min  
 Lab File: VW003585.D  
 Acq: 26 Jun 2018 23:14

Tgt Ion: 65 Resp: 50293  
 Ion Ratio Lower Upper  
 65 100  
 67 50.9 0.0 104.2

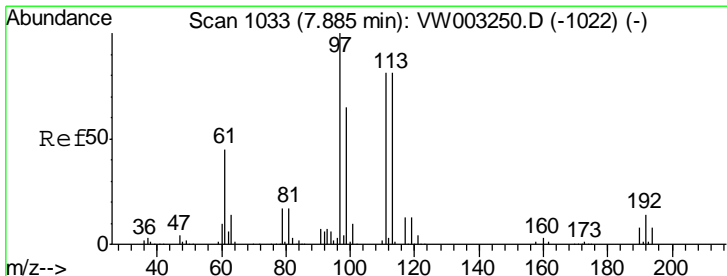
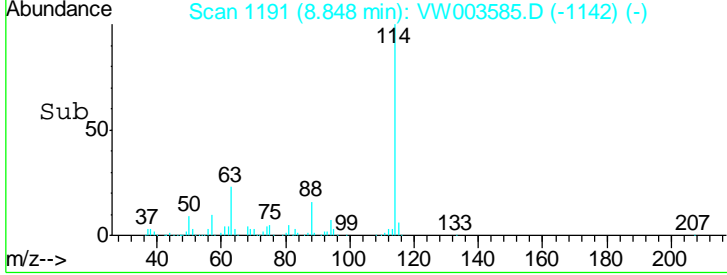
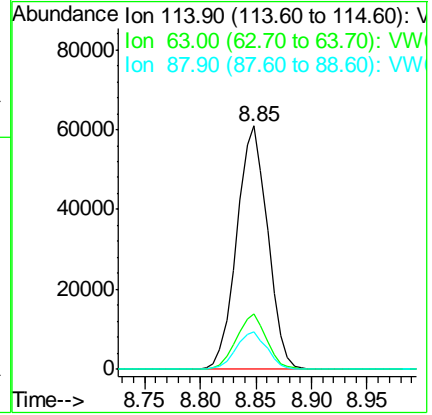
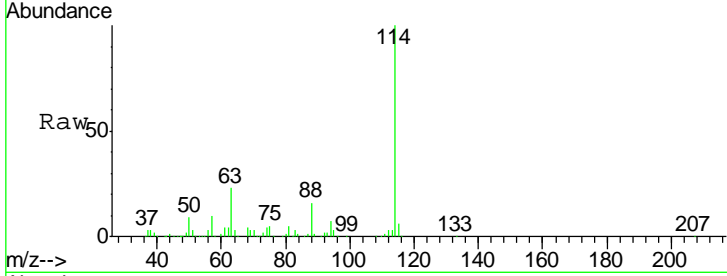




#34  
 1,4-Difluorobenzene  
 Concen: 50.00 ug/l  
 RT: 8.85 min Scan# 1191  
 Delta R.T. 0.00 min  
 Lab File: VW003585.D  
 Acq: 26 Jun 2018 23:14

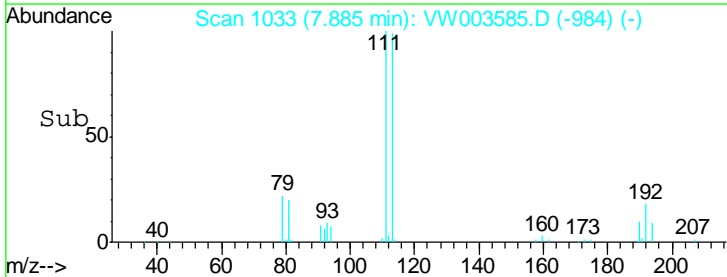
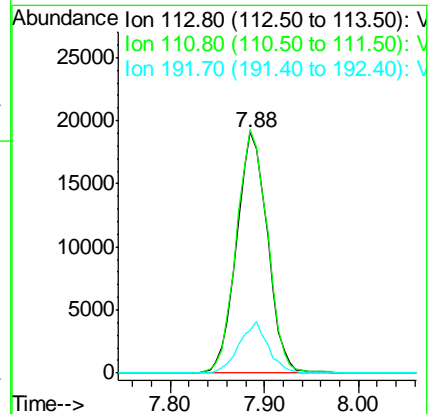
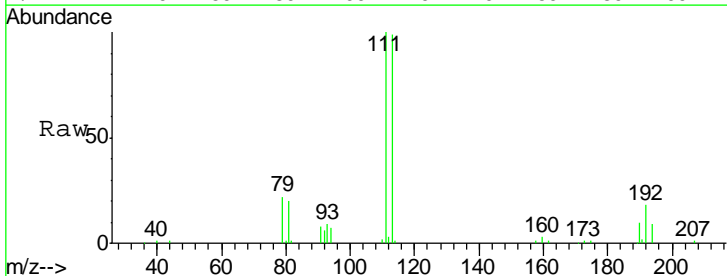
Instrument : MSVOA\_W  
 ClientSampled : TP-1-D

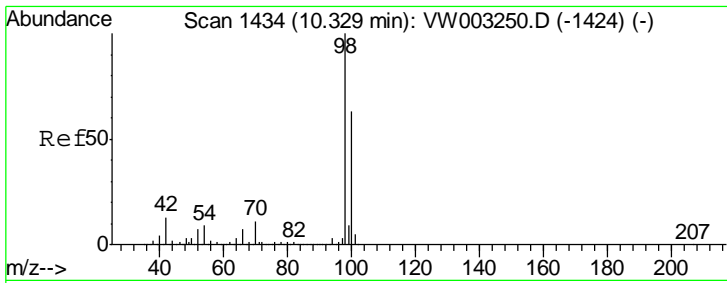
Tgt Ion	Resp	Lower	Upper
114	117129		
63	22.6	0.0	43.0
88	15.6	0.0	29.6



#35  
 Dibromofluoromethane  
 Concen: 60.23 ug/l  
 RT: 7.88 min Scan# 1033  
 Delta R.T. 0.00 min  
 Lab File: VW003585.D  
 Acq: 26 Jun 2018 23:14

Tgt Ion	Resp	Lower	Upper
113	43836		
111	101.5	82.2	123.2
192	19.8	16.2	24.2

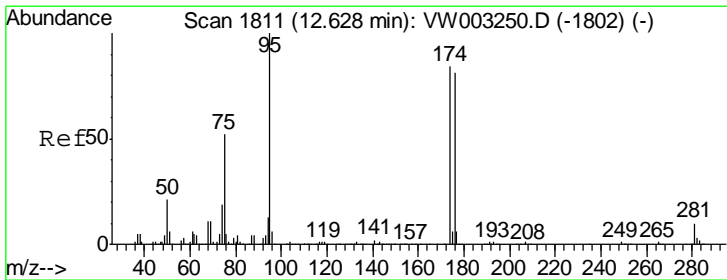
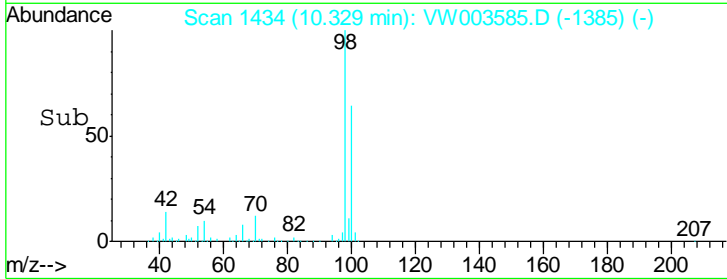
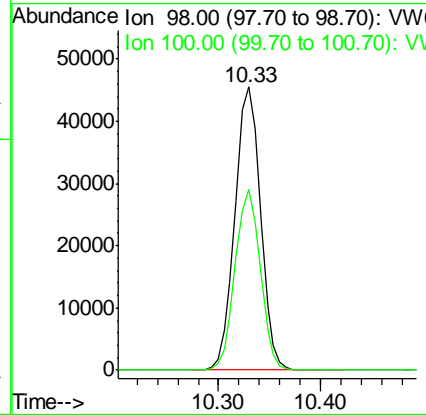
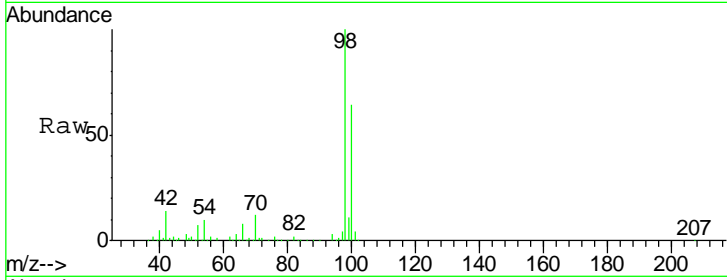




#50  
 Toluene-d8  
 Concen: 27.38 ug/l  
 RT: 10.33 min Scan# 1434  
 Delta R.T. 0.00 min  
 Lab File: VW003585.D  
 Acq: 26 Jun 2018 23:14

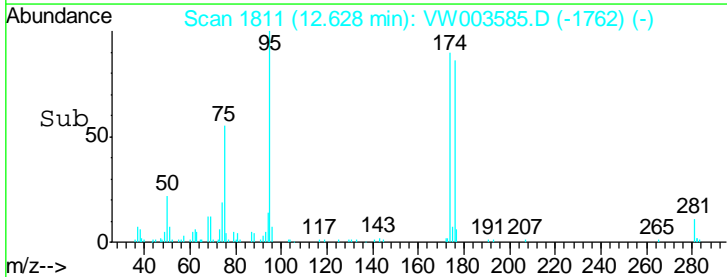
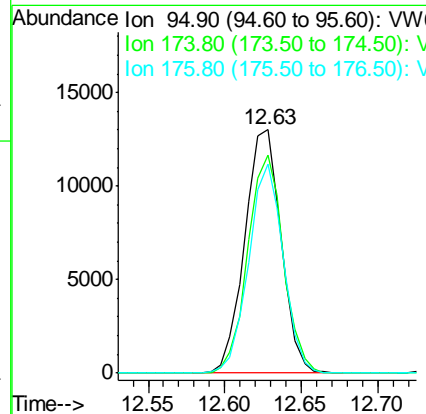
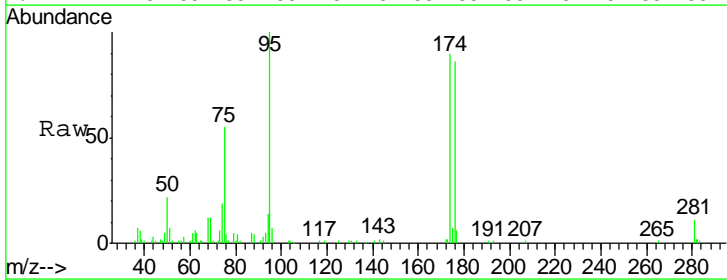
Instrument : MSVOA\_W  
 ClientSampled : TP-1-D

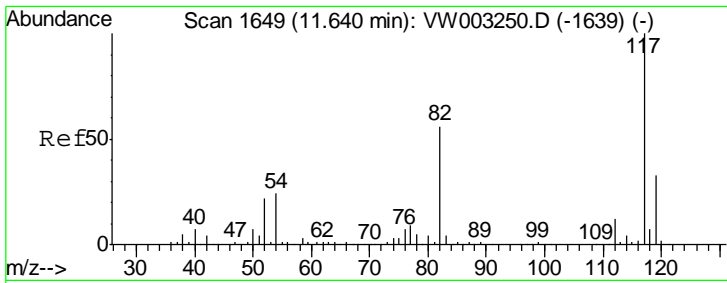
Tgt Ion	Resp	Lower	Upper
98	79005		
100	62.5	50.8	76.2



#62  
 4-Bromofluorobenzene  
 Concen: 20.99 ug/l  
 RT: 12.63 min Scan# 1811  
 Delta R.T. 0.00 min  
 Lab File: VW003585.D  
 Acq: 26 Jun 2018 23:14

Tgt Ion	Resp	Lower	Upper
95	21438		
174	87.6	0.0	166.4
176	81.7	0.0	162.0

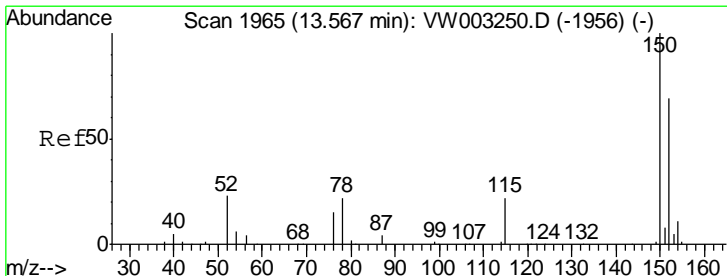
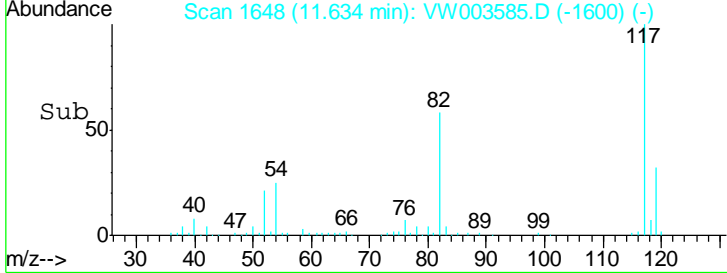
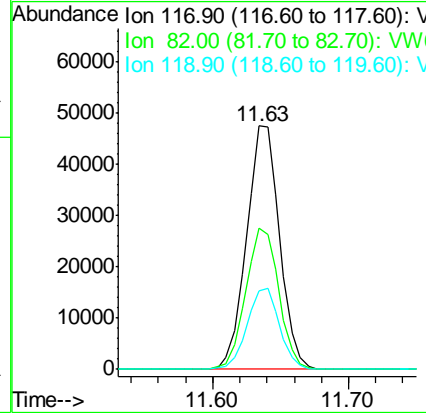
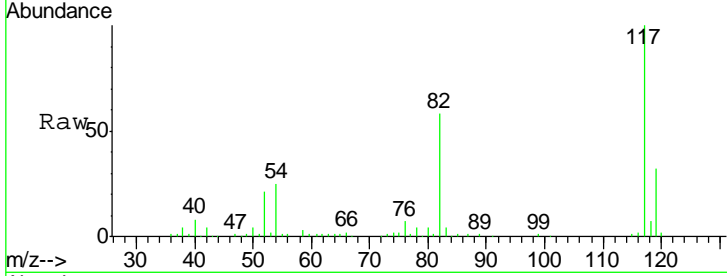




#63  
 Chlorobenzene-d5  
 Concen: 50.00 ug/l  
 RT: 11.63 min Scan# 1648  
 Delta R.T. -0.01 min  
 Lab File: VW003585.D  
 Acq: 26 Jun 2018 23:14

Instrument :  
 MSVOA\_W  
 ClientSampled :  
 TP-1-D

Tgt Ion	Resp	Lower	Upper
117	80647		
82	58.1	44.6	67.0
119	32.3	26.7	40.1



#72  
 1,4-Dichlorobenzene-d4  
 Concen: 50.00 ug/l  
 RT: 13.57 min Scan# 1965  
 Delta R.T. 0.00 min  
 Lab File: VW003585.D  
 Acq: 26 Jun 2018 23:14

Tgt Ion	Resp	Lower	Upper
152	22045		
115	57.9	29.3	88.0
150	158.8	0.0	349.6

