

Data Path : Z:\voasrv\HPCHEM1\MSVOA\_W\Data\VW062823\  
 Data File : VW026409.D  
 Acq On : 28 Jun 2023 21:19  
 Operator : SY/MD  
 Sample : VW0628SBL02  
 Misc : 5.00g/10mL/MSVOA\_W/SOIL  
 ALS Vial : 1 Sample Multiplier: 1

**Instrument :**  
 MSVOA\_W  
**ClientSampleId :**  
 VBLK529

Quant Time: Jun 29 02:32:11 2023  
 Quant Method : Z:\voasrv\HPCHEM1\MSVOA\_W\Method\SFAMWLM062623SMA.M  
 Quant Title : SFAM01.0  
 QLast Update : Thu Jun 29 02:27:38 2023  
 Response via : Initial Calibration

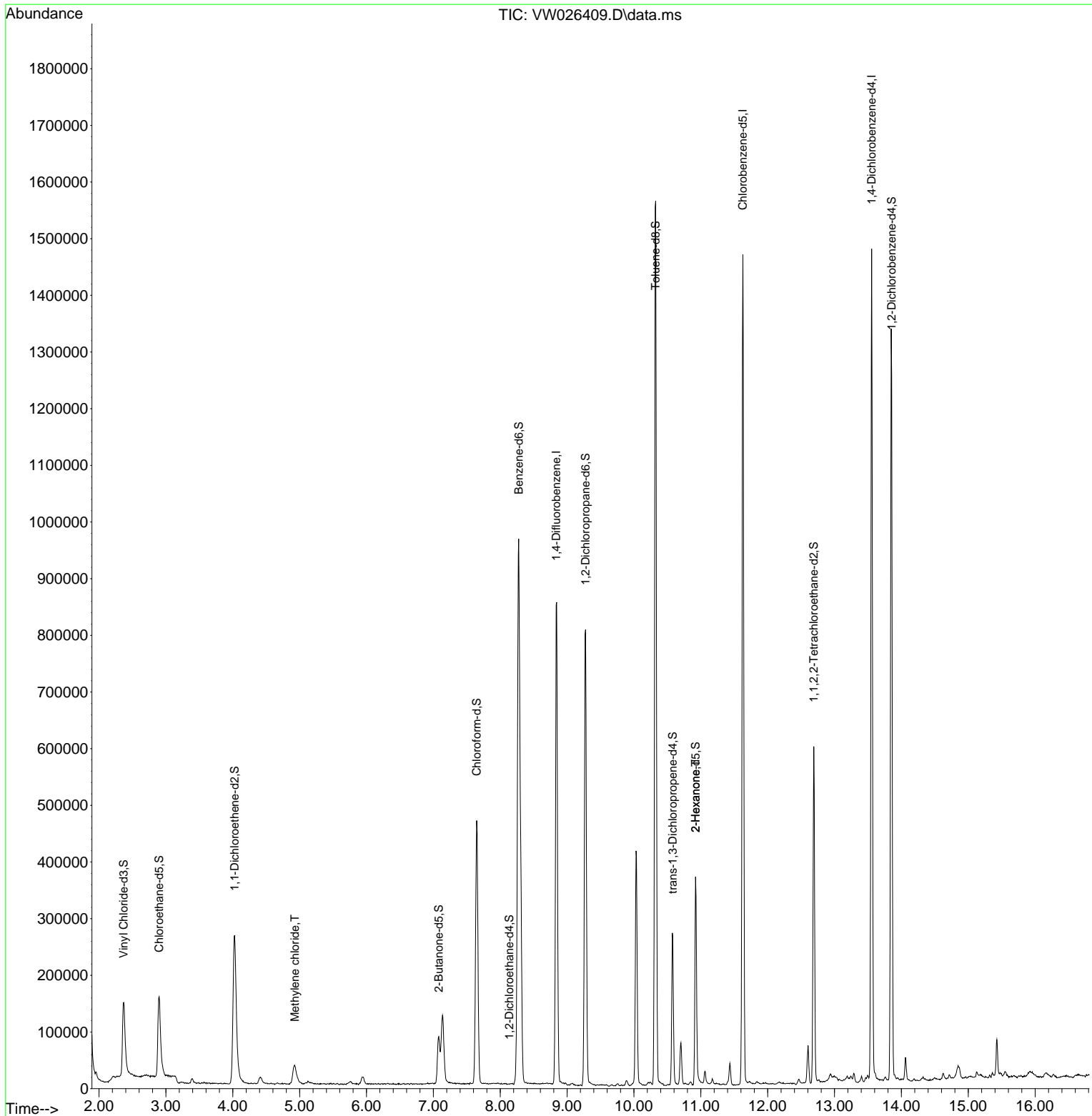
Compound	R.T.	QIon	Response	Conc	Units	Dev(Min)
<b>Internal Standards</b>						
1) 1,4-Difluorobenzene	8.837	114	664814	25.000	ug/L	0.00
28) Chlorobenzene-d5	11.629	117	771822	25.000	ug/L	0.00
58) 1,4-Dichlorobenzene-d4	13.556	152	351742	25.000	ug/L	0.00
<b>System Monitoring Compounds</b>						
4) Vinyl Chloride-d3	2.369	65	239552	24.803	ug/L	0.00
Spiked Amount	25.000	Range 30 - 150	Recovery =	99.200%		
7) Chloroethane-d5	2.899	69	229856	33.478	ug/L	0.00
Spiked Amount	25.000	Range 30 - 150	Recovery =	133.920%		
11) 1,1-Dichloroethene-d2	4.027	65	110267	25.218	ug/L	0.00
Spiked Amount	25.000	Range 45 - 110	Recovery =	100.880%		
21) 2-Butanone-d5	7.081	46	151309	49.848	ug/L	0.00
Spiked Amount	50.000	Range 20 - 135	Recovery =	99.700%		
24) Chloroform-d	7.648	84	454518	24.127	ug/L	0.00
Spiked Amount	25.000	Range 40 - 150	Recovery =	96.520%		
26) 1,2-Dichloroethane-d4	8.136	65	180	0.017	ug/L	-0.16
Spiked Amount	25.000	Range 70 - 130	Recovery =	0.080%#		
32) Benzene-d6	8.276	84	913085	19.113	ug/L	0.00
Spiked Amount	25.000	Range 20 - 135	Recovery =	76.440%		
36) 1,2-Dichloropropane-d6	9.276	67	380677	24.522	ug/L	0.00
Spiked Amount	25.000	Range 70 - 120	Recovery =	98.080%		
41) Toluene-d8	10.325	98	1037838	24.819	ug/L	0.00
Spiked Amount	25.000	Range 30 - 130	Recovery =	99.280%		
43) trans-1,3-Dichloroprop...	10.581	79	146764	23.547	ug/L	0.00
Spiked Amount	25.000	Range 30 - 135	Recovery =	94.200%		
47) 2-Hexanone-d5	10.922	63	126361	53.001	ug/L	0.00
Spiked Amount	50.000	Range 20 - 135	Recovery =	106.000%		
56) 1,1,2,2-Tetrachloroeth...	12.690	84	298556	24.428	ug/L	0.00
Spiked Amount	25.000	Range 45 - 120	Recovery =	97.720%		
66) 1,2-Dichlorobenzene-d4	13.855	152	333374	27.221	ug/L	0.00
Spiked Amount	25.000	Range 75 - 120	Recovery =	108.880%		
<b>Target Compounds</b>						
16) Methylene chloride	4.929	84	29873	2.655	ug/L	95
48) 2-Hexanone	10.922	43	18229	2.748	ug/L #	66

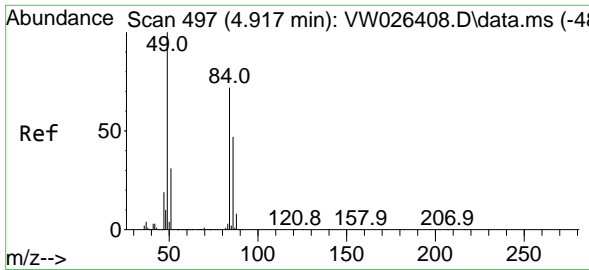
(#) = qualifier out of range (m) = manual integration (+) = signals summed

Data Path : Z:\voasrv\HPCHEM1\MSVOA\_W\Data\VW062823\  
 Data File : VW026409.D  
 Acq On : 28 Jun 2023 21:19  
 Operator : SY/MD  
 Sample : VW0628SBL02  
 Misc : 5.00g/10mL/MSVOA\_W/SOIL  
 ALS Vial : 1 Sample Multiplier: 1

Instrument :  
 MSVOA\_W  
 ClientSampleId :  
 VBLK529

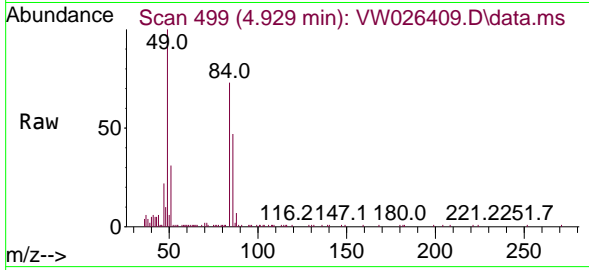
Quant Time: Jun 29 02:32:11 2023  
 Quant Method : Z:\voasrv\HPCHEM1\MSVOA\_W\Method\SFAMWLM062623SMA.M  
 Quant Title : SFAM01.0  
 QLast Update : Thu Jun 29 02:27:38 2023  
 Response via : Initial Calibration





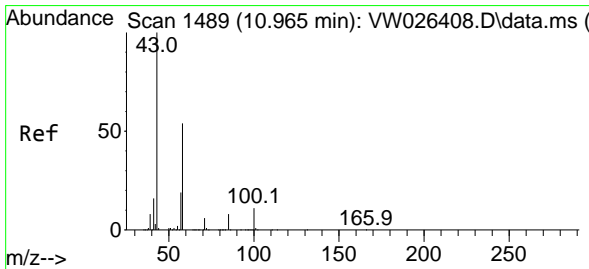
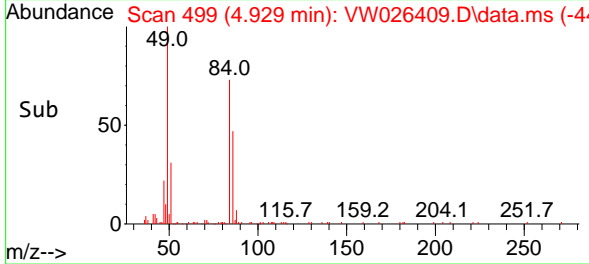
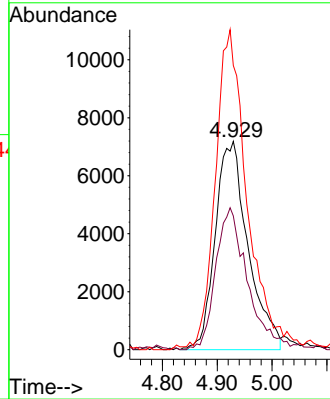
#16  
 Methylene chloride  
 Concen: 2.655 ug/L  
 RT: 4.929 min Scan# 499  
 Delta R.T. 0.012 min  
 Lab File: VW026409.D  
 Acq: 28 Jun 2023 21:19

Instrument : MSVOA\_W  
 Client Sample Id : VBLK529

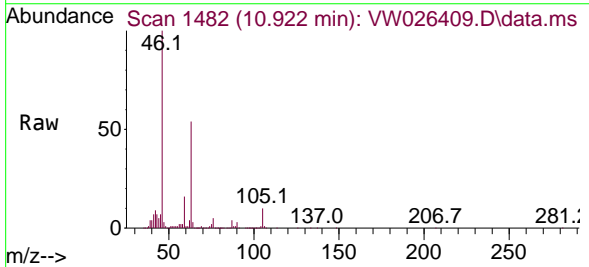


Tgt Ion: 84 Resp: 29873

Ion	Ratio	Lower	Upper
84	100		
86	64.2	43.9	81.5
49	136.4	100.4	186.4



#48  
 2-Hexanone  
 Concen: 2.748 ug/L  
 RT: 10.922 min Scan# 1482  
 Delta R.T. -0.043 min  
 Lab File: VW026409.D  
 Acq: 28 Jun 2023 21:19



Tgt Ion: 43 Resp: 18229

Ion	Ratio	Lower	Upper
43	100		
58	19.6	40.1	60.1#
57	21.1	13.4	20.0#
100	0.9	8.2	12.2#

