

Data Path : Z:\voasrv\HPCHEM1\MSVOA_W\Data\VW062823\
 Data File : VW026402.D
 Acq On : 28 Jun 2023 16:45
 Operator : SY/MD
 Sample : 03421-22MS
 Misc : 4.49g/10mL/MSVOA_W/SOIL
 ALS Vial : 1 Sample Multiplier: 1

Instrument :
 MSVOA_W
 ClientSampleId :
 A46K6MS

Quant Time: Jun 28 23:52:28 2023
 Quant Method : Z:\voasrv\HPCHEM1\MSVOA_W\Method\SFAMWLM062623SMA.M
 Quant Title : SFAM01.0
 QLast Update : Wed Jun 28 23:48:01 2023
 Response via : Initial Calibration

Compound	R.T.	QIon	Response	Conc	Units	Dev(Min)
Internal Standards						
1) 1,4-Difluorobenzene	8.843	114	826350	25.000	ug/L	0.00
28) Chlorobenzene-d5	11.629	117	698140	25.000	ug/L	0.00
58) 1,4-Dichlorobenzene-d4	13.556	152	178608	25.000	ug/L	0.00
System Monitoring Compounds						
4) Vinyl Chloride-d3	2.363	65	309623	25.791	ug/L	0.00
Spiked Amount	25.000	Range 30 - 150	Recovery	=	103.160%	
7) Chloroethane-d5	2.893	69	277257	32.488	ug/L	0.00
Spiked Amount	25.000	Range 30 - 150	Recovery	=	129.960%	
11) 1,1-Dichloroethene-d2	4.021	65	139672	25.698	ug/L	0.00
Spiked Amount	25.000	Range 45 - 110	Recovery	=	102.800%	
21) 2-Butanone-d5	7.075	46	177626	47.079	ug/L	0.00
Spiked Amount	50.000	Range 20 - 135	Recovery	=	94.160%	
24) Chloroform-d	7.648	84	531151	22.683	ug/L	0.00
Spiked Amount	25.000	Range 40 - 150	Recovery	=	90.720%	
26) 1,2-Dichloroethane-d4	8.307	65	321434	24.430	ug/L	0.00
Spiked Amount	25.000	Range 70 - 130	Recovery	=	97.720%	
32) Benzene-d6	8.276	84	1041847	24.109	ug/L	0.00
Spiked Amount	25.000	Range 20 - 135	Recovery	=	96.440%	
36) 1,2-Dichloropropane-d6	9.270	67	325526	23.183	ug/L	0.00
Spiked Amount	25.000	Range 70 - 120	Recovery	=	92.720%	
41) Toluene-d8	10.325	98	821201	21.711	ug/L	0.00
Spiked Amount	25.000	Range 30 - 130	Recovery	=	86.840%	
43) trans-1,3-Dichloroprop...	10.575	79	116048	20.584	ug/L	0.00
Spiked Amount	25.000	Range 30 - 135	Recovery	=	82.320%	
47) 2-Hexanone-d5	10.922	63	118723	55.053	ug/L	0.00
Spiked Amount	50.000	Range 20 - 135	Recovery	=	110.100%	
56) 1,1,2,2-Tetrachloroeth...	12.690	84	252567	22.846	ug/L	0.00
Spiked Amount	25.000	Range 45 - 120	Recovery	=	91.400%	
66) 1,2-Dichlorobenzene-d4	13.849	152	136916	22.016	ug/L	0.00
Spiked Amount	25.000	Range 75 - 120	Recovery	=	88.080%	
Target Compounds						
2) Dichlorodifluoromethane	2.015	85	175531	17.671	ug/L	89
3) Chloromethane	2.229	50	297295	20.698	ug/L	97
5) Vinyl chloride	2.375	62	312072	20.896	ug/L	99
6) Bromomethane	2.783	94	186001	22.691	ug/L	98
8) Chloroethane	2.930	64	217671	27.182	ug/L	99
9) Trichlorofluoromethane	3.265	101	228636	21.705	ug/L	97
10) 1,1,2-Trichloro-1,2,2-...	4.076	101	181288	15.897	ug/L	96
12) 1,1-Dichloroethene	4.045	96	211172	19.764	ug/L	84
13) Acetone	4.119	43	307867	101.946	ug/L	100
14) Carbon disulfide	4.387	76	604146	16.001	ug/L	99
15) Methyl Acetate	4.667	43	133282	19.252	ug/L	100
16) Methylene chloride	4.923	84	238056	17.024	ug/L	99
17) trans-1,2-Dichloroethene	5.429	96	218240	18.583	ug/L	95
18) Methyl tert-butyl Ether	5.423	73	414354	22.559	ug/L	97
19) 1,1-Dichloroethane	6.216	63	476847	19.388	ug/L	99
20) cis-1,2-Dichloroethene	7.167	96	244070	19.231	ug/L	95
22) 2-Butanone	7.167	43	277816	60.125	ug/L	100
23) Bromochloromethane	7.514	128	105004	19.290	ug/L	95
25) Chloroform	7.679	83	445923	19.563	ug/L	99

Data Path : Z:\voasrv\HPCHEM1\MSVOA_W\Data\VW062823\
 Data File : VW026402.D
 Acq On : 28 Jun 2023 16:45
 Operator : SY/MD
 Sample : 03421-22MS
 Misc : 4.49g/10mL/MSVOA_W/SOIL
 ALS Vial : 1 Sample Multiplier: 1

Instrument :
 MSVOA_W
 ClientSampleId :
 A46K6MS

Quant Time: Jun 28 23:52:28 2023
 Quant Method : Z:\voasrv\HPCHEM1\MSVOA_W\Method\SFAMWLM062623SMA.M
 Quant Title : SFAM01.0
 QLast Update : Wed Jun 28 23:48:01 2023
 Response via : Initial Calibration

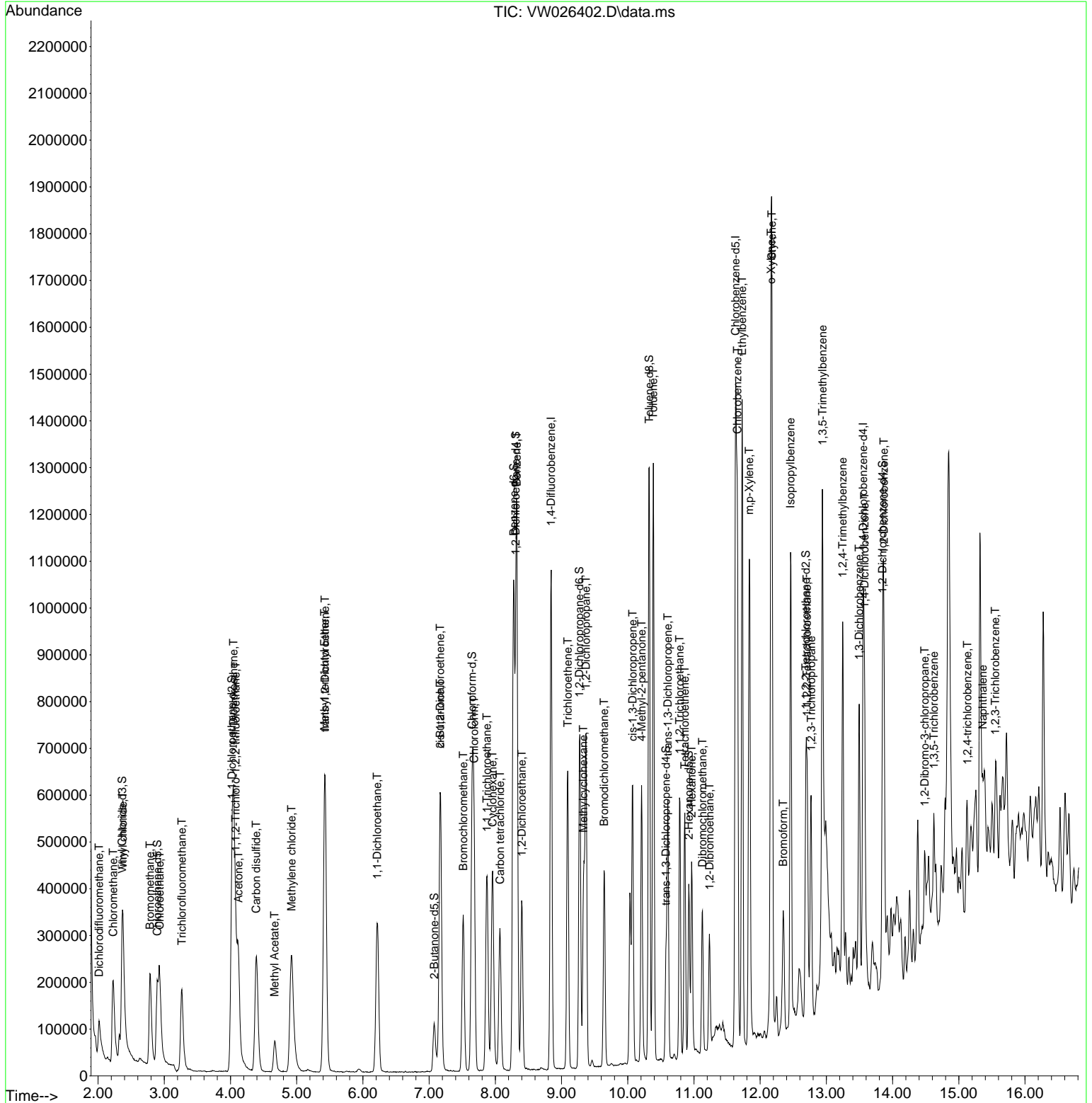
Compound	R.T.	QIon	Response	Conc	Units	Dev(Min)
27) 1,2-Dichloroethane	8.398	62	332334	20.278	ug/L	97
29) Cyclohexane	7.959	56	252551	12.527	ug/L	99
30) 1,1,1-Trichloroethane	7.874	97	345691	20.469	ug/L	99
31) Carbon tetrachloride	8.069	117	227368	14.976	ug/L	97
33) Benzene	8.325	78	951105	20.169	ug/L	100
34) Trichloroethene	9.093	95	222923	18.463	ug/L	97
35) Methylcyclohexane	9.331	83	157834	7.623	ug/L	99
37) 1,2-Dichloropropane	9.368	63	251238	19.069	ug/L	99
38) Bromodichloromethane	9.642	83	277288	18.327	ug/L	100
39) cis-1,3-Dichloropropene	10.075	75	333660	17.676	ug/L	99
40) 4-Methyl-2-pentanone	10.209	43	407367	47.902	ug/L	99
42) Toluene	10.386	91	876357	18.525	ug/L	98
44) trans-1,3-Dichloropropene	10.605	75	278446	17.475	ug/L	96
45) 1,1,2-Trichloroethane	10.782	97	164588	18.657	ug/L	97
46) Tetrachloroethene	10.861	164	107228	12.606	ug/L	95
48) 2-Hexanone	10.965	43	280191	46.694	ug/L	99
49) Dibromochloromethane	11.130	129	151005	16.717	ug/L	98
50) 1,2-Dibromoethane	11.233	107	153513	18.954	ug/L	99
51) Chlorobenzene	11.654	112	552832	18.321	ug/L	99
52) Ethylbenzene	11.727	91	923194	17.319	ug/L	97
53) m,p-Xylene	11.837	106	326354	16.787	ug/L	92
54) o-Xylene	12.166	106	317728	17.358	ug/L	91
55) Styrene	12.178	104	521592	16.338	ug/L	98
57) 1,1,2,2-Tetrachloroethane	12.709	83	207032	18.775	ug/L	99
59) Bromoform	12.349	173	87230	32.284	ug/L	98
60) Isopropylbenzene	12.459	105	642810	23.946	ug/L	99
61) 1,2,3-Trichloropropane	12.769	75	173392	39.937	ug/L	100
62) 1,3,5-Trimethylbenzene	12.940	105	432729	20.795	ug/L	100
63) 1,2,4-Trimethylbenzene	13.245	105	421095	20.981	ug/L	100
64) 1,3-Dichlorobenzene	13.495	146	198680	17.280	ug/L	92
65) 1,4-Dichlorobenzene	13.574	146	209341	18.193	ug/L	96
67) 1,2-Dichlorobenzene	13.867	146	185791	18.143	ug/L	89
68) 1,2-Dibromo-3-chloropr...	14.483	75	29419	29.399	ug/L	94
69) 1,3,5-Trichlorobenzene	14.623	180	62617	8.475	ug/L	98
70) 1,2,4-trichlorobenzene	15.129	180	51230	8.473	ug/L #	87
71) Naphthalene	15.360	128	189872	15.622	ug/L #	93
72) 1,2,3-Trichlorobenzene	15.549	180	42262	7.487	ug/L #	88

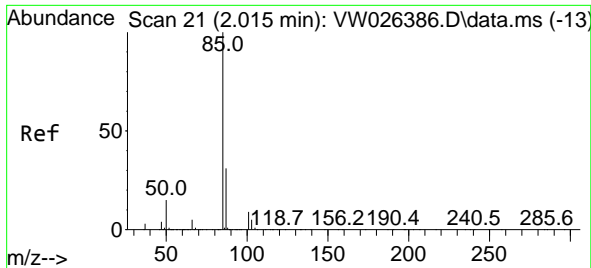
(#) = qualifier out of range (m) = manual integration (+) = signals summed

Data Path : Z:\voasrv\HPCHEM1\MSVOA_W\Data\VW062823\
 Data File : VW026402.D
 Acq On : 28 Jun 2023 16:45
 Operator : SY/MD
 Sample : 03421-22MS
 Misc : 4.49g/10mL/MSVOA_W/SOIL
 ALS Vial : 1 Sample Multiplier: 1

Instrument :
 MSVOA_W
 ClientSampleId :
 A46K6MS

Quant Time: Jun 28 23:52:28 2023
 Quant Method : Z:\voasrv\HPCHEM1\MSVOA_W\Method\SFAMWLM062623SMA.M
 Quant Title : SFAM01.0
 QLast Update : Wed Jun 28 23:48:01 2023
 Response via : Initial Calibration

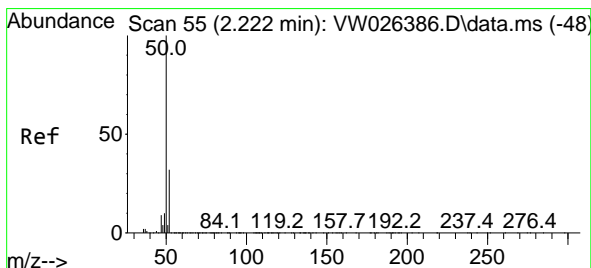
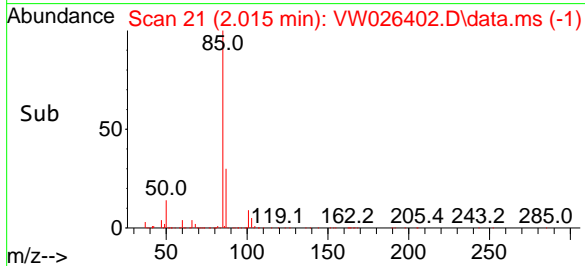
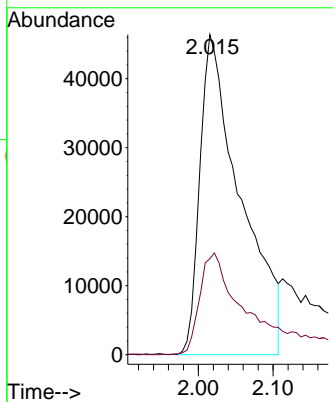
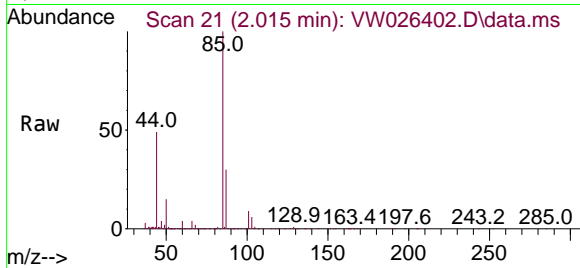




#2
 Dichlorodifluoromethane
 Concen: 17.671 ug/L
 RT: 2.015 min Scan# 21
 Delta R.T. 0.000 min
 Lab File: VW026402.D
 Acq: 28 Jun 2023 16:45

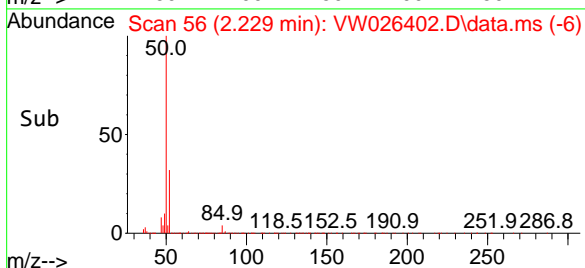
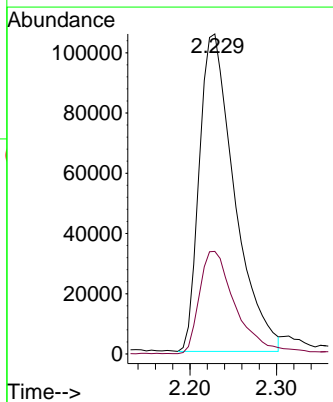
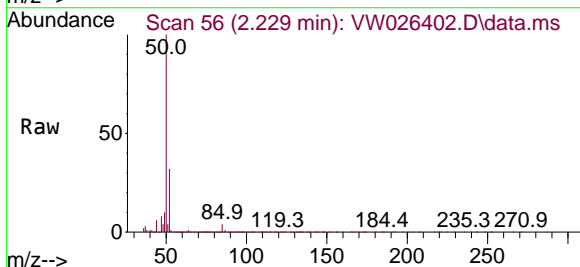
Instrument :
 MSVOA_W
 ClientSampleId :
 A46K6MS

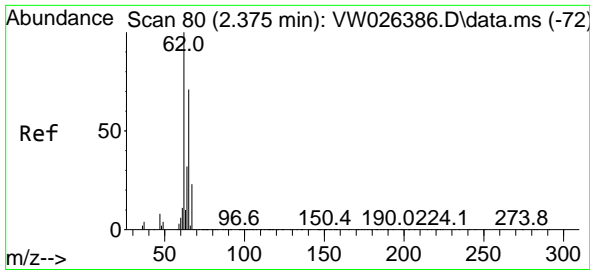
Tgt Ion: 85 Resp: 175531
 Ion Ratio Lower Upper
 85 100
 87 25.5 25.2 37.8



#3
 Chloromethane
 Concen: 20.698 ug/L
 RT: 2.229 min Scan# 56
 Delta R.T. 0.007 min
 Lab File: VW026402.D
 Acq: 28 Jun 2023 16:45

Tgt Ion: 50 Resp: 297295
 Ion Ratio Lower Upper
 50 100
 52 32.1 21.4 39.8

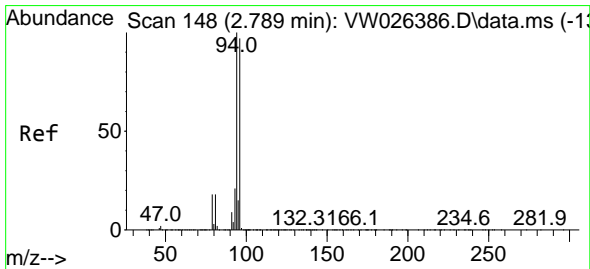
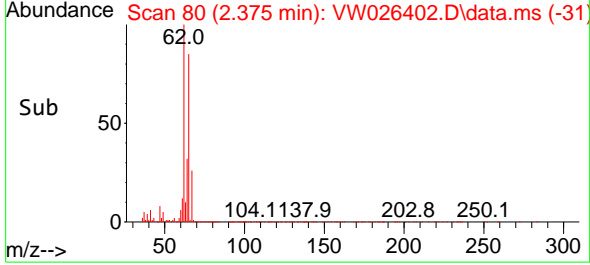
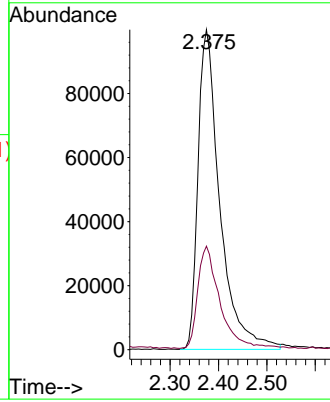
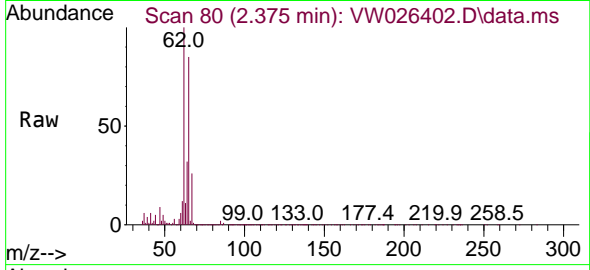




#5
 Vinyl chloride
 Concen: 20.896 ug/L
 RT: 2.375 min Scan# 80
 Delta R.T. 0.000 min
 Lab File: VW026402.D
 Acq: 28 Jun 2023 16:45

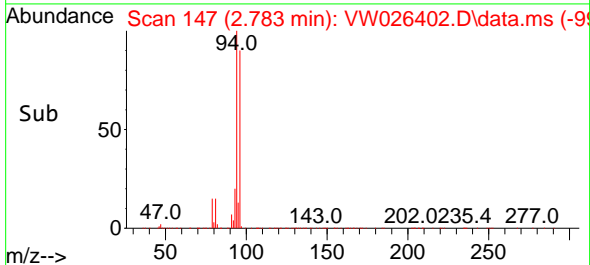
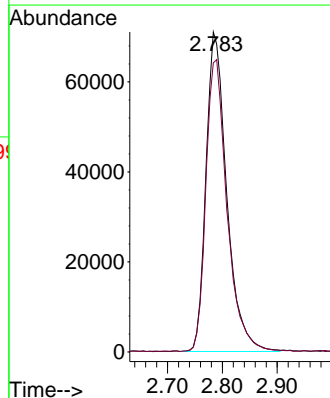
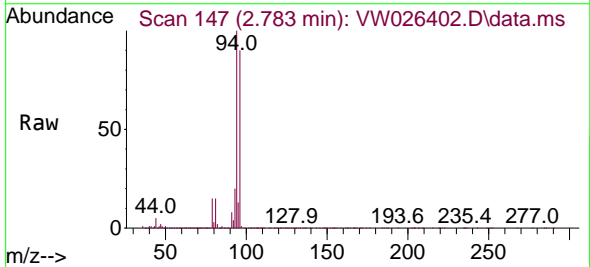
Instrument :
 MSVOA_W
 ClientSampleId :
 A46K6MS

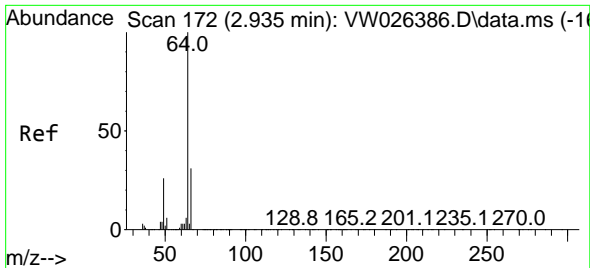
Tgt Ion: 62 Resp: 312072
 Ion Ratio Lower Upper
 62 100
 64 32.4 23.0 42.8



#6
 Bromomethane
 Concen: 22.691 ug/L
 RT: 2.783 min Scan# 147
 Delta R.T. -0.006 min
 Lab File: VW026402.D
 Acq: 28 Jun 2023 16:45

Tgt Ion: 94 Resp: 186001
 Ion Ratio Lower Upper
 94 100
 96 90.3 64.6 120.0

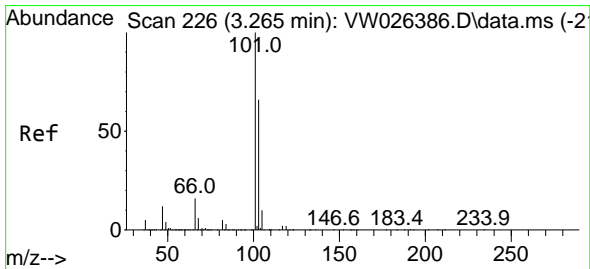
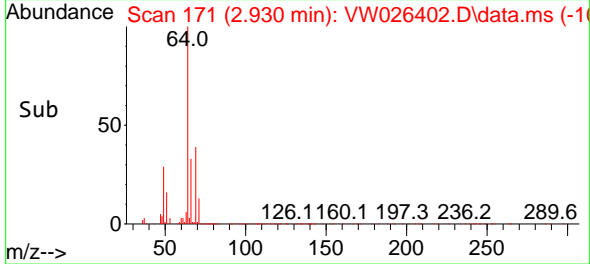
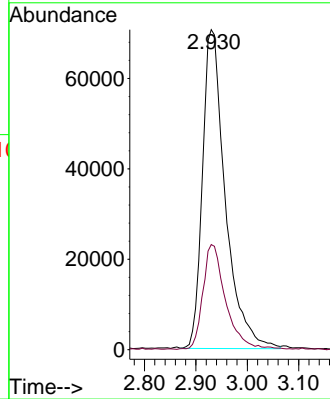
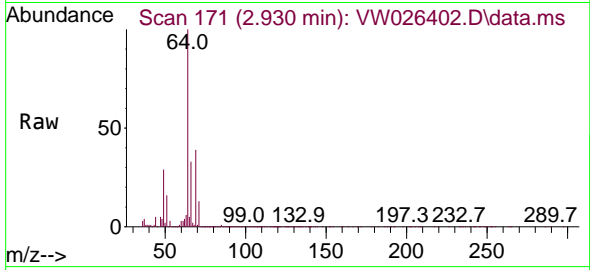




#8
 Chloroethane
 Concen: 27.182 ug/L
 RT: 2.930 min Scan# 171
 Delta R.T. -0.006 min
 Lab File: VW026402.D
 Acq: 28 Jun 2023 16:45

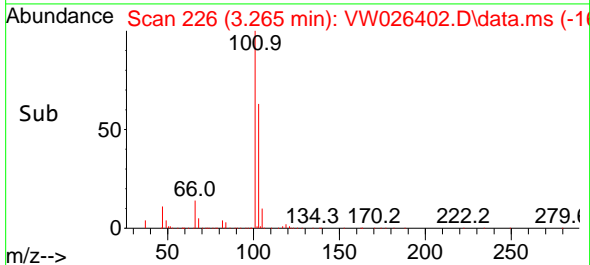
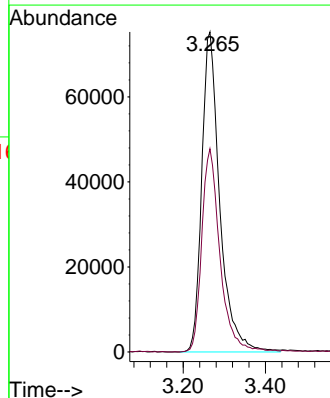
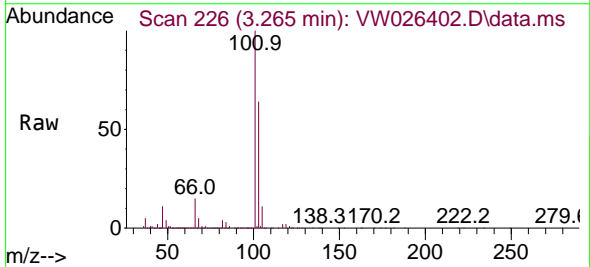
Instrument : MSVOA_W
 ClientSampleId : A46K6MS

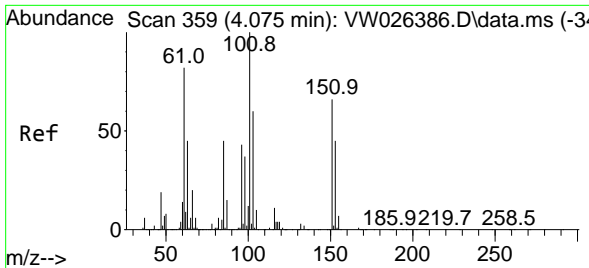
Tgt Ion: 64 Resp: 217671
 Ion Ratio Lower Upper
 64 100
 66 32.8 22.5 41.7



#9
 Trichlorofluoromethane
 Concen: 21.705 ug/L
 RT: 3.265 min Scan# 226
 Delta R.T. 0.000 min
 Lab File: VW026402.D
 Acq: 28 Jun 2023 16:45

Tgt Ion: 101 Resp: 228636
 Ion Ratio Lower Upper
 101 100
 103 63.4 52.9 79.3



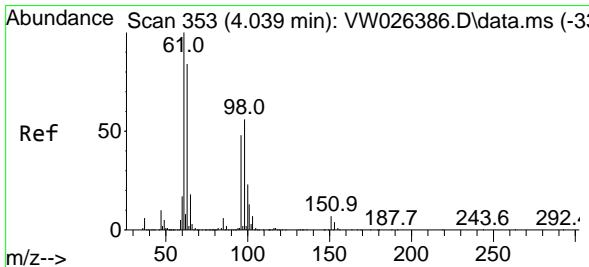
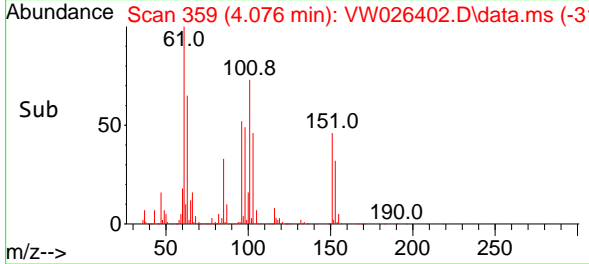
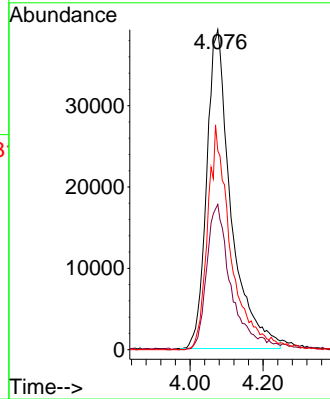
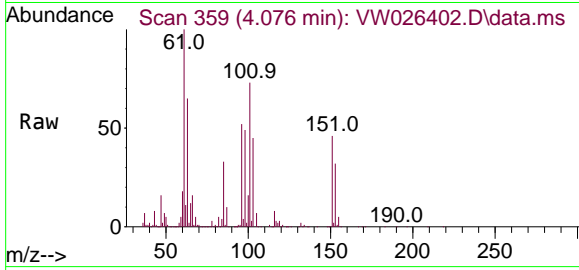


#10
 1,1,2-Trichloro-1,2,2-trifluoroethane
 Concen: 15.897 ug/L
 RT: 4.076 min Scan# 311
 Delta R.T. 0.000 min
 Lab File: VW026402.D
 Acq: 28 Jun 2023 16:45

Instrument :
 MSVOA_W
 ClientSampleId :
 A46K6MS

Tgt Ion:101 Resp: 181288

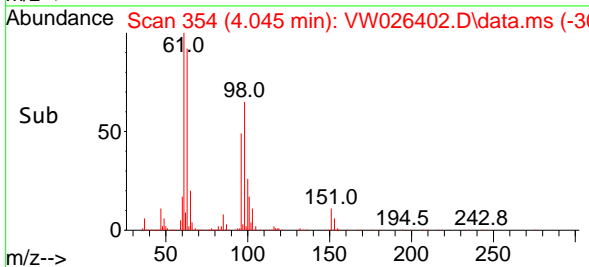
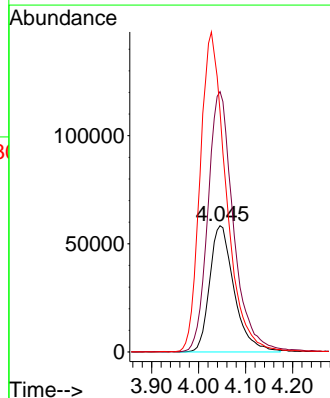
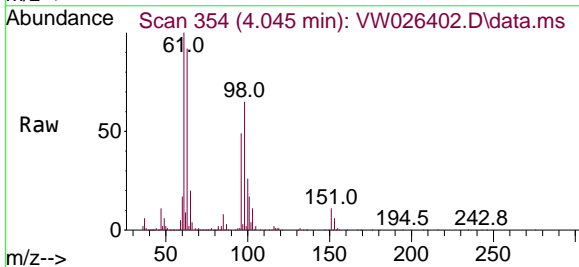
Ion	Ratio	Lower	Upper
101	100		
85	43.8	35.4	53.0
151	64.6	56.1	84.1

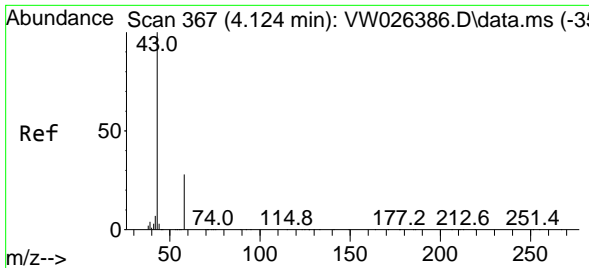


#12
 1,1-Dichloroethene
 Concen: 19.764 ug/L
 RT: 4.045 min Scan# 354
 Delta R.T. 0.007 min
 Lab File: VW026402.D
 Acq: 28 Jun 2023 16:45

Tgt Ion: 96 Resp: 211172

Ion	Ratio	Lower	Upper
96	100		
61	206.1	134.3	249.3
63	190.3	112.3	208.5

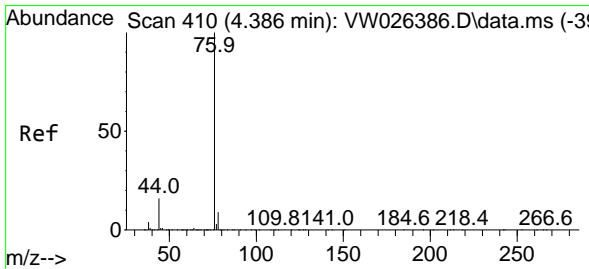
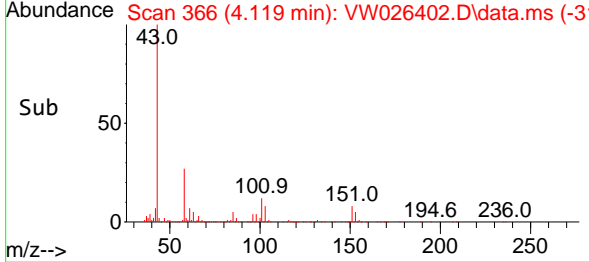
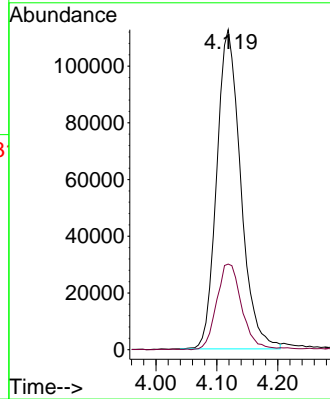
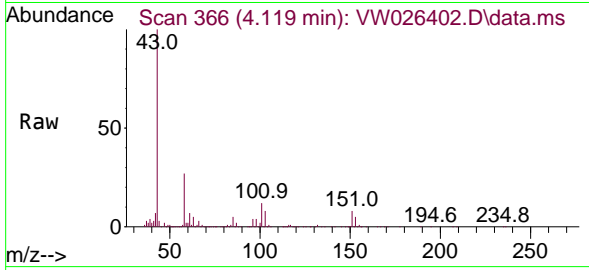




#13
 Acetone
 Concen: 101.946 ug/L
 RT: 4.119 min Scan# 30
 Delta R.T. -0.006 min
 Lab File: VW026402.D
 Acq: 28 Jun 2023 16:45

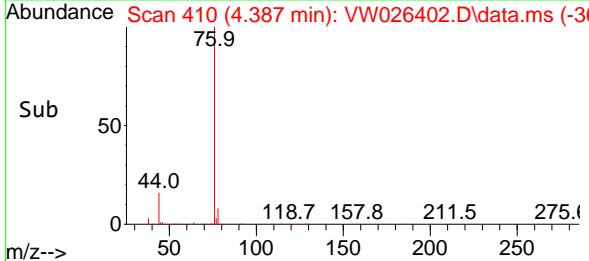
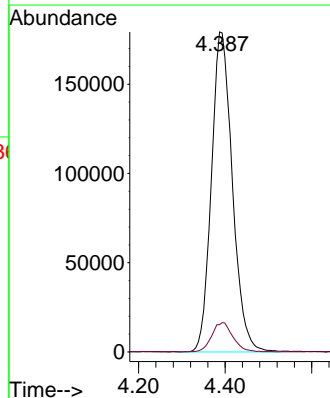
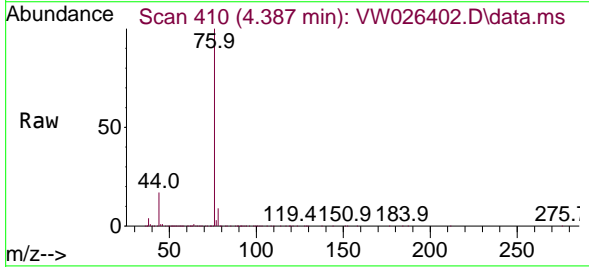
Instrument :
 MSVOA_W
 ClientSampleId :
 A46K6MS

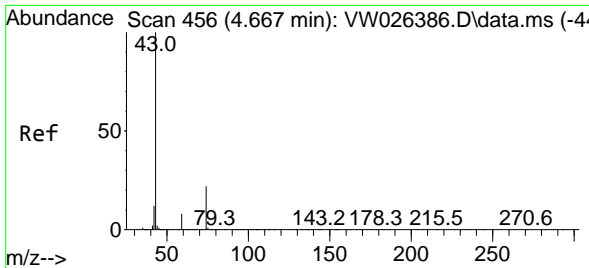
Tgt Ion: 43 Resp: 307867
 Ion Ratio Lower Upper
 43 100
 58 27.9 0.0 55.8



#14
 Carbon disulfide
 Concen: 16.001 ug/L
 RT: 4.387 min Scan# 410
 Delta R.T. 0.000 min
 Lab File: VW026402.D
 Acq: 28 Jun 2023 16:45

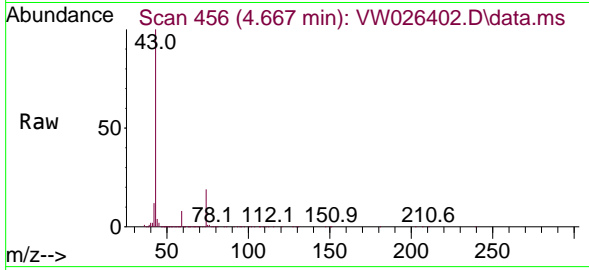
Tgt Ion: 76 Resp: 604146
 Ion Ratio Lower Upper
 76 100
 78 8.5 7.2 10.8



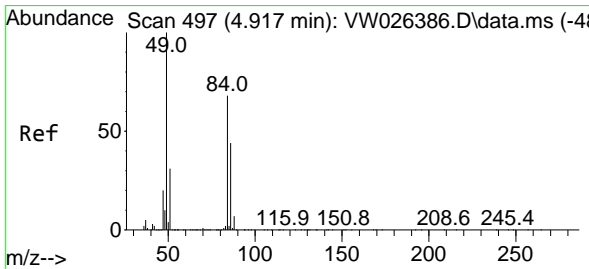
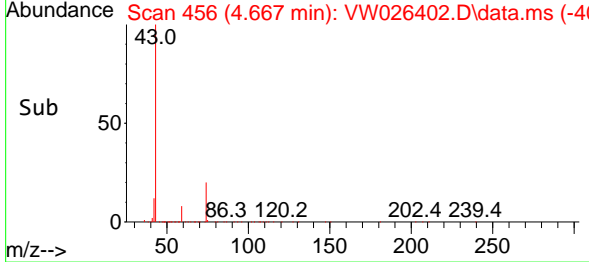
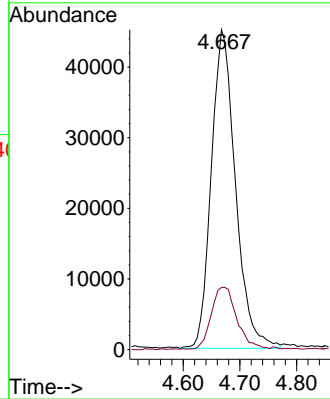


#15
 Methyl Acetate
 Concen: 19.252 ug/L
 RT: 4.667 min Scan# 41
 Delta R.T. 0.000 min
 Lab File: VW026402.D
 Acq: 28 Jun 2023 16:45

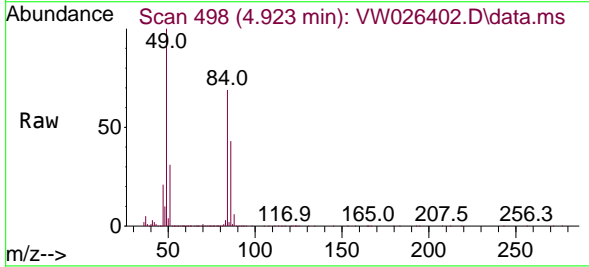
Instrument :
 MSVOA_W
 ClientSampleId :
 A46K6MS



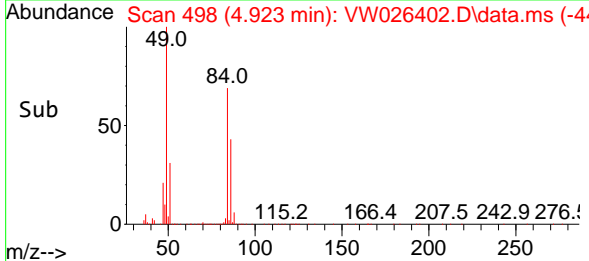
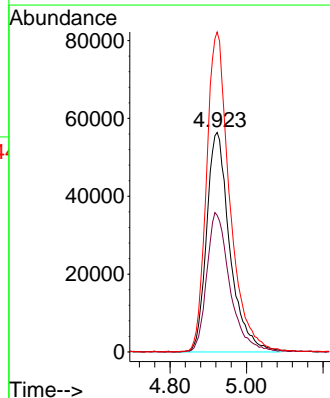
Tgt Ion: 43 Resp: 133282
 Ion Ratio Lower Upper
 43 100
 74 20.5 16.3 24.5

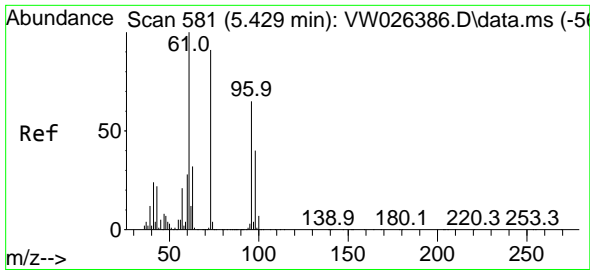


#16
 Methylene chloride
 Concen: 17.024 ug/L
 RT: 4.923 min Scan# 498
 Delta R.T. 0.007 min
 Lab File: VW026402.D
 Acq: 28 Jun 2023 16:45



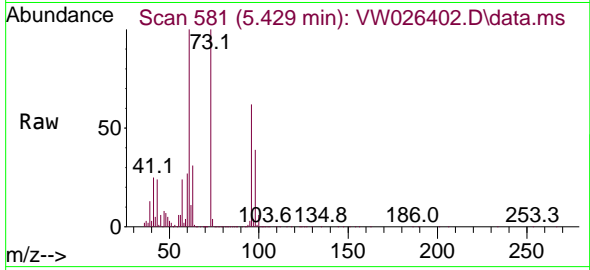
Tgt Ion: 84 Resp: 238056
 Ion Ratio Lower Upper
 84 100
 86 62.3 43.9 81.5
 49 145.7 100.4 186.4



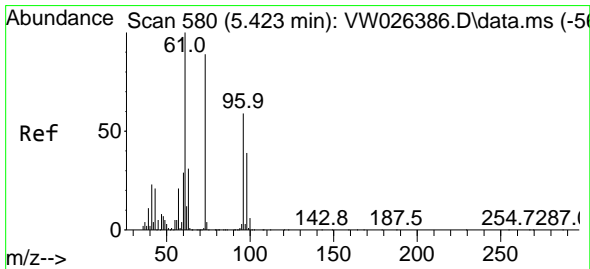
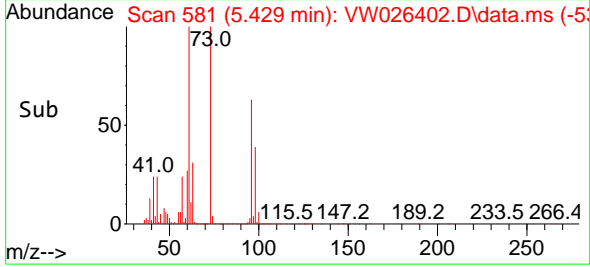
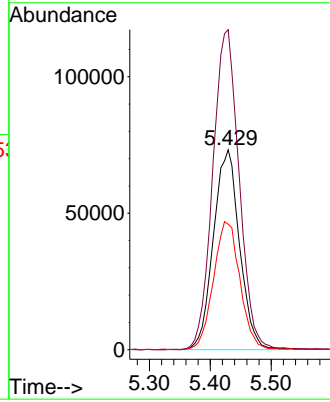


#17
 trans-1,2-Dichloroethene
 Concen: 18.583 ug/L
 RT: 5.429 min Scan# 581
 Delta R.T. 0.000 min
 Lab File: VW026402.D
 Acq: 28 Jun 2023 16:45

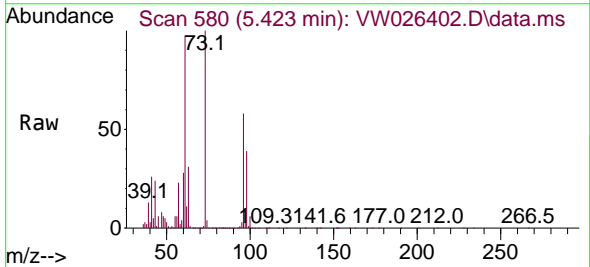
Instrument : MSVOA_W
 ClientSampleId : A46K6MS



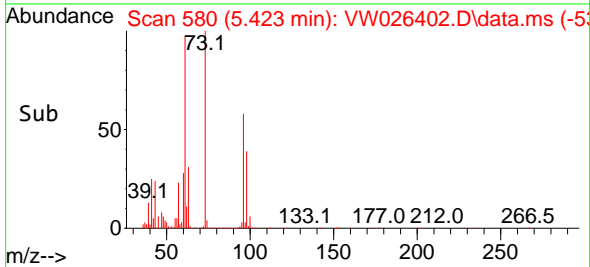
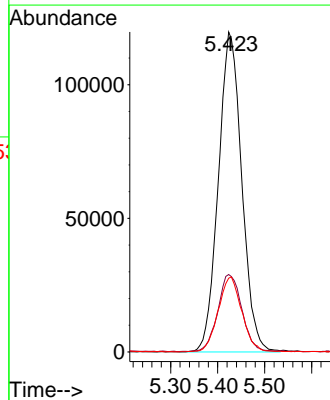
Tgt Ion: 96 Resp: 218240
 Ion Ratio Lower Upper
 96 100
 61 160.1 106.1 197.1
 98 62.8 43.9 81.5

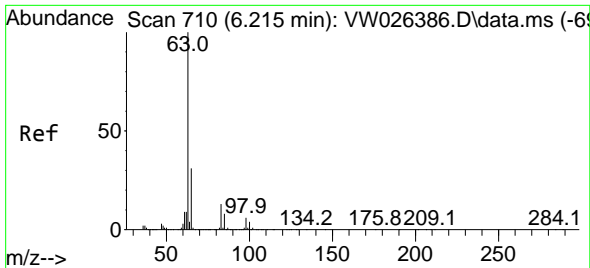


#18
 Methyl tert-butyl Ether
 Concen: 22.559 ug/L
 RT: 5.423 min Scan# 580
 Delta R.T. 0.000 min
 Lab File: VW026402.D
 Acq: 28 Jun 2023 16:45



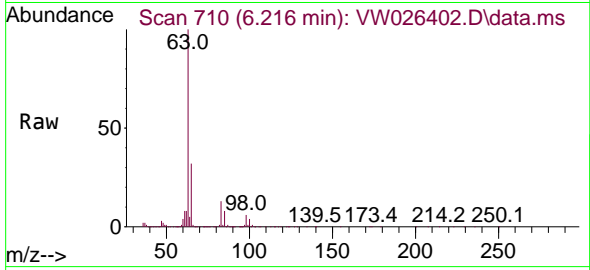
Tgt Ion: 73 Resp: 414354
 Ion Ratio Lower Upper
 73 100
 43 24.6 18.1 27.1
 57 23.6 19.5 29.3





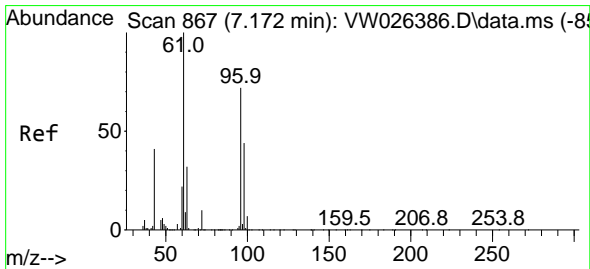
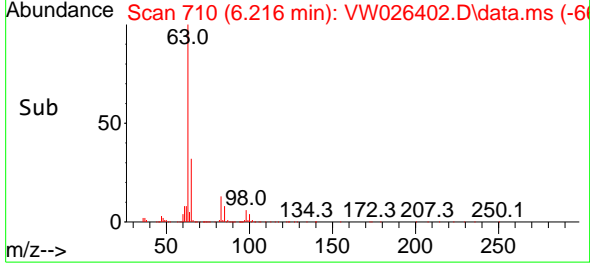
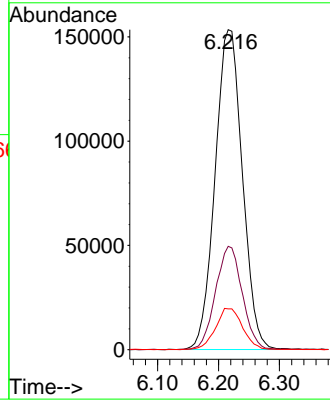
#19
 1,1-Dichloroethane
 Concen: 19.388 ug/L
 RT: 6.216 min Scan# 710
 Delta R.T. 0.000 min
 Lab File: VW026402.D
 Acq: 28 Jun 2023 16:45

Instrument : MSVOA_W
 ClientSampleId : A46K6MS



Tgt Ion: 63 Resp: 476847

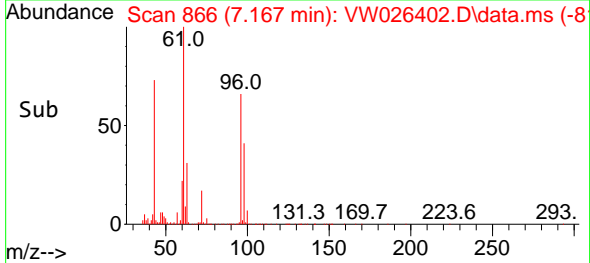
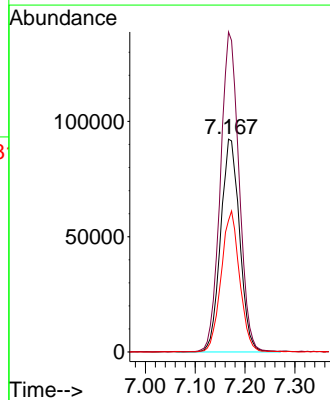
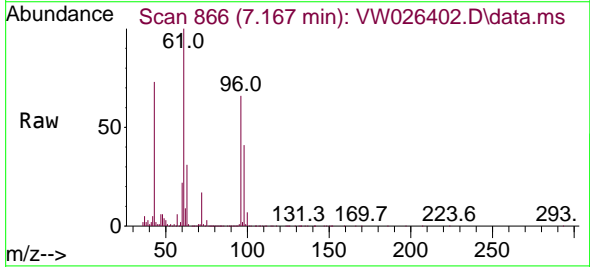
Ion	Ratio	Lower	Upper
63	100		
65	32.3	22.8	42.4
83	12.8	8.7	16.1

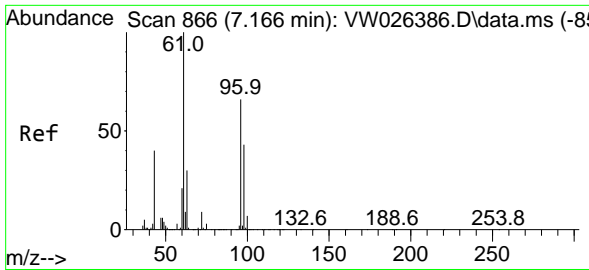


#20
 cis-1,2-Dichloroethene
 Concen: 19.231 ug/L
 RT: 7.167 min Scan# 866
 Delta R.T. -0.006 min
 Lab File: VW026402.D
 Acq: 28 Jun 2023 16:45

Tgt Ion: 96 Resp: 244070

Ion	Ratio	Lower	Upper
96	100		
61	150.4	100.8	187.2
98	61.8	45.7	84.9

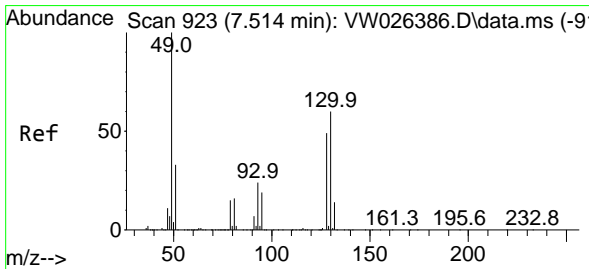
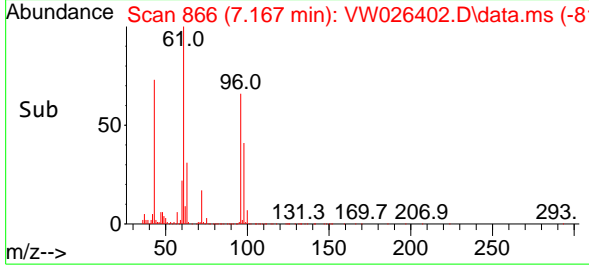
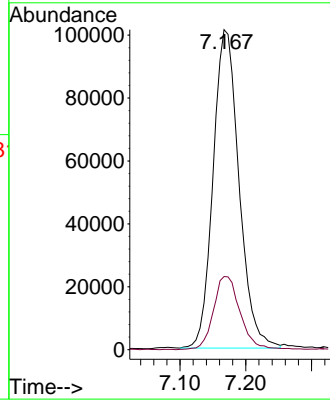
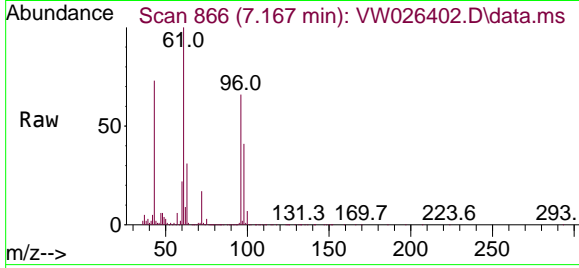




#22
 2-Butanone
 Concen: 60.125 ug/L
 RT: 7.167 min Scan# 866
 Delta R.T. 0.000 min
 Lab File: VW026402.D
 Acq: 28 Jun 2023 16:45

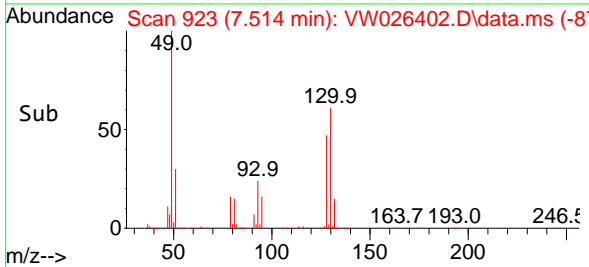
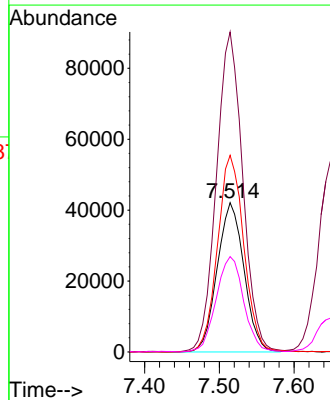
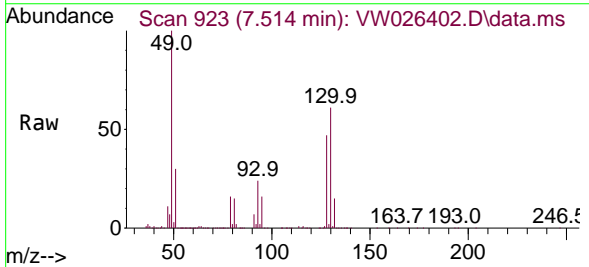
Instrument :
 MSVOA_W
 ClientSampleId :
 A46K6MS

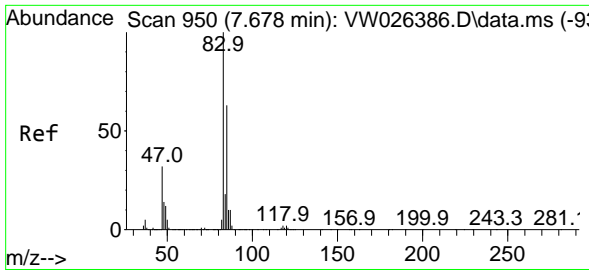
Tgt Ion: 43 Resp: 277816
 Ion Ratio Lower Upper
 43 100
 72 23.6 11.8 35.3



#23
 Bromochloromethane
 Concen: 19.290 ug/L
 RT: 7.514 min Scan# 923
 Delta R.T. 0.000 min
 Lab File: VW026402.D
 Acq: 28 Jun 2023 16:45

Tgt Ion:128 Resp: 105004
 Ion Ratio Lower Upper
 128 100
 49 214.5 148.5 275.9
 130 131.8 82.6 153.4
 51 63.9 54.2 81.4

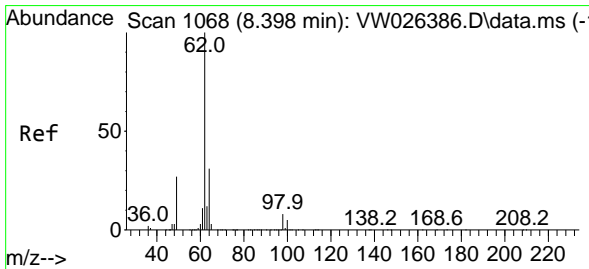
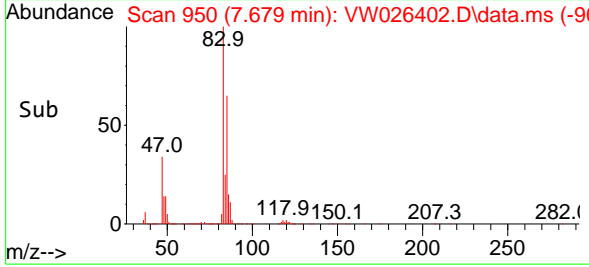
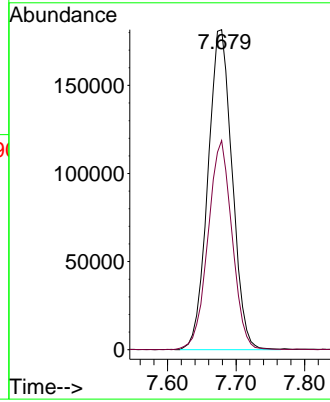
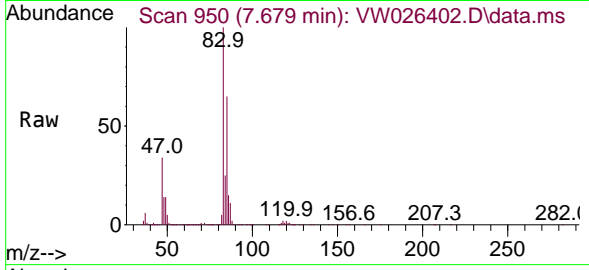




#25
 Chloroform
 Concen: 19.563 ug/L
 RT: 7.679 min Scan# 91
 Delta R.T. 0.000 min
 Lab File: VW026402.D
 Acq: 28 Jun 2023 16:45

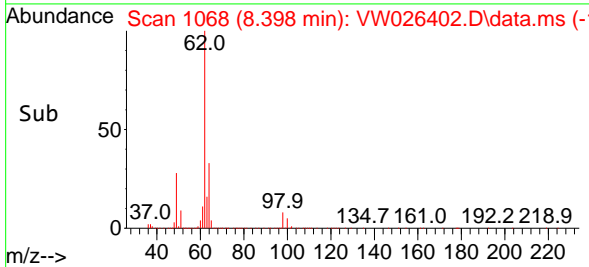
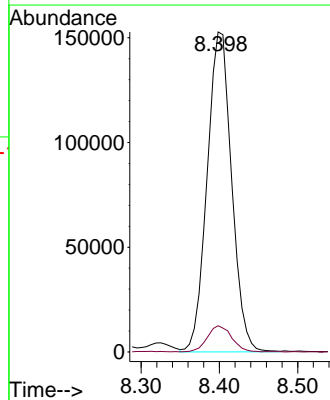
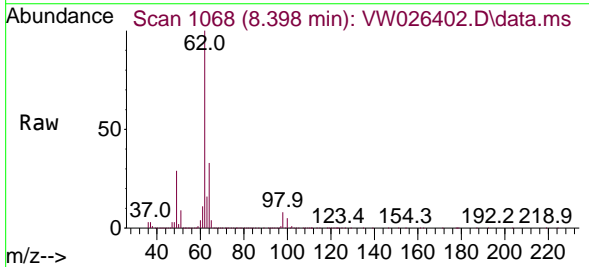
Instrument :
 MSVOA_W
 ClientSampleId :
 A46K6MS

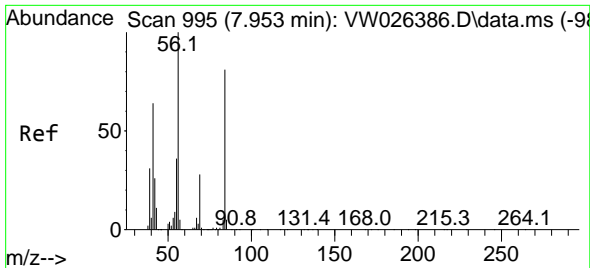
Tgt Ion: 83 Resp: 445923
 Ion Ratio Lower Upper
 83 100
 85 65.4 45.3 84.1



#27
 1,2-Dichloroethane
 Concen: 20.278 ug/L
 RT: 8.398 min Scan# 1068
 Delta R.T. 0.000 min
 Lab File: VW026402.D
 Acq: 28 Jun 2023 16:45

Tgt Ion: 62 Resp: 332334
 Ion Ratio Lower Upper
 62 100
 98 8.2 7.5 11.3



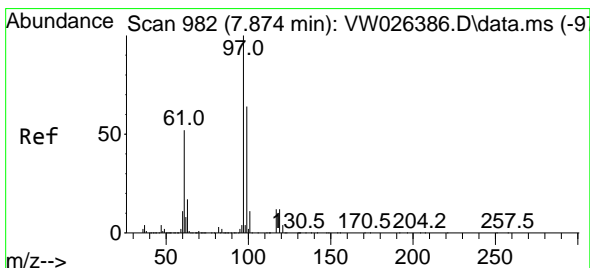
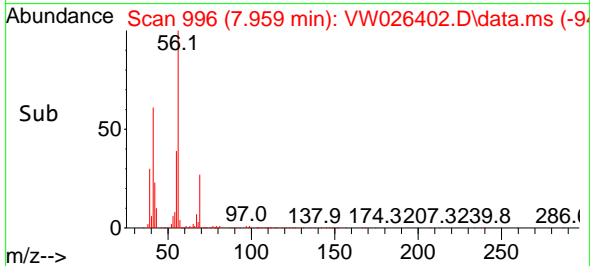
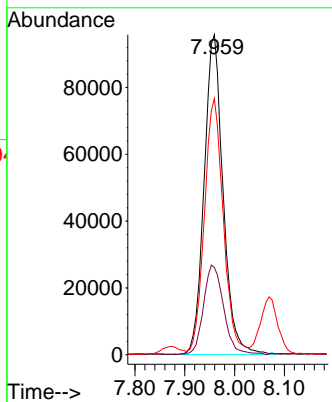
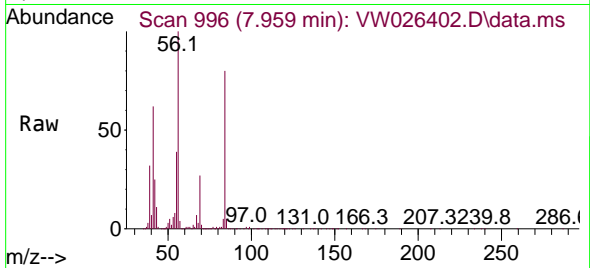


#29
 Cyclohexane
 Concen: 12.527 ug/L
 RT: 7.959 min Scan# 996
 Delta R.T. 0.007 min
 Lab File: VW026402.D
 Acq: 28 Jun 2023 16:45

Instrument :
 MSVOA_W
 ClientSampleId :
 A46K6MS

Tgt Ion: 56 Resp: 252551

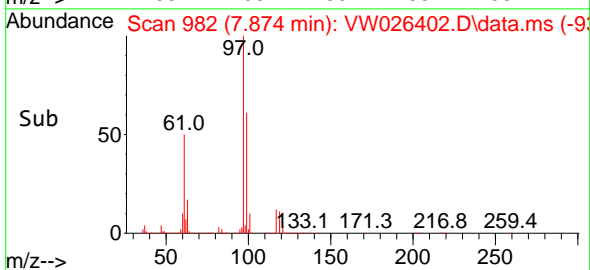
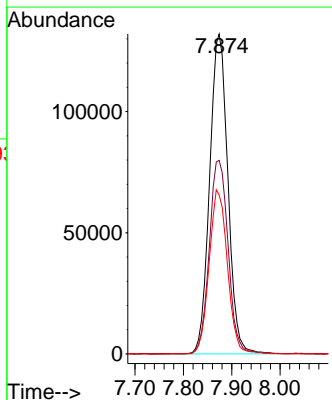
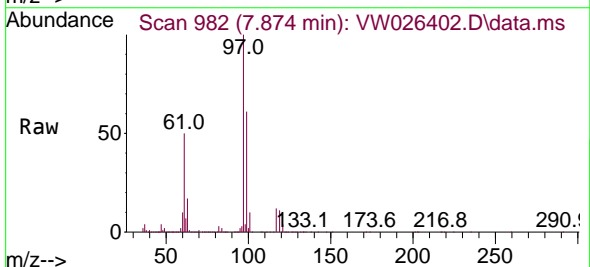
Ion	Ratio	Lower	Upper
56	100		
69	29.3	23.0	34.4
84	80.1	63.4	95.0

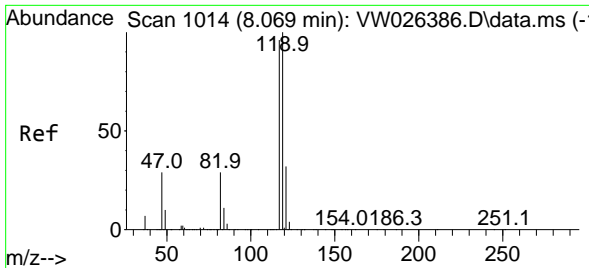


#30
 1,1,1-Trichloroethane
 Concen: 20.469 ug/L
 RT: 7.874 min Scan# 982
 Delta R.T. 0.000 min
 Lab File: VW026402.D
 Acq: 28 Jun 2023 16:45

Tgt Ion: 97 Resp: 345691

Ion	Ratio	Lower	Upper
97	100		
99	62.6	50.8	76.2
61	51.3	41.4	62.2

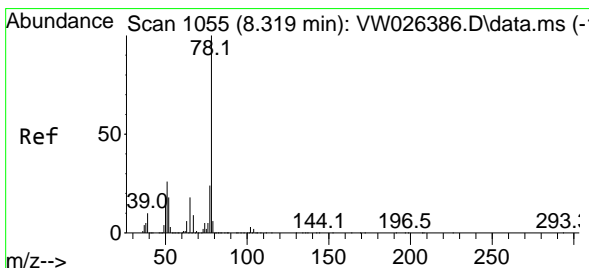
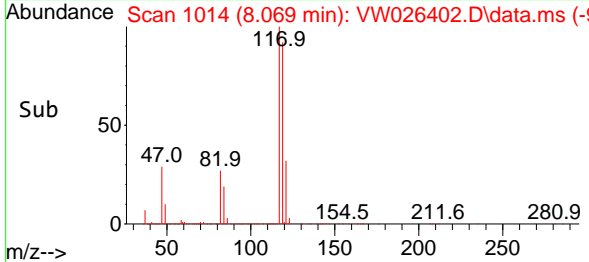
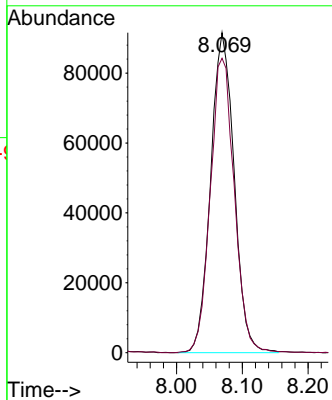
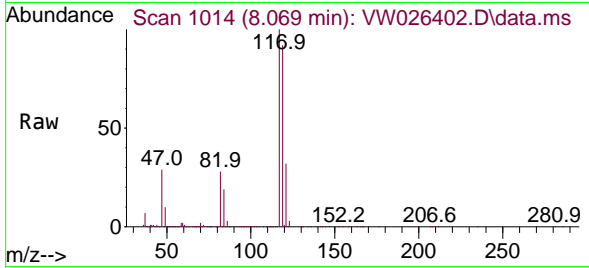




#31
 Carbon tetrachloride
 Concen: 14.976 ug/L
 RT: 8.069 min Scan# 1014
 Delta R.T. 0.000 min
 Lab File: VW026402.D
 Acq: 28 Jun 2023 16:45

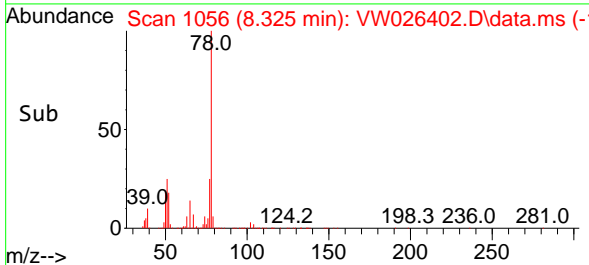
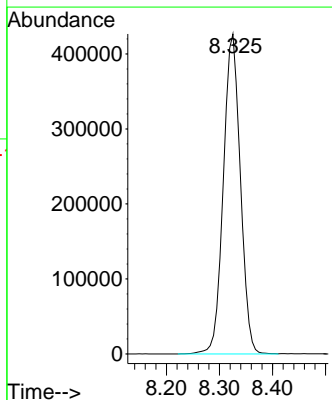
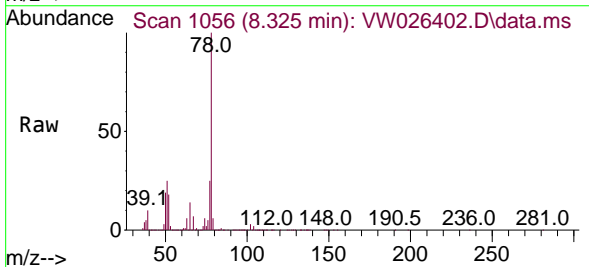
Instrument : MSVOA_W
 ClientSampleId : A46K6MS

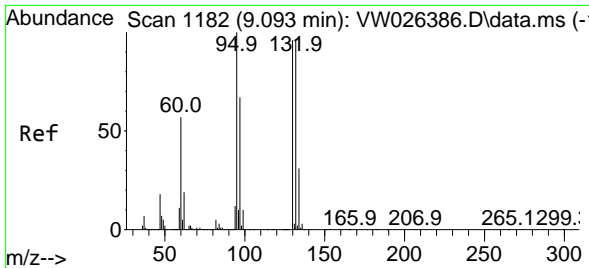
Tgt Ion:117 Resp: 227368
 Ion Ratio Lower Upper
 117 100
 119 94.1 77.7 116.5



#33
 Benzene
 Concen: 20.169 ug/L
 RT: 8.325 min Scan# 1056
 Delta R.T. 0.007 min
 Lab File: VW026402.D
 Acq: 28 Jun 2023 16:45

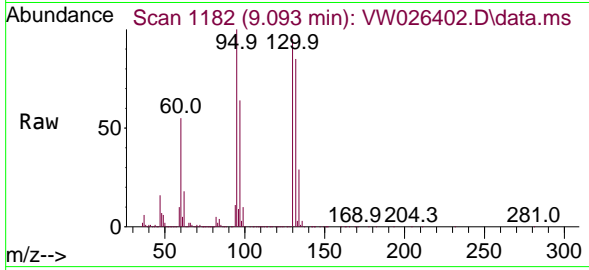
Tgt Ion: 78 Resp: 951105





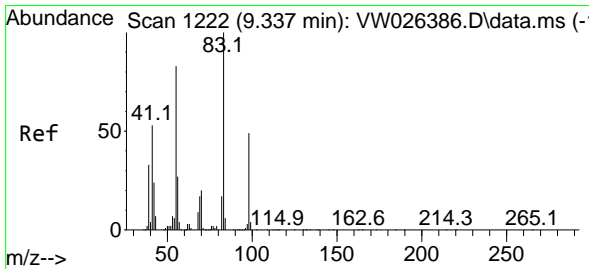
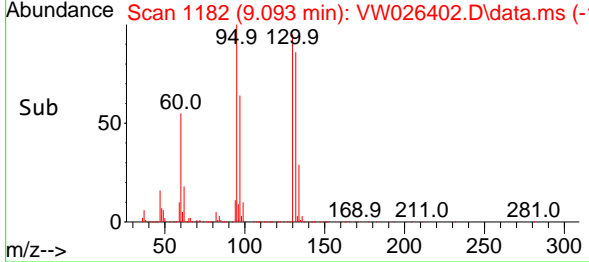
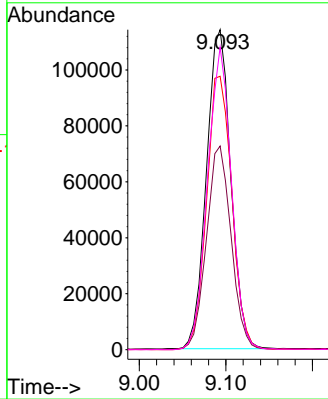
#34
 Trichloroethene
 Concen: 18.463 ug/L
 RT: 9.093 min Scan# 1182
 Delta R.T. 0.000 min
 Lab File: VW026402.D
 Acq: 28 Jun 2023 16:45

Instrument : MSVOA_W
 ClientSampleId : A46K6MS

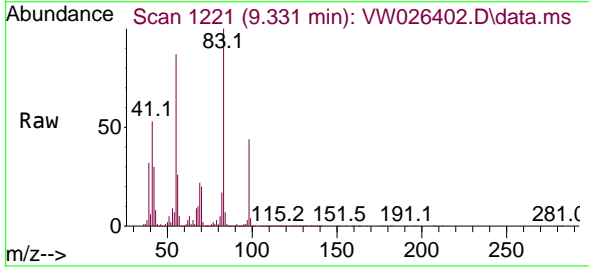


Tgt Ion: 95 Resp: 222923

Ion	Ratio	Lower	Upper
95	100		
97	63.7	44.5	82.7
132	85.4	63.3	117.5
130	94.5	64.9	120.5

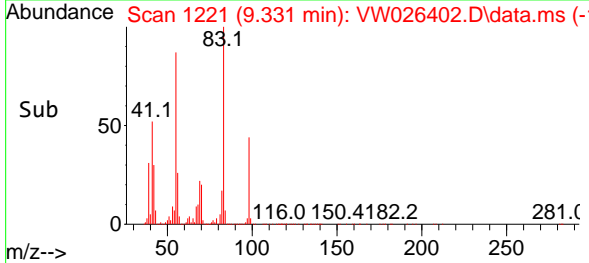
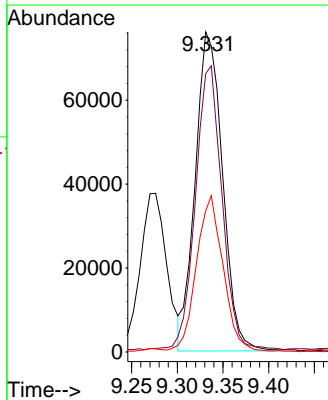


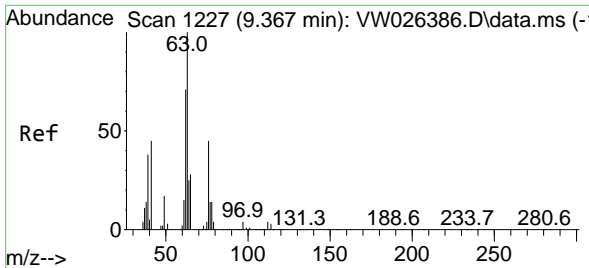
#35
 Methylcyclohexane
 Concen: 7.623 ug/L
 RT: 9.331 min Scan# 1221
 Delta R.T. -0.006 min
 Lab File: VW026402.D
 Acq: 28 Jun 2023 16:45



Tgt Ion: 83 Resp: 157834

Ion	Ratio	Lower	Upper
83	100		
55	86.3	68.8	103.2
98	47.7	37.8	56.6

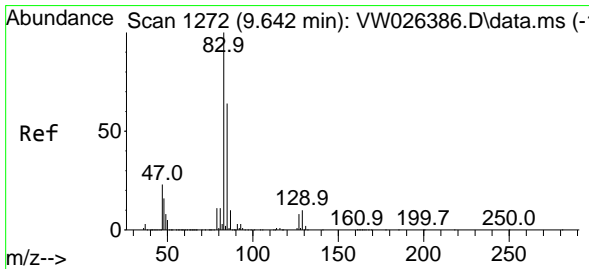
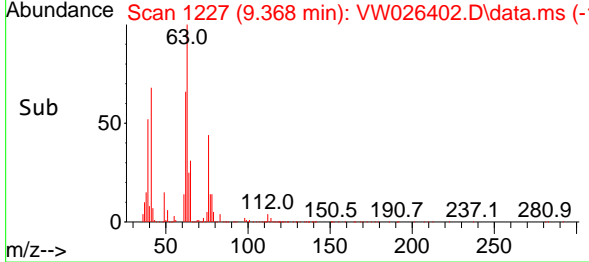
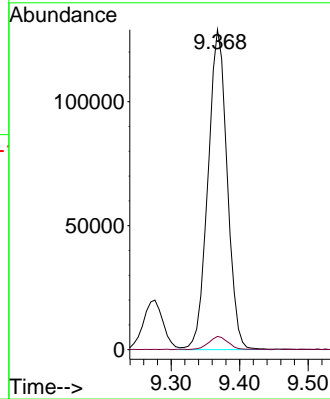
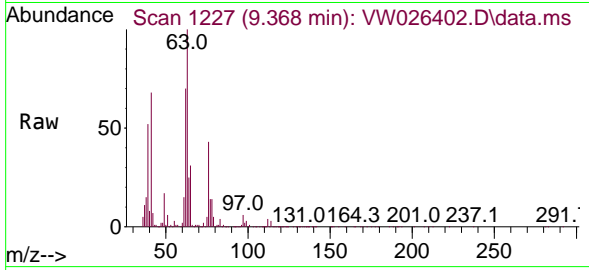




#37
 1,2-Dichloropropane
 Concen: 19.069 ug/L
 RT: 9.368 min Scan# 111
 Delta R.T. 0.000 min
 Lab File: VW026402.D
 Acq: 28 Jun 2023 16:45

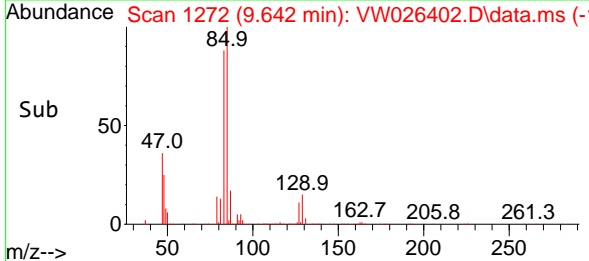
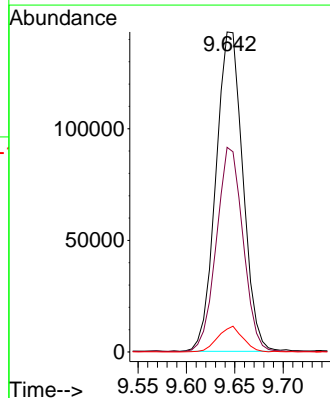
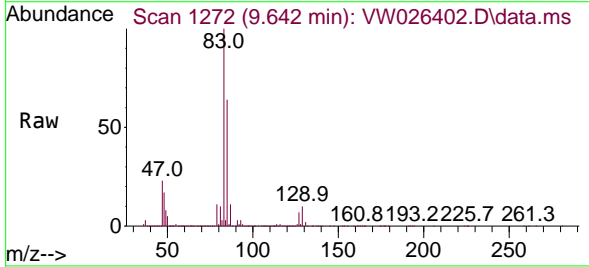
Instrument :
 MSVOA_W
 ClientSampleId :
 A46K6MS

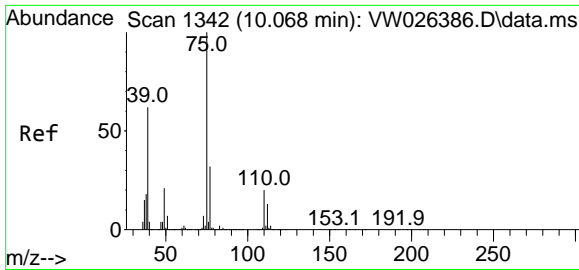
Tgt Ion: 63 Resp: 251238
 Ion Ratio Lower Upper
 63 100
 112 4.0 3.0 4.6



#38
 Bromodichloromethane
 Concen: 18.327 ug/L
 RT: 9.642 min Scan# 1272
 Delta R.T. 0.000 min
 Lab File: VW026402.D
 Acq: 28 Jun 2023 16:45

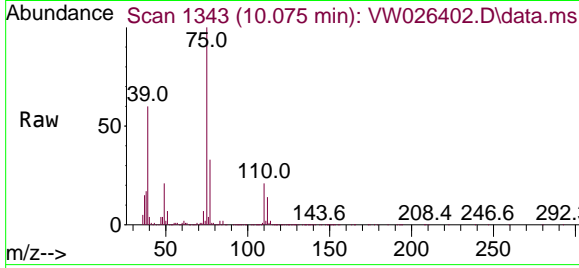
Tgt Ion: 83 Resp: 277288
 Ion Ratio Lower Upper
 83 100
 85 64.0 44.9 83.5
 127 7.2 6.2 9.2



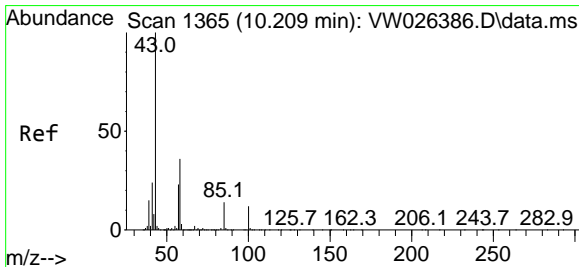
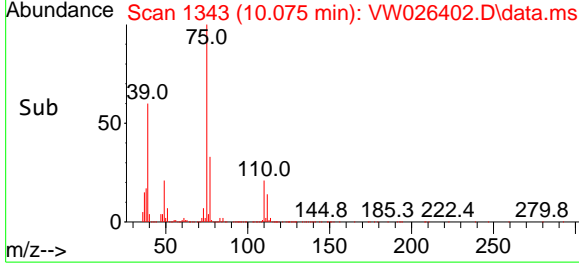
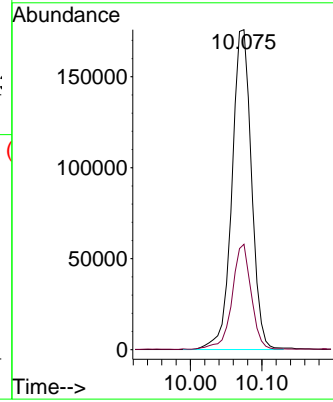


#39
 cis-1,3-Dichloropropene
 Concen: 17.676 ug/L
 RT: 10.075 min Scan# 1343
 Delta R.T. 0.007 min
 Lab File: VW026402.D
 Acq: 28 Jun 2023 16:45

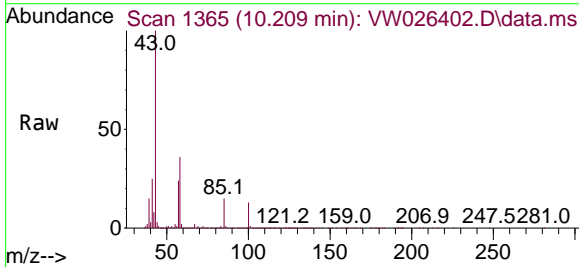
Instrument :
 MSVOA_W
 ClientSampleId :
 A46K6MS



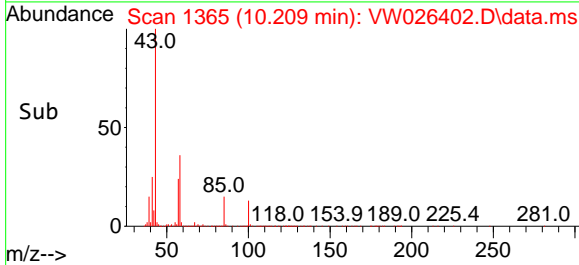
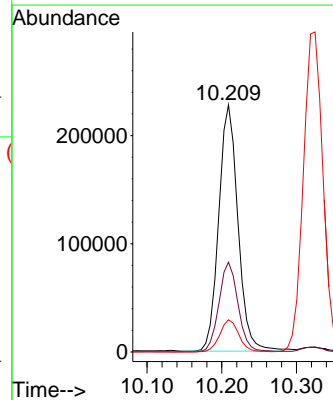
Tgt Ion: 75 Resp: 333660
 Ion Ratio Lower Upper
 75 100
 77 32.9 22.8 42.4

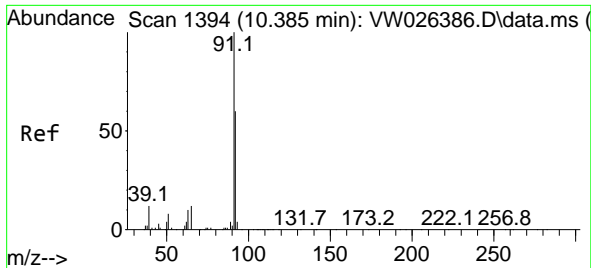


#40
 4-Methyl-2-pentanone
 Concen: 47.902 ug/L
 RT: 10.209 min Scan# 1365
 Delta R.T. 0.000 min
 Lab File: VW026402.D
 Acq: 28 Jun 2023 16:45



Tgt Ion: 43 Resp: 407367
 Ion Ratio Lower Upper
 43 100
 58 36.1 28.6 42.8
 100 13.1 9.9 14.9

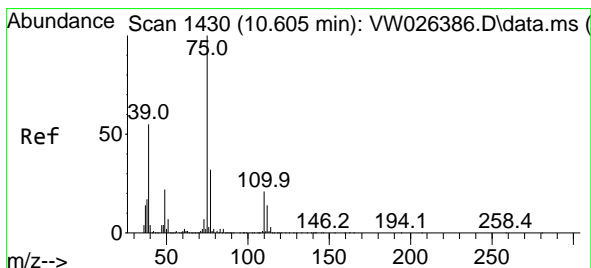
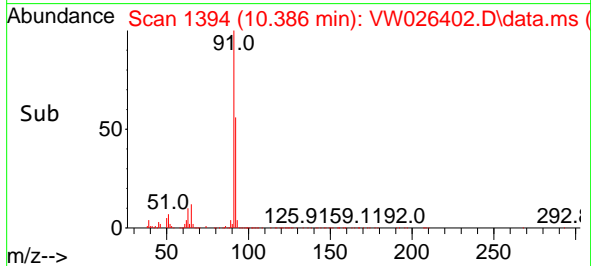
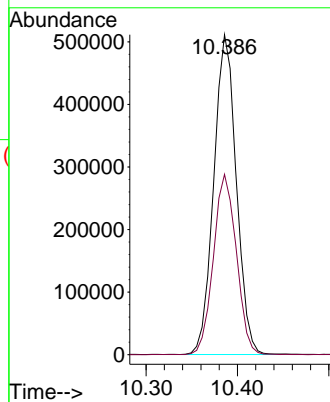
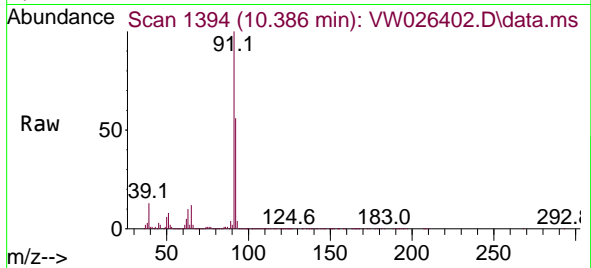




#42
 Toluene
 Concen: 18.525 ug/L
 RT: 10.386 min Scan# 11
 Delta R.T. 0.000 min
 Lab File: VW026402.D
 Acq: 28 Jun 2023 16:45

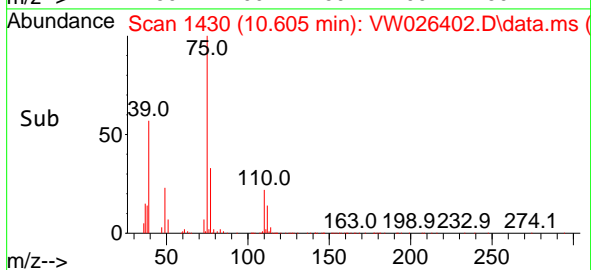
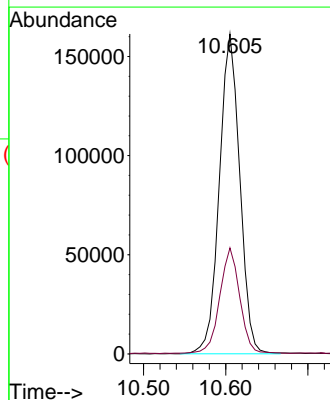
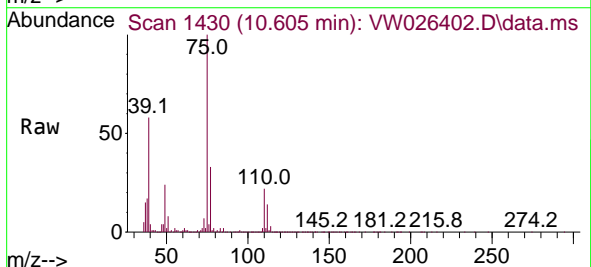
Instrument :
 MSVOA_W
 ClientSampleId :
 A46K6MS

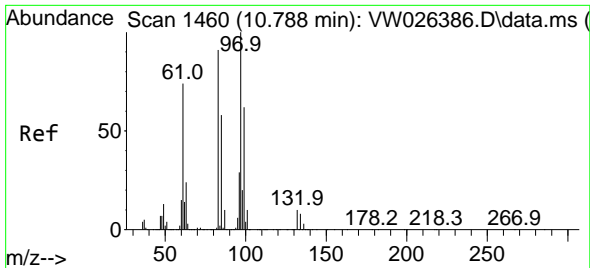
Tgt Ion: 91 Resp: 876357
 Ion Ratio Lower Upper
 91 100
 92 56.4 40.3 74.8



#44
 trans-1,3-Dichloropropene
 Concen: 17.475 ug/L
 RT: 10.605 min Scan# 1430
 Delta R.T. 0.000 min
 Lab File: VW026402.D
 Acq: 28 Jun 2023 16:45

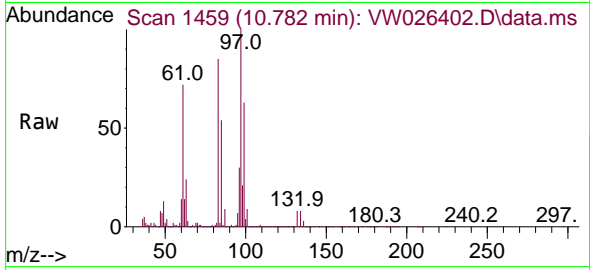
Tgt Ion: 75 Resp: 278446
 Ion Ratio Lower Upper
 75 100
 77 33.2 21.6 40.2





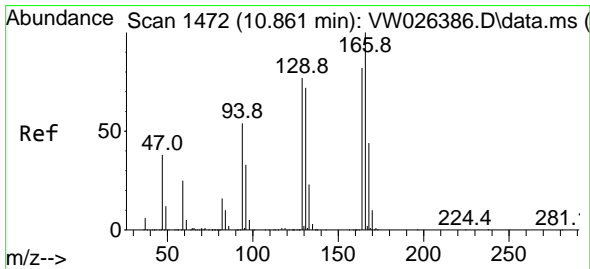
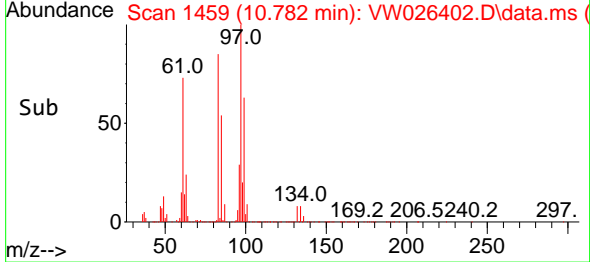
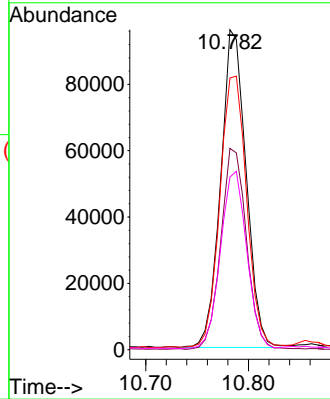
#45
 1,1,2-Trichloroethane
 Concen: 18.657 ug/L
 RT: 10.782 min Scan# 1460
 Delta R.T. -0.006 min
 Lab File: VW026402.D
 Acq: 28 Jun 2023 16:45

Instrument : MSVOA_W
 ClientSampleId : A46K6MS

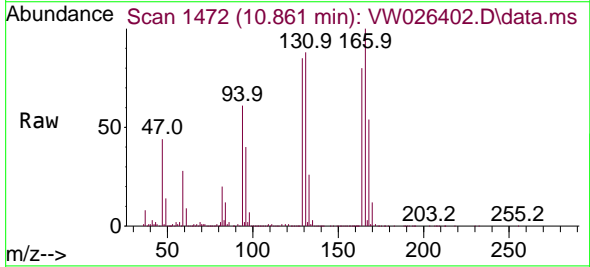


Tgt Ion: 97 Resp: 164588

Ion	Ratio	Lower	Upper
97	100		
99	62.9	42.4	78.6
83	84.9	60.8	113.0
85	53.9	39.1	72.7

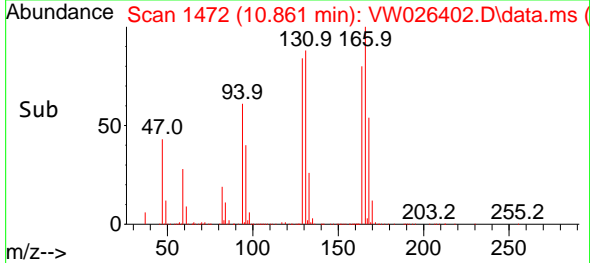
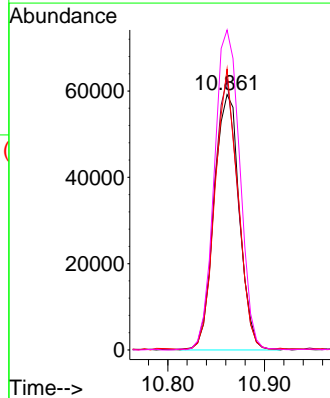


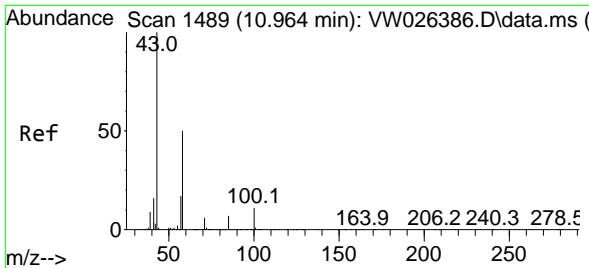
#46
 Tetrachloroethene
 Concen: 12.606 ug/L
 RT: 10.861 min Scan# 1472
 Delta R.T. 0.000 min
 Lab File: VW026402.D
 Acq: 28 Jun 2023 16:45



Tgt Ion: 164 Resp: 107228

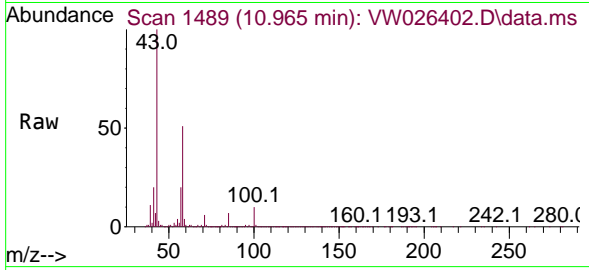
Ion	Ratio	Lower	Upper
164	100		
129	106.0	73.8	137.0
131	110.0	69.0	128.2
166	125.3	91.1	169.3





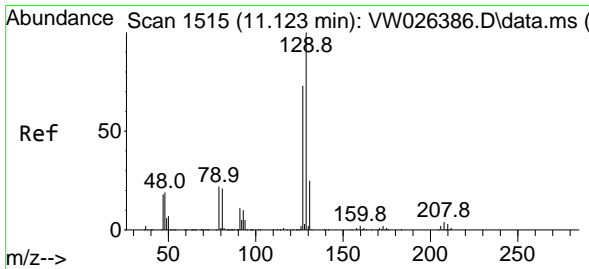
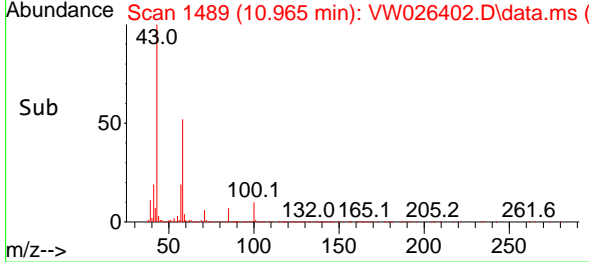
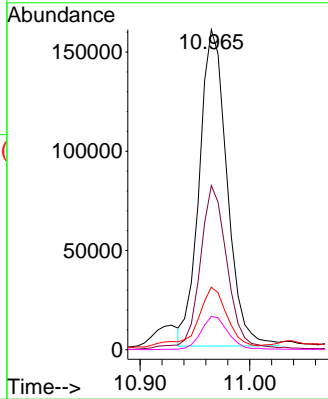
#48
 2-Hexanone
 Concen: 46.694 ug/L
 RT: 10.965 min Scan# 1489
 Delta R.T. 0.000 min
 Lab File: VW026402.D
 Acq: 28 Jun 2023 16:45

Instrument :
 MSVOA_W
 ClientSampleId :
 A46K6MS

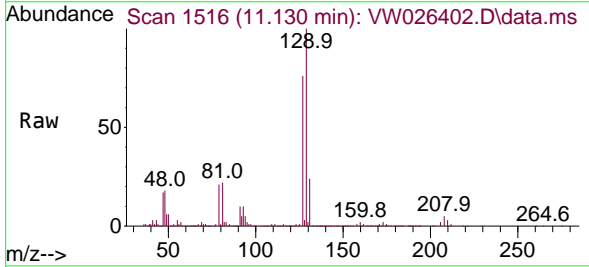


Tgt Ion: 43 Resp: 280191

Ion	Ratio	Lower	Upper
43	100		
58	49.5	40.1	60.1
57	17.6	13.4	20.0
100	10.5	8.2	12.2

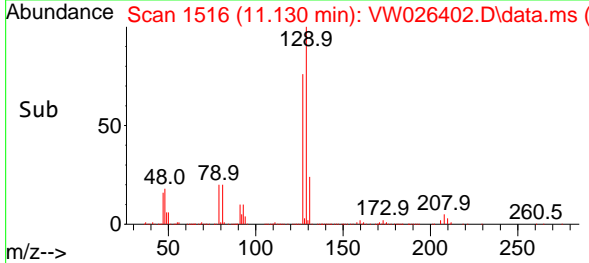
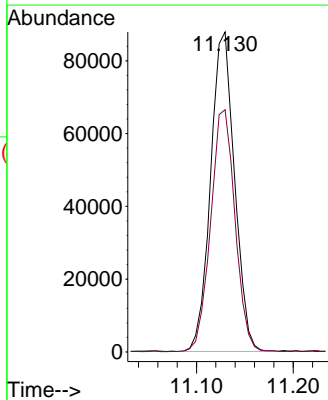


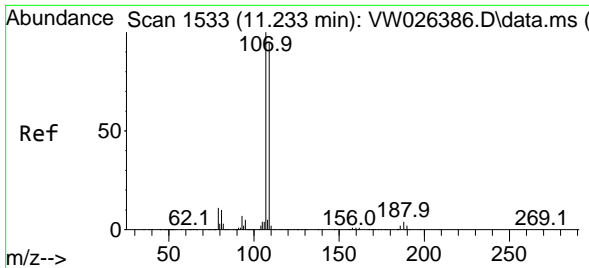
#49
 Dibromochloromethane
 Concen: 16.717 ug/L
 RT: 11.130 min Scan# 1516
 Delta R.T. 0.007 min
 Lab File: VW026402.D
 Acq: 28 Jun 2023 16:45



Tgt Ion: 129 Resp: 151005

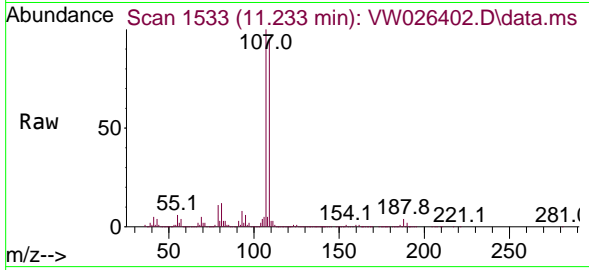
Ion	Ratio	Lower	Upper
129	100		
127	75.7	54.4	101.0



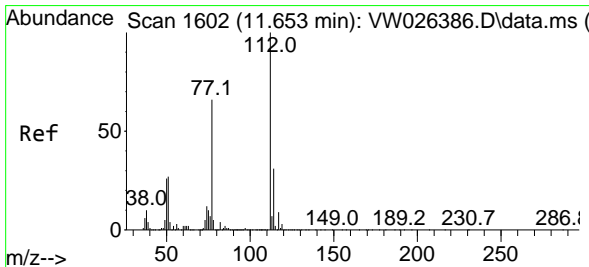
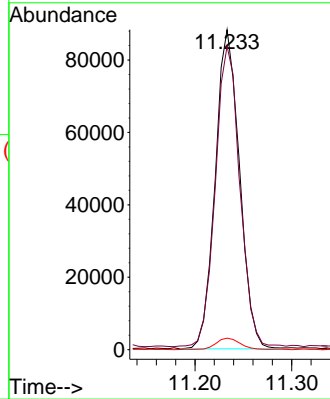
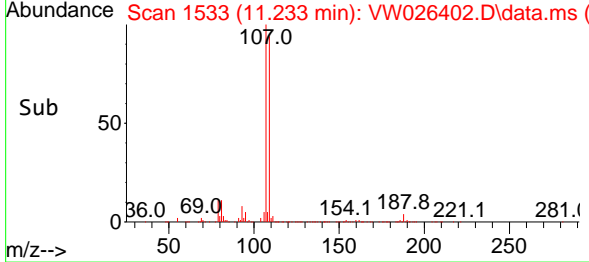


#50
 1,2-Dibromoethane
 Concen: 18.954 ug/L
 RT: 11.233 min Scan# 11
 Delta R.T. 0.000 min
 Lab File: VW026402.D
 Acq: 28 Jun 2023 16:45

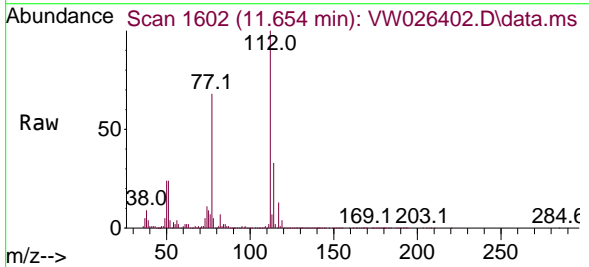
Instrument :
 MSVOA_W
 ClientSampleId :
 A46K6MS



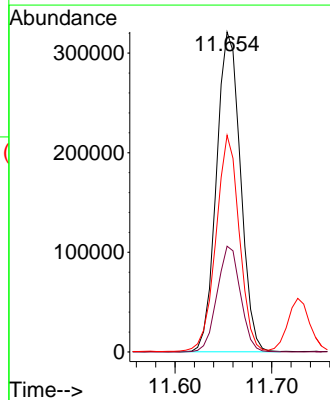
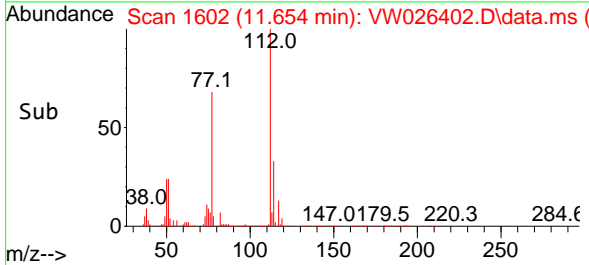
Tgt Ion:107 Resp: 153513
 Ion Ratio Lower Upper
 107 100
 109 94.8 67.1 124.5
 188 3.6 2.6 3.8

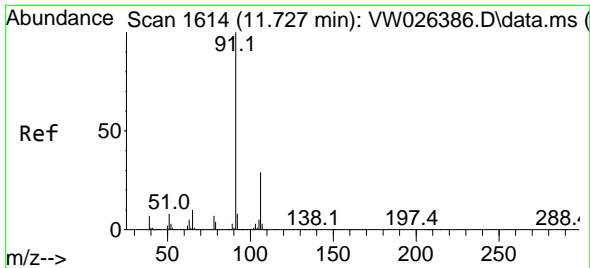


#51
 Chlorobenzene
 Concen: 18.321 ug/L
 RT: 11.654 min Scan# 1602
 Delta R.T. 0.000 min
 Lab File: VW026402.D
 Acq: 28 Jun 2023 16:45



Tgt Ion:112 Resp: 552832
 Ion Ratio Lower Upper
 112 100
 114 33.1 23.0 42.8
 77 67.7 53.2 79.8

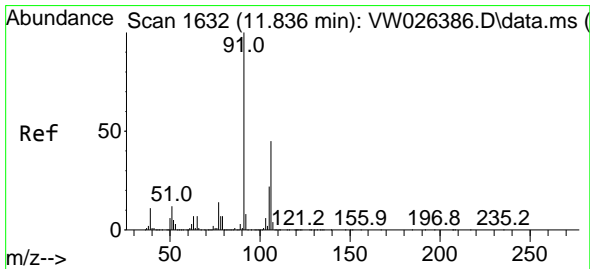
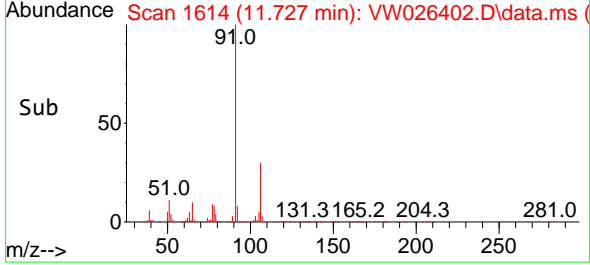
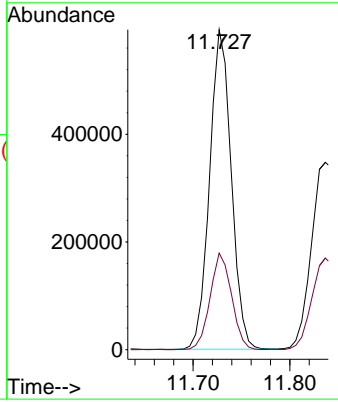
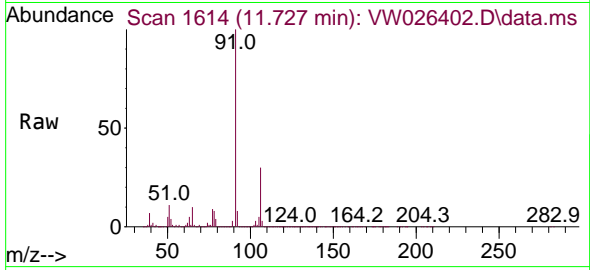




#52
 Ethylbenzene
 Concen: 17.319 ug/L
 RT: 11.727 min Scan# 1614
 Delta R.T. 0.000 min
 Lab File: VW026402.D
 Acq: 28 Jun 2023 16:45

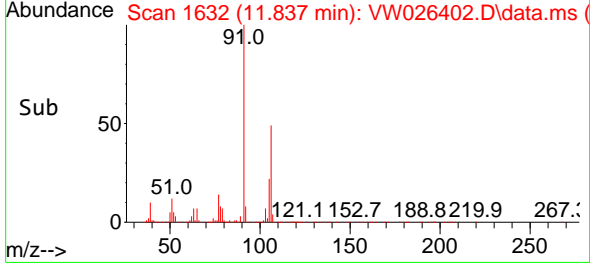
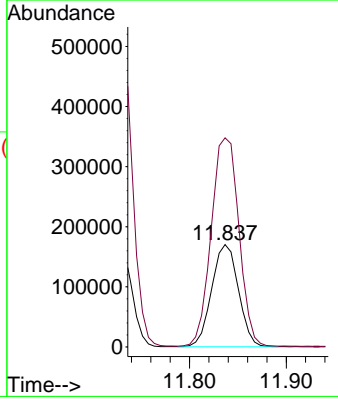
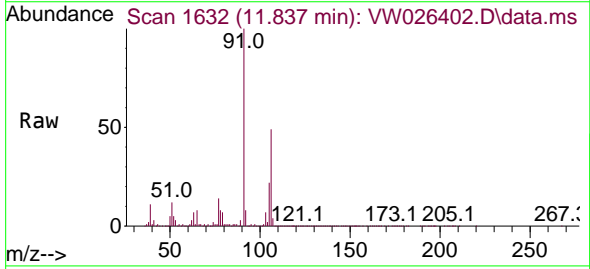
Instrument : MSVOA_W
 ClientSampleId : A46K6MS

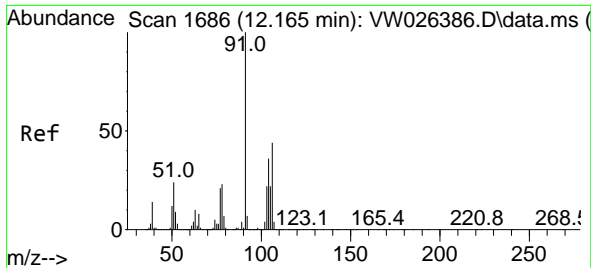
Tgt Ion: 91 Resp: 923194
 Ion Ratio Lower Upper
 91 100
 106 30.2 19.9 36.9



#53
 m,p-Xylene
 Concen: 16.787 ug/L
 RT: 11.837 min Scan# 1632
 Delta R.T. 0.000 min
 Lab File: VW026402.D
 Acq: 28 Jun 2023 16:45

Tgt Ion: 106 Resp: 326354
 Ion Ratio Lower Upper
 106 100
 91 204.4 152.1 282.5

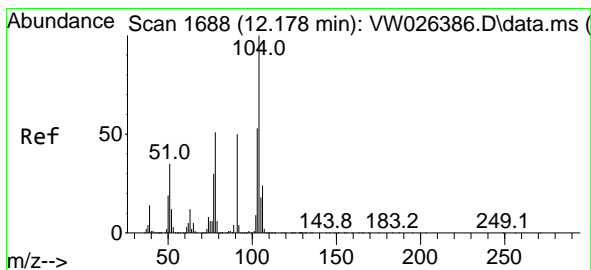
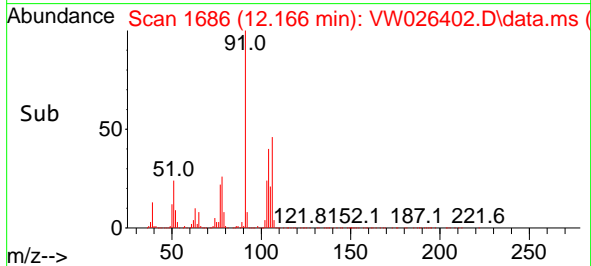
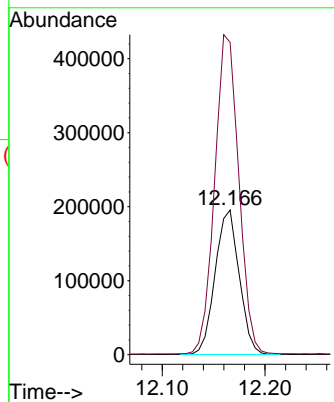
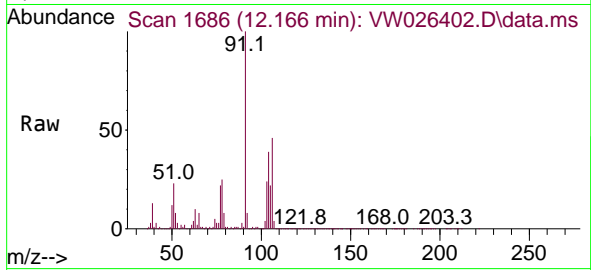




#54
 o-Xylene
 Concen: 17.358 ug/L
 RT: 12.166 min Scan# 1686
 Delta R.T. 0.000 min
 Lab File: VW026402.D
 Acq: 28 Jun 2023 16:45

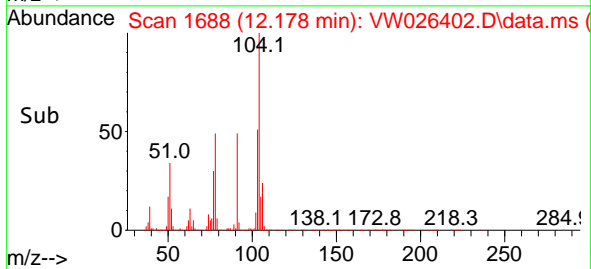
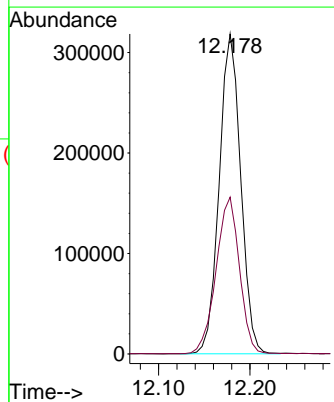
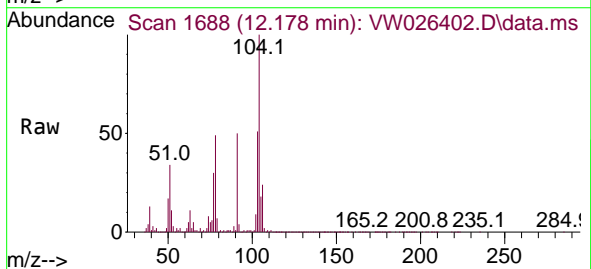
Instrument :
 MSVOA_W
 ClientSampleId :
 A46K6MS

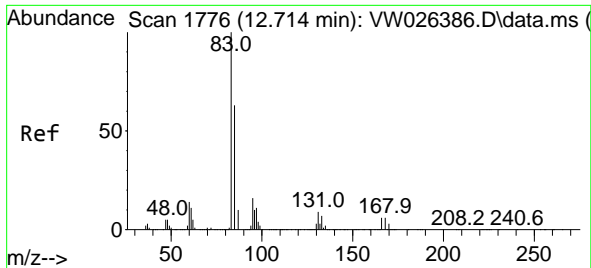
Tgt Ion:106 Resp: 317728
 Ion Ratio Lower Upper
 106 100
 91 215.9 161.5 299.9



#55
 Styrene
 Concen: 16.338 ug/L
 RT: 12.178 min Scan# 1688
 Delta R.T. 0.000 min
 Lab File: VW026402.D
 Acq: 28 Jun 2023 16:45

Tgt Ion:104 Resp: 521592
 Ion Ratio Lower Upper
 104 100
 78 49.0 33.3 61.9



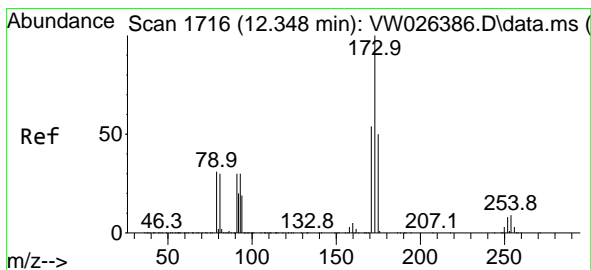
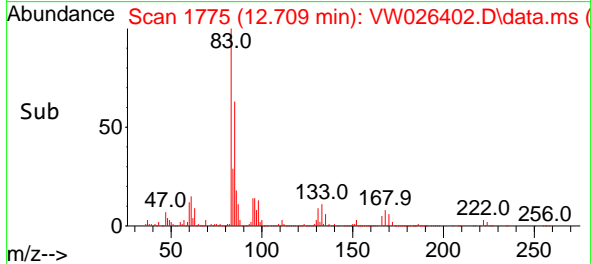
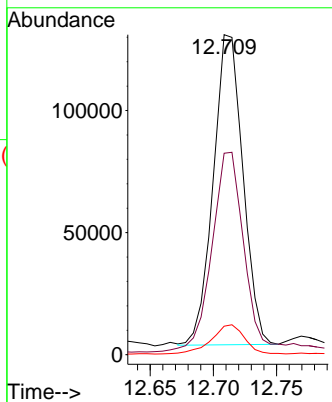
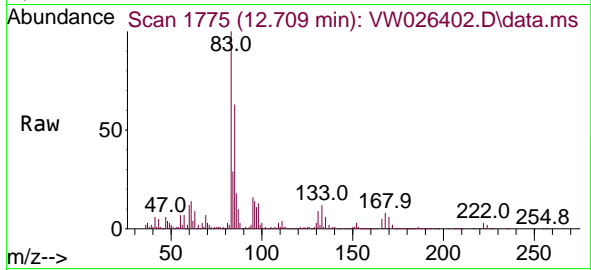


#57
 1,1,2-Tetrachloroethane
 Concen: 18.775 ug/L
 RT: 12.709 min Scan# 1775
 Delta R.T. -0.006 min
 Lab File: VW026402.D
 Acq: 28 Jun 2023 16:45

Instrument : MSVOA_W
 ClientSampleId : A46K6MS

Tgt Ion: 83 Resp: 207032

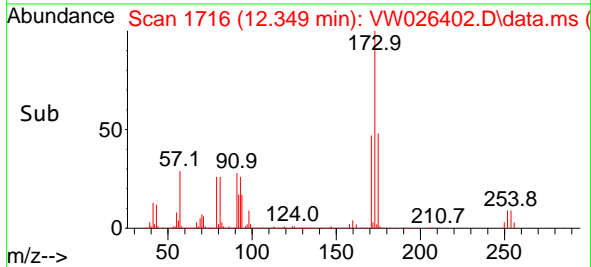
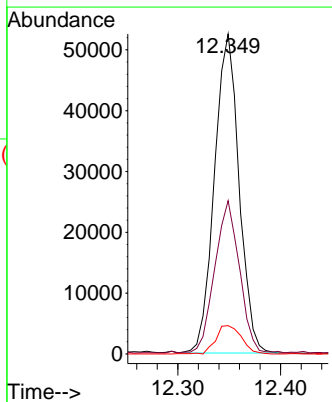
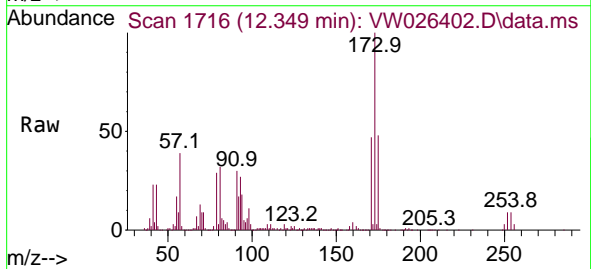
Ion	Ratio	Lower	Upper
83	100		
85	62.9	43.7	81.1
131	8.9	7.4	11.0

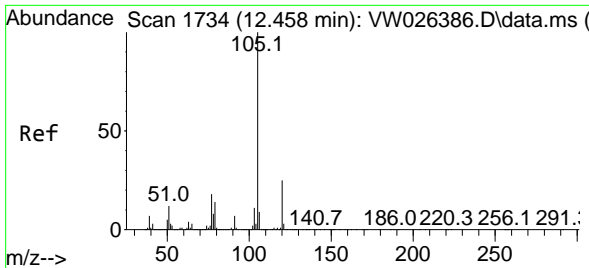


#59
 Bromoform
 Concen: 32.284 ug/L
 RT: 12.349 min Scan# 1716
 Delta R.T. 0.000 min
 Lab File: VW026402.D
 Acq: 28 Jun 2023 16:45

Tgt Ion: 173 Resp: 87230

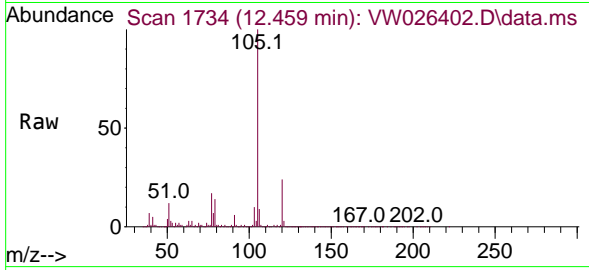
Ion	Ratio	Lower	Upper
173	100		
175	47.7	39.7	59.5
254	9.2	7.1	10.7



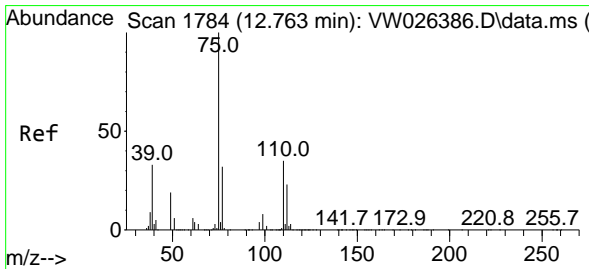
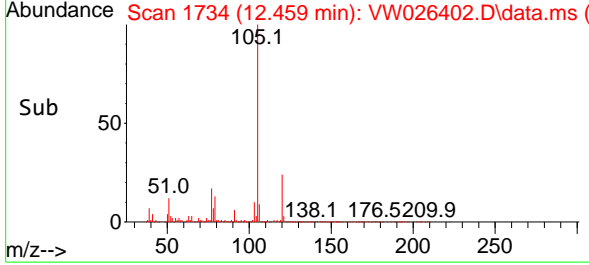
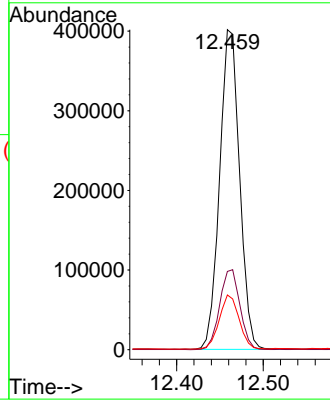


#60
 Isopropylbenzene
 Concen: 23.946 ug/L
 RT: 12.459 min Scan# 1734
 Delta R.T. 0.000 min
 Lab File: VW026402.D
 Acq: 28 Jun 2023 16:45

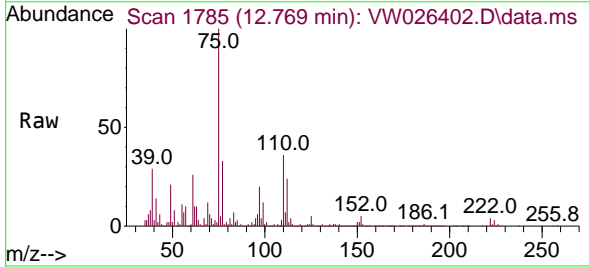
Instrument : MSVOA_W
 ClientSampleId : A46K6MS



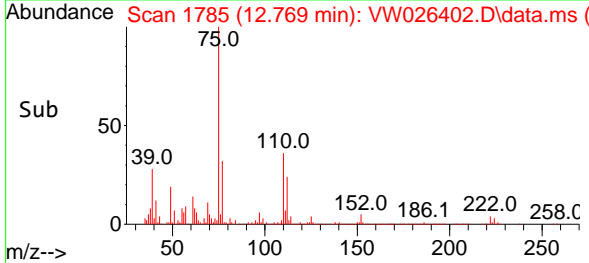
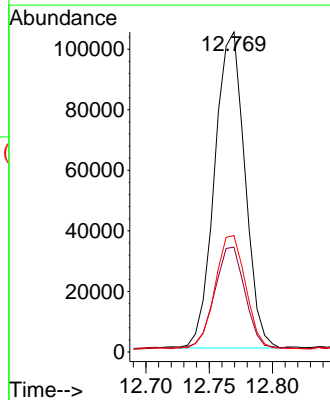
Tgt Ion:105 Resp: 642810
 Ion Ratio Lower Upper
 105 100
 120 25.3 20.4 30.6
 77 16.7 13.6 20.4

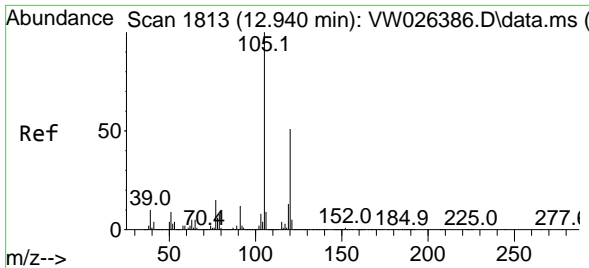


#61
 1,2,3-Trichloropropane
 Concen: 39.937 ug/L
 RT: 12.769 min Scan# 1785
 Delta R.T. 0.007 min
 Lab File: VW026402.D
 Acq: 28 Jun 2023 16:45



Tgt Ion: 75 Resp: 173392
 Ion Ratio Lower Upper
 75 100
 77 32.6 25.9 38.9
 110 36.7 29.4 44.0

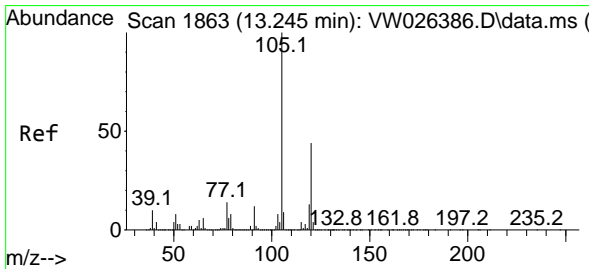
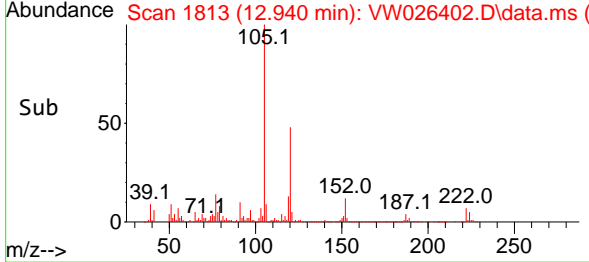
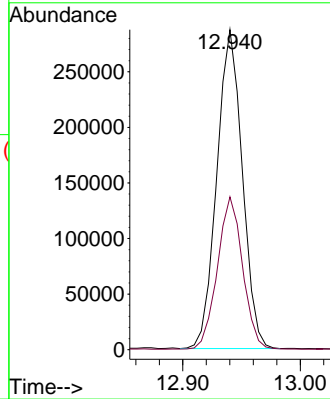
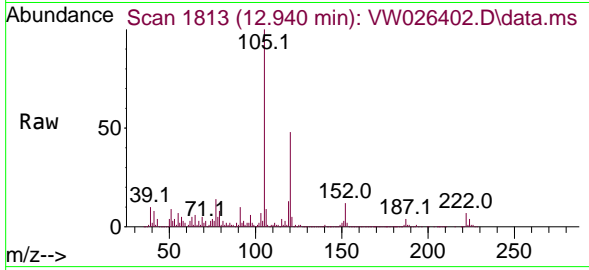




#62
 1,3,5-Trimethylbenzene
 Concen: 20.795 ug/L
 RT: 12.940 min Scan# 1813
 Delta R.T. 0.000 min
 Lab File: VW026402.D
 Acq: 28 Jun 2023 16:45

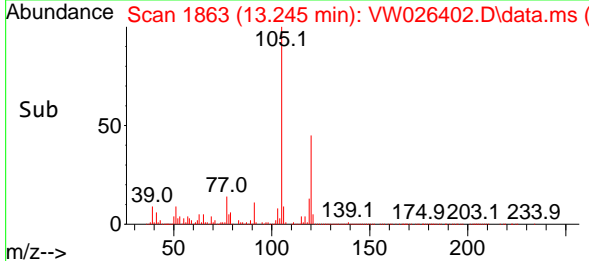
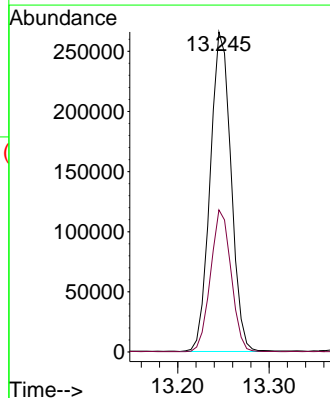
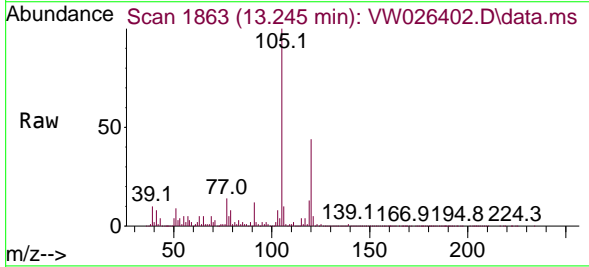
Instrument :
 MSVOA_W
 ClientSampleId :
 A46K6MS

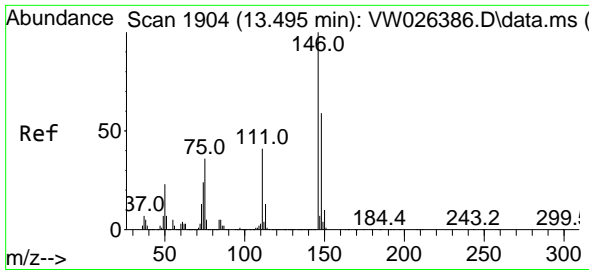
Tgt Ion:105 Resp: 432729
 Ion Ratio Lower Upper
 105 100
 120 47.5 38.1 57.1



#63
 1,2,4-Trimethylbenzene
 Concen: 20.981 ug/L
 RT: 13.245 min Scan# 1863
 Delta R.T. 0.000 min
 Lab File: VW026402.D
 Acq: 28 Jun 2023 16:45

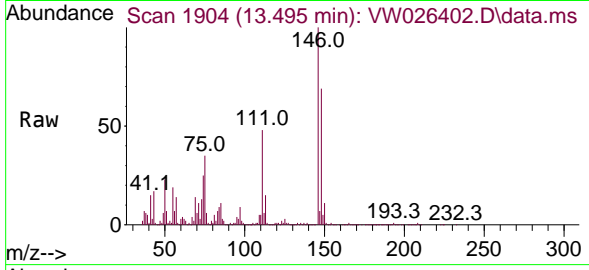
Tgt Ion:105 Resp: 421095
 Ion Ratio Lower Upper
 105 100
 120 43.6 35.0 52.6



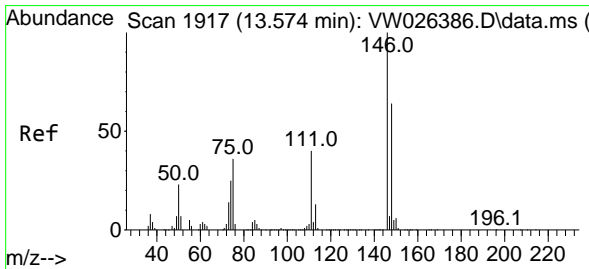
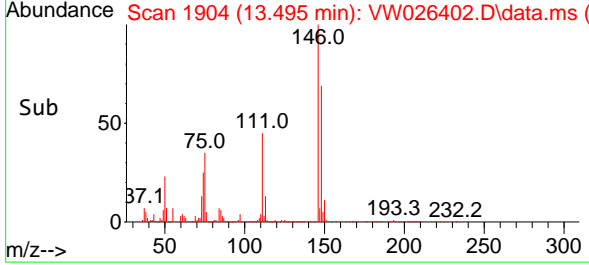
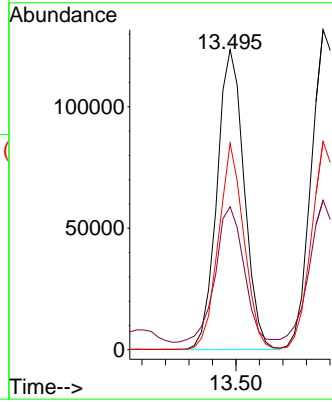


#64
 1,3-Dichlorobenzene
 Concen: 17.280 ug/L
 RT: 13.495 min Scan# 1904
 Delta R.T. 0.000 min
 Lab File: VW026402.D
 Acq: 28 Jun 2023 16:45

Instrument : MSVOA_W
 ClientSampleId : A46K6MS

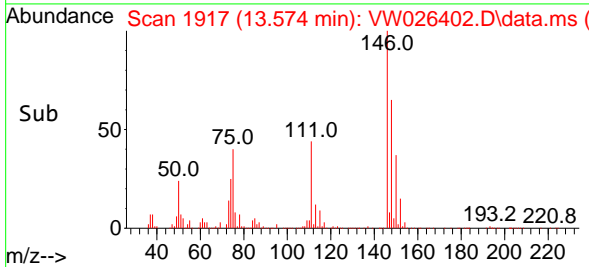
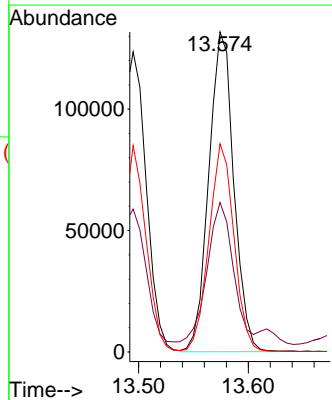
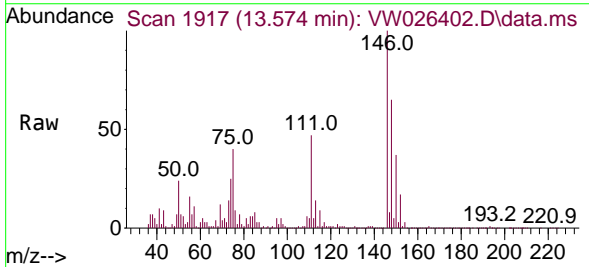


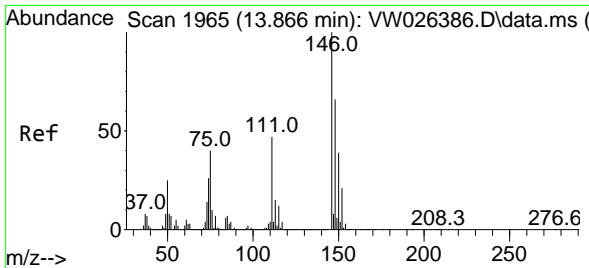
Tgt Ion:146 Resp: 198680
 Ion Ratio Lower Upper
 146 100
 111 47.6 30.8 57.2
 148 68.8 43.3 80.3



#65
 1,4-Dichlorobenzene
 Concen: 18.193 ug/L
 RT: 13.574 min Scan# 1917
 Delta R.T. 0.000 min
 Lab File: VW026402.D
 Acq: 28 Jun 2023 16:45

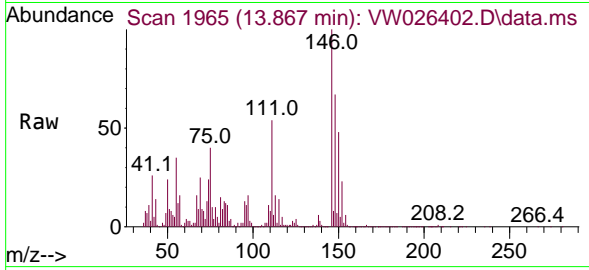
Tgt Ion:146 Resp: 209341
 Ion Ratio Lower Upper
 146 100
 111 46.7 30.0 55.8
 148 65.0 43.7 81.1



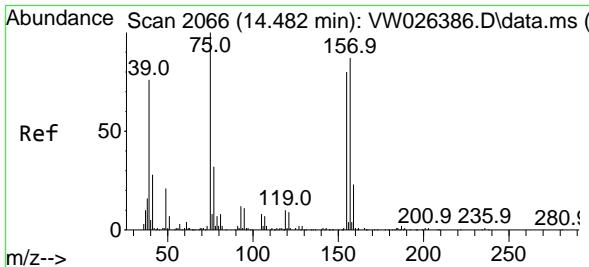
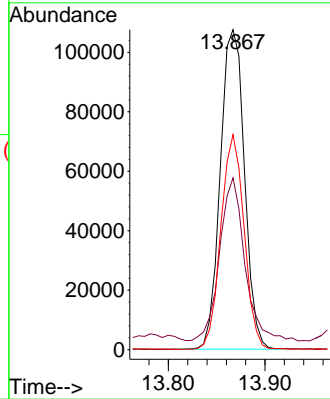
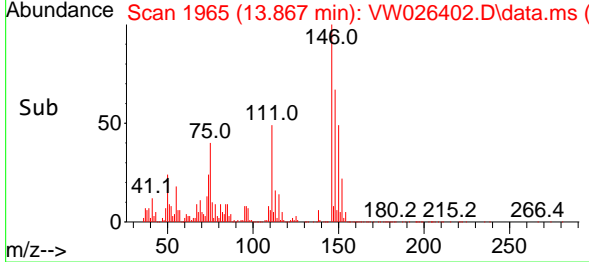


#67
 1,2-Dichlorobenzene
 Concen: 18.143 ug/L
 RT: 13.867 min Scan# 1965
 Delta R.T. 0.000 min
 Lab File: VW026402.D
 Acq: 28 Jun 2023 16:45

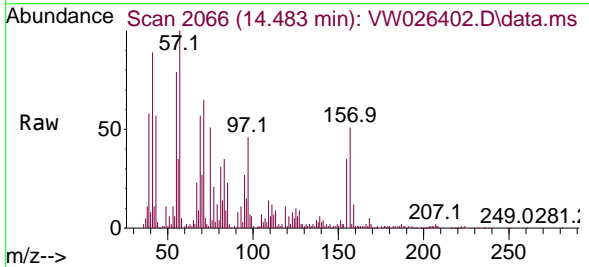
Instrument : MSVOA_W
 ClientSampleId : A46K6MS



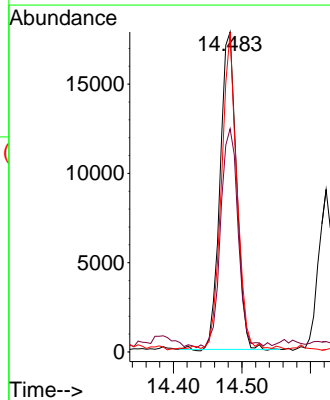
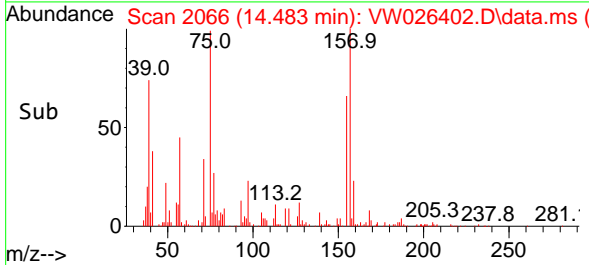
Tgt Ion:146 Resp: 185791
 Ion Ratio Lower Upper
 146 100
 111 53.7 36.0 54.0
 148 67.2 47.8 71.8

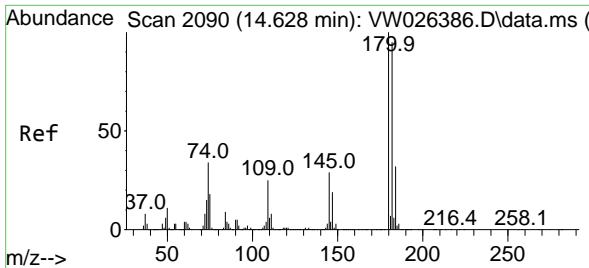


#68
 1,2-Dibromo-3-chloropropane
 Concen: 29.399 ug/L
 RT: 14.483 min Scan# 2066
 Delta R.T. 0.000 min
 Lab File: VW026402.D
 Acq: 28 Jun 2023 16:45



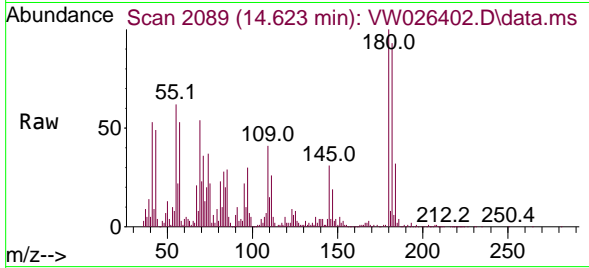
Tgt Ion: 75 Resp: 29419
 Ion Ratio Lower Upper
 75 100
 155 69.8 57.5 86.3
 157 99.9 73.4 110.0





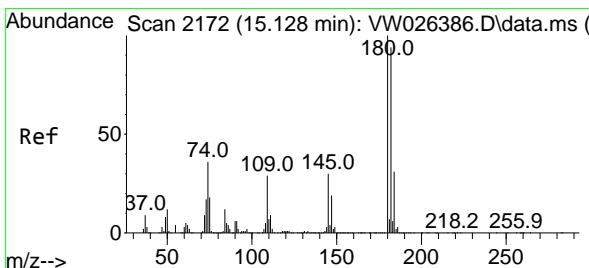
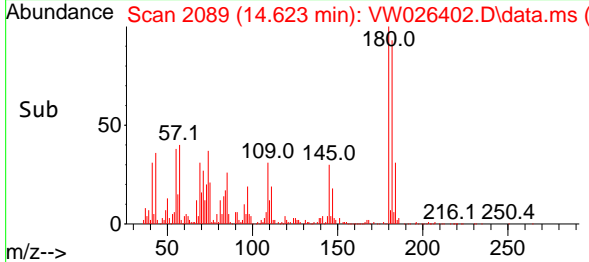
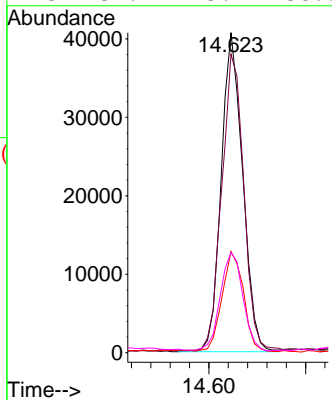
#69
 1,3,5-Trichlorobenzene
 Concen: 8.475 ug/L
 RT: 14.623 min Scan# 2090
 Delta R.T. -0.006 min
 Lab File: VW026402.D
 Acq: 28 Jun 2023 16:45

Instrument : MSVOA_W
 Client Sample Id : A46K6MS



Tgt Ion:180 Resp: 62617

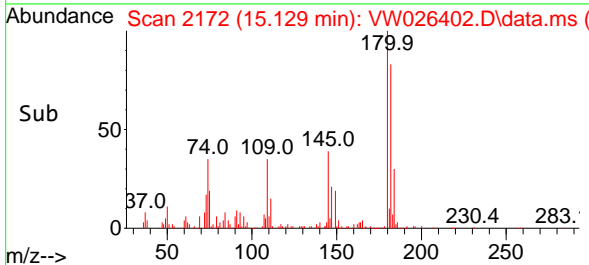
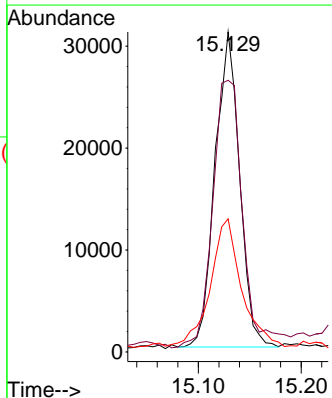
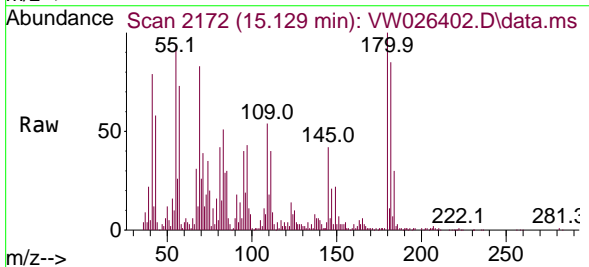
Ion	Ratio	Lower	Upper
180	100		
182	95.3	74.2	111.4
184	31.4	23.8	35.6
145	32.4	25.4	38.0

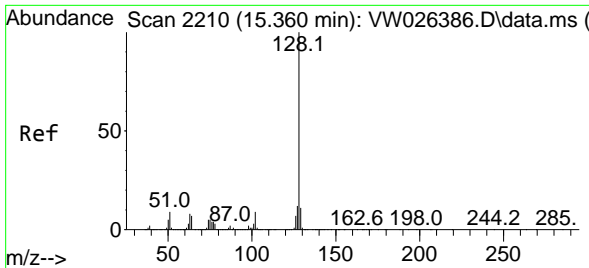


#70
 1,2,4-trichlorobenzene
 Concen: 8.473 ug/L
 RT: 15.129 min Scan# 2172
 Delta R.T. 0.000 min
 Lab File: VW026402.D
 Acq: 28 Jun 2023 16:45

Tgt Ion:180 Resp: 51230

Ion	Ratio	Lower	Upper
180	100		
182	99.4	75.6	113.4
145	51.1	24.7	37.1



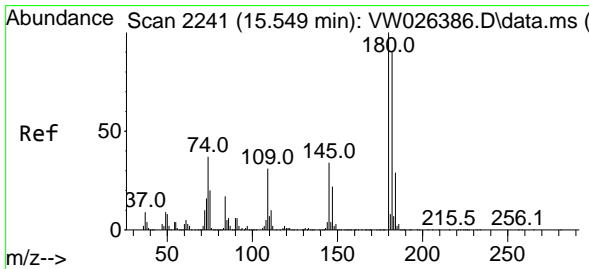
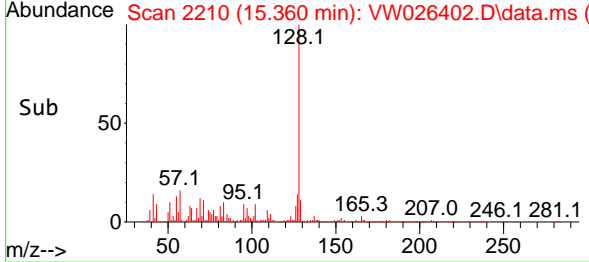
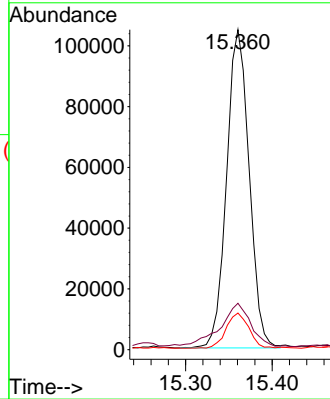
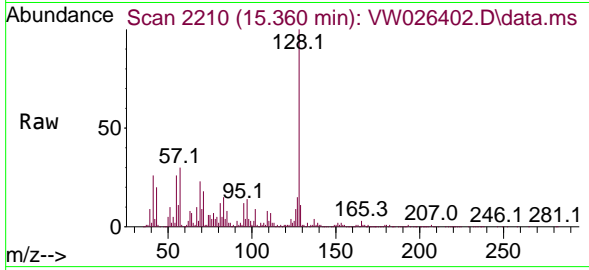


#71
 Naphthalene
 Concen: 15.622 ug/L
 RT: 15.360 min Scan# 211
 Delta R.T. 0.000 min
 Lab File: VW026402.D
 Acq: 28 Jun 2023 16:45

Instrument :
 MSVOA_W
 ClientSampleId :
 A46K6MS

Tgt Ion:128 Resp: 189872

Ion	Ratio	Lower	Upper
128	100		
127	18.7	10.9	16.3#
129	11.0	8.9	13.3



#72
 1,2,3-Trichlorobenzene
 Concen: 7.487 ug/L
 RT: 15.549 min Scan# 2241
 Delta R.T. 0.000 min
 Lab File: VW026402.D
 Acq: 28 Jun 2023 16:45

Tgt Ion:180 Resp: 42262

Ion	Ratio	Lower	Upper
180	100		
182	93.7	75.0	112.6
145	60.8	28.5	42.7#

