

Data Path : Z:\VOASRV\HPCHEM1\MSVOA W\DATA\VW062920\
 Data File : VW015770.D
 Acq On : 29 Jun 2020 18:44
 Operator : SY/VA
 Sample : VSTDCCC025EC
 Misc : 5.00G/10ML/MSVOA W/SOIL
 ALS Vial : 1 Sample Multiplier: 1

Instrument :
 MSVOA_W
 ClientSampleId :
 VSTD02517

Quant Time: Jun 30 03:07:23 2020
 Quant Method : Z:\VOASRV\HPCHEM1\MSVOA_W\METHOD\SOM2WLM062920S.M
 Quant Title : VOC Analysis
 QLast Update : Tue Jun 30 03:03:23 2020
 Response via : Initial Calibration

Internal Standards	R.T.	QIon	Response	Conc	Units	Dev(Min)
1) 1,4-Difluorobenzene	8.85	114	287144	25.00	ug/L	0.00
28) Chlorobenzene-d5	11.63	117	276968	25.00	ug/L	0.00
60) 1,4-Dichlorobenzene-d4	13.56	152	133905	25.00	ug/L	0.00

System Monitoring Compounds

4) Vinyl Chloride-d3	2.36	65	95635	20.51	ug/L	0.00
Spiked Amount	25.000	Range	30 - 150	Recovery	=	82.04%
7) Chloroethane-d5	2.90	69	82189	21.59	ug/L	0.00
Spiked Amount	25.000	Range	30 - 150	Recovery	=	86.36%
10) 1,1-Dichloroethene-d2	4.02	63	175333	21.18	ug/L	0.00
Spiked Amount	25.000	Range	45 - 110	Recovery	=	84.72%
20) 2-Butanone-d5	7.09	46	50236	51.07	ug/L	0.00
Spiked Amount	50.000	Range	20 - 135	Recovery	=	102.14%
24) Chloroform-d	7.65	84	193066	24.12	ug/L	0.00
Spiked Amount	25.000	Range	40 - 150	Recovery	=	96.48%
26) 1,2-Dichloroethane-d4	8.31	65	110949	24.37	ug/L	0.00
Spiked Amount	25.000	Range	70 - 130	Recovery	=	97.48%
29) Benzene-d6	8.27	84	368694	22.33	ug/L	0.00
Spiked Amount	25.000	Range	20 - 135	Recovery	=	89.32%
33) 1,2-Dichloropropane-d6	9.27	67	111238	22.75	ug/L	0.00
Spiked Amount	25.000	Range	70 - 120	Recovery	=	91.00%
37) Toluene-d8	10.32	98	347637	22.62	ug/L	0.00
Spiked Amount	25.000	Range	30 - 130	Recovery	=	90.48%
38) trans-1,3-Dichloropropene-	10.58	79	48730	22.50	ug/L	0.00
Spiked Amount	25.000	Range	30 - 135	Recovery	=	90.00%
39) 2-Hexanone-d5	10.93	63	39588	49.69	ug/L	0.00
Spiked Amount	50.000	Range	20 - 135	Recovery	=	99.38%
48) 1,1,2,2-Tetrachloroethane-	12.69	84	91670	24.45	ug/L	0.00
Spiked Amount	25.000	Range	45 - 120	Recovery	=	97.80%
61) 1,2-Dichlorobenzene-d4	13.85	152	124380	23.96	ug/L	0.00
Spiked Amount	25.000	Range	75 - 120	Recovery	=	95.84%

Target Compounds

Target Compounds	R.T.	QIon	Response	Conc	Units	Ovalue
2) Dichlorodifluoromethane	2.01	85	58700	21.681	ug/L	94
3) Chloromethane	2.21	50	62066	21.303	ug/L	99
5) Vinyl chloride	2.37	62	102898	23.580	ug/L	99
6) Bromomethane	2.79	94	73448	25.403	ug/L	99
8) Chloroethane	2.93	64	67884	24.933	ug/L	97
9) Trichlorofluoromethane	3.26	101	68614	21.502	ug/L	98
11) 1,1,2-Trichloro-1,2,2-trif	4.06	101	83007	23.993	ug/L	100
12) 1,1-Dichloroethene	4.04	96	80697	24.163	ug/L	90
13) Acetone	4.13	43	34946	42.392	ug/L	98
14) Carbon disulfide	4.39	76	251430	24.244	ug/L	97
15) Methyl Acetate	4.68	43	41804	28.307	ug/L	99
16) Methylene chloride	4.92	84	103992	24.682	ug/L	99
17) Methyl tert-butyl Ether	5.43	73	144336	28.206	ug/L	99
18) trans-1,2-Dichloroethene	5.43	96	93797	26.163	ug/L	99
19) 1,1-Dichloroethane	6.22	63	171553	26.539	ug/L	99
21) 2-Butanone	7.18	43	53317	52.318	ug/L	99
22) cis-1,2-Dichloroethene	7.17	96	102259	27.592	ug/L	99

Data Path : Z:\VOASRV\HPCHEM1\MSVOA W\DATA\VW062920\
 Data File : VW015770.D
 Acq On : 29 Jun 2020 18:44
 Operator : SY/VA
 Sample : VSTDCCC025EC
 Misc : 5.00G/10ML/MSVOA W/SOIL
 ALS Vial : 1 Sample Multiplier: 1

Instrument :
 MSVOA_W
 ClientSampleId :
 VSTD02517

Quant Time: Jun 30 03:07:23 2020
 Quant Method : Z:\VOASRV\HPCHEM1\MSVOA_W\METHOD\SOM2WLM062920S.M
 Quant Title : VOC Analysis
 QLast Update : Tue Jun 30 03:03:23 2020
 Response via : Initial Calibration

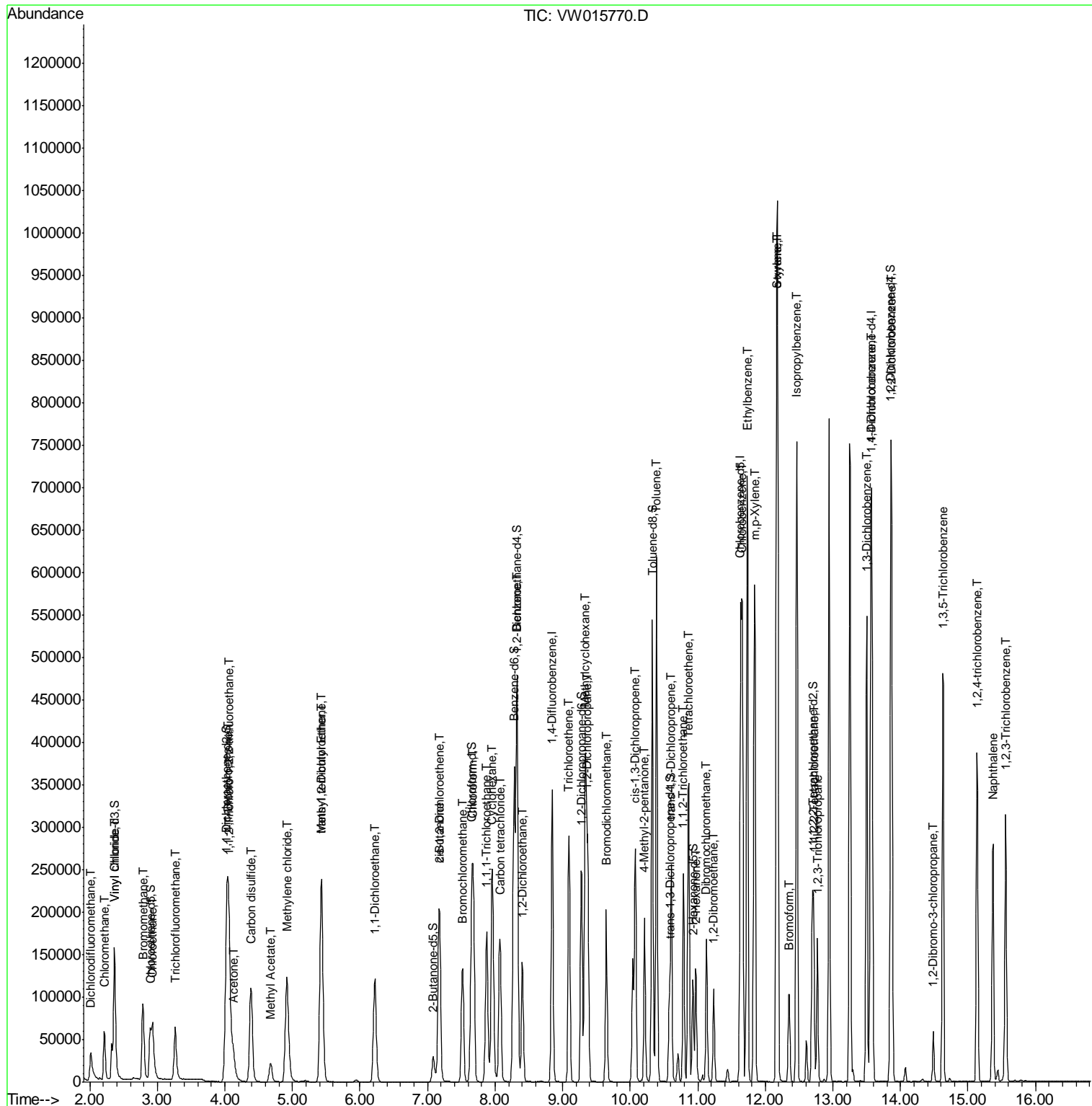
Internal Standards	R.T.	QIon	Response	Conc	Units	Dev(Min)
23) Bromochloromethane	7.52	128	46570	28.529	ug/L	94
25) Chloroform	7.68	83	181509	27.800	ug/L	100
27) 1,2-Dichloroethane	8.40	62	128964	28.566	ug/L	99
30) Cyclohexane	7.96	56	141259	22.614	ug/L	100
31) 1,1,1-Trichloroethane	7.88	97	145136	24.211	ug/L	100
32) Carbon tetrachloride	8.07	117	127437	23.521	ug/L	100
34) Benzene	8.32	78	391123	25.713	ug/L	100
35) Trichloroethene	9.09	95	101053	24.913	ug/L	100
36) Methylcyclohexane	9.34	83	157331	22.489	ug/L	99
40) 1,2-Dichloropropane	9.37	63	98510	26.609	ug/L	99
41) Bromodichloromethane	9.65	83	130311	27.091	ug/L	99
42) cis-1,3-Dichloropropene	10.07	75	151985	26.299	ug/L	99
43) 4-Methyl-2-pentanone	10.21	43	122286	56.615	ug/L	99
44) Toluene	10.39	91	429105	25.966	ug/L	98
45) trans-1,3-Dichloropropene	10.61	75	133107	26.462	ug/L	99
46) 1,1,2-Trichloroethane	10.79	97	74411	27.842	ug/L	99
47) Tetrachloroethene	10.87	164	78408	24.056	ug/L	94
49) 2-Hexanone	10.97	43	82879	54.470	ug/L	99
50) Dibromochloromethane	11.13	129	86057	27.508	ug/L	91
51) 1,2-Dibromoethane	11.24	107	71857	27.737	ug/L	99
52) Chlorobenzene	11.66	112	275094	26.484	ug/L	98
53) Ethylbenzene	11.73	91	483681	25.887	ug/L	100
54) m,p-Xylene	11.84	106	185232	26.523	ug/L	97
55) o-xylene	12.16	106	179092	26.832	ug/L	98
56) Styrene	12.18	104	313568	27.676	ug/L	99
57) Isopropylbenzene	12.46	105	473296	25.672	ug/L	99
58) 1,1,2,2-Tetrachloroethane	12.72	83	89998	28.299	ug/L	98
59) 1,2,3-Trichloropropane	12.77	75	66112	27.525	ug/L	99
62) Bromoform	12.35	173	46782	27.234	ug/L	99
63) 1,3-Dichlorobenzene	13.50	146	212332	26.732	ug/L	98
64) 1,4-Dichlorobenzene	13.58	146	215358	27.216	ug/L	98
65) 1,2-Dichlorobenzene	13.87	146	201559	28.700	ug/L	98
66) 1,2-Dibromo-3-chloropropan	14.49	75	14165	28.160	ug/L	98
67) 1,3,5-Trichlorobenzene	14.63	180	145435	26.699	ug/L	100
68) 1,2,4-trichlorobenzene	15.13	180	120313	27.372	ug/L	99
69) Naphthalene	15.37	128	235442	29.278	ug/L	99
70) 1,2,3-Trichlorobenzene	15.56	180	107348	28.249	ug/L	99

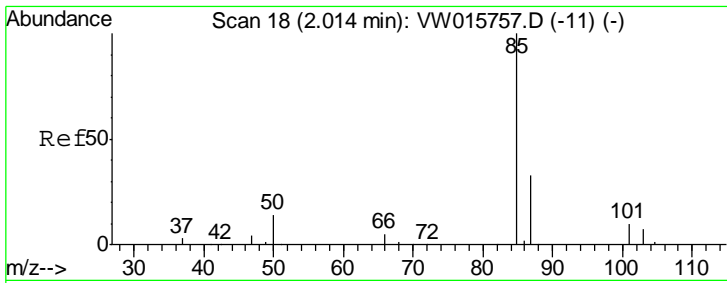
(#) = qualifier out of range (m) = manual integration (+) = signals summed

Data Path : Z:\VOASRV\HPCHEM1\MSVOA W\DATA\VW062920\
 Data File : VW015770.D
 Acq On : 29 Jun 2020 18:44
 Operator : SY/VA
 Sample : VSTDCCC025EC
 Misc : 5.00G/10ML/MSVOA W/SOIL
 ALS Vial : 1 Sample Multiplier: 1

Instrument :
 MSVOA_W
 Client Sampled :
 VSTD02517

Quant Time: Jun 30 03:07:23 2020
 Quant Method : Z:\VOASRV\HPCHEM1\MSVOA_W\METHOD\SOM2WLM062920S.M
 Quant Title : VOC Analysis
 QLast Update : Tue Jun 30 03:03:23 2020
 Response via : Initial Calibration

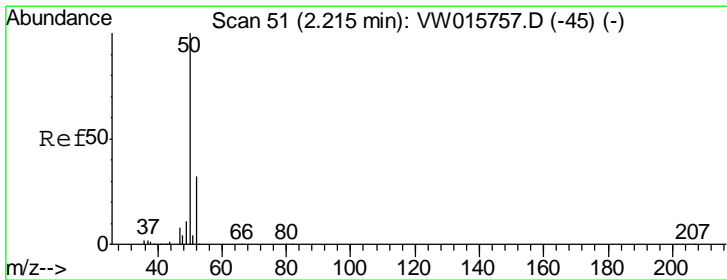
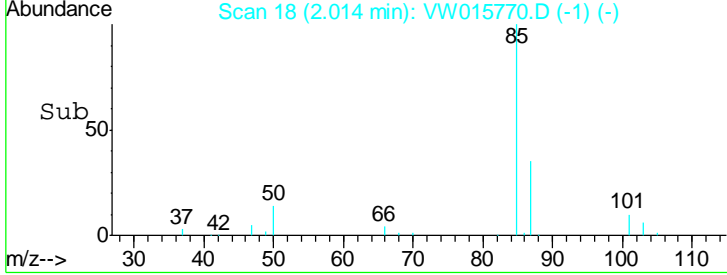
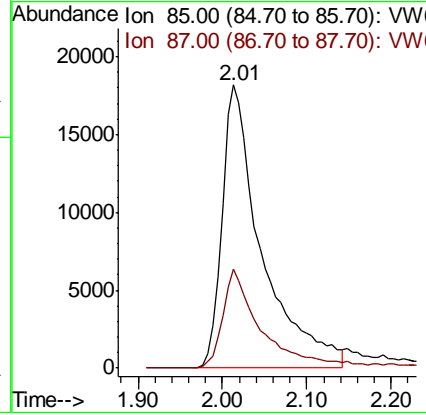
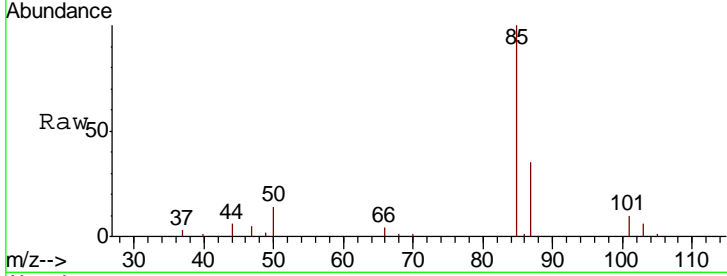




#2
 Dichlorodifluoromethane
 Concen: 21.681 ug/L
 RT: 2.01 min Scan# 18
 Delta R.T. -0.00 min
 Lab File: VW015770.D
 Acq: 29 Jun 2020 18:44

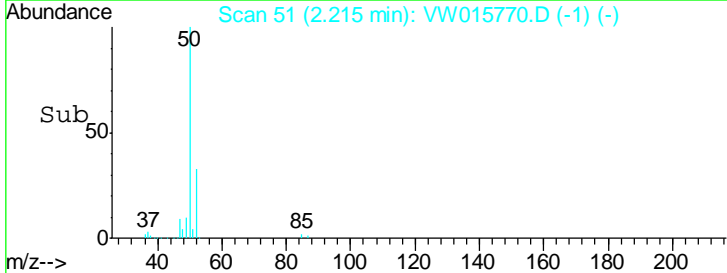
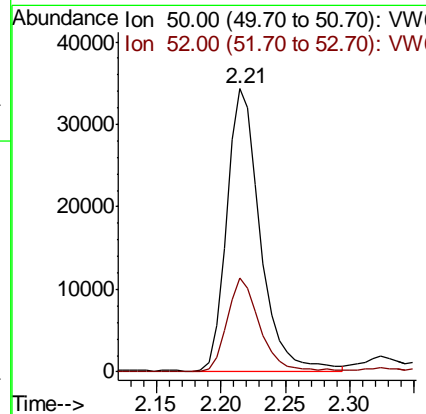
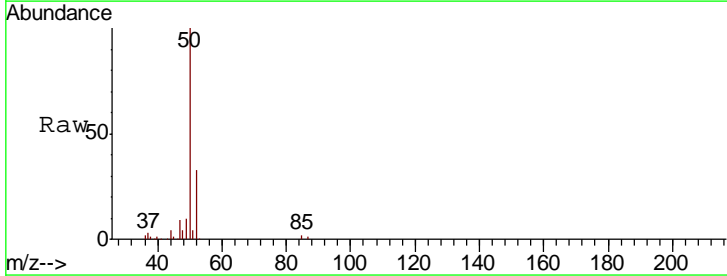
Instrument :
 MSVOA_W
ClientSampled :
 VSTD02517

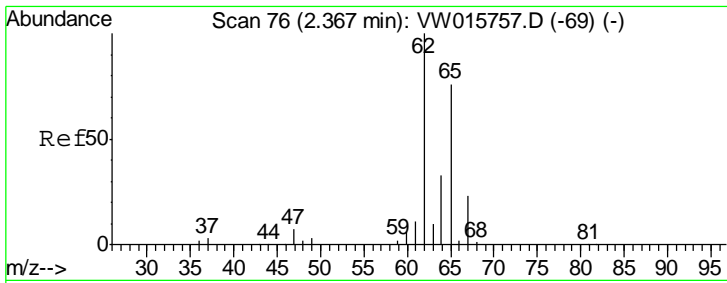
Tgt Ion: 85 Resp: 58700
 Ion Ratio Lower Upper
 85 100
 87 33.1 21.1 39.1



#3
 Chloromethane
 Concen: 21.303 ug/L
 RT: 2.21 min Scan# 51
 Delta R.T. -0.00 min
 Lab File: VW015770.D
 Acq: 29 Jun 2020 18:44

Tgt Ion: 50 Resp: 62066
 Ion Ratio Lower Upper
 50 100
 52 33.2 23.7 44.1

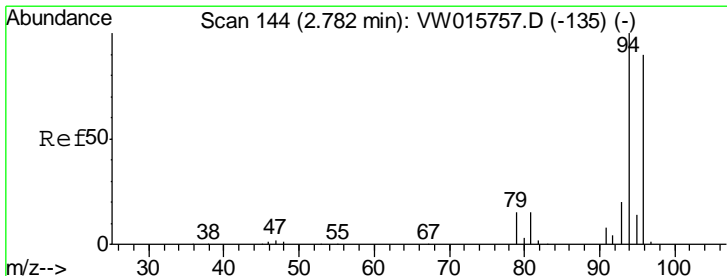
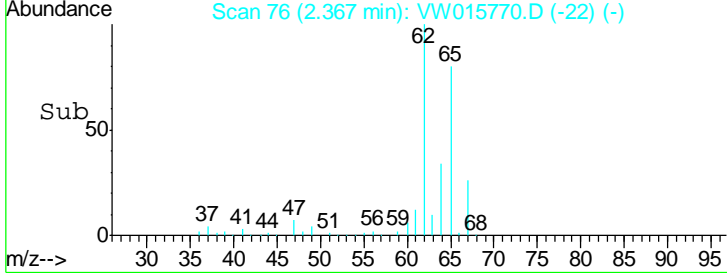
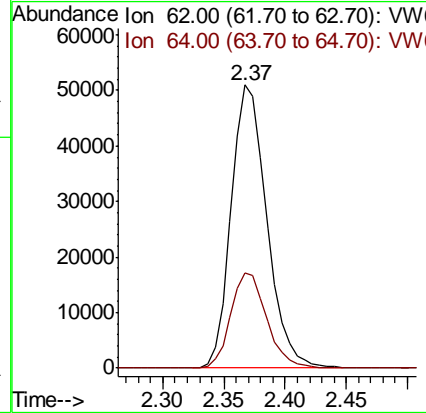
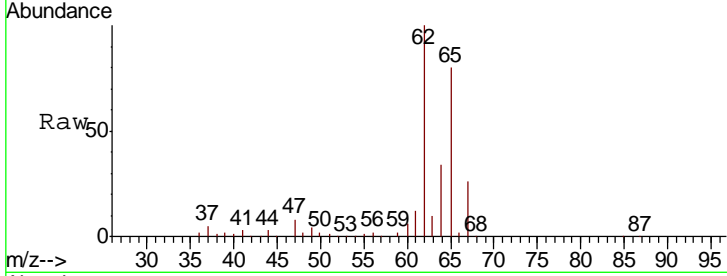




#5
 Vinyl chloride
 Concen: 23.580 ug/L
 RT: 2.37 min Scan# 76
 Delta R.T. -0.00 min
 Lab File: VW015770.D
 Acq: 29 Jun 2020 18:44

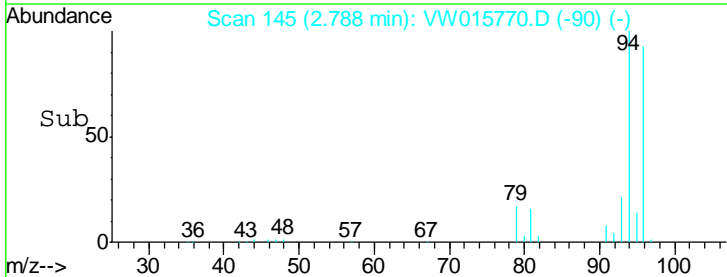
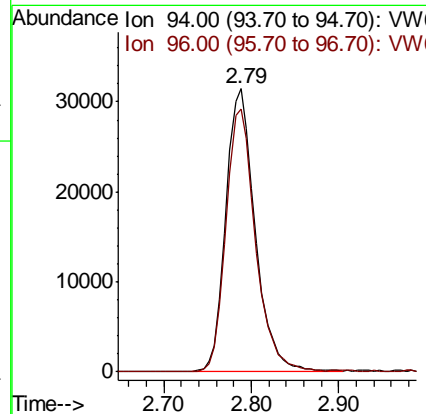
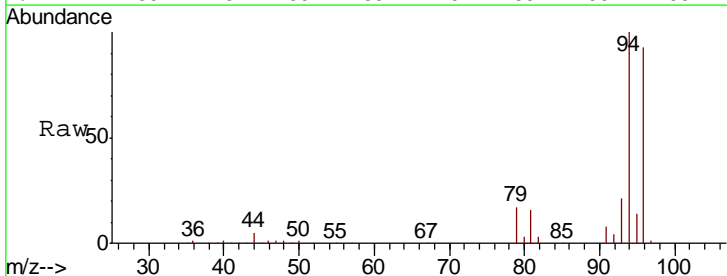
Instrument :
 MSVOA_W
ClientSampled :
 VSTD02517

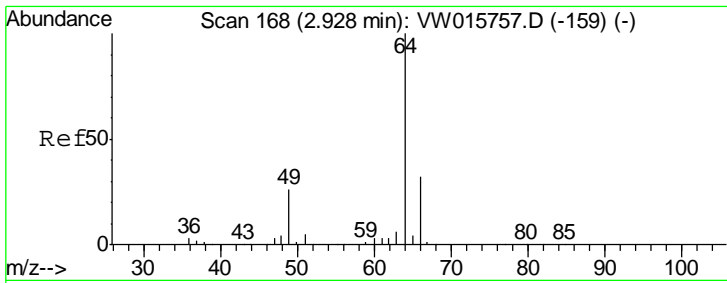
Tgt Ion	Resp	Lower	Upper
62	102898		
64	33.7	23.2	43.0



#6
 Bromomethane
 Concen: 25.403 ug/L
 RT: 2.79 min Scan# 145
 Delta R.T. 0.01 min
 Lab File: VW015770.D
 Acq: 29 Jun 2020 18:44

Tgt Ion	Resp	Lower	Upper
94	73448		
96	93.4	9.4	179.2

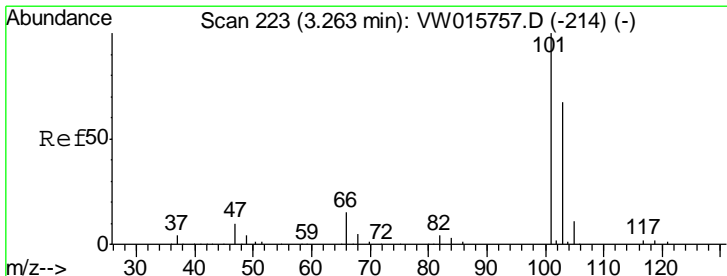
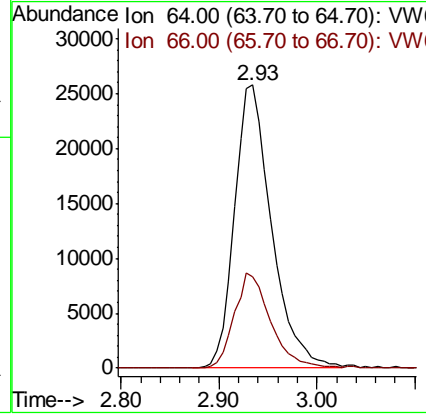
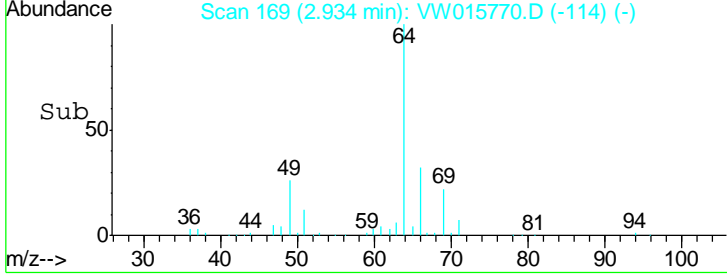
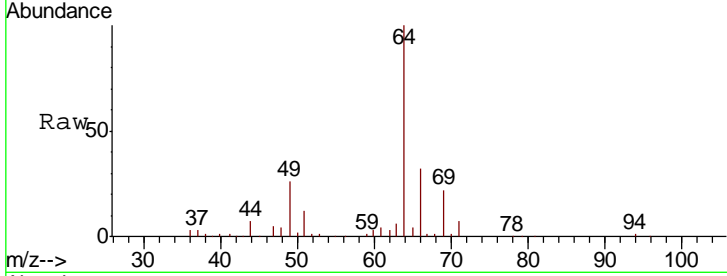




#8
 Chloroethane
 Concen: 24.933 ug/L
 RT: 2.93 min Scan# 169
 Delta R.T. 0.01 min
 Lab File: VW015770.D
 Acq: 29 Jun 2020 18:44

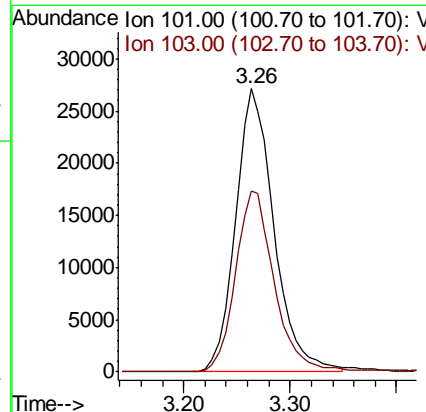
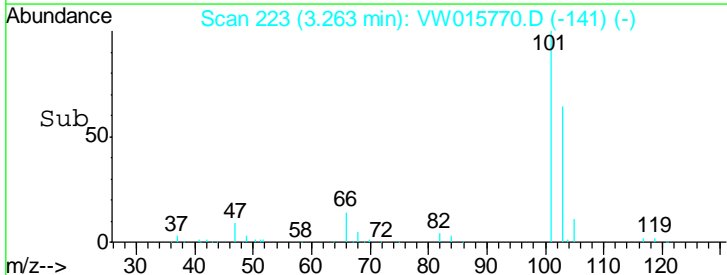
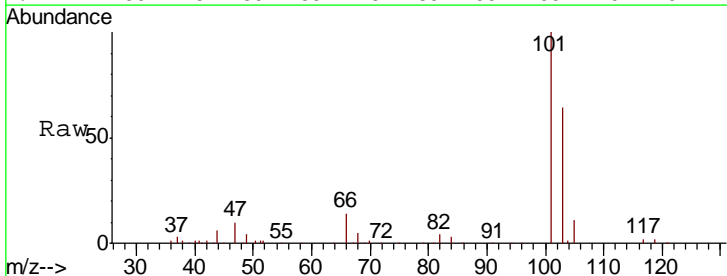
Instrument :
 MSVOA_W
ClientSampled :
 VSTD02517

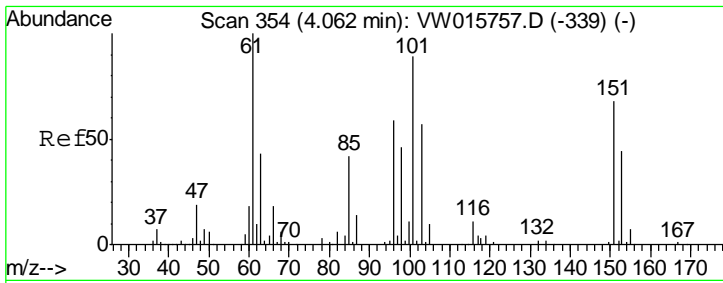
Tgt Ion: 64 Resp: 67884
 Ion Ratio Lower Upper
 64 100
 66 32.4 21.6 40.2



#9
 Trichlorofluoromethane
 Concen: 21.502 ug/L
 RT: 3.26 min Scan# 223
 Delta R.T. -0.00 min
 Lab File: VW015770.D
 Acq: 29 Jun 2020 18:44

Tgt Ion: 101 Resp: 68614
 Ion Ratio Lower Upper
 101 100
 103 64.6 44.4 82.4

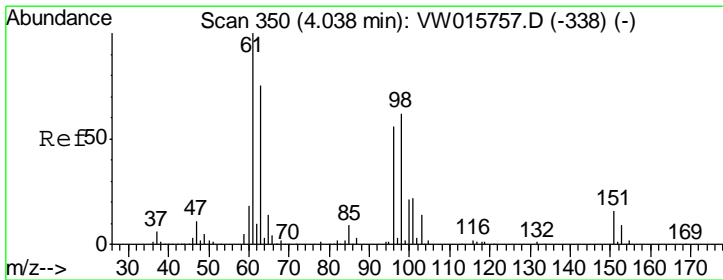
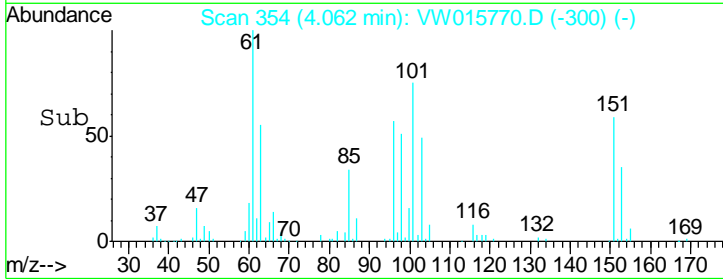
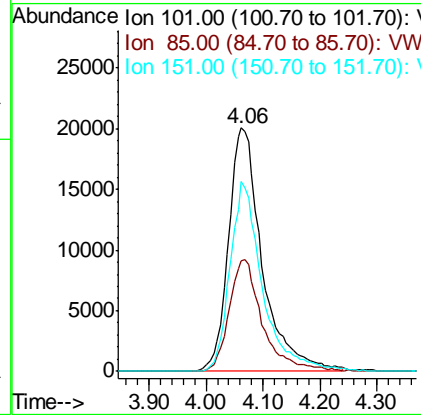
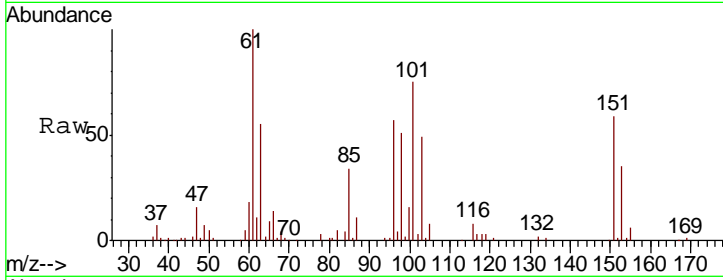




#11
 1,1,2-Trichloro-1,2,2-trifluoroethane
 Concen: 23.993 ug/L
 RT: 4.06 min Scan# 354
 Delta R.T. -0.00 min
 Lab File: VW015770.D
 Acq: 29 Jun 2020 18:44

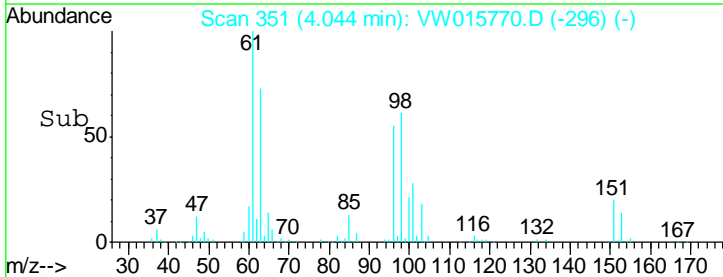
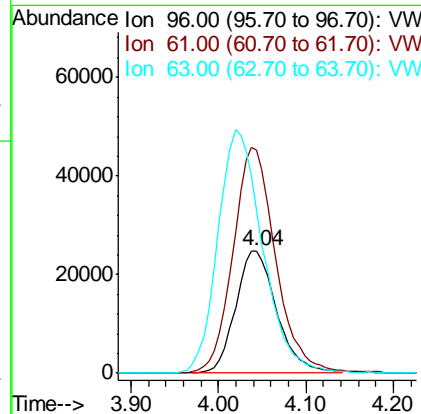
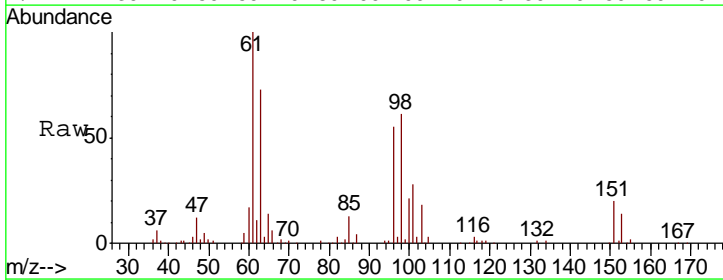
Instrument :
 MSVOA_W
ClientSampled :
 VSTD02517

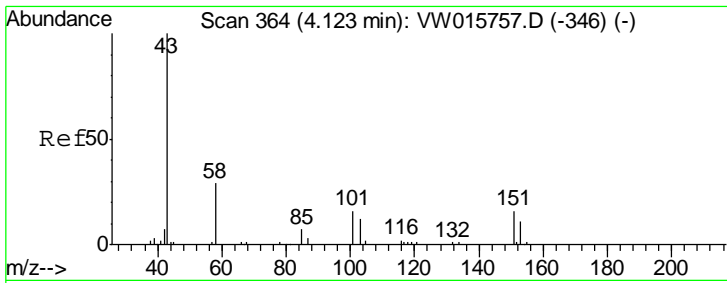
Tgt Ion	Resp	Lower	Upper
101	83007		
85	43.3	34.4	51.6
151	73.7	58.6	88.0



#12
 1,1-Dichloroethene
 Concen: 24.163 ug/L
 RT: 4.04 min Scan# 351
 Delta R.T. 0.01 min
 Lab File: VW015770.D
 Acq: 29 Jun 2020 18:44

Tgt Ion	Resp	Lower	Upper
96	80697		
61	182.7	128.0	237.6
63	133.0	112.3	208.7

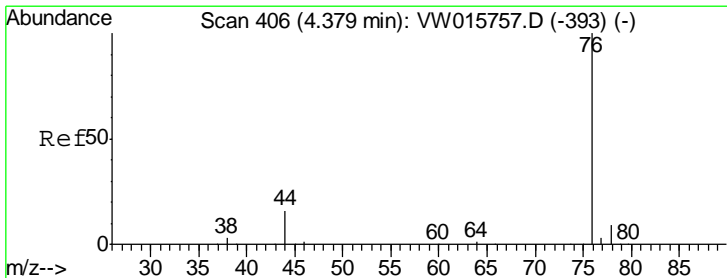
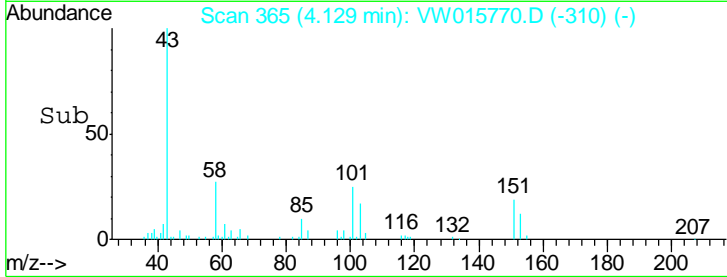
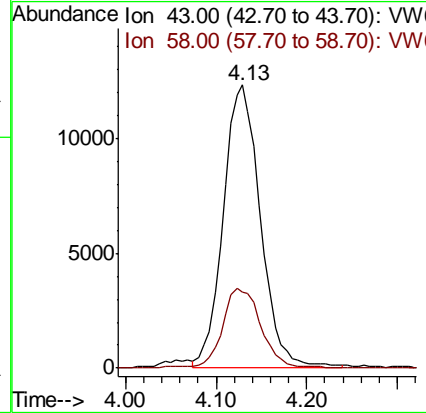
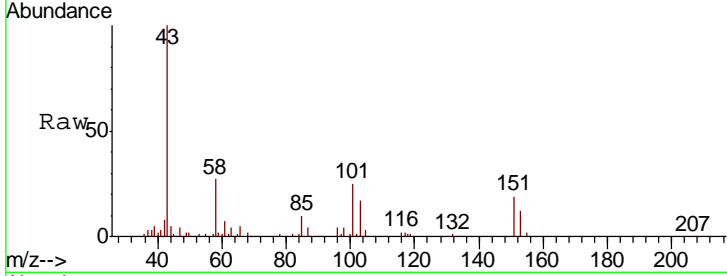




#13
 Acetone
 Concen: 42.392 ug/L
 RT: 4.13 min Scan# 365
 Delta R.T. 0.01 min
 Lab File: VW015770.D
 Acq: 29 Jun 2020 18:44

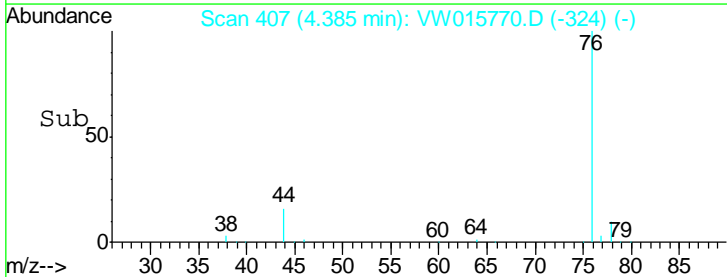
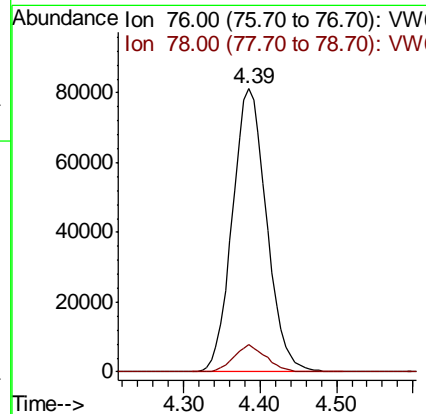
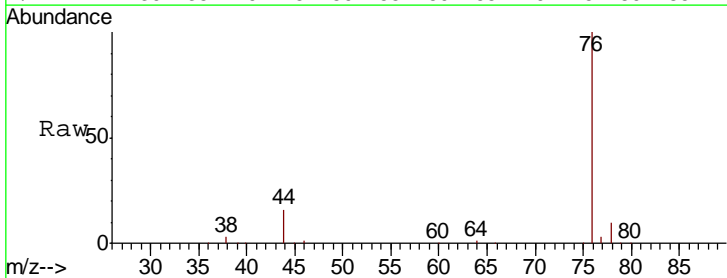
Instrument :
 MSVOA_W
 ClientSampled :
 VSTD02517

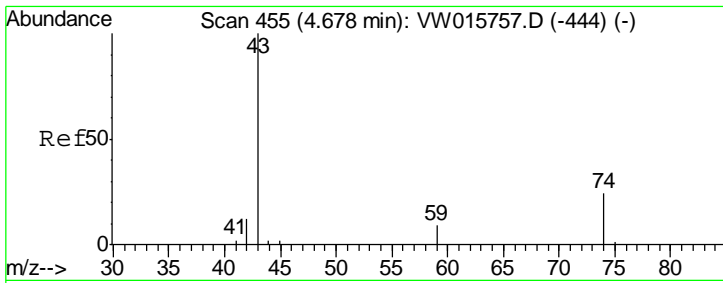
Tgt Ion: 43 Resp: 34946
 Ion Ratio Lower Upper
 43 100
 58 28.4 0.0 59.4



#14
 Carbon disulfide
 Concen: 24.244 ug/L
 RT: 4.39 min Scan# 407
 Delta R.T. 0.01 min
 Lab File: VW015770.D
 Acq: 29 Jun 2020 18:44

Tgt Ion: 76 Resp: 251430
 Ion Ratio Lower Upper
 76 100
 78 9.5 6.9 10.3

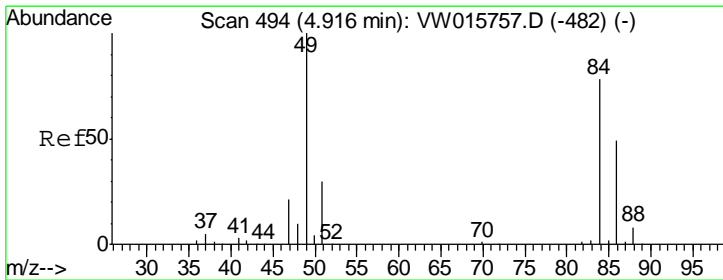
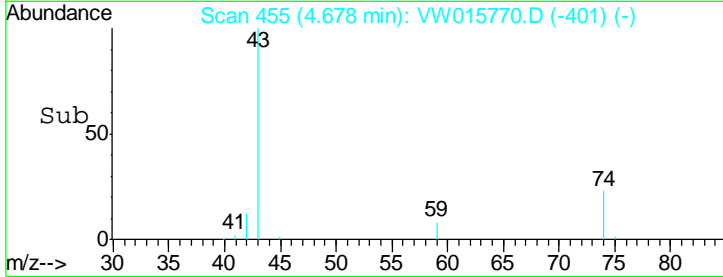
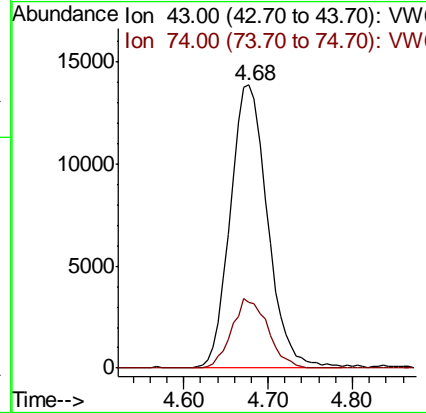
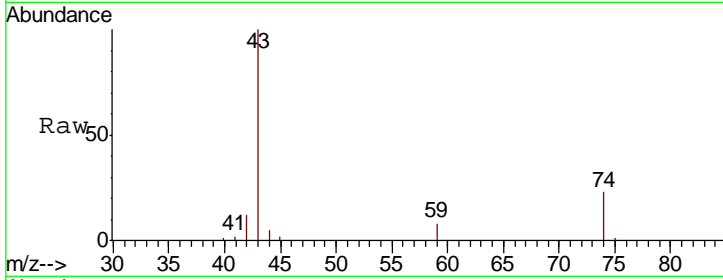




#15
 Methyl Acetate
 Concen: 28.307 ug/L
 RT: 4.68 min Scan# 455
 Delta R.T. -0.00 min
 Lab File: VW015770.D
 Acq: 29 Jun 2020 18:44

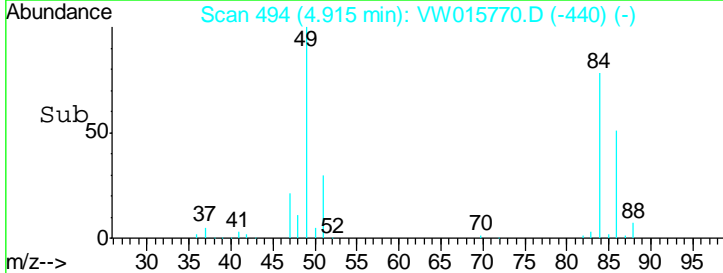
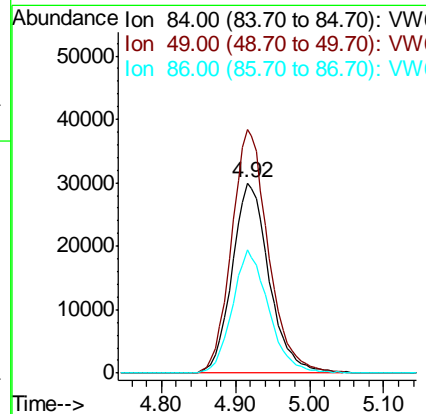
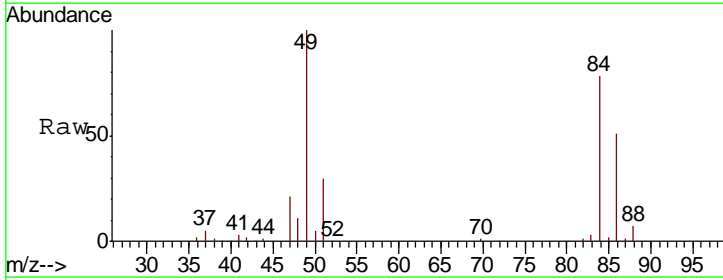
Instrument :
 MSVOA_W
 ClientSampled :
 VSTD02517

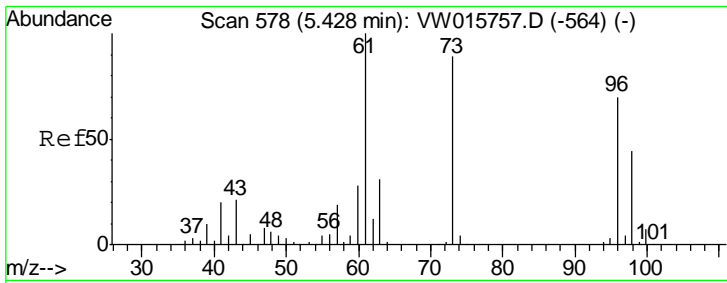
Tgt Ion	Resp	Lower	Upper
43	41804		
74	23.7	18.4	27.6



#16
 Methylene chloride
 Concen: 24.682 ug/L
 RT: 4.92 min Scan# 494
 Delta R.T. -0.00 min
 Lab File: VW015770.D
 Acq: 29 Jun 2020 18:44

Tgt Ion	Resp	Lower	Upper
84	103992		
49	127.8	90.0	167.2
86	65.0	44.0	81.8

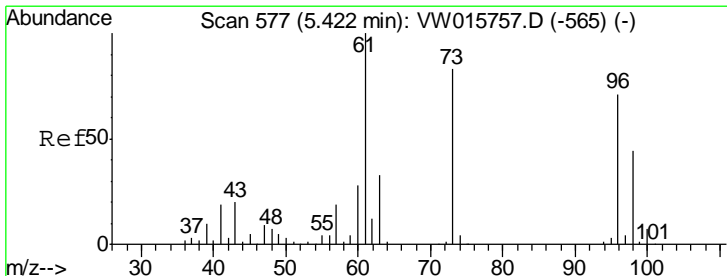
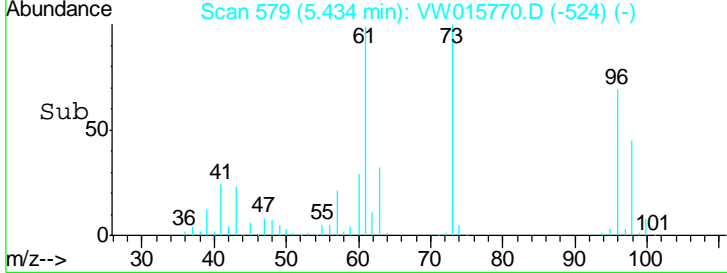
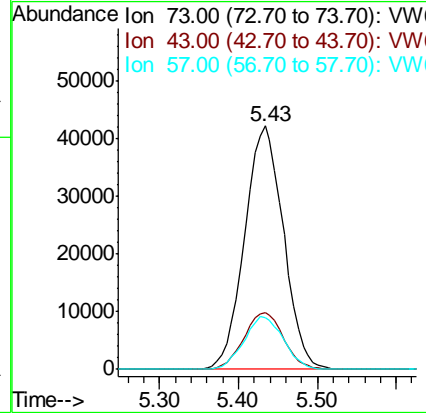
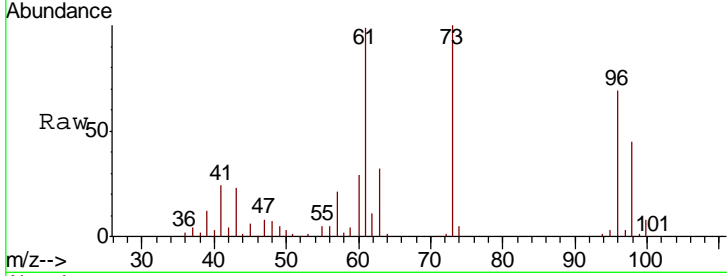




#17
 Methyl tert-butyl Ether
 Concen: 28.206 ug/L
 RT: 5.43 min Scan# 579
 Delta R.T. 0.01 min
 Lab File: VW015770.D
 Acq: 29 Jun 2020 18:44

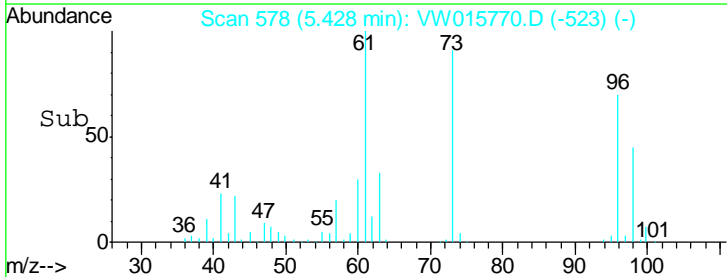
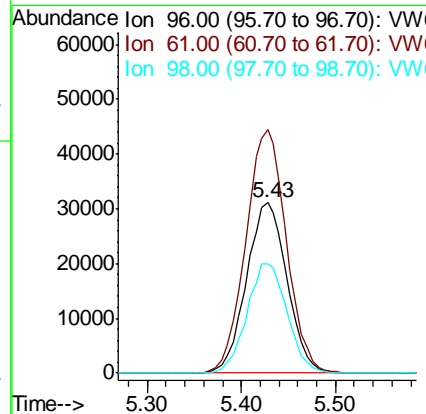
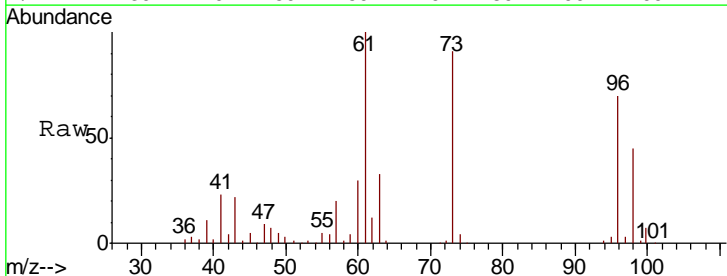
Instrument :
 MSVOA_W
ClientSampled :
 VSTD02517

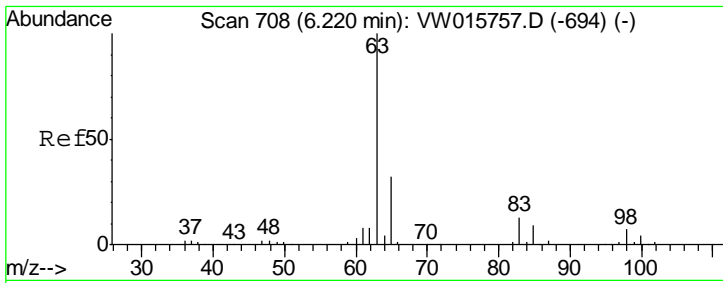
Tgt Ion	Resp	Lower	Upper
73	144336		
43	23.9	19.0	28.4
57	22.1	17.3	25.9



#18
 trans-1,2-Dichloroethene
 Concen: 26.163 ug/L
 RT: 5.43 min Scan# 578
 Delta R.T. 0.01 min
 Lab File: VW015770.D
 Acq: 29 Jun 2020 18:44

Tgt Ion	Resp	Lower	Upper
96	93797		
61	142.7	98.5	182.9
98	64.0	44.4	82.4

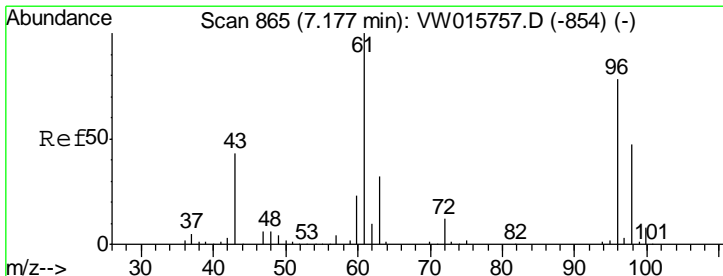
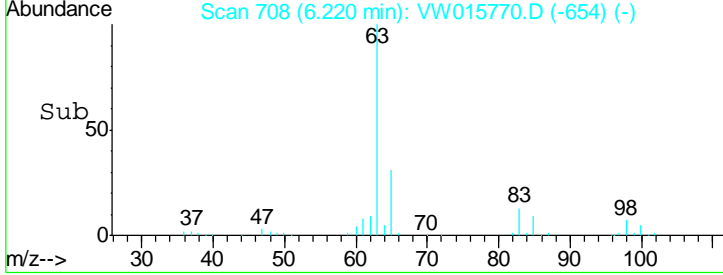
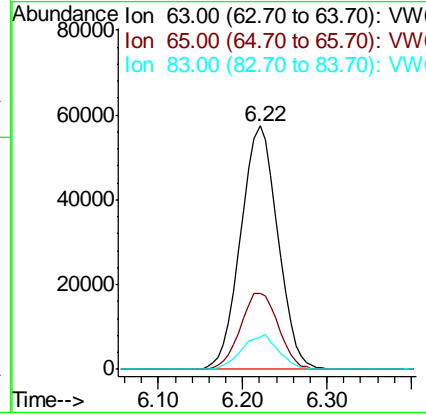
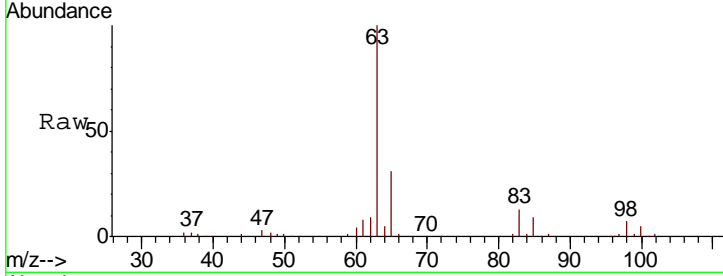




#19
 1,1-Dichloroethane
 Concen: 26.539 ug/L
 RT: 6.22 min Scan# 708
 Delta R.T. -0.00 min
 Lab File: VW015770.D
 Acq: 29 Jun 2020 18:44

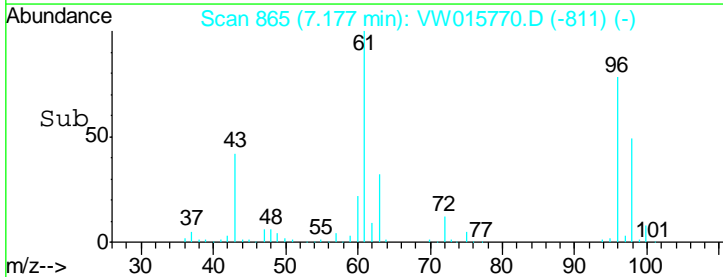
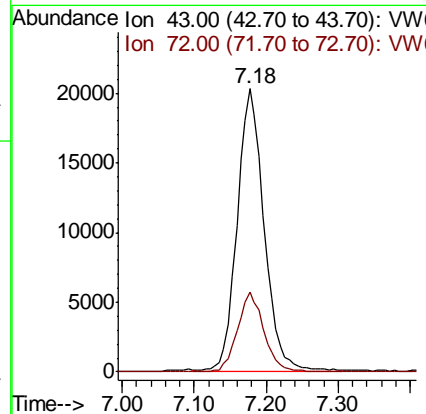
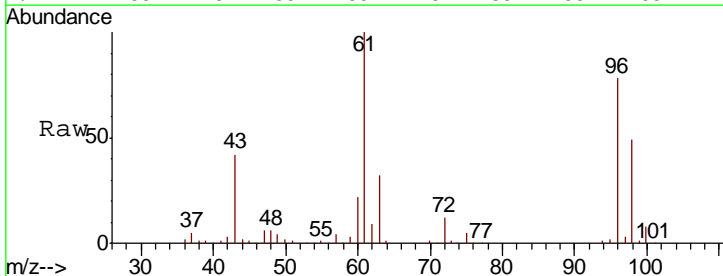
Instrument :
 MSVOA_W
ClientSampled :
 VSTD02517

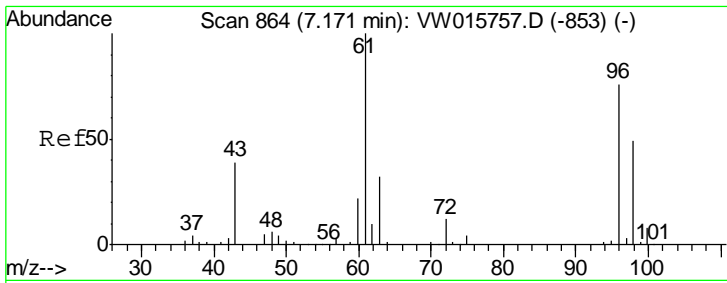
Tgt Ion	Resp	Lower	Upper
63	171553		
65	31.3	22.3	41.3
83	13.5	9.5	17.7



#21
 2-Butanone
 Concen: 52.318 ug/L
 RT: 7.18 min Scan# 865
 Delta R.T. -0.00 min
 Lab File: VW015770.D
 Acq: 29 Jun 2020 18:44

Tgt Ion	Resp	Lower	Upper
43	53317		
43	100		
72	26.8	13.7	41.1

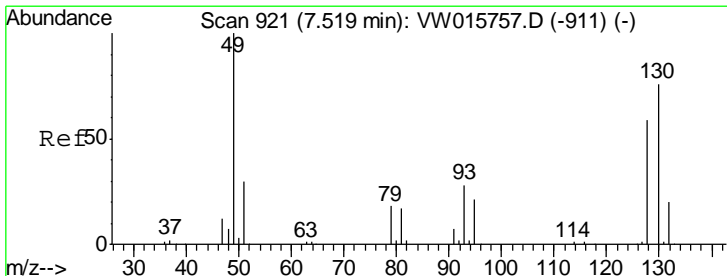
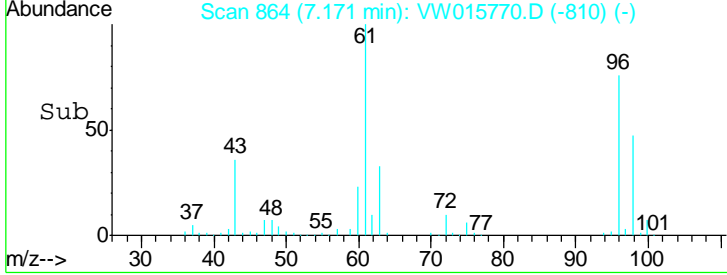
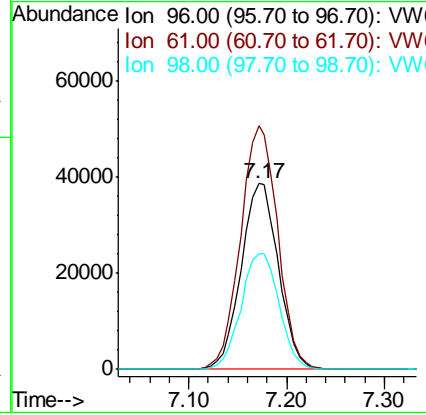
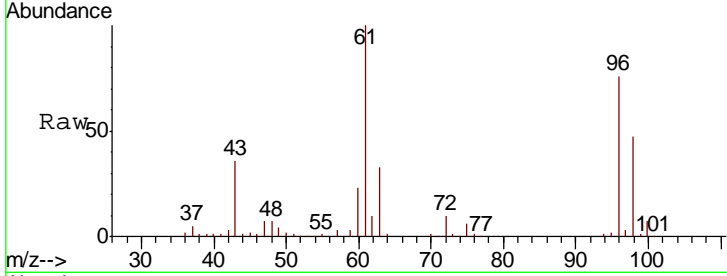




#22
 cis-1,2-Dichloroethene
 Concen: 27.592 ug/L
 RT: 7.17 min Scan# 864
 Delta R.T. -0.00 min
 Lab File: VW015770.D
 Acq: 29 Jun 2020 18:44

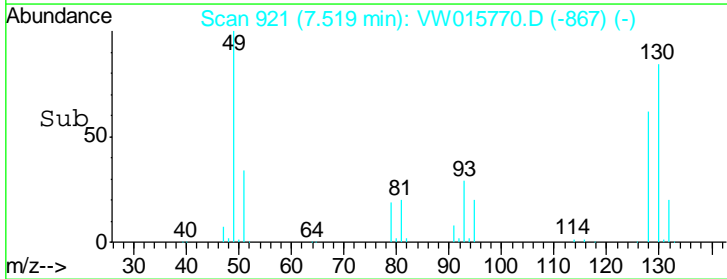
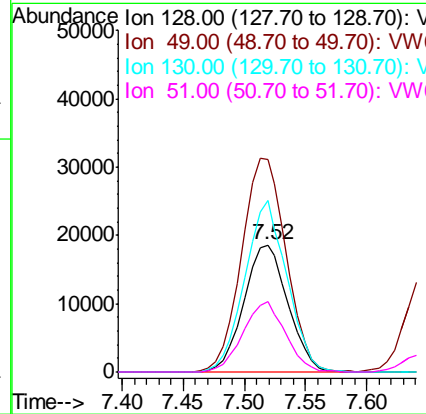
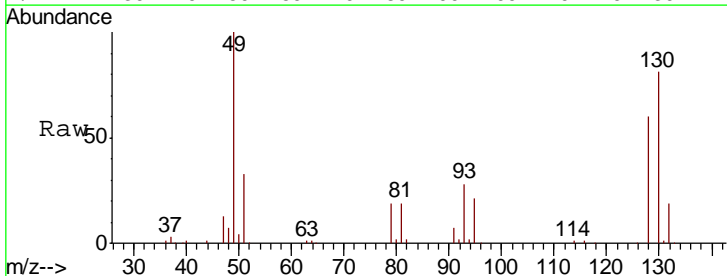
Instrument :
 MSVOA_W
ClientSampled :
 VSTD02517

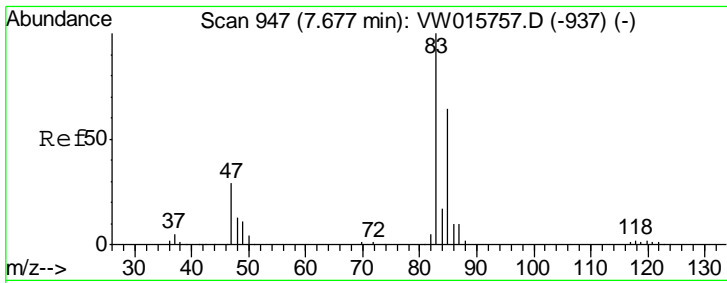
Tgt Ion	Resp	Lower	Upper
96	102259		
61	131.2	90.8	168.6
98	62.1	44.1	81.9



#23
 Bromochloromethane
 Concen: 28.529 ug/L
 RT: 7.52 min Scan# 921
 Delta R.T. -0.00 min
 Lab File: VW015770.D
 Acq: 29 Jun 2020 18:44

Tgt Ion	Resp	Lower	Upper
128	46570		
128	100		
49	167.4	115.0	213.6
130	135.4	85.1	158.1
51	55.1	42.6	64.0

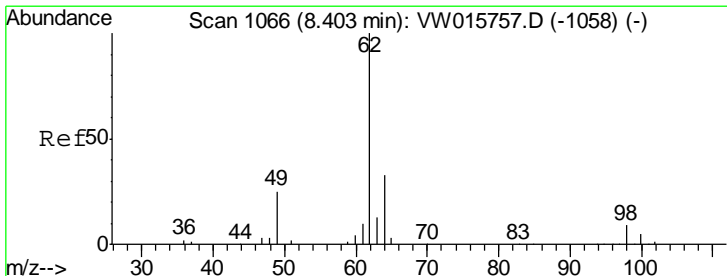
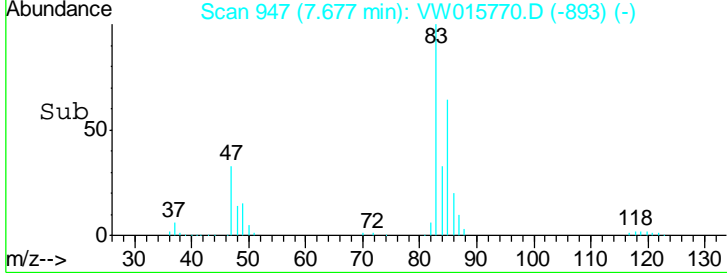
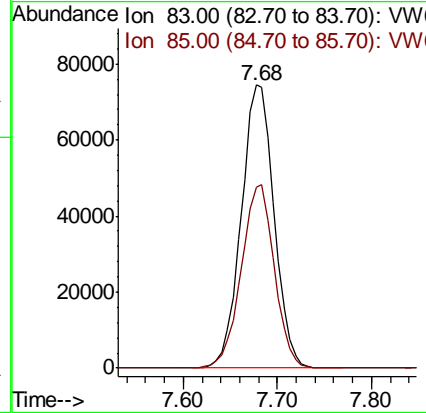
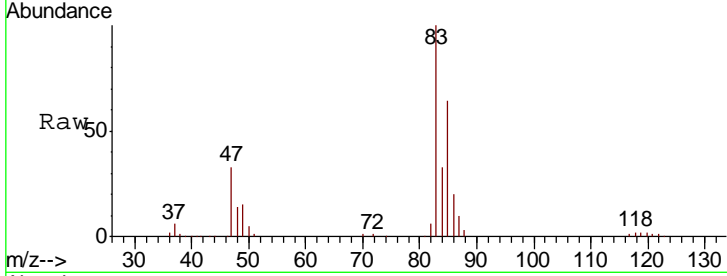




#25
 Chloroform
 Concen: 27.800 ug/L
 RT: 7.68 min Scan# 947
 Delta R.T. -0.00 min
 Lab File: VW015770.D
 Acq: 29 Jun 2020 18:44

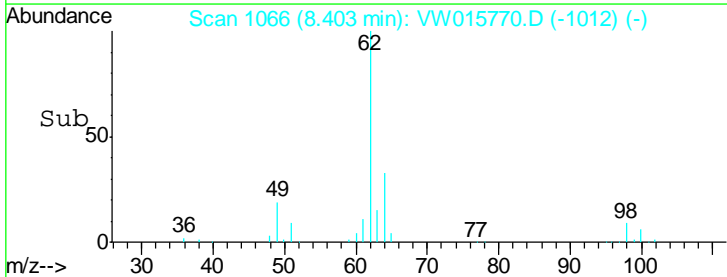
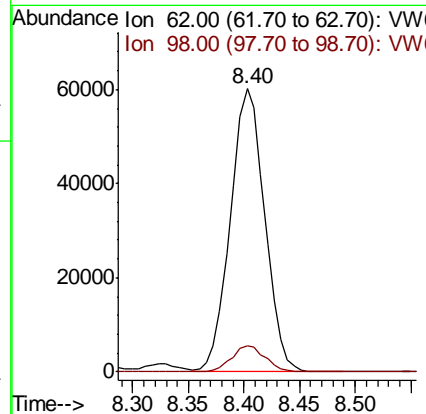
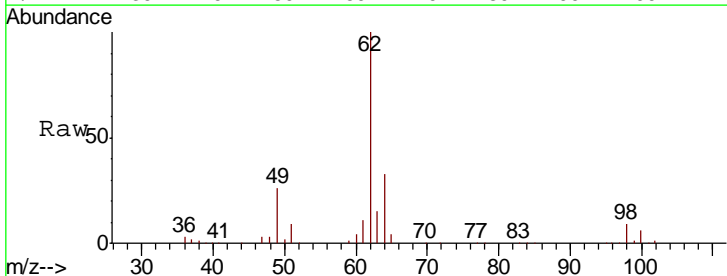
Instrument :
 MSVOA_W
ClientSampled :
 VSTD02517

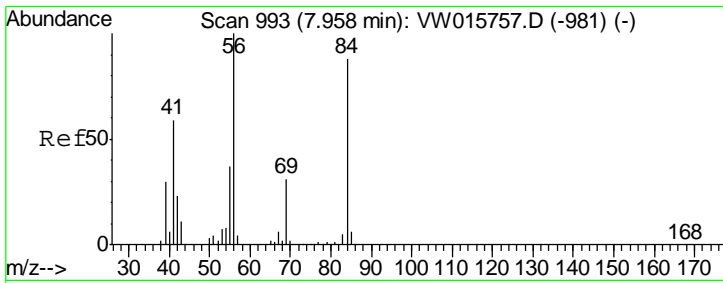
Tgt Ion	Resp	Lower	Upper
83	100		
85	65.3	45.7	84.9



#27
 1,2-Dichloroethane
 Concen: 28.566 ug/L
 RT: 8.40 min Scan# 1066
 Delta R.T. -0.00 min
 Lab File: VW015770.D
 Acq: 29 Jun 2020 18:44

Tgt Ion	Resp	Lower	Upper
62	100		
98	9.2	7.0	10.4

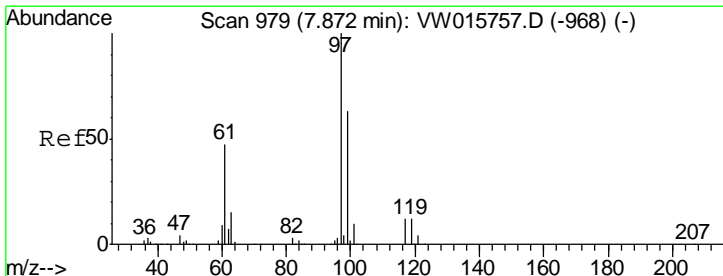
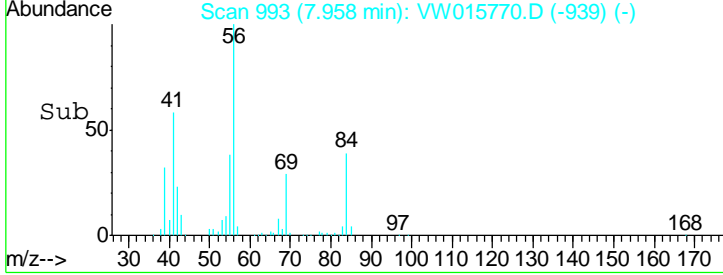
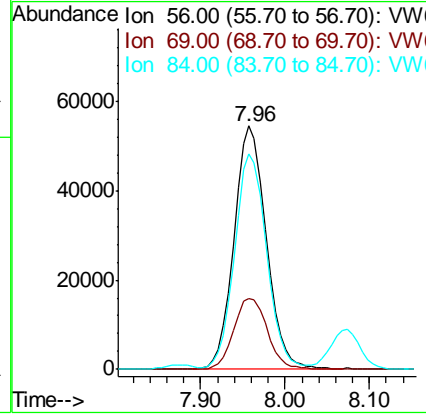
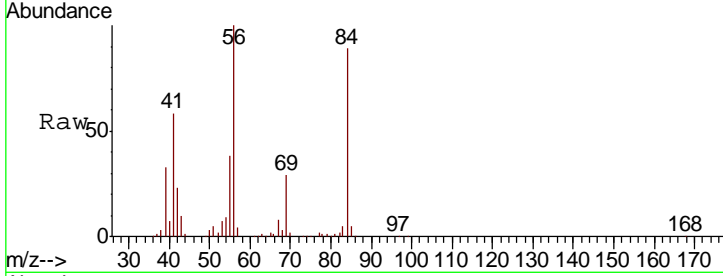




#30
 Cyclohexane
 Concen: 22.614 ug/L
 RT: 7.96 min Scan# 993
 Delta R.T. -0.00 min
 Lab File: VW015770.D
 Acq: 29 Jun 2020 18:44

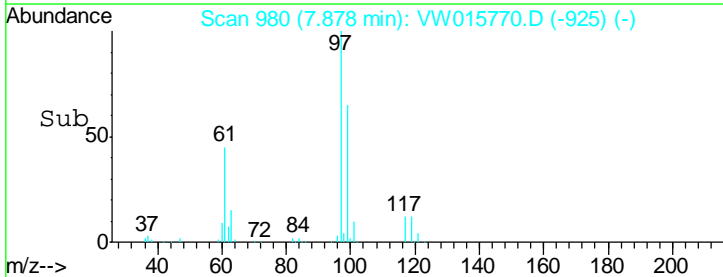
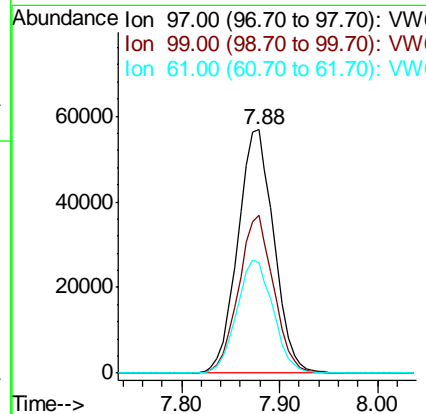
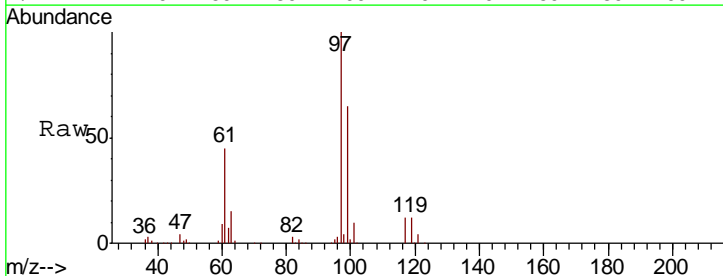
Instrument :
 MSVOA_W
ClientSampled :
 VSTD02517

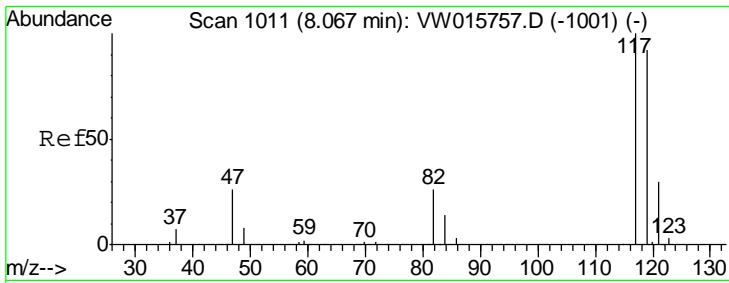
Tgt Ion	Resp	Lower	Upper
56	141259		
69	30.4	24.6	37.0
84	88.9	71.1	106.7



#31
 1,1,1-Trichloroethane
 Concen: 24.211 ug/L
 RT: 7.88 min Scan# 980
 Delta R.T. 0.01 min
 Lab File: VW015770.D
 Acq: 29 Jun 2020 18:44

Tgt Ion	Resp	Lower	Upper
97	145136		
99	63.1	50.5	75.7
61	46.8	37.9	56.9

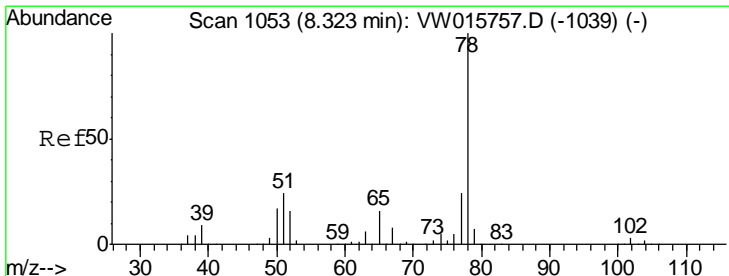
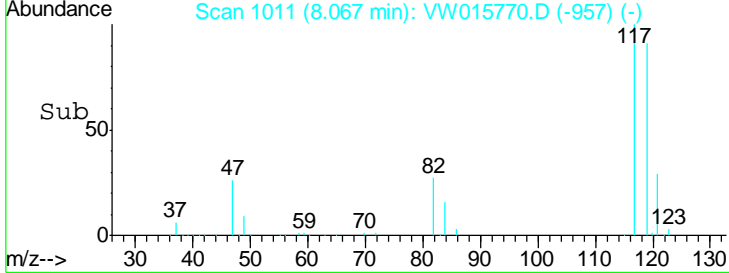
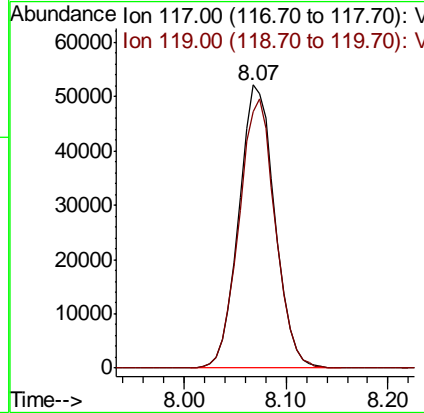
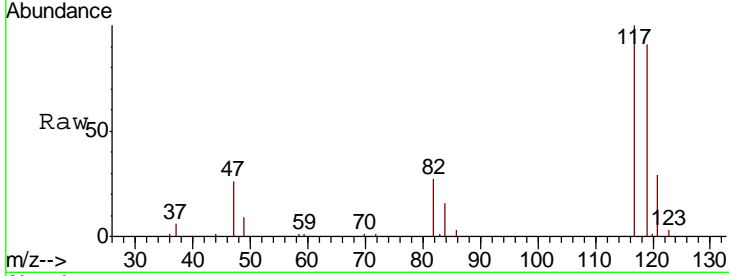




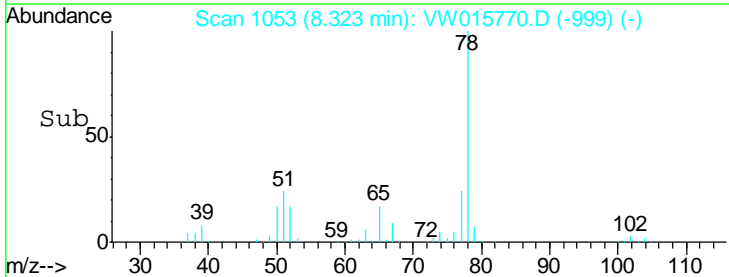
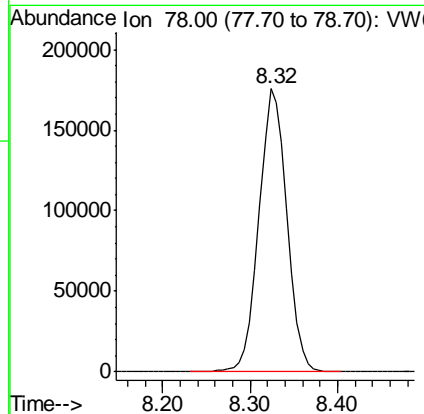
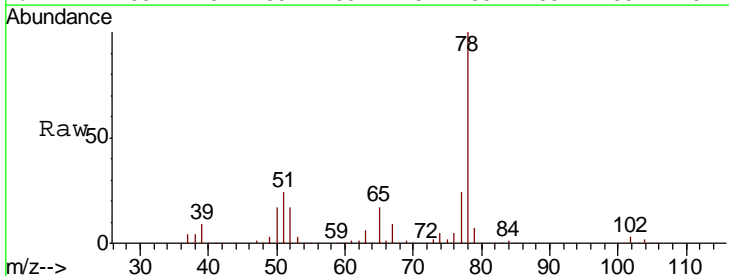
#32
 Carbon tetrachloride
 Concen: 23.521 ug/L
 RT: 8.07 min Scan# 1011
 Delta R.T. -0.00 min
 Lab File: VW015770.D
 Acq: 29 Jun 2020 18:44

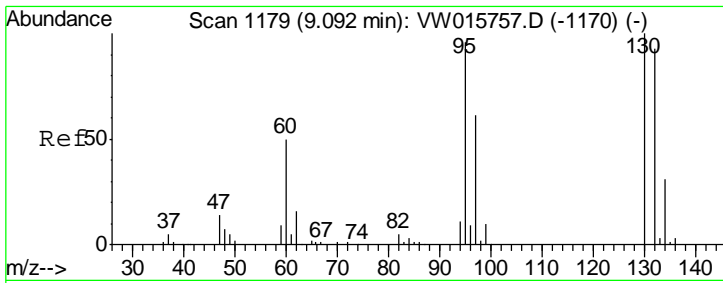
Instrument : MSVOA_W
 ClientSampled : VSTD02517

Tgt Ion: 117 Resp: 127437
 Ion Ratio Lower Upper
 117 100
 119 95.8 77.0 115.4



#34
 Benzene
 Concen: 25.713 ug/L
 RT: 8.32 min Scan# 1053
 Delta R.T. -0.00 min
 Lab File: VW015770.D
 Acq: 29 Jun 2020 18:44
 Tgt Ion: 78 Resp: 391123

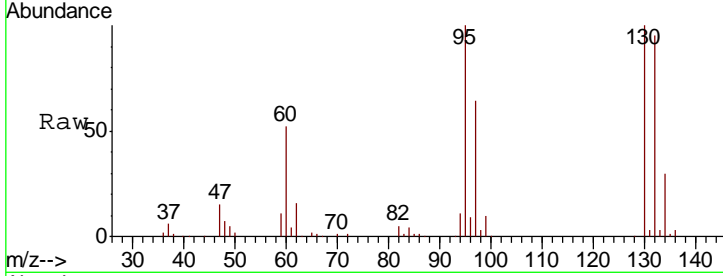




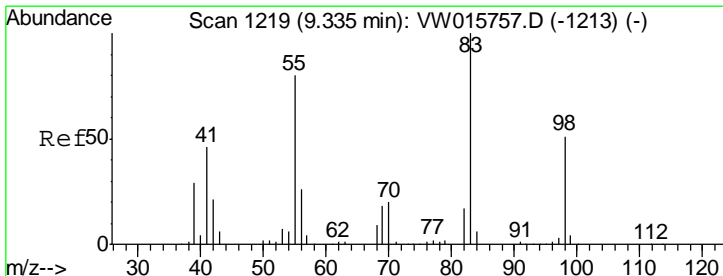
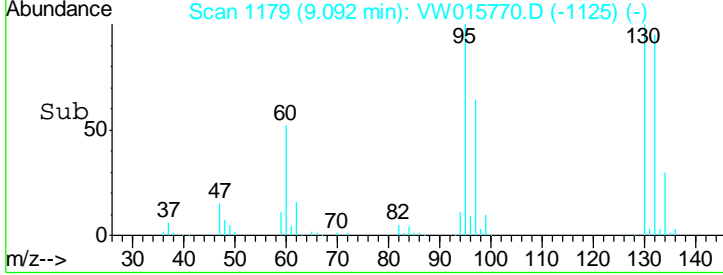
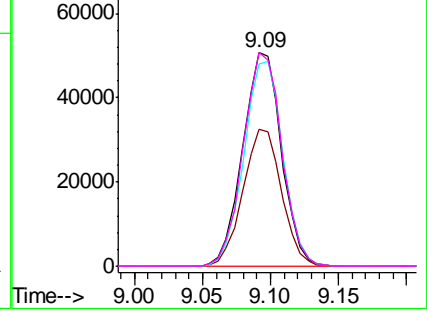
#35
 Trichloroethene
 Concen: 24.913 ug/L
 RT: 9.09 min Scan# 1179
 Delta R.T. -0.00 min
 Lab File: VW015770.D
 Acq: 29 Jun 2020 18:44

Instrument :
 MSVOA_W
 ClientSampled :
 VSTD02517

Tgt Ion	Resp	Lower	Upper
95	101053		
97	64.0	44.9	83.3
132	96.6	67.8	126.0
130	99.8	70.1	130.1

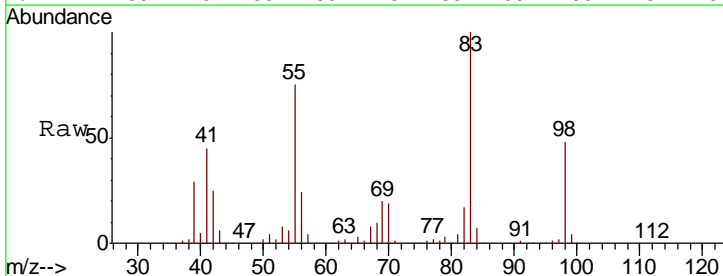


Abundance Ion 95.00 (94.70 to 95.70): VW
 Ion 97.00 (96.70 to 97.70): VW
 Ion 132.00 (131.70 to 132.70): V
 Ion 130.00 (129.70 to 130.70): V

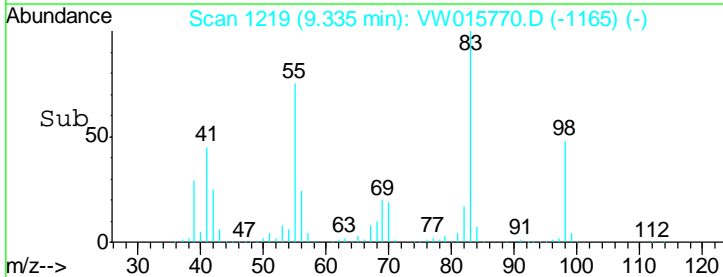
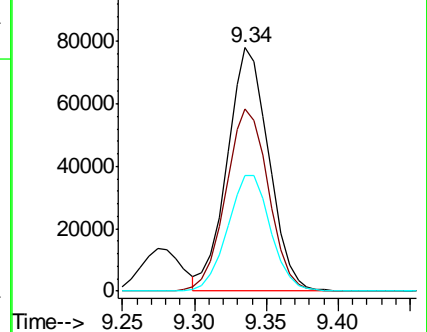


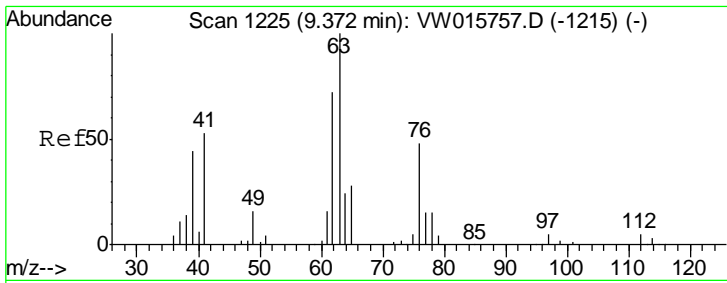
#36
 Methylcyclohexane
 Concen: 22.489 ug/L
 RT: 9.34 min Scan# 1219
 Delta R.T. -0.00 min
 Lab File: VW015770.D
 Acq: 29 Jun 2020 18:44

Tgt Ion	Resp	Lower	Upper
83	157331		
55	76.9	62.7	94.1
98	49.3	39.4	59.2



Abundance Ion 83.00 (82.70 to 83.70): VW
 Ion 55.00 (54.70 to 55.70): VW
 Ion 98.00 (97.70 to 98.70): VW

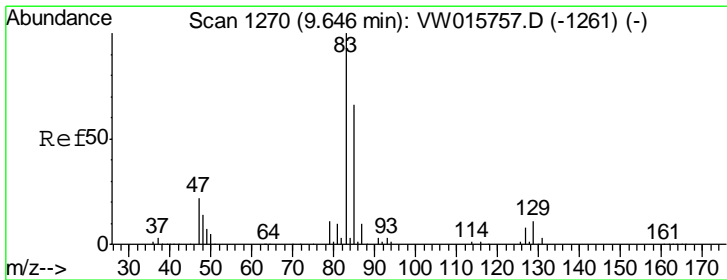
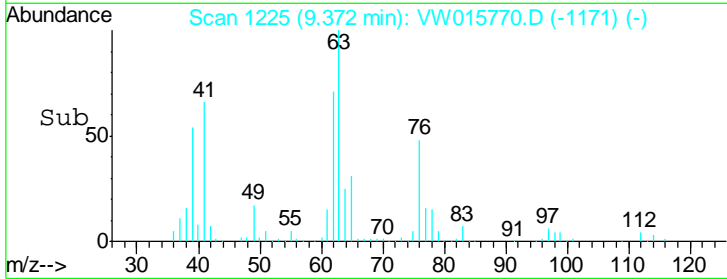
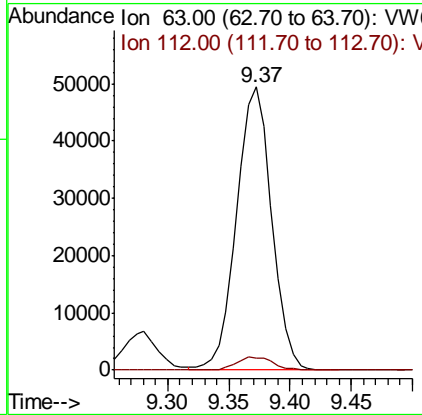
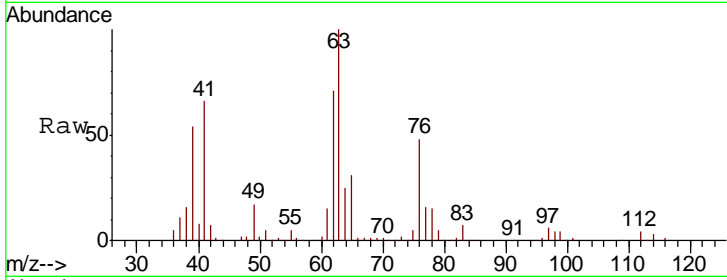




#40
 1,2-Dichloropropane
 Concen: 26.609 ug/L
 RT: 9.37 min Scan# 1225
 Delta R.T. -0.00 min
 Lab File: VW015770.D
 Acq: 29 Jun 2020 18:44

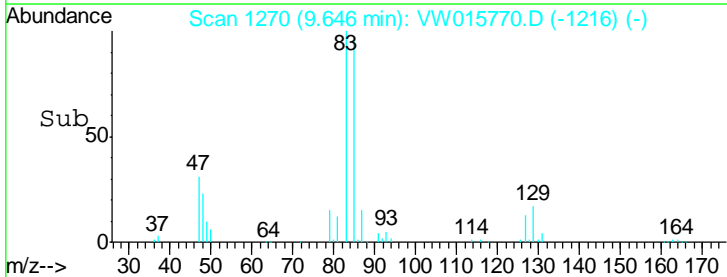
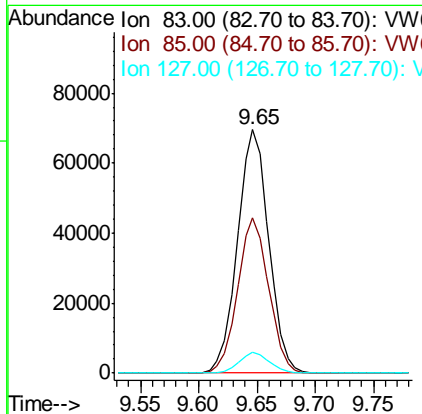
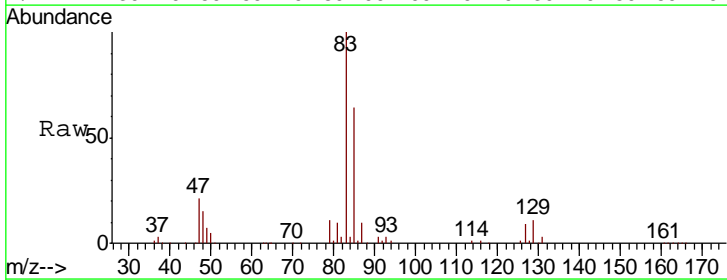
Instrument :
 MSVOA_W
ClientSampled :
 VSTD02517

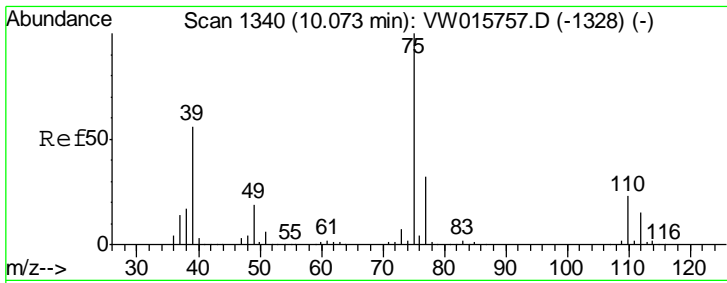
Tgt Ion	Resp	Lower	Upper
63	100		
112	4.8	4.0	6.0



#41
 Bromodichloromethane
 Concen: 27.091 ug/L
 RT: 9.65 min Scan# 1270
 Delta R.T. -0.00 min
 Lab File: VW015770.D
 Acq: 29 Jun 2020 18:44

Tgt Ion	Resp	Lower	Upper
83	100		
85	63.6	44.1	81.9
127	8.5	6.6	10.0

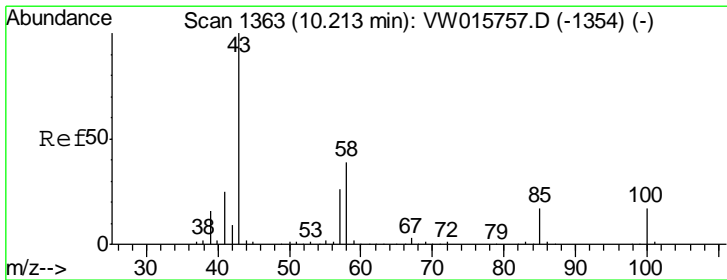
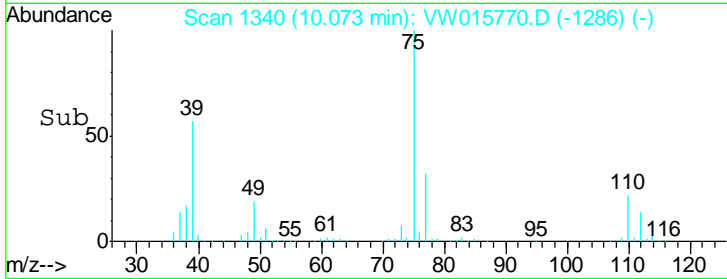
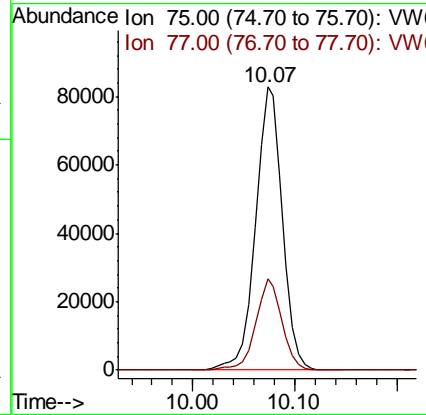
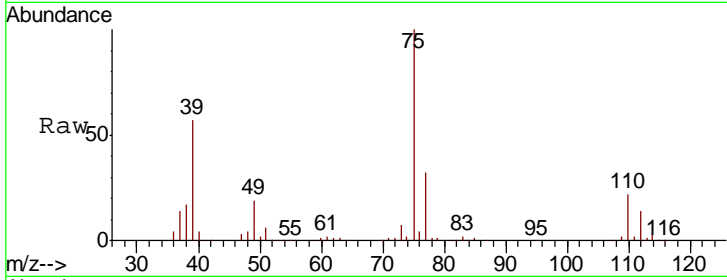




#42
 cis-1,3-Dichloropropene
 Concen: 26.299 ug/L
 RT: 10.07 min Scan# 1340
 Delta R.T. -0.00 min
 Lab File: VW015770.D
 Acq: 29 Jun 2020 18:44

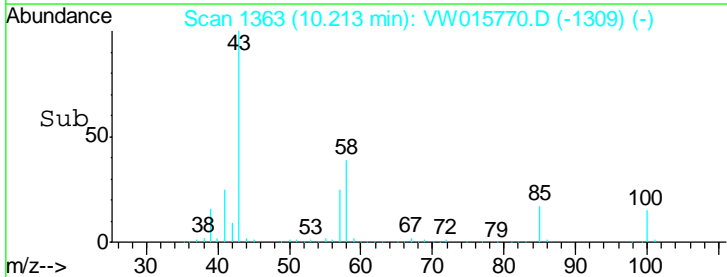
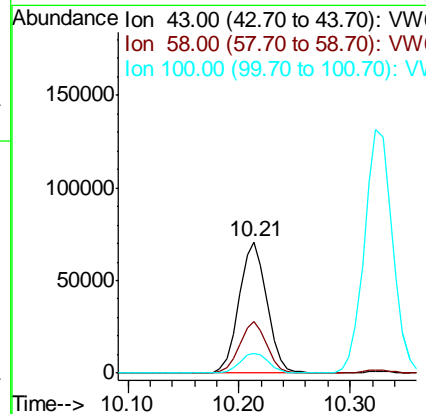
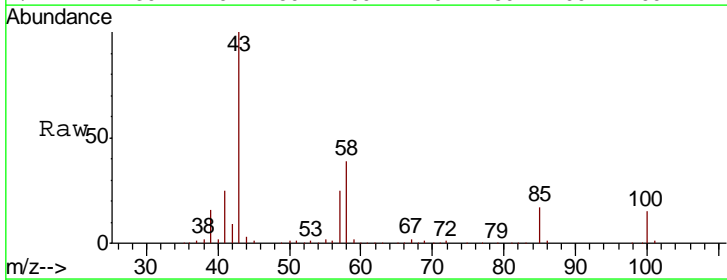
Instrument :
 MSVOA_W
 ClientSampled :
 VSTD02517

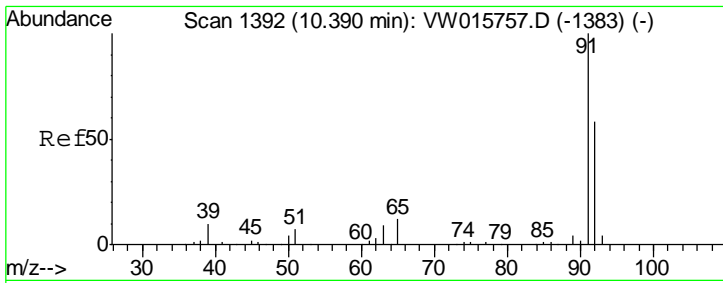
Tgt Ion: 75 Resp: 151985
 Ion Ratio Lower Upper
 75 100
 77 32.4 22.2 41.2



#43
 4-Methyl-2-pentanone
 Concen: 56.615 ug/L
 RT: 10.21 min Scan# 1363
 Delta R.T. -0.00 min
 Lab File: VW015770.D
 Acq: 29 Jun 2020 18:44

Tgt Ion: 43 Resp: 122286
 Ion Ratio Lower Upper
 43 100
 58 38.2 30.3 45.5
 100 15.5 12.8 19.2

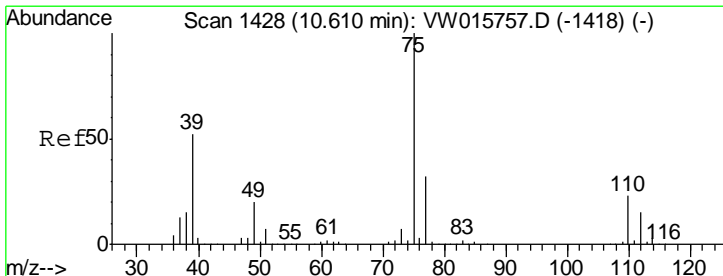
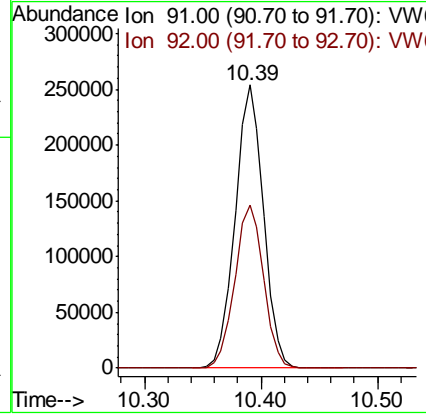
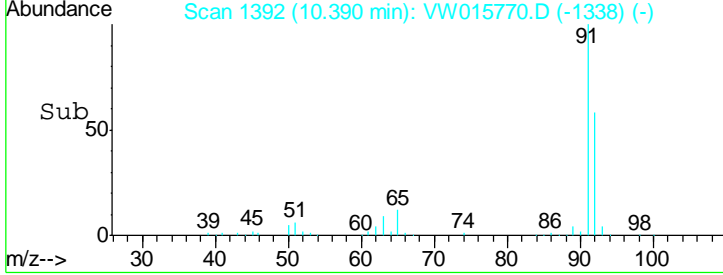
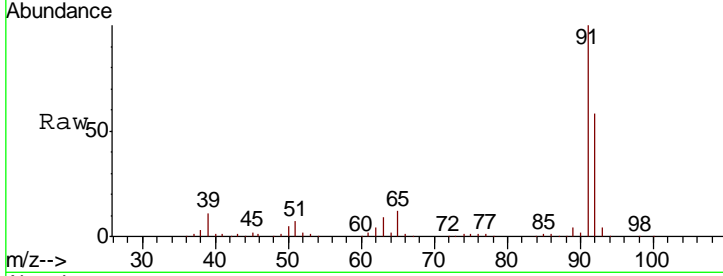




#44
 Toluene
 Concen: 25.966 ug/L
 RT: 10.39 min Scan# 1392
 Delta R.T. -0.00 min
 Lab File: VW015770.D
 Acq: 29 Jun 2020 18:44

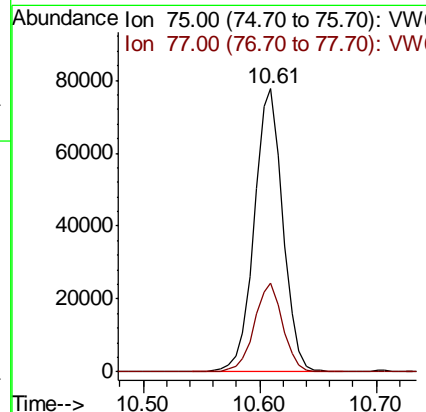
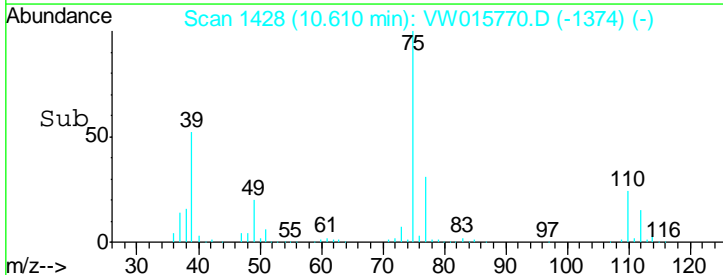
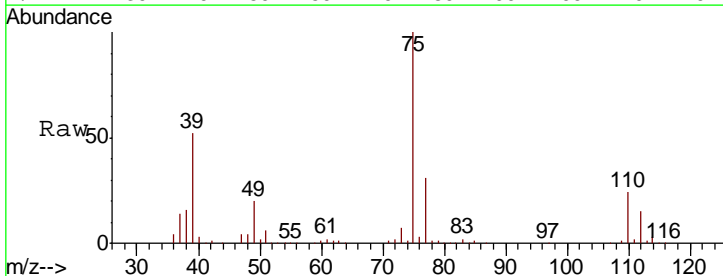
Instrument : MSVOA_W
 ClientSampleId : VSTD02517

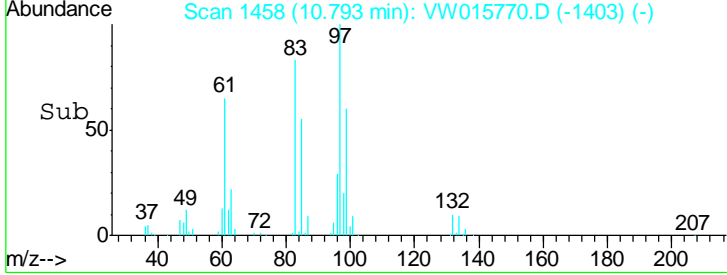
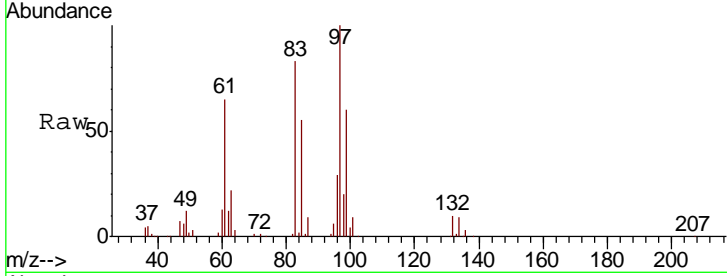
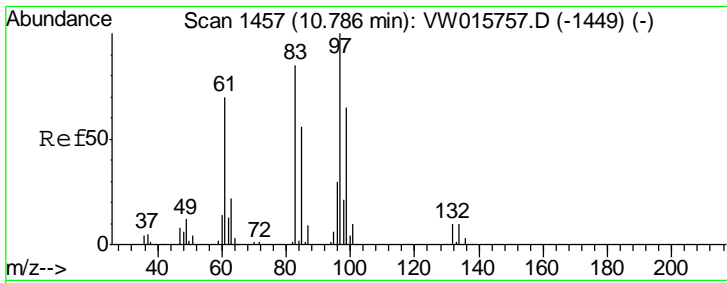
Tgt Ion: 91 Resp: 429105
 Ion Ratio Lower Upper
 91 100
 92 57.7 41.3 76.7



#45
 trans-1,3-Dichloropropene
 Concen: 26.462 ug/L
 RT: 10.61 min Scan# 1428
 Delta R.T. -0.00 min
 Lab File: VW015770.D
 Acq: 29 Jun 2020 18:44

Tgt Ion: 75 Resp: 133107
 Ion Ratio Lower Upper
 75 100
 77 31.3 22.5 41.7

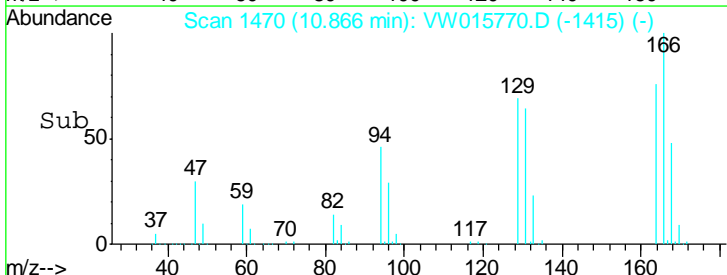
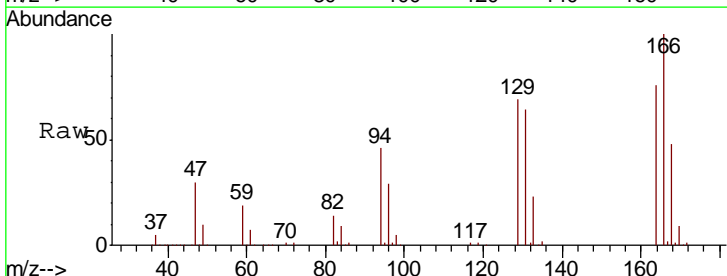
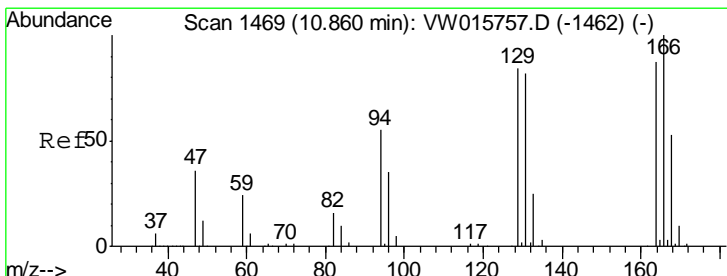
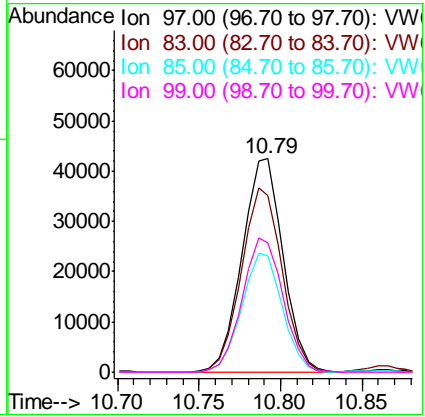




#46
 1,1,2-Trichloroethane
 Concen: 27.842 ug/L
 RT: 10.79 min Scan# 1458
 Delta R.T. 0.01 min
 Lab File: VW015770.D
 Acq: 29 Jun 2020 18:44

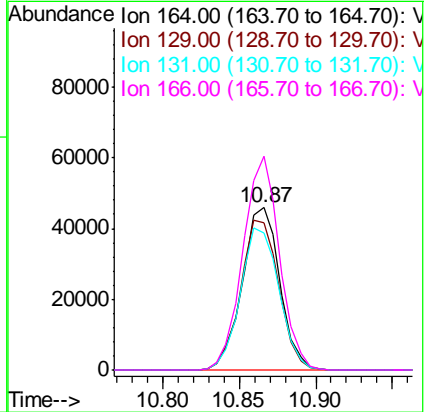
Instrument : MSVOA_W
 ClientSampled : VSTD02517

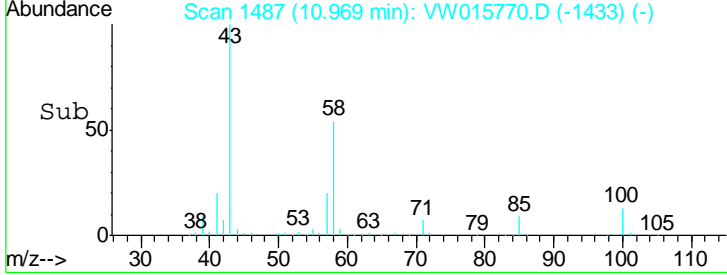
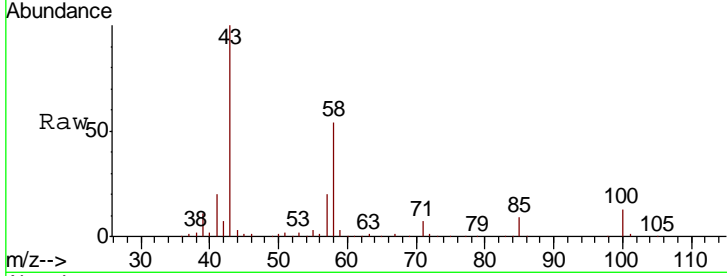
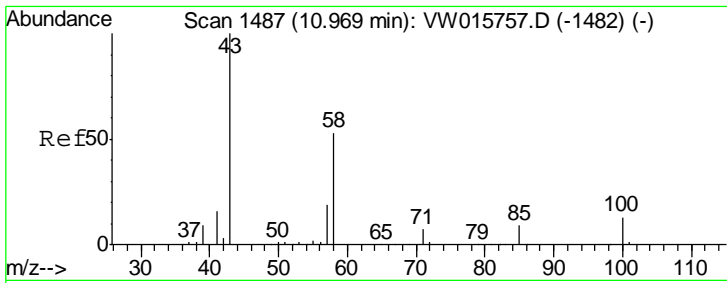
Tgt Ion	Resp	Lower	Upper
97	100		
83	82.9	58.4	108.4
85	54.8	39.2	72.8
99	60.3	43.5	80.7



#47
 Tetrachloroethene
 Concen: 24.056 ug/L
 RT: 10.87 min Scan# 1470
 Delta R.T. 0.01 min
 Lab File: VW015770.D
 Acq: 29 Jun 2020 18:44

Tgt Ion	Resp	Lower	Upper
164	100		
129	90.6	66.1	122.8
131	84.5	63.6	118.0
166	131.6	86.9	161.3

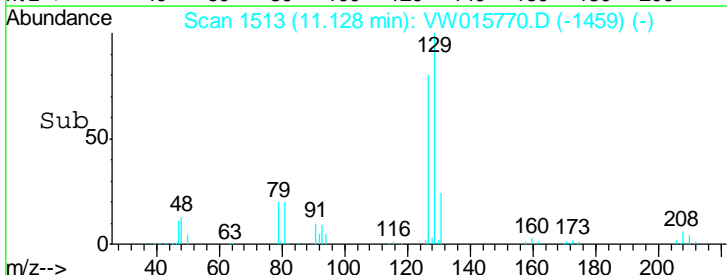
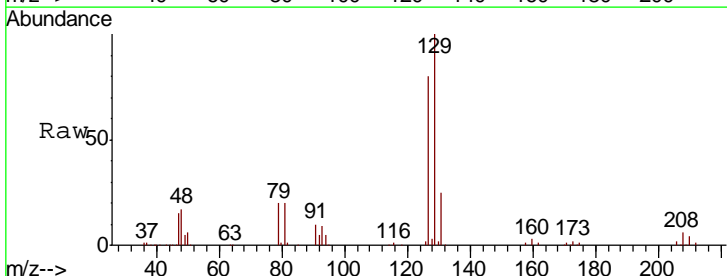
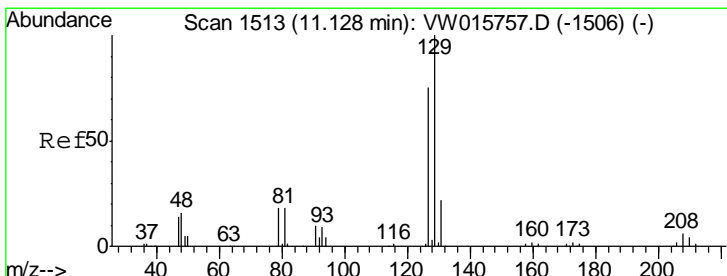
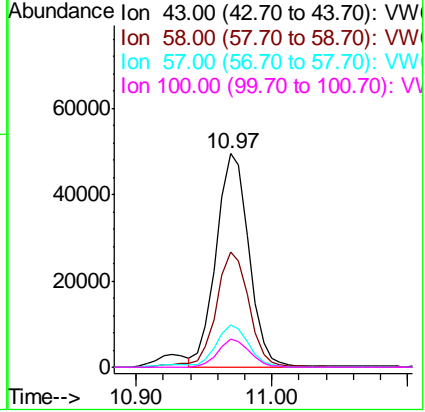




#49
 2-Hexanone
 Concen: 54.470 ug/L
 RT: 10.97 min Scan# 1487
 Delta R.T. -0.00 min
 Lab File: VW015770.D
 Acq: 29 Jun 2020 18:44

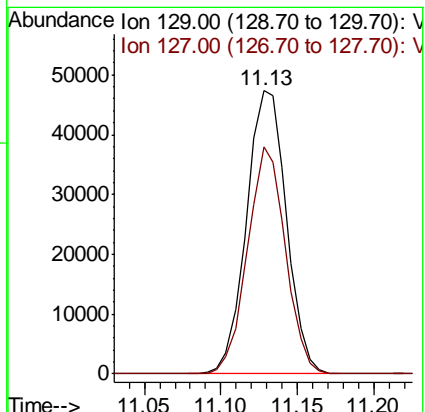
Instrument :
 MSVOA_W
 ClientSampled :
 VSTD02517

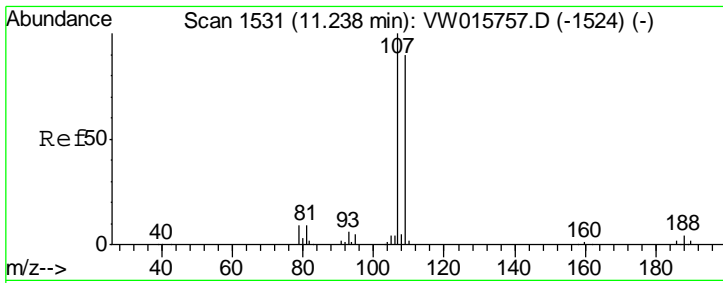
Tgt Ion	Resp	Lower	Upper
43	100		
58	53.2	43.5	65.3
57	19.7	15.4	23.0
100	12.9	10.0	15.0



#50
 Dibromochloromethane
 Concen: 27.508 ug/L
 RT: 11.13 min Scan# 1513
 Delta R.T. -0.00 min
 Lab File: VW015770.D
 Acq: 29 Jun 2020 18:44

Tgt Ion	Resp	Lower	Upper
129	100		
127	80.3	50.7	94.1

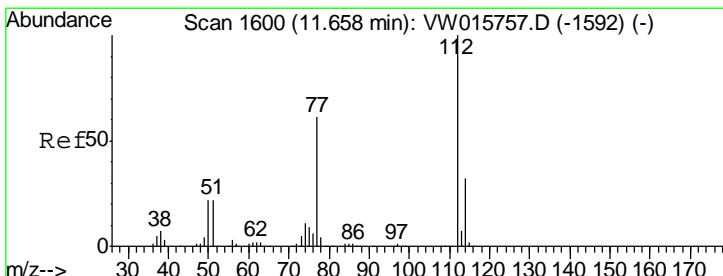
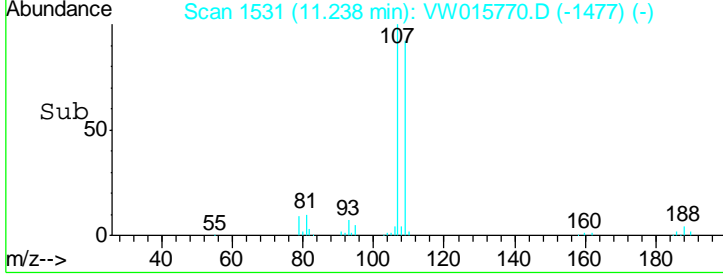
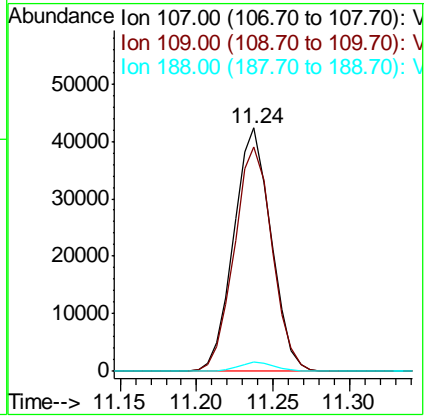
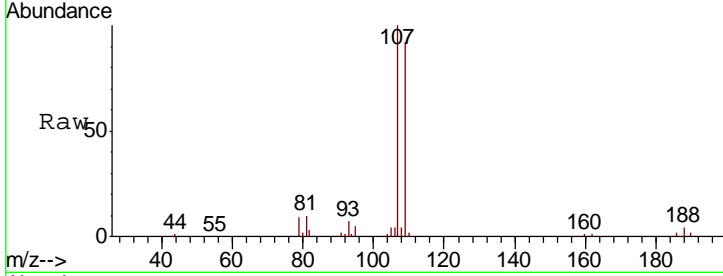




#51
 1,2-Dibromoethane
 Concen: 27.737 ug/L
 RT: 11.24 min Scan# 1531
 Delta R.T. -0.00 min
 Lab File: VW015770.D
 Acq: 29 Jun 2020 18:44

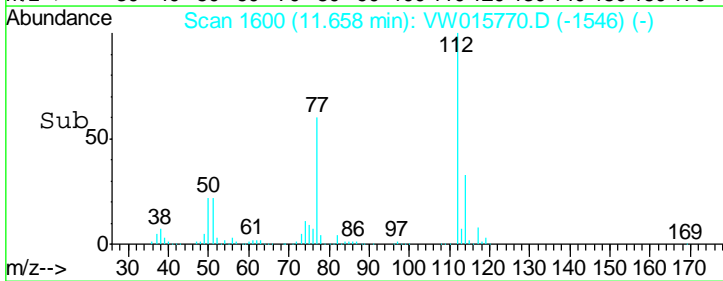
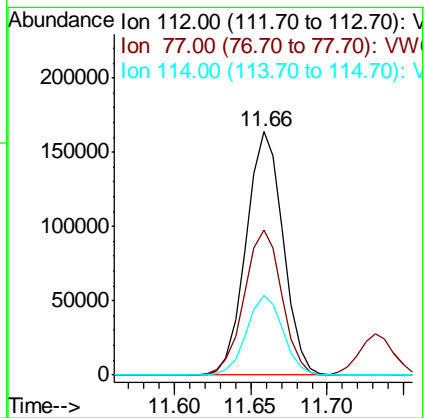
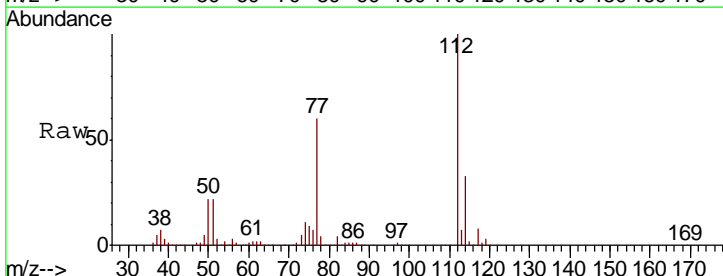
Instrument :
 MSVOA_W
 ClientSampled :
 VSTD02517

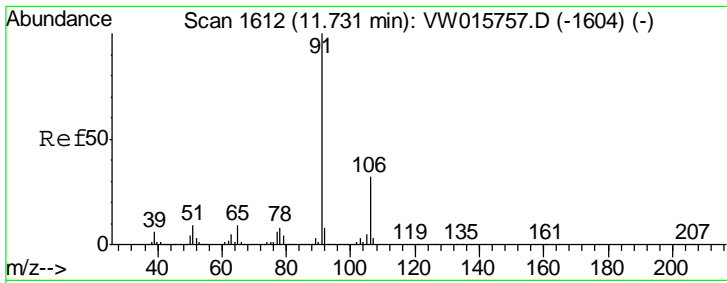
Tgt Ion	Resp	Lower	Upper
107	100		
109	92.1	64.0	118.8
188	4.0	3.1	4.7



#52
 Chlorobenzene
 Concen: 26.484 ug/L
 RT: 11.66 min Scan# 1600
 Delta R.T. -0.00 min
 Lab File: VW015770.D
 Acq: 29 Jun 2020 18:44

Tgt Ion	Resp	Lower	Upper
112	100		
77	59.5	48.4	72.6
114	32.6	21.8	40.4

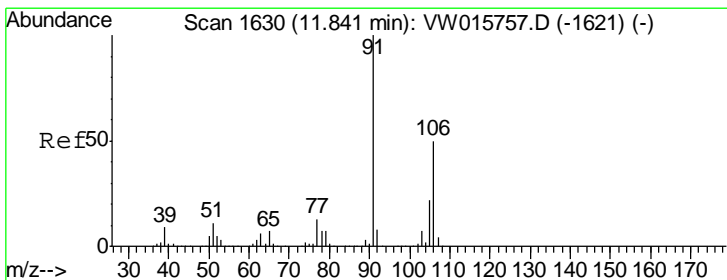
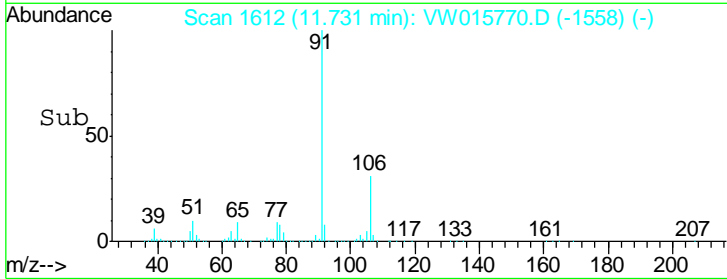
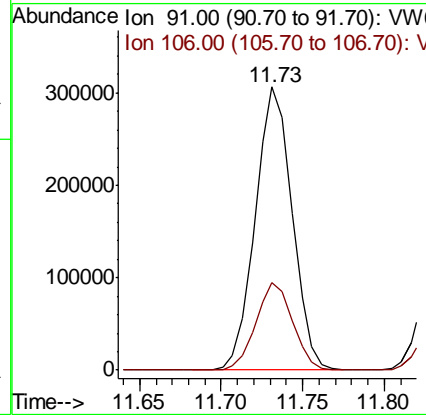
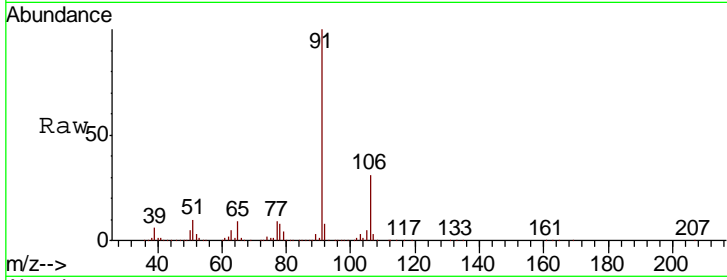




#53
 Ethylbenzene
 Concen: 25.887 ug/L
 RT: 11.73 min Scan# 1612
 Delta R.T. -0.00 min
 Lab File: VW015770.D
 Acq: 29 Jun 2020 18:44

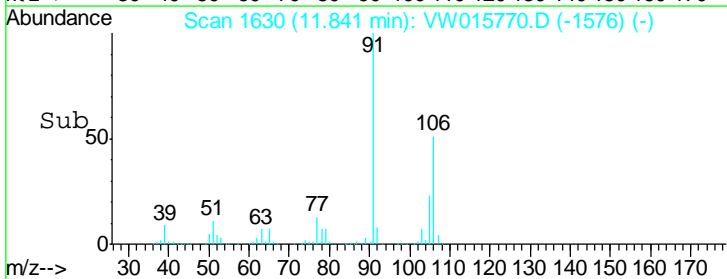
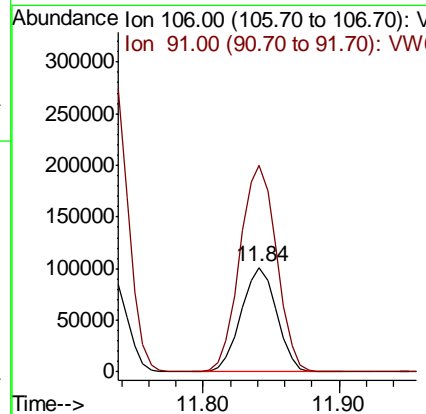
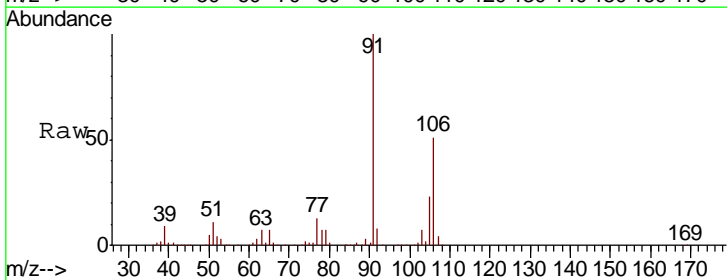
Instrument :
 MSVOA_W
 ClientSampled :
 VSTD02517

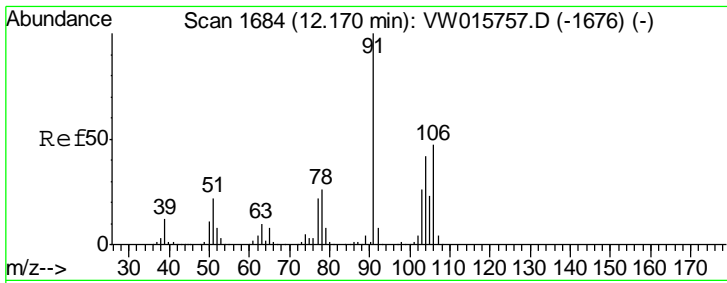
Tgt Ion: 91 Resp: 483681
 Ion Ratio Lower Upper
 91 100
 106 30.7 21.4 39.8



#54
 m,p-Xylene
 Concen: 26.523 ug/L
 RT: 11.84 min Scan# 1630
 Delta R.T. -0.00 min
 Lab File: VW015770.D
 Acq: 29 Jun 2020 18:44

Tgt Ion: 106 Resp: 185232
 Ion Ratio Lower Upper
 106 100
 91 196.9 141.5 262.9

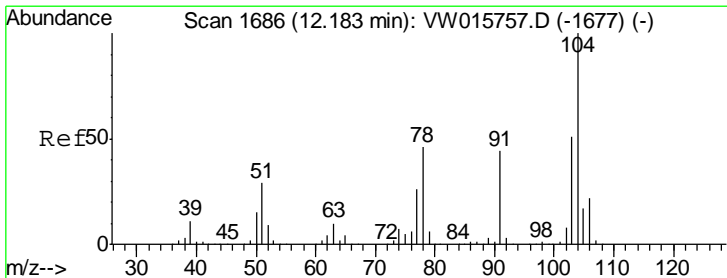
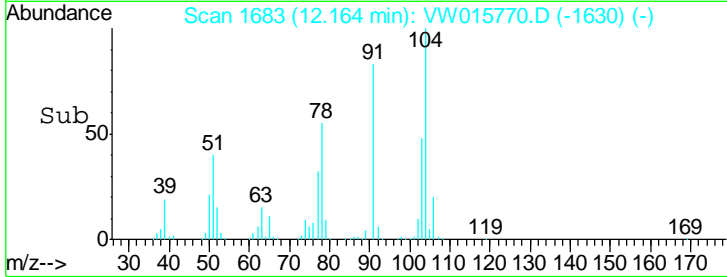
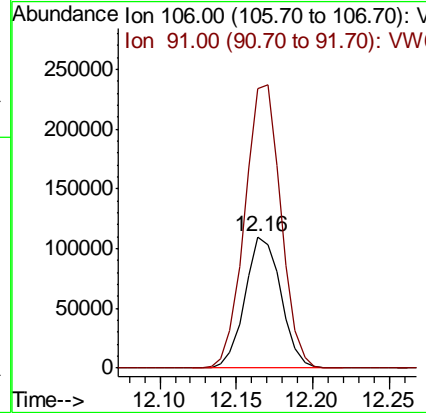
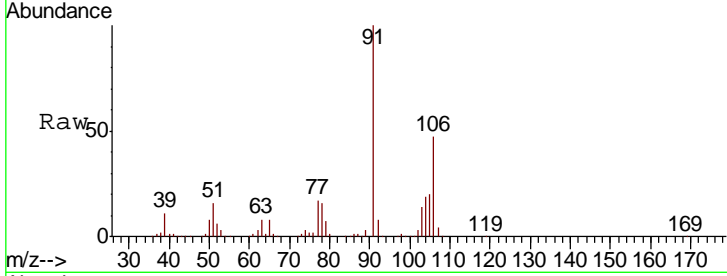




#55
 o-xylene
 Concen: 26.832 ug/L
 RT: 12.16 min Scan# 1683
 Delta R.T. -0.01 min
 Lab File: VW015770.D
 Acq: 29 Jun 2020 18:44

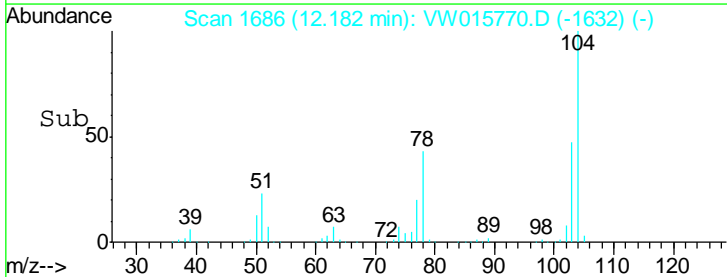
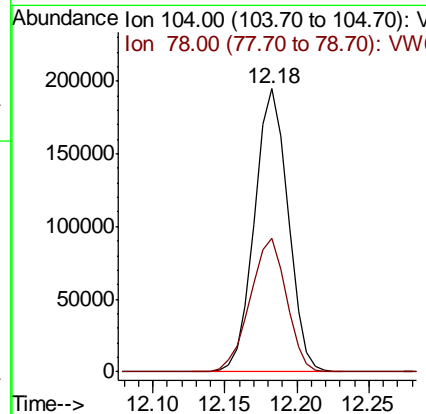
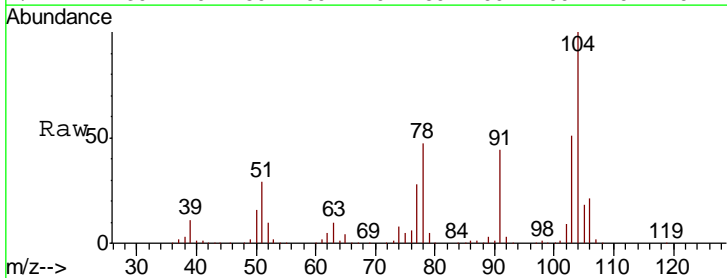
Instrument :
 MSVOA_W
 ClientSampled :
 VSTD02517

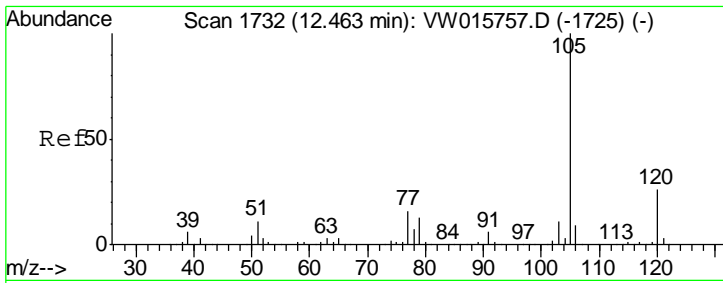
Tgt Ion:106 Resp: 179092
 Ion Ratio Lower Upper
 106 100
 91 212.9 151.3 280.9



#56
 Styrene
 Concen: 27.676 ug/L
 RT: 12.18 min Scan# 1686
 Delta R.T. -0.00 min
 Lab File: VW015770.D
 Acq: 29 Jun 2020 18:44

Tgt Ion:104 Resp: 313568
 Ion Ratio Lower Upper
 104 100
 78 47.0 32.4 60.2

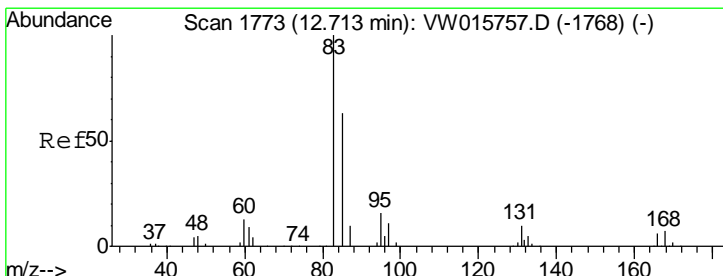
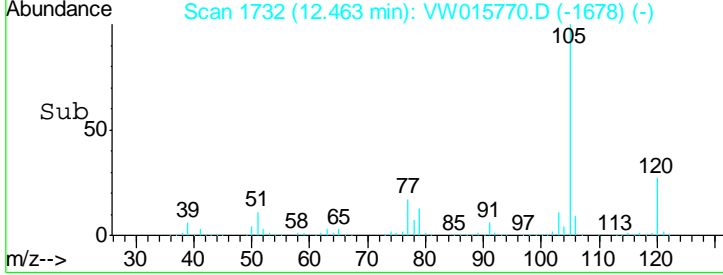
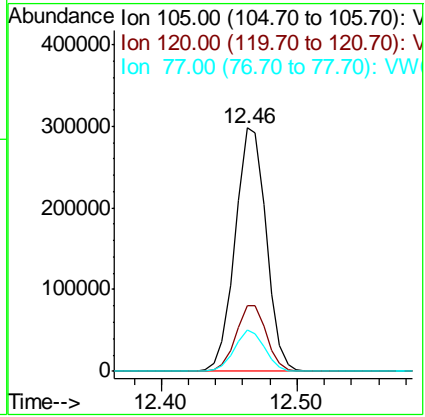
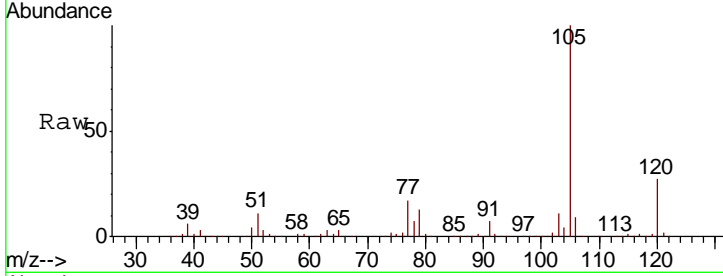




#57
 Isopropylbenzene
 Concen: 25.672 ug/L
 RT: 12.46 min Scan# 1732
 Delta R.T. -0.00 min
 Lab File: VW015770.D
 Acq: 29 Jun 2020 18:44

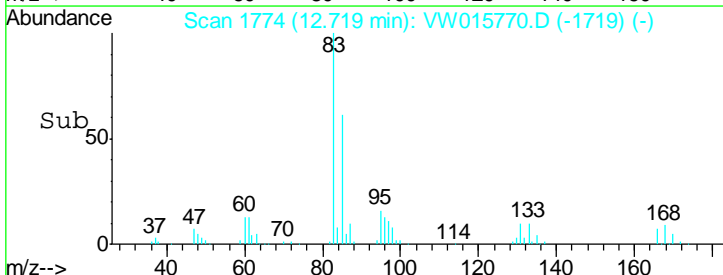
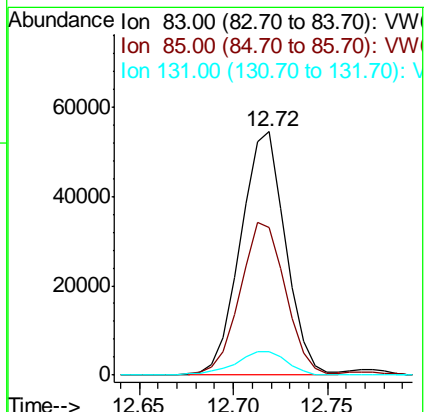
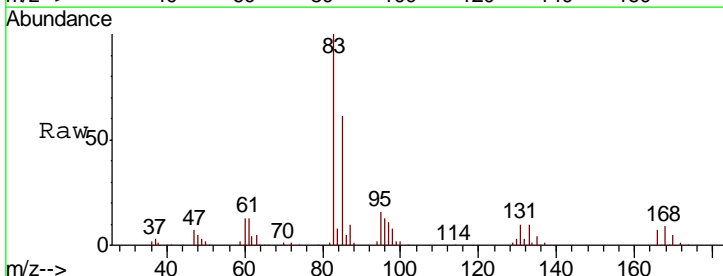
Instrument : MSVOA_W
 ClientSampled : VSTD02517

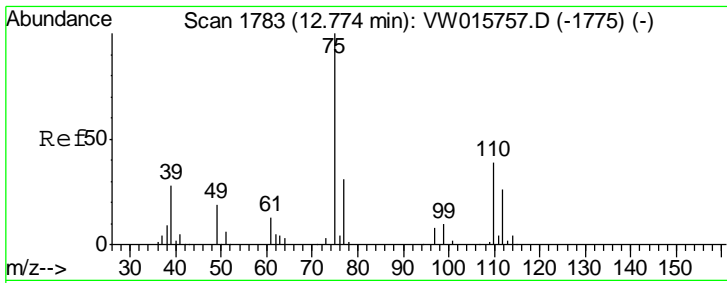
Tgt Ion	Resp	Lower	Upper
105	473296		
120	26.6	21.0	31.6
77	16.4	12.9	19.3



#58
 1,1,2,2-Tetrachloroethane
 Concen: 28.299 ug/L
 RT: 12.72 min Scan# 1774
 Delta R.T. 0.01 min
 Lab File: VW015770.D
 Acq: 29 Jun 2020 18:44

Tgt Ion	Resp	Lower	Upper
83	89998		
85	60.6	43.5	80.9
131	9.9	8.2	12.4

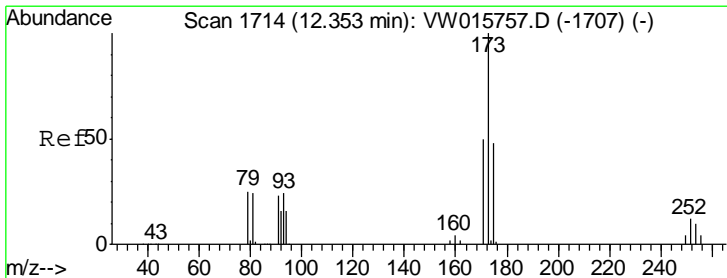
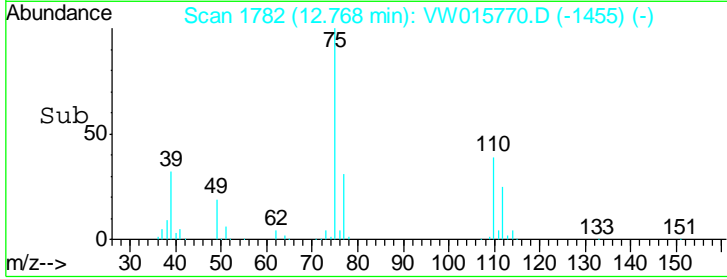
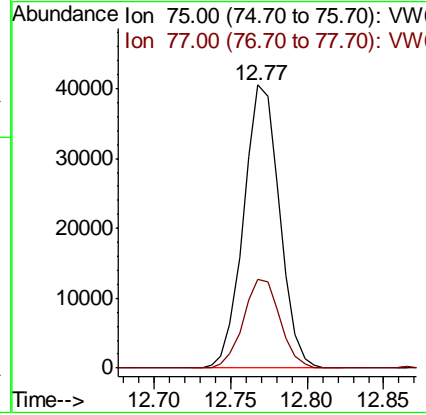
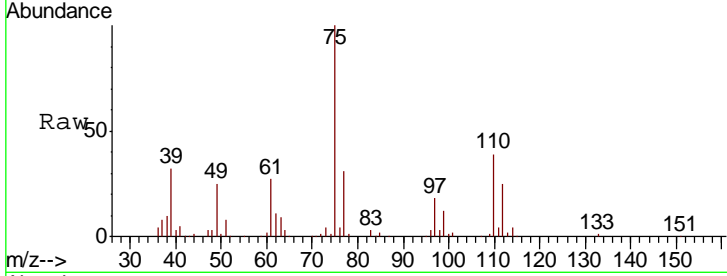




#59
 1,2,3-Trichloropropane
 Concen: 27.525 ug/L
 RT: 12.77 min Scan# 1782
 Delta R.T. -0.01 min
 Lab File: VW015770.D
 Acq: 29 Jun 2020 18:44

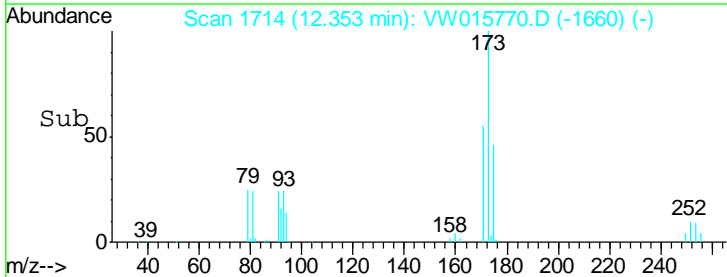
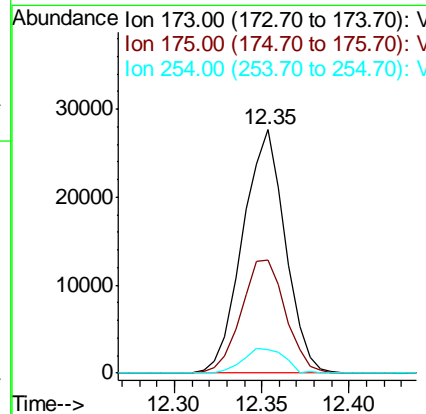
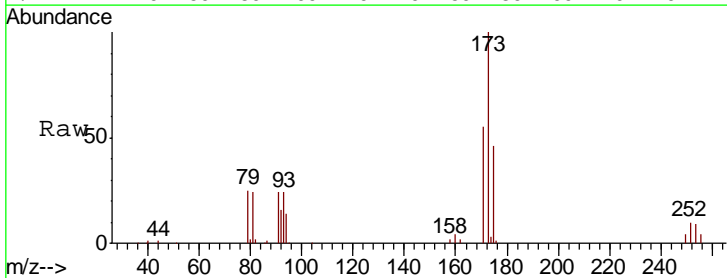
Instrument :
 MSVOA_W
 ClientSampled :
 VSTD02517

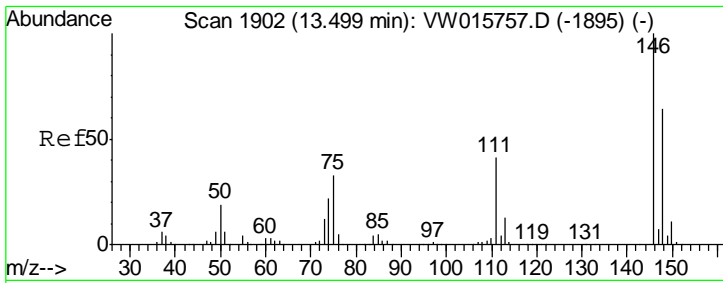
Tgt Ion: 75 Resp: 66112
 Ion Ratio Lower Upper
 75 100
 77 32.0 26.1 39.1



#62
 Bromoform
 Concen: 27.234 ug/L
 RT: 12.35 min Scan# 1714
 Delta R.T. -0.00 min
 Lab File: VW015770.D
 Acq: 29 Jun 2020 18:44

Tgt Ion: 173 Resp: 46782
 Ion Ratio Lower Upper
 173 100
 175 48.2 39.4 59.2
 254 9.8 8.2 12.2

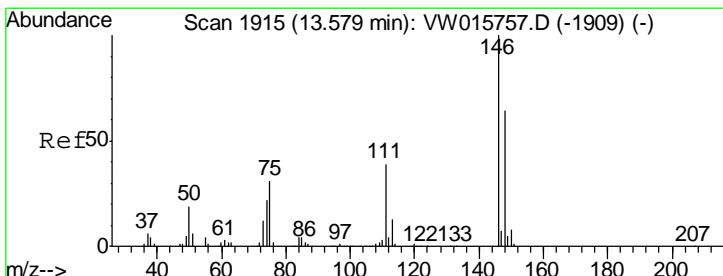
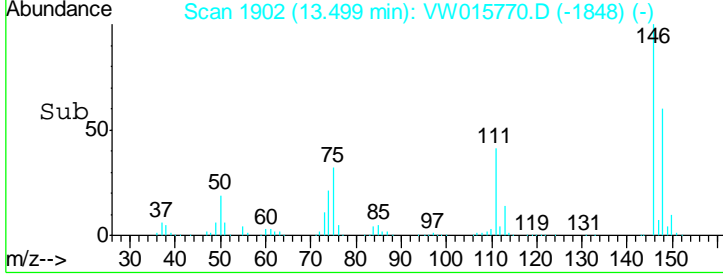
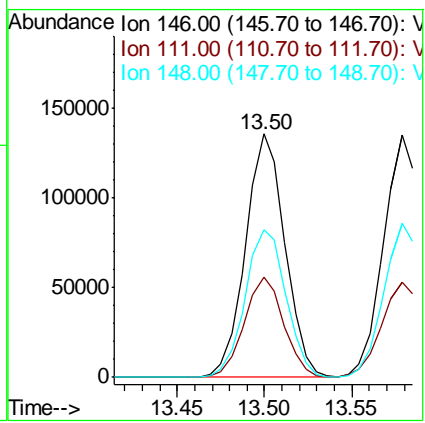
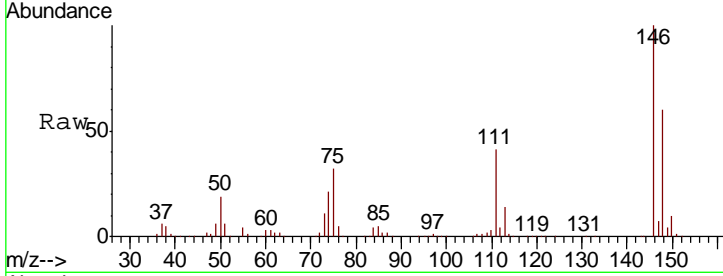




#63
 1,3-Dichlorobenzene
 Concen: 26.732 ug/L
 RT: 13.50 min Scan# 1902
 Delta R.T. -0.00 min
 Lab File: VW015770.D
 Acq: 29 Jun 2020 18:44

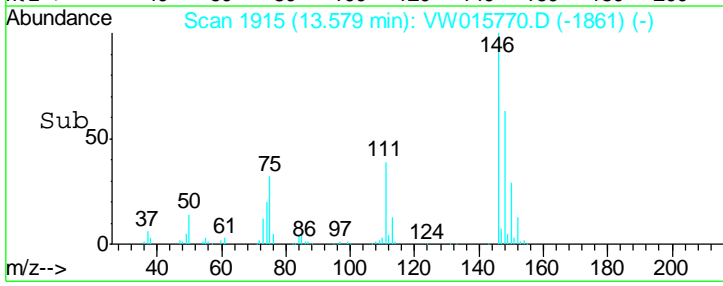
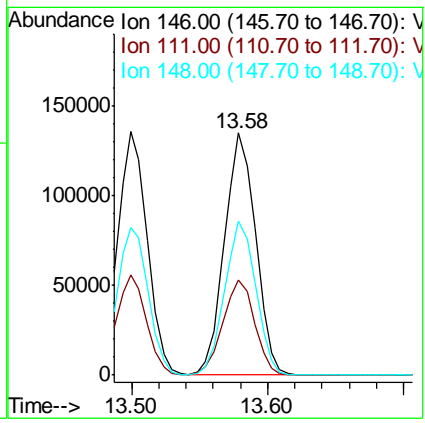
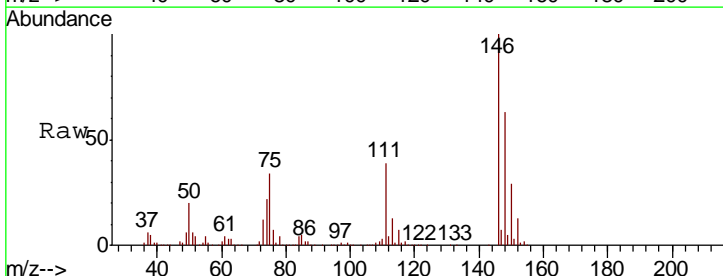
Instrument :
 MSVOA_W
 ClientSampled :
 VSTD02517

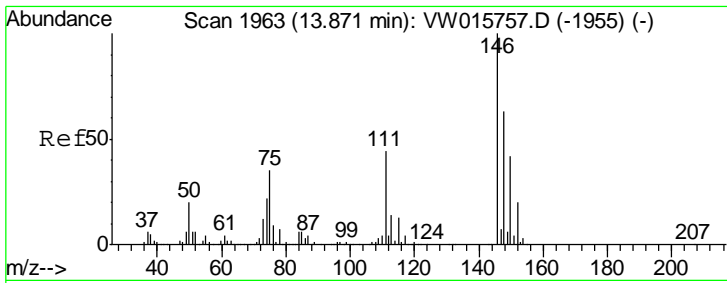
Tgt Ion	Resp	Lower	Upper
146	100		
111	41.4	28.8	53.6
148	60.4	43.6	81.0



#64
 1,4-Dichlorobenzene
 Concen: 27.216 ug/L
 RT: 13.58 min Scan# 1915
 Delta R.T. -0.00 min
 Lab File: VW015770.D
 Acq: 29 Jun 2020 18:44

Tgt Ion	Resp	Lower	Upper
146	100		
111	39.1	27.8	51.6
148	63.4	46.0	85.4

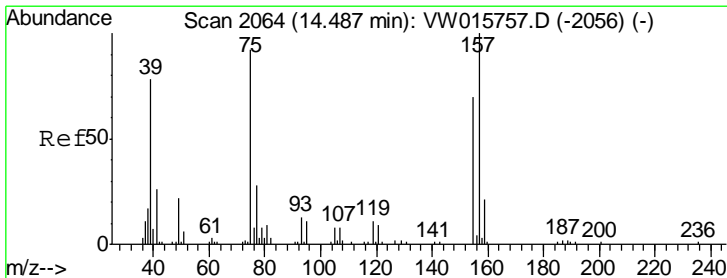
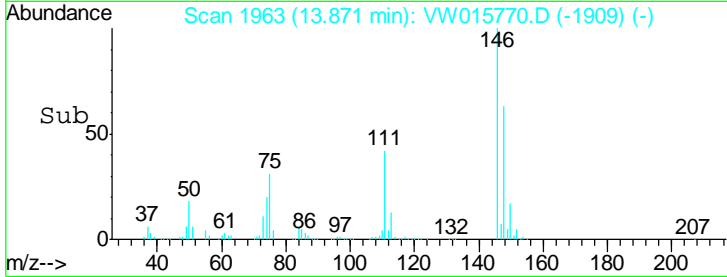
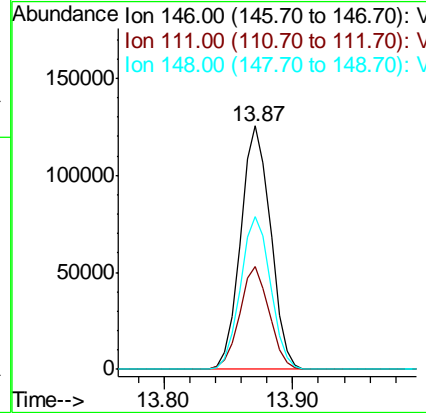
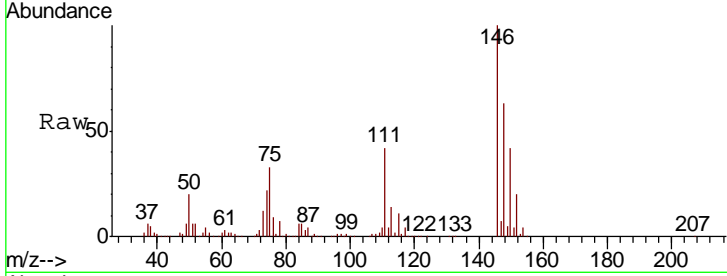




#65
 1,2-Dichlorobenzene
 Concen: 28.700 ug/L
 RT: 13.87 min Scan# 1963
 Delta R.T. -0.00 min
 Lab File: VW015770.D
 Acq: 29 Jun 2020 18:44

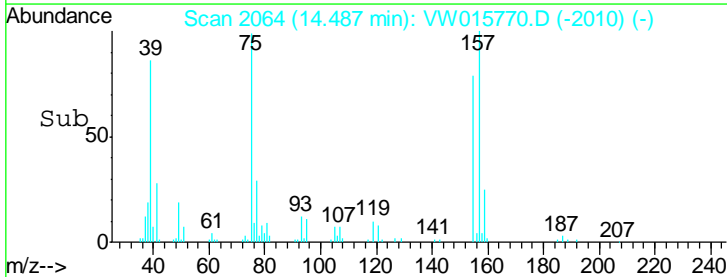
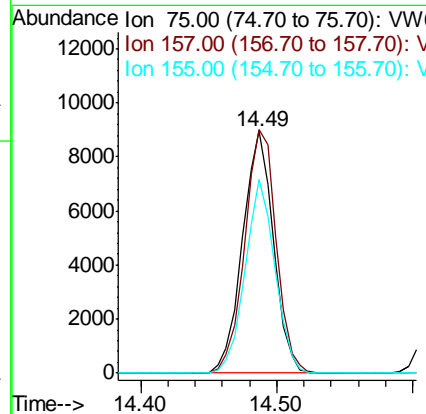
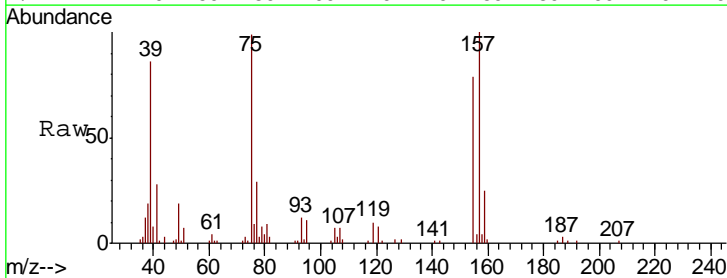
Instrument :
 MSVOA_W
 ClientSampled :
 VSTD02517

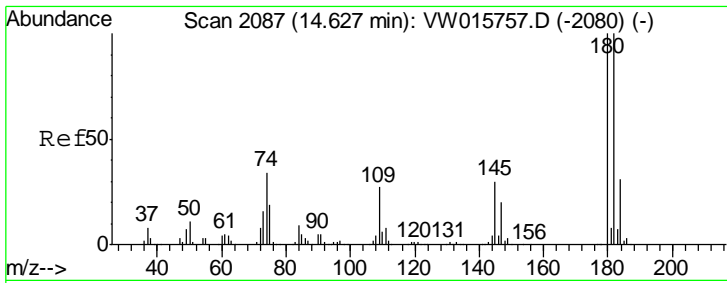
Tgt Ion	Resp	Lower	Upper
146	100		
111	42.1	35.5	53.3
148	62.9	51.4	77.2



#66
 1,2-Dibromo-3-chloropropane
 Concen: 28.160 ug/L
 RT: 14.49 min Scan# 2064
 Delta R.T. -0.00 min
 Lab File: VW015770.D
 Acq: 29 Jun 2020 18:44

Tgt Ion	Resp	Lower	Upper
75	100		
157	100.7	83.2	124.8
155	79.9	64.2	96.4

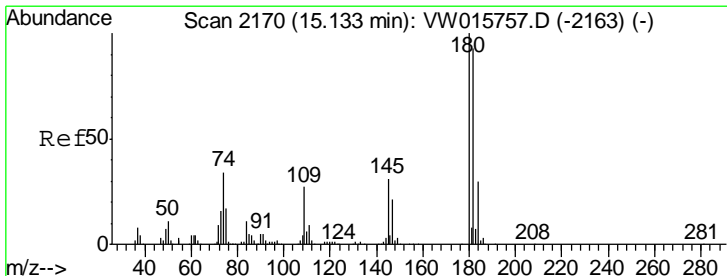
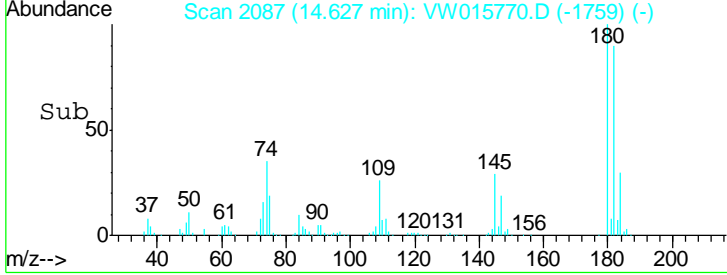
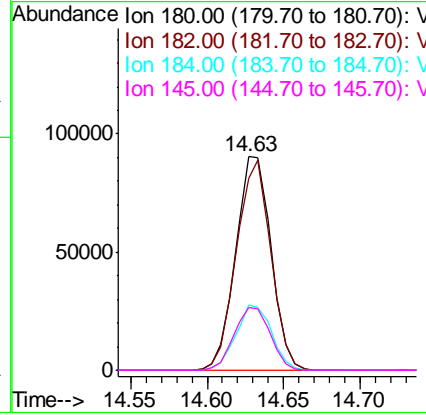
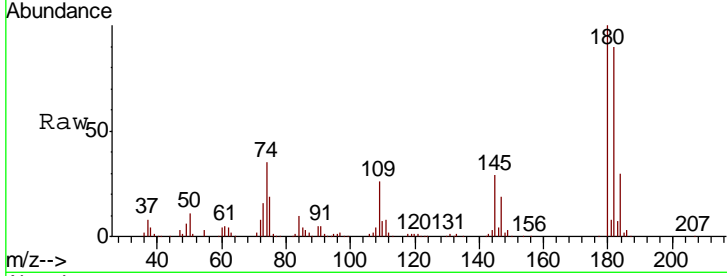




#67
 1,3,5-Trichlorobenzene
 Concen: 26.699 ug/L
 RT: 14.63 min Scan# 2087
 Delta R.T. -0.00 min
 Lab File: VW015770.D
 Acq: 29 Jun 2020 18:44

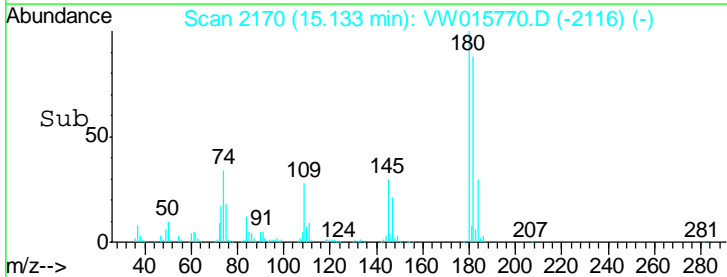
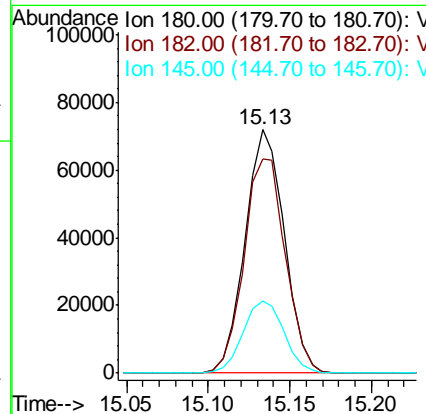
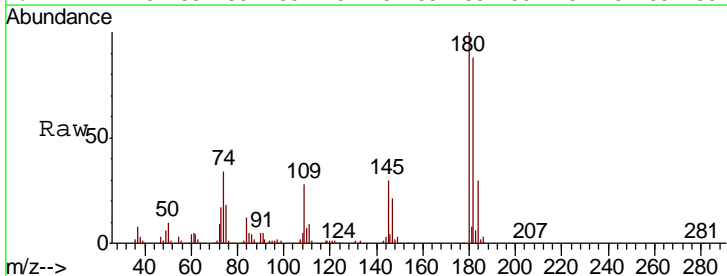
Instrument : MSVOA_W
 ClientSampled : VSTD02517

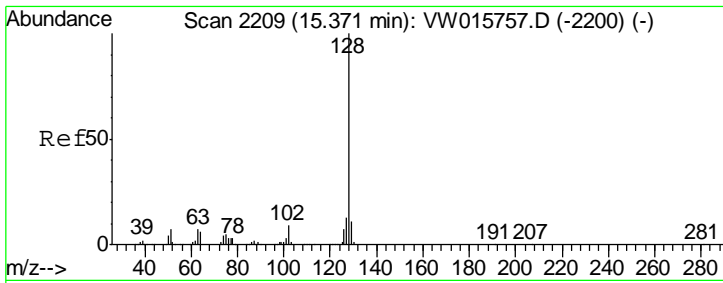
Tgt Ion	Resp	Lower	Upper
180	100		
182	95.5	76.1	114.1
184	30.5	24.2	36.2
145	29.8	23.8	35.6



#68
 1,2,4-trichlorobenzene
 Concen: 27.372 ug/L
 RT: 15.13 min Scan# 2170
 Delta R.T. -0.00 min
 Lab File: VW015770.D
 Acq: 29 Jun 2020 18:44

Tgt Ion	Resp	Lower	Upper
180	100		
182	92.7	75.5	113.3
145	30.9	24.6	37.0

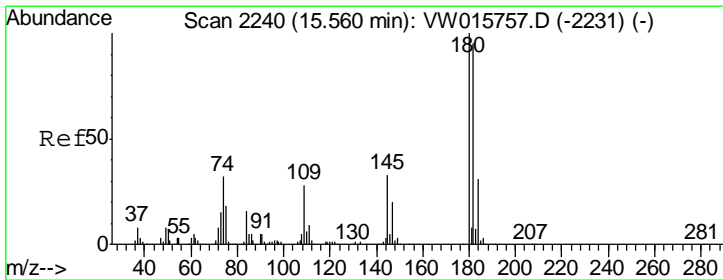
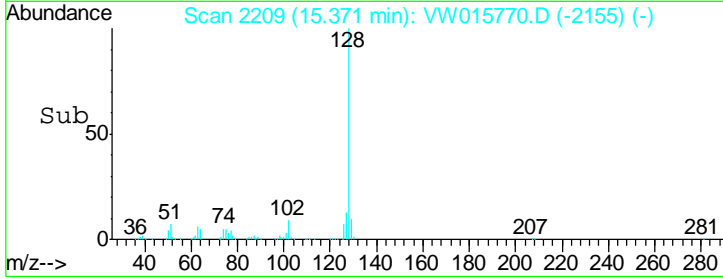
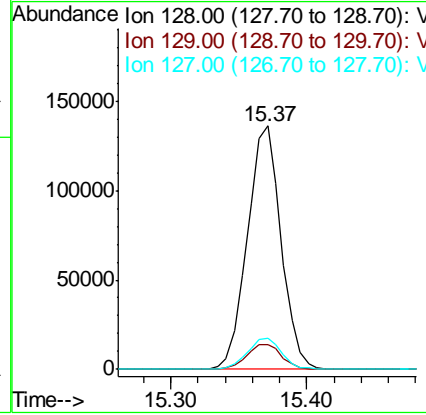
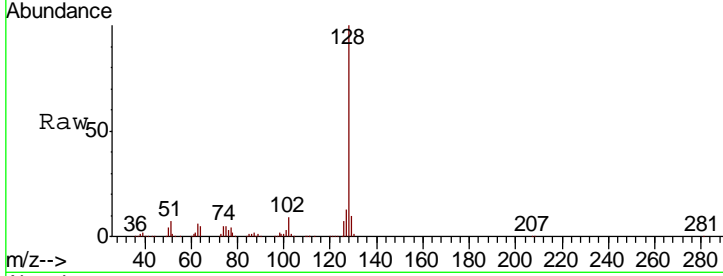




#69
 Naphthalene
 Concen: 29.278 ug/L
 RT: 15.37 min Scan# 2209
 Delta R.T. -0.00 min
 Lab File: VW015770.D
 Acq: 29 Jun 2020 18:44

Instrument : MSVOA_W
 Client Sampled : VSTD02517

Tgt Ion	Resp	Lower	Upper
128	100		
129	10.9	8.9	13.3
127	13.0	10.6	16.0



#70
 1,2,3-Trichlorobenzene
 Concen: 28.249 ug/L
 RT: 15.56 min Scan# 2240
 Delta R.T. -0.00 min
 Lab File: VW015770.D
 Acq: 29 Jun 2020 18:44

Tgt Ion	Resp	Lower	Upper
180	100		
182	95.1	75.5	113.3
145	32.8	25.4	38.0

