

Data Path : Z:\VOASRV\HPCHEM1\MSVOA W\DATA\VW070318\
 Data File : VW003699.D
 Acq On : 03 Jul 2018 15:25
 Operator : SY/AP
 Sample : J3245-21
 Misc : 5.84G/5ML/MSVOA W/SOIL
 ALS Vial : 13 Sample Multiplier: 1

Instrument :
 MSVOA_W
 ClientSampleId :
 CL-01-062918-C

Quant Time: Jul 04 00:02:24 2018
 Quant Method : Z:\VOASRV\HPCHEM1\MSVOA_W\METHOD\82W070218S.M
 Quant Title : SW846 8260
 QLast Update : Tue Jul 03 08:55:34 2018
 Response via : Initial Calibration

Internal Standards	R.T.	QIon	Response	Conc	Units	Dev(Min)
1) Pentafluorobenzene	7.95	168	175101	50.00	ug/l	0.00
34) 1,4-Difluorobenzene	8.85	114	293515	50.00	ug/l	0.00
63) Chlorobenzene-d5	11.63	117	252660	50.00	ug/l	0.00
72) 1,4-Dichlorobenzene-d4	13.57	152	99574	50.00	ug/l	0.00

System Monitoring Compounds

33) 1,2-Dichloroethane-d4	8.31	65	101684	48.71	ug/l	0.00
Spiked Amount				50.000		
			Recovery	=	97.42%	
35) Dibromofluoromethane	7.88	113	85015	44.41	ug/l	0.00
Spiked Amount				50.000		
			Recovery	=	88.82%	
50) Toluene-d8	10.33	98	264715	35.22	ug/l	0.00
Spiked Amount				50.000		
			Recovery	=	70.44%	
62) 4-Bromofluorobenzene	12.62	95	84845	31.43	ug/l	0.00
Spiked Amount				50.000		
			Recovery	=	62.86%	

Target Compounds

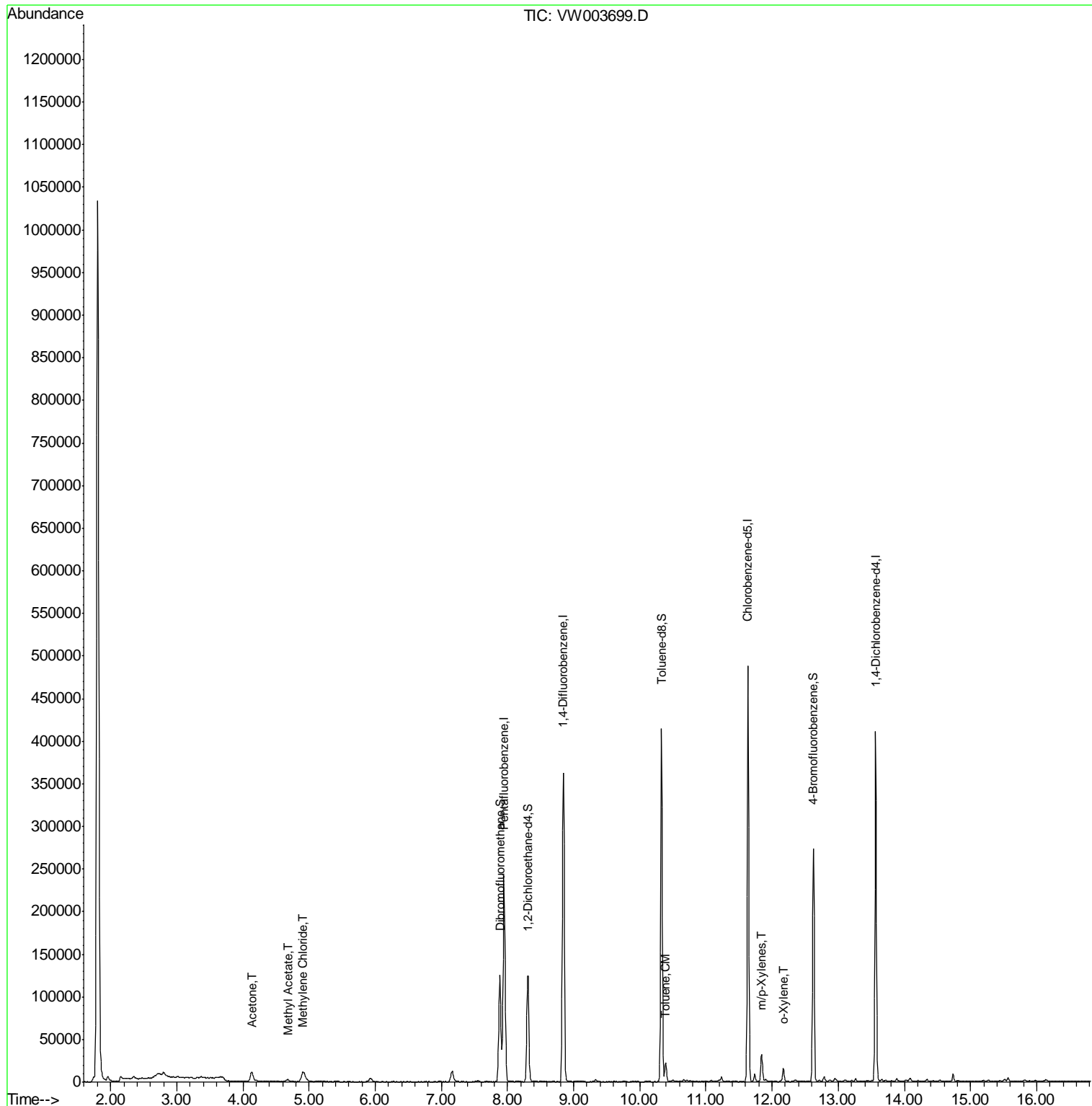
						Qvalue
16) Acetone	4.14	43	20304	40.745	ug/l	98
18) Methyl Acetate	4.68	43	4921	5.206	ug/l	93
20) Methylene Chloride	4.90	84	10984	2.590	ug/l	95
52) Toluene	10.39	92	8491	1.643	ug/l	99
68) m/p-Xylenes	11.84	106	8538	2.412	ug/l	94
69) o-Xylene	12.17	106	3629	1.109	ug/l	95

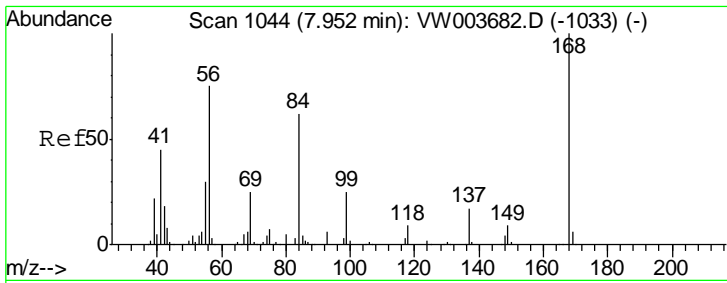
(#) = qualifier out of range (m) = manual integration (+) = signals summed

Data Path : Z:\VOASRV\HPCHEM1\MSVOA W\DATA\VW070318\
 Data File : VW003699.D
 Acq On : 03 Jul 2018 15:25
 Operator : SY/AP
 Sample : J3245-21
 Misc : 5.84G/5ML/MSVOA W/SOIL
 ALS Vial : 13 Sample Multiplier: 1

Instrument :
 MSVOA_W
 ClientSampleId :
 CL-01-062918-C

Quant Time: Jul 04 00:02:24 2018
 Quant Method : Z:\VOASRV\HPCHEM1\MSVOA_W\METHOD\82W070218S.M
 Quant Title : SW846 8260
 QLast Update : Tue Jul 03 08:55:34 2018
 Response via : Initial Calibration

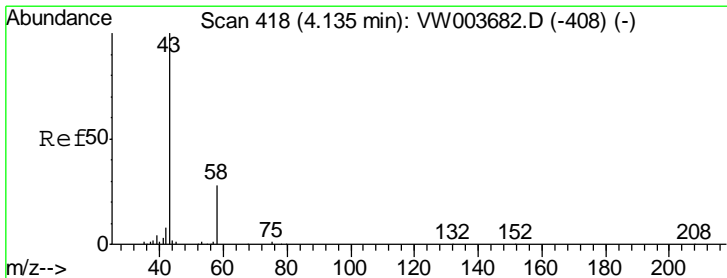
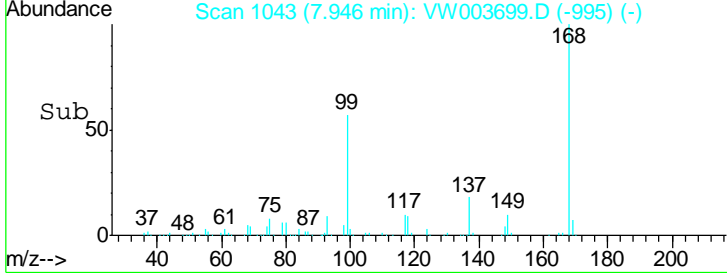
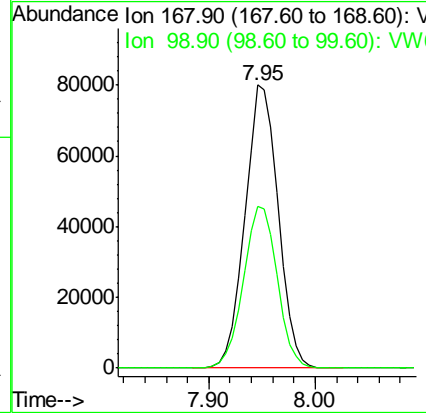
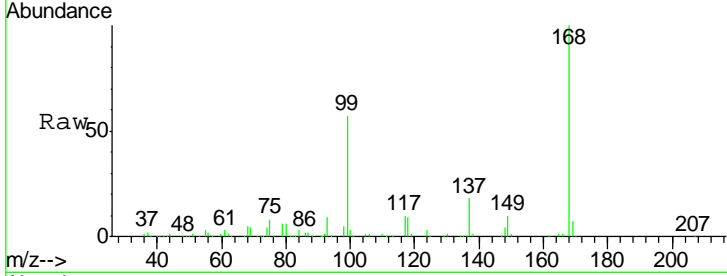




#1
 Pentafluorobenzene
 Concen: 50.000 ug/l
 RT: 7.95 min Scan# 1043
 Delta R.T. -0.01 min
 Lab File: VW003699.D
 Acq: 03 Jul 2018 15:25

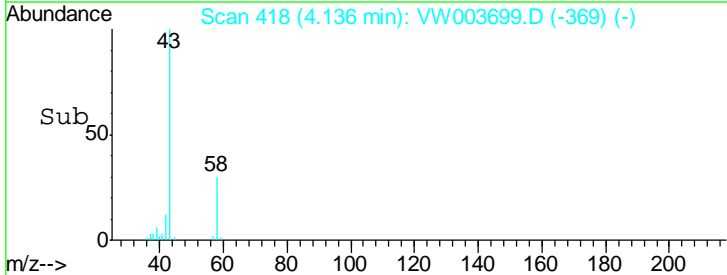
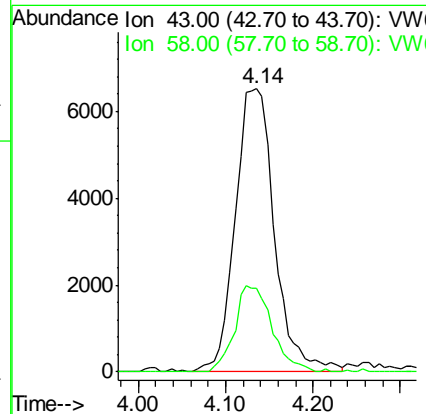
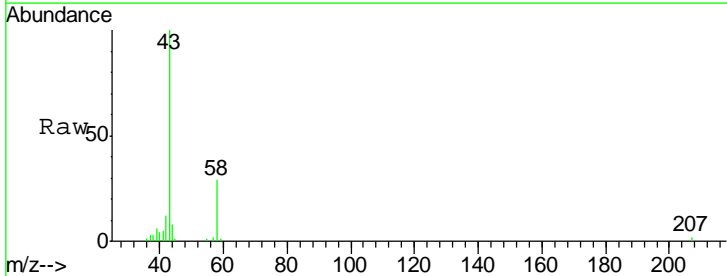
Instrument : MSVOA_W
 ClientSampled : CL-01-062918-C

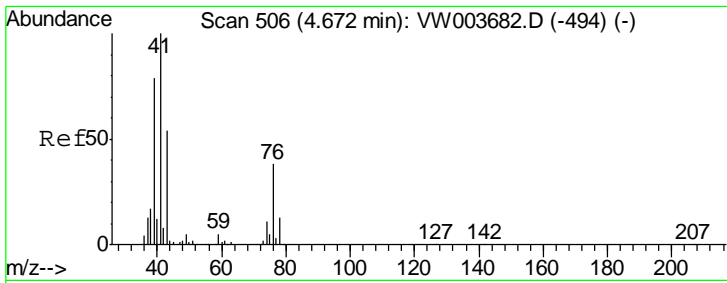
Tgt Ion	Resp	Lower	Upper
168	175101		
99	56.9	45.4	68.2



#16
 Acetone
 Concen: 40.745 ug/l
 RT: 4.14 min Scan# 418
 Delta R.T. 0.00 min
 Lab File: VW003699.D
 Acq: 03 Jul 2018 15:25

Tgt Ion	Resp	Lower	Upper
43	20304		
58	29.5	22.7	34.1

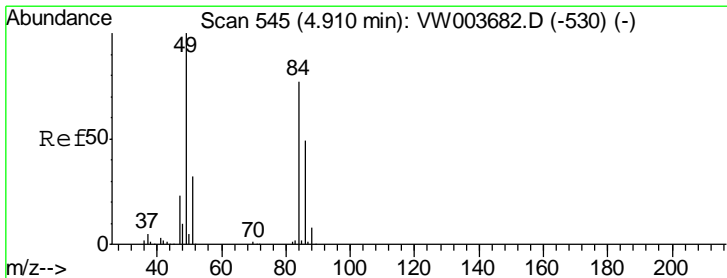
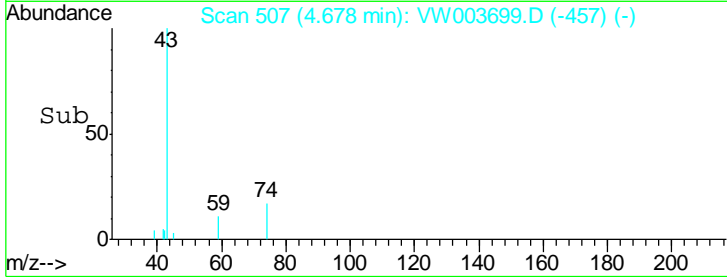
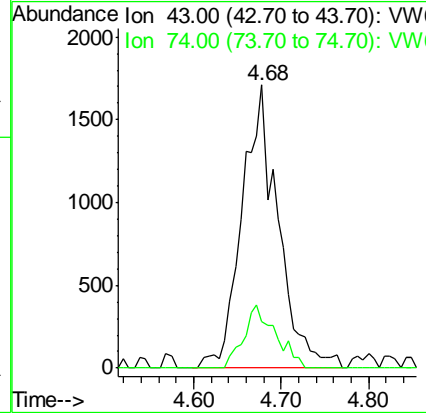
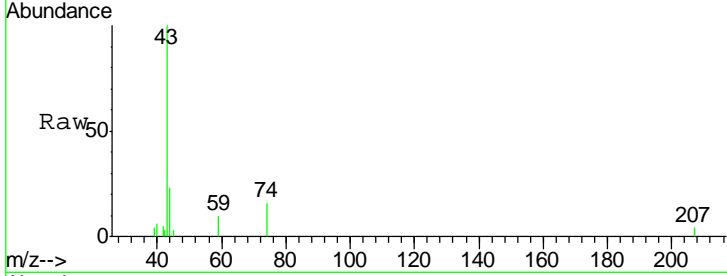




#18
 Methyl Acetate
 Concen: 5.206 ug/l
 RT: 4.68 min Scan# 507
 Delta R.T. 0.01 min
 Lab File: VW003699.D
 Acq: 03 Jul 2018 15:25

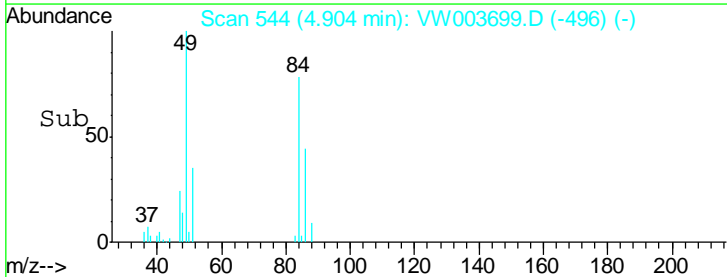
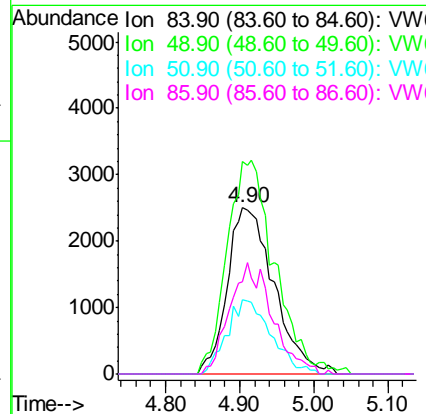
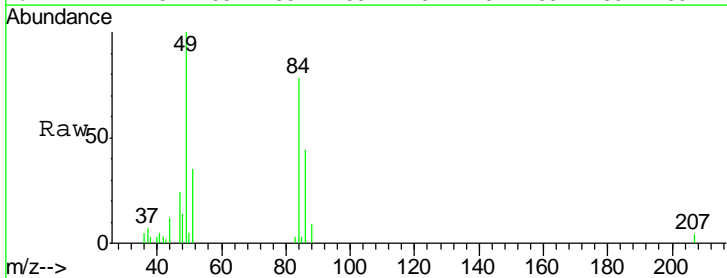
Instrument :
 MSVOA_W
 ClientSampled :
 CL-01-062918-C

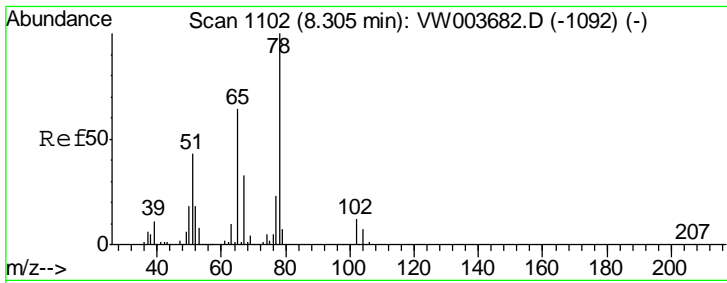
Tgt Ion: 43 Resp: 4921
 Ion Ratio Lower Upper
 43 100
 74 19.5 18.2 27.2



#20
 Methylene Chloride
 Concen: 2.590 ug/l
 RT: 4.90 min Scan# 544
 Delta R.T. -0.01 min
 Lab File: VW003699.D
 Acq: 03 Jul 2018 15:25

Tgt Ion: 84 Resp: 10984
 Ion Ratio Lower Upper
 84 100
 49 128.1 104.6 156.8
 51 44.8 33.2 49.8
 86 55.8 51.7 77.5

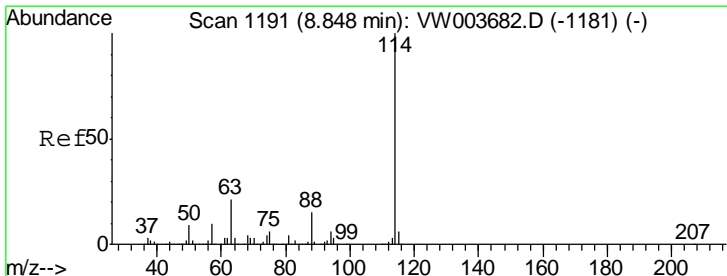
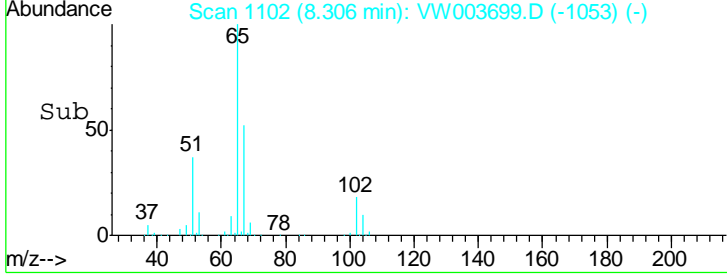
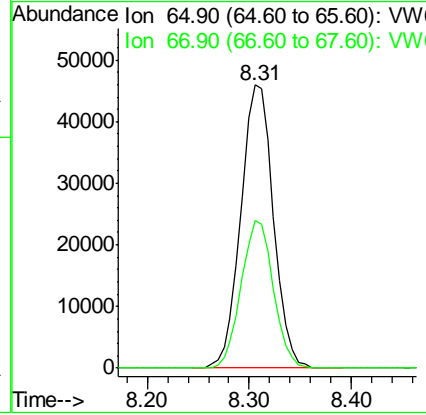
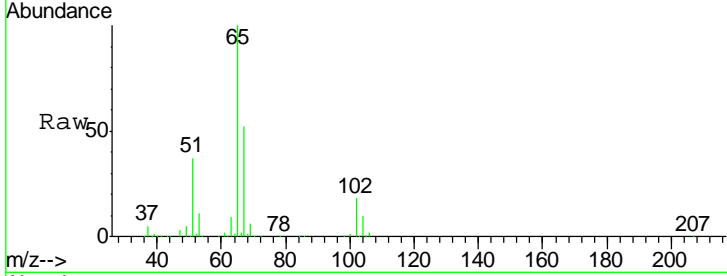




#33
 1,2-Dichloroethane-d4
 Concen: 48.709 ug/l
 RT: 8.31 min Scan# 1102
 Delta R.T. 0.00 min
 Lab File: VW003699.D
 Acq: 03 Jul 2018 15:25

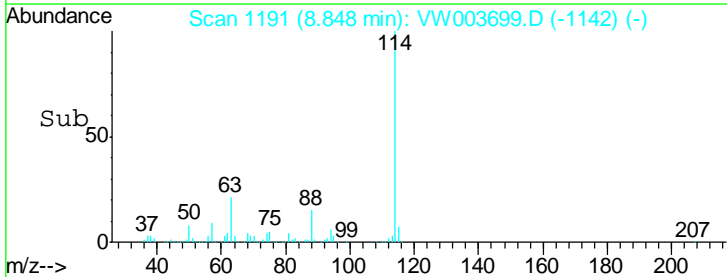
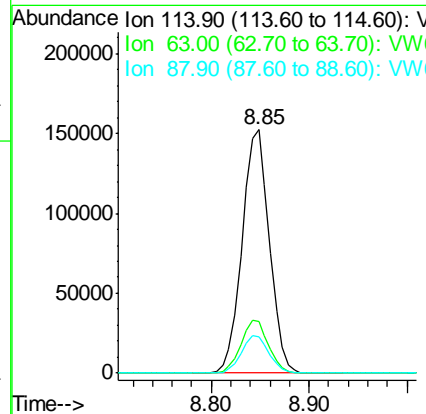
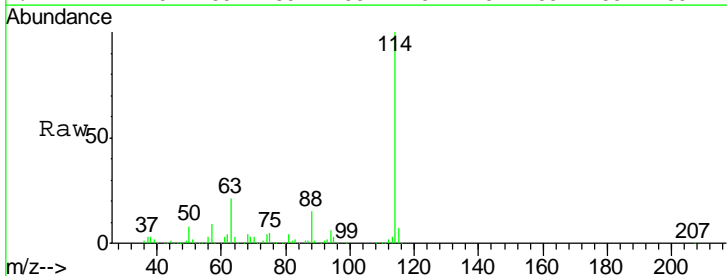
Instrument :
 MSVOA_W
ClientSampled :
 CL-01-062918-C

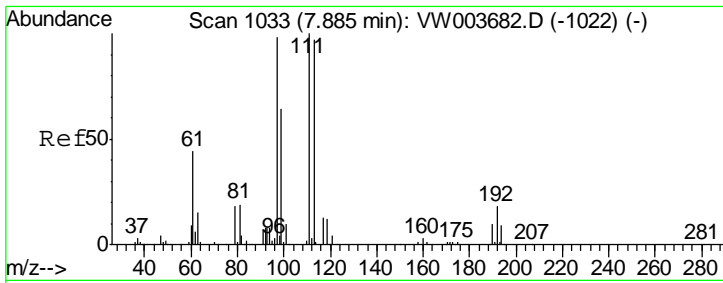
Tgt Ion	Resp	Lower	Upper
65	101684		
67	51.7	0.0	104.0



#34
 1,4-Difluorobenzene
 Concen: 50.000 ug/l
 RT: 8.85 min Scan# 1191
 Delta R.T. 0.00 min
 Lab File: VW003699.D
 Acq: 03 Jul 2018 15:25

Tgt Ion	Resp	Lower	Upper
114	293515		
63	21.2	0.0	41.6
88	14.8	0.0	29.8

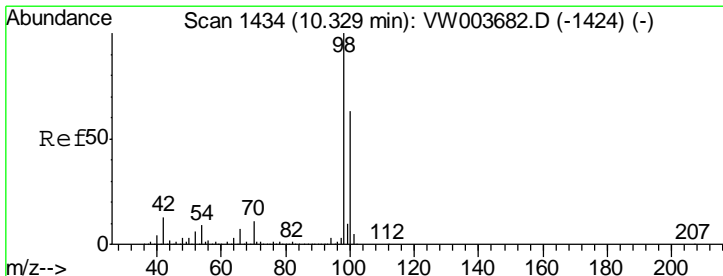
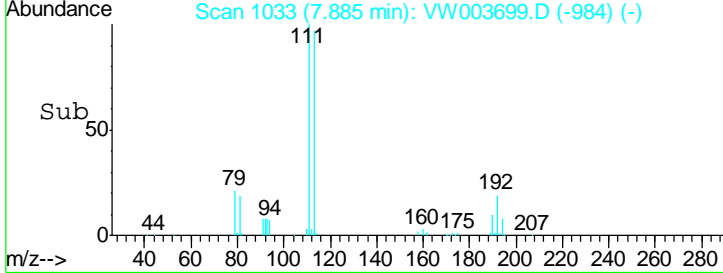
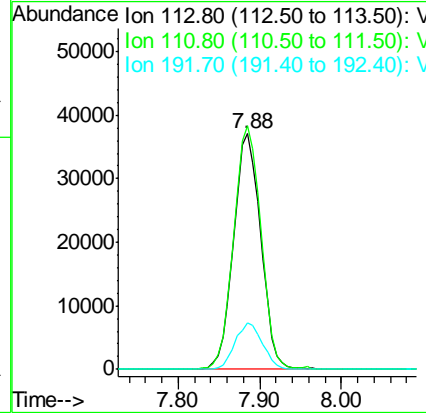
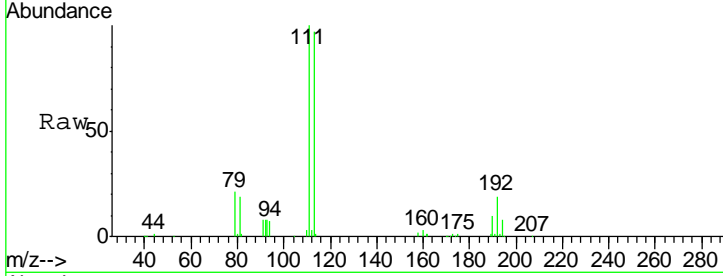




#35
 Dibromofluoromethane
 Concen: 44.410 ug/l
 RT: 7.88 min Scan# 1033
 Delta R.T. 0.00 min
 Lab File: VW003699.D
 Acq: 03 Jul 2018 15:25

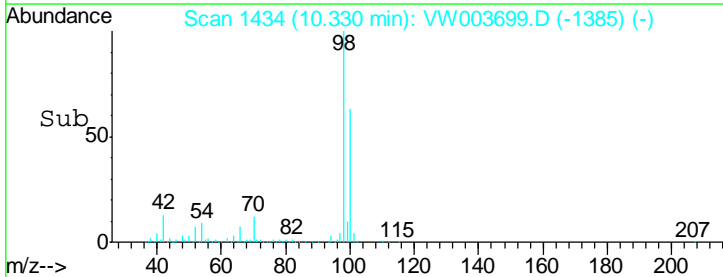
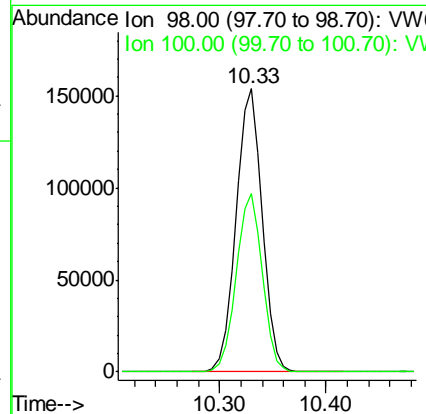
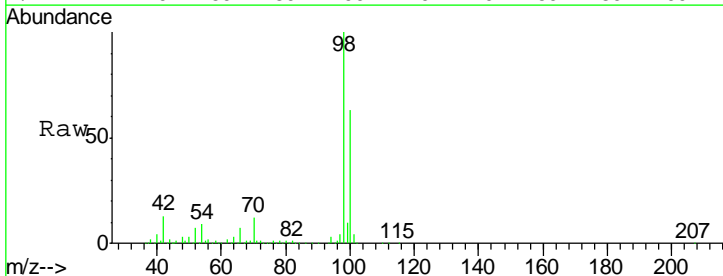
Instrument : MSVOA_W
 ClientSampled : CL-01-062918-C

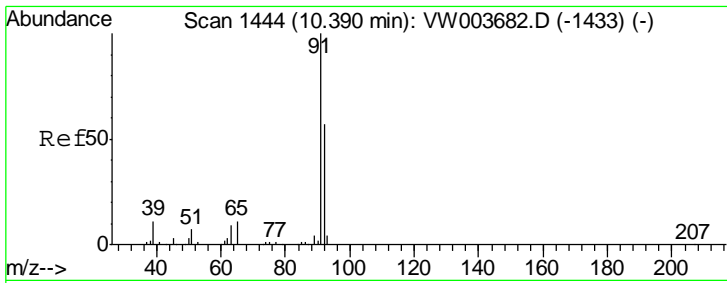
Tgt Ion	Resp	Lower	Upper
113	85015		
111	103.7	82.4	123.6
192	20.0	15.8	23.6



#50
 Toluene-d8
 Concen: 35.225 ug/l
 RT: 10.33 min Scan# 1434
 Delta R.T. 0.00 min
 Lab File: VW003699.D
 Acq: 03 Jul 2018 15:25

Tgt Ion	Resp	Lower	Upper
98	264715		
100	62.8	50.8	76.2

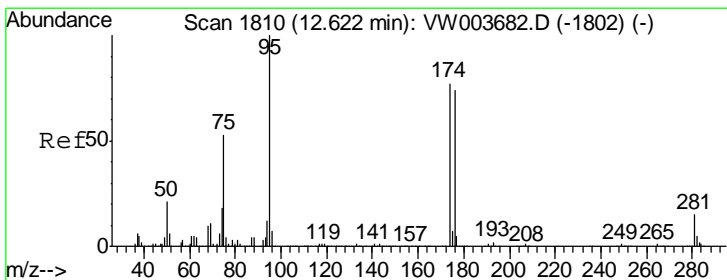
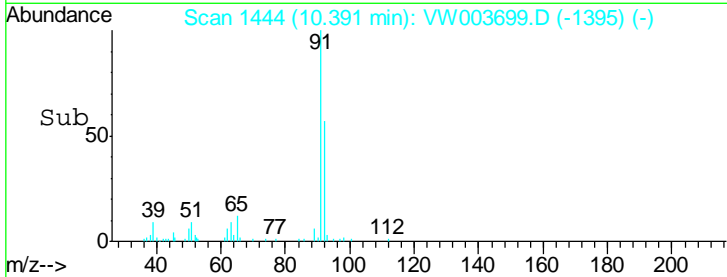
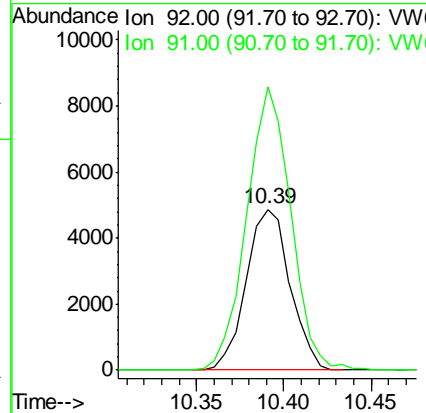
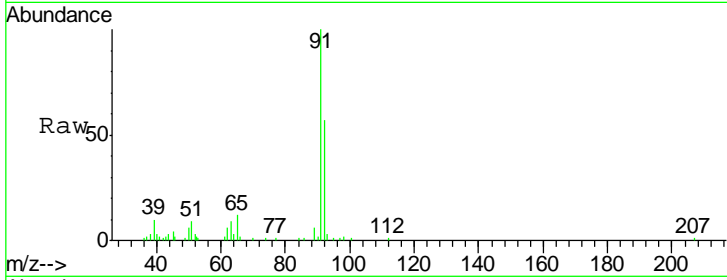




#52
 Toluene
 Concen: 1.643 ug/l
 RT: 10.39 min Scan# 1444
 Delta R.T. 0.00 min
 Lab File: VW003699.D
 Acq: 03 Jul 2018 15:25

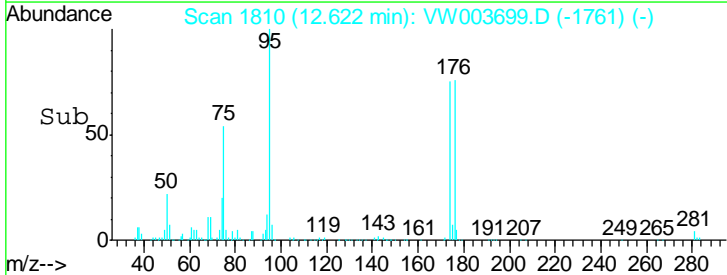
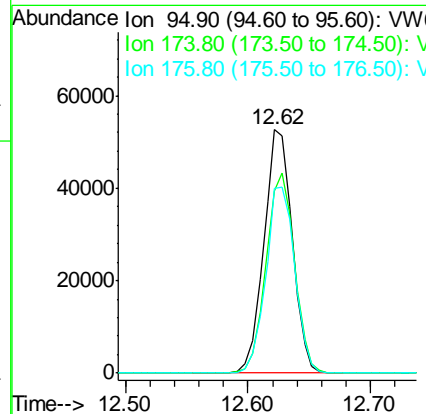
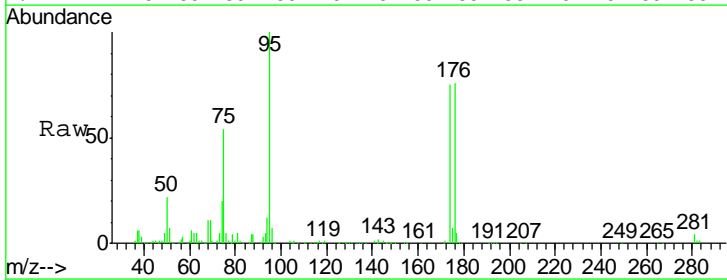
Instrument :
 MSVOA_W
 ClientSampleId :
 CL-01-062918-C

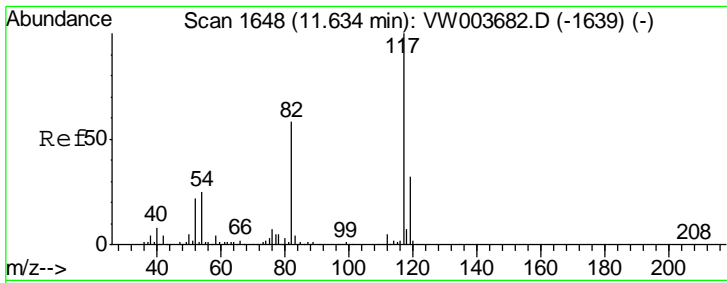
Tgt Ion	Resp	Lower	Upper
92	8491		
92	100		
91	177.3	140.2	210.2



#62
 4-Bromofluorobenzene
 Concen: 31.426 ug/l
 RT: 12.62 min Scan# 1810
 Delta R.T. 0.00 min
 Lab File: VW003699.D
 Acq: 03 Jul 2018 15:25

Tgt Ion	Resp	Lower	Upper
95	84845		
95	100		
174	82.4	0.0	161.2
176	78.5	0.0	155.0

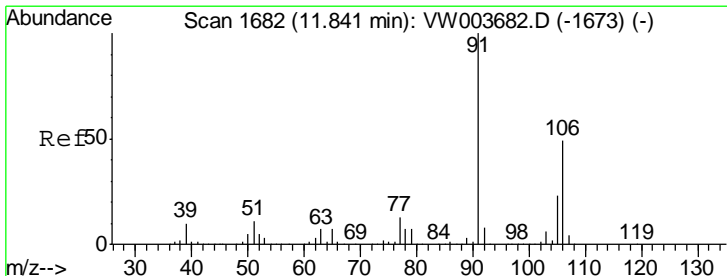
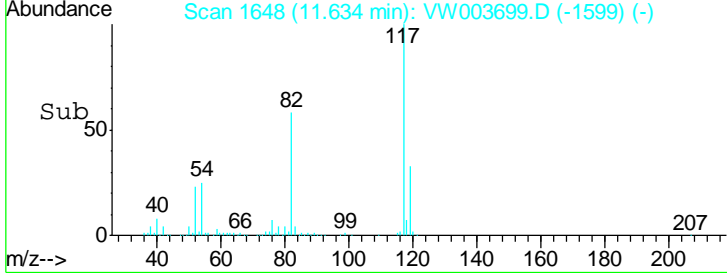
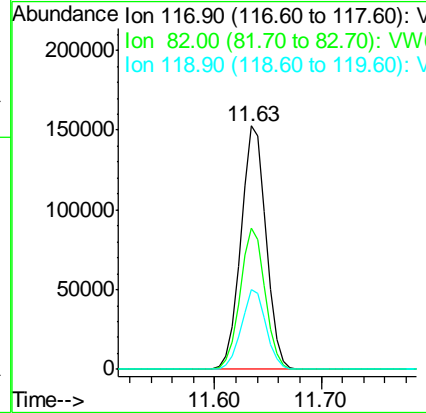
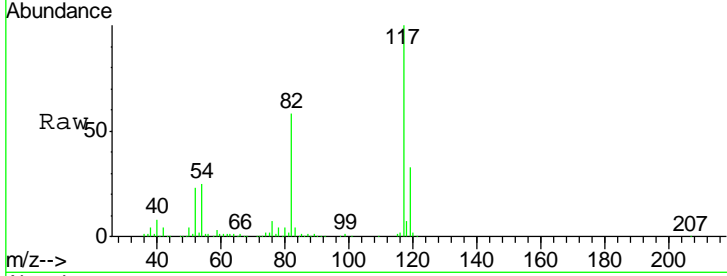




#63
 Chlorobenzene-d5
 Concen: 50.000 ug/l
 RT: 11.63 min Scan# 1648
 Delta R.T. 0.00 min
 Lab File: VW003699.D
 Acq: 03 Jul 2018 15:25

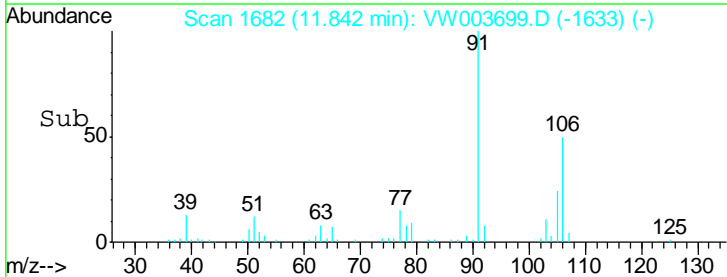
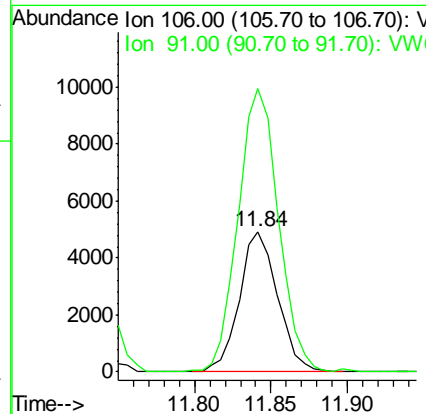
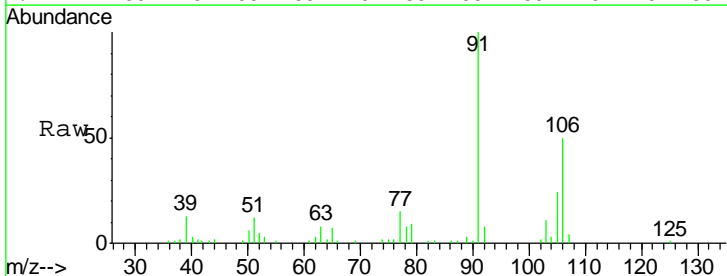
Instrument : MSVOA_W
 ClientSampled : CL-01-062918-C

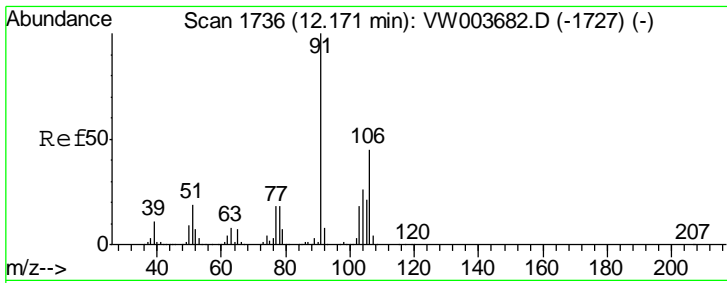
Tgt Ion	Resp	Lower	Upper
117	252660		
82	57.8	46.0	69.0
119	32.9	25.4	38.0



#68
 m/p-Xylenes
 Concen: 2.412 ug/l
 RT: 11.84 min Scan# 1682
 Delta R.T. 0.00 min
 Lab File: VW003699.D
 Acq: 03 Jul 2018 15:25

Tgt Ion	Resp	Lower	Upper
106	8538		
91	213.7	163.7	245.5

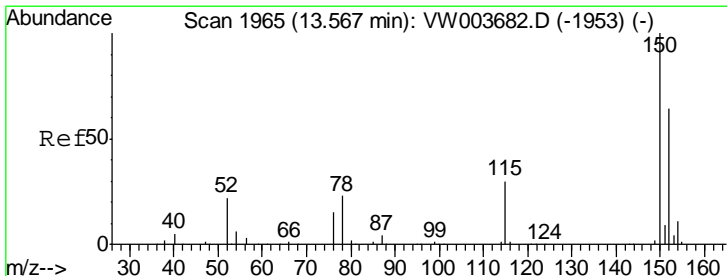
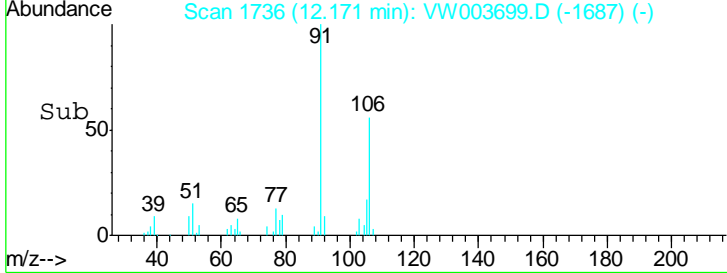
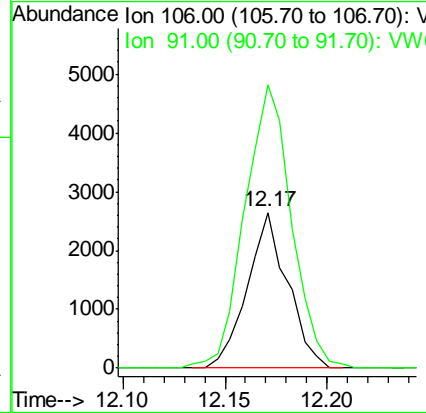
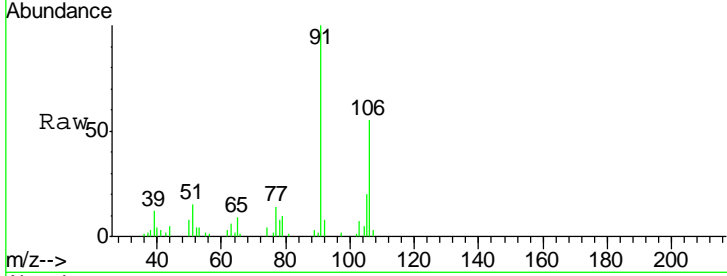




#69
 o-Xylene
 Concen: 1.109 ug/l
 RT: 12.17 min Scan# 1736
 Delta R.T. 0.00 min
 Lab File: VW003699.D
 Acq: 03 Jul 2018 15:25

Instrument :
 MSVOA_W
 ClientSampled :
 CL-01-062918-C

Tot Ion:106 Resp: 3629
 Ion Ratio Lower Upper
 106 100
 91 210.9 109.3 327.8



#72
 1,4-Dichlorobenzene-d4
 Concen: 50.000 ug/l
 RT: 13.57 min Scan# 1965
 Delta R.T. 0.00 min
 Lab File: VW003699.D
 Acq: 03 Jul 2018 15:25

Tgt Ion:152 Resp: 99574
 Ion Ratio Lower Upper
 152 100
 115 58.3 29.3 88.0
 150 157.7 0.0 352.0

