

Data Path : Z:\VOASRV\HPCHEM1\MSVOA\_W\DATA\VW070818\  
 Data File : VW003761.D  
 Acq On : 07 Jul 2018 11:10  
 Operator : SY/AP  
 Sample : VSTD10091  
 Misc : 5.00G/10ML/MSVOA\_W/SOIL  
 ALS Vial : 1 Sample Multiplier: 1

Instrument :  
 MSVOA\_W  
 ClientSampleId :  
 VSTD10091

Quant Time: Jul 09 04:18:58 2018  
 Quant Method : Z:\VOASRV\HPCHEM1\MSVOA\_W\METHOD\SOM2WLM070818S.M  
 Quant Title : VOC Analysis  
 QLast Update : Mon Jul 09 04:17:35 2018  
 Response via : Initial Calibration

| Internal Standards         | R.T.  | QIon | Response | Conc  | Units | Dev(Min) |
|----------------------------|-------|------|----------|-------|-------|----------|
| 1) 1,4-Difluorobenzene     | 8.85  | 114  | 414255   | 25.00 | ug/L  | 0.00     |
| 28) Chlorobenzene-d5       | 11.63 | 117  | 389782   | 25.00 | ug/L  | 0.00     |
| 60) 1,4-Dichlorobenzene-d4 | 13.57 | 152  | 199731   | 25.00 | ug/L  | 0.00     |

## System Monitoring Compounds

|                                |       |     |         |        |      |      |
|--------------------------------|-------|-----|---------|--------|------|------|
| 4) Vinyl Chloride-d3           | 2.35  | 65  | 447428  | 80.49  | ug/L | 0.00 |
| 7) Chloroethane-d5             | 2.89  | 69  | 401350  | 94.65  | ug/L | 0.00 |
| 10) 1,1-Dichloroethene-d2      | 4.01  | 63  | 1003549 | 94.87  | ug/L | 0.00 |
| 20) 2-Butanone-d5              | 7.09  | 46  | 357866  | 203.94 | ug/L | 0.00 |
| 24) Chloroform-d               | 7.65  | 84  | 1024305 | 90.81  | ug/L | 0.00 |
| 26) 1,2-Dichloroethane-d4      | 8.31  | 65  | 606657  | 89.80  | ug/L | 0.00 |
| 29) Benzene-d6                 | 8.28  | 84  | 1953816 | 94.63  | ug/L | 0.00 |
| 33) 1,2-Dichloropropane-d6     | 9.28  | 67  | 642570  | 95.75  | ug/L | 0.00 |
| 37) Toluene-d8                 | 10.33 | 98  | 1885874 | 96.40  | ug/L | 0.00 |
| 38) trans-1,3-Dichloropropene- | 10.58 | 79  | 308401  | 100.29 | ug/L | 0.00 |
| 39) 2-Hexanone-d5              | 10.93 | 63  | 291881  | 227.06 | ug/L | 0.00 |
| 48) 1,1,2,2-Tetrachloroethane- | 12.70 | 84  | 591585  | 94.26  | ug/L | 0.00 |
| 61) 1,2-Dichlorobenzene-d4     | 13.86 | 152 | 691418  | 91.57  | ug/L | 0.00 |

## Target Compounds

|                                |       |     |         |         |        | Qvalue |
|--------------------------------|-------|-----|---------|---------|--------|--------|
| 2) Dichlorodifluoromethane     | 2.00  | 85  | 163697  | 46.459  | ug/L # | 78     |
| 3) Chloromethane               | 2.21  | 50  | 324451  | 67.348  | ug/L   | 99     |
| 5) Vinyl chloride              | 2.36  | 62  | 526716  | 74.807  | ug/L   | 99     |
| 6) Bromomethane                | 2.78  | 94  | 319860  | 79.299  | ug/L   | 99     |
| 8) Chloroethane                | 2.92  | 64  | 357251  | 92.323  | ug/L   | 100    |
| 9) Trichlorofluoromethane      | 3.25  | 101 | 287128  | 87.535  | ug/L   | 100    |
| 11) 1,1,2-Trichloro-1,2,2-trif | 4.06  | 101 | 486825  | 93.427  | ug/L   | 99     |
| 12) 1,1-Dichloroethene         | 4.03  | 96  | 482316  | 94.561  | ug/L   | 91     |
| 13) Acetone                    | 4.14  | 43  | 295598  | 152.260 | ug/L   | 100    |
| 14) Carbon disulfide           | 4.37  | 76  | 1553429 | 93.396  | ug/L   | 100    |
| 15) Methyl Acetate             | 4.68  | 43  | 305927  | 98.648  | ug/L   | 100    |
| 16) Methylene chloride         | 4.90  | 84  | 508819  | 76.622  | ug/L   | 98     |
| 17) Methyl tert-butyl Ether    | 5.43  | 73  | 1031609 | 105.979 | ug/L   | 99     |
| 18) trans-1,2-Dichloroethene   | 5.42  | 96  | 532772  | 96.340  | ug/L   | 98     |
| 19) 1,1-Dichloroethane         | 6.21  | 63  | 990907  | 92.090  | ug/L   | 99     |
| 21) 2-Butanone                 | 7.18  | 43  | 431400  | 176.739 | ug/L   | 99     |
| 22) cis-1,2-Dichloroethene     | 7.17  | 96  | 590222  | 97.298  | ug/L   | 98     |
| 23) Bromochloromethane         | 7.51  | 128 | 260915  | 91.367  | ug/L   | 99     |
| 25) Chloroform                 | 7.68  | 83  | 1016460 | 91.040  | ug/L   | 100    |
| 27) 1,2-Dichloroethane         | 8.40  | 62  | 737662  | 90.262  | ug/L   | 99     |
| 30) Cyclohexane                | 7.95  | 56  | 956735  | 105.095 | ug/L   | 100    |
| 31) 1,1,1-Trichloroethane      | 7.87  | 97  | 805876  | 92.646  | ug/L   | 99     |
| 32) Carbon tetrachloride       | 8.07  | 117 | 791827  | 93.005  | ug/L   | 100    |
| 34) Benzene                    | 8.32  | 78  | 2248419 | 95.728  | ug/L   | 100    |
| 35) Trichloroethene            | 9.09  | 95  | 596725  | 95.504  | ug/L   | 100    |
| 36) Methylcyclohexane          | 9.34  | 83  | 1070682 | 101.904 | ug/L   | 98     |
| 40) 1,2-Dichloropropane        | 9.37  | 63  | 600285  | 96.490  | ug/L   | 99     |
| 41) Bromodichloromethane       | 9.65  | 83  | 770926  | 95.297  | ug/L   | 98     |
| 42) cis-1,3-Dichloropropene    | 10.08 | 75  | 973620  | 105.054 | ug/L   | 99     |
| 43) 4-Methyl-2-pentanone       | 10.21 | 43  | 913046  | 204.109 | ug/L   | 99     |

Data Path : Z:\VOASRV\HPCHEM1\MSVOA\_W\DATA\VW070818\  
 Data File : VW003761.D  
 Acq On : 07 Jul 2018 11:10  
 Operator : SY/AP  
 Sample : VSTD10091  
 Misc : 5.00G/10ML/MSVOA\_W/SOIL  
 ALS Vial : 1 Sample Multiplier: 1

Instrument :  
 MSVOA\_W  
 ClientSampleId :  
 VSTD10091

Quant Time: Jul 09 04:18:58 2018  
 Quant Method : Z:\VOASRV\HPCHEM1\MSVOA\_W\METHOD\SOM2WLM070818S.M  
 Quant Title : VOC Analysis  
 QLast Update : Mon Jul 09 04:17:35 2018  
 Response via : Initial Calibration

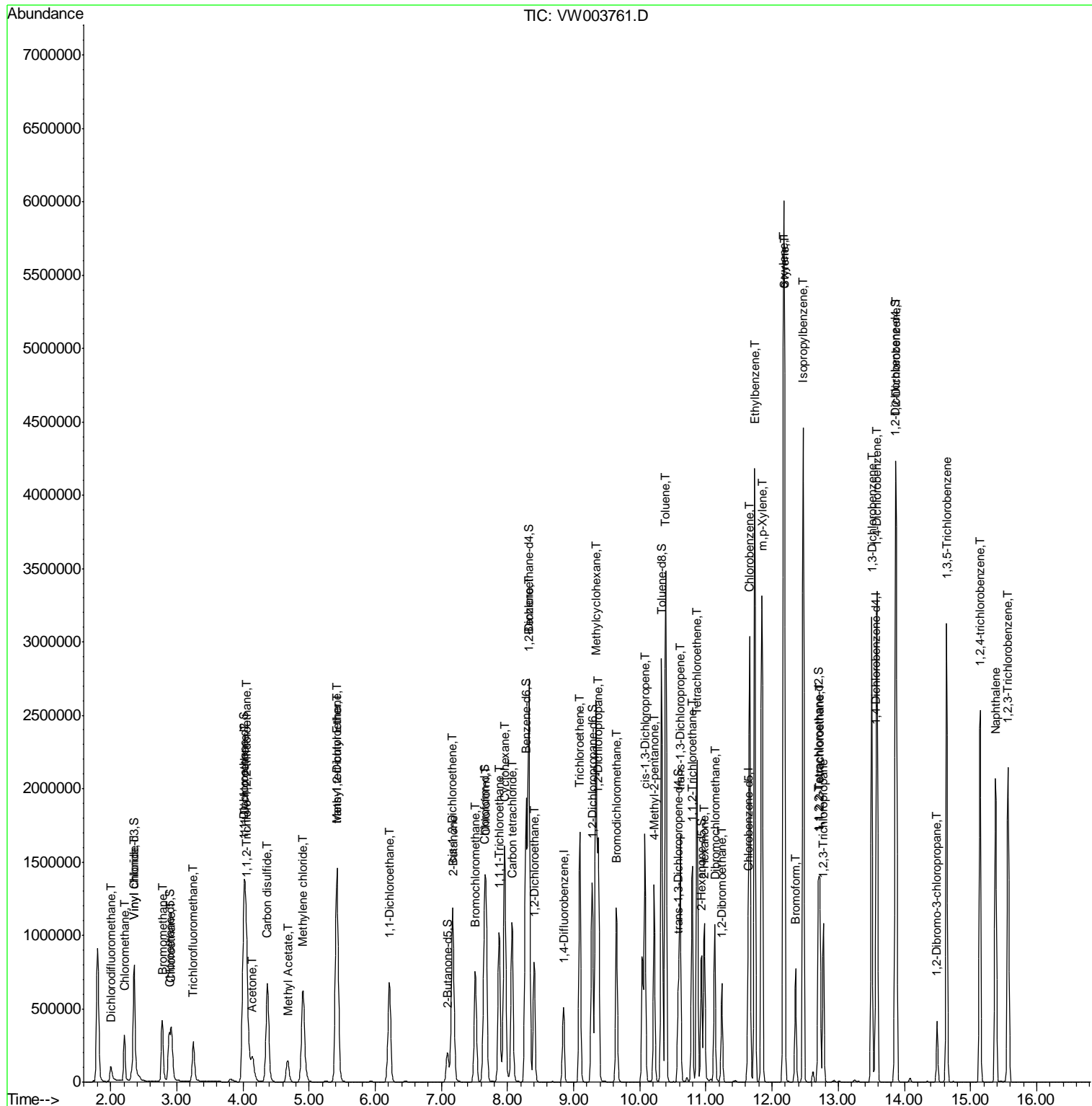
| Internal Standards             | R.T.  | QIon | Response | Conc    | Units | Dev(Min) |
|--------------------------------|-------|------|----------|---------|-------|----------|
| 44) Toluene                    | 10.39 | 91   | 2464850  | 98.185  | ug/L  | 100      |
| 45) trans-1,3-Dichloropropene  | 10.61 | 75   | 868123   | 102.490 | ug/L  | 99       |
| 46) 1,1,2-Trichloroethane      | 10.79 | 97   | 445046   | 94.077  | ug/L  | 99       |
| 47) Tetrachloroethene          | 10.87 | 164  | 481909   | 93.031  | ug/L  | 99       |
| 49) 2-Hexanone                 | 10.98 | 43   | 681793   | 198.000 | ug/L  | 98       |
| 50) Dibromochloromethane       | 11.13 | 129  | 556619   | 98.289  | ug/L  | 98       |
| 51) 1,2-Dibromoethane          | 11.24 | 107  | 445351   | 97.647  | ug/L  | 97       |
| 52) Chlorobenzene              | 11.66 | 112  | 1558527  | 94.366  | ug/L  | 99       |
| 53) Ethylbenzene               | 11.74 | 91   | 2847142  | 100.334 | ug/L  | 100      |
| 54) m,p-Xylene                 | 11.85 | 106  | 1052289  | 100.706 | ug/L  | 99       |
| 55) o-xylene                   | 12.17 | 106  | 1026969  | 104.084 | ug/L  | 99       |
| 56) Styrene                    | 12.19 | 104  | 1787866  | 103.611 | ug/L  | 99       |
| 57) Isopropylbenzene           | 12.47 | 105  | 2803515  | 103.585 | ug/L  | 100      |
| 58) 1,1,2,2-Tetrachloroethane  | 12.72 | 83   | 585987   | 93.233  | ug/L  | 98       |
| 59) 1,2,3-Trichloropropane     | 12.77 | 75   | 442276   | 94.340  | ug/L  | 99       |
| 62) Bromoform                  | 12.35 | 173  | 344066   | 96.203  | ug/L  | 99       |
| 63) 1,3-Dichlorobenzene        | 13.51 | 146  | 1232075  | 97.567  | ug/L  | 99       |
| 64) 1,4-Dichlorobenzene        | 13.59 | 146  | 1251731  | 91.550  | ug/L  | 99       |
| 65) 1,2-Dichlorobenzene        | 13.88 | 146  | 1148964  | 93.103  | ug/L  | 99       |
| 66) 1,2-Dibromo-3-chloropropan | 14.49 | 75   | 103244   | 92.520  | ug/L  | 98       |
| 67) 1,3,5-Trichlorobenzene     | 14.64 | 180  | 934447   | 93.907  | ug/L  | 100      |
| 68) 1,2,4-trichlorobenzene     | 15.15 | 180  | 789581   | 98.800  | ug/L  | 100      |
| 69) Naphthalene                | 15.38 | 128  | 1738191  | 108.651 | ug/L  | 100      |
| 70) 1,2,3-Trichlorobenzene     | 15.57 | 180  | 719486   | 95.296  | ug/L  | 99       |

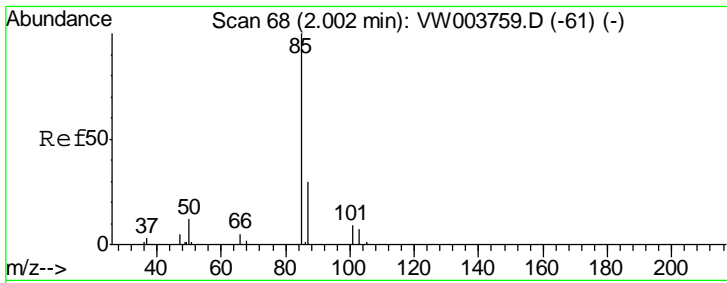
(#) = qualifier out of range (m) = manual integration (+) = signals summed

Data Path : Z:\VOASRV\HPCHEM1\MSVOA\_W\DATA\VW070818\  
 Data File : VW003761.D  
 Acq On : 07 Jul 2018 11:10  
 Operator : SY/AP  
 Sample : VSTD10091  
 Misc : 5.00G/10ML/MSVOA\_W/SOIL  
 ALS Vial : 1 Sample Multiplier: 1

Instrument :  
 MSVOA\_W  
 Client Sampled :  
 VSTD10091

Quant Time: Jul 09 04:18:58 2018  
 Quant Method : Z:\VOASRV\HPCHEM1\MSVOA\_W\METHOD\SOM2WLM070818S.M  
 Quant Title : VOC Analysis  
 QLast Update : Mon Jul 09 04:17:35 2018  
 Response via : Initial Calibration

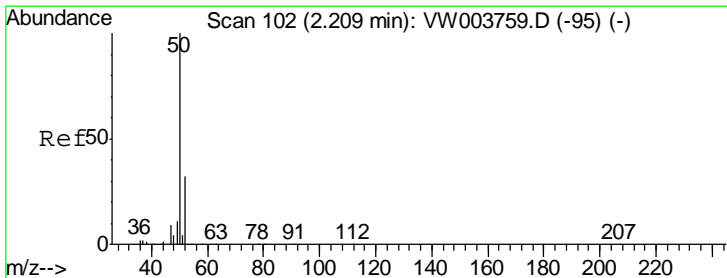
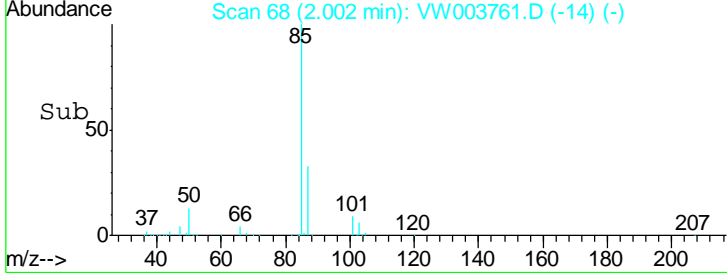
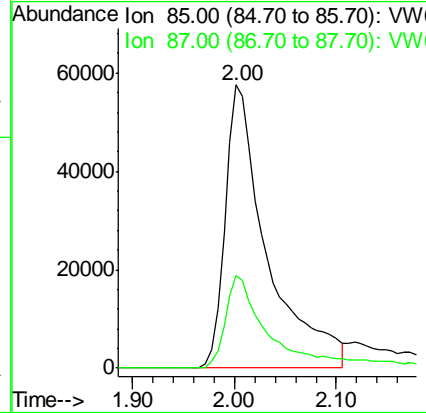
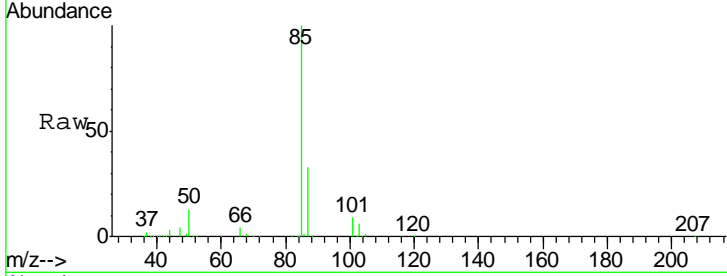




#2  
 Dichlorodifluoromethane  
 Concen: 46.459 ug/L  
 RT: 2.00 min Scan# 68  
 Delta R.T. 0.00 min  
 Lab File: VW003761.D  
 Acq: 07 Jul 2018 11:10

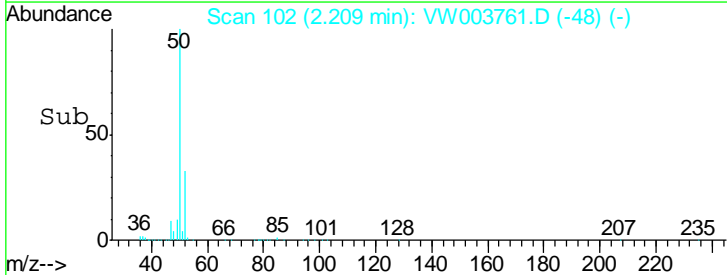
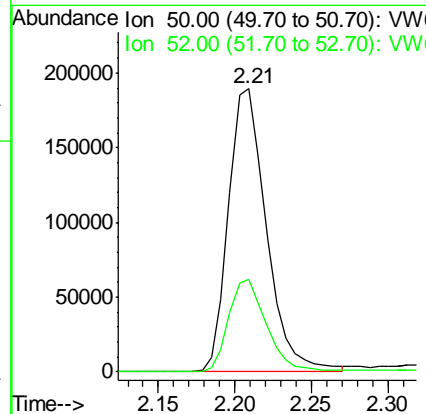
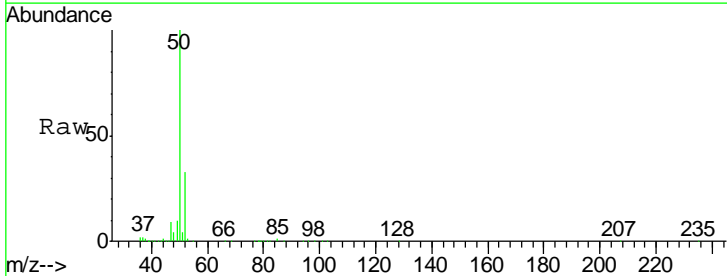
**Instrument :**  
 MSVOA\_W  
**ClientSampled :**  
 VSTD10091

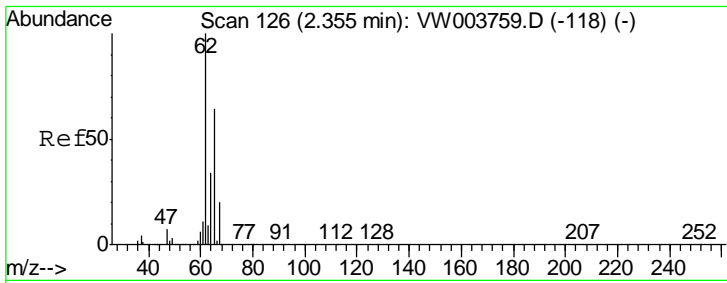
Tgt Ion: 85 Resp: 163697  
 Ion Ratio Lower Upper  
 85 100  
 87 33.9 16.4 30.4#



#3  
 Chloromethane  
 Concen: 67.348 ug/L  
 RT: 2.21 min Scan# 102  
 Delta R.T. 0.00 min  
 Lab File: VW003761.D  
 Acq: 07 Jul 2018 11:10

Tgt Ion: 50 Resp: 324451  
 Ion Ratio Lower Upper  
 50 100  
 52 32.8 22.7 42.3

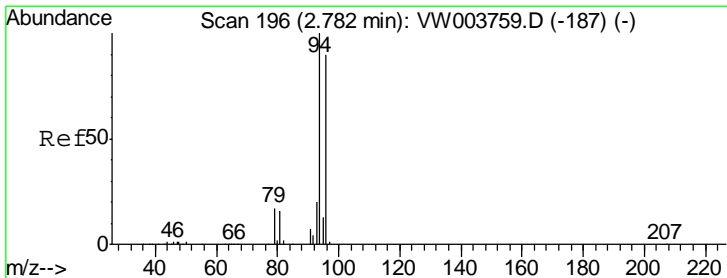
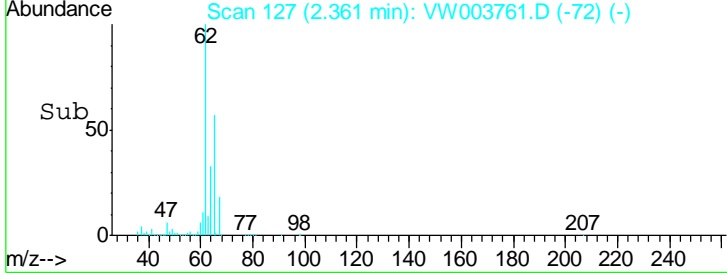
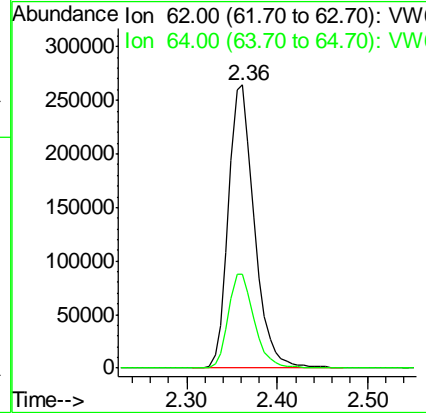
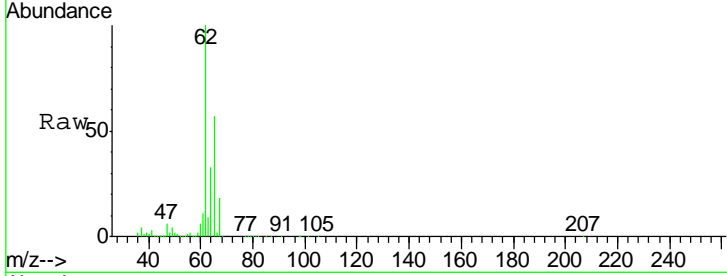




#5  
 Vinyl chloride  
 Concen: 74.807 ug/L  
 RT: 2.36 min Scan# 127  
 Delta R.T. 0.01 min  
 Lab File: VW003761.D  
 Acq: 07 Jul 2018 11:10

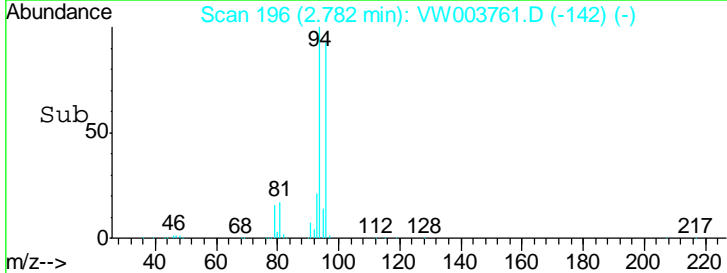
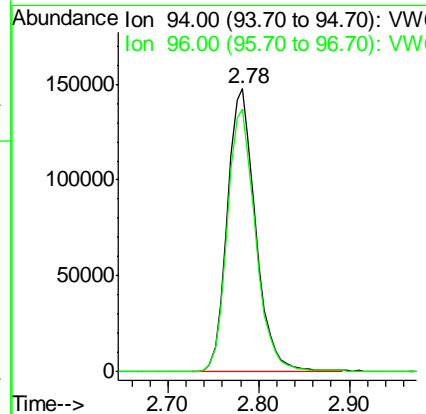
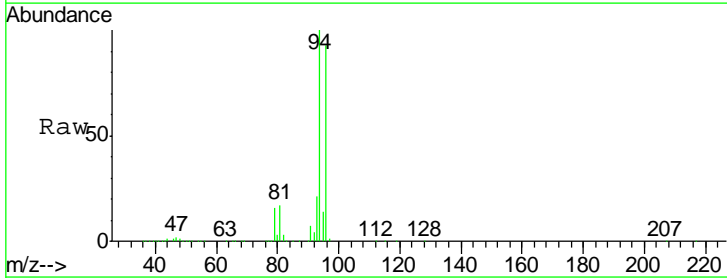
**Instrument :**  
 MSVOA\_W  
**ClientSampled :**  
 VSTD10091

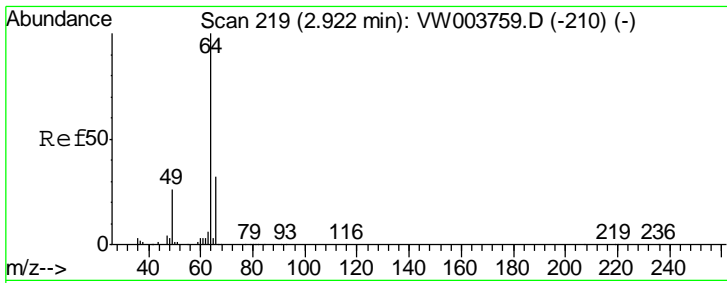
Tgt Ion: 62 Resp: 526716  
 Ion Ratio Lower Upper  
 62 100  
 64 33.1 23.4 43.6



#6  
 Bromomethane  
 Concen: 79.299 ug/L  
 RT: 2.78 min Scan# 196  
 Delta R.T. 0.00 min  
 Lab File: VW003761.D  
 Acq: 07 Jul 2018 11:10

Tgt Ion: 94 Resp: 319860  
 Ion Ratio Lower Upper  
 94 100  
 96 93.4 9.4 179.5

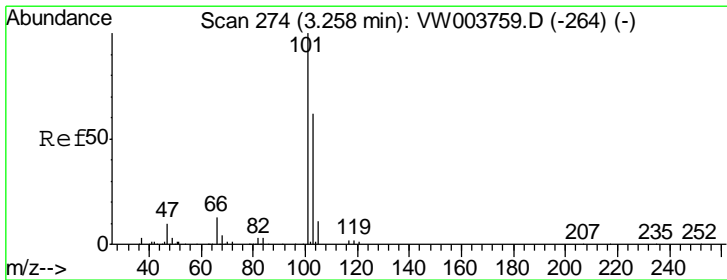
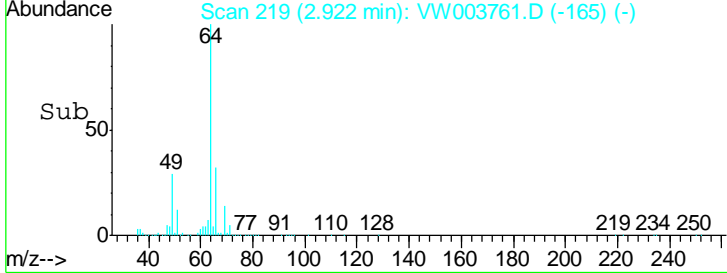
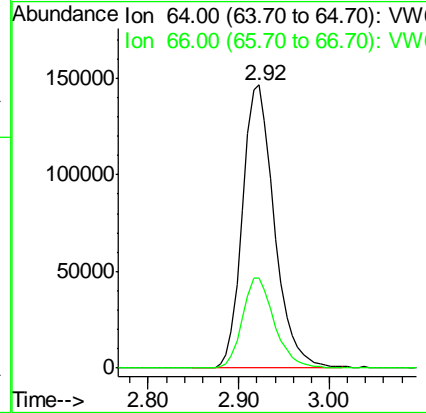
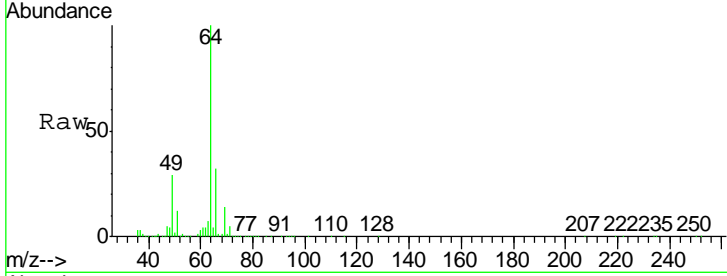




#8  
 Chloroethane  
 Concen: 92.323 ug/L  
 RT: 2.92 min Scan# 219  
 Delta R.T. 0.00 min  
 Lab File: VW003761.D  
 Acq: 07 Jul 2018 11:10

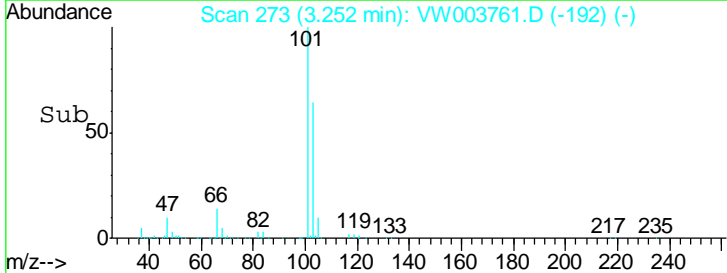
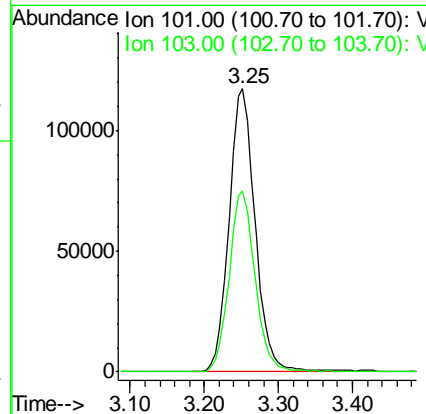
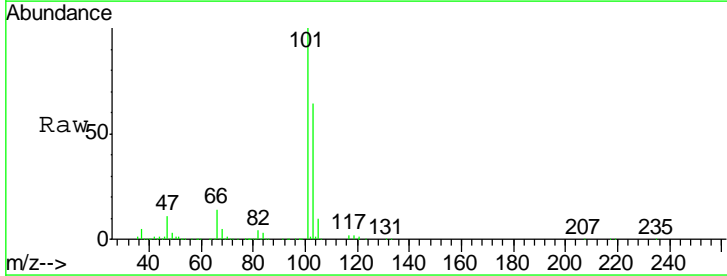
**Instrument :**  
 MSVOA\_W  
**ClientSampled :**  
 VSTD10091

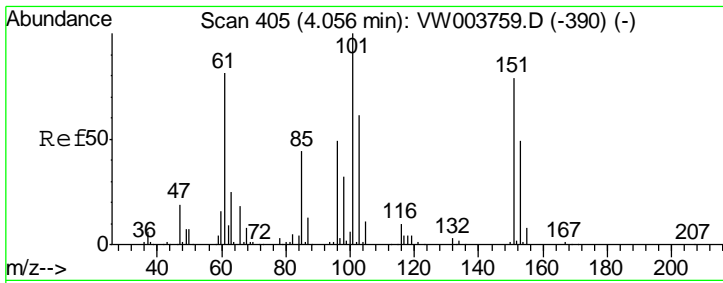
Tgt Ion: 64 Resp: 357251  
 Ion Ratio Lower Upper  
 64 100  
 66 31.7 22.1 41.1



#9  
 Trichlorofluoromethane  
 Concen: 87.535 ug/L  
 RT: 3.25 min Scan# 273  
 Delta R.T. -0.01 min  
 Lab File: VW003761.D  
 Acq: 07 Jul 2018 11:10

Tgt Ion: 101 Resp: 287128  
 Ion Ratio Lower Upper  
 101 100  
 103 63.3 44.5 82.7

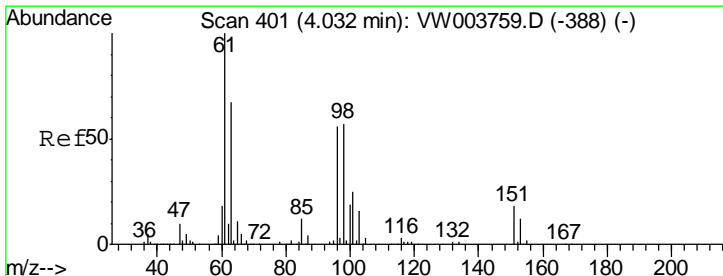
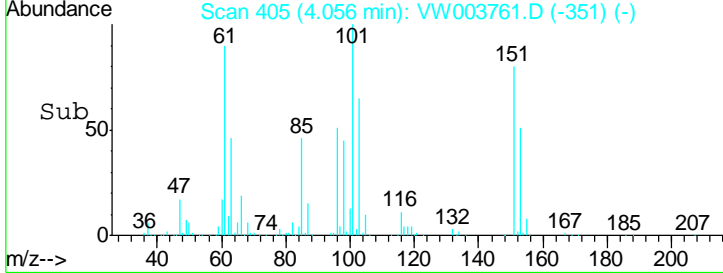
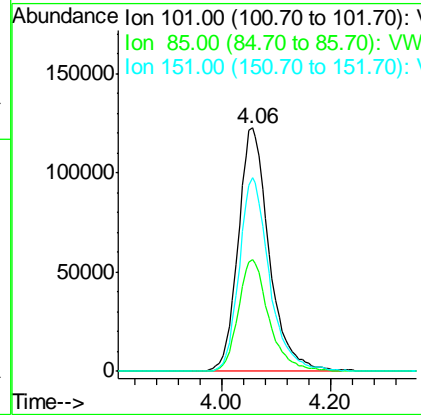
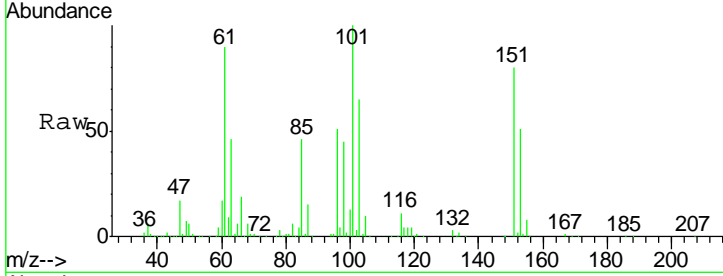




#11  
 1,1,2-Trichloro-1,2,2-trifluoroethane  
 Concen: 93.427 ug/L  
 RT: 4.06 min Scan# 405  
 Delta R.T. 0.00 min  
 Lab File: VW003761.D  
 Acq: 07 Jul 2018 11:10

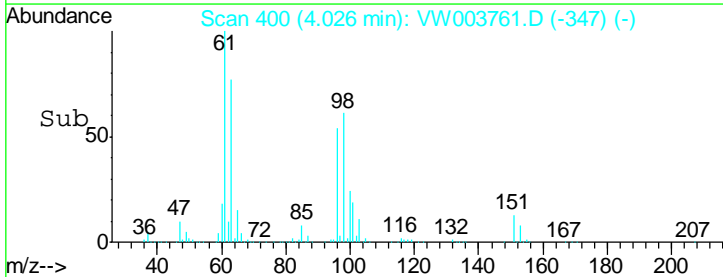
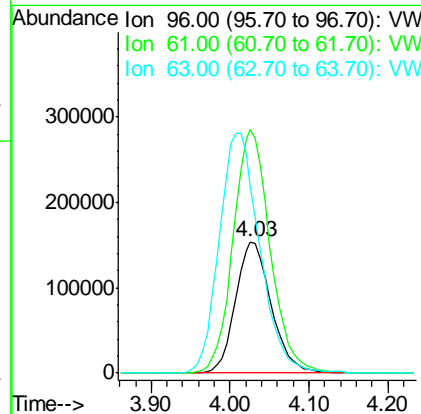
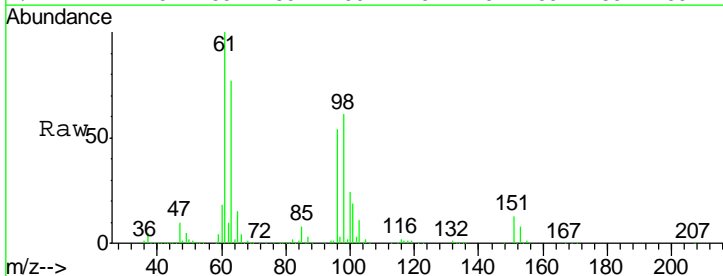
**Instrument :**  
 MSVOA\_W  
**ClientSampled :**  
 VSTD10091

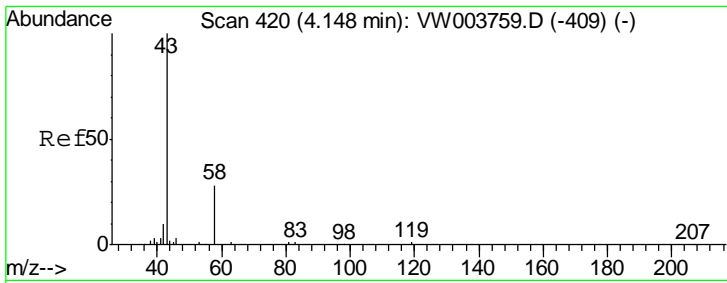
| Tgt Ion | Resp   | Lower | Upper |
|---------|--------|-------|-------|
| 101     | 486825 |       |       |
| 85      | 45.1   | 36.6  | 55.0  |
| 151     | 77.5   | 61.4  | 92.0  |



#12  
 1,1-Dichloroethene  
 Concen: 94.561 ug/L  
 RT: 4.03 min Scan# 400  
 Delta R.T. -0.01 min  
 Lab File: VW003761.D  
 Acq: 07 Jul 2018 11:10

| Tgt Ion | Resp   | Lower | Upper |
|---------|--------|-------|-------|
| 96      | 482316 |       |       |
| 61      | 185.5  | 126.2 | 234.4 |
| 63      | 142.6  | 85.8  | 159.4 |

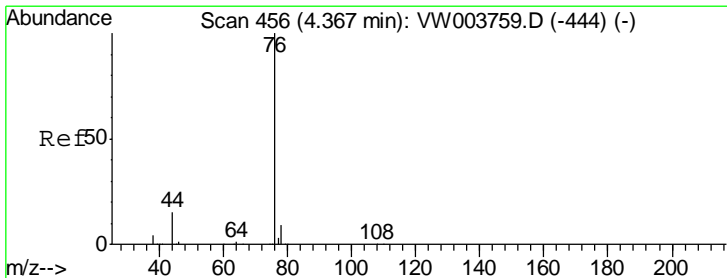
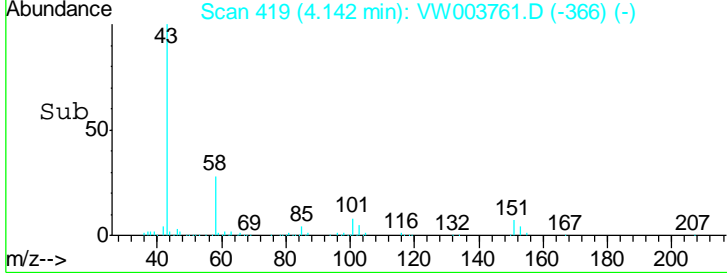
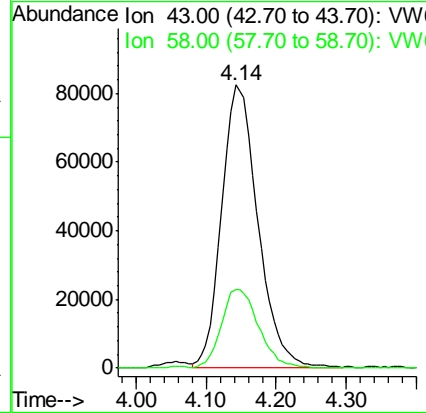
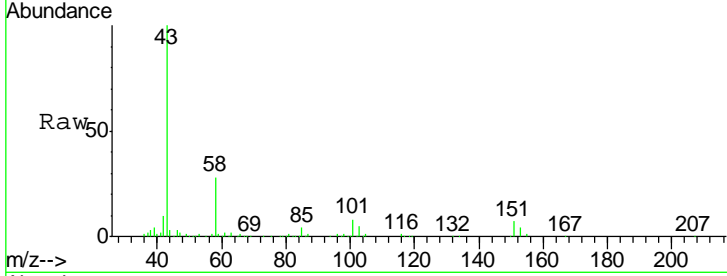




#13  
 Acetone  
 Concen: 152.260 ug/L  
 RT: 4.14 min Scan# 419  
 Delta R.T. -0.01 min  
 Lab File: VW003761.D  
 Acq: 07 Jul 2018 11:10

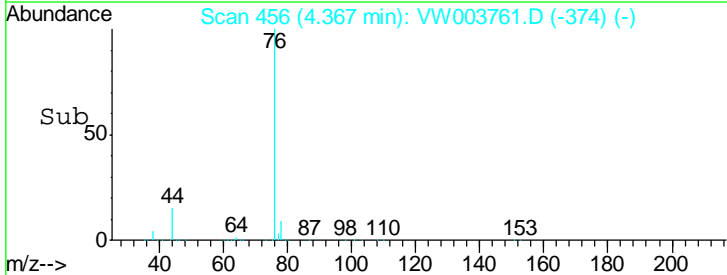
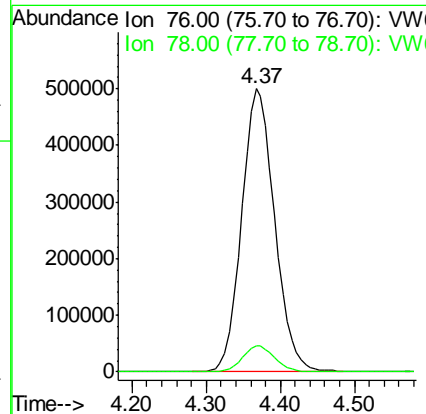
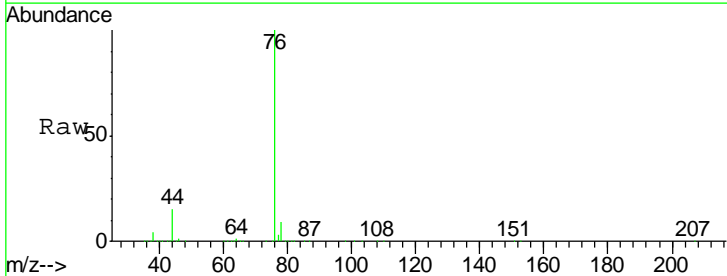
**Instrument :**  
 MSVOA\_W  
**ClientSampled :**  
 VSTD10091

Tgt Ion: 43 Resp: 295598  
 Ion Ratio Lower Upper  
 43 100  
 58 28.9 0.0 58.2

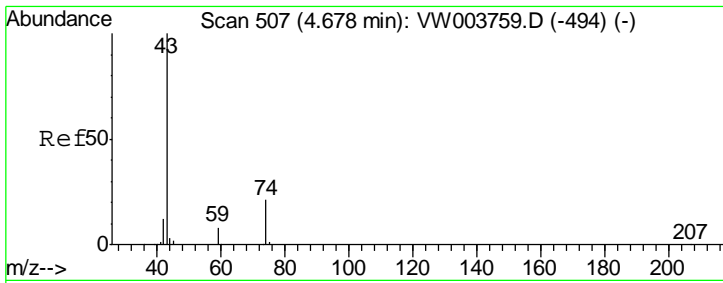


#14  
 Carbon disulfide  
 Concen: 93.396 ug/L  
 RT: 4.37 min Scan# 456  
 Delta R.T. 0.00 min  
 Lab File: VW003761.D  
 Acq: 07 Jul 2018 11:10

Tgt Ion: 76 Resp: 1553429  
 Ion Ratio Lower Upper  
 76 100  
 78 9.0 7.2 10.8



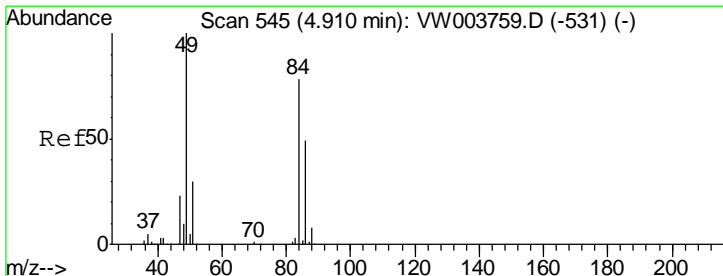
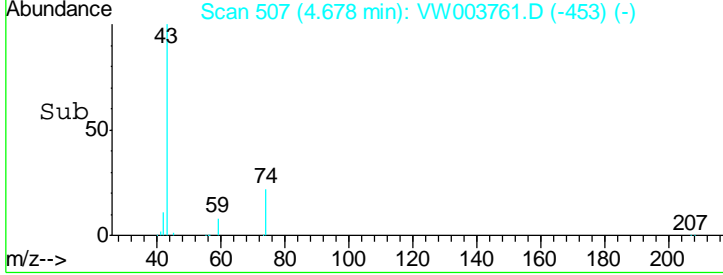
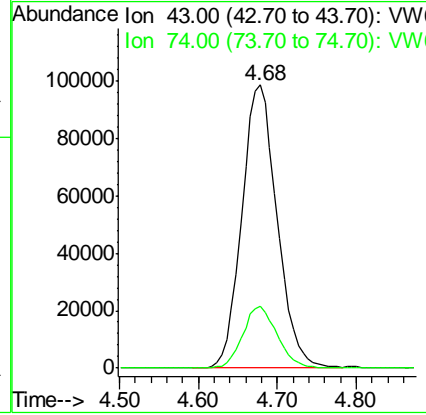
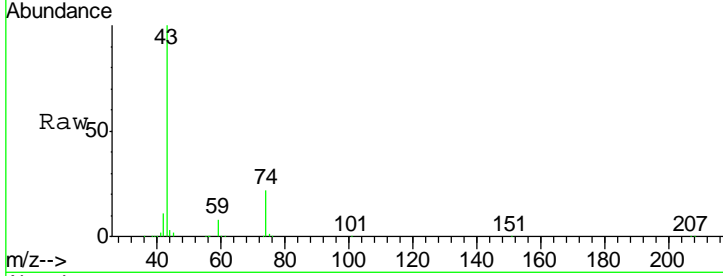




#15  
 Methyl Acetate  
 Concen: 98.648 ug/L  
 RT: 4.68 min Scan# 507  
 Delta R.T. 0.00 min  
 Lab File: VW003761.D  
 Acq: 07 Jul 2018 11:10

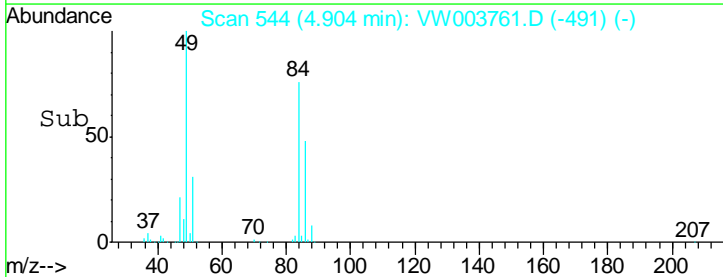
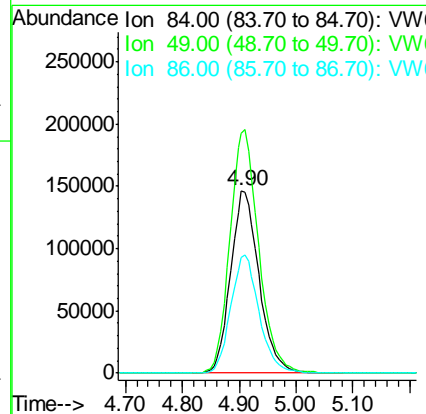
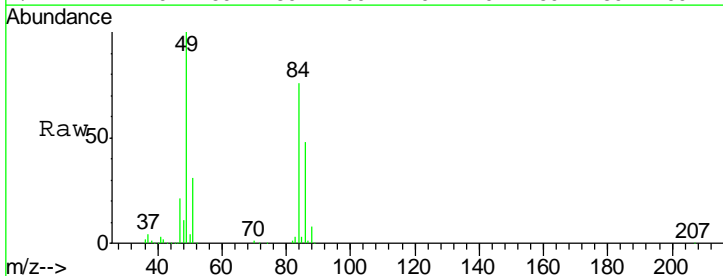
Instrument :  
 MSVOA\_W  
 ClientSampled :  
 VSTD10091

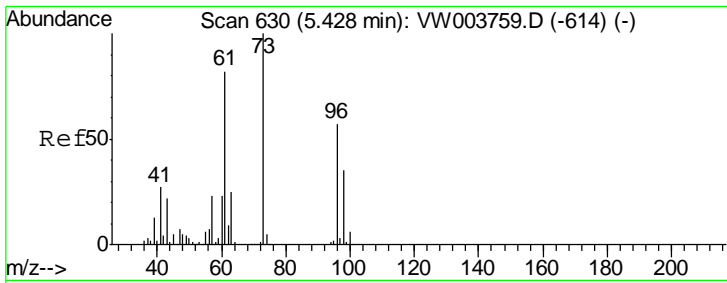
Tgt Ion: 43 Resp: 305927  
 Ion Ratio Lower Upper  
 43 100  
 74 21.3 17.0 25.4



#16  
 Methylene chloride  
 Concen: 76.622 ug/L  
 RT: 4.90 min Scan# 544  
 Delta R.T. -0.01 min  
 Lab File: VW003761.D  
 Acq: 07 Jul 2018 11:10

Tgt Ion: 84 Resp: 508819  
 Ion Ratio Lower Upper  
 84 100  
 49 131.3 89.9 166.9  
 86 63.3 43.9 81.5



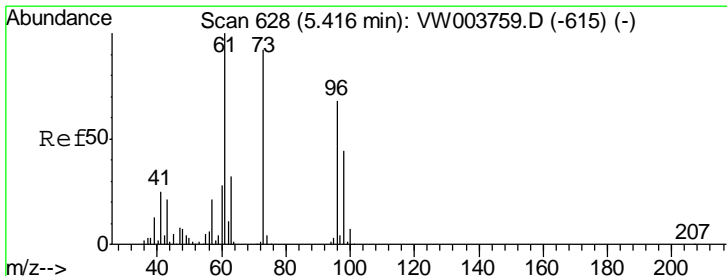
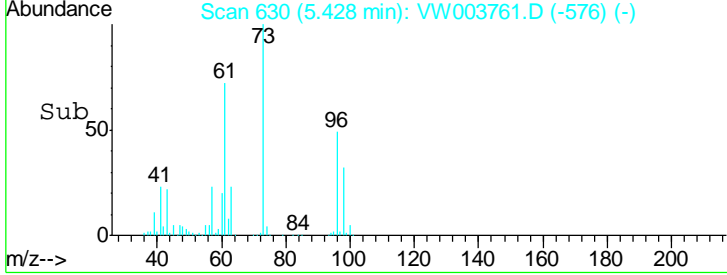
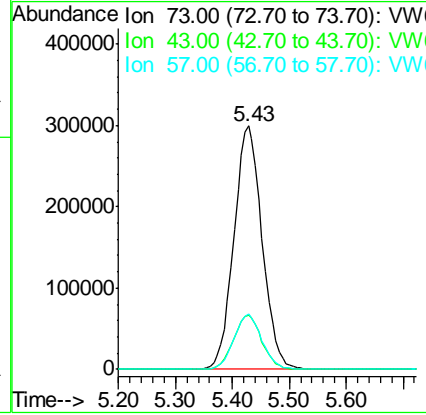
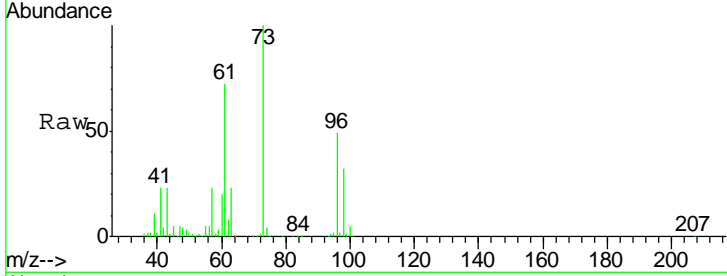


#17  
 Methyl tert-butyl Ether  
 Concen: 105.979 ug/L  
 RT: 5.43 min Scan# 630  
 Delta R.T. 0.00 min  
 Lab File: VW003761.D  
 Acq: 07 Jul 2018 11:10

**Instrument :**  
 MSVOA\_W  
**ClientSampled :**  
 VSTD10091

Tgt Ion: 73 Resp: 1031609

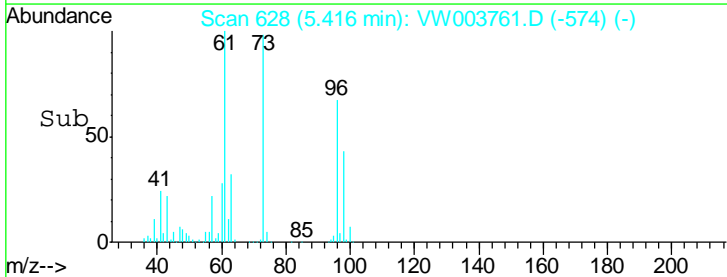
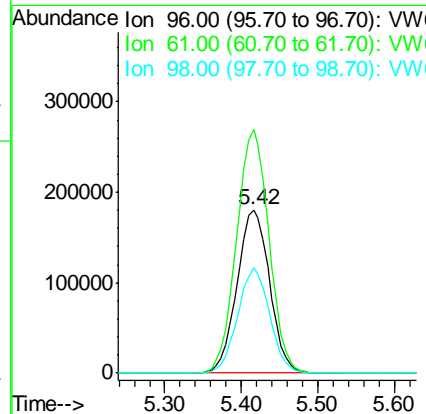
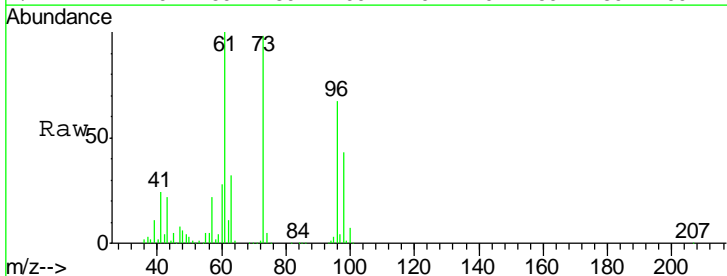
| Ion | Ratio | Lower | Upper |
|-----|-------|-------|-------|
| 73  | 100   |       |       |
| 43  | 22.3  | 18.2  | 27.4  |
| 57  | 22.6  | 18.6  | 28.0  |

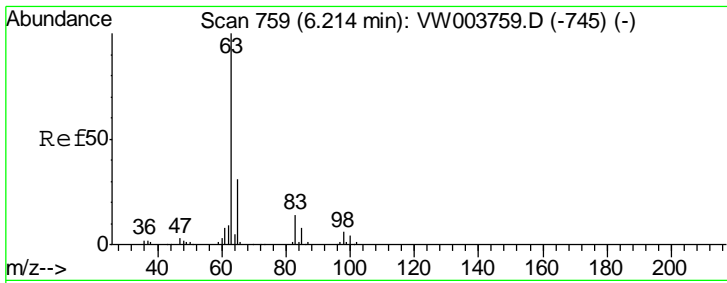


#18  
 trans-1,2-Dichloroethene  
 Concen: 96.340 ug/L  
 RT: 5.42 min Scan# 628  
 Delta R.T. 0.00 min  
 Lab File: VW003761.D  
 Acq: 07 Jul 2018 11:10

Tgt Ion: 96 Resp: 532772

| Ion | Ratio | Lower | Upper |
|-----|-------|-------|-------|
| 96  | 100   |       |       |
| 61  | 149.0 | 103.0 | 191.2 |
| 98  | 64.2  | 45.8  | 85.2  |

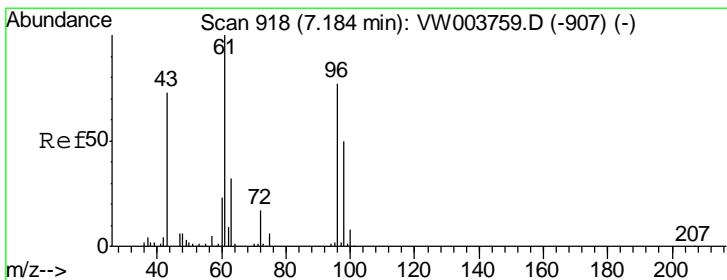
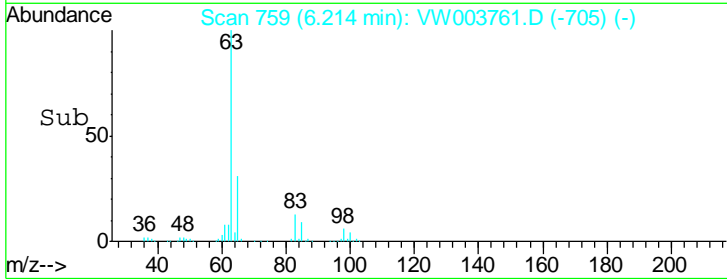
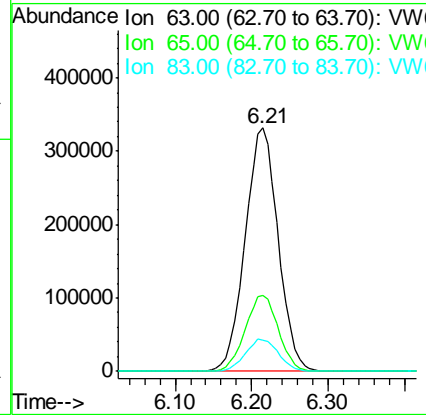
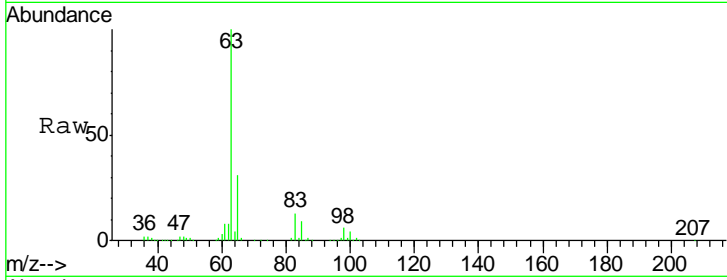




#19  
 1,1-Dichloroethane  
 Concen: 92.090 ug/L  
 RT: 6.21 min Scan# 759  
 Delta R.T. 0.00 min  
 Lab File: VW003761.D  
 Acq: 07 Jul 2018 11:10

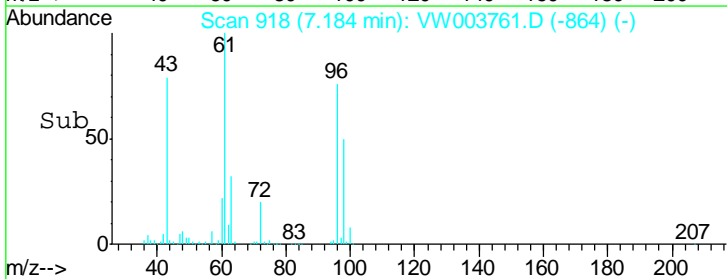
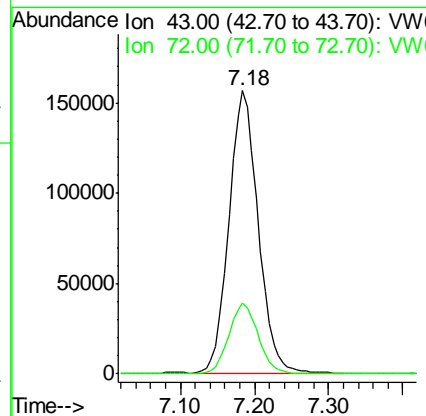
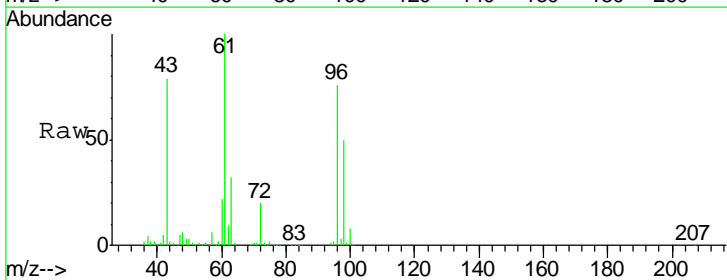
Instrument :  
 MSVOA\_W  
 ClientSampled :  
 VSTD10091

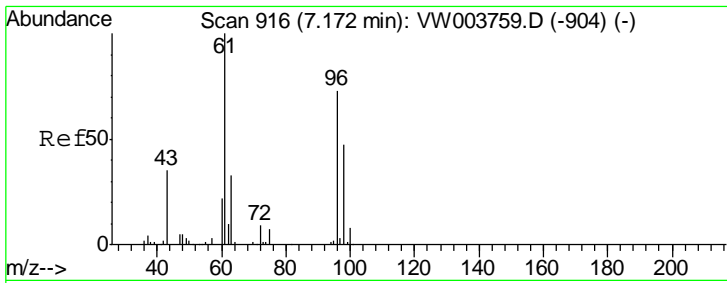
| Tgt Ion | Resp | Lower | Upper |
|---------|------|-------|-------|
| 63      | 100  |       |       |
| 65      | 31.3 | 21.9  | 40.7  |
| 83      | 12.9 | 9.6   | 17.8  |



#21  
 2-Butanone  
 Concen: 176.739 ug/L  
 RT: 7.18 min Scan# 918  
 Delta R.T. 0.00 min  
 Lab File: VW003761.D  
 Acq: 07 Jul 2018 11:10

| Tgt Ion | Resp | Lower | Upper |
|---------|------|-------|-------|
| 43      | 100  |       |       |
| 72      | 25.1 | 12.3  | 36.9  |

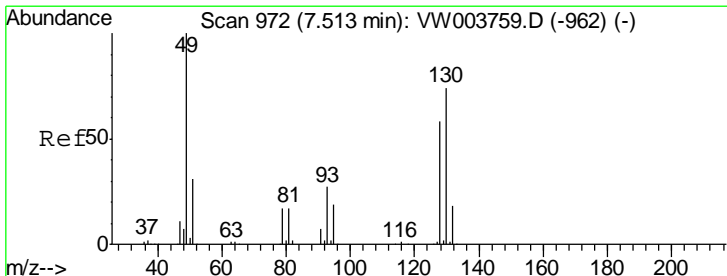
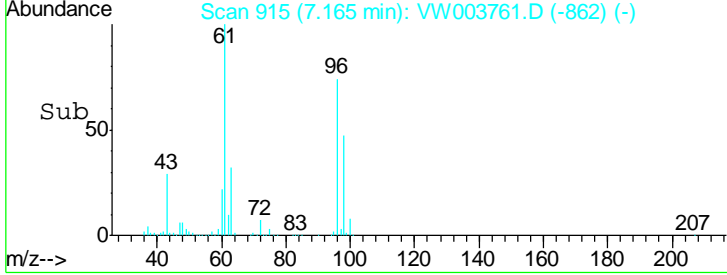
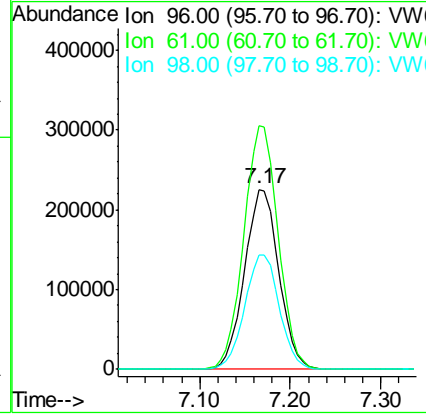
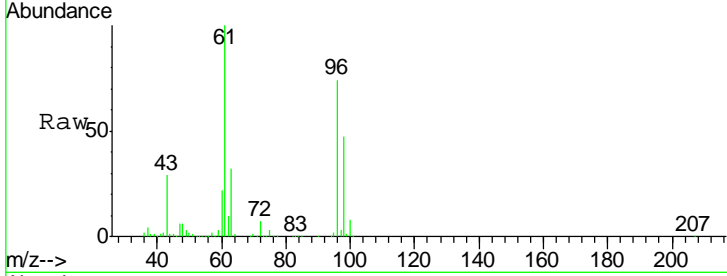




#22  
 cis-1,2-Dichloroethene  
 Concen: 97.298 ug/L  
 RT: 7.17 min Scan# 915  
 Delta R.T. -0.01 min  
 Lab File: VW003761.D  
 Acq: 07 Jul 2018 11:10

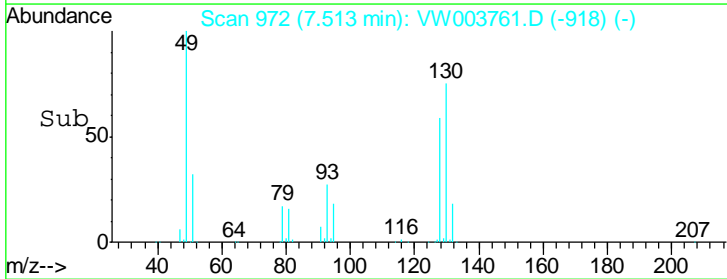
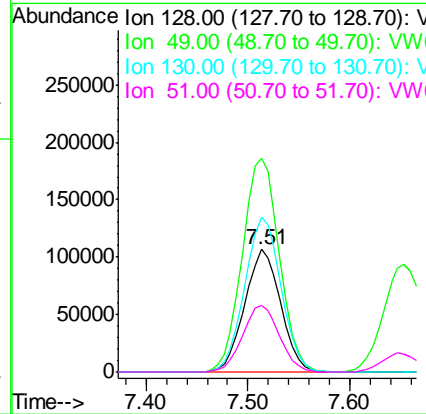
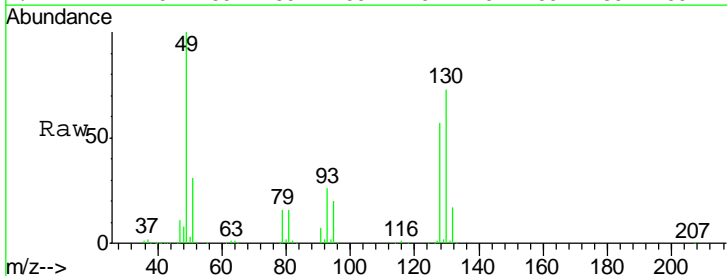
**Instrument :**  
 MSVOA\_W  
**ClientSampled :**  
 VSTD10091

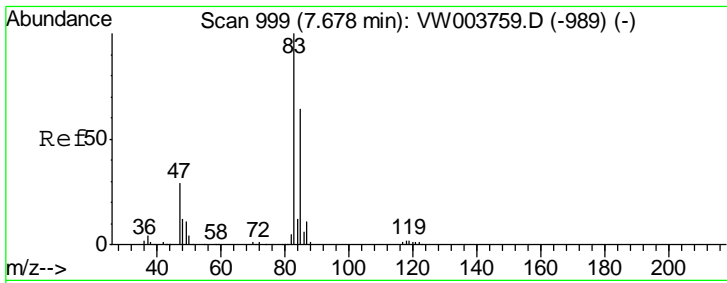
| Tgt Ion   | Resp   | Lower | Upper |
|-----------|--------|-------|-------|
| 96        | 590222 |       |       |
| Ion Ratio |        |       |       |
| 96        | 100    |       |       |
| 61        | 135.1  | 96.4  | 179.0 |
| 98        | 63.2   | 45.6  | 84.8  |



#23  
 Bromochloromethane  
 Concen: 91.367 ug/L  
 RT: 7.51 min Scan# 972  
 Delta R.T. 0.00 min  
 Lab File: VW003761.D  
 Acq: 07 Jul 2018 11:10

| Tgt Ion   | Resp   | Lower | Upper |
|-----------|--------|-------|-------|
| 128       | 260915 |       |       |
| Ion Ratio |        |       |       |
| 128       | 100    |       |       |
| 49        | 174.6  | 120.7 | 224.1 |
| 130       | 126.6  | 88.8  | 164.8 |
| 51        | 54.9   | 43.2  | 64.8  |

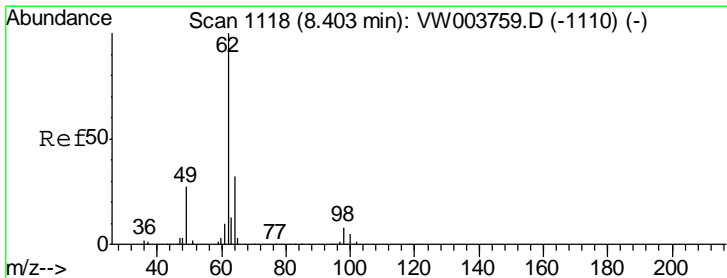
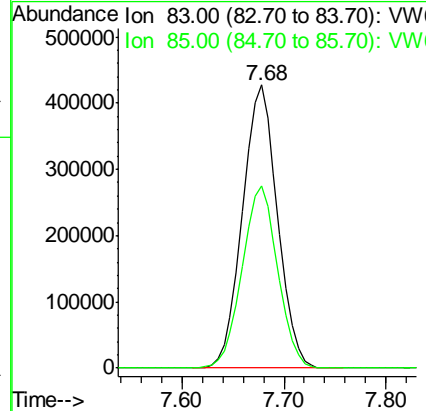
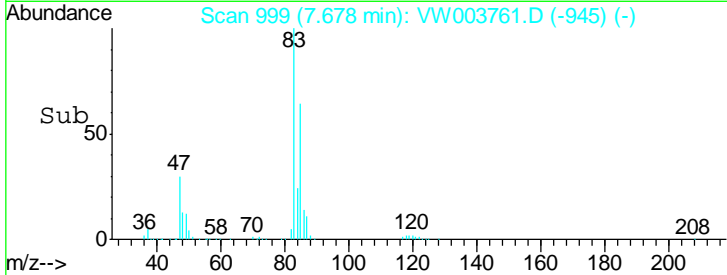
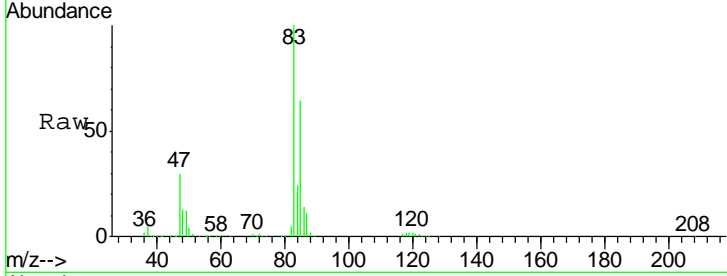




#25  
 Chloroform  
 Concen: 91.040 ug/L  
 RT: 7.68 min Scan# 999  
 Delta R.T. 0.00 min  
 Lab File: VW003761.D  
 Acq: 07 Jul 2018 11:10

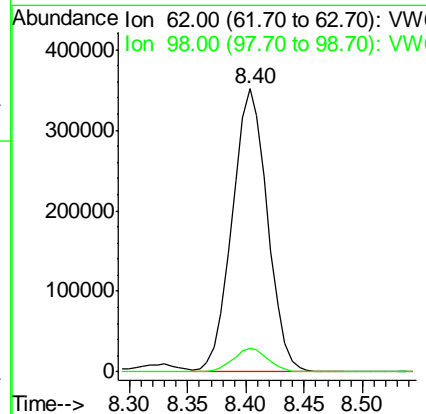
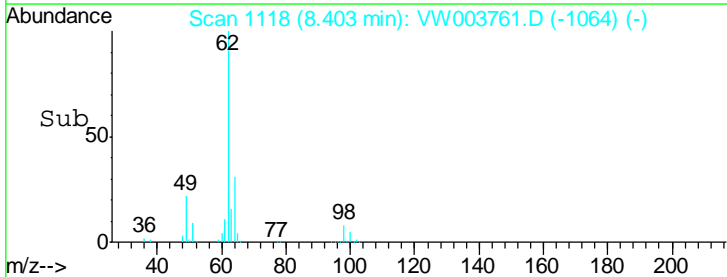
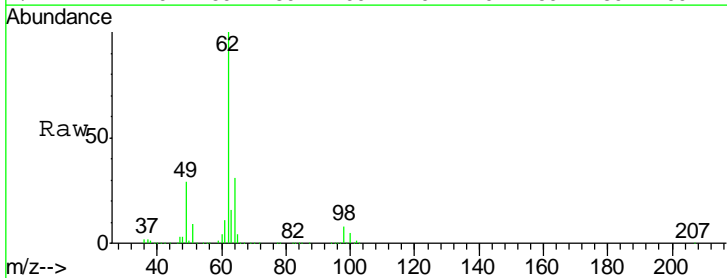
Instrument : MSVOA\_W  
 ClientSampled : VSTD10091

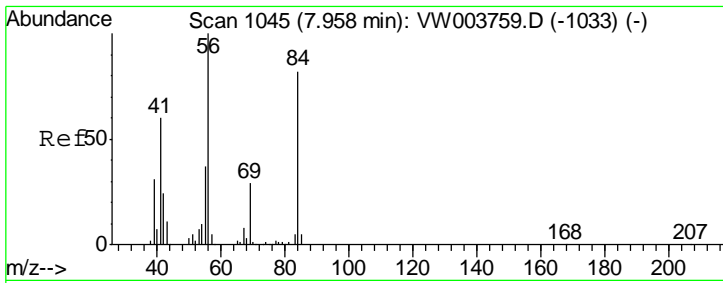
Tgt Ion: 83 Resp: 1016460  
 Ion Ratio Lower Upper  
 83 100  
 85 65.5 46.0 85.4



#27  
 1,2-Dichloroethane  
 Concen: 90.262 ug/L  
 RT: 8.40 min Scan# 1118  
 Delta R.T. 0.00 min  
 Lab File: VW003761.D  
 Acq: 07 Jul 2018 11:10

Tgt Ion: 62 Resp: 737662  
 Ion Ratio Lower Upper  
 62 100  
 98 8.4 6.4 9.6

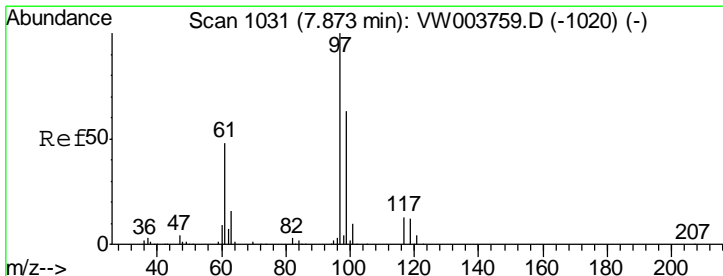
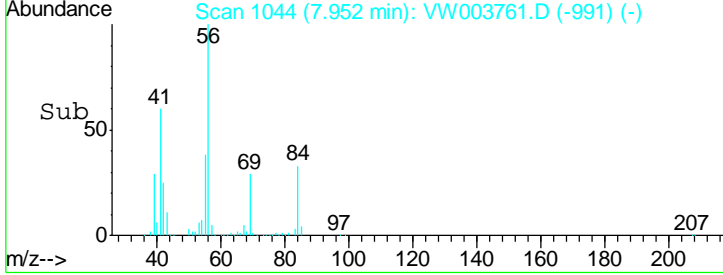
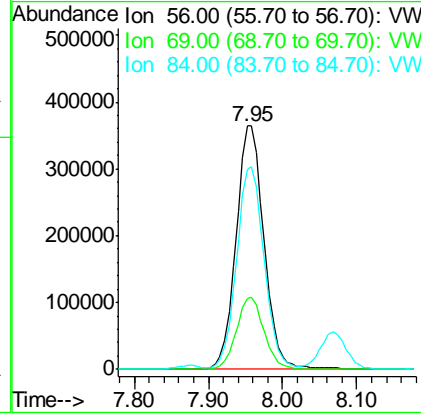
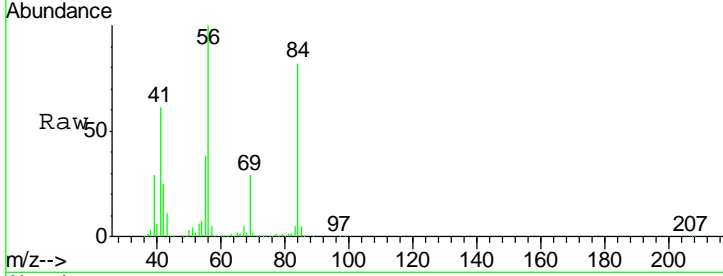




#30  
 Cyclohexane  
 Concen: 105.095 ug/L  
 RT: 7.95 min Scan# 1044  
 Delta R.T. -0.01 min  
 Lab File: VW003761.D  
 Acq: 07 Jul 2018 11:10

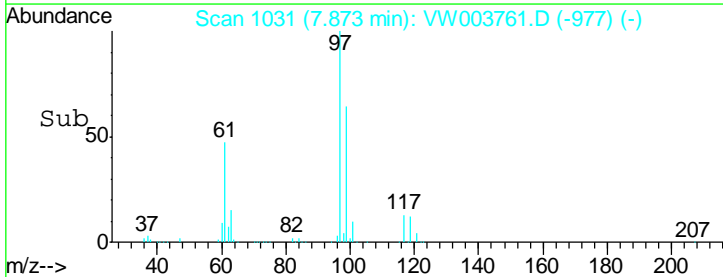
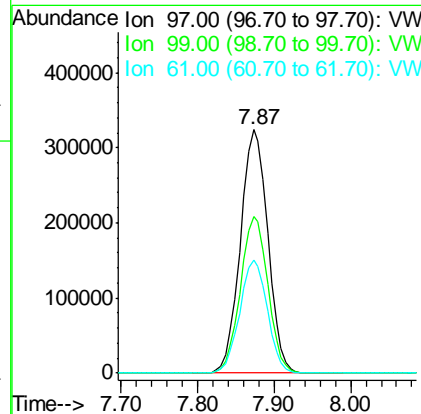
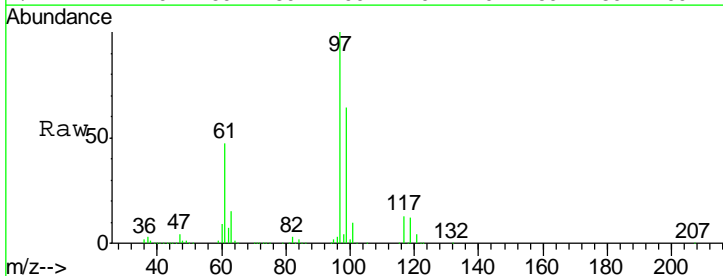
Instrument :  
 MSVOA\_W  
 ClientSampled :  
 VSTD10091

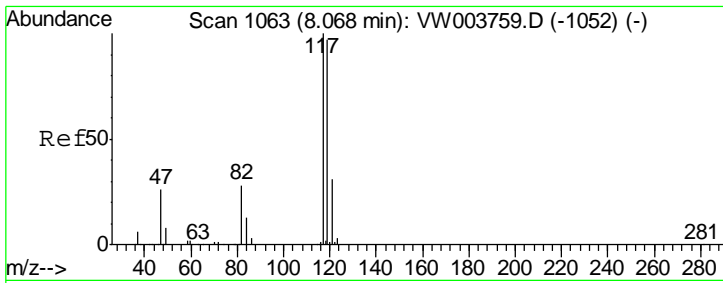
| Tgt Ion | Resp | Lower | Upper |
|---------|------|-------|-------|
| 56      | 100  |       |       |
| 69      | 29.4 | 23.7  | 35.5  |
| 84      | 82.1 | 65.8  | 98.6  |



#31  
 1,1,1-Trichloroethane  
 Concen: 92.646 ug/L  
 RT: 7.87 min Scan# 1031  
 Delta R.T. 0.00 min  
 Lab File: VW003761.D  
 Acq: 07 Jul 2018 11:10

| Tgt Ion | Resp | Lower | Upper |
|---------|------|-------|-------|
| 97      | 100  |       |       |
| 99      | 64.3 | 51.3  | 76.9  |
| 61      | 46.8 | 38.1  | 57.1  |

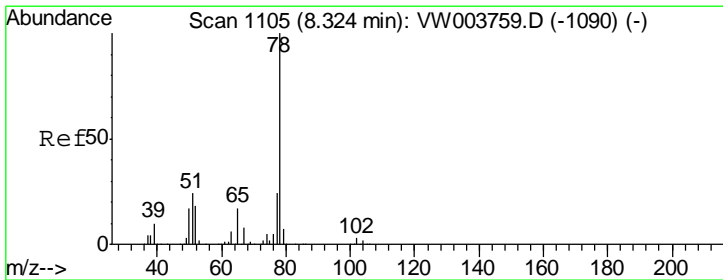
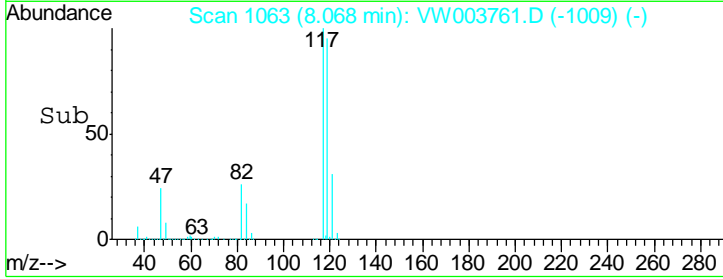
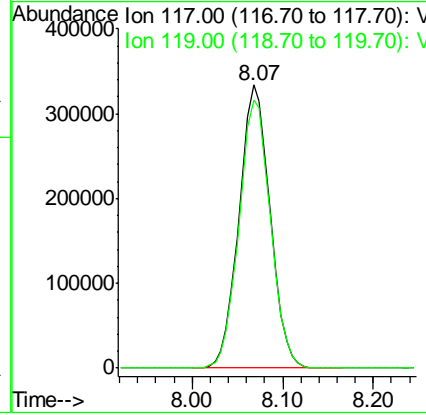
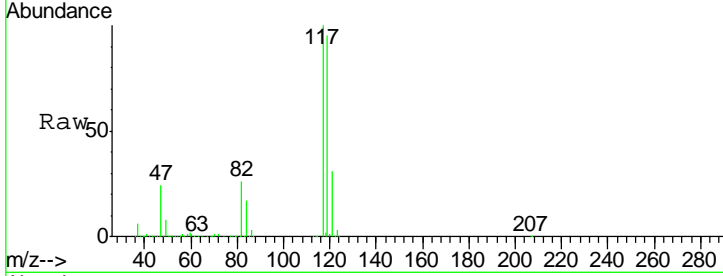




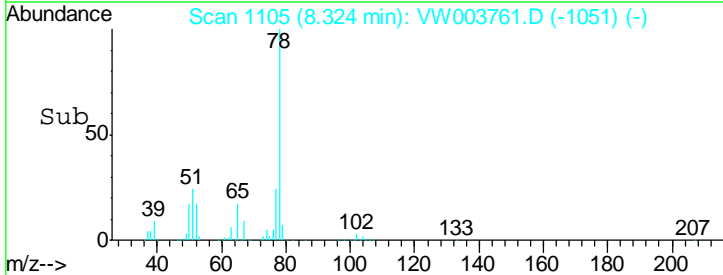
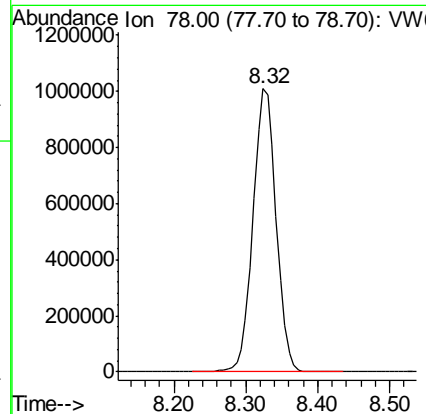
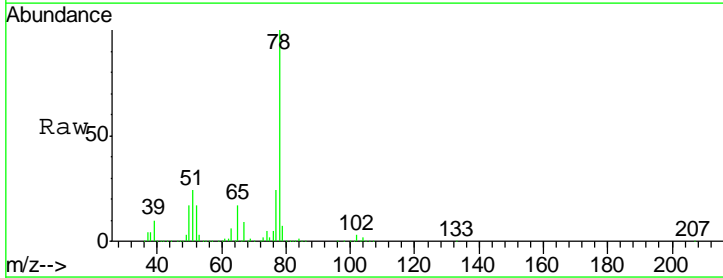
#32  
 Carbon tetrachloride  
 Concen: 93.005 ug/L  
 RT: 8.07 min Scan# 1063  
 Delta R.T. 0.00 min  
 Lab File: VW003761.D  
 Acq: 07 Jul 2018 11:10

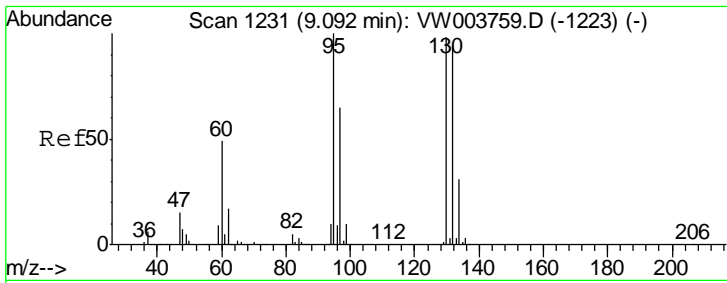
Instrument :  
 MSVOA\_W  
 ClientSampled :  
 VSTD10091

Tgt Ion: 117 Resp: 791827  
 Ion Ratio Lower Upper  
 117 100  
 119 96.1 76.8 115.2



#34  
 Benzene  
 Concen: 95.728 ug/L  
 RT: 8.32 min Scan# 1105  
 Delta R.T. 0.00 min  
 Lab File: VW003761.D  
 Acq: 07 Jul 2018 11:10  
 Tgt Ion: 78 Resp: 2248419

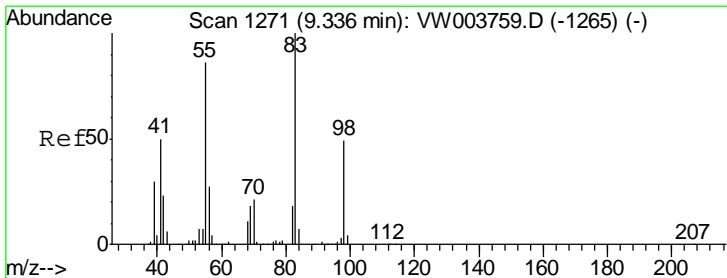
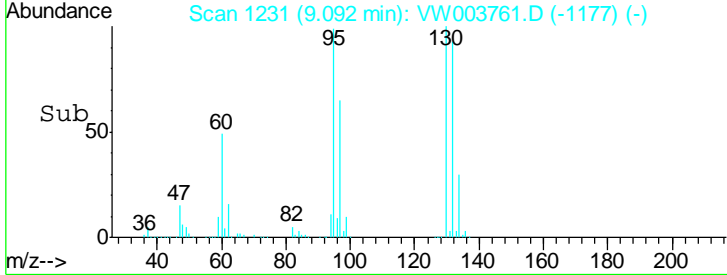
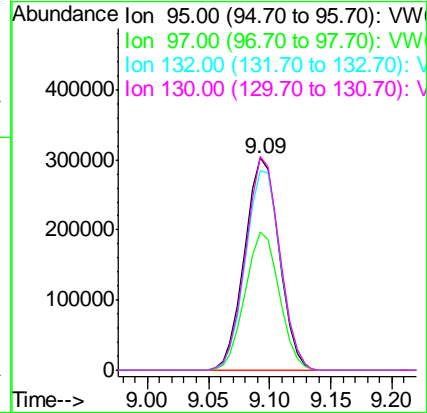
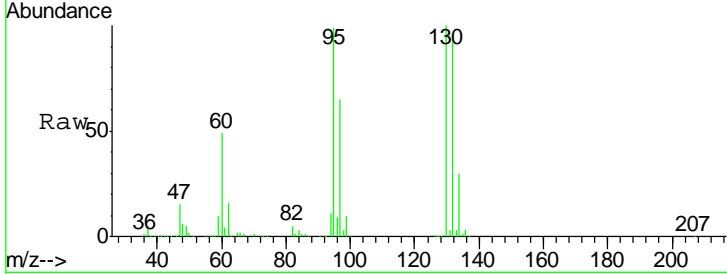




#35  
 Trichloroethene  
 Concen: 95.504 ug/L  
 RT: 9.09 min Scan# 1231  
 Delta R.T. 0.00 min  
 Lab File: VW003761.D  
 Acq: 07 Jul 2018 11:10

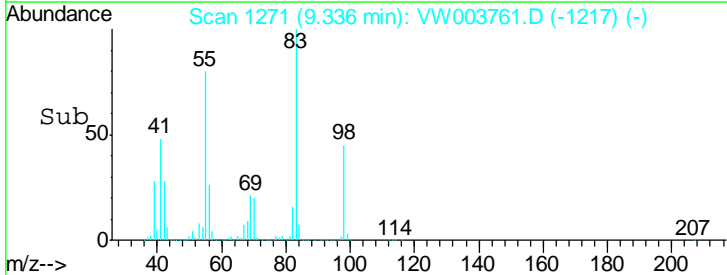
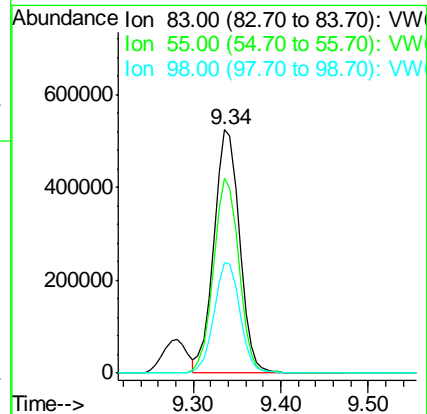
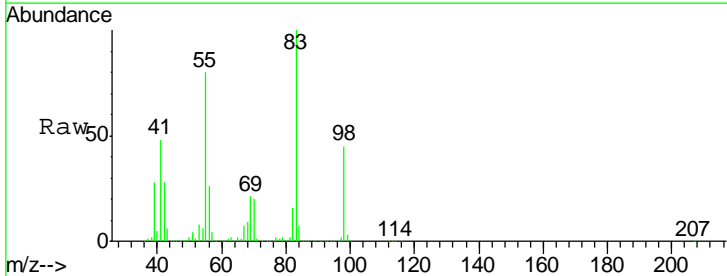
Instrument :  
 MSVOA\_W  
 ClientSampled :  
 VSTD10091

| Tgt Ion | Resp   | Lower | Upper |
|---------|--------|-------|-------|
| 95      | 596725 |       |       |
| 97      | 64.4   | 44.7  | 82.9  |
| 132     | 95.1   | 66.2  | 123.0 |
| 130     | 99.2   | 69.5  | 129.1 |

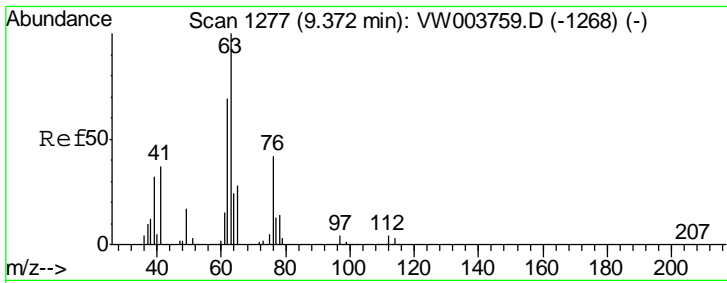


#36  
 Methylcyclohexane  
 Concen: 101.904 ug/L  
 RT: 9.34 min Scan# 1271  
 Delta R.T. 0.00 min  
 Lab File: VW003761.D  
 Acq: 07 Jul 2018 11:10

| Tgt Ion | Resp    | Lower | Upper |
|---------|---------|-------|-------|
| 83      | 1070682 |       |       |
| 55      | 79.1    | 65.0  | 97.4  |
| 98      | 45.5    | 37.0  | 55.6  |



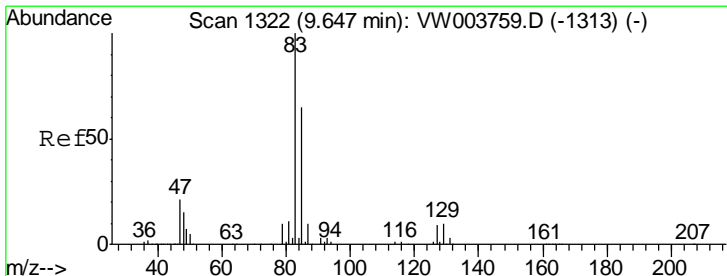
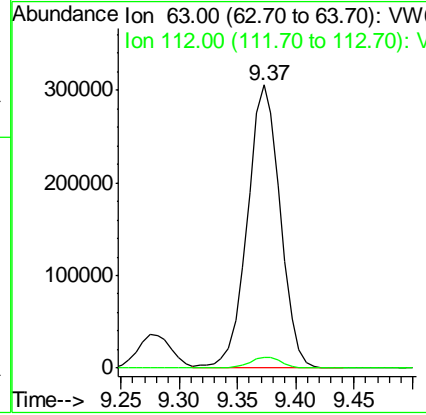
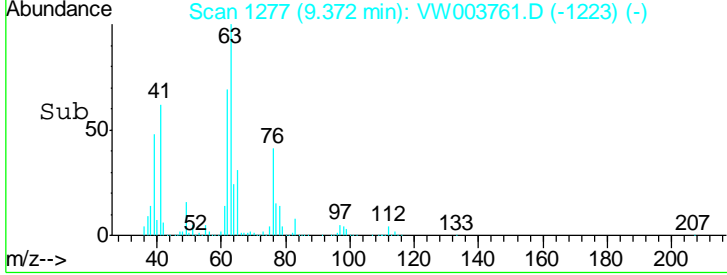
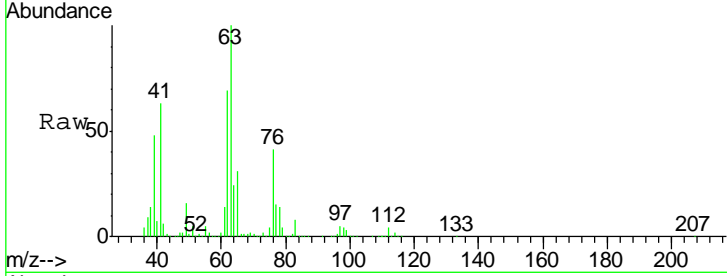




#40  
 1,2-Dichloropropane  
 Concen: 96.490 ug/L  
 RT: 9.37 min Scan# 1277  
 Delta R.T. 0.00 min  
 Lab File: VW003761.D  
 Acq: 07 Jul 2018 11:10

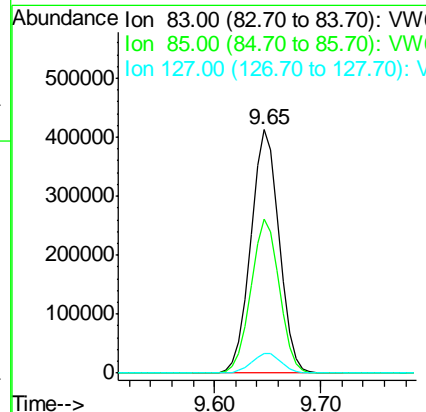
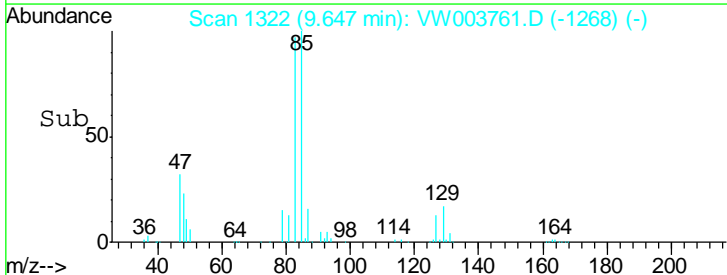
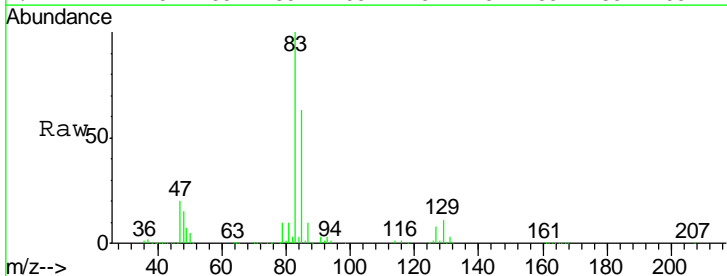
**Instrument :**  
 MSVOA\_W  
**ClientSampled :**  
 VSTD10091

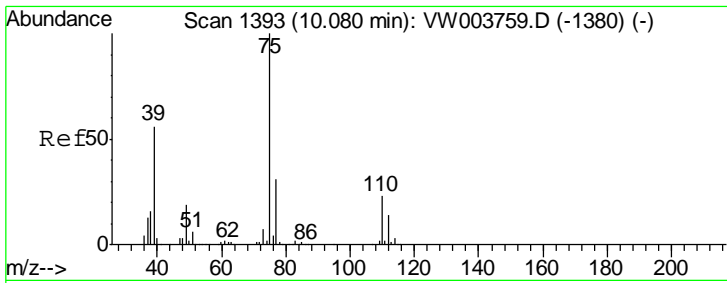
Tgt Ion: 63 Resp: 600285  
 Ion Ratio Lower Upper  
 63 100  
 112 3.8 3.3 4.9



#41  
 Bromodichloromethane  
 Concen: 95.297 ug/L  
 RT: 9.65 min Scan# 1322  
 Delta R.T. 0.00 min  
 Lab File: VW003761.D  
 Acq: 07 Jul 2018 11:10

Tgt Ion: 83 Resp: 770926  
 Ion Ratio Lower Upper  
 83 100  
 85 63.2 45.1 83.9  
 127 8.0 6.8 10.2

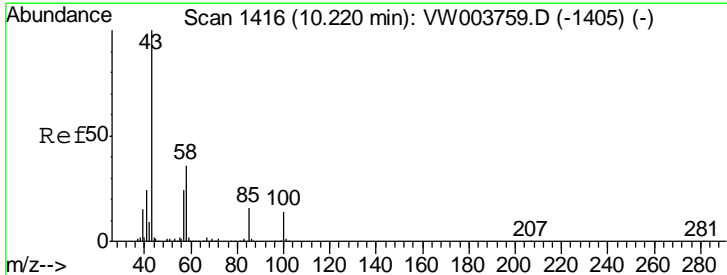
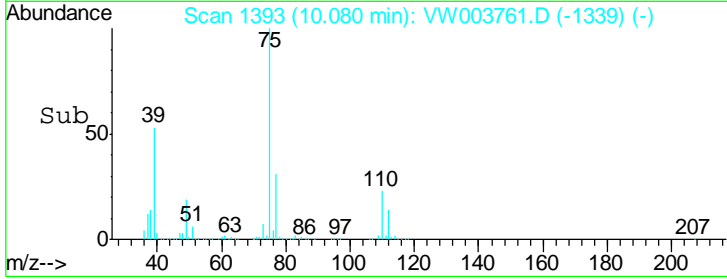
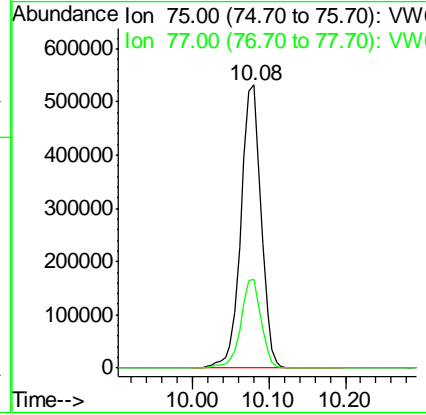
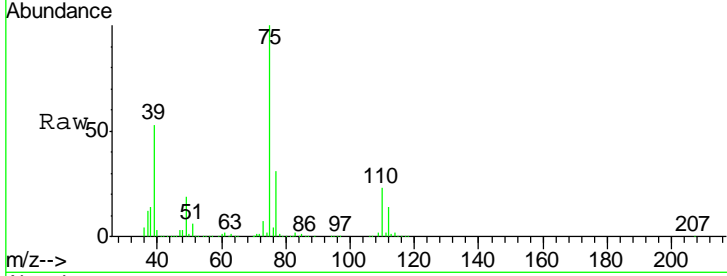




#42  
 cis-1,3-Dichloropropene  
 Concen: 105.054 ug/L  
 RT: 10.08 min Scan# 1393  
 Delta R.T. 0.00 min  
 Lab File: VW003761.D  
 Acq: 07 Jul 2018 11:10

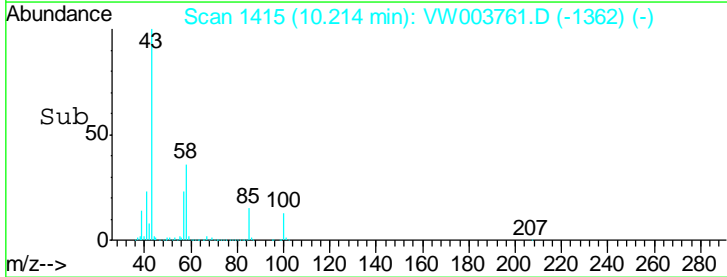
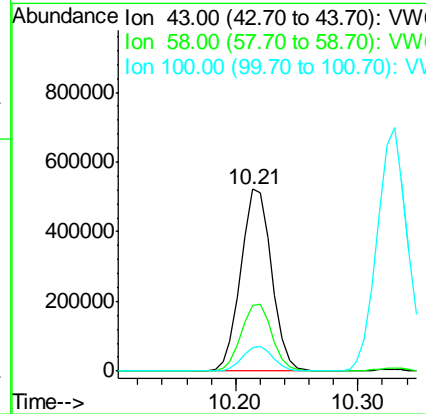
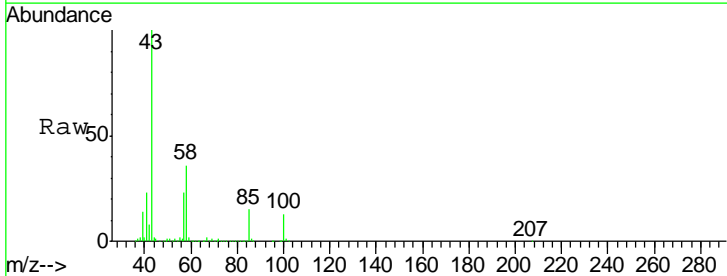
Instrument :  
 MSVOA\_W  
 ClientSampled :  
 VSTD10091

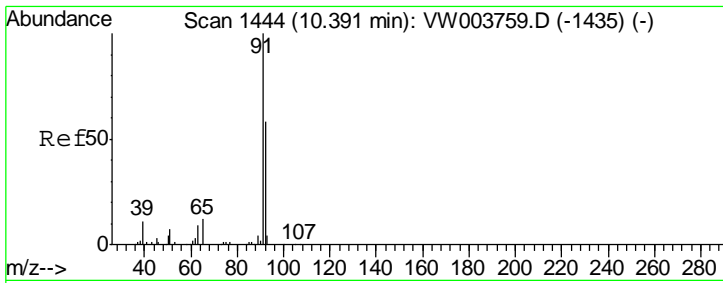
Tgt Ion: 75 Resp: 973620  
 Ion Ratio Lower Upper  
 75 100  
 77 31.5 21.6 40.0



#43  
 4-Methyl-2-pentanone  
 Concen: 204.109 ug/L  
 RT: 10.21 min Scan# 1415  
 Delta R.T. -0.01 min  
 Lab File: VW003761.D  
 Acq: 07 Jul 2018 11:10

Tgt Ion: 43 Resp: 913046  
 Ion Ratio Lower Upper  
 43 100  
 58 36.9 29.0 43.4  
 100 13.5 10.7 16.1

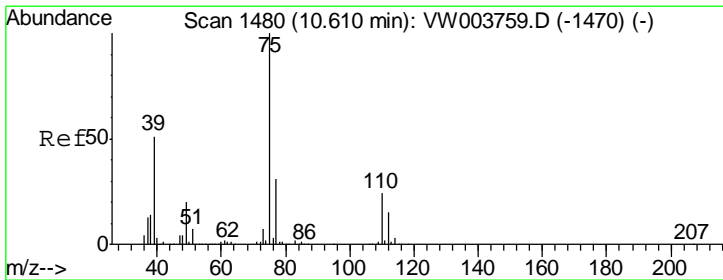
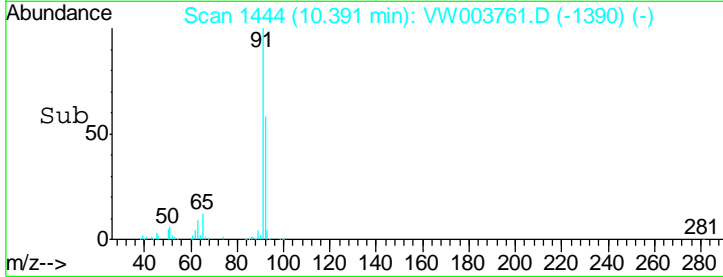
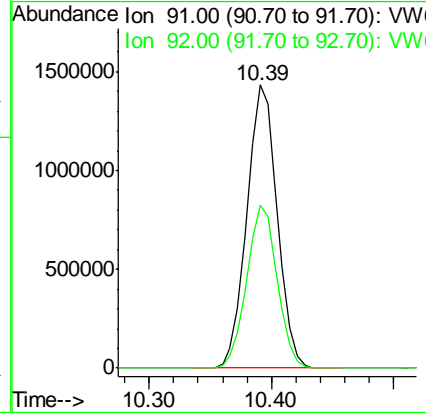
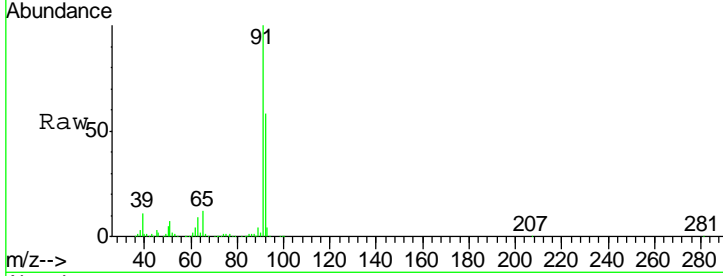




#44  
 Toluene  
 Concen: 98.185 ug/L  
 RT: 10.39 min Scan# 1444  
 Delta R.T. 0.00 min  
 Lab File: VW003761.D  
 Acq: 07 Jul 2018 11:10

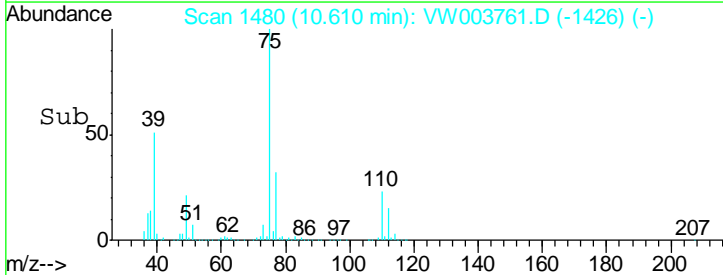
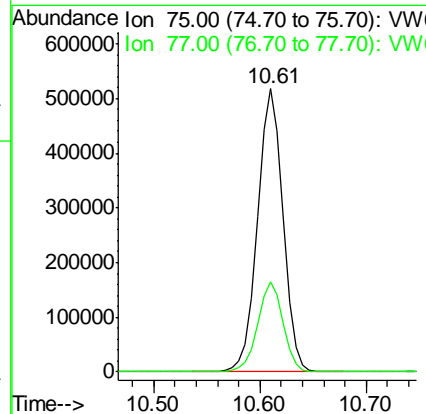
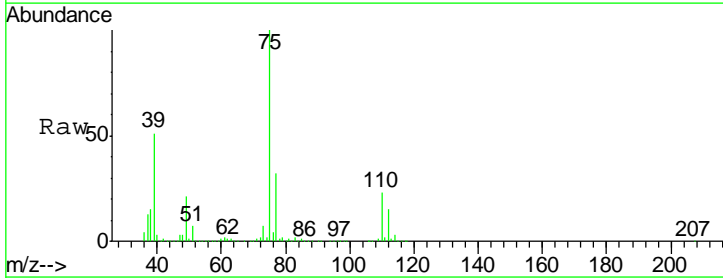
Instrument : MSVOA\_W  
 ClientSampled : VSTD10091

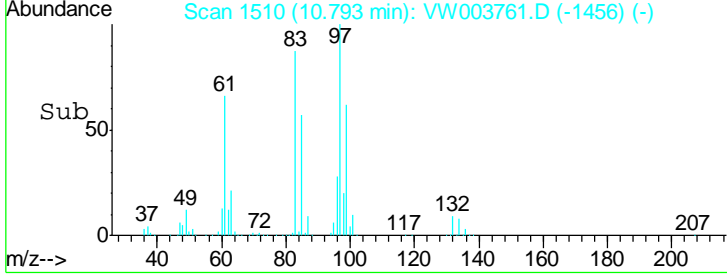
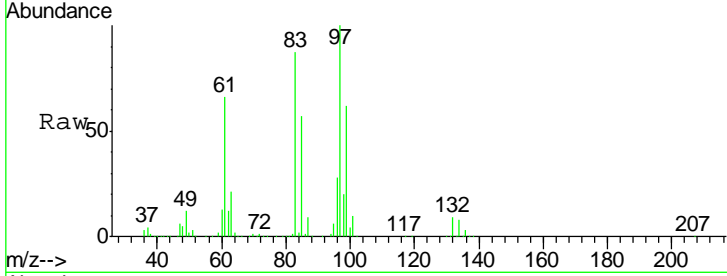
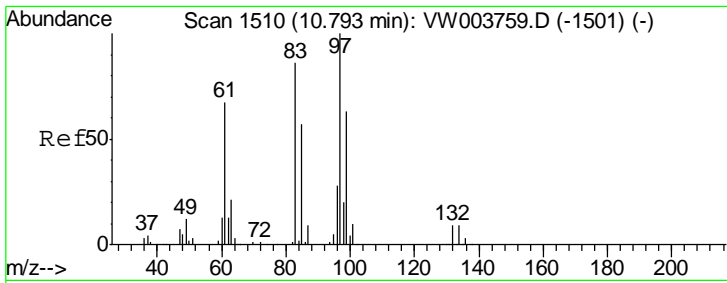
Tgt Ion: 91 Resp: 2464850  
 Ion Ratio Lower Upper  
 91 100  
 92 57.6 40.5 75.3



#45  
 trans-1,3-Dichloropropene  
 Concen: 102.490 ug/L  
 RT: 10.61 min Scan# 1480  
 Delta R.T. 0.00 min  
 Lab File: VW003761.D  
 Acq: 07 Jul 2018 11:10

Tgt Ion: 75 Resp: 868123  
 Ion Ratio Lower Upper  
 75 100  
 77 31.8 21.8 40.4

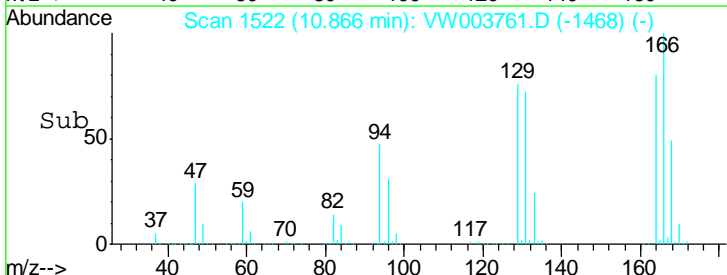
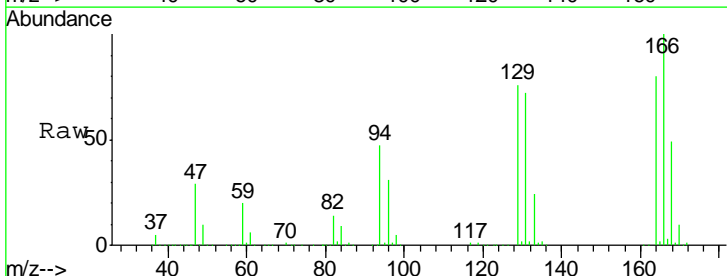
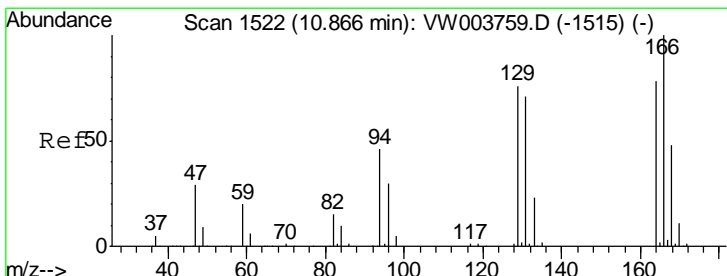
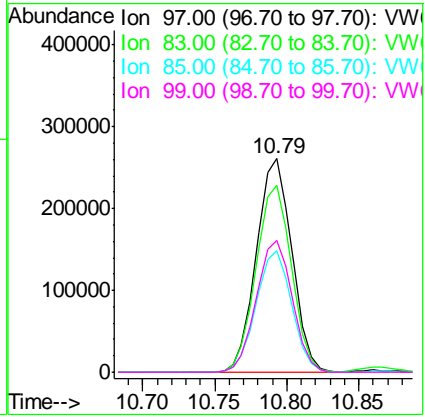




#46  
 1,1,2-Trichloroethane  
 Concen: 94.077 ug/L  
 RT: 10.79 min Scan# 1510  
 Delta R.T. 0.00 min  
 Lab File: VW003761.D  
 Acq: 07 Jul 2018 11:10

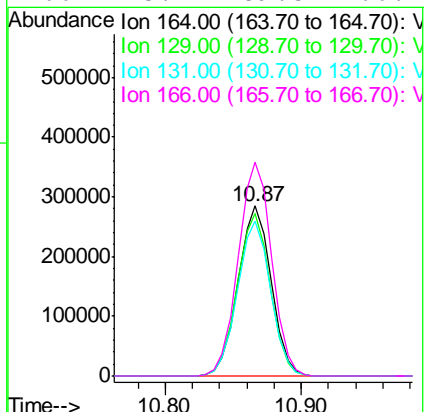
Instrument : MSVOA\_W  
 ClientSampled : VSTD10091

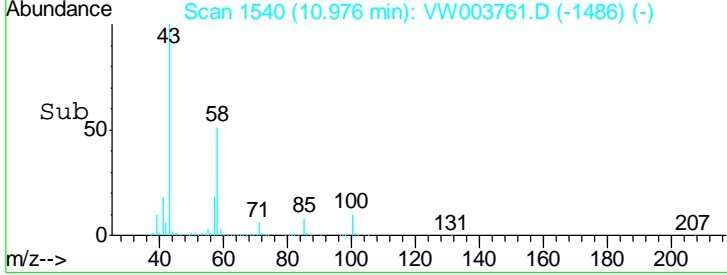
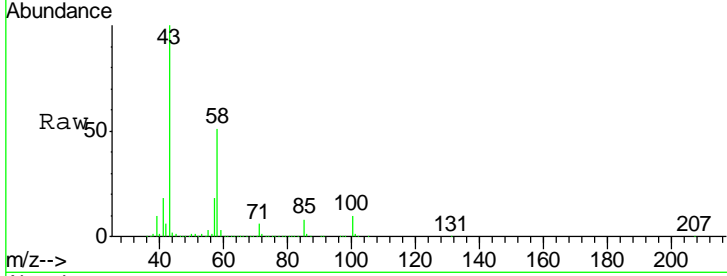
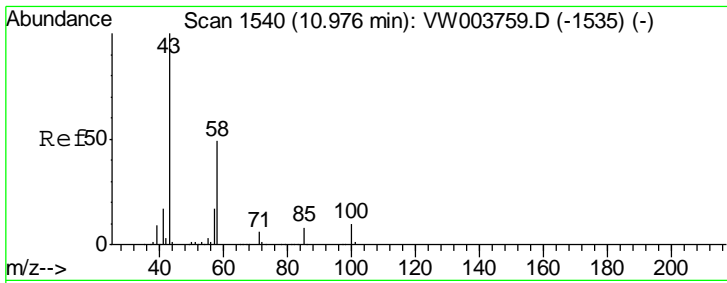
| Tgt Ion | Resp | Lower | Upper |
|---------|------|-------|-------|
| 97      | 100  |       |       |
| 83      | 87.3 | 60.1  | 111.5 |
| 85      | 57.0 | 40.0  | 74.2  |
| 99      | 61.7 | 44.0  | 81.8  |



#47  
 Tetrachloroethene  
 Concen: 93.031 ug/L  
 RT: 10.87 min Scan# 1522  
 Delta R.T. 0.00 min  
 Lab File: VW003761.D  
 Acq: 07 Jul 2018 11:10

| Tgt Ion | Resp  | Lower | Upper |
|---------|-------|-------|-------|
| 164     | 100   |       |       |
| 129     | 95.4  | 68.3  | 126.8 |
| 131     | 91.0  | 63.8  | 118.4 |
| 166     | 125.7 | 89.5  | 166.1 |



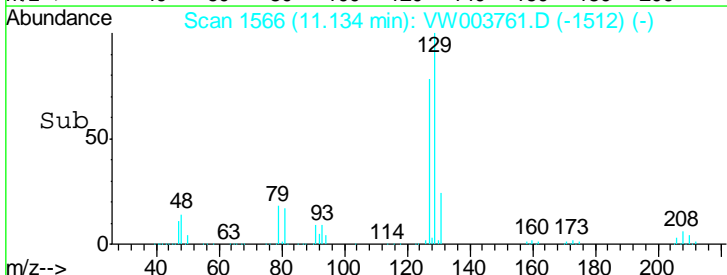
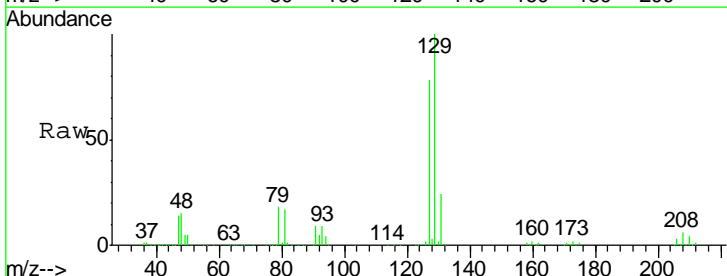
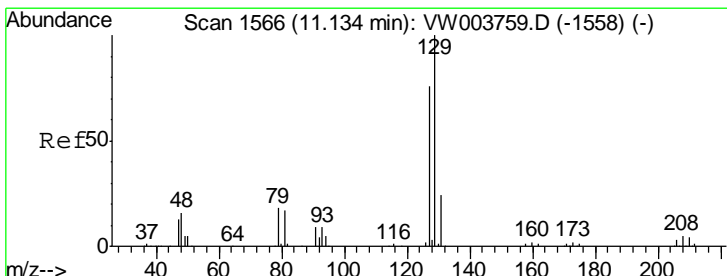
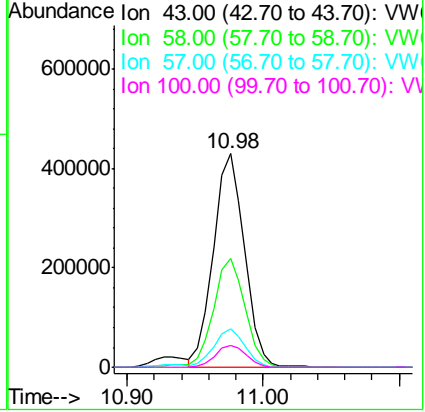


#49  
 2-Hexanone  
 Concen: 198.000 ug/L  
 RT: 10.98 min Scan# 1540  
 Delta R.T. 0.00 min  
 Lab File: VW003761.D  
 Acq: 07 Jul 2018 11:10

Instrument : MSVOA\_W  
 ClientSampled : VSTD10091

Tgt Ion: 43 Resp: 681793

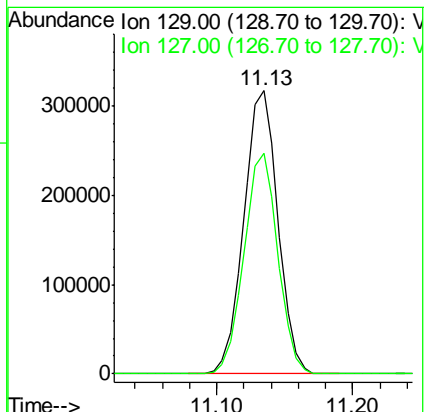
| Ion | Ratio | Lower | Upper |
|-----|-------|-------|-------|
| 43  | 100   |       |       |
| 58  | 51.2  | 39.5  | 59.3  |
| 57  | 17.9  | 13.8  | 20.8  |
| 100 | 10.3  | 8.2   | 12.2  |

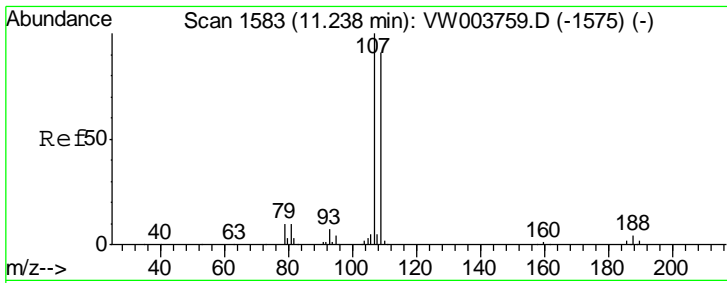


#50  
 Dibromochloromethane  
 Concen: 98.289 ug/L  
 RT: 11.13 min Scan# 1566  
 Delta R.T. 0.00 min  
 Lab File: VW003761.D  
 Acq: 07 Jul 2018 11:10

Tgt Ion: 129 Resp: 556619

| Ion | Ratio | Lower | Upper |
|-----|-------|-------|-------|
| 129 | 100   |       |       |
| 127 | 78.0  | 53.1  | 98.7  |

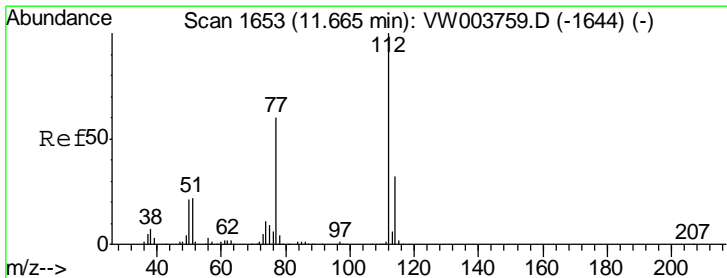
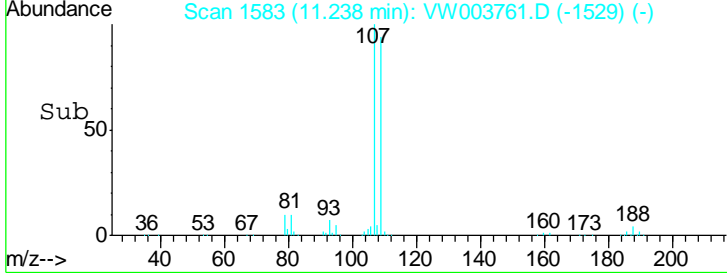
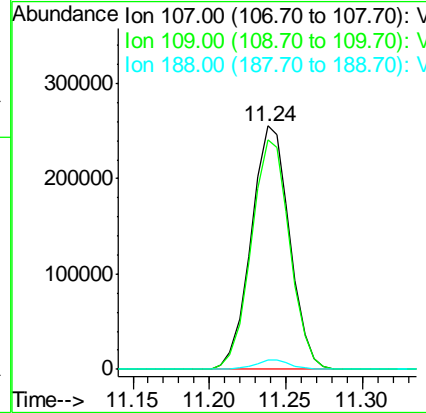
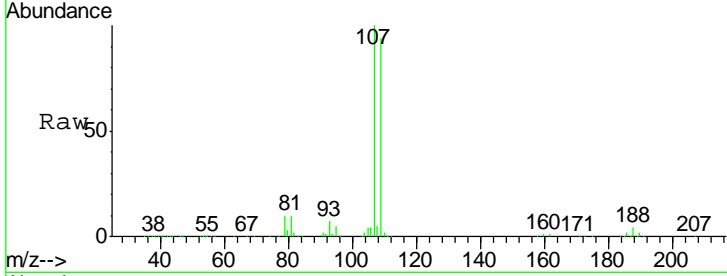




#51  
 1,2-Dibromoethane  
 Concen: 97.647 ug/L  
 RT: 11.24 min Scan# 1583  
 Delta R.T. 0.00 min  
 Lab File: VW003761.D  
 Acq: 07 Jul 2018 11:10

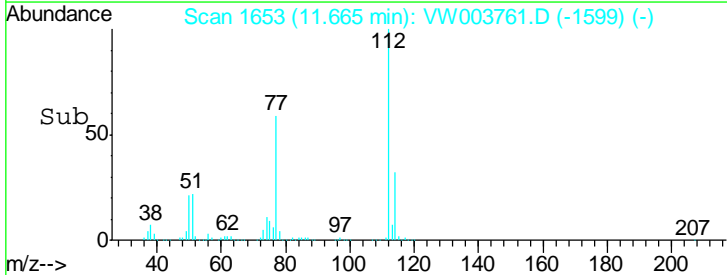
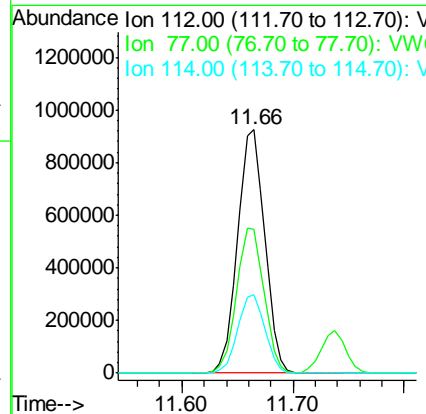
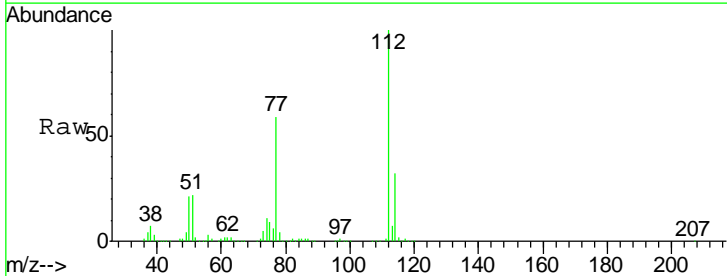
Instrument :  
 MSVOA\_W  
 ClientSampled :  
 VSTD10091

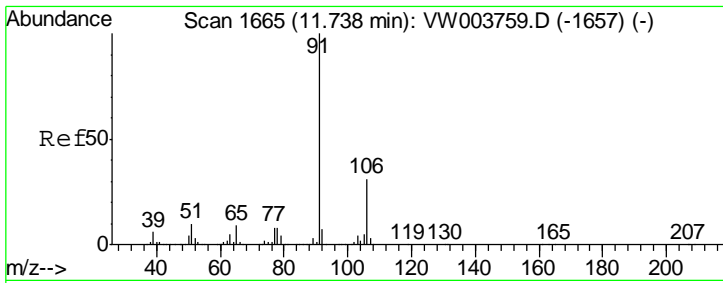
| Tgt Ion | Resp   | Lower | Upper |
|---------|--------|-------|-------|
| 107     | 445351 |       |       |
| 109     | 94.4   | 63.7  | 118.3 |
| 188     | 3.6    | 2.9   | 4.3   |



#52  
 Chlorobenzene  
 Concen: 94.366 ug/L  
 RT: 11.66 min Scan# 1653  
 Delta R.T. 0.00 min  
 Lab File: VW003761.D  
 Acq: 07 Jul 2018 11:10

| Tgt Ion | Resp    | Lower | Upper |
|---------|---------|-------|-------|
| 112     | 1558527 |       |       |
| 77      | 59.3    | 47.9  | 71.9  |
| 114     | 32.2    | 22.7  | 42.1  |

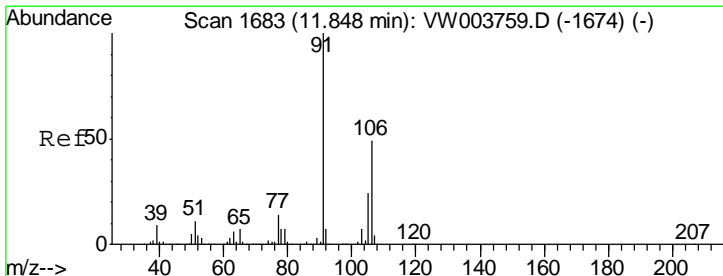
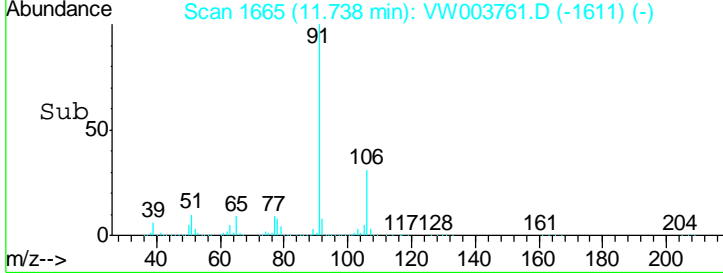
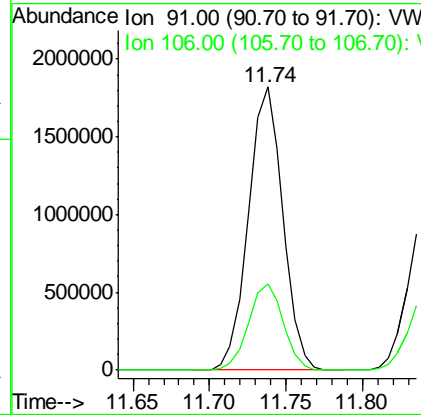
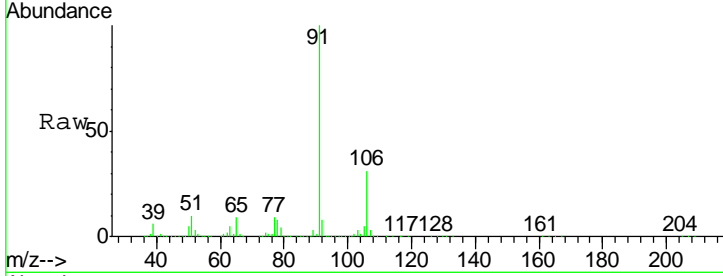




#53  
 Ethylbenzene  
 Concen: 100.334 ug/L  
 RT: 11.74 min Scan# 1665  
 Delta R.T. 0.00 min  
 Lab File: VW003761.D  
 Acq: 07 Jul 2018 11:10

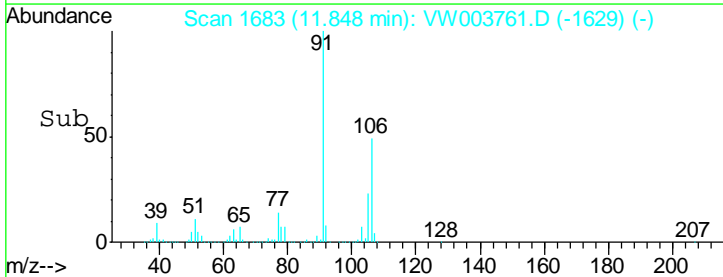
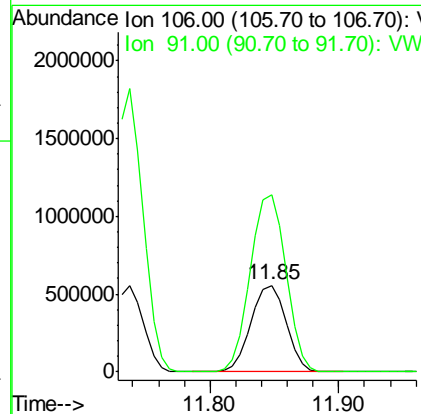
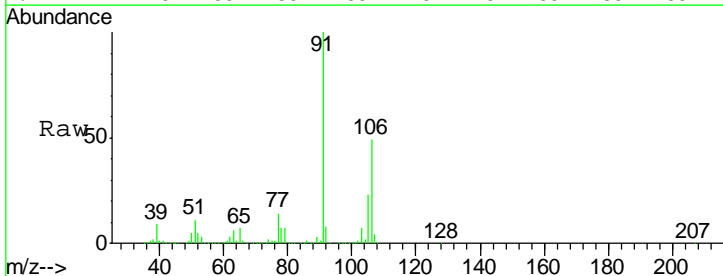
Instrument :  
 MSVOA\_W  
 ClientSampled :  
 VSTD10091

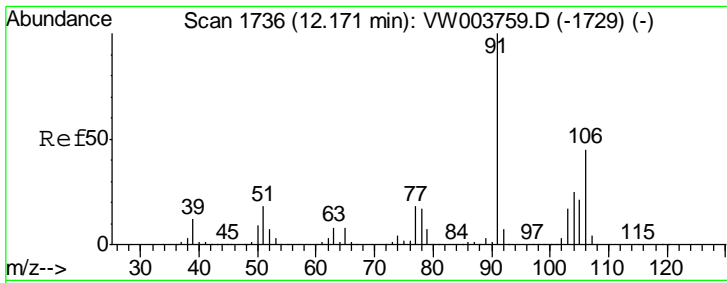
Tgt Ion: 91 Resp: 2847142  
 Ion Ratio Lower Upper  
 91 100  
 106 30.5 21.3 39.6



#54  
 m,p-Xylene  
 Concen: 100.706 ug/L  
 RT: 11.85 min Scan# 1683  
 Delta R.T. 0.00 min  
 Lab File: VW003761.D  
 Acq: 07 Jul 2018 11:10

Tgt Ion: 106 Resp: 1052289  
 Ion Ratio Lower Upper  
 106 100  
 91 205.5 142.9 265.3

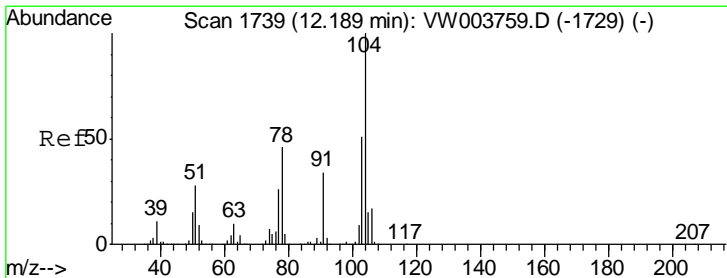
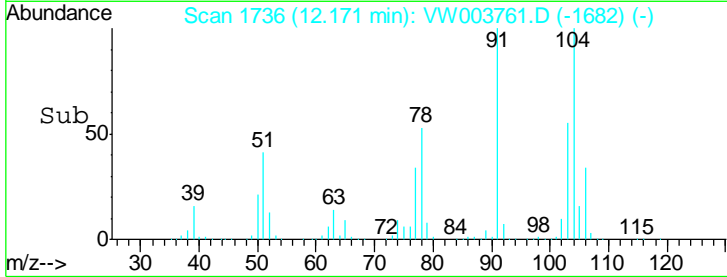
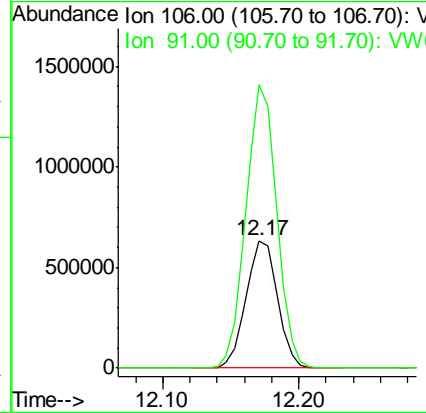
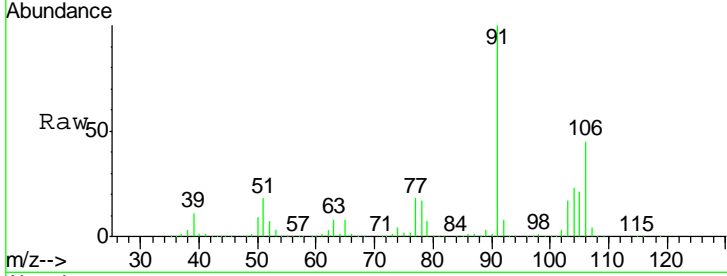




#55  
 o-xylene  
 Concen: 104.084 ug/L  
 RT: 12.17 min Scan# 1736  
 Delta R.T. 0.00 min  
 Lab File: VW003761.D  
 Acq: 07 Jul 2018 11:10

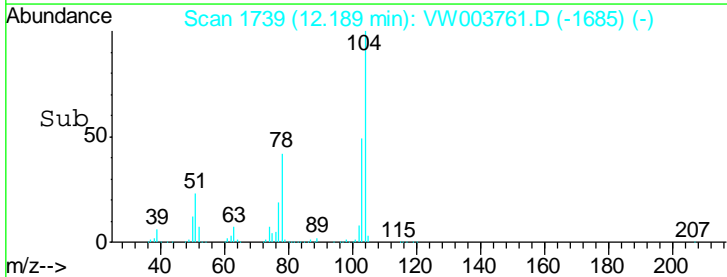
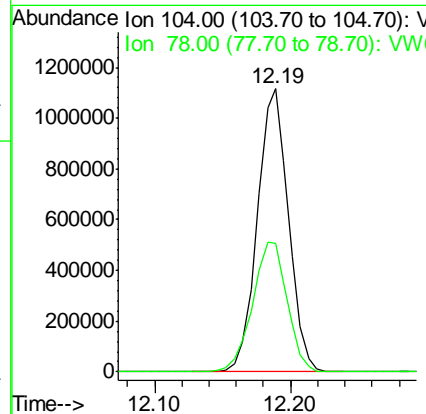
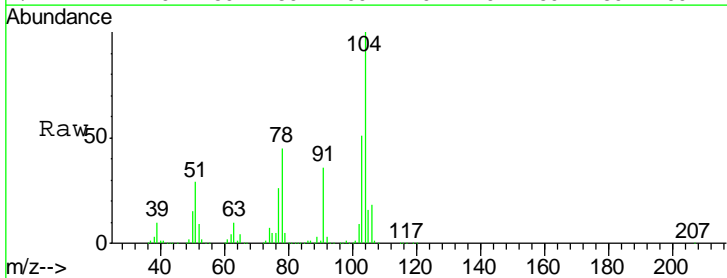
Instrument : MSVOA\_W  
 ClientSampled : VSTD10091

Tgt Ion:106 Resp: 1026969  
 Ion Ratio Lower Upper  
 106 100  
 91 222.2 154.1 286.3

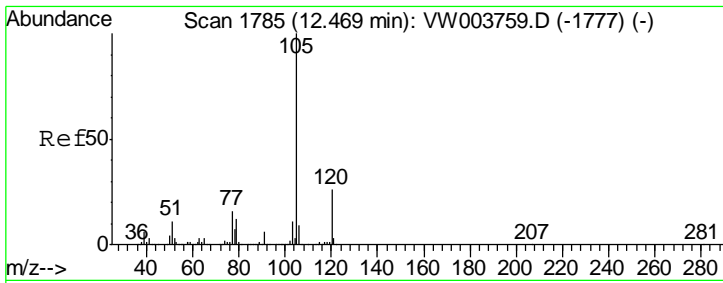


#56  
 Styrene  
 Concen: 103.611 ug/L  
 RT: 12.19 min Scan# 1739  
 Delta R.T. 0.00 min  
 Lab File: VW003761.D  
 Acq: 07 Jul 2018 11:10

Tgt Ion:104 Resp: 1787866  
 Ion Ratio Lower Upper  
 104 100  
 78 45.2 32.1 59.7





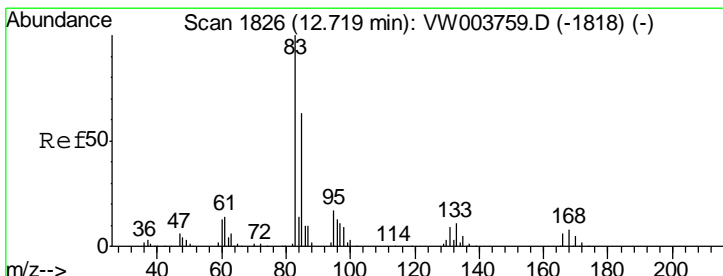
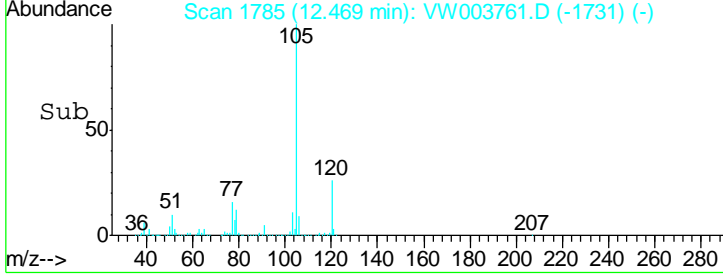
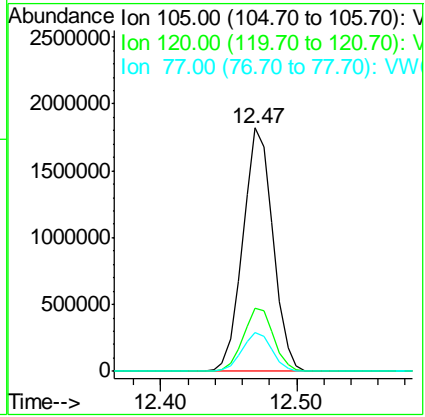
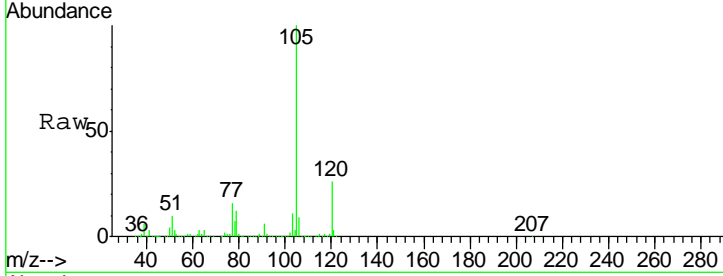


#57  
 Isopropylbenzene  
 Concen: 103.585 ug/L  
 RT: 12.47 min Scan# 1785  
 Delta R.T. 0.00 min  
 Lab File: VW003761.D  
 Acq: 07 Jul 2018 11:10

Instrument : MSVOA\_W  
 ClientSampled : VSTD10091

Tgt Ion: 105 Resp: 2803515

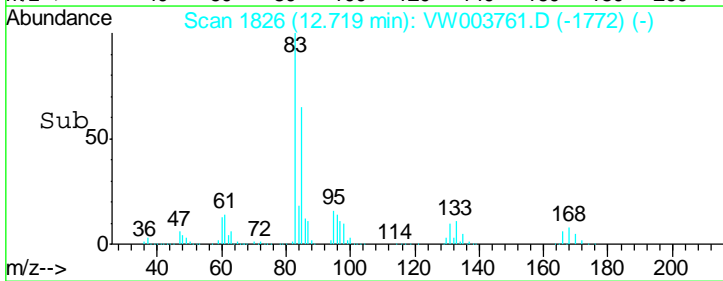
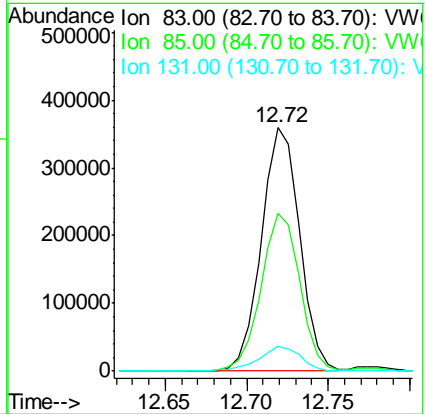
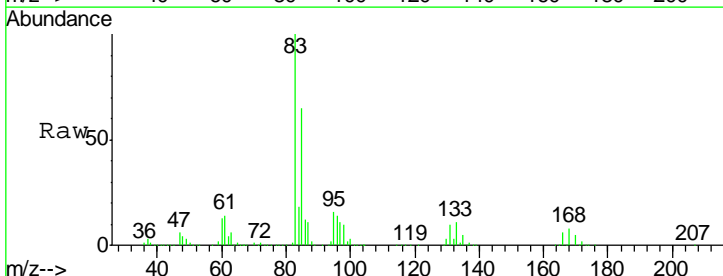
| Ion | Ratio | Lower | Upper |
|-----|-------|-------|-------|
| 105 | 100   |       |       |
| 120 | 26.2  | 20.9  | 31.3  |
| 77  | 16.0  | 13.0  | 19.6  |

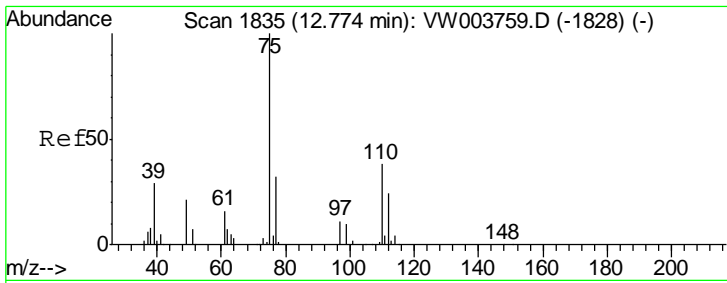


#58  
 1,1,2,2-Tetrachloroethane  
 Concen: 93.233 ug/L  
 RT: 12.72 min Scan# 1826  
 Delta R.T. 0.00 min  
 Lab File: VW003761.D  
 Acq: 07 Jul 2018 11:10

Tgt Ion: 83 Resp: 585987

| Ion | Ratio | Lower | Upper |
|-----|-------|-------|-------|
| 83  | 100   |       |       |
| 85  | 65.0  | 44.2  | 82.0  |
| 131 | 10.0  | 7.5   | 11.3  |

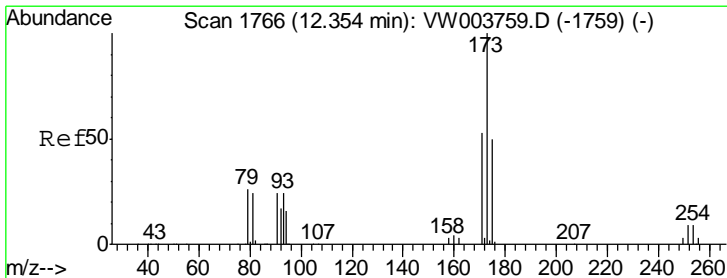
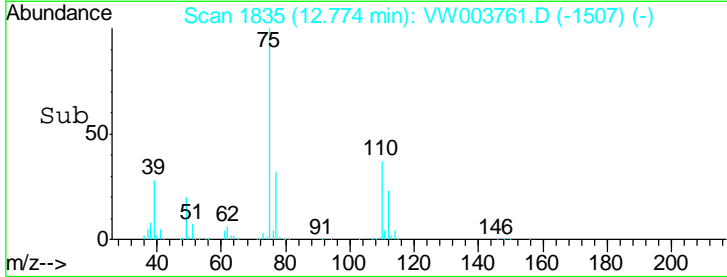
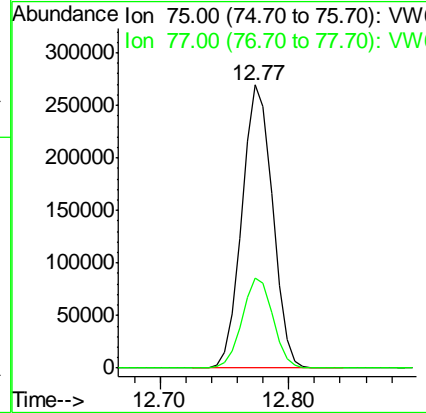
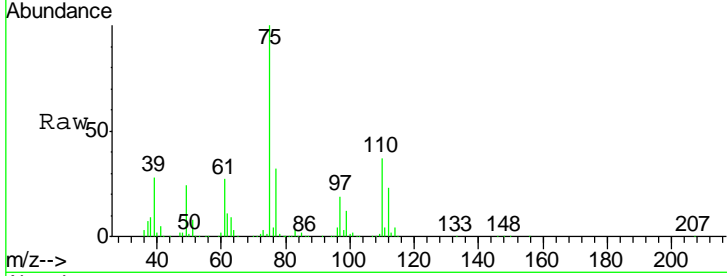




#59  
 1,2,3-Trichloropropane  
 Concen: 94.340 ug/L  
 RT: 12.77 min Scan# 1835  
 Delta R.T. 0.00 min  
 Lab File: VW003761.D  
 Acq: 07 Jul 2018 11:10

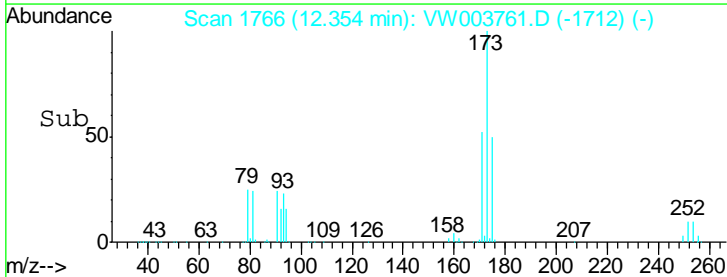
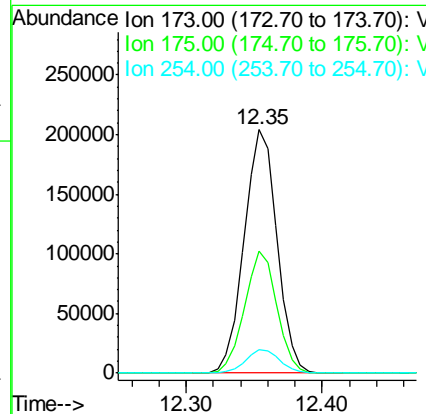
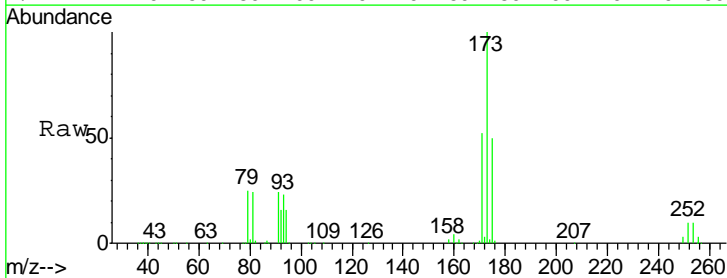
Instrument :  
 MSVOA\_W  
 ClientSampled :  
 VSTD10091

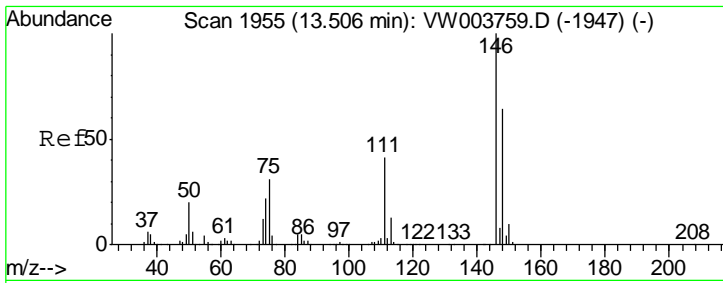
Tgt Ion: 75 Resp: 442276  
 Ion Ratio Lower Upper  
 75 100  
 77 31.9 26.0 39.0



#62  
 Bromoform  
 Concen: 96.203 ug/L  
 RT: 12.35 min Scan# 1766  
 Delta R.T. 0.00 min  
 Lab File: VW003761.D  
 Acq: 07 Jul 2018 11:10

Tgt Ion: 173 Resp: 344066  
 Ion Ratio Lower Upper  
 173 100  
 175 49.3 38.7 58.1  
 254 9.8 7.7 11.5

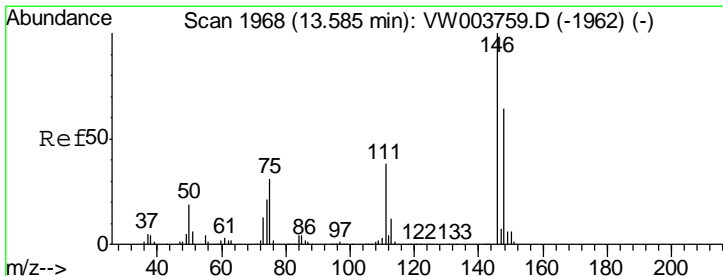
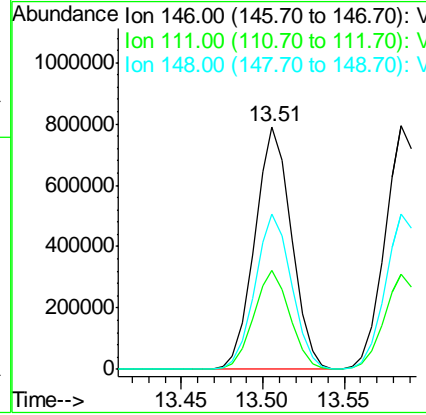
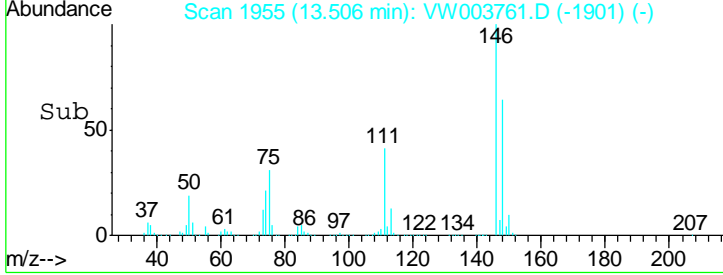
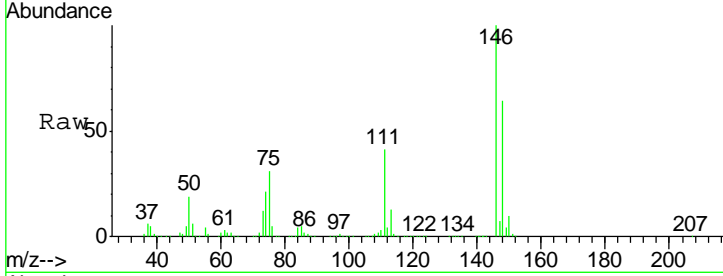




#63  
 1,3-Dichlorobenzene  
 Concen: 97.567 ug/L  
 RT: 13.51 min Scan# 1955  
 Delta R.T. 0.00 min  
 Lab File: VW003761.D  
 Acq: 07 Jul 2018 11:10

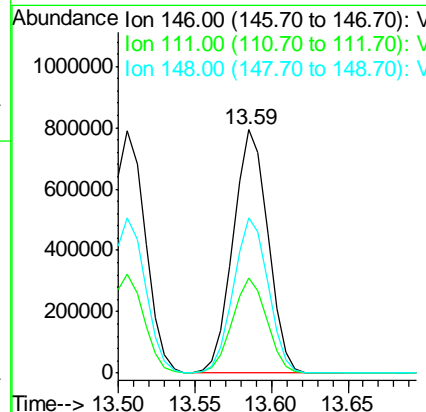
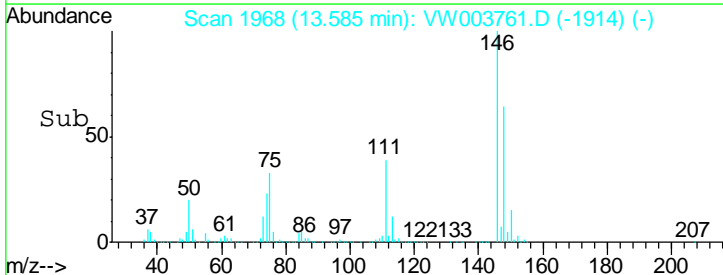
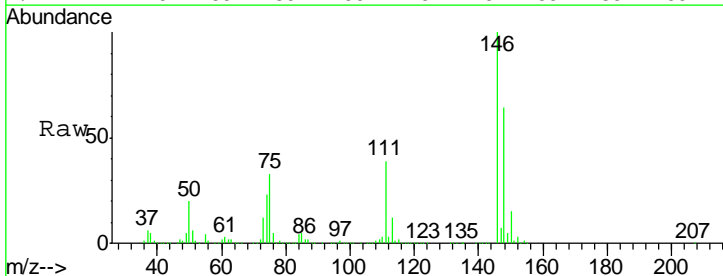
Instrument :  
 MSVOA\_W  
 ClientSampled :  
 VSTD10091

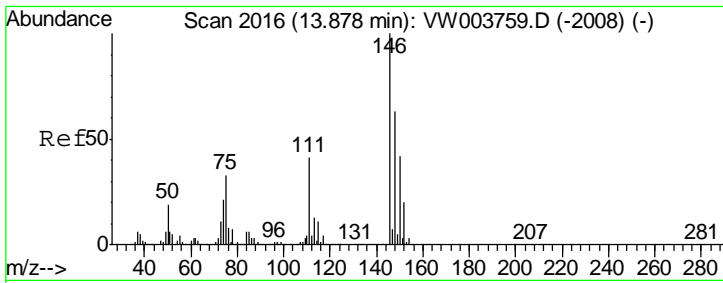
| Tgt Ion | Resp | Lower | Upper |
|---------|------|-------|-------|
| 146     | 100  |       |       |
| 111     | 40.9 | 28.3  | 52.7  |
| 148     | 63.8 | 45.1  | 83.7  |



#64  
 1,4-Dichlorobenzene  
 Concen: 91.550 ug/L  
 RT: 13.59 min Scan# 1968  
 Delta R.T. 0.00 min  
 Lab File: VW003761.D  
 Acq: 07 Jul 2018 11:10

| Tgt Ion | Resp | Lower | Upper |
|---------|------|-------|-------|
| 146     | 100  |       |       |
| 111     | 39.3 | 26.9  | 50.1  |
| 148     | 63.9 | 44.6  | 82.8  |

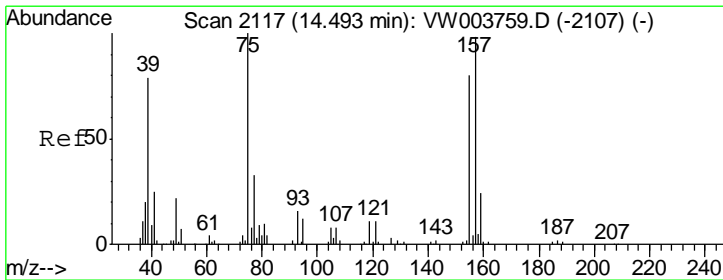
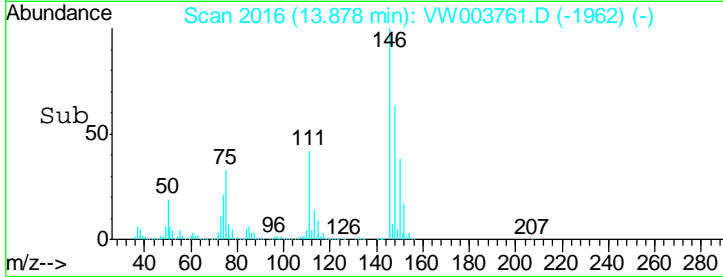
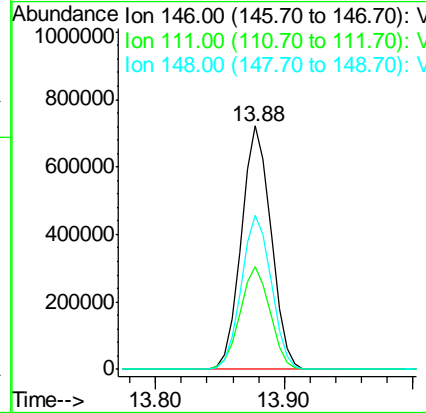
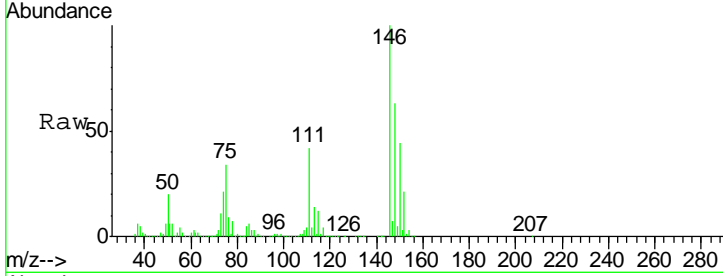




#65  
 1,2-Dichlorobenzene  
 Concen: 93.103 ug/L  
 RT: 13.88 min Scan# 2016  
 Delta R.T. 0.00 min  
 Lab File: VW003761.D  
 Acq: 07 Jul 2018 11:10

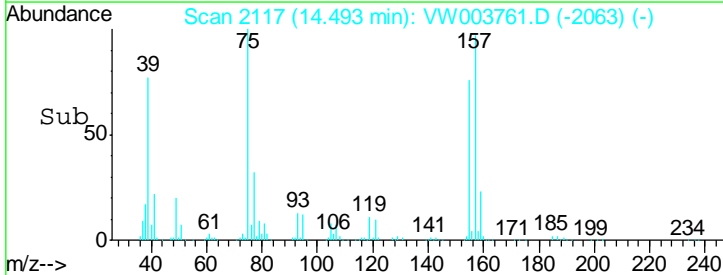
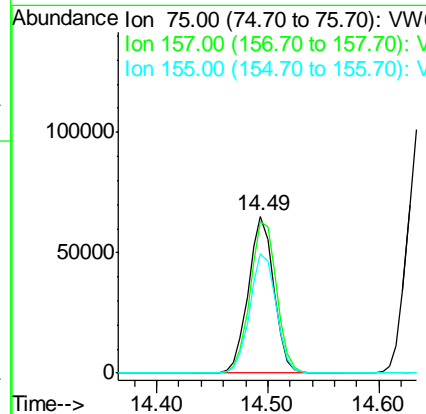
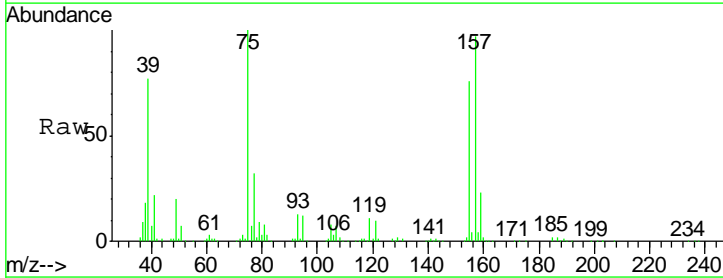
Instrument :  
 MSVOA\_W  
 ClientSampled :  
 VSTD10091

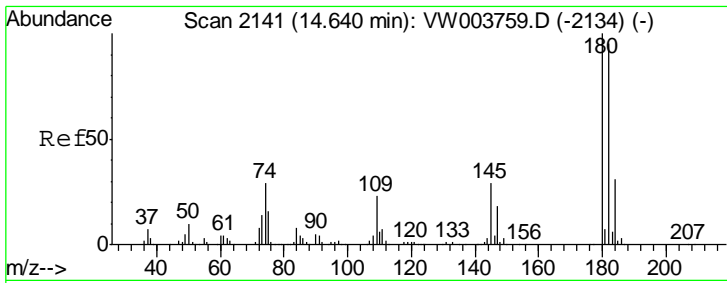
| Tgt Ion | Resp    | Lower | Upper |
|---------|---------|-------|-------|
| 146     | 1148964 |       |       |
| 111     | 42.0    | 32.6  | 48.8  |
| 148     | 63.5    | 50.3  | 75.5  |



#66  
 1,2-Dibromo-3-chloropropane  
 Concen: 92.520 ug/L  
 RT: 14.49 min Scan# 2117  
 Delta R.T. 0.00 min  
 Lab File: VW003761.D  
 Acq: 07 Jul 2018 11:10

| Tgt Ion | Resp   | Lower | Upper |
|---------|--------|-------|-------|
| 75      | 103244 |       |       |
| 157     | 97.0   | 78.6  | 118.0 |
| 155     | 76.4   | 63.7  | 95.5  |

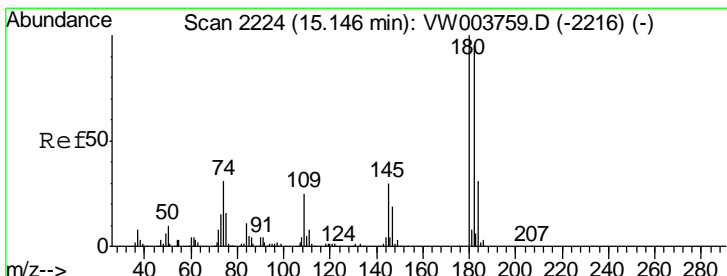
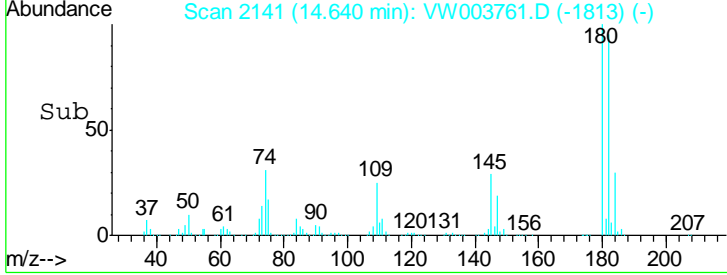
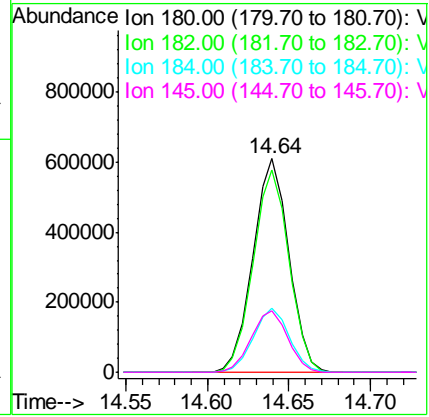
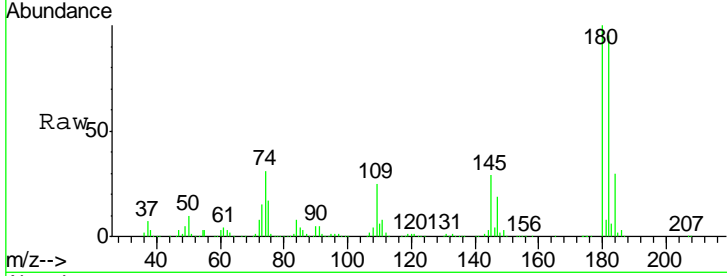




#67  
 1,3,5-Trichlorobenzene  
 Concen: 93.907 ug/L  
 RT: 14.64 min Scan# 2141  
 Delta R.T. 0.00 min  
 Lab File: VW003761.D  
 Acq: 07 Jul 2018 11:10

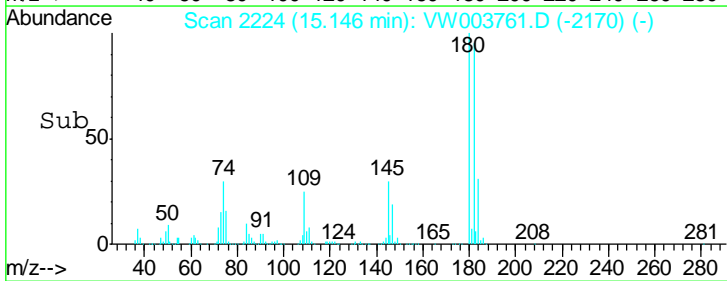
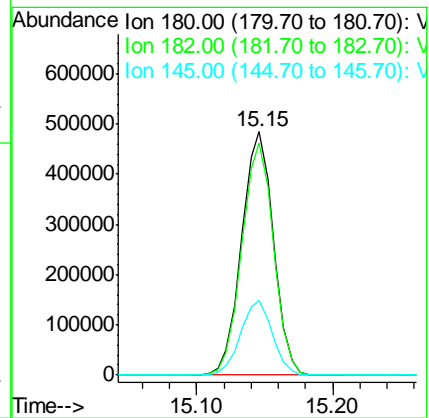
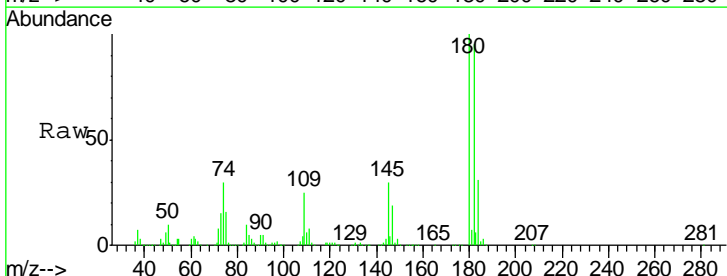
Instrument : MSVOA\_W  
 ClientSampled : VSTD10091

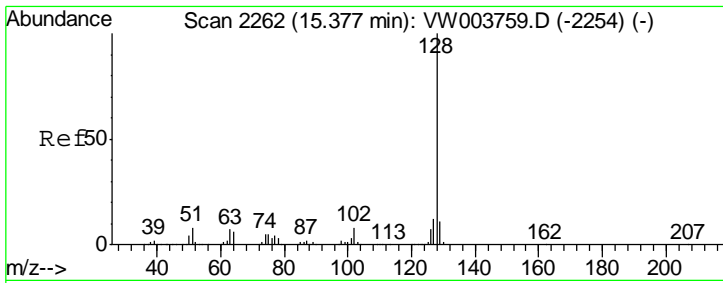
| Tgt Ion | Resp | Lower | Upper |
|---------|------|-------|-------|
| 180     | 100  |       |       |
| 182     | 94.7 | 75.7  | 113.5 |
| 184     | 30.2 | 24.4  | 36.6  |
| 145     | 29.4 | 23.5  | 35.3  |



#68  
 1,2,4-trichlorobenzene  
 Concen: 98.800 ug/L  
 RT: 15.15 min Scan# 2224  
 Delta R.T. 0.00 min  
 Lab File: VW003761.D  
 Acq: 07 Jul 2018 11:10

| Tgt Ion | Resp | Lower | Upper |
|---------|------|-------|-------|
| 180     | 100  |       |       |
| 182     | 95.2 | 76.4  | 114.6 |
| 145     | 30.4 | 24.2  | 36.2  |



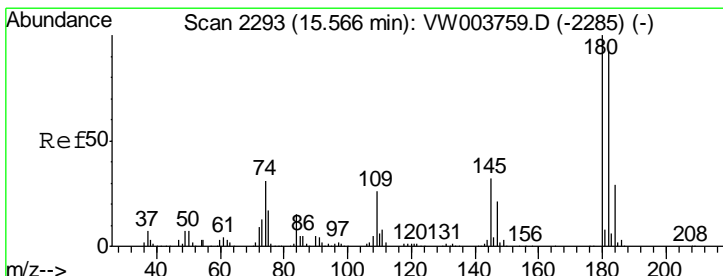
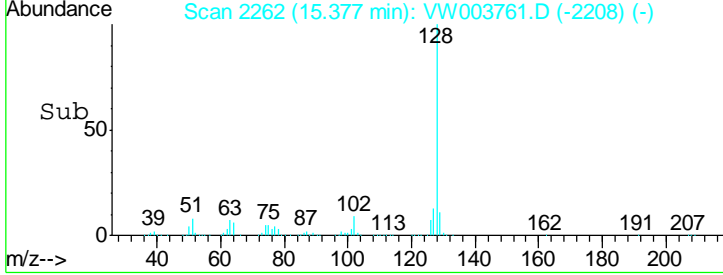
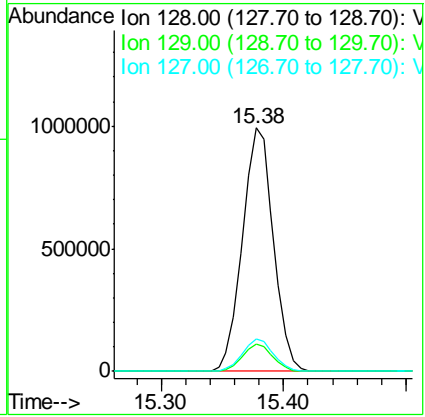
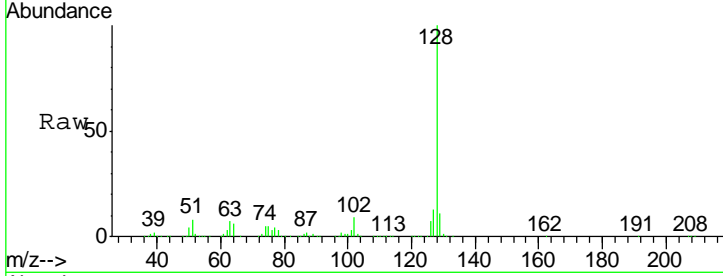


#69  
 Naphthalene  
 Concen: 108.651 ug/L  
 RT: 15.38 min Scan# 2262  
 Delta R.T. 0.00 min  
 Lab File: VW003761.D  
 Acq: 07 Jul 2018 11:10

Instrument : MSVOA\_W  
 ClientSampled : VSTD10091

Tgt Ion:128 Resp: 1738191

| Ion | Ratio | Lower | Upper |
|-----|-------|-------|-------|
| 128 | 100   |       |       |
| 129 | 11.0  | 8.7   | 13.1  |
| 127 | 13.3  | 10.6  | 16.0  |



#70  
 1,2,3-Trichlorobenzene  
 Concen: 95.296 ug/L  
 RT: 15.57 min Scan# 2293  
 Delta R.T. 0.00 min  
 Lab File: VW003761.D  
 Acq: 07 Jul 2018 11:10

Tgt Ion:180 Resp: 719486

| Ion | Ratio | Lower | Upper |
|-----|-------|-------|-------|
| 180 | 100   |       |       |
| 182 | 95.3  | 75.8  | 113.6 |
| 145 | 32.0  | 25.3  | 37.9  |

