

Data Path : Z:\VOASRV\HPCHEM1\MSVOA W\DATA\VW070918\  
 Data File : VW003794.D  
 Acq On : 10 Jul 2018 00:13  
 Operator : SY/AP  
 Sample : VW0709SBL02  
 Misc : 5.00G/5ML/MSVOA W/SOIL  
 ALS Vial : 32 Sample Multiplier: 1

Instrument :  
 MSVOA\_W  
 ClientSampleId :  
 VW0709SBL02

Integration Parameters: RTEINT.P

Integrator: RTE  
 Smoothing : ON Filtering: 5  
 Sampling : 1 Min Area: 3 % of largest Peak  
 Start Thrs: 0.2 Max Peaks: 100  
 Stop Thrs : 0 Peak Location: TOP

If leading or trailing edge < 100 prefer < Baseline drop else tangent >  
 Peak separation: 5

Method : Z:\VOASRV\HPCHEM1\MSVOA\_W\METHOD\82W070718S.M  
 Title : SW846 8260

Signal : TIC

peak #	R.T. min	first scan	max scan	last scan	PK TY	peak height	corr. area	corr. % max.	% of total
1	1.801	28	35	57	rVB	785993	1840555	100.00%	23.958%
2	4.904	533	544	559	rBV3	8763	33098	1.80%	0.431%
3	7.153	902	913	927	rBV	9956	29060	1.58%	0.378%
4	7.885	1022	1033	1038	rBV	164523	383835	20.85%	4.996%
5	7.952	1038	1044	1056	rVB	244122	533885	29.01%	6.949%
6	8.306	1086	1102	1113	rBV	162361	370275	20.12%	4.820%
7	8.842	1180	1190	1203	rBV	383872	754257	40.98%	9.818%
8	10.330	1426	1434	1441	rBV	638499	1110591	60.34%	14.456%
9	10.708	1490	1496	1502	rBV2	13316	24463	1.33%	0.318%
10	11.634	1640	1648	1657	rBV	551660	923016	50.15%	12.015%
11	12.622	1803	1810	1819	rBV	461976	755581	41.05%	9.835%
12	13.567	1958	1965	1976	rVB	564153	901257	48.97%	11.732%
13	14.085	2043	2050	2056	rVB	13495	22484	1.22%	0.293%

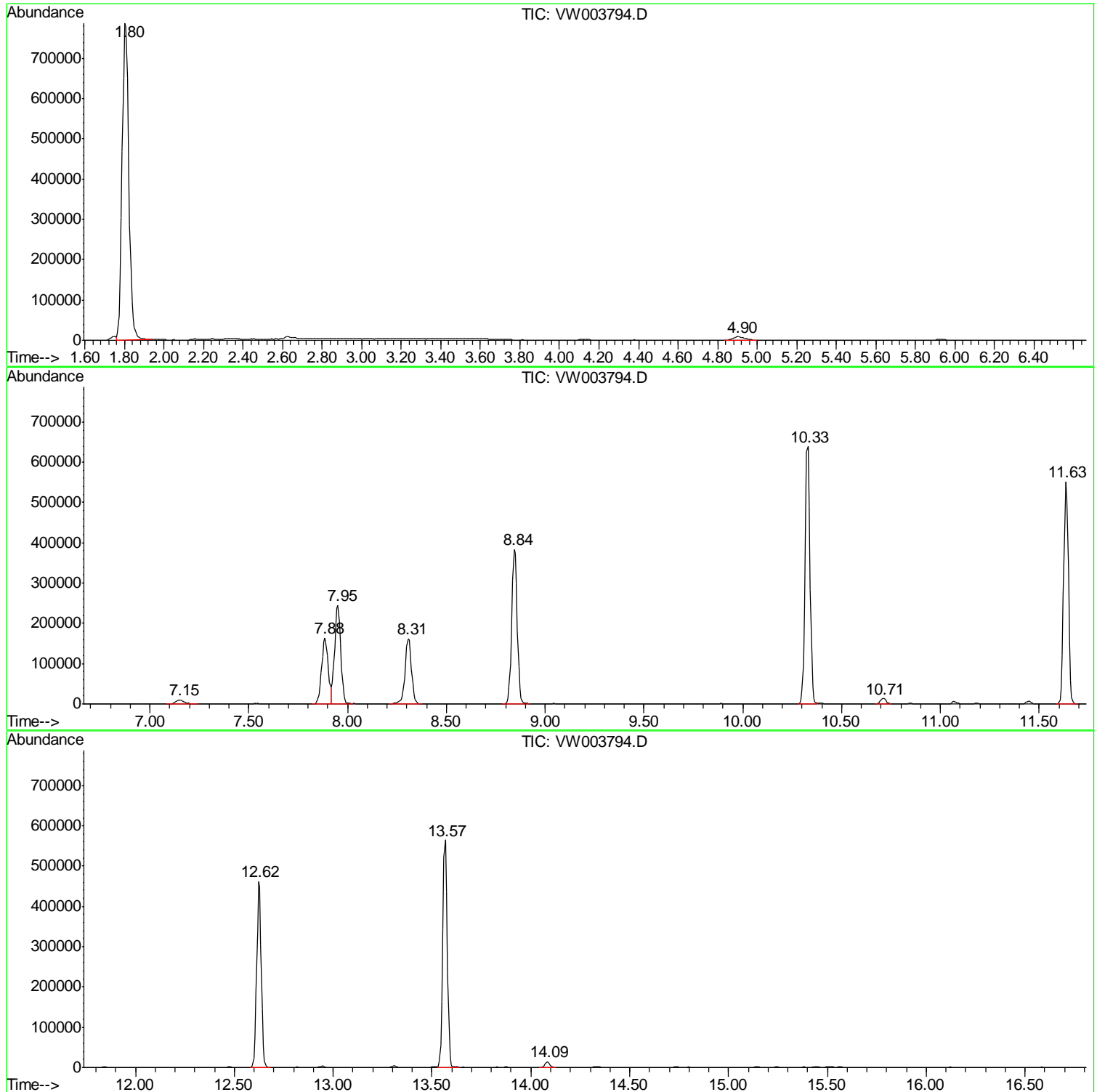
Sum of corrected areas: 7682357

Data Path : Z:\VOASRV\HPCHEM1\MSVOA W\DATA\VW070918\  
Data File : VW003794.D  
Acq On : 10 Jul 2018 00:13  
Operator : SY/AP  
Sample : VW0709SBL02  
Misc : 5.00G/5ML/MSVOA W/SOIL  
ALS Vial : 32 Sample Multiplier: 1

Instrument :  
MSVOA\_W  
ClientSampleId :  
VW0709SBL02

Quant Method : Z:\VOASRV\HPCHEM1\MSVOA\_W\METHOD\82W070718S.M  
Quant Title : SW846 8260

TIC Library : C:\DATABASE\NIST11.L  
TIC Integration Parameters: LSCINT.P



Data Path : Z:\VOASRV\HPCHEM1\MSVOA\_W\DATA\VW070918\  
Data File : VW003794.D  
Acq On : 10 Jul 2018 00:13  
Operator : SY/AP  
Sample : VW0709SBL02  
Misc : 5.00G/5ML/MSVOA\_W/SOIL  
ALS Vial : 32 Sample Multiplier: 1

Instrument :  
MSVOA\_W  
ClientSampleId :  
VW0709SBL02

Quant Method : Z:\VOASRV\HPCHEM1\MSVOA\_W\METHOD\82W070718S.M  
Quant Title : SW846 8260

TIC Library : C:\DATABASE\NIST11.L  
TIC Integration Parameters: LSCINT.P

No Library Search Compounds Detected

\*\*\*\*\*

Data Path : Z:\VOASRV\HPCHEM1\MSVOA\_W\DATA\VW070918\  
Data File : VW003794.D  
Acq On : 10 Jul 2018 00:13  
Operator : SY/AP  
Sample : VW0709SBL02  
Misc : 5.00G/5ML/MSVOA\_W/SOIL  
ALS Vial : 32 Sample Multiplier: 1

Instrument :  
MSVOA\_W  
ClientSampleId :  
VW0709SBL02

Quant Method : Z:\VOASRV\HPCHEM1\MSVOA\_W\METHOD\82W070718S.M  
Quant Title : SW846 8260

TIC Library : C:\DATABASE\NIST11.L  
TIC Integration Parameters: LSCINT.P

TIC Top Hit name	RT	EstConc	Units	Response	--Internal Standard--			
					#	RT	Resp	Conc

---