

Data Path : Z:\VOASRV\HPCHEM1\MSVOA W\DATA\VW070919\  
 Data File : VW011176.D  
 Acq On : 09 Jul 2019 13:53  
 Operator : SY/VA  
 Sample : K3687-01  
 Misc : 6.35G/5ML/MSVOA W/SOIL  
 ALS Vial : 8 Sample Multiplier: 1

Instrument :  
 MSVOA\_W  
 ClientSampleId :  
 72-12017-VNJ-206

Integration Parameters: RTEINT.P  
 Integrator: RTE  
 Smoothing : ON Filtering: 5  
 Sampling : 1 Min Area: 3 % of largest Peak  
 Start Thrs: 0.2 Max Peaks: 100  
 Stop Thrs : 0 Peak Location: TOP

If leading or trailing edge < 100 prefer < Baseline drop else tangent >  
 Peak separation: 5

Method : Z:\VOASRV\HPCHEM1\MSVOA\_W\METHOD\82W070819S.M  
 Title : SW846 8260

Signal : TIC

peak #	R.T. min	first scan	max scan	last scan	PK TY	peak height	corr. area	corr. % max.	% of total
1	4.909	482	493	511	rBV2	12573	49865	4.07%	0.826%
2	7.141	847	859	869	rBV3	7388	23607	1.93%	0.391%
3	7.878	969	980	985	rBV	149628	356172	29.08%	5.898%
4	7.945	985	991	1002	rVB	292292	643029	52.51%	10.648%
5	8.305	1038	1050	1059	rBV	165691	369976	30.21%	6.126%
6	8.842	1128	1138	1150	rBV	449621	901562	73.62%	14.929%
7	10.323	1371	1381	1389	rBV	696171	1224638	100.00%	20.279%
8	11.628	1586	1595	1605	rBV	557294	966424	78.92%	16.003%
9	12.615	1749	1757	1768	rBV	415140	700650	57.21%	11.602%
10	13.560	1905	1912	1920	rBV	495140	789249	64.45%	13.069%
11	14.072	1986	1996	2005	rVB2	8152	13880	1.13%	0.230%

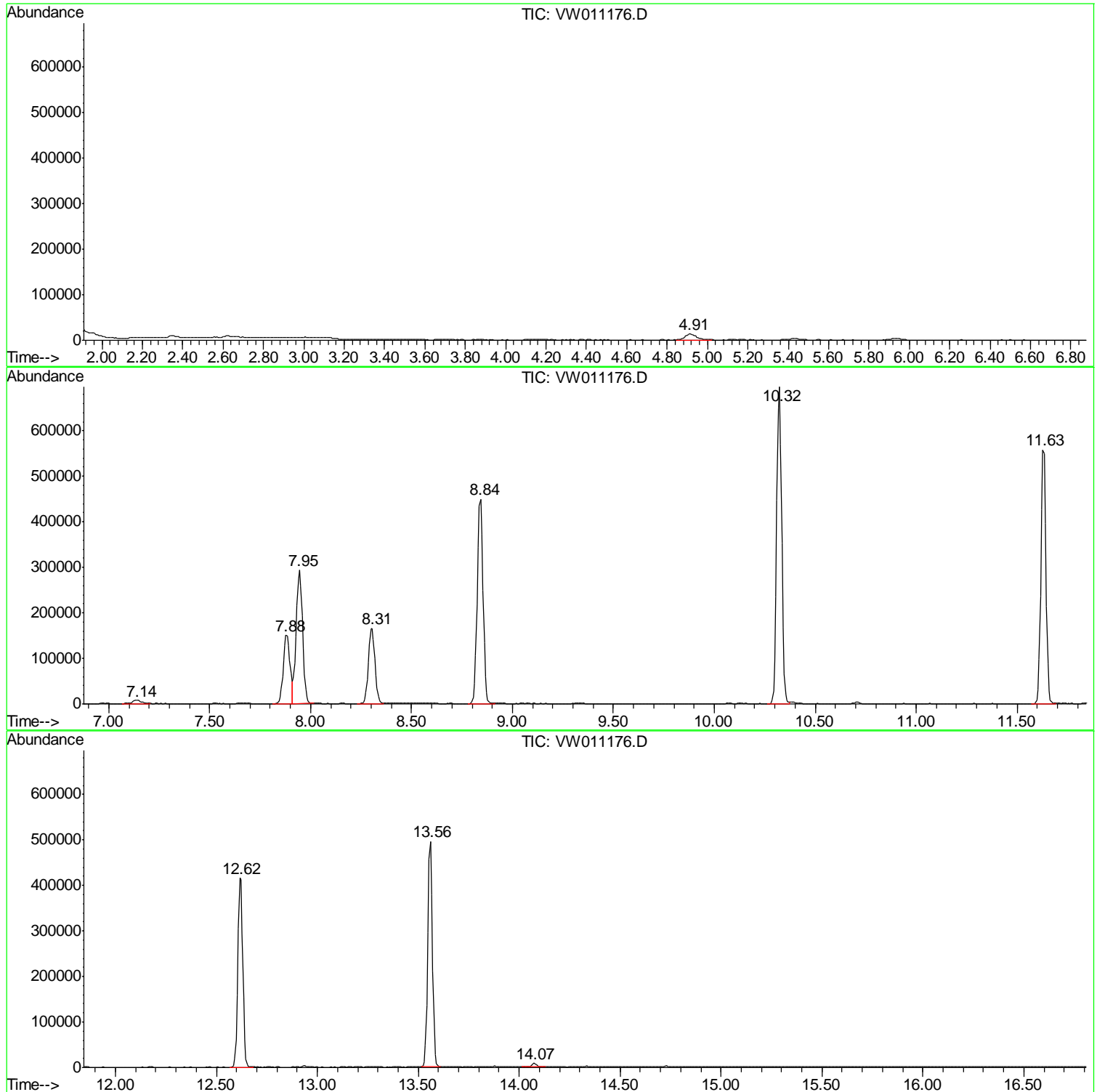
Sum of corrected areas: 6039052

Data Path : Z:\VOASRV\HPCHEM1\MSVOA W\DATA\VW070919\  
Data File : VW011176.D  
Acq On : 09 Jul 2019 13:53  
Operator : SY/VA  
Sample : K3687-01  
Misc : 6.35G/5ML/MSVOA W/SOIL  
ALS Vial : 8 Sample Multiplier: 1

Instrument :  
MSVOA\_W  
ClientSampleId :  
72-12017-VNJ-206

Quant Method : Z:\VOASRV\HPCHEM1\MSVOA\_W\METHOD\82W070819S.M  
Quant Title : SW846 8260

TIC Library : C:\DATABASE\NIST11.L  
TIC Integration Parameters: LSCINT.P



Data Path : Z:\VOASRV\HPCHEM1\MSVOA\_W\DATA\VW070919\  
Data File : VW011176.D  
Acq On : 09 Jul 2019 13:53  
Operator : SY/VA  
Sample : K3687-01  
Misc : 6.35G/5ML/MSVOA\_W/SOIL  
ALS Vial : 8 Sample Multiplier: 1

Instrument :  
MSVOA\_W  
ClientSampleId :  
72-12017-VNJ-206

Quant Method : Z:\VOASRV\HPCHEM1\MSVOA\_W\METHOD\82W070819S.M  
Quant Title : SW846 8260

TIC Library : C:\DATABASE\NIST11.L  
TIC Integration Parameters: LSCINT.P

No Library Search Compounds Detected

\*\*\*\*\*

Data Path : Z:\VOASRV\HPCHEM1\MSVOA\_W\DATA\VW070919\  
Data File : VW011176.D  
Acq On : 09 Jul 2019 13:53  
Operator : SY/VA  
Sample : K3687-01  
Misc : 6.35G/5ML/MSVOA\_W/SOIL  
ALS Vial : 8 Sample Multiplier: 1

Instrument :  
MSVOA\_W  
ClientSampleId :  
72-12017-VNJ-206

Quant Method : Z:\VOASRV\HPCHEM1\MSVOA\_W\METHOD\82W070819S.M  
Quant Title : SW846 8260

TIC Library : C:\DATABASE\NIST11.L  
TIC Integration Parameters: LSCINT.P

TIC Top Hit name	RT	EstConc	Units	Response	--Internal Standard--			
					#	RT	Resp	Conc

---