

Data Path : Z:\VOASRV\HPCHEM1\MSVOA W\DATA\VW070920\
 Data File : VW015823.D
 Acq On : 09 Jul 2020 12:43
 Operator : SY/VA
 Sample : VW0709SBL01
 Misc : 5.00G/5ML/MSVOA W/SOIL
 ALS Vial : 3 Sample Multiplier: 1

Instrument :
 MSVOA_W
 ClientSampleId :
 VW0709SBL01

Quant Time: Jul 10 05:40:12 2020
 Quant Method : Z:\VOASRV\HPCHEM1\MSVOA_W\METHOD\82W070720S.M
 Quant Title : SW846 8260
 QLast Update : Wed Jul 08 08:28:05 2020
 Response via : Initial Calibration

Internal Standards	R.T.	QIon	Response	Conc	Units	Dev(Min)
1) Pentafluorobenzene	7.95	168	183305	50.00	ug/l	0.00
34) 1,4-Difluorobenzene	8.85	114	309366	50.00	ug/l	0.00
63) Chlorobenzene-d5	11.63	117	281517	50.00	ug/l	0.00
72) 1,4-Dichlorobenzene-d4	13.56	152	126979	50.00	ug/l	0.00

System Monitoring Compounds

33) 1,2-Dichloroethane-d4	8.31	65	97687	51.75	ug/l	0.00
Spiked Amount				50.000		
			Recovery	=	103.50%	
35) Dibromofluoromethane	7.88	113	85351	47.29	ug/l	0.00
Spiked Amount				50.000		
			Recovery	=	94.58%	
50) Toluene-d8	10.32	98	324448	46.80	ug/l	0.00
Spiked Amount				50.000		
			Recovery	=	93.60%	
62) 4-Bromofluorobenzene	12.62	95	113926	44.78	ug/l	0.00
Spiked Amount				50.000		
			Recovery	=	89.56%	

Target Compounds

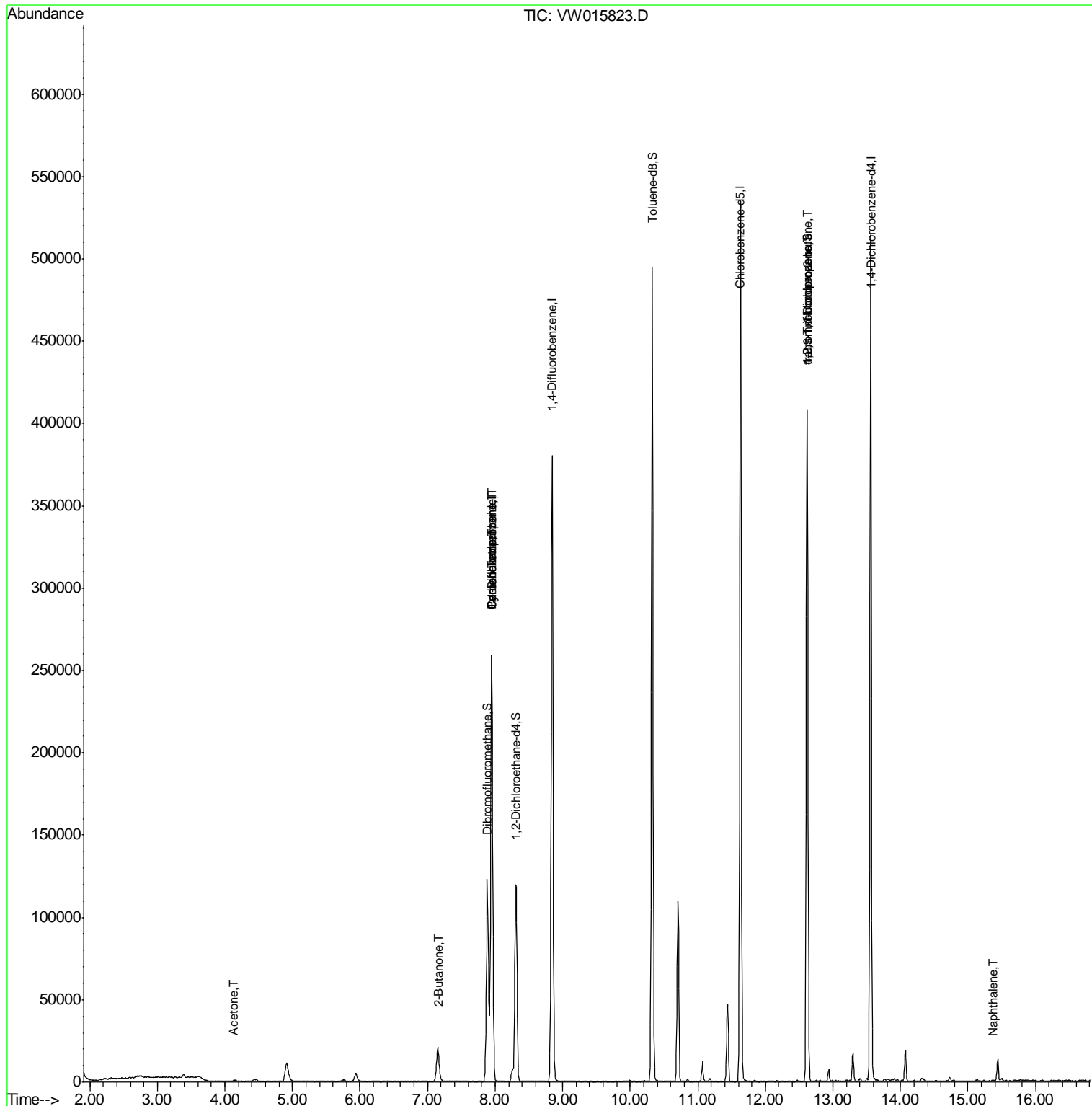
						Qvalue
16) Acetone	4.14	43	1858	5.261	ug/l #	89
25) 2-Butanone	7.17	43	1183	2.468	ug/l #	48
31) Cyclohexane	7.95	56	4676	1.431	ug/l #	12
36) 1,1-Dichloropropene	7.95	75	16386	5.373	ug/l #	50
38) Carbon Tetrachloride	7.95	117	19317	6.546	ug/l #	17
76) 1,2,3-Trichloropropane	12.62	75	63693	57.074	ug/l #	1
81) trans-1,4-Dichloro-2-buten	12.62	75	63693	123.513	ug/l #	7
95) Naphthalene	15.36	128	478	2.921	ug/l #	69

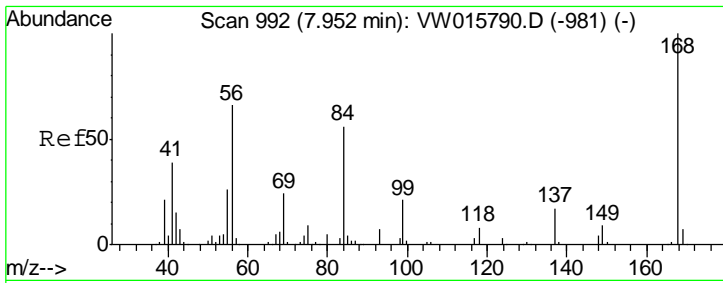
(#) = qualifier out of range (m) = manual integration (+) = signals summed

Data Path : Z:\VOASRV\HPCHEM1\MSVOA W\DATA\VW070920\
 Data File : VW015823.D
 Acq On : 09 Jul 2020 12:43
 Operator : SY/VA
 Sample : VW0709SBL01
 Misc : 5.00G/5ML/MSVOA W/SOIL
 ALS Vial : 3 Sample Multiplier: 1

Instrument :
 MSVOA_W
 Client Sampled :
 VW0709SBL01

Quant Time: Jul 10 05:40:12 2020
 Quant Method : Z:\VOASRV\HPCHEM1\MSVOA_W\METHOD\82W070720S.M
 Quant Title : SW846 8260
 QLast Update : Wed Jul 08 08:28:05 2020
 Response via : Initial Calibration

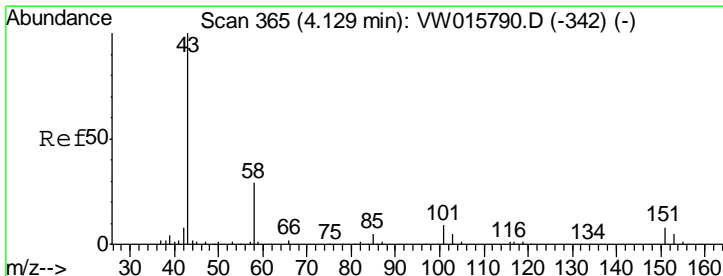
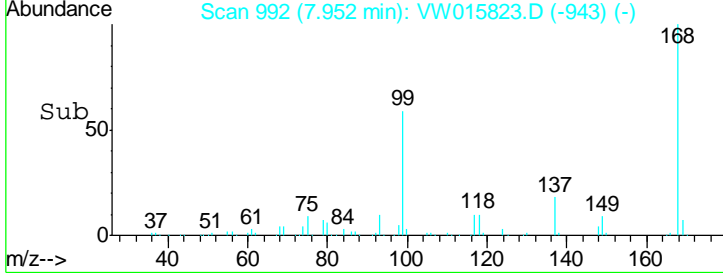
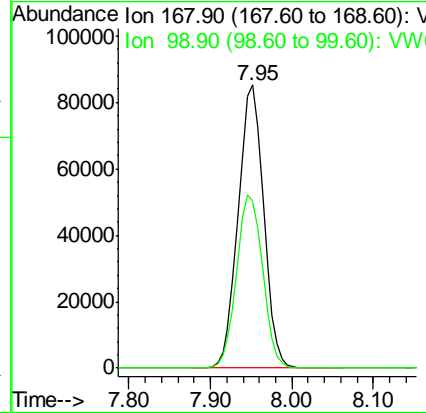
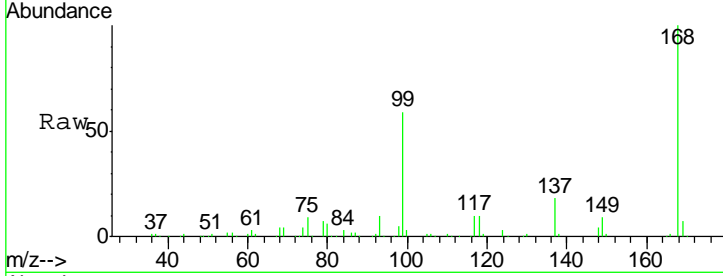




#1
 Pentafluorobenzene
 Concen: 50.000 ug/l
 RT: 7.95 min Scan# 992
 Delta R.T. -0.00 min
 Lab File: VW015823.D
 Acq: 09 Jul 2020 12:43

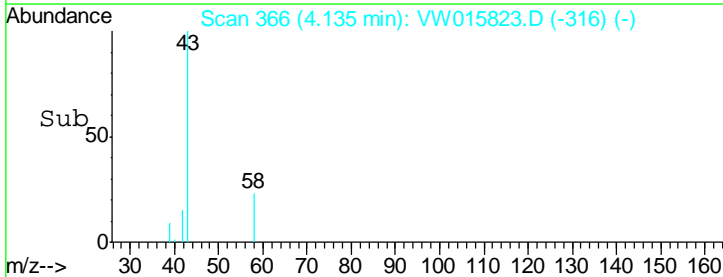
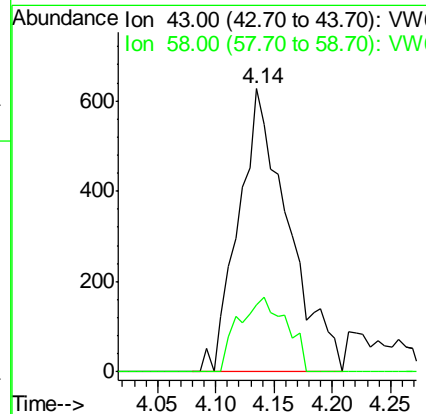
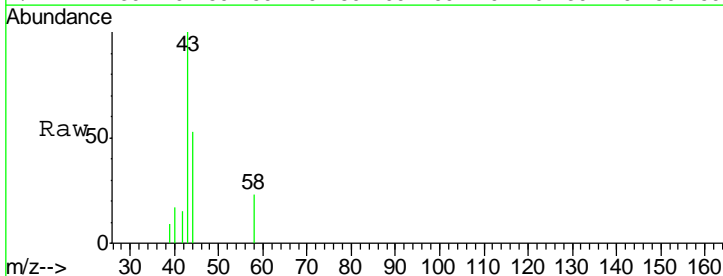
Instrument :
 MSVOA_W
ClientSampled :
 VW0709SBL01

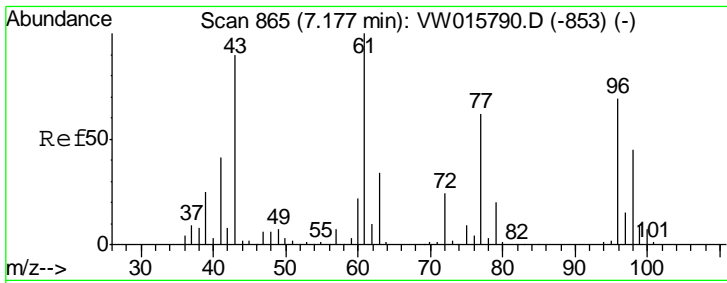
Tot Ion: 168 Resp: 183305
 Ion Ratio Lower Upper
 168 100
 99 59.0 47.8 71.8



#16
 Acetone
 Concen: 5.261 ug/l
 RT: 4.14 min Scan# 366
 Delta R.T. 0.01 min
 Lab File: VW015823.D
 Acq: 09 Jul 2020 12:43

Tgt Ion: 43 Resp: 1858
 Ion Ratio Lower Upper
 43 100
 58 23.4 23.5 35.3#

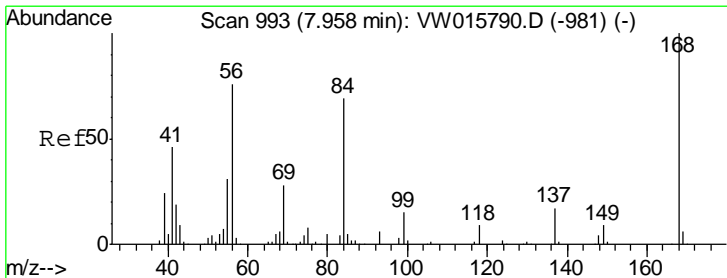
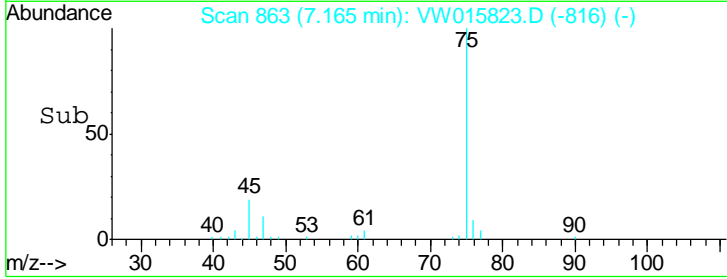
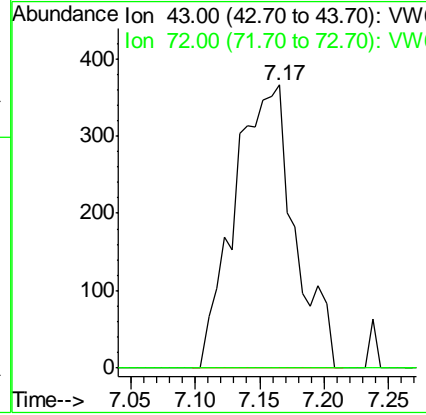
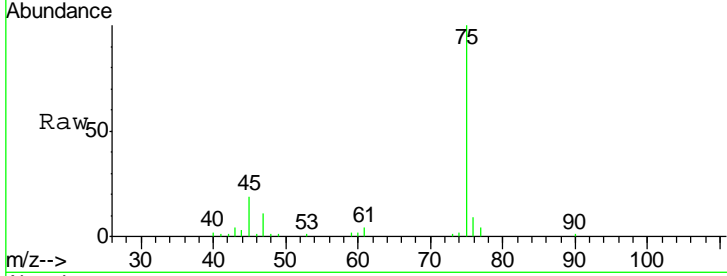




#25
 2-Butanone
 Concen: 2.468 ug/l
 RT: 7.17 min Scan# 863
 Delta R.T. -0.01 min
 Lab File: VW015823.D
 Acq: 09 Jul 2020 12:43

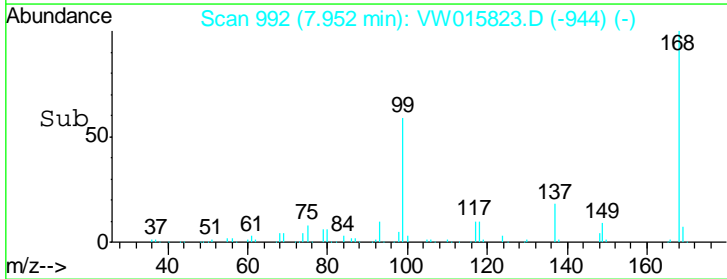
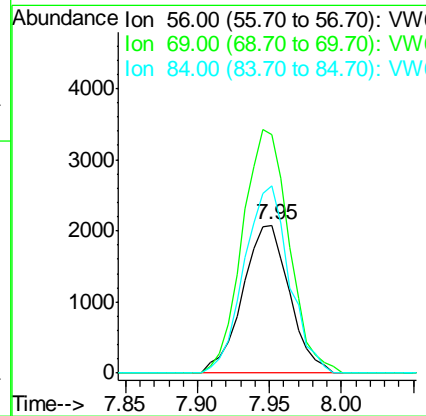
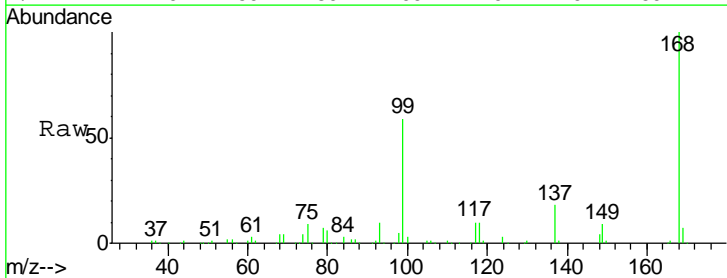
Instrument :
 MSVOA_W
 ClientSampled :
 VW0709SBL01

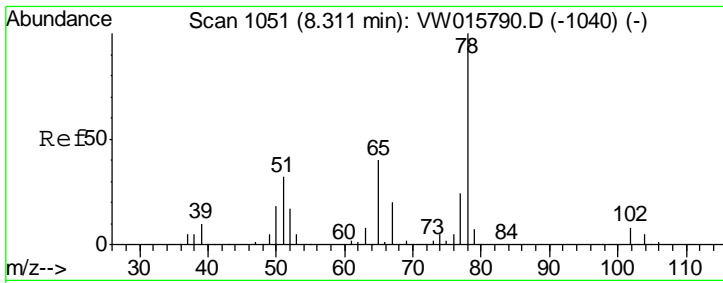
Tgt Ion: 43 Resp: 1183
 Ion Ratio Lower Upper
 43 100
 72 0.0 21.3 31.9#



#31
 Cyclohexane
 Concen: 1.431 ug/l
 RT: 7.95 min Scan# 992
 Delta R.T. -0.01 min
 Lab File: VW015823.D
 Acq: 09 Jul 2020 12:43

Tgt Ion: 56 Resp: 4676
 Ion Ratio Lower Upper
 56 100
 69 161.4 28.9 43.3#
 84 126.2 72.2 108.4#

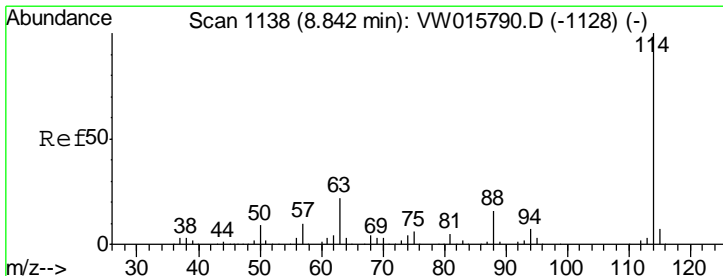
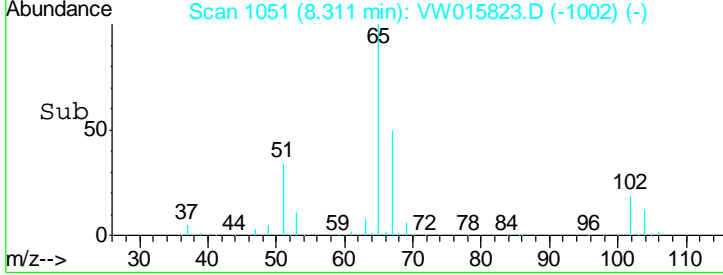
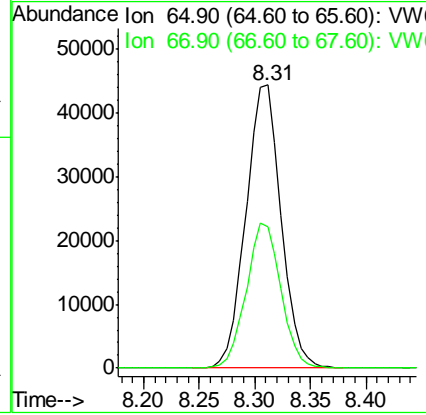
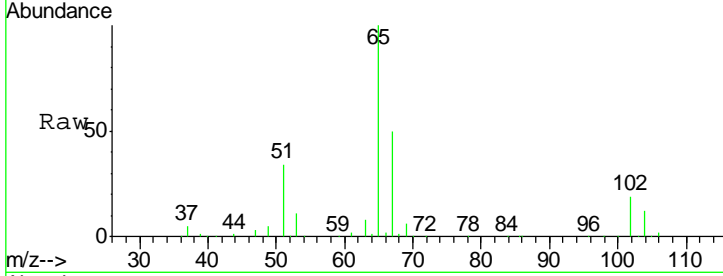




#33
 1,2-Dichloroethane-d4
 Concen: 51.752 ug/l
 RT: 8.31 min Scan# 1051
 Delta R.T. -0.00 min
 Lab File: VW015823.D
 Acq: 09 Jul 2020 12:43

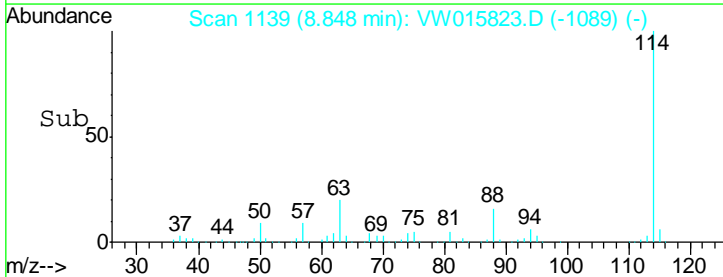
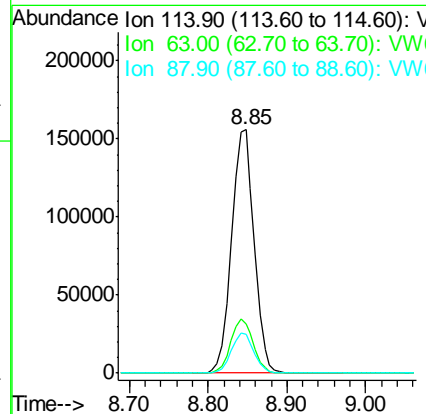
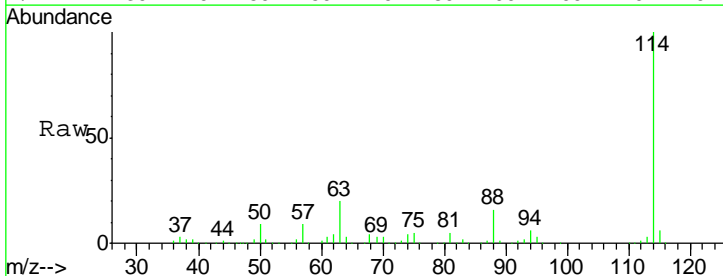
Instrument :
 MSVOA_W
ClientSampled :
 VW0709SBL01

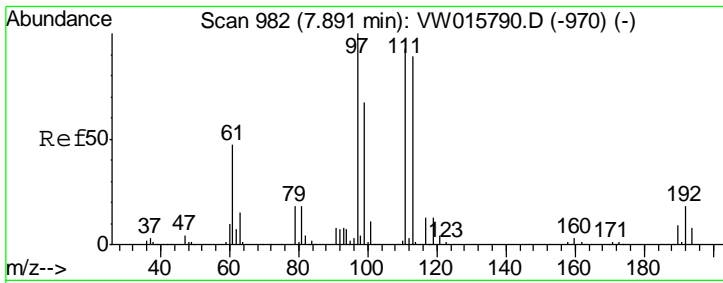
Tgt Ion	Resp	Lower	Upper
65	100		
67	50.6	0.0	101.4



#34
 1,4-Difluorobenzene
 Concen: 50.000 ug/l
 RT: 8.85 min Scan# 1139
 Delta R.T. 0.01 min
 Lab File: VW015823.D
 Acq: 09 Jul 2020 12:43

Tgt Ion	Resp	Lower	Upper
114	100		
63	20.3	0.0	44.4
88	16.0	0.0	32.6

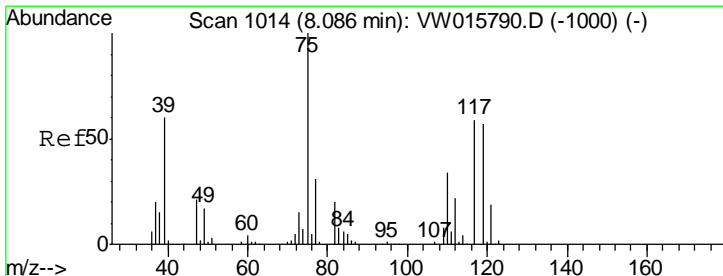
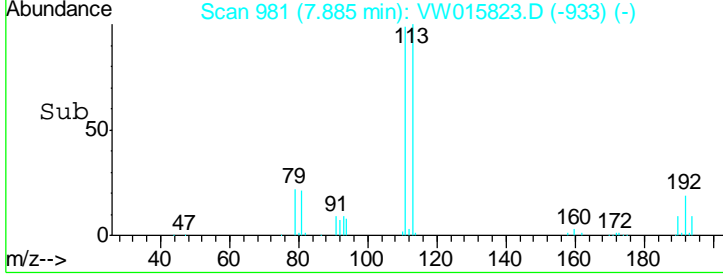
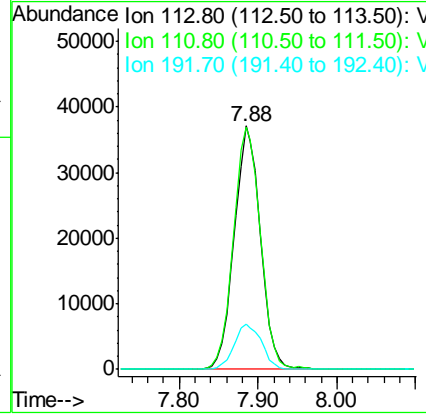
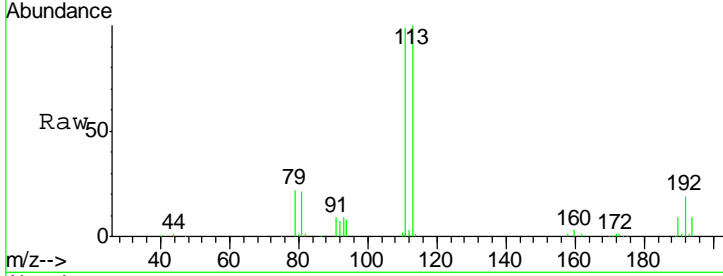




#35
 Dibromofluoromethane
 Concen: 47.289 ug/l
 RT: 7.88 min Scan# 981
 Delta R.T. -0.01 min
 Lab File: VW015823.D
 Acq: 09 Jul 2020 12:43

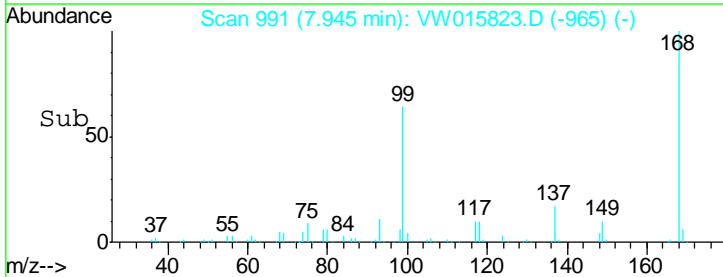
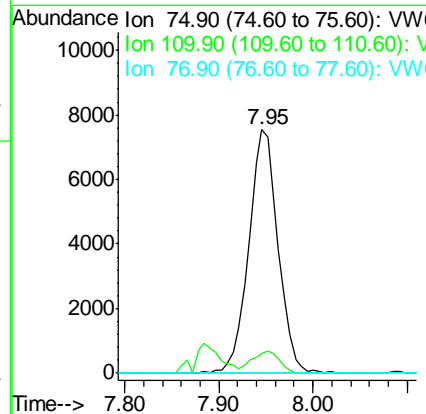
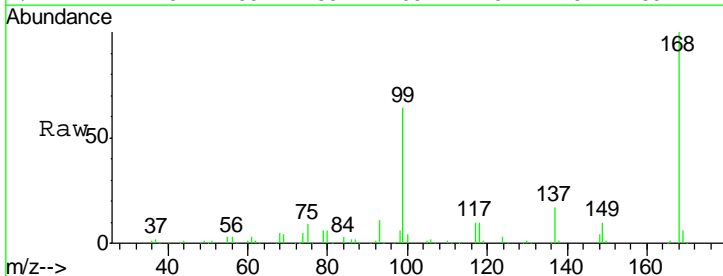
Instrument :
 MSVOA_W
 ClientSampled :
 VW0709SBL01

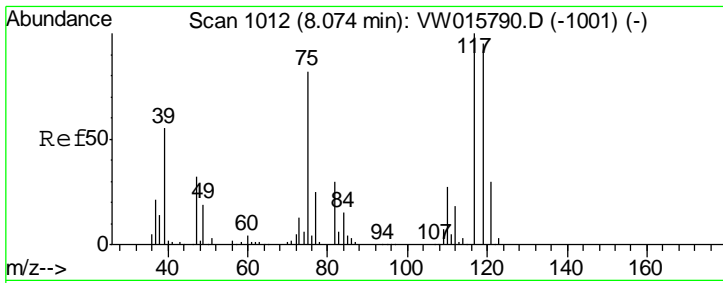
Tgt Ion	Resp	Lower	Upper
113	100		
111	102.5	82.8	124.2
192	19.4	15.4	23.2



#36
 1,1-Dichloropropene
 Concen: 5.373 ug/l
 RT: 7.95 min Scan# 991
 Delta R.T. -0.14 min
 Lab File: VW015823.D
 Acq: 09 Jul 2020 12:43

Tgt Ion	Resp	Lower	Upper
75	100		
110	8.5	16.8	50.3#
77	0.0	24.7	37.1#

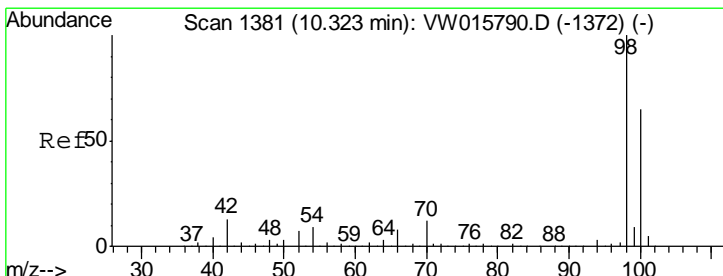
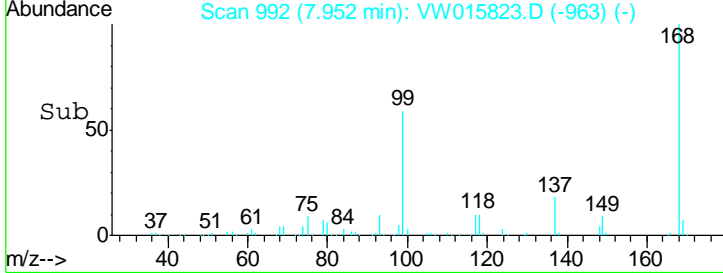
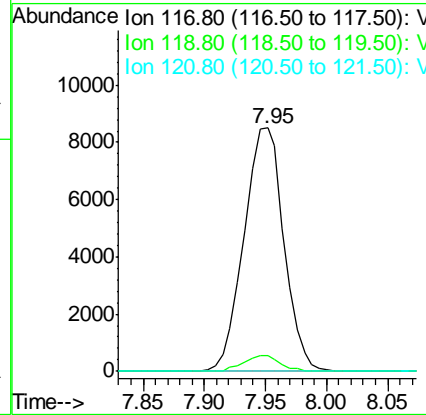
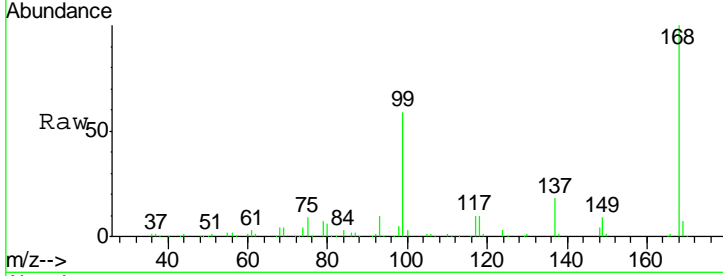




#38
 Carbon Tetrachloride
 Concen: 6.546 ug/l
 RT: 7.95 min Scan# 992
 Delta R.T. -0.12 min
 Lab File: VW015823.D
 Acq: 09 Jul 2020 12:43

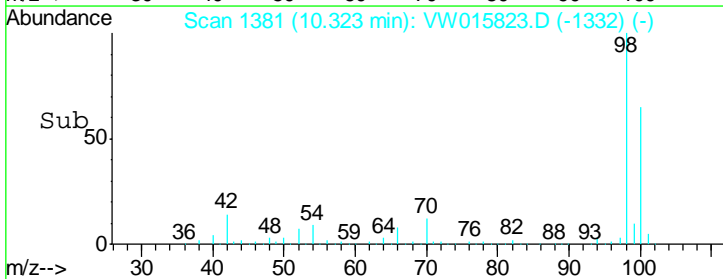
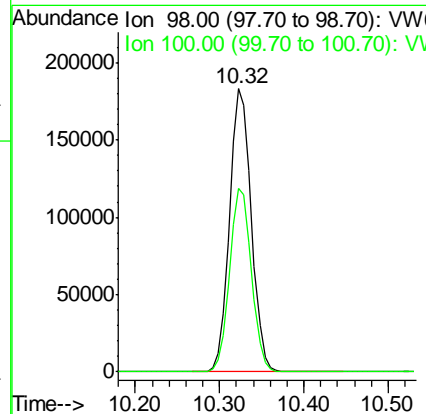
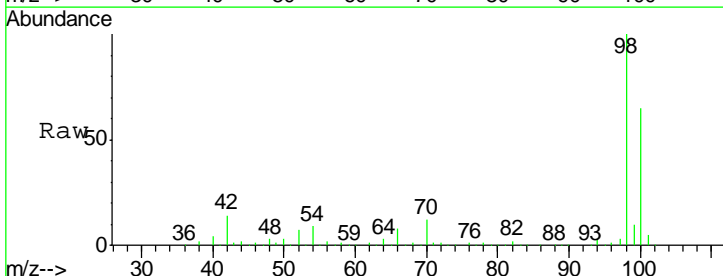
Instrument :
 MSVOA_W
 ClientSampled :
 VW0709SBL01

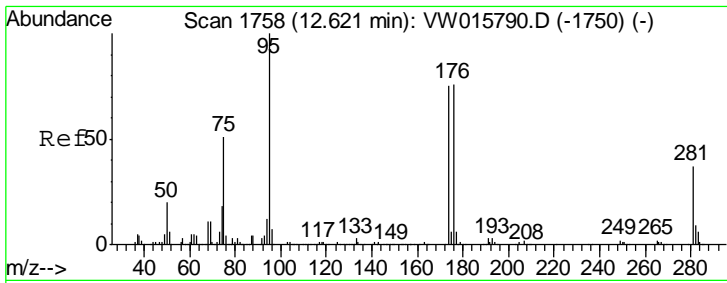
Tgt Ion	Resp	Lower	Upper
117	19317		
117	100		
119	6.4	76.3	114.5#
121	0.0	24.0	36.0#



#50
 Toluene-d8
 Concen: 46.798 ug/l
 RT: 10.32 min Scan# 1381
 Delta R.T. -0.00 min
 Lab File: VW015823.D
 Acq: 09 Jul 2020 12:43

Tgt Ion	Resp	Lower	Upper
98	324448		
98	100		
100	65.0	52.6	79.0

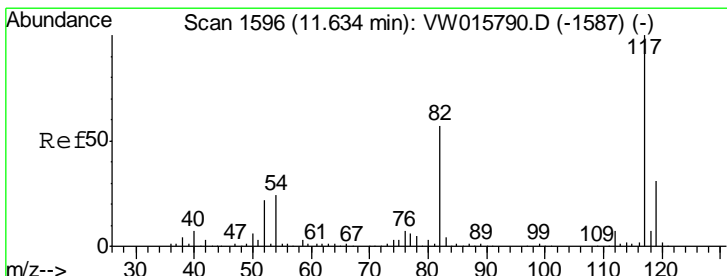
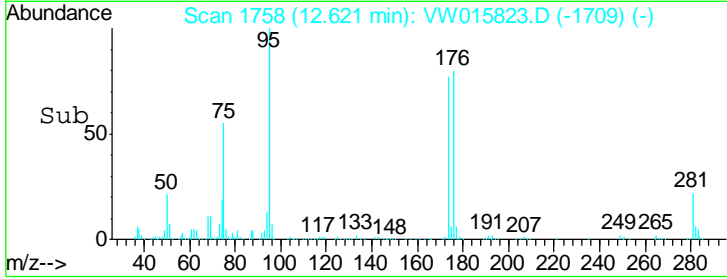
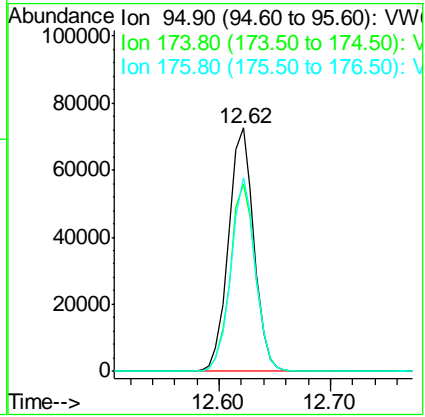
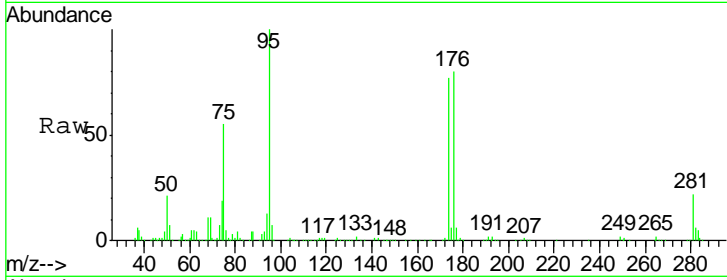




#62
 4-Bromofluorobenzene
 Concen: 44.783 ug/l
 RT: 12.62 min Scan# 1758
 Delta R.T. -0.00 min
 Lab File: VW015823.D
 Acq: 09 Jul 2020 12:43

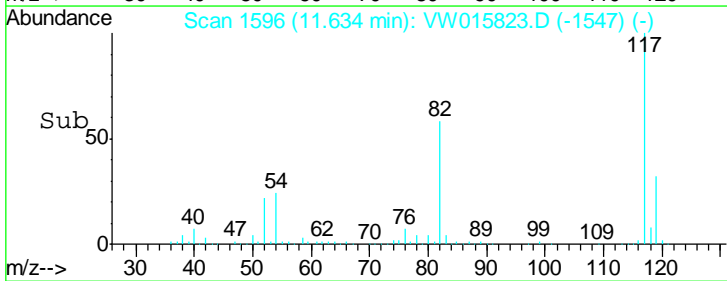
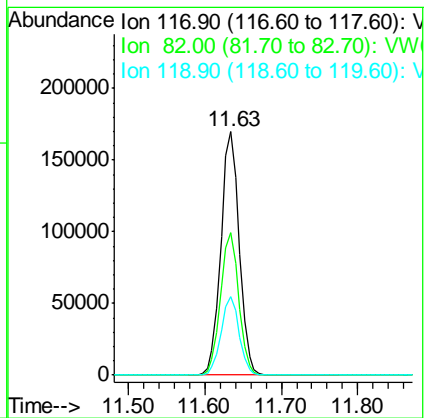
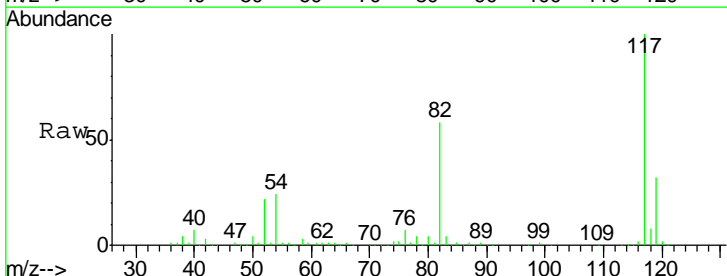
Instrument : MSVOA_W
 ClientSampled : VW0709SBL01

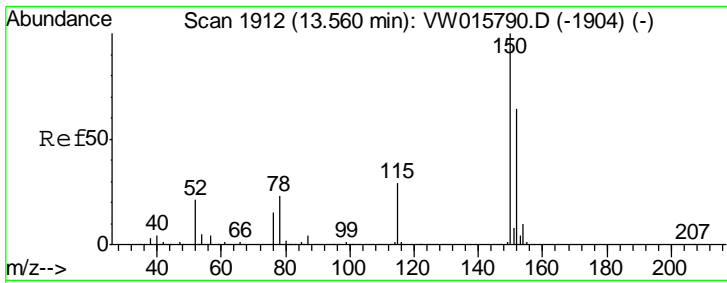
Tgt Ion	Resp	Lower	Upper
95	113926		
174	76.8	0.0	150.2
176	76.7	0.0	148.4



#63
 Chlorobenzene-d5
 Concen: 50.000 ug/l
 RT: 11.63 min Scan# 1596
 Delta R.T. -0.00 min
 Lab File: VW015823.D
 Acq: 09 Jul 2020 12:43

Tgt Ion	Resp	Lower	Upper
117	281517		
82	58.3	45.5	68.3
119	32.4	25.0	37.6

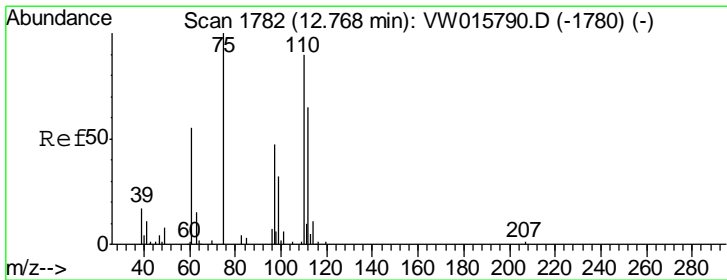
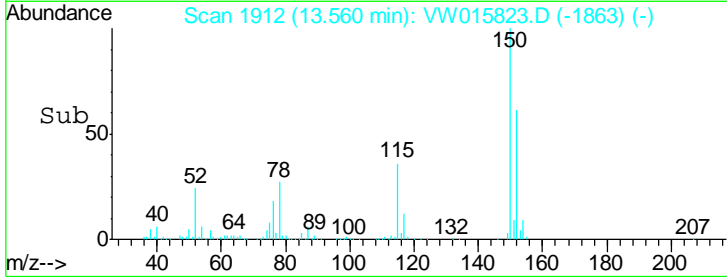
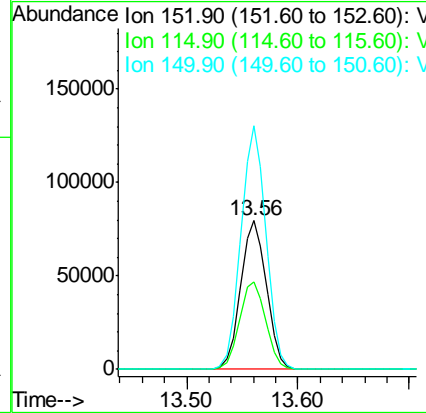
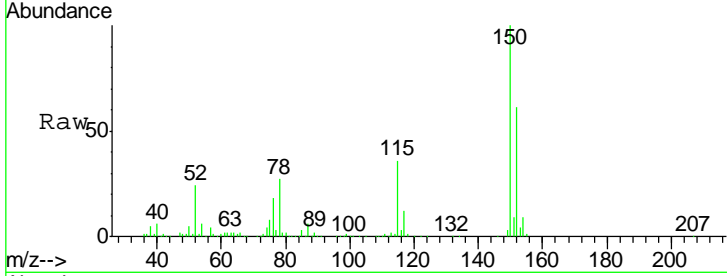




#72
 1,4-Dichlorobenzene-d4
 Concen: 50.000 ug/l
 RT: 13.56 min Scan# 1912
 Delta R.T. -0.00 min
 Lab File: VW015823.D
 Acq: 09 Jul 2020 12:43

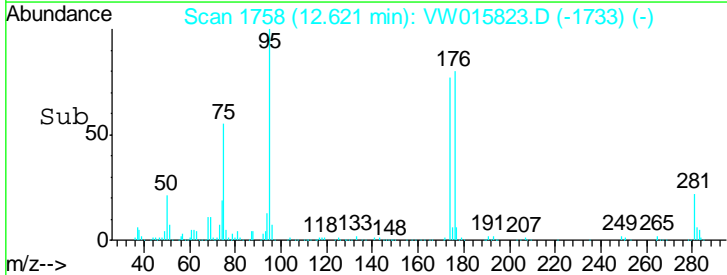
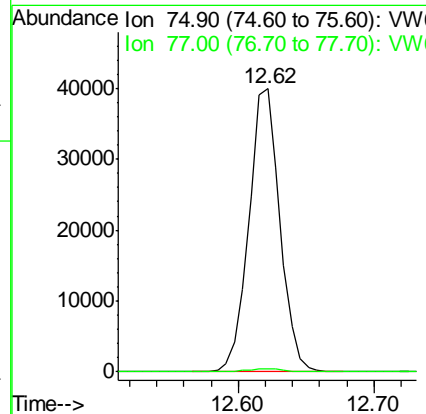
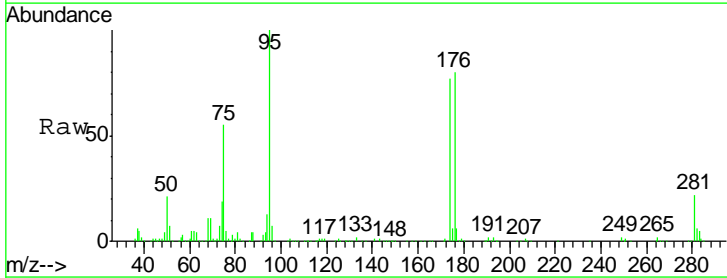
Instrument :
 MSVOA_W
 ClientSampled :
 VW0709SBL01

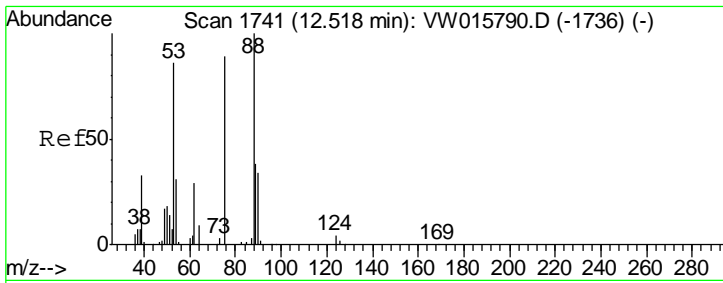
Tgt Ion	Resp	Lower	Upper
152	100		
115	59.7	29.9	89.7
150	159.0	0.0	350.8



#76
 1,2,3-Trichloropropane
 Concen: 57.074 ug/l
 RT: 12.62 min Scan# 1758
 Delta R.T. -0.15 min
 Lab File: VW015823.D
 Acq: 09 Jul 2020 12:43

Tgt Ion	Resp	Lower	Upper
75	100		
77	1.2	177.3	532.0#

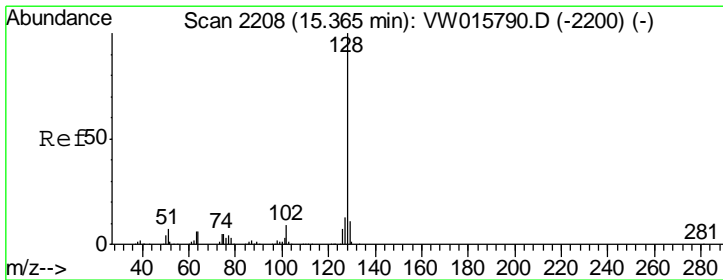
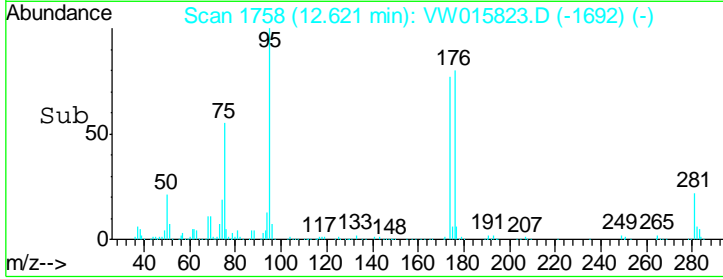
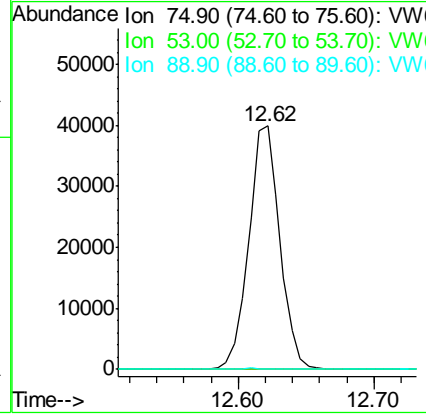
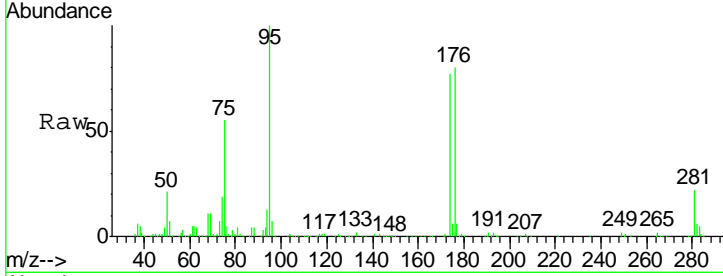




#81
 trans-1,4-Dichloro-2-butene
 Concen: 123.513 ug/l
 RT: 12.62 min Scan# 1758
 Delta R.T. 0.10 min
 Lab File: VW015823.D
 Acq: 09 Jul 2020 12:43

Instrument :
 MSVOA_W
 ClientSampled :
 VW0709SBL01

Tgt Ion	Resp	Lower	Upper
75	100		
53	0.0	85.9	128.9#
89	0.3	36.2	54.4#



#95
 Naphthalene
 Concen: 2.921 ug/l
 RT: 15.36 min Scan# 2208
 Delta R.T. 0.00 min
 Lab File: VW015823.D
 Acq: 09 Jul 2020 12:43

Tgt Ion	Resp	Lower	Upper
128	100		
127	0.0	10.6	16.0#
129	0.0	8.7	13.1#

