

Data Path : Z:\voasrv\HPCHEM1\MSVOA\_W\Data\VW070921\  
 Data File : VW019411.D  
 Acq On : 09 Jul 2021 20:49  
 Operator : SY/VA  
 Sample : M2970-07  
 Misc : 3.91G/10ML/MSVOA\_W/SOIL  
 ALS Vial : 27 Sample Multiplier: 1

Instrument :  
 MSVOA\_W  
 ClientSampleId :  
 BGEA5

Integration Parameters: LSCINT.P

Integrator: RTE  
 Smoothing : OFF Filtering: 5  
 Sampling : 1 Min Area: 0 % of largest Peak  
 Start Thrs: 0.2 Max Peaks: 100  
 Stop Thrs : 0 Peak Location: TOP

If leading or trailing edge < 100 prefer < Baseline drop else tangent >  
 Peak separation: 5

Method : Z:\voasrv\HPCHEM1\MSVOA\_W\Method\SFAMWLM070921SMA.M  
 Title : SFAM01.0

Signal : TIC: VW019411.D\data.ms

peak #	R.T. min	first scan	max scan	last scan	PK TY	peak height	corr. area	corr. % max.	% of total
1	2.355	69	74	83	rVB	66656	115062	12.53%	2.021%
2	2.898	156	163	172	rBV	45045	101112	11.01%	1.776%
3	3.544	267	269	272	rBV3	377	506	0.06%	0.009%
4	3.721	295	298	301	rBV	337	511	0.06%	0.009%
5	3.830	315	316	320	rBV	143	188	0.02%	0.003%
6	3.934	332	333	336	rVB	199	116	0.01%	0.002%
7	4.019	336	347	359	rBV	117941	314821	34.28%	5.529%
8	4.135	361	366	375	rVB	5860	15412	1.68%	0.271%
9	4.379	399	406	409	rBV3	1225	2565	0.28%	0.045%
10	4.562	434	436	438	rVB2	196	153	0.02%	0.003%
11	4.635	446	448	449	rBV	222	165	0.02%	0.003%
12	4.922	484	495	510	rBV	27224	86492	9.42%	1.519%
13	5.214	541	543	546	rBV2	250	230	0.03%	0.004%
14	5.361	566	567	569	rBV	188	142	0.02%	0.002%
15	5.434	577	579	583	rVB2	256	324	0.04%	0.006%
16	5.830	643	644	647	rBV2	238	214	0.02%	0.004%
17	5.946	655	663	674	rVV5	5105	15273	1.66%	0.268%
18	6.037	676	678	679	rVB	170	99	0.01%	0.002%
19	6.056	679	681	684	rBV	337	239	0.03%	0.004%
20	6.098	686	688	691	rBV2	181	239	0.03%	0.004%
21	6.159	696	698	699	rBV	202	162	0.02%	0.003%
22	6.190	701	703	706	rBV2	177	197	0.02%	0.003%
23	6.287	717	719	722	rBV3	266	277	0.03%	0.005%
24	6.409	737	739	741	rBV	146	131	0.01%	0.002%
25	6.427	741	742	744	rVB	201	104	0.01%	0.002%
26	6.464	744	748	750	rBV2	223	264	0.03%	0.005%
27	6.683	782	784	787	rBV	150	172	0.02%	0.003%
28	6.744	789	794	795	rBV2	193	212	0.02%	0.004%
29	6.909	819	821	824	rVB2	227	220	0.02%	0.004%
30	6.952	824	828	830	rBV2	138	187	0.02%	0.003%
31	7.086	840	850	857	rBV	21400	63992	6.97%	1.124%
32	7.378	897	898	900	rBV	174	131	0.01%	0.002%
33	7.476	912	914	915	rBV	204	120	0.01%	0.002%
34	7.494	915	917	920	rBV	139	204	0.02%	0.004%
35	7.653	931	943	957	rBV	155674	382040	41.60%	6.710%
36	7.927	986	988	990	rBV	301	271	0.03%	0.005%

Data Path : Z:\voasrv\HPCHEM1\MSVOA\_W\Data\VW070921\  
 Data File : VW019411.D  
 Acq On : 09 Jul 2021 20:49  
 Operator : SY/VA  
 Sample : M2970-07  
 Misc : 3.91G/10ML/MSVOA\_W/SOIL  
 ALS Vial : 27 Sample Multiplier: 1

Instrument :  
 MSVOA\_W  
 ClientSampleId :  
 BGEA5

Integration Parameters: LSCINT.P  
 Integrator: RTE  
 Smoothing : OFF  
 Sampling : 1  
 Start Thrs: 0.2  
 Stop Thrs : 0  
 Filtering: 5  
 Min Area: 0 % of largest Peak  
 Max Peaks: 100  
 Peak Location: TOP

If leading or trailing edge < 100 prefer < Baseline drop else tangent >  
 Peak separation: 5

Method : Z:\voasrv\HPCHEM1\MSVOA\_W\Method\SFAMWLM070921SMA.M  
 Title : SFAM01.0

37	8.043	1004	1007	1008	rBV2	274	222	0.02%	0.004%
38	8.073	1010	1012	1015	rBV	103	134	0.01%	0.002%
39	8.153	1023	1025	1028	rVB	210	189	0.02%	0.003%
40	8.183	1028	1030	1035	rBV2	203	342	0.04%	0.006%
41	8.281	1035	1046	1063	rBV2	318509	918383	100.00%	16.130%
42	8.519	1083	1085	1088	rVB	169	168	0.02%	0.003%
43	8.555	1088	1091	1092	rBV	148	108	0.01%	0.002%
44	8.573	1092	1094	1097	rBV2	251	295	0.03%	0.005%
45	8.701	1110	1115	1120	rBV2	733	1319	0.14%	0.023%
46	8.775	1125	1127	1129	rVB	239	164	0.02%	0.003%
47	8.848	1129	1139	1159	rBV	283107	563618	61.37%	9.899%
48	9.079	1174	1177	1182	rVB4	1139	2134	0.23%	0.037%
49	9.195	1194	1196	1197	rVB	191	116	0.01%	0.002%
50	9.274	1200	1209	1219	rBV	208870	428385	46.65%	7.524%
51	9.427	1232	1234	1236	rBV2	212	236	0.03%	0.004%
52	9.543	1251	1253	1255	rVB	238	160	0.02%	0.003%
53	9.610	1261	1264	1266	rVB2	165	196	0.02%	0.003%
54	9.665	1268	1273	1278	rBV4	1347	2622	0.29%	0.046%
55	9.835	1299	1301	1304	rBV	220	312	0.03%	0.005%
56	9.957	1318	1321	1326	rVB3	890	1482	0.16%	0.026%
57	10.037	1326	1334	1343	rBV	79511	142428	15.51%	2.502%
58	10.329	1374	1382	1389	rVV	393794	713698	77.71%	12.535%
59	10.390	1389	1392	1399	rVB	4306	6928	0.75%	0.122%
60	10.457	1399	1403	1406	rBV3	454	580	0.06%	0.010%
61	10.579	1416	1423	1433	rVB	50775	88719	9.66%	1.558%
62	10.707	1440	1444	1449	rVB3	2593	4144	0.45%	0.073%
63	10.780	1455	1456	1458	rBV2	169	134	0.01%	0.002%
64	10.805	1458	1460	1462	rVV2	172	170	0.02%	0.003%
65	10.860	1465	1469	1474	rBV4	491	840	0.09%	0.015%
66	10.927	1474	1480	1498	rBV2	80770	155751	16.96%	2.736%
67	11.177	1519	1521	1522	rBV2	276	223	0.02%	0.004%
68	11.305	1540	1542	1543	rBV	270	156	0.02%	0.003%
69	11.323	1543	1545	1547	rVV2	171	158	0.02%	0.003%
70	11.408	1557	1559	1564	rVB2	216	318	0.03%	0.006%
71	11.451	1564	1566	1568	rVB	256	178	0.02%	0.003%
72	11.475	1568	1570	1573	rBV	328	429	0.05%	0.008%
73	11.506	1573	1575	1578	rBV2	345	463	0.05%	0.008%
74	11.548	1580	1582	1584	rVB2	295	239	0.03%	0.004%
75	11.573	1584	1586	1587	rVB2	314	171	0.02%	0.003%
76	11.634	1588	1596	1606	rBV	343270	584923	63.69%	10.273%

Data Path : Z:\voasrv\HPCHEM1\MSVOA\_W\Data\VW070921\  
 Data File : VW019411.D  
 Acq On : 09 Jul 2021 20:49  
 Operator : SY/VA  
 Sample : M2970-07  
 Misc : 3.91G/10ML/MSVOA\_W/SOIL  
 ALS Vial : 27 Sample Multiplier: 1

Instrument :  
 MSVOA\_W  
 ClientSampleId :  
 BGEA5

Integration Parameters: LSCINT.P  
 Integrator: RTE  
 Smoothing : OFF Filtering: 5  
 Sampling : 1 Min Area: 0 % of largest Peak  
 Start Thrs: 0.2 Max Peaks: 100  
 Stop Thrs : 0 Peak Location: TOP

If leading or trailing edge < 100 prefer < Baseline drop else tangent >  
 Peak separation: 5

Method : Z:\voasrv\HPCHEM1\MSVOA\_W\Method\SFAMWLM070921SMA.M  
 Title : SFAM01.0

77	11.841	1625	1630	1638	rBV5	1890	3810	0.41%	0.067%
78	12.115	1671	1675	1677	rBV2	283	375	0.04%	0.007%
79	12.164	1679	1683	1690	rVB4	531	1000	0.11%	0.018%
80	12.225	1690	1693	1694	rBV2	235	239	0.03%	0.004%
81	12.311	1705	1707	1709	rBV2	177	140	0.02%	0.002%
82	12.335	1709	1711	1713	rVB2	240	171	0.02%	0.003%
83	12.359	1713	1715	1718	rBV2	320	349	0.04%	0.006%
84	12.469	1729	1733	1739	rBV3	1828	2844	0.31%	0.050%
85	12.542	1742	1745	1746	rVV	282	254	0.03%	0.004%
86	12.597	1750	1754	1761	rVV4	2677	5571	0.61%	0.098%
87	12.695	1763	1770	1777	rVV	132862	218229	23.76%	3.833%
88	12.756	1777	1780	1787	rVV4	1377	2509	0.27%	0.044%
89	12.810	1787	1789	1792	rVV3	392	358	0.04%	0.006%
90	12.871	1796	1799	1800	rBV2	385	324	0.04%	0.006%
91	12.945	1807	1811	1819	rVB7	1669	4228	0.46%	0.074%
92	13.042	1820	1827	1831	rBV7	1542	3029	0.33%	0.053%
93	13.249	1858	1861	1863	rBV2	932	1228	0.13%	0.022%
94	13.560	1905	1912	1918	rBV	219362	355181	38.67%	6.238%
95	13.853	1953	1960	1969	rBV	203477	337051	36.70%	5.920%
96	14.066	1990	1995	2002	rBV	6937	11418	1.24%	0.201%
97	14.219	2019	2020	2021	rBV	511	296	0.03%	0.005%
98	14.328	2032	2038	2044	rBV7	1777	4458	0.49%	0.078%
99	14.792	2110	2114	2119	rVB5	1683	2412	0.26%	0.042%
100	15.487	2223	2228	2234	rVB	7661	14279	1.55%	0.251%

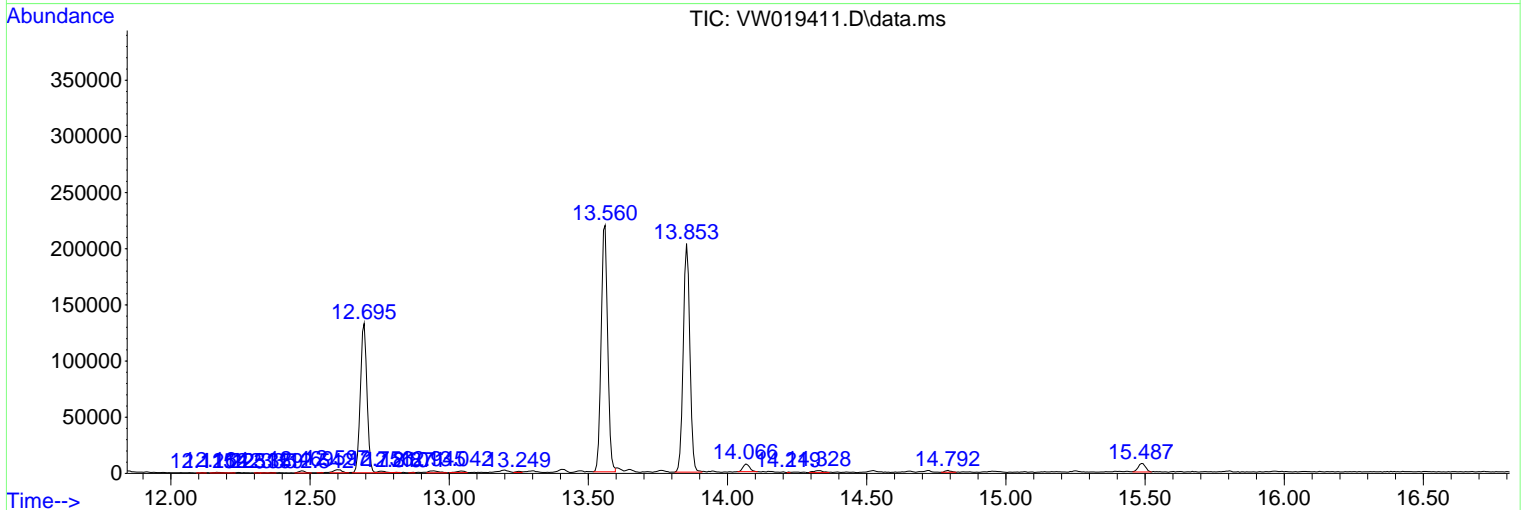
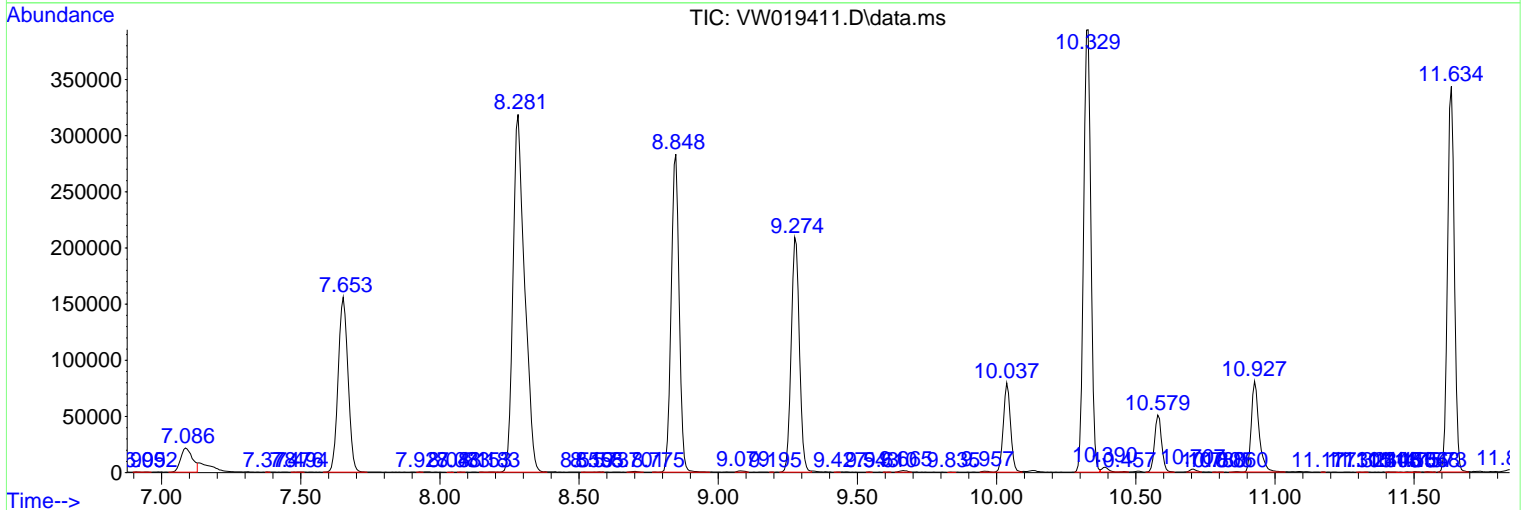
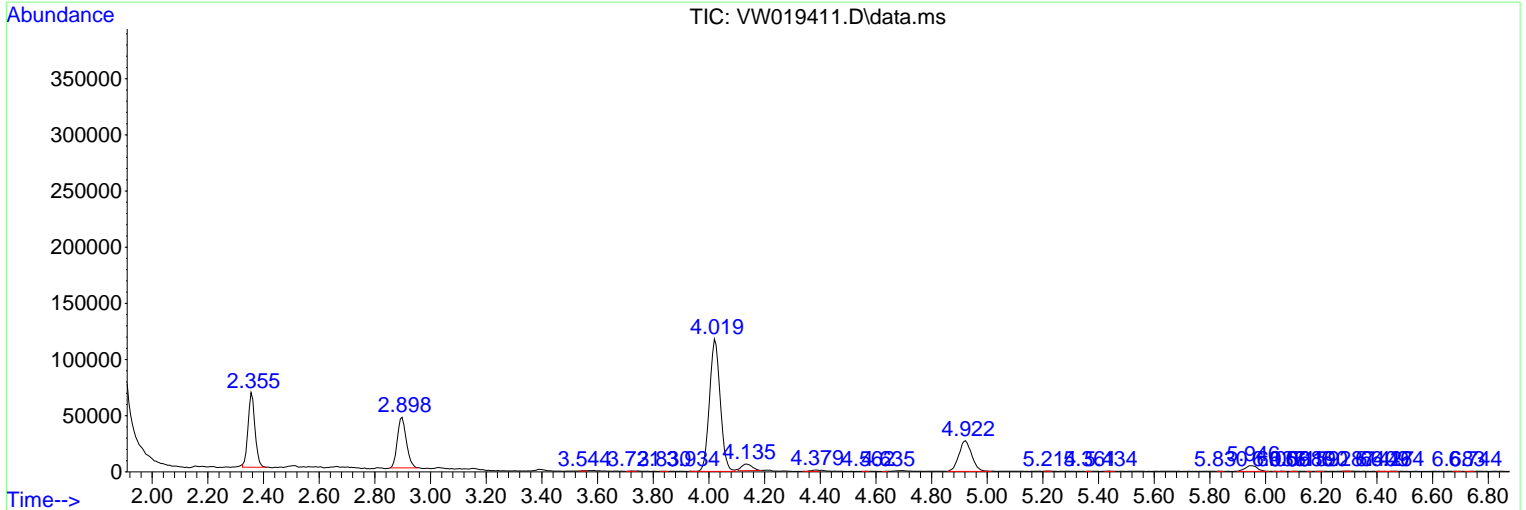
Sum of corrected areas: 5693535

Data Path : Z:\voasrv\HPCHEM1\MSVOA\_W\Data\VW070921\  
 Data File : VW019411.D  
 Acq On : 09 Jul 2021 20:49  
 Operator : SY/VA  
 Sample : M2970-07  
 Misc : 3.91G/10ML/MSVOA\_W/SOIL  
 ALS Vial : 27 Sample Multiplier: 1

Instrument :  
 MSVOA\_W  
 ClientSampleId :  
 BGEA5

Quant Method : Z:\voasrv\HPCHEM1\MSVOA\_W\Method\SFAMWLM070921SMA.M  
 Quant Title : SFAM01.0

TIC Library : C:\DATABASE\NIST11.L  
 TIC Integration Parameters: LSCINT.P



Data Path : Z:\voasrv\HPCHEM1\MSVOA\_W\Data\VW070921\  
Data File : VW019411.D  
Acq On : 09 Jul 2021 20:49  
Operator : SY/VA  
Sample : M2970-07  
Misc : 3.91G/10ML/MSVOA\_W/SOIL  
ALS Vial : 27 Sample Multiplier: 1

Instrument :  
MSVOA\_W  
ClientSampleId :  
BGEA5

Quant Method : Z:\voasrv\HPCHEM1\MSVOA\_W\Method\SFAMWLM070921SMA.M  
Quant Title : SFAM01.0

TIC Library : C:\DATABASE\NIST11.L  
TIC Integration Parameters: LSCINT.P

No Library Search Compounds Detected

\*\*\*\*\*

Data Path : Z:\voasrv\HPCHEM1\MSVOA\_W\Data\VW070921\  
Data File : VW019411.D  
Acq On : 09 Jul 2021 20:49  
Operator : SY/VA  
Sample : M2970-07  
Misc : 3.91G/10ML/MSVOA\_W/SOIL  
ALS Vial : 27 Sample Multiplier: 1

Instrument :  
MSVOA\_W  
ClientSampleId :  
BGEA5

Quant Method : Z:\voasrv\HPCHEM1\MSVOA\_W\Method\SFAMWLM070921SMA.M  
Quant Title : SFAM01.0

TIC Library : C:\DATABASE\NIST11.L  
TIC Integration Parameters: LSCINT.P

TIC Top Hit name	RT	EstConc	Units	Response	--Internal Standard--		
					#	RT	Resp Conc

---