

Data Path : Z:\VOASRV\HPCHEM1\MSVOA W\DATA\VW071018\
 Data File : VW003854.D
 Acq On : 11 Jul 2018 05:30
 Operator : SY/AP
 Sample : J3914-01
 Misc : 3.24G/5ML/MSVOA W/SOIL
 ALS Vial : 42 Sample Multiplier: 1

Instrument :
 MSVOA_W
 ClientSampleId :
 B1

Quant Time: Jul 11 07:03:39 2018
 Quant Method : Z:\VOASRV\HPCHEM1\MSVOA_W\METHOD\82W070718S.M
 Quant Title : SW846 8260
 QLast Update : Sat Jul 07 05:07:25 2018
 Response via : Initial Calibration

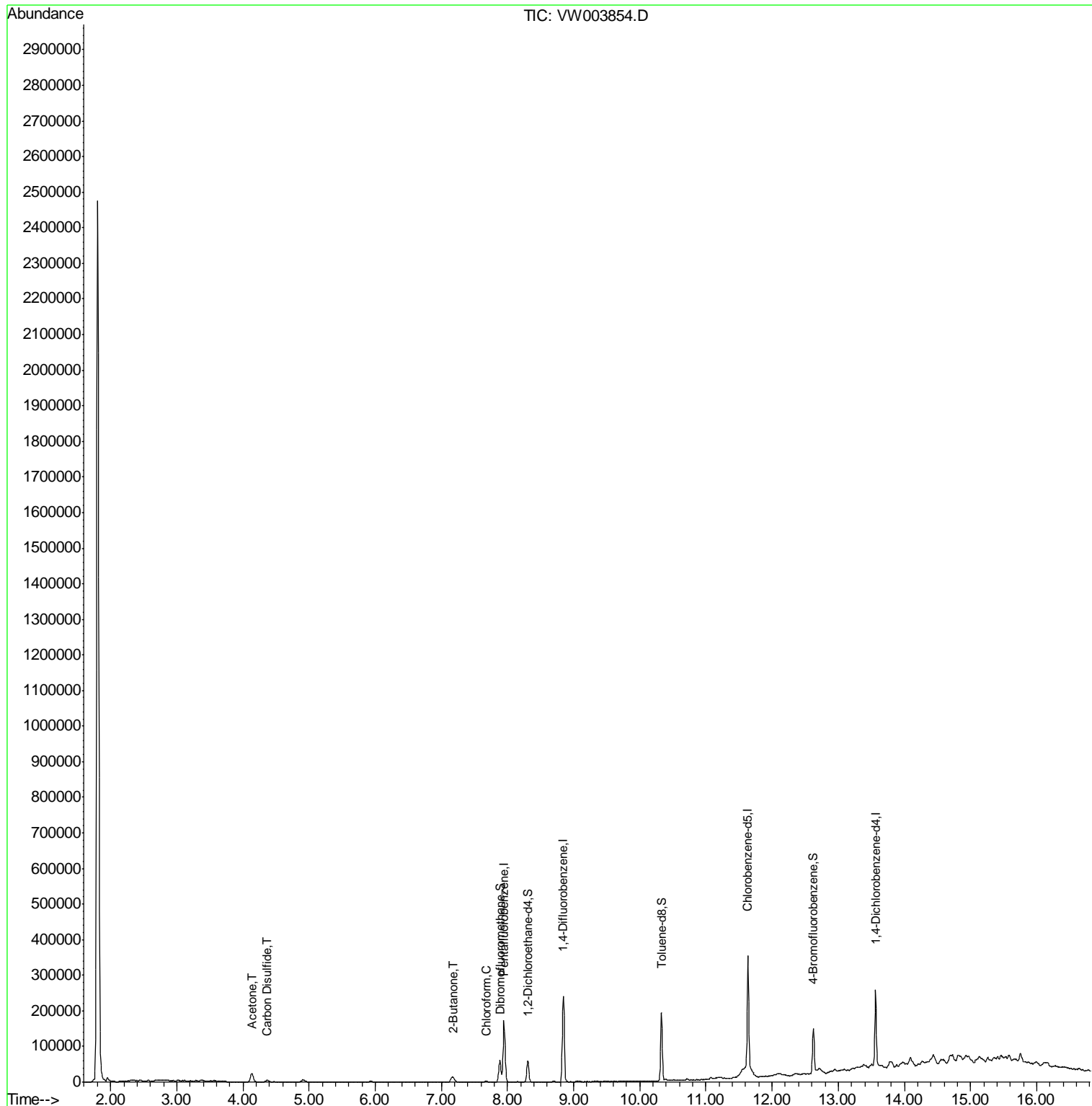
Internal Standards	R.T.	QIon	Response	Conc	Units	Dev(Min)
1) Pentafluorobenzene	7.95	168	122445	50.00	ug/l	0.00
34) 1,4-Difluorobenzene	8.85	114	192741	50.00	ug/l	0.00
63) Chlorobenzene-d5	11.63	117	166031	50.00	ug/l	0.00
72) 1,4-Dichlorobenzene-d4	13.57	152	54874	50.00	ug/l	0.00
System Monitoring Compounds						
33) 1,2-Dichloroethane-d4	8.31	65	47305	29.54	ug/l	0.00
Spiked Amount	50.000		Recovery	=	59.08%	
35) Dibromofluoromethane	7.88	113	43491	32.24	ug/l	0.00
Spiked Amount	50.000		Recovery	=	64.48%	
50) Toluene-d8	10.33	98	126217	24.46	ug/l	0.00
Spiked Amount	50.000		Recovery	=	48.92%	
62) 4-Bromofluorobenzene	12.62	95	38467	20.60	ug/l	0.00
Spiked Amount	50.000		Recovery	=	41.20%	
Target Compounds						
16) Acetone	4.13	43	44914	161.67	ug/l	96
17) Carbon Disulfide	4.37	76	10896	2.89	ug/l	95
25) 2-Butanone	7.18	43	14571	33.49	ug/l #	86
30) Chloroform	7.68	83	2757	1.02	ug/l #	80

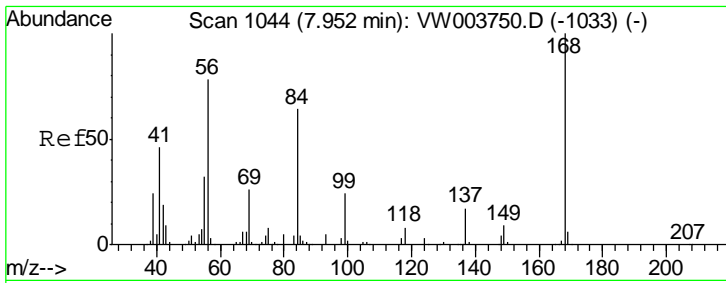
(#) = qualifier out of range (m) = manual integration (+) = signals summed

Data Path : Z:\VOASRV\HPCHEM1\MSVOA W\DATA\VW071018\
 Data File : VW003854.D
 Acq On : 11 Jul 2018 05:30
 Operator : SY/AP
 Sample : J3914-01
 Misc : 3.24G/5ML/MSVOA W/SOIL
 ALS Vial : 42 Sample Multiplier: 1

Instrument :
 MSVOA_W
 ClientSampleId :
 B1

Quant Time: Jul 11 07:03:39 2018
 Quant Method : Z:\VOASRV\HPCHEM1\MSVOA_W\METHOD\82W070718S.M
 Quant Title : SW846 8260
 QLast Update : Sat Jul 07 05:07:25 2018
 Response via : Initial Calibration

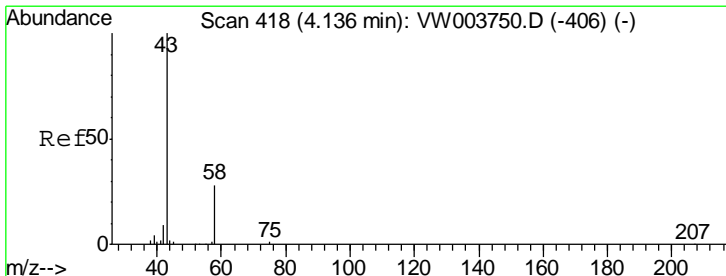
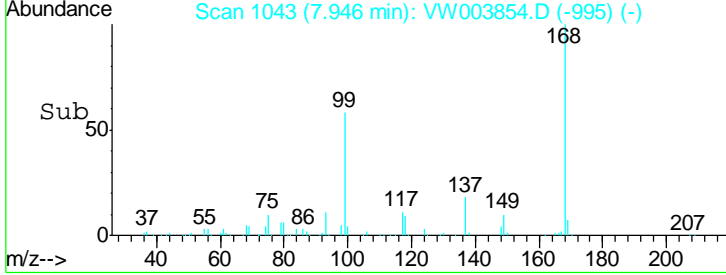
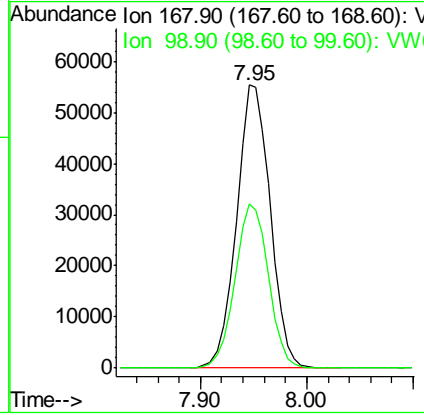
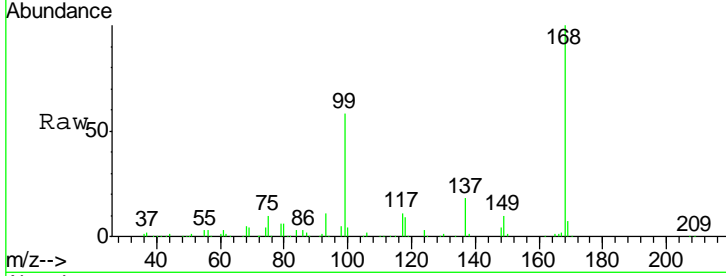




#1
 Pentafluorobenzene
 Concen: 50.00 ug/l
 RT: 7.95 min Scan# 1043
 Delta R.T. -0.01 min
 Lab File: VW003854.D
 Acq: 11 Jul 2018 05:30

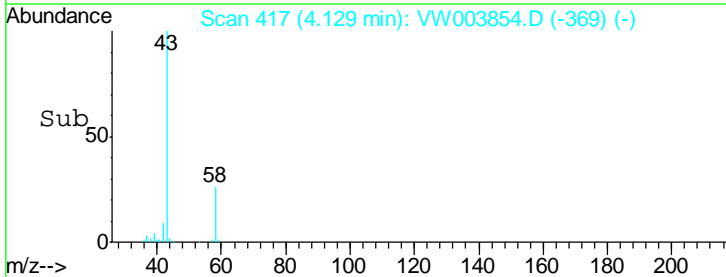
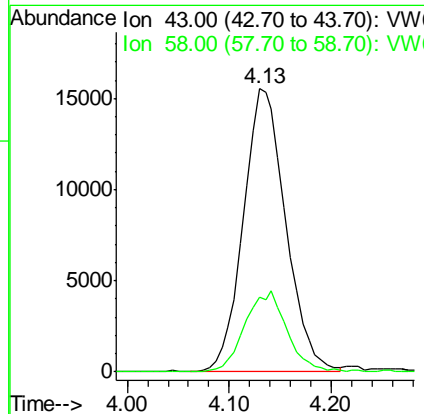
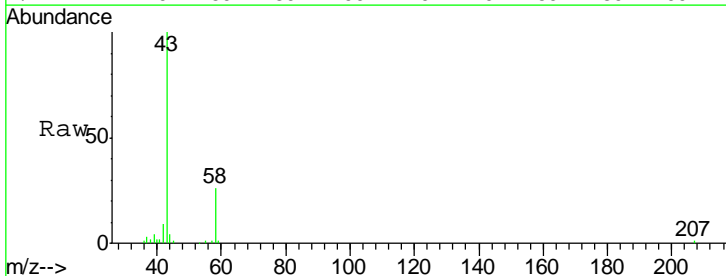
Instrument :
 MSVOA_W
 ClientSampled :
 B1

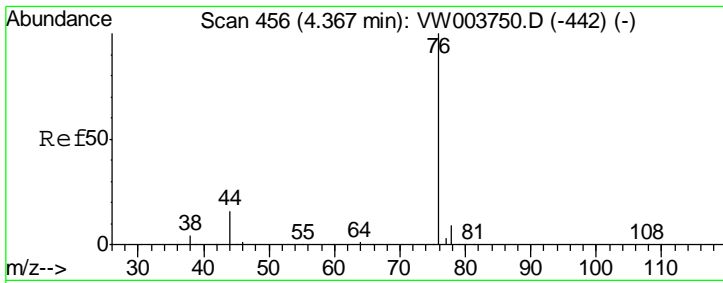
Tgt Ion	Resp	Lower	Upper
168	100		
99	58.1	45.0	67.6



#16
 Acetone
 Concen: 161.67 ug/l
 RT: 4.13 min Scan# 417
 Delta R.T. -0.01 min
 Lab File: VW003854.D
 Acq: 11 Jul 2018 05:30

Tgt Ion	Resp	Lower	Upper
43	100		
58	26.2	22.6	34.0

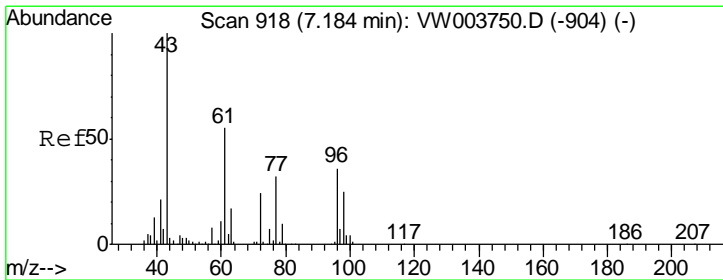
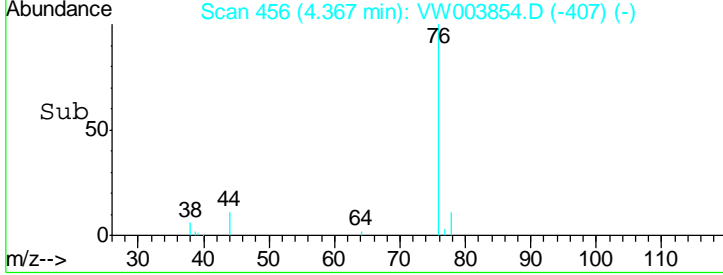
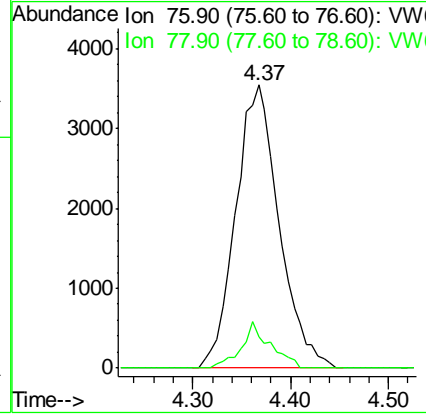
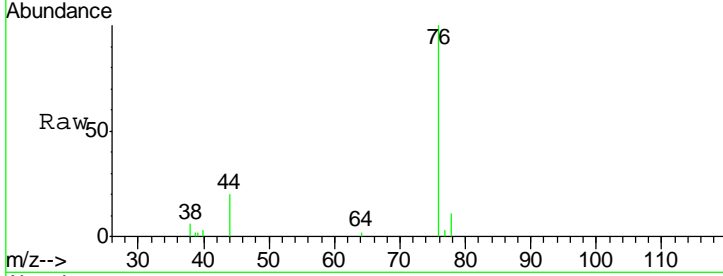




#17
 Carbon Disulfide
 Concen: 2.89 ug/l
 RT: 4.37 min Scan# 456
 Delta R.T. -0.00 min
 Lab File: VW003854.D
 Acq: 11 Jul 2018 05:30

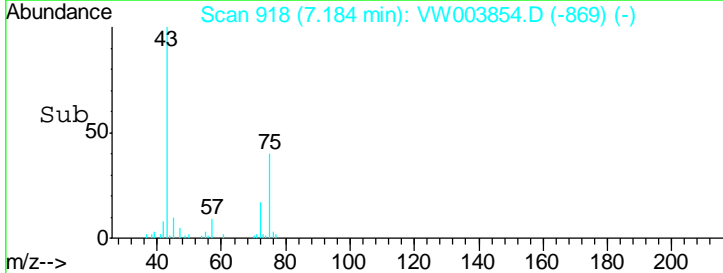
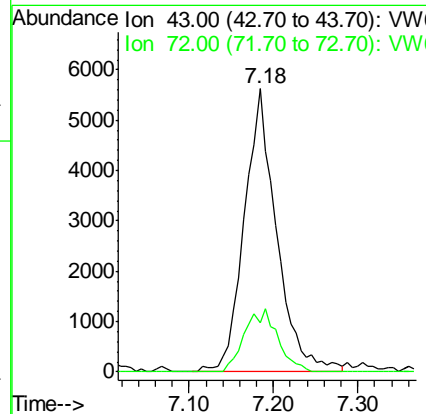
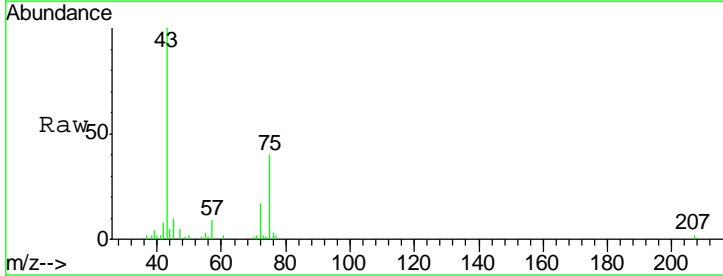
Instrument :
 MSVOA_W
 ClientSampled :
 B1

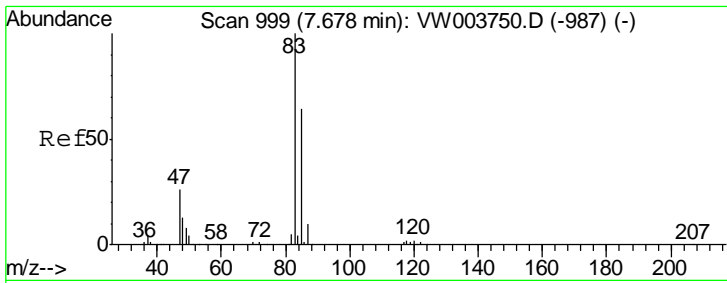
Tgt Ion	Resp	Lower	Upper
76	10896		
78	11.1	7.4	11.2



#25
 2-Butanone
 Concen: 33.49 ug/l
 RT: 7.18 min Scan# 918
 Delta R.T. -0.00 min
 Lab File: VW003854.D
 Acq: 11 Jul 2018 05:30

Tgt Ion	Resp	Lower	Upper
43	14571		
72	17.5	19.4	29.2#

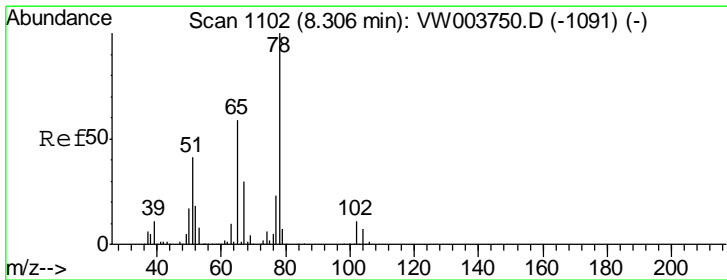
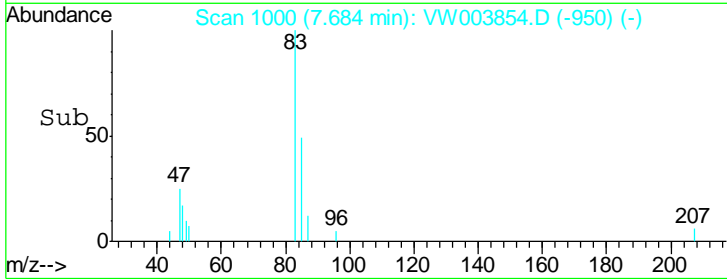
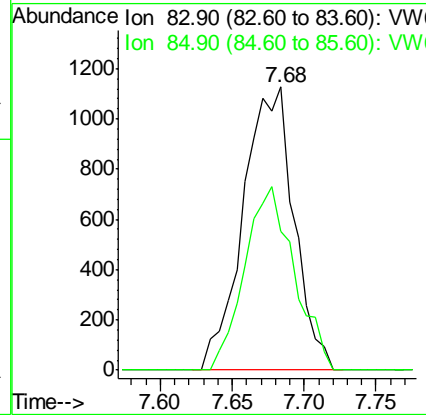
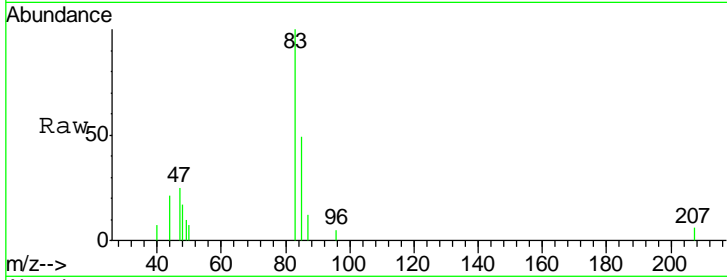




#30
 Chloroform
 Concen: 1.02 ug/l
 RT: 7.68 min Scan# 1000
 Delta R.T. 0.01 min
 Lab File: VW003854.D
 Acq: 11 Jul 2018 05:30

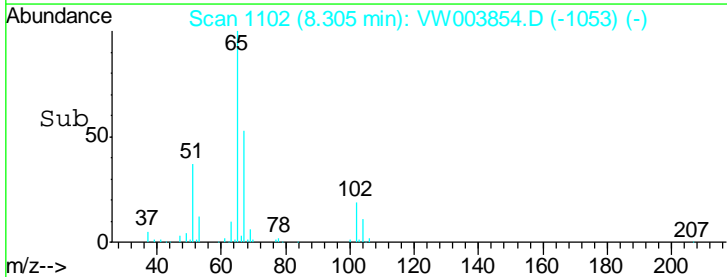
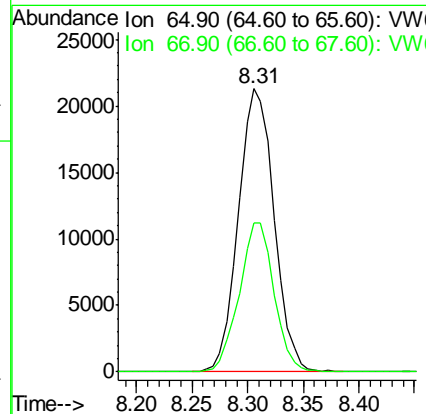
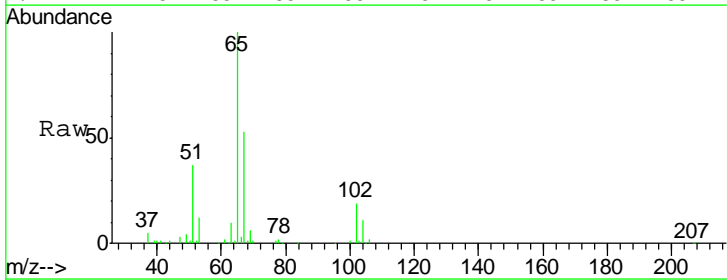
Instrument :
 MSVOA_W
 ClientSampled :
 B1

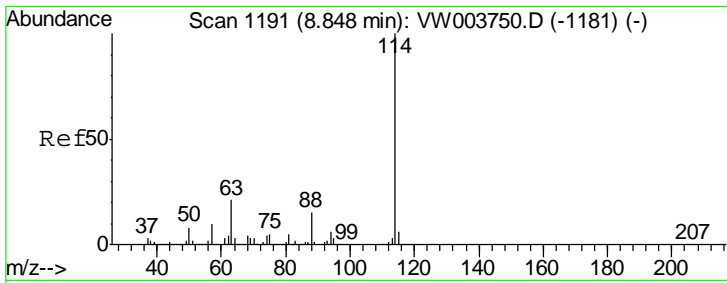
Tgt Ion: 83 Resp: 2757
 Ion Ratio Lower Upper
 83 100
 85 48.9 51.5 77.3#



#33
 1,2-Dichloroethane-d4
 Concen: 29.54 ug/l
 RT: 8.31 min Scan# 1102
 Delta R.T. -0.00 min
 Lab File: VW003854.D
 Acq: 11 Jul 2018 05:30

Tgt Ion: 65 Resp: 47305
 Ion Ratio Lower Upper
 65 100
 67 51.7 0.0 103.8

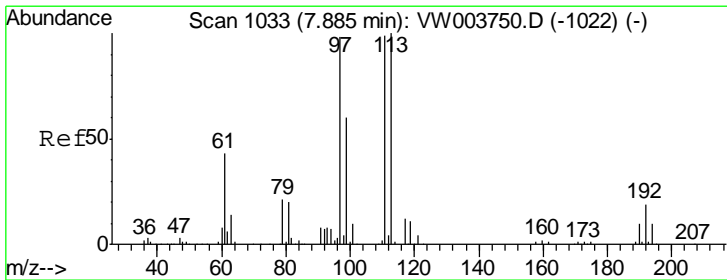
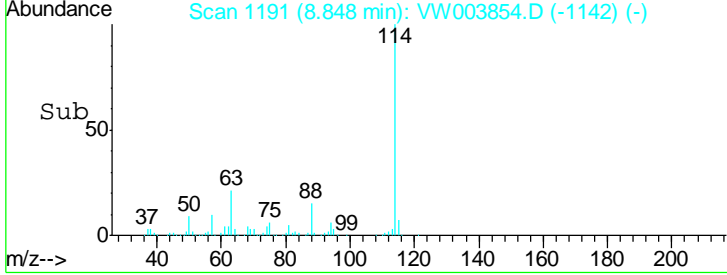
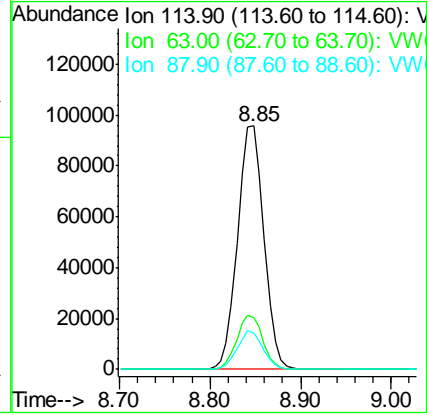
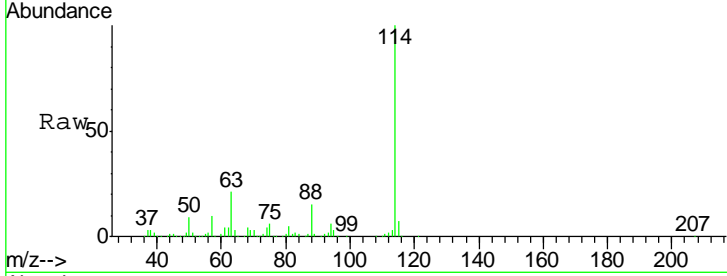




#34
 1,4-Difluorobenzene
 Concen: 50.00 ug/l
 RT: 8.85 min Scan# 1191
 Delta R.T. -0.00 min
 Lab File: VW003854.D
 Acq: 11 Jul 2018 05:30

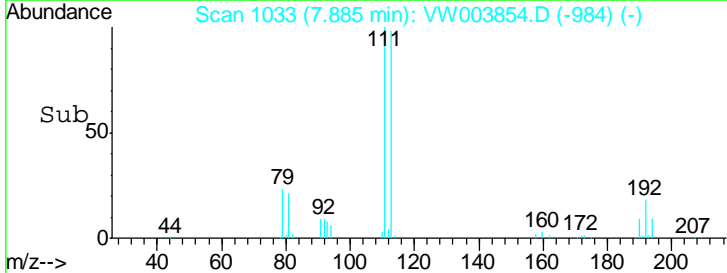
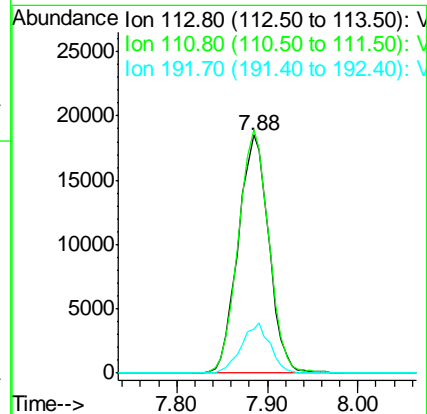
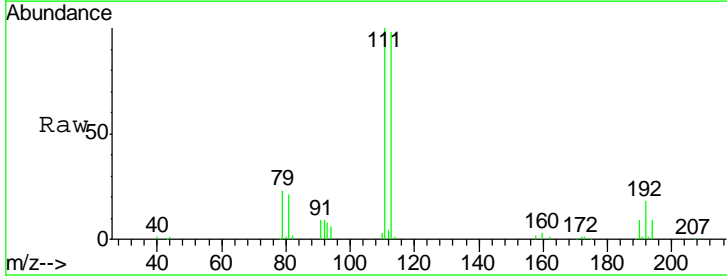
Instrument :
 MSVOA_W
 ClientSampled :
 B1

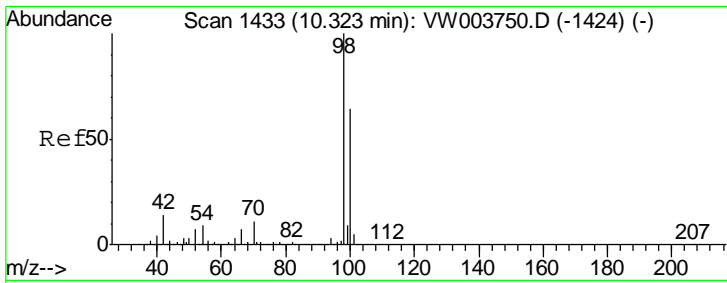
Tgt Ion	Resp	Lower	Upper
114	100		
63	21.2	0.0	41.8
88	15.1	0.0	30.2



#35
 Dibromofluoromethane
 Concen: 32.24 ug/l
 RT: 7.88 min Scan# 1033
 Delta R.T. -0.00 min
 Lab File: VW003854.D
 Acq: 11 Jul 2018 05:30

Tgt Ion	Resp	Lower	Upper
113	100		
111	101.4	81.7	122.5
192	19.4	15.8	23.8

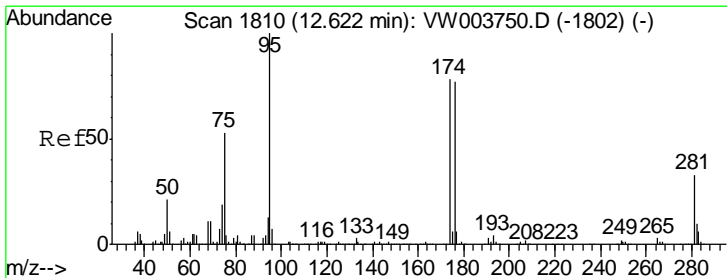
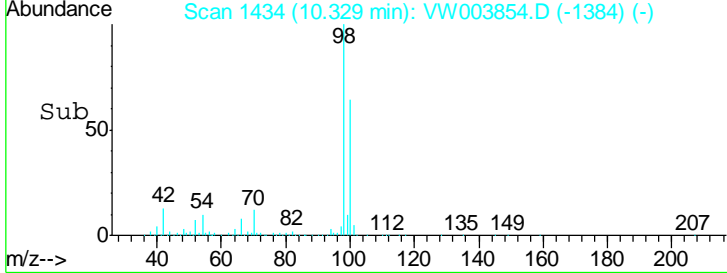
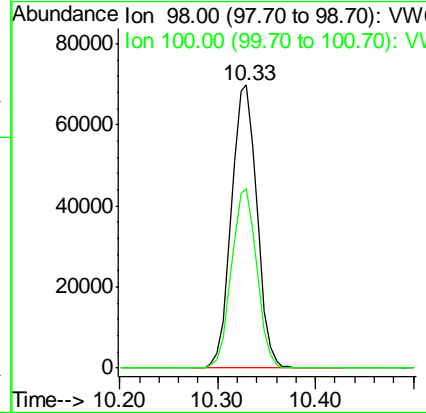
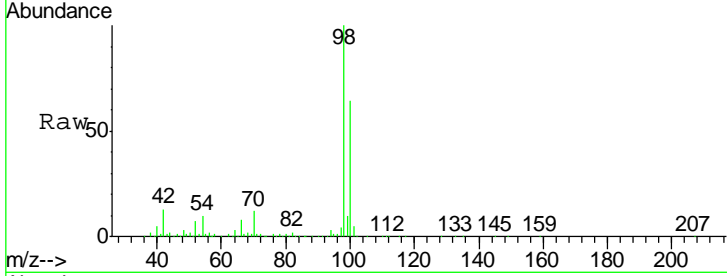




#50
 Toluene-d8
 Concen: 24.46 ug/l
 RT: 10.33 min Scan# 1434
 Delta R.T. 0.01 min
 Lab File: VW003854.D
 Acq: 11 Jul 2018 05:30

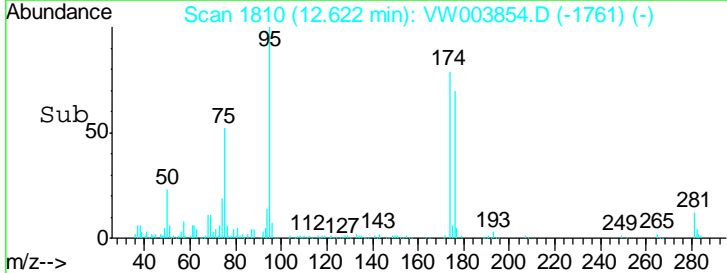
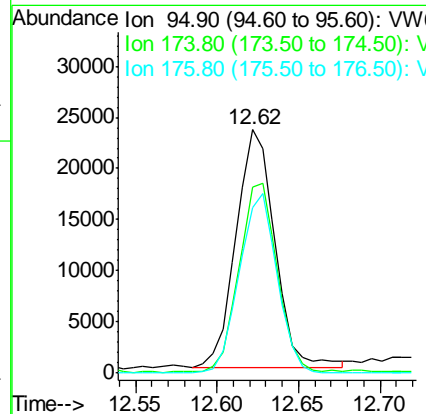
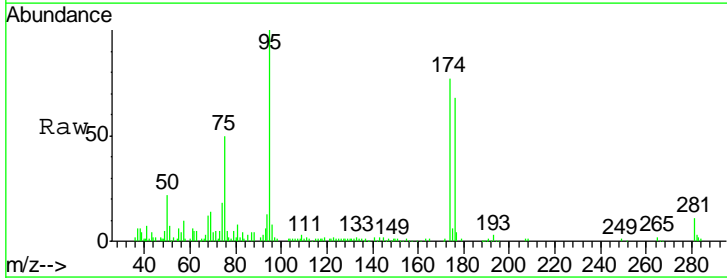
Instrument :
 MSVOA_W
 ClientSampled :
 B1

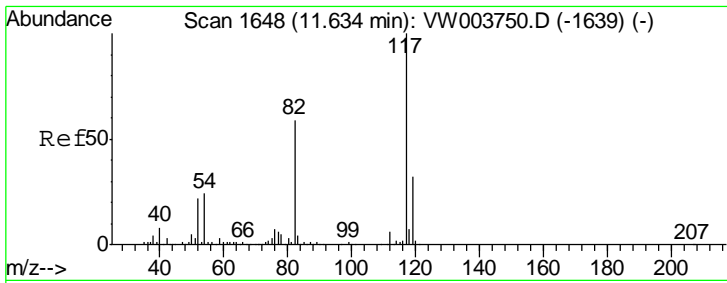
Tgt Ion	Resp	Lower	Upper
98	126217		
100	100		
100	62.7	50.8	76.2



#62
 4-Bromofluorobenzene
 Concen: 20.60 ug/l
 RT: 12.62 min Scan# 1810
 Delta R.T. -0.00 min
 Lab File: VW003854.D
 Acq: 11 Jul 2018 05:30

Tgt Ion	Resp	Lower	Upper
95	38467		
95	100		
174	77.8	0.0	163.4
176	73.7	0.0	156.8

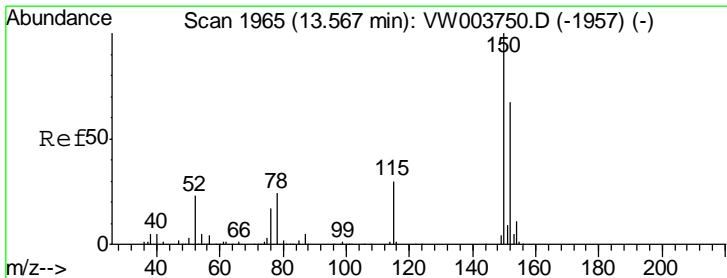
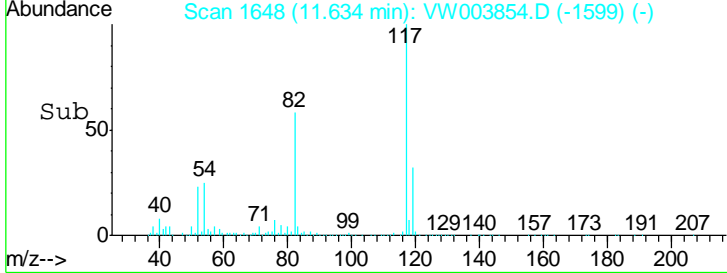
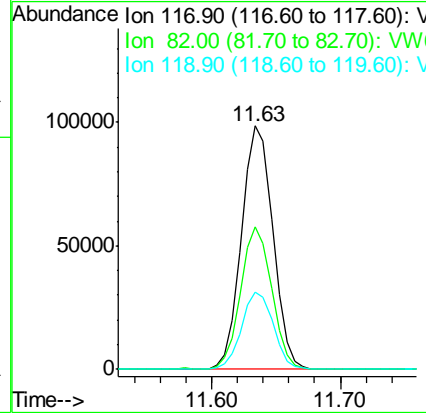
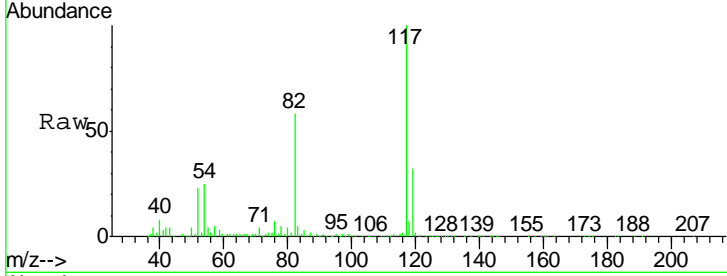




#63
 Chlorobenzene-d5
 Concen: 50.00 ug/l
 RT: 11.63 min Scan# 1648
 Delta R.T. -0.00 min
 Lab File: VW003854.D
 Acq: 11 Jul 2018 05:30

Instrument :
 MSVOA_W
 ClientSampled :
 B1

Tgt Ion	Resp	Lower	Upper
117	166031		
82	58.1	46.9	70.3
119	31.5	25.5	38.3



#72
 1,4-Dichlorobenzene-d4
 Concen: 50.00 ug/l
 RT: 13.57 min Scan# 1965
 Delta R.T. -0.00 min
 Lab File: VW003854.D
 Acq: 11 Jul 2018 05:30

Tgt Ion	Resp	Lower	Upper
152	54874		
115	58.3	28.9	86.8
150	156.6	0.0	342.4

