

Data Path : Z:\voasrv\HPCHEM1\MSVOA_W\Data\VW071522\
 Data File : VW023786.D
 Acq On : 16 Jul 2022 08:26
 Operator : SY/VA
 Sample : N3701-19
 Misc : 6.17g/10mL/MSVOA_W/SOIL
 ALS Vial : 1 Sample Multiplier: 1

Instrument :
 MSVOA_W
ClientSampleId :
 F5B92

Manual Integrations
APPROVED
 Reviewed By :Krupa Patel 07/18/2022
 Supervised By :Mahesh Dadoda 07/18/2022

Quant Time: Jul 18 01:31:04 2022
 Quant Method : Z:\voasrv\HPCHEM1\MSVOA_W\Method\SFAMWLM071322SMA.M
 Quant Title : SFAM01.0
 QLast Update : Sat Jul 16 01:30:01 2022
 Response via : Initial Calibration

Compound	R.T.	QIon	Response	Conc	Units	Dev(Min)
Internal Standards						
1) 1,4-Difluorobenzene	8.841	114	175397	25.000	ug/L	0.00
28) Chlorobenzene-d5	11.633	117	167564	25.000	ug/L	0.00
58) 1,4-Dichlorobenzene-d4	13.554	152	62276	25.000	ug/L	0.00
System Monitoring Compounds						
4) Vinyl Chloride-d3	2.349	65	60686	13.547	ug/L	0.00
Spiked Amount	25.000	Range 30 - 150	Recovery =	54.200%		
7) Chloroethane-d5	2.879	69	55836	18.683	ug/L	0.00
Spiked Amount	25.000	Range 30 - 150	Recovery =	74.720%		
11) 1,1-Dichloroethene-d2	4.013	63	36481	10.001	ug/L	0.00
Spiked Amount	25.000	Range 45 - 110	Recovery =	40.000%#		
21) 2-Butanone-d5	7.079	46	31147	44.825	ug/L	0.00
Spiked Amount	50.000	Range 20 - 135	Recovery =	89.640%		
24) Chloroform-d	7.646	84	109496	21.442	ug/L	0.00
Spiked Amount	25.000	Range 40 - 150	Recovery =	85.760%		
26) 1,2-Dichloroethane-d4	8.305	65	70139	22.457	ug/L	0.00
Spiked Amount	25.000	Range 70 - 130	Recovery =	89.840%		
32) Benzene-d6	8.274	84	197012	22.618	ug/L	0.00
Spiked Amount	25.000	Range 20 - 135	Recovery =	90.480%		
36) 1,2-Dichloropropane-d6	9.274	67	64976	24.764	ug/L	0.00
Spiked Amount	25.000	Range 70 - 120	Recovery =	99.040%		
41) Toluene-d8	10.323	98	170485	19.296	ug/L	0.00
Spiked Amount	25.000	Range 30 - 130	Recovery =	77.200%		
43) trans-1,3-Dichloroprop...	10.579	79	17562	14.280	ug/L	0.00
Spiked Amount	25.000	Range 30 - 135	Recovery =	57.120%		
47) 2-Hexanone-d5	10.920	63	24173	43.814	ug/L	0.00
Spiked Amount	50.000	Range 20 - 135	Recovery =	87.620%		
56) 1,1,2,2-Tetrachloroeth...	12.688	84	62065	21.405	ug/L	0.00
Spiked Amount	25.000	Range 45 - 120	Recovery =	85.600%		
66) 1,2-Dichlorobenzene-d4	13.853	152	51596	23.209	ug/L	0.00
Spiked Amount	25.000	Range 75 - 120	Recovery =	92.840%		
Target Compounds						
13) Acetone	4.123	43	7855m	15.989	ug/L	
14) Carbon disulfide	4.379	76	18319	3.349	ug/L	98

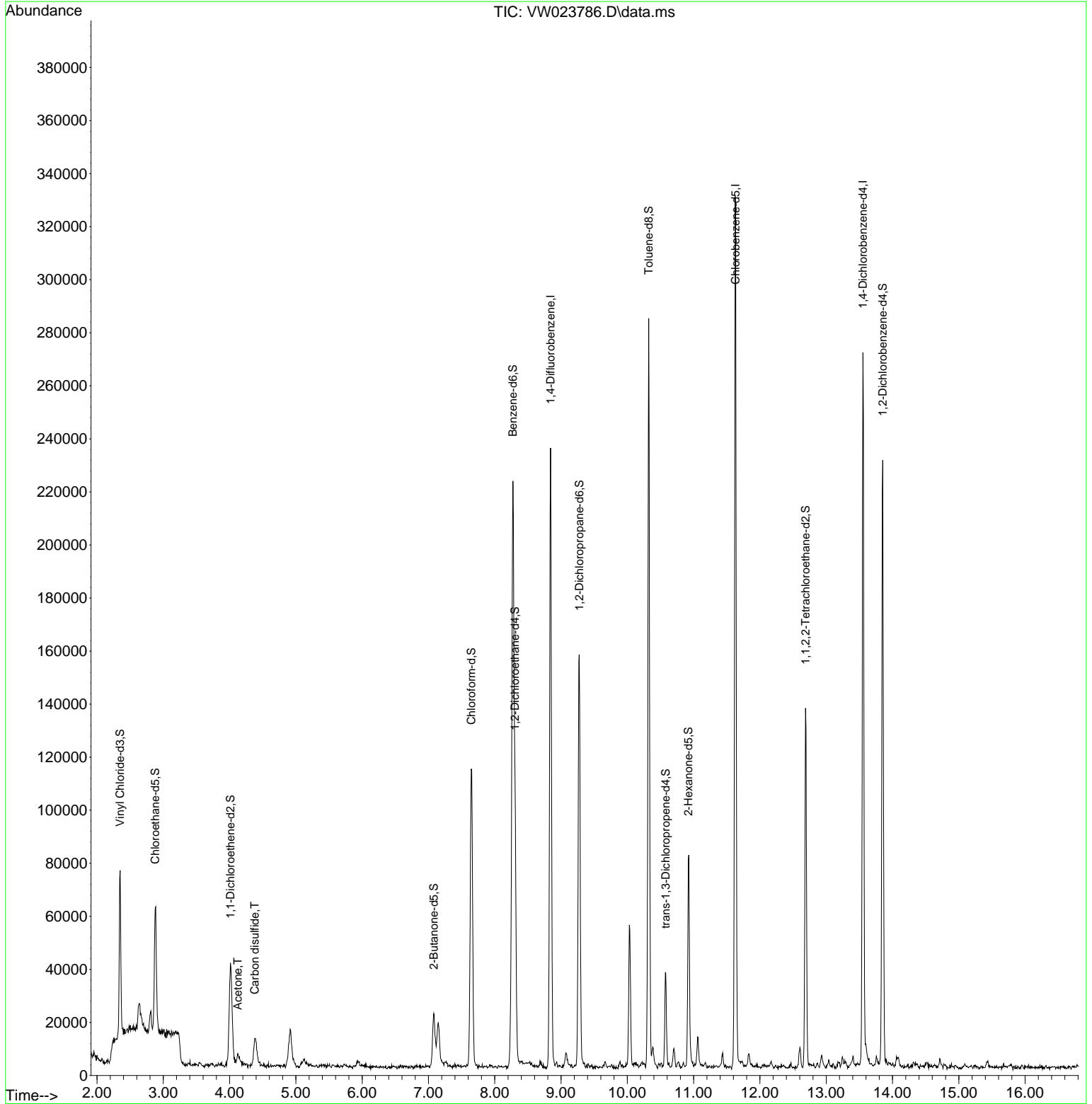
(#) = qualifier out of range (m) = manual integration (+) = signals summed

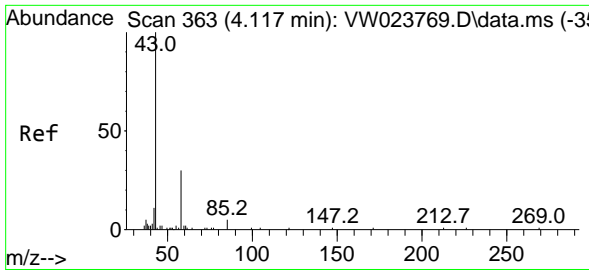
Data Path : Z:\voasrv\HPCHEM1\MSVOA_W\Data\VW071522\
 Data File : VW023786.D
 Acq On : 16 Jul 2022 08:26
 Operator : SY/VA
 Sample : N3701-19
 Misc : 6.17g/10mL/MSVOA_W/SOIL
 ALS Vial : 1 Sample Multiplier: 1

Instrument :
 MSVOA_W
ClientSampleId :
 F5B92

Quant Time: Jul 18 01:31:04 2022
 Quant Method : Z:\voasrv\HPCHEM1\MSVOA_W\Method\SFAMWLM071322SMA.M
 Quant Title : SFAM01.0
 QLast Update : Sat Jul 16 01:30:01 2022
 Response via : Initial Calibration

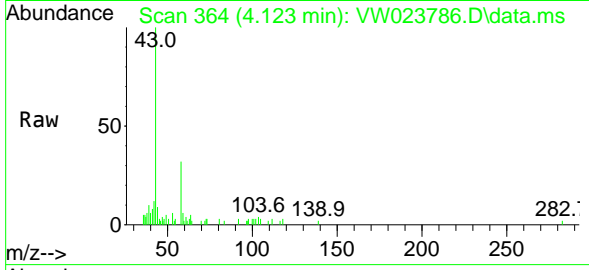
Manual Integrations
APPROVED
 Reviewed By :Krupa Patel 07/18/2022
 Supervised By :Mahesh Dadoda 07/18/2022





#13
 Acetone
 Concen: 15.989 ug/L m
 RT: 4.123 min Scan# 30
 Delta R.T. 0.006 min
 Lab File: VW023786.D
 Acq: 16 Jul 2022 08:26

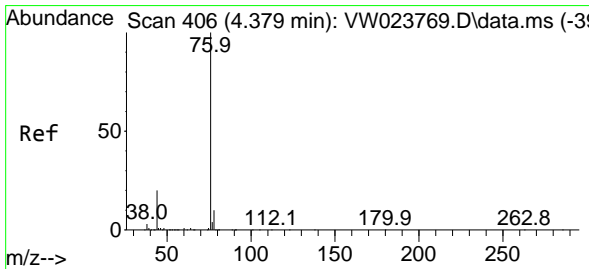
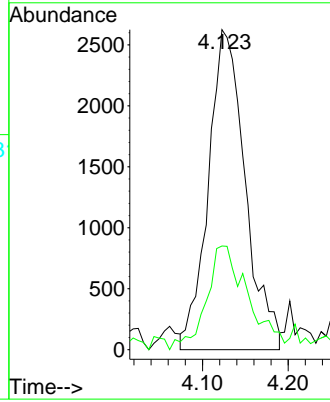
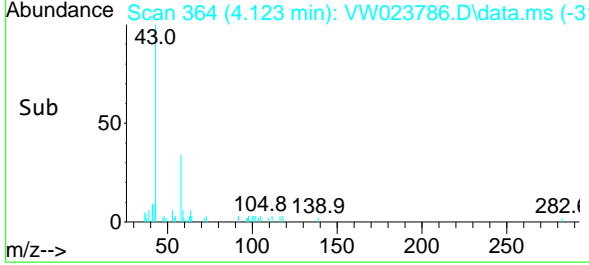
Instrument :
 MSVOA_W
 ClientSampleId :
 F5B92



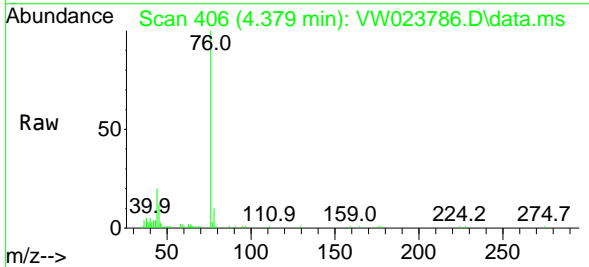
Tgt Ion: 43 Resp: 785
 Ion Ratio Lower Upper
 43 100
 58 23.5 0.0 64.2

Manual Integrations
 APPROVED

Reviewed By :Krupa Patel 07/18/2022
 Supervised By :Mahesh Dadoda 07/18/2022



#14
 Carbon disulfide
 Concen: 3.349 ug/L
 RT: 4.379 min Scan# 406
 Delta R.T. -0.000 min
 Lab File: VW023786.D
 Acq: 16 Jul 2022 08:26



Tgt Ion: 76 Resp: 18319
 Ion Ratio Lower Upper
 76 100
 78 9.9 7.2 10.8

